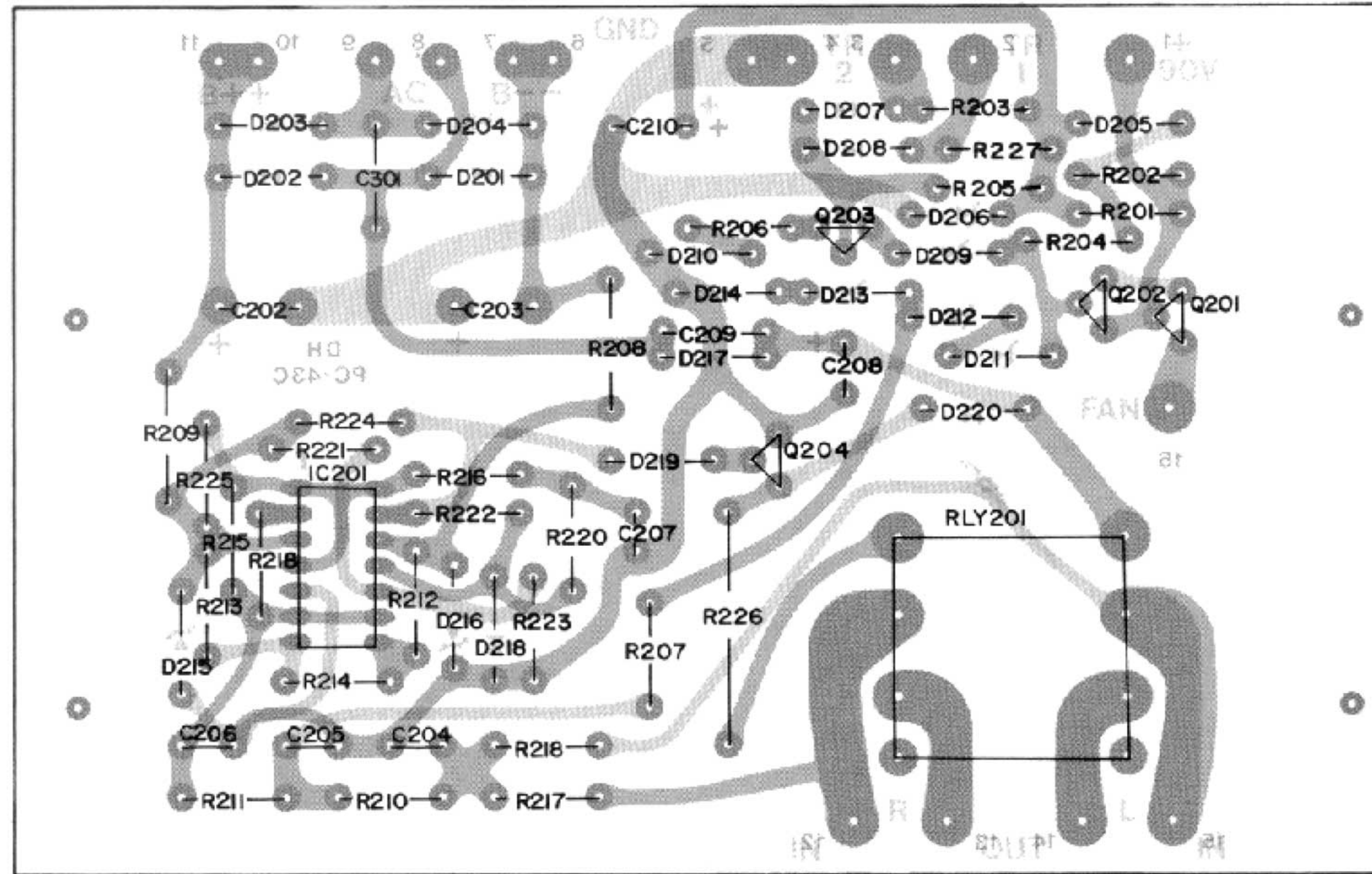


PC 43



Light Gray: Component Side

Gray: Solder Side

COMPONENTS PARTS LIST

DESIGNATOR	DESCRIPTION	PART #
R201	47K ohms	RC/4-473
R202	10K ohms	RC/4-103
R203	120K ohms	RC/4-124
R204	47K ohms	RC/4-473
R205	1 MEG ohms	RC/4-105
R206	1000 ohms	RC/4-102
R207	100K ohms	RC/4-104
R208	27K ohms 1/2W 5% carbon film	RC/2-273
R209	27K ohms 1/2W 5% carbon film	RC/2-273
R210	150K ohms	RC/4-154
R211	150K ohms	RC/4-154
R212	22K ohms	RC/4-223
R213	22K ohms	RC/4-223
R214	8.2K ohms	RC/4-822
R215	10 MEG ohms	RC/4-106
R216	4.7K ohms	RC/4-472
R217	120K ohms	RC/4-124
R218	100K ohms	RC/4-104
R219	10 MEG ohms	RC/4-106
R220	10K ohms	RC/4-103
R221	100 ohms	RC/4-104
R222	10 MEG ohms	RC/4-106
R223	15 K ohms	RC/4-154

COMPONENTS PARTS LIST

DESIGNATOR	DESCRIPTION	PART #
R224	22K ohms	RC/4-223
R225	1 MEG ohms	RC/4-105
R226	2.2K ohms	RC/4-124
R227	120K ohms	RC/4-124
C201	.01 mfd, 1000v, 20% ceramic disk	CD-103/20
C202	470 mfd, 20%	CER-477D
C203	470 mfd, 20%	CER-477D
C204	.47 mfd, 63v, 10% polyester	CP-474
C205	.47 mfd, 63v, 10% polyester	CP-474
C206	.47 mfd, 63v, 10% polyester	CP-474
C207	1 mfd, 16v, bipolar electro	CERNP-105A
C208	22 mfd, 100v, electrolytic	CER-226D
C209	.01 mfd, 1000v, 20% ceramic disk (UL)	CD-103/20
C210	470 mfd, 35v electrolytic	CER-477A/20
Q201	TIP29C	SSH-606
Q202	2N5550	SSH-613
Q203	2N5550	SSH-613
Q204	2N5550	SSH-613
D201	1N4003, 1A, 200 PIV	SS-161
D202	1N4003, 1A, 200 PIV	SS-161

COMPONENTS PARTS LIST

DESIGNATOR	DESCRIPTION	PART #
D203	1N4003, 1A, 200 PIV	SS-161
D204	1N4003, 1A, 200 PIV	SS-161
D205	1N5254B, 27v, 1/2W, 5% ZENER	SSH-602
D206	1N5257B, 33v, 1/2W, 5% ZENER	SSH-604
D207	1N4148	SS-162
D208	1N4148	SS-162
D209	1N5258, 18v, 1/2W, 5% ZENER	SDH-559
D210	1N4148	SS-162
D211	1N969B, 22v, 1/2W, 5% ZENER	SSH-601
D212	1N5254B, 27v, 1/2W, 5% ZENER	SSH-602
D213	1N5231B, 5.1v, 1/2W, 5% ZENER	SSH-603
D214	1N4148	SS-162
D215	1N5240B, 10v, 1/2W, 5% ZENER	SSH-600
D216	1N5240B, 10v, 1/2W, 5% ZENER	SSH-600
D217	1N4003	SS-161
D218	1N4148	SS-162
D219	1N4148	SS-162
D220	1N4003	SS-161
IC201	LM393 Dual Comparator	SSH-140
RLY 201	2-Pole Double Throw Relay	

Note: Resistors are 1/4W 5% carbon film unless otherwise noted.

DESIGNATOR	DESCRIPTION	PART #	DESIGNATOR	DESCRIPTION	PART #	DESIGNATOR	DESCRIPTION	PART #
R1	2.2K ohms 1/4W 1% metal film	RMP/4-2211	C1	47 pfd, 500v, 10% polypropylene	CPP-470	Q10	2N5415	SSH-616
R2	47.5K ohms 1/4W 1% metal film	RMP/4-4752	C2	.33 mfd, 63v, 20% polyester	CP-334	Q11	NP2222A	SSH-611
R3	110K ohms 1/4W 1% metal film	RMP/4-1103	C3	.001 mfd, 250v, 10% polypropylene	CPP-102	Q12	2N5401	SS-204
R4	17.4K ohms 1/4W 1% metal film	RMP/4-1742	C4	.01 mfd, 160v, 10% polypropylene	CPP-103/10	Q13	2N3440	SSH-612
R5	47.5K ohms 1/4W 1% metal film	RMP/4-4752	C5	.001 mfd, 250v, 10% polypropylene	CPP-102	Q14	2N3440	SSH-612
R6	47.5K ohms 1/4W 1% metal film	RMP/4-4752	C6	.10 mfd, 100v, 10% polycarbonate	CPC-104	Q15	2N5415	SSH-616
R7	1K ohms 1/4W 1% metal film	RMP/4-1001	C7	.001 mfd, 250v, 10% polypropylene	CPP-102	Q101	2SK176 MOSFET	SSH-607
R8	1K ohms 1/4W 1% metal film	RMP/4-1001	C8	1000 mfd, 6.3v, bipolar electro	CERNP-108	Q102	2SK176 MOSFET	SSH-607
R9	330 ohms	RC/4-331	C9	560 pfd, 630v, 10% polypropylene	CPP-561	Q103	2SK176 MOSFET	SSH-607
R10	330 ohms	RC/4-331	C10	10 pfd, 500v, 10% dipped mica	CM-100	Q104	2SK176 MOSFET	SSH-607
R11	1K ohms 1/4W 1% metal film	RMP/4-1001	C11	120 pfd, variable	CV-121	Q105	2SJ56 MOSFET	SSH-608
R12	1K ohms 1/4W 1% metal film	RMP/4-1001	C12	.10 mfd, 100v, 10% polycarbonate	CPC-104	Q106	2SJ56 MOSFET	SSH-608
R13	47 ohms	RC/4-470	C13	.10 mfd, 100v, 10% polycarbonate	CPC-104	Q107	2SJ56 MOSFET	SSH-608
R14	47 ohms	RC/4-470	C14	150 pfd, 500v, 5% dipped mica	CM-151	Q108	2SJ56 MOSFET	SSH-608
R15	47 ohms	RC/4-470	C15	.01 mfd, 160v, 10% polypropylene	CPP-103/10			
R16	47 ohms	RC/4-470	C16	.10 mfd, 100v, 10% polycarbonate	CPC-104	D1	1N4148	SS-162
R17	270 ohms	RC/4-271	C17	100 mfd, 100v, electrolytic	CER-107D	D2	1N4148	SS-162
R18	270 ohms	RC/4-271	C18	120 pfd, 500v, 10% dipped mica	CM-121	D3	1N5245B, 15v, 1/2W, 5% Zener	SSH-610
R19	1K ohms 1/4W 1% metal film	RMP/4-1001	C19	100 mfd, 100v, electrolytic	CER-107D	D4	1N5245B, 15v, 1/2W, 5% Zener	SSH-610
R20	1K ohms 1/4W 1% metal film	RMP/4-1001	C20	.10 mfd, 100v, 10% polycarbonate	CPC-104	D5	1N4003, 1A, 200 PIV	SS-161
R21	68 ohms	RC/4-680	C21	.10 mfd, 100v, 10% polycarbonate	CPC-104	D6	1N4003, 1A, 200 PIV	SS-161
R22	2.21K ohms 1/4W 1% metal film	RMP/4-2211	C22	.10 mfd, 100v, 10% polyester	CP-104A			
R23	3.32K ohms 1/4W 1% metal film	RMP/4-3321	C23	.10 mfd, 100v, 10% polyester	CP-104A	DB301	Diode Bridge, 25A	SSH-609
R24	47 ohms	RC/4-270	C24	.01 mfd, 160v, 10% polypropylene	CPP-103/10	DB302	Diode Bridge, 25A	SSH-609
R25	100K ohms	RC/4-104	C101	910 pfd, 100v, 2% dipped mica	CM-911			
R26	68.1K ohms 1/4W 1% metal film	RMP/4-4752	C102	910 pfd, 100v, 2% dipped mica	CM-911	F1	10A, AGC/3AG	FS-010
R27	47.5K ohms 1/4W 1% metal film	RMP/4-4752	C103	.10 mfd, 100v, 10% polyester	CP-104A	F2	10A, AGC/3AG	FS-010
R28	47.5K ohms 1/4W 1% metal film	RMP/4-4752	C104	.10 mfd, 100v, 10% polyester	CP-104A	F301	15A, SLO-BLO AGC/3AB	FS-015SB
R29	64.9K ohms 1/4W 1% metal film	RMP/4-4752	C105	.10 mfd, 100v, 10% polyester	CP-104A	F302	7A, SLO-BLO AGC/3AB	FS-007SB
R30	47.5K ohms 1/4W 1% metal film	RMP/4-4752	C301	.01 mfd, 1600v, 20% ceramic disk (UL)	CD-103A	F303	5A, AGC/3AB (size optional)	FS-005SB
R31	330 ohms	RC/4-331	C302	.01 mfd, 1000v, 20% ceramic disk	CD-103/20			
R32	4.7 ohms	RC/4-047	C303	.01 mfd, 1000v, 20% ceramic disk	CD-103/20	P1	1000 ohms, variable	RVH-102
R33	47 ohms Carbon Comp.	RC/4-470C	C304	18000 mfd, 100v, electrolytic	CER-189D			
R34	330 ohms	RC/4-331	C305	18000 mfd, 100v, electrolytic	CER-189D	S301	SPST, rocker	SWH-104
R35	220 ohms	RC/4-221	C306	18000 mfd, 100v, electrolytic	CER-189D	S302	DPDT, slide	SWH-103
R36	47 ohms Carbon Comp.	RC/4-470C	C307	18000 mfd, 100v, electrolytic	CER-189D			
R37	4.7 ohms	RC/4-047				TB301	thermal breaker, 75 deg C	SWH-102
R101	470 ohms 1/2W 5% carbon film	RC/2-471	Q1	2N5550	SSH-613	TB302	thermal breaker, 75 deg C	SWH-102
R102	470 ohms 1/2W 5% carbon film	RC/2-471	Q2	2N5550	SSH-613			
R103	470 ohms 1/2W 5% carbon film	RC/2-471	Q3	N-Channel J-FET (selected)	SSH-614	J301	RCA jack, red, (right channel)	CCH-148R
R104	470 ohms 1/2W 5% carbon film	RC/2-471	Q4	N-Channel J-FET (selected)	SSH-614	J302	RCA jack, black, (left channel)	CCH-148B
R105	220 ohms 1/2W 5% carbon film	RC/2-221	Q5	P-Channel J-FET (selected)	SSH-617	J303	Dual 5-Way binding post	CC-568
R106	220 ohms 1/2W 5% carbon film	RC/2-221	Q6	P-Channel J-FET (selected)	SSH-617			
R107	220 ohms 1/2W 5% carbon film	RC/2-221	Q7	2N5401	SS-204	FM101	48v, D.C. fan, 4 inch	FAN-600
R108	220 ohms 1/2W 5% carbon film	RC/2-221	Q8	2N5401	SS-204			
R109	22K ohms NTC thermistor	SWH-101	Q9	2N5550	SSH-613			
R110	22K ohms NTC thermistor	SWH-101						
R301	5 ohms PTC thermistor	FS-602						

Note: Resistors are 1/4W 5% carbon film unless otherwise noted.

PC40D ONLY RIGHT CHANNEL SHOWN.

