

---

**harman/kardon**
**Service Manual**


---

# DVD 16/230

# DVD 18/230

## DVD players

Only sold with AVR 139 and AVR 141 as AVR/DVD combos 13916, 13918, 14116, 14118..



## CONTENTS

ESD PRECAUTIONS	2	TROUBLESHOOTING GUIDE	16
SERVICING PRECAUTIONS	3	TECHNICAL SPECIFICATIONS	17
OWNER'S MANUAL FRONT PAGE	5	SOFTWARE CHECK + UPGRADE	18
OM TABLE OF CONTENTS	6	TROUBLESHOOTING CHARTS	19
REMOTE CONTROL FUNCTIONS	7	EXPLODED VIEW	24
AVR/DVD SYSTEM CONNECTIONS	11	DVD 16 SERVICE PARTS	25
FEATURES	12	DVD 18 SERVICE PARTS	26
FRONT PANEL CONTROLS	13	PCB DRAWINGS	27
REAR PANEL CONNECTIONS	14	WIRING DIAGRAM	31
SETUP AND CONNECTIONS	15	SCHEMATIC DIAGRAMS	32-39

# ESD PRECAUTIONS

## Electrostatically Sensitive Devices (ESD)

Some semiconductor (solid state) devices can be damaged easily by static electricity . Such components commonly are called Electrostatically Sensitive Devices (ESD). Examples of typical ESD devices are integrated circuits and some field-effect transistors and semiconductor chip components. The following techniques should be used to help reduce the incidence of component damage caused by static electricity .

1. Immediately before handling any semiconductor component or semiconductor-equipped assembly , drain off any electrostatic charge on your body by touching a known earth ground. Alternatively, obtain and wear a commercially available discharging wrist strap device, which should be removed for potential shock reasons prior to applying power to the unit under test.
2. After removing an electrical assembly equipped with ESD devices, place the assembly on a conductive surface such as aluminum foil, to prevent electrostatic charge buildup or exposure of the assembly .
3. Use only a grounded-tip soldering iron to solder or unsolder ESD devices.
4. Use only an anti-static solder removal device. Some solder removal devices not classified as "anti-static" can generate electrical charges sufficient to damage ESD devices.
5. Do not use freon-propelled chemicals. These can generate electrical charges sufficient to damage ESD devices.
6. Do not remove a replacement ESD device from its protective package until immediately before you are ready to install it. (Most replacement ESD devices are packaged with leads electrically shorted together by conductive foam, aluminum foil or comparable conductive materials).
7. Immediately before removing the protective material from the leads of a replacement ESD device, touch the protective material to the chassis or circuit assembly into which the device will be installed.

**CAUTION : BE SURE NO POWER IS APPLIED TO THE CHASSIS OR CIRCUIT, AND OBSERVE ALL OTHER SAFETY PRECAUTIONS.**

8. Minimize bodily motions when handling unpackaged replacement ESD devices. (Otherwise harmless motion such as the brushing together of your clothes fabric or the lifting of your foot from a carpeted floor can generate static electricity sufficient to damage an ESD device).

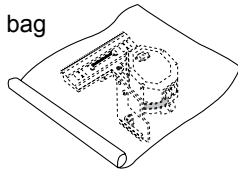
# SERVICING PRECAUTIONS

## NOTES REGARDING HANDLING OF THE PICK-UP

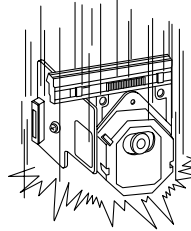
### 1. Notes for transport and storage

- 1) The pick-up should always be left in its conductive bag until immediately prior to use.
- 2) The pick-up should never be subjected to external pressure or impact.

Storage in conductive bag

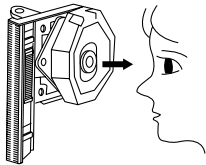


Drop impact



### 2. Repair notes

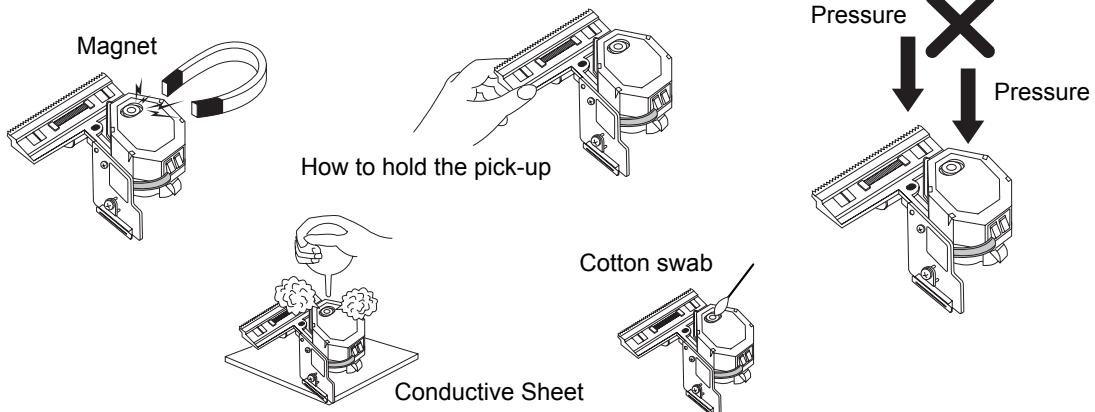
- 1) The pick-up incorporates a strong magnet, and so should never be brought close to magnetic materials.
- 2) The pick-up should always be handled correctly and carefully, taking care to avoid external pressure and impact. If it is subjected to strong pressure or impact, the result may be an operational malfunction and/or damage to the printed-circuit board.
- 3) Each and every pick-up is already individually adjusted to a high degree of precision, and for that reason the adjustment point and installation screws should absolutely never be touched.
- 4) Laser beams may damage the eyes!  
Absolutely never permit laser beams to enter the eyes!  
Also NEVER switch ON the power to the laser output part (lens, etc.) of the pick-up if it is damaged.



NEVER look directly at the laser beam, and don't let contact fingers or other exposed skin.

#### 5) Cleaning the lens surface

If there is dust on the lens surface, the dust should be cleaned away by using an air bush (such as used for camera lens). The lens is held by a delicate spring. When cleaning the lens surface, therefore, a cotton swab should be used, taking care not to distort this.



#### 6) Never attempt to disassemble the pick-up.

Spring by excess pressure. If the lens is extremely dirty, apply isopropyl alcohol to the cotton swab. (Do not use any other liquid cleaners, because they will damage the lens.) Take care not to use too much of this alcohol on the swab, and do not allow the alcohol to get inside the pick-up.

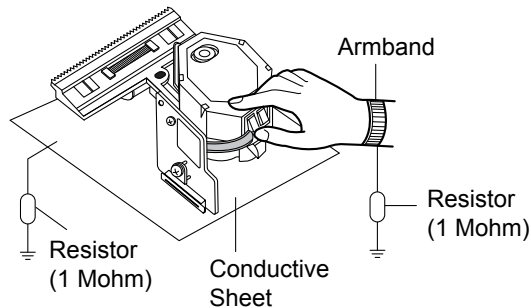
# NOTES REGARDING COMPACT DISC PLAYER REPAIRS

## 1. Preparations

- 1) Compact disc players incorporate a great many ICs as well as the pick-up (laser diode). These components are sensitive to, and easily affected by, static electricity. If such static electricity is high voltage, components can be damaged, and for that reason components should be handled with care.
- 2) The pick-up is composed of many optical components and other high-precision components. Care must be taken, therefore, to avoid repair or storage where the temperature of humidity is high, where strong magnetism is present, or where there is excessive dust.

## 2. Notes for repair

- 1) Before replacing a component part, first disconnect the power supply lead wire from the unit
- 2) All equipment, measuring instruments and tools must be grounded.
- 3) The workbench should be covered with a conductive sheet and grounded.  
When removing the laser pick-up from its conductive bag, do not place the pick-up on the bag. (This is because there is the possibility of damage by static electricity .)
- 4) To prevent AC leakage, the metal part of the soldering iron should be grounded.
- 5) Workers should be grounded by an armband (1M  $\Omega$ )
- 6) Care should be taken not to permit the laser pick-up to come in contact with clothing, in order to prevent static electricity changes in the clothing to escape from the armband.
- 7) The laser beam from the pick-up should NEVER be directly facing the eyes or bare skin.



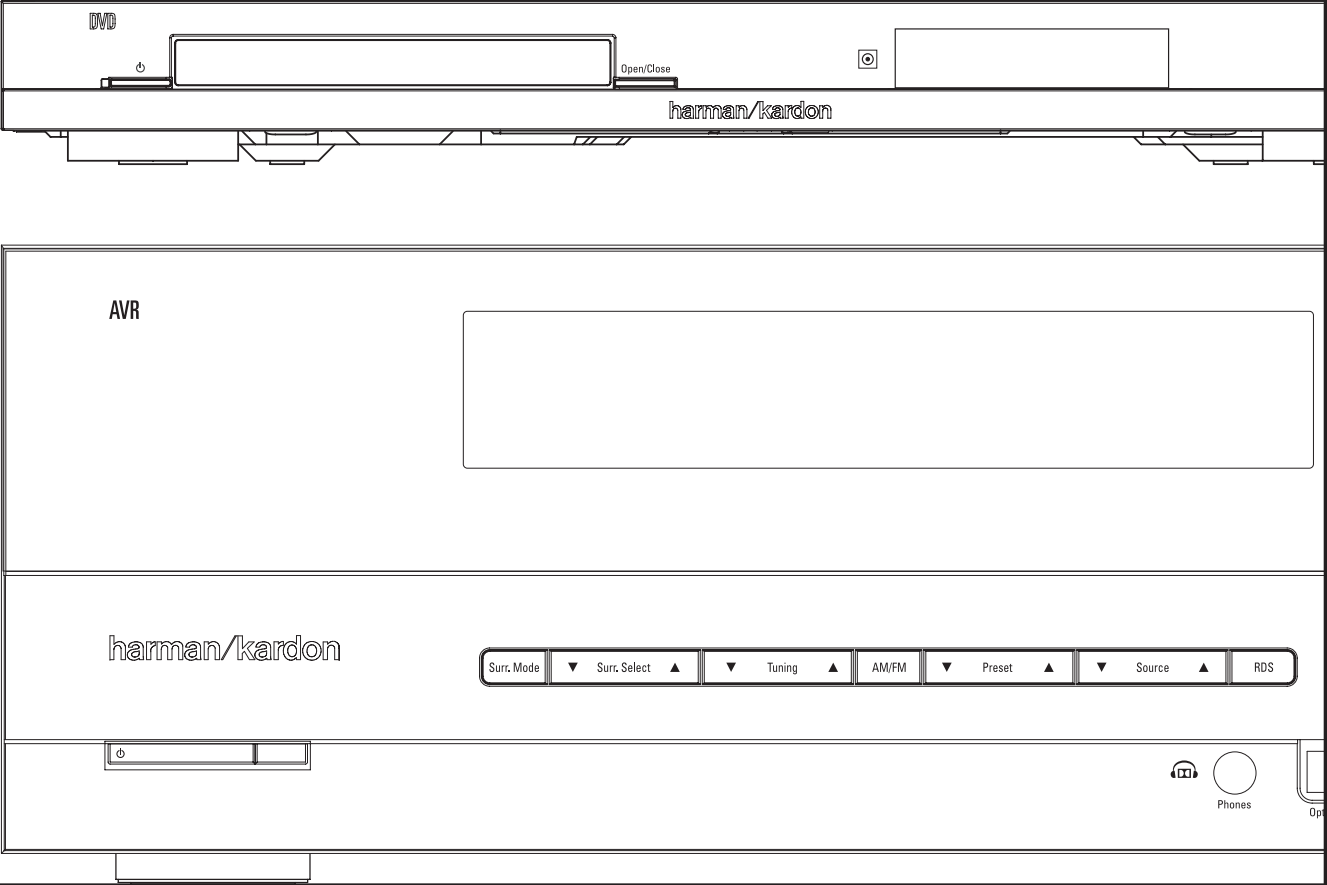
AVR/DVD System

AVR Audio/Video Receiver

DVD Digital Versatile Disc Player

This owner's manual  
covers any combination  
of AVR 139, AVR 141,  
DVD 16 and DVD 18.

OWNER'S MANUAL



## Table of Contents

3	Safety Information	18	Operation	DVD
3	Unpacking	18	Basic Operation	26 Terminology
4	Remote Control Functions	18	Turning the AVR On and Off	27 Features, Packing List
AVR		18	Using the Sleep Timer	28 Front Panel Controls
8	Front Panel Controls	18	Source Selection	29 Rear Panel Connections
10	Rear Panel Connections	18	Controls and Use of Headphones	30 Setup and Connections
12	Installation and Connections	18	Surround Mode Selection	30 Digital Audio Connections
12	Audio Equipment Connections	19	Digital Audio Playback	31 Playback Basics
12	Video Equipment Connections	20	Selecting a Digital Source	31 Basic Play
13	HDMI Connections	20	Digital Status	31 Disc Playback Features
14	System Configuration	20	Surround Mode Types	31 About DivX Movie Files
14	First Turn On	21	Night Mode	32 DVD Player Set-up
14	Settings to be Made With Each Input Used	21	Tape Recording	32 System Defaults
14	Input Setup	21	Output Level Trim Adjustment	32 Set Up Menu
14	Speaker Setup	21	6-Channel Direct Input	34 Player Menu
15	Surround Setup	21	Display Brightness	34 Using the On-Screen Status Display
15	Configuring the Surround Off (Stereo) Modes	22	Memory Backup	35 CD Playback
15	Stereo-Direct (Bypass) Mode	22	Tuner Operation	36 MP3 and JPEG Playback
16	Stereo Digital Mode	22	RDS Operation	38 Troubleshooting Guide
16	Delay Settings/LipSync	24	Troubleshooting Guide	39 Technical Specifications DVD
16	Night Mode Settings	24	Processor Reset	
16	Output Level Adjustment	25	Technical Specifications AVR	

### Typographical Conventions

To help you use this manual with the remote control, front-panel controls and rear-panel connections, certain conventions have been used.

**Example** – (bold type) indicates a specific remote control or front-panel button, or rear-panel connection jack

**EXAMPLE** – (OCR type) indicates a message that is visible on the front-panel information display

**1** – (number in a square) indicates a specific front-panel control

**1** – (number in a circle) indicates a rear-panel connection

**1** – (number in an oval) indicates a button or indicator on the remote.

### Instructions for users on removal and disposal of used batteries.

#### Specification of included battery types.



These symbols shown on the product, the packaging or in the manual or separate information sheet mean that the product itself, as well as the batteries included or built into the product, should never be thrown away with general household waste. Take them to applicable collection points, where proper treatment, recycling and recovery takes place, in accordance with national or local legislation, or European Directives 2002/96/EC and 2006/66/EC.

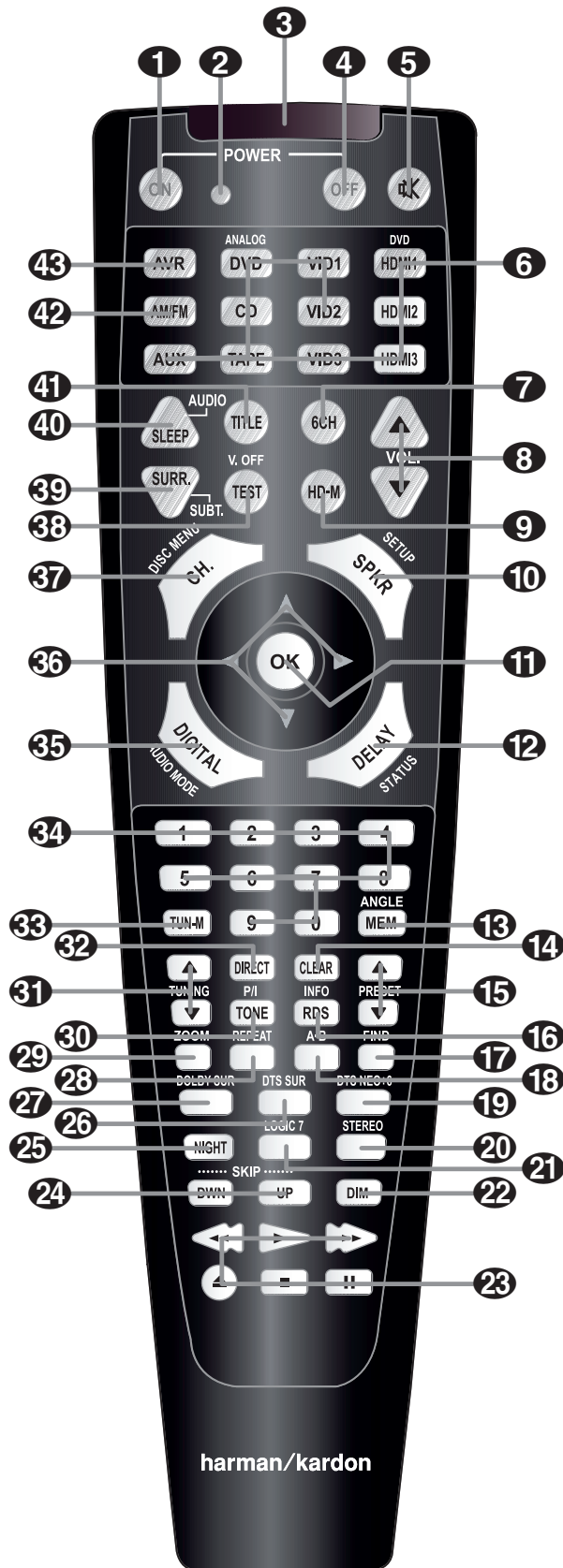
Correct handling of the product and batteries to be disposed helps saving resources and prevents possible negative effects on the environment or human health.

The batteries included with your equipment may be Alkaline, Carbon Zink/ Manganese or Lithium (button cells) type. All types should be disposed of according to the above instructions.

To remove the batteries from your equipment or remote control, reverse the procedure described for inserting batteries in the Owners Manual.

For products with a built-in battery that lasts for the lifetime of the product, removal may not be possible for the user. In this case, recycling or recovery centers handle the dismantling of the product and the removal of the battery. If, for any reason, it becomes necessary to replace such a battery, this procedure must be performed by authorized service centers.

## Remote Control Functions for Receiver and DVD Player System



- ➊ Power On Button
- ➋ Not active
- ➌ IR Transmitter Window
- ➍ Power Off Button
- ➎ Mute
- ➏ Input Selectors
- ➐ 6-Channel Direct Input
- ➑ Volume Up/Down
- ➒ HD Mode Selector
- ➓ Speaker Select/Setup
- ➔ OK Button
- ➕ Delay/Status Button
- ➖ Memory/Angle Button
- ➗ Clear Button
- ➘ Preset Up/Down
- ➙ RDS Select
- ➚ Find Button
- ➛ A-B
- ➜ DTS Neo:6 Mode Selector
- ➝ Stereo Mode Selector
- ➞ Logic 7 Selector
- ➟ Dim Button
- ➠ Transport Buttons
- ➡ Skip Up/Down Buttons (DWN)/(UP)
- Night Mode
- ➣ DTS Digital Mode Selector
- Dolby Mode Selector
- ➥ Repeat
- ➦ Zoom Button
- ➧ Tone Mode/Progressive Scan/Interlaced Button
- ➨ Tuning Up/Down
- ➩ Direct Button
- ➪ Tuner Mode Button
- ➫ Numeric Keys
- ➬ Digital Select/Audio Mode
- ➭ Navigation Buttons
- ➮ Channel Select /Disc Menu Button
- ➯ V.OFF/Test Button
- ➰ Surround Mode Selector/Subtitle Button
- ➱ Sleep/Program Up/Audio Select Button
- ➲ Title
- ➳ AM/FM Tuner Select
- ➴ AVR Selector

## Remote Control Functions, common for AVR and DVD

**IMPORTANT NOTE:** The combined AVR and DVD remote has some buttons that perform different functions. If you press the **AVR Button 43**, one set of functions is active, identical to the functions for buttons CD, Tape, Video 1/2/3. If you press the **DVD/HDMI1 Button 6**, some of the buttons change their function as indicated above the button itself, and explained below. Refer to the function table for an overview of functions in both modes. NOTE that pressing the **HDMI1** and **DVD Buttons 6** activate the alternative commands as seen in the Function List on page 7.

**1 Power On Button:** Press this button to turn on the power to the AVR or the DVD selected by pressing either the **AVR** or the **DVD/HDMI1 Button 43** or **6**.

**2 This indicator is not active.**

**3 IR Transmitter Window:** Point this window towards the AVR when pressing buttons on the remote to make certain that infrared commands are properly received.

**4 Power Off Button:** Press this button to place the AVR or a selected device unit in the Standby mode. If held for more than 3 seconds, both the AVR and the DVD switch to Standby.

**5 Mute:** Press this button to momentarily silence the AVR or TV set being controlled, depending on which device has been selected.

**6 Input Selectors:** Pressing one of these buttons will perform three actions at the same time. First, if the AVR is not turned on, this will power up the unit. Next, it will select the source shown on the button as the input to the AVR. Finally, the DVD/HDMI1 Button will switch the double-function remote buttons to their DVD functions. After pressing the DVD/HDMI1 Button, you must press the **AVR Selector button 43** again to operate all the AVR's functions with the remote. Note that pressing the DVD Button switches on BOTH the AVR and the DVD, whereas pressing the AVR Button just switches on the AVR.

**7 6-Channel Direct Input:** Press this button to select the component connected to the **6-Channel Direct Input 24** as the audio. Note that when you wish to use the Six Channel Direct Input in conjunction with a video source, you must first select the video source by pressing one of the **Input Selectors 6**. Then press this button to choose the **6-Channel Direct Input 24** as the audio source.

**8 Volume Up/Down:** Press these buttons to raise or lower the system volume.

**9 HD Mode Selector (DVD):** When the DVD player is connected to a video display using the **HDMI Output 11**, the display sends information to the DVD indicating the highest video resolution it is capable of handling, and the DVD automatically sets the video output to match it. Pressing this button allows you to manually change the output resolution, with your selection indicated by the **Video Output Indicators 0**.

The HD-M button does allow you to force the DVD player to output video at a resolution that your TV does not support. If this happens, your TV screen may go blank or may display "Unsupported Format". If this occurs:

1. Wait 10 seconds.
2. Press the HD-M button, then the Left Navigation button, then the OK button.

If the video does not recover, repeat steps 1 and 2 again.

**10 Speaker Select/Setup:** Press this button to begin the process of configuring the AVR's Bass Management System for use with the type of speakers used in your system. Once the button has been pressed, use the **▲ ▼ buttons 36** to select the channel you wish to set up. Press the **OK button 11** and then select the speaker type (see page 14 for more information.)

For DVD: Press this button to use the DVD's on-screen menu system to adjust the player's configuration settings. Note that the **Info Button 7** must be pressed to access the DVD's Information menu to obtain detailed disc information, and to configure the playback mode of the disc.

**11 OK Button:** This button is used to enter settings into the AVR's memory. It is also used in the setup procedures for delay time, speaker configuration and channel output level adjustment.

**12 Delay/Status Button:** Press this button to begin the process for setting delay times and lip sync delay. (See page 16 for more information).

For DVD: Press while a disc is playing to view banner display. Use the ARROW buttons to move through the different features in the Banner Display. When a symbol is highlighted, press OK on the remote to select it.

**13 Memory/Angle Button:** Press this button to enter a radio station into the AVR's preset memory. Two underline indicators will flash at the right side of the **Main Information Display 16**, you then have five seconds to enter a preset memory location using the **Numeric Keys 34**. (See page 22 for more information.)

For DVD: Press to access various camera angles on a DVD (If the DVD contains multiple camera angles) or to rotate JPEG images.

**14 Clear Button:** Press this button to clear incorrect entries when using the remote to directly enter a radio station's frequency.

**15 Preset Up/Down:** When the tuner is in use, press these buttons to scroll through the stations programmed into the AVR's memory. When CD or DVD is selected using the **Input Selector button 6**, these buttons may function as Slow Fwd/Rev (DVD) or "+10" (CD).

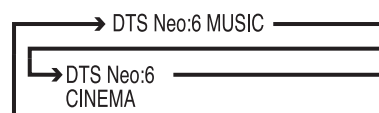
**16 RDS Select/Info (DVD) Button:** Press this button to display the various messages that are part of the RDS data system of the AVR's tuner. (See page 22 for more information on RDS).

For DVD: Press for detailed informations on the disc playing (Video/Audio Bit rate, Movie aspect ratio and others), and for current player settings made. Note that the unit doesn't react on any transport button as long as the info menu is displayed. Press again to remove information from screen.

**17 Find (DVD):** Press this button to search for a specific location on the disc.

**18 A-B (DVD):** Press to select section A-B and to play repeatedly.

**19 DTS Neo:6 Mode Selector:** Pressing this selector button cycles the AVR through the various DTS Neo:6 modes, which extract a five-channel surround field from two-channel program material (from PCM source or analog input signal). The first press selects the last DTS Neo:6 surround mode that was in use, and each subsequent press selects the next mode in the following order:





## Remote Control Functions, common for AVR and DVD

**20 Stereo Mode Selector:** Press this button to select a stereo playback mode. When the button is pressed so that **DSP SURR OFF** appears in the **Main Information Display 16**, the AVR will operate in a bypass mode with true fully analog, two-channel left/right stereo mode with no surround processing or bass management as opposed to other modes where digital processing is used. When the button is pressed so that **SURROUND OFF** appears in the **Main Information Display 16**, you may enjoy a two-channel presentation of the sound along with the benefits of bass management. When the button is pressed so that **5 CH STEREO** appears, the stereo signal is routed to all five speakers, if installed. (See page 15 for more information on stereo playback modes).

**21 Logic 7 Selector:** Press this button to select one of the available Logic 7 surround modes. (See page 19 for the available Logic 7 options).

**22 Dim Button:** Press this button to activate the Dimmer function, which reduces the brightness of the front panel display, or turn it off entirely. The first press of the button shows the default state, which is full brightness by indicating **VFD FULL** in the **Main Information Display 16**. Press the button again within five seconds to reduce the brightness by 50%, as indicated by **VFD HALF**. Press the button again within five seconds and the main display will go completely dark. Note that this setting is temporary; the display will always return to full brightness when the AVR is turned on. In addition, both the **Power Indicator 3** and the blue accent lighting inside the volume control will always remain at full brightness regardless of the setting. This is to remind you that the AVR is still turned on.

**23 Transport Buttons:** These buttons operate the DVD player.

**24 Skip Up/Down Buttons (DVD):**

**(DWN):** Press to go to beginning of current track. Press again quickly to go to beginning of previous track. After pressing the **PAUSE** button, each press of this button will move the image in reverse frame by frame.

**(UP):** Press to go to beginning of next track. After pressing the **PAUSE** button, each press of this button will move the image forwards frame by frame.

**25 Night Mode:** Press this button to activate the Night mode. This mode is available only with Dolby Digital encoded digital sources, and it preserves dialog (center channel) intelligibility at low volume levels (See page 16 for more information).

**26 DTS Digital Mode Selector:** When a DTS source is in use the AVR will select the appropriate mode automatically and no other mode will be available. Pressing this button will display the mode currently selected by the AVR's decoder, depending on the surround material played and the speaker setting.

**27 Dolby Mode Selector:** This button is used to select one of the available Dolby Surround processing modes. Each press of this button will select one of the Dolby Pro Logic II modes, Dolby 3 Stereo or Dolby Digital. Note that the Dolby Digital mode is only available with a digital input selected and the other modes only as long as a Dolby Digital source is not playing.

**28 Repeat (DVD):** Each press of this button changes the playback mode to repeat a chapter or track or the entire disc. A repeat icon will appear in the upper right corner of the screen indicating the current repeat mode. If the Player Information Screen is active, the changes will be displayed on screen.

**29 Zoom Button:** When a DVD is playing, press this button to zoom the picture so that it is enlarged. There are 4 steps to the zoom function, each progressively larger. Press through each of the zoom stages to return to a normal picture.

**30 Tone Mode/Progressive Scan/Interlaced Button:** Pressing this button enables or disables the Bass and Treble tone controls. When the button is pressed so that the words **TONE IN** appear in the **Main Information Display 16**, the settings of the **Bass** and **Treble** controls will affect the output signals. When the button is pressed so that the words **TONE OUT** appear in the **Main Information Display 16**, the output signal will be "flat," without any bass or treble alteration.

For DVD: Press this button to change the resolution of the Component Video Output between standard definition and progressive definition (PAL interlaced and PAL progressive; NTSC interlaced and NTSC progressive).

The new setting will become effective after quitting the Setup menu.

**31 Tuning Up/Down:** When the tuner is in use, these buttons will tune up or down through the selected frequency band. If the **Tuner Mode** button **33** has been pressed or the **Band** button **9** on the front panel was held pressed so that **AUTO** appears in the **Main Information Display 16**, pressing either of the buttons will cause the tuner to seek the next station with acceptable signal strength for quality reception. When the **MANUAL** appears in the **Main Information Display 16**, pressing these buttons will tune stations in single-step increments. (See page 22 for more information).

**32 Direct Button:** Press this button when the tuner is in use to start the sequence for direct entry of a station's frequency. After pressing the button simply press the proper **Numeric Keys 34** to select a station (See page 22 for more information on the tuner).

**33 Tuner Mode:** Press this button when the tuner is in use to select between automatic tuning and manual tuning. When the button is pressed so **MANUAL** appears in the **Main Information Display 16**, pressing the **Tuning** buttons **31 8** will move the frequency up or down in single-step increments. When the FM band is in use and **AUTO** appears in the **Main Information Display 16**, pressing this button will change to monaural reception making even weak stations audible. (See page 22 for more information.)

**34 Numeric Keys:** These buttons serve as a ten-button numeric keypad to enter tuner preset positions. For DVD play you may enter track numbers directly, followed by OK to go to the track.

**35 Digital Select/Audio Mode:** Press this button to assign one of the digital inputs **5 17 10 22** to a source. (See page 12 for more information on using digital inputs.) **Audio Mode:** When operating the DVD, press this button to switch between Audio Modes.

**36 Navigation Buttons:** These buttons are used to increase or decrease output levels when configuring the unit, to select speaker configuration or to select the digital inputs.

**37 Channel Select /Disc Menu Button:** This button is used to start the process of setting the AVR's output levels with an external source. Once this button is pressed, use the **▲ ▼** buttons **36** to select the channel being adjusted, then press the **OK** button **11**, followed by the **▲ ▼** buttons again, to change the level setting. (See page 21 for more information.)

**DVD Disc Menu:** Displays the actual DVD Disc Menu on the TV screen in play mode. When playing discs with JPEG images, pressing this button will access the thumbnails.

**38 V.OFF/Test Button:** Press to turn off video output for improved performance from audio-only discs. Press again to restore video output.

**Tone:** Press this button to begin the sequence used to calibrate the AVR's output levels. (See page 16 for more information on calibrating the AVR).

## Remote Control Functions, common for AVR and DVD

### 39 Surround Mode Selector/Subtitle Button:

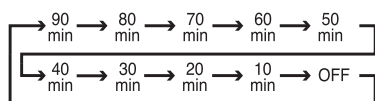
Press this button repeatedly to select an available surround mode.

When a DVD is playing, press to select a subtitle language or to turn subtitles off.

**Note:** Due to the variations in how DVD discs are authored, the subtitle languages selected with the Subtitle Button may not accurately reflect the actual languages available on the disc. It is recommended that subtitles be selected using the disc's menu.

### 40 Sleep/Program Up>/Audio Select Button:

Press this button to place the unit in the Sleep mode. After the time shown in the display, the AVR will automatically go into the Standby mode. Each press of the button changes the time until turn-off in the following order:



Hold the button pressed for two seconds to turn off the Sleep mode setting.

Note that this button is also used to change channels on your TV, VCR and SAT receiver when selected.

DVD: Press to access various audio languages on a DVD (If the DVD contains multiple audio streams).

**41 Title:** When a disc is playing, press to make the DVD-player go back to the first section of the disc. If you are playing a DVD-Audio disc, pressing this button returns you to the Disc Menu with most DVD-A discs.

**42 AM/FM Tuner Select:** Press this button to select the AVR's tuner as the listening choice. Pressing this button when the tuner is in use will select between the AM and FM bands.

**43 AVR Selector:** Pressing this button will switch the remote so that it will operate the AVR's functions. If the AVR is in the Standby mode, it will also turn the AVR on.

### Function List

Button Name	HK AVR Remote Command AVR/TAPE/CD/AUX/VID1/VID2/VID3/HDMI2/HDMI3	HK DVD Remote Command DVD/HDMI1
<b>Power ON</b>	Power On	Power On
<b>Power OFF</b>	Power Off (press and release) Power Off (press and hold)	Power Off (press and release) Power Off (press and hold)
<b>Mute</b>	Mute	Mute(AVR)
<b>AVR</b>	AVR Power On	AVR(AVR)
<b>DVD</b>	DVD	DVD(AVR)
<b>VID1</b>	VID 1	VID 1(AVR)
<b>HDMI1</b>	HDMI 1	HDMI 1(AVR)
<b>AM/FM</b>	AM/FM	AM/FM(AVR)
<b>CD</b>	CD	CD(AVR)
<b>VID2</b>	VID 2	VID 2(AVR)
<b>HDMI2</b>	HDMI 2	HDMI 2(AVR)
<b>AUX</b>	AUX	AUX(AVR)
<b>TAPE</b>	TAPE	TAPE(AVR)
<b>VID3</b>	VID 3	VID 3(AVR)
<b>HDMI3</b>	HDMI 3	HDMI 3(AVR)
<b>SLEEP / AUDIO</b>	Sleep	Audio
<b>TITLE</b>		Title
<b>6CH</b>	6CH	6CH(AVR)
<b>VOL Up</b>	Vol Up	Vol Up(AVR)
<b>SURR. / SUBT.</b>	Surround Mode	Subtitle
<b>TEST / V.OFF</b>	Test Tone	Video Off
<b>HD-M</b>		HD Mode
<b>VOL Down</b>	Vol Down	Vol Down(AVR)
<b>CH. / DISC MENU</b>	Channel Select	Disc Menu
<b>SPKR / SETUP</b>	Speaker Select	Setup
<b>Level+ /Up</b>	Level+ /Up	Up
<b>Left M</b>	Left	Left
<b>OK</b>	SET	Enter
<b>Right n</b>	Right	Right
<b>Level- /Down</b>	Level- /Down	Down
<b>DIGITAL / AUDIO MODE</b>	Digital Select	Audio Mode
<b>DELAY / STATUS</b>	Delay	Status
<b>1</b>	1	1
<b>2</b>	2	2
<b>3</b>	3	3
<b>4</b>	4	4
<b>5</b>	5	5
<b>6</b>	6	6
<b>7</b>	7	7
<b>8</b>	8	8
<b>TUN-M</b>	Tuner Mode	
<b>9</b>	9	9
<b>0</b>	0	0
<b>MEM / ANGLE</b>	Memory	Angle
<b>TUNING Up</b>	Tuning Up	
<b>DIRECT</b>	Direct Tuning	
<b>CLEAR</b>	Clear	Clear
<b>PRESET Up</b>	Preset Up	Slow Up
<b>TUNING Down</b>	Tuning Down	
<b>TONE / P/I</b>	Tone Mode	P/I
<b>RDS / INFO</b>	RDS	Info
<b>PRESET Down</b>	Preset Down	Slow Down
<b>ZOOM</b>		Zoom
<b>REPEAT</b>		Repeat Play
<b>A-B</b>		A-B Repeat Play
<b>FIND</b>		Search
<b>DOLBY SUR</b>	Dolby Surround	Dolby Surround(AVR)
<b>DTS SUR</b>	DTS Surround	DTS Surround(AVR)
<b>DTS NEO:6</b>	DTS NEO:6	DTS NEO:6(AVR)
<b>NIGHT</b>	Night Mode	Night(AVR)
<b>LOGIC 7</b>	Logic7	Logic7(AVR)
<b>STEREO</b>	Stereo	Stereo(AVR)
<b>SKIP DOWN</b>	Skip Down(DVD)	Skip Down
<b>SKIP UP</b>	Skip Up(DVD)	Skip Up
<b>DIM</b>	Dimmer	Dimmer
<b>Rew(◀)</b>	Rew(DVD)	Rew
<b>Play(▶)</b>	Play(DVD)	Play
<b>FF(▶▶)</b>	FF(DVD)	FF
<b>Open/Close</b>	Open/Close(DVD)	Open/Close
<b>Stop</b>	Stop(DVD)	Stop
<b>Pause</b>	Pause(DVD)	Pause

## Rear Panel Connections

**12 Video Monitor Output:** Connect these jacks to the composite input of a TV monitor or video projector to view the output of any video source selected by the receiver's video switcher.

**13 HDMI Inputs:** Connect the HDMI output of video sources such as a DVD player, set-top box or HDTV tuner to either of these jacks.

**14 HDMI Output:** Connect this jack to the HDMI input on a compatible HDMI-equipped video display.

**15 Monitor Component Video Outputs:** Connect these outputs to the component video inputs of a video projector or monitor. When a source connected to one of the two **Component Video Inputs 9 16** is selected the signal will be sent to these jacks.

**16 Video 2 Component Video Inputs:** Connect the Y/Pr/Pb component video outputs of a DVD player to these jacks.

**Note:** All component inputs/outputs can be used for RGB signals too, in the same way as described for the Y/Pr/Pb signals, then connected to the jacks with the corresponding color.

RGB connection is not possible if the source outputs a separate sync signal (see page 13).

**17 AC Power Cord:** Connect the AC plug to an unswitched AC wall output.

**18 DVD Video Inputs:** Connect these jacks to the composite output jacks on a DVD player or other video source.

**19 Video 1 Video Outputs:** Connect these jacks to the **RECORD/INPUT** composite jack on a VCR.

**20 Video 2 Audio Inputs:** Connect these jacks to the **PLAY/OUT** audio jacks on a VCR or other video source.

**21 Video 2 Video Inputs:** Connect these jacks to the **PLAY/OUT** composite jacks on a second VCR or other video source.

**22 Optical Digital Inputs:** Connect the optical digital output from a DVD player, HDTV receiver, LD player, MD player or CD player to these jacks. The signal may be either a Dolby Digital signal, a DTS signal or a standard PCM digital source.

**23 Video 1 Video Inputs:** Connect these jacks to the **PLAY/OUT** composite jacks on a TV or other video source.

**24 6-Channel Direct Inputs:** These jacks are used for connection to source devices such as DVD-Audio or SACD players with discrete analog outputs.

**25 Digital Audio Output:** Connect this jack to the matching digital input connector on a digital recorder.

**26/27/29 Front/Center Speaker Outputs:** Connect these outputs to the matching + or – terminals on your front/center speakers. When making speaker connections, always make certain to maintain correct polarity by connecting the red (+) terminals on the AVR to the red (+) terminals on the speaker and the black (–) terminals on the AVR to the black (–) terminals on the speakers. (See page 14 for more information on speaker polarity.)

**28/30 Surround Speaker Outputs:** Connect these outputs to the matching + or – terminals on your left and right surround speakers. When making speaker connections always make certain to maintain correct polarity by connecting the red (+) terminals on the AVR to the red (+) terminals on the speakers and the black (–) terminals on the AVR to the black (–) terminals on the speakers. See page 14 for more information on speaker polarity.

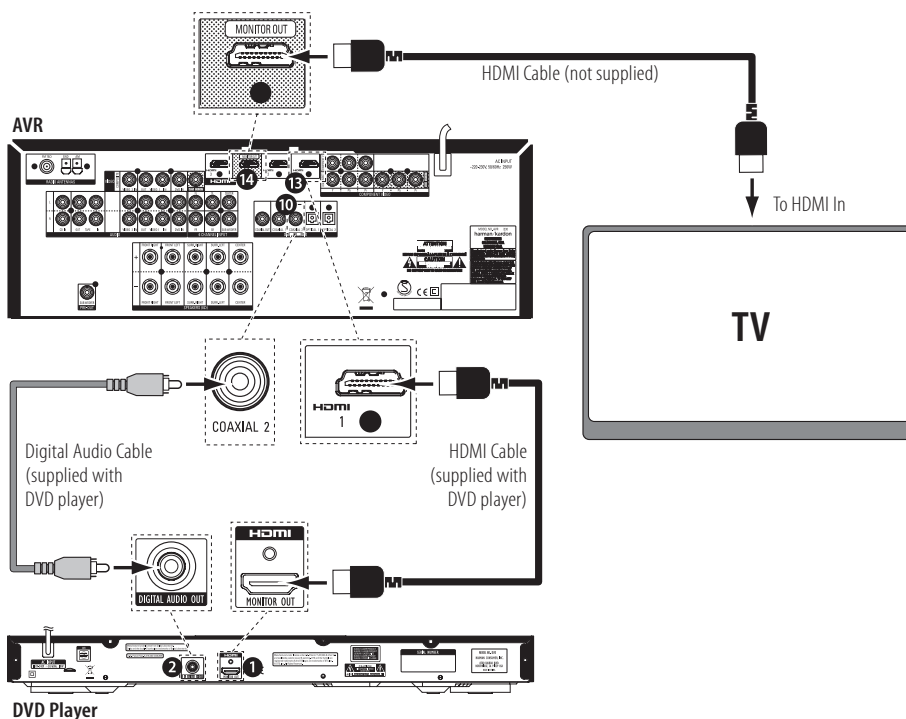
## AVR/DVD System Connections

### AVR/DVD System Connection Instructions:

Connect your system like this, using the HDMI cable and the digital audio cable included with the DVD player:

1. Connect the DVD player's HDMI output **1** to the receiver's HDMI 1 input **13**. NOTE: Do not use any other input for this connection.
2. Connect the DVD player's Digital Audio Out **2** to the receiver's Coaxial 2 digital audio input **10**. NOTE: Do not use any other input for this connection.
3. Connect the receiver's HDMI Monitor Out **14** to your TV's HDMI input connector.

**IMPORTANT:** You MUST connect the DVD Player's Coaxial Digital Output to the AVR Receiver's Coaxial Digital Input 2 to hear Dolby Digital and DTS surround sound through your new AVR/DVD system.



## Features

### High quality video

- High Definition Multimedia Interface (HDMI) for a single wire, digital connection to your HD-Ready screen.
- Advanced sophisticated 10-bit MPEG-2 video decoding circuits.
- Pure PAL with NTSC disc due to true NTSC/PAL conversion.
- Dual-layer compatibility for extended play DVD.
- Playback of JPEG image files

### High quality digital audio

- By connecting a DTS or a Dolby Digital decoder, you can enjoy high quality 5.1 digital surround sound from DTS or Dolby Digital discs.
- With linear PCM audio at 16-24 bits and
- 44-96 kHz (also on digital output, see table page 30), audio quality exceeding that of CD becomes possible.
- Coaxial digital audio output.

### Many convenient features

- On-Screen Menu for disc information or player information.
- Subtitles may be displayed in one of numerous languages\*.
- The multi-angle function allows you to choose the viewing angle of scenes which were shot from a number of different angles (Limited to DVD's recorded with multiple camera angles.)
- Multiple options for dialog language and soundtrack selection (limited to DVD's recorded with multiple dialog languages or soundtracks).
- 4-step Zoom during play and pause.
- Backlit, ergonomically designed remote control.

\* The number of languages recorded depends on the software.

### Compatible with CD as well as DVD

The DVD player will play any conventional Audio CD or recordable (CD-R) or erasable CD (CD-RW), MP3 or any DVD/Video disc with the region code 0 or 2.

### Disc formats supported by this player

The unit can play the following disc formats (8 cm and 12 cm size):

- DVD
- DVD-R
- DVD-RW
- DVD+R
- DVD+RW
- CD
- CD-R
- CD-RW

**NOTE:** Due to differences in the format of certain discs, it is possible that some discs may include a mix of features that are not compatible with the DVD player. Similarly, although the DVD player is capable of a wide range of features, not all discs include every capability of the DVD system. For example, although the DVD player is compatible with multi-angle discs, that feature is only possible when the disc is specially encoded for multiple angle play. In addition, the DVD player is capable of playing back both Dolby Digital and DTS soundtracks, but the number and types of tracks available will vary from disc to disc. To make certain that a specific feature or soundtrack option is available, please check the options noted on the disc jacket.

■ Playback capability for CD-R, CD-RW, JPEG, MP3, DivX, DVD-R, DVD+R, DVD-RW and DVD+RW discs may vary due to variations in the quality of the disc and the recorder used to create the disc.

■ The DVD player is compatible with most discs recorded with files encoded using MP3 as well as JPEG still images. However, note that variations in the encoder or codec used and the bit rate of the encoding may affect the DVD player's ability to play back a specific disc. As a result, we cannot guarantee complete compatibility with all encoders and versions of the codecs. For best results, we recommend that MP3 files be encoded at bit rates ranging between 32kbps and 320kbps. JPEG files should contain no more than 5 megapixels, and the file size should be no larger than 5Mb.

### The DVD player will NOT play the following:

- DVD discs with a Region Code other than 2
- DVD-ROM data discs
- DVD-RAM discs
- DVD-Audio discs
- SACD discs
- CD-I discs
- CD-G discs
- SVCD discs
- Kodak Photo CD™ discs (Kodak Picture CD discs, available to consumers, may be viewed using the DVD).
- Discs intended for use in video game consoles
- Discs recorded in the "VR" mode or at any speed other than "SP"
- High-definition optical discs such as WMVHD, HD-DVD and Blu-ray

### Packing List

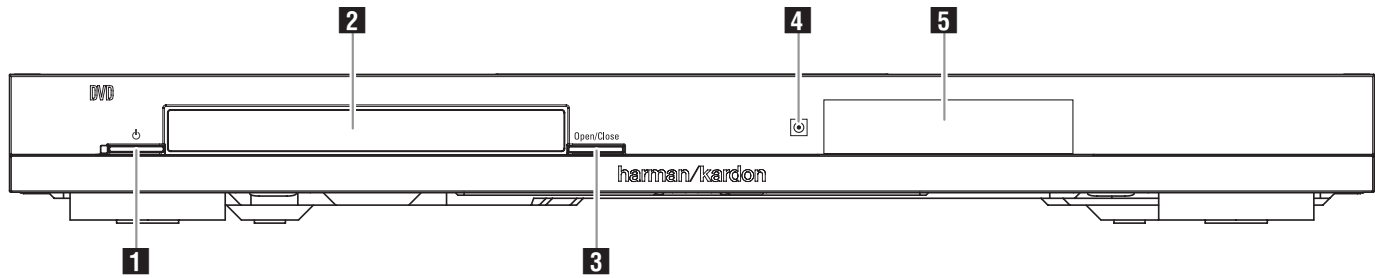
- 1 Harman Kardon DVD Player
- 1 Coaxial digital audio cable
- 1 HDMI cable

**NOTE:** This player is designed and manufactured for compatibility with Region Management Information that is encoded on most DVD discs. This player is designed only for playback of discs with Region Code 2, or for discs that do not contain Region Code information. If there is any other Region Code on a disc, that disc will not play on the DVD player.



CLASS 1  
LASER PRODUCT

## Front Panel Controls



- |                            |                              |
|----------------------------|------------------------------|
| <b>1</b> Power Button      | <b>4</b> IR Remote Receiver  |
| <b>2</b> Disc Drawer       | <b>5</b> Information Display |
| <b>3</b> Open/Close Button |                              |

**1 Power Button:** Press the button once to turn the DVD player on, press it again to put the player in the Standby mode.

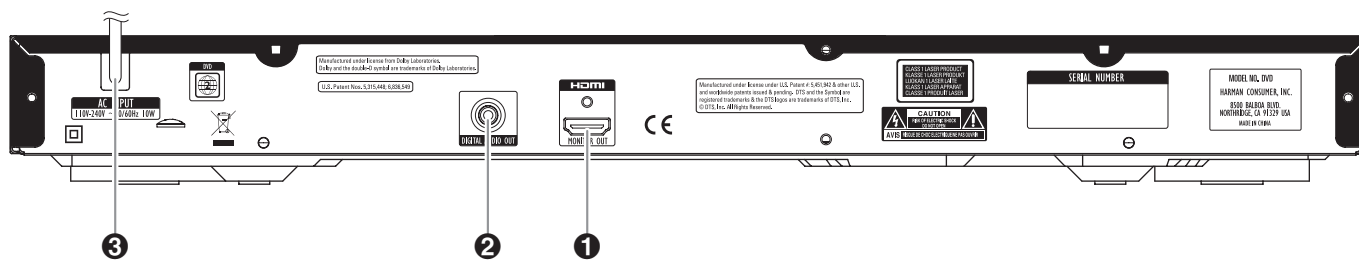
**2 Disc Drawer:** Insert a compatible disc into the drawer. The DVD player will accept 5-inch (12cm) and 3-inch (8cm) discs.

**3 Open/Close Button:** Press this button to open and close the disc drawer. Before pressing this button, make sure no objects are blocking the disc drawer.

**4 IR Remote Receiver:** This receives infrared signals from the remote control. Aim the remote at this area and do not block or cover it.

**5 Information Display:** This 7-character alphanumeric display delivers messages and status indications to help you operate the DVD player.

## Rear Panel Connections



- ① HDMI Output
- ② Coaxial Digital Output
- ③ AC Power Cord

**① HDMI Output:** Connect this output to an HDMI input on the receiver or video display for the highest-quality uncompressed digital audio and video available. Even if your receiver is not capable of processing audio in the HDMI format, you may still experience the superb reproduction of HDMI video.

The AVR Receiver in your AVR/DVD system can switch between three HDMI inputs and send the video signal to your screen from its HDMI Output. No surround sound decoding takes place in the Receiver from HDMI inputs, so no surround sound will be heard if only HDMI is connected. You **MUST** connect the DVD Player's Coaxial Digital Output to the AVR Receiver's Coaxial Digital Input 2 to hear Dolby Digital and DTS surround sound through your new AVR/DVD system.

If your video display has a DVI input, you may use an optional HDMI-to-DVI cable or adapter for the connection to the display.

In all cases, the video display must be HDCP-compliant in order to use the HDMI output.

For best results, we do not recommend HDMI connections in excess of 3m (10 ft).

**② Coaxial Digital Output:** Connect this jack to the coaxial digital input of an A/V receiver or surround processor for Dolby Digital, DTS or PCM audio playback.

The AVR Receiver in your AVR/DVD system has two coaxial digital inputs. Be sure to connect the DVD player's Coaxial Digital Output to the Receiver's Coaxial Digital Input 2. You **MUST** connect the DVD Player's Coaxial Digital Output to the AVR Receiver's Coaxial Digital Input 2 to hear Dolby Digital and DTS surround sound through your new AVR/DVD system.

**Note:** The coaxial digital output should only be connected to a digital input. Even though it is the same RCA-type connector as standard analog audio connections, **DO NOT** connect it to a conventional analog input jack.

**③ AC Power Cord:** Connect this plug to an AC outlet. If the outlet is controlled by a switch, make certain that it is in the ON position.

**Note:** You'll find more details about all Audio/Video connections under Setup and Connections on the following pages.



## Setup and Connections

### Before connecting your DVD player, please:

- Ensure that the power switch of this unit and other equipment to be connected is set to off before commencing connection.
- Do not block ventilation holes of any of the equipment and arrange them so that air can circulate freely.
- Read through the instructions before connecting other equipment.
- Ensure that you observe the color coding when connecting audio and video cables.

With a single cable connection between components, HDMI is able to deliver uncompressed high-definition digital video and digital audio programming. Please note that the AVR Receiver in this system does not process audio through HDMI. Therefore, a separate digital audio connection must be established between the DVD player and AVR.

**Note:** If your video display has a DVI input, you may use an optional HDMI-to-DVI cable or adapter for the connection to the display. In all cases, the video display must be HDCP-compliant in order to use the HDMI output.

If you're connecting to a different audio/video receiver that processes audio through HDMI, connect the DVD player's HDMI output to one of the receiver's HDMI inputs. No other connections are required between the DVD player and receiver.

If you're connecting to a different audio/video receiver that does not process audio through HDMI, connect the DVD player's HDMI output to one of the receiver's HDMI inputs (for video only), and connect the DVD player's Coaxial Digital Audio Output to one of the receiver's coaxial audio inputs. Refer to the receiver's owner's manual for instructions about setting up its audio and video inputs.

## Digital Audio Connections

### Audio output from the DVD player's coaxial digital audio output connector

Disc	Sound recording format	Coaxial digital audio output
DVD	Dolby Digital	Dolby Digital bitstream (2-5.1ch) or PCM (2ch, 48kHz, 16-bit)
	Linear PCM (48/96kHz, 16/20/24-bit)	Linear PCM (2ch) (48/96kHz, 16/20/24-bit)
	DTS	Bitstream or no output*
	MPEG (2.0)	MPEG bitstream (2ch) or linear PCM (2ch, 48kHz)
CD	Linear PCM	Linear PCM (44.1kHz sampling)
	MP3 MPEG-1 Audio Layer 3)	Linear PCM (44.1–48kHz, depending on source, if digital output format selected as "Bitstream"). (48kHz if digital output format selected as "PCM")

\* Digital Format must be selected as "ORIGINAL" or "PCM" respectively in Menu

### For your reference:

- Dolby Digital is a digital audio compression technique developed by the Dolby Laboratories Licensing Corporation, supporting 5.1-channel surround sound, as well as stereo (2-channel) sound, this technique enables a large quantity of sound data to be efficiently recorded on a disc.
- Linear PCM is a signal recording format used in CDs. While CDs are recorded in 44.1kHz/16 bit, DVDs are recorded in 48kHz/16 bit up to 96kHz/24 bit.
- The DVD player is designed to digitally output 96kHz-PCM audio with a 96kHz sampling rate. However, some 96kHz DVD's may include copy protection codes that do not permit digital output. In this case, use the "Down Sample" setup menu to switch the sampling rate to 48kHz.

### Caution for the coaxial digital audio outputs:

- When connecting an amplifier (with coaxial digital input) which does not contain a Dolby Digital or DTS decoder, be sure to select "PCM" as initial setting in the "Digital Out" setup menu. Otherwise, any attempt to play a DVD may cause such a high level of noise that it may be harmful to your ears and damage your speakers.
- CD's can be played as they would normally be played.

### Note:

- Some first generation DTS decoders which do not support DVD-DTS interface may not work properly with the DVD player.
- Dolby Digital, DTS and PCM signals are passed through the **HDMI Output 1** but are not processed in the AVR Receiver in your AVR/DVD system. Connect the Coaxial Digital Audio Output separately in addition to the HDMI connection to get sound from your system Receiver.

### Dolby Digital and DTS

Both Dolby Digital and DTS are audio formats used to record 5.1-channel audio signals onto a film's digital soundtrack. Both of these formats provide six separate channels: left, right, center, left rear, right rear, and common subwoofer.

Remember, that Dolby Digital or DTS will only play 5.1-channel sound if you've connected the coaxial output of the DVD player to a DTS or Dolby Digital receiver or decoder and if the disc was recorded in the Dolby Digital or DTS format.

## Troubleshooting Guide

SYMPTOM	CAUSE	SOLUTION
Unit does not turn on	<ul style="list-style-type: none"> <li>No AC Power</li> </ul>	<ul style="list-style-type: none"> <li>Check AC power plug and make certain any switched outlet is turned on.</li> </ul>
Disc does not play	<ul style="list-style-type: none"> <li>Disc loaded improperly</li> <li>Incorrect disc type</li> <li>Invalid Region Code</li> <li>Rating is above parental preset</li> </ul>	<ul style="list-style-type: none"> <li>Load disc label-side up; align the disc with the guides and place it in its proper position.</li> <li>Check to see that disc is CD, CD-R, CD-RW, MP3, JPEG, DVD-R, DVD-RW, DVD+R, DVD+RW (standard conforming), or DVD-Video; other types will not play.</li> <li>Use Region 2 or Open Region (0) disc only.</li> <li>Enter password to override or change rating settings.</li> </ul>
No picture	<ul style="list-style-type: none"> <li>Intermittent connections</li> <li>Wrong input</li> <li><b>HDMI Output 11</b> is connected to a video display that is not HDCP-compliant.</li> </ul>	<ul style="list-style-type: none"> <li>Check all video connections.</li> <li>Check input selection of TV or receiver.</li> <li>The <b>HDMI Output 11</b> may not be used with video displays that are not HDCP-compliant. Unplug the cable and select another audio and video connection (see page 30).</li> </ul>
No sound	<ul style="list-style-type: none"> <li>Intermittent connections</li> <li>Incorrect digital audio selection</li> <li>DVD disc is in fast or slow mode</li> </ul>	<ul style="list-style-type: none"> <li>Check all audio connections.</li> <li>Check digital audio settings.</li> <li>There is no audio playback on DVD discs during fast or slow modes.</li> </ul>
Picture is distorted or jumps during fast forward or reverse play	<ul style="list-style-type: none"> <li>MPEG-2 decoding</li> </ul>	<ul style="list-style-type: none"> <li>It is a normal artifact of DVD playback for pictures to jump or show some distortion during rapid play.</li> </ul>
Some remote buttons do not operate during DVD play; " <b>PROHIBITED</b> " symbol appears (see below)	<ul style="list-style-type: none"> <li>Function not permitted at this time</li> </ul>	<ul style="list-style-type: none"> <li>With most discs, some functions are not permitted at certain times (e.g., Track Skip) or at all (e.g., direct audio track selection).</li> </ul>
The OSD menu is in a foreign language	<ul style="list-style-type: none"> <li>Incorrect OSD language</li> </ul>	<ul style="list-style-type: none"> <li>Change the display language selection.</li> </ul>
" <b>PROHIBITED</b> " appears	<ul style="list-style-type: none"> <li>Requested function not available at this time</li> </ul>	<ul style="list-style-type: none"> <li>Certain functions may be disabled by the DVD itself during passages of a disc.</li> </ul>
Picture is displayed in the wrong aspect ratio	<ul style="list-style-type: none"> <li>Incorrect match of aspect ratio settings to disc</li> </ul>	<ul style="list-style-type: none"> <li>Change aspect ratio settings.</li> </ul>
Remote control inoperative	<ul style="list-style-type: none"> <li>Weak batteries</li> <li>Sensor is blocked</li> </ul>	<ul style="list-style-type: none"> <li>Change all batteries.</li> <li>Clear path to sensor or use optional outboard remote sensor.</li> </ul>
Disc will not copy to VCR	<ul style="list-style-type: none"> <li>Copy protection</li> </ul>	<ul style="list-style-type: none"> <li>Many DVDs are encoded with copy protection to prevent copying to VCR.</li> </ul>
Password not accepted.	<ul style="list-style-type: none"> <li>Incorrect password being used or password has been forgotten.</li> </ul>	<ul style="list-style-type: none"> <li>Stop play of disc. Press and hold the <b>Clear Button 14</b> until the display blinks. This resets the password and all settings to their defaults.</li> </ul>



## Technical Specifications for DVD Player

Applicable Disc:	Disc formats: 5 inch (12 cm) or 3 inch (8 cm) DVD Video, Standard conforming DVD+RW, DVD+R, DVD-R, DVD-RW, DivX, CD, CD-R, MP3, JPEG or CD-RW discs, Regio code: DVD Movie disc with Code 2 or 0 only. DVD-Layers: Single Side/Single Layer, Single Side/Dual Layer, Dual Side/Single Layer, Dual Side/Dual Layer Audio formats: Linear PCM, MPEG, Dolby Digital or DTS Audio discs. Still-image format: JPEG
Video Signal System:	PAL/NTSC
HDMI™ Output:	Video: 576p, 720p, 1080i, 1080p HDMI Version 1.3-compliant
Wow & Flutter:	Below Measurable Limits
AC Power:	100 - 240V/50 ~ 60Hz
Power Consumption:	1 Watt (Standby)/13 Watts (Max)
Dimensions (WxHxD):	440mm x 206mm x 49mm
Weight:	1.65 kg

Depth measurement includes knobs and connectors.  
Height measurement includes feet and chassis.  
Features, specifications and appearance are subject to change without notice.



Harman Consumer, Inc.  
8500 Baloba Blvd., Northridge, CA 91329 USA  
© 2010 Harman International Industries, Incorporated. All rights reserved.

Harman Kardon is a registered trademark of Harman International Industries, Incorporated, registered in the United States and/or other countries.  
Manufactured under license from Dolby Laboratories. Dolby, Pro Logic and the double-D symbol are registered trademarks of Dolby Laboratories.  
Manufactured under license under U.S. Patent # 5,451,942 & other U.S. and worldwide patents issued & pending. DTS and DTS-ES are registered trademarks and DTS Advanced Digital Out and the DTS logo are trademarks of DTS, Inc.  
Blu-Ray Disc is a trademark of the Blu-Ray Disc Association.  
HDMI, the HDMI logo and High-Definition Multimedia Interface are trademarks or registered trademarks of HDMI Licensing LLC.  
This product incorporates copyright protection technology that is protected by U.S. patents and other intellectual property rights. Use of this copyright protection technology must be authorized by Rovi Corporation and is intended for home and other limited viewing uses only unless otherwise authorized by Rovi Corporation. Reverse engineering or disassembly is prohibited.

4-1

## Software check and upgrade

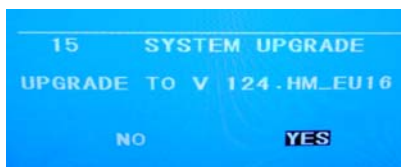
### Preparation to upgrade software

1. Start the CD burning software;
2. Then copy the Bin file ([HM\\_EU16bin](#)) into it;
3. Burn the data onto the blank CD.

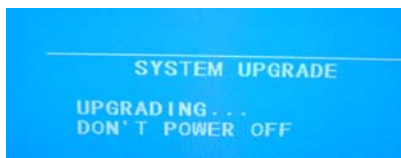
#### A. Procedure for software upgrade

##### -Upgrade software via Disc

1. Power on the set and insert the prepared Upgrade CDR.
2. The set will start reading and response with the following display on TV screen:



3. Press <YES> button to confirm, then screen will display as below, and the tray will automatically open, then take the upgrade CD out.



4. Please wait for a moment, the tray will close and set restarts automatically when upgrading completed.

#### B. Read out the software versions to confirm upgrading

1. Power on the set and open the tray door.
2. Press press <7><7><7><7> button on the reomote control.
3. Then need choose "VERSION" item, the version informations will display as following:

SC:135:   XXXXX

F/W ID:   XXXXX

CHIP ID:   XXXXX

ERGION:   X

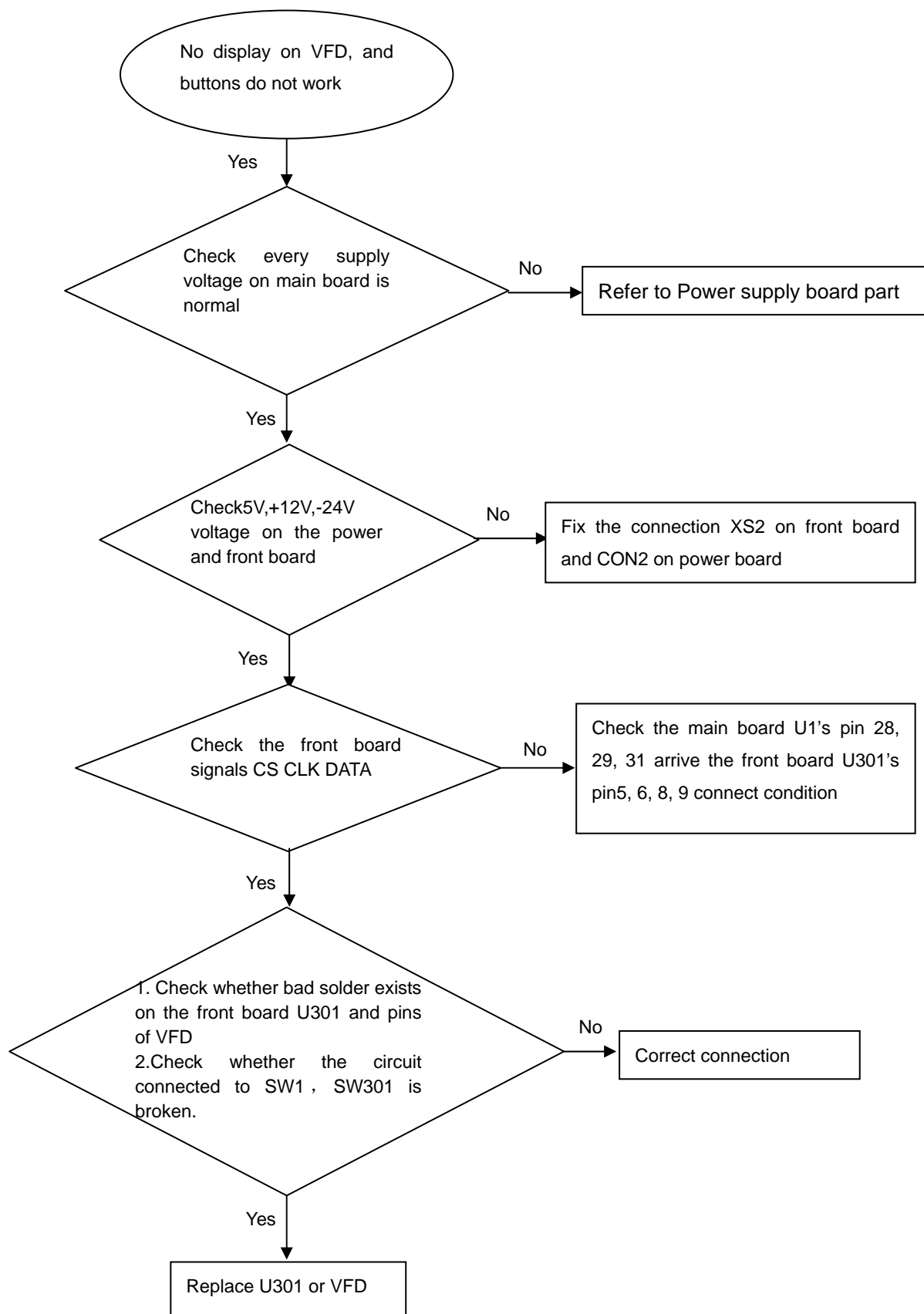
BIN FILE: HM\_EU16.BIN

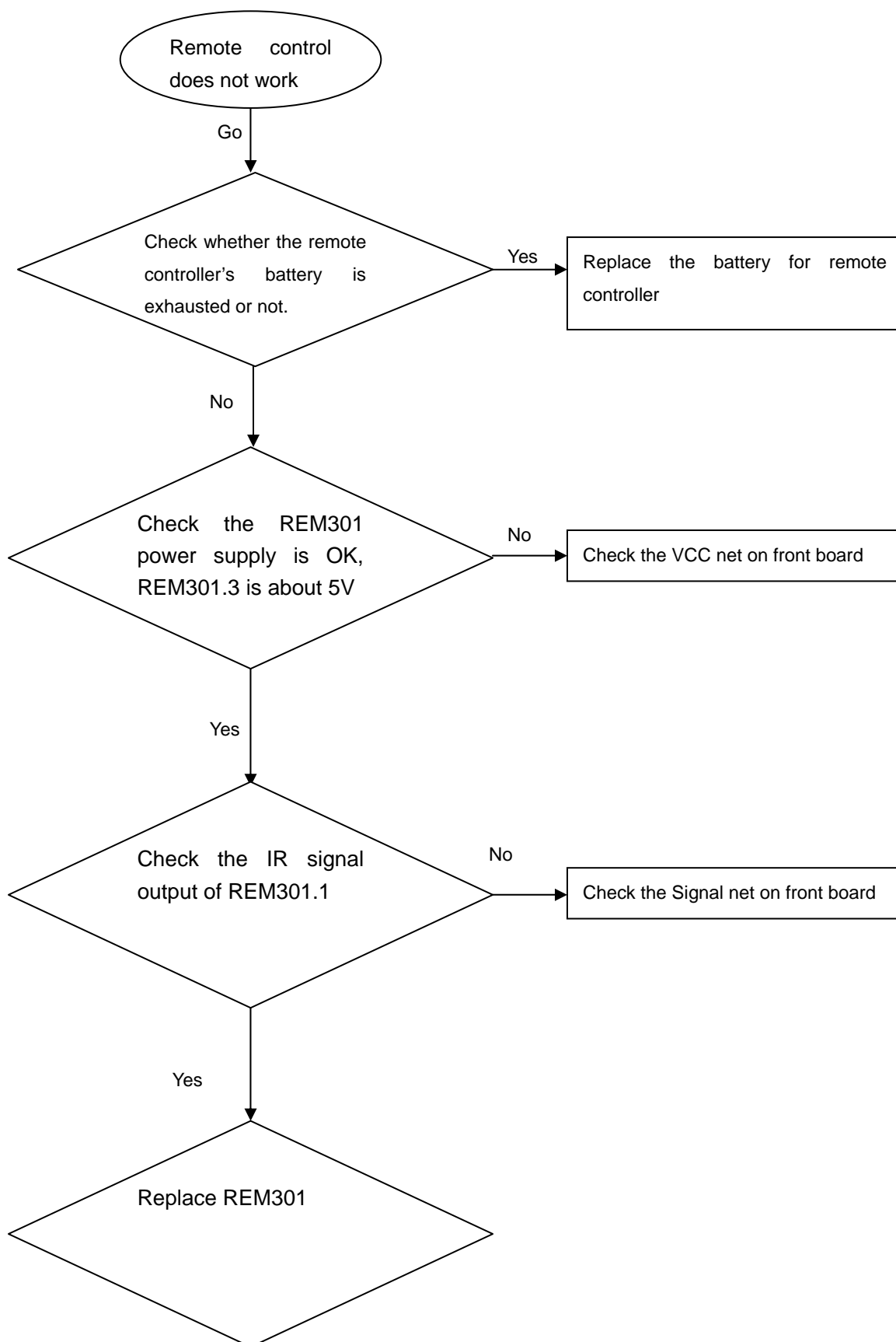
VERSION: HM\_EU16 VXX

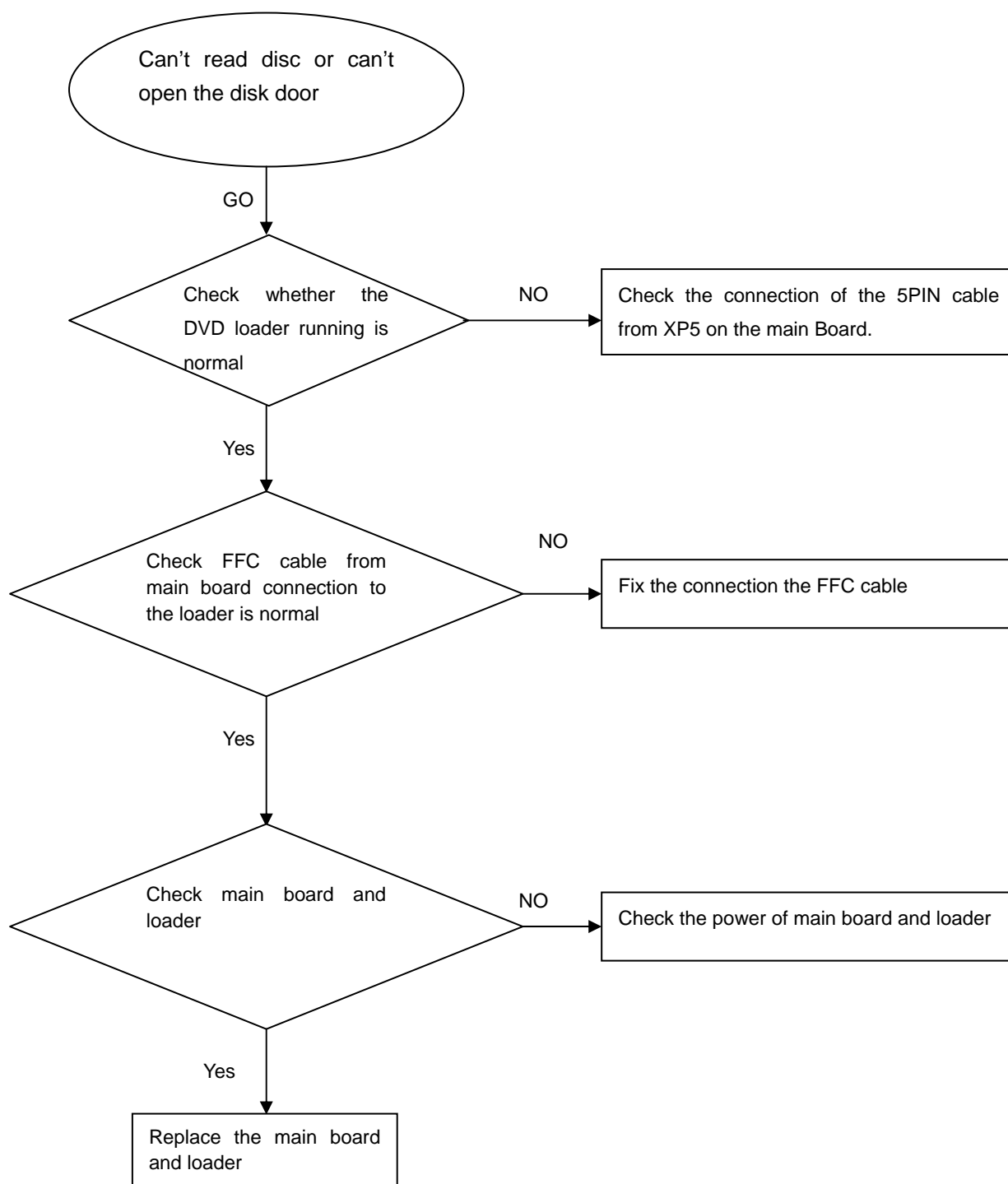
Caution: The set must not be power off during upgrading, otherwise the Main board will be damaged entirely.

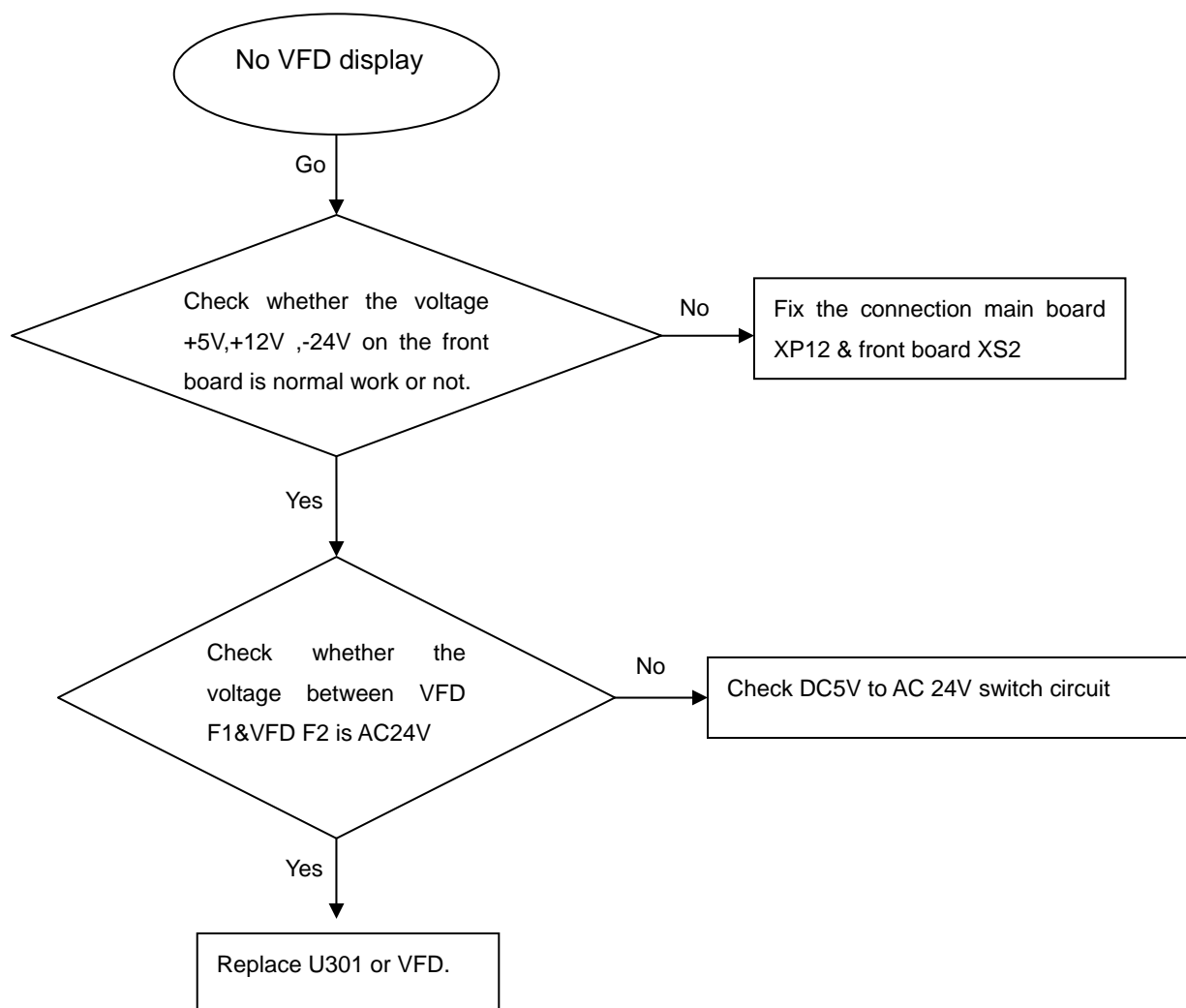
## 5-1

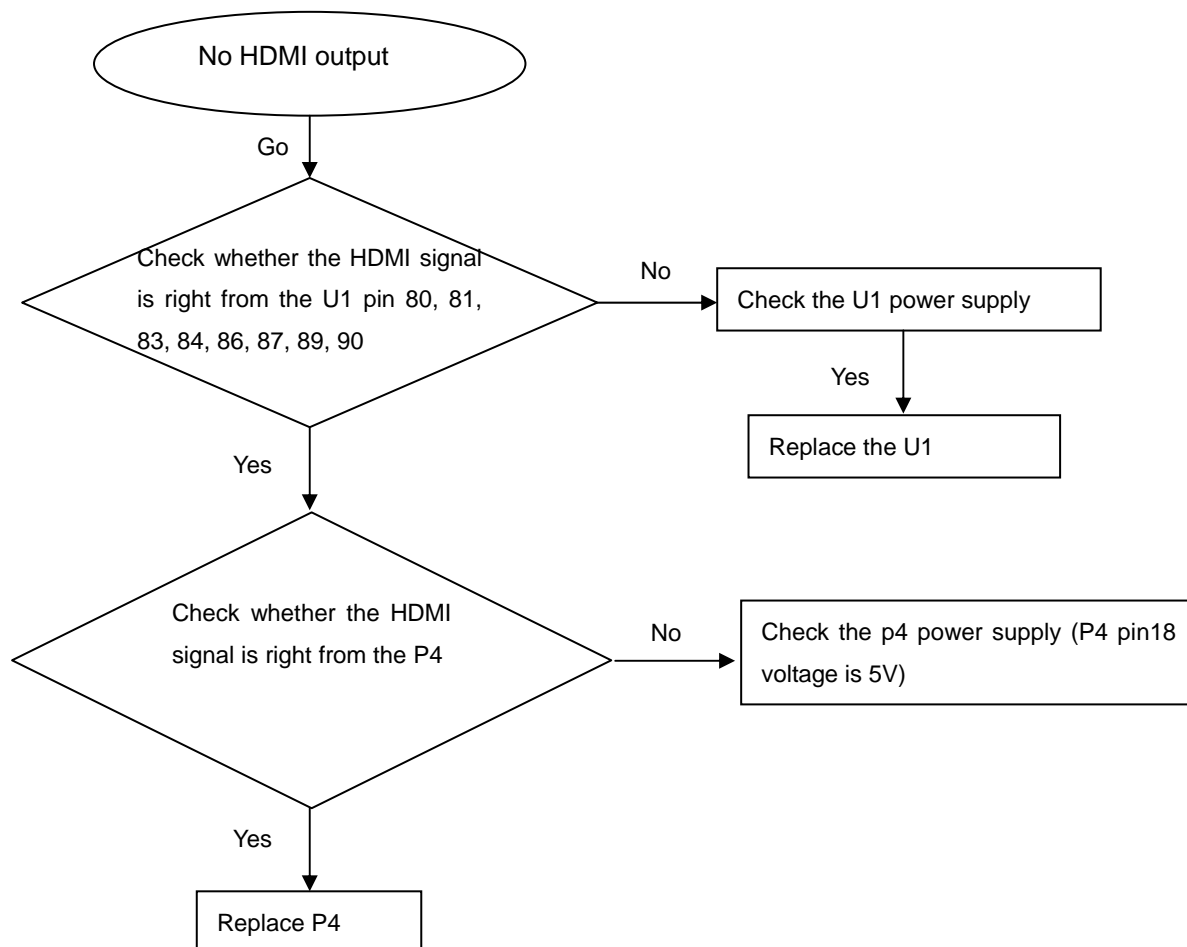
## Trouble shooting chart

**No display on VFD, and buttons do not work**

**Remote control does not work**

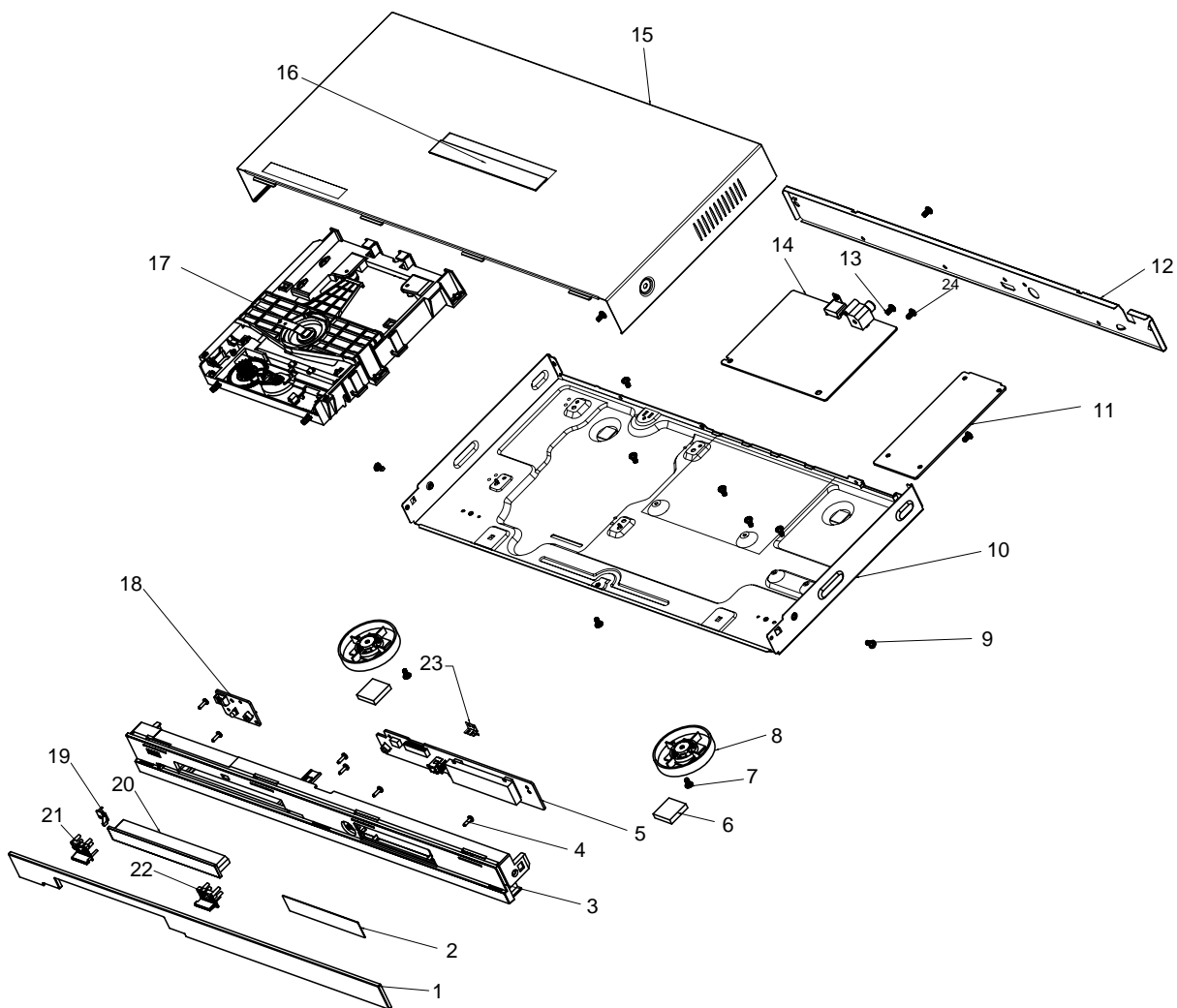
**Can't read disc or can't open the disk door**

**No VFD display**

**No HDMI signal output**

## 8-1

Exploded view for DVD16/DVD18:






It is exploded view for DVD16/DVD18, pls refer to the model set for detailed information.  
Assy1 includes componets:1.2.3.19.21.22




## 8-2

**DVD16 SERVICE PARTS**




 Location No.	TCL P/N.	Description	Q'ty
14	08-D03RXX-U2EX0	ASSY-MAIN BOARD	1
5	08-DVD016-FEY	ASSY-FRONT CONTROL BOARD	1
 11	08-DVD016-PWY	ASSY-POWER BOARD	1
18	08-DVD016-SWY	ASSY-SWITCH BOARD	1
17	08-L31808-S313D	ASSY-LOADER	1
OPU	05-000CMS-SRFS3	OPU IM S76RFS3	1
ASSY1	08-DV16F1-XX0B1	ASSY-FRONT PANEL	1
FLOGO	67-995950-0A0	FRONT PANEL LOGO	1
LLOGO	67-995960-0A0	LENS DVD LOGO	1
TLOGO	08-995990-XX0	TOP COVER LOGO	1
XP5	46-FH015T-05I	CABLE 5PIN 150MM FH-JC20	1
XP3	46-40270C-24X	FFC 180MM 24PIN	1
XP4	46-40279T-06P	CABLE 6PIN UL20080#28*4 L=80MM	1
20	55-DV16D1-0HMB1	CD DOOR	1
 PCORD	51-DC0150-0FAA4	POWER CORD	1
8	56-996030-0HA	FOOT INDIVIDUAL (L=R)	2
10	67-VD16R1-0E0	BOTTOM PLATE	1
12	67-VD16B1-0E0B1	BACK PANEL	1
6	54-990190-000	PAD FOR TOP FOOT	2
15	67-VD16T1-0E0B1	TOP COVER	1
HDMI	46-HDI005-19G01	HDMI GILT CABLE L=0.5M	1
COAXIAL	41-UH0520-3KK1	COAXIAL CABLE L=0.52M	1

**SAFETY PRECAUTION**


The parts identified by  mark are critical for safety. Replace only with part number specified. The mounting position of replacement is to be identical with originals.  
The substitute replacement parts which do not have the same safety characteristics as specified in the parts list may create shock, fire or other hazards.

## 8-2

**DVD18 SERVICE PARTS**

	Location No.	TCL P/N.	Description	Q'ty
	14	08-D03RXX-U2EX0	ASSY-MAIN BOARD	1
	5	08-DVD016-FEY	ASSY-FRONT CONTROL BOARD	1
	11	08-DVD016-PWY	ASSY-POWER BOARD	1
	18	08-DVD016-SWY	ASSY-SWITCH BOARD	1
	17	08-L31808-S313D	ASSY-LOADER	1
	OPU	05-000CMS-SRFS3	OPU IM S76RFS3	1
	ASSY1	08-DV16F1-XX0B2	ASSY-FRONT PANEL	1
	FLOGO	67-995950-0A0-M	FRONT PANEL LOGO	1
	LLOGO	67-996040-0A0-M	LENS DVD LOGO	1
	TLOGO	08-995990-XX0	TOP COVER LOGO	1
	XP5	46-FH015T-05I	CABLE 5PIN 150MM FH-JC20	1
	XP3	46-40270C-24X	FFC 180MM 24PIN	1
	XP4	46-40279T-06P	CABLE 6PIN UL20080#28*4 L=80MM	1
	20	55-DV16D1-0HMB1-M	CD DOOR	1
	PCORD	51-DC0150-0FAA4-M	POWER CORD	1
	8	56-996030-0HA-M	FOOT INDIVIDUAL (L=R)	2
	10	67-VD16R1-0E0-M	BOTTOM PLATE	1
	12	67-VD16B1-0E0B2-M	BACK PANEL	1
	6	54-990190-000	PAD FOR TOP FOOT	2
	15	67-VD16T1-0E0B1-M	TOP COVER	1
	HDMI	46-HDI005-19G01	HDMI GILT CABLE L=0.5M	1
	COAXIAL	41-UH0520-3KK1	COAXIAL CABLE L=0.52M	1

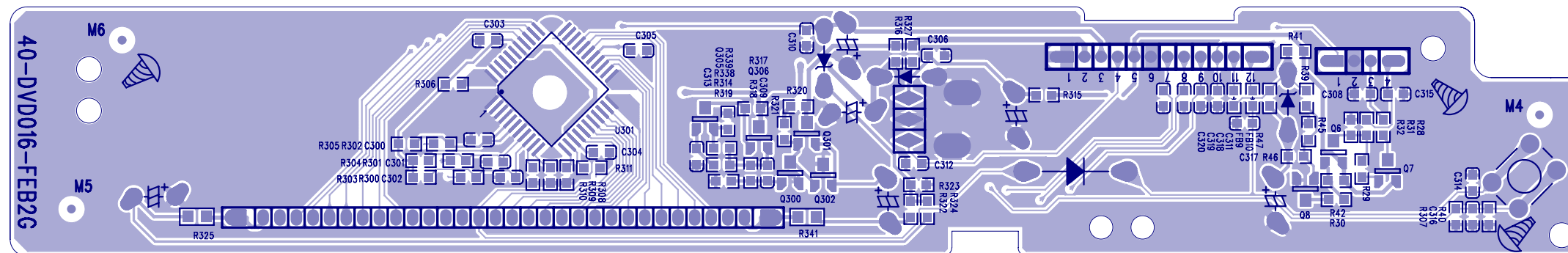
**SAFETY PRECAUTION**

The parts identified by  mark are critical for safety. Replace only with part number specified. The mounting position of replacement is to be identical with originals. The substitute replacement parts which do not have the same safety characteristics as specified in the parts list may create shock, fire or other hazards.

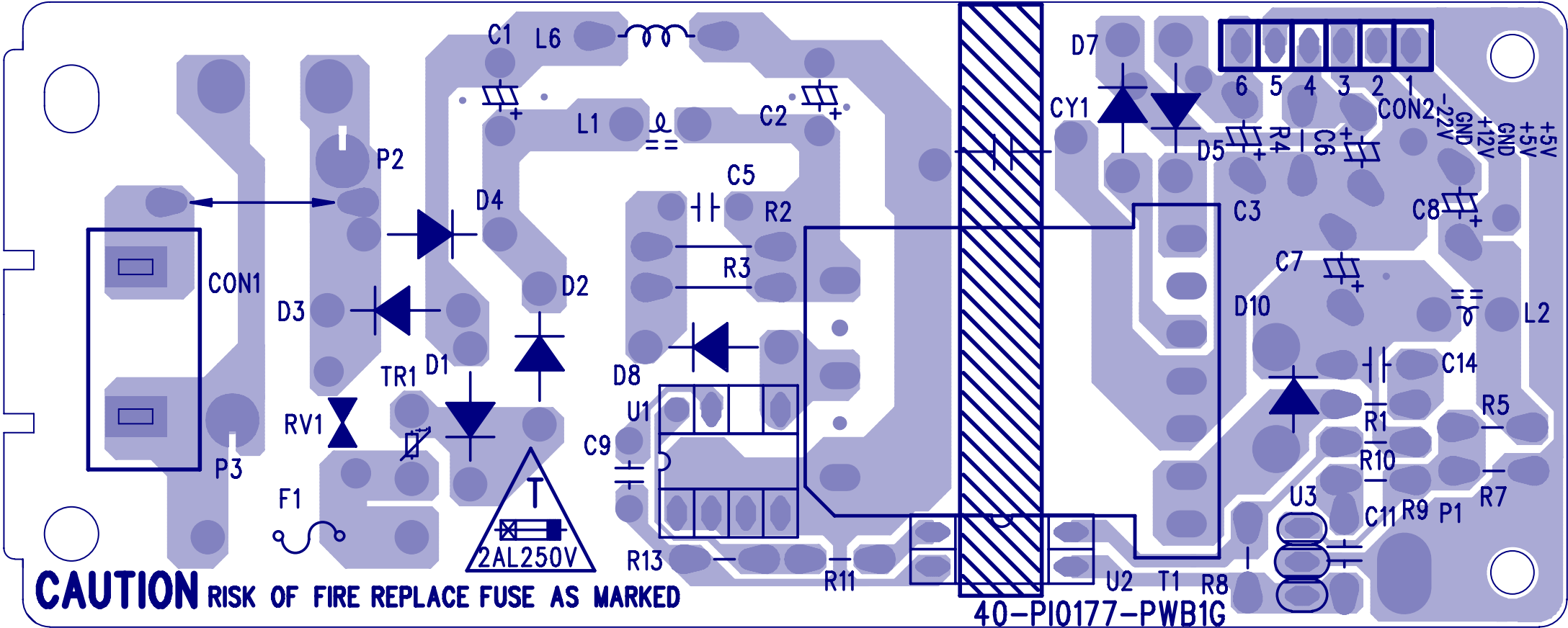
7-9

The diagram illustrates the internal layout of the 40-DVD016-1FEBZG VFD. Key components and their locations are labeled:

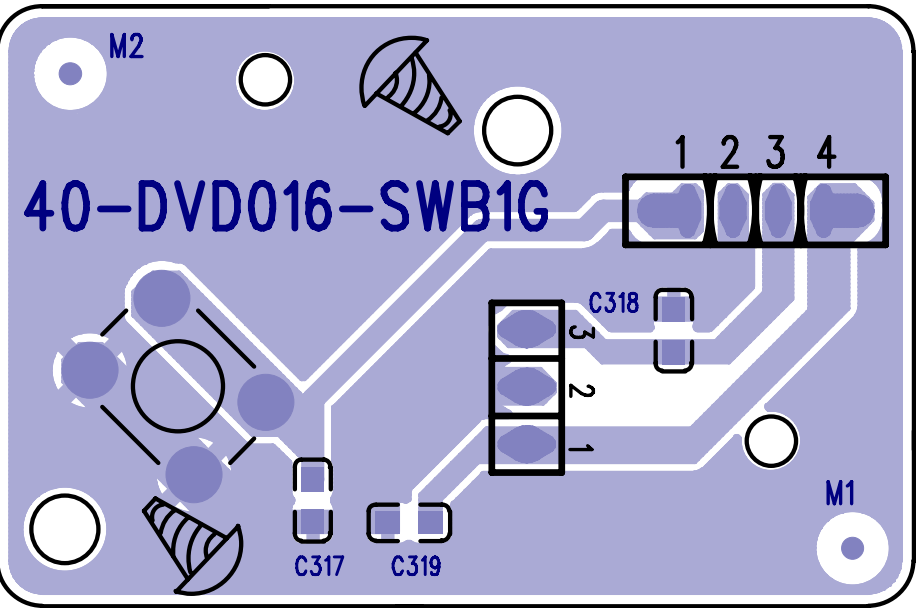
- CE300**: Main VFD module.
- CE301**: 24VDC power supply module.
- CE302**: 24VDC power supply module.
- CE304**: 24VDC power supply module.
- REM301**: Remote control module.
- D301**: Diode module.
- XS2**: 12-pin connector for 24VDC power supply.
- XP1**: 4-pin connector for 24VDC power supply.
- CE6**: 24VDC power supply module.
- SW1**: Switch.
- SW2**: Switch.
- SW3**: Switch.
- SW4**: Switch.
- SW5**: Switch.
- SW6**: Switch.
- SW7**: Switch.
- SW8**: Switch.
- SW9**: Switch.
- SW10**: Switch.
- SW11**: Switch.
- SW12**: Switch.
- SW13**: Switch.
- SW14**: Switch.
- SW15**: Switch.
- SW16**: Switch.
- SW17**: Switch.
- SW18**: Switch.
- SW19**: Switch.
- SW20**: Switch.
- SW21**: Switch.
- SW22**: Switch.
- SW23**: Switch.
- SW24**: Switch.
- SW25**: Switch.
- SW26**: Switch.
- SW27**: Switch.
- SW28**: Switch.
- SW29**: Switch.
- SW30**: Switch.
- SW31**: Switch.
- SW32**: Switch.
- SW33**: Switch.
- SW34**: Switch.
- SW35**: Switch.
- SW36**: Switch.
- SW37**: Switch.
- SW38**: Switch.
- SW39**: Switch.
- SW40**: Switch.
- SW41**: Switch.
- SW42**: Switch.
- SW43**: Switch.
- SW44**: Switch.
- SW45**: Switch.
- SW46**: Switch.
- SW47**: Switch.
- SW48**: Switch.
- SW49**: Switch.
- SW50**: Switch.
- SW51**: Switch.
- SW52**: Switch.
- SW53**: Switch.
- SW54**: Switch.
- SW55**: Switch.
- SW56**: Switch.
- SW57**: Switch.
- SW58**: Switch.
- SW59**: Switch.
- SW60**: Switch.
- SW61**: Switch.
- SW62**: Switch.
- SW63**: Switch.
- SW64**: Switch.
- SW65**: Switch.
- SW66**: Switch.
- SW67**: Switch.
- SW68**: Switch.
- SW69**: Switch.
- SW70**: Switch.
- SW71**: Switch.
- SW72**: Switch.
- SW73**: Switch.
- SW74**: Switch.
- SW75**: Switch.
- SW76**: Switch.
- SW77**: Switch.
- SW78**: Switch.
- SW79**: Switch.
- SW80**: Switch.
- SW81**: Switch.
- SW82**: Switch.
- SW83**: Switch.
- SW84**: Switch.
- SW85**: Switch.
- SW86**: Switch.
- SW87**: Switch.
- SW88**: Switch.
- SW89**: Switch.
- SW90**: Switch.
- SW91**: Switch.
- SW92**: Switch.
- SW93**: Switch.
- SW94**: Switch.
- SW95**: Switch.
- SW96**: Switch.
- SW97**: Switch.
- SW98**: Switch.
- SW99**: Switch.
- SW100**: Switch.



Power Board Print-layout (Bottom side):



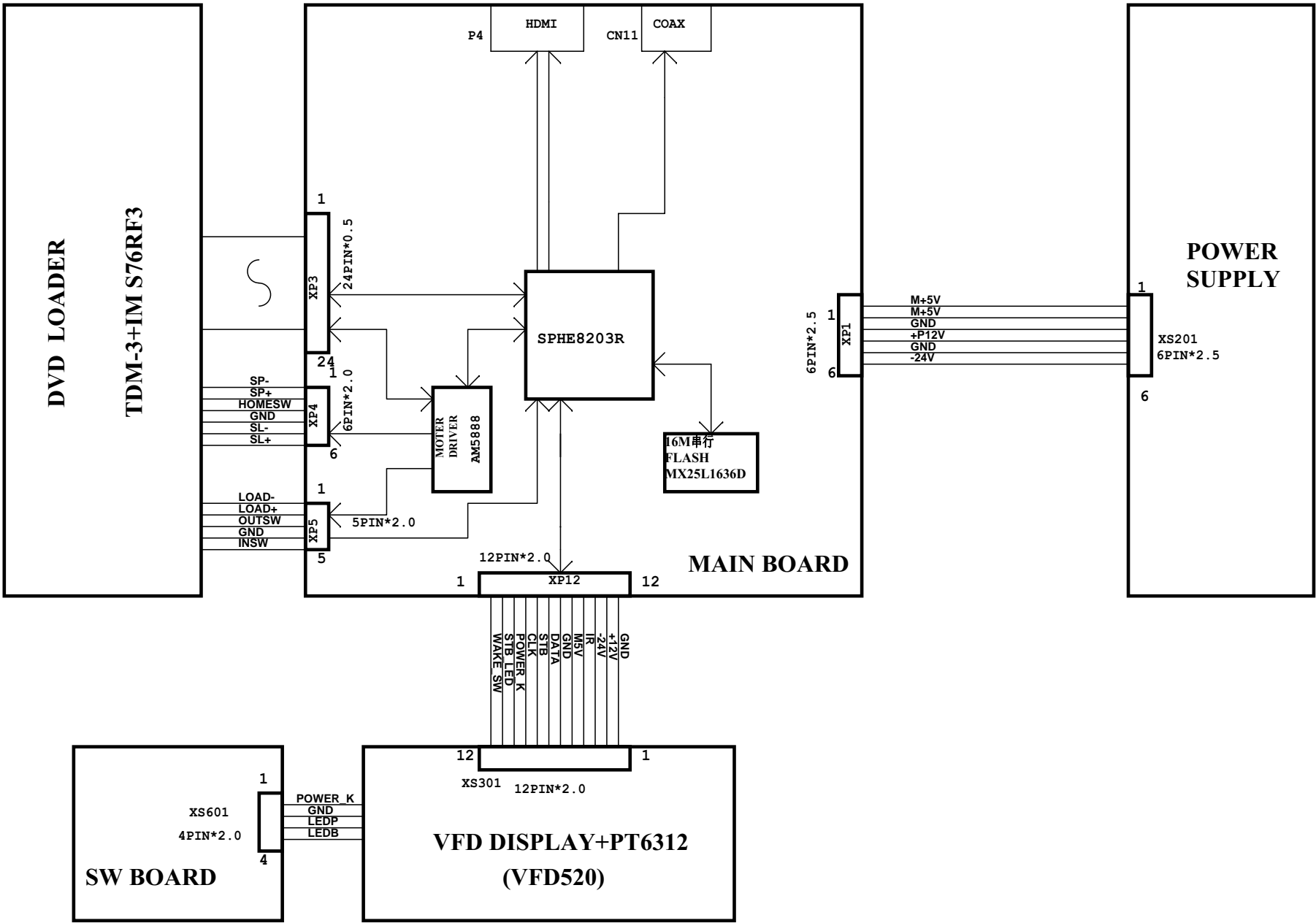
Switch Board Print-layout (Bottom side):



7-11

7-12

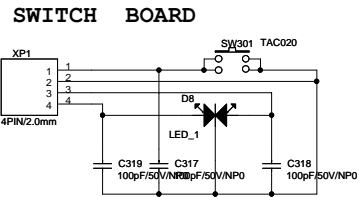
DVD16/DVD18 WIRING DIAGRAM



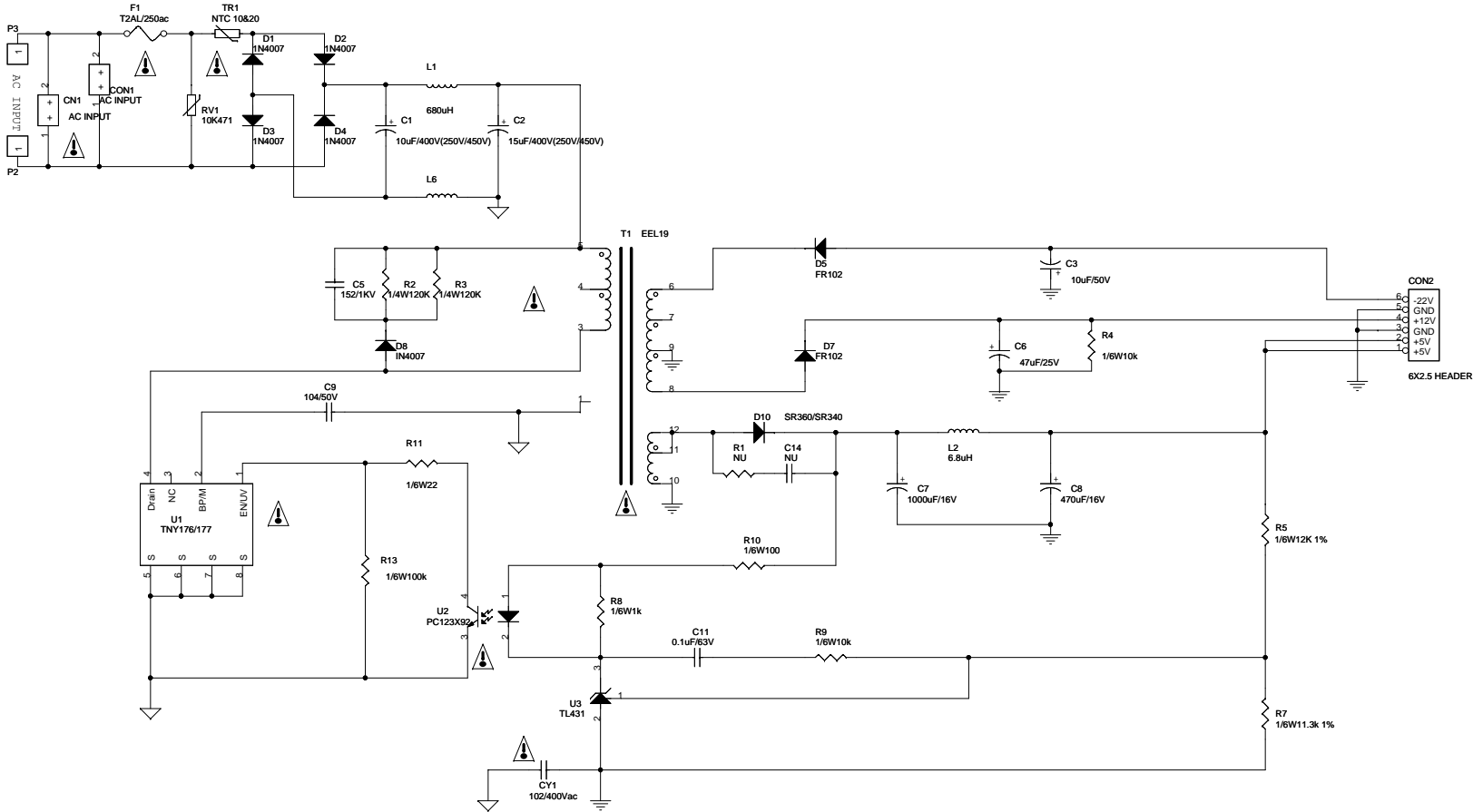





Switch Board Circuit Diagram:



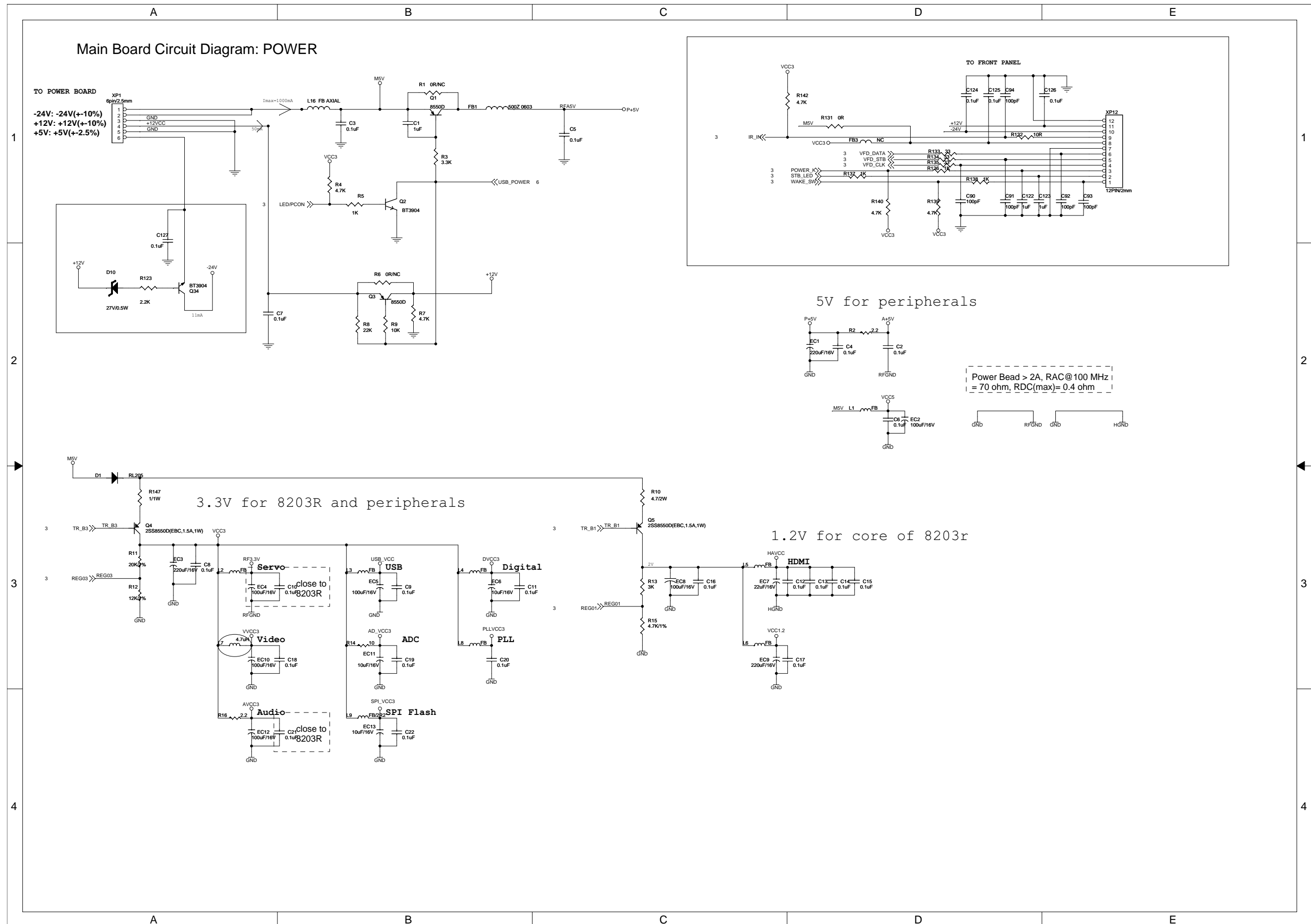
Power Board Circuit Diagram:



**\* CAUTION :**  
THE PARTS MARKED WITH  ARE IMPORTANT PARTS ON THE SAFETY.  
PLEASE USE THE PARTS HAVING THE DESIGNATED PARTS NUMBER WITHOUT FAIL.

7-4

7-4

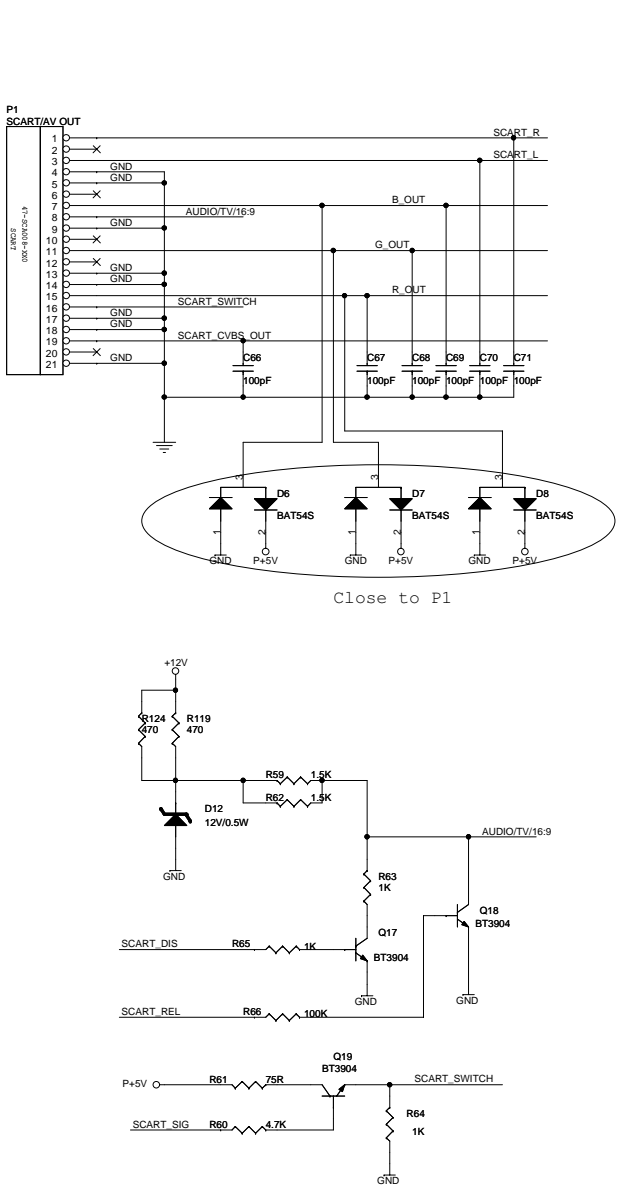


7-5

## Page 36 of 39

7-6

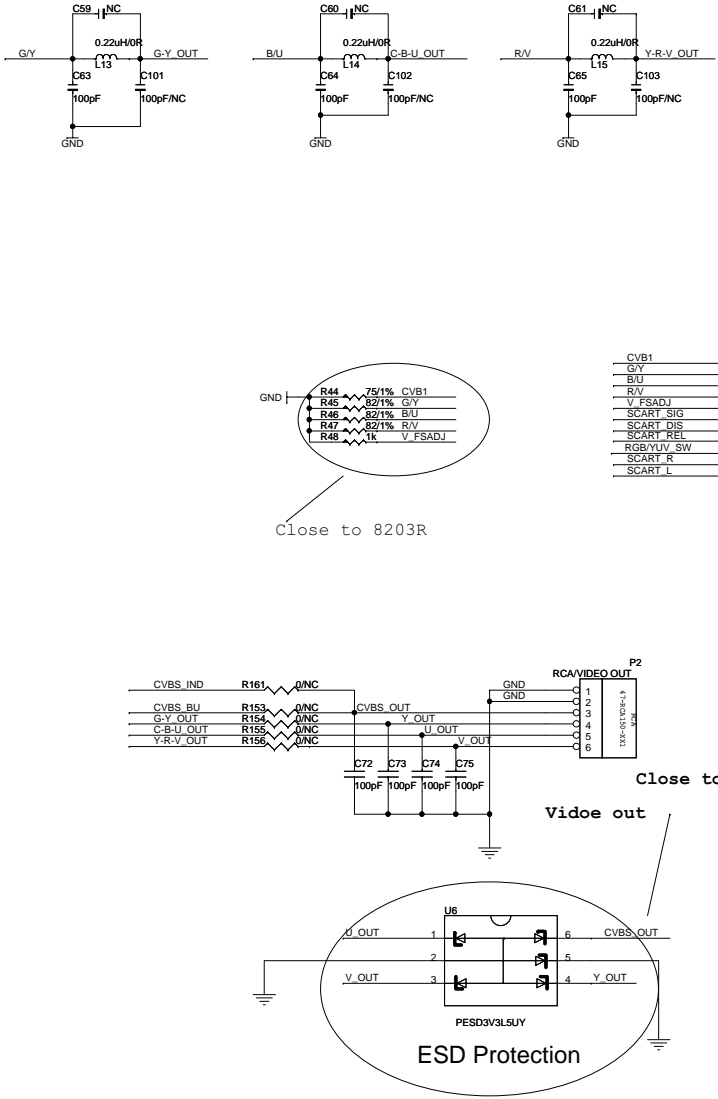
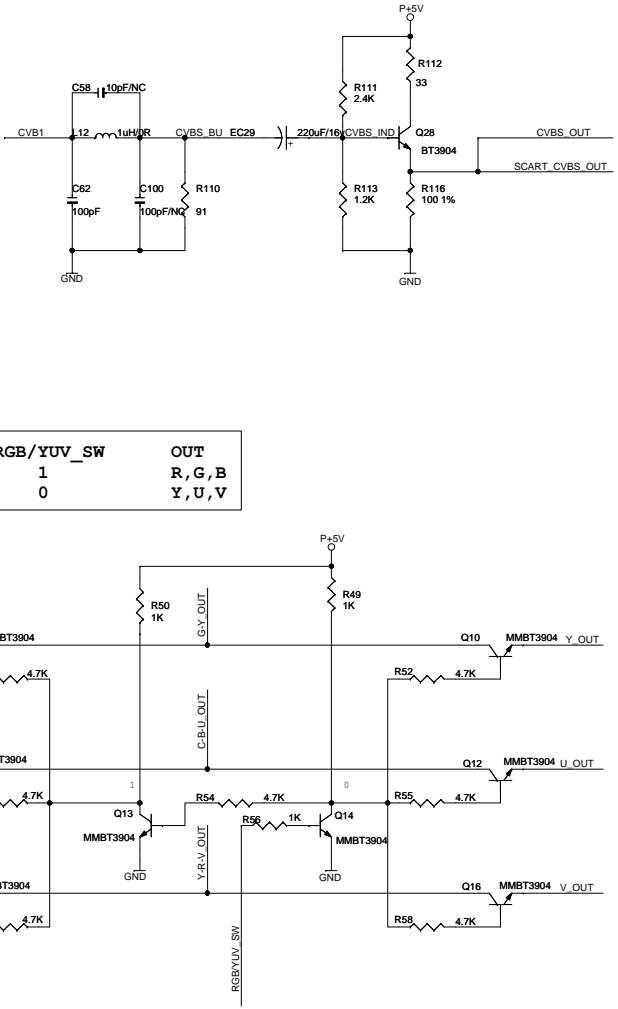
Main Board Circuit Diagram: VIDEO



RELEASE_SCART	DISPLAY_MODE
0	Not RELEASE
1	RELEASE

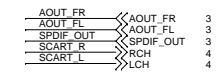
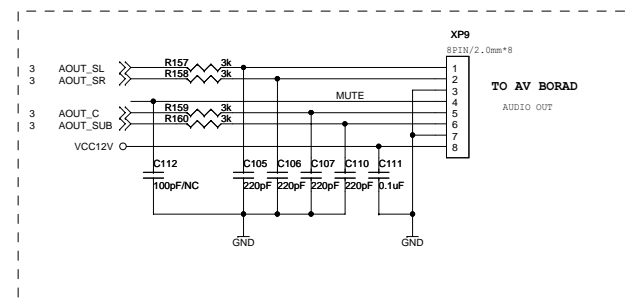
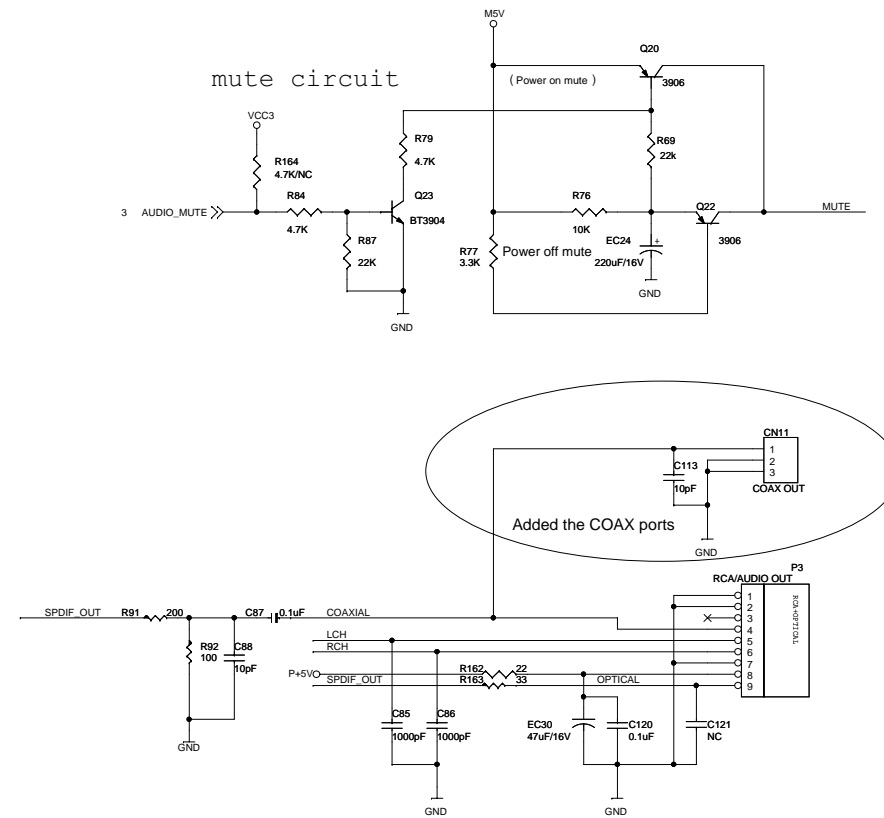
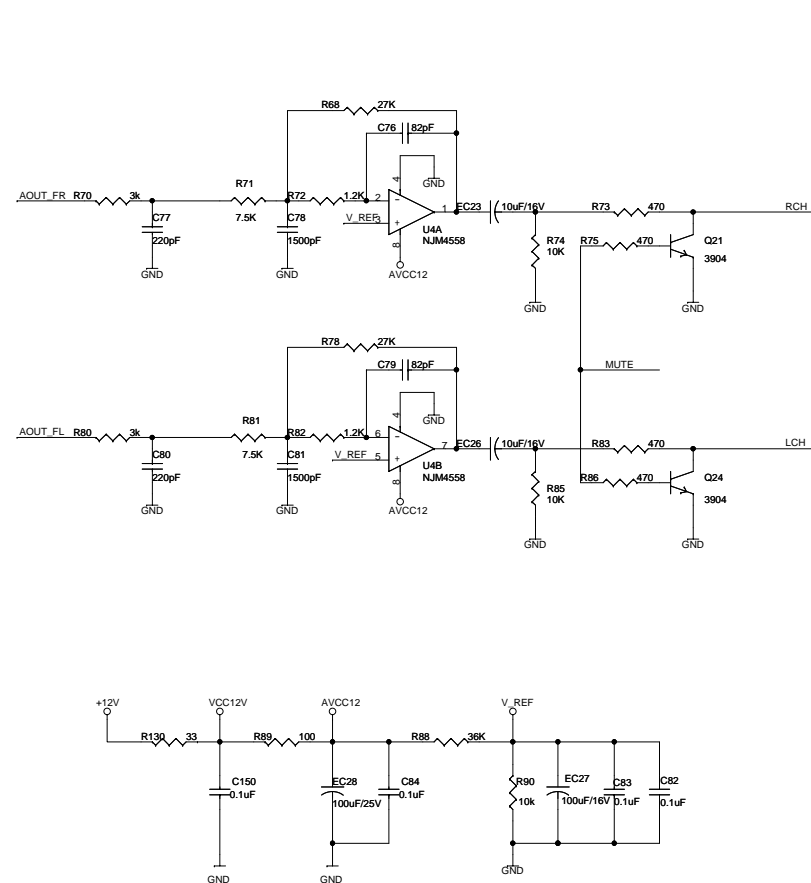
SCART_DISPLAY	DISPLAY_MODE
0	12V(9.5V--12V 4:3)
1	6V(5V--8V 16:9)

SCART_SIG	SIGNAL_MODE
0	0V(CVBS)
1	3V(RGB)



7-7

### Main Board Circuit Diagram: AUDIO



Main Board Circuit Diagram: HDMI&USB

