

SB 16/230

Active Soundbar with wireless subwoofer



CONTENTS

ESD WARNING	2	PARTS LIST, SUB	7
PACKAGE GUIDE AND PARTS, CENTER	3	SCHEMATIC DIAGRAMS	8
PACKAGE GUIDE AND PARTS, SUB	4	ASSEMBLY AND DISASSEMBLY, CENTER	12
EXPLODED VIEW AND PARTS, CENTER	5	OWNER'S MANUAL	16-29
EXPLODED VIEW AND PARTS, SUB	6		

ELECTROSTATICALLY SENSITIVE (ES) DEVICES

Some semiconductor (solid state) devices can be damaged easily by static electricity. Such components commonly are called Electrostatically Sensitive (ES) Devices. Examples of typical ES devices are integrated circuits and some field effect transistors and semiconductor "chip" components.

The following techniques should be used to help reduce the incidence of component damage caused by static electricity.



1. Immediately before handling any semiconductor component or semiconductor-equipped assembly, drain off any electrostatic charge on your body by touching a known earth ground. Alternatively, obtain and wear a commercially available discharging wrist strap device, which should be removed for potential shock reasons prior to applying power to the unit under test.
2. After removing an electrical assembly equipped with ES devices, place the assembly on a conductive surface such as aluminum foil, to prevent electrostatic charge build-up or exposure of the assembly.
3. Use only a grounded-tip soldering iron to solder or unsolder ES devices.
4. Use only an anti-static solder removal device. Some solder removal devices not classified as "anti-static" can generate electrical charges sufficient to damage ES devices.
5. Do not use freon-propelled chemicals. These can generate electrical change sufficient to damage ES devices.
6. Do not remove a replacement ES device from its protective package until immediately before you are ready to install it. (Most replacement ES devices are packaged with leads electrically shorted together by conductive foam, aluminum foil or comparable conductive material.)
7. Immediately before removing the protective material from the leads of a replacement ES device, touch the protective material to the chassis or circuit assembly into which the device will be installed.

CAUTION : Be sure no power is applied to the chassis or circuit, and observe all other safety precautions.

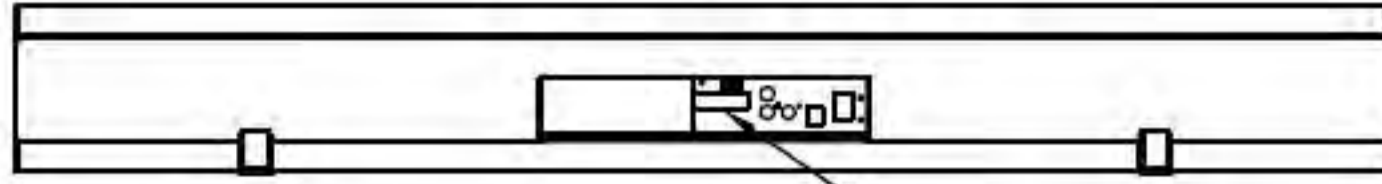
8. Minimize bodily motions when handling unpackaged replacement ES devices. (Otherwise harmless motion such as the brushing together of your clothes fabric or the lifting of your foot from a carpeted floor can generate static electricity sufficient to damage an ES devices.

PRODUCT SAFETY NOTICE

Each precaution in this manual should be followed during servicing.

Components identified with the IEC symbol  in the parts list are special significance to safety. When replacing a component identified with , use only the replacement parts designated, or parts with the same ratings or resistance, wattage, or voltage that are designated in the parts list in this manual. Leakage-current or resistance measurements must be made to determine that exposed parts are acceptably insulated from the supply circuit before returning the product to the customer.

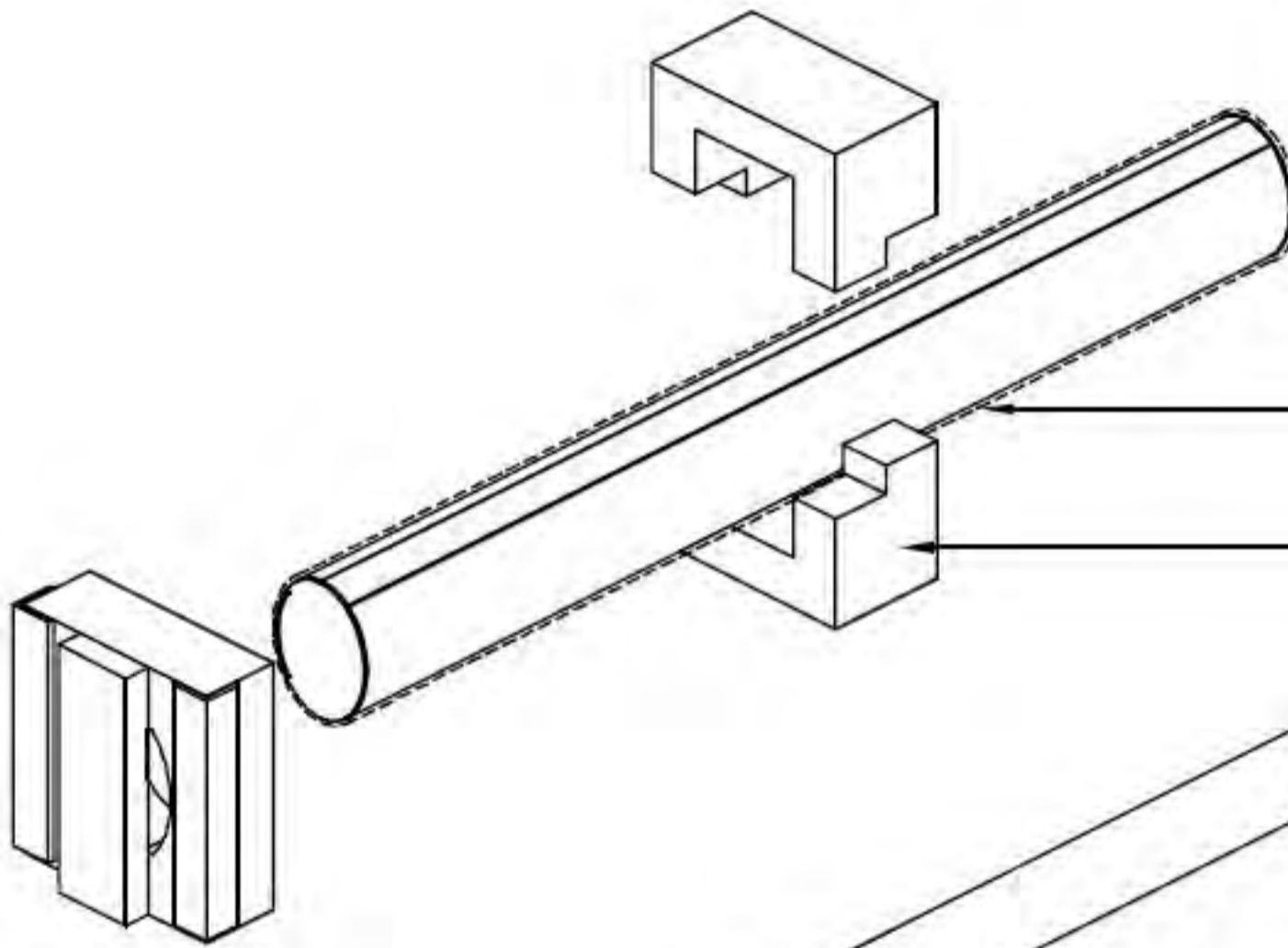
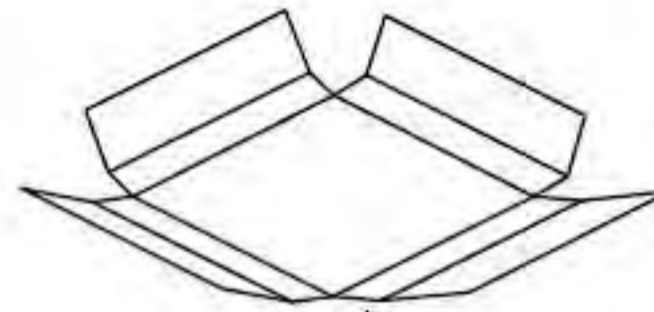
SOUNDBAR



Accessory Box 401-000-05310-E	151-E105303-E	power adaptor
	165-020001101-1E	RCA cable
	165-01500PP01-E	optical cable
	376-000-01249-0BAE	wall bracket
	376-000-01272-0BAE	wall bracket (longer)
	402-000-05310-E	Accessory Box
	435-000-05196-E	corner protector
	431-000-07021-E	EPE
	430-002-05391-E	Pearl Bag
	431-000-07026-E	EPE
	413-000-05591-E	static foil
	398-000-00304-E	dessicant
	402-000-06439-E	Beauty Box
	413-000-06384-E	Label of origin
411-000-08723-E	Serial Number label	

411-000-08723-E

- 151-E1105303-E*1
- 165-020001101-1E*1
- 165-01500PP01-E*1
- 376-000-01249-0BAE*1
- 376-000-01272-0BAE*1



401-000-05310-E

435-000-05196-E

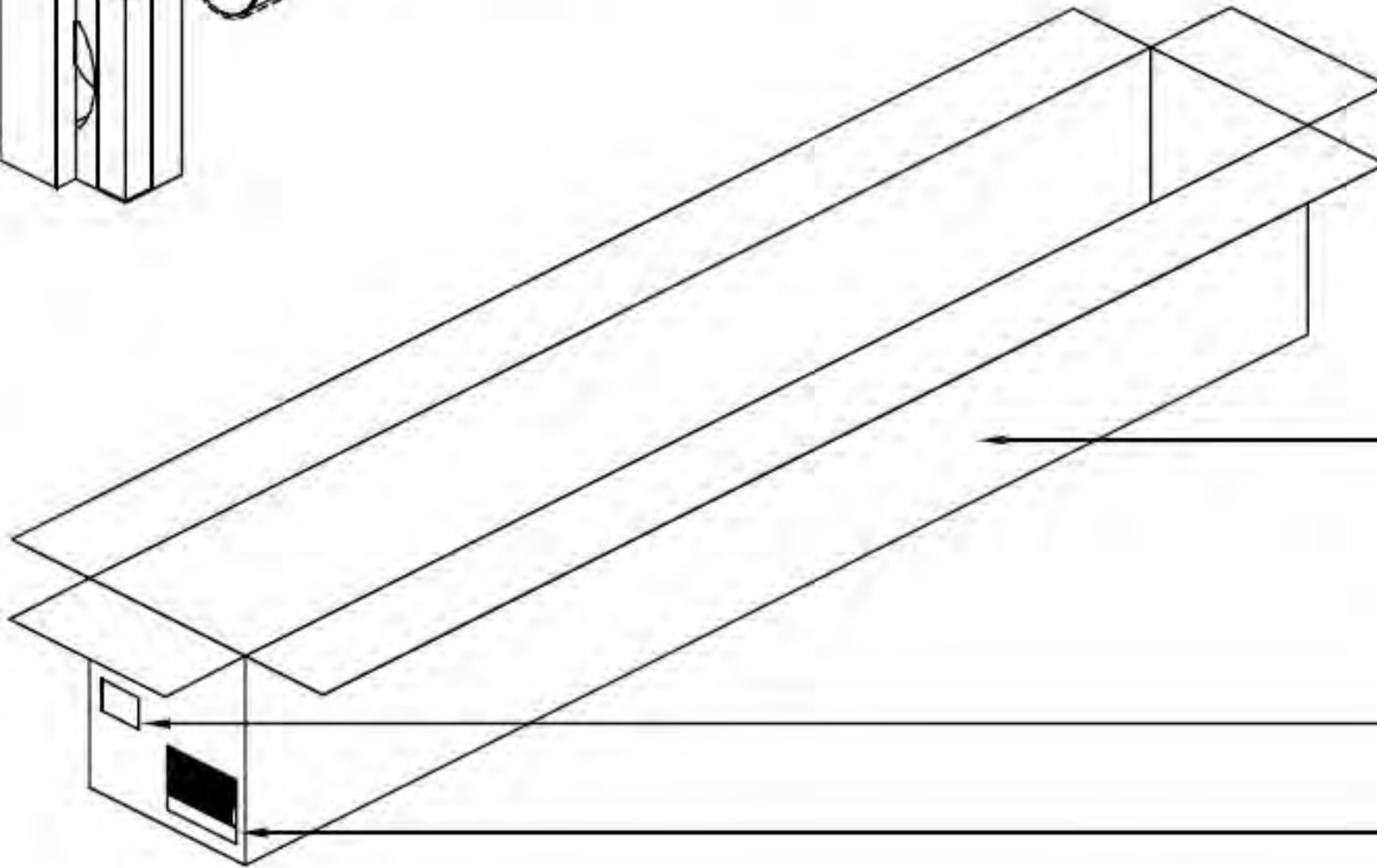
431-000-07021-E

430-002-05391-E

431-000-07026-E

413-000-05591-E

398-000-00304-E

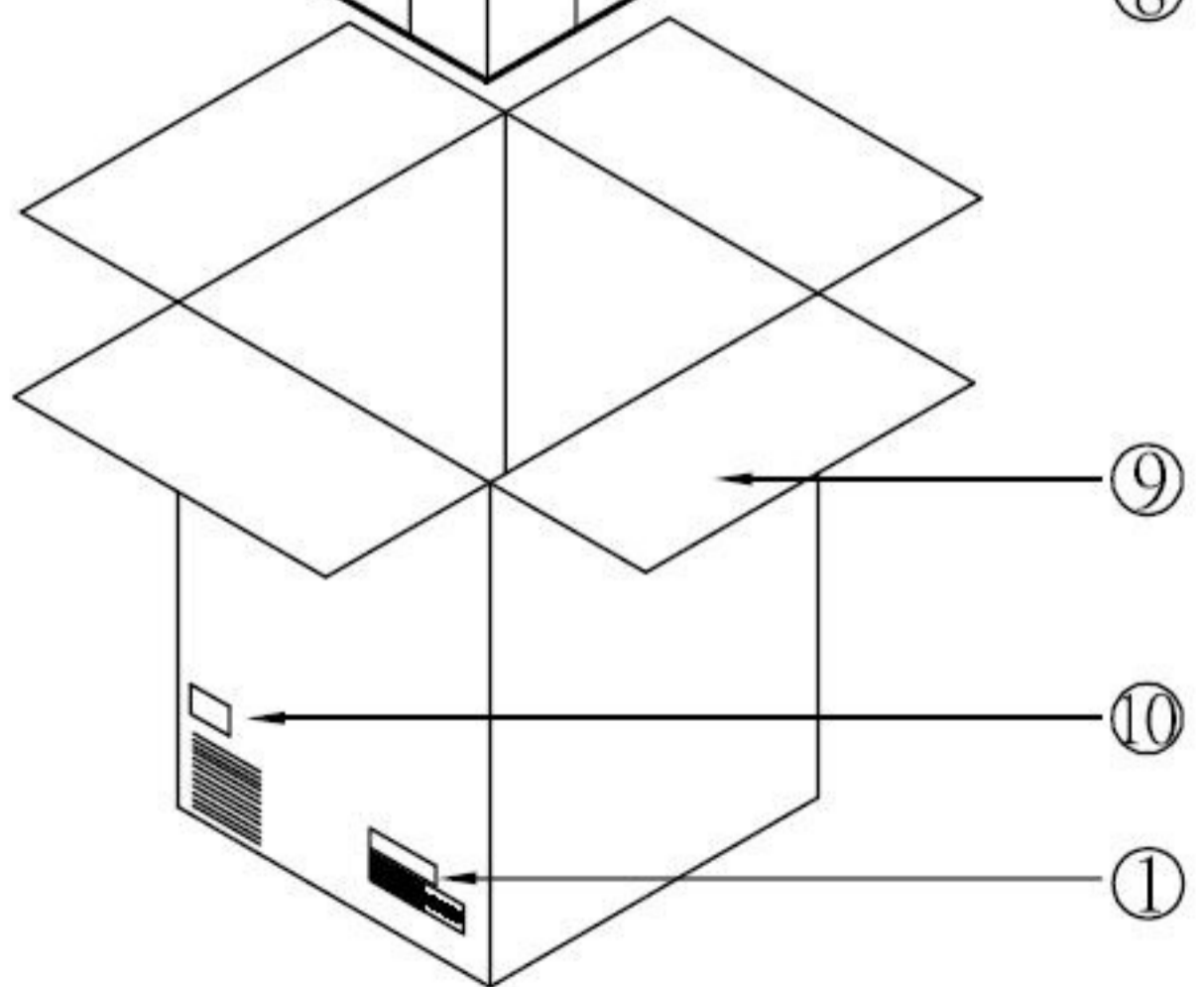
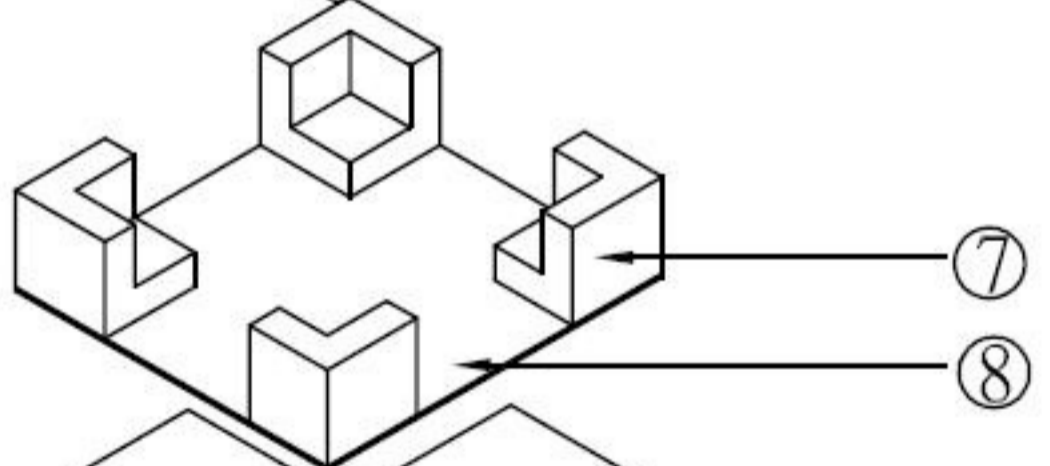
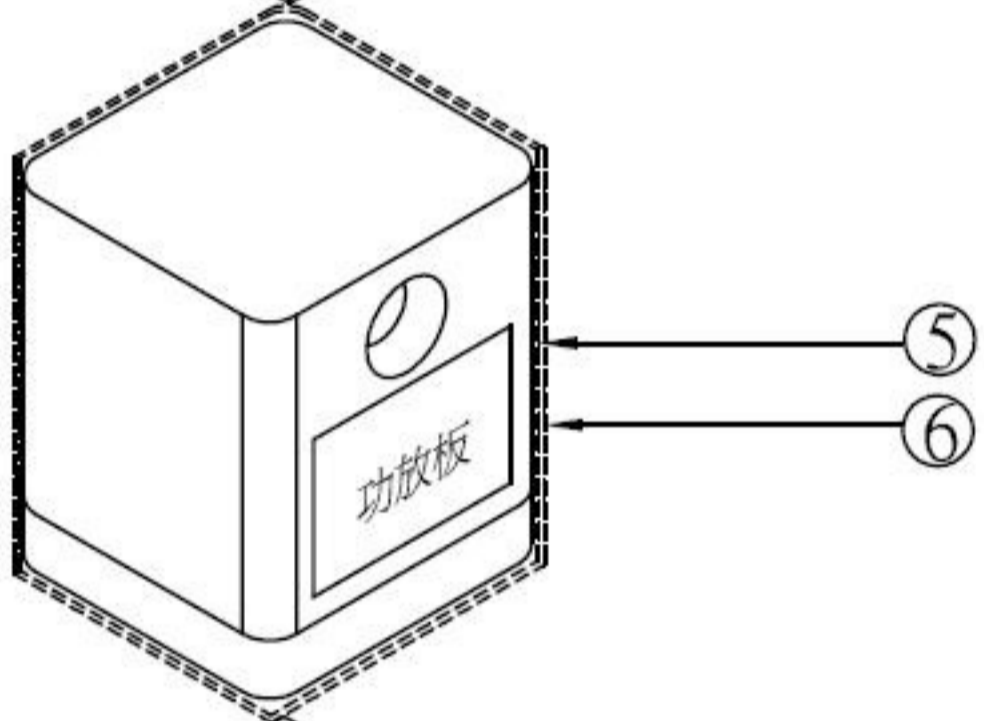
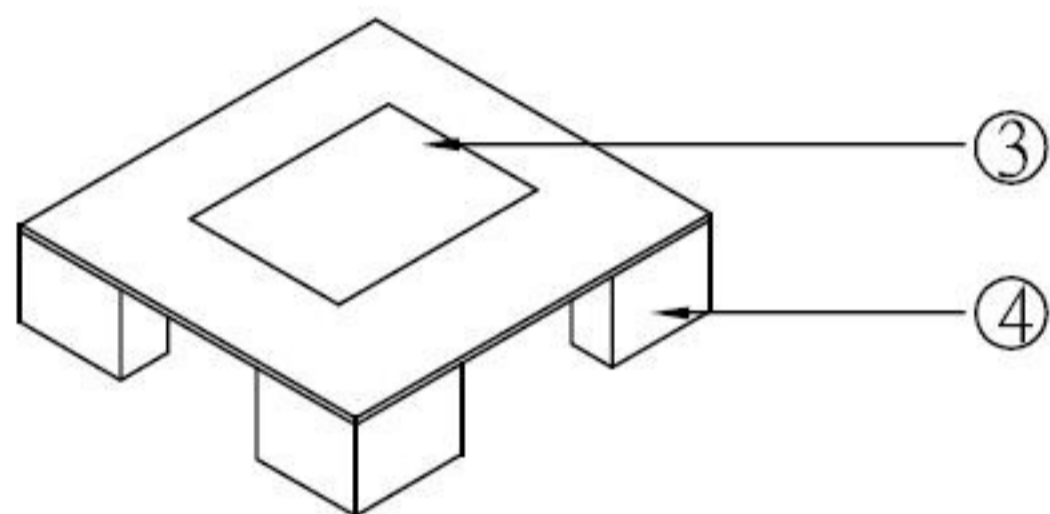
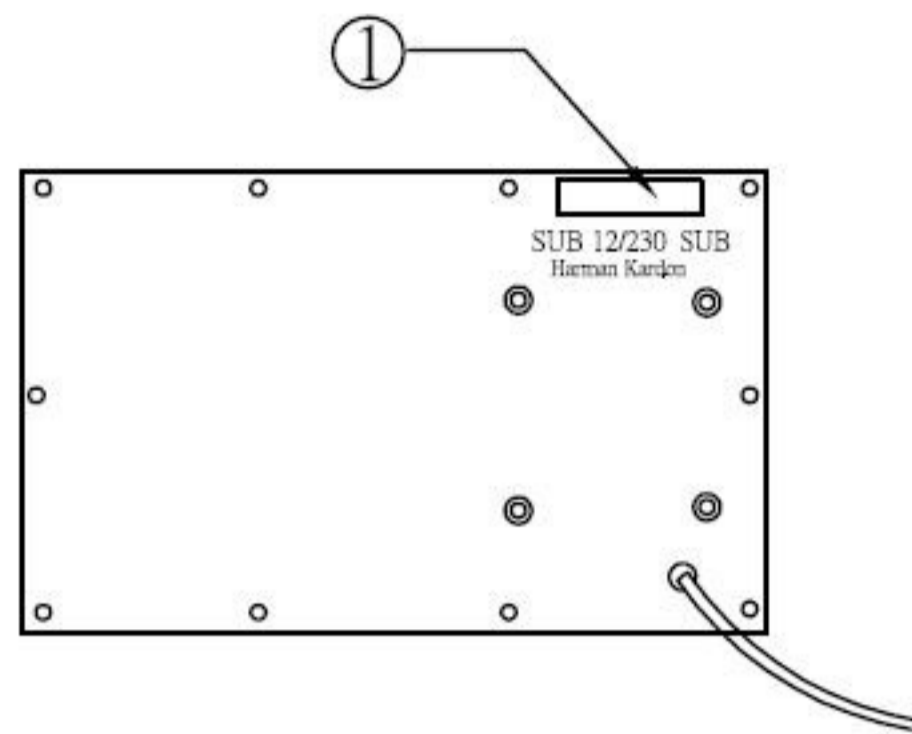
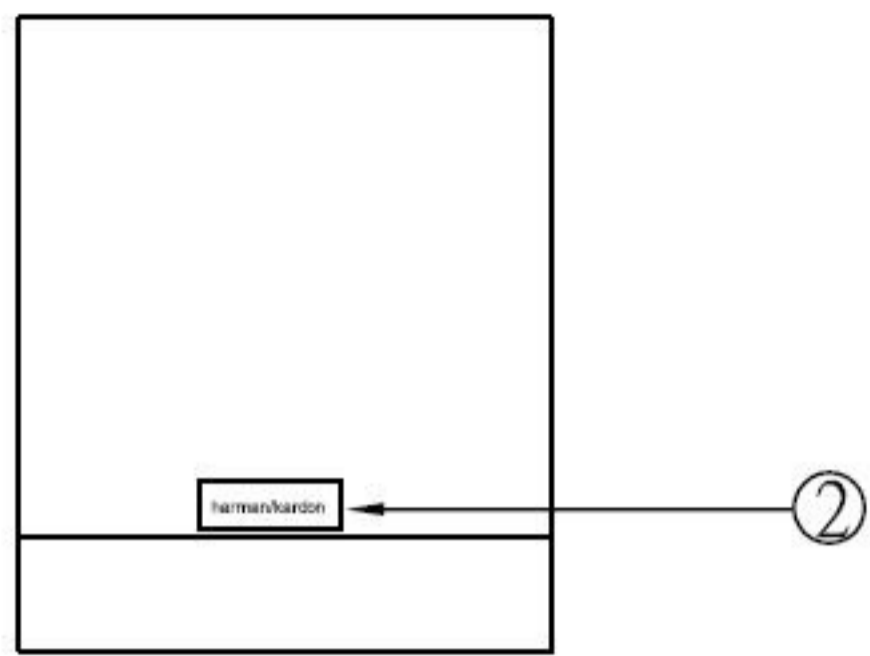


402-000-06439-E

413-000-06384-E

411-000-08723-E

	QC	MAKER	PACKAGE GUIDE	HARMAN-KARDON	
	✓	✓			

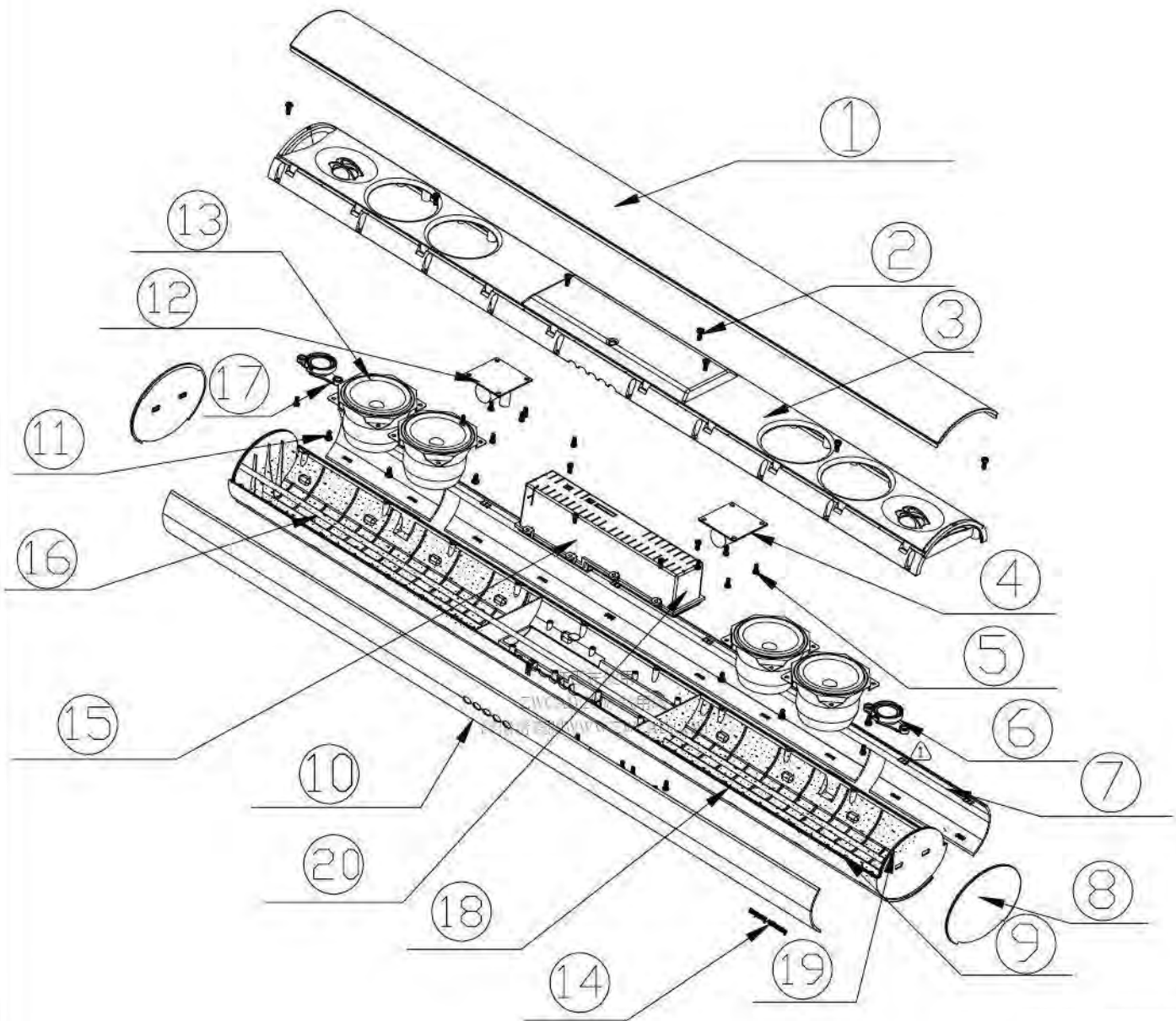


1	Serial label	411-000-08482-E	1.0
2	Coo label	413-000-05591-E	1.0
3	O/M	406-000-06423-E	1.0
4	EPE+PAPER	431-000-07022-E	1.0
5	Non-woven cloth	283-001-05105-0WAE	1.0
6	PO Bag	424-000-00185-E	1.0
7	EPE+PAPER	431-000-07023-E	1.0
8	Dessicant	398-000-00304-E	1.0
9	Gift Box	402-000-06493-E	1.0
10	Coo label	413-000-06384-E	1.0
ITEM	NAME	PART NO.	Q'TY

Apvd. By	Engineer	Check. By	Dsgn. By

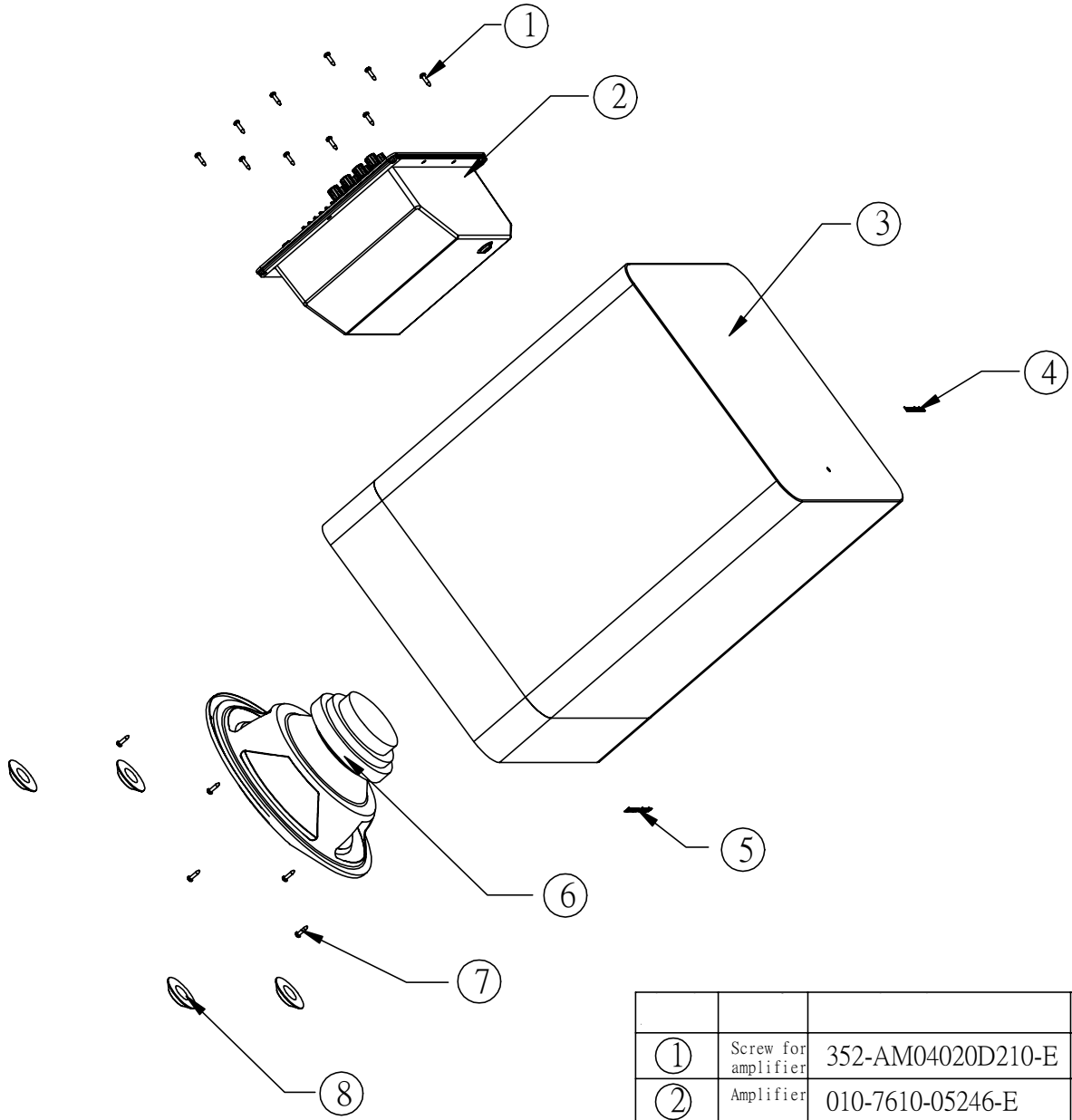
2011/01/05

SB 16CNTR/230



item	Description	Part Number	usage unit	item	Description	Part Number	usage unit
1	grille	329-030-05464-0BAE	1	11	screw	352-AM04008C1334-E	16
2	screw	352-AM03410D112-E	20	12	crossover	013-7600-05766-2E	1
3	baffle	243-030-05259-0BAE	1	13	woofer	32PF65JZP-PVMD2-E	4
4	crossover	013-7600-05766-3E	1	14	logo	316-AG-00556-0VAE	1
5	screw	352-AM03008C1086-E	22	15	amp	010-DND3-05354-E	1
6	tweeter	32DM20AX-HT03-E	2	16	damping	328-000-05855-0WAE	2
7	bottom trim panel	315-ABS-05231-0BAE	1	17	tweeter bar	398-ABS-05062-E	2
8	end cap	305-ABS-05037-0BAE	2	18	EVA	214-000-05467-0BAE	4
9	rear cabinet	247-030-05099-0BAE	1	19	EVA	214-000-05409-0BAE	4
10	top trim panel	315-ABS-05230-0BAE	1	20	EVA	214-000-05408-0BAE	2

n/l		
3	0	1



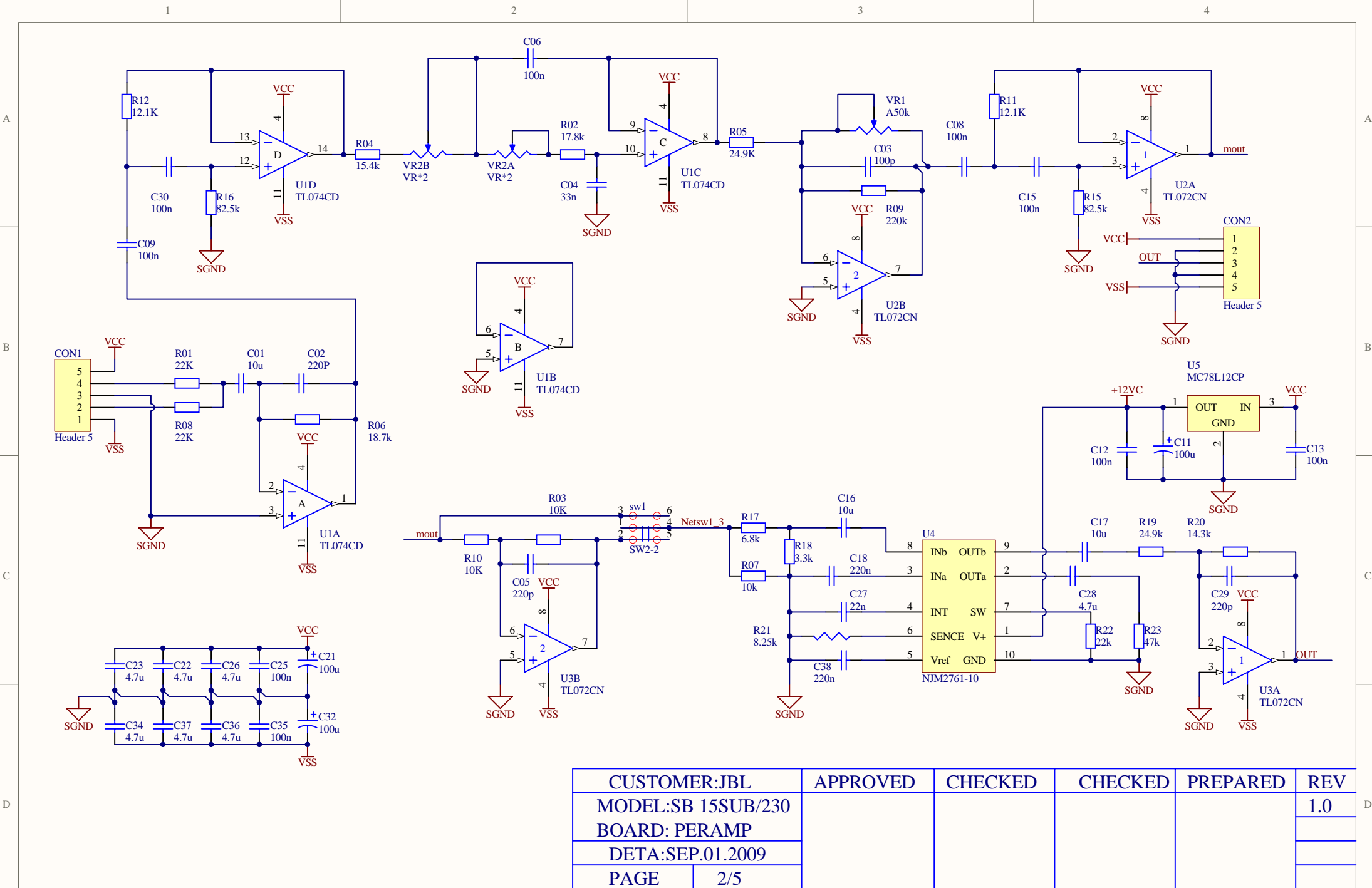
①	Screw for amplifier	352-AM04020D210-E	10
②	Amplifier	010-7610-05246-E	1
③	Wood Cabinet	241-100-00613-2BCE	1
④	Logo	316-AG-00557-E	1
⑤	Logo for grille	316-AL-00553-E	1
⑥	Woofer	25PF12DZB-FW01-E	1
⑦	Screw for woofer	352-FM04020D605-E	5
⑧	Rubber Foot	320-RUB-00057-0BAE	4

△					
△					
△					
△					
ISSUE	REVISIONS	DATE	NAME		2009/12/03 Page 6 of 29

Harman/Kardon SB15 wireless subwoofer. System Parts list.
The sub is used in the SB 16/230 soundbar system.

SB15 Sub

Part Number	Part Description
352-AM04020D210-E	Screw for Subwoofer
010-7610-05246-E	Amplifier SB15/230 SUB
241-100-00613-2BCE	Wood Cabinet
316-AG-00557-E	Harman Kardon Logo for the Sub top board
316-AL-00553-E	Logo for grille
25PF12DZB-FW01-E	10" Subwoofer
352-FM04020D605-E	Screw for woofer to wood cabinet
320-RUB-00057-0BAE	Rubber pad for subwoofer cabinet
051-A05264D-E	POWER AMP PCB ASSY SB15 SUB
051-A05264C-E	PCB WIRELESS BCB ASSY SB15 SUB
051-A05264B-E	PRE AMP PCB ASSY SB15 SUB
051-A05264A-E	STANDBY PCB ASSY SB15 SUB
302-FE-05275-0BAE	Subwoofer Amplifier panel
150-E0764201-E	Transformer
152-V60202603-E	Power Cord
154-V09006T0-E	Fuse
155-520020-E	Fuse holder
162-50652003-E	Speaker Wire
180-P3024DB-E	Power Rock Switch
306-ABS-05082-0BAE	Rear Enclosure
323-AL-05184-0LAE	Aluminum heat sink
335-NYL-00002-0BAE	Power Cord Strain Relief
311-ABS-00028-0BAE	Knob



CUSTOMER:JBL	APPROVED	CHECKED	CHECKED	PREPARED	REV
MODEL:SB 15SUB/230					1.0
BOARD: PERAMP					
DETA:SEP.01.2009					
PAGE	2/5				

A

A

B

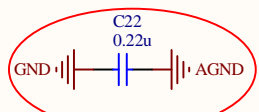
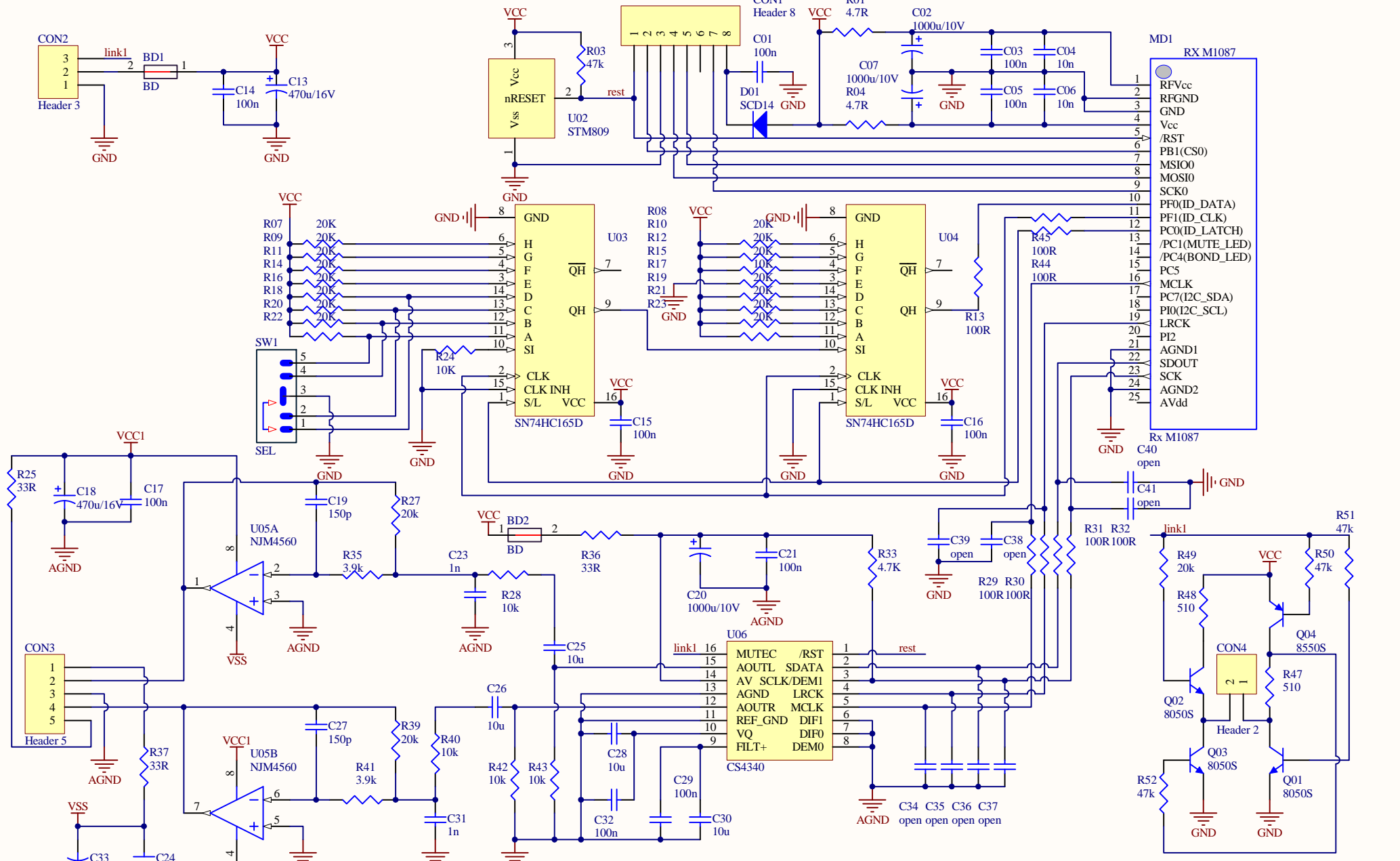
B

C

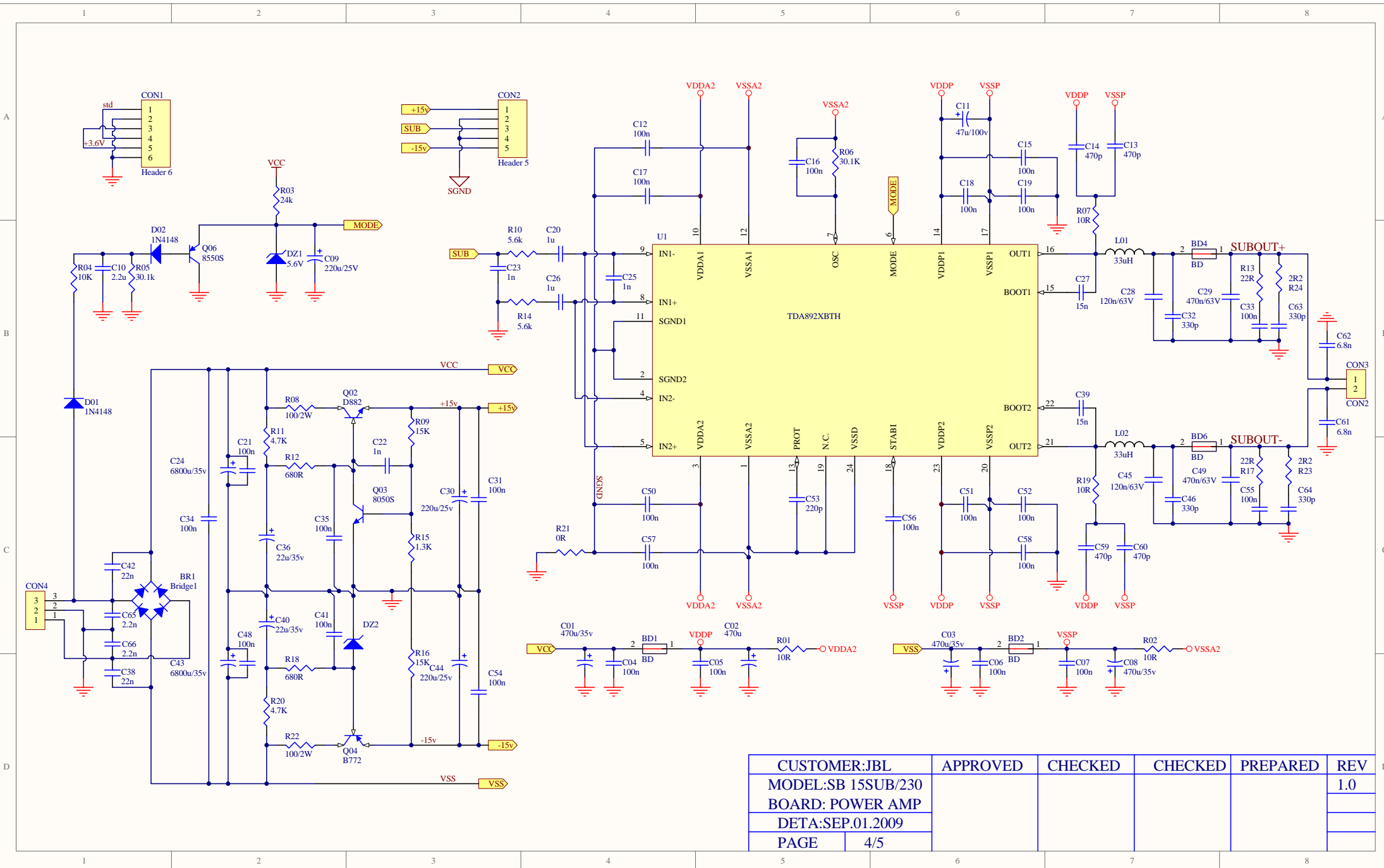
C

D

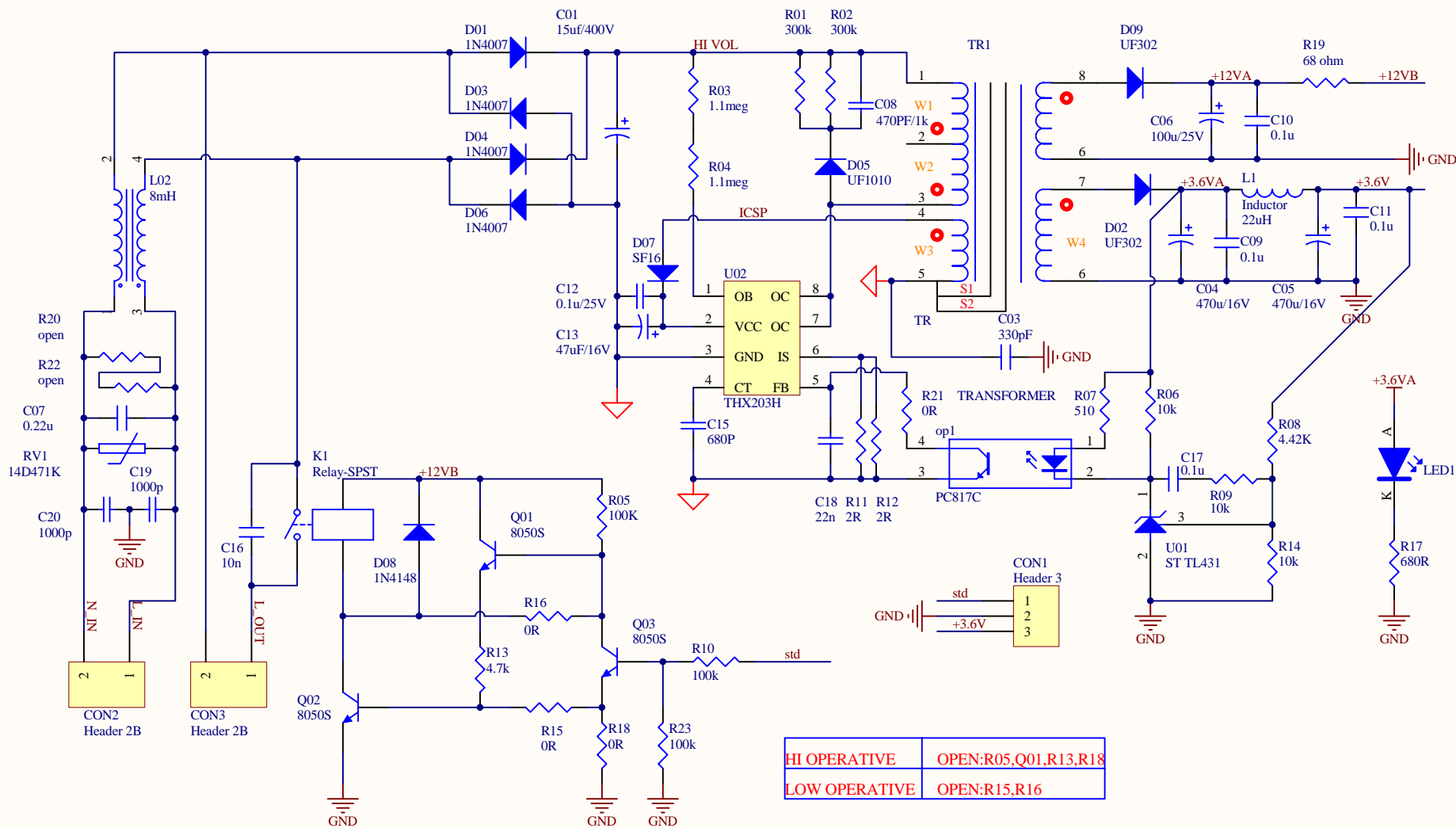
D



CUSTOMER:JBL	APPROVED	CHECKED	CHECKED	PREPARED	REV
MODEL:SB 15SUB/230					1.0
BOARD: WIRLESS					
DETA:SEP.01.2009					
PAGE	3/5				



CUSTOMER:JBL	APPROVED	CHECKED	CHECKED	PREPARED	REV
MODEL:SB 15SUB/230					1.0
BOARD: POWER AMP					
DETA:SEP.01.2009					
PAGE	4/5				



HI OPERATIVE	OPEN:R05,Q01,R13,R18
LOW OPERATIVE	OPEN:R15,R16

CUSTOMER:JBL	APPROVED	CHECKED	CHECKED	PREPARED	REV
MODEL:SB 15SUB/230					1.0
BOARD: STANDBY POWER					
DETA:SEP.01.2009					
PAGE	5/5				

ASSEMBLY AND DISASSEMBLY, SB 16 SOUNDBAR.

Because the design itself, once disassembling the system, the top bottom trim panels snap points will break and new trim panel has to be replaced

1 Check the cabinet



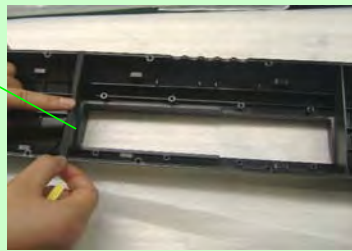
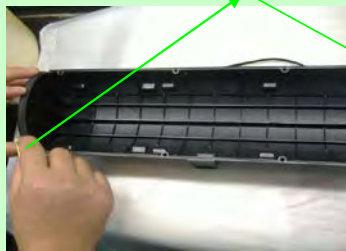
Check the baffle



Attach protective film on the rear cabinet



2 Attach EVA foam gasket



attach EVA foam gasket



3 load woofer (screw PN 352-AM04008C1334-E X 16 pcs)



4 load tweeter



add adhesives

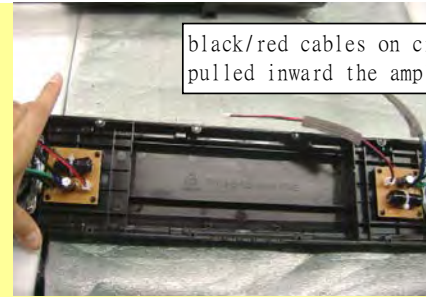


attach tweeter bar and screw down screw pn 352-AM03008C1086-E



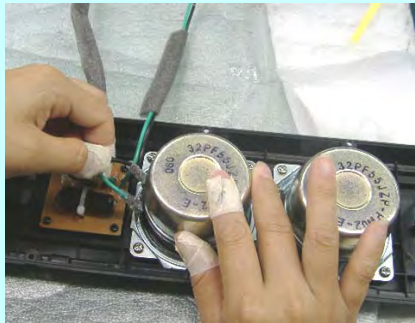
5 left chan Xover (P/N 013-7600-05766-E) right chan xover (P/N 013-7600-05766-1E)

Screw PN 352-AM03008C1086-E



6 Plug green/black cables to the woofer, green cable for + polarity, and black for - polarity

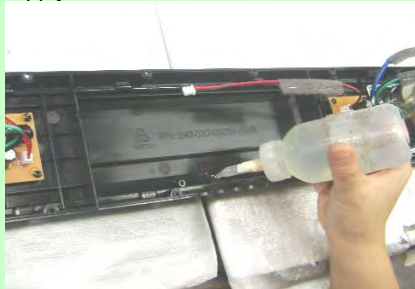
plug blue cable to tweeter +, and black to tweeter -



7 Apply adhesives

Assemble knobs/LEDs

Screw PN 352-AM03008C1086-E X 1 pcs



8 Assemble Amp

Screw down amp (Screw X 9 pcs PN: 352-AM03008C1086-E)

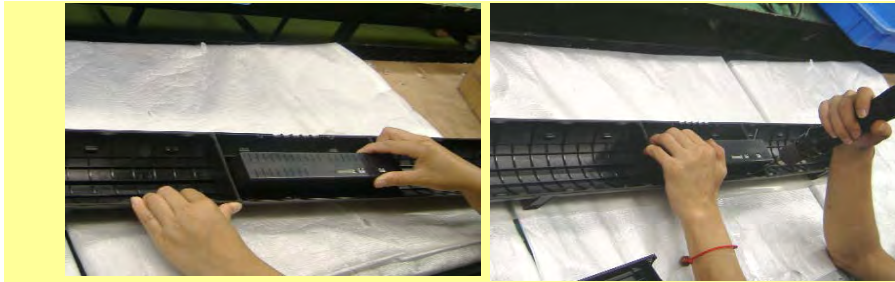
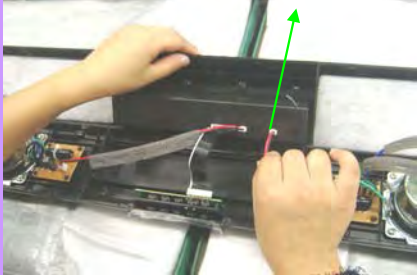


圖 1

9 load in insulation X 2 pcs



10 plug in xover harness to the amp



plug in button.key harness



left channel crossover



right channel crossover



11 attach baffle to rear enclosure

scrw PN 352-AM03510D112-E X 20 pcs



12 apply adhesives

press in the grille



13 Snap in the top gloss trim panel

snap in the bottom gloss trim panel



14 attach the side end cap (peel off adhesive) and add super glue

attach the end cap to the cabinet



SB 16/230

Active speaker soundbar

Owner's Manual



harman/kardon
by HARMAN

SB 16/230

Table of Contents

INTRODUCTION	3
DESCRIPTION AND FEATURES	3
INCLUDED ITEMS	3
SOUNDBAR TOP-PANEL CONTROLS	4
SOUNDBAR REAR-PANEL CONTROLS AND CONNECTIONS	4
SUBWOOFER REAR-PANEL CONTROLS	5
SPEAKER PLACEMENT	6
PLACING THE SOUNDBAR ON A TABLE	6
WALL-MOUNTING THE SOUNDBAR	6
PLACING THE SUBWOOFER	6
CONNECTIONS	7
SOURCE CONNECTIONS	7
POWER CONNECTIONS	8
OPERATION	9
TURNING THE SOUNDBAR ON AND OFF	9
TURNING THE SUBWOOFER ON AND OFF	9
ADJUSTING THE SYSTEM'S VOLUME	9
MUTING THE SYSTEM	9
SOUNDBAR SURROUND MODE BUTTON	9
SOUNDBAR SRC (SOURCE) BUTTON	9
SUBWOOFER VOLUME KNOB	10
SOUNDBAR TRIM SWITCH	10
WIRELESS CODE SWITCHES	10
SUBWOOFER CROSSOVER KNOB	10
SUBWOOFER PHASE SWITCH	10
PROGRAMMING THE SOUNDBAR TO RESPOND TO YOUR TV REMOTE	11
TROUBLESHOOTING	12
SPECIFICATIONS	13

SB 16/230

Introduction, Description and Features, Included Items

Introduction

Please register your product on our Web site at www.harmankardon.com.

Note: You'll need the product's serial number. At the same time, you can choose to be notified about our new products and/or special promotions.

Thank you for purchasing the harman kardon® SB 16/230 speaker system, with which you're about to begin many years of listening enjoyment. The SB 16/230 has been custom-designed to provide the excitement and power of the cinema experience in your own living room.

While sophisticated electronics and state-of-the-art speaker components are hard at work within the SB 16/230, hookup and operation are simple.

To obtain maximum enjoyment from your new soundbar speaker system, we urge you to take a few minutes to read through this manual. This will help ensure that the connections you make are correct. In addition, a few minutes spent learning the functions of the various controls will enable you to take advantage of all the power and refinement the SB 16/230 is able to deliver.

If you have any questions about this product, its installation or its operation, please contact your retailer or custom installer, or visit our Web site at www.harmankardon.com.

Description and Features

The SB 16/230 is a complete home theater speaker system that includes:

- A video-shielded stereo soundbar speaker (the SB 16 CTR) with two-way dual-driver left and right speakers and built-in 25-watt x 2 stereo amplifier
- A 10-inch (250mm), 100-watt wireless powered subwoofer (the SB 15/230 SUB)
- Wall-mount brackets for the soundbar
- A 6.5-foot (2m) stereo audio cable for connecting the system directly to your TV's audio output.

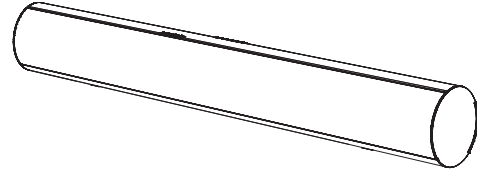
The SB 16 CTR soundbar contains the system's left and right speakers and stereo amplifiers, and features digital signal processing with virtual 3D surround circuitry that creates a complete surround-sound experience without any extra speakers or wires. You can set the soundbar on a table in front of your TV; also, the system includes hardware that makes it easy to mount the soundbar on the wall along with your flat-panel TV. You can program the soundbar to respond to your TV remote's volume, power and source commands.

The SB 15/230 SUB subwoofer receives its signal from the SB 16 CTR soundbar via wireless technology, so you can place it anywhere in your room without having to run any wires. Its 10-inch (250mm) woofer and built-in 100-watt amplifier deliver a movie's impact and excitement. Other conveniences include a volume control, a phase switch for fine-tuning bass performance to suit your listening environment, and an efficient switching system that senses the presence of an audio signal and automatically switches the subwoofer on.

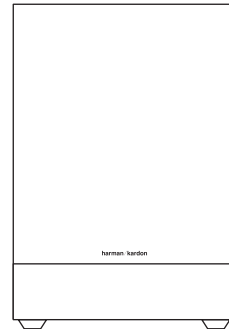
harman kardon invented the high-fidelity receiver more than 50 years ago. With state-of-the-art features and time-honored circuit designs, the SB 16/230 system will turn your flat-screen TV into a fun and exciting home theater.

Included Items

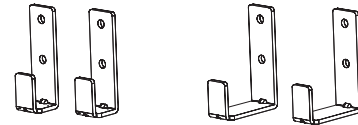
One SB 16 CTR soundbar speaker



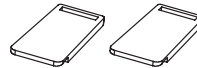
One SB 15/230 SUB 10-inch (250mm) 100-watt wireless subwoofer



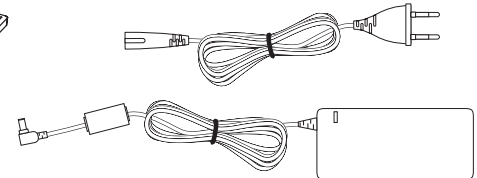
Two sets of wall-mount brackets for the soundbar – one shallow and one extended (for when the optical digital audio input is being used)



Two rubber feet



One 24V DC power supply and one AC power cord for the SB 16CTR speaker



One 1.5m (5-ft) optical digital audio cable



One 2m (6.5-ft) stereo audio cable

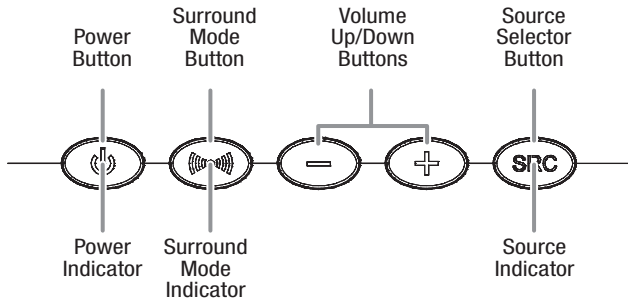


Important: If anything is missing, or if any part of your SB 16/230 system fails to operate properly, contact your dealer immediately.

SB 16/230

Soundbar Top-Panel Controls and Soundbar Rear-Panel Controls and Connections

Soundbar Top-Panel Controls



Power Button: When the soundbar is in the Standby mode (the Power Indicator is amber), press this button to turn the SB 16/230 system on (the Power Indicator turns blue.) NOTE: When the soundbar is in the Standby mode, it will automatically turn on whenever it detects an audio signal at the Source 1 (analog) inputs.

When the SB 16/230 system is on:

- Momentarily press the Power button to mute the SB 16/230 system. (The Power Indicator flashes blue.)
- Hold down the Power button for three seconds to put the soundbar in the Standby mode. (The Power Indicator turns amber.) NOTE: The subwoofer will remain on for approximately 15 minutes after the audio signal ceases and then will automatically go into the Standby mode.

Surround Mode Button: This button turns the SB 16/230 system's 3D Surround processing On and Off. The Surround Mode Indicator turns blue when 3D Surround is active and turns white when 3D Surround is not active (normal stereo sound). See *Soundbar Surround Mode Button*, on page 9, for more information.

Volume Up/Down Buttons: Press the (-) button to reduce the volume; press the (+) button to increase the volume.

Source Selector Button: This button switches between the sources connected to the Source 1 (analog) and Source 2 (digital) inputs. When Source 1 is active, the Source Indicator turns white; when Source 2 is active, the Source Indicator turns blue.

Soundbar Rear-Panel Controls and Connections

Wireless Code Switch: Selects between four different channels for the wireless subwoofer signal.

IMPORTANT: Be sure to set the subwoofer's Wireless Code switch to the same channel that you set the soundbar's Wireless Code switch. See *Wireless Code Switches*, on page 10, for more information.

EQ Switch: This switch adjusts the soundbar's bass for either wall or table mounting. If you're mounting the soundbar on a wall with the included wall-mount brackets, set this switch to the *Wall* position for the most natural-sounding bass performance. If you are placing the soundbar on a table, set the EQ switch to the *Table* position for the most natural-sounding bass performance.

Trim Switch: This switch adjusts the soundbar's input sensitivity so it will work with TVs that have different audio signal output levels. See *Soundbar Trim Switch*, on page 10, for more information.

Source 1 Connection (analog): Use the included stereo audio cable to connect the stereo analog outputs of your TV, DVD player or cable/satellite tuner here.

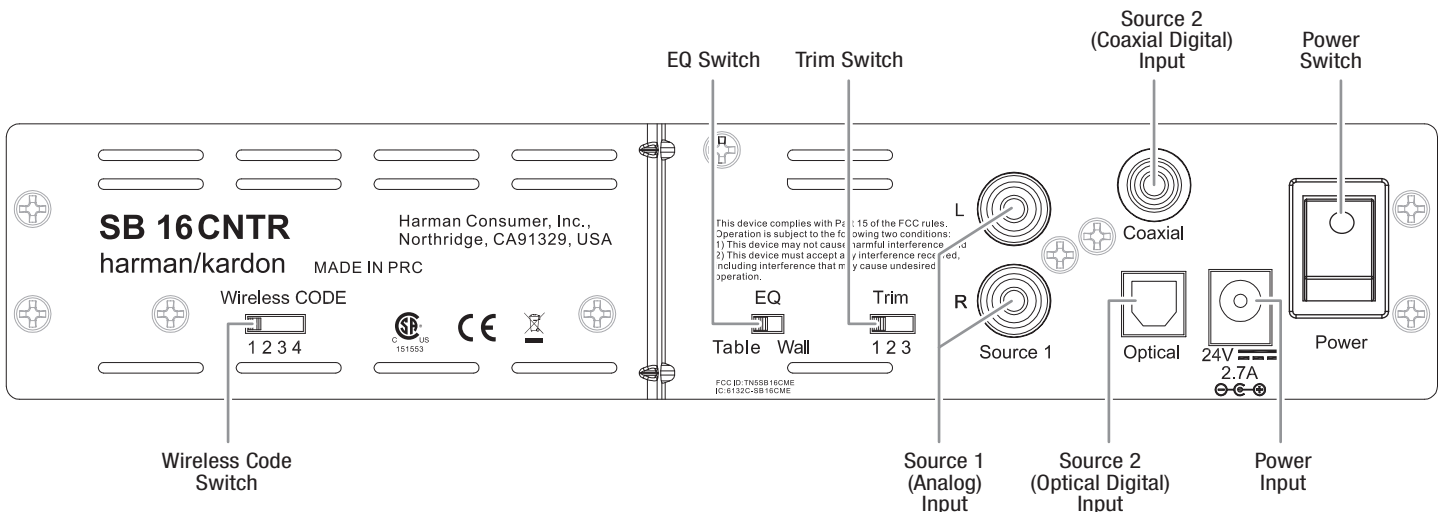
Source 2 Connection (digital): If your TV, DVD player or cable/satellite tuner has a coaxial digital output, you can connect it here.

NOTE: If you connect your TV or another component to the soundbar's Source 1 connection, you can connect a different component to the Source 2 connection.

Power Connection: Connect the included DC power supply here. See *Power Connections*, on page 8, for more information.

IMPORTANT: Do not connect the power supply's AC cord to an AC outlet until you have made and verified all connections.

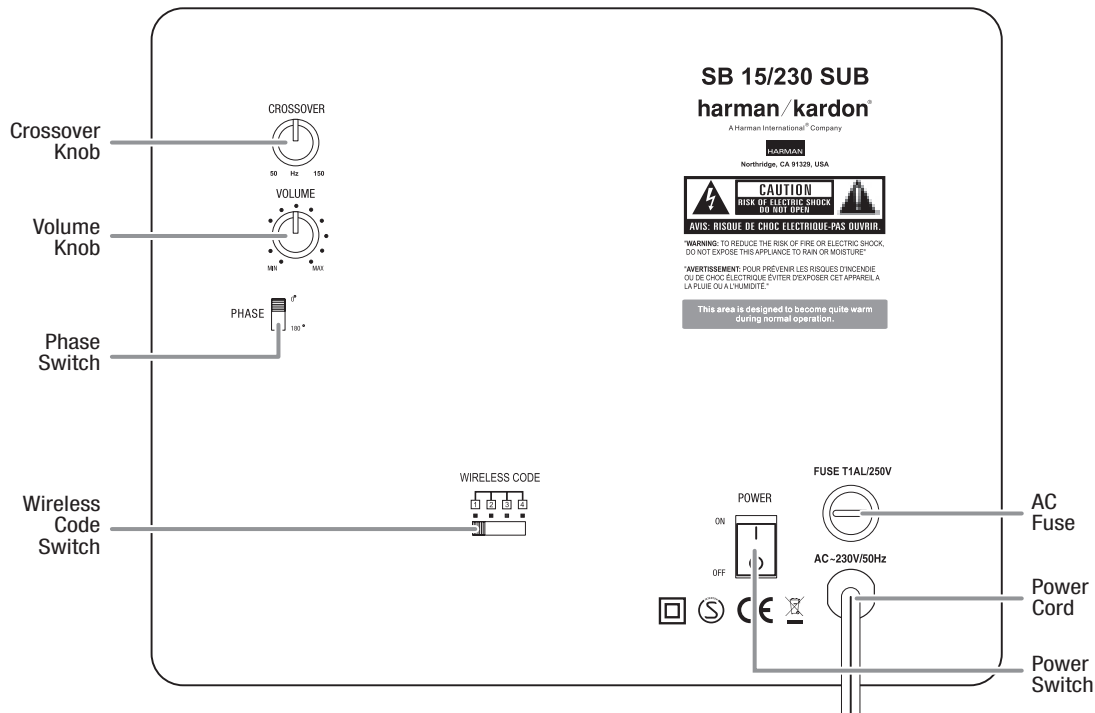
Power Switch: Set this switch to the On position (press the switch's white dot) to activate the soundbar. In normal operation, this switch will be left in the On position. See *Turning the Soundbar On and Off*, on page 9, for more information.



SB 16/230

Subwoofer Rear-Panel Connections

Subwoofer Rear-Panel Controls



Crossover Knob: This knob adjusts the subwoofer's crossover between 50Hz and 150Hz. The higher you set the Crossover knob, the higher in frequency the subwoofer will operate and the more its bass will "overlap" that of the soundbar. This adjustment helps achieve a smooth transition of bass frequencies between the subwoofer and the soundbar for a variety of different rooms and subwoofer locations. See *Subwoofer Crossover Knob*, on page 10, for more information.

Volume Knob: Use this control to balance the subwoofer's volume with that of the soundbar. Turn the knob clockwise to increase the subwoofer's volume; turn it counterclockwise to decrease the subwoofer's volume.

Phase Switch: This switch determines whether the subwoofer driver's piston-like action moves in and out in phase with the speakers in the soundbar. If the subwoofer were to play out of phase with the soundbar speakers, the sound waves from the soundbar could cancel out some of the sound waves from the subwoofers, reducing bass performance and sonic impact. This phenomenon depends in part on the placement of the subwoofer and soundbar relative to each other in the room. See *Subwoofer Phase Switch*, on page 10, for more information.

Wireless Code Switch: Selects between four different channels for the wireless subwoofer signal.

IMPORTANT: Be sure to set the soundbar's Wireless Code switch to the same channel as you set the subwoofer's Wireless Code switch. See *Wireless Code Switches*, on page 10, for more information.

AC Fuse: The SB 15/230 SUB is factory-equipped with a T1A/250V 1A – 250V AC fuse. If the fuse ever blows:

1. Unplug the power cord from the wall.
2. Use a screwdriver to remove the blown fuse.
3. Replace the fuse with an identical T1A/250V 1A – 250V AC fuse.

CAUTION: FOR CONTINUED PROTECTION AGAINST FIRE, REPLACE THE FUSE ONLY WITH THE SAME TYPE AND RATING.

Power Cord: Plug this cord into an active, unswitched AC outlet. See *Power Connections*, on page 8, for more information.

Power Switch: Set this switch to the On position to activate the subwoofer. In normal operation, this switch will be left in the On position. See *Turning the Subwoofer On and Off*, on page 9, for more information.

Status Indicator (on top of unit, not shown): Turns blue when the subwoofer's power switch is in the On position; turns amber when the subwoofer is in Standby; turns off when the subwoofer's Power switch is in the Off position.

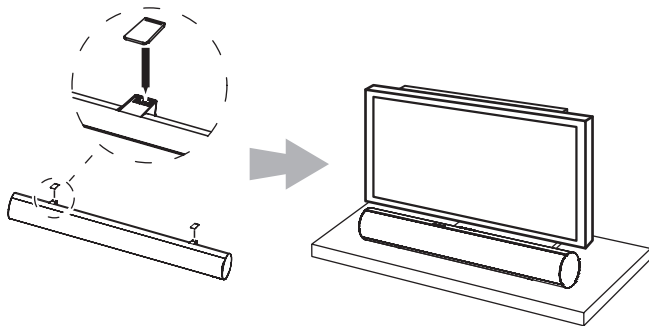
SB 16/230

Speaker Placement

Speaker Placement

Placing the Soundbar on a Table

If your TV is placed on a table, you can place the soundbar on the table directly in front of the TV stand, centered with the TV screen. Attach the supplied rubber feet to the soundbar as shown in the illustration.



As long as the table's surface is flat, the soundbar will rest on the rubber feet.

Wall-Mounting the Soundbar

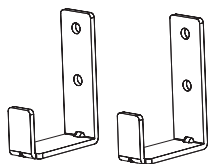
If your TV is attached to a wall, you can use the included wall-mount brackets to mount the soundbar on the wall directly below the TV screen.

1. Determine the location for the soundbar on the wall. Make sure that the top of the soundbar will not block your view of the TV screen when it is mounted on the wall.
2. Mark the locations of the soundbar wall-mount bracket holes on the wall. The holes for the left and right brackets are spaced 600mm apart and are designed to accept #8 screws. The top and bottom holes for each bracket are spaced 25mm apart. See the illustration below.

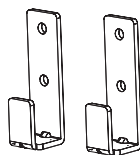


NOTE: To ensure that the soundbar will be level, use a carpenter's level, laser sight or other device to ensure that the two sets of holes are at exactly the same height.

3. If you are using the soundbar's optical digital audio input, select the extended wall-mount brackets. Otherwise, select the shallow wall-mount brackets.



When Optical Digital Input is Used

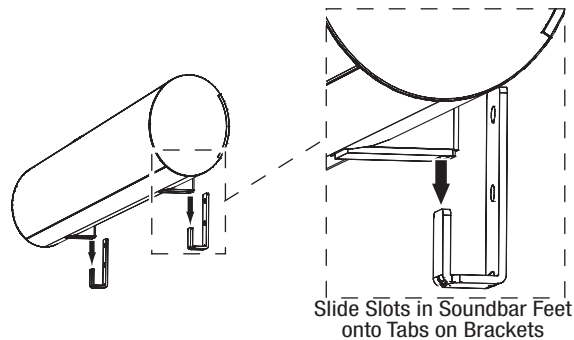


When Optical Digital Input is Not Used

4. Attach the two wall-mount brackets to the wall at the locations you marked, using hardware that is appropriate for the wall's construction and materials. Note that the soundbar weighs 3.6kg (8 lb). Be sure to use hardware that can support this weight.



5. After making all of the connections described in the *Connections* section, on page 7, attach the soundbar to the brackets by sliding the slots in its feet onto the brackets' vertical tabs.

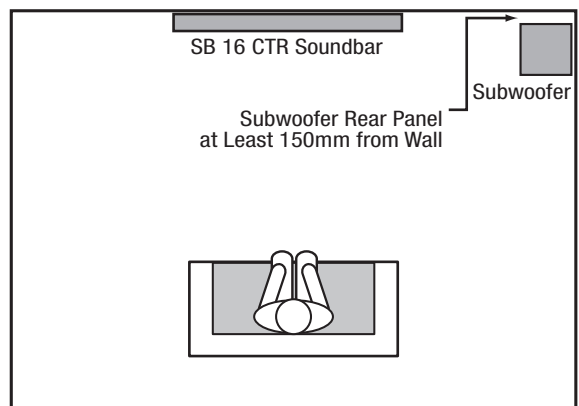


Slide Slots in Soundbar Feet onto Tabs on Brackets

Placing the Subwoofer

Since our ears do not hear directional sound at the low frequencies where the subwoofer operates, it will perform well from just about any location in your room. However, the strongest bass reproduction is likely to be heard when the subwoofer is placed in a corner along the same wall as the soundbar.

IMPORTANT: Make sure that the subwoofer's rear panel is at least 150mm (6") from the wall to allow proper operation of its port tube opening.



You can experiment with subwoofer placement by temporarily placing the subwoofer in the listening position and playing music with strong bass content. Move around to various locations in the room while the system is playing and listen until you find the location where the bass performance is best. Place the subwoofer in that location.

IMPORTANT: The maximum wireless operating distance between the soundbar and subwoofer is approximately 15.3m (50 feet).

SB 16/230

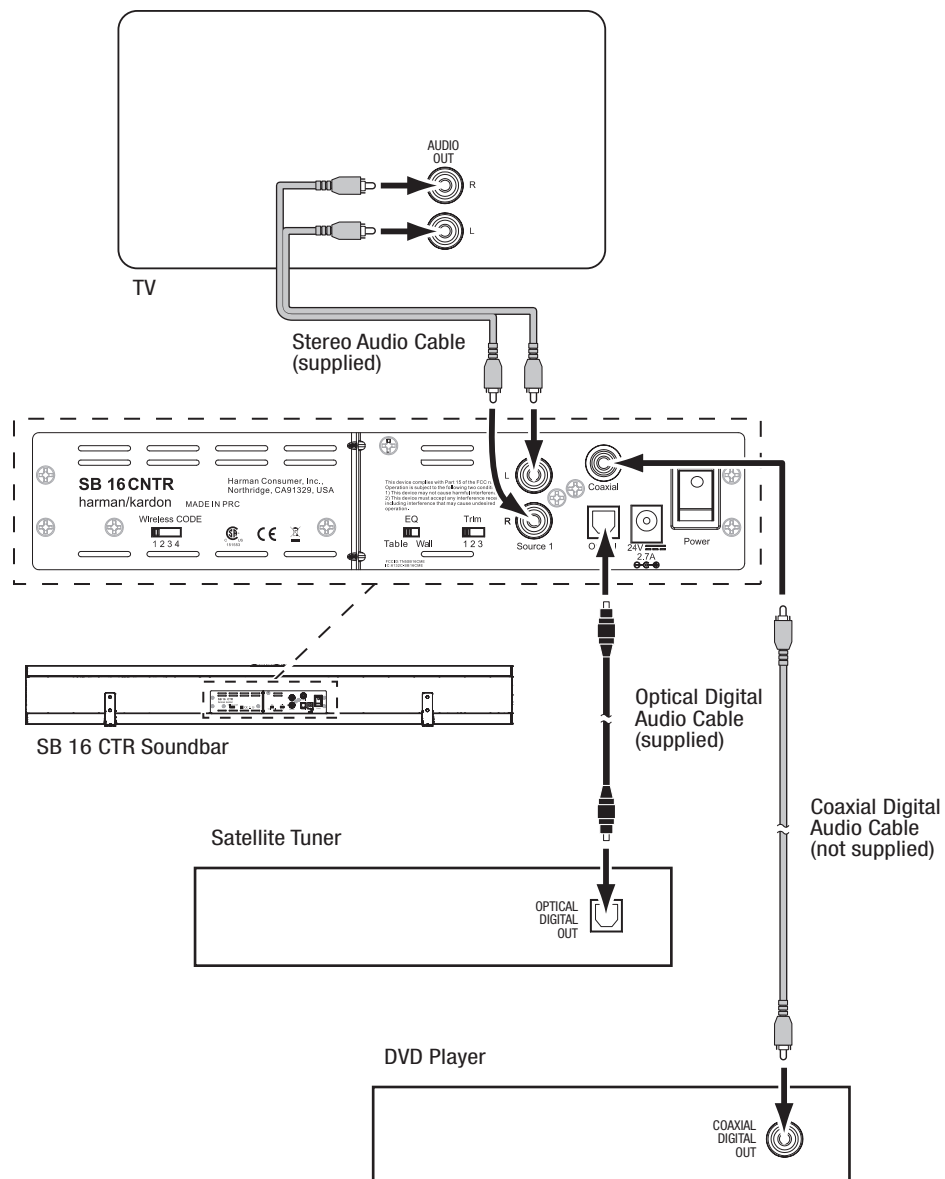
Connections

Source Connections

Analog: Use the supplied stereo audio cable to connect the soundbar's Source 1 (analog) input to your TV's stereo audio output. If your TV has two sets of audio output jacks, use the set that has a fixed (not variable) output level. This will let you turn your TV's speakers all the way off while the TV still supplies a constant audio signal to the soundbar.

Digital: If your DVD player, cable tuner or satellite tuner have coaxial or optical digital outputs, you can use the supplied optical digital audio cable and a coaxial digital audio cable (not supplied) to connect them to the soundbar's Optical and Coaxial digital inputs.

NOTE: If your DVD player, cable tuner or satellite tuner does not have a coaxial digital output, you can connect its analog audio output to your TV. The TV will send its audio signal to the soundbar through the analog connection described above.



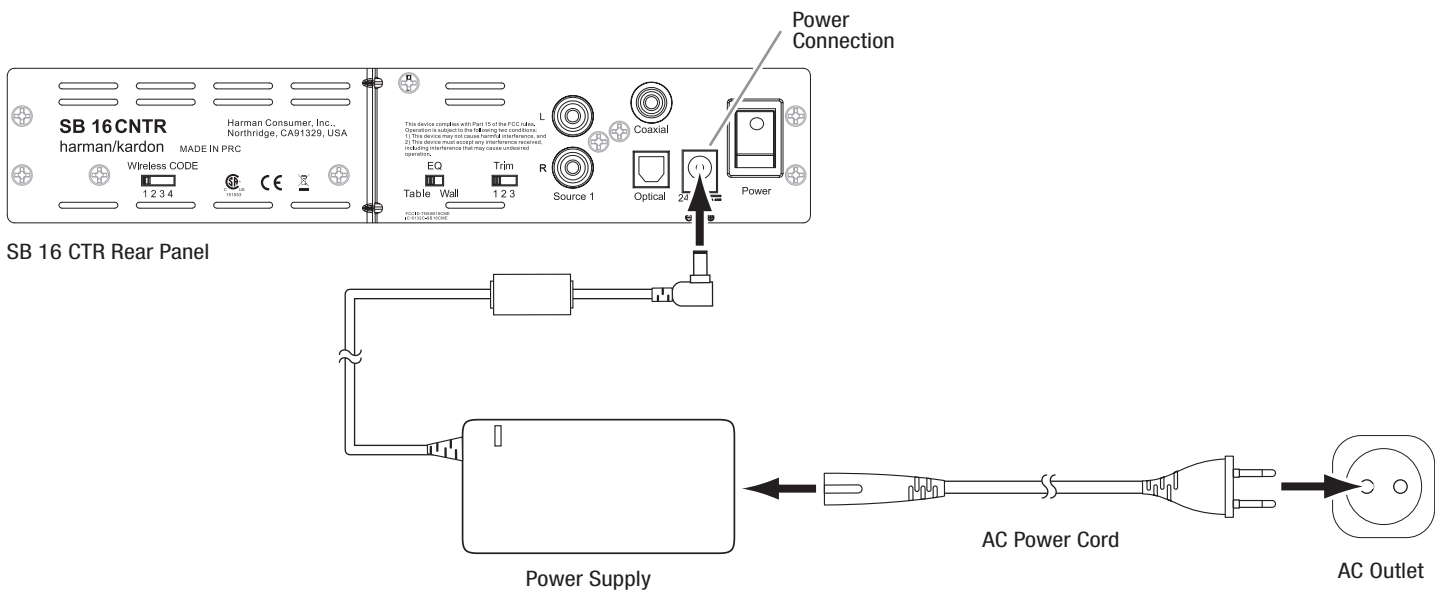
SB 16/230

Connections

Power Connections

After you have made and verified all of the source connections above:

1. Connect the DC power supply to the soundbar's power connection. Then plug the supplied AC cord into the DC power supply and into an active, *unswitched* AC outlet. DO NOT plug this cord into the accessory outlets found on some audio components.
2. Plug the subwoofer's power cord into an active, *unswitched* AC outlet. DO NOT plug this cord into the accessory outlets found on some audio components.

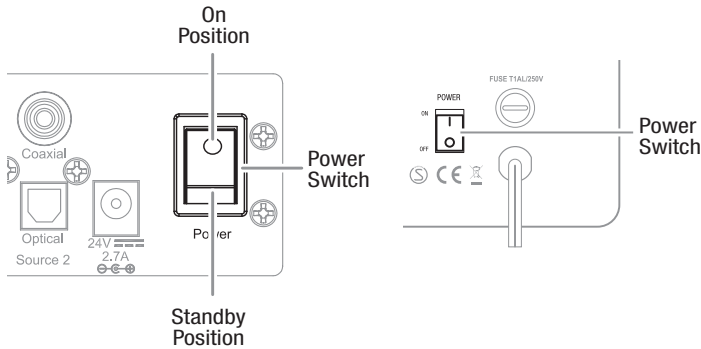


SB 16/230

Operation

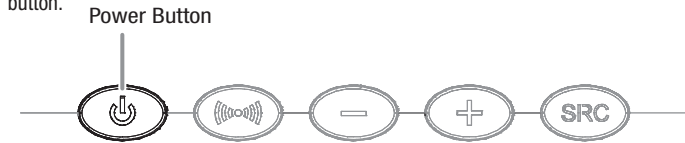
Operation

Set the soundbar's and subwoofer's Power switches in their On positions.



Turning the Soundbar On and Off

Manually: To turn the soundbar on manually, momentarily press the soundbar's Power button.



To put the soundbar into Standby manually, hold the Power button for at least three seconds.

NOTE: If you put the soundbar into Standby manually, you can turn it back on only by manually pressing the Power button again.

Auto turn-on: The soundbar has a signal detector that will automatically turn the unit on when it senses an audio signal at any of its inputs. To minimize power consumption, the signal detector is not activated unless the soundbar first senses any kind of IR remote signal. This does not have to be a remote code that has been learned by the soundbar (see *Programming the Soundbar to Respond to Your TV Remote*, on page 11) – turning your TV on or changing its volume via its remote will be enough.

Once the soundbar's signal detector has been activated, the unit will automatically turn from Standby to On as soon as it detects an input signal at any of its Source input connections.

Auto turn-off: The soundbar will automatically enter the Standby mode if no audio signal is detected at any of its Source input connections for approximately 15 minutes. If you have programmed the soundbar to respond to your TV remote's on and off commands, you can manually put the soundbar into the Standby mode without having to hold its Power button for three seconds. See *Programming the Soundbar to Respond to Your TV Remote*, on page 11.

If you will be away from home for an extended period of time, or if you will not be using the system for an extended period, set the soundbar's Power switch to Off.

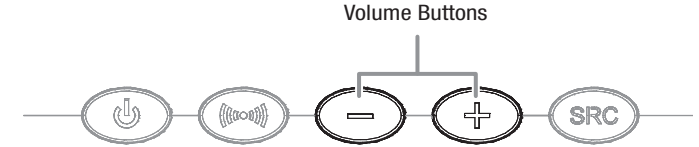
Turning the Subwoofer On and Off

The subwoofer will automatically turn itself on when it receives an audio signal, and it will return to the Standby mode when it has received no audio signal for 15 minutes. The subwoofer's LED will turn *blue* when the subwoofer is on, and will turn *amber* when the subwoofer is in Standby.

If you will be away from home for an extended period of time, or if you will not be using the system for an extended period, set the subwoofer's Power switch to the Off position.

Adjusting the System's Volume

Press the soundbar's Volume Up and Down buttons to raise and lower the system's volume one step at a time. Hold down the buttons to raise or lower the volume continuously. **NOTE:** The lowest setting of the Volume Down button will mute the system.



If the system will not play loud enough or quiet enough, adjust the Trim Switch (see *Soundbar Trim Switch*, on page 10).

For the best sound, we recommend turning your TV's built-in speakers off. Consult your TV's owner's manual to find out how to do this. If there is no way to turn your TV's speakers off, you can adjust the TV's volume so that your SB 16/230 system will always supply most of the sound:

1. Using the volume buttons on your TV, turn its volume all the way down.
2. Then use the soundbar's Volume Up/Down buttons to set the sound to a comfortable listening level.

This way, your SB 16/230 system should always be louder than your TV's speakers. **NOTE:** This may reduce the volume of your TV's output connection, so you may have to set the soundbar's Trim Switch to position 3 to compensate. See *Soundbar Trim Switch*, on page 10.

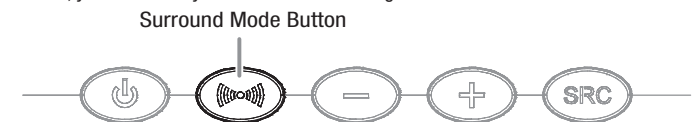
Muting the System

Momentarily press the soundbar's Power button to mute the system. (The Power Indicator flashes blue.) Momentarily press the Power button again to un-mute the system. (The Power Indicator turns to a steady blue.)



Soundbar Surround Mode Button

This button switches the sound between normal stereo (the Surround Mode Indicator turns white) and 3D Surround (the Surround Mode Indicator turns blue). The 3D Surround setting will produce a complete surround-sound experience for anyone sitting in front of and several feet away from the soundbar. Although it is particularly effective when watching movies, you can also try the 3D Surround setting for music.



Soundbar SRC (Source) Button

Each press of this button switches the soundbar's audio source between the optical digital connection, the coaxial digital connection and the analog connections.

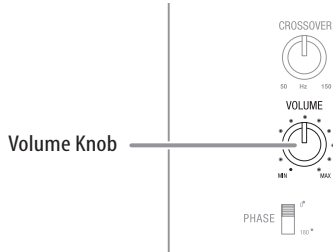


SB 16/230

Operation

Subwoofer Volume Knob

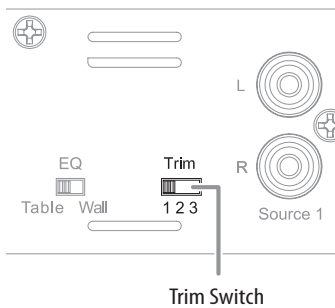
Use the subwoofer's Volume knob to balance the bass with the rest of the sound. Play music or movies that you are familiar with and adjust the subwoofer's Volume knob so the bass sounds balanced on both music and films. Listen to several different music recordings and film soundtracks that contain strong bass passages, and find a setting for the Volume knob that doesn't over-emphasize the bass or make it sound weak.



Once you find a setting for the subwoofer's Volume knob that balances the bass with the rest of the sound, you shouldn't have to change it.

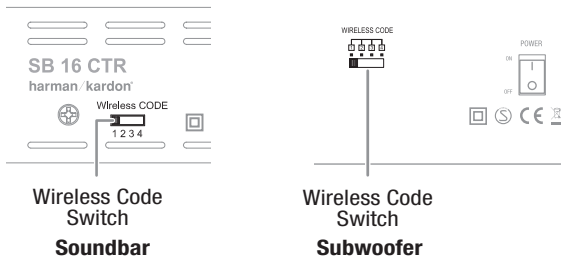
Soundbar Trim Switch

This switch adjusts the soundbar's audio input sensitivity so it will work with TVs that have different audio signal output levels. If your TV's audio signal output is low, the soundbar may not play loud enough. In this case, set the Trim switch to position 3 so the soundbar will play louder. If your TV's audio signal output is high, you may hear distortion in the soundbar at normal listening volumes. In this case, set the Trim Switch to position 1 to reduce the distortion and improve the sound.



Wireless Code Switches

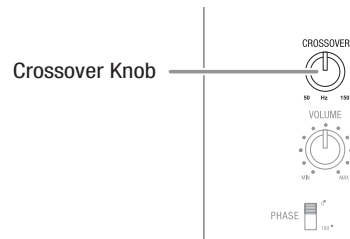
In the unlikely event that you encounter interference when operating the system, or if you have more than one SB 16/230 system in operation, you may change the wireless channel at which the system operates. There are four-position Wireless Code switches on both the soundbar and subwoofer. To change the wireless channel, simply set each of the switches to one of the other three positions. **IMPORTANT: The switches on the soundbar and the subwoofer must be set to the same position for the wireless system to work properly.**



NOTE: The maximum wireless operating distance between the soundbar and subwoofer is approximately 50 feet (15.3m).

Subwoofer Crossover Knob

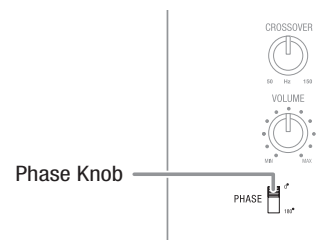
The subwoofer's Crossover knob adjusts the subwoofer's crossover between 50Hz and 150Hz. The higher you set the Crossover knob, the higher in frequency the subwoofer will operate and the more its bass will "overlap" that of the soundbar. This adjustment helps achieve a smooth transition of bass frequencies between the subwoofer and the soundbar for a variety of different rooms and subwoofer locations.



To set the Crossover knob, listen for the smoothness of the bass. If the bass seems too strong at certain frequencies, try a lower Crossover knob setting. If the bass seems too weak at certain frequencies, try a higher Crossover knob setting.

Subwoofer Phase Switch

This switch determines whether the subwoofer's piston-like action moves in and out in phase with the speakers in the soundbar. If the subwoofer were to play out of phase with the soundbar speakers, some of the sound waves produced by the soundbar and subwoofer could be canceled out at some frequencies, reducing bass performance and sonic impact. This phenomenon depends in part on the relative placement of all the speakers in the room.

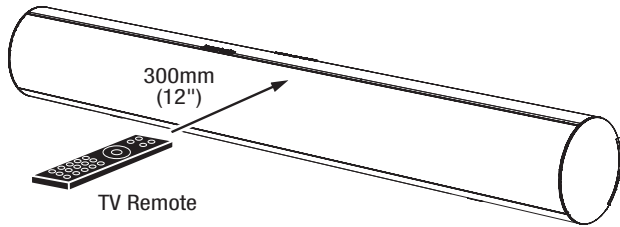


Although there is no absolutely correct setting for the Phase switch, in most cases it should be left in the 0° position. When the subwoofer is properly in phase with the soundbar speakers, the sound will be clearer and have more impact. This will make percussive sounds like drums, piano and plucked strings sound more lifelike. The best way to set the Phase switch is to listen to music that you are familiar with and adjust the switch so that drums and other percussive sounds have maximum impact.

Programming the Soundbar to Respond to Your TV Remote

You can program the soundbar so it will respond to your TV remote's power off, mute, volume up, volume down and source commands. This programming lets you control your whole home theater system with a single remote. Before beginning to program the soundbar, have your TV remote in hand. We recommend sitting down in front of the soundbar.

NOTE: Some steps will time out, so read through this entire procedure before you begin. Have the remote handy. When you start the remote programming after step 4, be ready to aim the TV remote at the front of the soundbar from about 300mm – 900mm (about 12 – 36 inches) away.



To program the Mute command: Repeat steps 1 and 2. At step 3, press and hold the soundbar's Power button until the Surround and Source buttons switch to constant illumination. Then proceed to step 4.

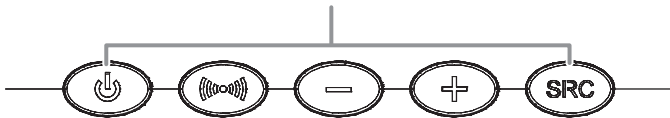
To erase all remote programming: Ensure that the soundbar is on, then simultaneously press and hold the soundbar's Surround Mode and Volume Up buttons until the lights in all the buttons flash.

NOTE: If at any time the Surround and Source buttons both stop flashing, and the soundbar returns to the power-on state, the programming operation has failed. In this case, restart at step 2.

To program the power off, surround, volume down, volume up or source command:

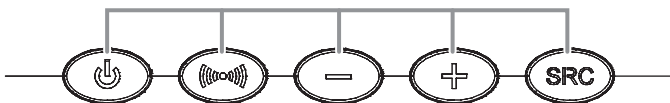
1. Ensure that the soundbar is on.
2. Simultaneously press and hold the soundbar's Power and Source buttons until the visible Surround button flashes blue (the Power and Source buttons also flash but are covered by your fingers). If the buttons do not flash after three seconds, release the buttons and try again.

Hold down both buttons until the Power, Surround and Source buttons indicators flash



3. You now have 20 seconds to momentarily press the soundbar button that you want to program (Power, Surround, Volume Down, Volume Up, Source), or the programming operation will fail and you must restart at step 2. When you are successful, the soundbar Power button light will turn off.

Momentarily press the button you want to program



4. You now have 5 seconds to aim the TV remote at the front of the soundbar and slowly and repeatedly press and release the corresponding button on the remote until the Surround and Source buttons on the soundbar flash and then, after a few seconds, return to constant illumination. This indicates that the programming operation has been successful. Otherwise you must restart at step 2.

SB 16/230

Troubleshooting

Troubleshooting

If your SB 16/230 system isn't performing the way you think it should, check to see if the problem is covered in this section before calling your dealer or contacting a harman kardon representative.

Problem	Solution
If the soundbar does not turn on:	<ul style="list-style-type: none"> • Check that the soundbar power supply's AC cord is plugged into a working AC outlet and that the power supply is plugged into the soundbar. • Check that the soundbar's Power switch is in the On position.
If the subwoofer does not turn on:	<ul style="list-style-type: none"> • Check that the subwoofer's power cord is plugged into a working AC outlet. • Check that the subwoofer's Power switch is in the On position. • Check if the subwoofer's AC fuse has blown. See <i>Subwoofer Rear-Panel Controls: AC Fuse</i>, on page 5, for instructions on checking and changing the fuse.
If there is no sound coming from both the soundbar and the subwoofer:	<ul style="list-style-type: none"> • Check that the soundbar is on (the Power Indicator is blue). • Check that the cable connecting the TV or other source component to the soundbar is properly connected at both ends. • Check that the soundbar's Source Selector is set to the correct source (the Source Indicator turns white for Source 1 – analog and turns blue for Source 2 – digital) and that the source is playing an audio signal. • Check that the system is not muted (when the system is muted, the soundbar's Power Indicator flashes blue). If the system is muted, momentarily press the Power button to un-mute the system. • Check that the soundbar's volume is not turned all the way down (the lowest setting of the Volume Down button will mute the system).
If there is no sound coming from just the subwoofer:	<ul style="list-style-type: none"> • Check that the Subwoofer Volume Control is not turned all the way down (fully counterclockwise). • Check that the Wireless Code switches on the subwoofer and soundbar are both set to the same setting number. • Move the subwoofer closer to the soundbar. The maximum wireless operation distance is 50 feet (15.3m).
If the soundbar's sound is distorted:	<ul style="list-style-type: none"> • Set the soundbar's Trim switch to a lower setting. • Check the source component to see if the distortion is coming from it, and not from the soundbar.
If the system's sound is too quiet, even when the soundbar's volume is turned all the way up:	<ul style="list-style-type: none"> • Set the soundbar's Trim switch to a higher setting. • If the TV or source component is connected via a variable output, check its instructions to be sure that the output is not turned down too low.
If the bass output is not loud enough:	<ul style="list-style-type: none"> • Turn up the subwoofer's Volume knob. • Move the subwoofer into a corner of the room. • Move the subwoofer closer to the seating location.
If the soundbar won't learn your TV remote's commands:	<ul style="list-style-type: none"> • Carefully follow steps 1 – 4 of <i>Programming the Soundbar to Respond to Your TV Remote</i>, on page 11. • Hold the TV remote 12 inches (300mm) in front of the soundbar during the learning procedure. • Although the soundbar will learn commands from most TV remotes, there may be some IR codes that it cannot learn.
If you press your TV remote's Power button and the soundbar turns off when the TV turns on (or vice versa):	<ul style="list-style-type: none"> • Press the Power button on either the soundbar or the TV (but not both) one time. This will put them back in sync so they will turn on and off together when you press the TV remote's Power button.

You can find additional troubleshooting information in the FAQs link on the Support page at www.harmankardon.com.

SB 16/230

Specifications

Specifications

SB 16/230 System

Frequency response	50Hz – 20kHz
--------------------	--------------

SB 16 CTR Soundbar

Midrange transducers	Two x 3" (75mm) cones per channel, video-shielded
High-frequency transducer	One x 3/4" dome per channel, video-shielded
Amplifier power	25 watts x 2
Power requirement	24V DC, 2.5A – 2.7A
Dimensions (H x W x D)	110mm x 920mm x 89mm (4-5/16" x 36-1/4" x 3-1/2")
Weight	3.6kg (8 lb)

SB 15/230 Subwoofer

Woofers	10" (254mm) cone
Enclosure type	Ported
Power requirement	230V AC, 50Hz/60Hz, 100W
Dimensions (H x W x D)	480mm x 380mm x 380mm (18-7/8" x 13-3/8" x 13-3/8")
Weight	15.4kg (34 lb)



HARMAN

HARMAN Consumer, Inc.
8500 Balboa Boulevard, Northridge, CA 91329 USA
516.255.4545 (USA only)

Made in P.R.C.

© 2010 HARMAN International Industries, Incorporated. All rights reserved.
harman kardon is a trademark of HARMAN International Industries, Incorporated, registered in the United States and/or other countries.
Features, specifications and appearance are subject to change without notice.

Part No. 406-000-06266-E

harman/kardon
by HARMAN

www.harmankardon.com