

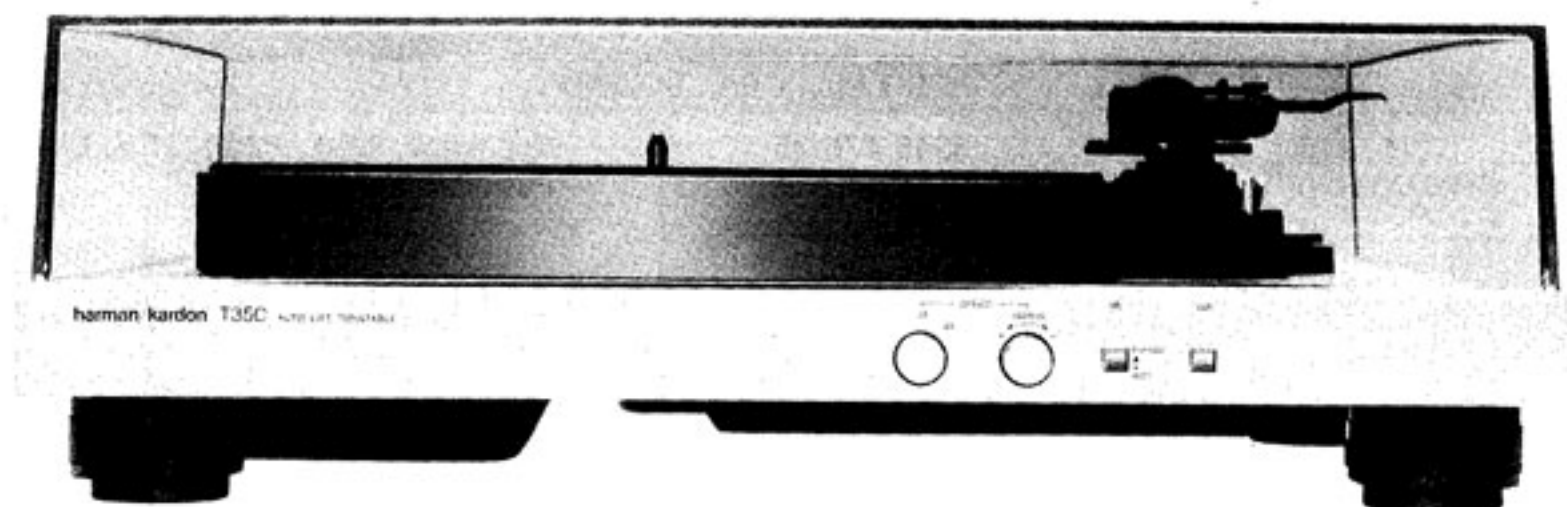
# The Harman Kardon Model T35C

---

## AUTO-LIFT TURNTABLE

Manual No.71B

# Technical Manual



### SUPPLEMENTARY MANUAL

THE MODEL T35C IS IDENTICAL TO THE MODEL T35 EXCEPT FOR AN ADDED CUT SWITCH AND OTHER PART CHANGES AS NOTED IN THIS SUPPLEMENT. REFER TO SERVICE MANUAL NO. 71A FOR ALL OTHER PARTS AND SERVICE INFORMATION.

## GENERAL UNIT PARTS LIST

Ref. No.	Part No.	Description
1	A415-T35CA A415-T35CB	Cabinet Assembly (for U.S.A. & Canada models) Cabinet Assembly (for General model)
2	A443-T35C	Front Panel Assembly
23	914901-2	Foot
39	874045	Bracket

## ELECTRICAL PARTS LIST

Ref. No.	Part No.	Description
<b>CHASSIS MISCELLANEOUS</b>		
P2	871474	Output Cord Assembly (for U.S.A. & Canada models)
SW1	915021-1	Micro-Switch, Rest
LUG2	914359-4	Lug Terminal with Lead Wire
<b>PCB-1 MAIN P.C. BOARD</b>		
C216, 217	5345-476-25	Capacitor, 47 $\mu$ F, $\pm$ 20%, 25V, Electrolytic
SW204/205	915370	Push Switch, Lift, Cut

A

B

C

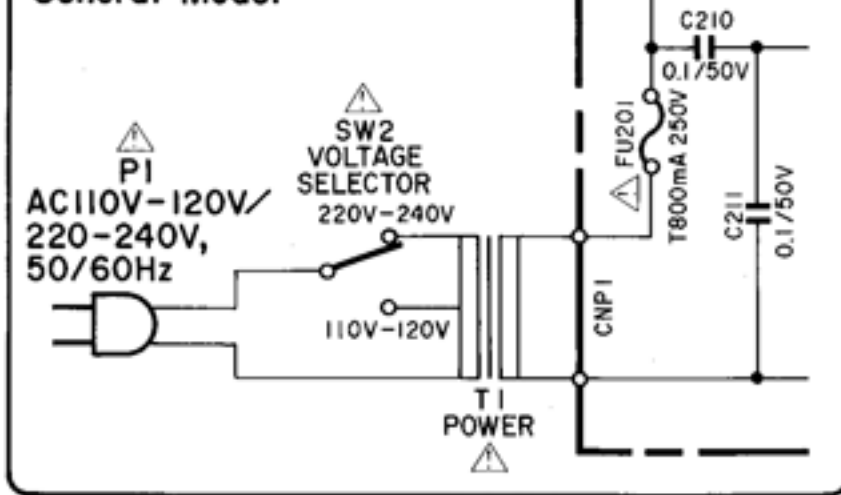
D

E

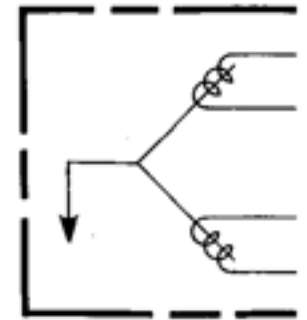
# SCHEMATIC DIAGRAM

1

## General Model



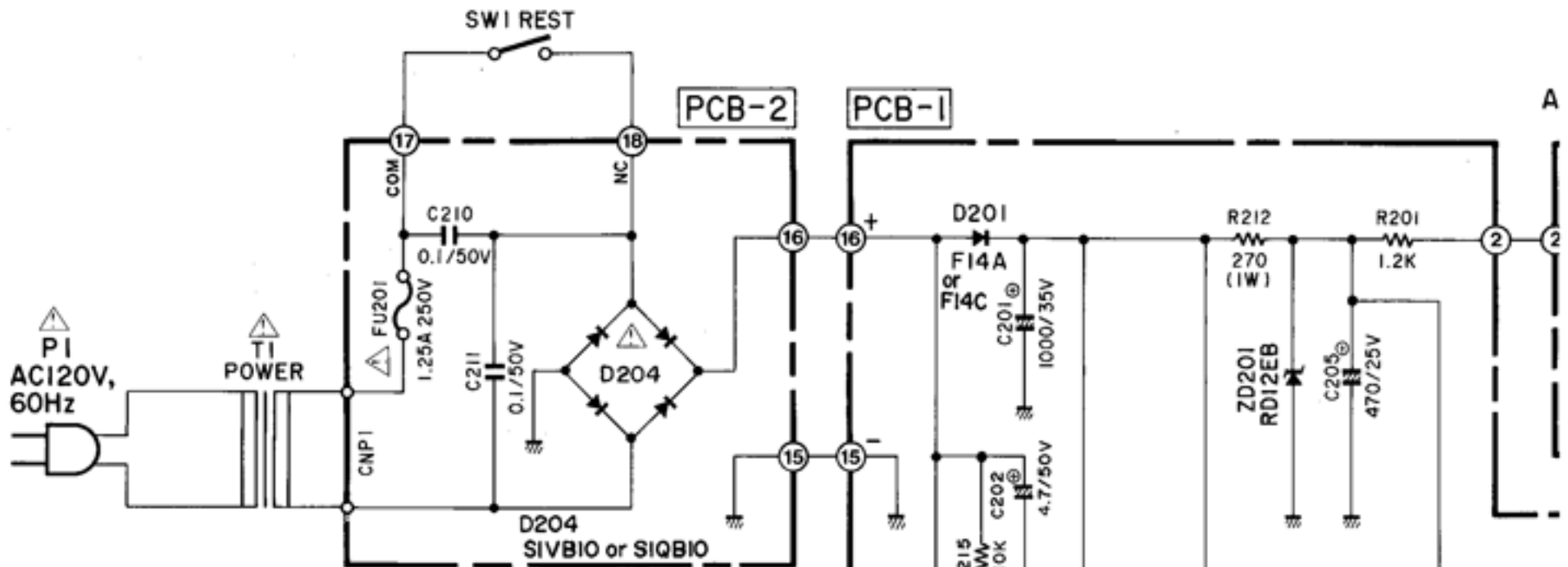
## PICK-UP ASSEMBLY



2

3

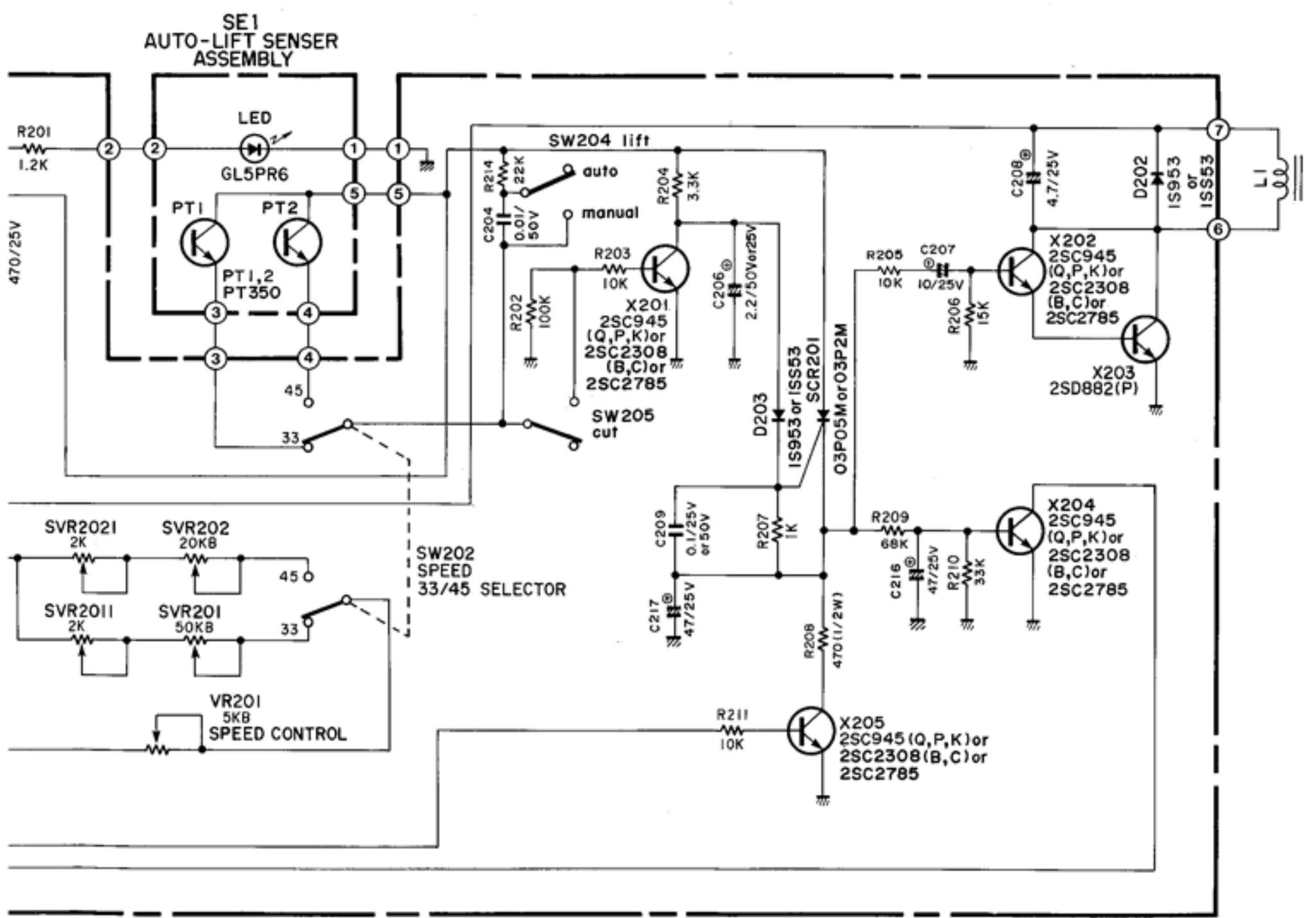
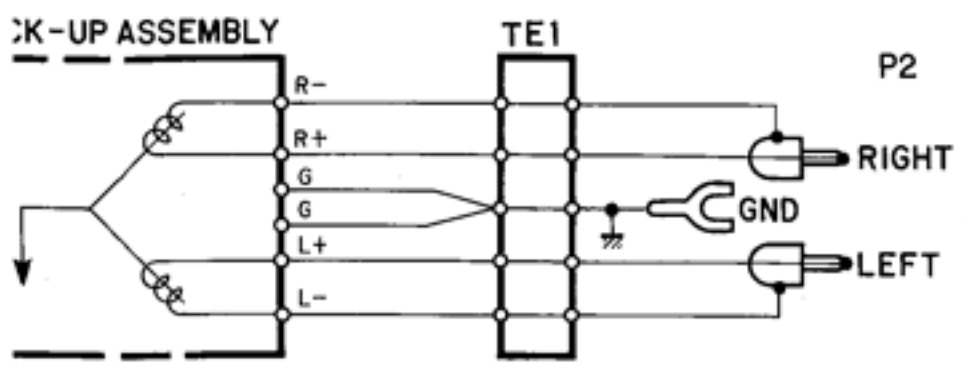
4



5

6

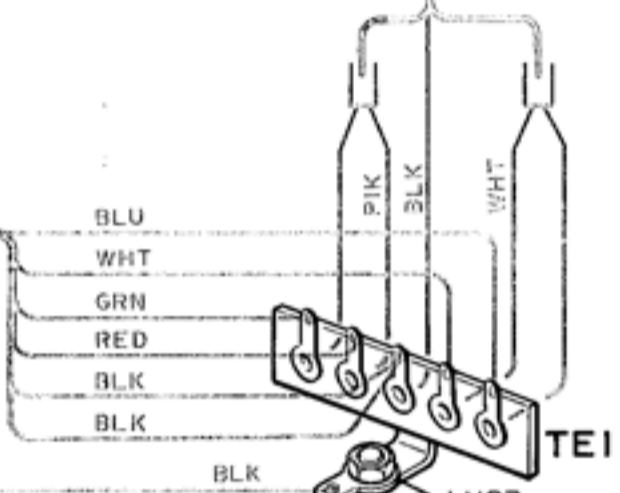
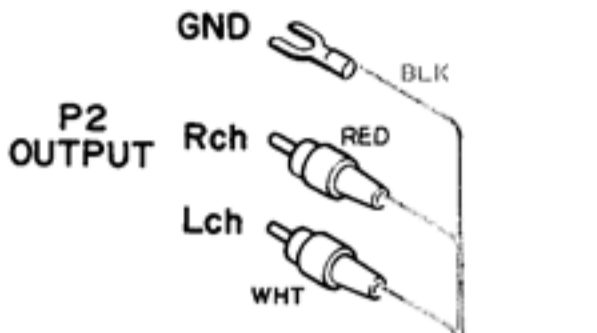
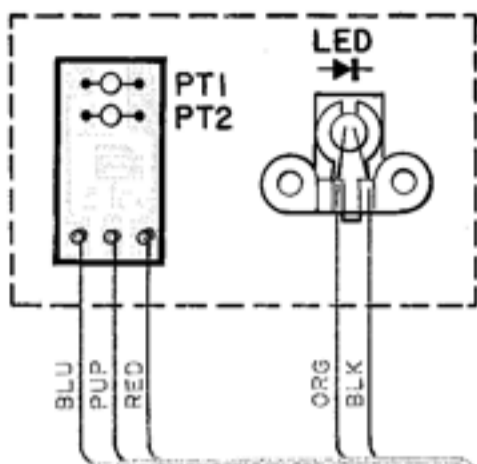
7



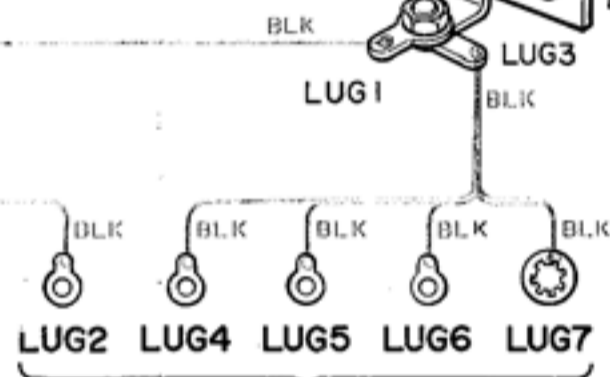
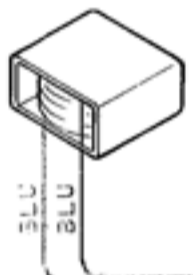
1. ALL RESISTANCES VALUES ARE IN  $\Omega$ .  
k $\Omega$  = 1000 $\Omega$ , M $\Omega$  = 1000k $\Omega$
2. THE WATTAGE OF RESISTORS IS 1/4W, UNLESS OTHERWISE NOTED.
3. ALL CAPACITANCES VALUES ARE IN  $\mu$ F UNLESS OTHERWISE NOTED. P =  $\mu$  $\mu$ F
4. SAFETY-REQUIREMENTS COMPONENTS IN ACCORDANCE WITH PRESENT SAFETY REGULATIONS, THESE COMPONENTS MUST ONLY BE REPLACED BY ORIGINAL PARTS.



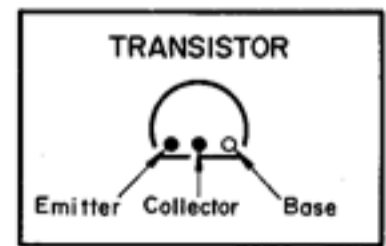
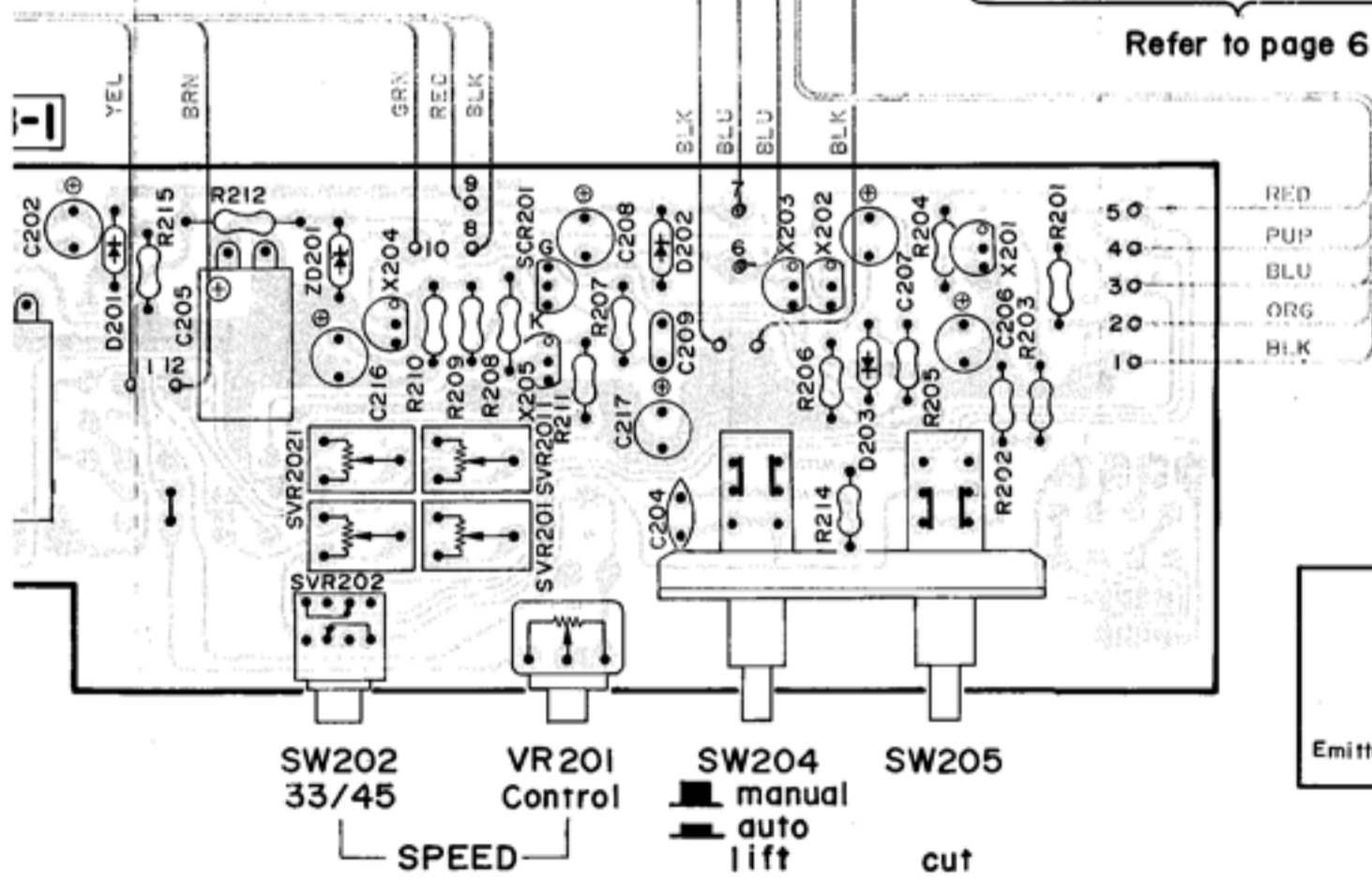
SEI  
AUTO-LIFT  
SENER ASSEMBLY



LI  
SOLENOID



Refer to page 6



- WIRE COLOR ABBREVIATIONS
- RED : Red
  - ORG : Orange
  - BLU : Blue
  - WHT : White
  - GRN : Green
  - BLK : Black
  - YEL : Yellow
  - PUP : Purple
  - PIK : Pink

