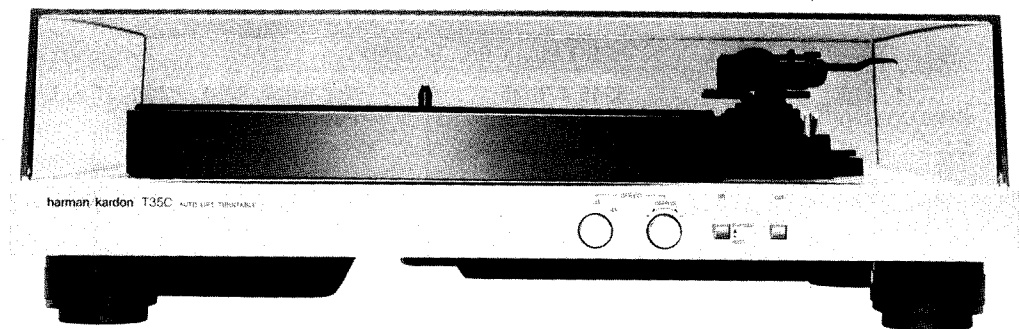


# The Harman Kardon Model T35C

Manual No.71B

## AUTO-LIFT TURNTABLE

# Technical Manual



### SUPPLEMENTARY MANUAL

THE MODEL T35C IS IDENTICAL TO THE MODEL T35 EXCEPT FOR AN ADDED CUT SWITCH AND OTHER PART CHANGES AS NOTED IN THIS SUPPLEMENT. REFER TO SERVICE MANUAL NO. 71A FOR ALL OTHER PARTS AND SERVICE INFORMATION.

**harman/kardon**  
240 CROSSWAYS PARK WEST, WOODBURY, N.Y. 11797  
1112-H15271B3 P-08849 1650 PRINTED IN JAPAN

T35C

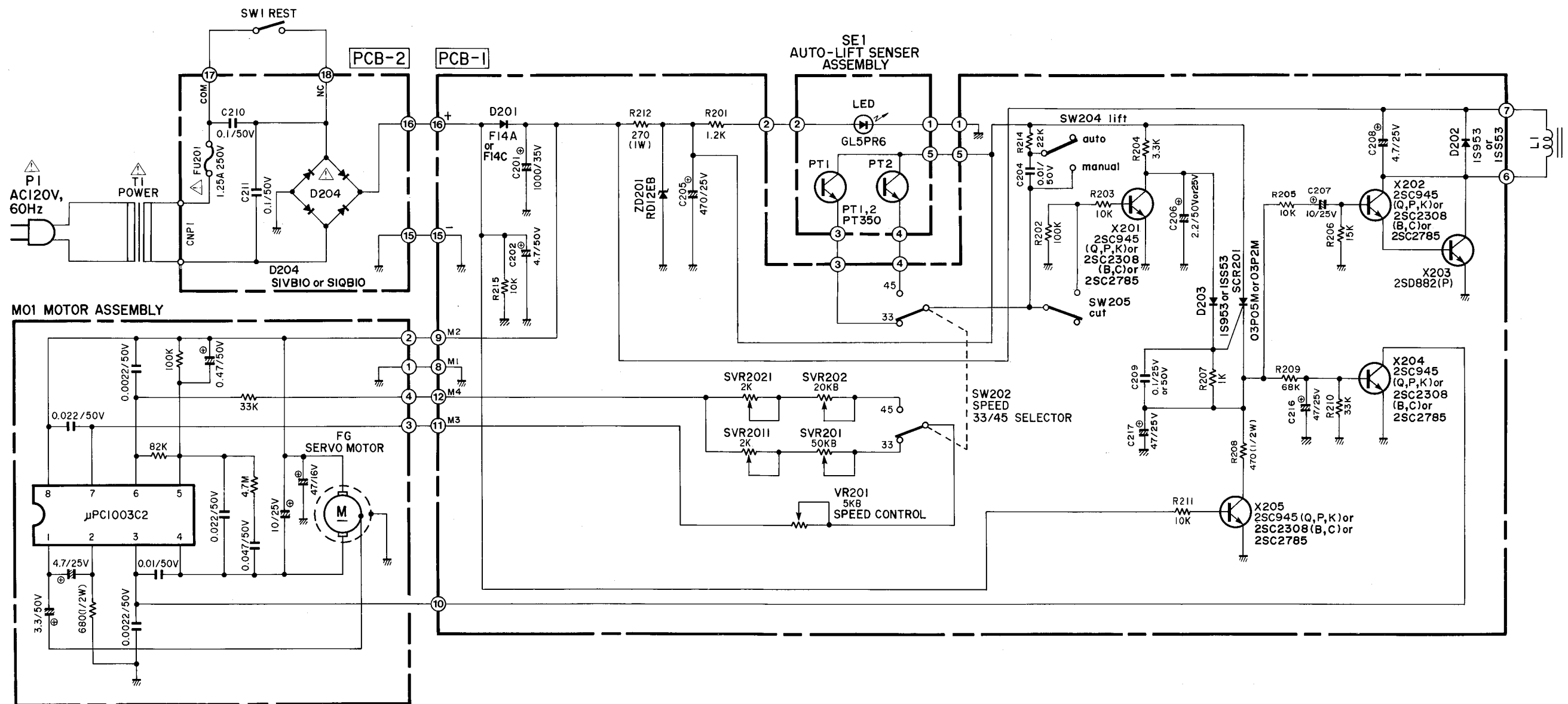
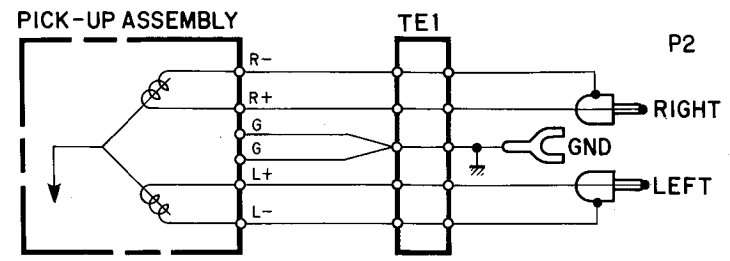
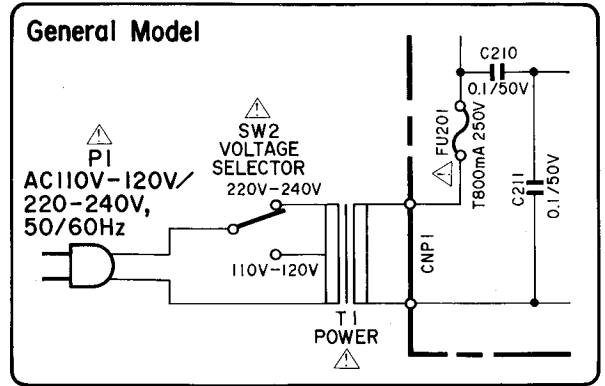
## GENERAL UNIT PARTS LIST

Ref. No.	Part No.	Description
1	A415-T35CA A415-T35CB	Cabinet Assembly (for U.S.A. & Canada models) Cabinet Assembly (for General model)
2	A443-T35C	Front Panel Assembly
23	914901-2	Foot
39	874045	Bracket

## ELECTRICAL PARTS LIST

Ref. No.	Part No.	Description
<b>CHASSIS MISCELLANEOUS</b>		
P2	871474	Output Cord Assembly (for U.S.A. & Canada models)
SW1	915021-1	Micro-Switch, Rest
LUG2	914359-4	Lug Terminal with Lead Wire
<b>PCB-1 MAIN P.C. BOARD</b>		
C216, 217	5345-476-25	Capacitor, 47 $\mu$ F, $\pm$ 20%, 25V, Electrolytic
SW204/205	915370	Push Switch, Lift, Cut

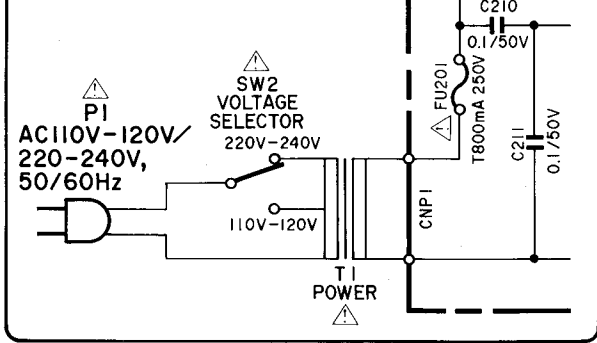
**SCHEMATIC DIAGRAM**



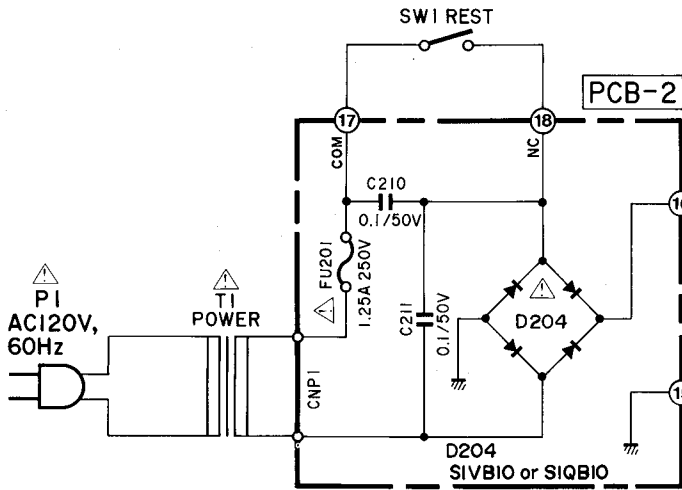
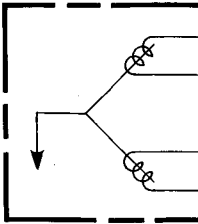
1. ALL RESISTANCES VALUES ARE IN Ω.  
kΩ = 1000Ω, MΩ = 1000kΩ
2. THE WATTAGE OF RESISTORS IS 1/4W, UNLESS OTHERWISE NOTED.
3. ALL CAPACITANCES VALUES ARE IN μF UNLESS OTHERWISE NOTED. P = μμF
4. ⚠ SAFETY-REQUIREMENTS COMPONENTS IN ACCORDANCE WITH PRESENT SAFETY REGULATIONS, THESE COMPONENTS MUST ONLY BE REPLACED BY ORIGINAL PARTS.

**SCHEMATIC DIAGRAM**

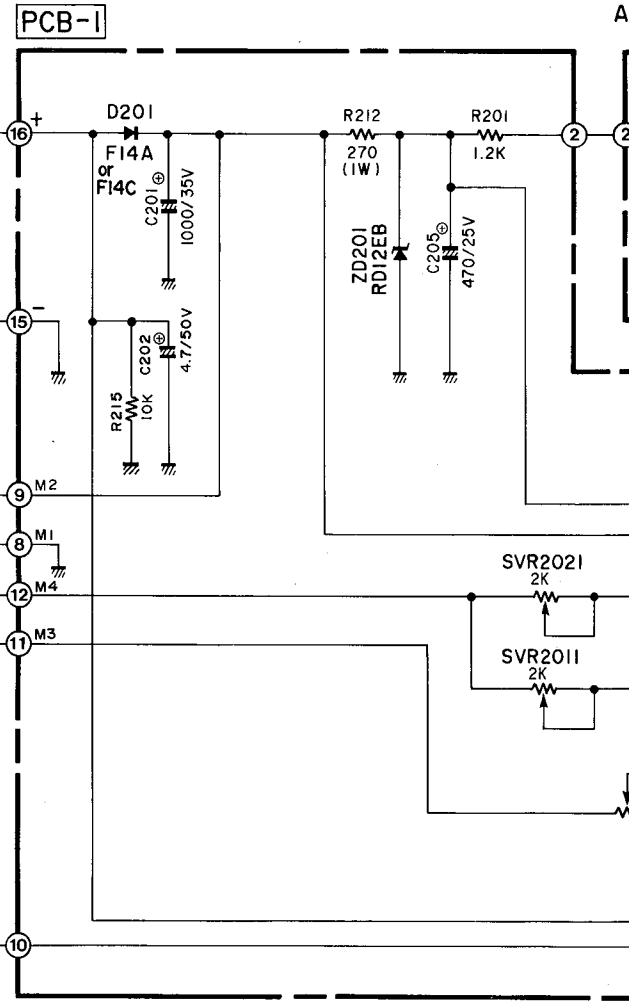
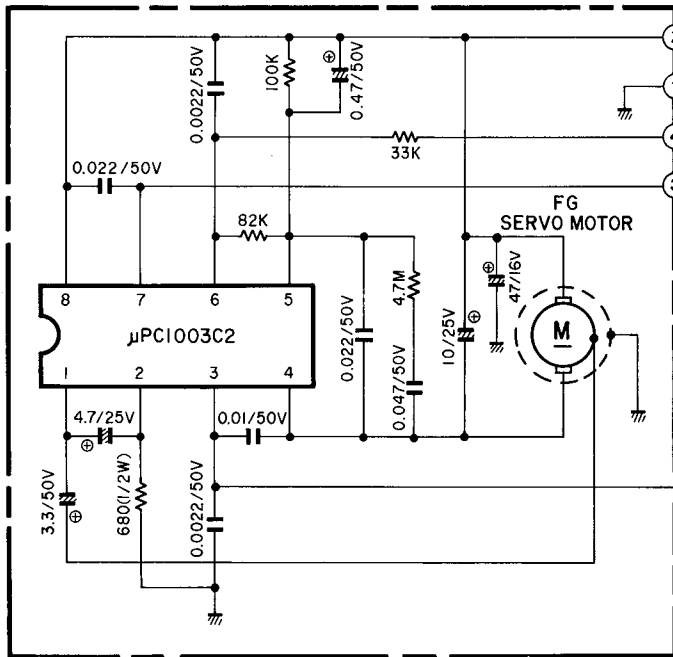
**General Model**



**PICK-UP ASSEMBLY**



**M01 MOTOR ASSEMBLY**



1

2

3

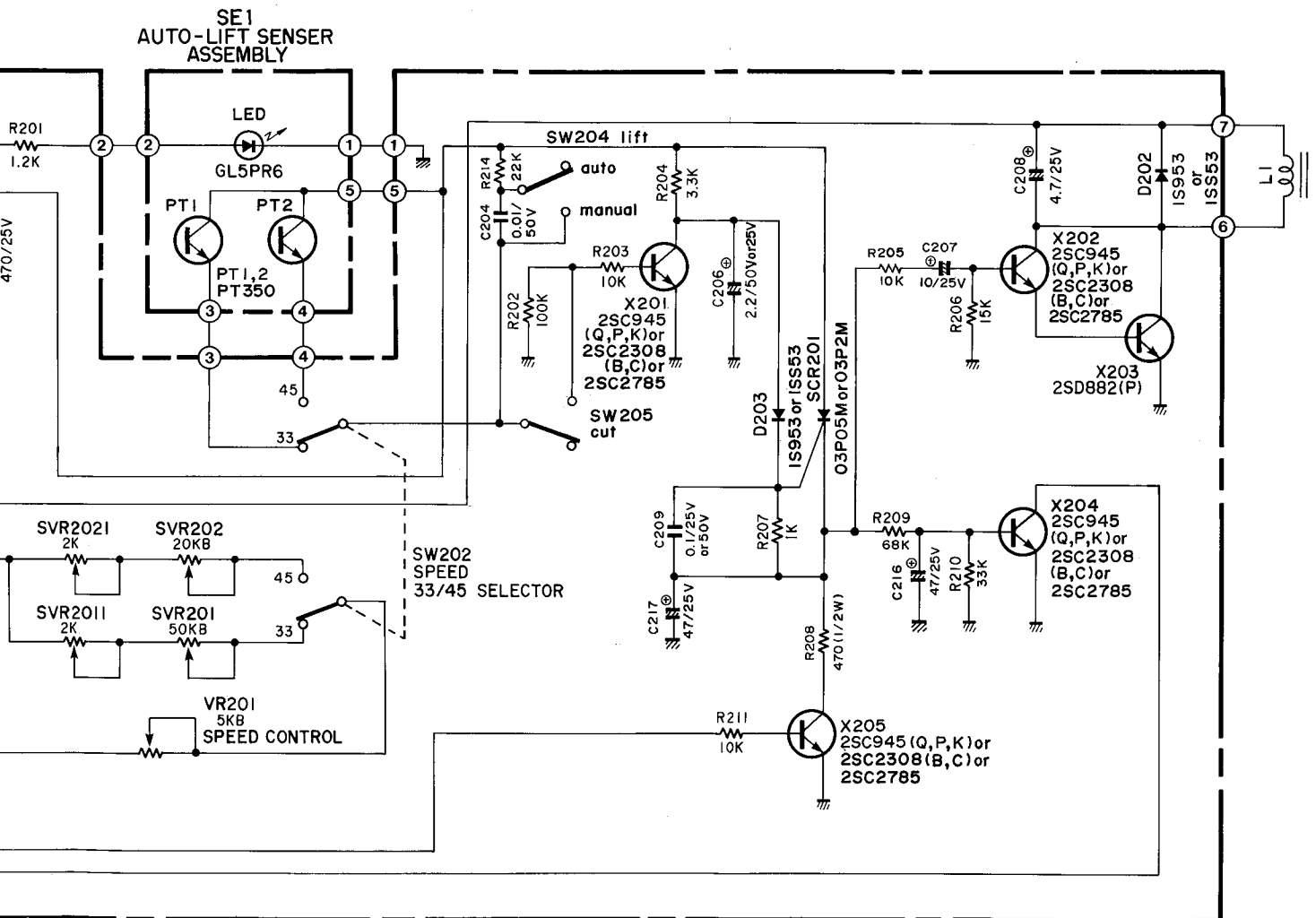
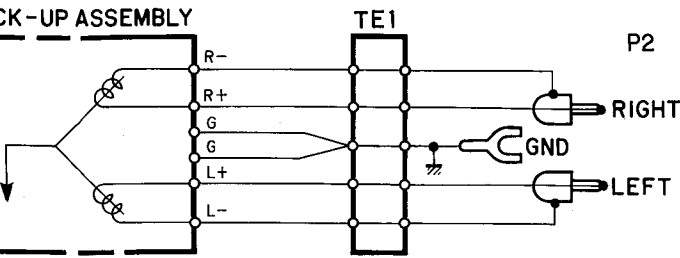
4

5

6

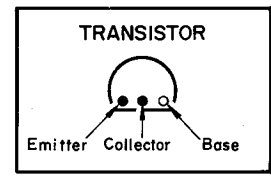
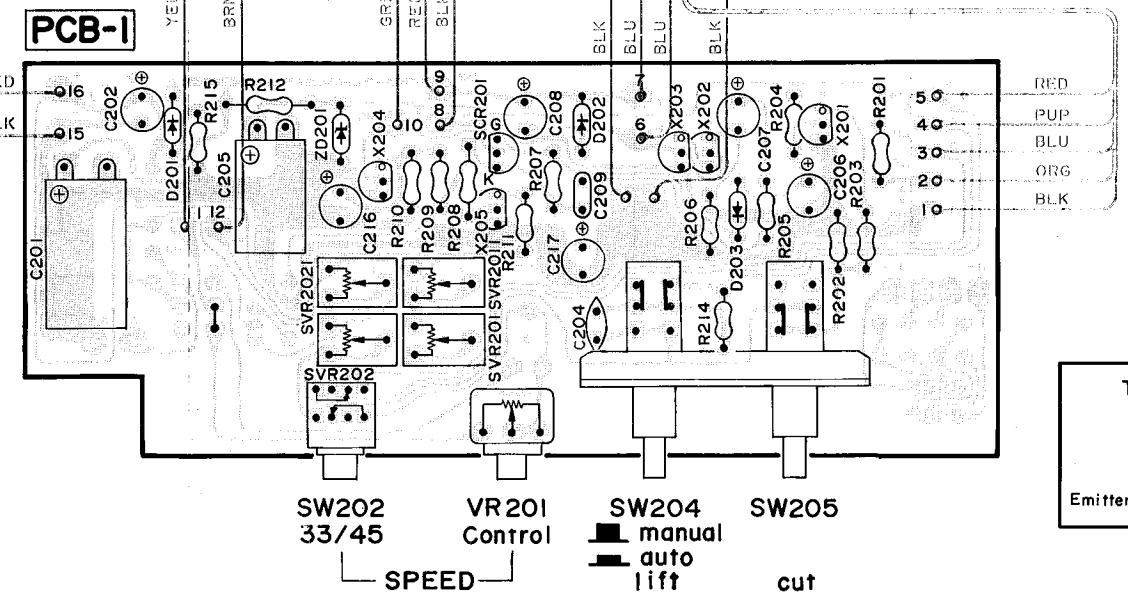
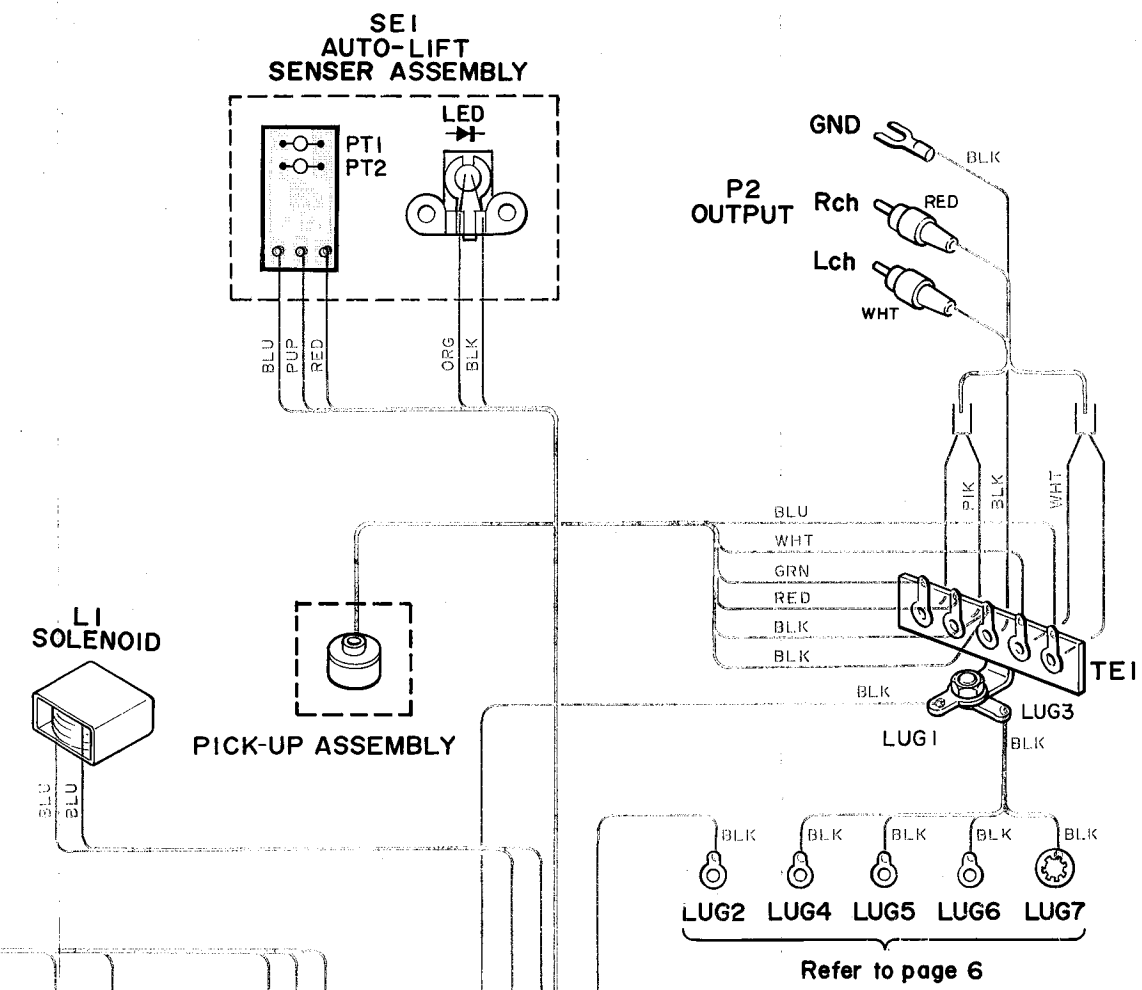
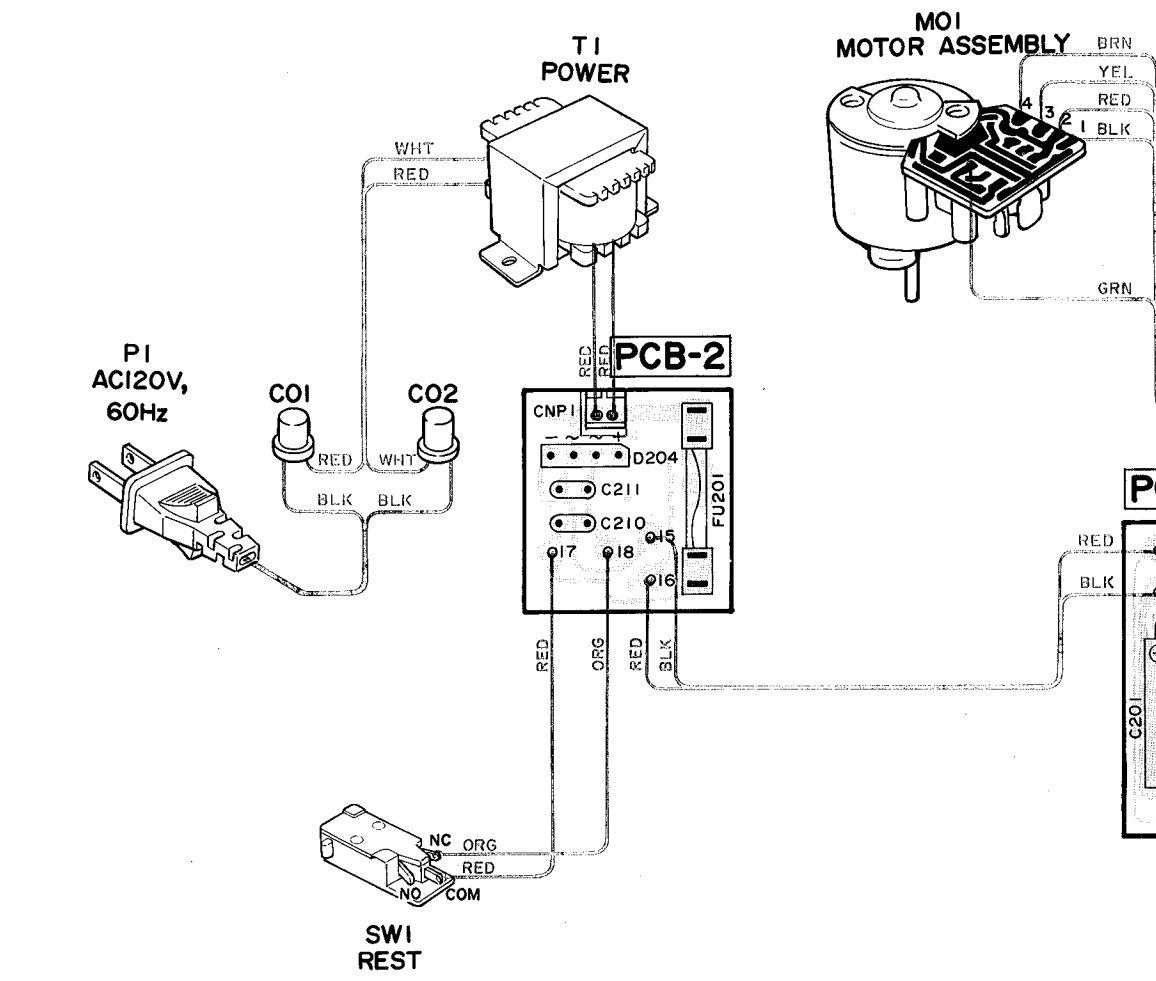
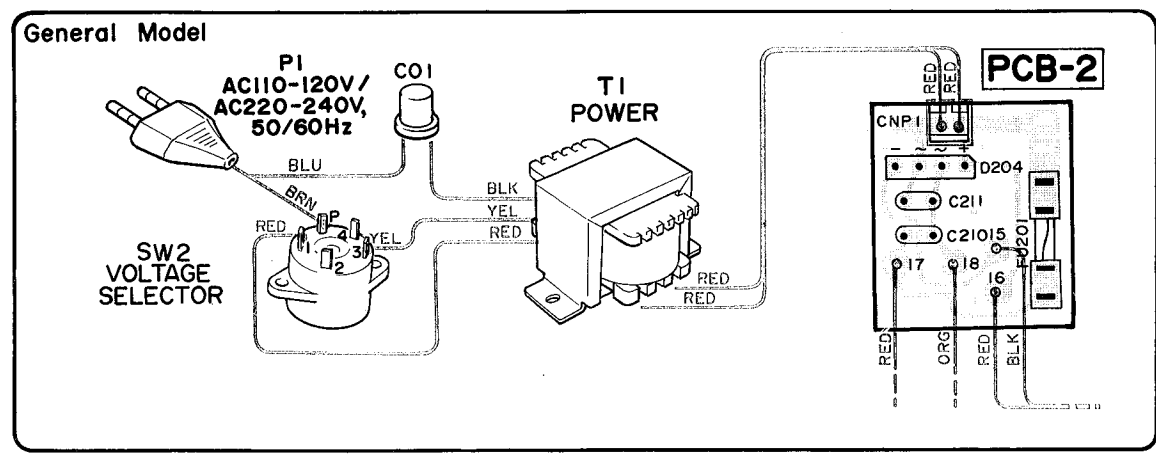
7

E	F	G	H	I	J
---	---	---	---	---	---



1. ALL RESISTANCES VALUES ARE IN  $\Omega$ .  
k $\Omega$  = 1000 $\Omega$ , M $\Omega$  = 1000k $\Omega$
2. THE WATTAGE OF RESISTORS IS 1/4W, UNLESS OTHERWISE NOTED.
3. ALL CAPACITANCES VALUES ARE IN  $\mu$ F UNLESS OTHERWISE NOTED. P =  $\mu$ F
4. SAFETY-REQUIREMENTS COMPONENTS IN ACCORDANCE WITH PRESENT SAFETY REGULATIONS, THESE COMPONENTS MUST ONLY BE REPLACED BY ORIGINAL PARTS.

WIRING DIAGRAM

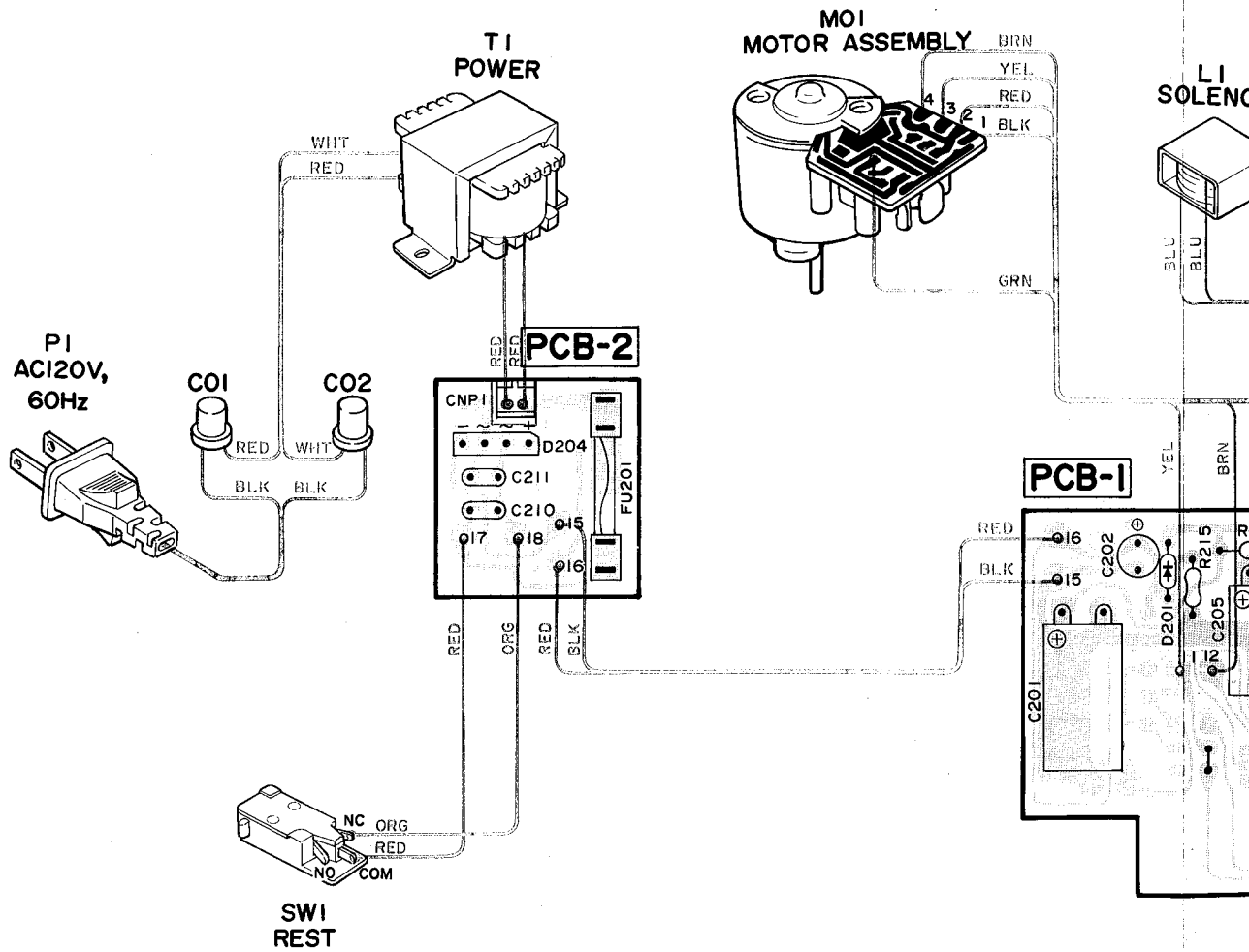
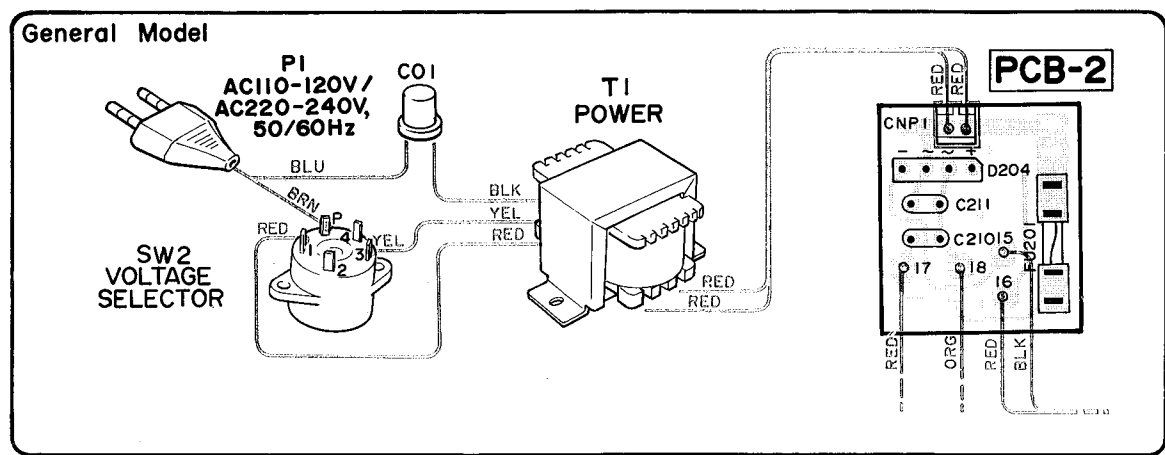


PIN CONNECTION DIAGRAM OF TRANSISTORS AND DIODES.

2SC945(Q) or (P) or (K)	2SD882(P)	GL5PR6	PT350	F14A	1S953, RD12EB3	S1VB10
E C B	E C B	Cathode Anode	C E	Anode Cathode	Anode Cathode	+

- WIRE COLOR ABBREVIATIONS
- RED : Red
  - ORG : Orange
  - BLU : Blue
  - WHT : White
  - GRN : Green
  - BLK : Black
  - YEL : Yellow
  - PUP : Purple
  - PIK : Pink

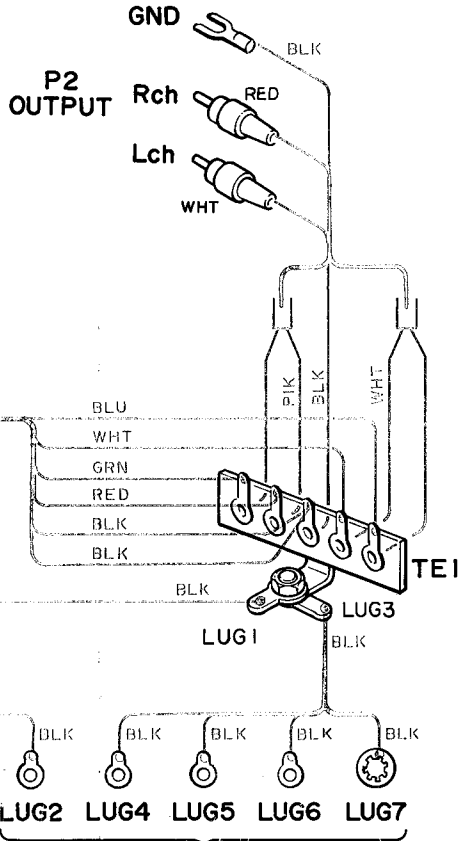
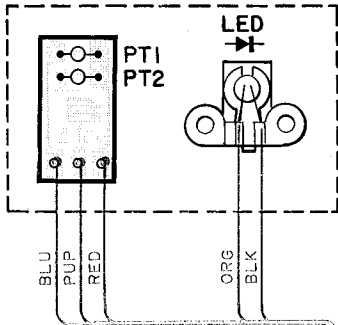
WIRING DIAGRAM



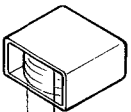
PIN CONNECTION DIAGRAM OF TRANSISTORS AND DIODES.

<p>2SC945(Q) or (P) or (K)</p>	<p>2SD882(P)</p>	<p>GL5PR6</p> <p>Cathode</p> <p>Anode</p>	<p>PT350</p>	<p>F14A</p> <p>Anode</p> <p>Cathode</p>	<p>1S953, RD12EB3</p> <p>Anode</p> <p>Cathode</p>	<p>S1VB10</p>
------------------------------------	------------------	---	--------------	---	---	---------------

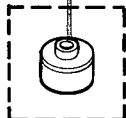
**SE1  
AUTO-LIFT  
SENER ASSEMBLY**



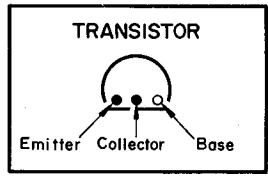
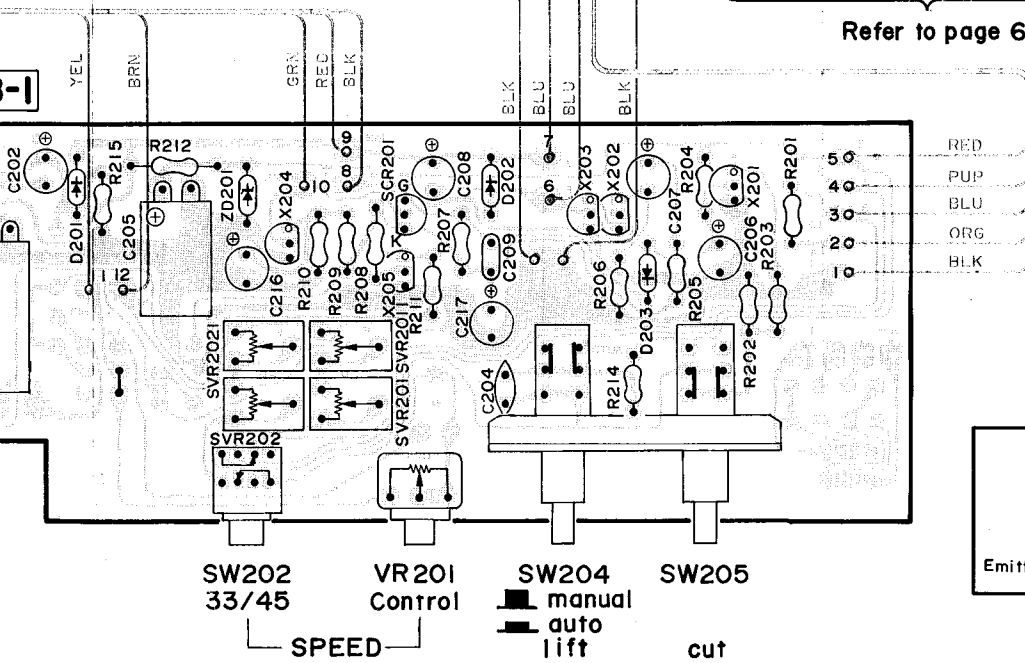
**LI  
SOLENOID**



**PICK-UP ASSEMBLY**



Refer to page 6



- WIRE COLOR ABBREVIATIONS**
- RED : Red
  - ORG : Orange
  - BLU : Blue
  - WHT : White
  - GRN : Green
  - BLK : Black
  - YEL : Yellow
  - PUP : Purple
  - PIK : Pink