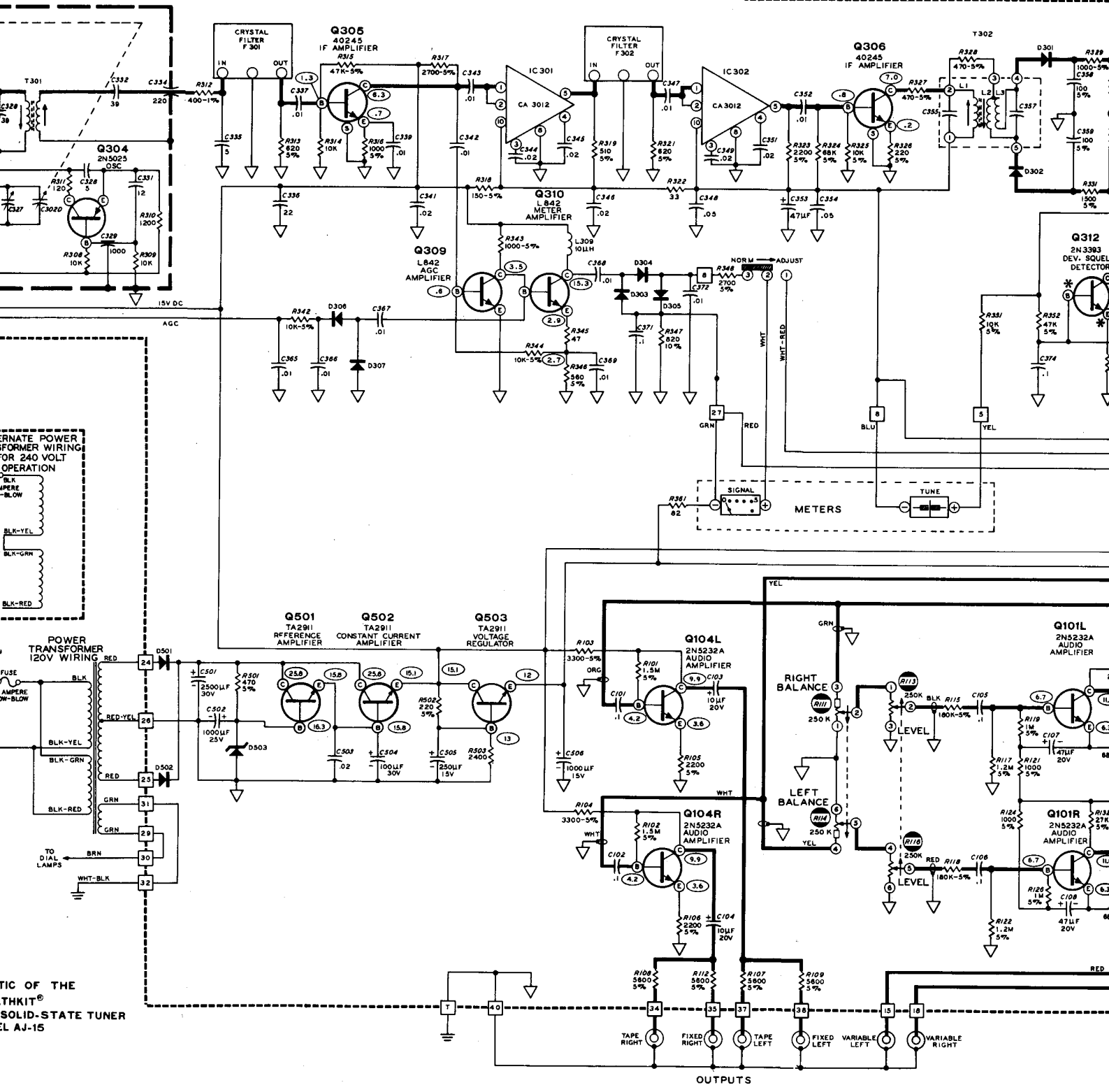


FM CIRCUIT BOARD



ALTERNATE POWER TRANSFORMER WIRING FOR 240 VOLT OPERATION

BLK-AMPERE
-BLW

BLK-YEL

BLK-GRN

BLK-RED

POWER TRANSFORMER 120V WIRING

FUSE AMPERE -BLW

RED-YEL 28

BLK-YEL 26

RED 25

BLK-GRN 31

GRN 29

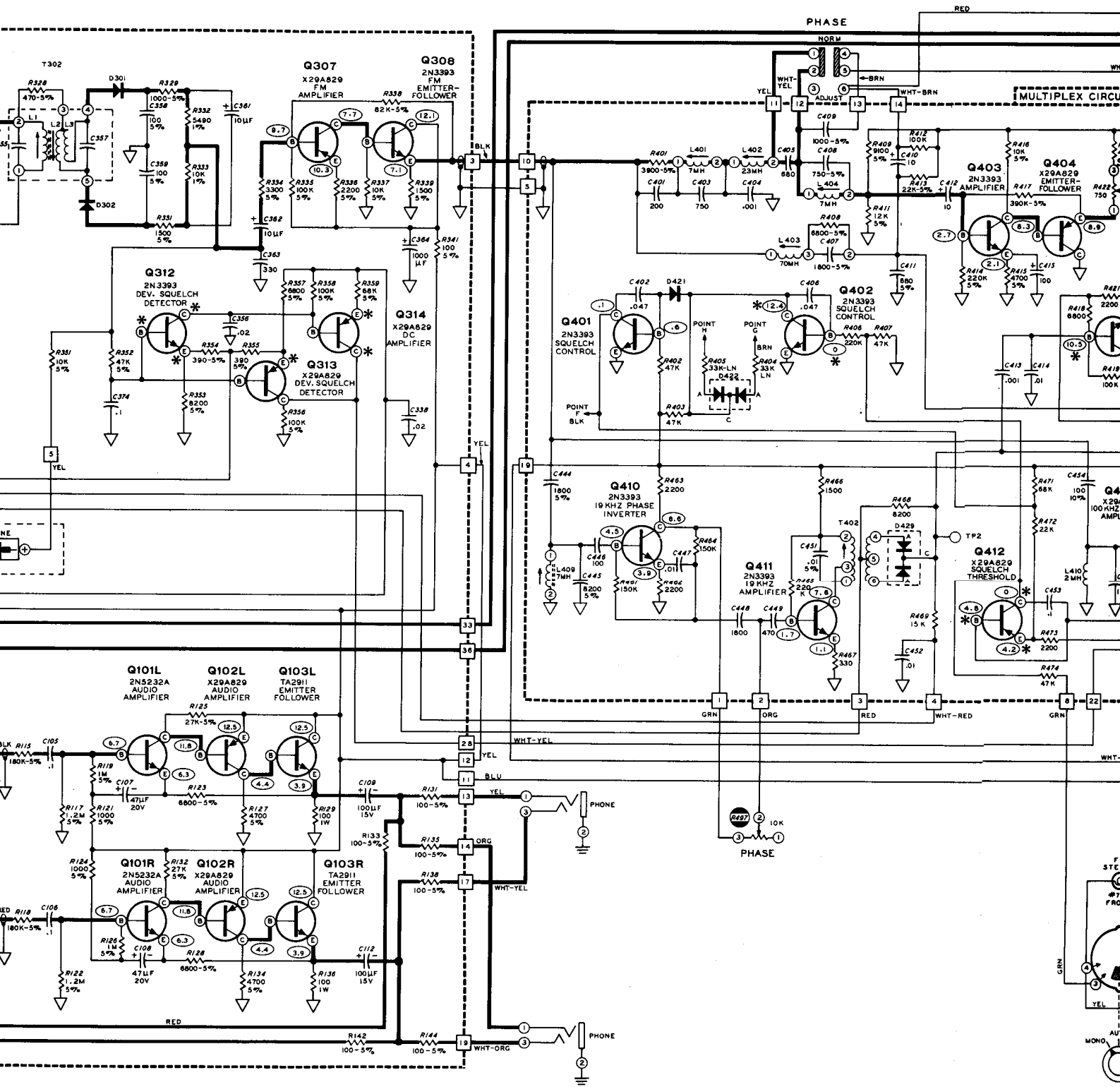
BRN 30

WHT-BLK 32

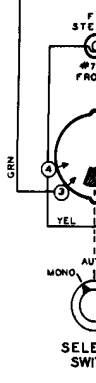
TO DIAL LAMPS

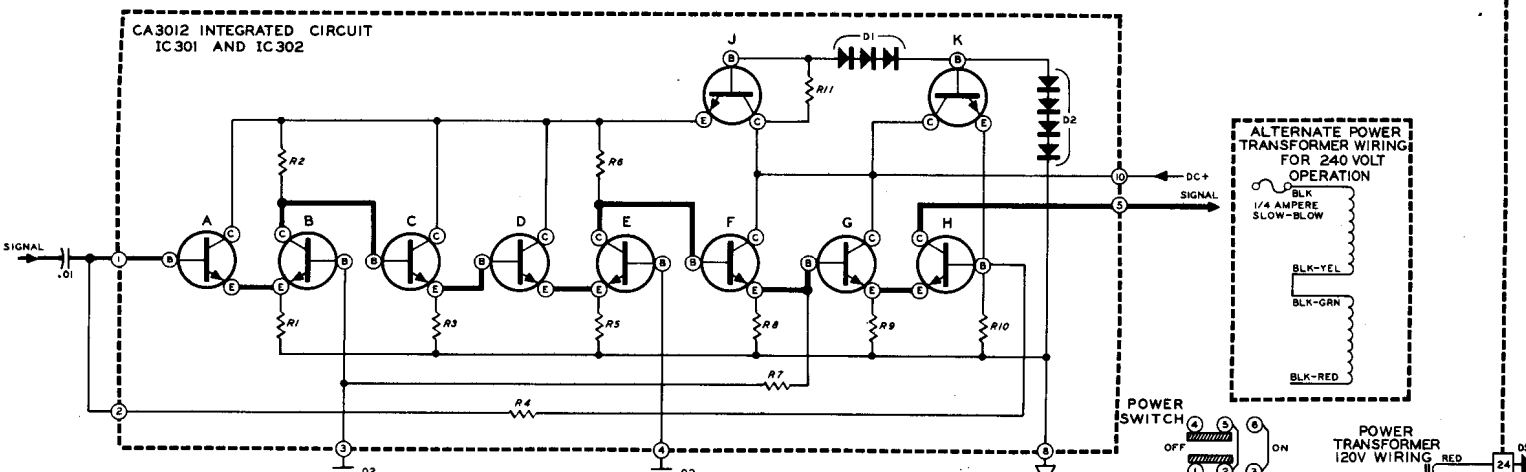
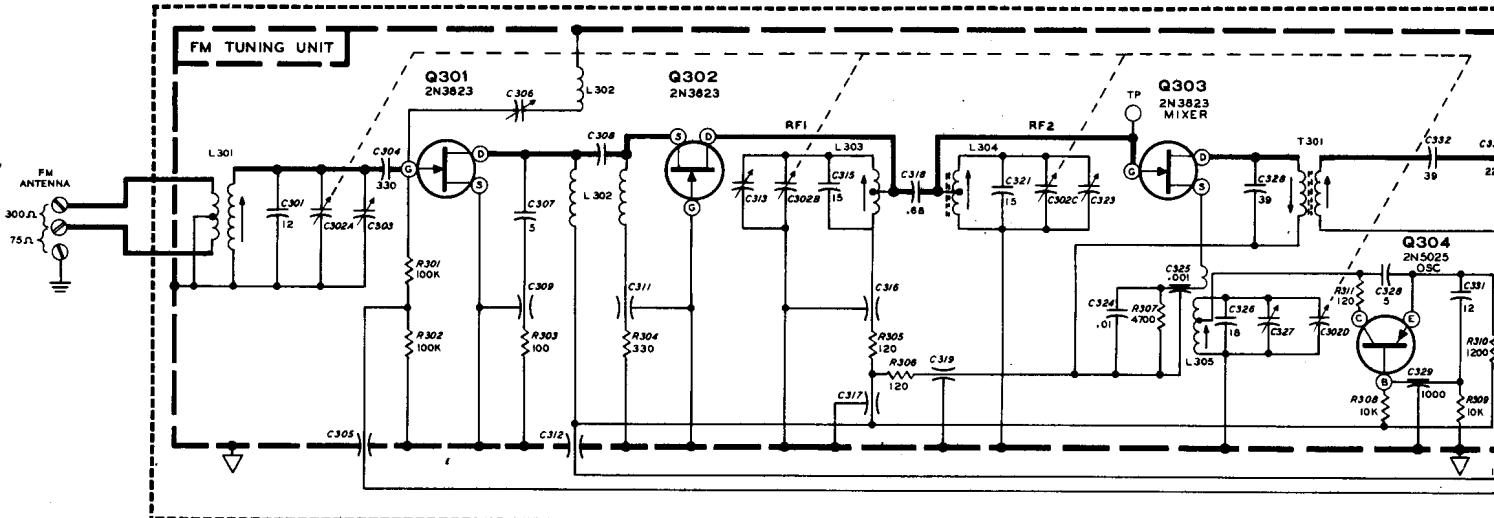
PART OF THE
THKIT®
SOLID-STATE TUNER
AJ-15

OUTPUTS



VARIABLE
RIGHT





NOTES

1. RESISTOR, CAPACITOR, AND COMPONENT NUMBERS ARE IN THE FOLLOWING GROUPS:
 100-199 PARTS IN AUDIO CIRCUIT.
 300-399 PARTS IN FM TUNER CIRCUIT.
 400-499 PARTS IN MULTIPLEX CIRCUIT.
 500-599 PARTS IN POWER SUPPLY CIRCUIT.
2. REFER TO THE CHASSIS PHOTOGRAPH AND CIRCUIT BOARD X-RAY VIEWS FOR THE PHYSICAL LOCATION OF PARTS.
3. RESISTORS, CAPACITORS, AND COMPONENTS IN THE AUDIO CIRCUIT (100-199) ARE DIVIDED AS FOLLOWS:
 ODD NUMBERS ARE IN THE LEFT CHANNEL
 EVEN NUMBERS ARE IN THE RIGHT CHANNEL
4. ALL RESISTORS ARE 1/2 WATT UNLESS MARKED OTHERWISE. RESISTOR VALUES ARE IN OHMS (K=1000, M=1,000,000).
5. CAPACITOR VALUES LESS THAN 1 ARE IN pF. VALUES OF 1 AND ABOVE ARE IN PF-(PICOFARADS) UNLESS MARKED OTHERWISE.
6. SOURCE SWITCH IS SHOWN IN FULL COUNTERCLOCKWISE POSITION AS VIEWED FROM KNOB END OF THE SHAFT.
7. ARROWS ON CONTROLS SHOW CLOCKWISE ROTATION, VIEWED FROM KNOB END OF THE SHAFT.
8. | | INDICATES A COLOR CODED SHIELDED CABLE.
9. □ THIS SYMBOL INDICATES THE NUMBER CONNECTIONS ON THE CIRCUIT BOARDS.
10. DC VOLTAGE MEASUREMENTS ARE TAKEN WITH AN 11 MEGOHM INPUT VOLTMETER, FROM THE POINT INDICATED TO CHASSIS GROUND. VOLTAGES MAY VARY ±20%. LINE VOLTAGE 120 VAC.
11. (⊥) THIS SYMBOL DENOTES THE GROUND FOIL OF A CIRCUIT BOARD. (⊥) THIS SYMBOL DENOTES THE CHASSIS GROUND.)
12. ○ THIS SYMBOL INDICATES A POSITIVE DC VOLTAGE MEASUREMENT, TAKEN UNDER THE FOLLOWING CONDITIONS:
 SOURCE SWITCH..... MONO
 SQUELCH CONTROL..... FULLY COUNTER CLOCKWISE
 STEREO THRESHOLD..... MINIMUM
 ANTENNA NOT CONNECTED
13. ⊖ THIS SYMBOL AROUND A PART NUMBER INDICATES THAT THIS PART IS MOUNTED ON THE CHASSIS. EVEN WHEN ITS POSITION ON THE SCHEMATIC SUGGESTS ANOTHER LOCATION.
14. * AN ASTERISK INDICATES THAT A VOLTAGE MEASUREMENT CAN BE MADE UNDER CONDITIONS OTHER THAN THOSE INDICATED BY ○. SEE THE CIRCUIT BOARD VOLTAGE X-RAY VIEWS FOR THESE CONDITIONS AND VOLTAGES.

SCHEMATIC OF THE HEATHKIT® FM-FM STEREO SOLID-STATE TUNER MODEL AJ-15

