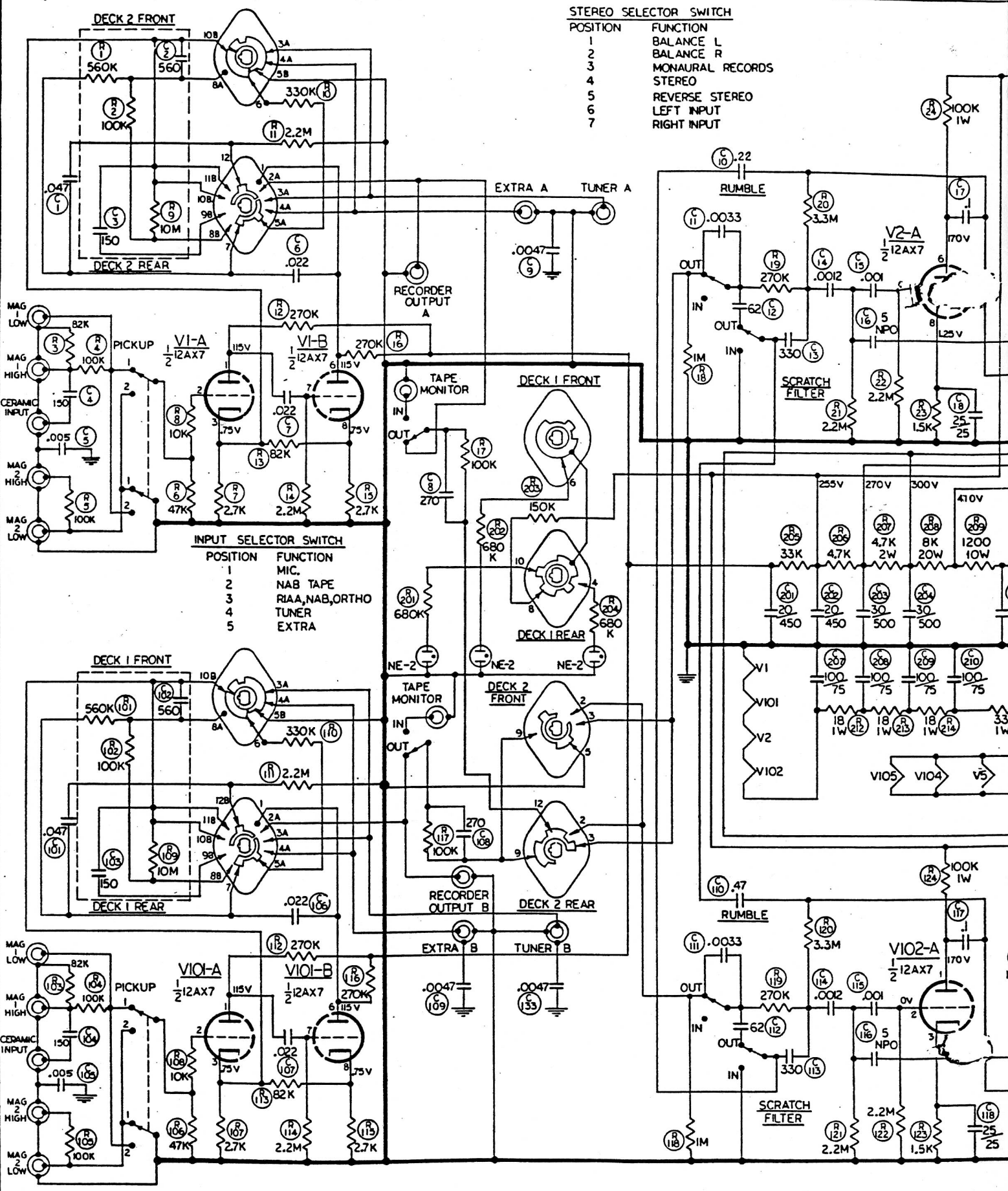


STEREO SELECTOR SWITCH

POSITION	FUNCTION
1	BALANCE L
2	BALANCE R
3	MONAURAL RECORDS
4	STEREO
5	REVERSE STEREO
6	LEFT INPUT
7	RIGHT INPUT

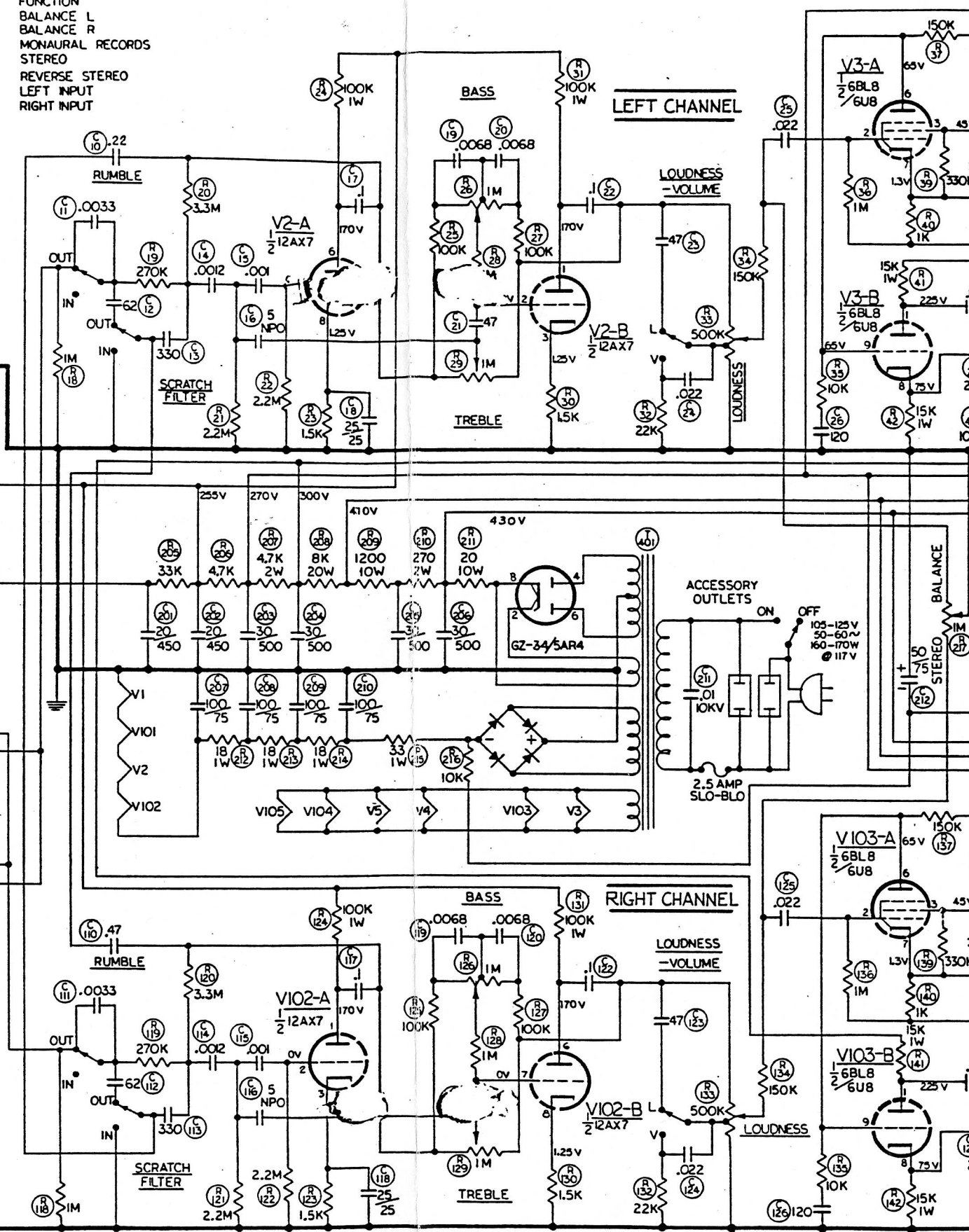
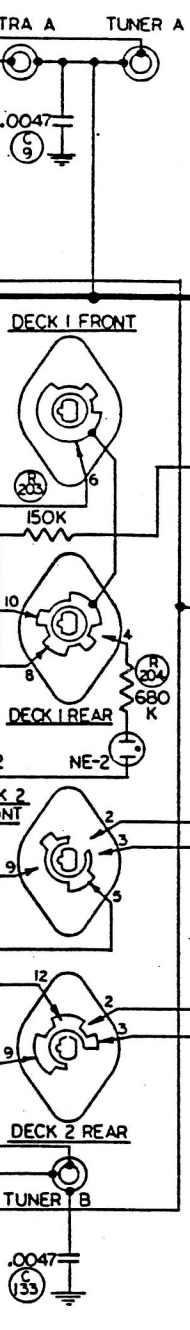


INPUT SELECTOR SWITCH

POSITION	FUNCTION
1	MIC.
2	NAB TAPE
3	RIAA, NAB, ORTHO
4	TUNER
5	EXTRA

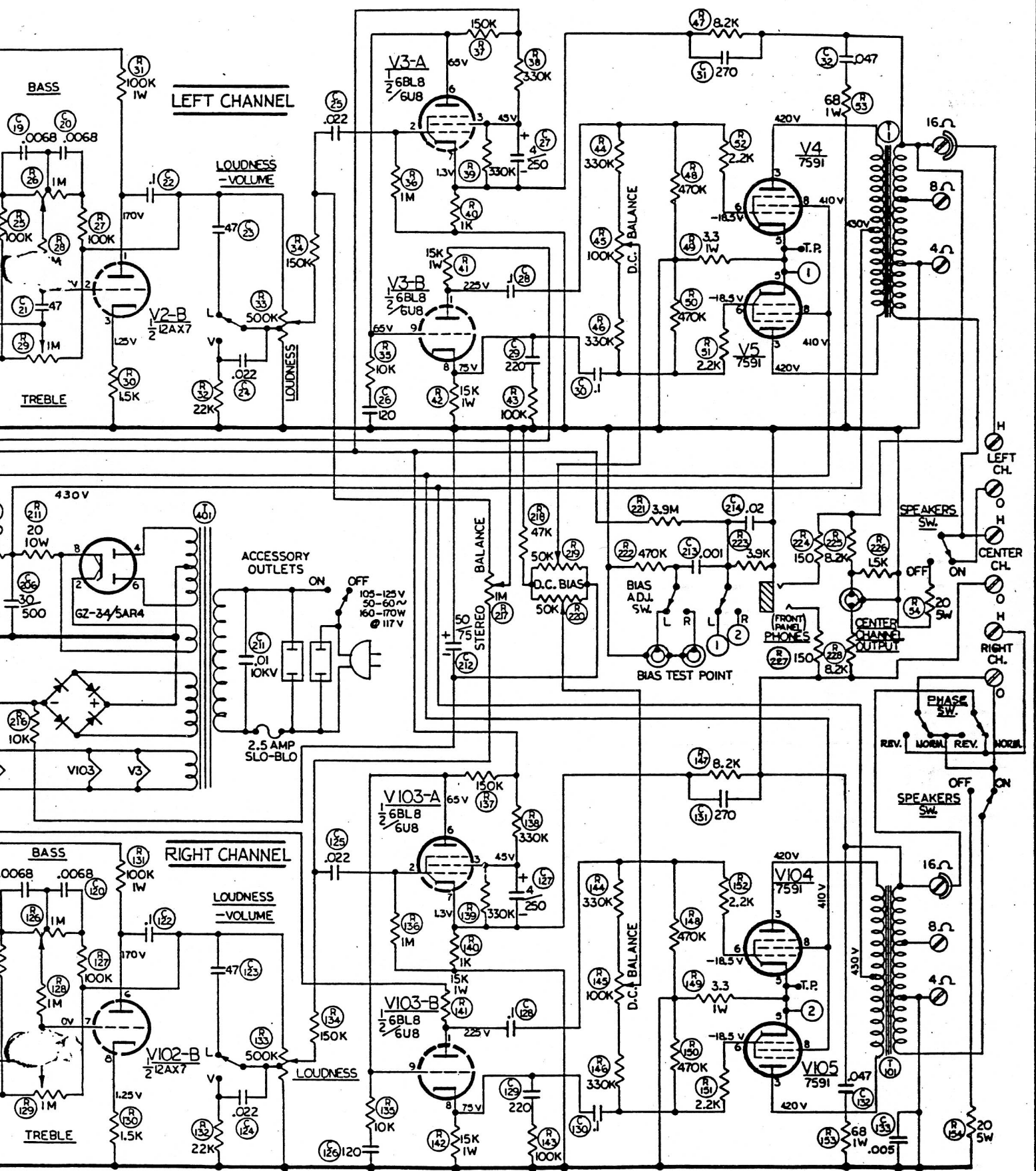
STEREO SELECTOR SWITCH

POSITION	FUNCTION
1	BALANCE L
2	BALANCE R
3	MONAURAL RECORDS
4	STEREO
5	REVERSE STEREO
6	LEFT INPUT
7	RIGHT INPUT



THE FOLLOWING CONTROLS IN CHANNEL "A" ARE MECHANICALLY GANGED WITH IDENTICAL CONTROLS IN CHANNEL "B"

1-INPUT SELECTOR	5-COMPENSATOR
2-PICKUP AND TAPE	6-LOUDNESS AND POWER SW.
3-SCRATCH FILTER	7-SPEAKERS SWITCH
4-RUMBLE FILTER	

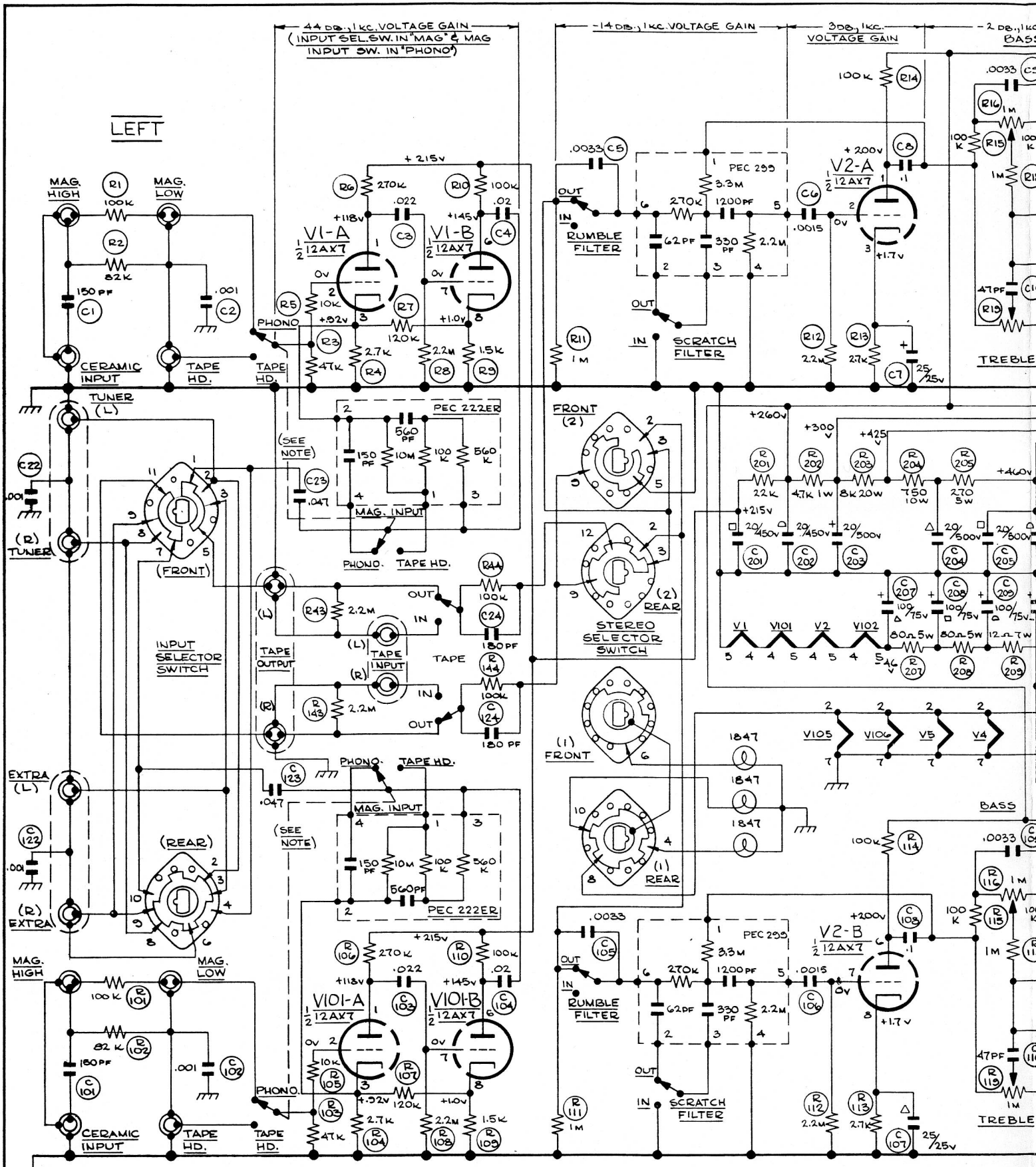


THE FOLLOWING CONTROLS IN CHANNEL "A" ARE MECHANICALLY GANGED WITH IDENTICAL CONTROLS IN CHANNEL "B"

- 1-INPUT SELECTOR
- 2-PICKUP AND TAPE
- 3-SCRATCH FILTER
- 4-RUMBLE FILTER
- 5-COMPENSATOR
- 6-LOUDNESS AND POWER SW.
- 7-SPEAKERS SWITCH

TYPE 299D STEREO AMPLIFIER

SCALE: —		CIRCUIT DIAGRAM		C/23/EC3	
H. H. SCOTT, INC. MAYNARD, MASS., U. S. A.					
DR. A. P. RAMOS	ENG. <i>Lut</i>	DWG. NO. D-299D-C1		SUB. 0	
CH.	PROD.				



INPUT SELECTOR SWITCH

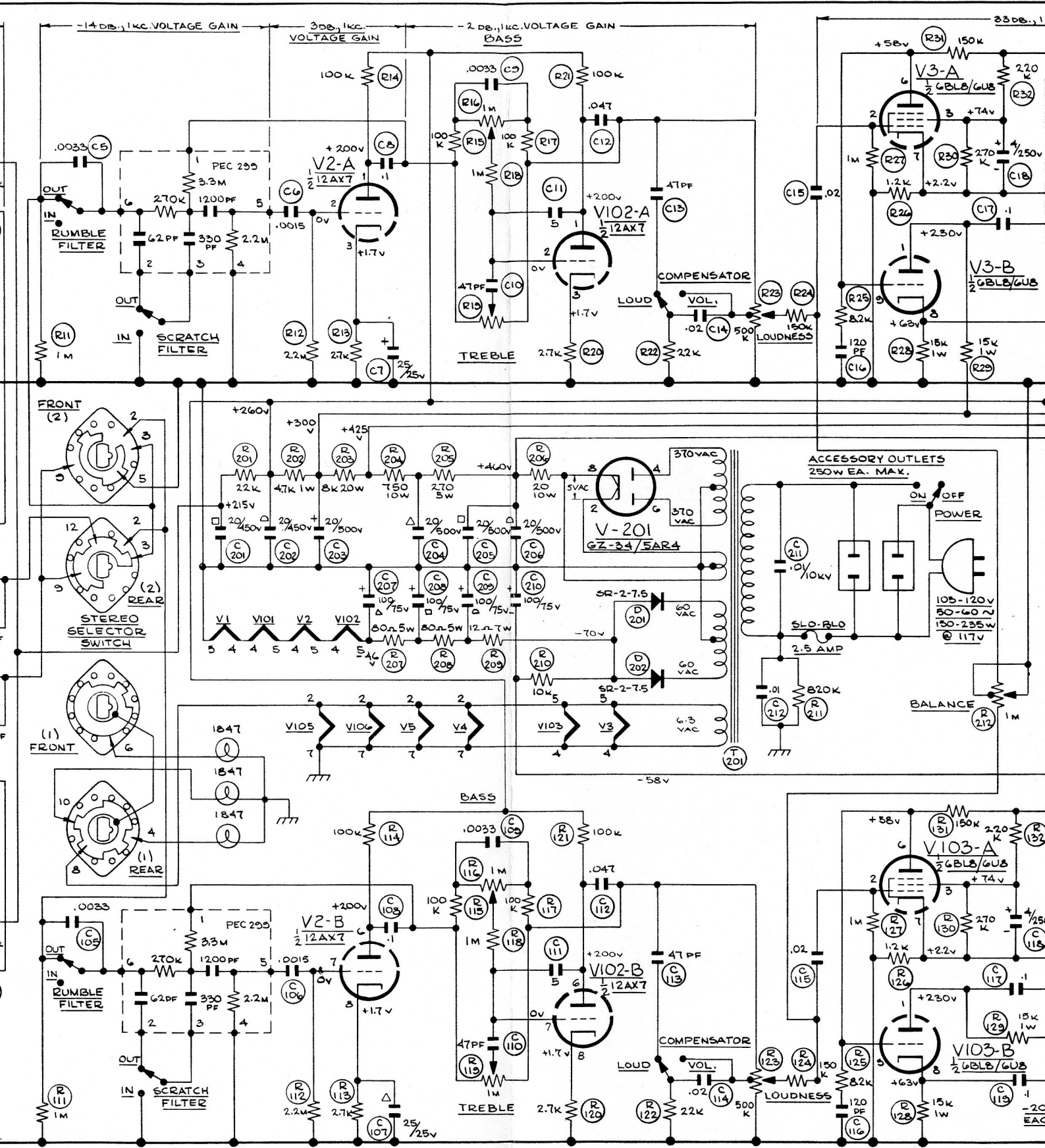
POSITION	FUNCTION
1.	MAG. INPUT
2.	TUNER
3.	EXTRA

STEREO SELECTOR SWITCH

POSITION	FUNCTION
1.	BAL. L.
2.	BAL. R.
3.	MONO.
4.	STEREO
5.	REV. STEREO
6.	L. INPUT
7.	R. INPUT

HIGHEST SERIES NUMBER

C 24	C124	C21
—	—	D20
R 247	R147	R21
T 1	T101	T20



STEREO SELECTOR SWITCH

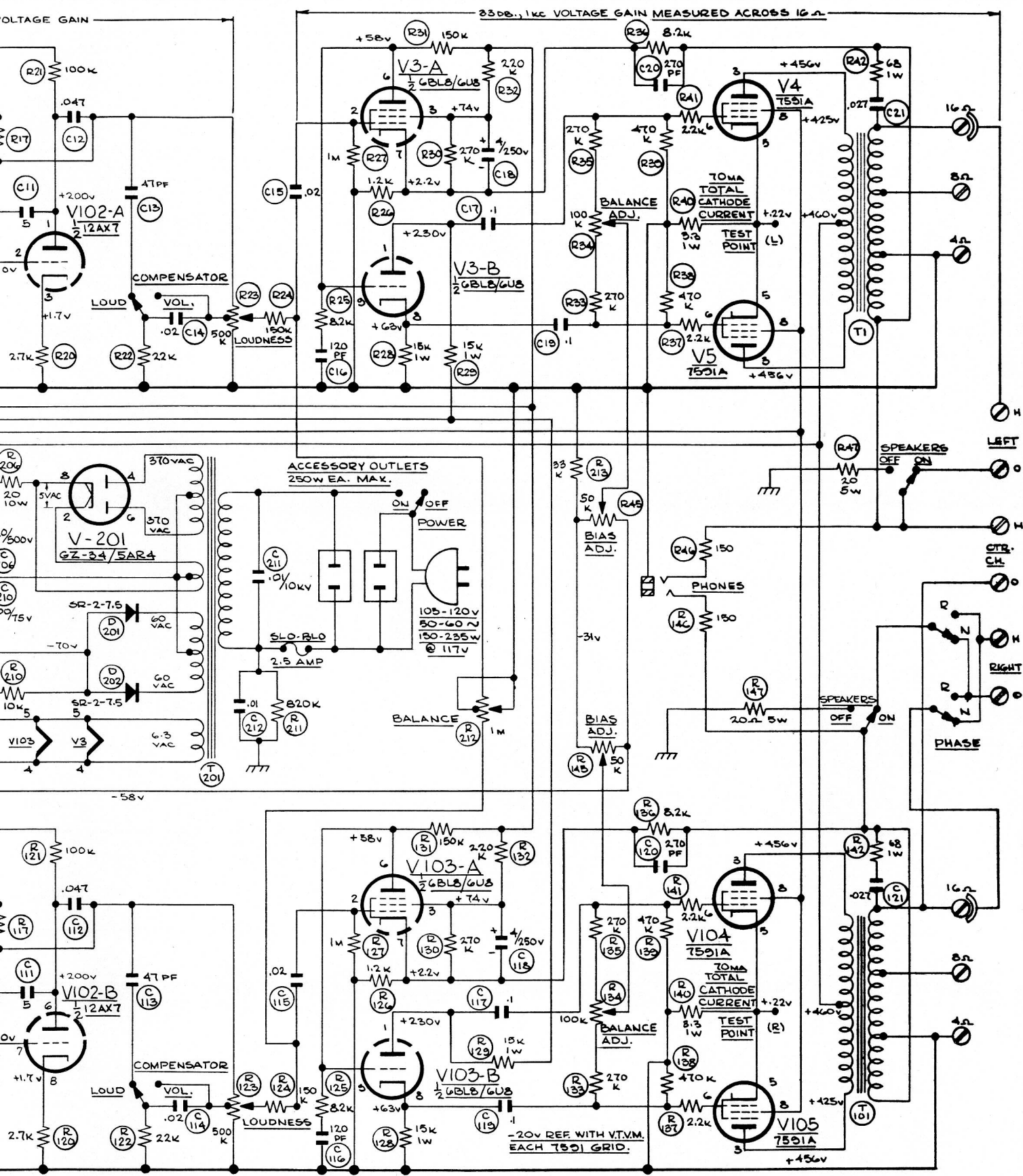
POSITION	FUNCTION
1.	BAL. L.
2.	BAL. R.
3.	MONO.
4.	STEREO
5.	REV. STEREO
6.	L. INPUT
7.	R. INPUT

HIGHEST SERIES NUMBERS

C 24	C124	C212
D202	R147	R213
T 1	T101	T201

NOTE:
 THE FOLLOWING CONTROLS IN LEFT CHANNEL ARE MECHANICALLY GANGED WITH IDENTICAL CONTROLS IN RIGHT CHANNEL:
 1. INPUT SELECTOR
 2. LOUDNESS
 3. MAG. INPUT
 4. TAPE
 5. RUMBLE FILTER
 6. SCRATCH FILTER
 7. SPEAKERS
 8. COMPENSATOR

UNLESS OTHERWISE SPECIFIED:
 1. RESISTORS IN OHMS
 2. CAPACITORS IN MICROFARADS
 3. VOLTS D.C.
 4. GAINS ± 20 DB
 5. 117 V LINE
 6. 117 V LINE



33DB., 1KC VOLTAGE GAIN MEASURED ACROSS 16 Ω

REV 299D-C1 0

SER. NO. 249T80 & ABOVE

NOTE:

THE FOLLOWING CONTROLS IN LEFT CHANNEL ARE MECHANICALLY GANGED WITH IDENTICAL CONTROLS IN RIGHT CHANNEL:
 1. INPUT SELECTOR
 2. LOUDNESS
 3. MAG. INPUT
 4. TAPE
 5. RUMBLE FILTER
 6. SCRATCH FILTER
 7. SPEAKERS
 8. COMPENSATOR

UNLESS SPECIFIED:
 1. RESISTORS IN OHMS & 1/2 WATT.
 2. CAPACITORS IN MFD.
 3. VOLTS D.C. ±15% MEASURED WITH 20KΩ/V V.O.M., NO SIGNAL & 117V LINE.
 4. GAINS ±2 DB. WITH ACVTVM.

DATE 3-C-64	H.H. SCOTT, INC. MAYNARD, MASS.	CIRCUIT DIAGRAM	REV 0
CH.			
ENG. F. G. L.	SCALE: —	DWG. SIZE D	299D-C1
PROD.	SHEET 1 OF 1		SER. NO. 249T80 & ABOVE