



REFERENCE CHART FOR CONTROL SETTINGS

USE THIS CHART AS A QUICK GUIDE TO OPERATING YOUR 348 SOLID STATE TUNER/AMPLIFIER.

	RUMBLE	SCRATCH	TAPE MONITOR	INPUT	SELECTOR	BASS	TREBLE	BALANCE	LOUDNESS	DYNAURAL MUTING	COMP	SPEAKERS
FM MONO OR STEREO	OUT	OUT	OUT	FM OR SUB. CH. FIL.	STEREO	0	0	0	OPTIONAL	OPTIONAL	LOUD	MAIN ON
PHONO	OUT	OUT	OUT	PHONO	STEREO*	0	0	0	OPTIONAL	NA**	LOUD	MAIN ON
TAPE DECK WITHOUT PLAYBACK ELECTRONICS	OUT	OUT	OUT	TAPE HEAD	STEREO*	0	0	0	OPTIONAL	NA**	LOUD	MAIN ON
TAPE RECORDER W/PLAYBACK ELECTRONICS	OUT	OUT	IN	NA**	STEREO*	0	0	0	OPTIONAL	NA**	LOUD	MAIN ON
OTHER	OUT	OUT	OUT	EXTRA	STEREO*	0	0	0	OPTIONAL	NA**	LOUD	MAIN ON

*If a monaural source is used, set SELECTOR switch to "L Input".

**Not applicable.

Note: Positions of the Rumble, Scratch, Bass, Treble, Balance, Dynaural/Muting, Comp and Speaker switches or controls are optional. These controls should be set for your particular installation or preference.



SERVICE BULLETIN FOR
MODEL 348
SOLID STATE STEREO TUNER/AMPLIFIER

SPECIFICATIONSTUNER (FM-MPX)

Usable Sensitivity (IHF)	1.9 microvolts
Cross Modulation Rejection	85 db
Signal to Noise Ratio	60 db below 100% modulation
Total Harmonic Distortion	0.8%
Frequency Deviation (Drift)	0.02%
*Frequency Response (Stereo)	50 to 15,000 cps \pm 1 db
Capture Ratio	4.0 db
Selectivity	45 db
AM Suppression	55 db
Tuning Range	88 to 109 mc
Accuracy of Calibration	0.5%
Separation	35 db or better

*This is limit of FCC Stereo Broadcast specifications. All H. H. Scott tuners have far wider frequency response.

TAPE OUTPUT

Rated Voltage Output to Tape Recorder	0.5v
Minimum Recommended Load Resistance	47K ohms

PRE-AMPLIFIER

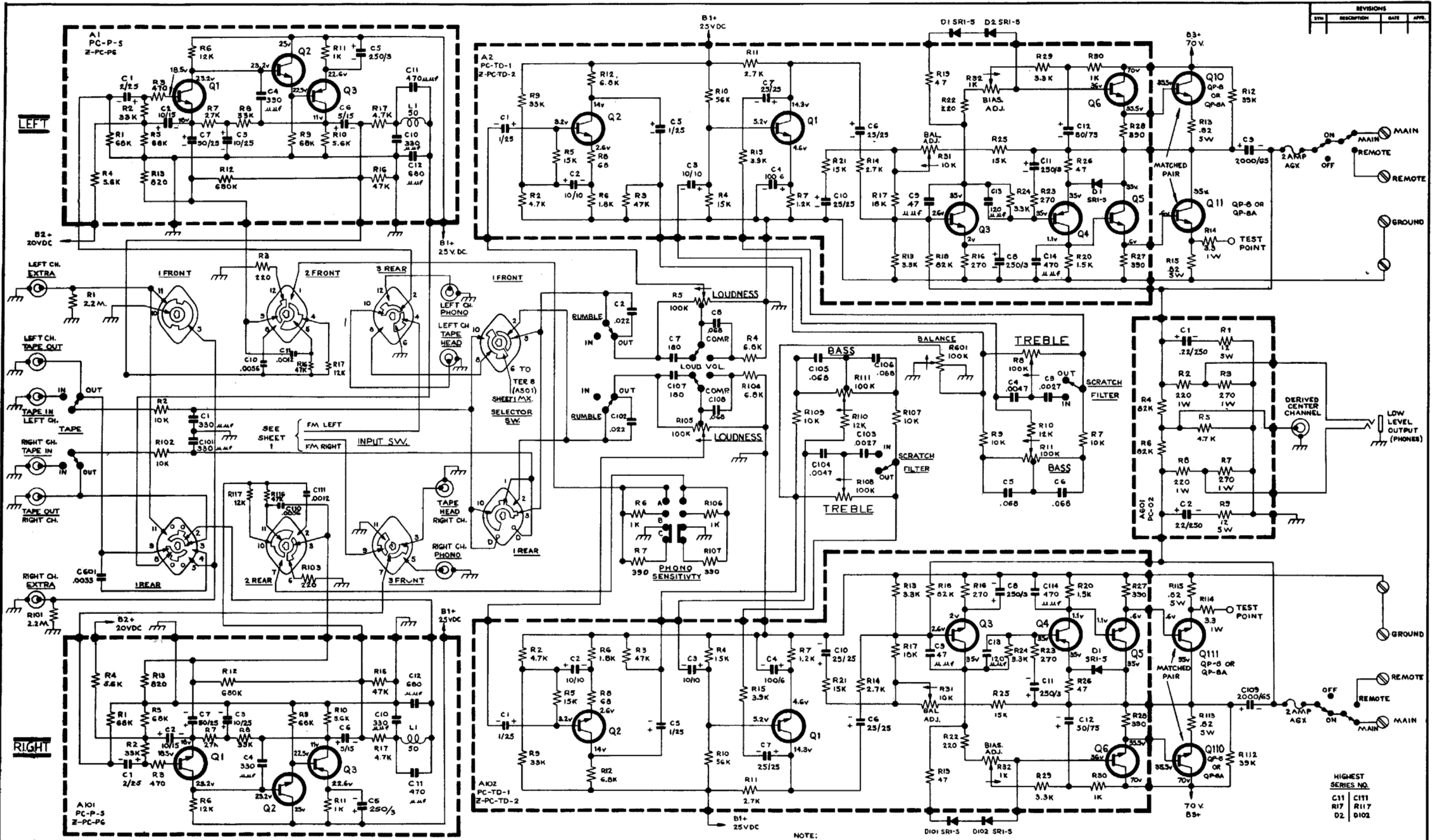
Input:

Tape Head - Input Impedance	47K ohms
Signal for Rated Output	3 mv
S/N Ratio	52 db
Phono - Input Impedance (All Switch Positions)	47K ohms
Signal for Rated Output (Adjustable by Switch)	3, 5, 9 mv
S/N Ratio	55 db
High Level Inputs - Input Impedance	50K ohms
Signal for Rated Output	.5v
S/N Ratio	75 db
Frequency Response in Flat Position	20-20KC \pm 2.0 db
Treble Controls Measured at 10,000 cps, Boost & Cut	10 db \pm 2 db
Bass Controls Measured at 30 cps, Boost & Cut	12 db \pm 2 db
Scratch Filter	-6 db @ 10KC
Loudness Compensation (Maximum)	+9 db @ 50 cps
Loudness Compensation	+2 db @ 10K cps

AMPLIFIERS

Power Ratio (Watts Per Ch.) @ 8% HD	
@ 4 ohms	60/60
@ 8 ohms	50/50
Continuous Output (Watts) Single Channel @ 8 ohms, 0.8% HD	35
Continuous Output (Watts) Both Channels @ 8 ohms, 0.8% HD	30/30
Frequency Response	15-30,000 cycles \pm 2 db
Power bandwidth at Rated Distortion (IHF Method)	20-20,000 cps
Hum and Noise	75 db below rated power
Range of Line Voltage and Frequency	105-120v, 50-60 cps
Power Consumption - 117v at 60 cps (AC Only)	35-135w

REVISIONS			
NO.	DESCRIPTION	DATE	APP.



A1, A101
PC-P-5, ZPC-P6
HIGHEST SERIES NO. C12, R17, L1

Q1 QA-12 (Q-2N3391A)
Q2 QA-13 (2N2926 OR 2N3708)
Q3 Q-2N2613

A2, A102
PC-TD-1, ZPC-TD-2
HIGHEST SERIES NO. C12, R32 + D1

Q4 QA-3
Q5 QA-10 (RED, BLUE, OR GREEN DOT)
Q6 QA-10 (BLUE, OR GREEN DOT)

UNLESS OTHERWISE SPECIFIED
1. RESISTORS IN OHMS = V2 WATT.
2. CAPACITORS IN MFD.
3. VOLTS D.C. ± 15% MEASURED WITH
20K Ω V.O.M. NO SIGNAL +117V LINE.
4. GAINS ± 2dB WITH A.C.V.T.V.M.
5. ARROWS ON POTS INDICATE C.V.
ROTATION.

NOTE:
THE FOLLOWING CONTROLS IN LEFT CHANNEL
ARE MECHANICALLY GANGED WITH IDENTICAL
CONTROLS IN THE RIGHT CHANNEL.

1. INPUT
2. SCRATCH FILTER
3. PHONO SENSITIVITY
4. COMPENSATOR

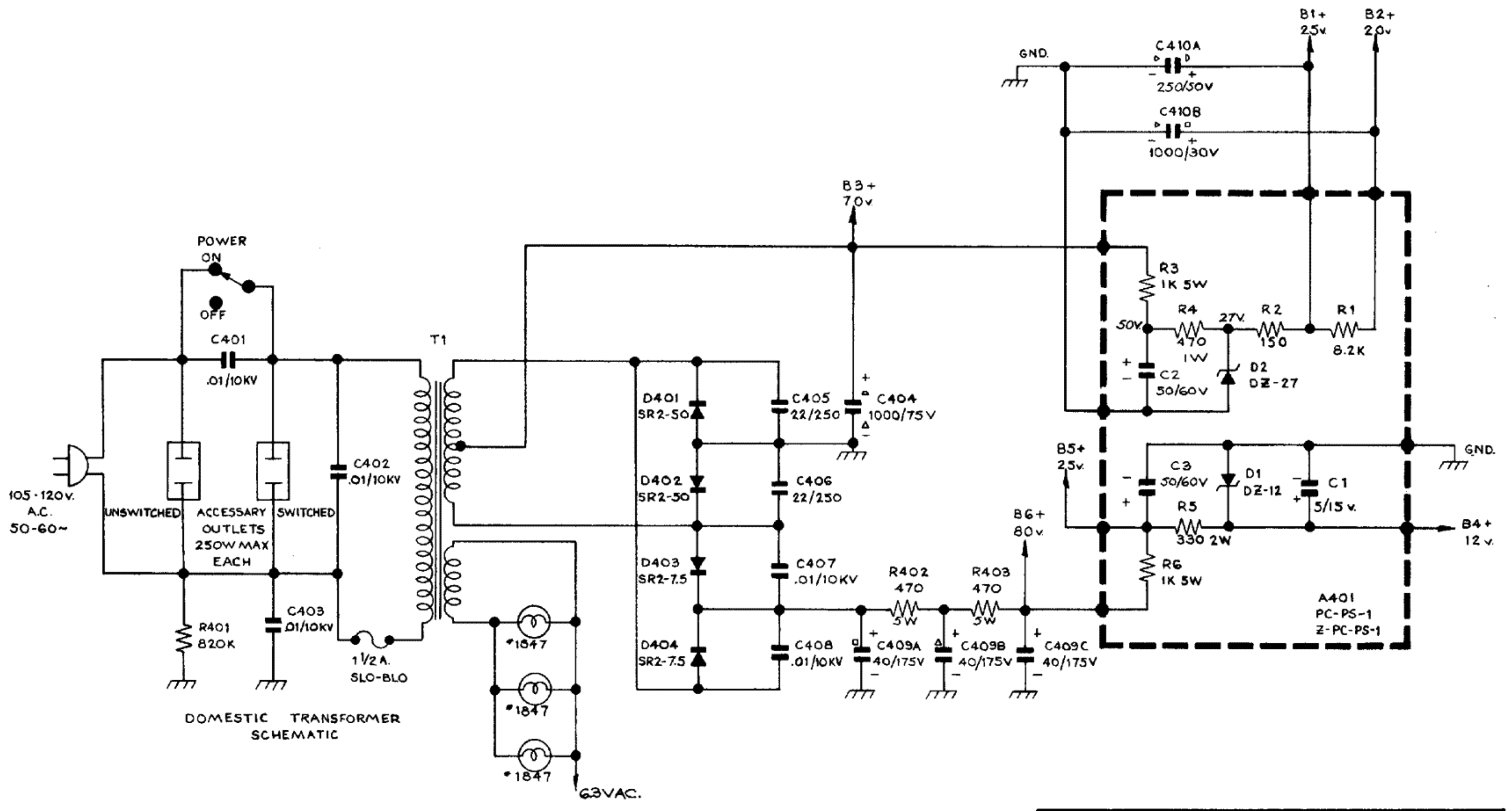
INPUT
POS. FUNCTION

1 - TAPE HD.
2 - PHONO
3 - FM
4 - SUB. CH. FIL.
5 - EXTRA

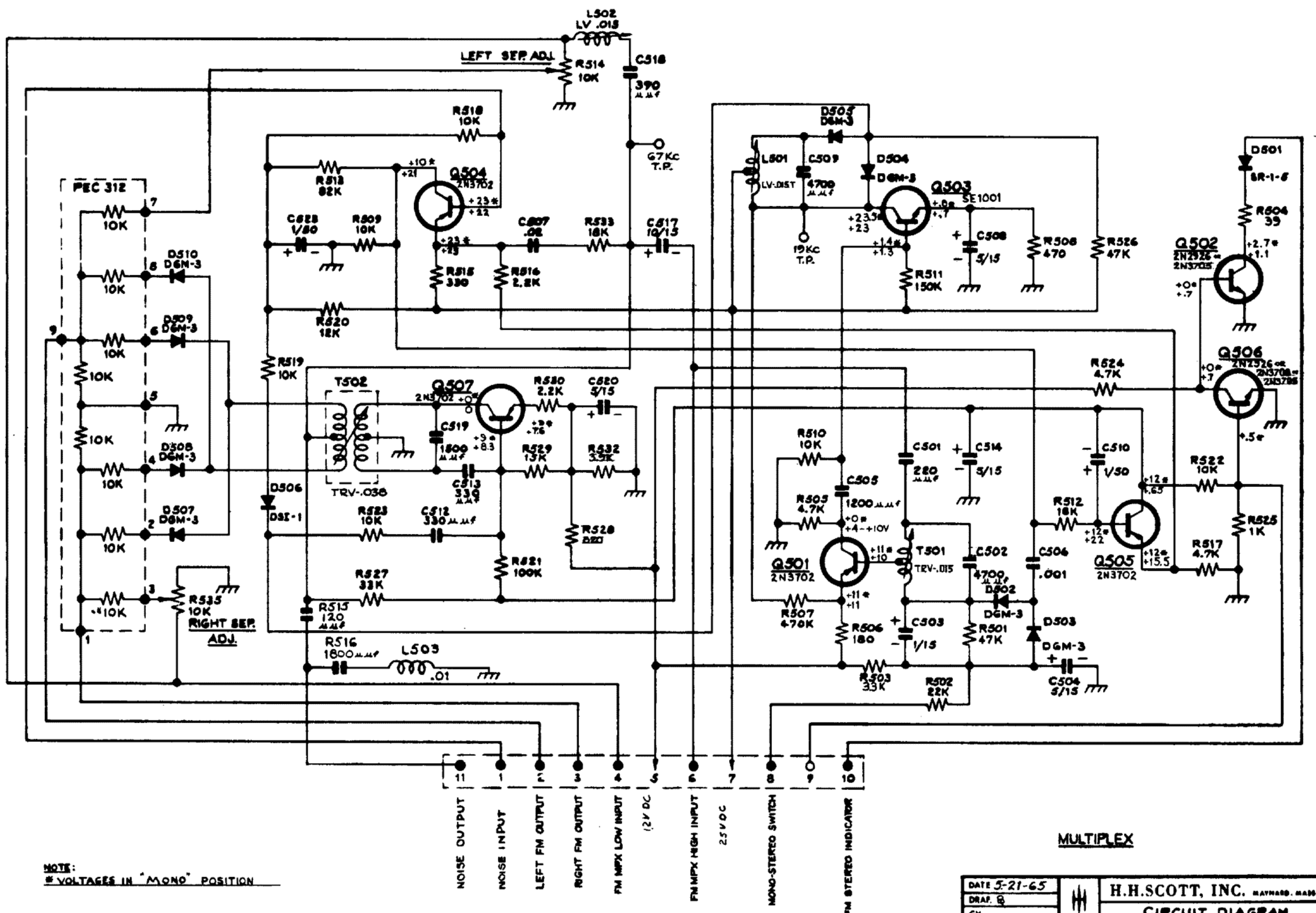
DATE 5-20-65	H.H. SCOTT, INC. MAYNARD, MASS.
DRWF. 62	
CH.	CIRCUIT DIAGRAM
ENG. AND DATA	SCALE: 1/8" = 1"
PROD.	SHEET 2 OF 3

HIGHEST SERIES NO.
C11 C111
R17 R117
D2 D102

348-C1



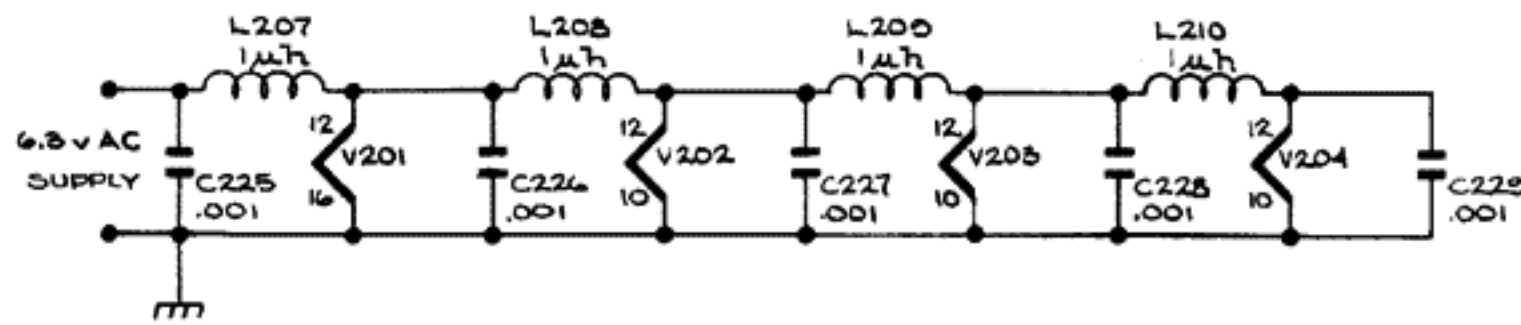
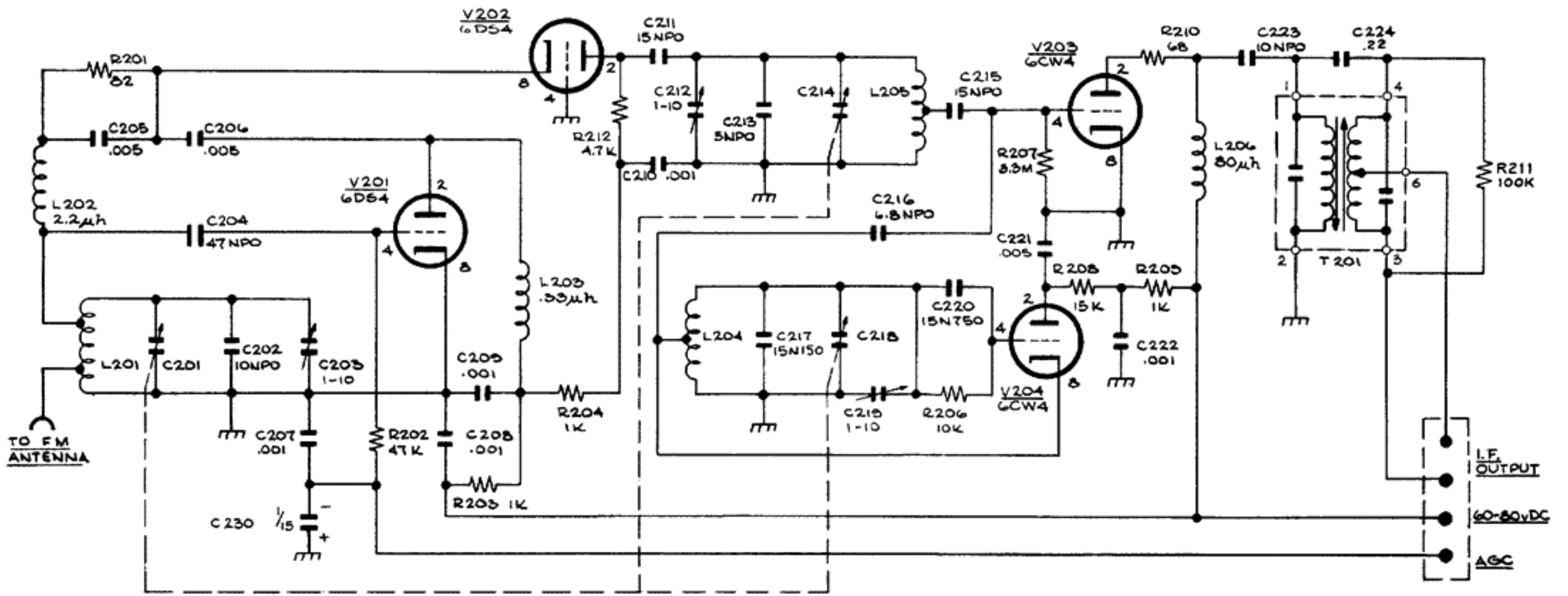
DATE 5-25-65	H.H. SCOTT, INC. MAYNARD, MASS.		
DRAF. R	CIRCUIT DIAGRAM		
CH.	SCALE:	DWG. SIZE	REV
ENG. <i>Aug 7/23/65</i>		C	348-C1
PROD.	SHEET 3 OF 3		0



NOTE:
* VOLTAGES IN "MONO" POSITION

MULTIPLEX

DATE 5-21-65	H.H. SCOTT, INC. MAYNARD, MASS.		
DRAF. R	CIRCUIT DIAGRAM		
CH.	SCALE:	DWG. SIZE	REV
ENG. <i>Aug 7/23/65</i>		C	Z-MX-11-C1
PROD.	SHEET 1 OF 1		0

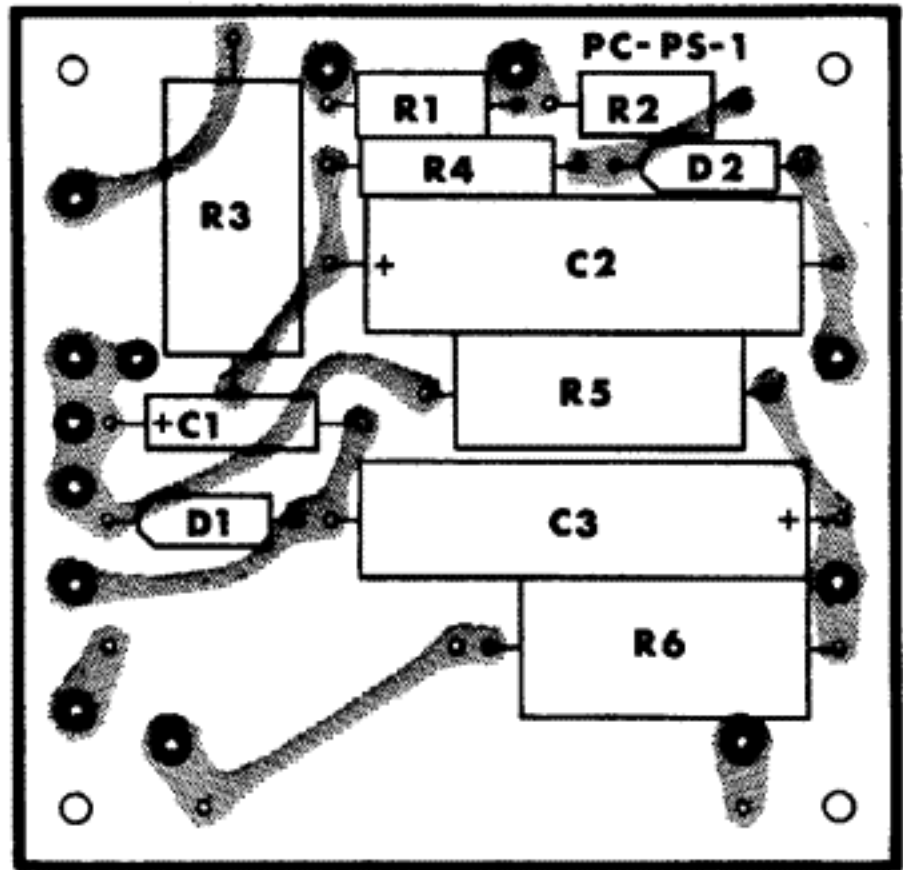


FRONT END

REVISIONS	
PER ECO #1132 3-31-65 GNL	1
PER ECO #1155 5-17-65 M	2

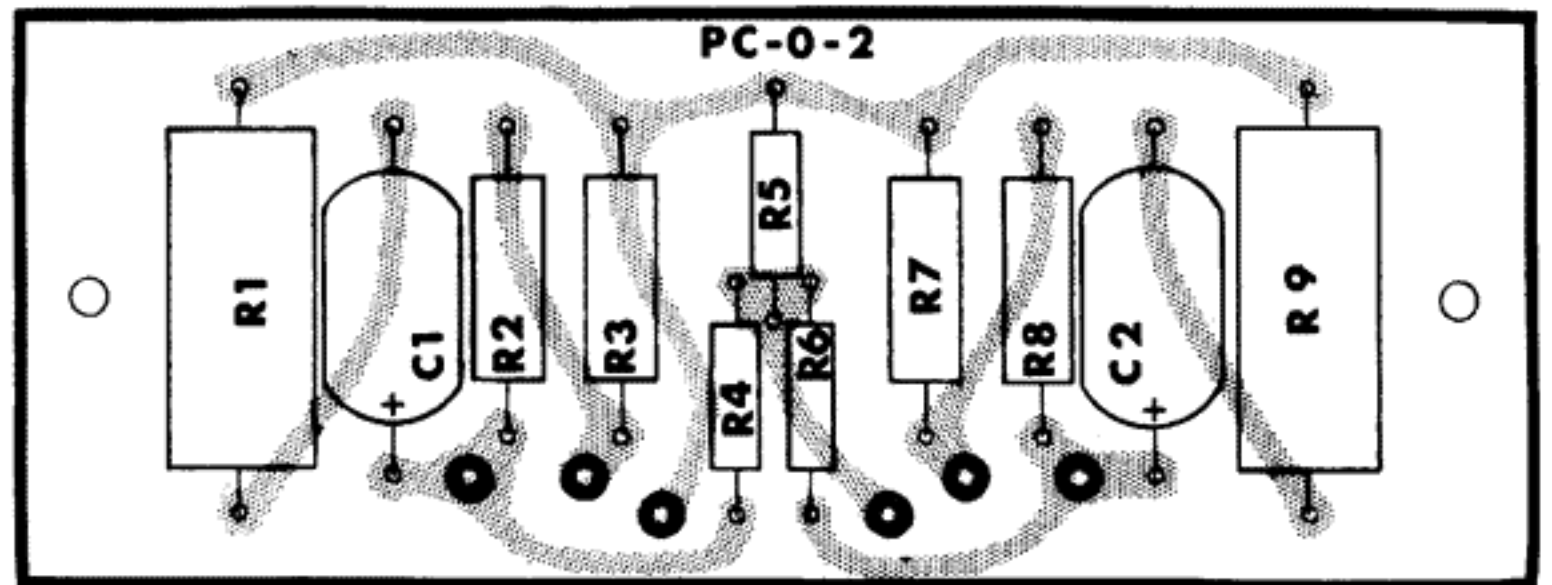
HIGHEST SERIES
NUMBERS
C230
L210
R212
T201

DATE 2-2-65	H.H. SCOTT, INC. WATYARD, MASS.
DRAW. E. KESSLER	
CH.	CIRCUIT DIAGRAM
ENG. <i>L.W.</i>	SCALE: -
PROD.	SHEET 1 OF 1
	DWG. NO. ZFM-5
	REV 2



POWER SUPPLY

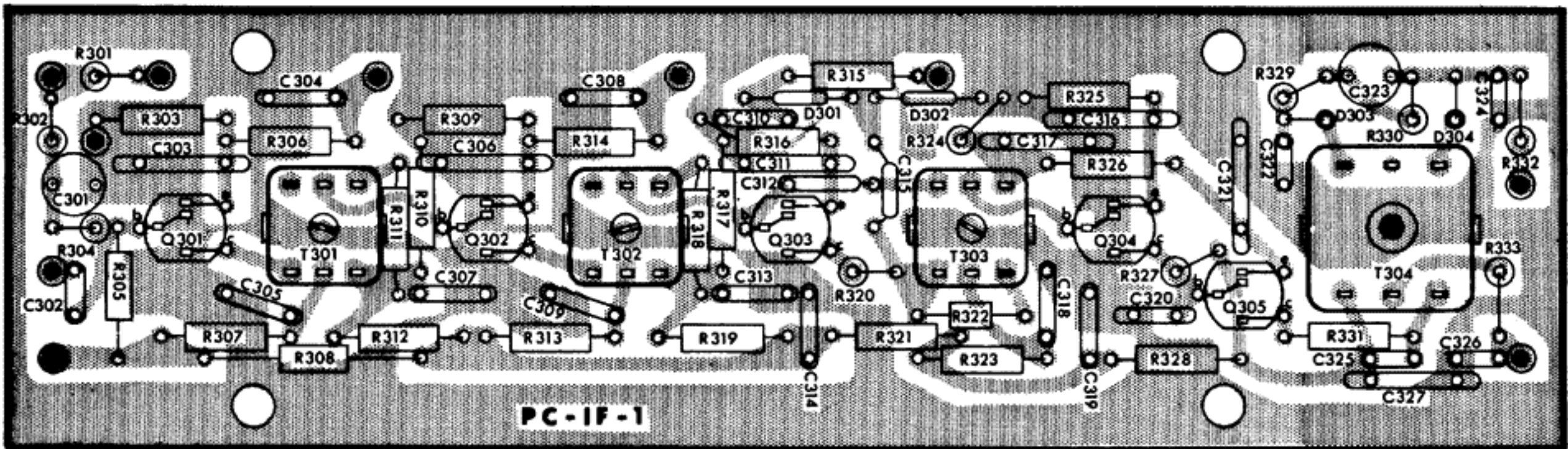
N-PC114-1L



OUTPUT

N-PC113-1L

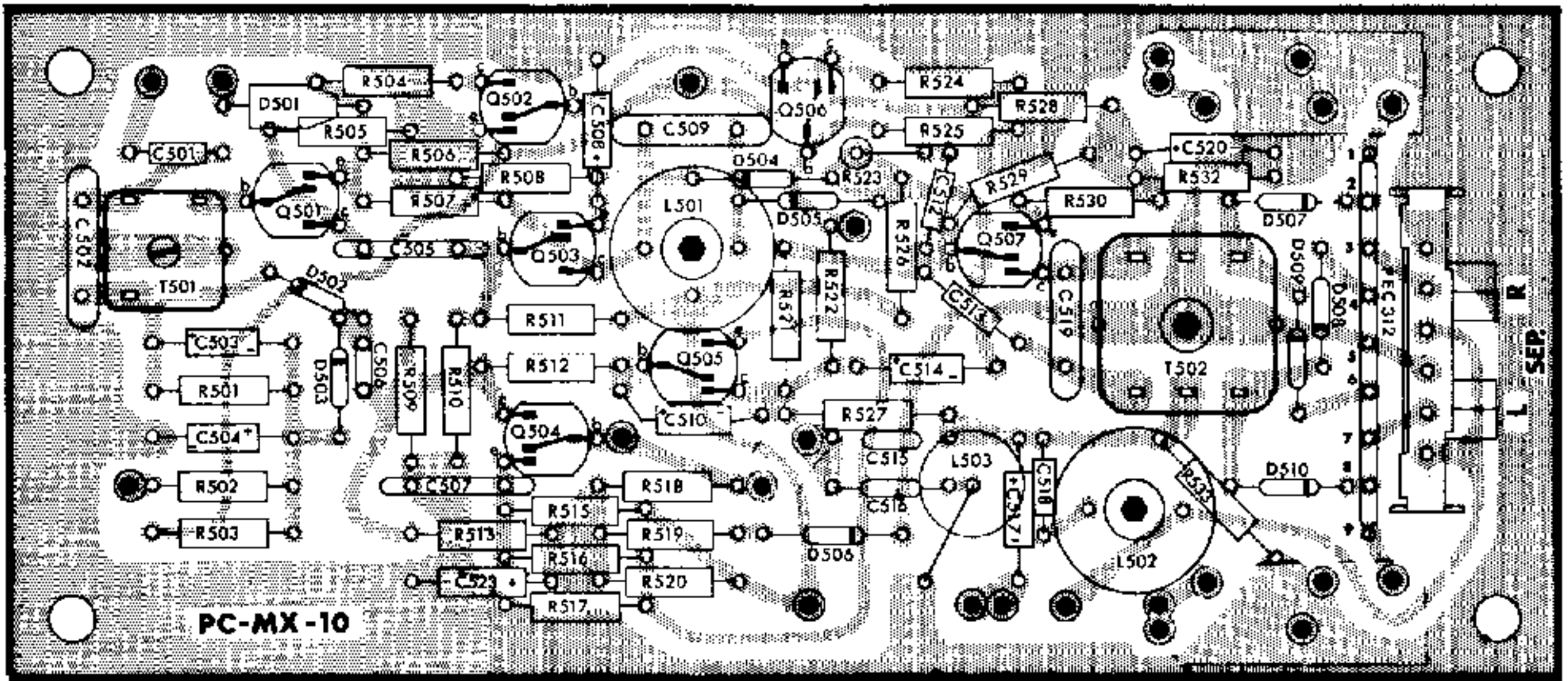
Q301-305 - SE1001



I.F. STRIP

N-PC107-1L

Q501, Q504, Q505, Q507 - 2N3702
 Q502, Q506 - 2N2926
 Q503 - 5E1001

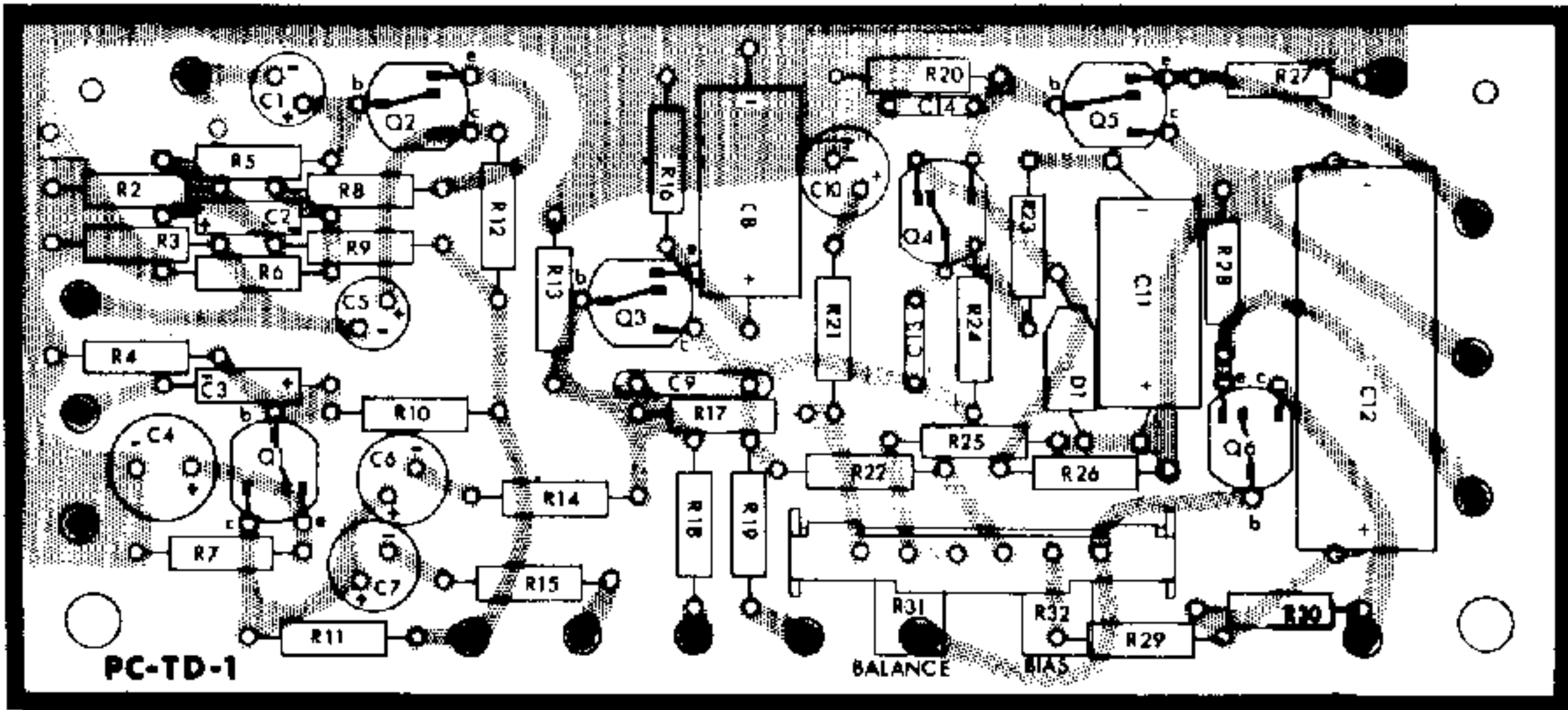


MULTIPLEX

N-PC109-4L

Q1- 2N2926 YEL or GRN
 Q2- 2N2926 YEL ONLY
 Q3- QA-10 GRN ONLY

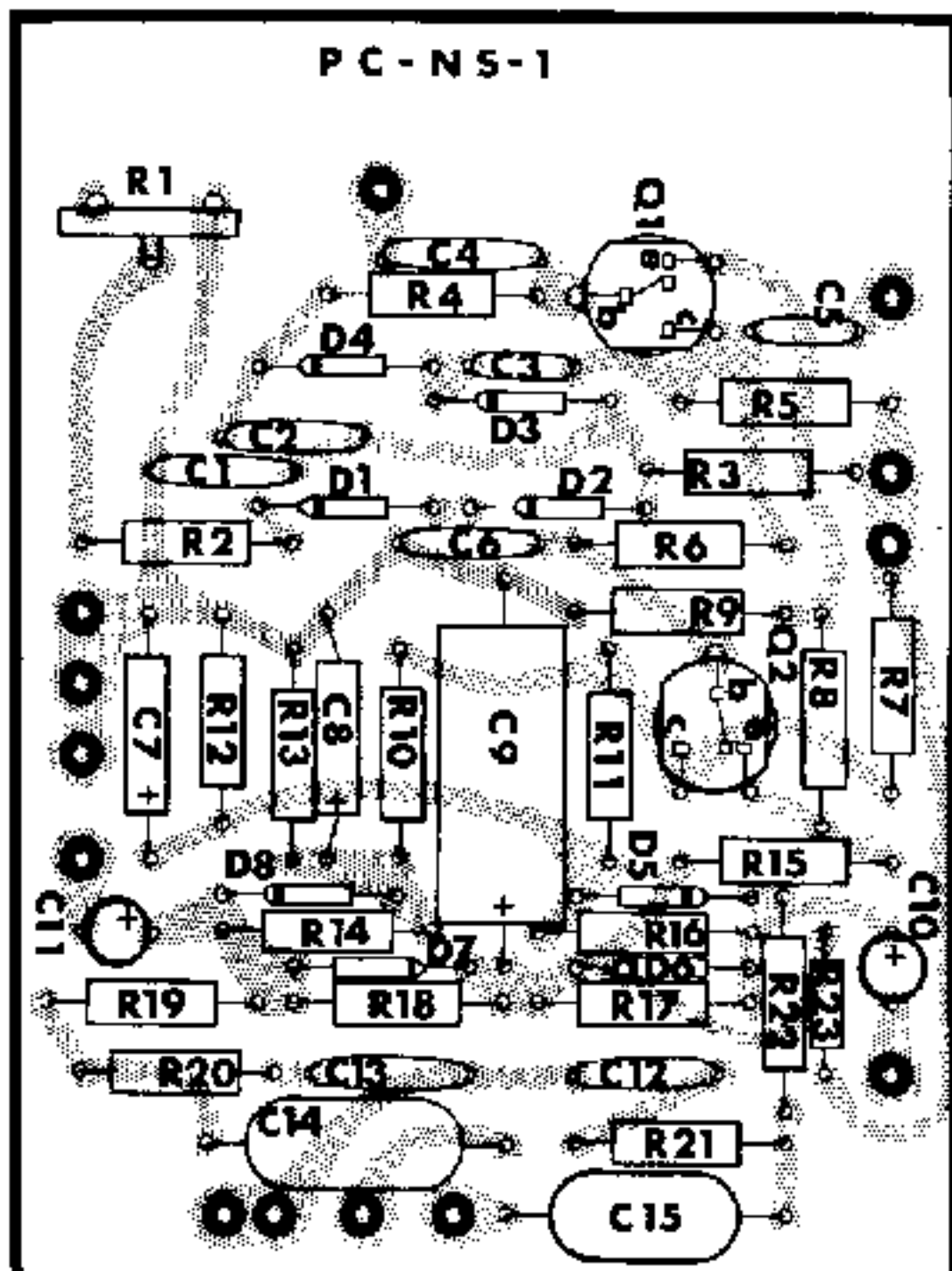
Q4- QA-9
 Q5- QA-10 RED, BLUE or GRN
 Q6- QA-10 BLUE or GRN



TONE CONTROL & DRIVER

N-PC110-2L

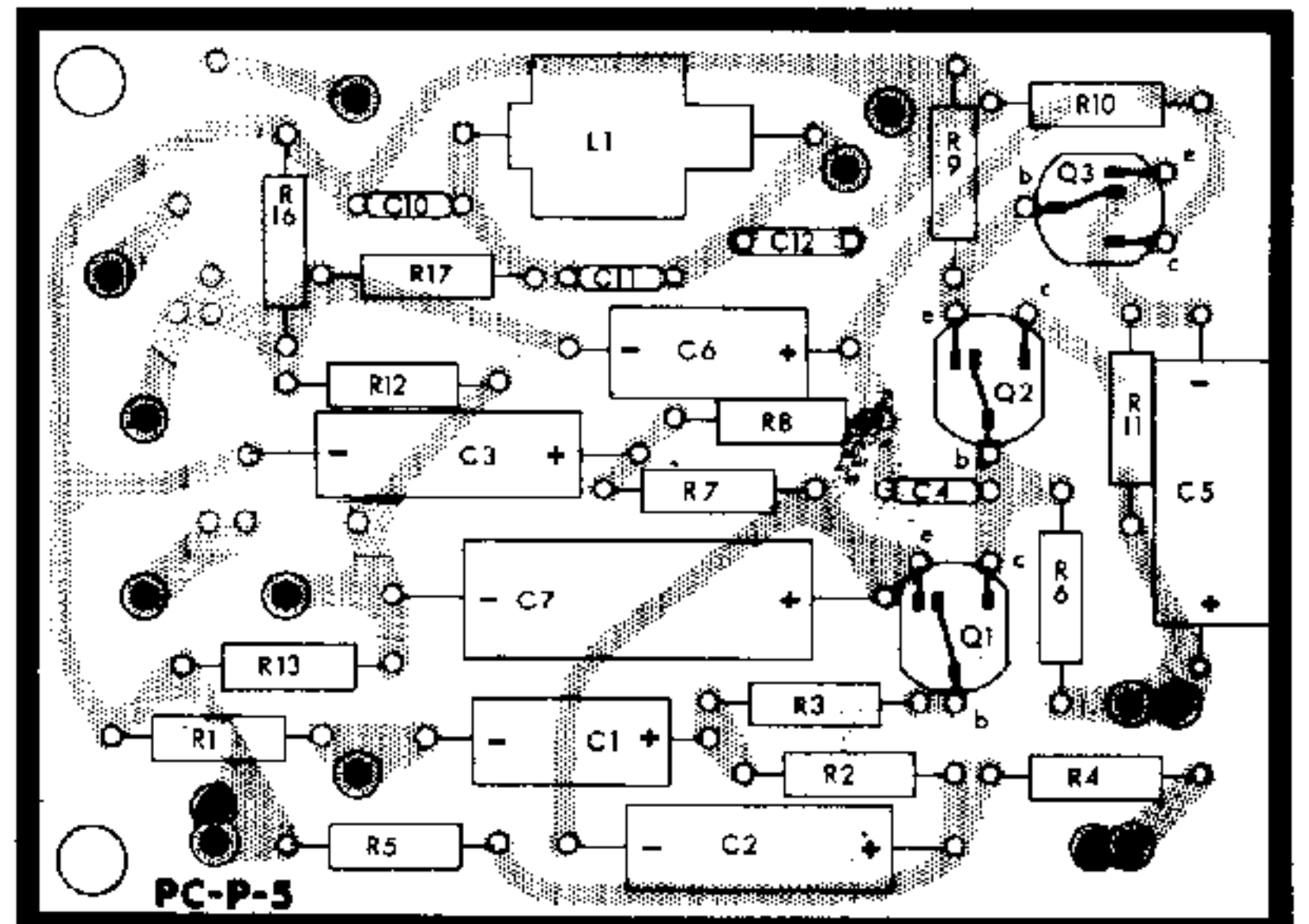
Q1-2N2926 YEL DOT
 Q2-2N2926 GRN or YEL DOT



NOISE AMP - SQUELCH

N-PC115-1L

Q1 - 2N2926 OR, YEL OR GRN DOT
 Q2 - 2N2926 BRN, RED OR OR DOT
 Q3 - 2N2613 OR 2N508A



PREAMP

N-PC111-2L