

HITACHI

SERVICE MANUAL



SM0101

AX-F300/HMD-R50

[UC, E, E(BS), W, W(UN)]

CD MECHANISM
MD MECHANISM

CDV300DW
MDM-99X

CAUTION DANGER

Invisible laser radiation when open and interlocks failed or defeated. AVOID DIRECT EXPOSURE TO BEAM.

GEFAHR

Unsichtbare Laser-Strahlung wenn Interlock (Blockierung) funktionsuntüchtig oder abgeschaltet.
UNMITTELBAREN KONTAKT MIT DEM STRAHL UNBEDIGT VERMEIDEN.

DANGER

Faire très attention aux radiations émises par le faisceau laser invisible au défaillance du verrouillage.
NE JAMAIS S'EXPOSER DIRECTEMENT AU FAISCEAU.

VARNING

När apparaten öppnats och skyddsanordningen felar eller satts ur funktion förekommer osynlig laserstrålning.
UNDVIK DIREKT BESTRÅLNING.

ADVARSEL

Når apparatet åbnes og beskyttelsesanordningen ikke virker eller sættes un af funktion, forekommer der usynlig laserstråling.
UNDGÅ DIREKTE BESTRÅLING.

ADVARSEL

Når denne delen er åpen som følge av at låsen er utkopleet eller ikke fungerer, eksisterer det usynlig laserstråling.
UNNGÅ Å BLI UTSATT FOR DIREKTE BESTRÅLING!

VARIOITS

Laite lähettää näkymätöntä lasersäteilyä, kun se avataan ja kun sisäiset turvalukot eivät toimi.
VARO JOUTUMASTA ALTTIIKSI SÄTEILYLLE.

CONTENTS

SPECIFICATIONS	3
SERVICE POINTS	4
ADJUSTMENTS	10
WIRING DIAGRAMS	11
PRINTED WIRING BOARDS	14
BLOCK DIAGRAM	25
CIRCUIT DIAGRAM	29
EXPLODED VIEW	53
REPLACEMENT PARTS LIST	56

SPECIFICATIONS AND PARTS ARE SUBJECT TO CHANGE FOR IMPROVEMENT

MINI COMPONENT HI-FI SYSTEM

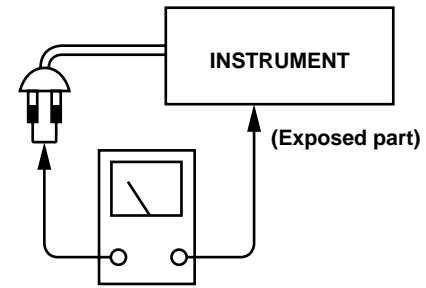
September 2000

HITACHI CONSUMER PRODUCTS (S)

Check that exposed parts are acceptably insulated from the supply circuit before returning the repaired instrument to the customer.

• **Checking method**

Measure the resistance value between the both poles of attachment cup (Power supply plug) and the exposed parts (Parts such as Knob, Cover, etc. where the customer is easy to touch.) and check that the resistance value is 500 kohms or more.



Insulation tester (DC 500V)

SAFETY PRECAUTIONS

The following precautions should be observed when servicing.

1. Since many parts in the unit have special safety-related characteristics, always use genuine Hitachi's replacement parts. Especially critical parts in the power circuit block should not be replaced with other makers. Critical parts are marked with \triangle in the circuit diagram and printed wiring board.
2. Before returning a repaired unit to the customer, the service technician must thoroughly test the unit to ascertain that it is completely safe to operate without danger of electrical shock.

SPECIFICATIONS

• AM-FM TUNER AMPLIFIER (HTA-R100)

Reception frequency band:	UC (FM:87.5~108.0MHz(100kHz step) AM:520~1710kHz(10kHz step)) E,EBS (FM:87.50~108.00MHz(50kHz step) MW:522~1611kHz(9kHz step) LW:153~281kHz(1kHz step)) W (FM:87.50~108.00MHz(50kHz step) AM:522~1611kHz(9kHz step) 520~1710kHz(10kHz step)) WUN (FM:76.00~108.00MHz(50kHz step) AM:522~1629kHz(9kHz step) 520~1710kHz(10kHz step))
Rated output power:	40 W + 40 W (6W/ohms, 1kHz, T.H.D. 10%)
Audio input / output jacks:	CD input jacks, TAPE input/output jacks, AUX input jacks, MD input/output jacks, PRE OUT (MONO) jack, headphones jack
Power supply:	E,EBS : AC 230 V, 50 Hz UC : AC 120 V, 60 Hz W,WUN : AC 110~127 V, 50/60 Hz AC 220~240 V, 50/60 Hz
Power consumption:	74 W (ECO-ON mode : 0.8 W)
Maximum external dimensions:	210 (W) ∞ 96.5 (H) ∞ 350 (D) mm (including feet, controls and terminals)
Weight:	4.5 kg

• CD CHANGER (DA-R100)

Sampling frequency:	44.1kHz
Optical source:	Semiconductor
Power supply:	E,EBS : AC 230 V, 50 Hz UC : AC 120 V, 60 Hz W,WUN : AC 110~127 V, 50/60 Hz AC 220~240 V, 50/60 Hz
Power consumption:	12 W
Maximum external dimensions:	210 (W) ∞ 96.5 (H) ∞ 340 (D) mm (including feet, controls and terminals)
Weight:	3.2 kg

• SPEAKER (HS-R30)

System:	2 way BASS Reflex Speaker System
Woofers:	10 cm ∞ 1
Tweeters:	5 cm ∞ 1
Impedance:	6 ohms
Maximum external dimensions:	150 (W) ∞ 275 (H) ∞ 227 (D) mm
Weight:	3.0 kg (1 speaker)

• TIMER

System:	Digital Quartz Clock
Display Format:	12-hour cycle (UC DEST) 24-hour cycle (other DEST)
Timer Accuracy:	Within 60 seconds at monthly rate

• REMOTE CONTROL

Remote control system:	Infrared pulse
Power supply:	Two DC 1.5V R6P/AA batteries
Maximum external dimensions:	54 (W) ∞ 27 (H) ∞ 172.5 (D) mm
Weight:	145g (including batteries)

• MINI DISC RECORDER (HMD-R50)

Type:	MiniDisc digital audio system
Wow & flutter:	Below measurable limits (±0.001% W. peak or less)
Sampling frequency:	44.1 kHz
Recording method:	Magnetic modulation overwriting
Light source:	Semiconductor Laser
Power supply:	E,EBS : AC 230 V, 50 Hz UC : AC 120 V, 60 Hz W,WUN : AC 110~127 V, 50/60 Hz AC 220~240 V, 50/60 Hz
Power consumption:	14 W
Maximum external dimensions:	210 (width) ∞ 96.5 (height) ∞ 320 (depth) mm (including feet, controls and terminals)
Weight:	2.6 kg

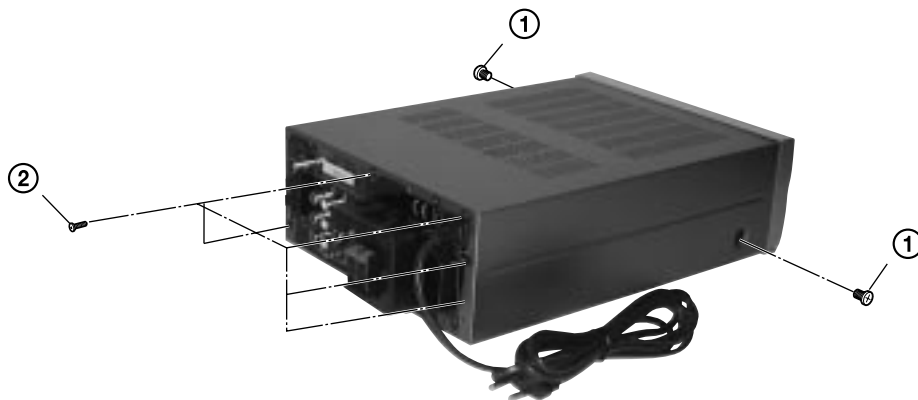
Specifications are subject to change or performance improvement without notice.

SERVICE POINTS

• AM-FM TUNER AMPLIFIER (HTA-R100)

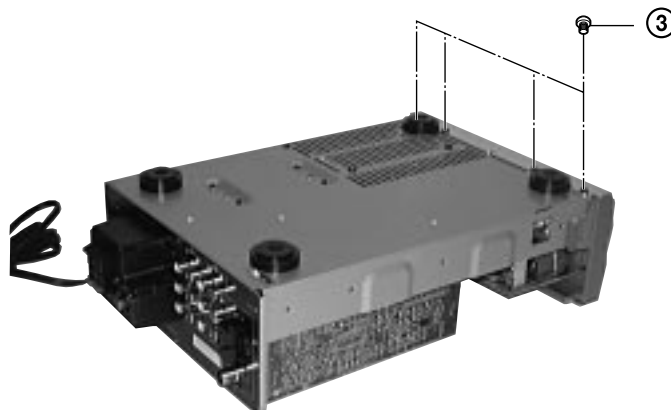
1. Removal of Cover

- (1) Remove 2 screws ① from both sides.
- (2) Remove 5 screws ② from the rear plate.



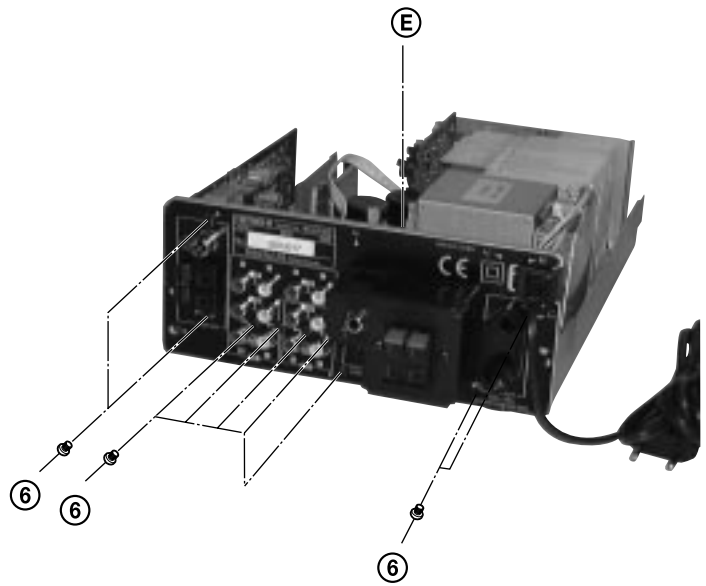
2. Removal of Front Panel

- (1) Remove 4 screws ③ from the bottom side of the front panel.
- (2) Remove 2 screws ④ from both sides.
- (3) Remove screw ⑤ to remove the ground wire. (E DEST ONLY).
- (4) Remove the connectors ①, ②, ③ and ④.
- (5) Remove the Front Panel by releasing the pawl on both sides.



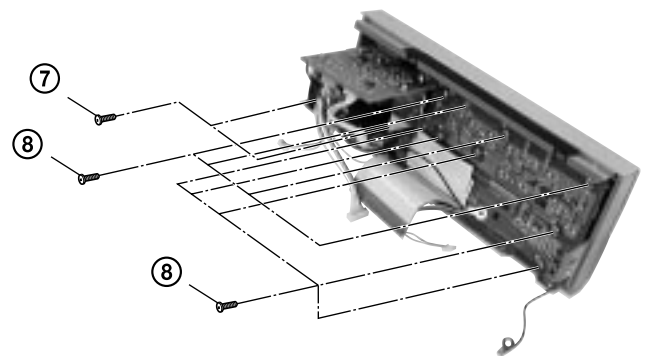
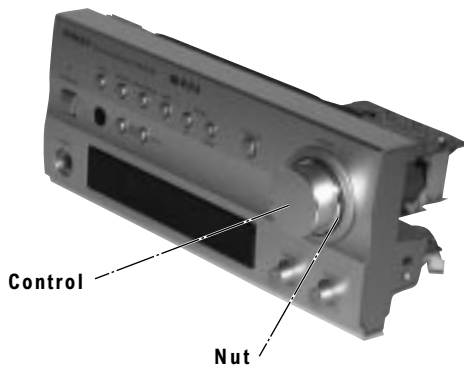
3. Removal of Rear Panel

- (1) Remove 9 screws ⑥ from the rear panel.
- (2) Remove the connector ⑤.



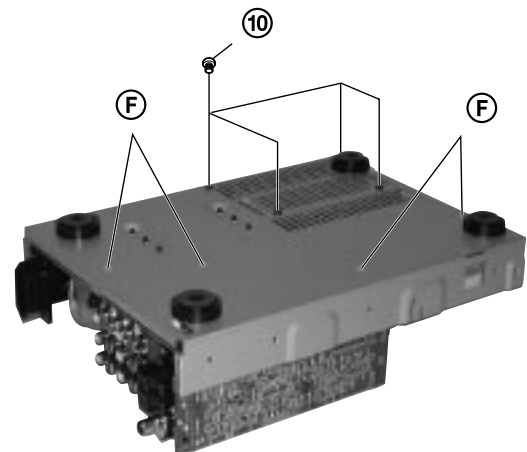
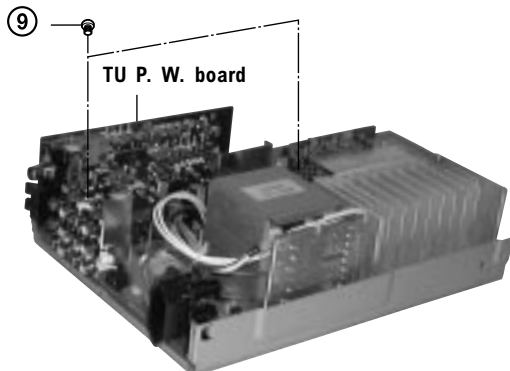
4. Removal of Front P. W. Board

- (1) Remove 2 screws ⑦ and then the tone P. W. board.
- (2) Remove the volume knob assy, remove the nut and remove the volume P. W. board.
- (3) Remove 9 screws ⑧.



5. Removal of Main P. W. Board

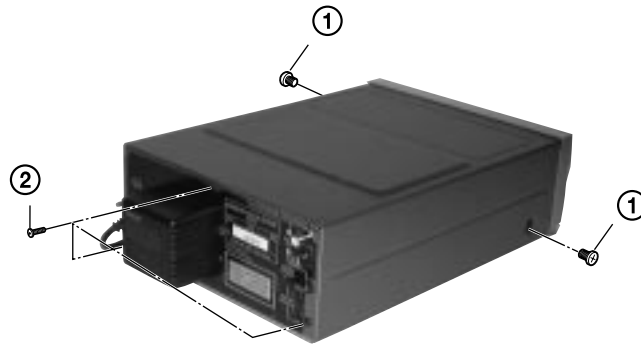
- (1) Lift up the TU P. W. board and remove it from the main P. W. board.
- (2) Remove 2 screws ⑨ from the top side of the main P. W. board.
- (3) Remove 4 screws ⑩ from the bottom side of the chassis.
- (4) Remove the 4 P. W. board holders ⑥ from the chassis via the bottom side of the chassis.



• **CD CHANGER (DA-R100)**

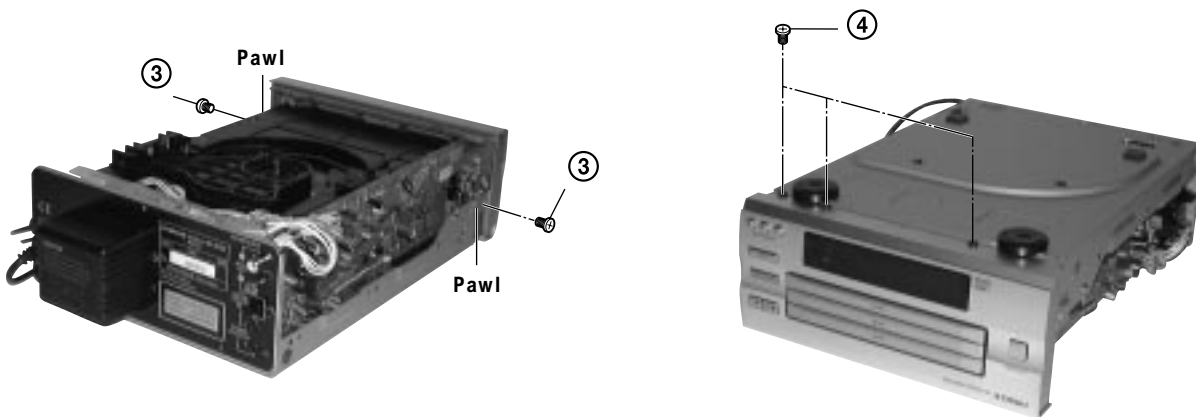
1. Removal of Cover

- (1) Remove 2 screws ① from both sides.
- (2) Remove 3 screws ② from the rear panel.



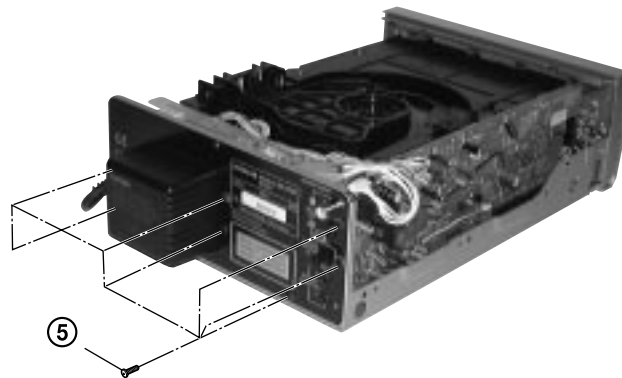
2. Removal of Front Panel

- (1) Remove 2 screws ③ from both sides.
- (2) Remove 3 screws ④ from the bottom side of the front panel.
- (3) Remove the Front Panel by releasing the pawl on both sides.
- (4) Remove the flat cable from the main P.W. board.



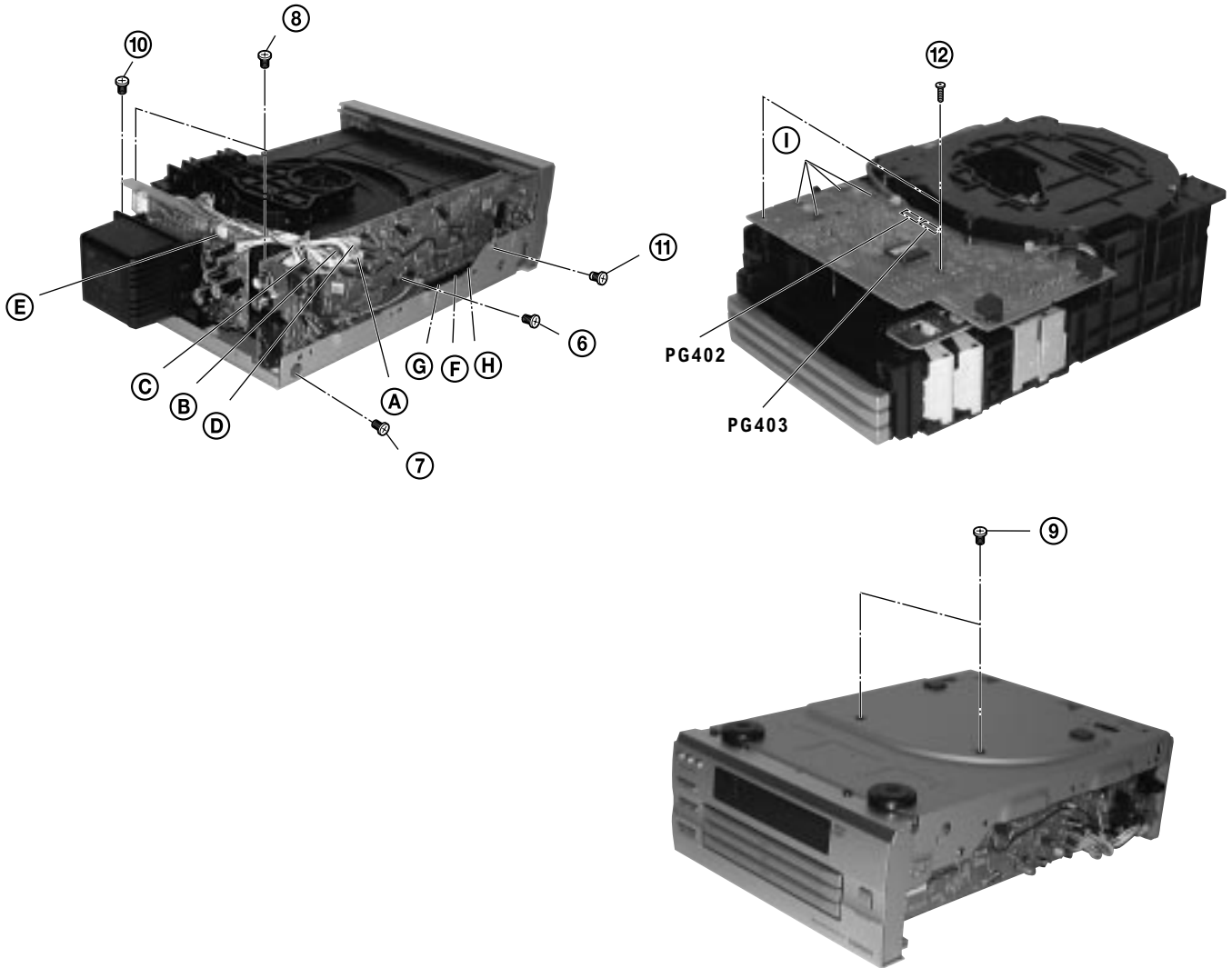
3. Removal of Rear Panel

- (1) Remove 7 screws ⑤ from the rear panel.



4. Removal of CD Mechanical-Unit Assembly, Main P. W. Board and Motor P. W. Board

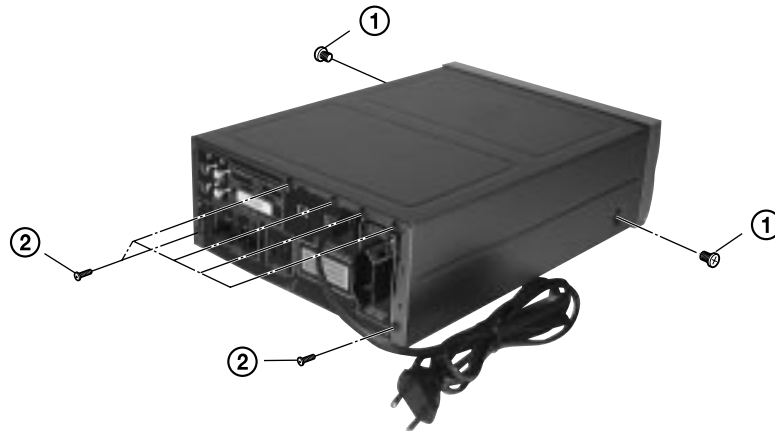
- (1) Remove one each of screws ⑥ and ⑦ from the main P.W. board on the side.
- (2) Remove 2 screws ⑧ from the top side of the mechanical unit.
- (3) Remove 2 screws ⑨ from the bottom side of the chassis.
- (4) Remove the connectors ①, ②, ③ and ④ of the main P.W. board.
- (5) Remove the connector ⑤ of the P.T. P.W. board.
- (6) Remove 1 screw ⑩ from the top side of the P.T. cover and detach the power transformer from the chassis.
- (7) Remove 1 screw ⑪ of the ground wire.
- (8) Remove the connectors ⑫, ⑬ and ⑭ of the motor P.W. board from the main P.W. board.
- (9) Remove 2 screws ⑮ from the motor P.W. board.
- (10) Remove the solder from the four places of the soldering section ⑯ of the motor.
- (11) Remove the connectors PG402 and 403 of the motor P.W. board.



• **MINI DISC RECORDER (HMD-R50)**

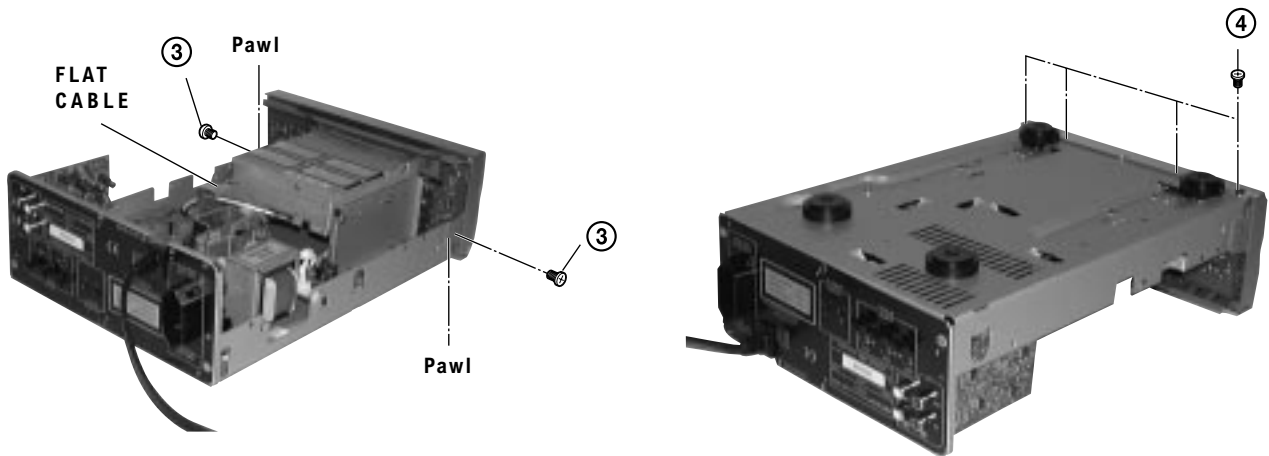
1. Removal of Cover

- (1) Remove 2 screws ① from both sides.
- (2) Remove 6 screws ② from the rear panel.



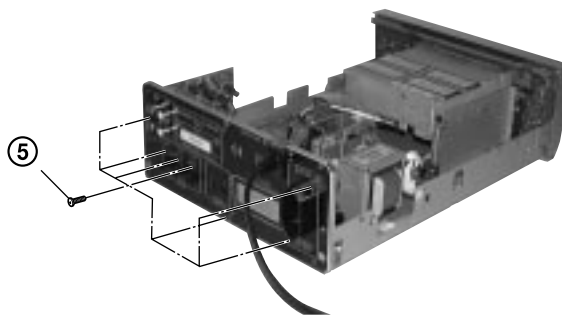
2. Removal of Front Panel

- (1) Remove 2 screws ③ from both sides.
- (2) Remove 4 screws ④ from the bottom side of the front panel.
- (3) Remove the Front Panel by releasing the pawl on both sides.
- (4) Remove the flat cable from the main P.W. board.



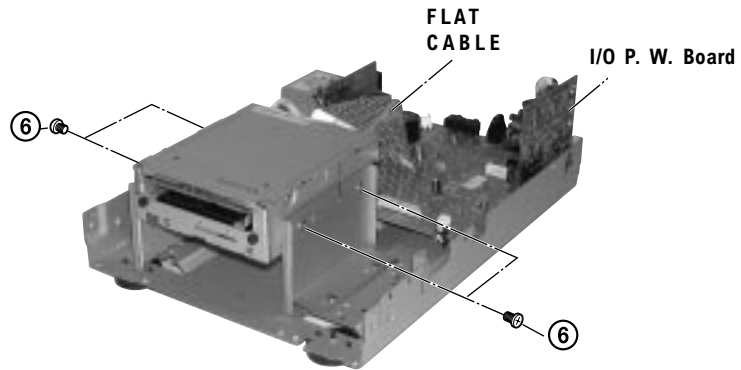
3. Removal of Rear Panel

- (1) Remove 7 screws ⑤ from the rear panel.



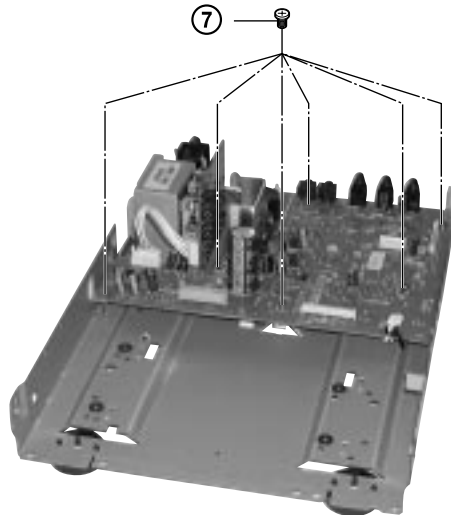
4. Removal of MD Mechanical-Unit Assembly

- (1) Remove 4 screws ⑥.
- (2) Remove the flat cable from the main P.W. board.



5. Removal of Main P. W. Board

- (1) Lift up the I/O P.W. board and remove it from the main P.W. board.
- (2) Remove 6 screws ⑦.



ADJUSTMENTS

Measuring Instruments Necessary for Adjustments

- DC voltmeter
- Screwdrivers for adjustments

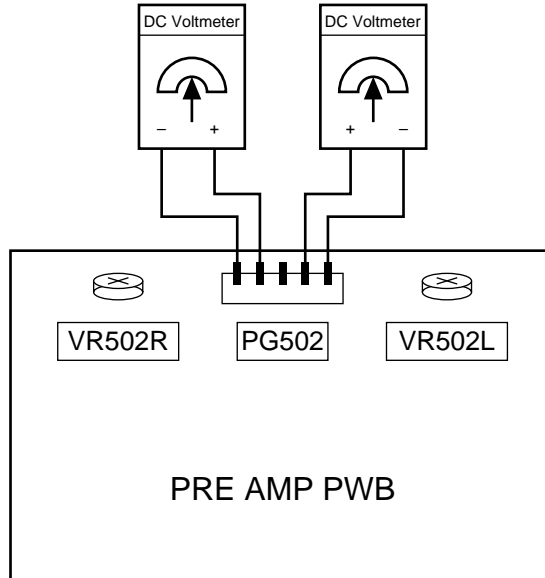
Before adjustments, perform the following setting in the receiver section (HTA-R100).

Note: Making adjustments without performing the following setting may result in damage of power transistors.

- (1) Power switch : OFF
- (2) Volume knob : MIN
- (3) Function switch : AUX
- (4) Speaker : Open
- (5) VR502L/R : Minimum

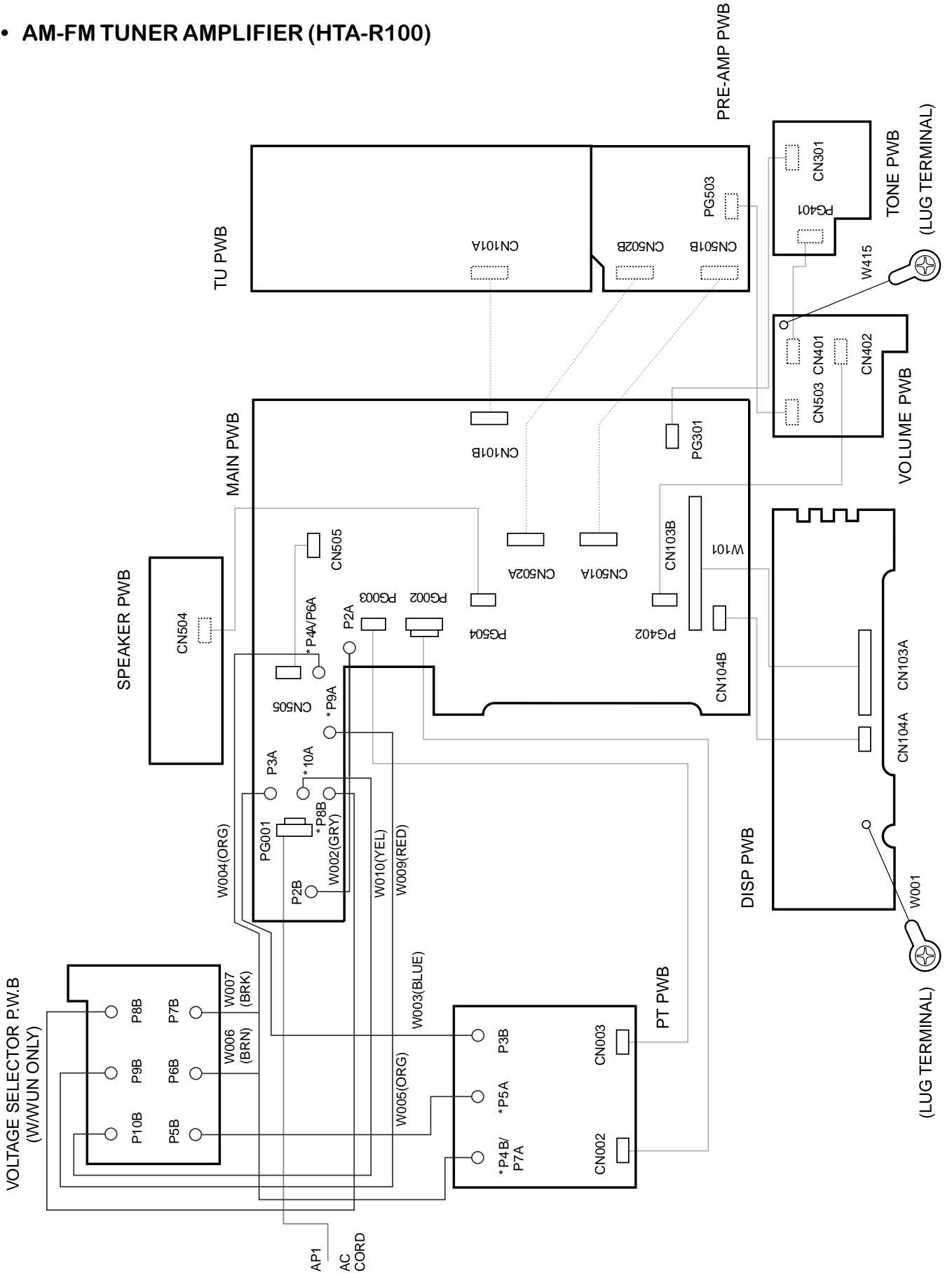
1. Idle Current Adjustment

- (1) Connect the DC voltmeter to PG502. (Refer to the connection diagram.)
- (2) Turn on the power and adjust VR502L (on the left) and VR502R (on the right) so that the measured value of the voltmeter can be within the range of 2 ± 0.5 mV.

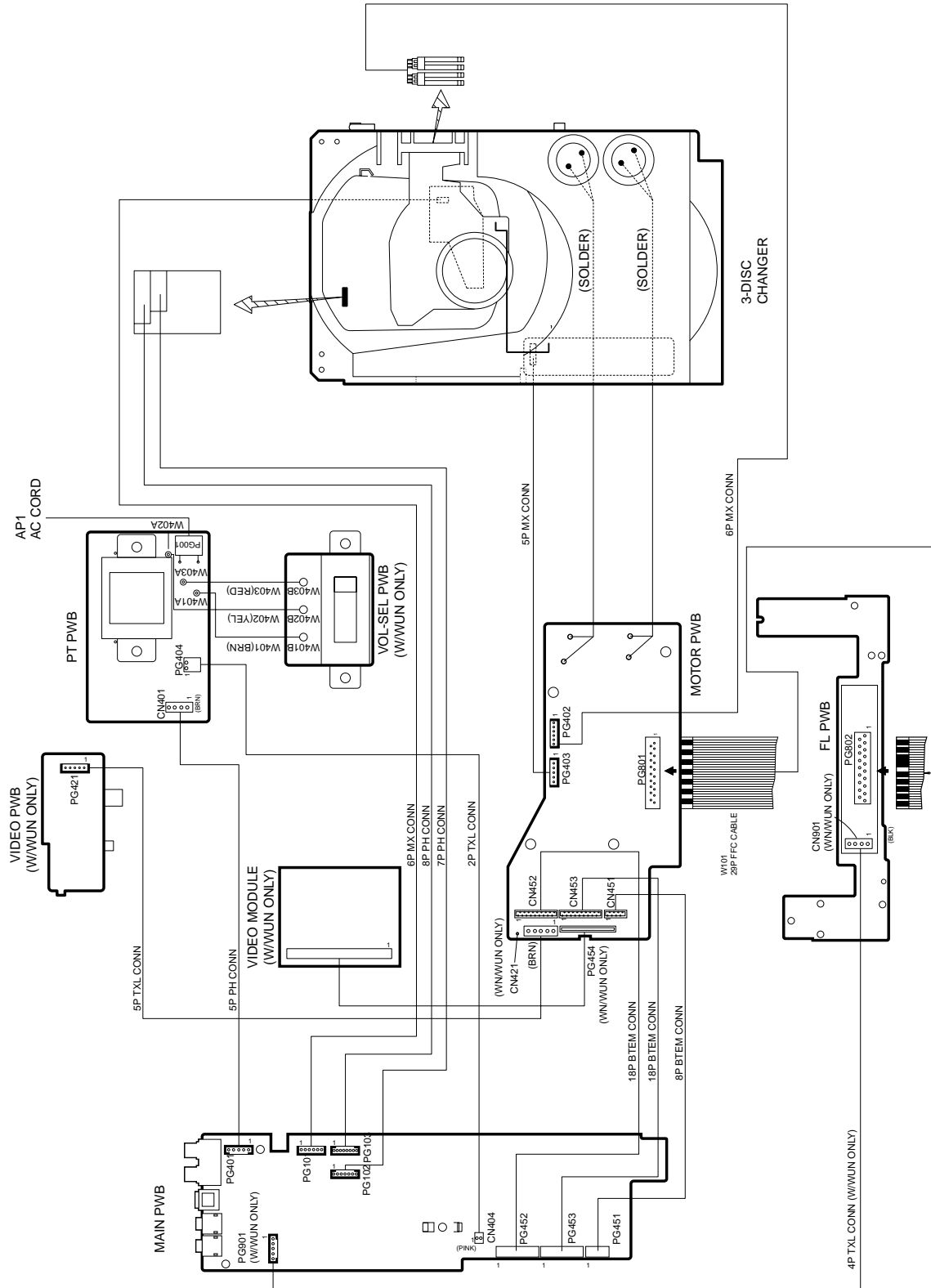


WIRING DIAGRAMS

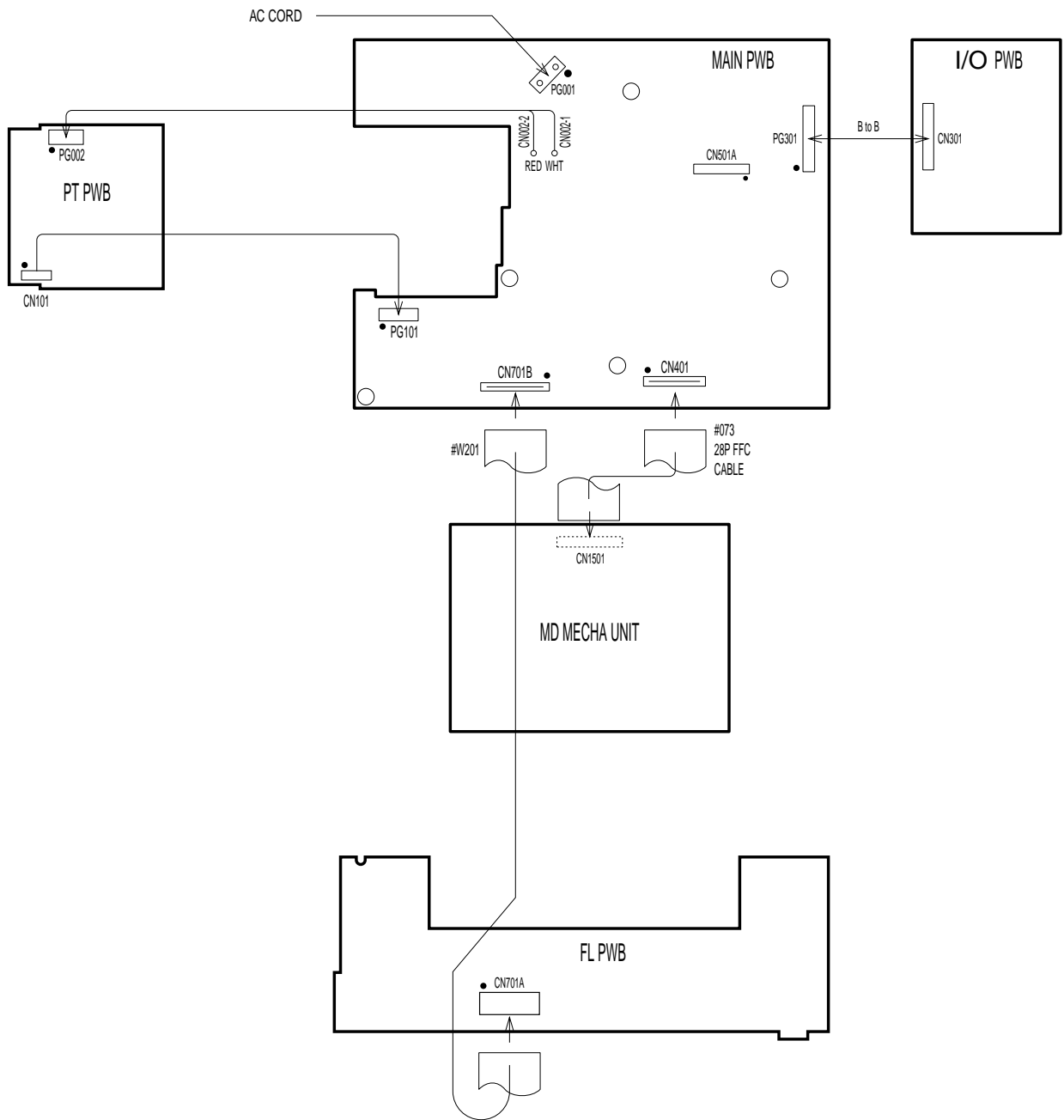
• AM-FM TUNER AMPLIFIER (HTA-R100)



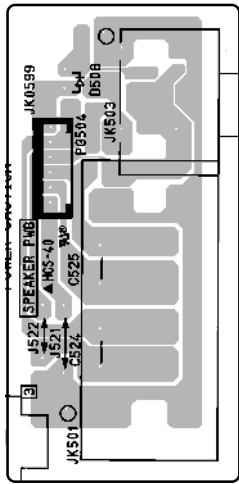
• CD CHANGER (DA-R100)



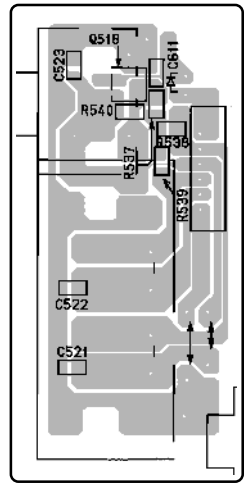
• MINI DISC RECORDER (HMD-R50)



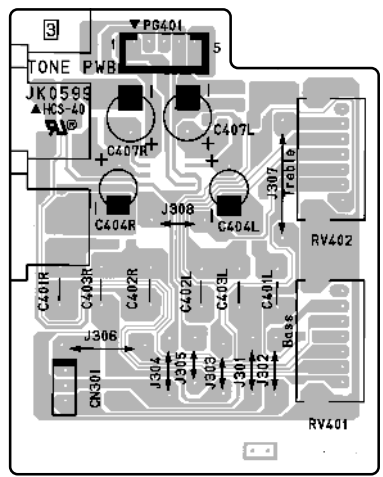
SP PWB
Component Side



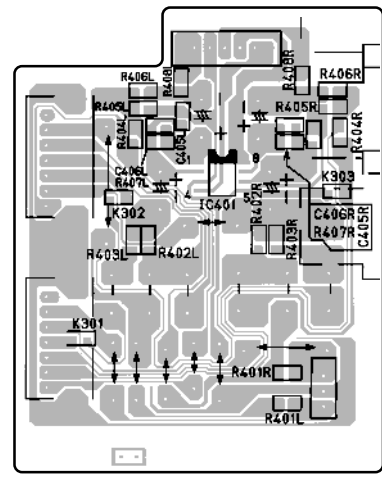
Soldering Side



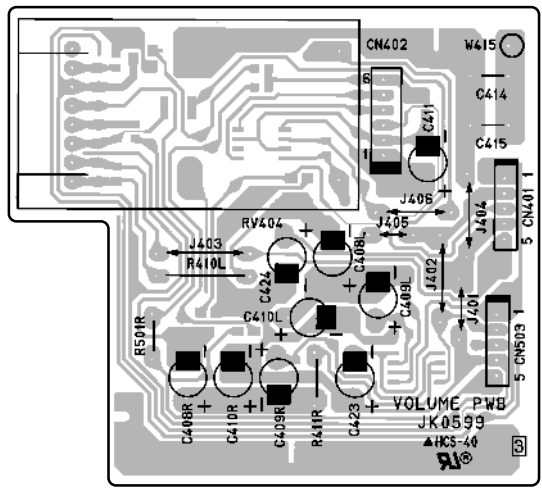
TONE PWB
Component Side



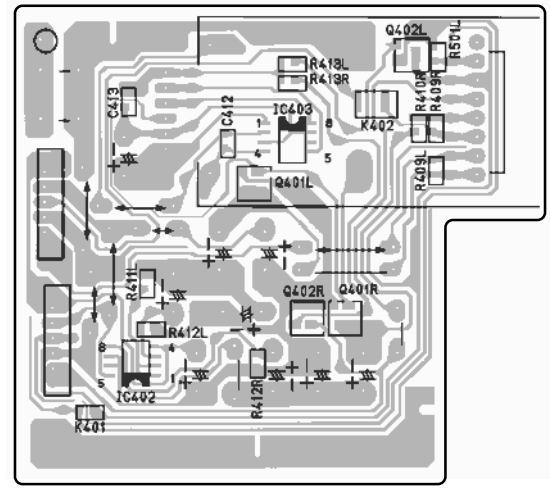
Soldering Side



VOL PWB
Component Side



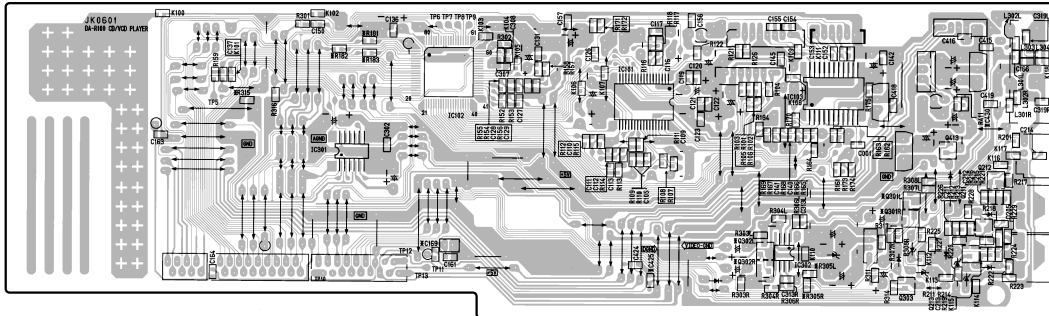
Soldering Side



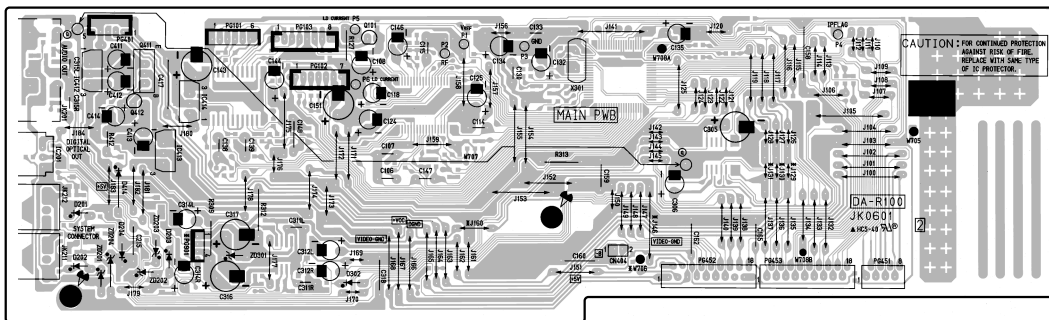
• CD CHANGER (DA-R100)

MAIN PWB

Soldering Side

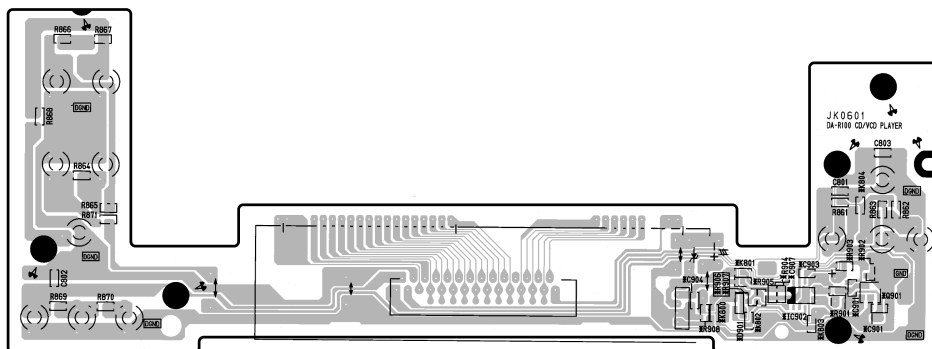


Component Side

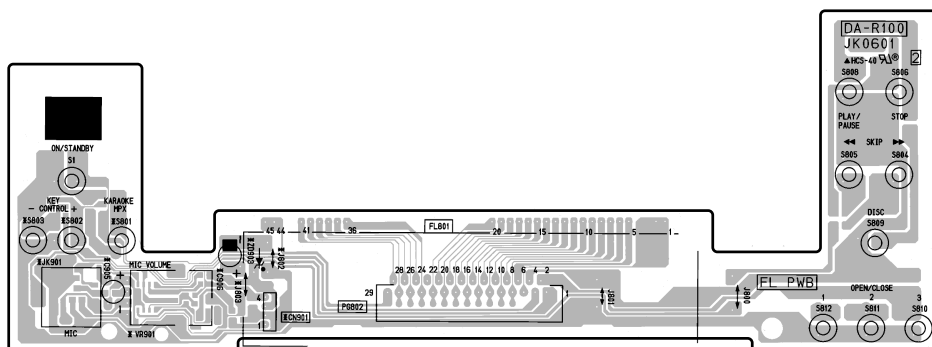


FL PWB

Soldering Side



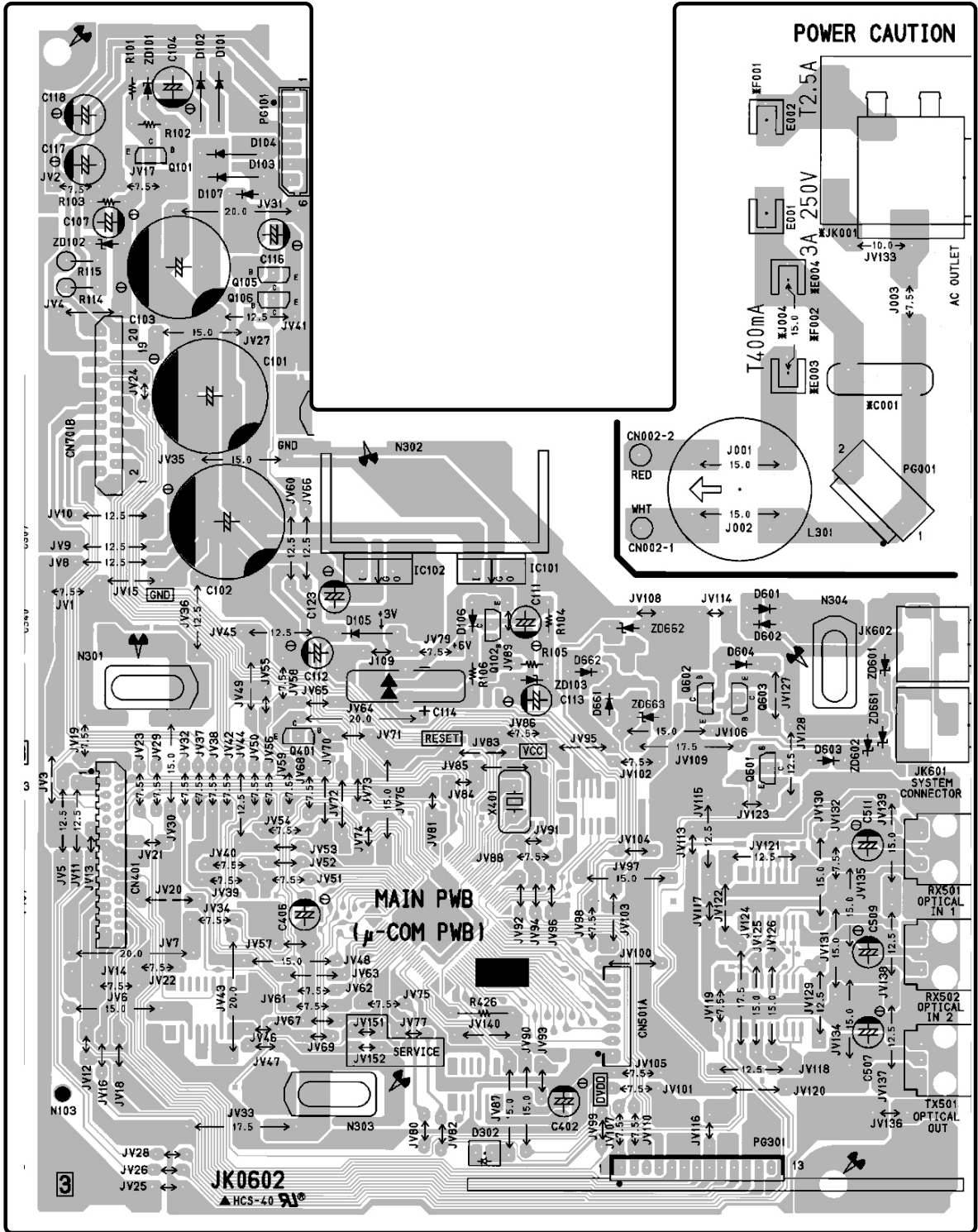
Component Side



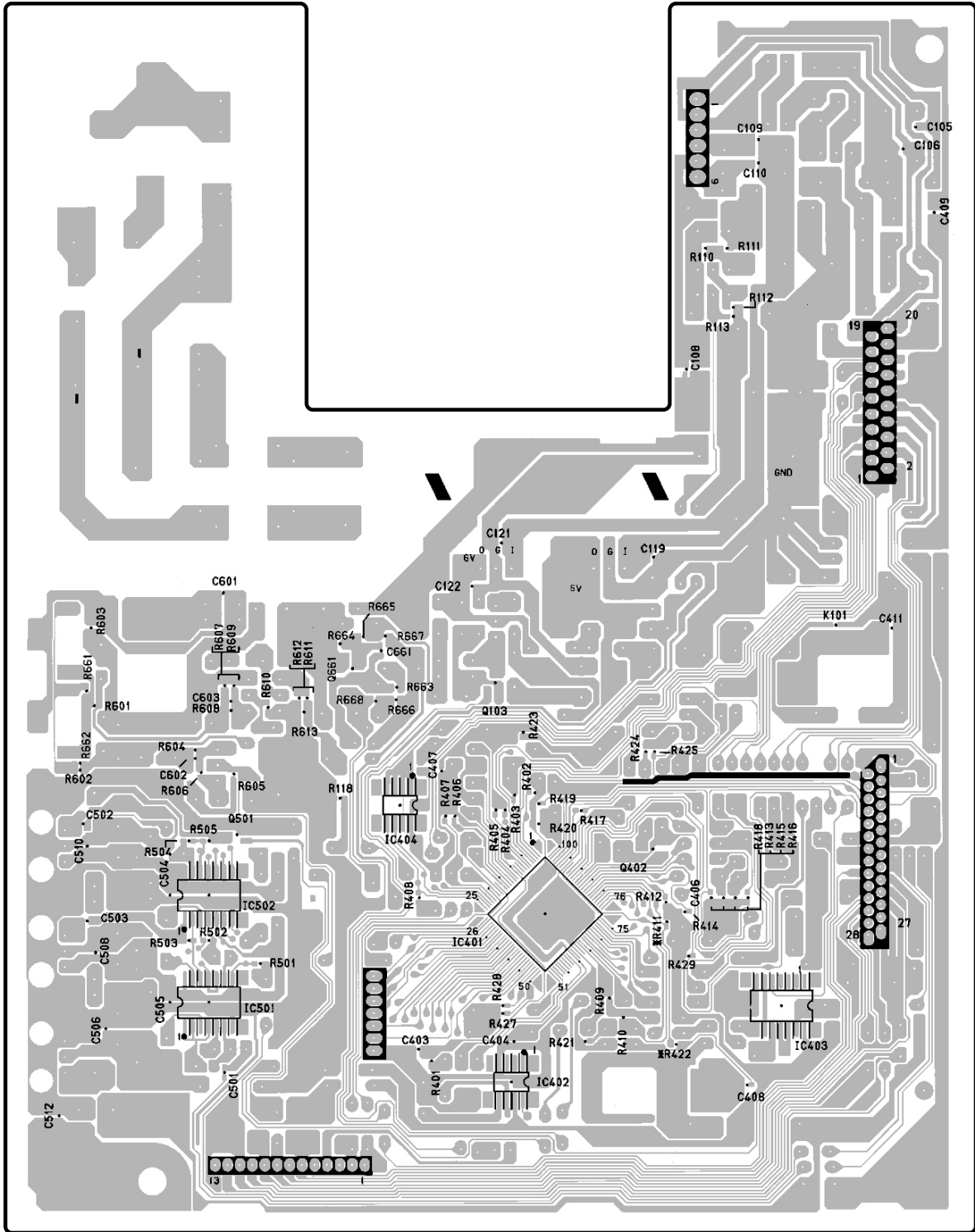
• MINI DISC RECORDER (HMD-R50)

MAIN PWB

Component Side

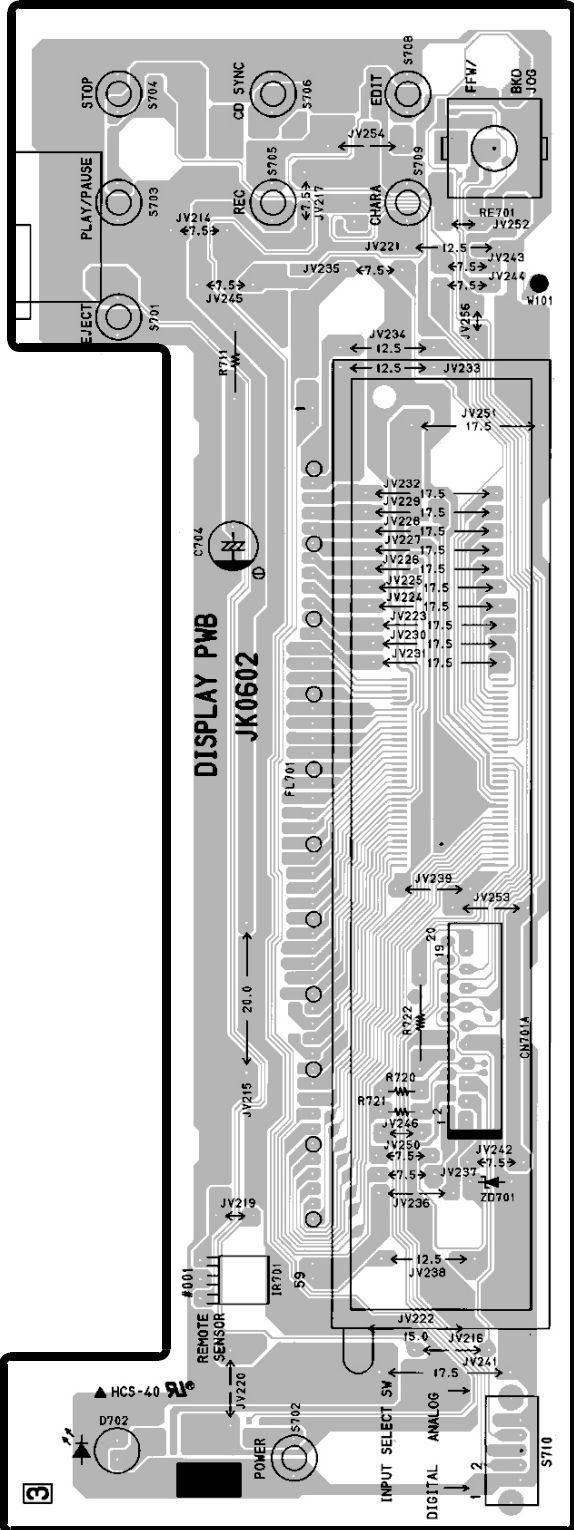


Soldering Side

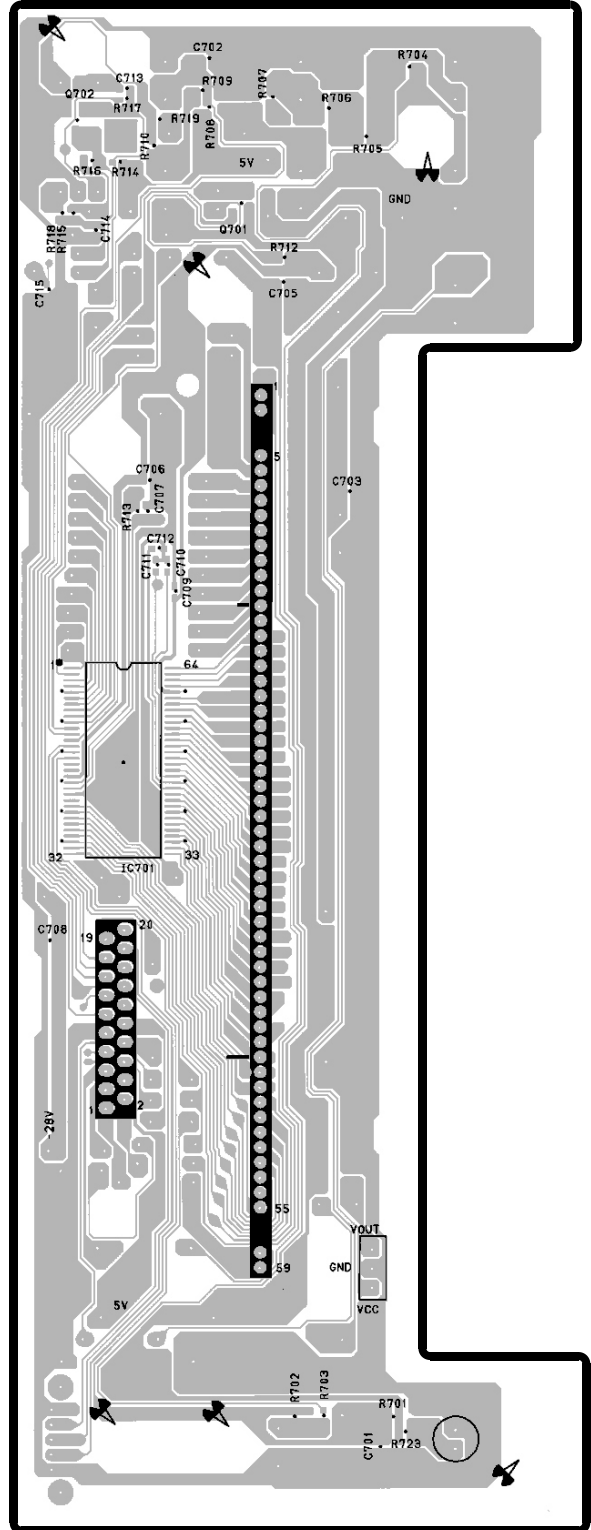


DISPLA Y PWB

Component Side

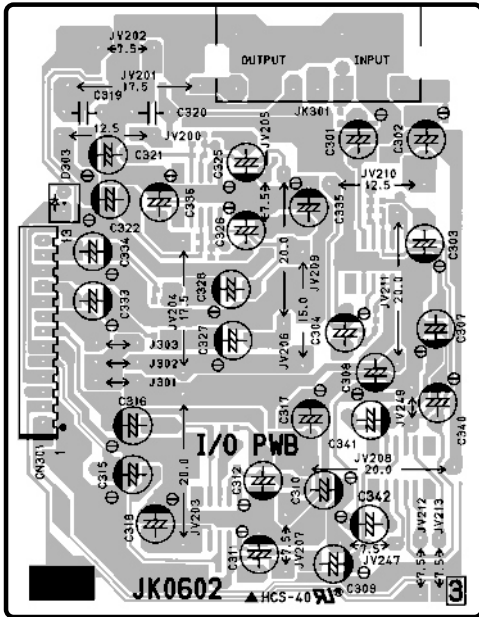


Soldering Side

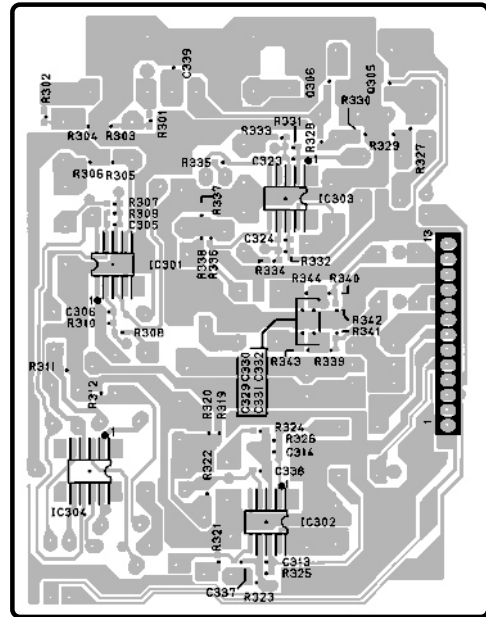


I/O PWB

Component Side

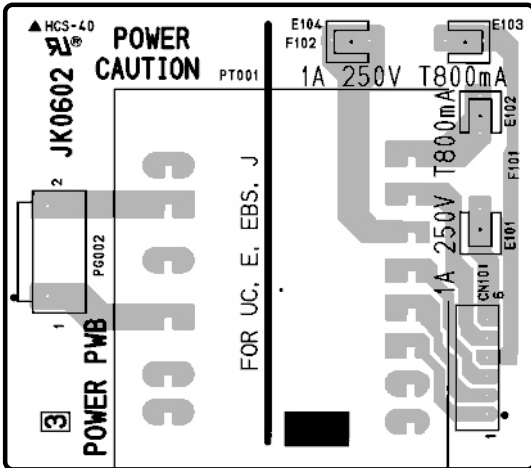


Soldering Side

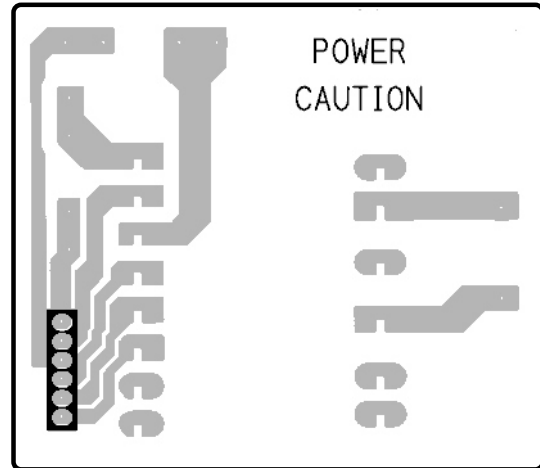


POWER PWB

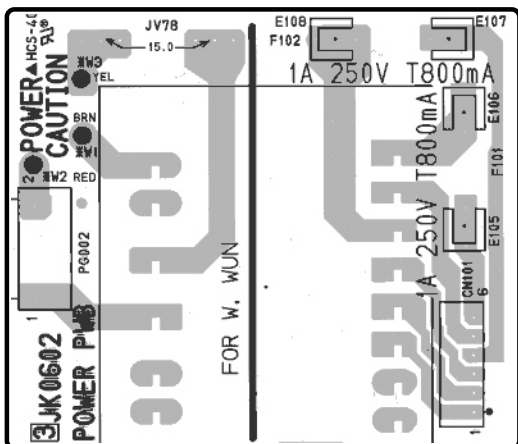
Component Side



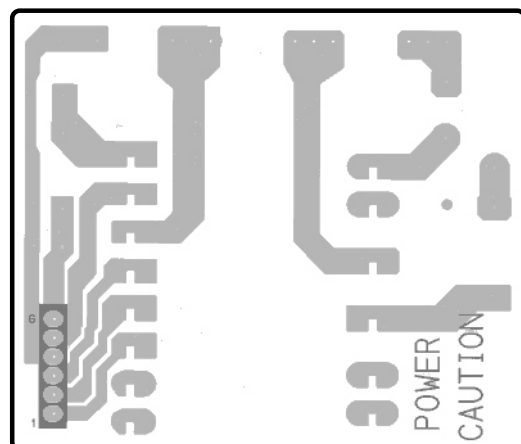
Soldering Side



Component Side

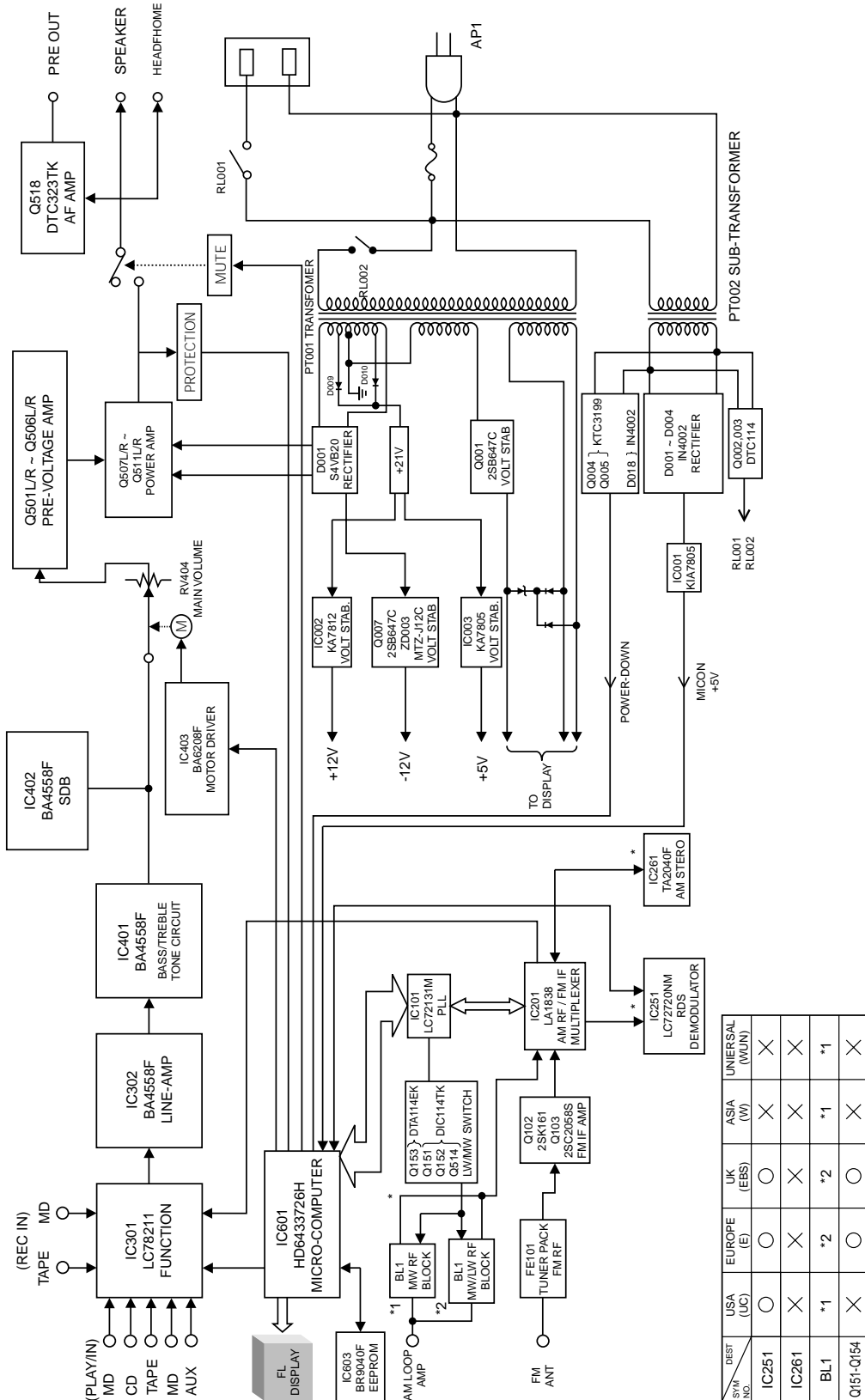


Soldering Side



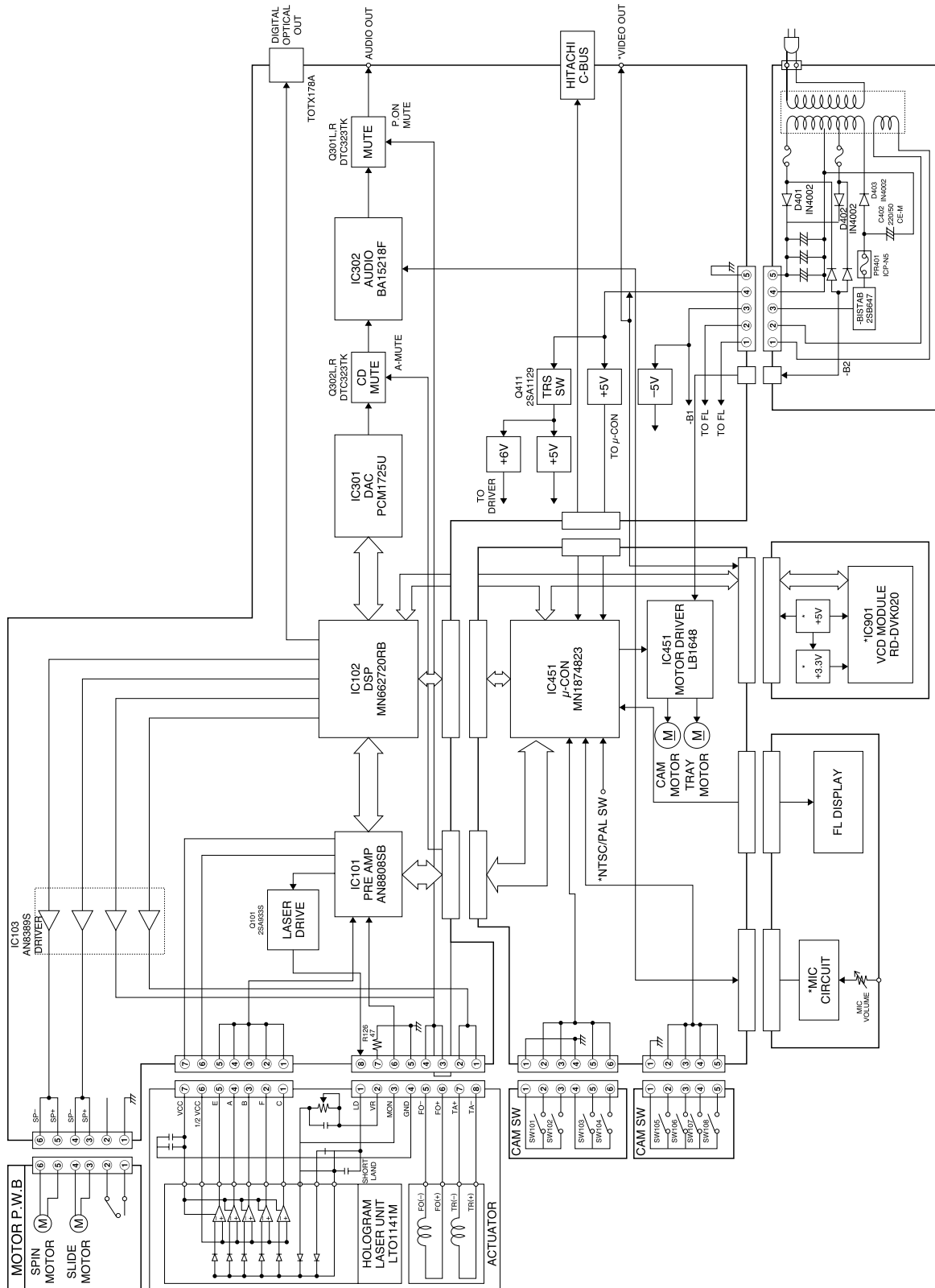
BLOCK DIAGRAM

• AM-FM TUNER AMPLIFIER (HTA-R100)

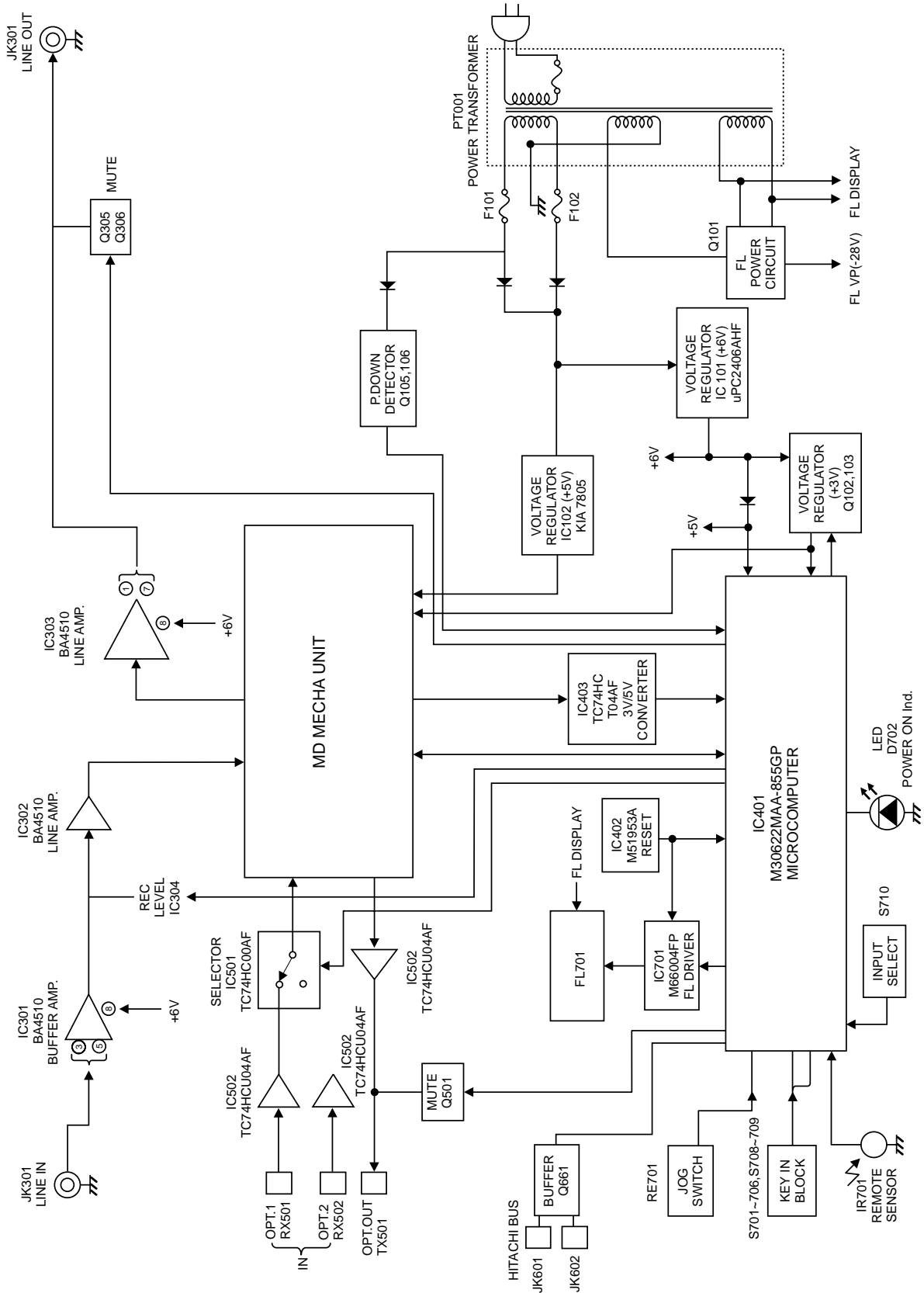


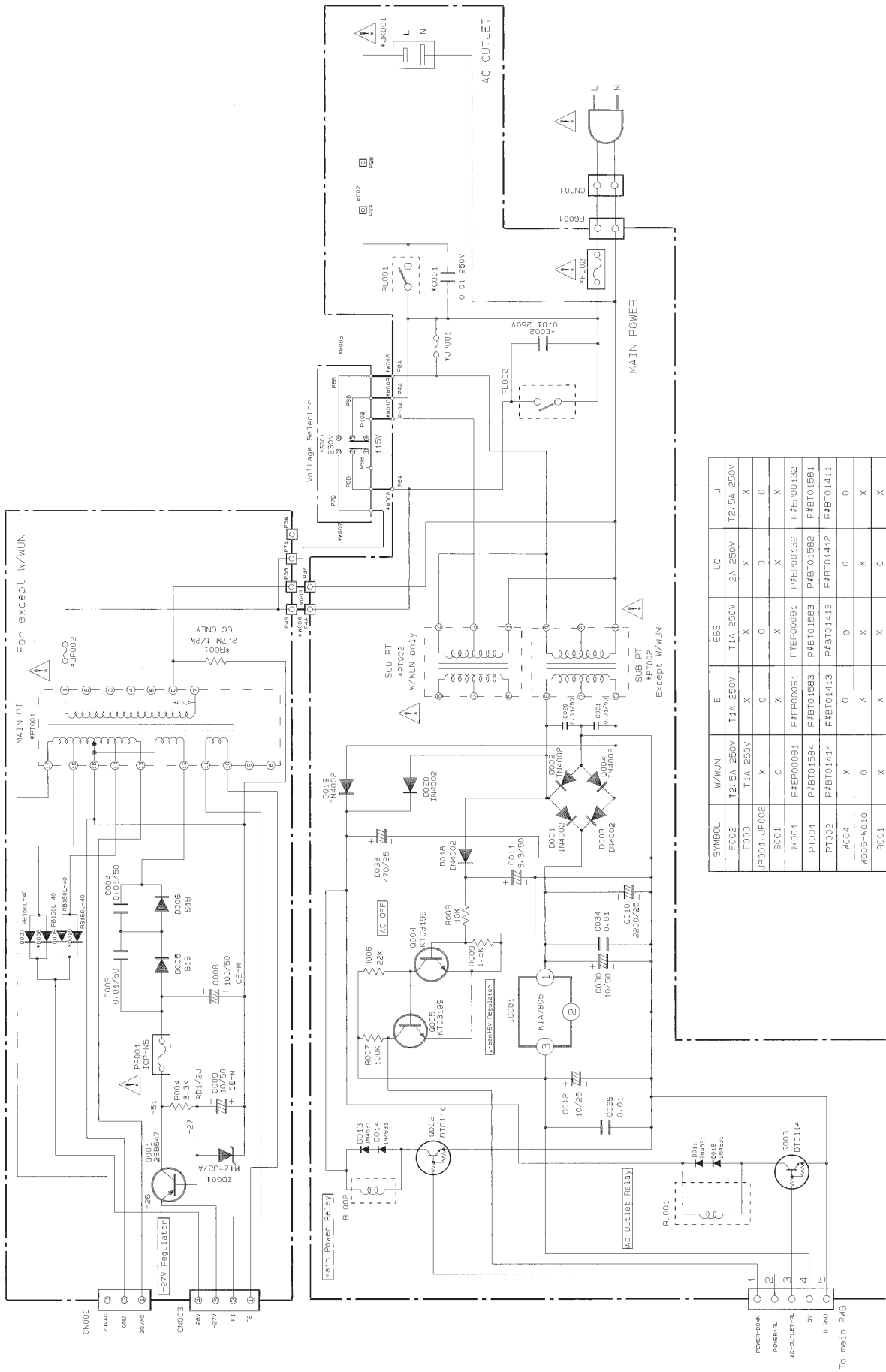
DEST	USA (LUC)	EUROPE (E)	UK (EBS)	ASIA (W)	UNIVERSAL (WUN)
IC251	○	○	○	×	×
IC261	×	×	×	×	×
BL1	*1	*2	*2	*1	*1
Q151-Q154	×	○	○	×	×

• CD CHANGER (DA-R100)



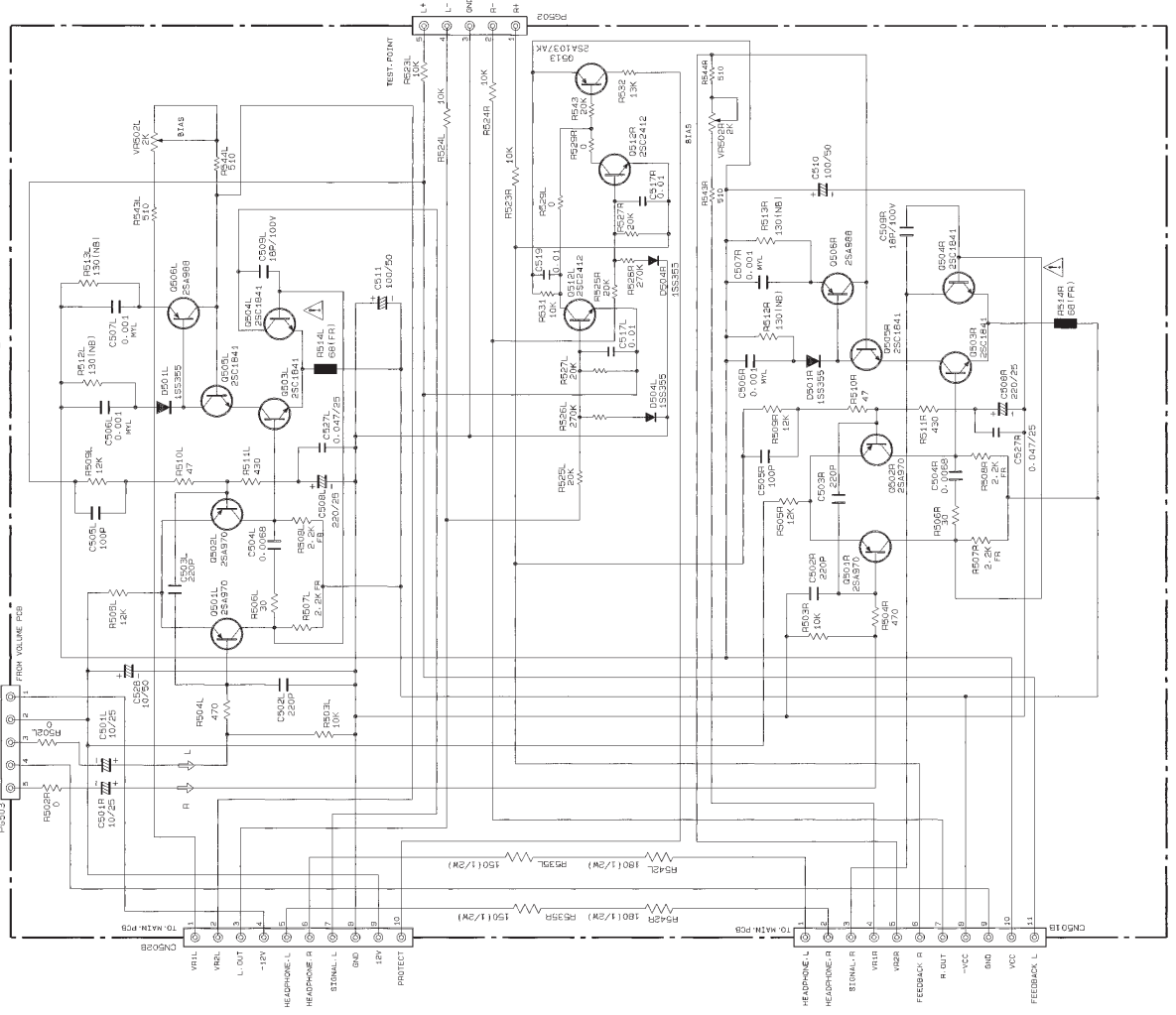
• MINI DISC RECORDER (HMD-R50)



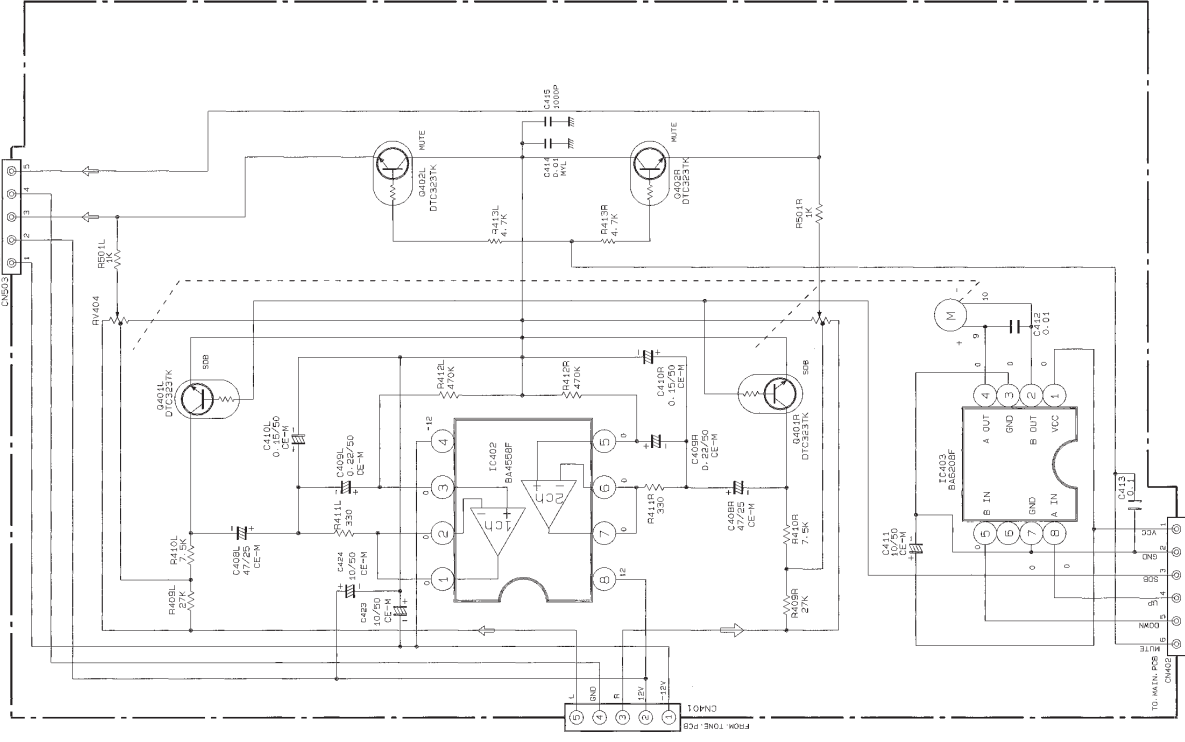


SYMBOL	W/WUN	E	EBS	UC	J
F002	T2.5A 250V	T1A 250V	T1A 250V	2A 250V	T2.5A 250V
F003	T1A 250V	X	X	X	X
JR001, JR002	X	0	0	0	0
S001	0	X	X	X	X
JK001	P#EP00091	P#EP00031	P#EP00051	P#EP00132	P#EP00132
PT001	P#BT015B4	P#BT015B3	P#BT015B3	P#BT015B2	P#BT015B1
PT002	P#BT01414	P#BT01413	P#BT01413	P#BT01412	P#BT01411
W004	X	0	0	0	0
W005-W010	0	X	X	X	X
W001	X	X	X	0	X

Pre - Voltage Amp.

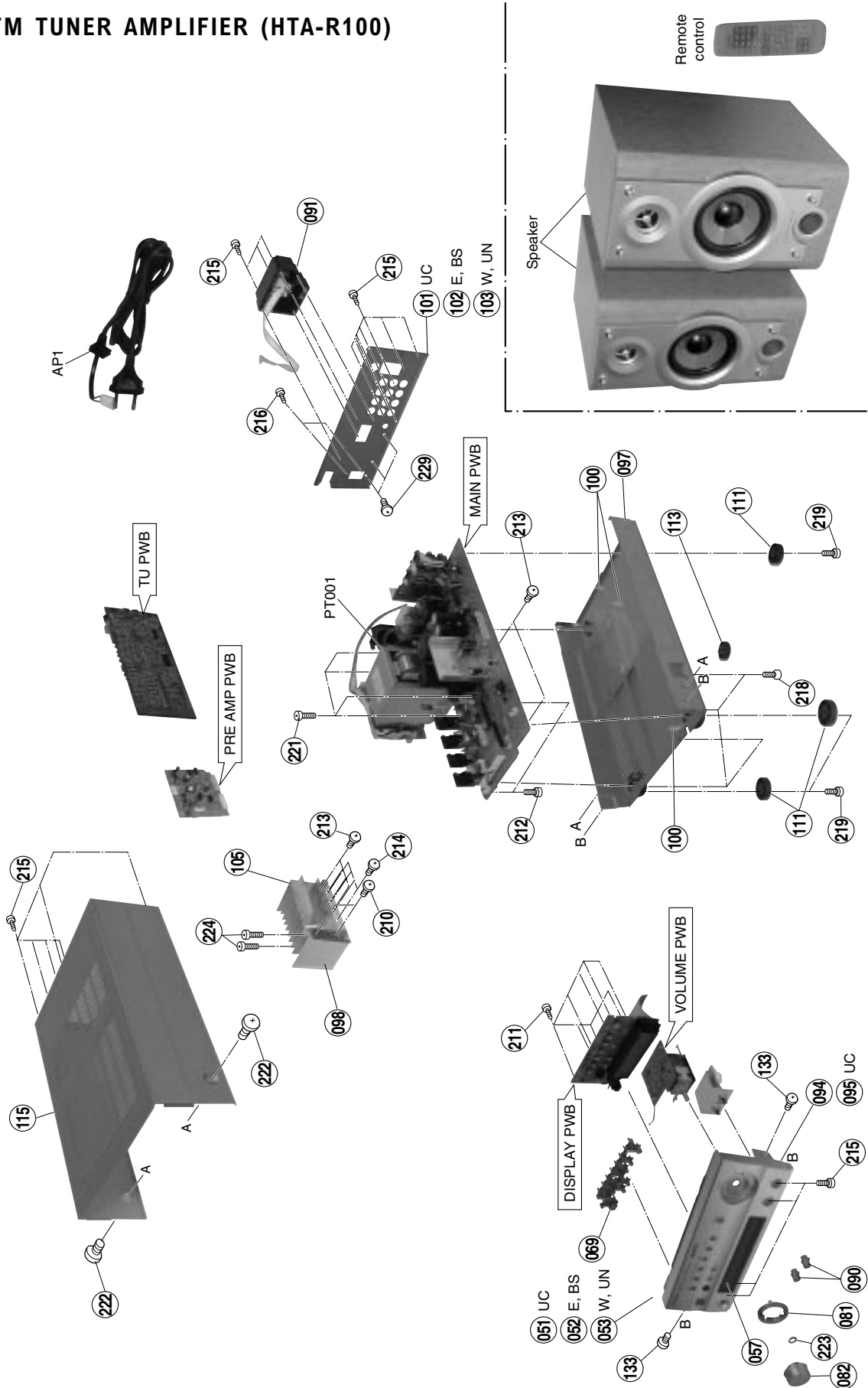


Volume Control



EXPLODED VIEW

• AM-FM TUNER AMPLIFIER (HTA-R100)



REPLACEMENT PARTS LIST

PRODUCT SAFETY NOTE: Components marked with a Δ have special characteristics important to safety. Before replacing any of these components, please read carefully the Service Manual.

ABBREVIATIONS	Capacitors	CK45: Disk Capacitor, CK73: Chip Capacitor (E-12 series), CK14: Axial Capacitor, CE: Electrolytic, CQ: Polyester Film Capacitor, CC73: Chip Capacitor (E-24 series)
	Resistors.....	RD: Axial Resistor, RN: Non-burn Resistor, RMC73: Chip Resistor, RE: Standing Resistor, FR: Fuse Resistor
	Semi-conductor	TR: Transistor, DI: Diode, ZD: Zener diode, VA: Varistor, TH: Thermistor, IC: IC.

SYMBOL NO.	PART NO.	DESCRIPTION
CAPACITORS:		
C002	0893239R	CHIP CAP 39F 10000PF Z 50V
C003	0893239R	CHIP CAP 39F 10000PF Z 50V
C004	AL01565Q	ELECT CAP 2200µF 16V (REA)
C005	0800007Y	ELECT CAP SSL 3.3µF 50V
C006	0893239R	CHIP CAP 39F 10000PF Z 50V
C007	0800003Y	ELECT CAP 1µF 50V
C008	0800051Y	ELECT CAP SSL 100µF 25V
C009	0893239R	CHIP CAP 39F 10000PF Z 50V
C010	AN00131S	CER CAP CQ 0.01µF 250V PA103-C
C011	AN00131S	CER CAP CQ 0.01µF 250V PA103-C
C012	0893239R	CHIP CAP 39F 10000PF Z 50V
C013	0893239R	CHIP CAP 39F 10000PF Z 50V
C014	0800053Y	ELECT CAP SSL 100µF 50V
C015	0800018Y	ELECT CAP SSL 10µF 50V
C016	0893239R	CHIP CAP 39F 10000PF Z 50V
C018	0893239R	CHIP CAP 39F 10000PF Z 50V
C019	0893239R	CHIP CAP 39F 10000PF Z 50V
C020	AL01801	ELECT CAP LP4 4700µF 50V
C021	AL01801	ELECT CAP LP4 4700µF 50V
C022	0893239R	CHIP CAP 39F 10000PF Z 50V
C023	0893239R	CHIP CAP 39F 10000PF Z 50V
C024	AL00478Q	ELECT CAP 4700µF 35V (RE3)
C025	AL00478Q	ELECT CAP 4700µF 35V (RE3)
C026	0800018Y	ELECT CAP SSL 10µF 50V
C027	0800018Y	ELECT CAP SSL 10µF 50V
C028	0800048R	ELECT CAP UVX 100µF 10V
C029	0800018Y	ELECT CAP SSL 10µF 50V
C030	0893246R	CHIP CAP 39F 47000PF Z 50V
C032	0800003Y	ELECT CAP SSL 1µF 50V
C034	0893246R	CHIP CAP 39F 47000PF Z 50V
C035	0800074N	ELECT CAP UVX 470µF 16V
C036	0893239R	CHIP CAP 39F 10000PF Z 50V
C037	0893239R	CHIP CAP 39F 10000PF Z 50V
C038	0800057R	ELECT CAP SME 220µF 10V
C101	0880009R	MYLAR-CAP 0.01µF K 50V AMZ T
C103	0893117R	CHIP CAP 39CH 22PF J 50V
C104	0893246R	CHIP CAP 39F 47000PF Z 50V
C105	0893126R	CHIP CAP 39CH 100PF K 50V
C106	0893239R	CHIP CAP 39F 10000PF Z 50V
C107	0893242R	CHIP CAP 39F 22000PF Z 50V
C108	0800042Y	ELECT CAP SSL 47µF 25V
C109	0284621R	ELECT CAP SME 0.47µF 50V (BP)
C111	0893239R	CHIP CAP 39F 10000PF Z 50V
C112	0800003Y	ELECT CAP SSL 1µF 50V
C113	0893239R	CHIP CAP 39F 10000PF Z 50V
C114	0893126R	CHIP CAP 39CH 100PF K 50V
C115	0893126R	CHIP CAP 39CH 100PF K 50V
C116	0893118R	CHIP CAP 39CH 27PF J 50V
C117	0893118R	CHIP CAP 39CH 27PF J 50V
C118	0893239R	CHIP CAP 39F 10000PF Z 50V
C119	0890044M	AXIAL CAP F 22000PF Z 25V
C151	0893179R	CHIP CAP 0.1µF 16V (E, EBS)
C151	0893239R	CHIP CAP 39F 10000PF Z 50V (UC, W, WUN)
C152	0893112R	CHIP CAP 39CH 9PF C 50V
C201	0800042Y	ELECT CAP SSL 47µF 25V
C202	0893246R	CHIP CAP 39F 47000PF Z 50V
C203	0893246R	CHIP CAP 39F 47000PF Z 50V
C204	0893246R	CHIP CAP 39F 47000PF Z 50V
C205	0893239R	CHIP CAP 39F 10000PF Z 50V
C206	0800003Y	ELECT CAP SSL 1µF 50V
C207	0893239R	CHIP CAP 39F 10000PF Z 50V
C208	0800018Y	ELECT CAP SSL 10µF 50V
C209	0893246R	CHIP CAP 39F 47000PF Z 50V
C210	0800003Y	ELECT CAP SSL 1µF 50V
C211	0800018Y	ELECT CAP SSL 10µF 50V
C212	0800018Y	ELECT CAP SSL 10µF 50V
C213	0800003Y	ELECT CAP SSL 1µF 50V
C214	0800001Y	ELECT CAP SSL 0.47µF 50V
C215	0800003Y	ELECT CAP SSL 1µF 50V
C216	0800034Y	ELECT CAP SSL 33µF 35V
C217	0893246R	CHIP CAP 39F 47000PF Z 50V

SYMBOL NO.	PART NO.	DESCRIPTION
C218	0893246R	CHIP CAP 39F 47000PF Z 50V
C219	0800007Y	ELECT CAP SSL 3.3µF 50V
C220	0800026Y	ELECT CAP SSL 22µF 50V
C221	0890086R	CER CAP 820P (W, WUN)
C221	0890081R	CER CAP B 330PF 50V K (UC, E, EBS)
C222	0893246R	CHIP CAP 39F 47000PF Z 50V
C223	0800018Y	ELECT CAP SSL 10µF 50V
C224	0880014R	MYLAR CAP 0.047µF (UC)
C224	0880013R	MYLAR-CAP 0.033µF K 50V AMZ (E, EBS, W, WUN)
C225	0880014R	MYLAR CAP 0.047µF (UC)
C225	0880013R	MYLAR-CAP 0.033µF K 50V AMZ (E, EBS, W, WUN)
C226	0893214R	CHIP CAP 39B 2700PF K 50V
C227	0893214R	CHIP CAP 39B 2700PF K 50V
C228	0800005Y	ELECT CAP SSL 2.2µF 50V
C229	0800005Y	ELECT CAP SSL 2.2µF 50V
C230	0800018Y	ELECT CAP SSL 10µF 50V
C232	0893239R	CHIP CAP 39F 10000PF Z 50V
C233	0890022M	AXIAL CAP B 100PF Z 50V
C251	0893117R	CHIP CAP GRM39CH 22PF J 50V (UC, E, EBS)
C252	0893117R	CHIP CAP GRM39CH 22PF J 50V (UC, E, EBS)
C253	0893239R	CHIP CAP 39F 10000PF Z 50V (UC, E, EBS)
C254	0800042Y	ELECT CAP SSL 47µF 25V (UC, E, EBS)
C255	0893205R	CHIP CAP 39B 560PF J 50V (UC, E, EBS)
C256	0800042Y	ELECT CAP SSL 47µF 25V (UC, E, EBS)
C257	0893239R	CHIP CAP 39F 10000PF Z 50V (UC, E, EBS)
C258	0800018Y	ELECT CAP SSL 10µF 50V (UC, E, EBS)
C259	0893133R	CHIP CAP 39CH 330PF J 50V (UC, E, EBS)
C301	0893126R	CHIP CAP GRM 39CH 100PF K 50V
C302	0893126R	CHIP CAP GRM 39CH 100PF K 50V
C303	0893126R	CHIP CAP GRM 39CH 100PF K 50V
C304	0893126R	CHIP CAP GRM 39CH 100PF K 50V
C305	0893126R	CHIP CAP GRM 39CH 100PF K 50V
C306	0893126R	CHIP CAP GRM 39CH 100PF K 50V
C308	AL01579R	ELECT CAP (SEA) 1µF-M 50V
C309	AL01579R	ELECT CAP (SEA) 22µF 50V
C310	AL01579R	ELECT CAP (SEA) 1µF-M 50V
C311	AL01579R	ELECT CAP (SEA) 1µF-M 50V
C313	AL01598R	ELECT CAP (SEA) 22µF 50V
C314	0800026Y	ELECT CAP SSL 22µF 50V
C315	0800026Y	ELECT CAP SSL 22µF 50V
C316	AL01598R	ELECT CAP (SEA) 22µF 50V
C317	0893179R	CHIP CAP 39B 10000PF K 16V
C318	0893179R	CHIP CAP 39B 10000PF K 16V
C319	0893214R	CHIP CAP 39B 2700PF K 50V
C320	AL01579R	ELECT CAP (SEA) 1µF-M 50V
C321	AL01598R	ELECT CAP (SEA) 22µF 50V
C322	AL01579R	ELECT CAP (SEA) 1µF-M 50V
C323	AL01579R	ELECT CAP (SEA) 1µF-M 50V
C324	AL01579R	ELECT CAP (SEA) 1µF-M 50V
C325	AL01579R	ELECT CAP (SEA) 1µF-M 50V
C326	AL01598R	ELECT CAP (SEA) 22µF 50V
C327	AL01579R	ELECT CAP (SEA) 1µF-M 50V
C328	AL01579R	ELECT CAP (SEA) 1µF-M 50V
C329	AL01579R	ELECT CAP (SEA) 1µF-M 50V
C330	AL01579R	ELECT CAP (SEA) 1µF-M 50V
C331	AL01579R	ELECT CAP (SEA) 1µF-M 50V
C332	0893214R	CHIP CAP 39B 2700PF K 50V
C333	0893179R	CHIP CAP 39B 10000PF K 16V
C334	0893179R	CHIP CAP 39B 10000PF K 16V
C335	AL01598R	ELECT CAP (SEA) 22µF 50V
C336	AL01592R	ELECT CAP (SEA) 10µF-M 50V
C337	AL01592R	ELECT CAP (SEA) 10µF-M 50V
C340	0893232R	CHIP CAP C1608 0.1µF 25V
C345	AL01592R	ELECT CAP (SEA) 10µF-M 50V
C346	0800007Y	ELECT CAP 3.3µF 50V
C350	0893208R	CHIP CAP 39B 1000PF J 50V
C351	0893208R	CHIP CAP 39B 1000PF J 50V

SYMBOL NO.	PART NO.	DESCRIPTION
C352	0893131R	CHIP CAP 39B 220PF J 50V
C353	0893131R	CHIP CAP 39B 220PF J 50V
C354	0893239R	CHIP CAP 39F 10000PF Z 50V
C355	0893208R	CHIP CAP 39B 1000PF J 50V
C356	0893208R	CHIP CAP 39B 1000PF J 50V
C357	0893131R	CHIP CAP 39B 220PF J 50V
C358	0893131R	CHIP CAP 39B 220PF J 50V
C359	0893239R	CHIP CAP 39F 10000PF Z 50V
C360	0893208R	CHIP CAP 39B 1000PF J 50V
C361	0893208R	CHIP CAP 39B 1000PF J 50V
C362	0893239R	CHIP CAP 39F 10000PF Z 50V
C365	0800042Y	ELECT CAP SSL 47µF 25V
C501	AL01582R	ELECT CAP (SEA) 2.2µF 50V
C502	0893135R	CHIP CAP 39CH 470PF J 50V
C503	AL01582R	ELECT CAP (SEA) 2.2µF 50V
C504	0893135R	CHIP CAP 39CH 470PF J 50V
C505	0800053Y	ELECT CAP SSL 100µF 50V
C506	0893131R	CHIP CAP 39CH 220PF J 50V
C507	0800053Y	ELECT CAP SSL 100µF 50V
C508	0893131R	CHIP CAP 39CH 220PF J 50V
C509	0800053Y	ELECT CAP SSL 100µF 50V
C510	0800053Y	ELECT CAP SSL 100µF 50V
C511	0890004M	AXIAL CAPSL 3.3PF K 50V
C512	0890004M	AXIAL CAPSL 3.3PF K 50V
C513	0800064R	ELECT CAP SME 330µF 6.3V
C514	0880016R	CAP POLY FILM 0.1µF K 50V
C515	0880016R	CAP POLY FILM 0.1µF K 50V
C516	0800053Y	ELECT CAP SSL 100µF 50V
C517	0800053Y	ELECT CAP SSL 100µF 50V
C518	0800053Y	ELECT CAP SSL 100µF 50V
C519	0800053Y	ELECT CAP SSL 100µF 50V
C520	0893208R	CHIP CAP 39B 1000PF J 50V
C521	0893208R	CHIP CAP 39B 1000PF J 50V
C522	0893232R	CHIP CAP C1608 0.1µF 25V (E, EBS)
C523	0893239R	CHIP CAP 39F 10000PF Z 50V
C524	0880009R	MYLAR-CAP 0.01µF K 50V AMZ T
C525	0880009R	MYLAR-CAP 0.01µF K 50V AMZ T
C526	0893239R	CHIP CAP 39F 10000PF Z 50V
C527	0893239R	CHIP CAP 39F 10000PF Z 50V
C601	0893239R	CHIP CAP 39F 10000PF Z 50V
C602	0893239R	CHIP CAP 39F 10000PF Z 50V
C603	0800073R	ELECT CAP SME 470µF 10V
C604	0225037R	CHIP CAP CH 1608 20PF J 50V
C605	0225037R	CHIP CAP CH 1608 20PF J 50V
C606	0893239R	CHIP CAP 39F 10000PF Z 50V
C610	0893119R	CHIP CAP 39CH 1608 33PF J 50V
C612	0893239R	CHIP CAP 39F 10000PF Z 50V
C613	0893239R	CHIP CAP 39F 10000PF Z 50V
C622	0893232R	CHIP CAP C1608 0.1µF 25V
C701	AL01579R	ELECT CAP (SEA) 1µF-M 50V
C702	0893126R	CHIP CAP 39CH 100PF K 50V
C703	0893126R	CHIP CAP 39CH 100PF K 50V
C704	AL01579R	ELECT CAP (SEA) 1µF-M 50V
C705	0800016Y	ELECT CAP SSL 10µF 25V
C706	0893239R	CHIP CAP 39F 10000PF Z 50V
C707	0800016Y	ELECT CAP SSL 10µF 25V
C901	0893232R	CHIP CAP 39F 10000PF Z 50V
C902	AL01613R	CE04W1E470MB (SEA)
C903	0893117R	CHIP CAP 39CH 22PF J 50V
C904	AL01613R	CE04W1E470MB (SEA)
C905	0893239R	CHIP CAP 39F 10000PF Z 50V
C906	0893239R	CHIP CAP 39F 10000PF Z 50V
C907	0890043M	AXIAL-CAP Y 10000PF M 16V
C908	0890043M	AXIAL-CAP Y 10000PF M 16V
RESISTORS:		
R001	H139006	RES 1/2W 2.7MΩ (UC)
R002	0790051R	CHIP RES RNC 1/16W 10K-J
R003	0790044R	CHIP RES RNC 1/16W 3.3K-J
R004	0790055R	CHIP RES RNC 1/16W 22K-J
R005	0790051R	CHIP RES RNC 1/16W 10K-J
R006	0790046R	CHIP RES RNC 1/16W 4.7K-J
R007	0790051R	CHIP RES RNC 1/16W 10K-J
R008	0790046R	CHIP RES RNC 1/16W 4.7K-J
R009	AT01123R	FLAME RETARDANT RES 3.3K 1W NB
R010	0790024R	CHIP RES RNC 1/16W 100-J
R011	0790024R	CHIP RES RNC 1/16W 100-J
R013	AT01121R	FLAME RETARDANT RES 1W 2.7K
R014	AT01121R	FLAME RETARDANT RES 1W 2.7K
R015	AT01109R	FLAME RETARDANT RES 1W 1K-J
R016	AT01109R	FLAME RETARDANT RES 1W 1K-J
R101	0790037R	CHIP RES 1/16W 1K-J
R102	AT01246T	FLAME RETARDANT RES 1/4 120J
R103	AT01244T	FLAME RETARDANT RES 1/4 100J
R104	0790047R	CHIP RES RNC 1/16W 5.6K-J
R105	0790042R	CHIP RES RNC 1/16W 2.2K-J
R106	0790037R	CHIP RES 1/16W 1K-J
R107	0790028R	CHIP RES RNC 1/16W 220-J
R108	0790051R	CHIP RES RNC 1/16 10K-J
R109	0790051R	CHIP RES RNC 1/16 10K-J
R110	0790032R	CHIP RES RNC 1/16W 390-J
R111	0790031R	CHIP RES RNC 1/16W 330-J

SYMBOL NO.	PART NO.	DESCRIPTION
R112	0790031R	CHIP RES RNC 1/16W 330-J
R113	0790028R	CHIP RES RNC 1/16W 220-J
R114	0790043R	CHIP RES RNC 1/16W 2.7K-J
R115	0790031R	CHIP RES RNC 1/16W 330-J
R116	0790037R	CHIP RES 1/16W 1K-J
R117	0790024R	CHIP RES RNC 1/16W 100-J
R201	0790049R	CHIP RES 1/16W 8.2K-J
R202	0790051R	CHIP RES 1/16W 10K-J
R203	0790051R	CHIP RES 1/16W 10K-J
R204	0790032R	CHIP RES RNC 1/16W 390-J
R206	0196035R	CHIP RES 1/16W 51-J
R207	0790046R	CHIP RES 4.7K-J
R208	0790051R	CHIP RES 10K-J
R209	0196079R	CHIP RES 1/16W 3K-J
R210	0790046R	CHIP RES 4.7K-J
R211	0790046R	CHIP RES 4.7K-J
R212	0790047R	CHIP RES 5.6K-J (E, EBS, W, WUN)
R212	0790045R	CHIP RES 3.9K-J (UC)
R213	0790049R	CHIP RES 8.2K-J
R214	0790044R	CHIP RES 3.3K-J
R215	0790044R	CHIP RES 3.3K-J
R216	0790037R	CHIP RES 1/16W 1K-J
R217	0790037R	CHIP RES 1/16W 1K-J
R218	0790032R	CHIP RES RNC 1/16W 390-J
R219	0790032R	CHIP RES RNC 1/16W 390-J
R220	0790039R	CHIP RES RNC 1/16W 1.5K-J
R221	0790039R	CHIP RES RNC 1/16W 1.5K-J
R222	0790047R	CHIP RES 5.6K-J
R301	0790024R	CHIP RES RNC 1/16W 100-J
R302	0790024R	CHIP RES RNC 1/16W 100-J
R305	0790024R	CHIP RES RNC 1/16W 100-J
R306	0790024R	CHIP RES RNC 1/16W 100-J
R309	0790024R	CHIP RES RNC 1/16W 100-J
R310	0790024R	CHIP RES RNC 1/16W 100-J
R313	0790059R	CHIP RES RNC 1/16W 47K-J
R314	0790042R	CHIP RES RNC 1/16W 2.2K-J
R315	0790042R	CHIP RES RNC 1/16W 2.2K-J
R316	0790045R	CHIP RES RNC 1/16W 3.9K-J
R317	0790045R	CHIP RES RNC 1/16W 3.9K-J
R318	0790061R	CHIP RES RNC 1/16W 56K-J
R319	0790061R	CHIP RES RNC 1/16W 56K-J
R320	0790051R	CHIP RES RNC 1/16W 10K-J
R321	0790051R	CHIP RES RNC 1/16W 10K-J
R322	0790001R	CHIP RES 1/16W 0-J
R323	0790001R	CHIP RES 1/16W 0-J
R324	0790001R	CHIP RES 1/16W 0-J
R325	0790001R	CHIP RES 1/16W 0-J
R329	0790051R	CHIP RES RNC 1/16W 10K-J
R330	0700048M	RES CAR FILM 1/16W 3.9KJ
R331	0700048M	RES CAR FILM 1/16W 3.9KJ
R332	0790046R	CHIP RES RNC 1/16W 4.7K-J
R333	0790046R	CHIP RES RNC 1/16W 4.7K-J
R334	0790045R	CHIP RES RNC 1/16W 3.9K-J
R335	0790045R	CHIP RES RNC 1/16W 3.9K-J
R336	0790046R	CHIP RES RNC 1/16W 4.7K-J
R337	0790046R	CHIP RES RNC 1/16W 4.7K-J
R338	0790059R	CHIP RES RNC 1/16W 47K-J
R339	AT01244T	FLAME RETARDANT RES 1/4 100J
R340	0700047M	RES CAR 1/16W 3.3KJ T
R501	0790037R	CHIP RES RNC 1/16W 1K-J
R502	0790061R	CHIP RES RNC 1/16W 56K-J
R503	0790037R	CHIP RES RNC 1/16W 1K-J
R504	0790061R	CHIP RES RNC 1/16W 56K-J
R505	0790041R	CHIP RES RNC 1/16W 1.8K-J
R506	0700054M	RES CAR FILM 1/16W 10KJ
R507	0790041R	CHIP RES RNC 1/16W 1.8K-J
R508	AT01171M	FUSING RES 1/4W 100 OHM-J
R509	AT01171M	FUSING RES 1/4W 100 OHM-J
R514	0700064M	RES CAR FILM 1/16W 56KJ
R515	0700064M	RES CAR FILM 1/16W 56KJ
R516	0790055R	CHIP RES RNC 1/16W 22K-J
R517	0790055R	CHIP RES RNC 1/16W 22K-J
R518	0790051R	CHIP RES RNC 1/16W 10K-J
R520	AT01047R	FLAME RETARDANT RES 1W 4.7-J
R521	AT01047R	FLAME RETARDANT RES 1W 4.7-J
R522	AT01047R	FLAME RETARDANT RES 1W 4.7-J
R523	AT01047R	FLAME RETARDANT RES 1W 4.7-J
R524	AT03705T	FUSE RESISTOR 1/4W 390-J
R525	AT01096R	FLAME RETARDANT RES 1W 330-J
R526	AT01096R	FLAME RETARDANT RES 1W 330-J
R527	0187072M	RES CAR FILM 1/16W 2K-J
R528	0187072M	RES CAR FILM 1/16W 2K-J
R530	0790043R	CHIP RES RNC 1/16W 2.7K-J
R531	0790055R	CHIP RES RNC 1/16W 22K-J
R532	0790055R	CHIP RES RNC 1/16W 22K-J
R535	0790055R	CHIP RES RNC 1/16W 22K-J
R601	0790037R	CHIP RES RNC 1/16W 1K-J
R602	0790037R	CHIP RES RNC 1/16W 1K-J
R603	0790037R	CHIP RES RNC 1/16W 1K-J
R604	0790037R	CHIP RES RNC 1/16W 1K-J
R605	0790037R	CHIP RES 1/16W 1K (W,UN)

SYMBOL NO.	PART NO.	DESCRIPTION
R605	0790038R	CHIP RES RNC 1/16W 1.2K-J (E, EBS)
R606	0196075R	CHIP RES 1/16W 2K-J (E, EBS)
R606	0790059R	CHIP RES RNC 1/16W 47K (UC)
R606	0790031R	CHIP RES RNC 1/16W 330K (W, WUN)
R607	0790059R	CHIP RES RNC 1/16W 47K-J
R608	0790037R	CHIP RES RNC 1/16W 1K-J
R609	0790064R	CHIP RES RNC 1/16W 100K-J
R610	0790059R	CHIP RES 1/16W 47K (W, WUN)
R611	0700041M	RES CAR FILM 1/16W 1K-J
R612	0700041M	RES CAR FILM 1/16W 1.0KJ
R613	0700041M	RES CAR FILM 1/16W 1.0KJ
R614	0700041M	RES CAR FILM 1/16W 1.0KJ
R615	0790051R	CHIP RES RNC 1/16W 10K-J
R616	0790033R	CHIP RES RNC 1/16W 470-J
R617	0790051R	CHIP RES RNC 1/16W 10K-J
R618	0790051R	CHIP RES RNC 1/16W 10K-J
R619	0790051R	CHIP RES RNC 1/16W 10K-J
R622	0790046R	CHIP RES RNC 1/16W 4.7K-J
R623	0790033R	CHIP RES RNC 1/16W 470-J
R624	0790001R	CHIP RES 1/16W 0-J
R625	0790001R	CHIP RES 1/16W 0-J
R626	0790001R	CHIP RES 1/16W 0-J
R627	0790001R	CHIP RES 1/16W 0-J
R630	0790059R	CHIP RES RNC 1/16W 47K-J
R631	0790059R	CHIP RES RNC 1/16W 47K-J
R632	0700063M	RES CAR FILM 1/16W 47KJ
R634	0790059R	CHIP RES RNC 1/16W 47K-J
R635	0700067M	RES CAR FILM 1/16W 100KJ
R640	0790064R	CHIP RES RNC 1/16W 100K-J
R641	0790064R	CHIP RES RNC 1/16W 100K-J
R642	0790059R	CHIP RES RNC 1/16W 47K-J
R643	0790051R	CHIP RES RNC 1/16W 10K-J
R644	0790059R	CHIP RES RNC 1/16W 47K-J
R645	0790055R	CHIP RES RNC 1/16W 22K-J
R646	0790054R	CHIP RES RNC 1/16W 18K-J
R647	0790056R	CHIP RES RNC 1/16W 27K-J
R648	0700041M	RES CAR FILM 1/16W 1K-J
R649	0700041M	RES CAR FILM 1/16W 1K-J
R650	0700041M	RES CAR FILM 1/16W 1K-J
R651	0700041M	RES CAR FILM 1/16W 1K-J
R652	0700041M	RES CAR FILM 1/16W 1K-J
R701	0790046R	CHIP RES RNC 1/16W 4.7K-J
R702	0790037R	CHIP RES RNC 1/16W 1K-J
R703	0790059R	CHIP RES RNC 1/16W 47K-J
R704	0790059R	CHIP RES RNC 1/16W 47K-J
R705	0790046R	CHIP RES RNC 1/16W 4.7K-J
R706	0790037R	CHIP RES RNC 1/16W 1K-J
R707	0790051R	CHIP RES RNC 1/16W 10K-J
R708	0790042R	CHIP RES RNC 1/16W 2.2K-J
R901	0790036R	CHIP RES RNC 1/16W 820-J
R902	H129547	CAR RES 1/4W 47J T
R903	0790026R	CHIP RES RNC 1/16W 150-J
R904	0790027R	CHIP RES RNC 1/16W 180-J
R905	0790029R	CHIP RES RNC 1/16W 270-J
R906	0790032R	CHIP RES RNC 1/16W 390-J
R907	0790032R	CHIP RES RNC 1/16W 390-J
R908	0790026R	CHIP RES RNC 1/16W 150-J
R909	0790029R	CHIP RES RNC 1/16W 270-J
R910	0790027R	CHIP RES RNC 1/16W 180-J
R911	0790026R	CHIP RES RNC 1/16W 150-J
R912	0790027R	CHIP RES RNC 1/16W 180-J
R913	0790029R	CHIP RES RNC 1/16W 270-J
R914	0790032R	CHIP RES RNC 1/16W 390-J
R916	0790047R	CHIP RES RNC 1/16W 5.6K-J
R917	0790037R	CHIP RES RNC 1/16W 1K-J
R918	0790037R	CHIP RES RNC 1/16W 1K-J
R919	0790037R	CHIP RES RNC 1/16W 1K-J
R920	0790051R	CHIP RES RNC 1/16W 10K-J
R921	0790051R	CHIP RES RNC 1/16W 10K-J
R922	0790064R	CHIP RES RNC 1/16W 100K-J
ICs:		
IC001	CP02411	IC KIA7805API
IC002	CP02412	IC KIA7806API
IC003	CP02414	IC KIA7809PI
IC004	CP02416	IC KIA7812API
IC101	CK09831R	IC LC72131MD-TRM (D-M3)
IC201	CP04502	IC LA1838
IC202	CP02414	IC KIA7809PI
IC251	CK09841R	IC LC72720NM-TLM (D-M3) (E, EBS, UC)
IC301	CK33601R	IC LC75342M
IC302	CK01812R	IC BU4066BCF-E2
IC303	CK01812R	IC BU4066BCF-E2
IC501	CP06871	IC STK 402-450
IC601	CK33644	UCON IC MN101C12G-PT3
IC602	CK07611R	IC BR9040F
IC603	CP00712R	IC KIA7045P
IC901	CK33611	FLD DRIVER IC (LC75725E)
TRANSISTORS:		
Q001	2325691R	TRS. CHIP 2SC2412KT146R
Q002	2325691R	TRS. CHIP 2SC2412KT146R
Q003	2325691R	TRS. CHIP 2SC2412KT146R

SYMBOL NO.	PART NO.	DESCRIPTION
Q004	2325691R	TRS. CHIP 2SC2412KT146R
Q005	CA00661R	TRS. KTA1267GR(AT)
Q101	CA00291R	TRS DTA114EKT146
Q102	CA01121R	TRS 2SK161-Y (IPE4)
Q103	CA01141R	TRS 2SC2058STPQ
Q104	CA00291R	TRS DTA114EKT146
Q105	CA00581R	TRS DTC323TKT146
Q106	CA00581R	TRS DTC323TKT146
Q107	CA00581R	TRS DTC323TKT146
Q108	CA00581R	TRS DTC323TKT146
Q109	2316361R	TRS DTC114EKT46
Q151	CA01151R	TRANS DTC114TKT146 (E, EBS)
Q152	CA01151R	TRANS DTC114TKT146 (E, EBS)
Q153	CA00291R	TRS DTA114EKT146 (E, EBS)
Q154	CA01151R	TRANS DTC114TKT146 (E, EBS)
Q301	2316361R	TRS DTC114EKT46
Q302	2316361R	TRS DTC114EKT46
Q303	2316361R	TRS DTC114EKT46
Q304	2316361R	TRS DTC114EKT46
Q305	2315422R	TRS 2SD1468STDTP
Q306	2315422R	TRS 2SD1468STDTP
Q307	CA01151R	TRS. DTC114TKT146
Q308	CA01151R	TRS. DTC114TKT146
Q309	CA01151R	TRS. DTC114TKT146
Q310	CA01151R	TRS. DTC114TKT146
Q501	2325691R	TRS. CHIP 2SC2412KT146R
Q502	CA00691R	TRS. 2SA1037AKT146R
Q503	2325691R	TRS. CHIP 2SC2412KT146R
Q504	CA00581R	TRS. DTC323TKT146
Q505	CA00581R	TRS. DTC323TKT146
Q506	2325691R	TRS. CHIP 2SC2412KT146R
Q601	2316361R	TR DTC114EKT
Q602	2325691R	TRS. CHIP 2SC2412KT146R
Q603	2325691R	TRS. CHIP 2SC2412KT146R
Q701	2316361R	TRS DTC114EKT46
Q702	CA00691R	TRS. 2SA1037AKT146R
Q703	2319152	TRS. HIT5610C
DIODES:		
D001	CH02051M	DIODE IN4002 TAPE
D002	CH02051M	DIODE IN4002 TAPE
D003	CH02051M	DIODE IN4002 TAPE
D004	CH02051M	DIODE IN4002 TAPE
D005	CH02051M	DIODE IN4002 TAPE
D006	2398921T	DIODE ISS133T-72
D007	2398921T	DIODE ISS133T-72
D008	CH02051M	DIODE IN4002 TAPE
D009	CH02051M	DIODE IN4002 TAPE
D010	CH02051M	DIODE IN4002 TAPE
D011	2342062	DIODE D3SBA60-4103
D012	CJ00371	BRIDGE RECTIFIER RS203L
D013	CH02051M	DIODE IN4002 TAPE
D014	CH02051M	DIODE IN4002 TAPE
D016	CH01971	LED 2X5MM RED WITH STOPPER
D017	CH01971	LED 2X5MM RED WITH STOPPER
D101	CC0003R	DIODE CHIP ISS355TE-17 (T)
D201	CC0003R	DIODE CHIP ISS355TE-17 (T)
D502	2398921T	DIODE ISS133T-72
D602	2398921T	DIODE ISS133T-72
D611	2398921T	DIODE ISS133T-72
D612	2398921T	DIODE ISS133T-72
D701	CH02051M	DIODE IN4002 TAPE
D702	2398921T	DIODE ISS133T-72
D703	CH02051M	DIODE IN4002 TAPE
D901	CH00072	LED SLR342VC3F
ZD001	2348271M	DIODE MTZJT-27A
ZD002	2331795M	ZENER DIODE HZ5B2
ZD003	2348193M	DIODE MTZJ12C
ZD004	2331811M	ZENER DIODE HZ7A1
ZD301	2331823M	ZENER DIODE HZ9A3
ZD501	2348141M	ZENER DIODE MTZ JT 7.5A
ZD502	2348141M	ZENER DIODE MTZ JT 7.5A
TRANSFORMERS:		
△PT1	BT01561	POWER TRANSFORMER (E)
△PT1	BT01562	POWER TRANSFORMER (UC)
△PT1	BT01564	POWER TRANSFORMER (W, WUN)
△PT001	BT01413	SUB TRANSFORMER [FOR E, E(BS)]
△PT001	BT01412	SUB TRANSFORMER (UC)
△PT001	BT01414	SUB TRANSFORMER [FOR W, W(UN)]
FUSES:		
△F001	FN00301	FUSE T1.25A (W, WUN)
△F001	FN00221	FUSE T630MA (E, EBS)
△F001	FN00234	FUSE 1.6A 250V (UC)
△F002	FN00221	FUSE T630mA (W, WUN)
△F003	FN00225	FUSE T3.15A 250V (E, EBS, W, WUN)
△F003	FN00232	FUSE 3A 250V (UC)
COILS:		
BL1	BH01501	MW/LW RF BLOCK (E, EBS)
BL1	BH00532	AM RF BLOCK [FOR UC, W, W(UN)]
L501	2227362	TRAP COIL 3UH

SYMBOL NO.	PART NO.	DESCRIPTION
L502	2227362	TRAP COIL 3UH
T201	BJ00252	AM IFT COIL
T203	BJ00411	FM MPX LPF. [FOR E, E(BS)]
T204	BJ00411	FM MPX LPF. [FOR E, E(BS)]
SWITCHES:		
S001	FG00011	VOLTAGE SELECTOR SWITCH (W, WUN)
S901	FE00411R	TACT SWITCH (SKQNABD010)
S902	FE00411R	TACT SWITCH (SKQNABD010)
S903	FE00411R	TACT SWITCH (SKQNABD010)
S904	FE00411R	TACT SWITCH (SKQNABD010)
S905	FE00411R	TACT SWITCH (SKQNABD010)
S906	FE00411R	TACT SWITCH (SKQNABD010)
S907	FE00411R	TACT SWITCH (SKQNABD010)
S908	FE00411R	TACT SWITCH (SKQNABD010)
S909	FE00411R	TACT SWITCH (SKQNABD010)
S910	FE00411R	TACT SWITCH (SKQNABD010)
S911	FE00411R	TACT SWITCH (SKQNABD010)
S912	FE00411R	TACT SWITCH (SKQNABD010)
S913	FE00411R	TACT SWITCH (SKQNABD010)
S914	FE00411R	TACT SWITCH (SKQNABD010)
S915	FE00411R	TACT SWITCH (SKQNABD010)
S916	FE00411R	TACT SWITCH (SKQNABD010)
CABINET CHASSIS:		
1	QA01771	TOP COVER
2	8679606	SCREW BF-S-B 4 X 6 BC
3	PH08251	INNER PANEL
	PH08252	INNER PANEL [FOR UC]
4	8601306	SCREW FLAT HEAD DT 206 X 6
5	8699408	SCREW BH BT 3 X 8 BBC
6	4692076	CUSHION
7	PM09621	FRONT PANEL [FOR UC/E/E(BS)]
	PM09622	FRONT PANEL [FOR W/W(UN)]
8	PC04411	STANDBY INDICATOR
9	PC03881	VOLUME KNOB ASSY
10	MK00246	NUT 9 X 0.75
11	PH08292	CLEAR PANEL
12	8691410	SCREW 3 X 10 BT BIND
13	EK01322	18P FFC CABLE (L=100mm)
14	PC04371	POWER BUTTON
15	PC04341	FUNCTION BUTTON
16	PC04331	TUNER BUTTON
17	PC04351	CD BUTTON
18	8679406	SCREW 3 X 6 ST BH
19	8699410	SCREW BH BT 3 X 10 BBC
20	8699410	SCREW BH BT 3 X 10 BBC
21	8699308	SCREW 2.6 X 8 BT BIND B [FOR W, W(UN)]
22	QA01761	REAR PLATE [FOR UC]
	QA01762	REAR PLATE [FOR E, E(BS)]
	QA01763	REAR PLATE [FOR W, W(UN)]
23	EY00706	AC cord [for UC]
	EY00704	AC cord [for E, E(BS), W, W(UN)]
	EY00062	EURO-CONVERTER PLUG [for E(BS)]
24	EY00281	EDISON PLUG ADAPTER [FOR W, W(UN)]
25	8671406	SCREW BH BT 3 X 6
26	8691408	SCREW BH BT 3 X 8
27	ML00442	PWB SUPPORT
28	8699408	SCREW BH BT 3 X 8 BBC
29	8691408	SCREW BH BT 3 X 8
30	NA08331	PWB BRACKET C
31	8699410	SCREW BH BT 3 X 10 BBC
32	MB00481	POWER HEAT SINK
33	8679606	SCREW BF-S-B 4 X 6 BC
34	8691408	SCREW BH BT 3 X 8
35	8699408	SCREW BH BT 3 X 8 BBC
36	NA47291	PWB HOLDER
37	8699408	SCREW BH BT 3 X 8 BBC
38	UC00502	CD MECHA
39	PH09231	CD TRAY PANEL
40	EK00974	30P FFC CABLE (L=140mm)
41	8699408	SCREW BH BT 3 X 8 BBC
42	MS00211	FELT
43	QJ00681	FOOT
44	QA01741	BOTTOM CHASSIS
45	HL01391	REMOCON (RB-AXF3)
46	EF02133	FM ANT. Connector
47	2759342	AM LOOP ANT.
48	UX06601	SP BOX ASSY (HS-R30)
MISCELLANEOUS:		
CF101	BN00101	CER. FILTER SFT10.7MS2-A (E, EBS)
CF101	2134992	CER. FILTER SFE10.7MA-8 (W, WUN, UC)
CF102	BN00101	CER. FILTER SFT10.7MS2-A (E, EBS)
CF102	BN00111	CER. FILTER SFE10.7MS2G-A (W, WUN, UC)
CF201	BN00192	CRYSTAL CDA10.7MG74C
CN002	EF05988	5P VH CON L=210MM
CN003	EF01868	MX CONN. 3P L=250MM
CN201A	ED00474	18P PIN HEADER

SYMBOL NO.	PART NO.	DESCRIPTION
CN201B	ED00156	18P PIN SOCKET (TKC-M18P-A1)
CN301	2909289L	10P PH-SAN CONN L=220MM
CN302	2909231L	8P PH SAN CONN L=240MM
CN501	EF06812	3P KR-DA CON L=300MM
CN502	EF07059	11P KR-DA CON L=320MM
CN503	2909149L	5P PH-SAN CON L=510MM
CN504	EF07393	3P DA-DA CON L=120MM
CN505	EF09821	2P MX CONN L=440MM
CN601	2909054	2P PH-SAN CONN L=330MM
CN602	2711645A	3P TXL CON L=300MM
CN701	ED01752	1.00 MM 30P FFC CONN 52806-3010
CN702	EF06862	6P KR-DA CON L=100MM
CN901A	ED02451	1.00 MM 18P FFC CONN (9615S-18A)
CN901B	ED02461	1.00 MM 18P FFC CON (9615S-18C)
E001	2729252R	FUSE HOLDER (TAPING)
E002	2729252R	FUSE HOLDER (TAPING)
E003	2729252R	FUSE HOLDER (W, UN)
E004	2729252R	FUSE HOLDER (W, UN)
E005	2729252R	FUSE HOLDER (TAPING)
E006	2729252R	FUSE HOLDER (TAPING)
E101	544408	LUG TERMINAL
E102	544408	LUG TERMINAL
FE101	HH00042	TUNER PACK FE450-G01 (E, EBS)
FE101	HH00041	TUNER PACK FE350-A01 (UC, W, WUN)
FL901	DD00391	FLD DISPLAY TUBE
IR901	CJ00252U	IC RPM-6938-V4
W10	EK01202	1P BOARD IN CONN L=80MM
JK001	EP00132	AC OUTLET (UC)
JK001	EP00091	AC OUTLET YKE31-0090 (E, EBS, W, WUN)
JK101	EU00011	ANTENNA TERMINAL BOARD
JK301	ER00742	4P US PIN JACK
JK302	ER00743	6P US PIN JACK
JK501	ER00691	HEADPHONE JACK (HTJ-035-18EBT)
JK502	ER00741	1P US PIN JACK
JK503	EU00087	4PIN PUSH TERMINAL
JK601	2671413	3.5 MINI JACK HTJ-035-09DB
JK602	DT00251	OPTICAL TRANSMITTER (TOTX178A)
PG001	2674284	3.96MM PIN POST (B2P4-VH-B)
PG002	2668814W	3.96MM PIN HEADER (V) B5P-VH)
PG003	2674262	MX MINI PIN POST (53253-0310)
PG301	2959059	PIN POST (A2001WV2-10P)
PG302	2959057	PIN POST (A2001WV2-8P)
PG501	2959052	PIN POST (A2001WV2-3P)
PG502	2959061	11 PH PIN POST (B11B-PH-K-S)
PG503	2959054	PIN POST (A2001WV2-5P)
PG505	2674261	MX MINI PIN POST (53253-0210)
PG601	2959051	2P PIN POST (A2001WV2-2P)
PG602	2658672W	TXL-P03P-B1
PR001	2726221R	ICP-N5T104
RE901	FH00112	ROTARY ENCODER REB161 (9X7)
RY001	FJ00151	RELAY (SDT-S-109LMR)
RY002	FJ00151	RELAY (SDT-S-109LMR)
TH501	CJ00151	THERMISTOR
X101	2170132R	CRYSTAL 7.200MHZ
X601	BP00141	OSC CST8.00MTW
X602	2168491	CRYSTAL 32.768KHZ
X251	2170133R	CRYSTAL 4.332MHZ (E, EBS, UC)

HITACHI

 Hitachi, Ltd. Tokyo, Japan

International Sales Division
THE HITACHI ATAGO BUILDING
No. 15 – 12 Nishi Shinbashi, 2 – Chome,
Minalo – Ku, Tokyo 105-8430, Japan.
Tel: 03 35022111

HITACHI HOME ELECTRONICS
(EUROPE) LTD.
Dukes Meadow
Millboard Road
Bourne End
Buckinghamshire
SH8 5XF
UNITED KINGDOM
Tel: 01628 643000
Fax: 01628 643400

Email: consumer-service@hitachi-eu.com

HITACHI HOME ELECTRONICS
(HELLAS) S. A.
Faliroy 91
11741
Athens
GREECE
Tel: 01-9242620
Fax: 01-9240789

Email: dimitra.vlachou@hitachi-eu.com

HITACHI SALES EUROPA GmbH.
Am Seeslerns 18
40547 Dusseldorf
GERMANY
Tel: 02 11 -5 29 15 - 0
Fax: 02 11 - 5 29 15 - 190

Email: HSE-DUS.Service@hitachi-eu.com

HITACHI SALES IBERICA, S.A.
Gran Via Carlos III,, 101 - 1
08028 Barcelona
SPAIN
Tel: 093 409 2550
Fax: 093 491 3513

Email: rplan@hitachi-eu.com

HITACHI SALES ITALIANA SPA
Via Gulli n.39
20147 MILAN
ITALY
Tel: 02 38073415
Fax: 02 4878638 1/2

Email: customerservice.italy@hitachi-eu.com

HITACHI HOME ELECTRONICS
(NORDIC) AB
Box 77
S-164 94 KISTA
SWEEDEN
Tel: 08 562 7 11 00
Fax: 08 562 7 11 11

Email: csgswe@hitachi-eu.com

HITACHI FRANCE S.A.
BP 45, 69671 Byon Cedex
FRANCE
Tel: 04 -72.14.20.70
Fax: 04 -72.14.29.99

Email: conso-hitachi@compuserve.com

HITACHI HOME ELECTRONICS
NORWAY
Brugala 14
N-0186
OSLO
NORWAY
Tel: 02205 9060
Fax: 02205 9061

Email: csgnor@hitachi-eu.com

ITEM N.V./S.A. (INTERNATIONAL TRADE FOR
ELECTRONIC MATERIAL & MEDIA N.V./S.A.)

UCO Tower – Bellevue,
17 – B – 9050 GENT
BELGIUM (for BENELUX)
Tel: 02 9 230 4801
Fax: 02 9 230 9680

Email: hitachi.item@skynet.be