

TO

STAMPS



No. 54-1022

HITACHI SERVICE BULLETIN

Issued on 29 Mar '79

Issued by Tokai

Serial No. T-143
(of factory)

MODELS D-900

DESTINATIONS _____

SUBJECT Improvement of PLAY operation

1. Reasons

PLAY operation of some units is impossible or abnormal sound is generated after REW operation caused by drift of the slider clamp installation position, so the shape of the slider holder has been changed and slider clamp has been removed.

2. Details of changes

(A) New parts after changes

(B) Original parts before changes

No.	Parts No.	Description	FOR ¥ Japan	*	Parts No.	Description	FOR ¥ Japan
	6746293	Slider holder	30	$\overrightarrow{A \ B}$	6746292	Slider holder	
				$\overleftarrow{A \ B}$			
				$\overleftrightarrow{A \ B}$			
				$\overleftarrow{\times} A \ B$			

* Interchangeability $\overrightarrow{A \ B}$: A can be a substitute for B. $\overleftarrow{A \ B}$: B can be a substitute for A.
 $\overleftrightarrow{A \ B}$: Both $\overrightarrow{A \ B}$ and $\overleftarrow{A \ B}$ are possible. $\overleftarrow{\times} A \ B$: Not interchangeable.

3. Illustration

After changes

Before changes

Grid area for illustration of parts before and after changes.

4. How to dispose of original parts in stock. (1) Use (2) Scrap

5. Execution

Model	Serial No.	When	Model	Serial No.	When
<u>D-900</u>	from <u>804XXXXX</u>	from		from	from
	from	from		from	from

6. Remarks

STAMPS



No.
54-1021

HITACHI SERVICE BULLETIN

Issued on 29 Mar '79
 Issued by Tokai
 Serial No. T-142
 (of factory)

MODELS D-900

DESTINATIONS

SUBJECT Change of flywheel

1. Reasons

The capstan is short and there is danger of part of the pinch roller being deformed, so the length of the capstan has been lengthened by 1.5mm.

2. Details of changes

(A) New parts after changes

(B) Original parts before changes

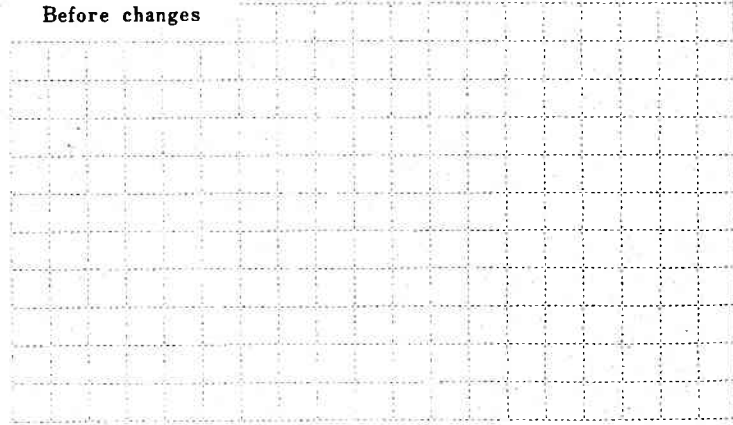
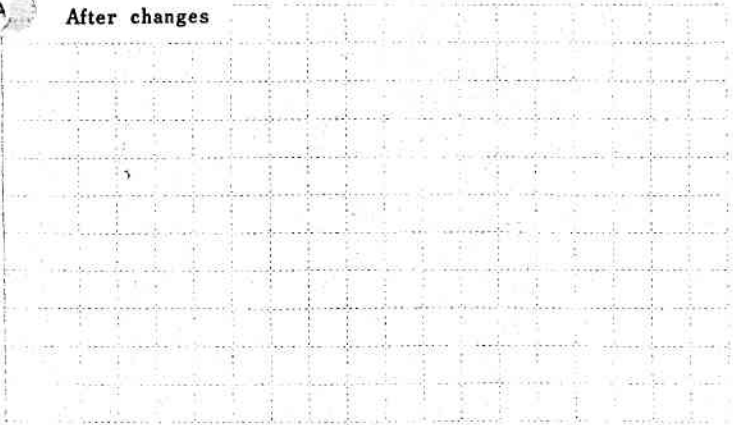
No.	Parts No.	Description	FOR ¥ Japan	*	Parts No.	Description	FOR ¥ Japan
	6373172	Flywheel(R)	340	$\overrightarrow{A B}$	6372609	Flywheel	
	6373194	Flywheel(L)	210	$\overrightarrow{A B}$	6372587	Flywheel	
				$\overleftarrow{A B}$			
				$\overleftarrow{A B}$			

* Interchangeability $\overrightarrow{A B}$: A can be a substitute for B. $\overleftarrow{A B}$: B can be a substitute for A.
 $\overleftrightarrow{A B}$: Both $\overrightarrow{A B}$ and $\overleftarrow{A B}$ are possible. $\overleftarrow{\overleftarrow{A B}}$: Not interchangeable.

3. Illustration

After changes

Before changes



4. How to dispose of original parts in stock. (1) Use (2) Scrap

5. Execution

Model	Serial No.	When	Model	Serial No.	When
	from	from		from	from
	from	from		from	from

6. Remarks

ITAC 1/10/78



STAMPS



No. 53-1012

HITACHI SERVICE BULLETIN

Issued on July 2078
Issued by Tokai
Serial No. T-107
(of factory)

MODELS D-900

DESTINATIONS _____

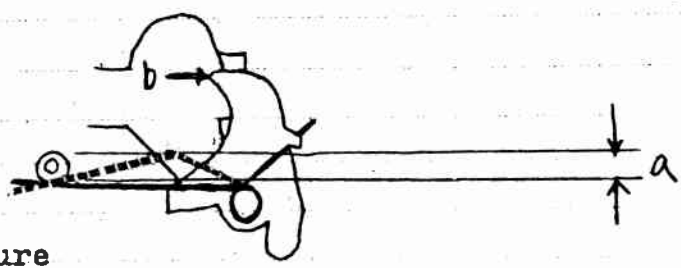
SUBJECT Improvement of mechanical sound

1. Purpose

Mechanical sound occurs in SPOP mode, so to improve it, following modification has been made.

2. Detail of change

1). Crook AS spring as shown below.

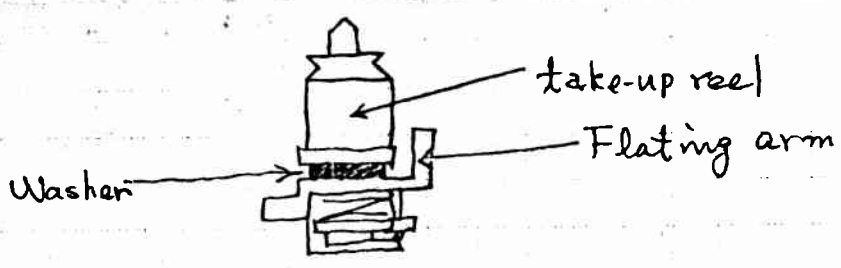


Procedure

1. Crook AS spring as a dotted line.
Dimension of "a" is 1-2mm from AS control spring to intersecting point of AS control plate and chassis.
2. Then check the tension at point "b" with tension gage that AS control plate begin to start to rotate within 4-6 gram tension. If measured tension is not within 4-6 gram, readjust the crook of AS spring.
3. After assembling, turn on the power.
And confirm that abnormal sound doesn't produced on STOP mode.

2). Change of Take-up reel

Addition of washer



3. Execution

D-900-----804XXXXX



No. 53-1013

HITACHI SERVICE BULLETIN

Issued on July 20 '78
 Issued by Tokai
 Serial No. T-108
 (of factory)

MODELS D-900

DESTINATIONS _____

SUBJECT Improvement of hum

1. Reasons

To decrease a hum noise, wiring of secondary wire (P.T) is changed.
 Wire "Blue" is paralleled with "Black" on original model. After changing, "black" is as in the original, and "Blue" is changed as below.

2. Details of changes

(A) New parts after changes

(B) Original parts before changes

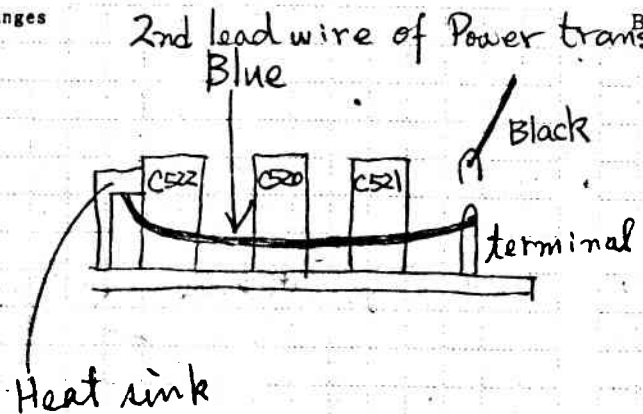
No.	Parts No.	Description	FOR ¥ Japan	*	Parts No.	Description	FOR ¥ Japan
				$\overline{A B}$			
				$\overline{A B}$			
				$\overline{A B}$			
				$\overline{A B}$			

* Interchangeability $\overline{A B}$: A can be a substitute for B. $\overline{A B}$: B can be a substitute for A.
 $\overleftrightarrow{A B}$: Both $\overline{A B}$ and $\overline{A B}$ are possible. $\overline{A B}^*$: Not interchangeable.

3. Illustration

After changes

Before changes



4. How to dispose of original parts in stock. (1) Use (2) Scrap

5. Execution

Model	Serial No.	When	Model	Serial No.	When
D-900	from XXXXX2083	from		from	from
	from	from		from	from

6. Remarks



STAMPS



No. 53-1014

HITACHI SERVICE BULLETIN

Issued on July 20 '78

Issued by Tokai

Serial No. T-109
(of factory)

MODELS D-550/720/850 SDT-9600/7785

DESTINATIONS _____

SUBJECT Improvement of mechanical sound

1. Reasons

Mechanical gearing sound is produced from F gear of Gear plate, so to improve it, following modification has been made.

2. Details of changes

(A) New parts after changes

(B) Original parts before changes

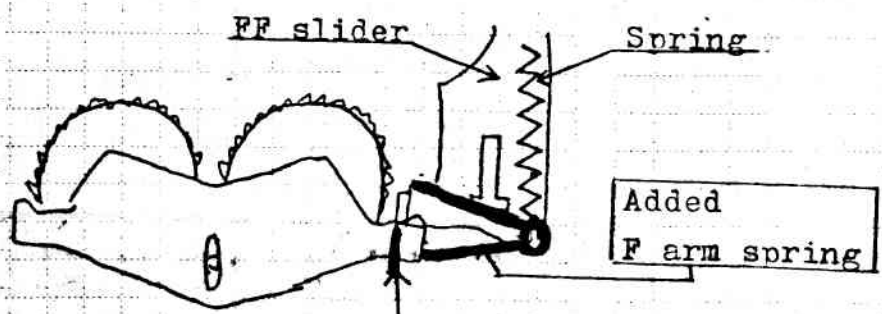
No.	Parts No.	Description	FOR ¥ Japan	*	Parts No.	Description	FOR ¥ Japan
	6308941	F arm spring	15.-	A B			
				A B			
				A B			
				A B			

* Interchangeability $\overrightarrow{A B}$: A can be a substitute for B. $\overleftarrow{A B}$: B can be a substitute for A.
 $\overleftrightarrow{A B}$: Both $\overrightarrow{A B}$ and $\overleftarrow{A B}$ are possible. $\overline{A B}$: Not interchangeable.

3. Illustration

After changes

Before changes



Lubricate "Hitazol" on this point

4. How to dispose of original parts in stock. (1) Use (2) Scrap

5. Execution

Model	Serial No.	When	Model	Serial No.	When
All of above	from 804XXXXX	from April '78			
	from	from		from	from

6. Remarks



STAMPS



No. 53-1015

HITACHI SERVICE BULLETIN

Issued on July 20 '78

Issued by Tokai

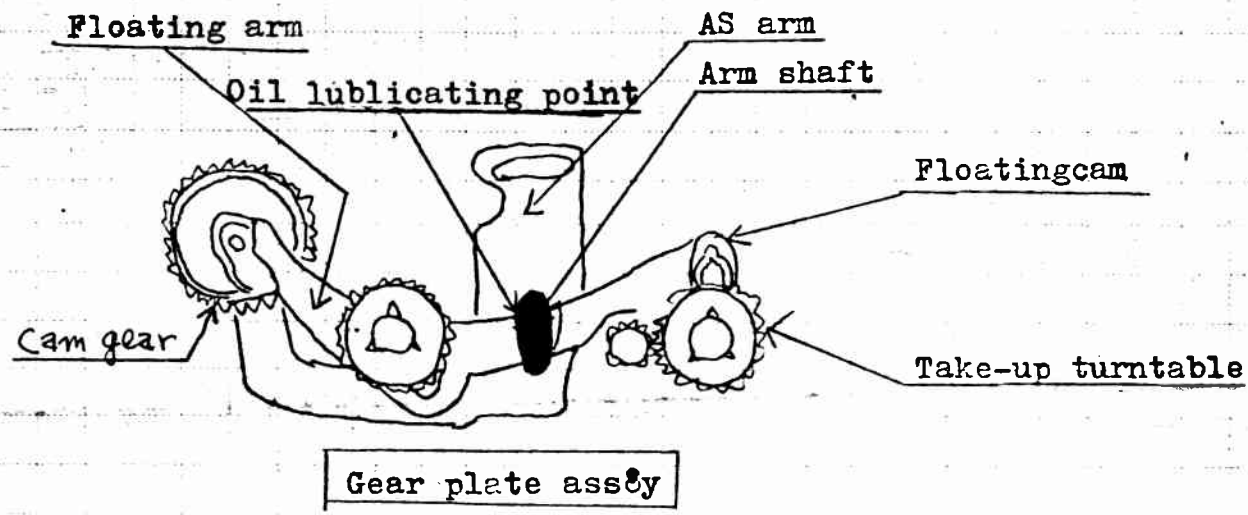
MODELS D-550/720/SDT-9600/7785

Serial No. T-110
(of factory)

DESTINATIONS

SUBJECT Improvement of auto stop mal-function

Tape transportation is stopped by working of auto stop mechanism on playing back mode, so to improve it, following modification has been made.



Procedure

1. Remove Gear plate ass'y.
Lubricate Pan motor oil on the contact surface of Floating arm and Arm shaft and AS arm.
2. Make sure that AS arm moves smoothly.

Execution

D-550/720 SDT-9600/7785-----from 804XXXXX



STAMPS



No. 53-1016

HITACHI SERVICE BULLETIN

Issued on July 20 '78
 Issued by Tokai
 Serial No. T-111
 (of factory)

MODELS D-550/720/ SDT-9600/9610/7785

DESTINATIONS

SUBJECT Improvement of pause mechanism

On former pause mechanism, when pause button depressed to stop the tape transportation temporarily during playing back or recording, heads and pressure roller return to original position. Therefore, it was caused by slow tape speed at beginning when pause mode is released.

So to improve this problem, pause mechanism has been changed as below.

After change

When pause button is depressed to release pause mode:

- 1) Heads keep touch to tape surface.
- 2) Pressure roller detach from capstan.

Details of changes

Description	New parts	Original parts	Remarks
Pressure roller	6743589 50.-	6383154	D-550AU/RW/W/BS/FS
		6743587	D-550U SDT-7785B
		6383152	D-720all/SDT-9600
Pause lever	7305281 20.-	—	All
Pause change arm	7297225 20.-	—	All
Playback plate ass	7296068 60.-	7287038	D-550AU/RW/W/BS/FS
		7296065	D-550U SDT-7785B
		7287034	D-720U/AU/W/FS
		7287036	D-720C/RW
		7287032	SDT-9600
Pause slider	7287138 35.-	7287133	D-550AU/RW/W/BS/FS D-720ALL SDT-9600 SDT-7785B

Execution

- D-550-----71107501 Nov. of '77
 D-720-----71107001 Nov. of '77
 SDT-7785---71104001 Nov. of '77
 SDT-9600---71105001 Nov. of '77
 other ---- from 1

No.

HITACHI SERVICE BULLETIN

Issued on

Issued by

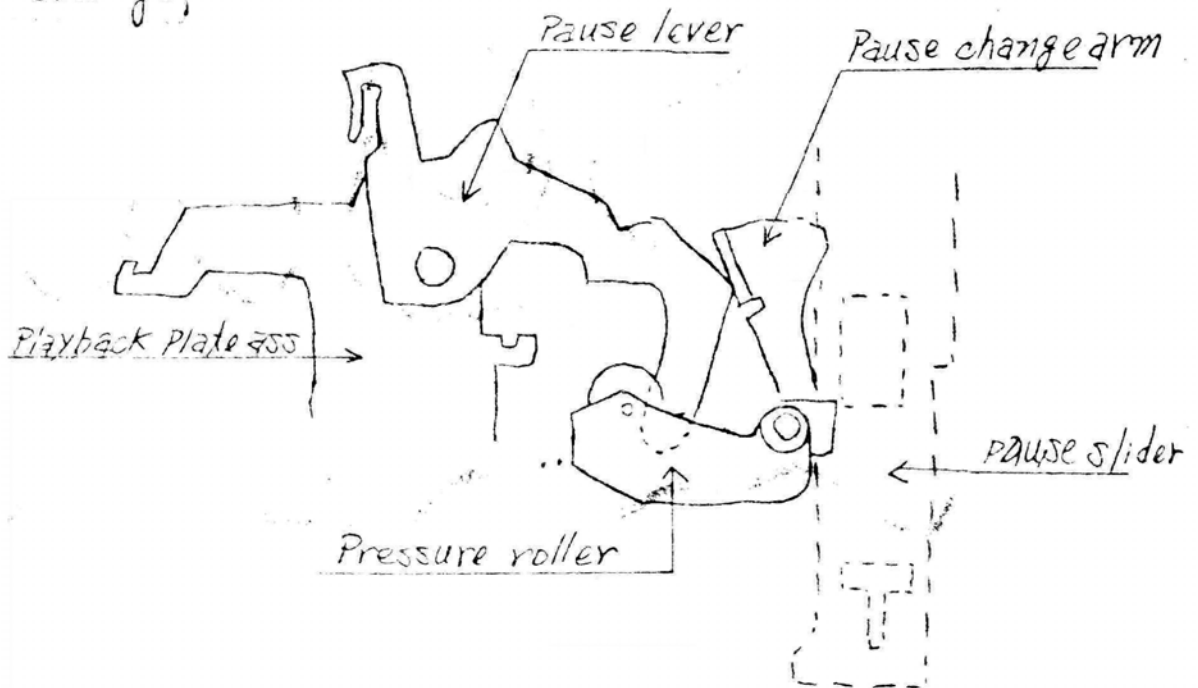
Serial No.
(of factory)

MODELS

DESTINATIONS

SUBJECT

After change,



Playback mode