



# Hitachi, Ltd.

Tokyo Japan

## model TH-862R

535-1605 kc  
Tuning range  
Intermediate frequency 455 kc  
TR7 TR8  
2N217 X2  
POWER  
TR6  
2N215  
2ND A.F.  
TR5  
2N215  
1ST A.F.  
D2  
1N34A  
DET. & AVC.  
TR4  
2N218  
2ND I.F.  
TR3  
2N218  
1ST I.F.  
D1  
1N46  
AVC.  
TR1  
HJ 74  
MIXER

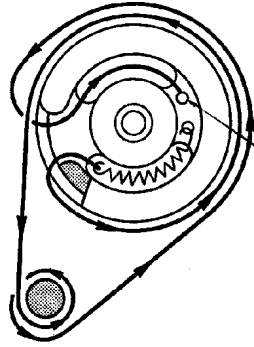
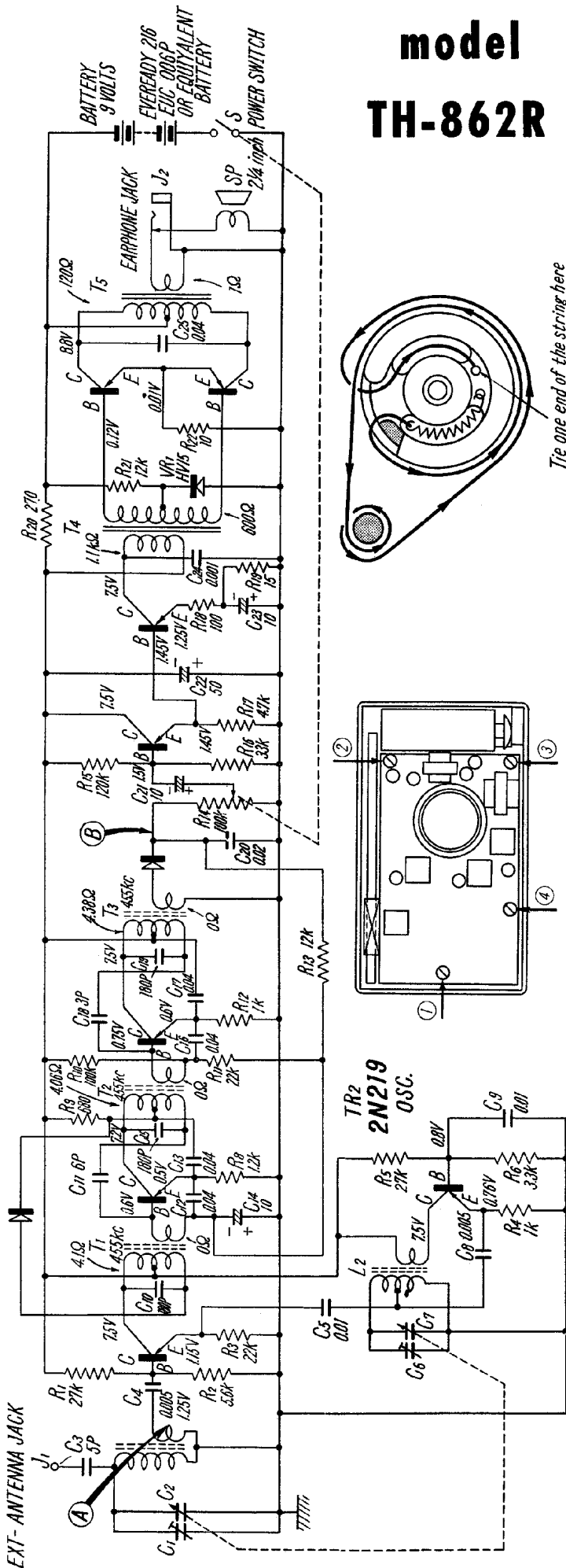


Fig. 2. How to Apply the Dial String

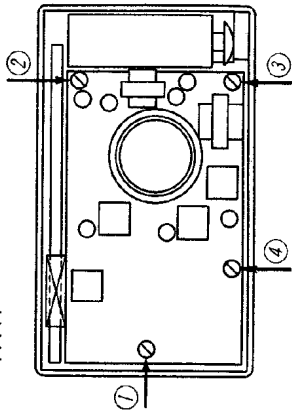
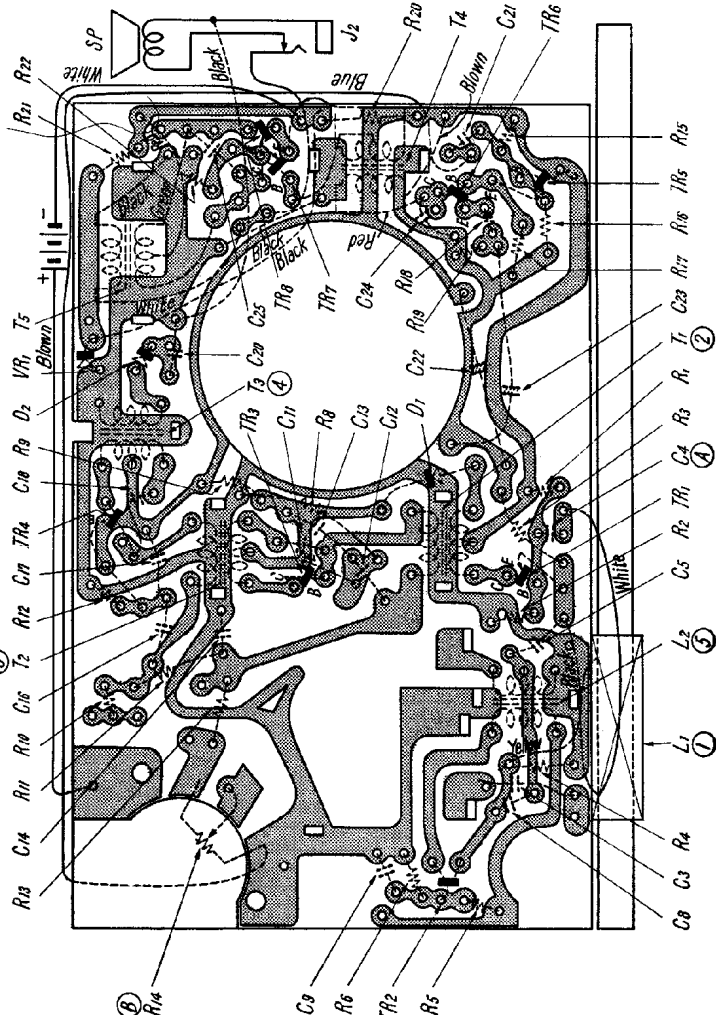


Fig. 1. How to Demount the Circuit Board



### HINTS

Investigate trouble by the following procedure. When a faulty item is discovered inspect L, C, R and the transistor of the relative circuit by referring to the circuit diagram, base plate diagram and parts arrangement diagram.

#### Inspection 1 Check battery voltage

- The battery voltage should be 6~7 volts or more when checked by a tester.
- Replace with new battery when no tester is available.

#### Inspection 2 Check for faulty connection

- Check the continuity of the battery snap lead wires by means of a tester.
- Check the continuity of the switch on the volume control with a tester while turning it on and off.

#### Inspection 3 Operation test by click noise (poke with driver tip)

- Check whether "click" is heard when a driver tip contacts point (B) of the circuit board diagram. The audio frequency circuit is okay if a "click" is heard.
- Check whether click is heard when a driver tip contacts point (A) of the circuit board diagram. The frequency converter circuit and all following circuits after it are okay if a "click" is heard.

#### Inspection 4 If a click is heard in (b) of Inspection 3, check the antenna and input circuits.

#### Inspection 5 If a click cannot be heard in (a) of Inspection 3, detach the circuit board and repeat the test.

- Check the emitter voltage of TR<sub>7,8</sub>. If it is abnormal, check the resistors, capacitors and coils. Also, check the voltage of the collector and base.
- Check the emitter voltage of TR<sub>6</sub>. If it is abnormal, check the resistors, capacitors and coils.
- Check the emitter voltage of TR<sub>5</sub>. If it is abnormal check the resistors, capacitors and coils.