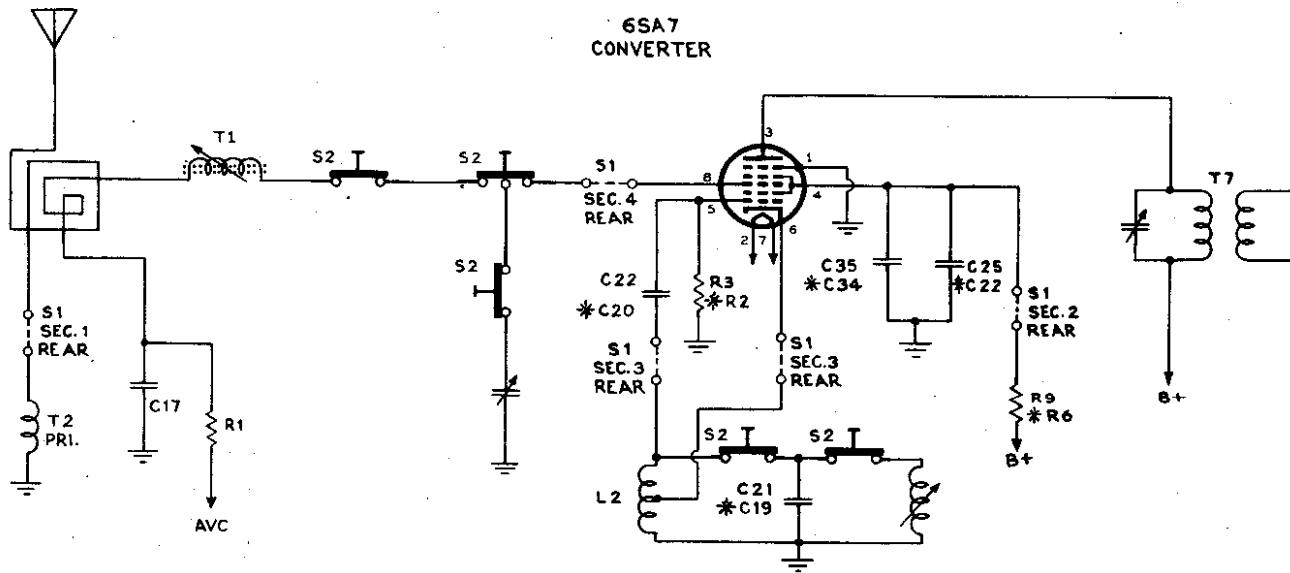
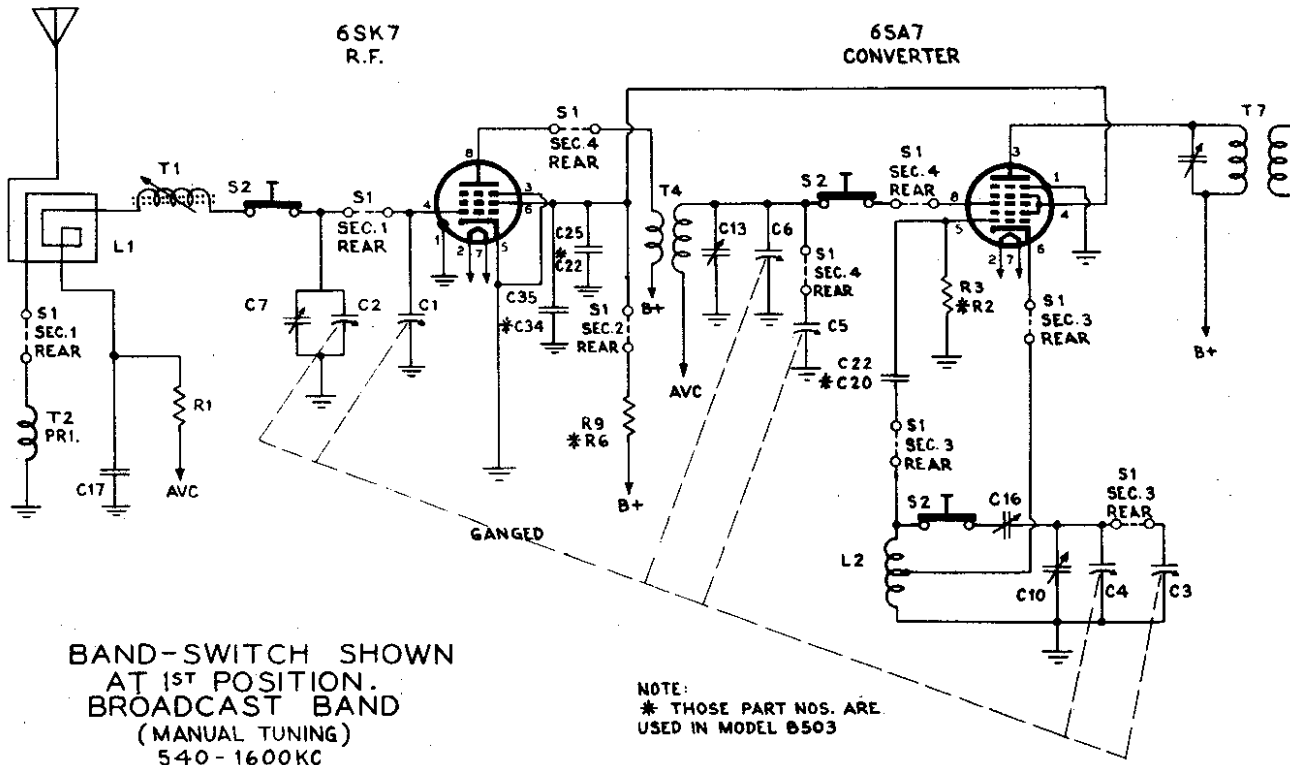


"clarified schematics"

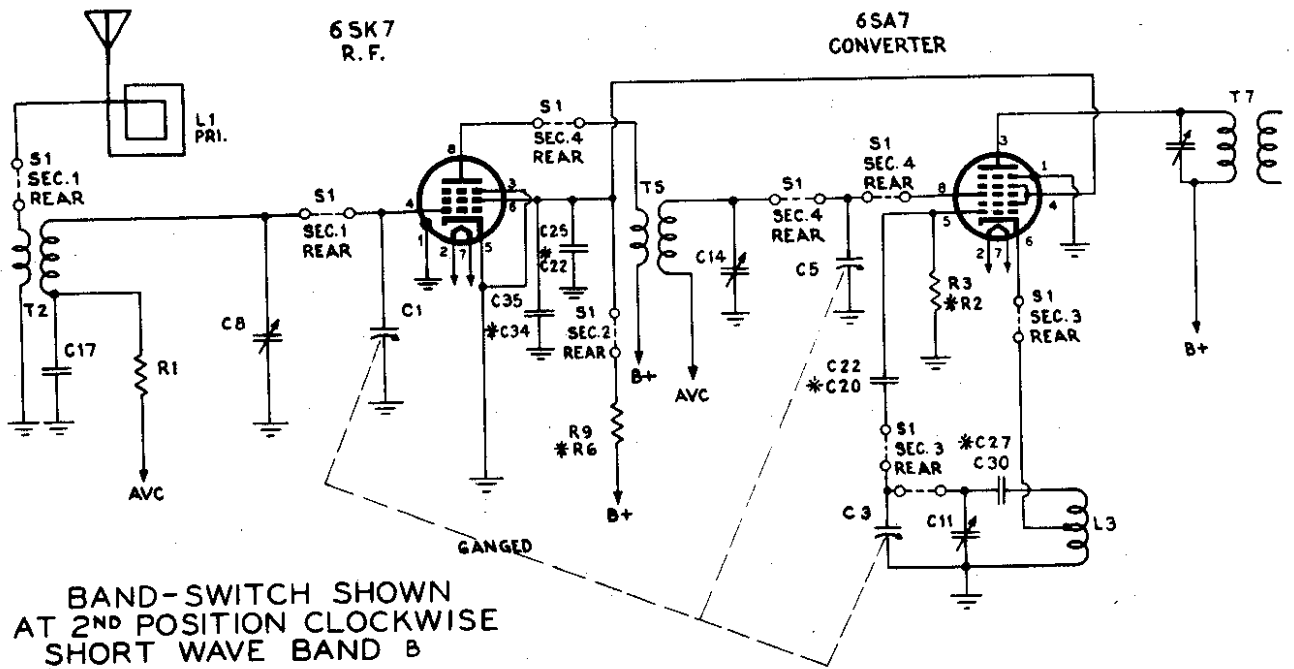
MODELS B503,
B1000

HOFFMAN RADIO CORP.



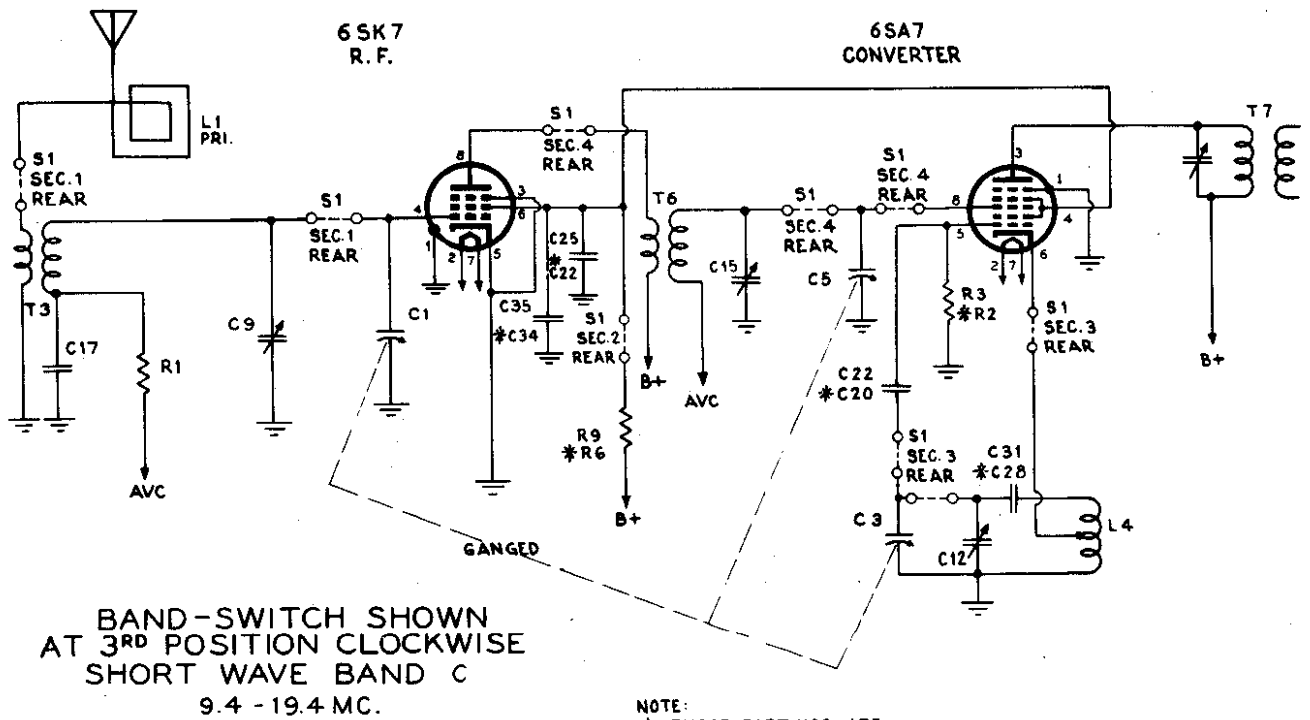
HOFFMAN RADIO CORP.

MODELS B503,
B1000



BAND-SWITCH SHOWN
AT 2ND POSITION CLOCKWISE
SHORT WAVE BAND B
5.6 - 10.4 MC.

NOTE:
* THOSE PART NOS. ARE
USED IN MODEL B503

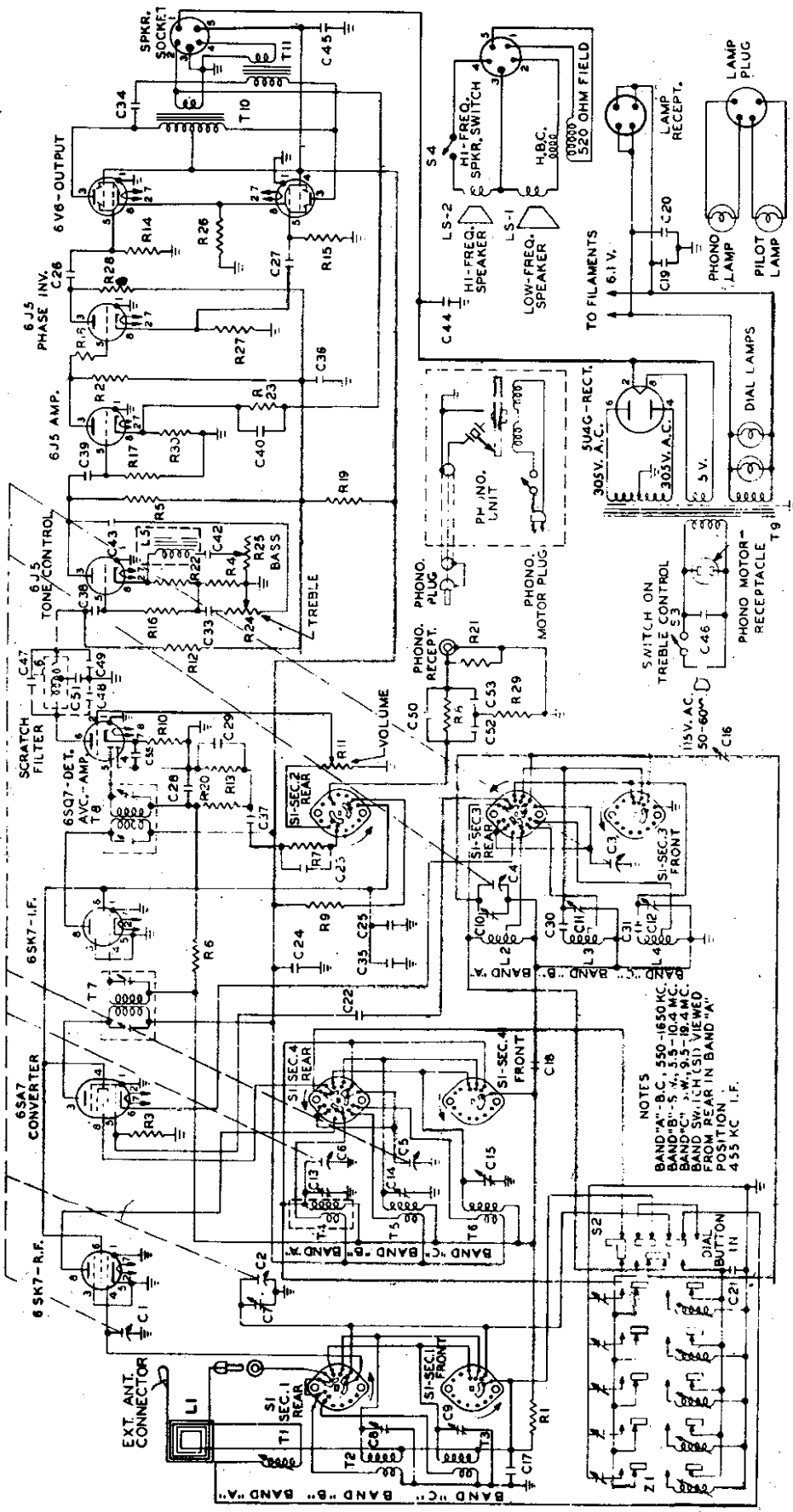


BAND-SWITCH SHOWN
AT 3RD POSITION CLOCKWISE
SHORT WAVE BAND C
9.4 - 19.4 MC.

NOTE:
* THOSE PART NOS. ARE
USED IN MODEL B503

MODEL B1000,
Chassis 114

HOFFMAN RADIO CORP.



NOTES
 BAND "A" - B.C. 550-1650 KC.
 BAND "B" - S.W. 35-10.4 MC.
 BAND "C" - H.I. 151 VIEWED
 FROM REAR IN BAND "A"
 POSITION IN BAND "A"
 455 KC I.F.

ALL LAMPS
 TYPE NO. 44

©John F. Rider

RECORD CHANGER: Webster Model 56, RCD. CH. 15-8
 For clarified schematics see Model B503, pages 17-10, 17-11

HOFFMAN RADIO CORP.

MODEL B1000

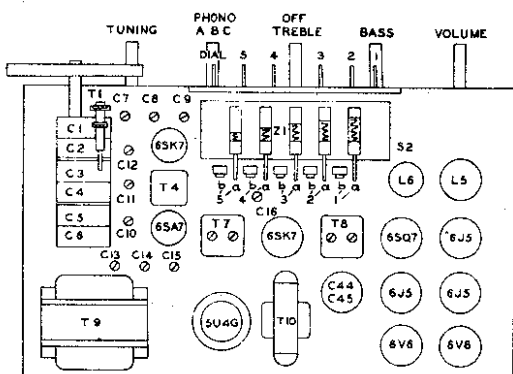
NORMAL OPERATING VOLTAGES

The following table lists the normal operating voltages to be expected at the various tube socket terminals.

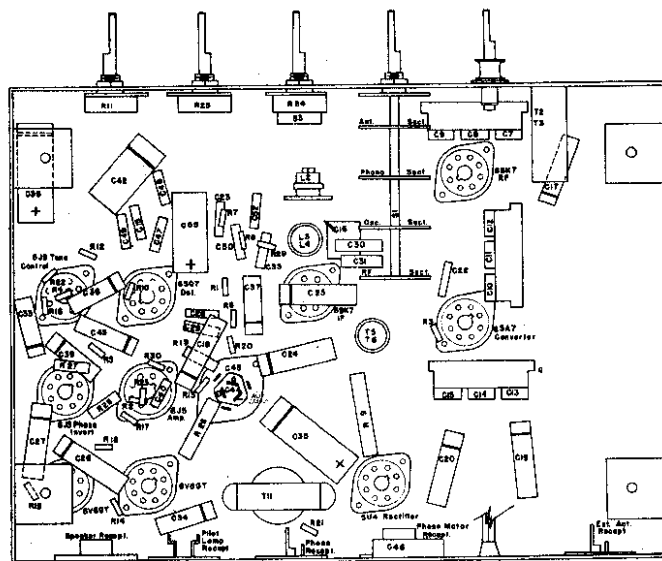
PIN NO.	1	2	3	4	5	6	7	8
6SK7	0	6.2 AC	0	-.4	0	+103	6.2 AC	+270
6SA7	0	6.2 AC	+270	+103	-5.3	0	6.2 AC	-.3
6SK7	0	6.2 AC	0	-.3	0	+103	6.2 AC	+270
6SQ7	0	0	+8	-2.3	0	+103	6.2 AC	6.2 AC
6J5 (Tone)	0	6.2 AC	+113	0	+7	+30	6.2 AC	+6.8
6J5 (Audio)	0	6.2 AC	+22	0	0	+125	6.2 AC	+1.1
6J5 (Inv.)	0	6.2 AC	+102	0	+4	0	6.2 AC	+26
6V6GT	0	6.2 AC	+260	+270	0	0	6.2 AC	+16
6V6GT	0	6.2 AC	+260	+270	0	0	6.2 AC	+16
5u4G	0	+340	0	310 AC	0	310 AC	+103	+340

D.C. voltages measured with 20,000 ohm/volt meter.
A.C. voltages measured with 1.00 ohm/volt meter.
Line voltage 117.
All voltages measured with reference to chassis.

NOTE: The above readings are obtained with no signal input to receiver and band switch in position "A".



Top of Chassis



Bottom of Chassis

SPECIFICATIONS

TUNING RANGES:

Band "A"	540 Kc to 1600 Kc
Band "B"	5.6 Mc to 10.4 Mc
Band "C"	9.4 Mc to 19.4 Mc
Intermediate Frequency	455 Kc
Power Supply	115 V. A.C. 50-60 C.P.S.
Power Consumption (incl. phono.)	127 Watts
Undistorted Audio Output	12 Watts

NORMAL OPERATING CURRENTS

SU4G	Cathode Current	115 Ma
6V6	Cathode Current (both tubes)	70Ma



Pushbutton Frequencies

PUSHBUTTON NO.	1	2	3	4	5
FREQUENCY RANGE IN KILOCYCLES	600 TO 650	650 TO 700	700 TO 750	750 TO 800	800 TO 850

AUTOMATIC RECORD CHANGER

The automatic record changer used with this receiver is a Webster Model 56.

CAUTION:

No alignment adjustments should be attempted without first thoroughly checking over all other possible causes of trouble such as defective tubes, resistors, and condensers.

SYMBOL	DESCRIPTION	HOFFMAN No.
C1-C2, C3-C4, C5-C6	Three-Section Variable with Split Stator (160-260, 160-260, 160-260 Mmf.)	4403
C7, C8, C9	Three-Section Trimmer Assembly—Ant.	4300
C10, C11, C12	Three-Section Trimmer Assembly—Osc.	4300
C13, C14, C15	Three-Section Trimmer Assembly—R.F.	4300
C16	110-560 Mmf., Padder, Band "A"	4301
C17, C18, C19, C20	.05 Mfd., 200 Volt, Tubular Paper	4100
C21	500 Mmf., 5% Silver Mica	4004
C22	47 Mmf., 10% Mica	4007
C24, C25, C26, C27	.05 Mfd., 400 Volt, Tubular Paper	4101
C28, C29	100 Mmf., 20% Mica	4000
C30	1050 Mmf., 5% Mica	4005
C31	2300 Mmf., 5% Mica	4006
C33, C34	.005 Mfd., 600 Volt, Tubular Paper	4102
C35, C36	10 Mfd., 450 Volt, Tubular Electrolytic	4203
C37, C39	.01 Mfd., 400 Volt, Tubular Paper	4112
C40	470 Mmf., 20% Mica	4003
C42	2 Mfd., 200 Volt, Tubular Paper	4108
C43	.02 Mfd., 400 Volt, Tubular Paper	4106
C44, C45	20-20-20 Mfd., 450-25V. Electrolytic	4200
C46	.01 Mfd., 600 Volt, Tubular Paper	4105
C49, C48, C49, C50	330 Mmf., 5% Mica	4010
C51	650 Mmf., 5% Mica	4011
C52, C53	1500 Mmf., 5% Mica	4016
C58	.001 Mfd., 600 Volt, Tubular Paper	4104
L1	Loop Antenna Assembly	5210
L2	Oscillator Coil (Band "A")	5215
L3, L4	Oscillator Coil (Bands "B" and "C")	5218
L5	Choke-Bass Boost	5113
LS-1	12" Loudspeaker, Electrodynam. Bass	9036
LS-2	5" Loudspeaker, P.M., Hi-Frequency	9035
R1	1 Megohm - 20% 1/2 Watt	4511
R3, R4	2,000 Ohm - 20% 1/2 Watt	4501
R6, R8	2.2 Megohm - 20% 1/2 Watt	4502
R9	10,000 Ohm - 10% 2 Watt	4503
R10, R22	2,200 Ohm - 20% 1/2 Watt	4512
R11	5 Megohm Potentiometer—Volume Control	4804
R2, R13, R14, R15	22 Megohm - 20% 1/2 Watt	4500
R16, R17, R7	1 Megohm - 20% 1/2 Watt	4513
R19	47,000 Ohm - 20% 1 Watt	4516
R20, R12	47,000 Ohm - 20% 1/2 Watt	4504
R18	4.7 Megohm - 20% 1/2 Watt	4544
R23, R5	10,000 Ohm - 20% 1/2 Watt	4515
R24	.25 Meg. Pot. with Switch—Trebble Control	4805
R25	50,000 Ohm Potentiometer—Bass Control	4806
R26	220 Ohm - 20% 3 Watt	4519
R27, R28, R29	47,000 Ohm - 5% 1/2 Watt	4527
R30	4,700 Ohm - 20% 1/2 Watt	4543
S1	Band Change Switch	6005
S2	Pushbutton Switch Assembly	6004
T1	On-Off Switch (on treble control)	5220
T2, T3	Antenna Coil (Bands "B" and "C")	5217
T4	R.F. Coil (Shielded Band "A")	5216
T5, T6	R.F. Coil (Bands "B" and "C")	5219
T7	Input I.F. Transformer	5213
T8	Output I.F. Transformer	5214
T9	Power Transformer	5001
T10	Audio Output Transformer—Bass Speaker	5115
T11	Audio Output Transformer—Hi-Frequency Spkr.	5100
Z1	Pushbutton Tuning Assembly	5200
L6	Scratch Filter Choke	5114
S4	Speaker Switch, Hi-Frequency	6001
C55	25 Mfd., 25 Volt, Electrolytic	4205
R21	47 Meg. - 20% 1/2 Watt	4506