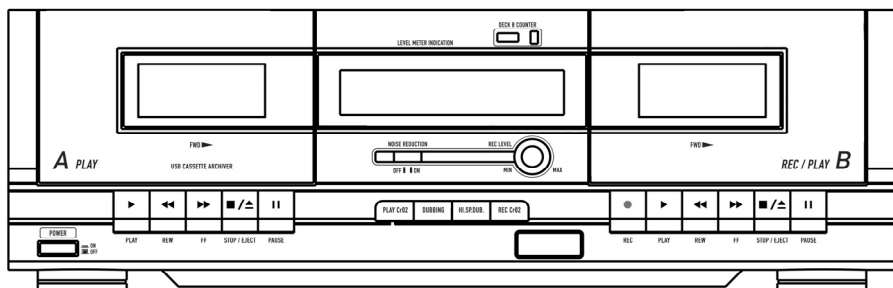




TAPE2PC

USB CASSETTE ARCHIVER



SERVICE MANUAL

CONTENTS

1. SPECIFICATION.....	1
2. FRONT PANEL INFORMATION.....	2
3. REAR PANEL INFORMATION.....	3
4. WIRING DIAGRAM.....	4
5. SEMICONDUCTOR INSTRUCTION.....	5
6. PRINTED CIRCUIT BOARDS.....	6-9
7. SCHEMATIC DIAGRAM.....	10-12
8. EXPLODED VIEW.....	13-14
9. ELECTRICAL PARTS LIST.....	15-17

TECHNICAL SPECIFICATIONS

Type	Stereo double cassette deck
Track System	4-track 2-channel
Tape speed	4.8 cm/sec
Frequency Response (-20dB recording)	
Chrome tape	40-15000Hz (± 3 dB)
Normal tape	40-14000Hz (± 3 dB)
(0dB recording)	
Chrome tape	40-8000Hz (± 3 dB)
Normal tape	40-8000Hz (± 3 dB)
S/N ratio	58dB
Wow and flutter	<0.2% (DIN45500)
Crosstalk	40dB (1kHz)
Harmonic distortion	less than 1% (at 1 kHz, OVU 3 rd H.D. normal tape)
Channel separation	40dB (1kHz)
Head	
Deck A	Playback
Deck B	Recording/playback, 2-gap ferrite head for erasure
Motor	DC servo motor x 2
Fast forward/Rewind time	~100 sec w. C-60 cassette

Input terminals

Line In x 2	Min. input level: 600mV (0dB) Input impedance: 50k Ω
-------------	--

Output terminals

Line Out x 2	Output level: 600mV (0dB)
--------------	---------------------------

USB Audio Interface

Output impedance: 5k Ω
USB 1.1 compatible, 16 bit,
44.1kHz (CD quality) or 48kHz
sample rate

Power requirement

AC220V-230V ~ 60Hz

For U.K.

240V ~ 60Hz

For U.S.A. & Canada

127V ~ 60Hz

Power Consumption

6W Maximum

Dimensions

420mm x 135mm x 215mm
(W x H x D)

Weight

4kg (8.5lbs)

Accessories

RCA cable, USB cable, Software
CD, Quickstart Manual, Safety and
Warranty Information

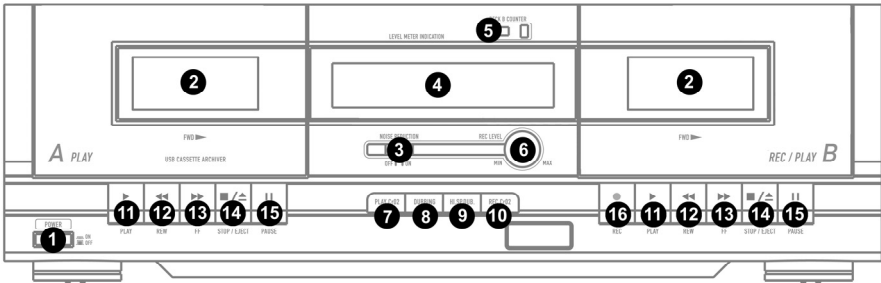
BOX CONTENTS

Please check to make sure that the following items are located in the box:

- Tape2PC cassette player
- RCA Cable
- Tape2PC Quickstart Manual
- USB cable
- Software CD
- Safety and Warranty Information

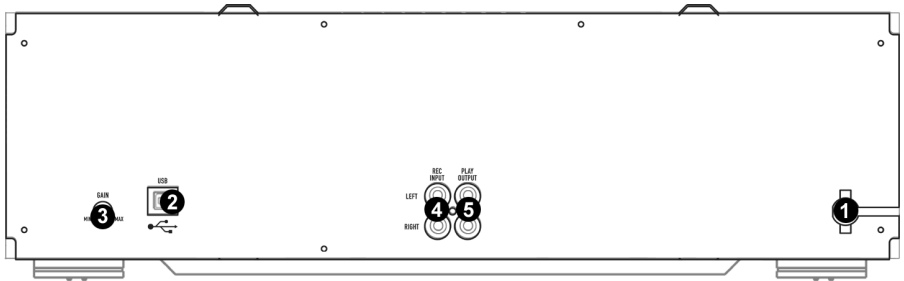
Please read the included Safety & Warranty Information booklet before using this product!

FRONT PANEL OVERVIEW

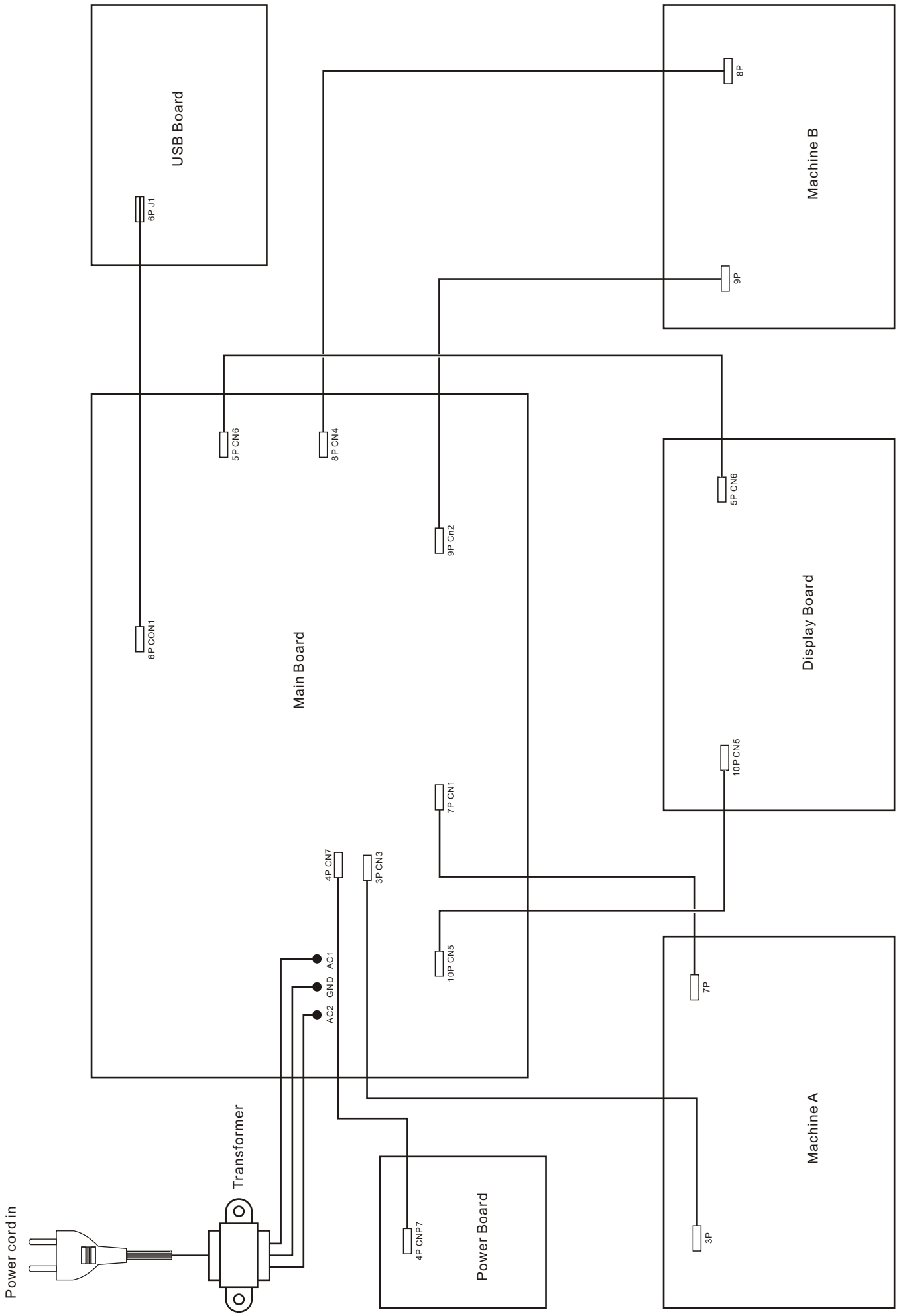


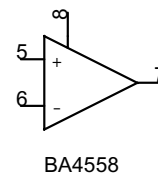
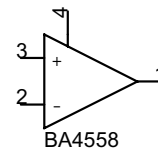
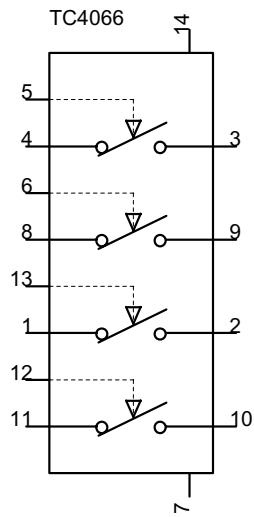
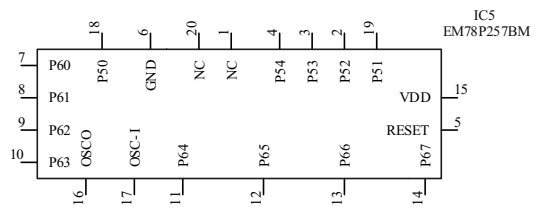
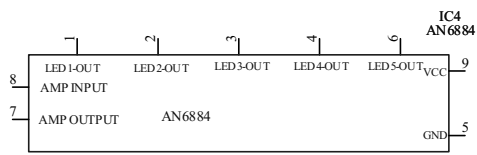
1. **POWER BUTTON** – Use this button to turn the unit on and off. If the unit is not being used for a prolonged period of time, please also remove the AC plug from the power socket.
2. **CASSETTE HOLDER** – Insert your cassettes into either of these two holders. The holders may be opened by pressing the corresponding [STOP/EJECT] button (14). Please note that both decks can be used for playback but only deck B can be used for recording/dubbing.
3. **DYNAMIC NOISE REDUCTION** – Dynamic Noise Reduction should be turned on whenever playing back tapes which were recorded using this feature.
4. **DISPLAY** – The display will help you keep track of audio levels and the features which have been engaged.
 - PEAK LEVEL INDICATOR** – The meters indicate the audio level during recording and playback.
 - REC** – lights when deck B is recording or in record-pause mode
 - HI SP DUB** – lights when high-speed dubbing mode is engaged
 - PLAY Cr02** – lights when Play Cr02 function is engaged
 - REC Cr02** – lights when Rec Cr02 function is engaged
5. **TAPE COUNTER AND [RESET] BUTTON** – The tape counter indicates the tape position when playing or recording tapes (deck B only). To reset the counter, press the [RESET] button.
6. **REC LEVEL KNOB** – Use this knob to adjust the recording level when recording external sources to deck B.
7. **[PLAY Cr02] BUTTON** – This feature should be set depending on the kind of tape you are playing. When using normal tapes, this feature should be turned off (“PLAY Cr02” not lit on the display). When using Cr02 tapes, this feature should be turned on (“PLAY Cr02” is lit on the display).
8. **[DUBBING] BUTTON** – Press this button if you would like to dub a tape from deck A to a tape in deck B (“DUBBING” will light on the display).
9. **[HI SP DUB] BUTTON** – Press this button to enable high-speed dubbing (“HIGH SPEED” will light on the display). Press again to disable high-speed dubbing.
10. **REC Cr02 BUTTON** – Turn this feature on when recording to a Cr02 tape on deck B (“REC Cr02” is lit on the display).
11. **[PLAY]** – Press to play the tape on the corresponding deck.
12. **[REWIND]** – Press to rewind the tape on the corresponding deck.
13. **[FAST FORWARD]** – Press to fast forward the tape on the corresponding deck.
14. **[STOP/EJECT]** – Press to stop the tape on the corresponding deck. When stopped, press again to open the cassette holder.
15. **[PAUSE]** – Press to pause the tape on the corresponding deck. Press again to resume playback.
16. **[RECORD]** – Press this button in conjunction with the [PLAY] button to begin recording.

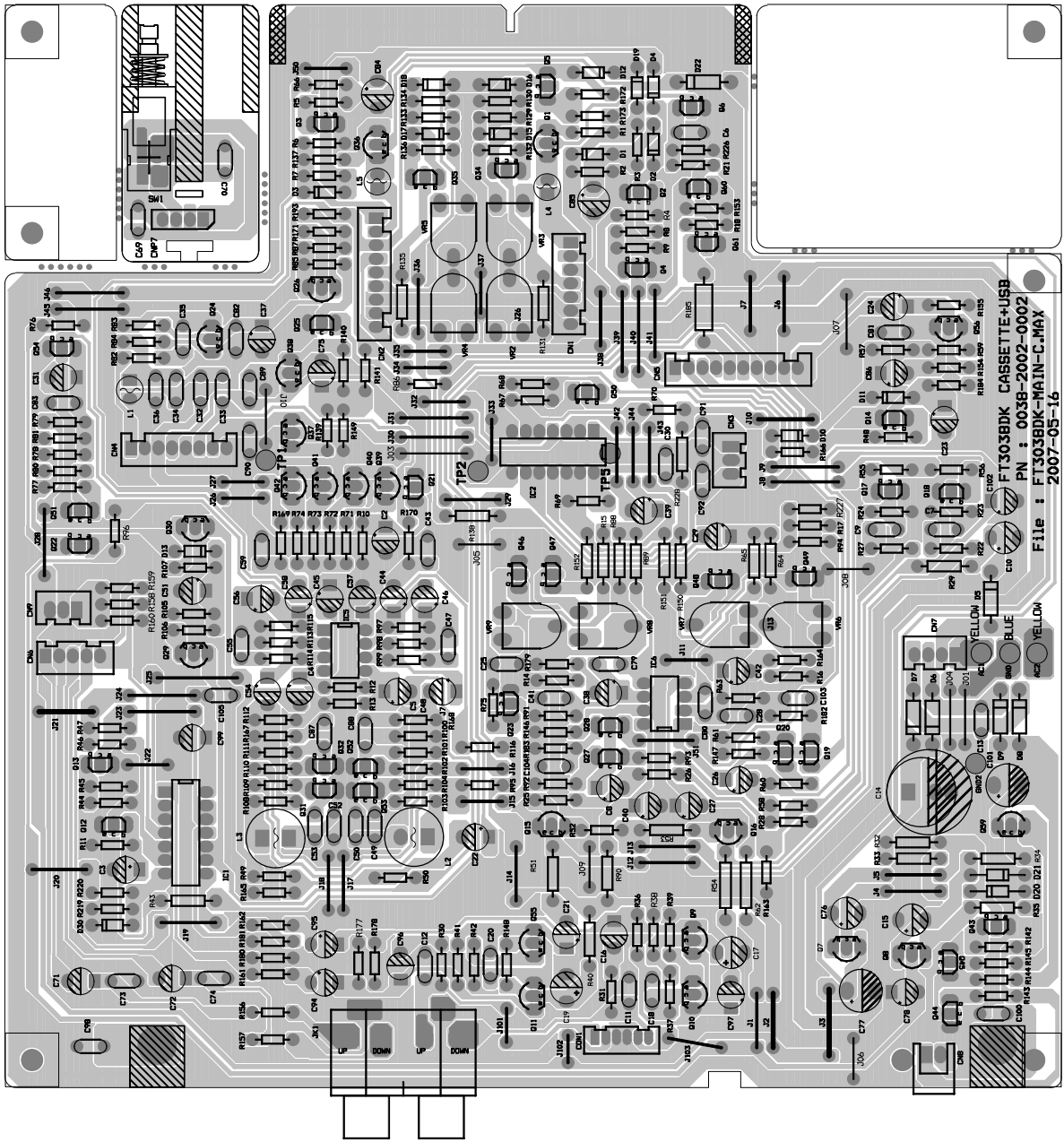
REAR PANEL OVERVIEW

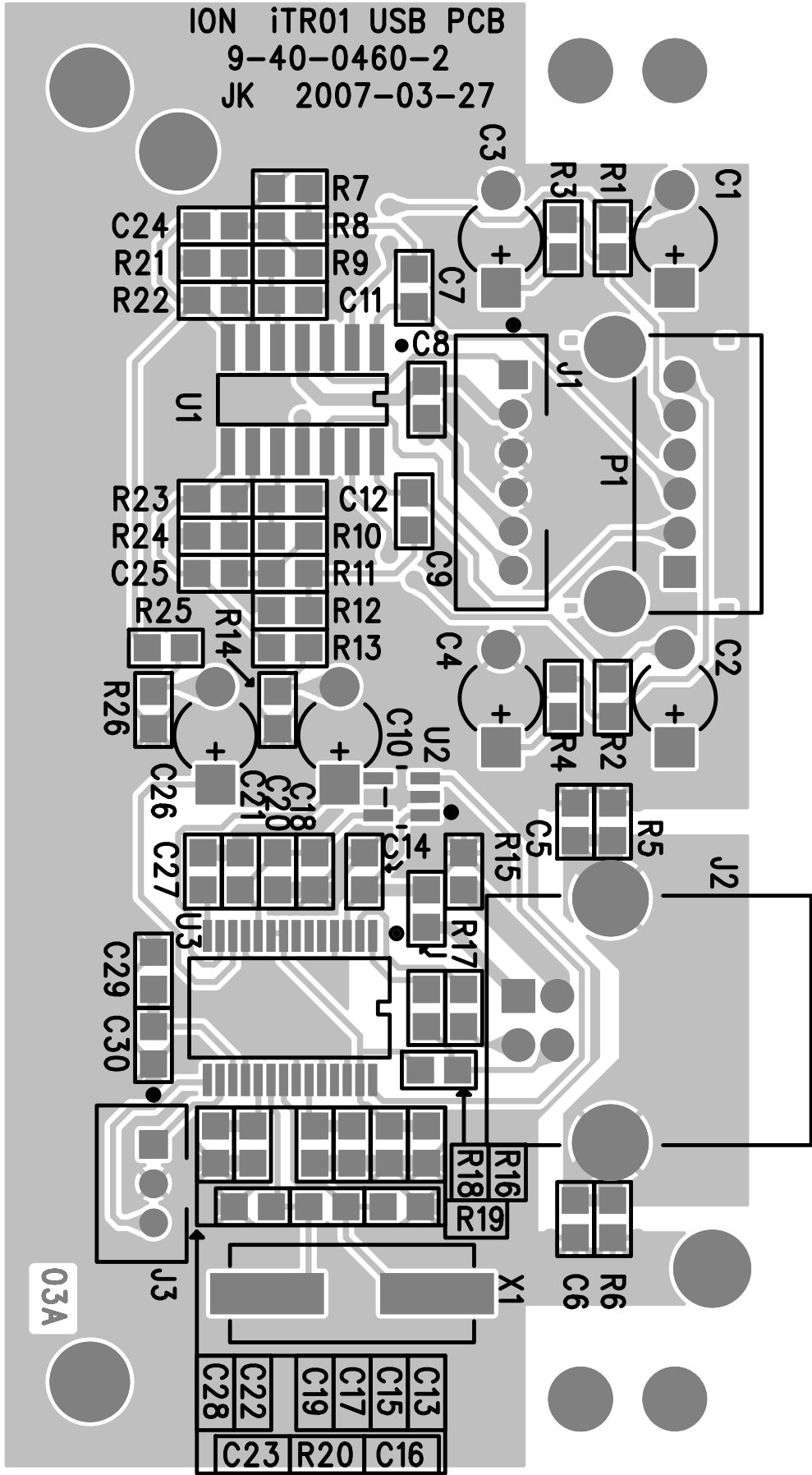


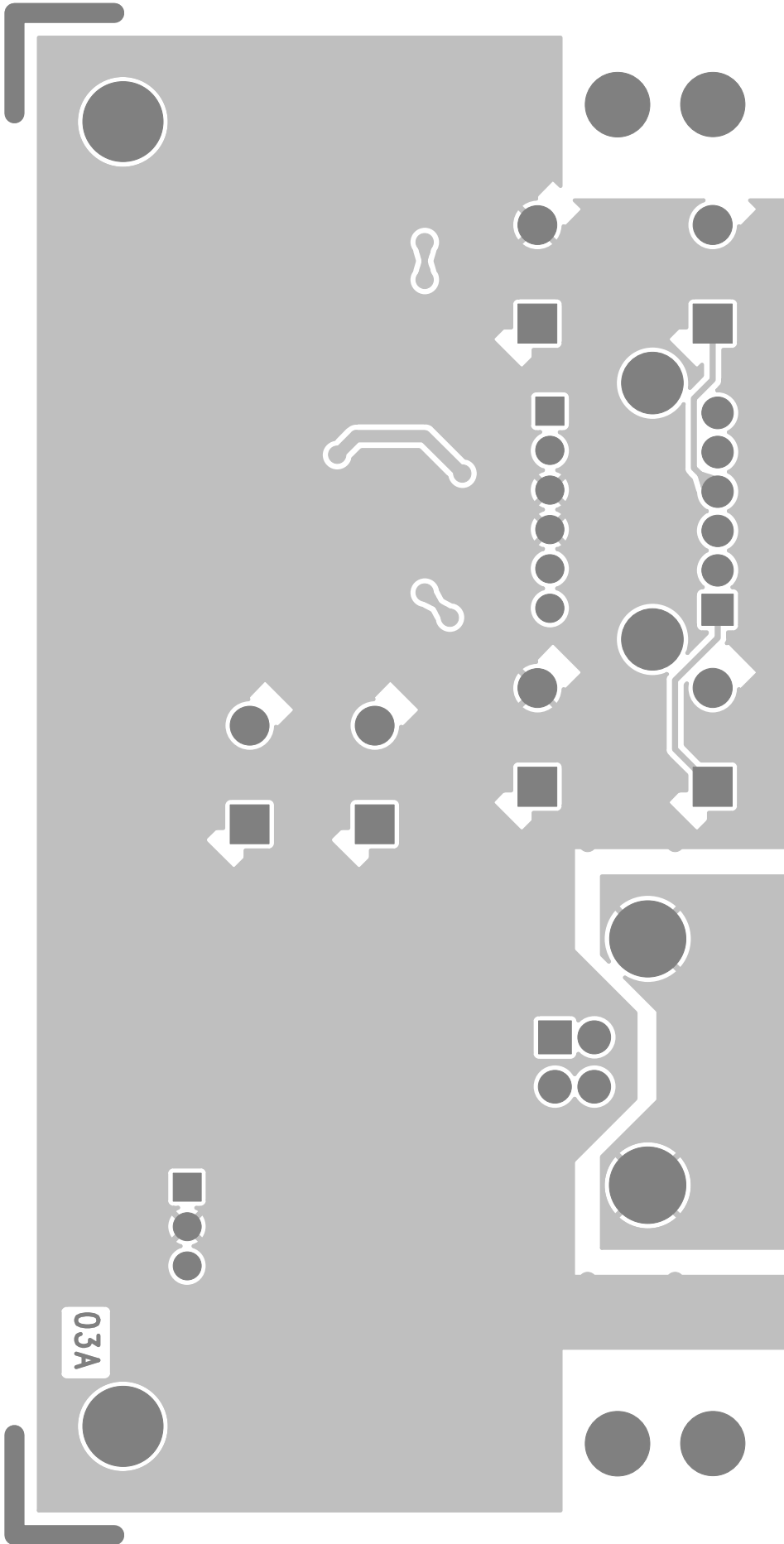
- 1. POWER CORD** – Plug this cord into a power socket before powering on the unit. If not using the unit for prolonged periods of time, please remember to turn it off and remove the cord from the socket.
- 2. USB PORT** – Use the included USB cable to connect this port to an available USB port on your computer when transferring tapes. You can use the included EZ Tape Converter and Audacity software applications to transfer and backup your tapes digitally. If you are a novice user, we recommend the EZ Tape Converter software for transferring your tapes to your computer. For advanced users, we suggest the Audacity software, which allows for advanced editing of your recording, including noise removal normalization, and automatic track separation.
- 3. GAIN KNOB** – This knob can be used to adjust the audio signal from the unit to your computer. If you experience distortion and clipping when recording to your computer, we recommend turning down the Gain. If the audio level from the unit is extremely low when recording to your computer, we recommend turning up the Gain.
- 4. REC INPUT** – Connect a stereo RCA cable from an external source to this input. Please note that recording and dubbing only works on deck B.
- 5. PLAY OUTPUT** – This is the combined audio output from deck A and deck B. Connect a stereo RCA cable from this output to the Line or Auxiliary input of a home stereo receiver system.

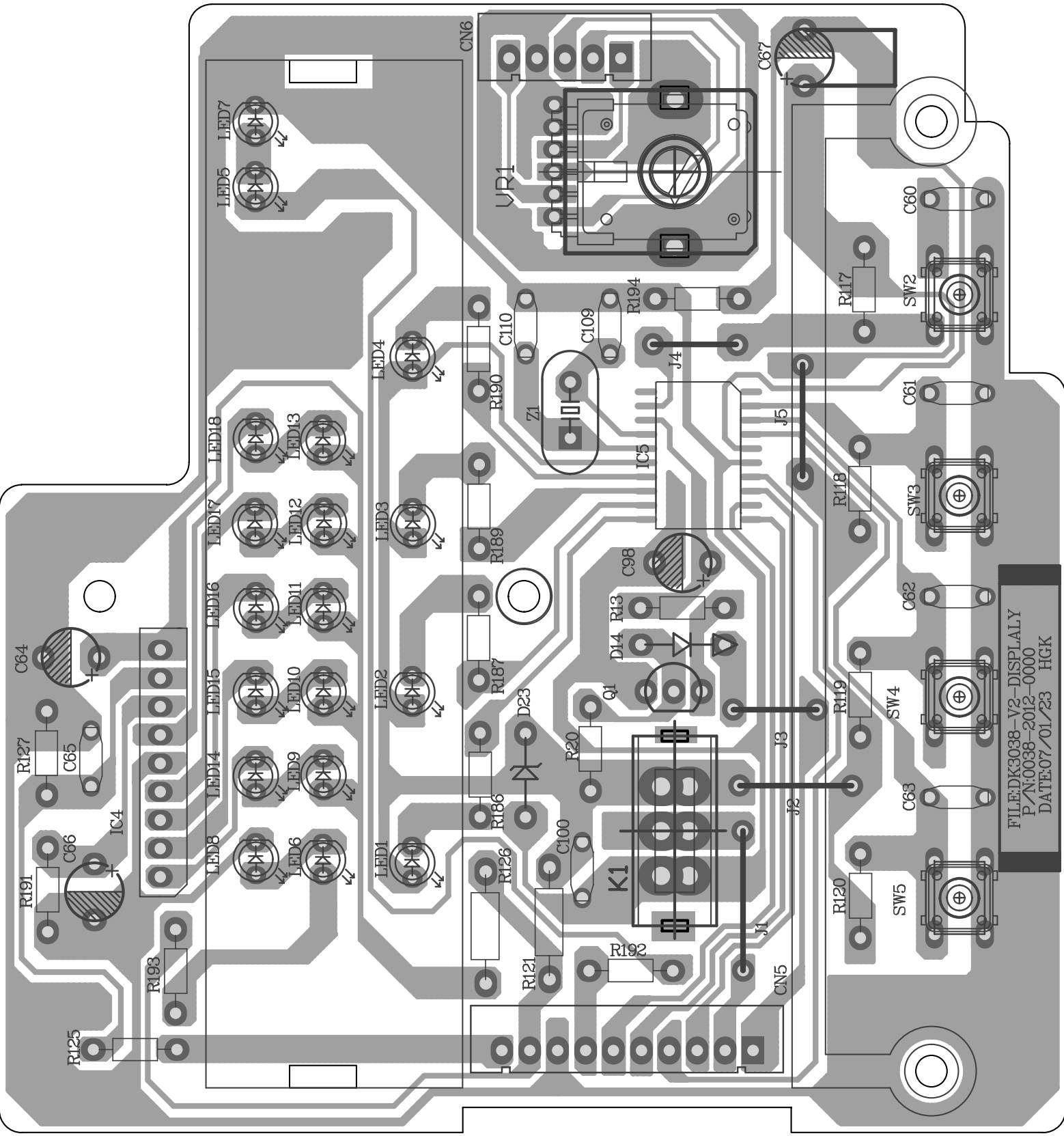




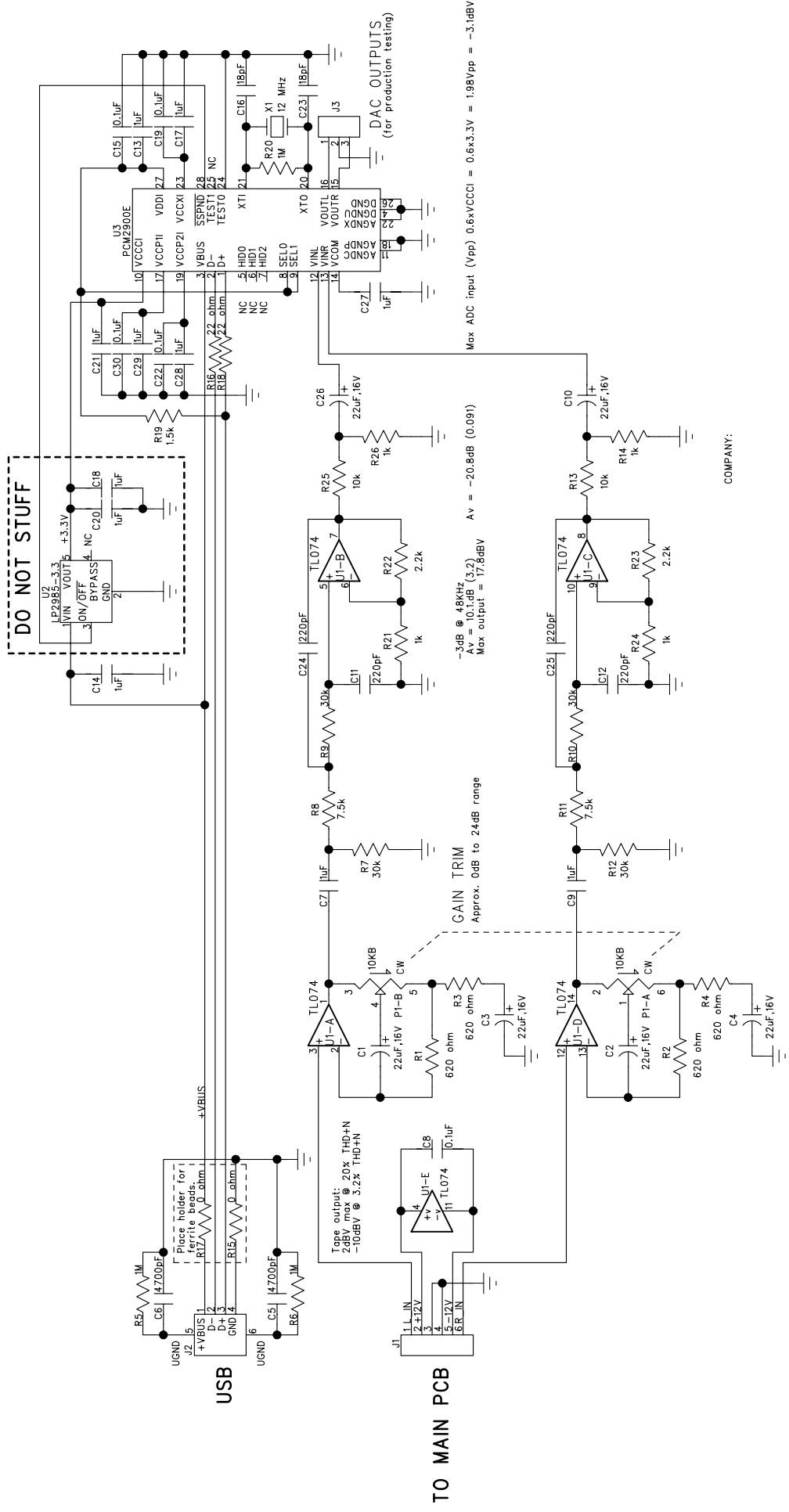


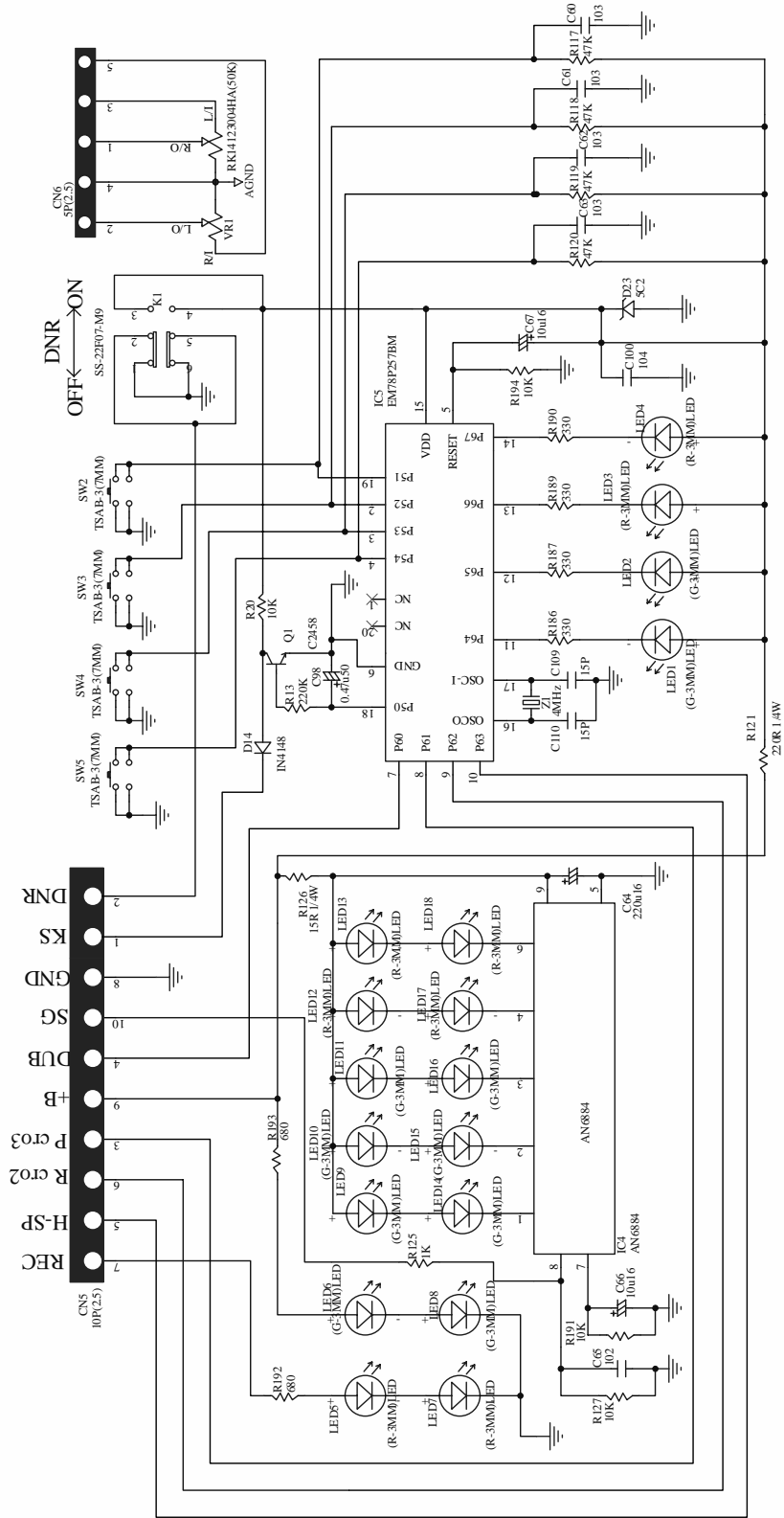


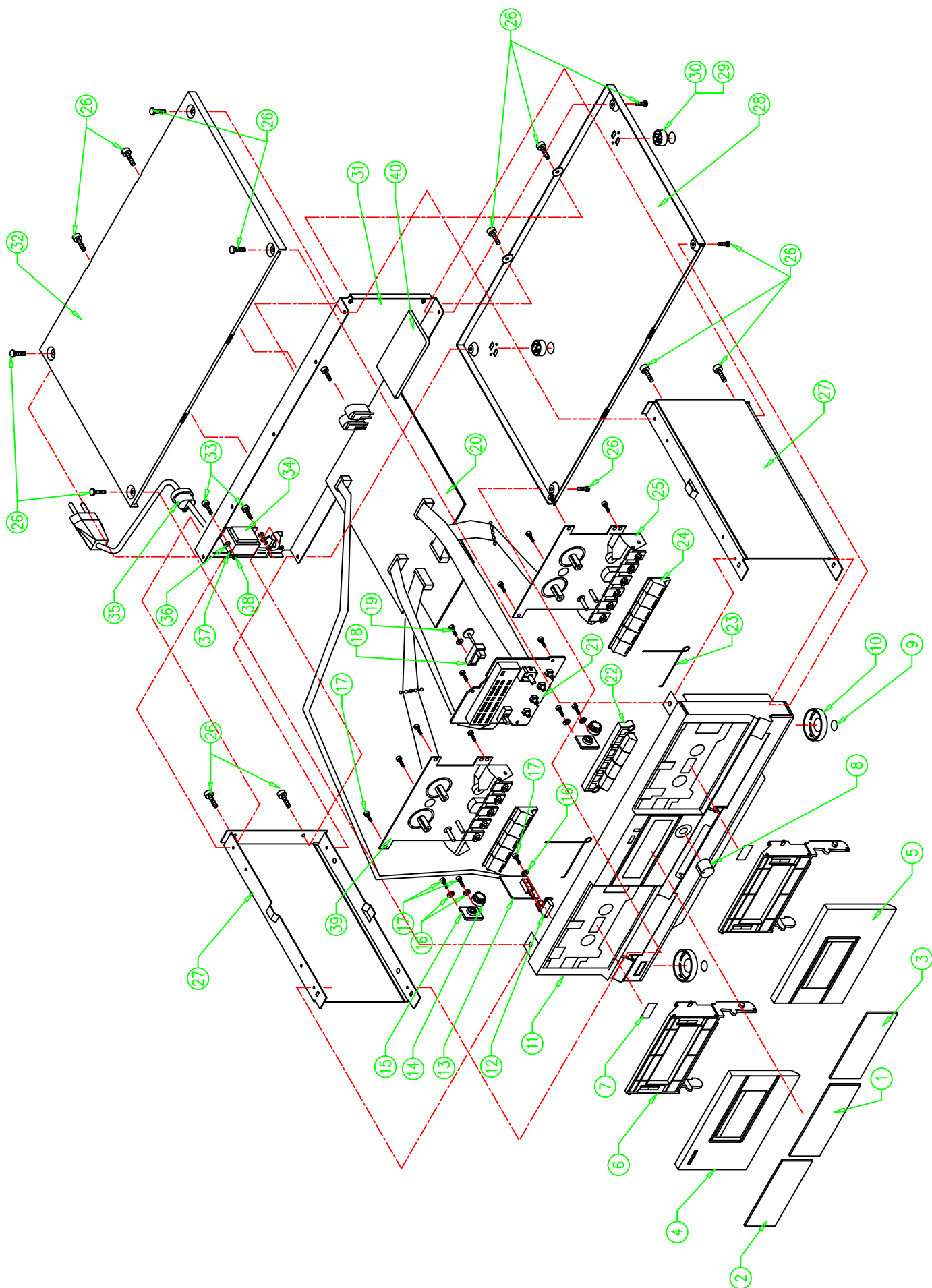




FILE:DK3038-V2-DISPLALY
 P/N:0038-2012-0000
 DATE:07/01/23 HGK







TAPE2PC PART LIST

Sel.	Part no.	Description	Qty.	Remark
1	7438 2014 0100	CASS MIDDLE LENS	1	
2	7432 2024 0100	CASS DOOR LENS (A)	1	
3	7432 2034 0100	CASS DOOR LENS (B)	1	
4	7232 2013 0000	CASSETTE DOOR COVER (L)(A)	1	
5	7232 2022 0501	CASSETTE DOOR COVER (R)(B)	1	
6	7532 2020 0001	CASS DOOR BRACKET	1	
7	8402 0600 0000	CASS. DOOR LABEL (SILVER) (19.0 x 9.0MM)	2	
8	7332 2020 0001	CASS LEVEL VR KNOB	1	
9	7938 1010 0042	FRONT FOOT COVER	2	
10	7736 1901 5000	RUBBER FOOT φ19MM X 1.5MM	2	
11	7038 2012 1001	CASS FRONT PANEL	1	
12	7338 2020 0001	CASSETTE POWER KNOB	1	
13		POWER ON/OFF PCB	1	
14	7932 2010 0001	GEAR WHEEL	2	
15	7932 2020 0001	GEAR WHEEL HOLDER	2	
16	5030 3012 0101	METAL WASHER D3x12x1	7	
17	5013 3008 0010	SCREW PA3.0x8.0	12	
18	1933 1001 0100	M3B-080-150-661	1	
19	5013 3001 0010	SCREW PA2.6 X 10 (M3) (2610A)	8	
20	0038 2002 0002	MAIN PCB	1	
21	0038 2012 0000	DISPLAY PCB	1	
22	7332 2032 0101	CASS FUNCTION KNOB	1	
23	5235 2010 0000	CASSETTE DOOR SPRING (61-200001)	2	
24	7332 2042 0101	CASS KNOB : PAUSE	2	
	7332 2042 0201	CASS KNOB : EJECT	2	
	7332 2042 0301	CASS KNOB : FF	2	
	7332 2042 0401	CASS KNOB : REW	2	
	7332 2042 0501	CASS KNOB : PLAY	2	
	7332 2042 0601	CASS KNOB : REC	1	
25	1992 0058 7300	TK20FX-S873-900	1	
26	5011 3006 0012	SCREW BTB3 X 6 (BLACK)	16	
27	6438 1042 0011	SIDE COVER(AMP&DECK)	2	
28	6238 2233 0011	BOTTOM COVER (CASS,TUNER & EQ)	1	
29	7736 1902 5000	RUBBER FOOT φ19MM X 2.5MM	2	
30	7938 1020 0001	3038 REAR FOOT	2	
31	6338 2400 0000	BACK COVER (CASS)	1	
32	6138 2231 0011	TOP COVER (CASS,TUNER & EQ)	1	
33	5012 3008 0012	BM 3 X 8 (FOR TRANSFORMER)	2	
34	4038 2413 0000	TRANSFORMER	1	
35	7740 1000 0000	BUSHING MP4N4	1	
36	5030 3008 0101	METAL WASHER D3x8x1	2	
37	5040 3006 0101	SPRING WASHER M3	2	
38	5020 3006 0250	NUT M3	2	
39	1992 0058 7400	TK20FX-S874-900	1	
40	0038 2410 0000	USB PCB	1	

Bill Of Materials for Main board.bom

Quantity	Part	Reference
2	TC4066	IC2 IC1
2	BA4558	IC5 IC6
6	2SA1048	Q5 Q34 Q35 Q45 Q54 Q60
2	2SA950	Q26 Q8
1	2SC1627	Q24
5	2SC1815	Q9 Q10 Q11 Q55 Q56
3	2SC2120	Q1 Q36 Q59
4	2SC2240	Q39 Q40 Q41 Q42
30	2SC2458	Q2 Q3 Q4 Q6 Q12 Q13 Q14 Q17 Q18 Q19 Q20 Q21 Q22 Q23 Q25 Q27 Q28 Q31 Q32 Q43 Q44 Q46 Q47 Q48 Q49 Q50 Q51 Q52 Q53 Q61
6	2SC2878	Q15 Q16 Q29 Q30 Q37 Q38
1	KSC2073	Q7
13	1N4148	D1 D2 D3 D4 D10 D11 D12 D13 D15 D16 D17 D18 D19
6	1N4001	D5 D6 D7 D8 D9 D22
2	12B3(12V)	D20 D21
1	6C2(6V)	D30
1	510uH	L1
2	3.9MH	L2 L3
2	10uH	L4 L5
1	AV4-8.4-2	JK1
1	6P*2.0	CON1
1	2P*2.5	CN8
2	3P*2.5	CN9 CN3
2	4P*2.5	CN7 CNP7
1	5P*2.5	CN6
1	7P*2.5	CN1
1	9P*2.5	CN2
1	8P*2.5	CN4
1	10P*2.5	CN5
1	KAN1	SW1
4	200(S.F)	VR6 VR7 VR8 VR9
4	2K(S.F)	VR2 VR3 VR4 VR5
2	50P/50V	C20 C18
4	100P/50V	C73 C74 C79 C80
2	120P/50V	C33 C32
1	220P/50V	C81
2	470P/50V	C103 C104
4	680P/50V	C89 C90 C91 C92
2	0.001uF/50V	C12 C11
4	0.01uF/50V	C30 C43 C59 C105
4	0.1uF/50V	C6 C25 C69 C70
3	0.01uF/100V	C35 C36 C82
2	0.012uF/100V	C50 C52
2	0.053uF/100V	C49 C53
3	0.022uF/100V	C7 C9 C83
2	0.033uF/100V	C87 C88
1	0.047uF/100V	C13
1	0.0047uF/100V	C34
2	0.0056uF/100V	C47 C55
2	0.0068uF/100V	C28 C41
1	2.2(1/2W FR)	R33
1	10(1/2W FR)	R35
1	4.7	R84

1	47	R193
7	100	R30 R31 R62 R90 R96 R116 R228
4	150	R103 R108 R164 R179
3	220	R38 R40 R171
1	270	R59
2	330	R177 R178
2	510	R167 R168
6	560	R32 R34 R39 R42 R79 R220
13	1K	R1 R2 R6 R65 R89 R137 R139 R140
		R145 R156 R157 R160 R219
2	1K2	R136 R132
2	1K5	R100 R112
2	1K8	R101 R111
4	2K2	R29 R52 R53 R85
4	3K3	R22 R27 R51 R54
2	3K9	R73 R72
9	4K7	R9 R14 R16 R18 R75 R138 R141 R155 R173
2	5K6	R135 R131
2	6K2	R98 R113
2	6K8	R148 R37
4	8K2	R71 R74 R99 R114
27	10K	R8 R11 R25 R28 R46 R47 R57 R60 R69 R70
		R78 R80 R82 R93 R95 R102 R104 R106 R107
		R109 R110 R142 R143 R153 R163 R165 R172
		R170 R169
2	18K	R3 R4 R5 R7 R55 R56 R76 R77 R81 R87
15	22K	R105 R129 R133 R144 R149
		R146 R147
2	24K	R183 R182
2	27K	R61 R92 R166 R184
4	33K	R15 R17 R21 R26 R43 R44 R45 R48 R58
21	47K	R66 R67 R68 R86 R94 R130 R134 R150
		R151 R152 R185 R226
5	56K	R83 R161 R162 R180 R181
7	100K	R10 R12 R13 R97 R115 R158 R159
2	150K	R49 R50
2	220K	R88 R64
4	470K	R23 R24 R63 R91
1	680K	R154
2	1M	R41 R36
2	100/10	C42 C38
2	33/16	C48 C54
8	47/16	C2 C3 C27 C31 C40 C45 C57 C102
4	100/16	C37 C75 C78 C99
6	220/16	C15 C17 C19 C76 C84 C85
1	470/16	C77
1	100/25	C10
1	470/25	C101
1	3300/25	C14
2	0.33u/50	C46 C56
2	2.2/50	C5 C4
7	4.7/50	C8 C21 C26 C44 C51 C58 C97
6	1/50	C22 C23 C24 C29 C39 C86
6	10/50	C16 C71 C72 C94 C95 C96

Bill Of Materials for USB board.bom

Qty	Description	Ref. Des.
=====	=====	=====
1	IC TL074 QUAD OPAMP SOP-14	U1

1	PCM2900E SSOP-28	U3
1	CRYSTAL 12 MHz PARALLEL 18pF SMD HC-49/UP	X1
1	CON USB 4-PIN FEMALE PC-MNT HORIZONTAL	J2
1	HEADER SIL 3-PIN 2mm MALE SHRD	J3
1	HEADER SIL 6-PIN 2mm MALE SHRD	J1
1	POT 10KB DUAL HORZ 15mm PLASTIC KNURLED SHAFT	P1
2	RES 0 OHM 1/10W 5% 0805	R15 R17
2	RES 22 OHM 1/10W 5% 0805	R16 R18
4	RES 620 OHM 1/10W 5% 0805	R1-4
4	RES 1K OHM 1/10W 5% 0805	R14 R21 R24 R26
1	RES 1.5K OHM 1/10W 5% 0805	R19
2	RES 2.2K OHM 1/10W 5% 0805	R22-23
2	RES 7.5K OHM 1/10W 5% 0805	R8 R11
2	RES 10K OHM 1/10W 5% 0805	R13 R25
4	RES 30K OHM 1/10W 5% 0805	R7 R9-10 R12
3	RES 1M OHM 1/10W 5% 0805	R5-6 R20
2	CAP 18pF NPO 0805 5% 50V	C16 C23
4	CAP 220pF NPO 0805 5% 100V	C11-12 C24-25
5	CAP 0.1uF X7R 0805 10% 50V	C8 C15 C19 C22 C30
2	CAP 4700pF X7R 0805 10% 50V	C5-6
9	CAP 1uF X7R 0805 10% 10V	C7 C9 C13-14 C17 C21 C27-29
6	CAP 22uF ELEC 16V 20% 1.5x4x7mm	C1-4 C10 C26

Bill Of Materials for Display board.bom

Used	Part Type	Designator
=====	=====	=====
1	AN6884	IC4
1	EM78P257BM	IC5
1	IN4148	D14
1	2SC2458	Q1
1	5C2(5V)	D23
1	4MHz	Z1
10	(G-3MM)LED	LED1 LED2 LED6 LED8 LED9 LED10 LED11 LED14 LED15 LED16
8	(R-3MM)LED	LED3 LED4 LED5 LED7 LED12 LED13 LED17 LED18
1	RK14123004HA(50K)	VR1
1	SS-22F07-M9	K1
4	TSAB-3(7MM)	SW2 SW3 SW4 SW5
1	5P(2.5)	CN6
1	10P(2.5)	CN5
1	15 1/4W	R126
1	220 1/4W	R121
4	330 1/8W	R186 R187 R189 R190
2	680 1/8W	R192 R193
1	1K1/8W	R125
4	10K1/8W	R20 R127 R191 R194
4	47K1/8W	R117 R118 R119 R120
1	220K 1/8W	R13
2	15PF/50V	C109 C110
1	0.001uF/50V	C65
4	0.01uF/50V	C60 C61 C62 C63
1	0.1uF/50V	C100
2	10uF/16V	C66 C67
1	220uF/16	C64
1	0.47uF/50V	C98