

Bu 2,3
Bu 2,1

NF-Verstärker
AF-amplifier

Rundfunk-Platte
Radio board

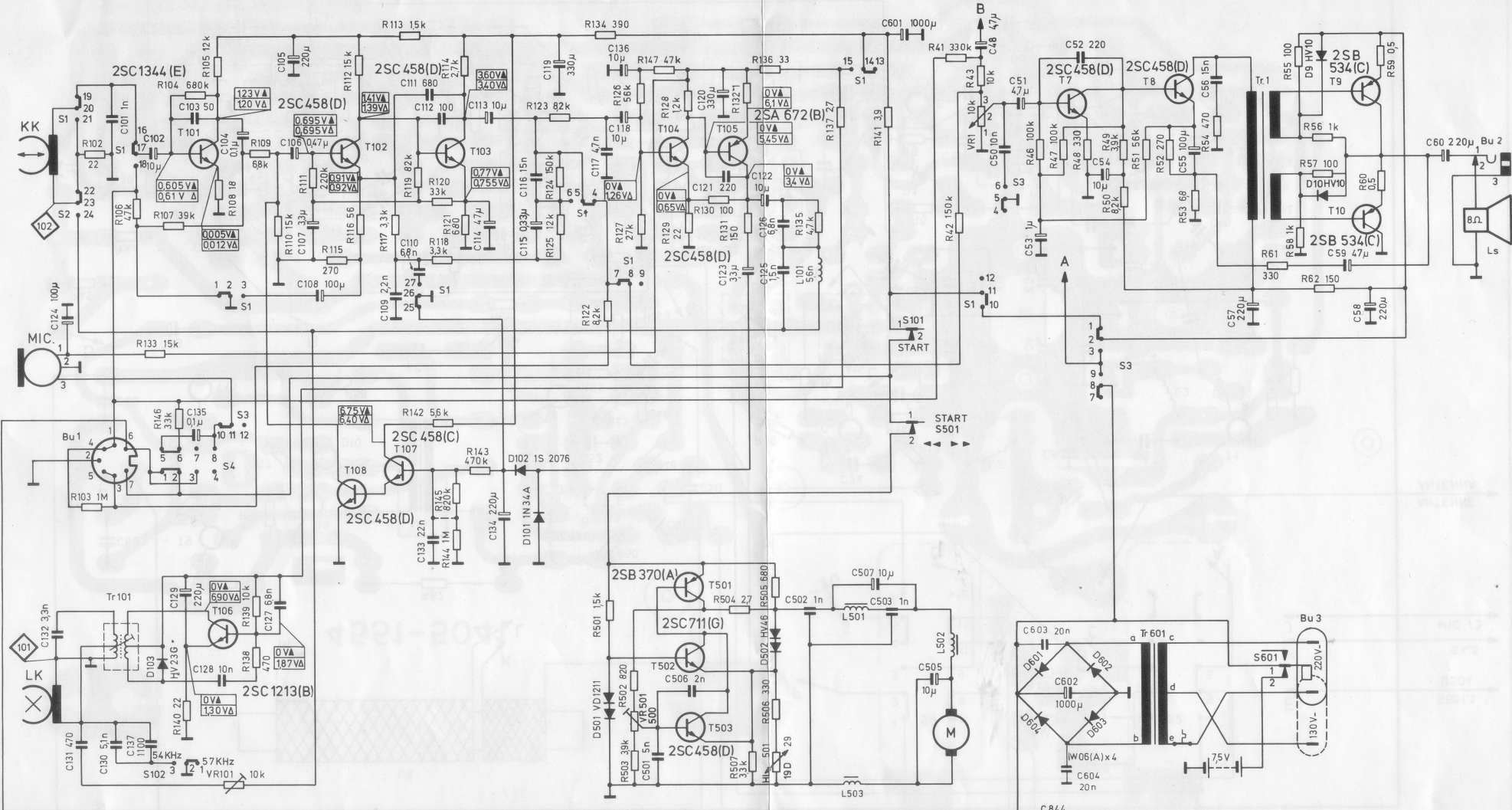
VR1,1
VR1,2
VR1,3

S1,10
S1,8
S1,18

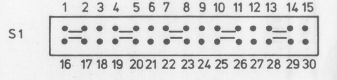
4551-5041

ANTENNE
ANTENNA

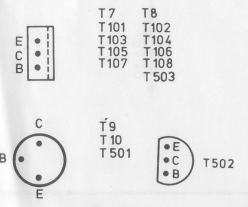
C845



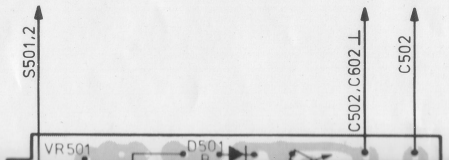
DIE SPANNUNGEN SIND OHNE SIGNAL MIT EINEM INSTRUMENT RI 33KOHM/V BEI 75V BETRIESSPANNUNG GEMESSEN. DIE ANGEZEIGTEN WERTE SIND GEMITTELTE SERIENWERTE. SIE KÖNNEN UM ±10% SCHWANKEN.
 DIE TEILWEISE NUR GERINGFÜGIGEN UNTERSCHIEDE ZWISCHEN WIEDERGABE UND AUFNAHME LIEGEN ENTSPRECHEND DEN TATSÄCHLICH GEMESSENEN WERTEN. IN DER ANGEZEIGTEN GRÖSSENORDNUNG. ▲ SPANNUNGEN BEI GEDRÜCKTER TASTE START GEMESSEN. △ WERTE BEI REC+START GEMESSEN.
 THE VOLTAGE MEASUREMENTS ARE TAKEN WITHOUT SIGNAL AT THE OPERATING VOLTAGE OF 75V WITH A MEASURING INSTRUMENT 33KOHMS/V INTERNAL RESISTANCE THE INDICATED MEASUREMENTS ARE AVERAGE VALUES DETERMINED FROM SERIES MEASUREMENTS. MEASUREMENTS MAY DEVIATE ± 10% THE DIFFERENCES BETWEEN PLAYBACK AND RECORDING, WHICH IN PART ARE ONLY SLIGHT, LIE ACCORDING TO THE ACTUAL MEASUREMENTS. IN THE ORDER OF THE MAGNITUDE INDICATED.
 ▲ VOLTAGES MEASURED WITH START- BUTTON DEPRESSED. △ MEASURED WITH REC+ START BUTTONS DEPRESSED



WIEDERGABE PLAY BACK. ← → AUFNAHME RECORD
 GEZEICHNETE SCHALTERSTELLUNG: BATTERIEBETRIEB, START, WIEDERGABE, POSITION OF SWITCH CONTACTS SHOWN IN CIRCUIT DIAGRAM: BATTERY OPERATION, START, PLAY BACK.

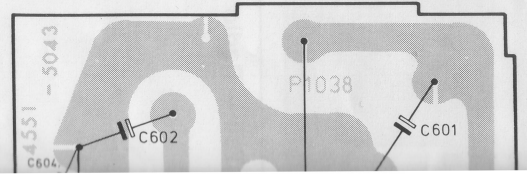


AUS/OFF ← → RADIO



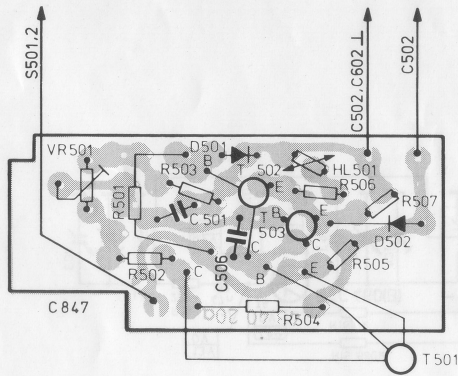
Motorregelung

Netzteil



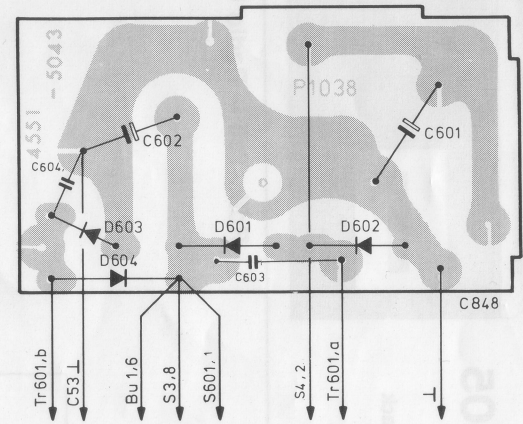
THE INDICATED MEASUREMENTS ARE AVERAGE VALUES DETERMINED FROM SERIES MEASUREMENTS. MEASUREMENTS MAY DEVIATE ± 10% THE DIFFERENCES BETWEEN PLAYBACK AND RECORDING, WHICH IN PART ARE ONLY SLIGHT, LIE ACCORDING TO THE ACTUAL MEASUREMENTS, IN THE ORDER OF THE MAGNITUDE INDICATED.
 ▲ VOLTAGES MEASURED WITH START-BUTTON DEPRESSED, ▲ MEASURED WITH REC+ START BUTTONS DEPRESSED

GEZEICHNETE SCHALTERSTELLUNG: BATTERIEBETRIEB, START, WIEDERGABE, POSITION OF SWITCH CONTACTS SHOWN IN CIRCUIT DIAGRAM: BATTERY OPERATION, START, PLAY BACK.



Motorregelung
Voltage regulator
for motor

Netzteil
Power supply



Aufnahme/Wiedergabeentzerrer-Verstärker
Record and playback, equalizing amplifier

