

SERVICE

MANUAL

P O W E R

AMPLIFIER

H-4200

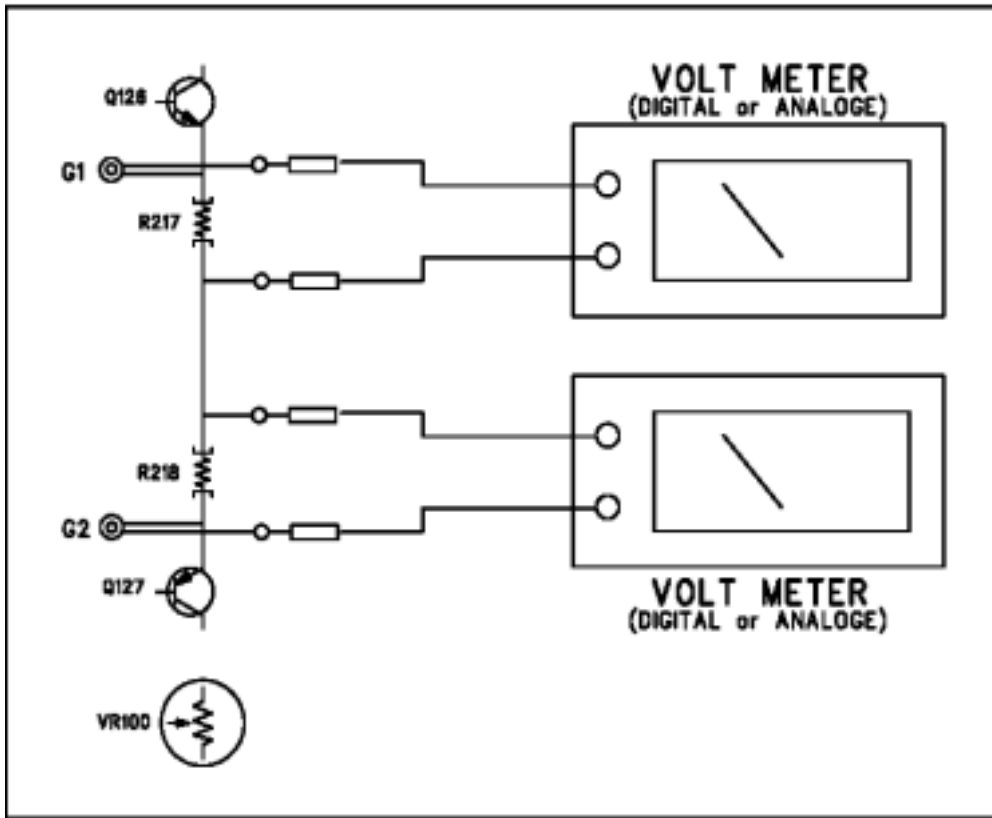
interM

REQUIRED TEST EQUIPMENT

1. Oscilloscope
2. 1kHz audio sine wave generator
3. Digital multimeter
4. 2-ohm resistive load (rated for at least 1200W)

IDLE CURRENT(H-3200/4200)

1. Setting
set the master volume controls minimum
2. Connection



3. Adjustment

While measuring the DC voltage across resistor R217 or R218
adjust VR 100 and VR 100, range as shown below.

Model	DC voltage range	Adjust
-3200/420	80mV 120mV	Channel 1 : DC voltage across R217(3 /2W) or R218(3 /2W), adjust VR100 Channel 2 : DC voltage across R217(3 /2W) or R218(3 /2W), adjust VR100

Current		LOAD	Typical(1/8 Power)	1/3 Power	Full Power
H-3200	120V	8ohm	5.1A	9.3A	21A
		4ohm	8.4A	15.4A	37.6A
		2ohm	9.2A	24A	55.6A
	230V	8ohm	2.2A	5.7A	12.6A
		4ohm	4.3A	9.3A	21.2A
		2ohm	5.7A	14.2A	32.4A
H-4200	120V	8ohm	6A	11.8A	26.8A
		4ohm	8.6A	19.6A	47.2A
		2ohm	12.6A	31.6A	80.8A
	230V	8ohm	3.1A	7A	15.8A
		4ohm	4.6A	11.4A	26.2A
		2ohm	7A	17.8A	40.4A

0dB=0.775 Vrms, Half Power=1/2 Power Output Level (Rated Power)

This specification and performance might change without a prior notice depending on the company's situations.

Specification

	H-3200	H-4200
Power Output Level		
STEREO 1kHz both channels driven		
$R_L=8$ @ 0.1% THD	800W	1000W
$R_L=4$ @ 0.1% THD	1200W	1600W
$R_L=2$ @ 0.1% THD (1ch driven)	1600W	2100W
BRIDGED $R_L=8$ 1kHz @ 0.1% THD	2400W	3000W
$R_L=4$ 1kHz @ 0.5% THD	3200W	4200W
Frequency Response $R_L=8$, $P=1W$	20Hz~20kHz : $\pm 0/1dB$, -3dB : 5Hz~70kHz	
Total Harmonic Distortion(THD+N) f=20Hz~20kHz, 1/10Power		
STEREO $R_L=8$ & 4		0.03%
BRIDGED $R_L=8$		0.03%
Channel Separation Half Power $R_L=8$, f=1kHz, ATT. max. Input 600 shunt		80dB
Residual Noise (DIN Audio Filter)		-85dB: ATT min.
Signal-to-Noise Ratio(DIN Audio Filter) Input 600 Shunt		107dB
Standard Input Sensitivity (Rated Power into 4 1kHz)	1V	1V
Damping Factor $R_L=8$, f=1kHz	450	
Voltage Gain (ATT max.) 4 1kHz	69dB	78dB
Output Circuitry	H- Class	H- Class
Input Impedance (ATT max.)	20k (Balance/Unbalance)	
Indicators	Active, Clip / Limiter, Signal, Protection	
Protection	Power SW ON/OFF muting, Full short circuit Thermal, RF ,Ultrasonic	
Fan Circuit	Low-Speed - Variable - Hi-Speed	
Connectors	Input : balanced combination connector (XLR type + 1/4" TRS) Output : 5-Way binding posts×2, Speakon Terminal×2	
Power Source	100~120VAC or 220~240VAC ; 50/60Hz (Supplied AC mains transformer depends on country requirements)	
Weight	32kg/70.5lb	35kg/77.2lb
Dimensions	482(W)×132(H)×475(D)mm/19(W)×5.2(H)×18.7(D)in	

Input Sensitivity	H-3200		H-4200	
	Gain	Input Sensitivity	Gain	Input Sensitivity
Standard	0dB (×69)	1V	0dB (×78)	1V
Option 1	6dB (×40)	1.73V	6dB (×40)	1.94V
Option 2	12dB (×20)	3.46V	12dB (×20)	3.87V

ELECTRICAL PARTS LIST (H-4200)

Ref No.	Part No.	Description	Value	Qty
AMP(4005178300)				
Q118-125	2028107118	TR PNP 2SA1943 TOSHIBA	2SA1943	8
Q127	2028107995	TR PNP MJE15033 (MOTOROLA)	MJE15033	1
Q135-142	2028407122	TR NPN 2SC5200 TOSHIBA	2SC5200	8
Q126	2028407995	TR NPN MJE15032(MOTOROLA)	MJE15032	1
Q113 Q116 Q145 Q148	2048248100	FET MTP52N06V (N-CH) ON SEMI	MTP52N06V	4
D118 D122	2058100106	DIODE 1N5404	1N5404	2
D116-117 D123 D128	2058300996	DIODE MUR1520 MOTOROLA	MUR 1520	4
D100-102 D105 D110-111 D114-115 D119-121 D126 D129 D131	2058304100	DIODE IN4148M	1N4148	14
D103-104	2058499222	DIODE FRAF804G TAIWAN SEMI	FRAF804G	2
D108 D112	2058502039	DIODE ZENER 1N5228B 3.9BM	3.9V	2
D106-107	2058510150	DIODE ZENER UZP-15BM(1N4744A)	15V 1W	2
D127 D130	2058512150	DIODE ZENER 12V 1W(IN4742A)	12V 1W	2
D109 D113	2058512190	DIODE ZENER 10V 1W(IN4740A)	10V/1W	2
Q149	2078000710	TRIAC BTA41-600B	BTA41-600B	1
IC100 D102	2118013377	IC NE5532N PHILIPS	NE5532N	2
L101	2648099800	COIL INDUTOR 2.2UF	2.2uH	1
R177 R191 R216 R245 R251-254	3039120674	RES MO 12 3W JP	12/3W	8
R250	3039399674	RES MO 3.9 3W JR	3.9/3W	1
R159-162 R175-176 R189-190 R203-204	3039822674	RES MO 8.2K 3W J	8.2K/3W	10
R208-215 R237-244	3059228674	RES CE RGC3 0.22 3W(NOBLE)	0.22 3W	16
C115	3609472140	CAP TXO.0047/200V	TXO.0047/200V	1
CN302	4428595002	LW5267/LWB0640/2.5MM-02P	CN2P	1
CN301	4428595005	LW5267/LWB0640/2.5MM-05P	CN5P	1
CN101	4428595007	LW5267/LWB0640/2.5MM-07P	CN7P	1
CN103	4428595010	LW5267/LWB0640/2.5MM-10P	CN10P	1
CN102	4428595012	LW5267/LWB0640/2.5MM-12P	CN12P	1
E106 E107	4465998210	TERMINAL(250)PCB TAB	250/T	2
D124 D125	2078055960-T	THYRISTOR 2N5064 PHILIPS	2N5064	2
R231	2438000001	POSISTOR NTC 103JYW 40	NTC-10K	1
R247	3029100475-T	RES MF 10 1W JR	10/1W	1
R217-218 R262	3029309575-T	RES MF 3 2W JR	3/2W	3
R222	3029393575-T	RES MF 39K 2W JR	39K/2W	1
R264-265	3032133455-T	RES MO 13.3K 1W FR	13.3K/1W	2
R266-267	3033909455-T	RES MO 9.09K 1W FR	9.09K/1W	2
R248	3039101472-T	RES MO 100 1W T	100/1W	1
R246	3039153475-T	RES MO 15K 1W JR	15K 1W	1
R249	3039569575-T	RES MO 5.6 2W JR	5.6/2W	1
FR207 FR234	3079120475-T	RES NFR 12 1W JR	FR12/1W	2
VR100	3248310126-T	RES SEMI RH063LC 12R 100	100	
C104 C124 C133 C137	3409210071-T	CAP AF RSG 10UF 50V 5 P	10/50(RSG)	4
C107 C119 C121 C134 C138 C144 C149	3409210141-T	CAP AF RSG 100UF 25V 6 P	100/25(RSG)	7
C111 C114	3409222171-T	CAP AF RSG 220UF 50V SG 10 P	220/50(RSG)	2
C100	3409247044-T	CAP RG 47UF 25V	47/25(RG)	1
C103 C117	3409810131-T	CAP AF NP 100UF 16V	100/16(NP)	2
C128	3409822071-T	CAP AF NP 22UF 50V 8 P	22/50(NP)	1
C127	3609104153-T	CAP TL 0.1UF 250V(SAMWHA)	TL0.1/250V	1
C120	3609152153-T	CAP TX 0.0015UF 200V(SAMWHA)	TX0.0015/200V	1
C108-109	3609154122-T	CAP MA 0.15UF 100V MINI	0.15/100	2
C122-123	3609222120-T	CAP MA 0.0022UF 100V J	MA0.0022	2
C105		CAP MA 0.22UF 100V J MINI	0.22/100	1
C129-130	3609683153-T	CAP TL 0.068UF 250V(SAMWHA)	TL0.068/250	2
C125-126 C139 C145	3639103253-T	CAP TL 0.01UF 250V	TL0.01/250v	4
G1-8	4225000810-T	TEST POINT (NZ0352-001Z)	TEST POINT	8
AN106	4428588816	WAFER B16P-XL-HDS JST(5MM)	JST16P	

Q103-104 Q106 Q112 Q115 Q117 Q131 Q133 Q144 Q147	S20510405004	2N3906S-RTK	3906(S)ZAAD	10
Q101-102 Q105 Q107-109 Q111 Q114 Q128-130 Q132 Q134 Q143 Q146	S20560448002	TR NPN 2N3904 SOT23 HSMC	3904(S)1A	15
IC101	S21101167701	IC NE5517D PHILIPS	NE5517D	1
IC103-106	S21102087701	IC LM311D-T(VOLT COM)PHILPS	LM311M	4
R139	S30101007440	RES TF 10J 1/4W 3216	10(3)	1
R125-126 R256	S30101017231	RES TF 100 1/10W 2012	100(2)	3
R206 R235	S30101017440	RES TF 100J 1/4W 3216	100(3)	2
R102	S30101027231	RES TF 1K 1/10W 2012	1K(2)	1
R100-101 R103-104 R145-146 R255	S30101037231	RES TF 10K 1/10W 2012	10K(2)	7
R228 R232	S30101047231	RES TF 100K 1/10W 2012	100K(2)	2
R105 R255	S30101227231	RES TF 1.2K 1/10W 2012	1.2K(2)	2
R157 R173 R276 R278	S30101237231	RES TF 12K 1/10W 2012	12K(2)	4
R127	S30101547340	RES TF 150K J 3216	150K(3)	1
R138	S30102017231	RES TF 200 1/10W 2012	200(2)	1
R121-122	S30102037231	RES TF 20K 1/10W 2012	20K(2)	2
R187 R201 R227 R259 R260	S30102227231	RES TF 2.2K J 1/10W 2012	2.2K(2)	5
R131-132	S30102437231	RES TF 24K 1/10W 2012	24K(2)	2
R226 R269	S30102737231	RES TF 27K 1/10W 2012	27K(2)	2
R137 R142	S30103907441	RES TF 39 1/4W 3216	39(3)	2
R141 R144 R271 R123 R221 R233	S30103917231	RES TF 390 1/10W 2012	390(2)	6
R158 R174 R188 R202	S30104707231	RES TF 47 1/10W 2012	47(2)	4
R135 R149 R152 R165 R168 R183-184 R198-199	S30104727231	RES TF 4.7K 1/10W 2012	4.7K(2)	9
R109 R153 R169 R180	S30104737231	RES TF 47K 1/10W 2012	47K(2)	5
R120	S30104737440	RES TF 47KJ 1/4W 3216	47K(3)	1
R205 R236	S30104797440	RES TF 4.7J 1/4W 3216	4.7(3)	2
R230	S30106217330	RES TF 620J 1/8W 2012	620(2)	1
R124R R133 R273	S30107527230	RES TF 7.5K J 1/10W 2012	7.5K(2)	3
R229	S30108207231	RES TF 82 1/10W 2012	82(2)	1
R134 R219-220 R224	S30108217340	RES TF 820 J 3216	820(3)	4
R147-148 R150-151 R163-164 R166-167 R178-179 R181-182 R192-193 R194-195 R258	S30111045440	RES TF 100KF 1/4W 3216	100KF(3)	17
R129 R154 R170 R185 R197 R223 R257 R261	S30114645340	RES TF 464K F 1% 3216	464KF(3)	8
R130	S30114995340	RES TF 499K F 3216	499KF(3)	1
R156 R172 R263 R268 R270 R272 R274-275 R277	S30133015230	RES TF 3.01K F 1% 2012	3.01K(2)	9
R140 R143 R155 R171	S30135905230	RES TF 5.9K F 1% 2012	5.9KF(2)	6
R107-108	S30146345440	RES TF 634F 1/4W 3216	634F(3)	2
R136 R106 R128	S30147875330	RES TF 787F 1/8W 2012	787F(2)	3
C101-102 C132 C136 C143 C148	S35101014331	CAP CE C 100PF 50V J 0805(2012)	100P(2)	6
C106 C142 C147	S35101044344	CAP CE0.1UF 50V J(3216)	0.1/50(3)	3
C118	S35103325331	CAP CE 0.0033UF 50V 0805(2012)	0.0033/50(2)	1
C131 C135 C140 C146	S35104704331	CAP CE C 47PF 50V J 0805(2012)	47P(2)	4
C113	S35105625544	CAP CE 5600PF 250V K 3216	0.0056/K(3)	1
C110	S35200504544	CAP CE 5PE 200V 3216	5P 200V(3)	1
C116	S3520101444	CAP CE 100PF 50V K 3216	100P(3)	1
C112	S35205604544	CAP CE 56P 200V J 3216	56P(3)	1
E101-104	4355708704	CON ASS'Y 4P (110MM)RED/BLK	CH1	CH1
E101-104	4355708804	CON ASS'Y 4P (110MM)WHT/BLK	CH2	CH2
E105	4355708800	CON ASS'Y 1P (160MM)BLK		1
	4255000410	FUSE CLIP 6*31.8		
	1608199520	SIL PAD 900SAC(TO-220)		

	4808999310	CAP SW-040-140		
	1678999910	MAXGAIN TO-220 (BERGQUIST)		

INPUT(4005178200)

JK302 JK304	4438086010	JACK XLR(M) NC3MAV NEUTRIK	XLR JACK	2
JK301 JK303	4438086210	JACK COMBO NCJ6FI-V NEUTRIK	NCJ6FI-V	2
SW303-306	4618499310	SW SLIDE SS84017-0403-5.3T-FN	SS84017	4
SW301-302	4628980110	SW PUSH JPS2281EAB JEIL	JPS2281EAB	2
C308-309 C318-319	3409210141-T	CAP AF RSG 100UF 25V 6 P	100/25(RSG)	4
C301-302 C311-312	3509471130-T	CAP CE SL 470PF 50V J	470P(2)	4
AN102	4355708900	CON ASS'Y 12P (260MM)		1
AN202	4355706400	CON ASS'Y 13P (260MM)		1
AN207	4355706613	CON ASS'Y FLAT 6P (270MM)		1
U1-2	6505955520	PCB BKT MX-400		2
IC301-302	S21101087701	IC OPAMP NE5532AD8 PHI	NE5532A	2
D301-302 D311-312	S22400505002	DIODE KDS135S HIGH VOLT(KEC)	KDS135S	4
R301-302 R305 R311-312 R315 R323-324	S30101037231	RES TF 10K 1/10W 2012	10K(2)	8
R306 R316	S30101047231	RES TF 100K 1/10W 2012	100K(2)	2
R309 R319	S30101637330	RES TF 16K J 1/8 (2012)	16K(2)	2
R303-304 R313-314	S30102037231	RES TF 20K 1/10W 2012	20K(2)	4
R310 R320 R330 340	S30103907231	RES TF 39 1/10W 2012	39(2)	4
R307 R317	S30103927231	RES TF 3.9K 1/10W 2012	3.9K	2
R321 R325	S30108217231	RES TF 820 1/10W 2012	820(2)	2
R308 R318	S30108227231	RES TF 8.2K 1/10W 2012	8.2K	2
C305 C315	S34114700642	CAP SC 47UF 25V SAMWHA	47/25(S)	2
C307 C310 C317 C320	S35101044344	CAP CE0.1UF 50V J(3216)	0.1/50(3)	4
C306 C316	S35102204339	CAP CL 22PF 50V J 2012	22P(2)	2
C303-304 C313-314	S35105604331	CAP CE C 56PF 50V J 0805(2012)	56P(2)	4

OUTPUT(4005178210)

E111-114	4355708700	CON ASS'Y 4P (280MM) RED/BLK	CH1	4
E211-214	4355708716	CON ASS'Y 4P (360MM)WHT/BLK	CH2	4
JK1	4438085910	BINDING POST FCR159706PA CLIFF	FCR159706PA	1
JK3	4438085920	BINDING POST FCR159706PB CLIFF	FCR159706PB	1
JK2 JK4	4438086110	JACK SPEAKON NL4MD-V NEUTRIK	SPEACON	2

DICPLAY(4005178220)

AN103 A203	4355709021	CON ASS'Y 10P (510MM)		2
LD400 LD402 LD404 LD406	2300050100	LED LTL-307E LITEON	RED	4
LD401 LD403 LD405 LD407	2300052100	LED LTL-307G LITEON	GREEN	4
	8545993660	LIMITER LED SX-6		
VR400-401	3228067000	VR RV110-40E1 2.5KB ALPHA	2.5KB	2
R400-401	S30342745330	RES MF 274 F 2012	274(2)	2

NTC(4005178230)

E700-706	4465998210	TERMINAL(250)PCB TAB	250/T	7
R700-703	2438209990	THERMISTER NTC-2D-30	2 OHM 30A	4

POWER TOP(4005178100)

Q501 Q503 Q505-506	S20510405004	2N3906S-RTK	3906(S)ZAAD	4
C521	3409247071-T	CAP AF RSG 47UF 50V 6 P	47/50(RSG)	1
C522	S34111000422	CAP AF SC 10UF 50V 6.3P	EC10/50(S)	1
C519	3569474145-T	CAP CE 0.47UF MULTILAYER	CE474	1
C520	S35101044344	CAP CE0.1UF 50V J(3216)	0.1/50(3)	1
C504-515	3409215385	CAP LSW153M1JQ50M JAMICON	15000/63	12
C517-518	3408222249	CAP SD 2200UF 25V (12.5*25)	2200/25(SD)	2
C501-503	3609224153-T	CAP TL 0.22UF 250V(SAMWHA)	TL0.22/250	3
AN401	4355709013	CON ASS'Y 5P FLAT (270MM)		1
AN201	4355709007	CON ASS'Y 7P FLAT (150MM)		1
BR504	S22201500009	DIODE BRIDGE DBS105G	200V 1A	1
BR501-503	2058100978	DIODE BRIDGE GL3504 PANJIT	400V 35A	3
D501-503	2058304100	DIODE IN4148M	1N4148	3
D504	2058510075	DIODE ZENER UZP-7.5BM(1N4737A)	7.5V-1W	1
CN107	4428595003	LW5267/LWB0640/2.5MM-03P	3P	1
CN209	4428595005	LW5267/LWB0640/2.5MM-05P	5P	1

CN105 CN108	4428595006	LW5267/LWB0640/2.5MM-06P	6P	2
R521	3059121776	RES CE 120 5W J	120/5W	1
R512	3023105455	RES MF 1.05K 1W FR	1.05KF/1W	1
R522-523	3039560575-T	RES MO 56 2W J RADIAL	56/2W	2
R514-515 R519	S30101527440	RES TF 1.5KJ 1/4W 3216	1.5K(3)	3
R516 R518	S30101037231	RES TF 10K 1/10W 2012	10K(2)	2
R505	S30101847440	RES TF 180KJ 1/4W 3216	180KF(3)	1
R520	S30102227231	RES TF 2.2K J 1/10W 2012	2.2K(2)	1
R509	S30102237231	RES TF 22K 1/10W 2012	22K(2)	1
R517	S30102437231	RES TF 24K 1/10W 2012	24K(2)	1
R513	S30103907231	RES TF 39 1/10W 2012	39(2)	1
R506 R510	S30114645340	RES TF 464K F 1% 3216	464KF(3)	2
R508	S30104737231	RES TF 47K 1/10W 2012	47K(2)	1
R507	S30135905230	RES TF 5.9K F 1% 2012	5.9KF(2)	1
R511	S30105137440	RES TF 51K J 3216	51K(3)	1
R501-502	2423000999	SW POLY 50VX110 JX3K-T	1.1A 0.15 OHM	2
E501-506	4465998210	TERMINAL(250)PCB TAB	250/T	6
Q504	S20560448002	TR NPN 2N3904 SOT23 HSMC	3904(S)1A	1
Q502	S20560400001	TR NPN SBT222A SOT23 AUK	SBT222A	1
Q507	2028400882	TR NPN TIP31TU FSC	TIP31C	1
CN206	4428588816	WAFER B16P-XL-HDS JST(5MM)	16P	1
	4808999310	CAP SW-040-140		
	1608199520	SIL PAD 900SAC(TO-220)		

POWER BOTTOM (4005177400)

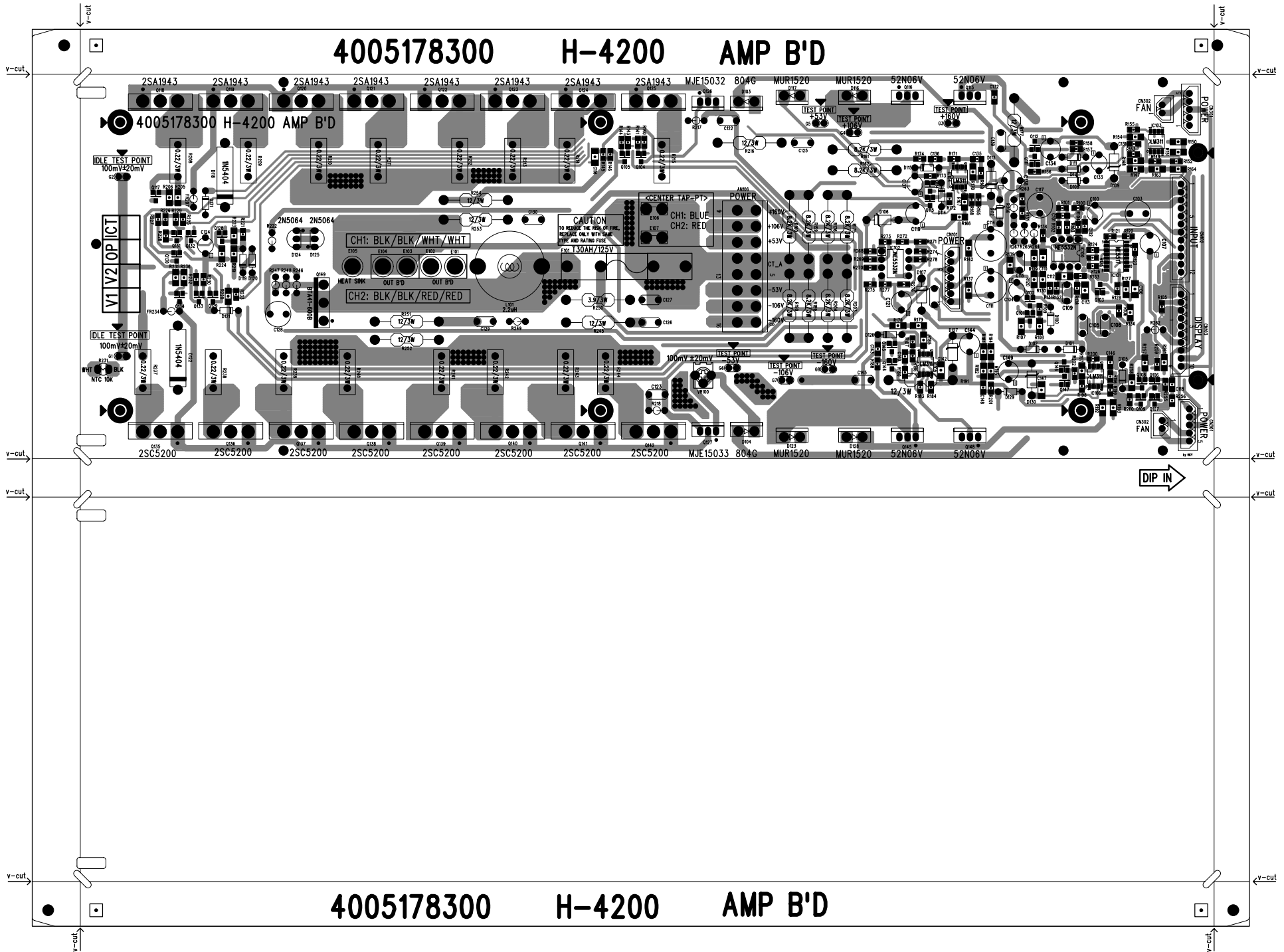
Q601 Q603 Q605 Q606	S20510405004	2N3906S-RTK	3906(S)ZAAD	4
C621	3409247071-T	CAP AF RSG 47UF 50V 6 P	47/50(RSG)	1
C622	S34111000422	CAP AF SC 10UF 50V 6.3P	EC10/50(S)	1
C619	3569474145-T	CAP CE 0.47UF MULTILAYER	CE474	1
C620	S35101044344	CAP CE0.1UF 50V J(3216)	0.1/50(3)	1
C604-615	3409215385	CAP LSW153M1J050M JAMICON	15000/63	12
C617-618	3408222249	CAP SD 2200UF 25V (12.5*25)	2200/25(SD)	2
C601-603	3609224153-T	CAP TL 0.22UF 250V(SAMWHA)	TL0.22/250	3
AN107	4355709011	CON ASS'Y 3P (230MM)		1
AN109	4355709013	CON ASS'Y 5P FLAT (270MM)		1
AN101	4355709007	CON ASS'Y 7P FLAT (150MM)		1
AN104	4355706207	CON ASS'Y FLAT 4P (150MM)		1
AN301	4355706305	CON ASS'Y FLAT 5P (120MM)		1
BD604	S22201500009	DIODE BRIDGE DBS105G	200V 1A	1
BD601-603	2058100978	DIODE BRIDGE GL3504 PANJIT	400V 35A	3
D601-603	2058304100	DIODE IN4148M	1N4148	3
D604	2058510075	DIODE ZENER UZP-7.5BM(1N4737A)	7.5V-1W	1
R621	3059121776	RES CE 120 5W J	120/5W	1
R612	3023105455	RES MF 1.05K 1W FR	1.05KF/1W	1
R622-623	3039560575-T	RES MO 56 2W J RADIAL	56/2W	2
R614-615 R619	S30101527440	RES TF 1.5KJ 1/4W 3216	1.5K(3)	3
R616 R618	S30101037231	RES TF 10K 1/10W 2012	10K(2)	2
R605	S30101847440	RES TF 180KJ 1/4W 3216	180KF(3)	1
R620	S30102227231	RES TF 2.2K J 1/10W 2012	2.2K(2)	1
R609	S30102237231	RES TF 22K 1/10W 2012	22K(2)	1
R617	S30102437231	RES TF 24K 1/10W 2012	24K(2)	1
R613	S30103907231	RES TF 39 1/10W 2012	39(2)	1
R606 R610	S30114645340	RES TF 464K F 1% 3216	464KF(3)	2
R608	S30104737231	RES TF 47K 1/10W 2012	47K(2)	1
R607	S30135905230	RES TF 5.9K F 1% 2012	5.9KF(2)	1
R611	S30105137440	RES TF 51K J 3216	51K(3)	1
R601-602	2423000999	SW POLY 50VX110 JX3K-T	1.1A 0.15 OHM	2
E601-606	4465998210	TERMINAL(250)PCB TAB	250/T	6
Q604	S20560448002	TR NPN 2N3904 SOT23 HSMC	3904(S)1A	1
Q602	S20560400001	TR NPN SBT222A SOT23 AUK	SBT222A	1

Q607	2028400882	TR NPN TIP31TU FSC	TIP31C	1
CN106	4428588816	WAFER B16P-XL-HDS JST(5MM)	16P	1
	4808999310	CAP SW-040-140		
	1608199520	SIL PAD 900SAC(TO-220)		

ASS'Y

	2828055300	TRANS POWER H-3200 100V	J	
	2828055310	TRANS POWER H-3200 120V	E	
	2828055320	TRANS POWER H-3200 220V		
	2828055330	TRANS POWER H-3200 230V	R	
	2828055340	TRANS POWER H-3200 240V	C	
	2828055340	TRANS POWER H-3200 240V	D	
	4308987910	AC CORD ASS'Y (H-3200/4200)	AC CABLE	
	4355708803	CON ASS'Y 1P (100MM)BLK		
	4355708809	CON ASS'Y 16P (190MM)		
	4648099920	SW POWER AJ1-B0-44-635-5C2-C	J, E	
	4648099810	SW POWER AJ1-B0-44-618-5C2-D	, R, C, D	
	5508124621	FUSE SB 31.8MM 30A 125V		
	7308997310	FAN (4715KL-05W-B20-P00) NMB		

4005178300 H-4200 AMP B'D



4005178300 H-4200 AMP B'D

CH1: BLK/BLK/WHT/WHT

CH2: BLK/BLK/RED/RED

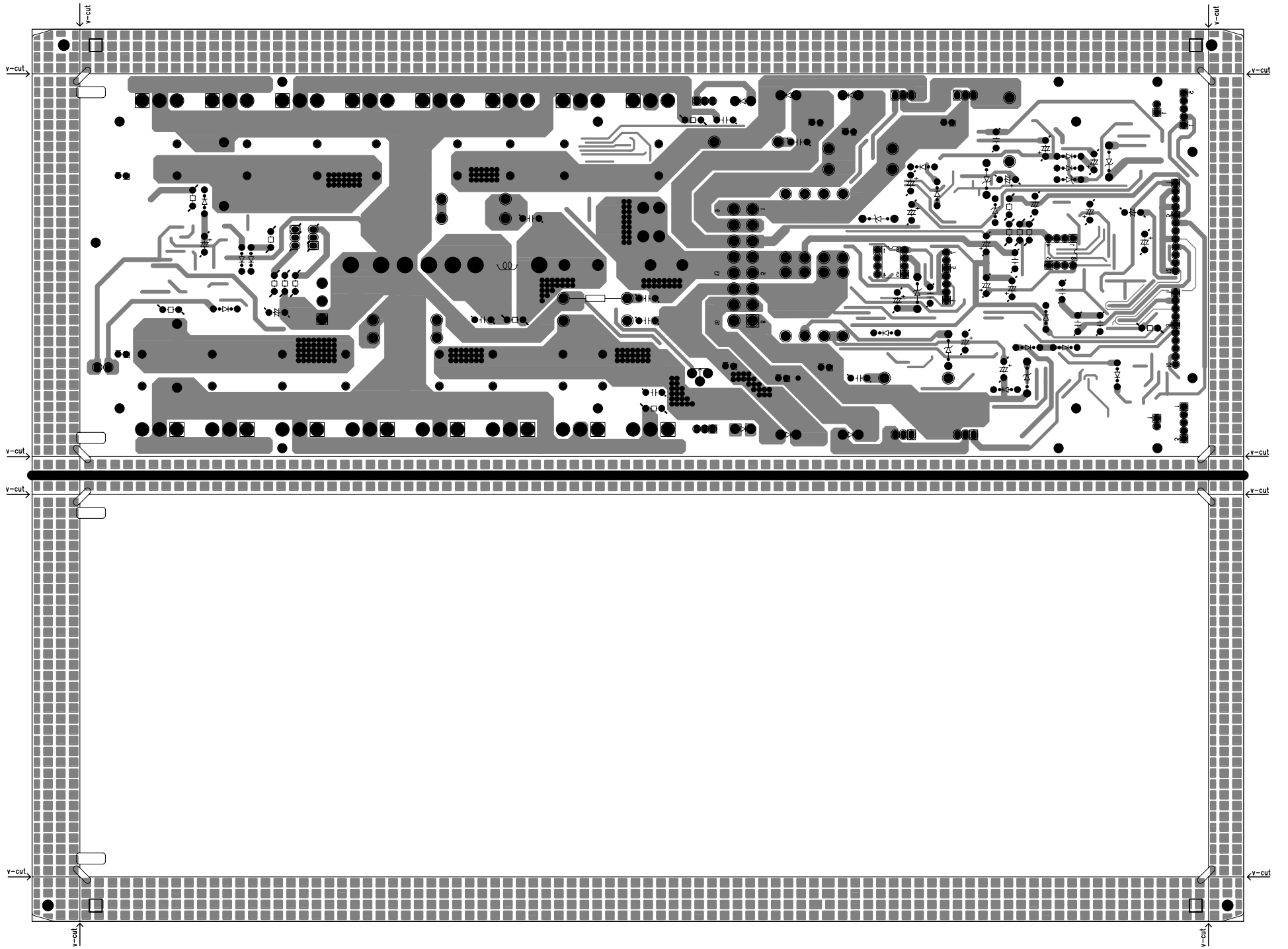
CAUTION
TO REDUCE THE RISK OF FIRE,
REPLACE ONLY WITH SAME
TYPE AND RATING FUSE.
FUSE: 130AH/125V

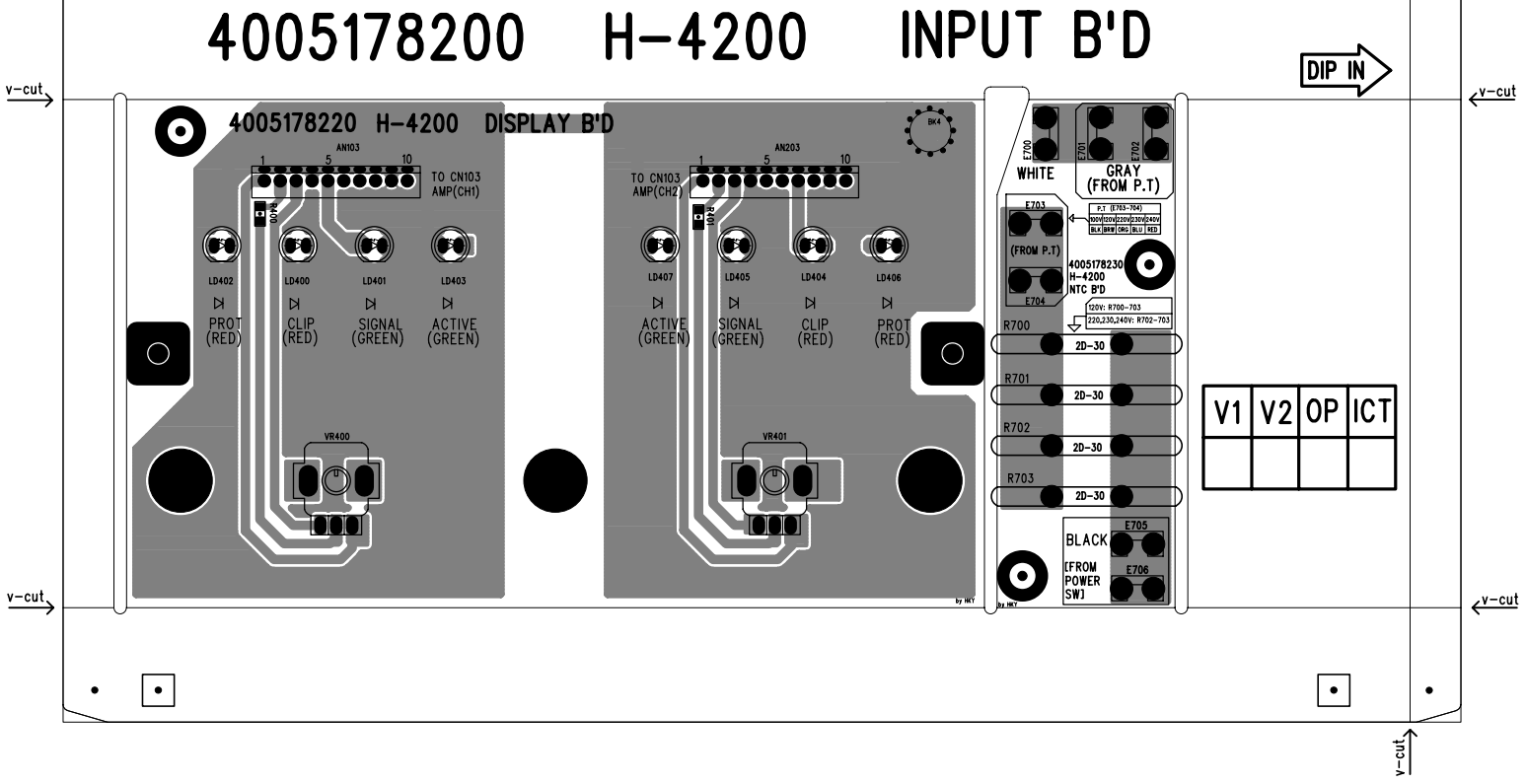
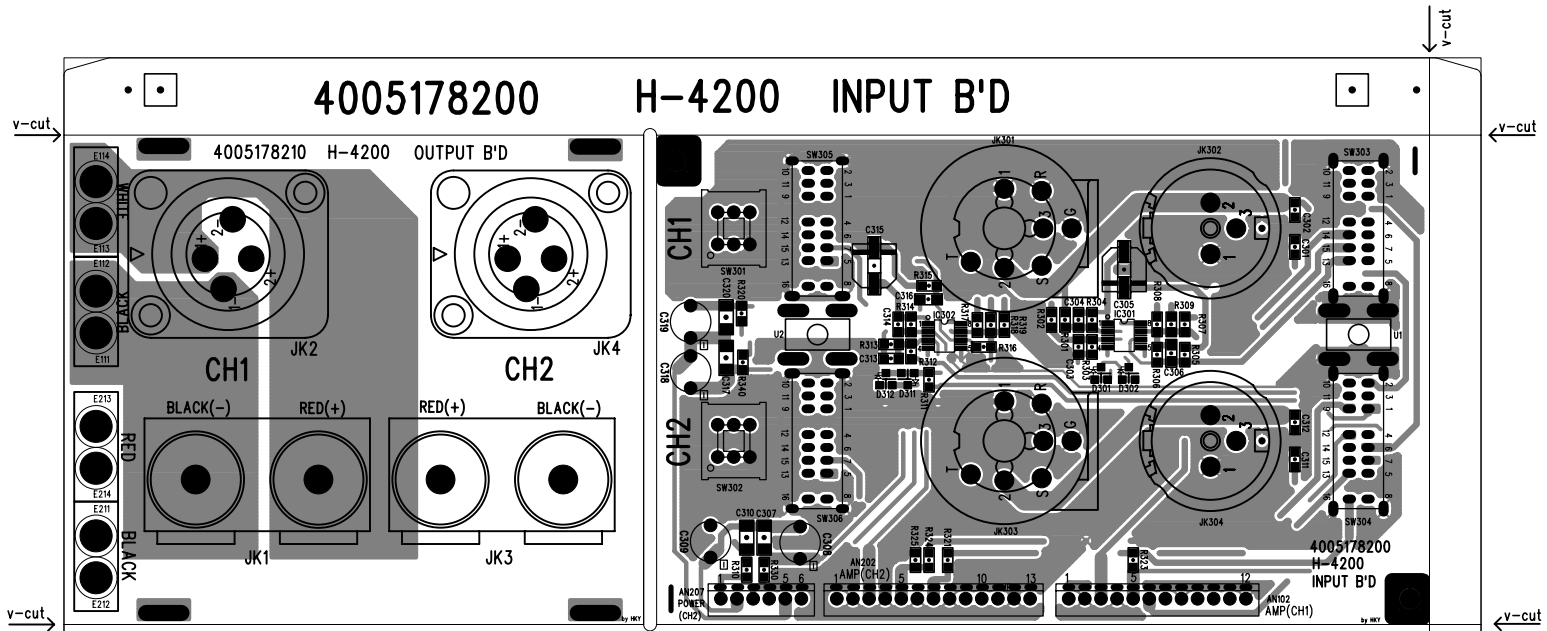
POWER

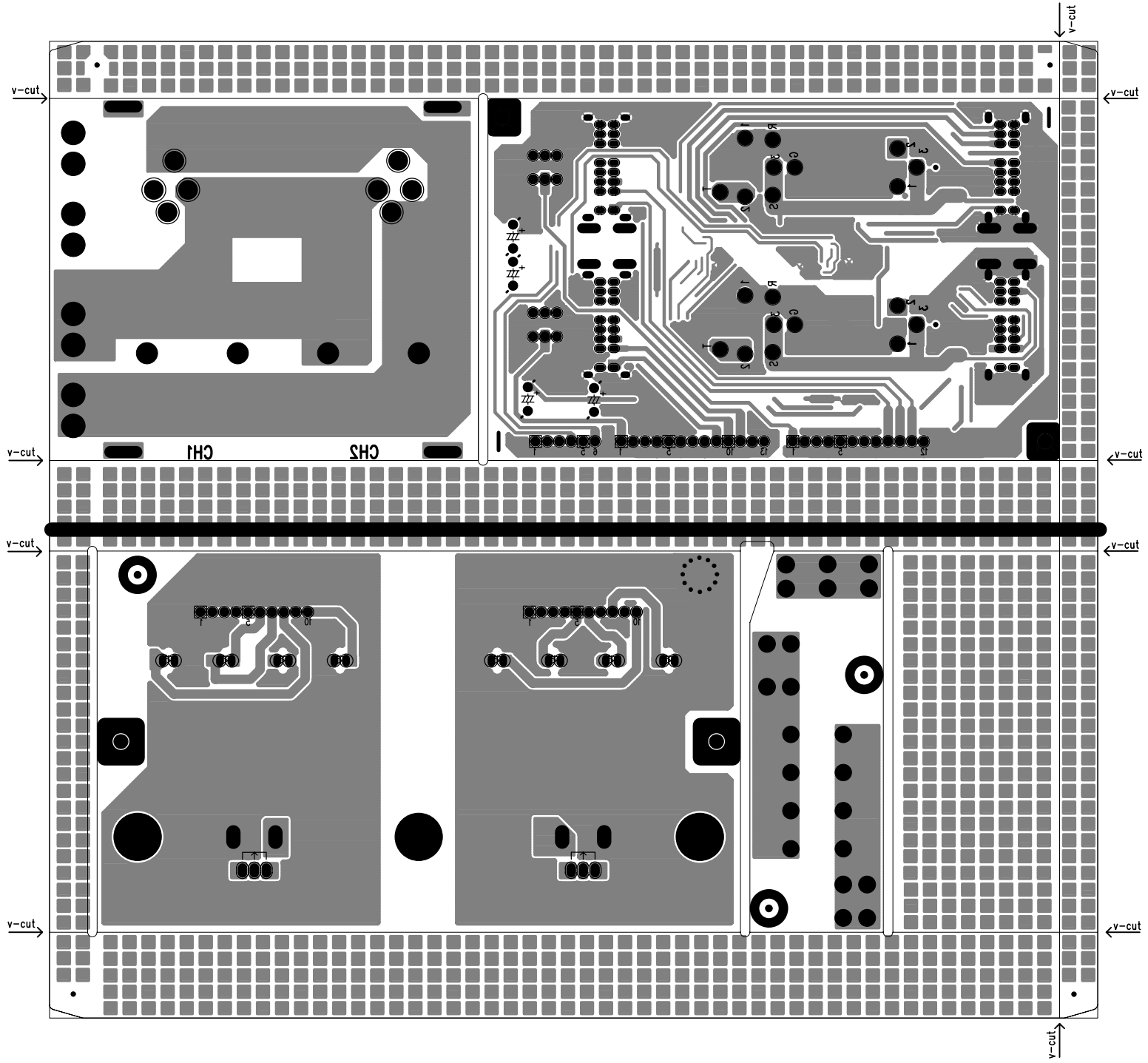
POWER

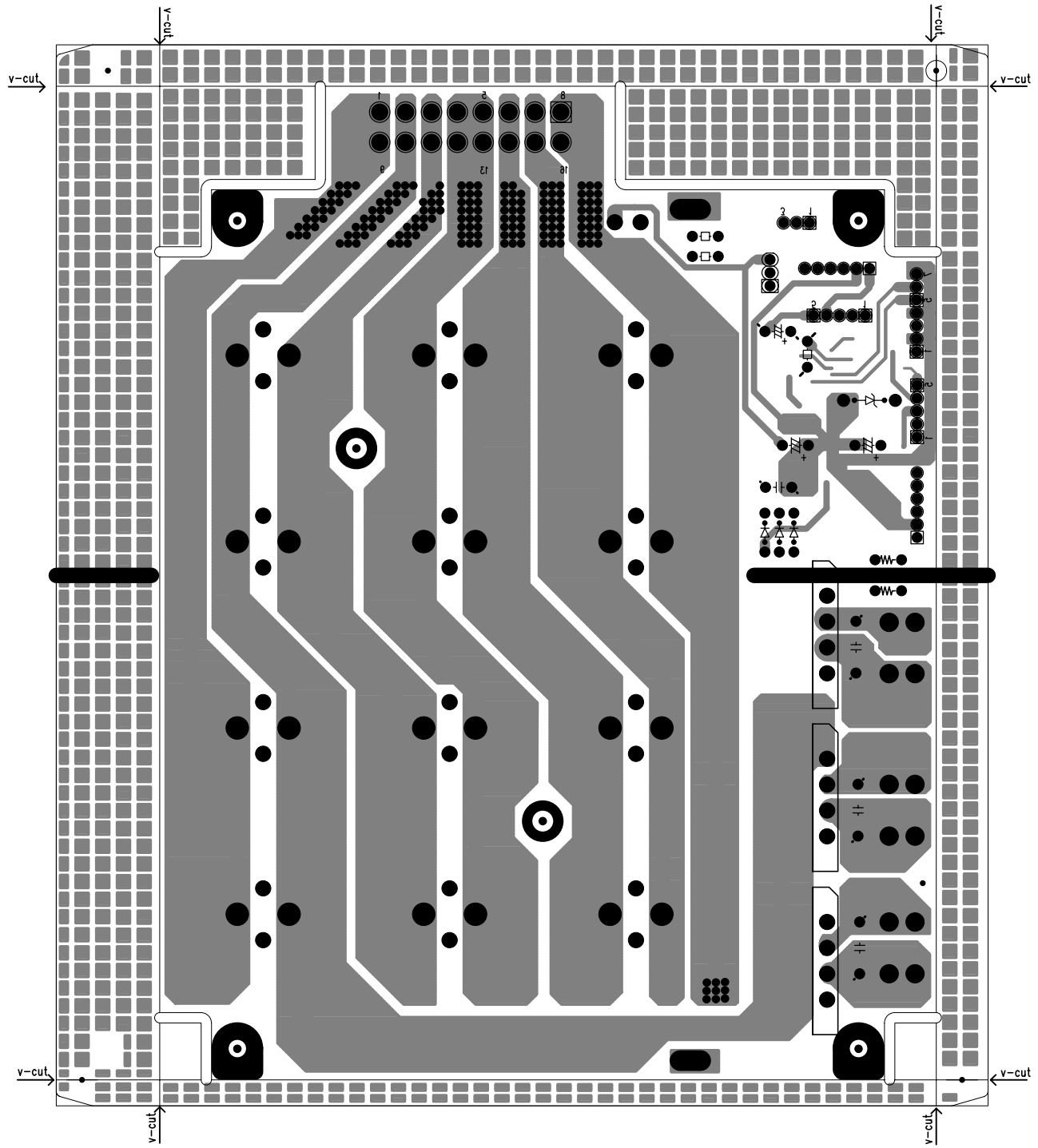
DIP IN

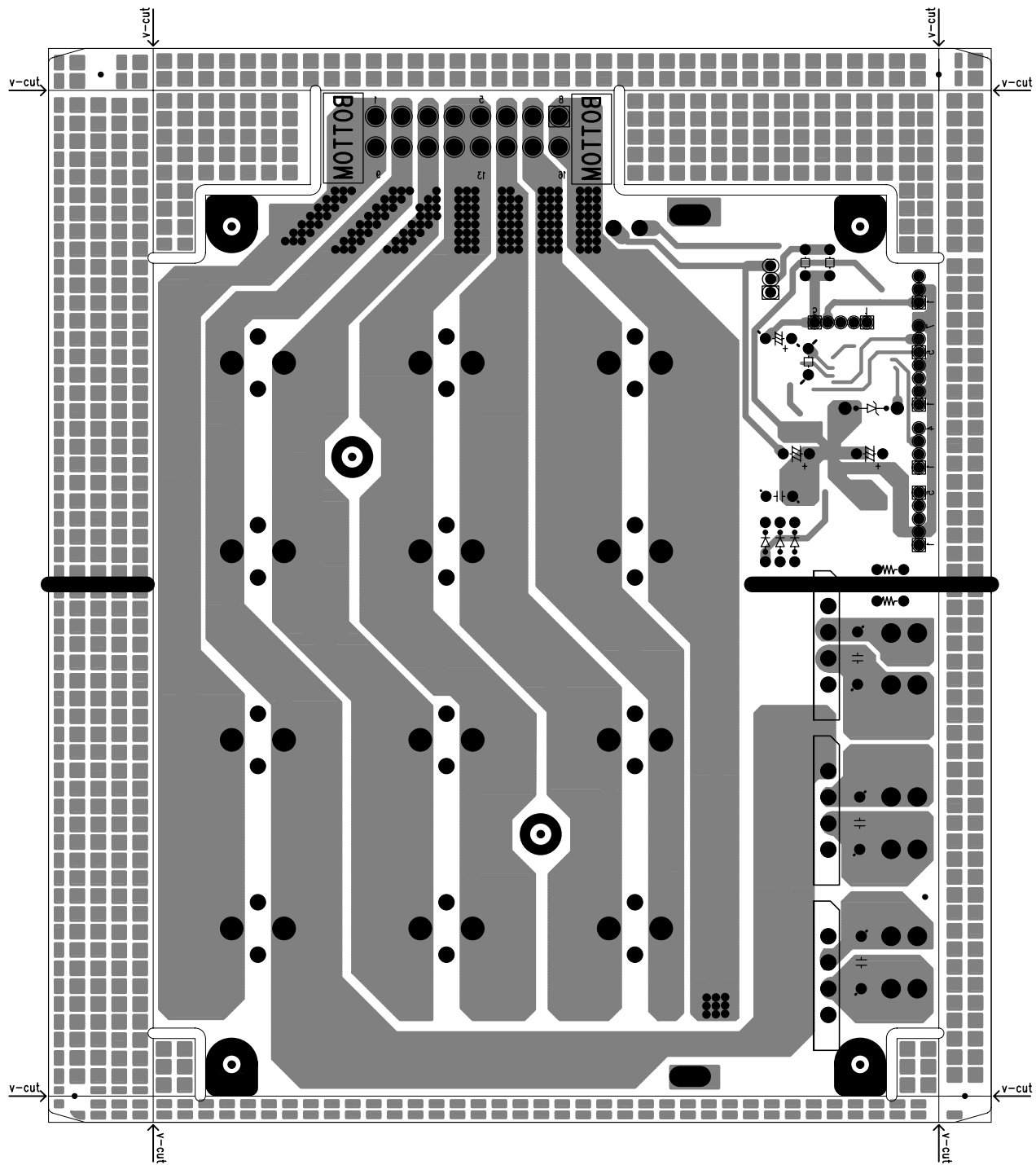
4005178300 H-4200 AMP B'D

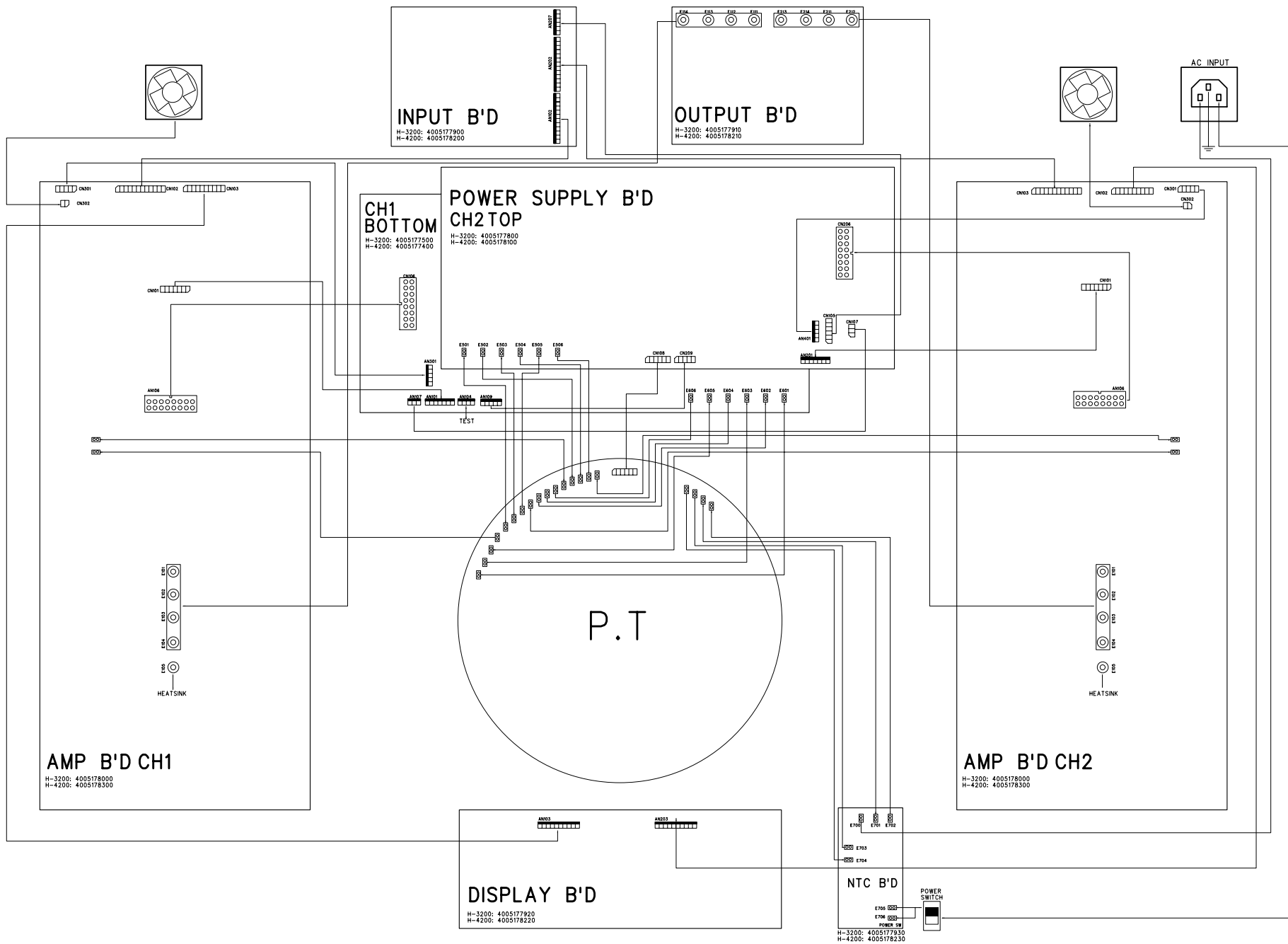












INPUT B'D
 H-3200: 4005177900
 H-4200: 4005178200

OUTPUT B'D
 H-3200: 4005177910
 H-4200: 4005178210

POWER SUPPLY B'D
 CH1 BOTTOM
 H-3200: 4005177900
 H-4200: 4005177400

CH2 TOP
 H-3200: 4005177800
 H-4200: 4005178100

AMP B'D CH1
 H-3200: 4005178000
 H-4200: 4005178300

AMP B'D CH2
 H-3200: 4005178000
 H-4200: 4005178300

DISPLAY B'D
 H-3200: 4005177820
 H-4200: 4005178220

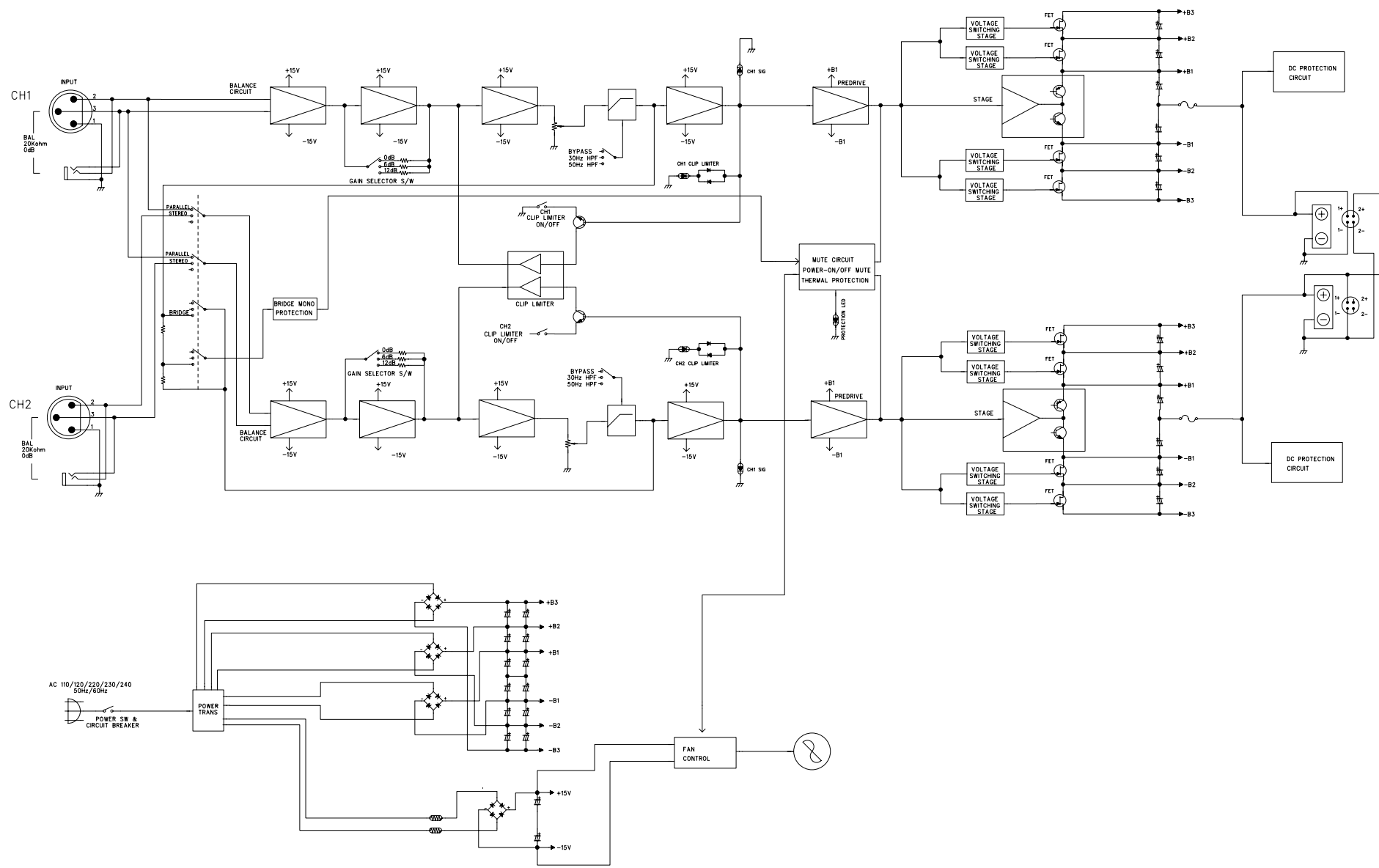
NTC B'D
 E706
 E708
 E709
 E707
 E702
 E703
 E704
 POWER SWITCH
 H-3200: 4005177830
 H-4200: 4005178230

P.T

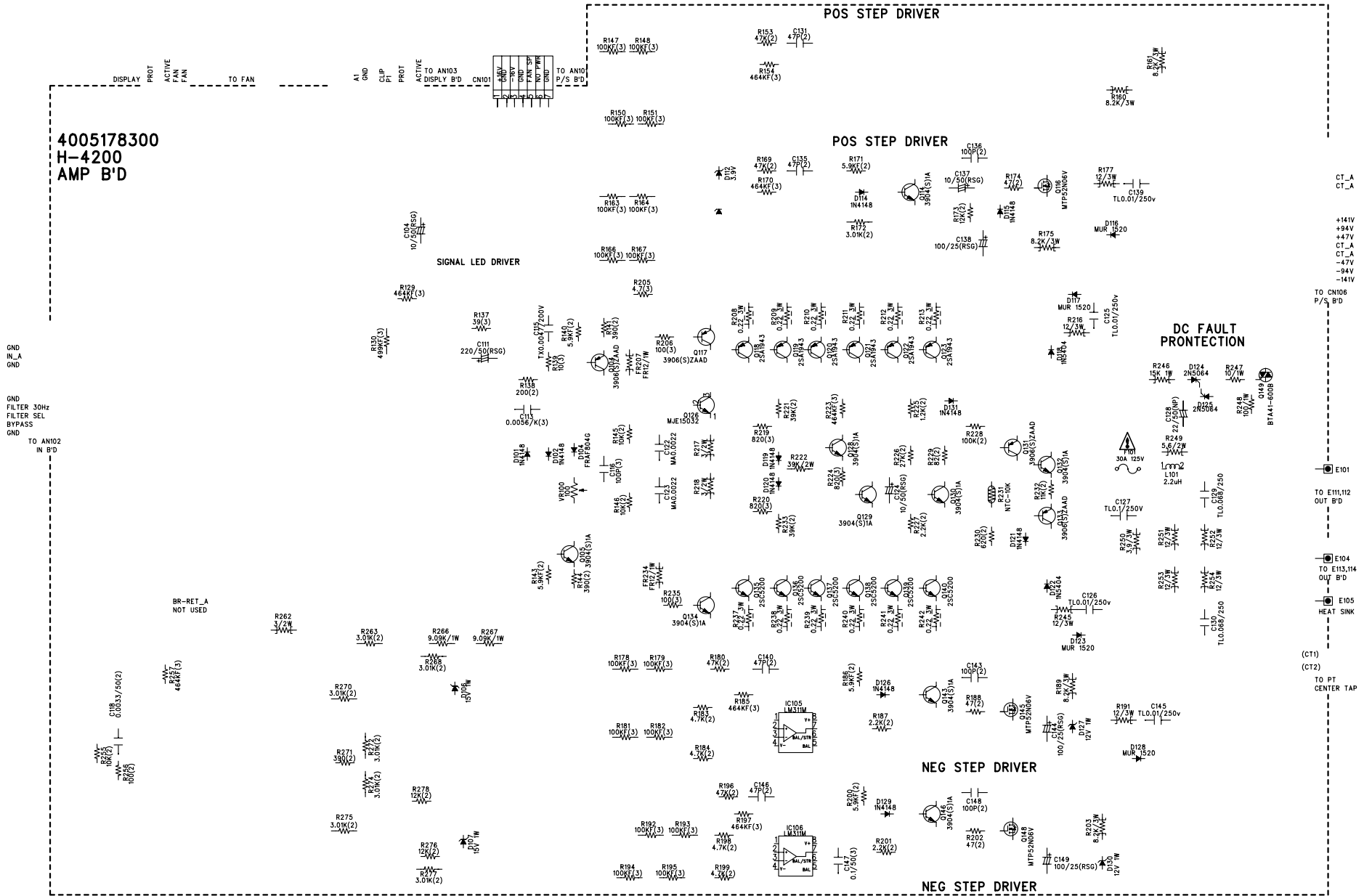
E801
E802
E803
E804
E805
E806
HEATSINK

E801
E802
E803
E804
E805
E806
HEATSINK

AC INPUT



4005178300
H-4200
AMP B'D



POS STEP DRIVER

POS STEP DRIVER

SIGNAL LED DRIVER

DC FAULT PROTECTION

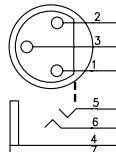
NEG STEP DRIVER

NEG STEP DRIVER

4005178200 H-4200 INPUT B'D

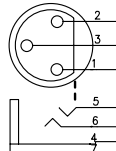
CH 1 INPUTS

JK301

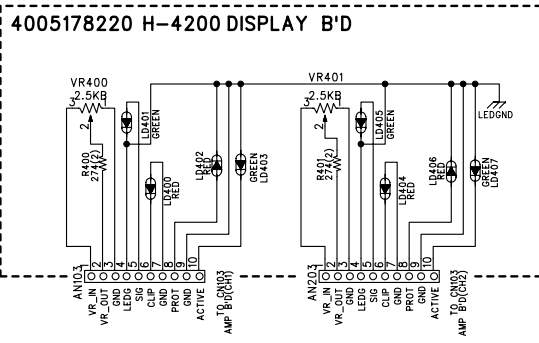
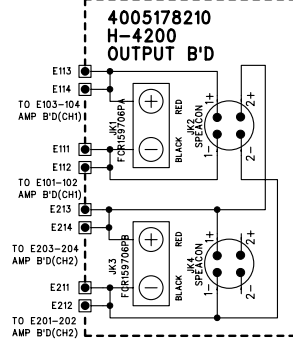
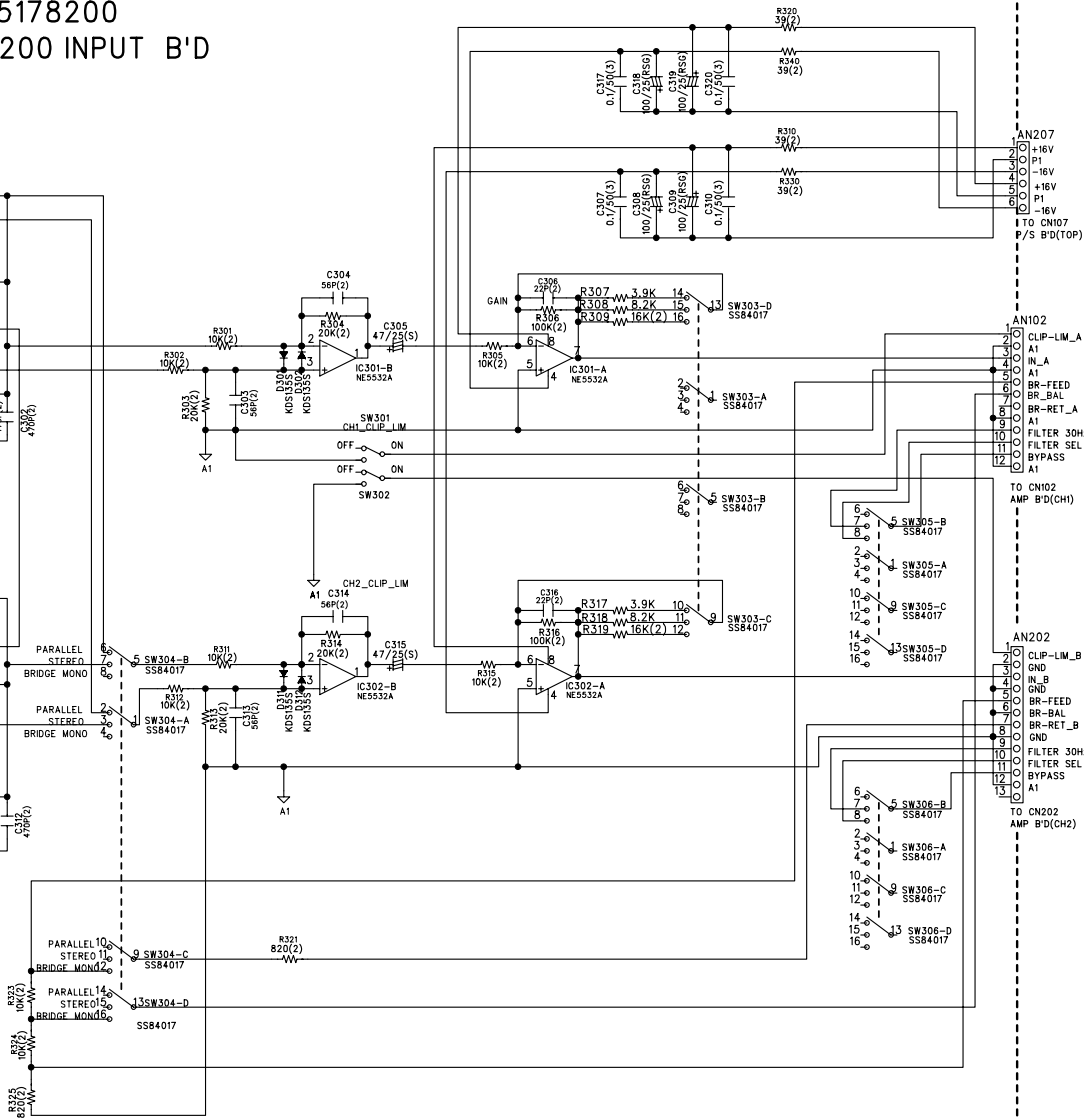
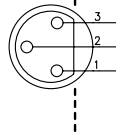


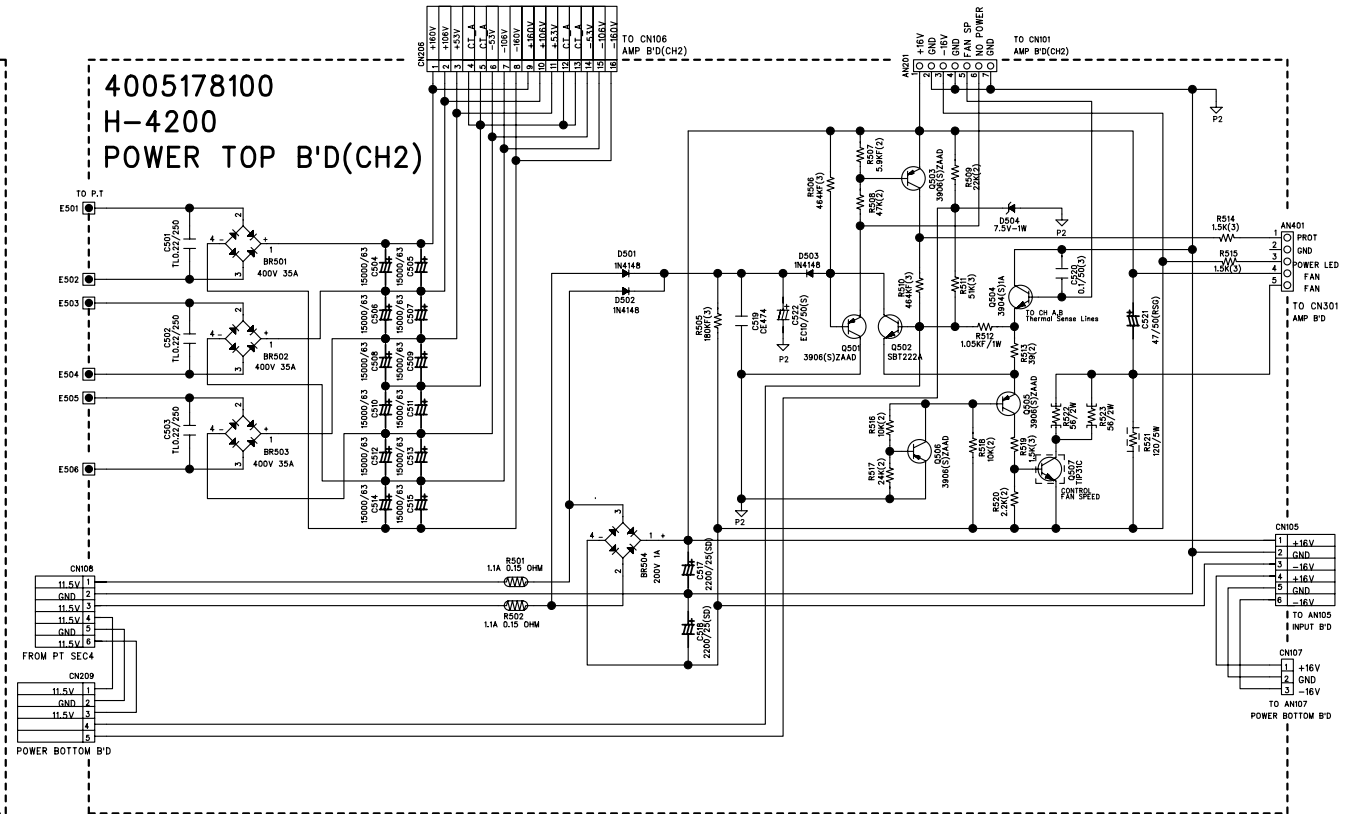
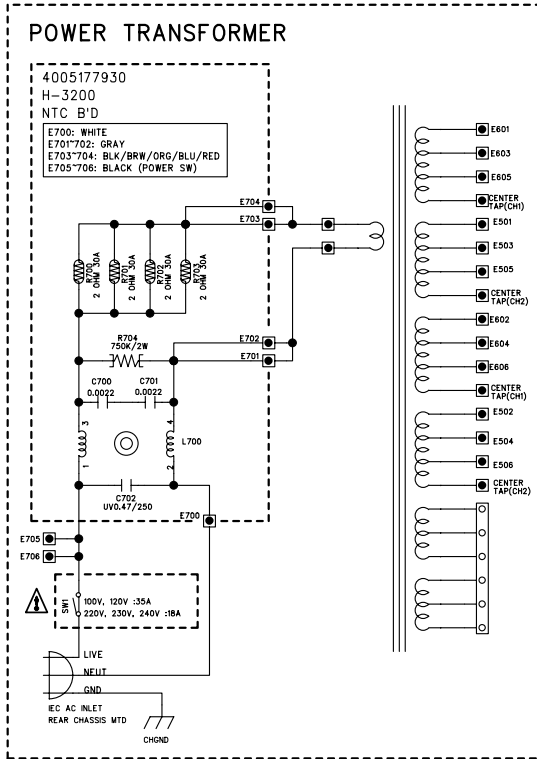
CH 2 INPUTS

JK303



JK304





4005177400
H-4200
POWER BOTTOM B'D(CH1)

