

**SERVICE**

**MANUAL**

P U B L I C A D D R E S S

**AMPLIFIER**

**PA-2000A/4000A**

**interM**

# SPECIFICATIONS

## - ELECTRICAL

Rated Output (RMS) .....	PA-2000A: 60W PA-4000A: 120W
Frequency Response .....	60Hz-20kHz
Total Harmonic Distortion(T.H.D) .....	Less than 1%
Signal to Noise Ratio (S/N).....	105dB
Graphic Equalizer (100Hz, 330Hz, 1kHz, 3.3kHz, 10kHz) .....	±12dB
Input Sensitivity/Impedance	
CH1~CH6.....	-70~-22dB/600Ω
Phono.....	-54dB/22kΩ
Link In .....	-20dB/15kΩ
Telephone In.....	-2dB/600Ω
Amp In .....	0dB/47kΩ
Speaker Output/Impedance.....	PA-2000A: 60W: 4Ω, 8Ω, 8Ω(70V), 16Ω(100V) PA-4000A: 120W: 4Ω, 8Ω, 4Ω(70V), 8Ω(100V)
Amp Out/Impedance .....	0dB/600Ω
Link Out/Impedance .....	-6dB/600Ω

## - GENERAL

Power Source .....	100-120VAC or 220-240VAC; 50/60Hz (Supplied AC mains transformer depends on country requirements)
Power Consumption .....	PA-2000A: 95W PA-4000A: 120W
Weight .....	PA-2000A: 10kg/22lb PA-4000A: 12kg/26lb
Dimensions .....	PA-2000A: 420(W)x100(H)x320(D)mm/16.5(W)x3.9(H)x12.5(D)in PA-4000A: 420(W)x133(H)x320(D)mm/16.5(W)x5.2(H)x12.5(D)in

\* Specifications and design subject to change without notice.

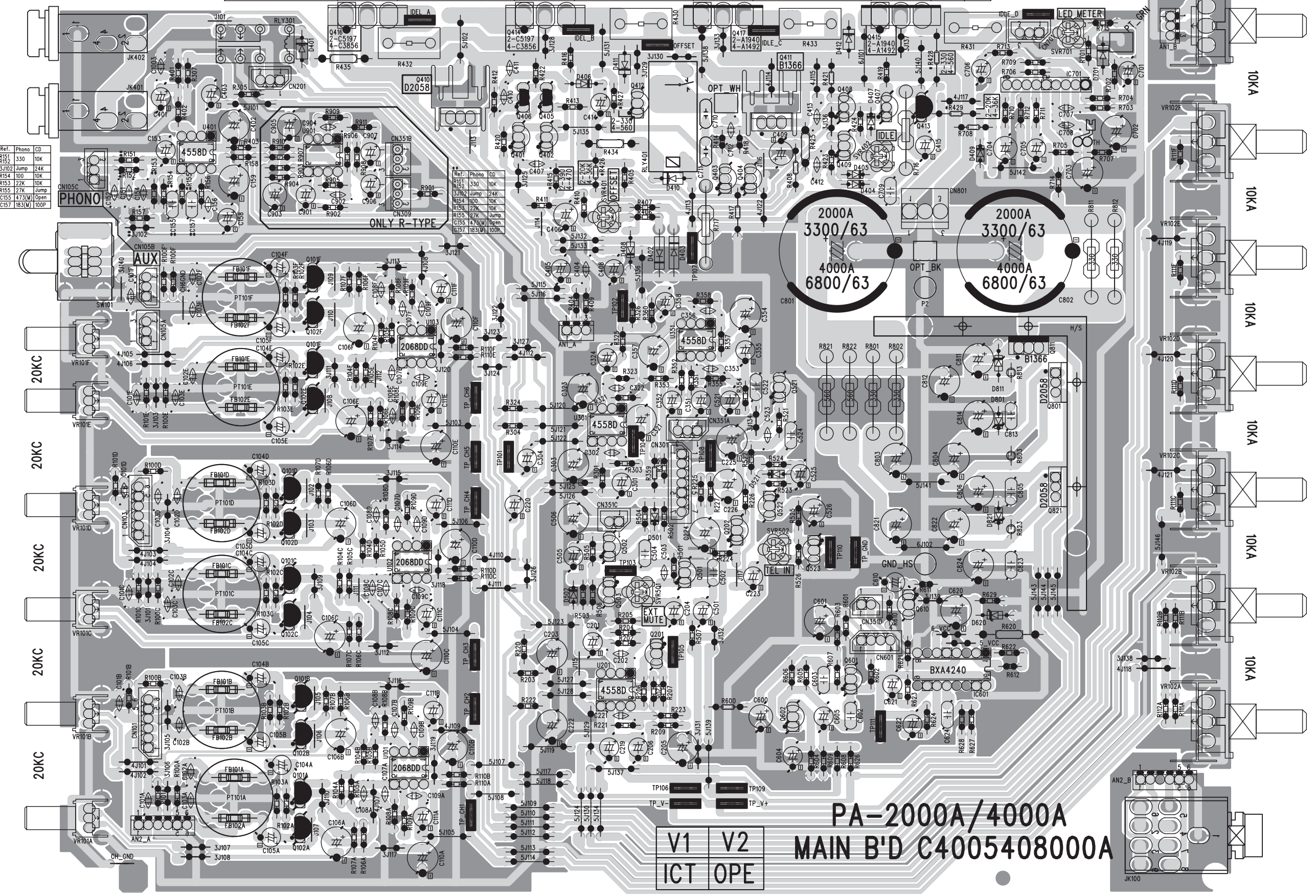
TOP AND BOTTOM VIEW OF P.C. BOARD

PA-2000A/4000A MAIN B'D C4005408000A

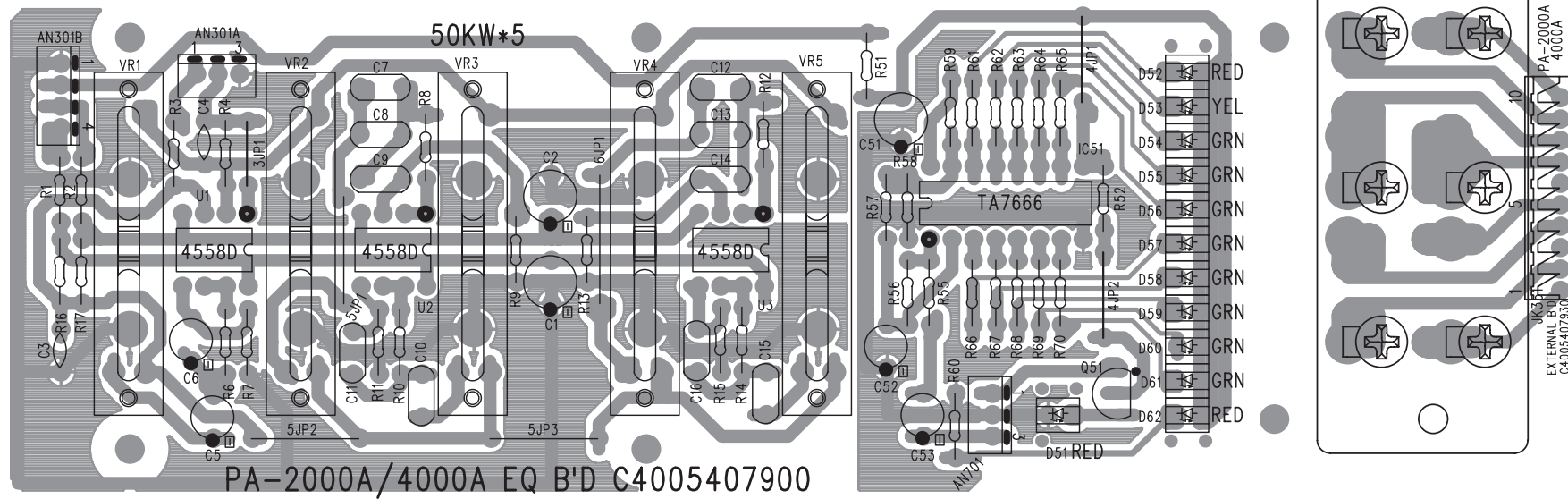
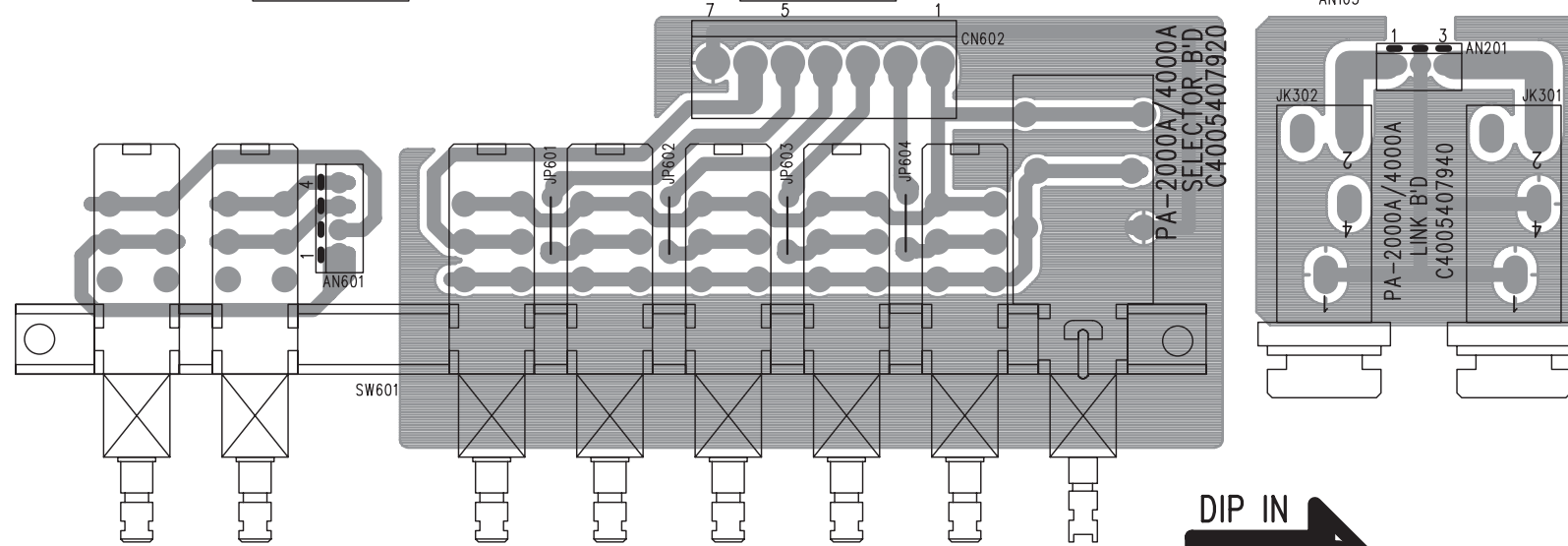
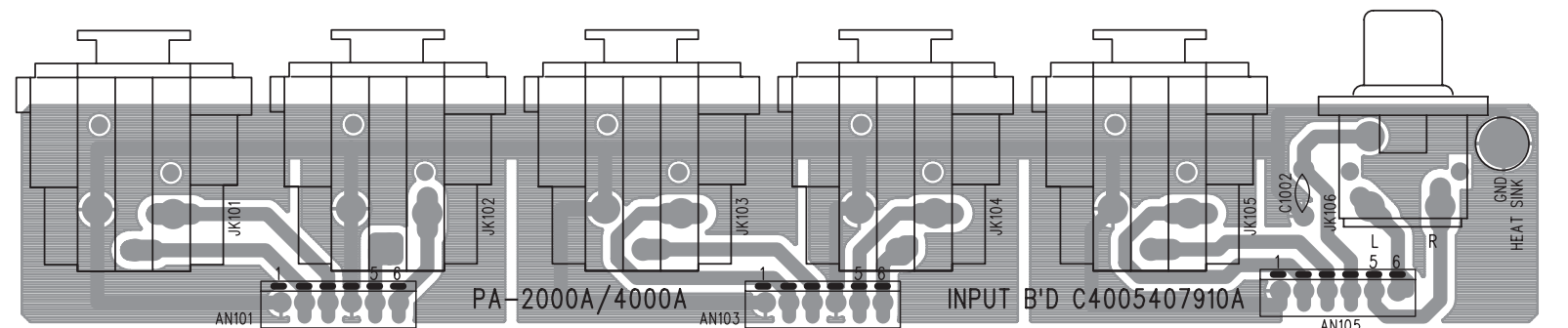
PA-2000A	Q416	R415	Q414	R426,R429	Q417	R427,R428	Q415	C801,C802
PA-4000A	C5197	390 ohm	C5197	20K ohm	A1940	330 ohm	A1940	3300/63
PA-4000A	C3856	470 ohm	C3856	36K ohm	A1492	560 ohm	A1492	6800/63

DIP IN 

Ref.	Phono	CD
R154	330	10K
J102	Jump	24K
R154	100	10K
R155	22K	10K
R155	22K	10K
C155	473(M)	Open
C157	183(M)	100P

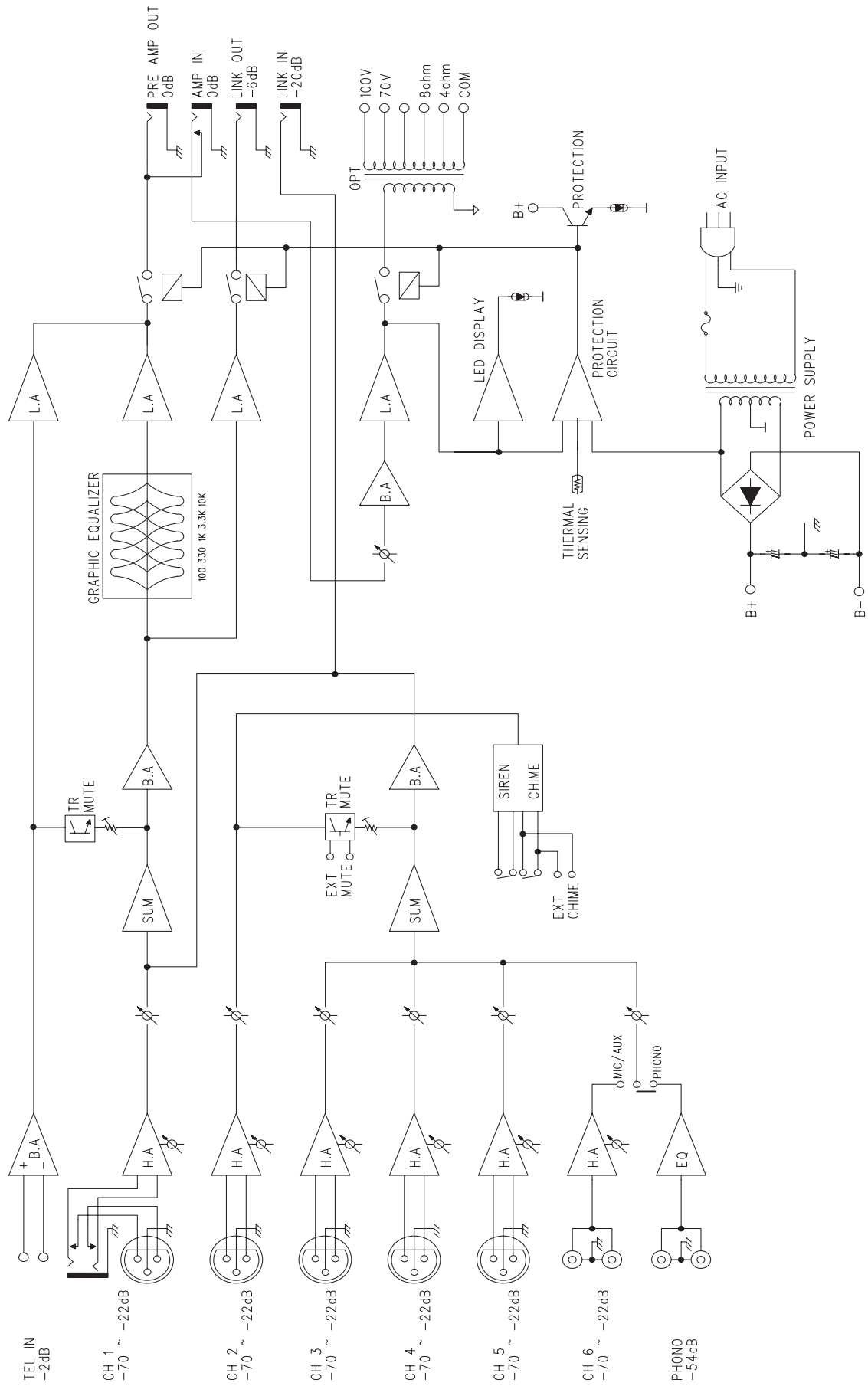


PA-2000A/4000A  
MAIN B'D C4005408000A



PA-2000A/4000A SUB EQ B'D C4005407900A

# BLOCK DIAGRAM



# SCHEMATIC DIAGRAM

