

SERVICE

MANUAL

P U B L I C A D D R E S S

AMPLIFIER

PA-2000A/4000A

interM

SPECIFICATIONS

- ELECTRICAL

Rated Output (RMS)	PA-2000A: 60W PA-4000A: 120W
Frequency Response	60Hz-20kHz
Total Harmonic Distortion(T.H.D)	Less than 1%
Signal to Noise Ratio (S/N).....	105dB
Graphic Equalizer (100Hz, 330Hz, 1kHz, 3.3kHz, 10kHz)	±12dB
Input Sensitivity/Impedance	
CH1~CH6.....	-70~-22dB/600Ω
Phono.....	-54dB/22kΩ
Link In	-20dB/15kΩ
Telephone In.....	-2dB/600Ω
Amp In	0dB/47kΩ
Speaker Output/Impedance.....	PA-2000A: 60W: 4Ω, 8Ω, 83Ω(70V), 165Ω(100V) PA-4000A: 120W: 4Ω, 8Ω, 42Ω(70V), 83Ω(100V)
Amp Out/Impedance	0dB/600Ω
Link Out/Impedance	-6dB/600Ω

- GENERAL

Power Source	100-120VAC or 220-240VAC; 50/60Hz (Supplied AC mains transformer depends on country requirements)
Power Consumption	PA-2000A: 95W PA-4000A: 120W
Weight	PA-2000A: 10kg/22lb PA-4000A: 12kg/26lb
Dimensions	PA-2000A: 420(W)x100(H)x320(D)mm/16.5(W)x3.9(H)x12.5(D)in PA-4000A: 420(W)x133(H)x320(D)mm/16.5(W)x5.2(H)x12.5(D)in

* Specifications and design subject to change without notice.

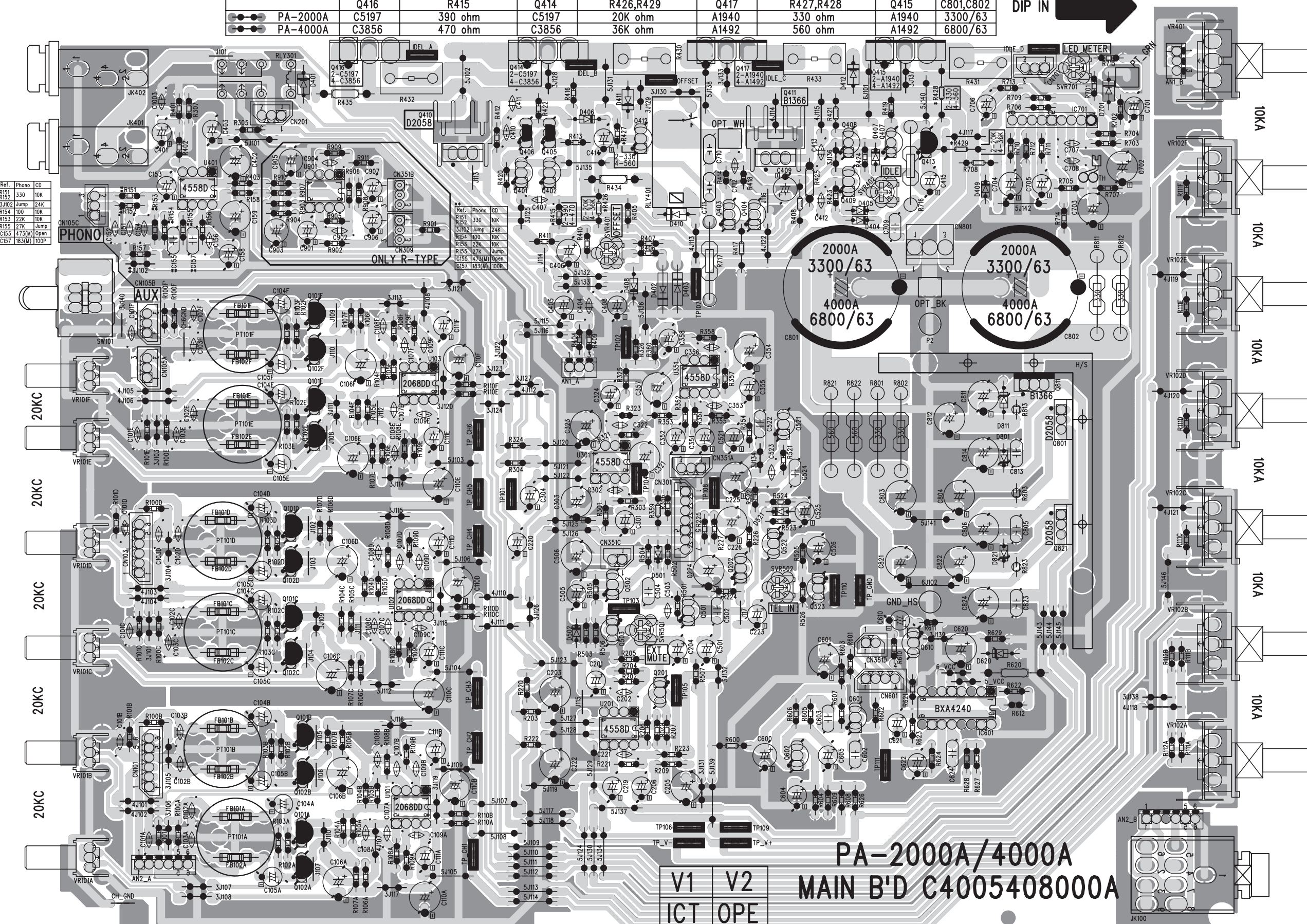
TOP AND BOTTOM VIEW OF P.C. BOARD

PA-2000A/4000A MAIN B'D C4005408000A

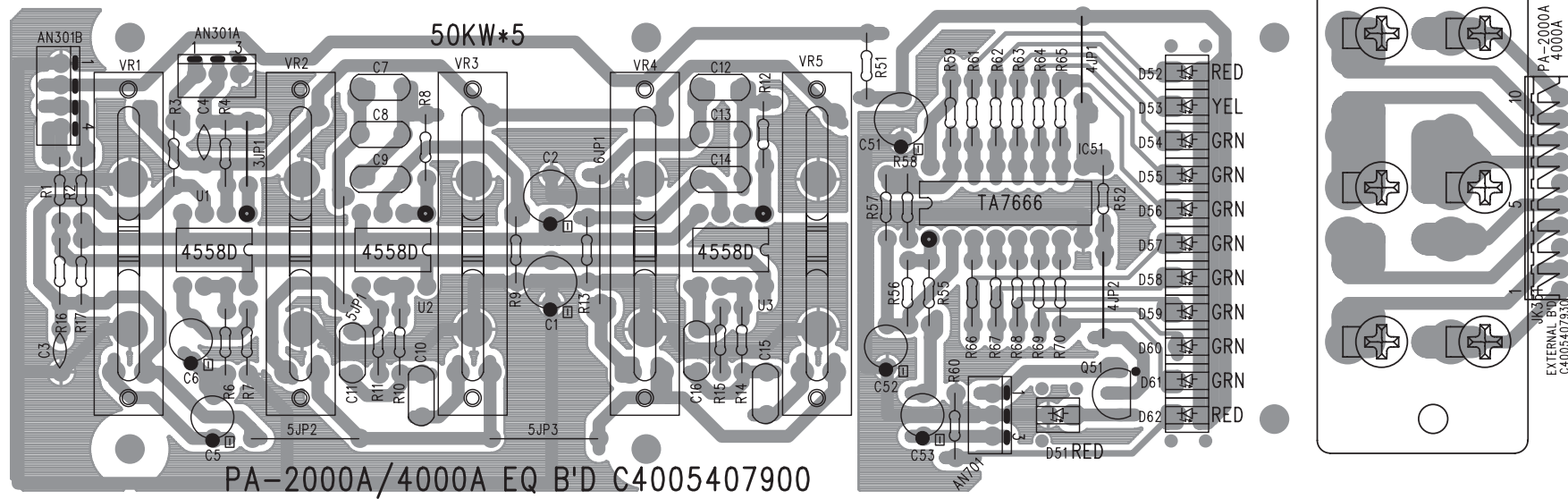
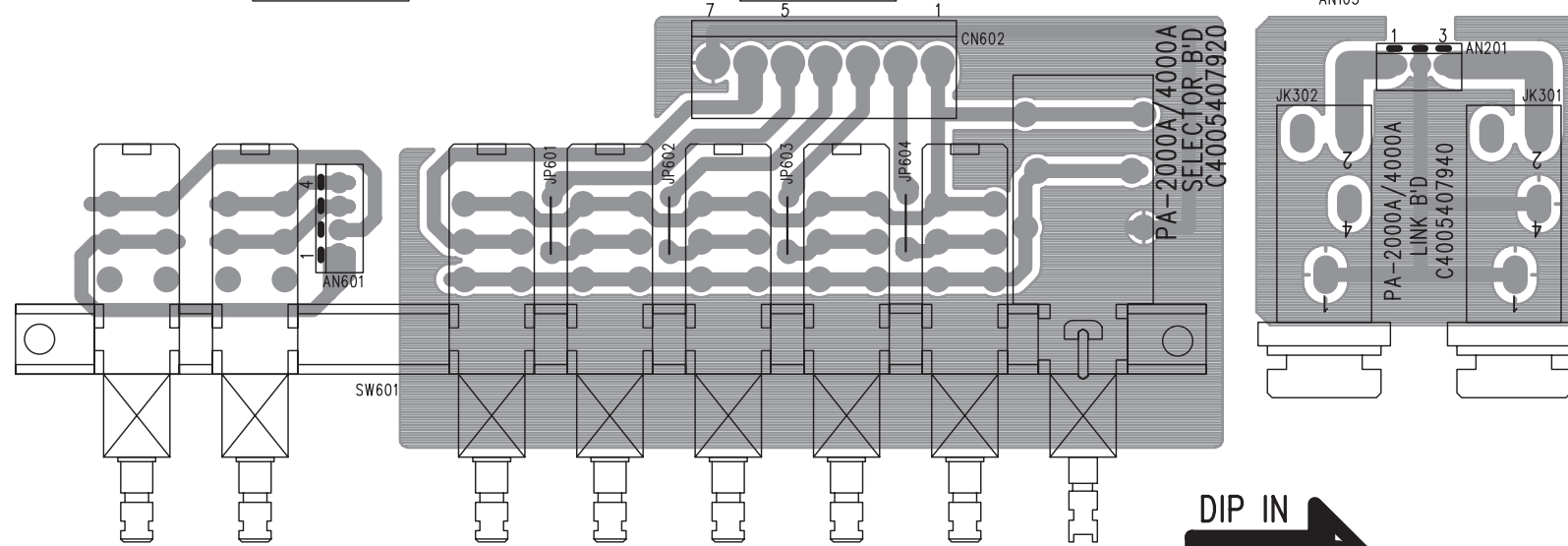
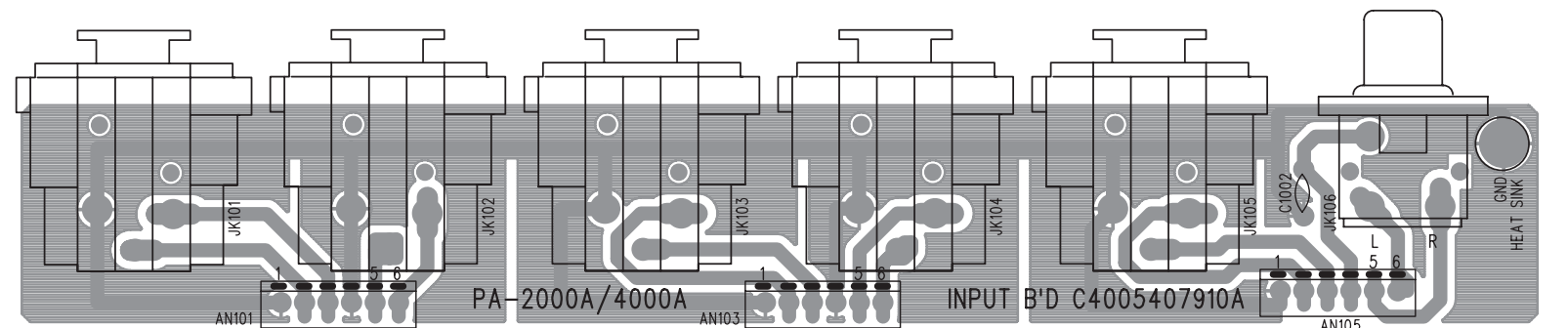
●●● PA-2000A	Q416	R415	Q414	R426,R429	Q417	R427,R428	Q415	C801,C802
●●● PA-4000A	C5197	390 ohm	C5197	20K ohm	A1940	330 ohm	A1940	3300/63
	C3856	470 ohm	C3856	36K ohm	A1492	560 ohm	A1492	6800/63

DIP IN 

Ref.	Phono	CD
R154	330	10K
J102	Jump	24K
R154	100	10K
R155	22K	10K
R155	22K	10K
C155	473(M)	Open
C157	183(M)	100P



V1 V2
ICT OPE
PA-2000A/4000A
MAIN B'D C4005408000A



PA-2000A/4000A SUB EQ B'D C4005407900A

BLOCK DIAGRAM

