

SERVICE

MANUAL

PUBLIC ADDRESS POWER

AMPLIFIER

PA-9336

interM

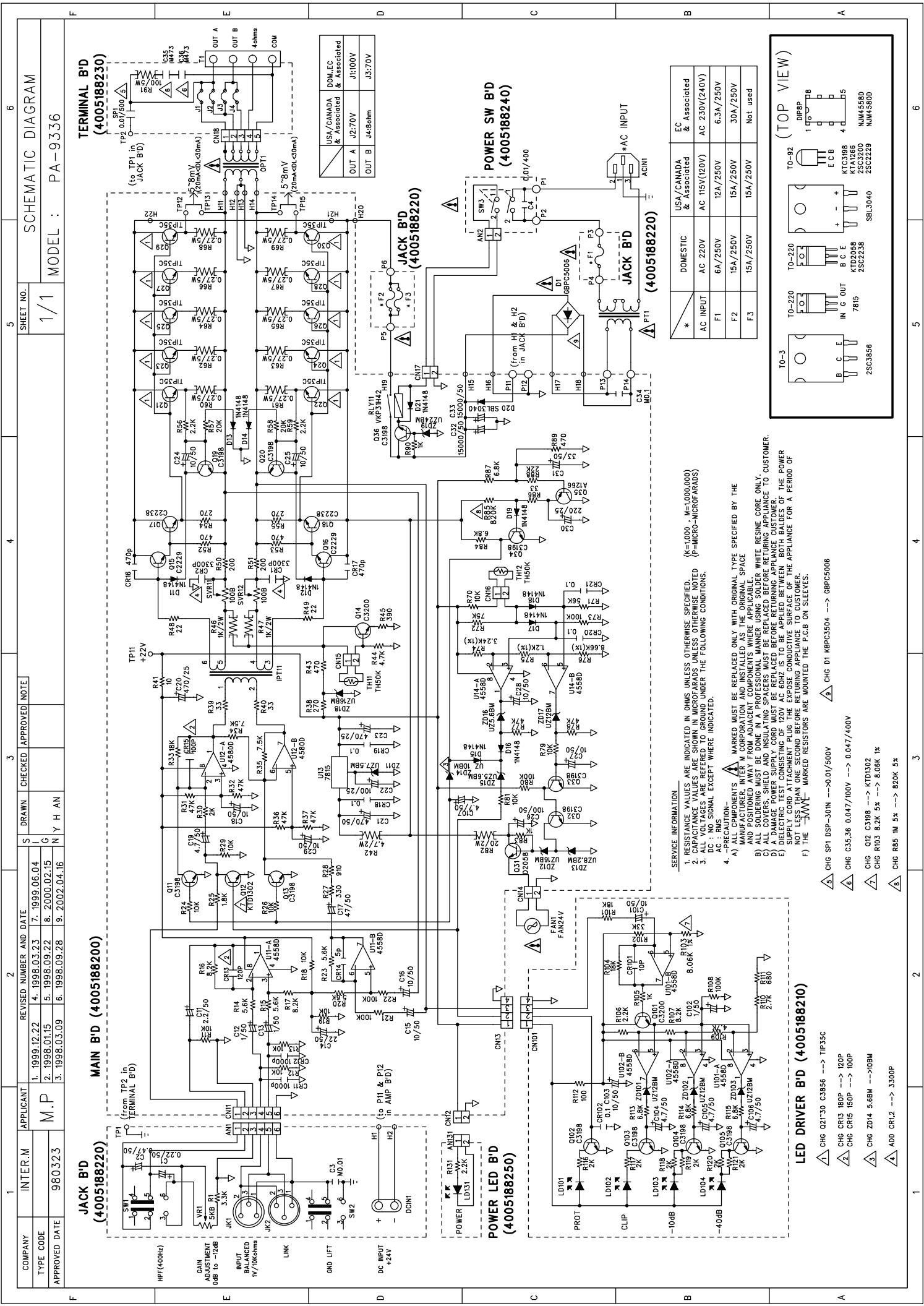
ELECTRICAL PARTS LIST

Ref No.	Part No.	Description	Value
MAIN B'D (4005188200)			
Q11 Q13 Q19-20	2008606104-T	TR NPN KTC 3198Y	C3198
Q12	2008606104-T	TR NPN KTC 3198Y	KTD1302
Q35	2008606105-T	TR PNP KTA 1266Y	A1266
Q15-16	2008606107-T	TR NPN KTC 2229Y (KTC 3206Y)	C2229
Q14	2008606108-T	TR NPN KTC2240BL (KTC 3200BL)	C3200
Q31	2028406113	TR NPN KTC 3198Y	D2058
Q17-18	2028407118	TR NPN 2SC 2238Y	C2238
Q21-30	2028427998	TR 2SC 3856/WACC	TIP35C
D20	2058300997	DIODE SCHOTTKY SBL-3040PT	SBL3040
D11-19 D21	2058304100	DIODE 1N4148	1N4148
ZD11	2058501076	DIODE ZENER UZ-7.5BM	UZ7.5BM
ZD15-16	2058502056	DIODE ZENER UZ-5.6BM (5.4,5.8)	UZ5.6BM
ZD13	2058502082	DIODE ZENER 8.2BM (7.9,8.5)	UZ8.2BM
ZD17	2058502120	DIODE ZENER UZ-12BM(11.6,12.4)	UZ12BM
ZD12 ZD18	2058502160	DIODE ZENER UZ-16BM (15.6,16.9)	UZ16BM
ZD19	2058502240	DIODE ZENER UZ-24BM (23.1,25.5)	UZ24BM
U11 U14	2118010590	IC NJM4558D JRC	4558D
U12	2118010932	IC NJM 4556D	4580D
U13	2128610900	IC KA7815 COMMON	7815
TH11-12	2438209031	THERMISTOR YSG-503J L=100	TH50K
IPT11	2808098300	TRANSFORMER INPUT (PA-9324)	IPT
OPT1	2818088900	TRANSFORMER OUTPUT PA-9336	OUTPUT TRANS
R75	3003120953	RES CF 1.2K 1/5W F N	1.2K(1%)
R74	3003324953	RES CF 3.24K 1/5W F N	3.24K(1%)
R76	3003866953	RES CF 8.66K 1/5W F N	8.66K(1%)
R41	3009100973	RES CF 10 1/5W J N	10
R83 R90	3009102973	RES CF 1K 1/5W J N	1K
R11-13 R18-19 R24	3009103973	RES CF 10K 1/5W J N	10K
R26 R29 R70 R79 R81			
R21-22 R73 R80	3009104973	RES CF 100K 1/5W J N	100K
R85	3009105973	RES CF 1M 1/5W J N	820K
R25	3009182973	RES CF 1.8K 1/5W J N	1.8K
R33	3009183973	RES CF 18K 1/5W J N	18K
R50-51	3009201973	RES CF 200 1/5W J N	200
R30	3009202973	RES CF 2K 1/5W J N	2K
R57-58	3009203973	RES CF 20K 1/5W J N	20K
R48-49	3009220973	RES CF 22 1/5W J N	22
R56 R59	3009222973	RES CF 2.2K 1/5W J N	2.2K
R88	3009223973	RES CF 22K 1/5W J N	22K
R38 R54-55	3009271973	RES CF 270 1/5W J N	270

R39-40 R86	3009330973	RES CF 33 1/5W J N	33
R27	3009331973	RES CF 330 1/5W J N	330
R45	3009391973	RES CF 390 1/5W J N	390
R43 R52-53 R89	3009471973	RES CF 470 1/5W J N	470
R44	3009472973	RES CF 4.7K 1/5W J N	4.7K
R31-32 R36-37	3009473973	RES CF 47K 1/5W J N	47K
R77-78			
R20 R23	3009562973	RES CF 5.6K 1/5W J N	5.6K
R71	3009563973	RES CF 56K 1/5W J N	56K
R14-15	3009569973	RES CF 5.6K 1/5W J N	5.6K
R84 R87	3009682973	RES CF 6.8K 1/5W J N	6.8K
R34-35	3009752973	RES CF 7.5K 1/5W J N	7.5K
R72	3009753973	RES CF 75K 1/5W J N	75K
R17	3009822973	RES CF 8.2K 1/5W J N	8.2K
R16	3009829973	RES CF 8.2K 1/5W J N	8.2K
R28	3009911973	RES CF 910 1/5W J N	910
R46-47	3039102572-F	RES MO 1K 2W J N	1K/2W
R82	3039200572-F	RES MO 20 2W J N	20/2W
R42	3039479572-F	RES MO 4.7 2W J N	4.7/2W
R60-69	3059278783	RES CE 0.27 5W J T	0.27/5W
SVR11-12	3248310120	RES SEMI CS 100B 10/5	100B
C20 C23	3408247149	CAP AF SG 470UF 25V	470/25
C21	3408247171	CAP RSA 470UF 50V SNAP 13P	470/50
C15-16 C18 C24-25	3409210071-T	CAP AF RSG 10UF 50V 5P	10/50
C27-29			
C22	3409210141-T	CAP AF RSG 100UF 25V 6P	100/25
C26	3409210171-T	CAP AF RSG 100UF 50V 8P	100/50
C12-13	3409210971-T	CAP AF RSG 1UF 50V 5P	1/50
C14	3409222071-T	CAP AF RSG 22UF 50V 5P	22/50
C30	3409222141-T	CAP AF RSG 220UF 25V J 8P	220/25
C11	3409222971-T	CAP AF RSG 2.2UF 50V 5P	2.2/50
C31	3409233071-T	CAP AF RSG 33UF 50V 6P	33/50
C17	3409247071-T	CAP AF RSG 47UF 50V 6P	47/50
C19 C107	3409247971-T	CAP AF RSG 4.7UF 50V 5P	4.7/50
C32-33	3419515379	CAP E LPW 15000UF 50V JAMICON	15000/50
CR15	3509151231-A	CAP CE B 150PF 50V K AXIAL	100P
CR13	3509181231-A	CAP CE B 180PF 50V K AXIAL	120P
CR16-17	3509471231-A	CAP CE B 470PF 50V K AXIAL	470p
CR14	3529050311-A	CAP CE SL 5P 50V M AXIAL	5p
CR11-12	3539102231-A	CAP CE YP 1000PF 50V K AXIAL	1000p
CR18-21	3539104531-A	CAP CE YF 100000PF 50V Z AXIAL	0.1
C34	3609104122-T	CAP MA 0.1UF 100V J SMALL	M0.1
CN12	4428595002	5267-02A/2.5MM/MH5264	CON WAF 2P
CN14-17	4428595002	5267-02A/2.5MM/MH5264	CON WAF 2P

CN13	4428598304	WAFER LW-0640-4P	CON WAF 4P
CN11	4428598306	CONNECTOR WAFER LW-0640-6P	CON WAF 6P
P11-12	4465998210	TERMINAL (250) PCB TAB	250 TAP
P13-14	4465998210	TERMINAL (250) PCB TAB	250 TAP
TP11-15	4678699410	CNT PLUG 1P	CNT1P
RLY11	5528009810	RELAY VKP-31H42	VKP31H42
FAN1	7308998310	FAN (F9225M24B)	FAN24V
LED DRIVER B'D (4005188210)			
Q102-105	2008606104-T	TR NPN KTC 3198Y	C3198
Q101	2008606108-T	TR NPN KTC2240BL (KTC 3200BL)	C3200
ZD101-103	2058502120	DIODE ZENER UZ-12BM(11.6,12.4)	UZ12BM
U101-102	2118010590	IC NJM4558D JRC	4558D
LD101-102	2308257222-T	SLR 54URF 20	LED RED2
LD103-104	2308257262-T	SLR 54GGF 20	LED GREEN
R112	3009101973	RES CF 100 1/5W J N	100
R105	3009102973	RES CF 1K 1/5W J N	1K
R108	3009104973	RES CF 100K 1/5W J N	100K
R101 R104	3009183973	RES CF 18K 1/5W J N	18K
R116-121	3009202973	RES CF 2K 1/5W J N	2K
R106	3009222973	RES CF 2.2K 1/5W J N	2.2K
R110	3009272973	RES CF 2.7K 1/5W J N	2.7K
R102	3009333973	RES CF 33K 1/5W J N	33K
R109	3009472973	RES CF 4.7K 1/5W J N	4.7K
R111	3009681973	RES CF 680 1/5W J N	680
R113-115	3009682973	RES CF 6.8K 1/5W J N	6.8K
R103	3009822973	RES CF 8.2K 1/5W J N	8.06K 1%
R107	3009822973	RES CF 8.2K 1/5W J N	8.2K
C101 C103	3409210071-T	CAP AF RSG 10UF 50V 5P	10/50
C102	3409210971-T	CAP AF RSG 1UF 50V 5P	1/50
C104-106	3409247971-T	CAP AF RSG 4.7UF 50V 5P	4.7/50
CR101	3529100311-A	CAP CE SL 10PF 50V J AXIAL	10P
CR102	3539104531-A	CAP CE YF 100000PF 50V Z AXIAL	0.1
CN101	4428598704	CONNECTOR WAFER LW-0640-4P	CON WAF 4P
JACK B'D (4005188220)			
R1	3009332973	RES CF 3.3K 1/5W J N	3.3K
VR1	3228078510	VR RK09K1110203 52B (ROM81)	5KB
C1	3409222871-T	CAP AF RSG 0.22UF 50V 5P	0.22/50
C2	3409247871-T	CAP AF RSG 0.47UF 50V 5P	0.47/50
C3	3609103120-T	CAP MA 0.01UF 100V	M0.01
AN1	4355818411	CON ASS'Y 6P	ASS'Y 6P
JK2	4408194610	XLR JACK (M) (E403A0090N)	E403A0090N
DCIN1	4438094610	DC TERMINAL 2P	TERMINAL/DC
JK1	4438193710	XLR JACK(F) 3P(E303A0070N)	E303A0070N
SW1-2	4618001110	SW SLIDE SSP322SB011(SSH78)	SLIDE SW

TP1	4678699411	CNT PLUG 1P	CNT PLUG 1P
P5-6	4465998210	TERMINAL (250) PCB TAB	250 TAP
F2-3	5508424230	FUSE TS 31.8MM 15A/250V KS	15A/250V
TERMIANL B'D (4005188230)			
J1-4		JUMPER	
C35-36		CAP MA 0.047UF 400V	M473
OPT1	2818088900	TRANSFORMER OUTPUT PA-9336	OUTPUT TRANS
R91	3059101776	RES WWCE 100 5W J T	100/5W
CN18	4355923805	WAFER LW(3.96) 5P JIS	CON WAF 5P
T1	4465997704	SCREW TRERMINAL 4P	TRERMINAL 4P
TP2	4678699411	CNT PLUG 1P	CNT PLUG 1P
SP1	5410000300	SURGE PROTECTOR DSP-301N	0.01/500
POWER SW B'D (4005188240)			
C4	3549103107	CAP CE DE7150F 223MVAI	0.01/400
AN2	4355818817	CON ASS'Y 2P	CON ASS'Y 2P
SW3	4648099010	POWER SWITCH ESB-998	ESB-998
POWER LED B'D (4005188250)			
LD131	2308252222-T	SLR-54URA 49	LED RED1
R131	3009222973	RES CF 2.2K 1/5W J N	2.2K
AN131	4353986914	CON ASS'Y 2P	CON ASS'Y 2P



USA/CANADA & Associated	DOM. EC	JAPAN
OUT A	J2:70V	J1:100V
OUT B	J4:8ohm	J3:70V

DOMESTIC	USA/CANADA & Associated	EC Associated
AC INPUT	AC 220V	AC 230V(240V)
F1	6A/250V	12A/250V
F2	15A/250V	15A/250V
F3	15A/250V	15A/250V
		Not used

SERVICE INFORMATION

- RESISTANCE VALUES ARE INDICATED IN OHMS UNLESS OTHERWISE SPECIFIED. (K=1,000, M=1,000,000)
- CAPACITANCE VALUES ARE SHOWN IN MICROFARADS UNLESS OTHERWISE NOTED (P=PICTO-FARADS)
- ALL VOLTAGES ARE REFERRED TO GROUND UNDER THE FOLLOWING CONDITIONS.
 - DC : NO SIGNAL EXCEPT WHERE INDICATED.
 - AC : ALL COMPONENTS MARKED WITH ORIGINAL TYPE SPECIFIED BY THE MANUFACTURER, INTER-M CORPORATION AND INSTALLED AS THE ORIGINAL SPACE AND POSITIONED AWAY FROM ADJACENT COMPONENTS WHERE APPLICABLE.
 - ALL SOLDERING MUST BE DONE USING LEAD-FREE SOLDER. WHITE REFINE CORE ONLY.
 - ALL COILS SHOULD BE DESIGNED TO BE REPLACED BEFORE RETURNING APPLIANCE TO CUSTOMER.
 - A DAMAGE POWER SUPPLY CORD MUST BE REPLACED BEFORE RETURNING APPLIANCE TO CUSTOMER.
 - DIELECTRIC TEST CONSISTING OF 120V AC 60HZ IS TO BE APPLIED BETWEEN BOTH BALDES OF THE POWER SUPPLY CORD ATTACHMENT PLUG THE EXPOSE CONDUCTIVE SURFACE OF THE APPLIANCE FOR A PERIOD OF NOT LESS THAN ONE SECOND BEFORE RETURNING APPLIANCE TO CUSTOMER.
 - THE Δ MARKED RESISTORS ARE MOUNTED THE P1.5 ON SOLDER.

Δ CHG SPT DSP-30IN -->X0.01/500V
 Δ CHG C35.36 0.047/100V --> 0.047/400V
 Δ CHG Q12 C3198 --> KTD1302
 Δ CHG R103 8.2K 5% --> 8.06K 1%
 Δ CHG R85 1M 5% --> 820K 5%
 Δ ADD CR12.2 --> 3300P
 Δ CHG Q21*30 C3956 --> TIP35C
 Δ CHG CR13 180P --> 120P
 Δ CHG CR15 150P --> 100P
 Δ CHG ZD14 5.6BM -->X10BM
 Δ CHG CR12.2 --> 3300P

interM

www.inter-m.com
MADE IN KOREA
2003.6