

# SERVICE MANUAL

---

## AV SYSTEM



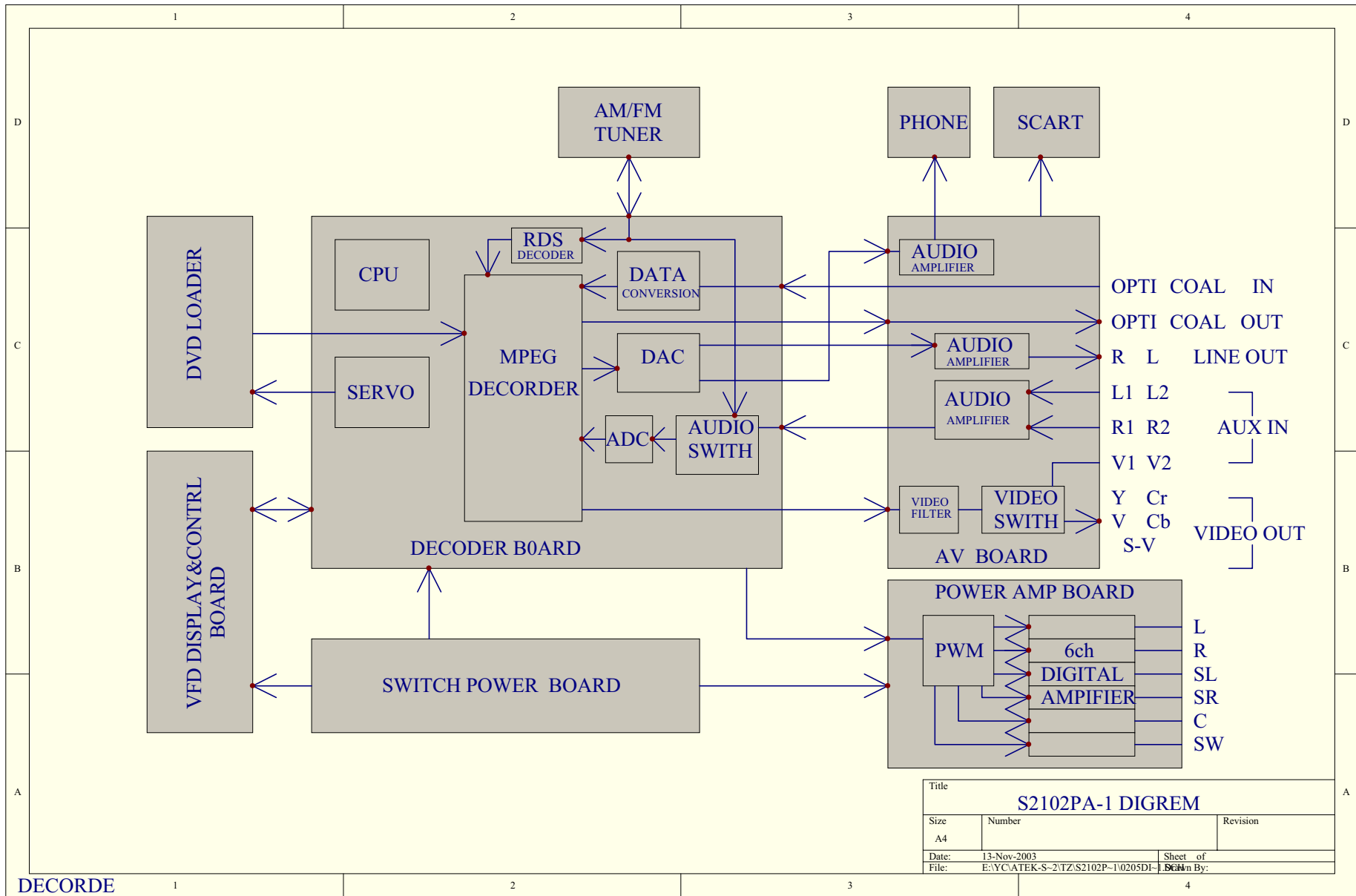
MODEL



S2102PA-1/10W

### CONTENTS

UNIT CIRCUIT BLOCK DIAGRAM	2
SWITCHING POWER SUPPLY	3-7
MPEG BOARD	8-24
AV BOARD	25-31
AMPLIFIER BOARD	32-41
PARTS OF OPERATION DISPLAY	42-46
OTHER CIRCUIT	47-54
CABINET EXPLODED VIEW	55
CABINET EXPLODED VIEW PARTS LIST	56-57

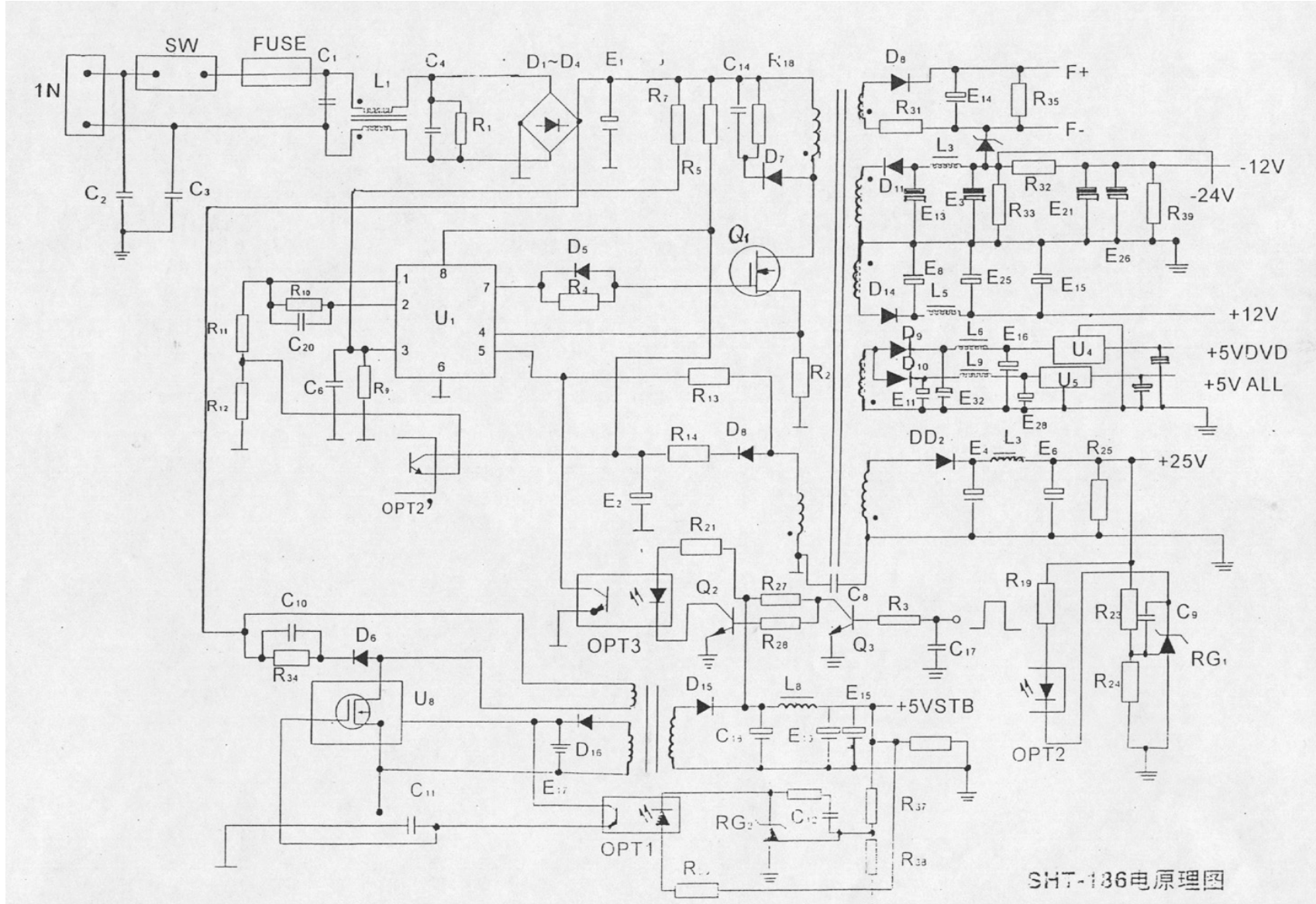


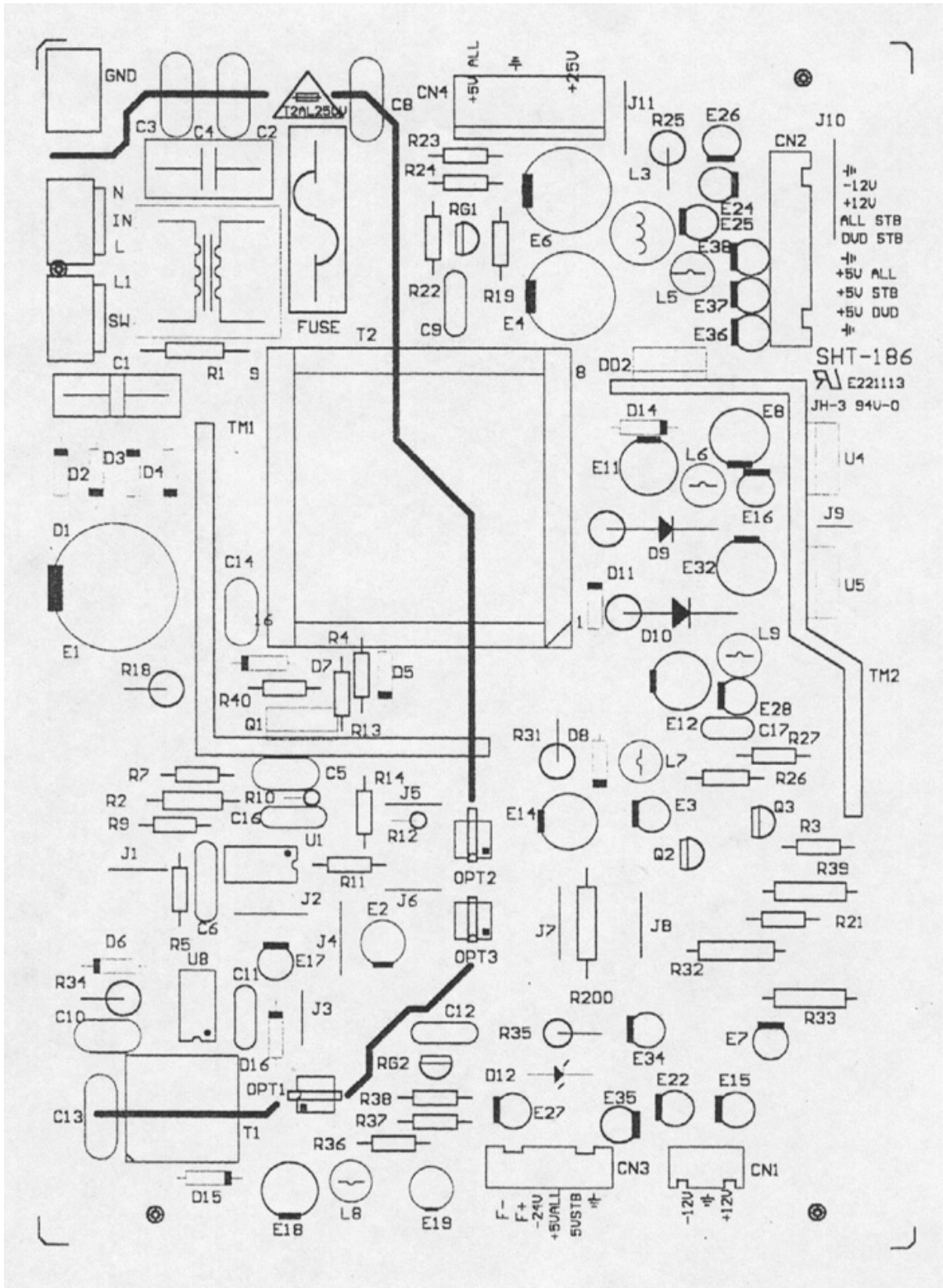
Title		
<b>S2102PA-1 DIGREM</b>		
Size	Number	Revision
A4		
Date:	13-Nov-2003	Sheet of
File:	E:\YCA\ATEK-S-2\TZ\S2102P-1\0205DI-1	Drawn By:

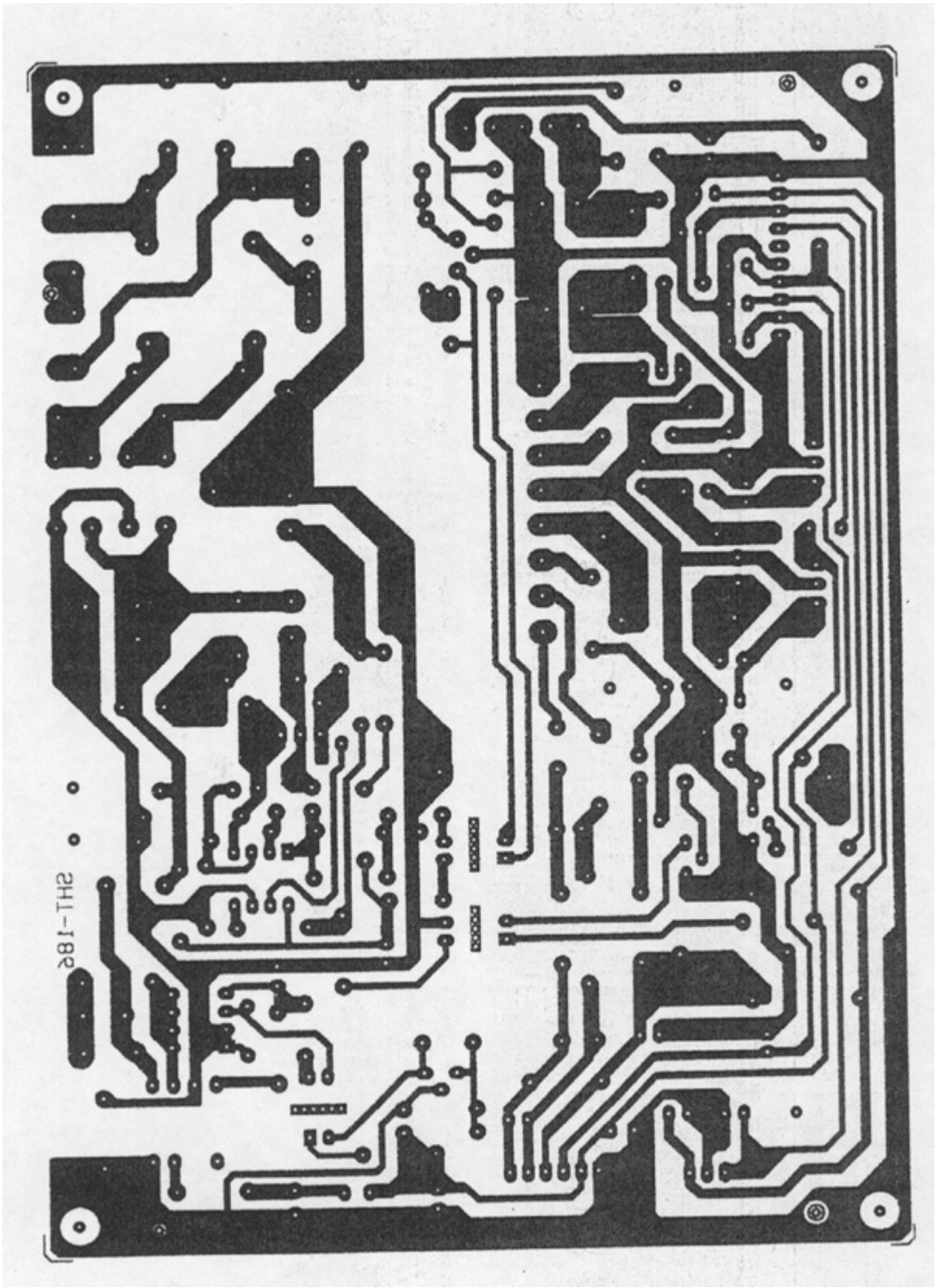
## PARTS LIST OF POWER BOARD

Item	Description	Soecification	Qun	Location
1	IC	L6565	1	U1
2	IC	VIPER 12A	1	U8
3	IC	TL431	2	RG1,2
4	IC	KA7805	2	U4,U5
5	OPT	PC817	3	OPT1,2,3
6	Mosfet	P7N60	1	Q1
7	Diode	RL207	4	D1,2,3,4
8		UF4007	7	D5,6,7,8,11,14,16
9		1N5822	2	D9,10
10		1N5819	1	D15
11	Manostat	5V6/0.5W	1	D12
12	HI-sp-recoder	HER1620G	1	DD1
13	Transistor	9013	2	Q2,3
14		221/250V	2	C3,4
15		104/275V	1	C1
16		224/275V	1	C2
17		102/1KV	2	C10,14
18		222/250V	1	C8
19	Roly-capacitor	CL11-63V--473	1	C11
20		--104	1	C6
21		--103	1	C16
22		CBB-63V-224	2	C9,12
23	Cere-capacitor	--104	1	C17
24	Electrolytor	CD263-400V/68	2	E1,10
25		CD110-35V/47	4	E2,3,17,34
26		-35V/1000	2	E4,6
27		-35V/220	1	E12
28		-16V/470	1	E8
29		-10V/470	4	E11,32,14,19
30		-10V/220	5	E7,16,26,27,28
31		-10V/1000	1	E18
32		-16V/10	4	E15,22,24,25
33	Power Trans	EE-42/PC40/16P	1	TF1
34		EE-16/PC40/8P	1	TF2
35	Line Filter	EE25/33mH	1	L1
36		6*20/4A 3uH	1	L3
37		6*8.3/ 10uH	5	L5,6,7,8,9
38		NTC5D-11	1	RT
39	Resistor	RT14-2W-560	1	R25
40		-2W-100K	1	R18









## PARTS LIST OF MPEG BOARD

Pef.NO.	PACKAGE.	Description code		
<b>Resist</b>				
R61		RC-03-0 $\Omega \pm 5\%$	R96	RC-03-100 $\Omega \pm 5\%$
R62		RC-03-0 $\Omega \pm 5\%$	R97	RC-03-100 $\Omega \pm 5\%$
R76		RC-03-0 $\Omega \pm 5\%$	R98	RC-03-100 $\Omega \pm 5\%$
R117		RC-03-0 $\Omega \pm 5\%$	R95	RC-03-100 $\Omega \pm 5\%$
R127		RC-03-0 $\Omega \pm 5\%$	R107	RC-03-100 $\Omega \pm 5\%$
R128		RC-03-0 $\Omega \pm 5\%$	R90	RC-03-150 $\Omega \pm 5\%$
R129		RC-03-0 $\Omega \pm 5\%$	R93	RC-03-150 $\Omega \pm 5\%$
R133		RC-03-0 $\Omega \pm 5\%$	R105	RC-03-160 $\Omega \pm 1\%$
R134		RC-03-0 $\Omega \pm 5\%$	R106	RC-03-160 $\Omega \pm 1\%$
R37		RC-03-1 $\Omega \pm 5\%$	R108	RC-03-160 $\Omega \pm 1\%$
R38		RC-03-1 $\Omega \pm 5\%$	R110	RC-03-160 $\Omega \pm 1\%$
R39		RC-03-1 $\Omega \pm 5\%$	R112	RC-03-160 $\Omega \pm 1\%$
R40		RC-03-1 $\Omega \pm 5\%$	R12	RC-03-220 $\Omega \pm 5\%$
R52		RC-03-1 $\Omega \pm 5\%$	R13	RC-03-220 $\Omega \pm 5\%$
R57		RC-03-4.7 $\Omega \pm 5\%$	R19	RC-03-220 $\Omega \pm 5\%$
R65		RC-03-4.7 $\Omega \pm 5\%$	R20	RC-03-220 $\Omega \pm 5\%$
R66		RC-03-4.7 $\Omega \pm 5\%$	R21	RC-03-220 $\Omega \pm 5\%$
R69		RC-03-4.7 $\Omega \pm 5\%$	R22	RC-03-220 $\Omega \pm 5\%$
R82		RC-03-4.7 $\Omega \pm 5\%$	R23	RC-03-220 $\Omega \pm 5\%$
R83		RC-03-4.7 $\Omega \pm 5\%$	R24	RC-03-220 $\Omega \pm 5\%$
R60		RC-03-10 $\Omega \pm 5\%$	R42	RC-03-220 $\Omega \pm 5\%$
R64		RC-03-10 $\Omega \pm 5\%$	R43	RC-03-220 $\Omega \pm 5\%$
R80		RC-03-10 $\Omega \pm 5\%$	R143	RC-03-220 $\Omega \pm 5\%$
R35		RC-03-22 $\Omega \pm 5\%$	R11	RC-03-1K $\Omega \pm 5\%$
R36		RC-03-22 $\Omega \pm 5\%$	R53	RC-03-1K $\Omega \pm 5\%$
R99		RC-03-33 $\Omega \pm 5\%$	R54	RC-03-1K $\Omega \pm 5\%$
R100		RC-03-33 $\Omega \pm 5\%$	R55	RC-03-1K $\Omega \pm 5\%$
R102		RC-03-33 $\Omega \pm 5\%$	R56	RC-03-1K $\Omega \pm 5\%$
R103		RC-03-33 $\Omega \pm 5\%$	R68	RC-03-1K $\Omega \pm 5\%$
R104		RC-03-33 $\Omega \pm 5\%$	R78	RC-03-1K $\Omega \pm 5\%$
R121		RC-03-33 $\Omega \pm 5\%$	R86	RC-03-1K $\Omega \pm 5\%$
R123		RC-03-33 $\Omega \pm 5\%$	R88	RC-03-1K $\Omega \pm 5\%$
R124		RC-03-33 $\Omega \pm 5\%$	R144	RC-03-1K $\Omega \pm 5\%$
R125		RC-03-33 $\Omega \pm 5\%$	R122	RC-03-1K2 $\Omega \pm 5\%$
R116		RC-03-75 $\Omega \pm 5\%$	R72	RC-03-1K5 $\Omega \pm 5\%$
R89		RC-03-100 $\Omega \pm 5\%$	R1	RC-03-4K7 $\Omega \pm 5\%$
R91		RC-03-100 $\Omega \pm 5\%$	R10	RC-03-4K7 $\Omega \pm 5\%$
R92		RC-03-100 $\Omega \pm 5\%$	R14	RC-03-4K7 $\Omega \pm 5\%$
R94		RC-03-100 $\Omega \pm 5\%$	R16	RC-03-4K7 $\Omega \pm 5\%$
R142		RC-03-100 $\Omega \pm 5\%$	R135	RC-03-4K7 $\Omega \pm 5\%$
			R136	RC-03-4K7 $\Omega \pm 5\%$
			R70	RC-03-8K2 $\Omega \pm 5\%$
			R2	RC-03-10K $\Omega \pm 5\%$
			R3	RC-03-10K $\Omega \pm 5\%$



R4	RC-03-10K $\Omega \pm 5\%$	R49	RC-03-750K $\Omega \pm 5\%$
R5	RC-03-10K $\Omega \pm 5\%$	R73	RC-03-750K $\Omega \pm 5\%$
R6	RC-03-10K $\Omega \pm 5\%$	RN1	RC-03-33 $\Omega \times 4 \pm 5\%$
R7	RC-03-10K $\Omega \pm 5\%$	RN2	RC-03-33 $\Omega \times 4 \pm 5\%$
R8	RC-03-10K $\Omega \pm 5\%$		
R9	RC-03-10K $\Omega \pm 5\%$		
R18	RC-03-10K $\Omega \pm 5\%$	<b>Pef.NO.</b>	<b>PACKAGE. Description code</b>
R25	RC-03-10K $\Omega \pm 5\%$	<b>Capacitor</b>	
R26	RC-03-10K $\Omega \pm 5\%$	C33	CC41-CG-10P-50V $\pm 10\%$
R27	RC-03-10K $\Omega \pm 5\%$	C96	CC41-CG-22P-50V $\pm 10\%$
R28	RC-03-10K $\Omega \pm 5\%$	C97	CC41-CG-22P-50V $\pm 10\%$
R30	RC-03-10K $\Omega \pm 5\%$	C154	CC41-CG-22P-50V $\pm 10\%$
R31	RC-03-10K $\Omega \pm 5\%$	C31	CC41-CG-27P-50V $\pm 10\%$
R44	RC-03-10K $\Omega \pm 5\%$	C202	CC41-CG-47P-50V $\pm 10\%$
R77	RC-03-10K $\Omega \pm 5\%$	C203	CC41-CG-82P-50V $\pm 10\%$
R87	RC-03-10K $\Omega \pm 5\%$	C109	CC41-CG-100P-50V $\pm 10\%$
R109	RC-03-10K $\Omega \pm 5\%$	C119	CC41-CG-100P-50V $\pm 10\%$
R111	RC-03-10K $\Omega \pm 5\%$	C125	CC41-CG-100P-50V $\pm 10\%$
R113	RC-03-10K $\Omega \pm 5\%$	C50	CC41-B-120P-50V $\pm 10\%$
R119	RC-03-10K $\Omega \pm 5\%$	C68	CC41-B-150P-50V $\pm 10\%$
R120	RC-03-10K $\Omega \pm 5\%$	C69	CC41-B-150P-50V $\pm 10\%$
R137	RC-03-10K $\Omega \pm 5\%$	C122	CC41-B-330P-50V $\pm 10\%$
R138	RC-03-10K $\Omega \pm 5\%$	C123	CC41-B-330P-50V $\pm 10\%$
R139	RC-03-10K $\Omega \pm 5\%$	C194	CC41-B-330P-50V $\pm 10\%$
R140	RC-03-10K $\Omega \pm 5\%$	C35	CC41-B-390P-50V $\pm 10\%$
R79	RC-03-15K $\Omega \pm 5\%$	C36	CC41-B-390P-50V $\pm 10\%$
R67	RC-03-18K $\Omega \pm 5\%$	C73	CC41-B-390P-50V $\pm 10\%$
R75	RC-03-18K $\Omega \pm 5\%$	C74	CC41-B-390P-50V $\pm 10\%$
R45	RC-03-20K $\Omega \pm 5\%$	C38	CC41-B-470P-50V $\pm 10\%$
R46	RC-03-20K $\Omega \pm 5\%$	C200	CC41-B-560P-50V $\pm 10\%$
R48	RC-03-20K $\Omega \pm 5\%$	C103	CC41-B-1000P-50V $\pm 10\%$
R74	RC-03-20K $\Omega \pm 5\%$	C106	CC41-B-1000P-50V $\pm 10\%$
R33	RC-03-27K $\Omega \pm 5\%$	C107	CC41-B-1000P-50V $\pm 10\%$
R41	RC-03-33K $\Omega \pm 5\%$	C204	CC41-B-2200P-50V $\pm 10\%$
R101	RC-03-47K $\Omega \pm 5\%$	C174	CC41-B-4700P-50V $\pm 10\%$
R29	RC-03-100K $\Omega \pm 5\%$	C112	CC41-Y-0.01u-50V $\pm 10\%$
R32	RC-03-100K $\Omega \pm 5\%$	C113	CC41-Y-0.01u-50V $\pm 10\%$
R34	RC-03-100K $\Omega \pm 5\%$	C114	CC41-Y-0.01u-50V $\pm 10\%$
R58	RC-03-100K $\Omega \pm 5\%$	C115	CC41-Y-0.01u-50V $\pm 10\%$
R63	RC-03-100K $\Omega \pm 5\%$	C116	CC41-Y-0.01u-50V $\pm 10\%$
R50	RC-03-330K $\Omega \pm 5\%$	C145	CC41-Y-0.01u-50V $\pm 10\%$
R51	RC-03-330K $\Omega \pm 5\%$	C146	CC41-Y-0.01u-50V $\pm 10\%$
R145	RC-03-470K $\Omega \pm 5\%$	C171	CC41-Y-0.01u-50V $\pm 10\%$
R47	RC-03-750K $\Omega \pm 5\%$	C172	CC41-Y-0.01u-50V $\pm 10\%$

C32	CC41-Y-0.015u-50V±10%	C82	CC41-Y-0.1u-50V±10%
C61	CC41-Y-0.015u-50V±10%	C83	CC41-Y-0.1u-50V±10%
C121	CC41-Y-0.015u-50V±10%	C85	CC41-Y-0.1u-50V±10%
C39	CC41-Y-0.033u-50V±10%	C87	CC41-Y-0.1u-50V±10%
C1	CC41-Y-0.1u-50V±10%	C88	CC41-Y-0.1u-50V±10%
C3	CC41-Y-0.1u-50V±10%	C89	CC41-Y-0.1u-50V±10%
C5	CC41-Y-0.1u-50V±10%	C90	CC41-Y-0.1u-50V±10%
C7	CC41-Y-0.1u-50V±10%	C91	CC41-Y-0.1u-50V±10%
C9	CC41-Y-0.1u-50V±10%	C92	CC41-Y-0.1u-50V±10%
C11	CC41-Y-0.1u-50V±10%	C93	CC41-Y-0.1u-50V±10%
C13	CC41-Y-0.1u-50V±10%	C94	CC41-Y-0.1u-50V±10%
C16	CC41-Y-0.1u-50V±10%	C100	CC41-Y-0.1u-50V±10%
C18	CC41-Y-0.1u-50V±10%	C101	CC41-Y-0.1u-50V±10%
C22	CC41-Y-0.1u-50V±10%	C102	CC41-Y-0.1u-50V±10%
C23	CC41-Y-0.1u-50V±10%	C105	CC41-Y-0.1u-50V±10%
C24	CC41-Y-0.1u-50V±10%	C110	CC41-Y-0.1u-50V±10%
C26	CC41-Y-0.1u-50V±10%	C120	CC41-Y-0.1u-50V±10%
C28	CC41-Y-0.1u-50V±10%	C129	CC41-Y-0.1u-50V±10%
C29	CC41-Y-0.1u-50V±10%	C133	CC41-Y-0.1u-50V±10%
C30	CC41-Y-0.1u-50V±10%	C134	CC41-Y-0.1u-50V±10%
C34	CC41-Y-0.1u-50V±10%	C135	CC41-Y-0.1u-50V±10%
C37	CC41-Y-0.1u-50V±10%	C136	CC41-Y-0.1u-50V±10%
C40	CC41-Y-0.1u-50V±10%	C137	CC41-Y-0.1u-50V±10%
C41	CC41-Y-0.1u-50V±10%	C139	CC41-Y-0.1u-50V±10%
C42	CC41-Y-0.1u-50V±10%	C140	CC41-Y-0.1u-50V±10%
C46	CC41-Y-0.1u-50V±10%	C141	CC41-Y-0.1u-50V±10%
C47	CC41-Y-0.1u-50V±10%	C147	CC41-Y-0.1u-50V±10%
C48	CC41-Y-0.1u-50V±10%	C151	CC41-Y-0.1u-50V±10%
C49	CC41-Y-0.1u-50V±10%	C152	CC41-Y-0.1u-50V±10%
C51	CC41-Y-0.1u-50V±10%	C153	CC41-Y-0.1u-50V±10%
C53	CC41-Y-0.1u-50V±10%	C156	CC41-Y-0.1u-50V±10%
C60	CC41-Y-0.1u-50V±10%	C162	CC41-Y-0.1u-50V±10%
C63	CC41-Y-0.1u-50V±10%	C166	CC41-Y-0.1u-50V±10%
C64	CC41-Y-0.1u-50V±10%	C168	CC41-Y-0.1u-50V±10%
C65	CC41-Y-0.1u-50V±10%	C175	CC41-Y-0.1u-50V±10%
C66	CC41-Y-0.1u-50V±10%	C176	CC41-Y-0.1u-50V±10%
C70	CC41-Y-0.1u-50V±10%	C177	CC41-Y-0.1u-50V±10%
C72	CC41-Y-0.1u-50V±10%	C179	CC41-Y-0.1u-50V±10%
C76	CC41-Y-0.1u-50V±10%	C118	CC41-Y-0.1u-50V±10%
C77	CC41-Y-0.1u-50V±10%	C181	CC41-Y-0.1u-50V±10%
C78	CC41-Y-0.1u-50V±10%	C182	CC41-Y-0.1u-50V±10%
C79	CC41-Y-0.1u-50V±10%	C183	CC41-Y-0.1u-50V±10%
C80	CC41-Y-0.1u-50V±10%	C185	CC41-Y-0.1u-50V±10%
C81	CC41-Y-0.1u-50V±10%	C196	CC41-Y-0.1u-50V±10%

C197	CC41-Y-0.1u-50V±10%	C132	CD11X-10V-47u±20%
C201	CC41-Y-0.1u-50V±10%	C138	CD11X-10V-47u±20%
C192	CC41-Y-0.47u-50V±10%	C157	CD11X-10V-47u±20%
C193	CC41-Y-0.47u-50V±10%	C167	CD11X-10V-47u±20%
C55	CC41-Y-1u-50V±10%	C169	CD11X-10V-47u±20%
C56	CC41-Y-1u-50V±10%	C170	CD11X-10V-47u±20%
C57	CC41-Y-1u-50V±10%	C178	CD11X-10V-47u±20%
C58	CC41-Y-1u-50V±10%	C180	CD11X-10V-47u±20%
C111	CC41-Y-1u-50V±10%	C198	CD11X-10V-47u±20%
C126	CC41-Y-1u-50V±10%	C199	CD11X-10V-47u±20%
C127	CC41-Y-1u-50V±10%	C25	CD11X-10V-100u±20%
C164	CD11X-10V-1u±20%	C2	CD11X-10V-100u±20%
C165	CD11X-10V-1u±20%	C4	CD11X-10V-100u±20%
C195	CD11X-10V-2.2u±20%	C6	CD11X-10V-100u±20%
C184	CD11X-10V-3.3u±20%	C27	CD11X-10V-100u±20%
C186	CD11X-10V-3.3u±20%	C8	CD11X-10V-220u±20%
C15	CD11X-10V-10u±20%	C10	CD11X-10V-220u±20%
C44	CD11X-10V-10u±20%	C12	CD11X-10V-220u±20%
C45	CD11X-10V-10u±20%	C14	CD11X-10V-220u±20%
C71	CD11X-10V-10u±20%	C17	CD11X-10V-220u±20%
C75	CD11X-10V-10u±20%	C19	CD11X-10V-220u±20%
C99	CD11X-10V-10u±20%		
C142	CD11X-10V-10u±20%	<b>Pef.NO.</b>	<b>PACKAGE. Description code</b>
C143	CD11X-10V-10u±20%	<b>Connector</b>	
C144	CD11X-10V-10u±20%	CN3	SF-HD6PU
C148	CD11X-10V-10u±20%	CN4	PH2-5 (bend)
C149	CD11X-10V-10u±20%	CN5	PH2-6 (bend)
C150	CD11X-10V-10u±20%	CN7	PH2-4 (bend)
C163	CD11X-10V-10u±20%	CN6	TJC3-6 (bend)
C86	CD11X-10V-10u±20%	CN8	TJC3-12
C187	CD11X-10V-10u±20%	CN10	TJC3-12
C188	CD11X-10V-10u±20%	CN11	TJC3-12
C20	CD11X-10V-47u±20%	CN9	TJC3-10
C21	CD11X-10V-47u±20%	CN1	TJC3-10 (bend)
C43	CD11X-10V-47u±20%	CN12	FPC125-DIP-11(bend)
C54	CD11X-10V-47u±20%		
C59	CD11X-10V-47u±20%	<b>Pef.NO.</b>	<b>PACKAGE. Description code</b>
C62	CD11X-10V-47u±20%	<b>Diode</b>	
C84	CD11X-10V-47u±20%	D1	1N4001
C98	CD11X-10V-47u±20%	D2	SMT1206 1N4148
C104	CD11X-10V-47u±20%	R85	SMT twin-diode
C108	CD11X-10V-47u±20%	D3	5V Zener
C130	CD11X-10V-47u±20%		
C131	CD11X-10V-47u±20%		

Pef.NO.	PACKAGE.	Description code	U5		BA5954
<b>Ferrite Bead</b>			U6		MT1379BE-BNS
L1	SMT1206	FB	U7	SO8	24C16
L2	SMT1206	FB	U8		W986416DH-7
L3	SMT1206	FB	U9	SO16	4052
L4	SMT1206	FB	U10		AT49BV162A-70TI
L5	SMT1206	FB	U13	SO16	74HC157
L6	SMT1206	FB	U14		CS4360-KZ
L7	SMT1206	FB	U15	SSOP-16	CS5333
L8	SMT1206	FB	U16	SSOP-28	CS8415
L10	SMT1206	FB	U19	SO20	SAA6588T
L14	SMT1206	FB	U12		79L05
L15	SMT1206	FB	U18		78L09
L16	SMT1206	FB			
L17	SMT1206	FB			
L19	SMT1206	FB	<b>Pef.NO.</b>	<b>PACKAGE.</b>	<b>Description code</b>
L20	SMT1206	FB	<b>Crystal</b>		
L21	SMT1206	FB	Y1		27MHz
L23	SMT1206	FB	Y2		4.332MHz
L24	SMT1206	FB			

Pef.NO.	PACKAGE.	Description code
<b>Inductor</b>		
L11	SMT0805	10uH
L12	SMT0805	10Uh

Pef.NO.	PACKAGE.	Description code
<b>Transistor</b>		
Q4	SMT	2SK3018
Q5	SMT	2SK3018
Q6	SMT	8550
Q7	SMT	8550
Q3	SMT	3904
Q2		3904
Q8		8550
Q9		8550
Q10		SS8050
Q11		SS8050
Q1		3906

Pef.NO.	PACKAGE.	Description code
<b>IC</b>		
U1	SOT-223AA	AIC1117-3.3V
U4		MT1336E-BPS

## IC KEY VOLTANGE REFERENCE LIST

### *U1 AIC1117-3.3V*

PIN NO.	DC VOLTAGE	PIN NO.	DC VOLTAGE
1	GND	3	5V
2	3.3V	4	3.3V

### *U4 MT1336E-BPS*

PIN NO.	DC VOLTAGE	PIN NO.	DC VOLTAGE	PIN NO.	DC VOLTAGE	PIN NO.	DC VOLTAGE
2	5V	27	2V	56	2V	99	2.4V
3	GND	28	1.7V	57	GND	100	2.4V
4	GND	29	1.8V	62	GND	101	2.4V
5	5V	30	3V	63	GND	102	2.4V
6	1.4V	31	GND	64	5V	103	2.4V
7	1.6V	32	2.3V	65	GND	104	2.4V
8	GND	33	2.3V	67	5V	107	GND
12	GND	34	GND	68	GND	108	1.6V
14	5V	37	5V	69	5V	109	5V
15	3V	38	GND	71	1V	114	5V
16	1.7V	39	GND	72	1V	115	2.4V
17	2.4V	40	GND	73	GND	117	GND
18	1.7V	41	GND	82	GND	118	GND
19	2.4V	47	4.4V	83	GND	120	5V
20	1.4V	48	4.4V	88	2V	125	3.4V
21	1.7V	49	4.4V	89	1.4V	126	5V
22	5V	50	5V	90	1.4V	128	GND
24	3.3V	51	5V	96	2.4V		
25	2V	52	5V	97	2.4V		
26	2.6V	54	5V	98	2.4V		

### *U5 BA5954*

PIN NO.	DC VOLTAGE	PIN NO.	DC VOLTAGE	PIN NO.	DC VOLTAGE	PIN NO.	DC VOLTAGE
1	1.6V	8	5V	15	2.6V	22	GND
2	2.6V	9	5V	16	2.6V	24	2.6V
3	2.6V	10	GND	17	2.6V	25	2.6V
4	1.8V	11	2.6V	18	2.6V	27	1.8V
5	1.8V	12	2.6V	19	GND	28	5V
6	1.8V	13	2.6V	20	2.6V		
7	2.6V	14	2.8V	21	5V		

**U6 MT1379BE-BNS**

PIN NO.	DC VOLTAGE	PIN NO.	DC VOLTAGE	PIN NO.	DC VOLTAGE	PIN NO.	DC VOLTAGE
1	1.6V	54	GND	101	3.3V	159	3.4V
2	GND	55	3.4V	102	GND	160	1.4V
3	1V	58	3.6V	103	1.8V	161	1.4V
4	2V	60	GND	104	1.4V	162	2.6V
5	1.6V	62	4.7V	108	3.4V	163	GND
6	1.6V	63	5V	109	GND	164	1V
8	2V	64	2V	110	1.2V	165	3.4V
11	3.4V	65	4.6V	111	3.4V	166	1V
12	1.8V	66	3.4V	112	2.2V	167	GND
13	1.8V	67	3.6V	113	1.6V	168	1V
17	2.8V	68	4.7V	114	1.6V	169	3.4V
18	2.2V	69	4.4V	115	GND	171	GND
19	1.6V	71	4.2V	116	1.8V	177	1.6V
20	GND	72	2.8V	117	3V	178	GND
25	0.5V	73	2.6V	120	2.8V	180	2.2V
26	0.5V	74	3.4V	122	1.6V	182	2.8V
27	0.5V	77	GND	123	1.6V	185	3.4V
28	GND	78	2V	124	1.6V	189	GND
29	0.5V	79	1V	125	GND	192	3.4V
30	3.6V	80	1.4V	126	5V	193	1.8V
31	2V	81	1.4V	130	3.4V	194	2.2V
32	1.6V	82	2.8V	131	1.8V	197	2V
33	2V	83	1.4V	132	2.4V	199	GND
34	2V	84	1.6V	135	GND	202	1.4V
35	3.3V	85	1.4V	136	2.6V	203	1.7V
36	1.6V	86	1.8V	138	3.3V	204	1.4V
37	2V	87	1.4V	139	3.3V	205	1.7V
38	1.8V	88	2.8V	140	2.8V	206	2.4V
39	2.4V	89	3.2V	143	3.2V	207	2V
40	2.4V	90	3V	145	GND	208	1.2V
41	2.4V	91	1.4V	146	5V	209	3.2V
42	2.8V	92	GND	147	4.4V	210	1.8V
43	2.8V	94	1V	148	1.8VV	211	3V
44	1.4V	95	2V	149	1.8V	212	3.4V
45	1.4V	96	2.8V	150	3.4V	215	1.8V
46	1.4V	97	3.4V	151	2V	216	1.8V
47	2.8V	98	3V	153	1.4V		
48	3.6V	99	1V	157	3.4V		
49	3.6V	100	1V	158	3.4V		

**U7 24C16**

PIN NO.	DC VOLTAGE	PIN NO.	DC VOLTAGE	PIN NO.	DC VOLTAGE	PIN NO.	DC VOLTAGE
1	GND	3	GND	5	1.4V	8	3.3V
2	GND	4	GND	6	2.2V		

**U8 W986416DH-7**

PIN NO.	DC VOLTAGE	PIN NO.	DC VOLTAGE	PIN NO.	DC VOLTAGE	PIN NO.	DC VOLTAGE
1	3.3V	13	2V	28	GND	45	1V
2	1.8V	14	3.3V	29	1.6V	46	GND
3	3.3V	15	3V	30	1.6V	47	3V
4	1.4V	16	1.4V	31	2.2V	48	2.8V
5	1.6V	17	3V	32	1.2V	49	3.3V
6	GND	18	3.3V	38	1.2V	50	2V
7	1.4V	19	3V	39	1.8V	51	1V
8	1.4V	20	1.4V	40	3V	52	GND
9	3.3V	24	1.6V	41	GND	54	GND
10	1.4V	25	1.6V	42	3.3V		
11	1V	26	1.6V	43	3.3V		
12	GND	27	3.3V	44	1V		

**U9 4052**

PIN NO.	DC VOLTAGE
7	-5V
16	+5V

**U10 AT49BV162A-70TI**

PIN NO.	DC VOLTAGE	PIN NO.	DC VOLTAGE	PIN NO.	DC VOLTAGE	PIN NO.	DC VOLTAGE
1	3.6V	13	3.6V	25	2.4V	40	2V
2	3.6V	14	3.6V	27	GND	42	1.6V
3	0.5V	19	3.6V	29	2.4V	44	2V
4	0.5V	20	2.8V	31	1.8V	45	2.4V
5	0.5V	21	1.4V	33	2V	46	GND
6	0.5V	22	1.4V	35	1.6V	47	GND
11	3.6V	23	1.4V	37	3.6V		
12	3.6V	24	2.8V	38	2V		

**U13 74HC157**

PIN NO.	DC VOLTAGE	PIN NO.	DC VOLTAGE	PIN NO.	DC VOLTAGE	PIN NO.	DC VOLTAGE
3	1.4V	6	GND	11	GND	15	GND
4	2V	8	GND	13	GND	16	5V
5	GND	10	GND	14	GND		

**U14 CS4360-KZ**

PIN NO.	DC VOLTAGE	PIN NO.	DC VOLTAGE	PIN NO.	DC VOLTAGE	PIN NO.	DC VOLTAGE
1	5V	8	5V	14	5V	23	2.6V
2	2V	9	GND	15	GND	24	2.6V
3	2V	10	3.6V	16	4.6V	26	2.6V
5	2V	11	4.8V	17	1.6V	27	2.6V
6	2V	12	3.8V	21	GND		
7	2V	13	GND	22	5V		

**U15 CS5333**

PIN NO.	DC VOLTAGE	PIN NO.	DC VOLTAGE	PIN NO.	DC VOLTAGE	PIN NO.	DC VOLTAGE
1	3.6V	5	3.6V	9	GND	13	1.6V
2	2V	6	GND	10	GND	14	1.6V
3	2V	7	2V	11	2.6V	15	1.6V
4	1.6V	8	GND	12	GND	16	3.6V

**U16 CS8415**

PIN NO.	DC VOLTAGE	PIN NO.	DC VOLTAGE	PIN NO.	DC VOLTAGE	PIN NO.	DC VOLTAGE
1	3.8V	6	5V	14	GND	22	GND
2	5V	7	GND	15	GND	23	5V
3	5V	9	3.6V	16	2.4V	25	GND
4	2.6V	10	2.4V	17	2.4V	26	GND
5	2.6V	13	GND	19	5V	28	2.4V

**U12 79L05**

PIN NO.	DC VOLTAGE
1	-12V
2	GND
3	-5V



***U18 78L09(IN THE TUNER)***

PIN NO.	DC VOLTAGE
1	GND
2	9V
3	+12V

***U19 SAA6588T***

PIN NO.	DC VOLTAGE	PIN NO.	DC VOLTAGE	PIN NO.	DC VOLTAGE	PIN NO.	DC VOLTAGE
4	2.8V	8	5.2V	14	5.2V	19	2V
5	1V	9	4.8V	16	2.4V	20	4.4V
6	GND	10	2.8V	17	2.6V		
7	5.2V	13	3V	18	2.8V		

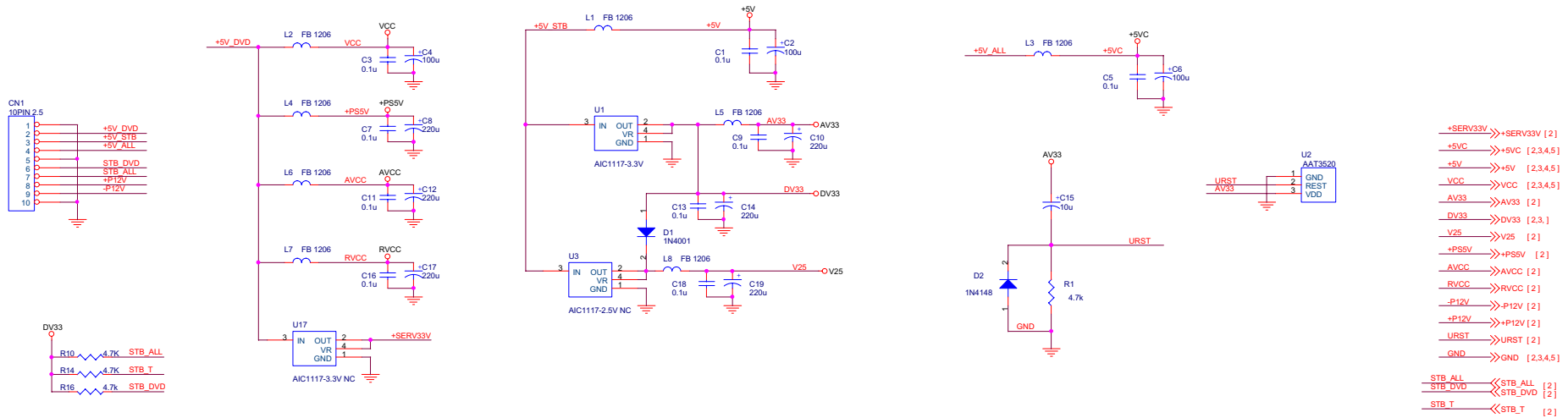
# XINGQU1379AM6-11.6

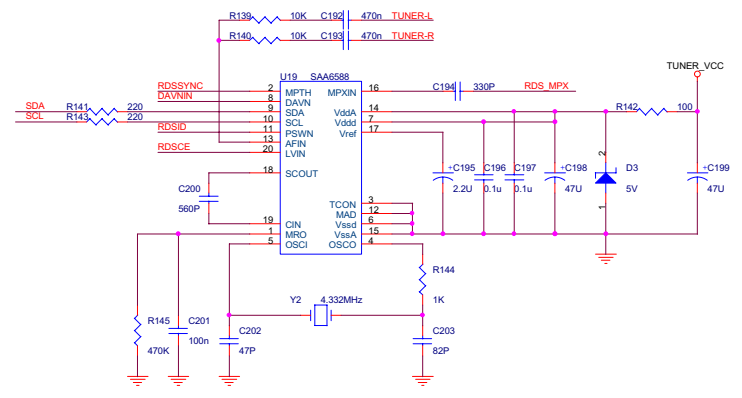
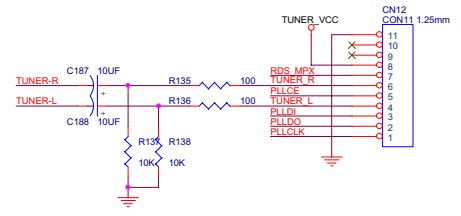
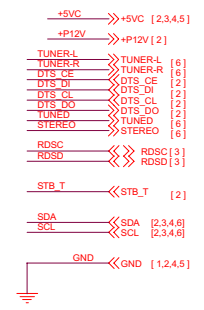
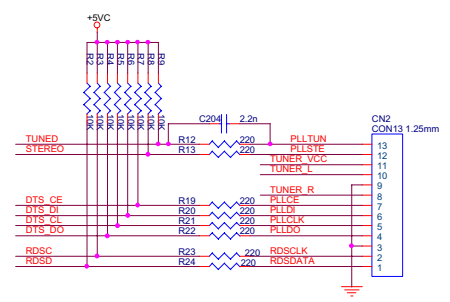
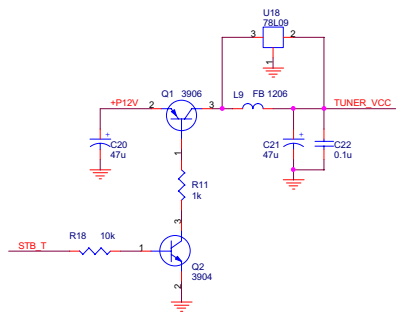
## MISSIONRIGHT MT1379E (LQFP218) DVD MP Board for SANYO HD60

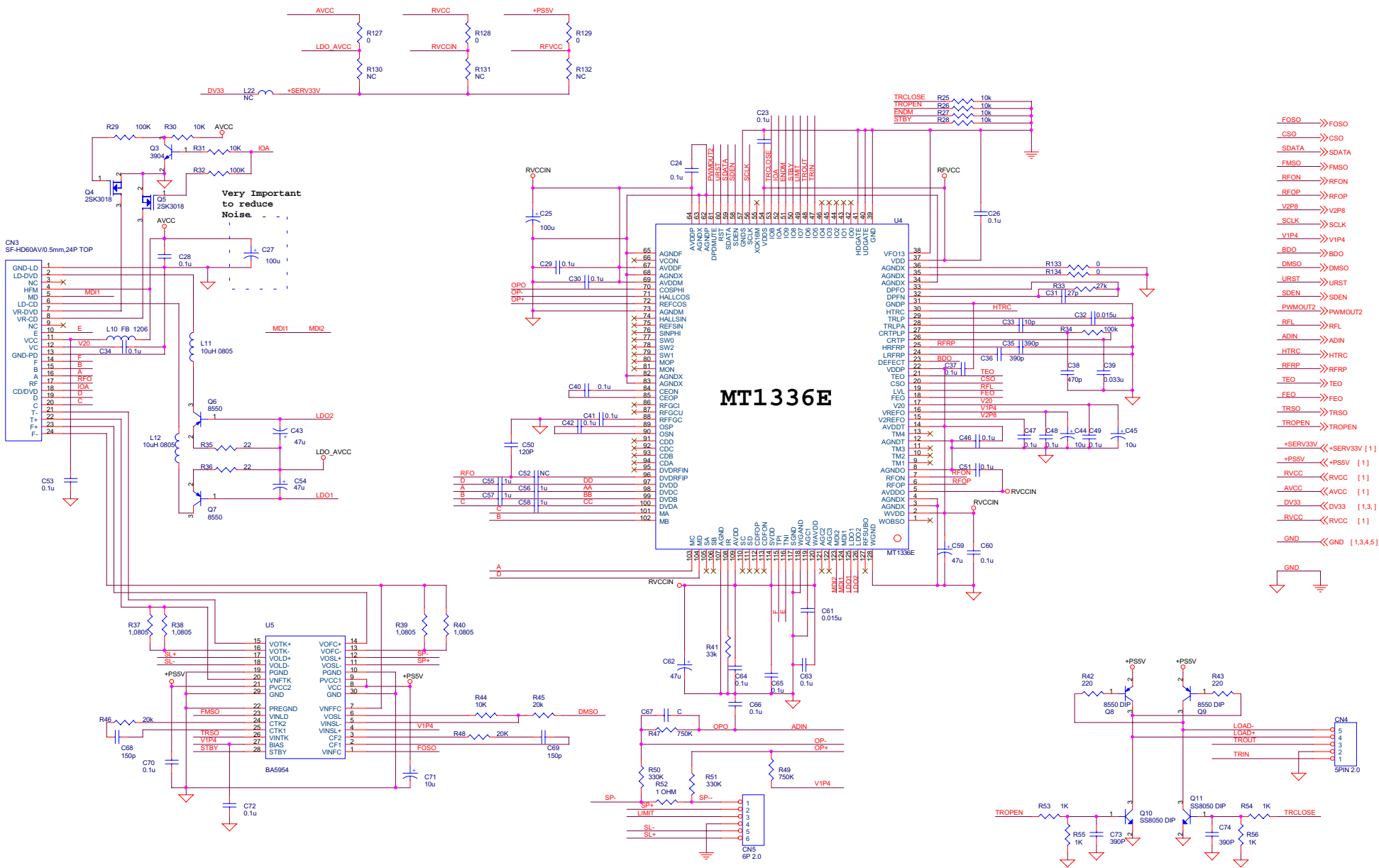
- 1 INDEX & POWER, RESET
- 2 RF / SERVO - MT1336E
- 3 MPEG - MT1379E
- 4 MEMORY , SDRAM , VIDEO FILTER AND OUTPUT

NAME	TYPE	DEVICE
VCC	Digital 5V	SUPPLY
RVCC	Servo 5V	MT1336E
AVCC	RF 5V	PICKUP HEADER
V33	Digital 3.3V	SDRAM, Flash, VideoDAC
DV33	Digital 3.3V	MT1379E
AV33	Servo 3.3V	MT1379E
V25	Digital 2.5V	MT1379E
+5VA	Audio 5V	Audio DAC
+5VV	Video 5V	Video filter

NAME	TYPE
GND	Digital Ground
SGND	Servo Analog Ground
AGND	Audio Ground
VGND	Video Ground

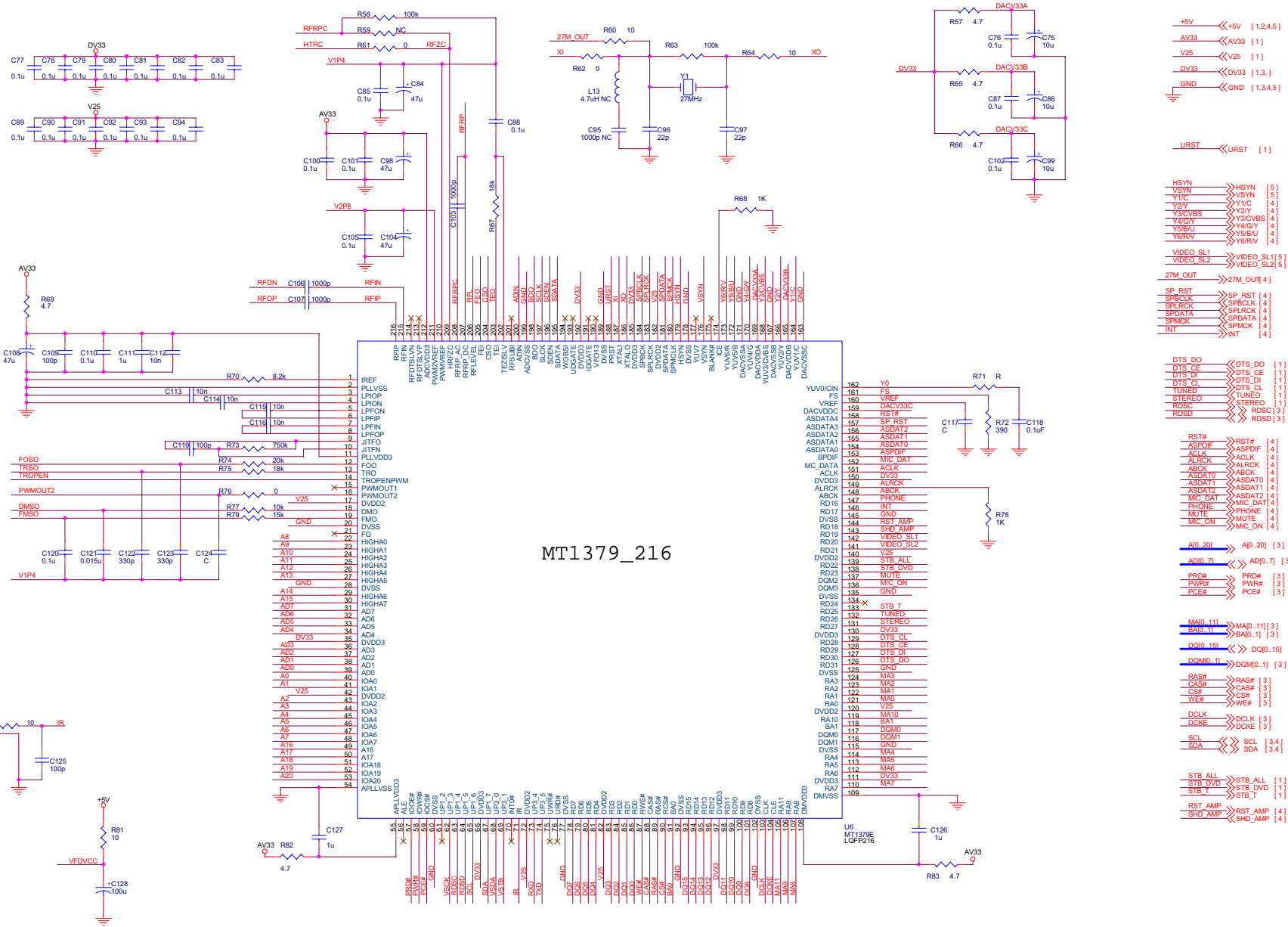






- FOSO → FOSO
- CSO → CSO
- SDATA → SDATA
- FMSO → FMSO
- RFSO → RFSO
- RFOF → RFOF
- V2P8 → V2P8
- SCLK → SCLK
- V1P4 → V1P4
- BDO → BDO
- DMSO → DMSO
- URST → URST
- SDEN → SDEN
- PWMOUT2 → PWMOUT2
- RFL → RFL
- ADIN → ADIN
- HTRC → HTRC
- RFRP → RFRP
- TEO → TEO
- FEO → FEO
- TRSO → TRSO
- TROPEN → TROPEN
- +SERV33V → +SERV33V [1]
- +PSSV → +PSSV [1]
- RVCC → RVCC [1]
- AVCC → AVCC [1]
- DV33 → DV33 [1,3]
- RVCC → RVCC [1]
- GND → GND [1,3,4,5]

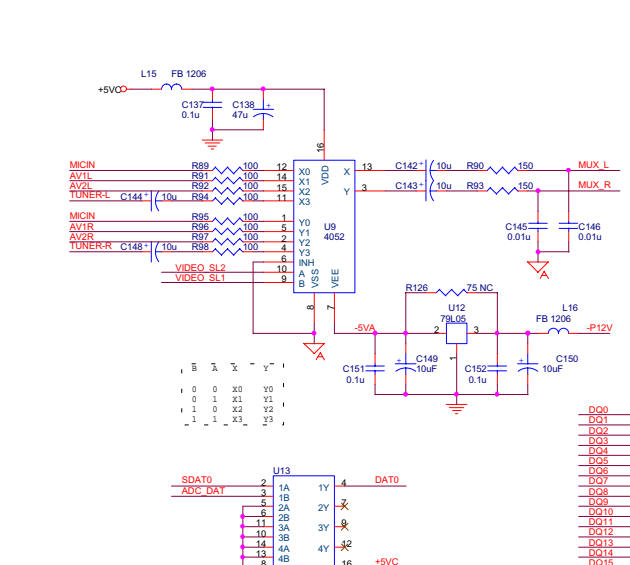
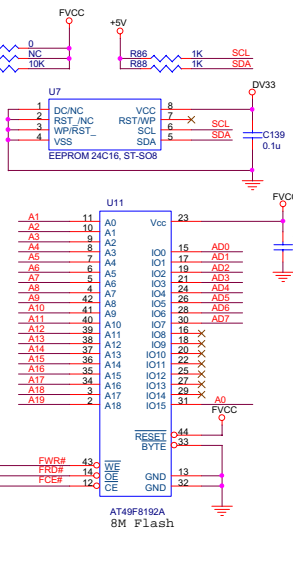
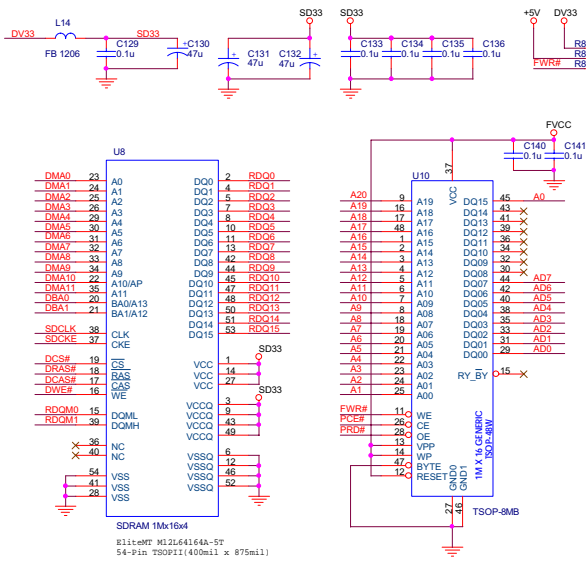
- [2] FOSO >> FOSO
- [2] CSO >> CSO
- [2] SDATA >> SDATA
- [2] FMSO >> FMSO
- [2] RFON >> RFON
- [2] RFOP >> RFOP
- [2] V2P8 >> V2P8
- [2] SCLK >> SCLK
- [2] VIP4 >> VIP4
- [2] BDO >> BDO
- [2] DMSO >> DMSO
- [2] URST >> URST
- [2] SDEN >> SDEN
- [2] PWMOUT2 >> PWMOUT2
- [2] RFL >> RFL
- [2] ADIN >> ADIN
- [2] HTRC >> HTRC
- [2] RFRP >> RFRP
- [2] TEO >> TEO
- [2] FEO >> FEO
- [2] TRSO >> TRSO
- [2] TROPEN >> TROPEN



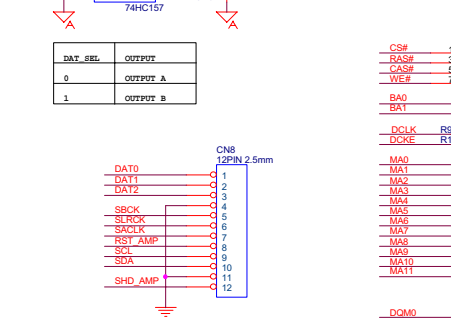
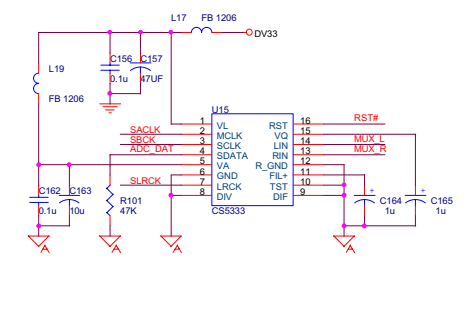
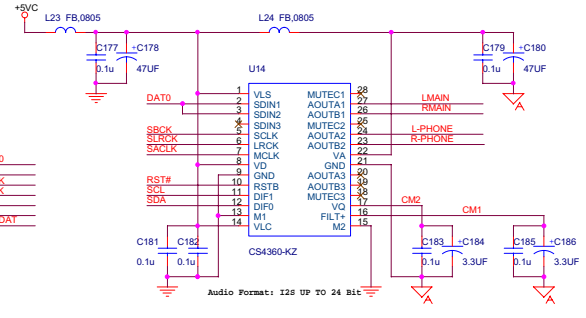
**MissionRight**

Title		MPEG
Size	Document Number	MT1379E_218 MP Board
Date:	Friday, October 24, 2003	Sheet 3 of 4
Rev	2	

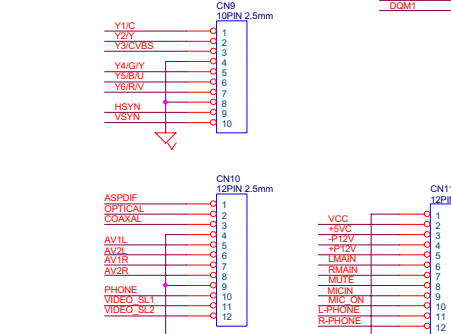
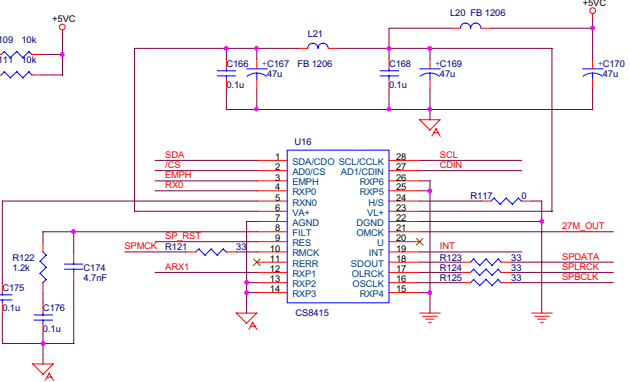
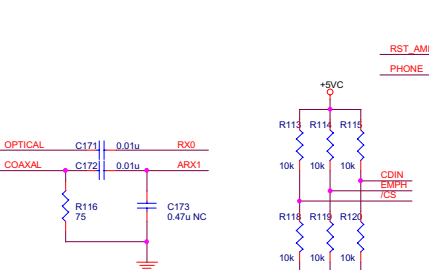
- [2] DLCK DCLK
- [2] DCKE DCKE
- [2] CAS# CAS#
- [2] RAS# RAS#
- [2] WE# WE#
- [2] CS# CS#
- [2] MA0\_11 MA0\_11
- [2] BA0\_11 BA0\_11
- [2] DQ0\_15 DQ0\_15
- [2] DQM0\_1 DQM0\_1
- [2] PCIE# PCIE#
- [2] PRW# PRW#
- [2] PWR# PWR#
- [2] A0\_20 A0\_20
- [2] AD0\_7 AD0\_7
- [24] SCL SCL
- [24] SDA SDA
- PCIE# FCE#
- PRW# FPD#
- PWR# FWR#
- [1,2] +5V# +5VCC
- [3] VCC# VCC
- [1,2,4,5] +9# +9V
- [1,2] DV3# DV33
- [1,2,4,5] GND# GND



- [1] TUNER# TUNER#
- [1] TUNER# TUNER#
- [3] RST# RST#
- [3] ACK# ACK#
- [3] ALRCK# ALRCK#
- [3] ABCK# ABCK#
- [3] ASDAT0 ASDAT0
- [3] ASDAT1 ASDAT1
- [3] ASDAT2 ASDAT2
- [3] MIC\_DAT MIC\_DAT
- [3] PHONE PHONE
- [3] MUTE MUTE
- [3] MIC\_ON MIC\_ON
- [3] VIDEO\_SL1 VIDEO\_SL1
- [3] VIDEO\_SL2 VIDEO\_SL2
- [2] STB\_DVD STB\_DVD
- [3] SP\_RST SP\_RST
- [3] 27M\_OUT 27M\_OUT
- [3] ASPDIF ASPDIF
- [1] +9V# +9V
- [3] HSYN HSYN
- [3] VSYN VSYN
- [3] Y1C Y2Y
- [3] Y2N Y3CVBS
- [3] Y3CVBS Y3CVBS
- [3] Y4GY Y5BU
- [3] Y5BU Y6RV
- [3] SPBCLK SPBCLK
- [3] SPLRCK SPLRCK
- [3] SPDATA SPDATA
- [3] SPMCK SPMCK
- [3] INT INT
- [3] RST\_AMP RST\_AMP
- [3] SHD\_AMP SHD\_AMP



- [3] SPBCLK SPBCLK
- [3] SPLRCK SPLRCK
- [3] SPDATA SPDATA
- [3] SPMCK SPMCK
- [3] INT INT
- [3] RST\_AMP RST\_AMP
- [3] SHD\_AMP SHD\_AMP



- DQ0 RD00
- DQ1 RD01
- DQ2 RD02
- DQ3 RD03
- DQ4 RD04
- DQ5 RD05
- DQ6 RD06
- DQ7 RD07
- DQ8 RD08
- DQ9 RD09
- DQ10 RD010
- DQ11 RD011
- DQ12 RD012
- DQ13 RD013
- DQ14 RD014
- DQ15 RD015
- CS# 1 DCS#
- RAS# 3 DRAS#
- CAS# 5 DCAS#
- WE# 7 DWE#
- BA0 BA0
- BAT DBAT
- DCLK R99 SDCLK
- DCKE R100 SDCKE
- MA0 DMA0
- MA1 DMA1
- MA2 DMA2
- MA3 DMA3
- MA4 DMA4
- MA5 DMA5
- MA6 DMA6
- MA7 DMA7
- MA8 DMA8
- MA9 DMA9
- MA10 DMA10
- MA11 DMA11
- DQM0 RDQM0
- DQM1 RDQM1

**MissionRight**

