

# JVC

## SERVICE MANUAL

COMPACT COMPONENT SYSTEM

### CA-D7T/CA-D75T

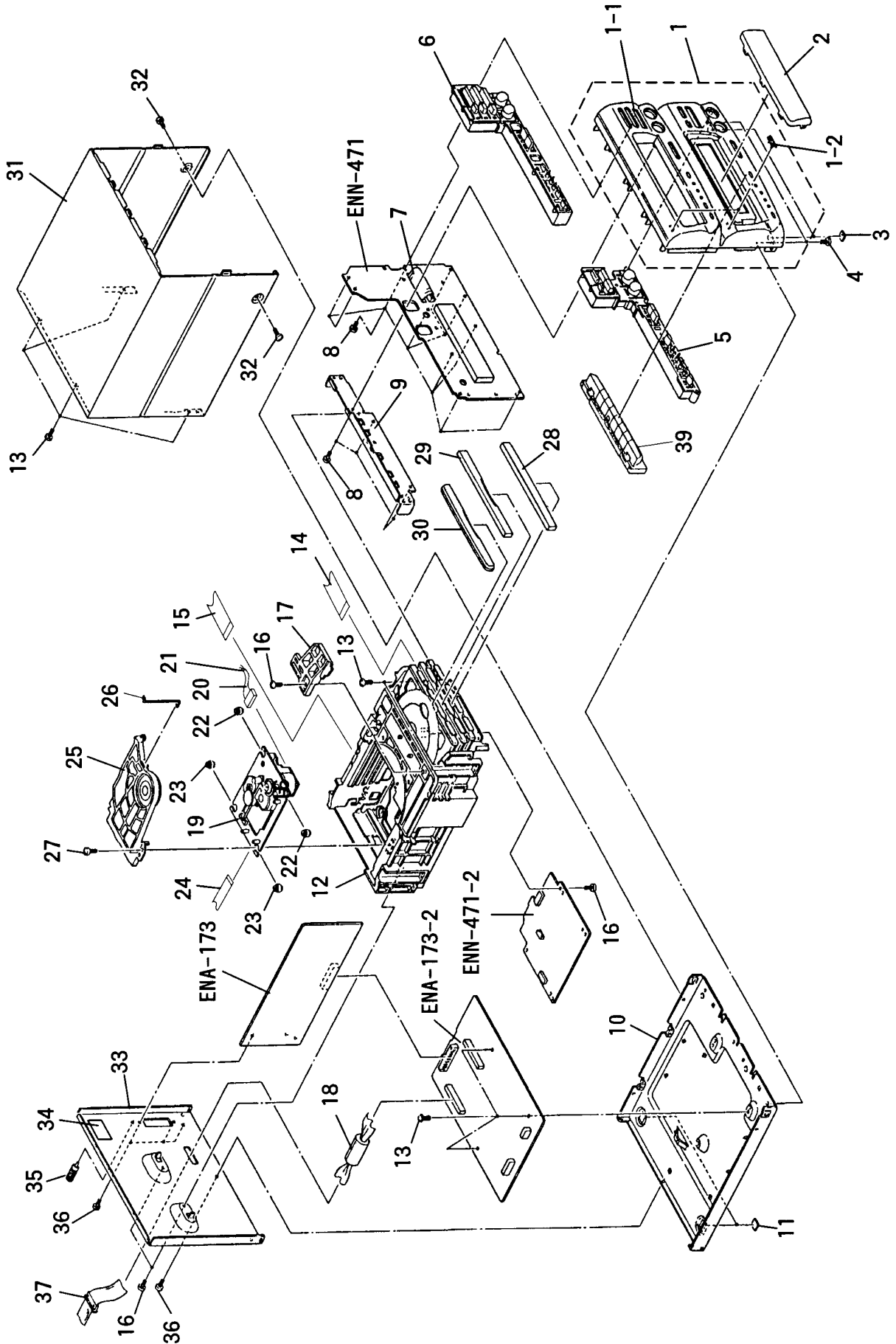
<SUPPLEMENT>

This supplement with the exploded view covers some misprintings found on the parts list (page 5-3) for XT-D7T and XT-D75T.  
See the supplement for parts ordering.

# General Exploded View and Parts List

Block No. 

|   |   |   |   |
|---|---|---|---|
| M | 3 | M | M |
|---|---|---|---|



## ■ Parts List (XT-D75T)

Block No. **M3MM**

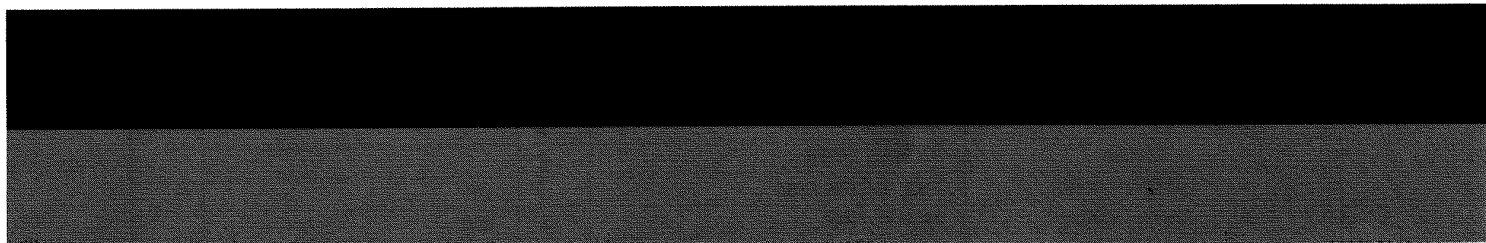
| △ | No. | Parts No.      | Parts Name             | Item | Description      | Area |
|---|-----|----------------|------------------------|------|------------------|------|
|   | 1   | EFP-XTD8TE(S)  | FRONT PANEL ASSY       | 1    |                  |      |
|   | 1-1 | E103144-001SM  | FRONT PANEL            | 1    |                  |      |
|   | 1-2 | E406971-221    | JVC MARK               | 2    |                  |      |
|   | 2   | E208809-001SM  | WINDOW SCREEN          | 1    |                  |      |
|   | 3   | E75896-001     | SPACER                 | 2    |                  |      |
|   | 4   | SBSG3008M      | TAPPING SCREW          | 2    |                  |      |
|   | 5   | E208811-001SM  | PUSH BUTTON ASSY       | 1    | CD               |      |
|   | 6   | E208814-001SM  | PUSH BUTTON            | 1    | RDS              |      |
|   | 7   | VWF1237-20TTBW | FLAT WIRE ASSY         | 1    | FC841            |      |
|   | 8   | SDSF2608Z      | SCREW                  | 14   |                  |      |
|   | 9   | E208824-001SM  | STAY BRACKET           | 1    |                  |      |
|   | 10  | E102974-002SM  | CHASSIS BASE           | 1    |                  |      |
|   | 11  | E75896-006     | FELT SPACER            | 2    |                  |      |
|   | 12  | -----          | CHANGER MECHANISM ASSY | 1    | See page 5-4     |      |
|   | 13  | GBSG3008CC     | TAPPING SCREW          | 9    |                  |      |
|   | 14  | VWF1210-25TTB  | FLAT WIRE ASSY         | 1    |                  |      |
|   | 15  | VWF1217-25TTB  | FLAT WIRE ASSY         | 1    | FC604            |      |
|   | 16  | SBSF3008Z      | TAPPING SCREW          | 4    |                  | C    |
|   |     | SBSF3008Z      | TAPPING SCREW          | 5    |                  | J    |
|   | 17  | E309662-001    | DISK STOPPER           | 1    |                  |      |
|   | 18  | ENZ8104-005    | NOISE FILTER           | 1    |                  | J    |
|   | 19  | -----          | CD MECHANISM ASSY      | 1    | See page 5-6     |      |
|   | 20  | VDM1001-M001A  | SOCKET WIRE ASSY       | 1    |                  |      |
|   | 21  | VYSA1R2-033    | SPACER                 | 1    |                  |      |
|   | 22  | FMYH4003-002   | INSULATOR              | 2    |                  |      |
|   | 23  | FMYH4003-001   | INSULATOR              | 2    |                  |      |
|   | 24  | VWF1015-09TTAV | FLAT WIRE ASSY         | 1    |                  |      |
|   | 25  | VKS3703-00DMM  | CLAMPER                | 1    |                  |      |
|   | 26  | VKW5187-001    | ROD                    | 1    |                  |      |
|   | 27  | SPST2606Z      | TAPPING SCREW          | 1    |                  |      |
|   | 28  | E208818-001SM  | CD FITTING             | 1    |                  |      |
|   | 29  | E208820-001SM  | CD FITTING             | 1    |                  |      |
|   | 30  | E208822-001SM  | CD FITTING             | 1    |                  |      |
|   | 31  | E208843-006    | METAL COVER            | 1    |                  |      |
|   | 32  | SDSG3006M      | TAPPING SCREW          | 2    |                  |      |
|   | 33  | E208825-015SM  | REAR PANEL             | 1    |                  | J    |
|   |     | E208825-016SM  | REAR PANEL             | 1    |                  | C    |
|   | 34  | E406507-001    | CAUTION LABEL          | 1    |                  | C    |
|   | 35  | E409257-001    | EARTH TERMINAL         | 1    |                  |      |
|   | 36  | E73273-003     | SPECIAL SCREW          | 4    |                  |      |
|   | 37  | EWP907-022     | FLAT WIRE ASSY         | 1    | SYSTEM CONNECTOR |      |
|   | -   | E307570-001    | NUMBER LABEL           | 1    |                  | J    |

## ■ Parts List (XT-D7T)

\* Please see the parts list for XT-D75T for parts which are not described.

| △ | No. | Parts No.     | Parts Name | Item | Description | Area |
|---|-----|---------------|------------|------|-------------|------|
|   | 33  | E208825-001SM | REAR PANEL | 1    |             | J    |
|   |     | E208825-010SM | REAR PANEL | 1    |             | C    |

**CA-D7T/CA-D75T**




**JVC**

VICTOR COMPANY OF JAPAN LIMITED

AUDIO DIVISION, YAMATO PLANT, 1644, SHIMOTURUMA, YAMATO-SHI, KANAGAWA-KEN, 242, Japan

(No.20576B)

 Printed in Japan  
9610(V)