

# JVC

# SCHEMATIC DIAGRAMS

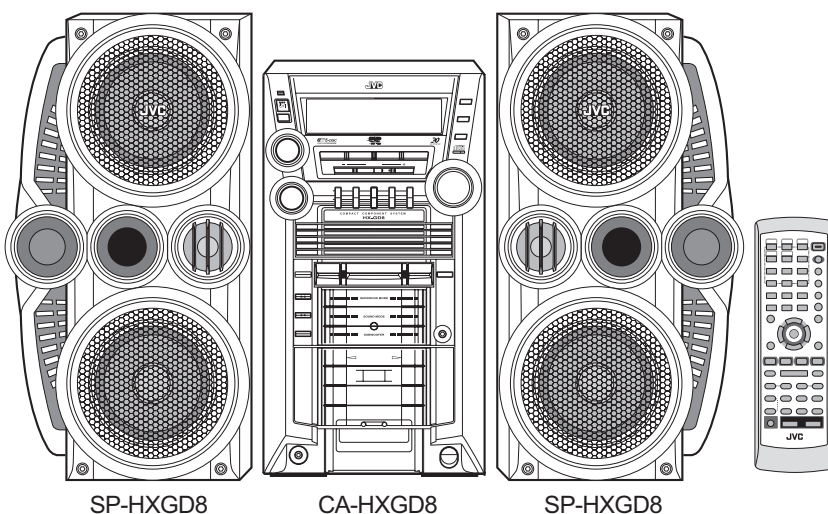
## COMPACT COMPONENT SYSTEM

### HX-GD8

CD-ROM No.SML200407

#### Area suffix

B ----- U.K.  
 E ----- Continental Europe  
 EN ----- Northern Europe  
 EV ----- Eastern Europe  
 EE ----- Russian Federation



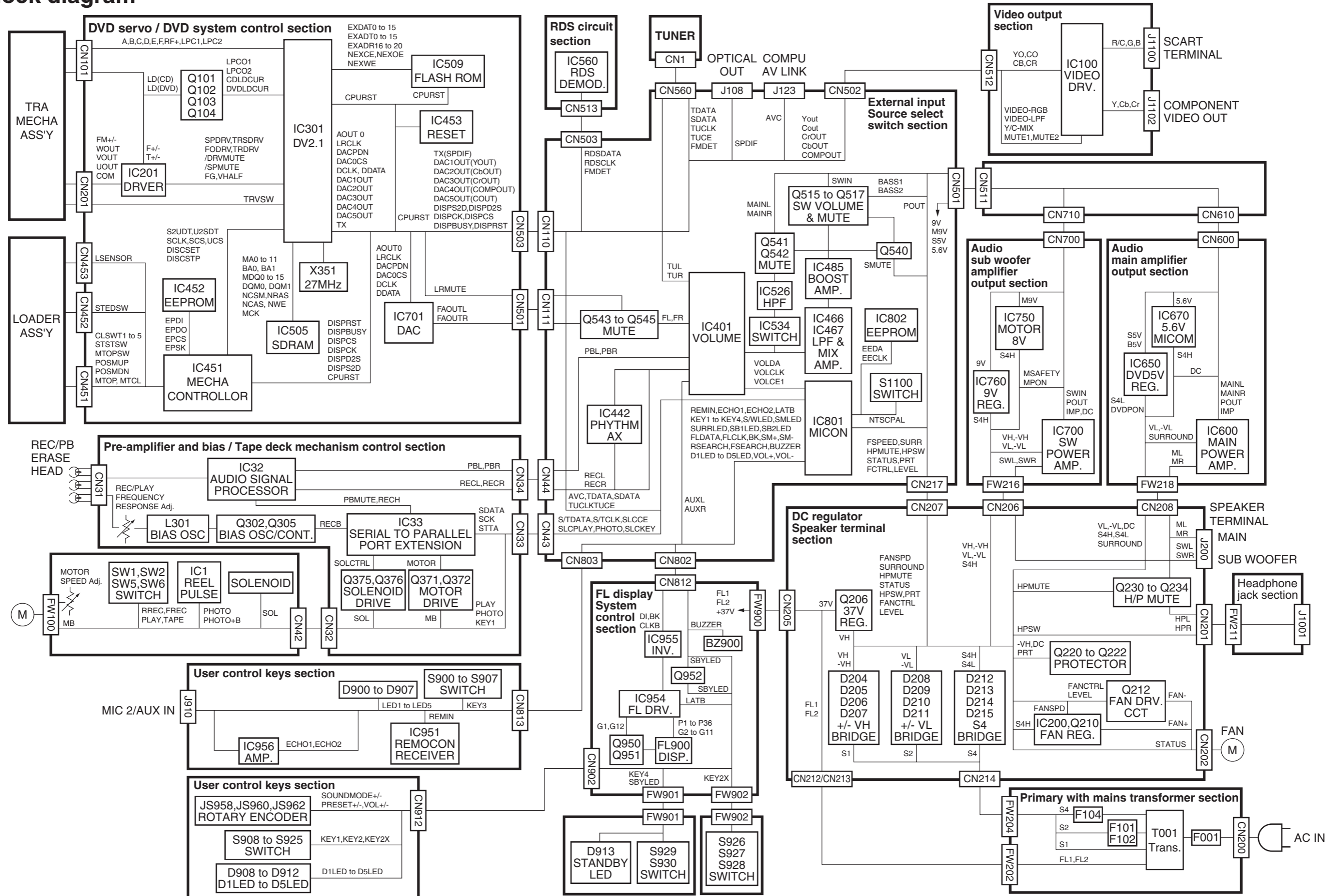
#### Contents

Block diagram .....	2-1
Standard schematic diagrams .....	2-2
Printed circuit boards .....	2-11 to 15

In regard with component parts appearing on the silk-screen printed side (parts side) of the PWB diagrams, the parts that are printed over with black such as the resistor (■), diode (▬) and ICP (●) or identified by the "△" mark nearby are critical for safety.

(This regulation does not correspond to J and C version.)

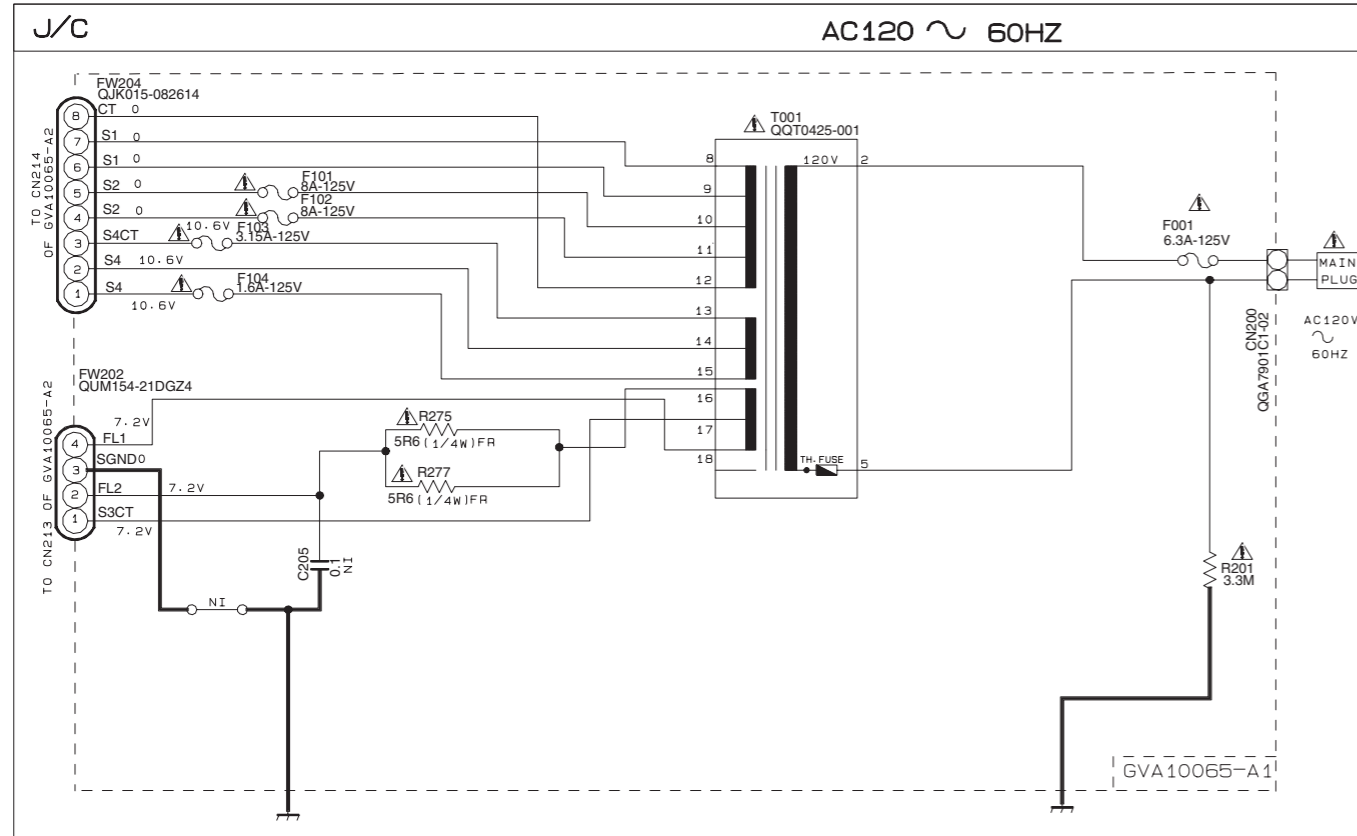
# Block diagram



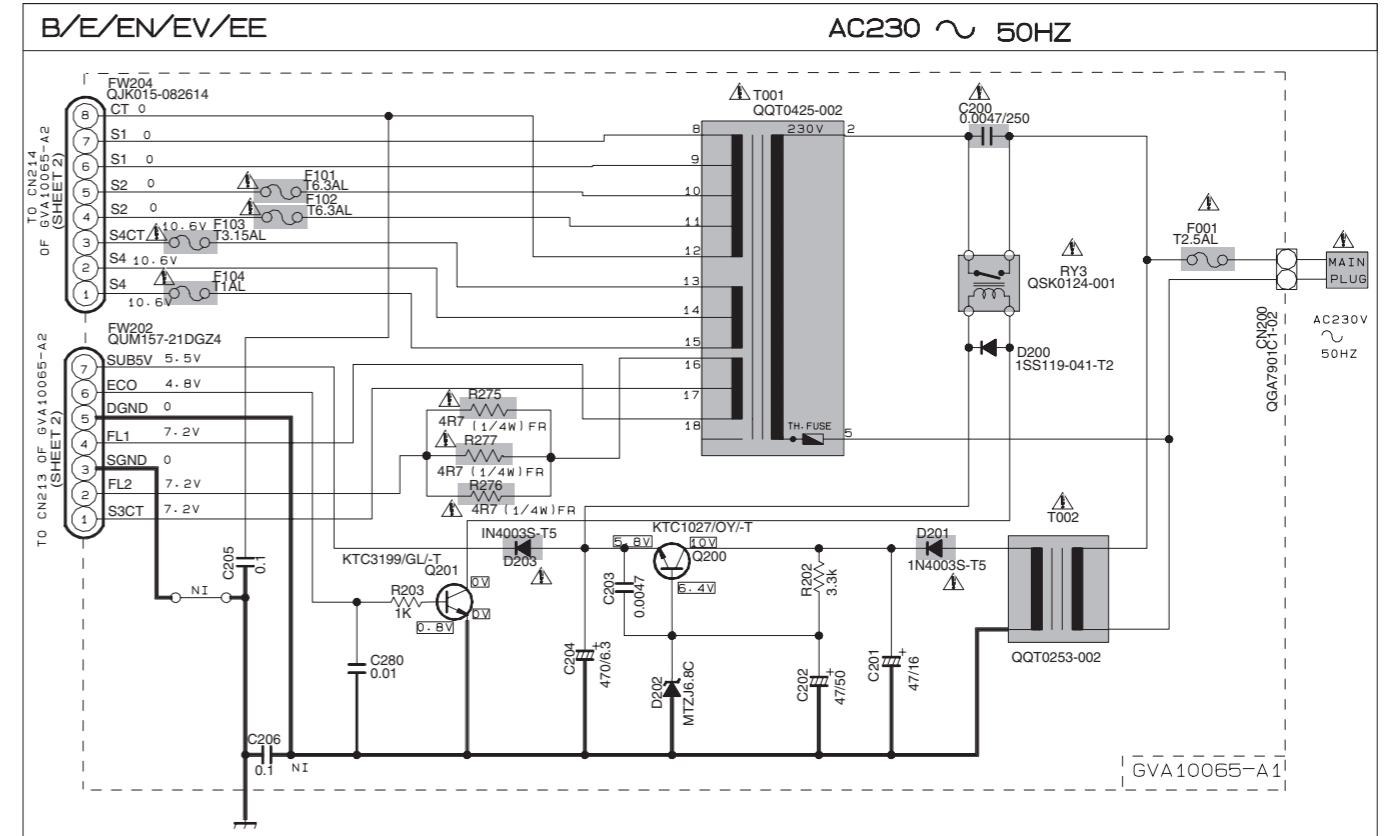
# Standard schematic diagrams

## Primary with main transformer section

POWER SUPPLY BLOCK



POWER SUPPLY BLOCK



### EXPLANATION OF OVERALL OF SCHEMA.

MODEL HX-GDB

SHEET NUMBER	CIRCUITS DESCRIPTION
1	.PRIMARY WITH MAINS TRANSFORMER
2	.DC REGULATORS/AUDIO OUTPUT
3	.EXTERNAL INPUT / SOURCE SELECTOR SWITCH
4	.FL DISPLAY / SYSTEM CONTROL / USER CONTROL KEYS
5	.VIDEO OUTPUT CIRCUIT
6	.RDS CIRCUIT
7	.DVD SERVO / DVD SYSTEM CONTROL
8	.DVD CHANGER MECHANISM CONTROL
9	.TAPE CIRCUITS SUCH AS PRE-AMP AND BIAS .TAPE DECK MECHANISM CONTROL

### VERSION CODES

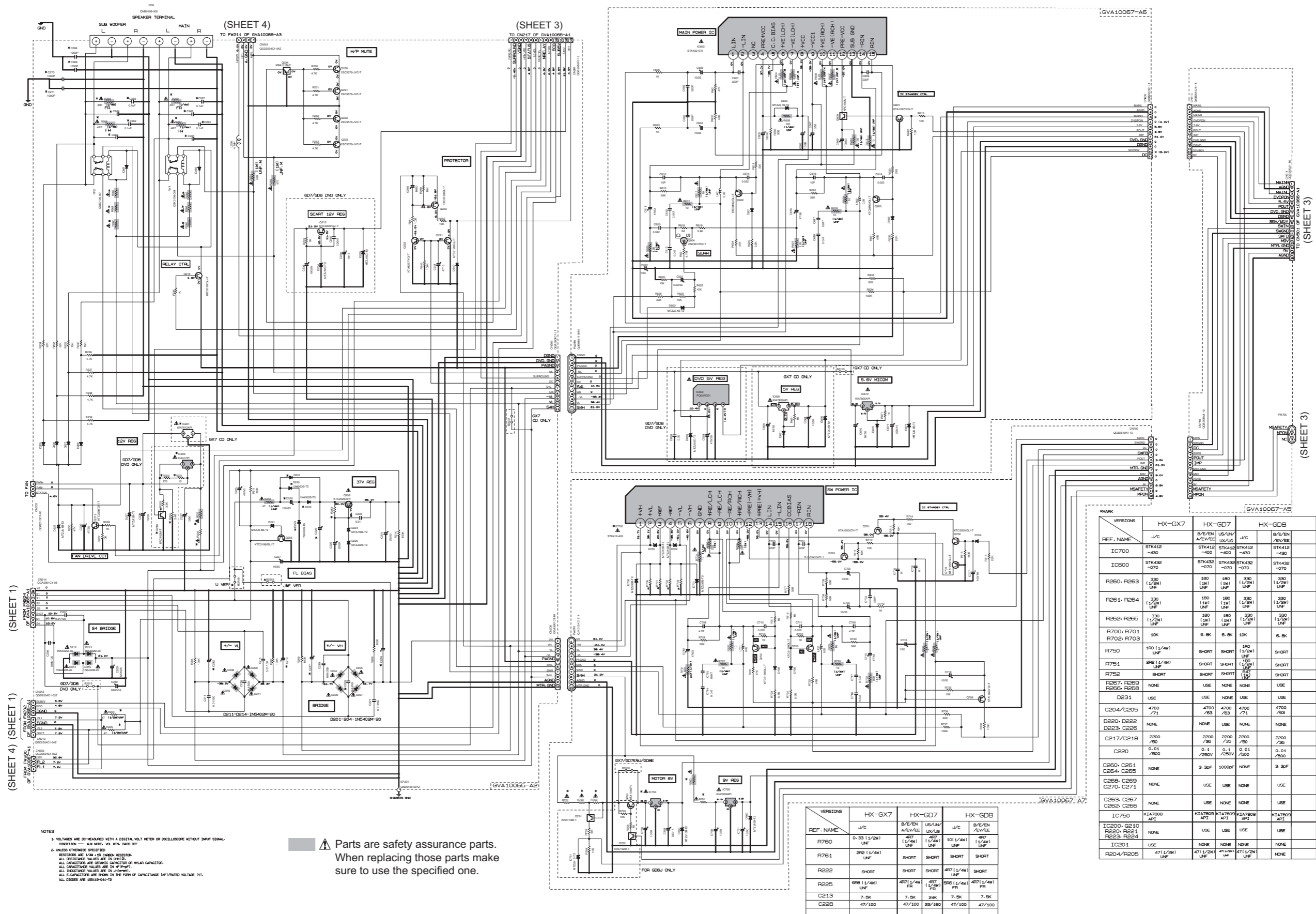
J : U.S.A  
C : CANADA  
B : U.K.  
E : CONTINENTAL EUROPE  
EN : NORTH EUROPE  
EV : EASTERN EUROPE  
EE : RUSSIA  
A : AUSTRALIA  
LW : SOUTH AMERICA EXCEPT ARGENTINA  
US : SINGAPORE  
UN : INDONESIA  
LX : SAUDI ARABIA

### NOTE

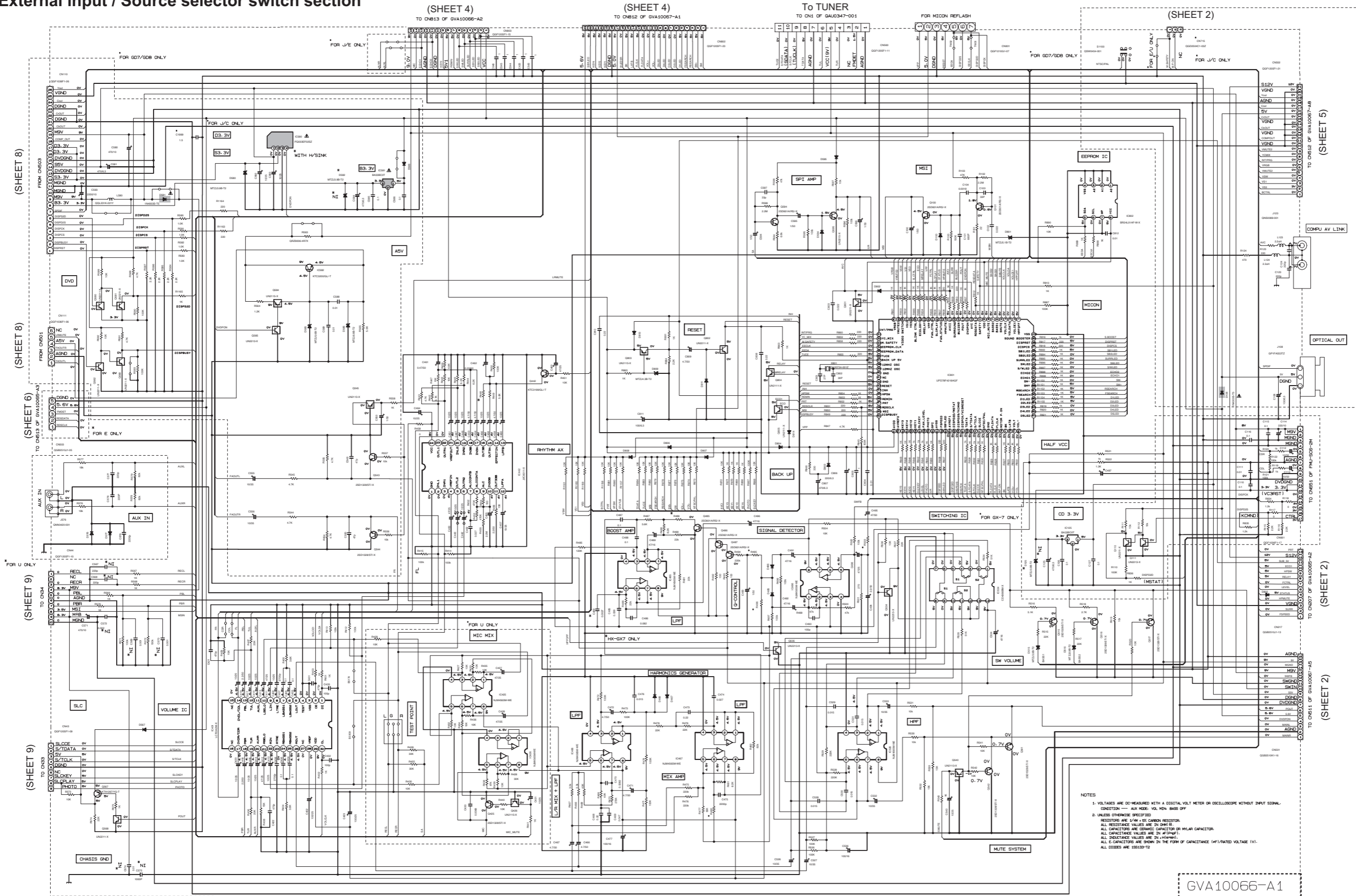
1. NI - COMPONENT NOT INSERT

Parts are safety assurance parts.  
When replacing those parts make sure to use the specified one.

DC regulators / Audio output section



External input / Source selector switch section

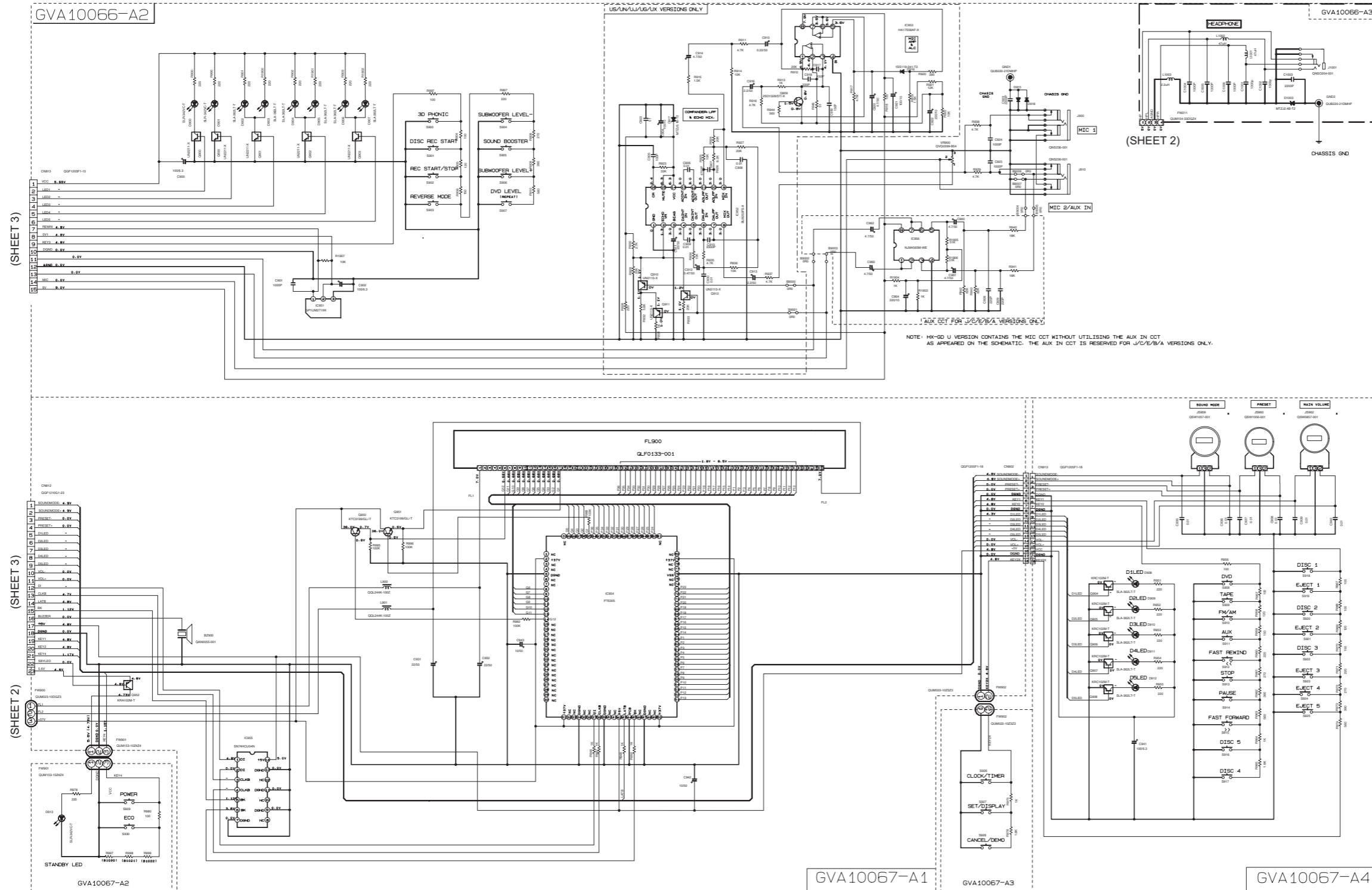


NOTES  
 1. VOLTAGES ARE MEASURED WITH A DIGITAL VOLT METER OR OSCILLOSCOPE WITHOUT INPUT SIGNAL.  
 CONDITION — AUX MODE: VOL. MIN. BASE OFF  
 2. UNLESS OTHERWISE SPECIFIED:  
 RESISTORS ARE 1/4W 1% CARBON RESISTOR.  
 ALL RESISTANCE VALUES ARE IN OHMS.  
 ALL CAPACITANCE VALUES ARE IN nF UNLESS OTHERWISE SPECIFIED.  
 ALL CAPACITANCE VALUES ARE IN nF UNLESS OTHERWISE SPECIFIED.  
 ALL E-CAPACITORS ARE SHOWN IN THE FORM OF CAPACITANCE (N/F/RATED VOLTAGE IV).  
 ALL CODES ARE 156130-12

MODEL	HX-GX7	HX-GD7	HX-GDB	MODEL	HX-GX7	HX-GD7	HX-GDB	MODEL	HX-GX7	HX-GD7	HX-GDB
VERSION	J/C	E SERIES	U SERIES	VERSION	J/C	E SERIES	U SERIES	VERSION	J/C	E SERIES	U SERIES
R480	1.0K	1.3K	1.3K	R495	6.8K	51K	51K	R489	11K	11K	11K
C487	220/16	220/16	330/16	R496	150K	180K	150K				
R503	5.6K	10K	10K	R448	4.7K	4.7K	4.7K				

Parts are safety assurance parts.  
 When replacing those parts make  
 sure to use the specified one.

FL display / System control / User control keys section

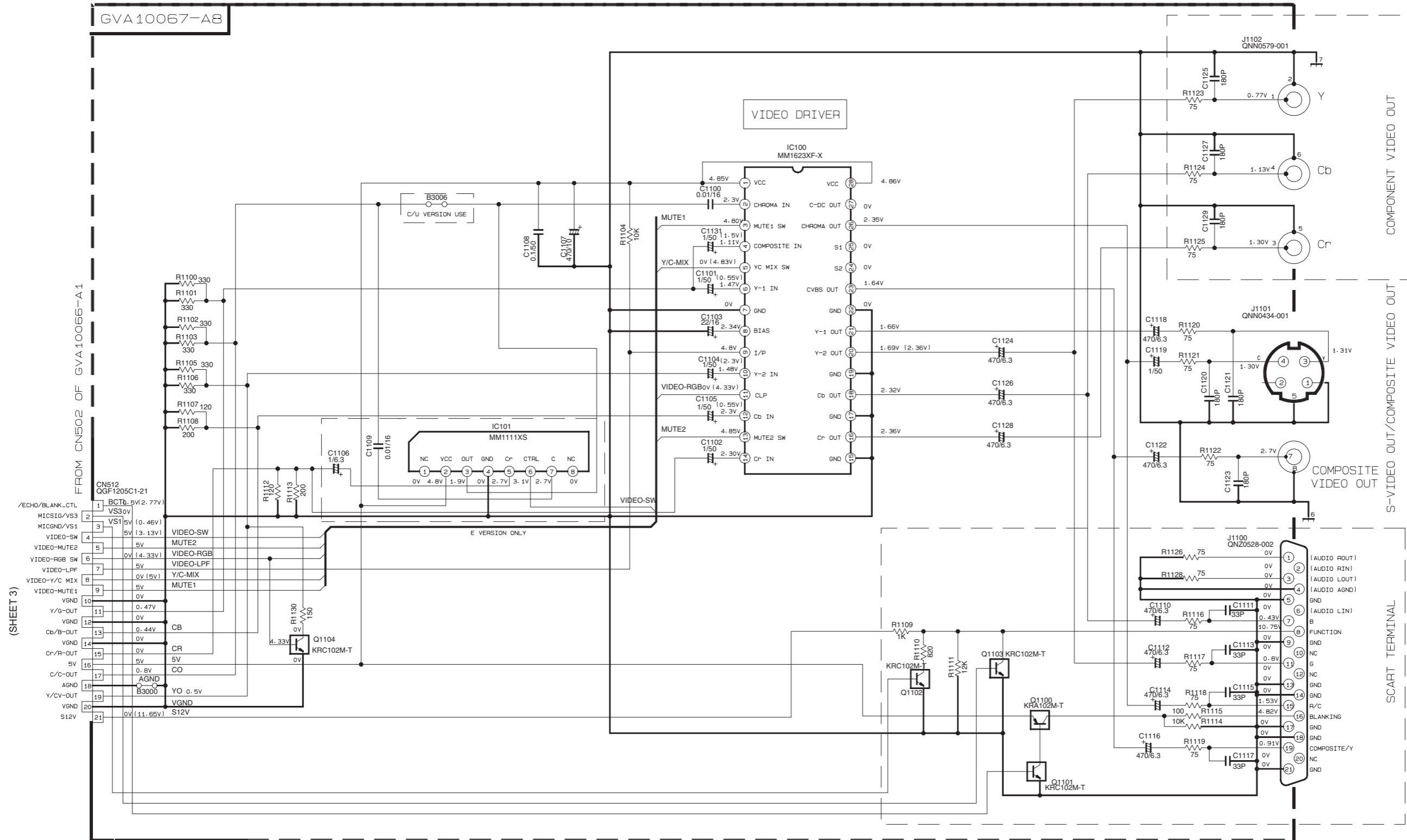


NOTE: HK-00 U VERSION CONTAINS THE MIC OCT WITHOUT UTILISING THE AUX IN OCT AS APPEARED ON THE SCHEMATIC. THE AUX IN OCT IS RESERVED FOR J/C/E/B/A VERSIONS ONLY.

GDB						G07						G07								
REF. NO.	GDB	J/C	B/E/EN/VE/EE	US/UN/UJ	UK	REF. NO.	G07	J/C	B/E/EN/VE/EE	US/UN/UJ	A	UK	REF. NO.	G07	J/C	UK	B/E/EN/VE/EE	US/UN/UJ	UK	
R997(B1020)	100	100		220	220	R997(B1020)	430	430	820	2.7K	2.7K	10K	R997(B1020)	100	100	220	220	430	430	620
R998(B1021)	B/W	120		220	120	R998(B1021)	430	430	110	110	100		R998(B1021)	B/W	120	120	120	120	430	430
R999(B1022)	B/W	B/W	B/W	220	270	R999(B1022)	390	390	560	B/W	1.8K	110	R999(B1022)	B/W/B/W	B/W	220	270	390	390	560

- NOTES
- VOLTAGES ARE DC-MEASURED WITH A DIGITAL VOLT METER AUX MODE. VOL MIN. BASS OFF CONDITION — OR OSCILLOSCOPE WITHOUT INPUT SIGNAL.
  - UNLESS OTHERWISE SPECIFIED  
RESISTORS ARE 1/4W ± 5% CARBON RESISTOR.  
ALL RESISTANCE VALUES ARE IN OHM(Ω).  
ALL CAPACITORS ARE CERAMIC CAPACITOR OR MYLAR CAPACITOR.  
ALL CAPACITANCE VALUES ARE IN #F(P=PF).  
ALL INDUCTANCE VALUES ARE IN #H(M=MH).  
ALL E-CAPACITORS ARE SHOWN IN THE FORM OF CAPACITANCE (#F)/RATED VOLTAGE (V).  
ALL DIODES ARE 1SS119-041-T2.  
ALL TACT SWITCH ARE QSN0674-001Z  
NI —> COMPONENT NOT INSERT  
SHORT —> REPLACE BY BUS WIRE
  - CN90 ONLY USE FOR FLASH MICOM

Video output circuit section



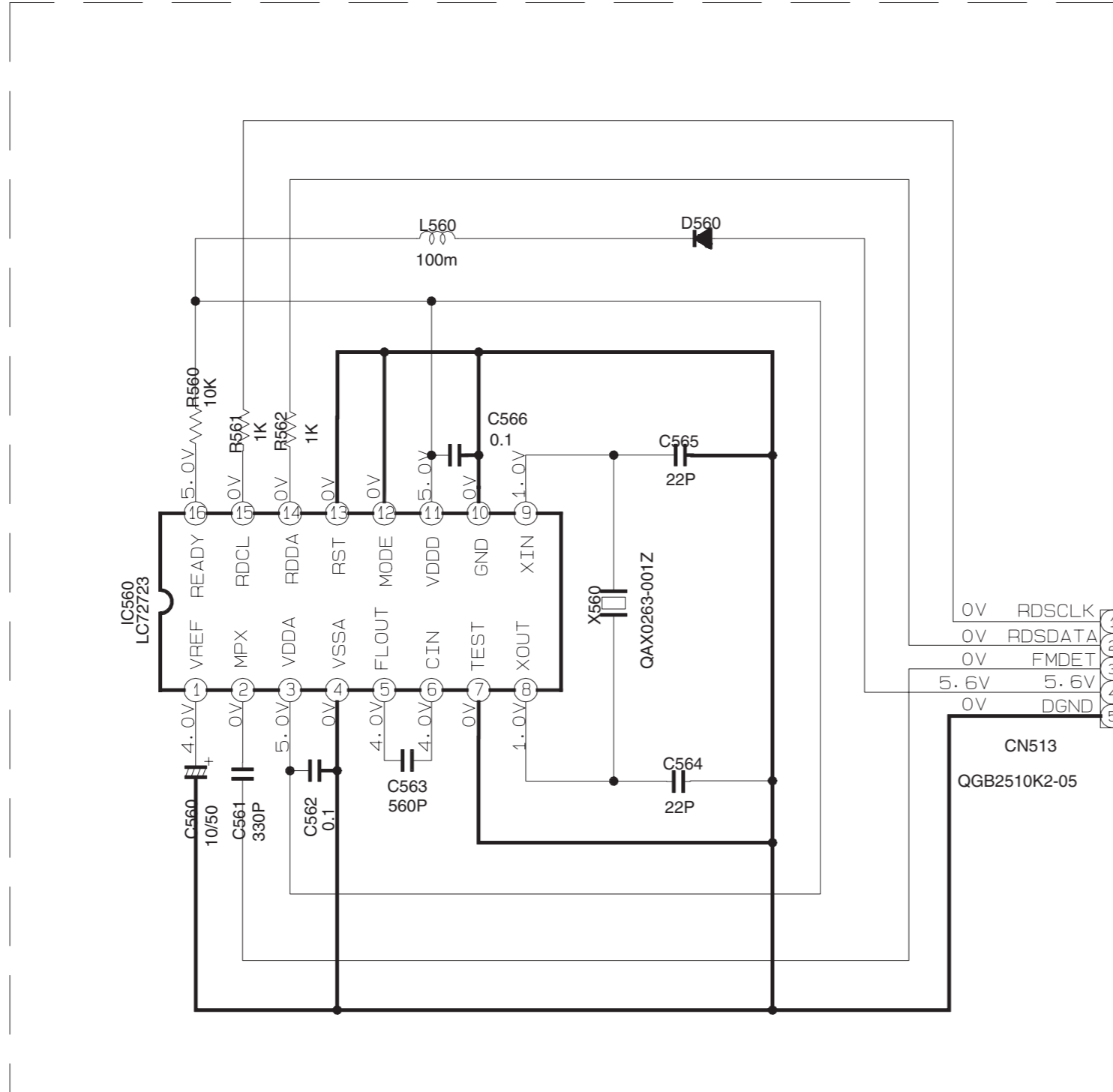
**NOTES**

- VOLTAGES ARE DC-MEASURED WITH A DIGITAL VOLTMETER OR OSCILLOSCOPE WITHOUT INPUT SIGNAL CONDITION -- PLAY DVD THEN STOP. VOL MIN. BASS OFF
- UNLESS OTHERWISE SPECIFIED  
RESISTORS ARE 1/4W. 5% CARBON RESISTOR  
ALL RESISTANCE VALUES ARE IN OHM  
ALL CAPACITORS ARE CERAMIC CAPACITOR OR MYLAR CAPACITOR  
ALL CAPACITANCE VALUES ARE IN UF (P = pF)  
ALL INDUCTANCE VALUES ARE IN H (m=μH)  
ALL E-CAPACITORS ARE SHOWN IN THE FORM OF CAPACITANCE (uF)/RATED VOLTAGE(V)  
ALL DIODES ARE 1SS119-041-T2
- THE VOLTAGES SHOWN ARE FOR ALL VERSION EXCEPT FOR E-VERSION. E VERSION VOLTAGES ARE SHOWN IN ( ) FORM IF THEY DIFFER FROM THE COMMON VOLTAGES



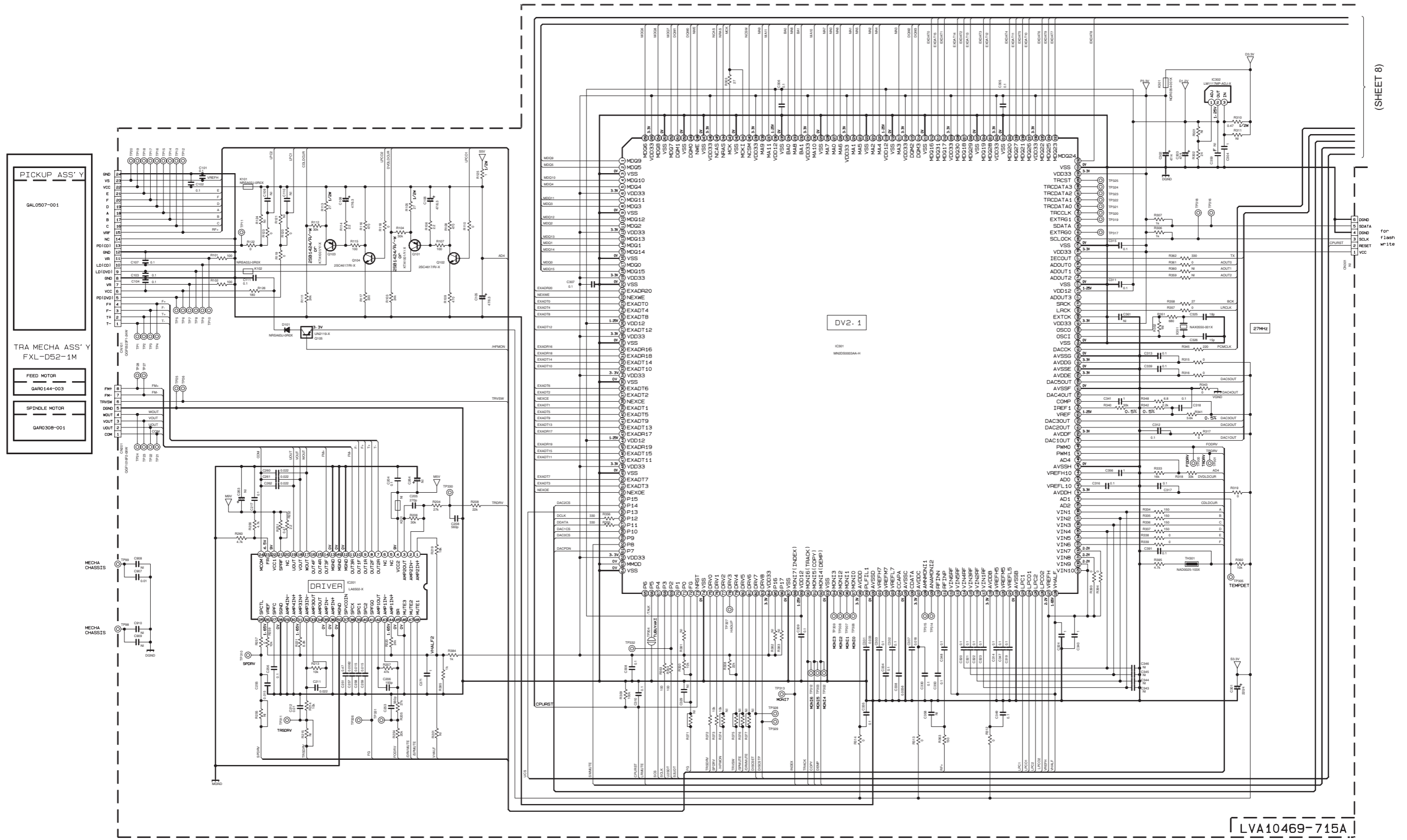
■ RDS circuit section

\*  
FOR EUROPE ONLY



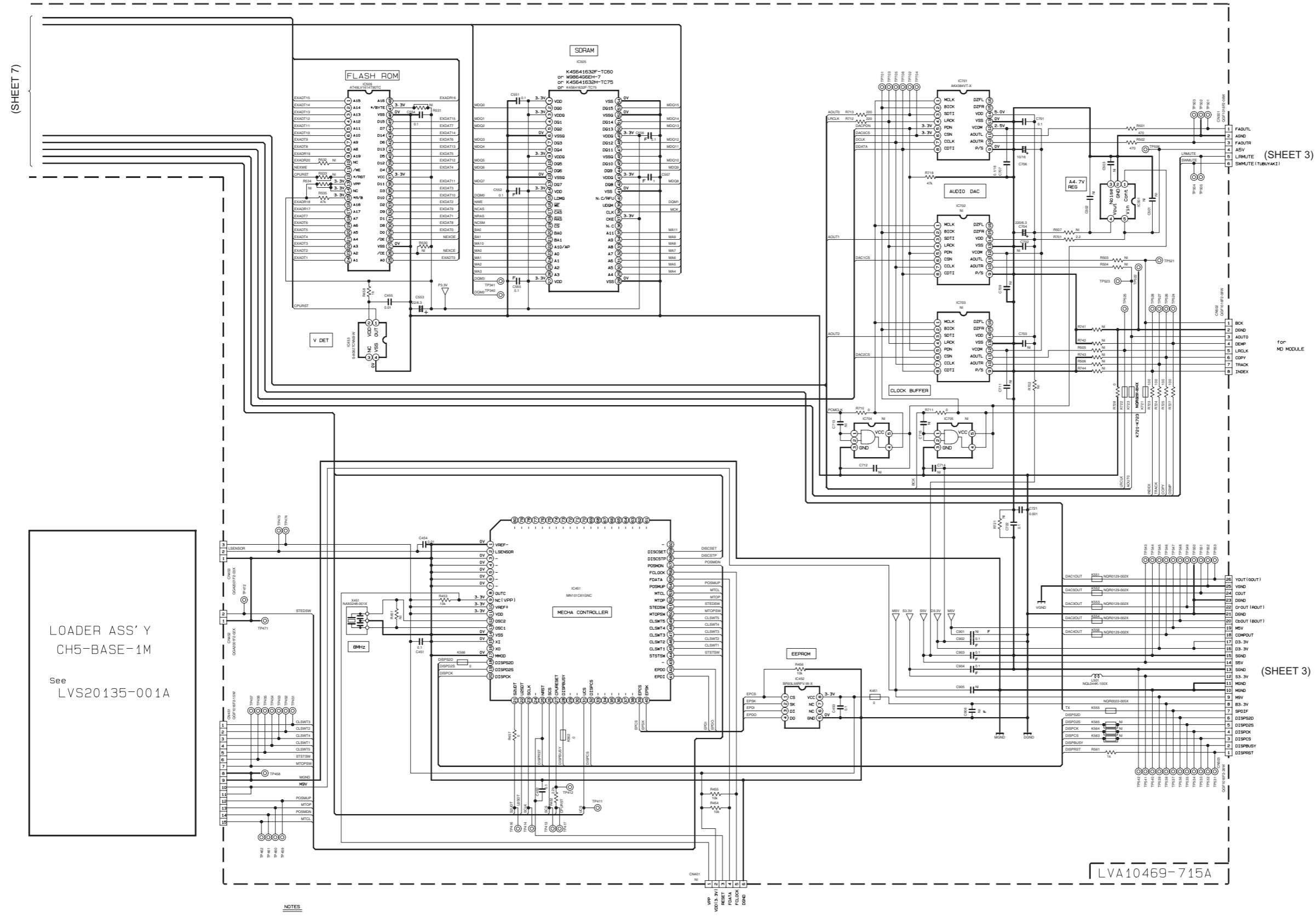
TO CN503 OF GVB10066-A1  
(SHEET 3)

DVD servo / DVD system control section



(SHEET 8)

■ DVD changer mechanism control section



(SHEET 7)

(SHEET 3)

for MD MODULE

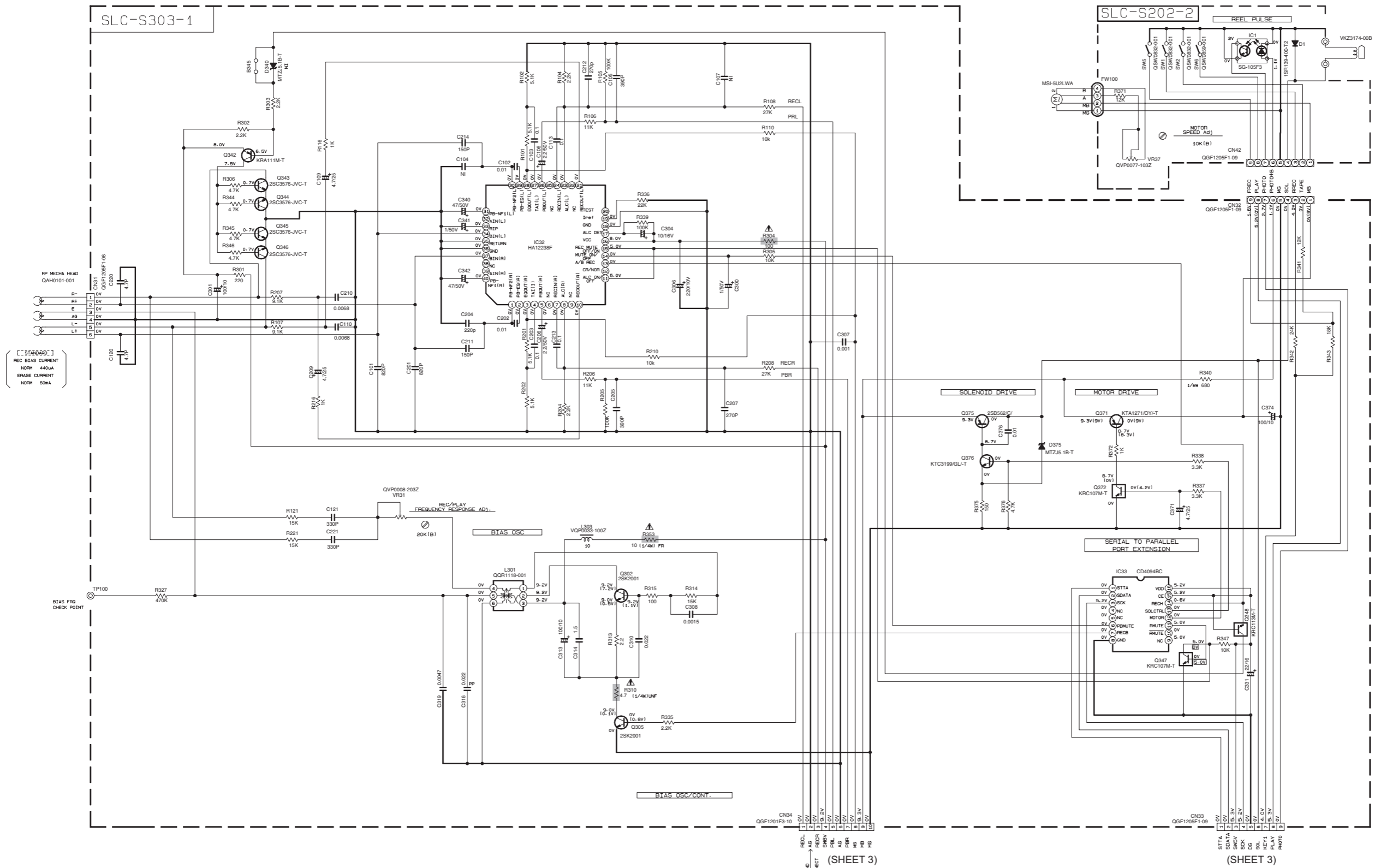
(SHEET 3)

LOADER ASS'Y  
CH5-BASE-1M  
See  
LVS20135-001A

LVA10469-715A

- NOTES**
- VOLTAGES ARE DC-MEASURED WITH A DIGITAL VOLT METER WITHOUT INPUT SIGNAL.  
CONDITION --- A DVD disc in Tray1; STOP mode
  - UNLESS OTHERWISE SPECIFIED.  
ALL RESISTORS ARE 1/10W ±5% METAL GLAZE RESISTOR, OR 0.5X METAL GLAZE RESISTOR.  
ALL CAPACITORS ARE 50V ±20V ±5V ±10V OR 6.3V CERAMIC CAPACITOR.  
ALL RESISTANCE VALUES ARE IN OHM(Ω).  
ALL CAPACITANCE VALUES ARE IN pF(pf).  
ALL E-CAPACITORS ARE SHOWN IN THE FORM OF CAPACITANCE(μF)/RATED VOLTAGE (V).  
ALL INDUCTANCE VALUES ARE IN μH(μHMH).
  - NI STANDS FOR NOT INSERTED PARTS.
4. DIGITAL TRANSISTOR
- UN2159-X =
- for flash writer

■ Tape circuits such as pre-amplifier and bias / Tape deck mechanism control section



NOTES

1. VOLTAGES ARE DC-MEASURED WITH A DIGITAL VOLT METER OR OSCILLOSCOPE WITHOUT INPUT SIGNAL. CONDITION : MECHA STOP MODE

2. UNLESS OTHERWISE SPECIFIED, RESISTORS ARE 1/10W ±5% METAL GLAZE RESISTOR. ALL RESISTANCE VALUES ARE IN OHM(S). ALL CAPACITORS ARE CERAMIC CAPACITOR OR MYLAR CAPACITOR. ALL CAPACITANCE VALUES ARE IN #F(PPF). ALL INDUCTANCE VALUES ARE IN #H(MHF). ALL CAPACITORS ARE SHOWN IN THE FORM OF CAPACITANCE (#F)/RATED VOLTAGE (V). POLYPROPYLENE CAPACITOR

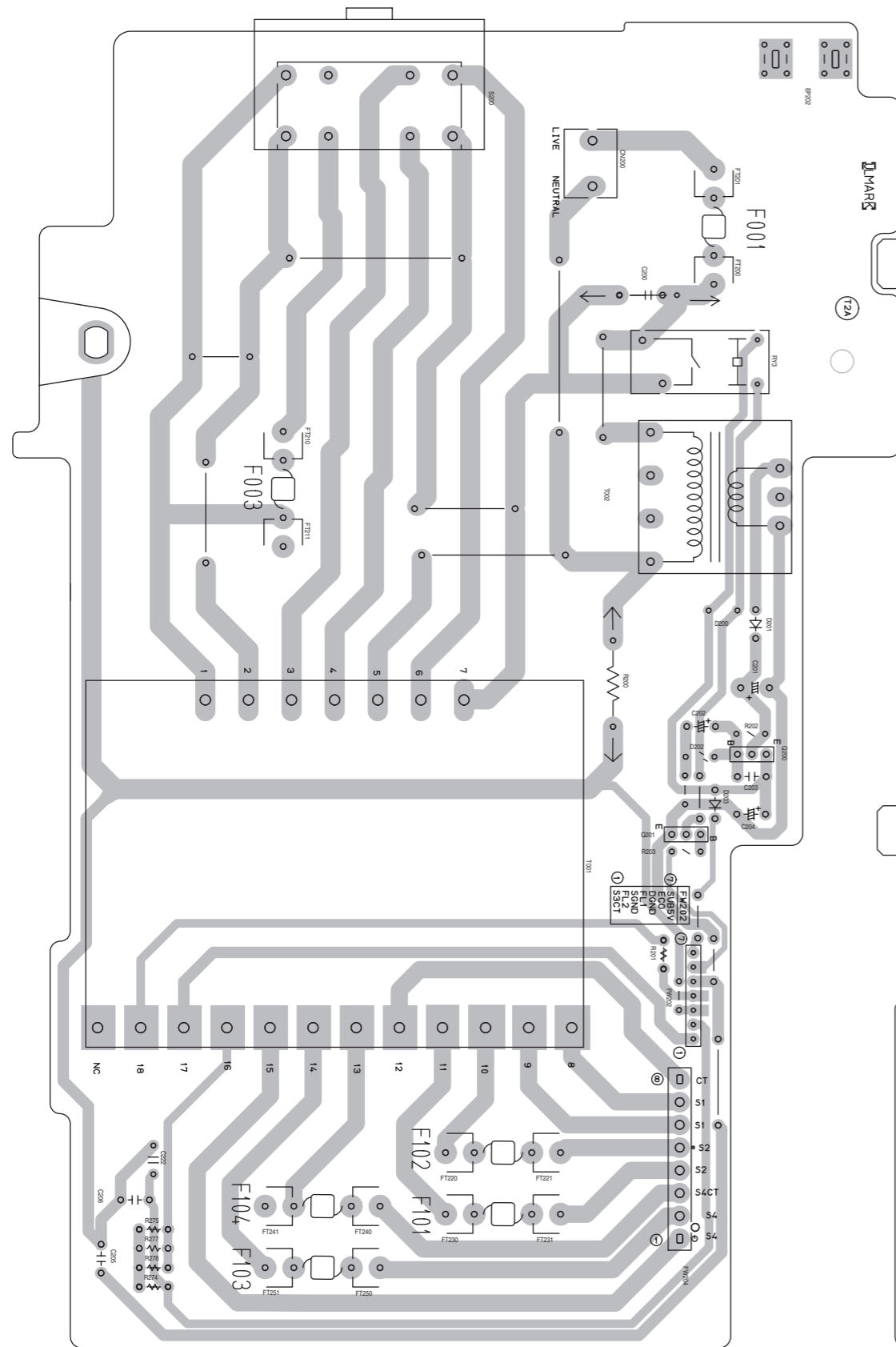
(SHEET 3)

(SHEET 3)

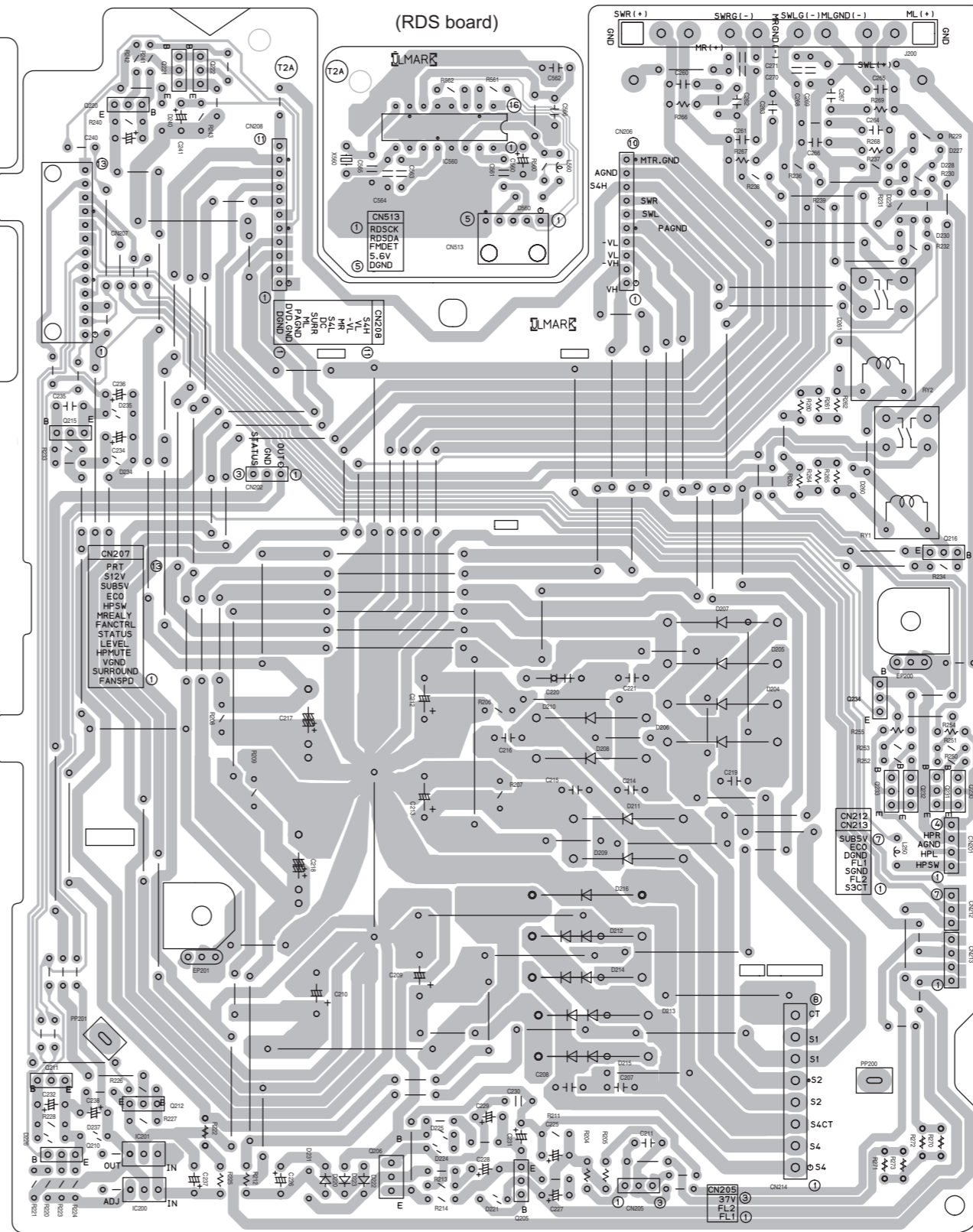
▲ Parts are safety assurance parts. When replacing those parts make sure to use the specified one.

# Printed circuit boards

## ■ Power board

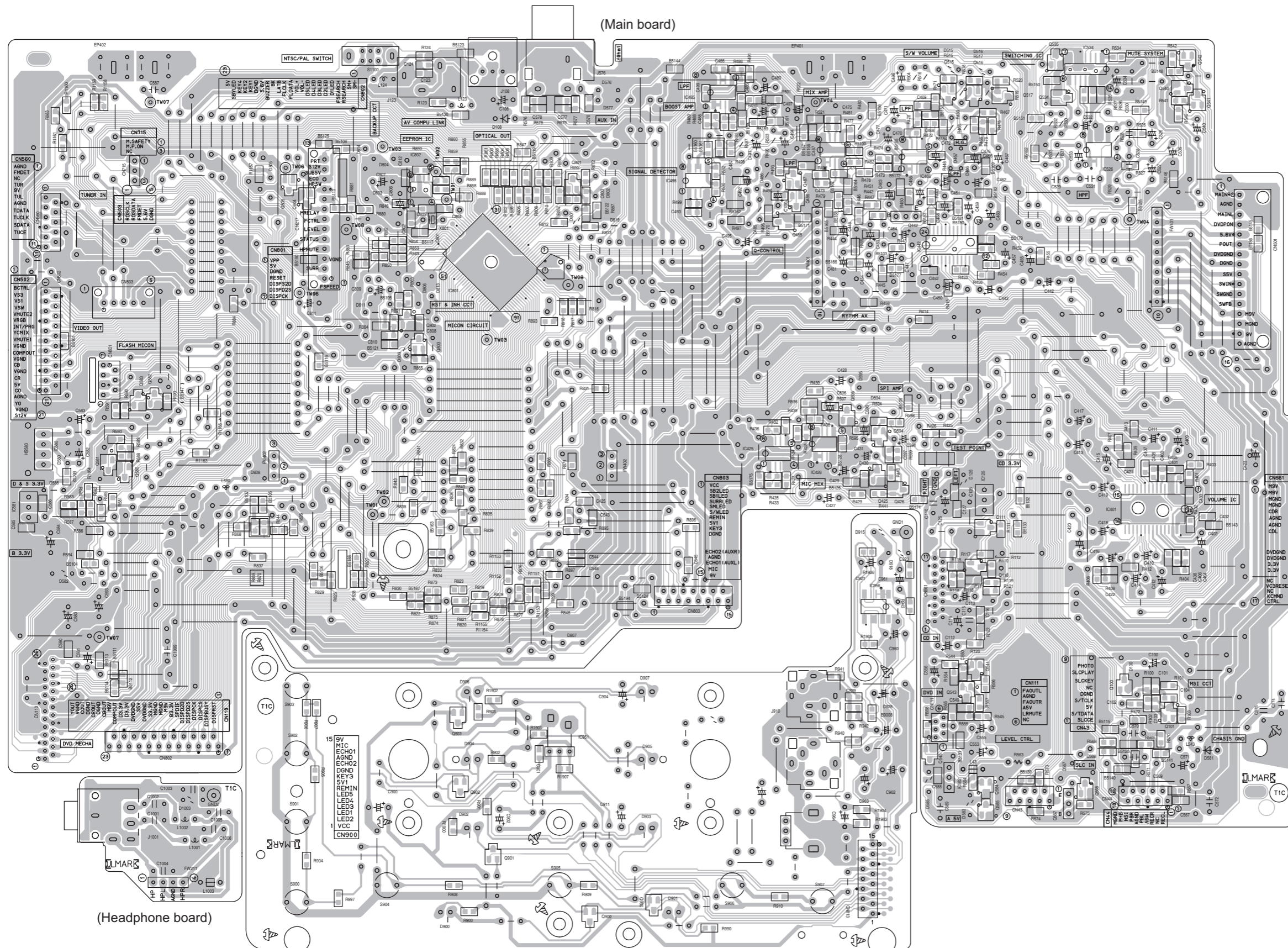


(Primary board)



(Bridge board)

■ Input board



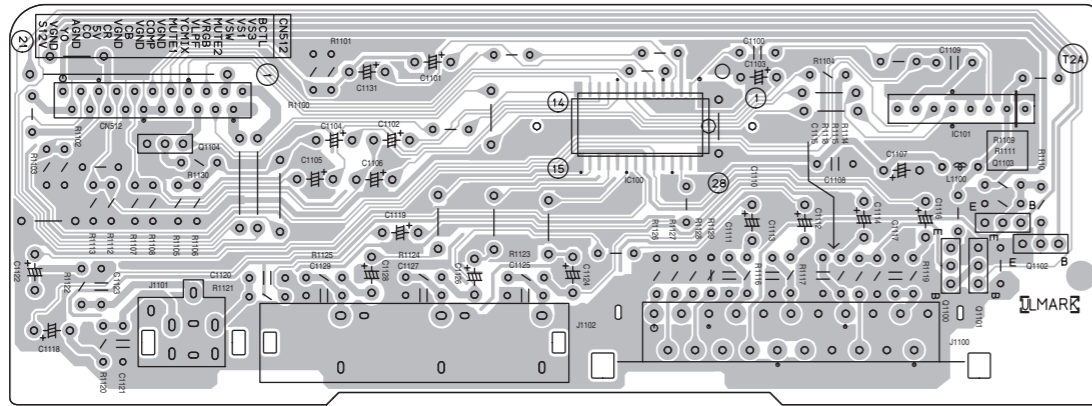
(Main board)

(Headphone board)

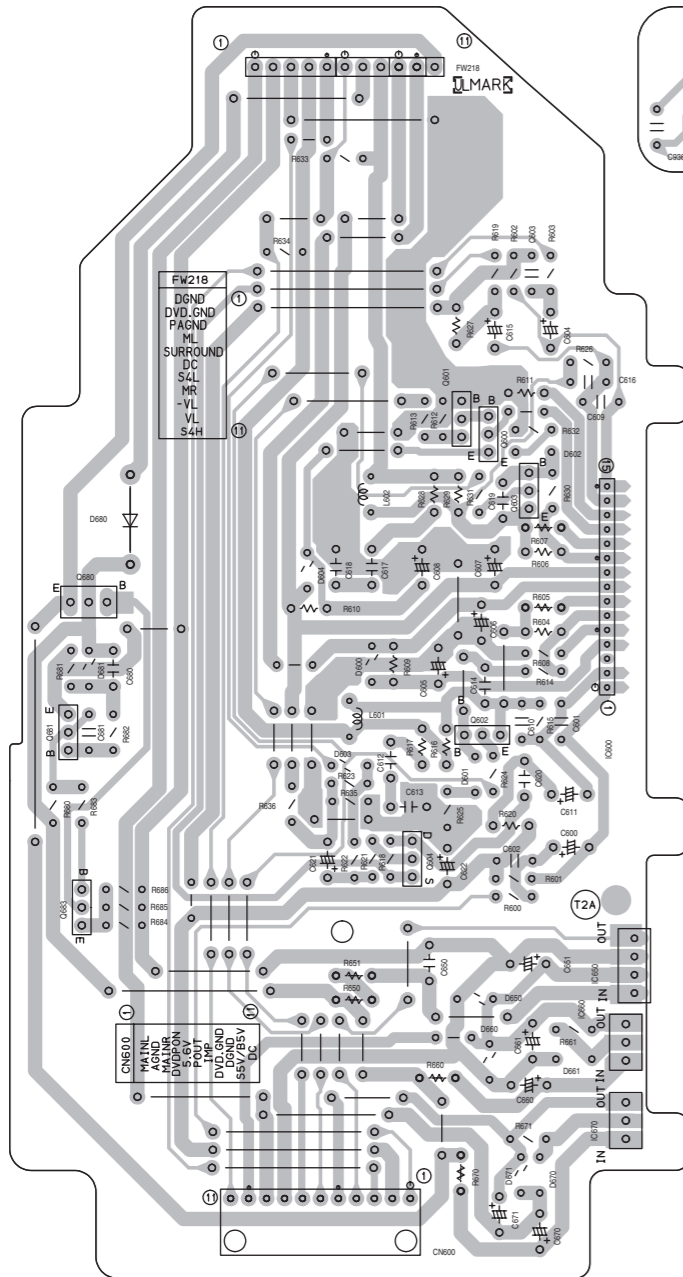
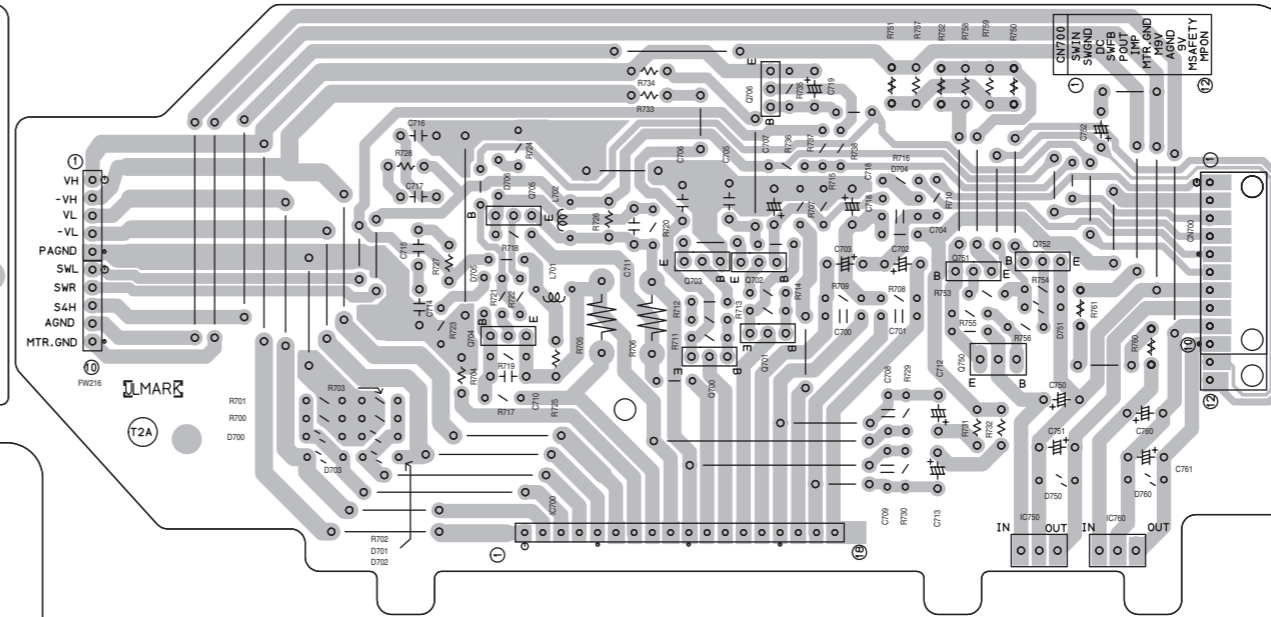
(Microphone board)

■ Front board

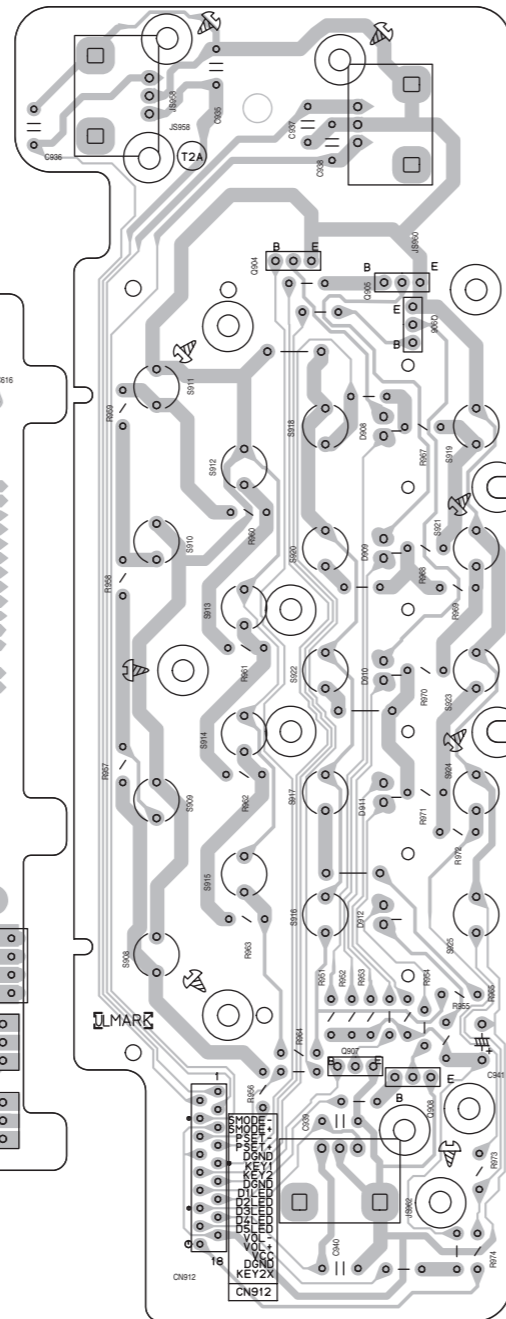
(Video board)



(Subwoofer amplifier board)

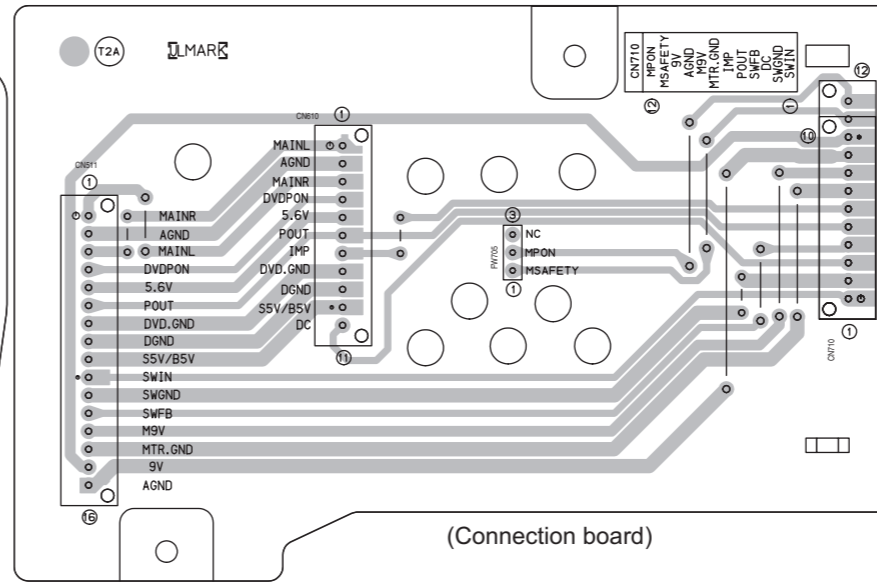
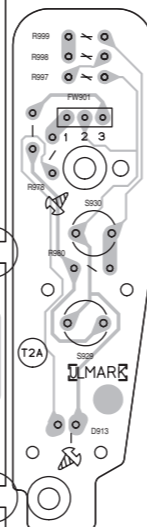


(Main amplifier board)



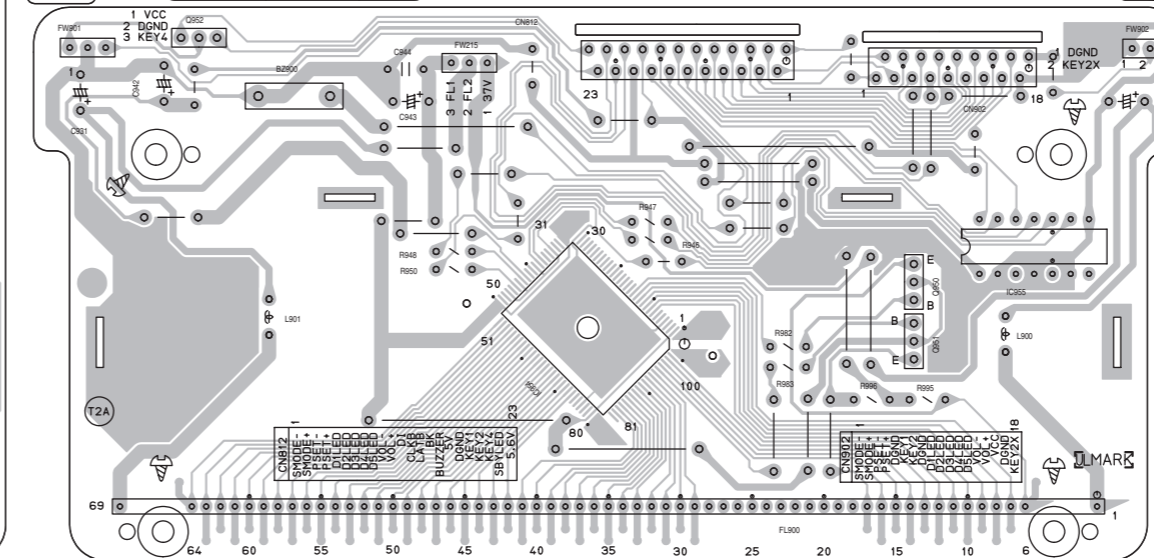
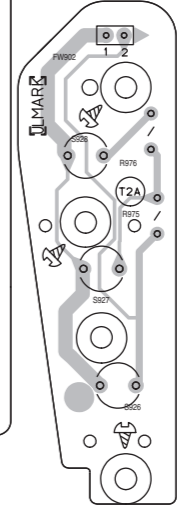
(Encoder board)

(Standby LED board)



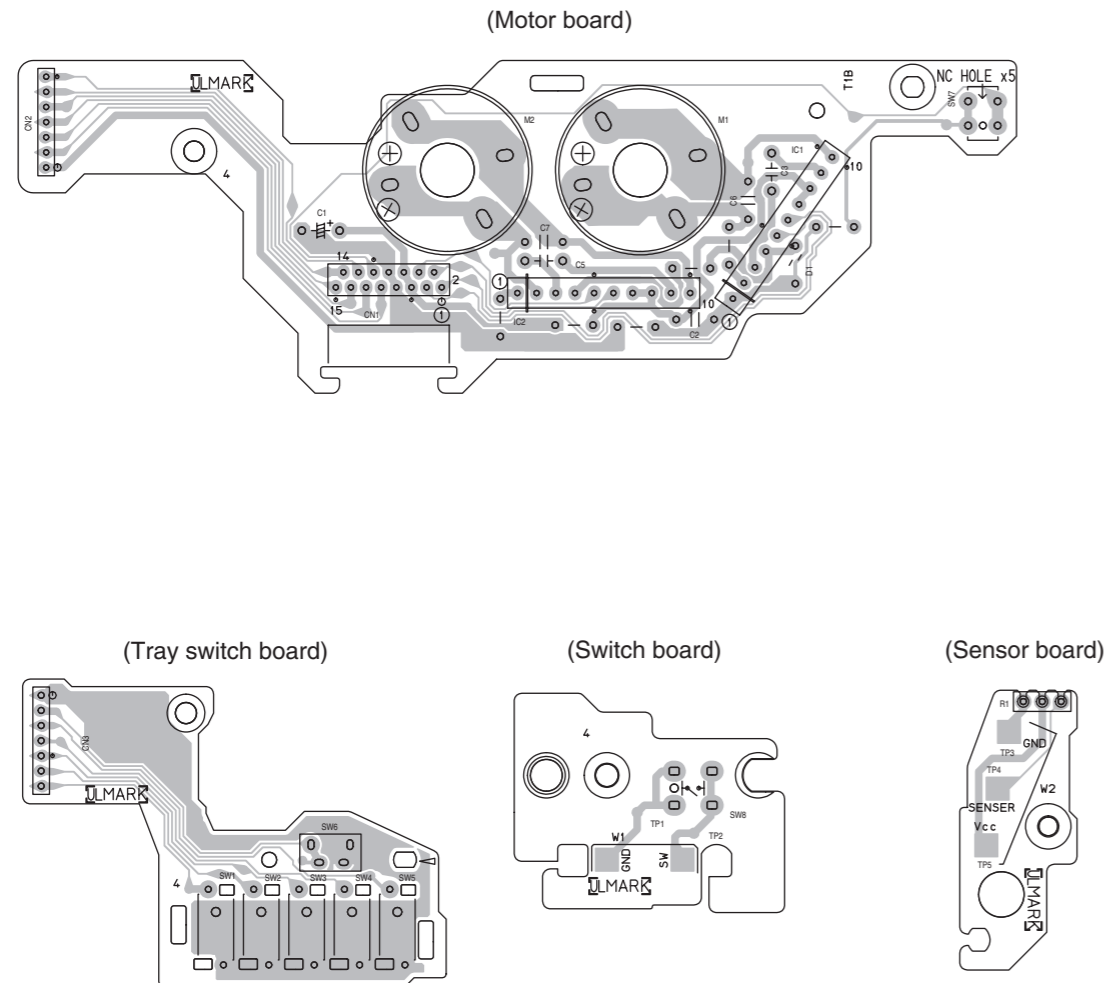
(Connection board)

(Switch board)

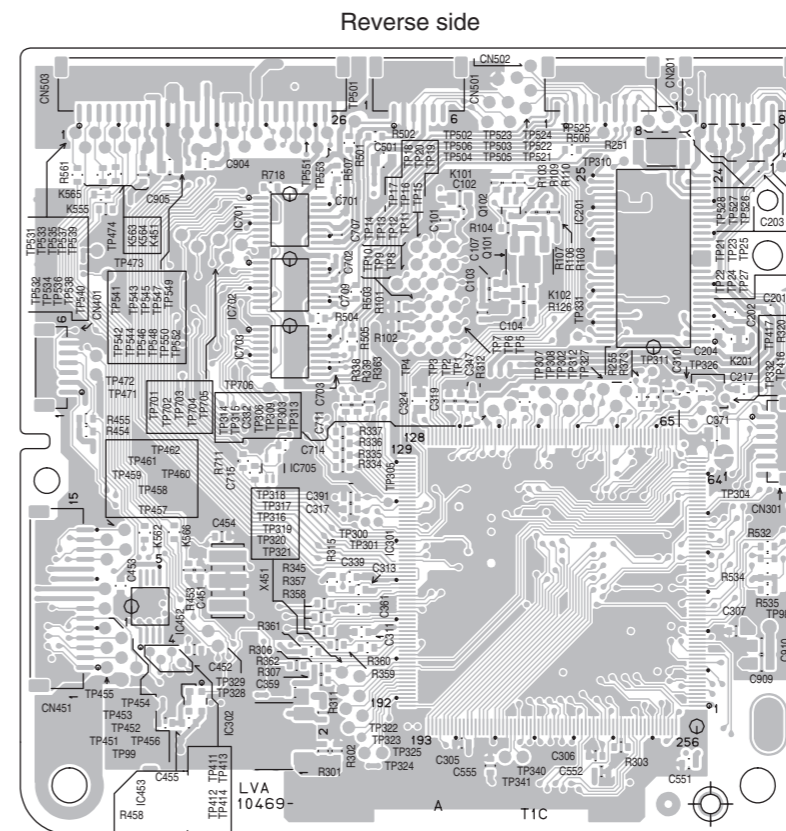
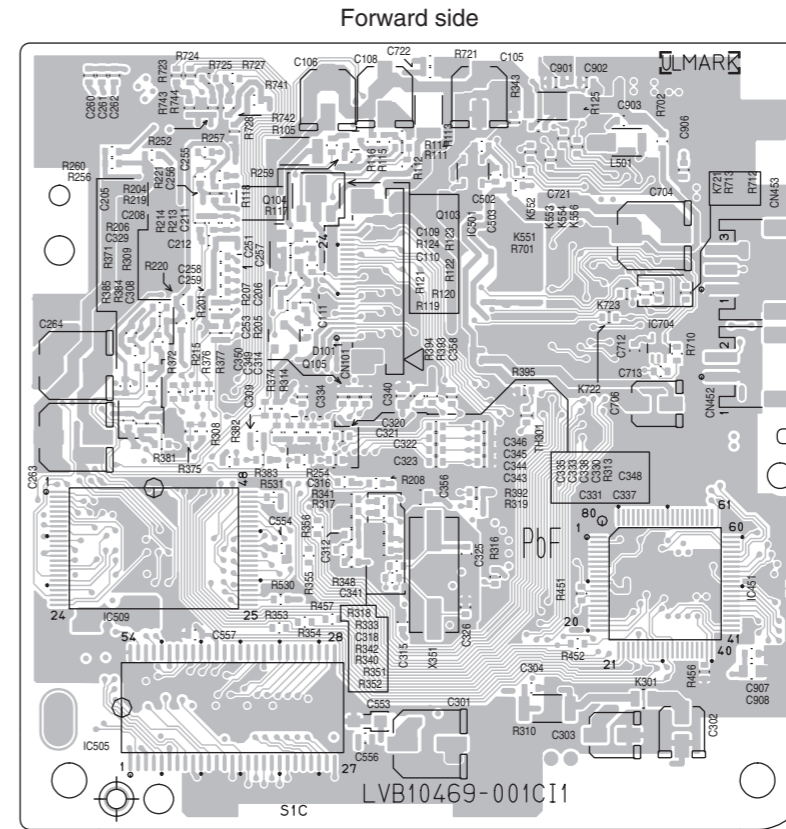


(FL board)

■ Loading board

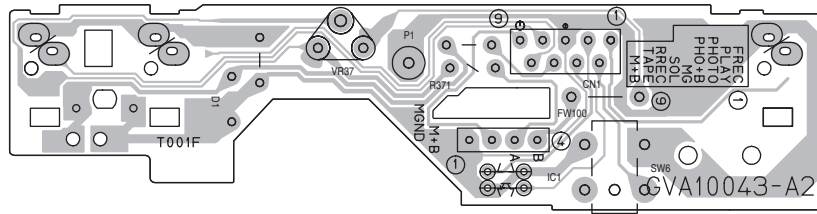


■ DVD servo board

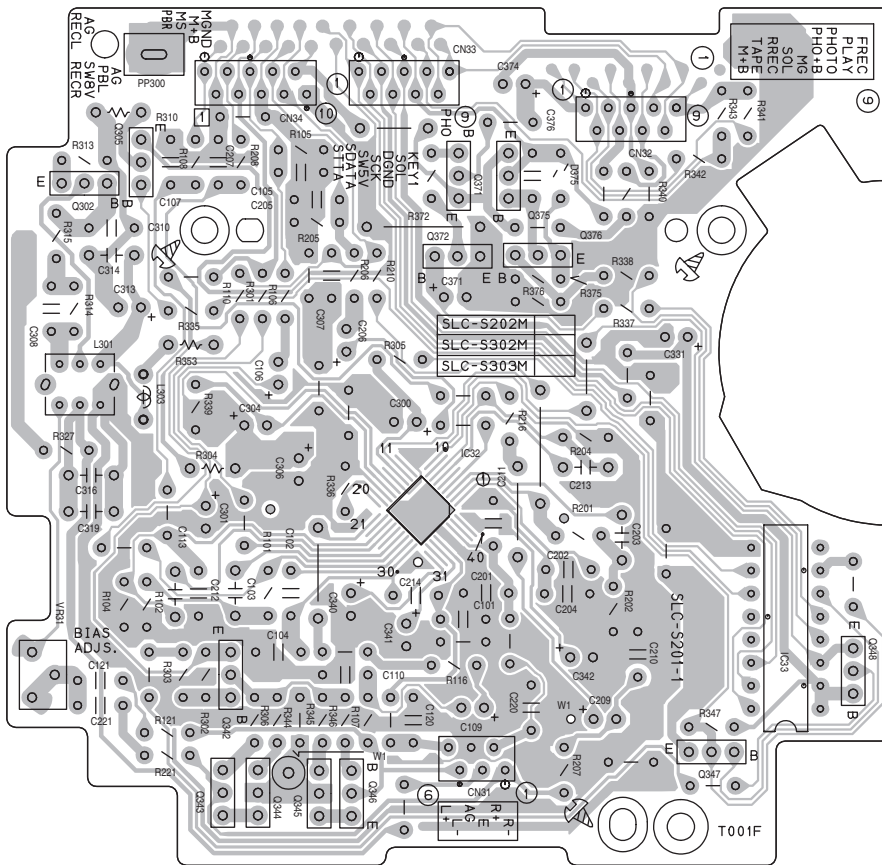




## ■ Cassette switch board



## ■ Head amplifier board



**JVC**

Victor Company of Japan, Limited

AV & MULTIMEDIA COMPANY AUDIO/VIDEO SYSTEMS CATEGORY 10-1, 1chome, Ohwatari-machi, Maebashi-city, 371-8543, Japan

(No.MB277SCH)



Printed in Japan  
WPC