

# JVC

# SCHEMATIC DIAGRAMS

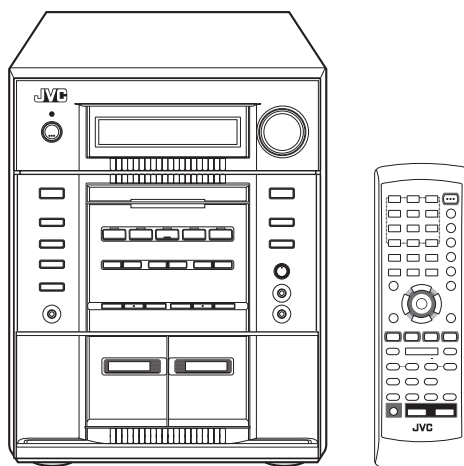
## COMPACT COMPONENT SYSTEM

### MX-JD8

CD-ROM No.SML200407

#### Area suffix

US ----- Singapore  
UW ----- Brazil, Mexico, Peru  
UX ----- Saudi Arabia  
UN ----- Asean



CA-MXJD8



**AV COMPU LINK EXTENDED SUPER BASS**

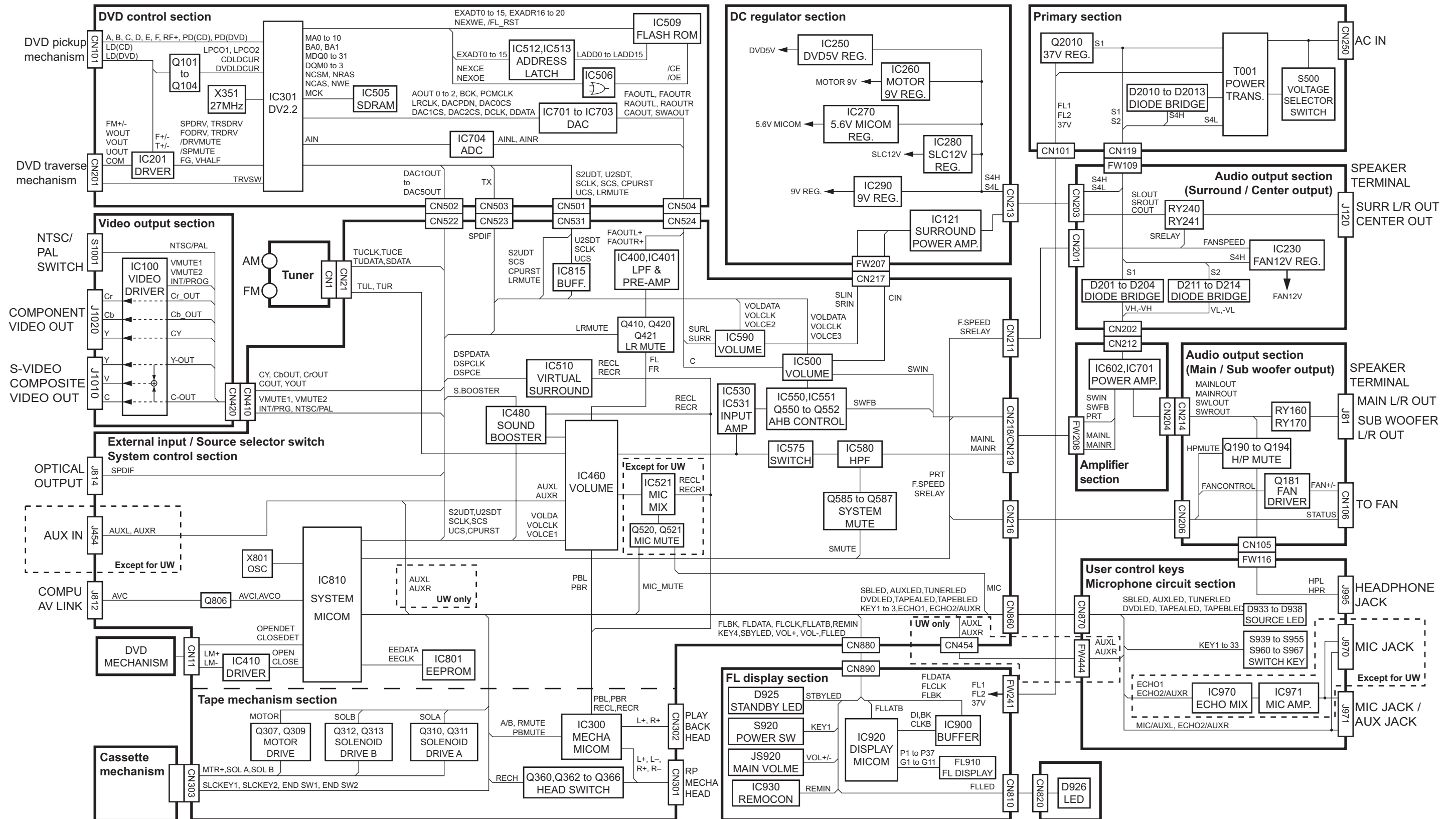
#### Contents

Block diagram .....	2-1
Standard schematic diagrams .....	2-2
Printed circuit boards .....	2-9 to 12

In regard with component parts appearing on the silk-screen printed side (parts side) of the PWB diagrams, the parts that are printed over with black such as the resistor (■), diode (▬) and ICP (●) or identified by the "⚠" mark nearby are critical for safety.

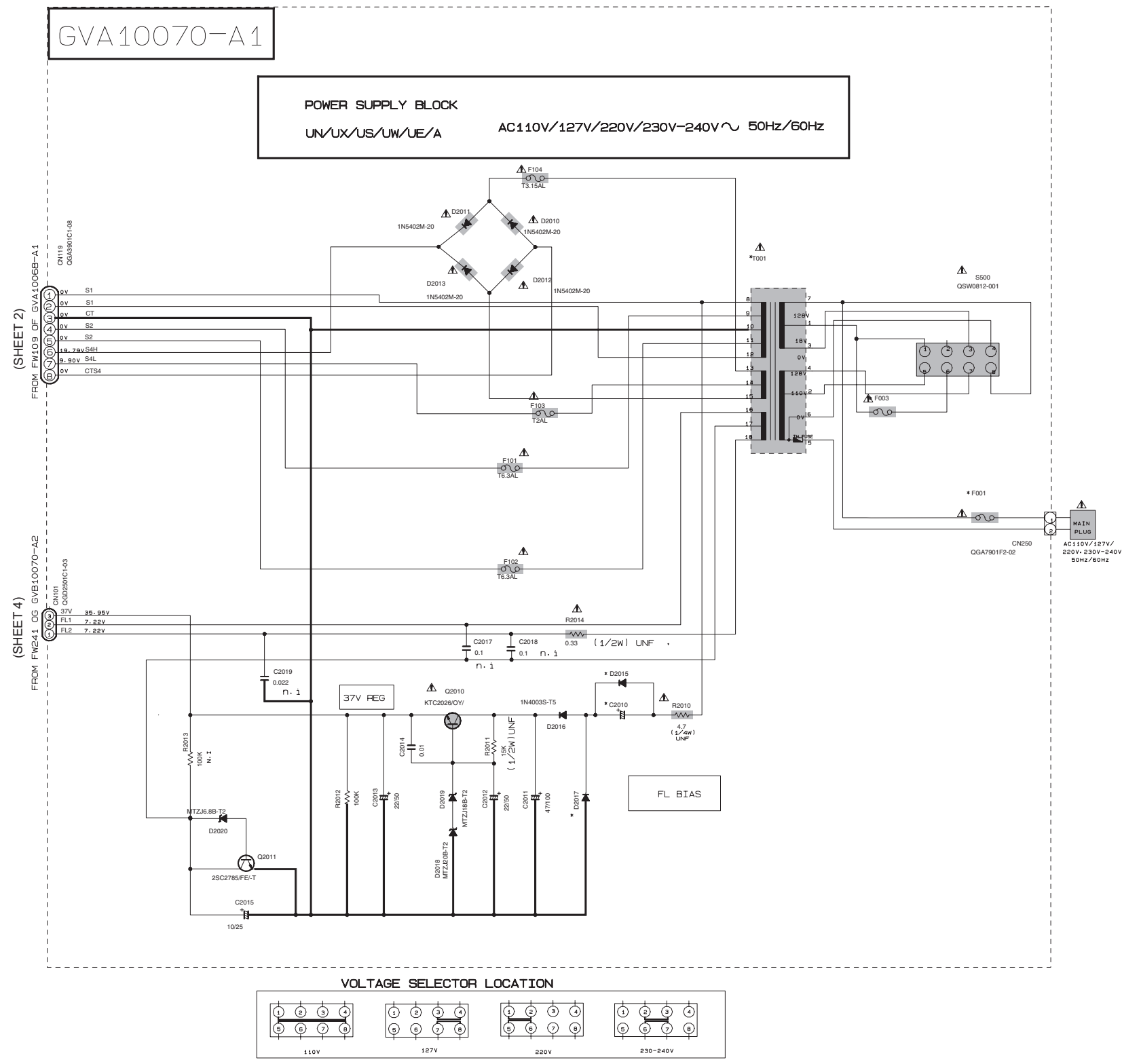
(This regulation does not correspond to J and C version.)

# Block diagram



# Standard schematic diagrams

## ■ Primary board with main transformer section



### EXPLANATION OF OVERALL SCHEMATIC

SHEET NUMBER	DESCRIPTION
1	PRIMARY BOARD WITH MAIN TRANSFORMER
2	DC REGULATOR/AUDIO OUTPUT
3	EXTERNAL INPUT, SOURCE SELECTOR SWITCH+ SYSTEM CONTROL
4	FL DISPLAY, USER CONTROL KEYS VIDEO OUTPUT, MIC CIRCUIT
5	TAPE CIRCUIT, MECHANISM CONTROL
6	DVD CONTROL SYSTEM (1/2)
7	DVD CONTROL SYSTEM (2/2)

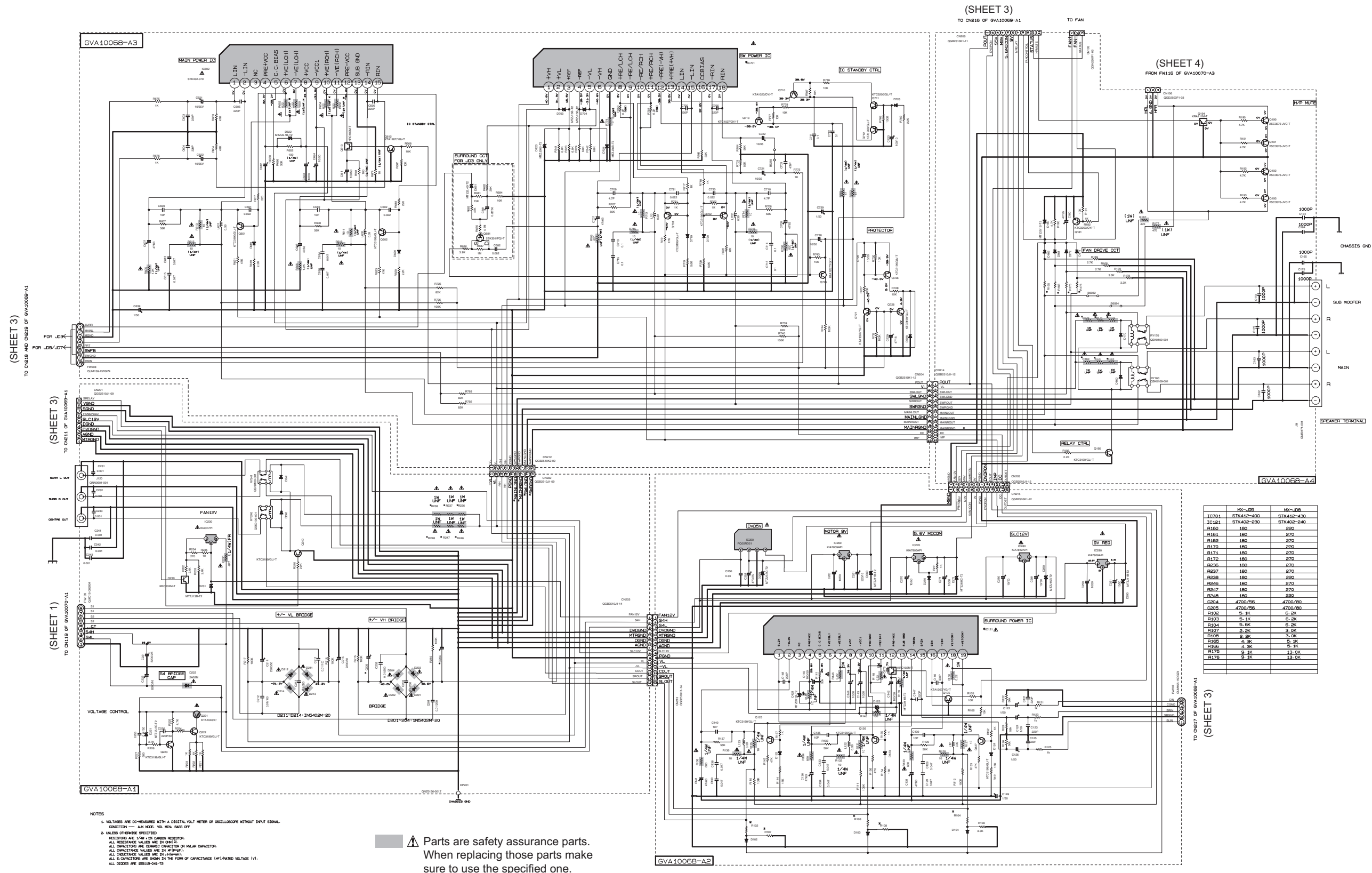
### VERSION CODE

UN	: SOUTH AMERICA
UN	: ASEAN
UX	: SAUDI ARABIA
UE	: TURKEY
US	: SINGAPORE AND UNIVERSAL EXCEPT ALL ABOVE
A	: AUSTRALIA

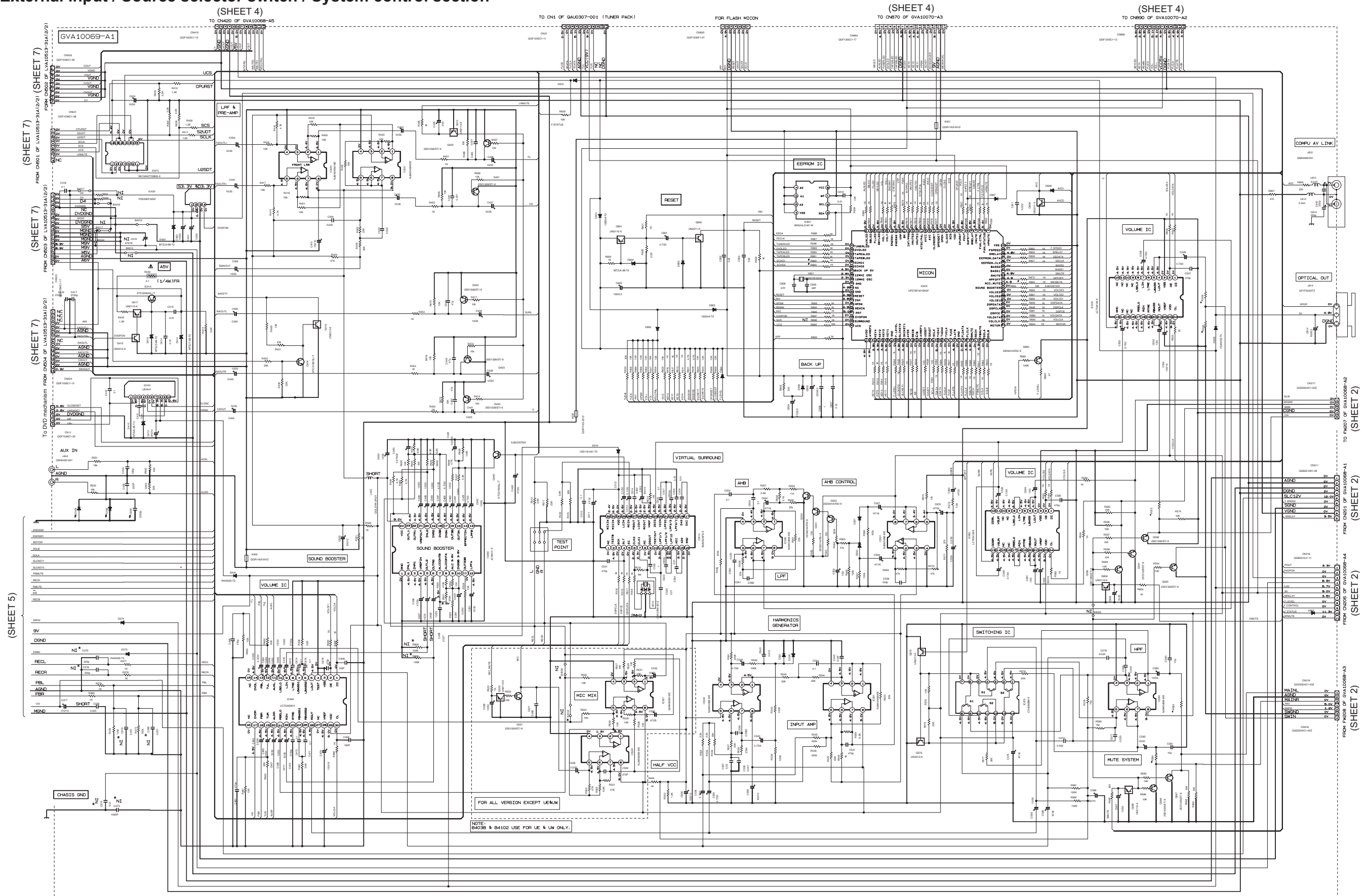
	MX-JD5	MX-JDB
F001	T4AL	T5AL
F003	T2AL	T2.5AL
T001	GGT0438-001	GGT0439-001
D2015	1N40035-T5	QUY150-050Y
C2010	100/63	n.i
D2017	1N40035-T5	n.i

▲ Parts are safety assurance parts. When replacing those parts make sure to use the specified one.

DC regulator / Audio output section



External input / Source selector switch / System control section



REF. NO.	PC-JDS	PC-JDB
R508	NRS463J-203X	NRS463J-912X
R509	NRS463J-332X	NRS463J-332X
R573	NRS463J-332X	NRS463J-102X
R583	QRE141J-512Y	QRE141J-102Y
R584	QRE141J-512Y	QRE141J-102Y
R579	QRE141J-753Y	QRE141J-753Y
R580	QRE141J-753Y	QRE141J-753Y

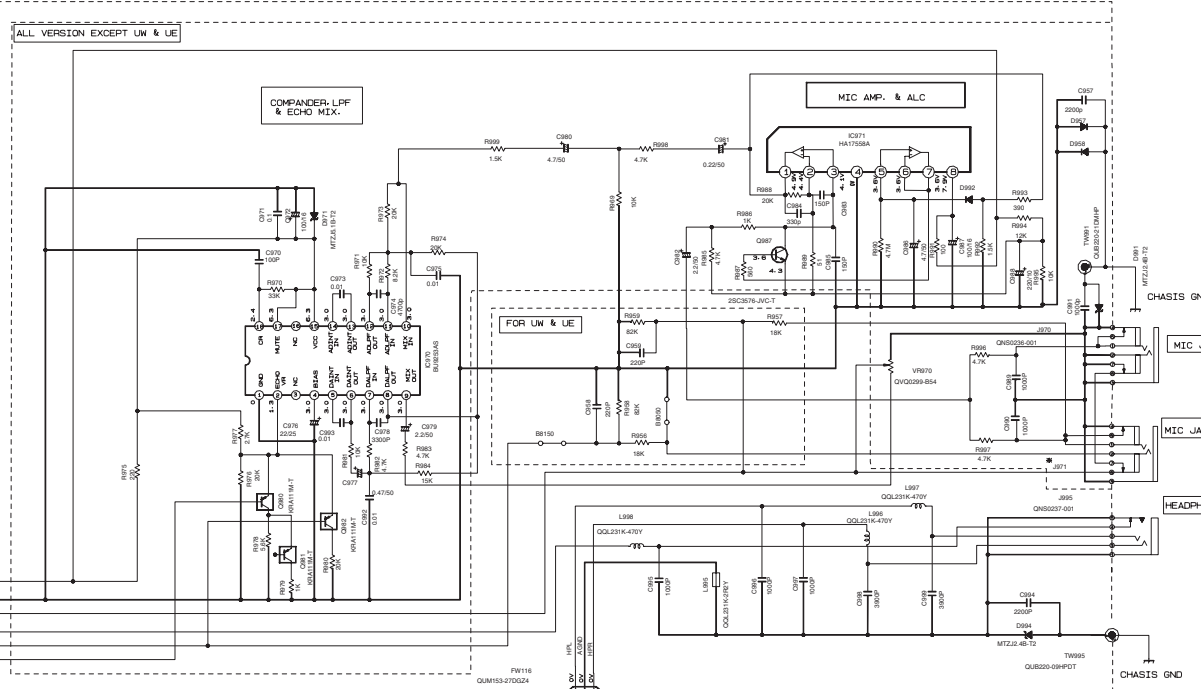
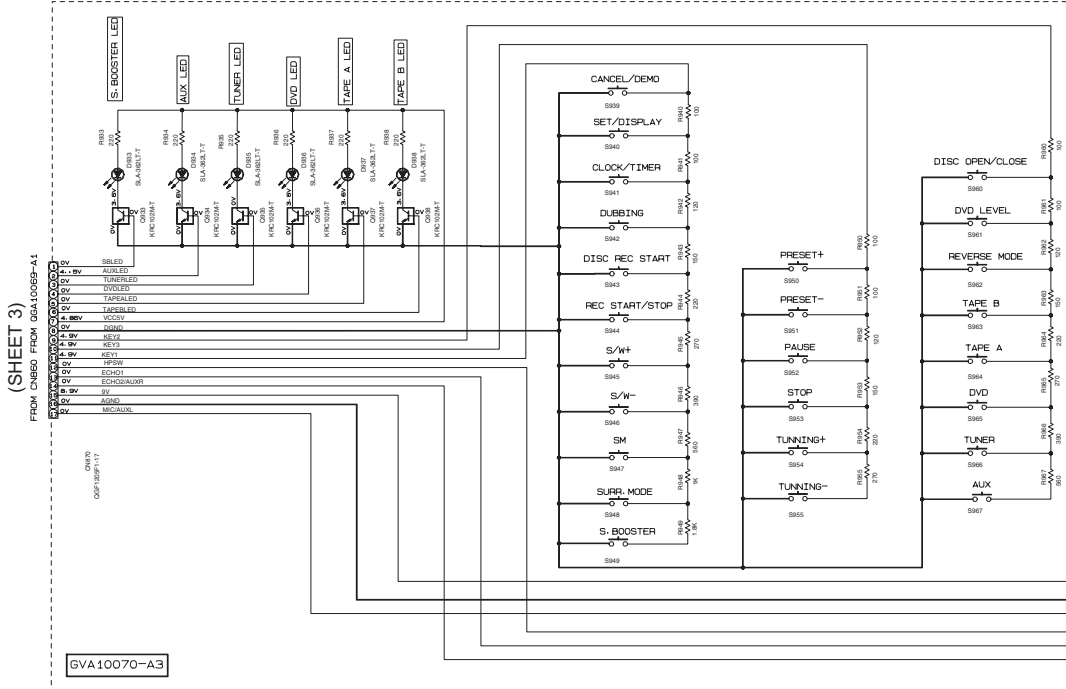
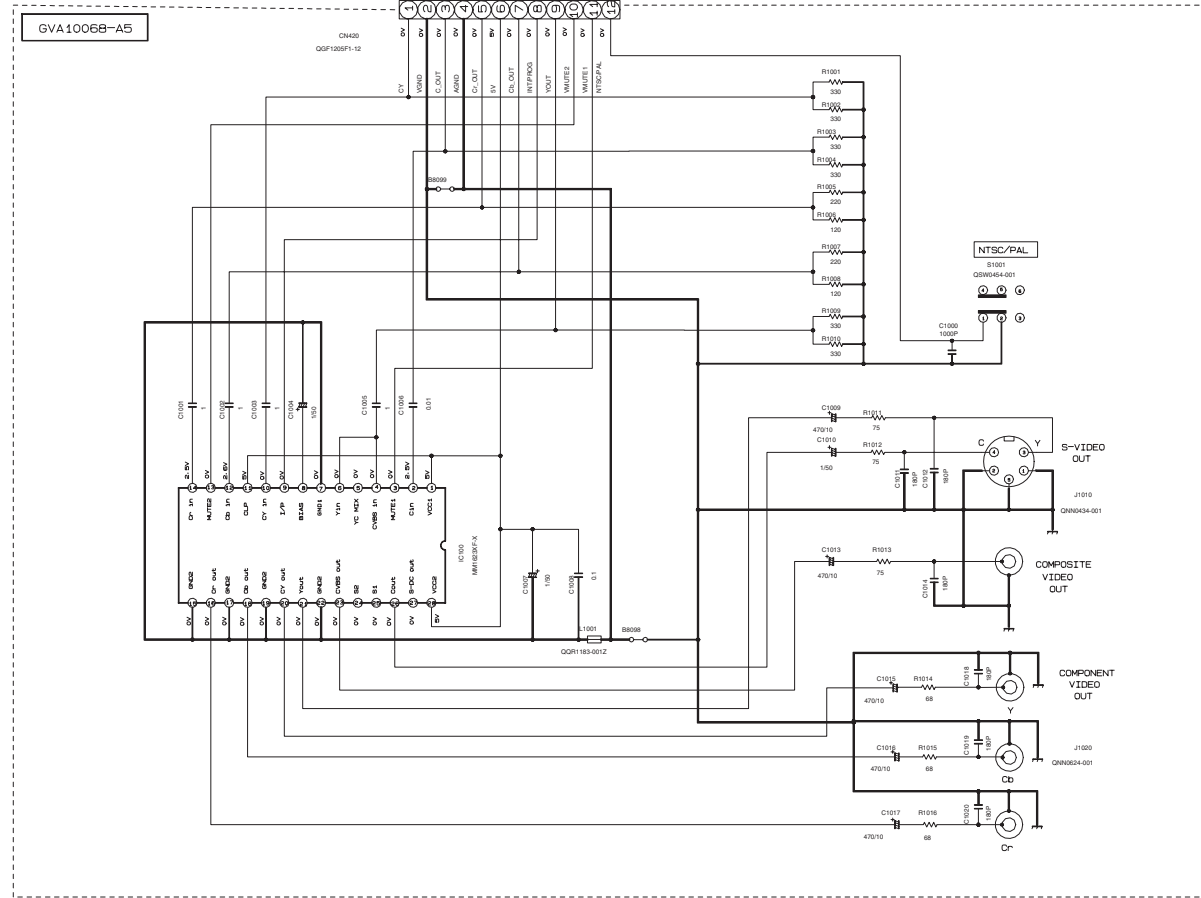
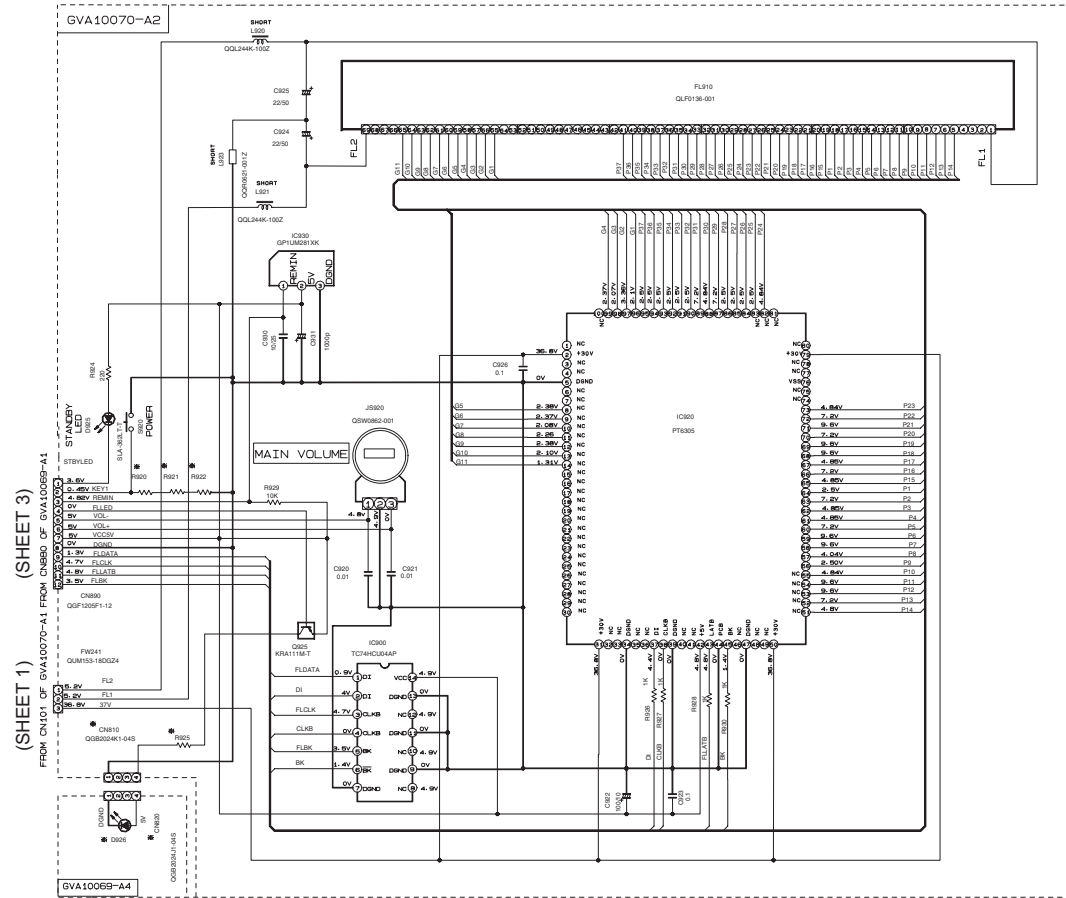
⚠ Parts are safety assurance parts.  
When replacing those parts make  
sure to use the specified one.

NOTE: # ———> NOT INSERT FOR UE & UW VERSION

NOTES:  
1. VOLTAGES ARE DC-HEADLED WITH A DIGITAL VOLT METER OR OSCILLOSCOPE WITHOUT INPUT SIGNAL.  
CHARACTER "AN RES." VOL. RES. BASS OFF  
2. UNLESS OTHERWISE SPECIFIED  
RESISTORS ARE 1/4W, 5% CARBON RESISTOR.  
CAPACITORS ARE TANTALUM CAPACITOR OR MILAR CAPACITOR.  
ALL CAPACITORS ARE TANTALUM CAPACITOR OR MILAR CAPACITOR.  
ALL INDUCTANCE VALUES ARE IN MH(MH).  
ALL CAPACITORS ARE SHOWN IN THE FORM OF CAPACITANCE (μF) UNLESS OTHERWISE SPECIFIED.  
ALL DIMENSIONS ARE IN MILLIMETERS.  
REPLACE BY 800 958E



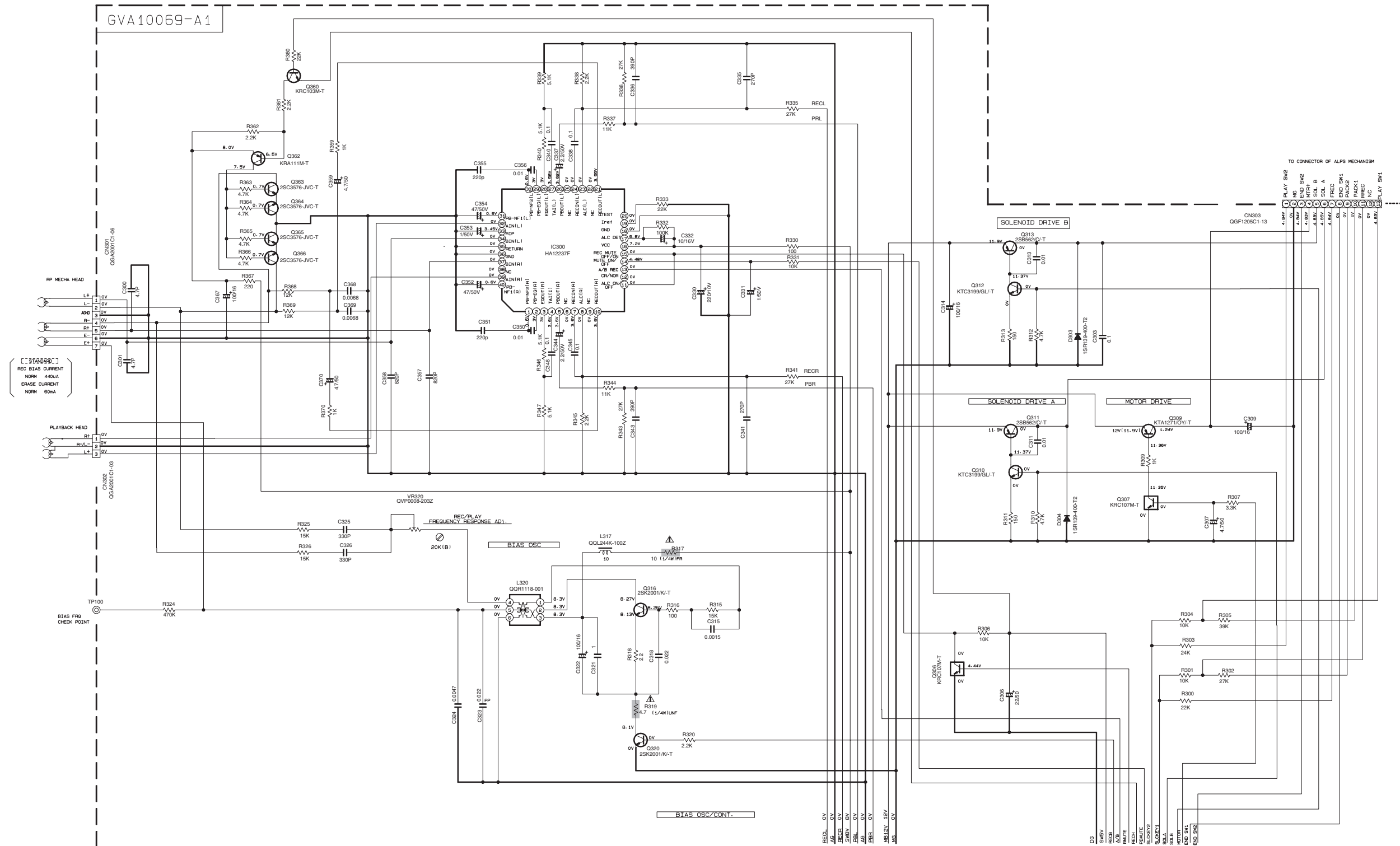
FL display / User control keys / Video output / Microphone circuit section



VERSION REF. NO.	MX-JD3			MX-JD5				MX-JD8			REMARK	
	UN/US/EE	UX	UE	UN/US	UX	UE	UW	A	UN/US	UX		UW
R820 (B8003)	100	200	200	470	470	2K	470	9.1K	1.2K	1.2K	2K	VER. SETTING FOR KEY1
R821 (B8005)	SHORT	SHORT	120	SHORT	220	910	270	150	510	910	150	VER. SETTING FOR KEY2
R822 (B8006)	SHORT	SHORT	SHORT	SHORT	SHORT	1.8K	270	300	SHORT	200	SHORT	VER. SETTING FOR KEY3
CN810	NONE	NONE	NONE	USE	USE	USE	USE	USE	USE	USE	USE	
CN820	NONE	NONE	NONE	USE	USE	USE	USE	USE	USE	USE	USE	
D926	NONE	NONE	NONE	SLI-343URC3F	SLI-343URC3F	SLI-343URC3F	SLI-343URC3F	SLI-343URC3F	SELL2210C-P	SELL2210C-P	SELL2210C-P	
J971	QNS0236-001	QNS0236-001	QNS0236-001	QNS0236-001	QNS0236-001	QNS0236-001	QNS0236-001	QNS0236-001	QNS0236-001	QNS0236-001	QNS0236-001	
R826	NONE	NONE	NONE	200	200	200	200	200	150	150	150	

NOTES  
 1. VOLTAGES ARE DC-MEASURED WITH A DIGITAL VOLT METER OR OSCILLOSCOPE WITHOUT INPUT SIGNAL.  
 2. UNLESS OTHERWISE SPECIFIED  
 RESISTORS ARE 1/4W ± 5% CARBON RESISTOR.  
 ALL RESISTANCE VALUES ARE IN OHM (Ω).  
 ALL CAPACITORS ARE CERAMIC CAPACITOR OR MYLAR CAPACITOR.  
 ALL CAPACITANCE VALUES ARE IN PF (pF).  
 ALL INDUCTANCE VALUES ARE IN MH (mH).  
 ALL E-CAPACITORS ARE SHOWN IN THE FORM OF CAPACITANCE (μF)/RATED VOLTAGE (V).  
 ALL DIODES ARE 1N5138-T2.  
 ALL TACT SWITCHES ARE GEM0074-0012.

■ Tape circuit / Mechanism control section



NOTES

1. VOLTAGES ARE DC-MEASURED WITH A DIGITAL VOLT METER OR OSCILLOSCOPE WITHOUT INPUT SIGNAL. CONDITION : MECHA STOP MODE

2. UNLESS OTHERWISE SPECIFIED, RESISTORS ARE 1/10W ±5% METAL GLAZE RESISTOR. ALL RESISTANCE VALUES ARE IN Ω(M)Ω. ALL CAPACITORS ARE CERAMIC CAPACITOR OR MYLAR CAPACITOR. ALL CAPACITANCE VALUES ARE IN # (P=PF). ALL INDUCTANCE VALUES ARE IN #H(M=MH). ALL E-CAPACITORS ARE SHOWN IN THE FORM OF CAPACITANCE (#1/RATED VOLTAGE (V)).

GUARD BAND NOT CONNECT TO NET

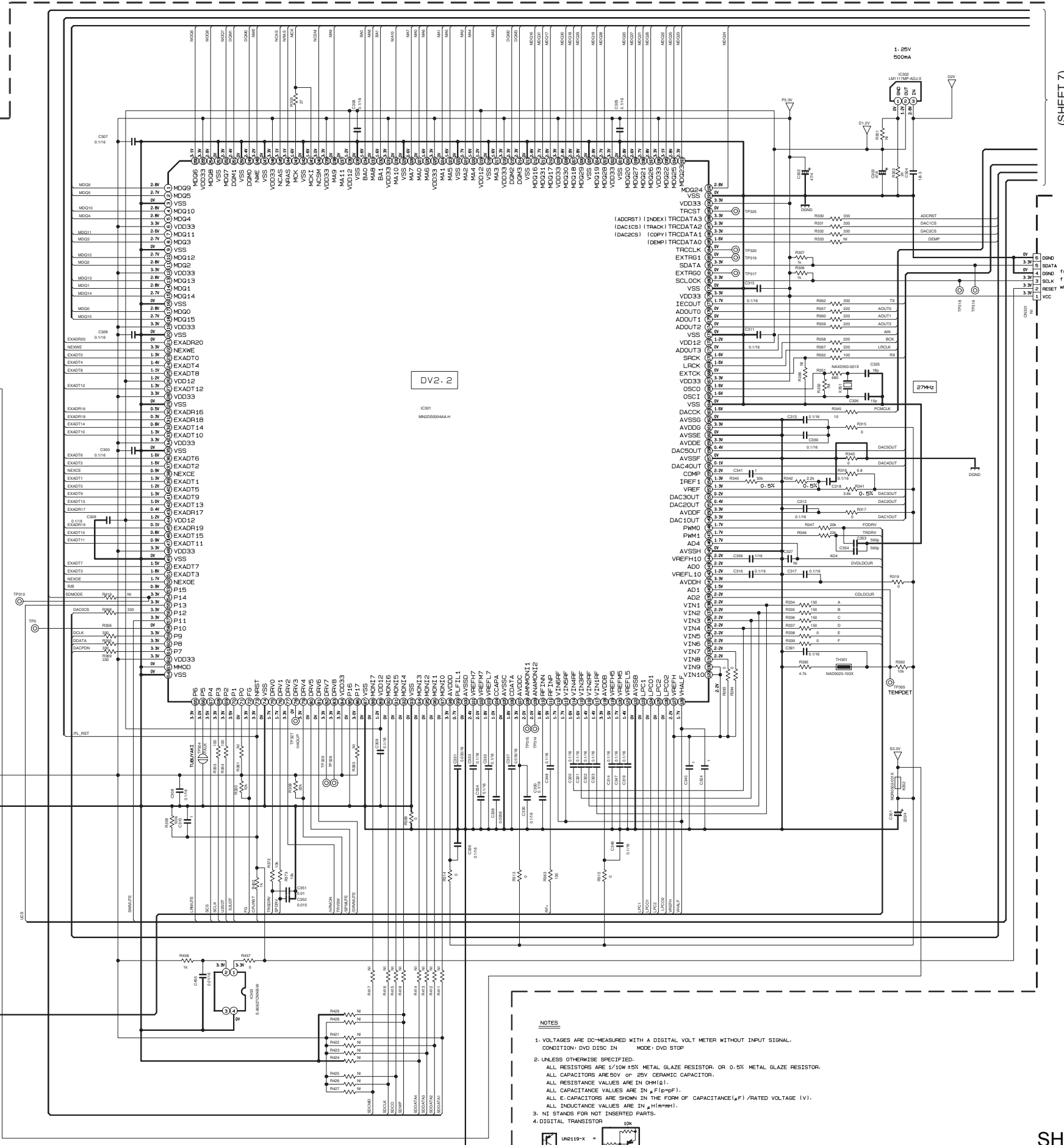
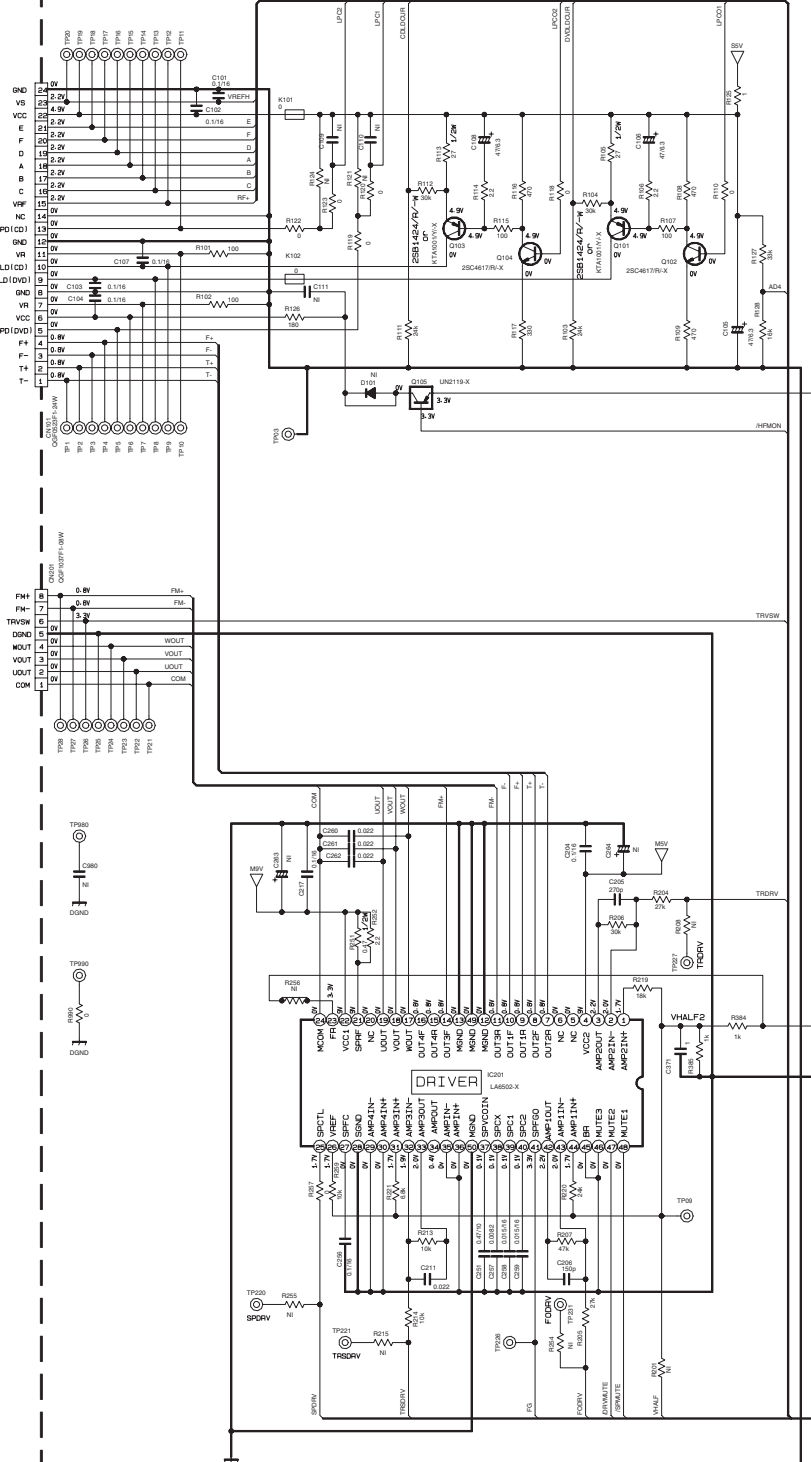
▲ Parts are safety assurance parts. When replacing those parts make sure to use the specified one.



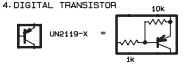
DVD control system section (1/2)



LVA10513-31A(1/2)



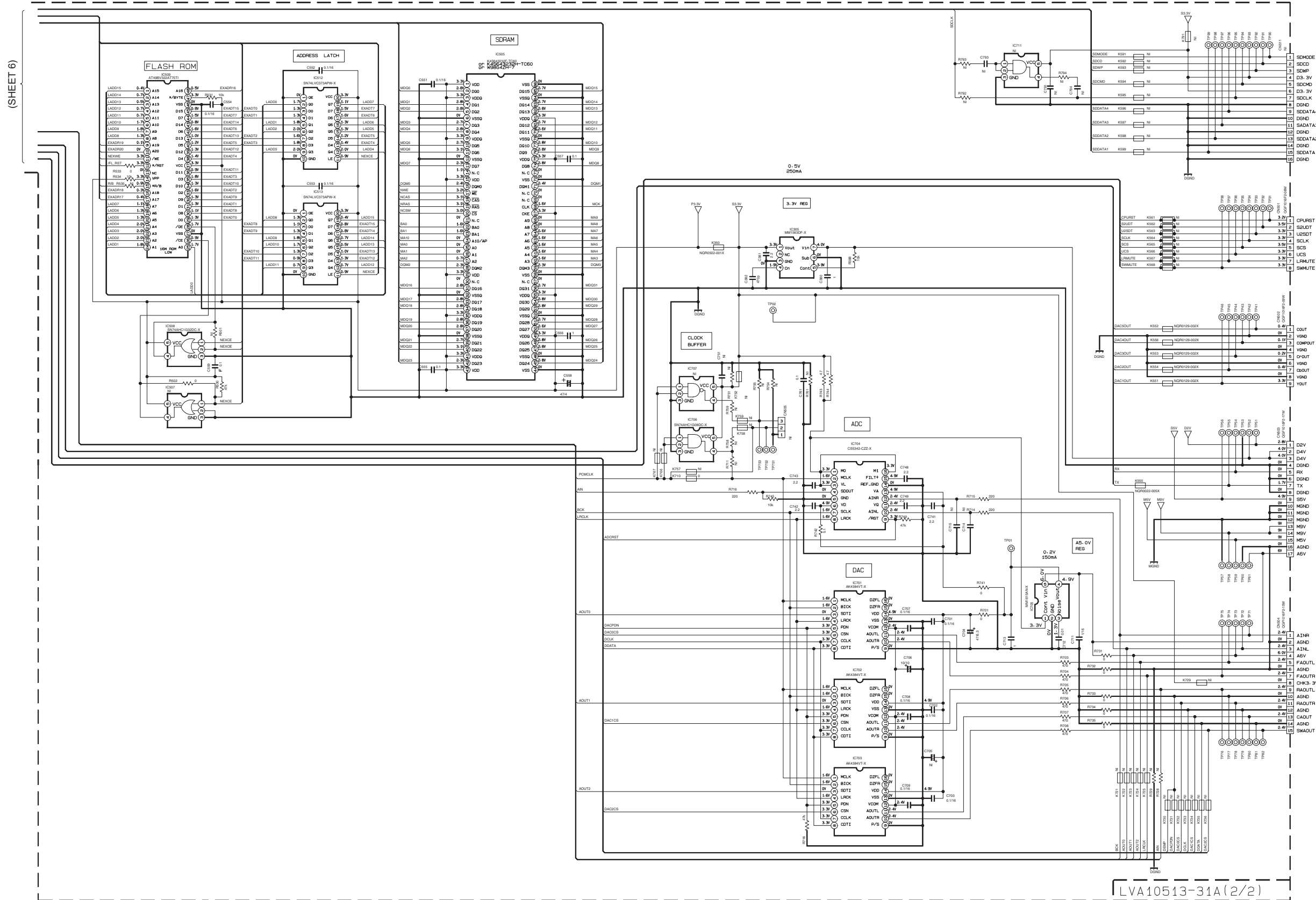
- NOTES**
- VOLTAGES ARE DC-MEASURED WITH A DIGITAL VOLT METER WITHOUT INPUT SIGNAL. CONDITION: DVD DISC IN MODE: DVD STOP
  - UNLESS OTHERWISE SPECIFIED:  
ALL RESISTORS ARE 1/16W ±5% METAL GLAZE RESISTOR OR 0.5% METAL GLAZE RESISTOR.  
ALL CAPACITORS ARE 50V OR 25V CERAMIC CAPACITOR.  
ALL RESISTANCE VALUES ARE IN Ω (kΩ, MΩ).  
ALL CAPACITANCE VALUES ARE IN pF (nF, μF).  
ALL C-CAPACITORS ARE SHOWN IN THE FORM OF CAPACITANCE (μF) / RATED VOLTAGE (V).  
ALL INDUCTANCE VALUES ARE IN μH (mH).
  - NI STANDS FOR NOT INSERTED PARTS.
  - DIGITAL TRANSISTOR



(SHEET 7)

SHEET 6

DVD control system section (2/2)



NOTES

- VOLTAGES ARE DC-MEASURED WITH A DIGITAL VOLT METER WITHOUT INPUT SIGNAL. CONDITION: DVD DISC IN MODE: DVD STOP.
- UNLESS OTHERWISE SPECIFIED. ALL RESISTORS ARE 1/10W ±5% METAL GLAZE RESISTOR, OR 0.5X METAL GLAZE RESISTOR. ALL CAPACITORS ARE 50V, 20V OR 16V CERAMIC CAPACITOR. ALL RESISTANCE VALUES ARE IN OHMS (Ω). ALL CAPACITANCE VALUES ARE IN PICO (PF). ALL E. CAPACITORS ARE SHOWN IN THE FORM OF CAPACITANCE (PF) / RATED VOLTAGE (V). ALL INDUCTANCE VALUES ARE IN MILLI (MH).
- NI STANDS FOR NOT INSERTED PARTS.

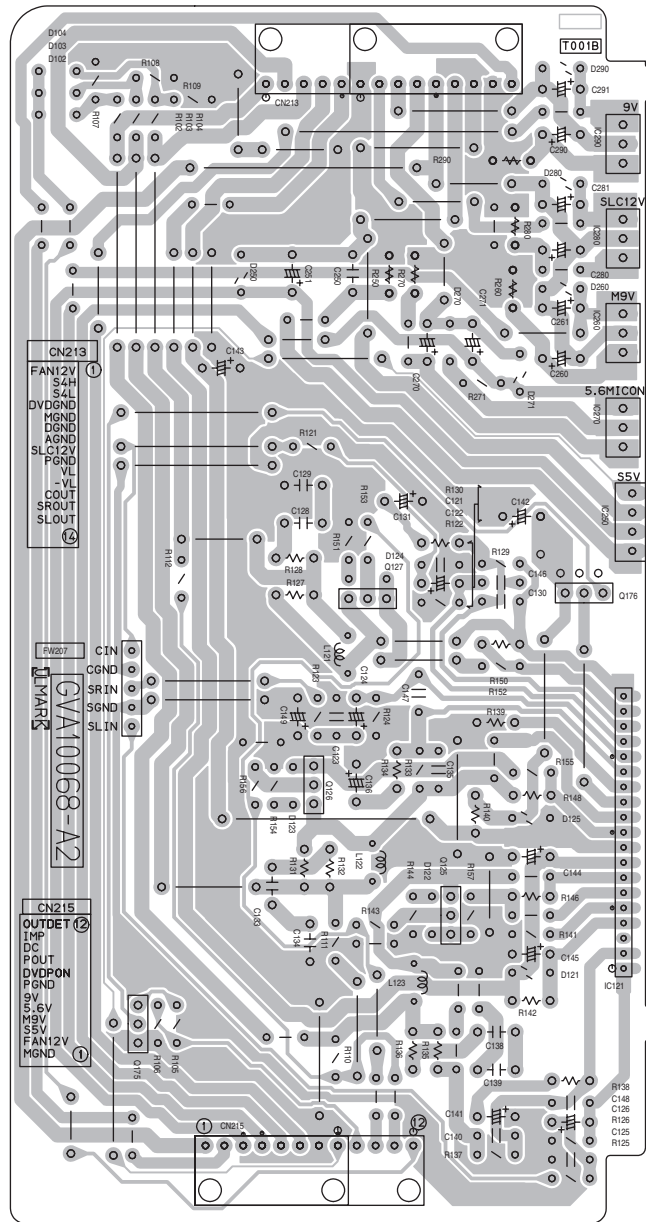
4-DIGITAL TRANSISTOR

D71A132E-X

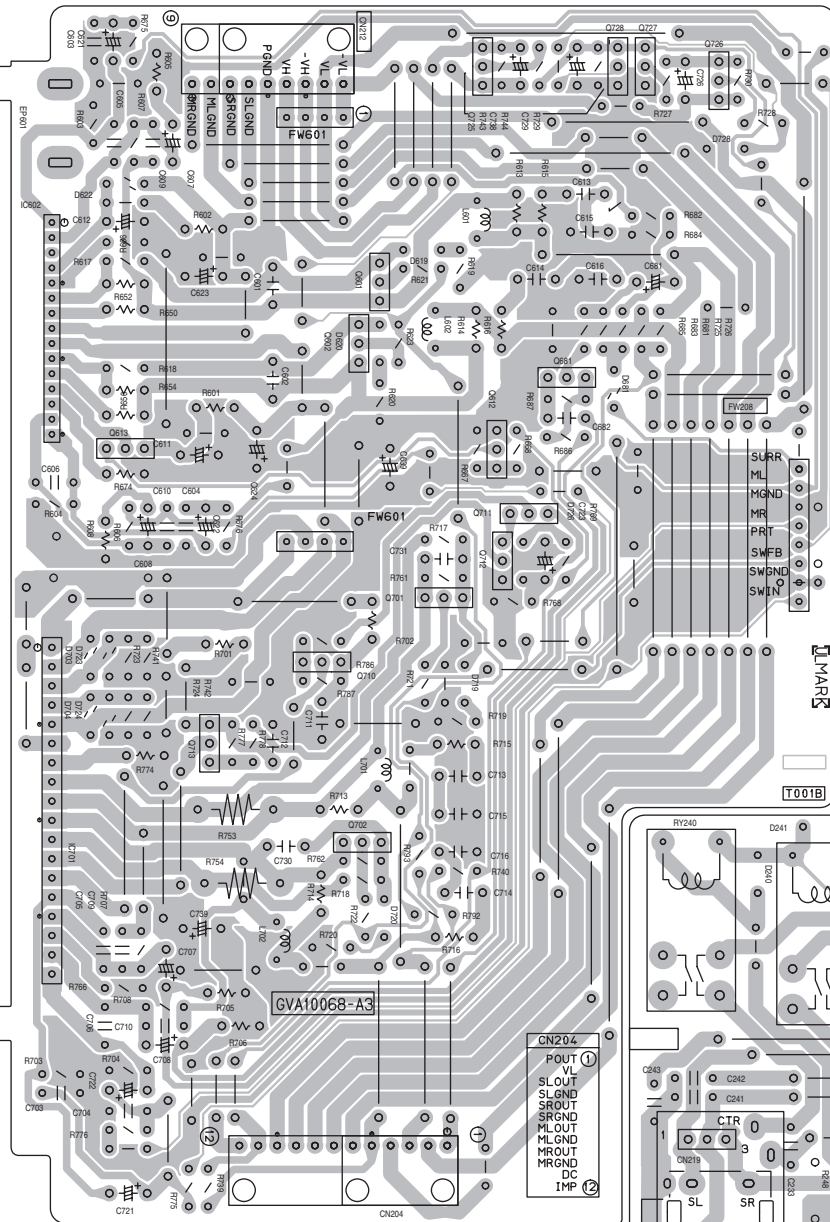
# Printed circuit boards

## Power board

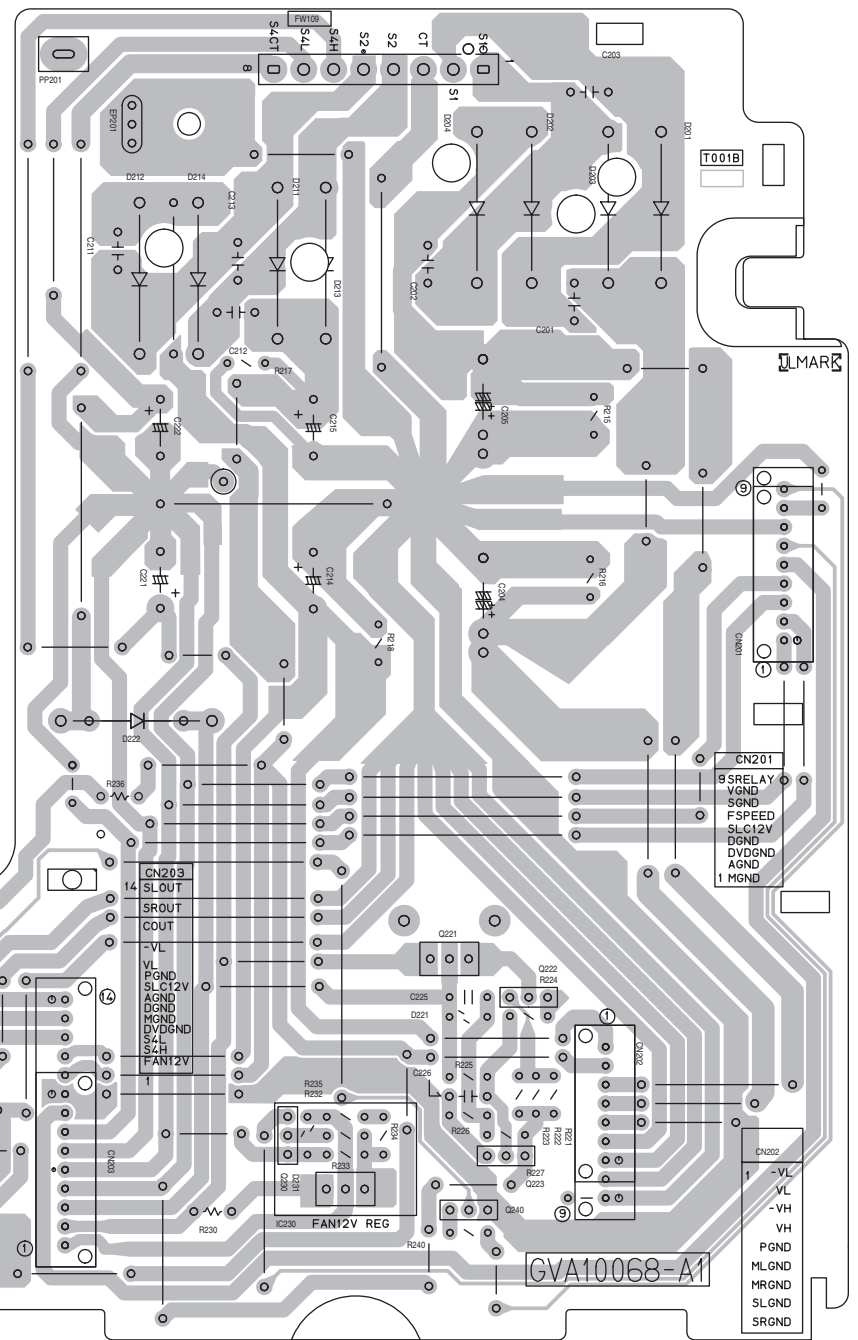
(Regulator & Surround amplifier board)



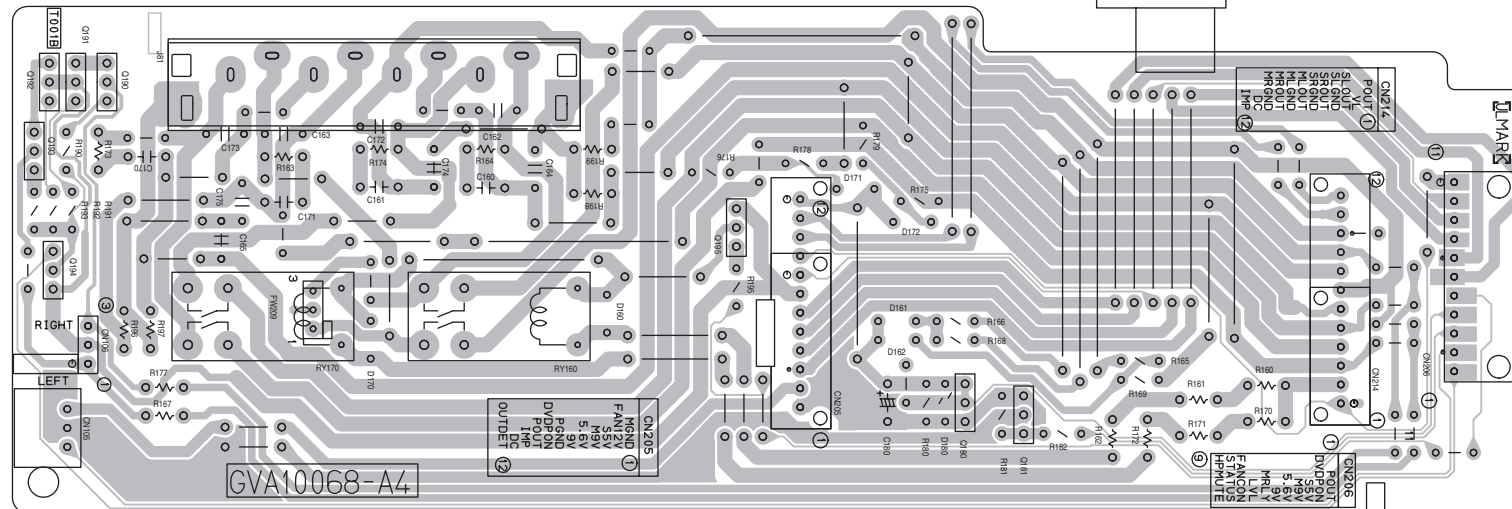
(Main & Subwoofer amplifier board)



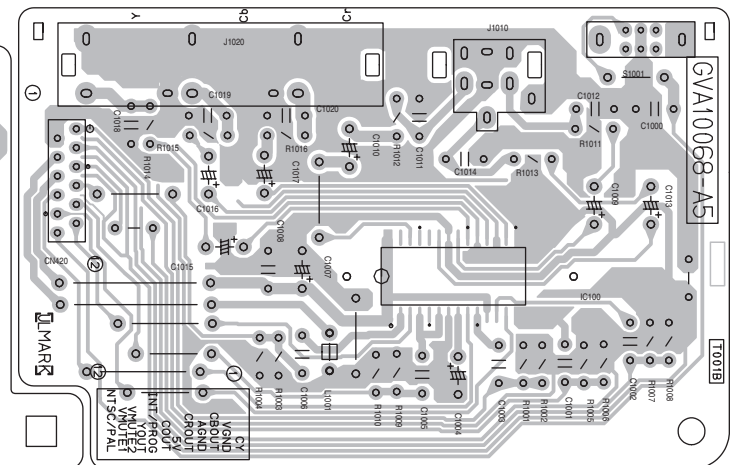
(Primary board)



(Speaker terminal board)

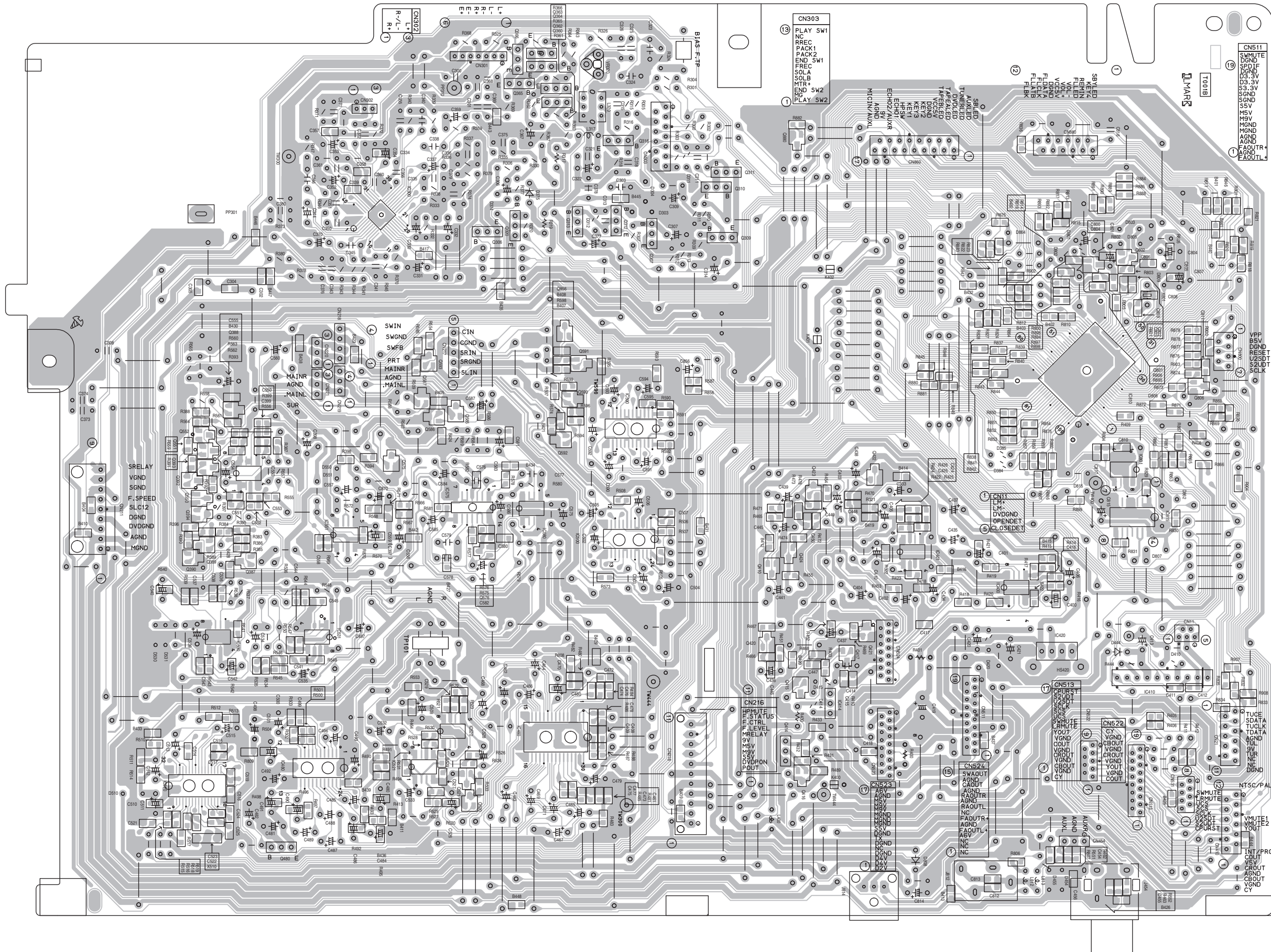


(Video board)

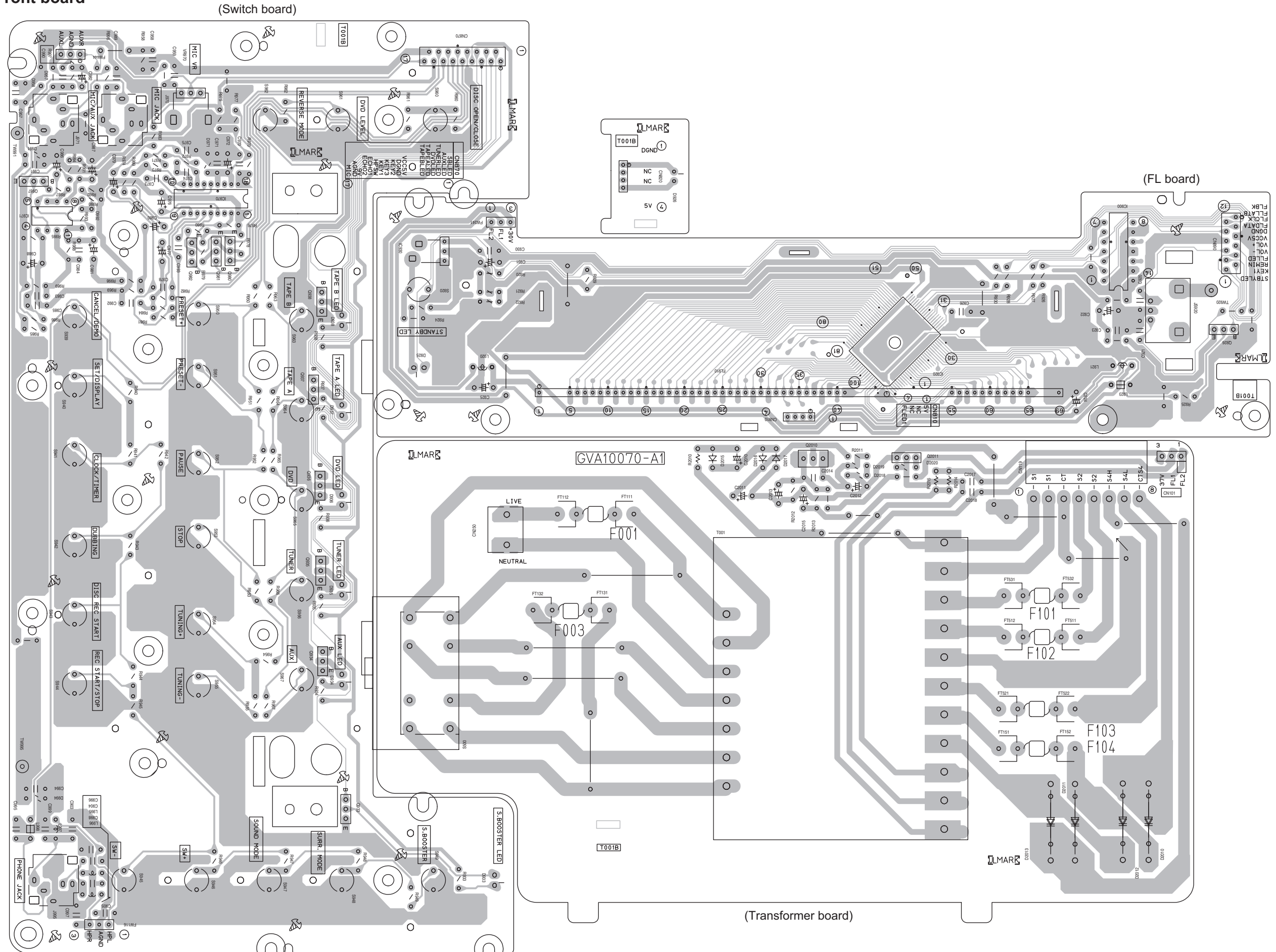




(Main board)



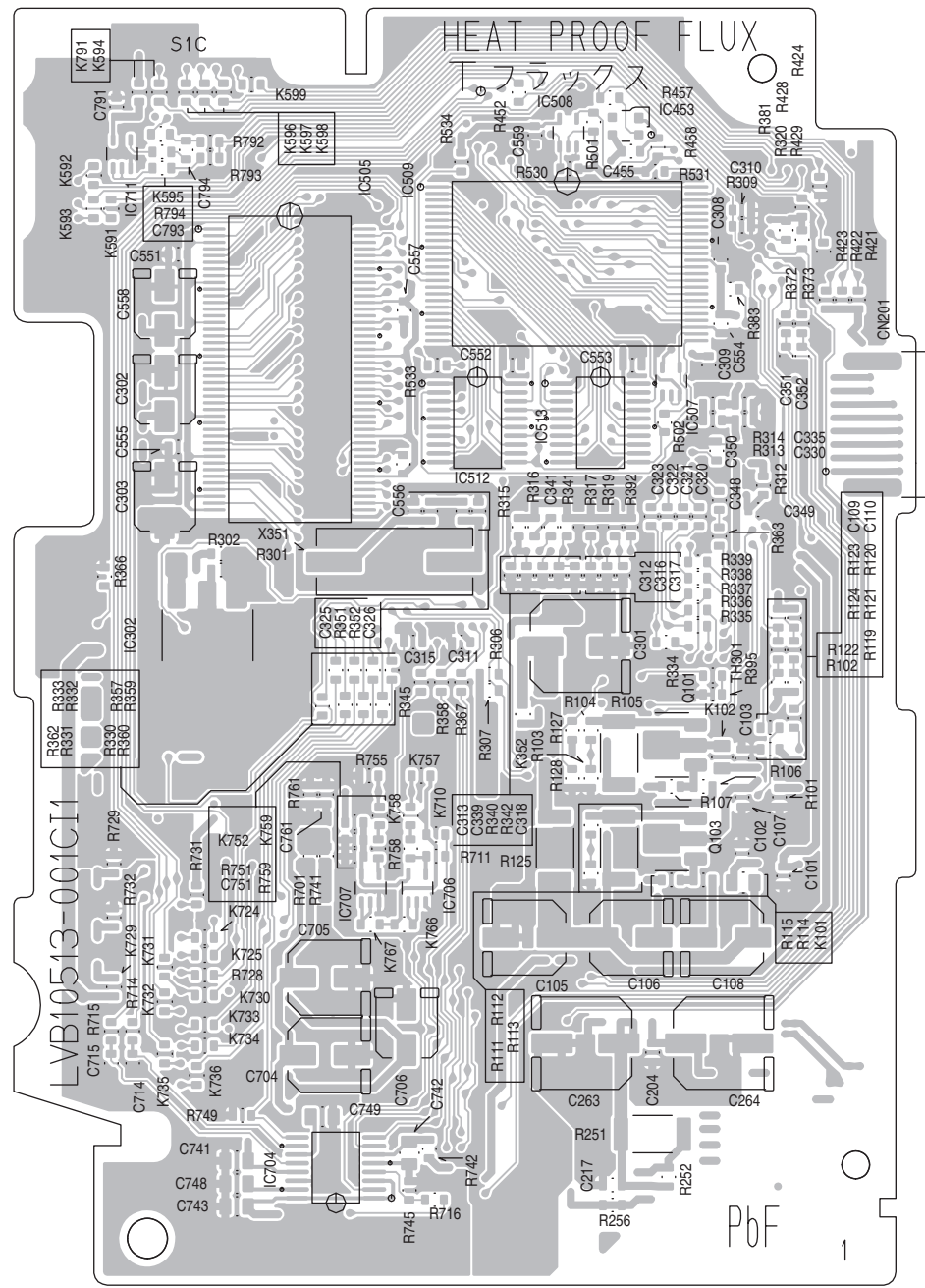
■ Front board



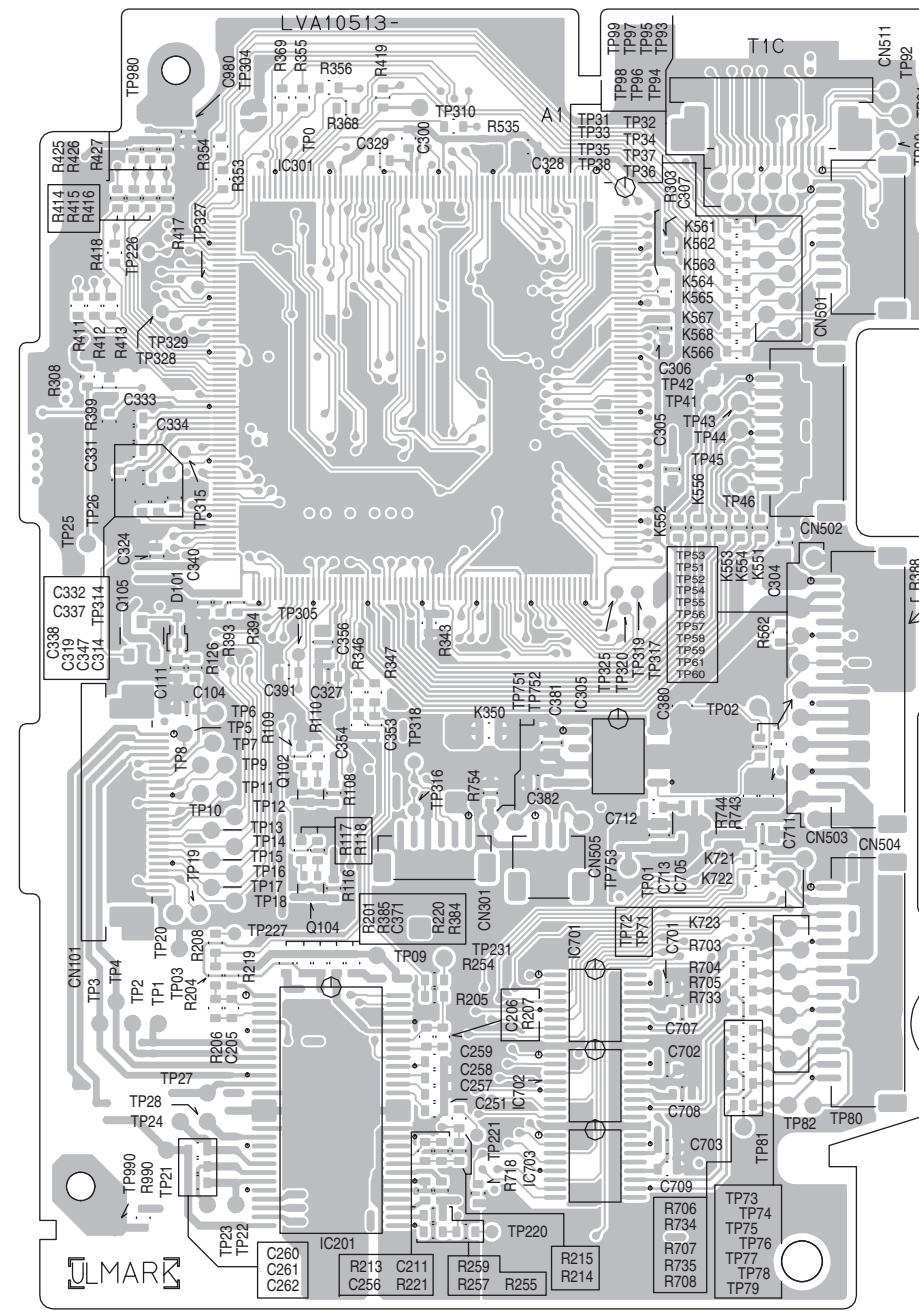


■ DVD servo board

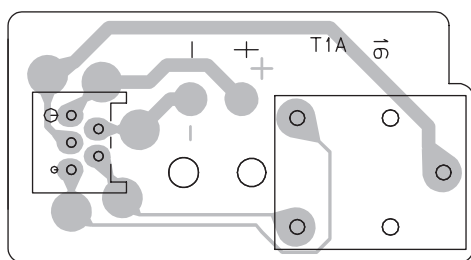
Forward side



Reverse side



■ DVD loading switch board





< MEMO >

**JVC**

Victor Company of Japan, Limited

AV & MULTIMEDIA COMPANY AUDIO/VIDEO SYSTEMS CATEGORY 10-1, 1chome, Ohwatari-machi, Maebashi-city, 371-8543, Japan

(No.MB282SCH)



Printed in Japan  
WPC