

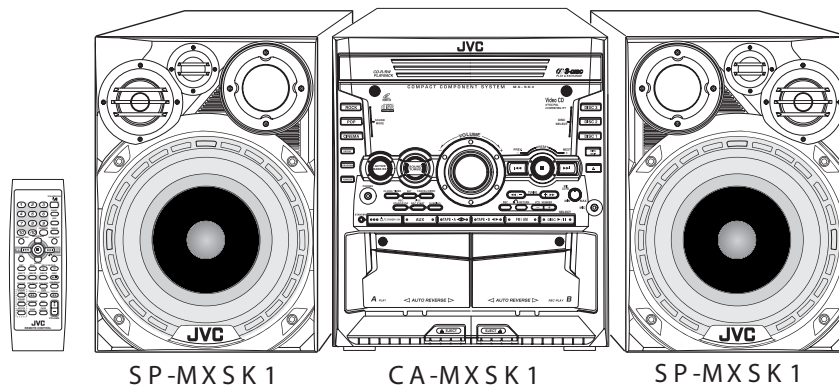
JVC

SCHEMATIC DIAGRAMS

COMPACT COMPONENT SYSTEM

MX-SK1

CD-ROM No.SML200404



Area suffix

EE ----- Russian Federation

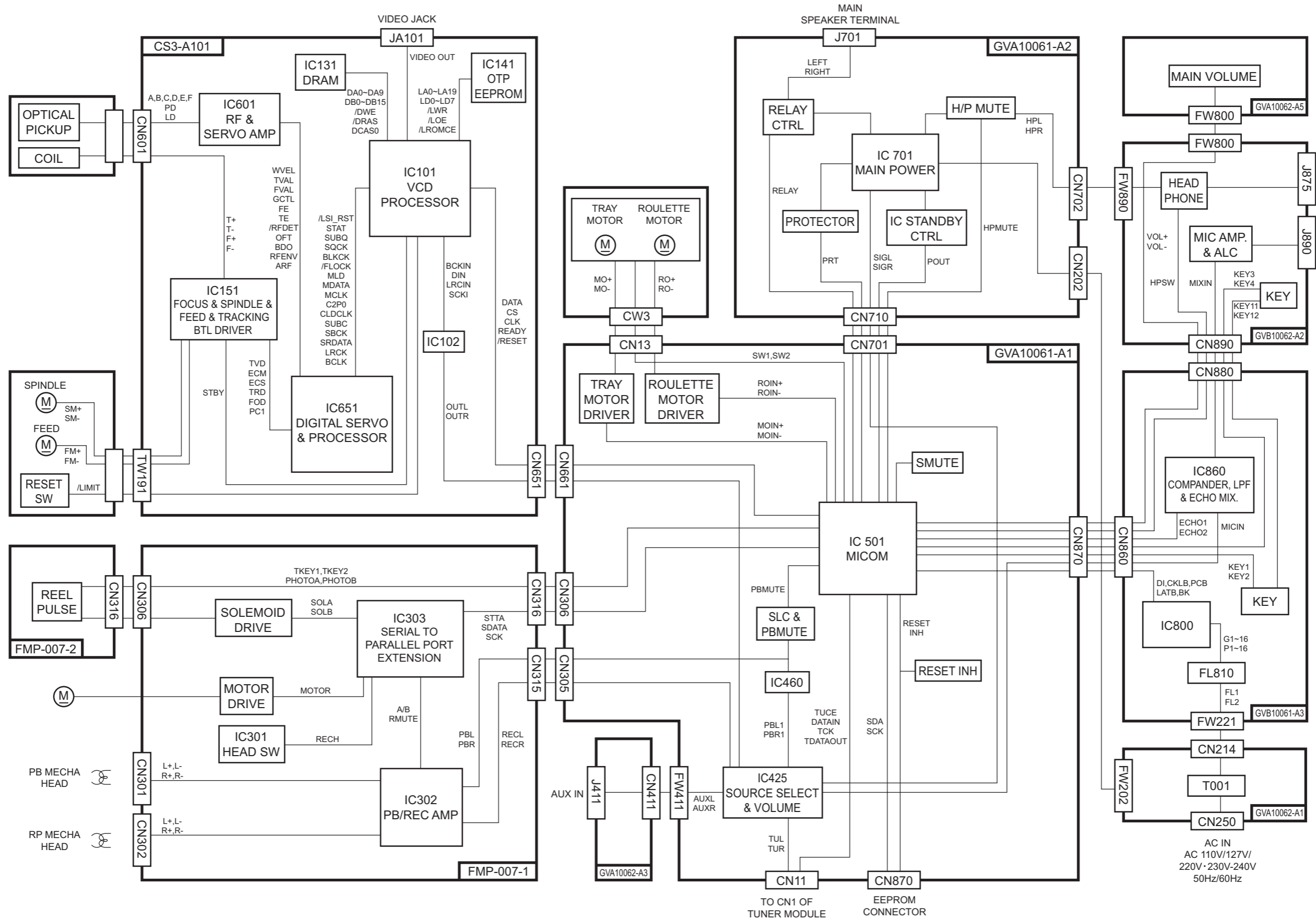
Contents

Block diagram	2-1
Standard schematic diagrams	2-2
Printed circuit boards	2-8

In regard with component parts appearing on the silk-screen printed side (parts side) of the PWB diagrams, the parts that are printed over with black such as the resistor (■), diode (▣) and ICP (●) or identified by the "△" mark nearby are critical for safety.

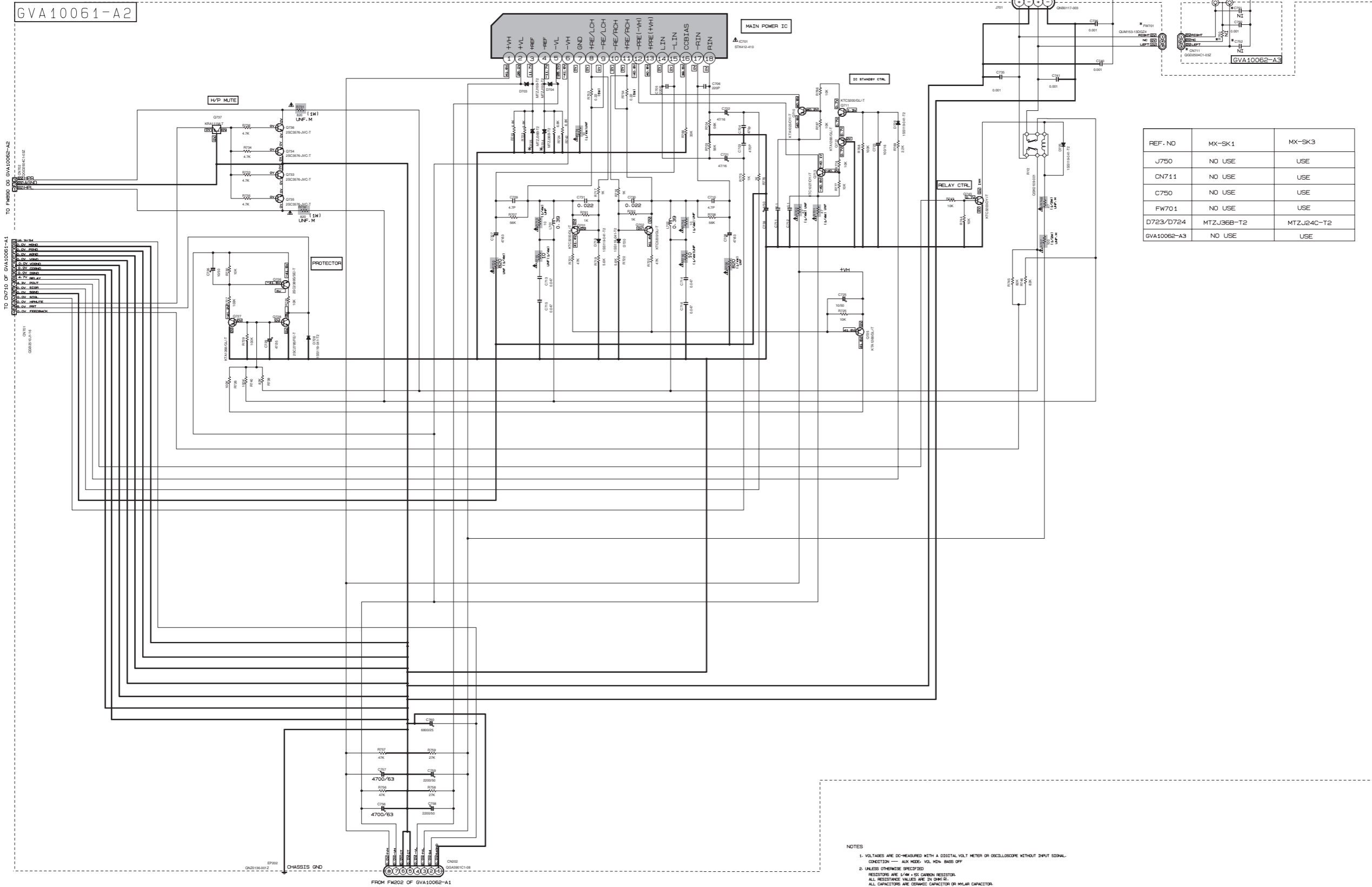
(This regulation does not correspond to J and C version.)

Block diagram



■ Amp section

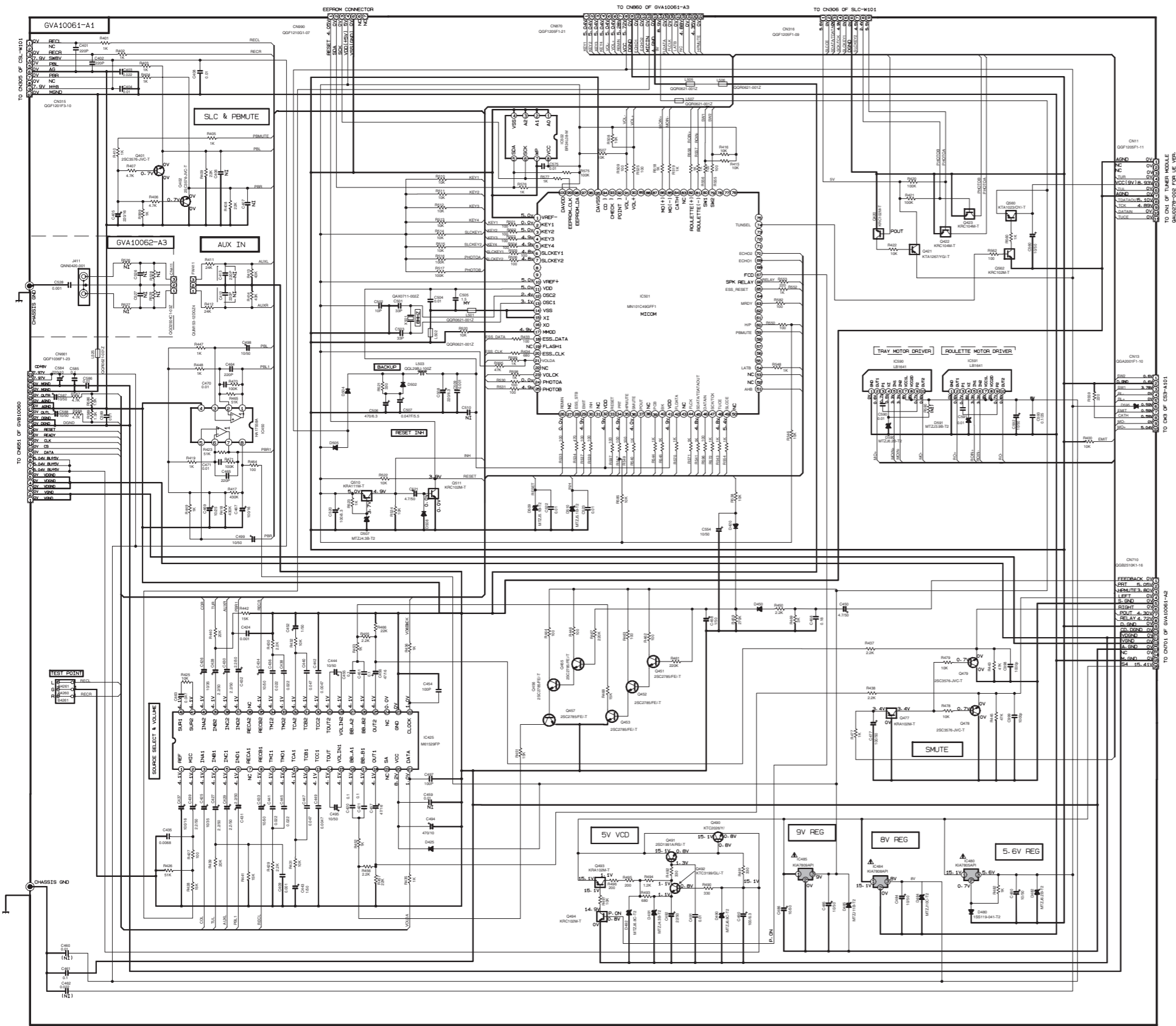
GVA10061-A2



REF. NO	MX-SK1	MX-SK3
J750	NO USE	USE
CN711	NO USE	USE
C750	NO USE	USE
FW701	NO USE	USE
D723/D724	MTZJ36B-T2	MTZJ24C-T2
GVA10062-A3	NO USE	USE

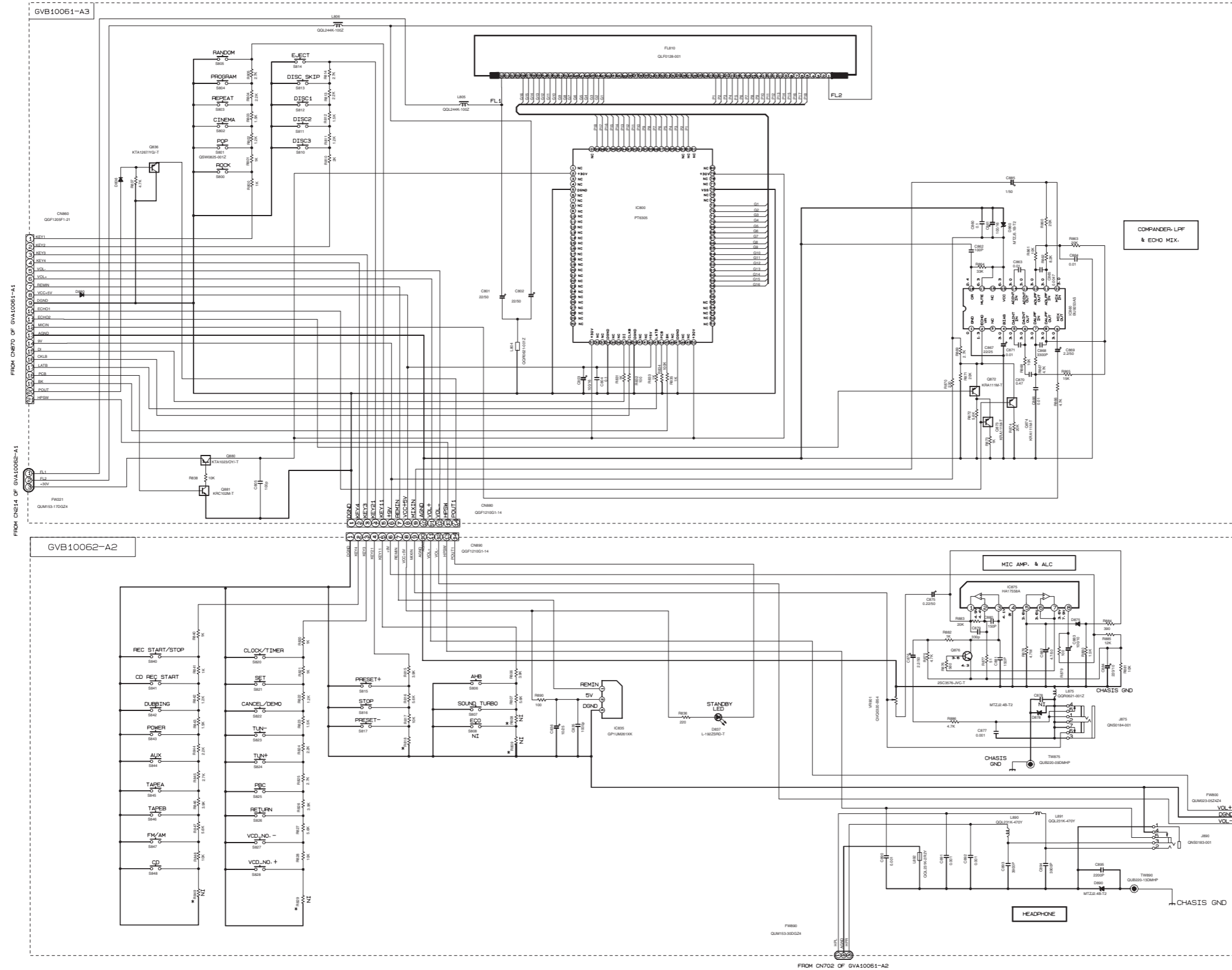
NOTES
 1. VOLTAGES ARE DC-MEASURED WITH A DIGITAL VOLT METER OR OSCILLOSCOPE WITHOUT INPUT SIGNAL. CONDITION - AUX MODE, VOL. HDN, BASS OFF.
 2. VALUES IN PARENTHESIS SPECIFIED.
 RESISTORS ARE 1/4W ± 5% CARBON RESISTOR.
 ALL RESISTANCE VALUES ARE IN OHMS.
 ALL CAPACITORS ARE CERAMIC CAPACITOR OR MYLAR CAPACITOR.
 ALL CAPACITANCE VALUES ARE IN PICO (pF).
 ALL INDUCTANCE VALUES ARE IN HENRY (H).
 ALL E-CAPACITORS ARE SHOWN IN THE FORM OF CAPACITANCE (µF)/RATED VOLTAGE (V).
 ALL CODES ARE 155119-041-12.

■ Slector & Micon section



- NOTES
1. VOLTAGES ARE DC-MEASURED WITH A DIGITAL VOLT METER OR OSCILLOSCOPE WITHOUT INPUT SIGNAL.
CONDITION — AIR MEX VOL MPA-SUBCOPPER VOL 1.
 2. UNLESS OTHERWISE SPECIFIED
RESISTORS ARE 1/4W 1% CARBON RESISTOR.
ALL RESISTANCE VALUES ARE IN OHMS.
ALL CAPACITORS ARE CERAMIC CAPACITOR OR MYLAR CAPACITOR.
ALL CAPACITANCE VALUES ARE IN pF (pF).
ALL INDUCTANCE VALUES ARE IN H (HMH).
ALL DIODES ARE 1SS190A1-72
 3. NT = COMPONENT NOT INSERT

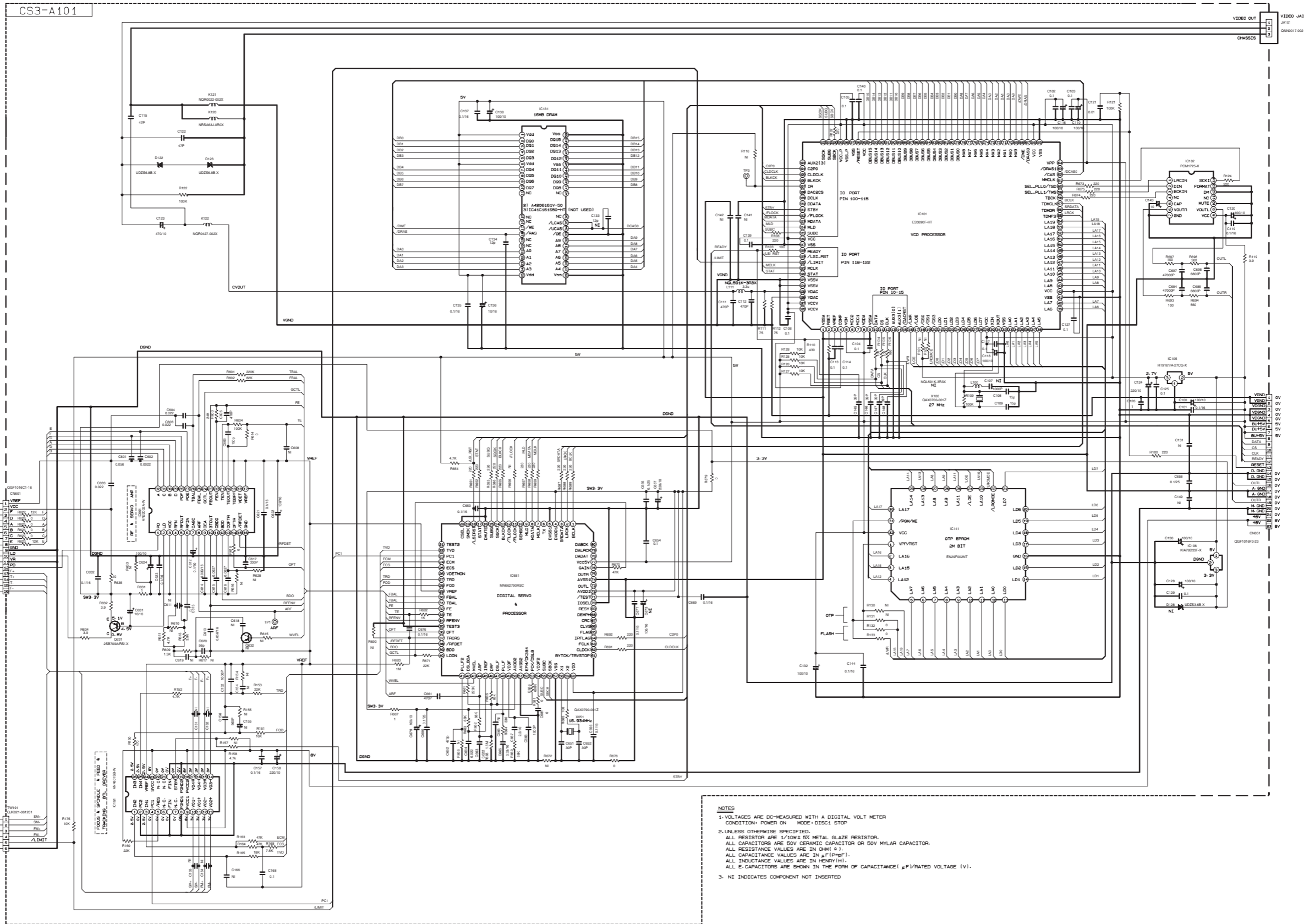
■ FL & Micon section



MARK				REMARK
VERSION	LN-US	UX	UE	
REF. NO.				VER. SETTING FOR KEY2
RB1B	NONE	1BK	NONE	

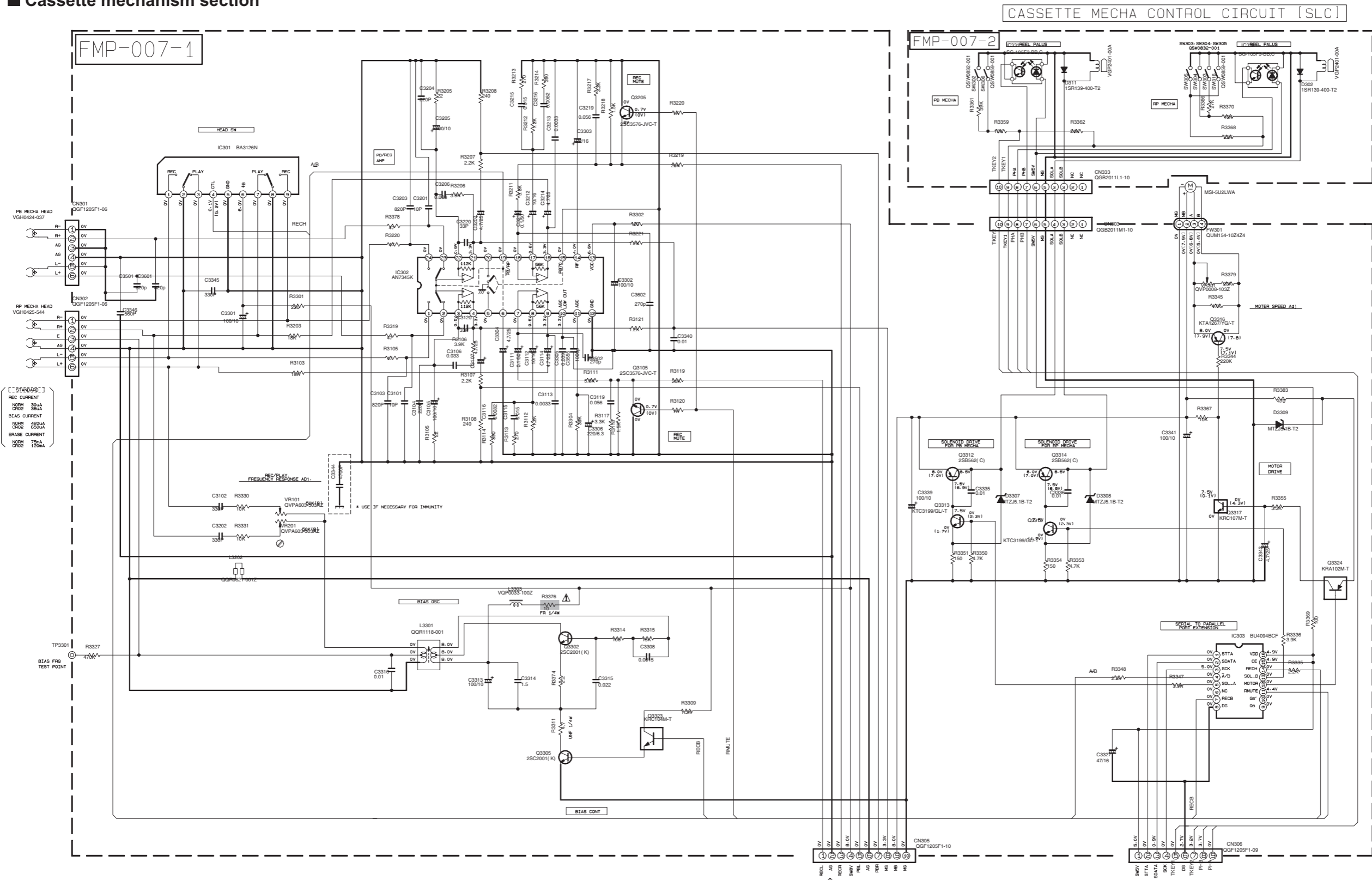
NOTES
 1. VOLTAGES ARE DC-MEASURED WITH A DIGITAL VOLT METER OR OSCILLOSCOPE WITHOUT INPUT SIGNAL.
 CONDITION — AUX MODE, VOL. HON, BASS OFF
 2. UNLESS OTHERWISE SPECIFIED
 RESISTORS ARE 1/4W ± 5% CARBON RESISTOR
 ALL RESISTANCE VALUES ARE IN OHMS
 ALL CAPACITORS ARE CERAMIC CAPACITOR OR MYLAR CAPACITOR
 ALL CAPACITANCE VALUES ARE IN PFD (PF)
 ALL INDUCTANCE VALUES ARE IN MH (MH)
 ALL CAPACITORS ARE SHOWN IN THE FORM OF CAPACITANCE (N/F) / RATED VOLTAGE (V)
 ALL DIODES ARE 1SS119-041-T2
 ALL TACT SWITCHES ARE QM2005-002

CD servo control section



- NOTES
1. VOLTAGES ARE DC-MEASURED WITH A DIGITAL VOLT METER
CONDITION: POWER ON - MODE: DISC1 STOP
 2. UNLESS OTHERWISE SPECIFIED:
ALL RESISTORS ARE 1/10W ± 5% METAL GLAZE RESISTOR.
ALL CAPACITORS ARE 50V CERAMIC CAPACITOR OR 50V MYLAR CAPACITOR.
ALL RESISTANCE VALUES ARE IN OHM (Ω).
ALL CAPACITANCE VALUES ARE IN μF (μF).
ALL INDUCTANCE VALUES ARE IN HENRY (H).
 3. NI INDICATES COMPONENT NOT INSERTED

Cassette mechanism section



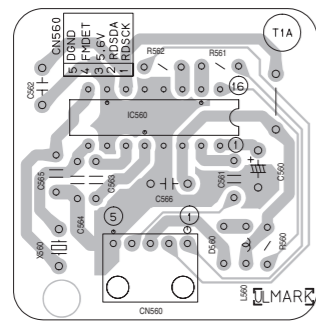
[[STANDARD]]
 REC CURRENT
 NORM 300A
 CR2 300A
 BIAS CURRENT
 NORM 400mA
 CR2 650A
 ERASE CURRENT
 NORM 700mA
 CR2 1000A

NOTES
 1. VOLTAGES ARE DC-MEASURED WITH A DIGITAL VOLT METER OR OSCILLOSCOPE WITHOUT INPUT SIGNAL. () IS INVERT MODE
 2. UNLESS OTHERWISE SPECIFIED
 ALL RESISTANCE VALUES ARE IN OHM(Ω).
 ALL CAPACITORS ARE CERAMIC CAPACITOR
 ALL CAPACITANCE VALUES ARE IN pF(pF).
 ALL INDUCTANCE VALUES ARE IN μH(μH).
 ALL E-CAPACITORS ARE SHOWN IN THE FORM OF CAPACITANCE (μF)/RATED VOLTAGE (V).
 PP PLYPROPYLENE CAPACITOR

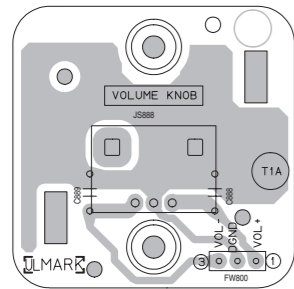
FROM CN315 OF GVA10061-A1

FROM CN316 OF GVA10061-A1

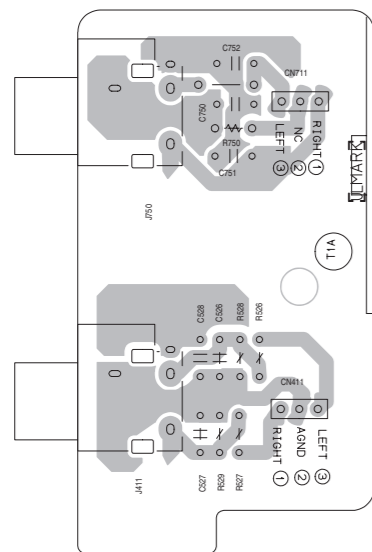
■ RDS board



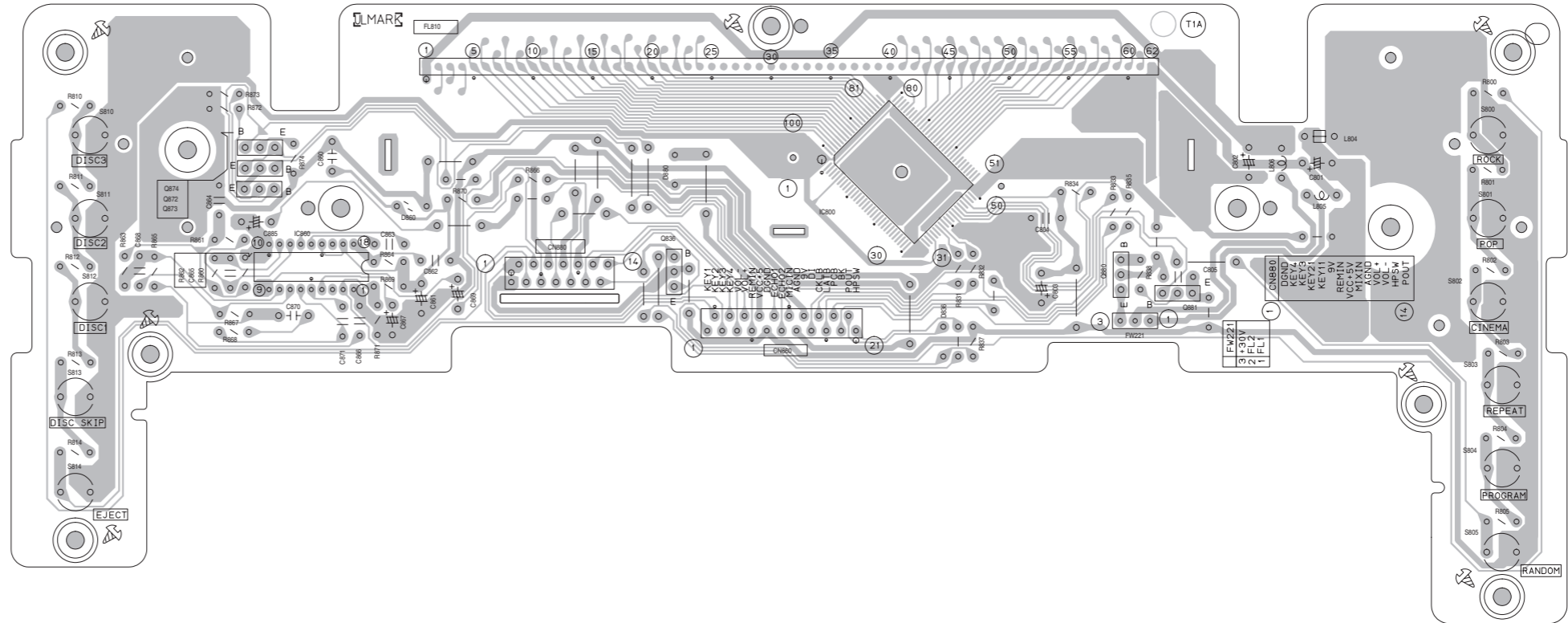
■ Volume board



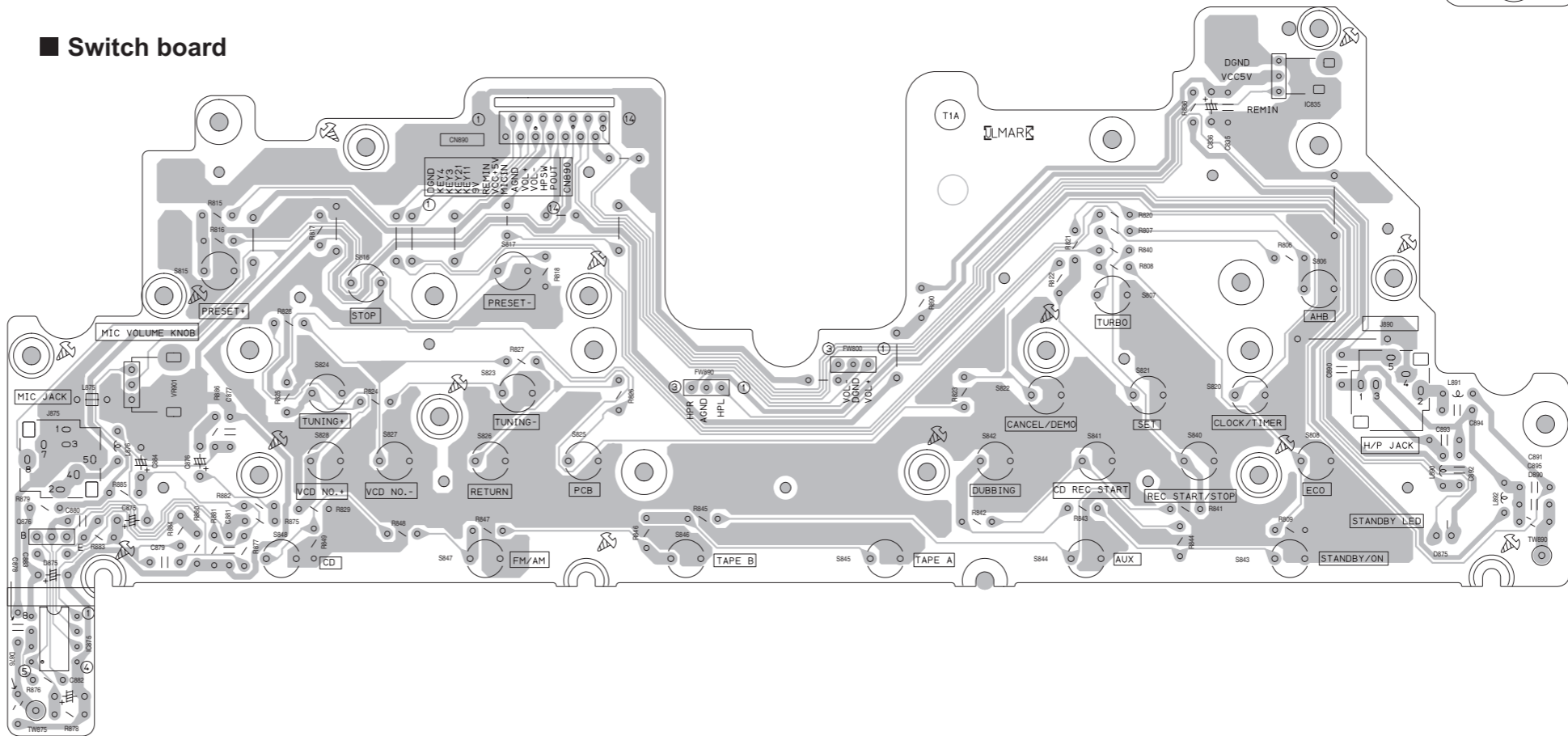
■ AUX & Surround board



■ LCD board

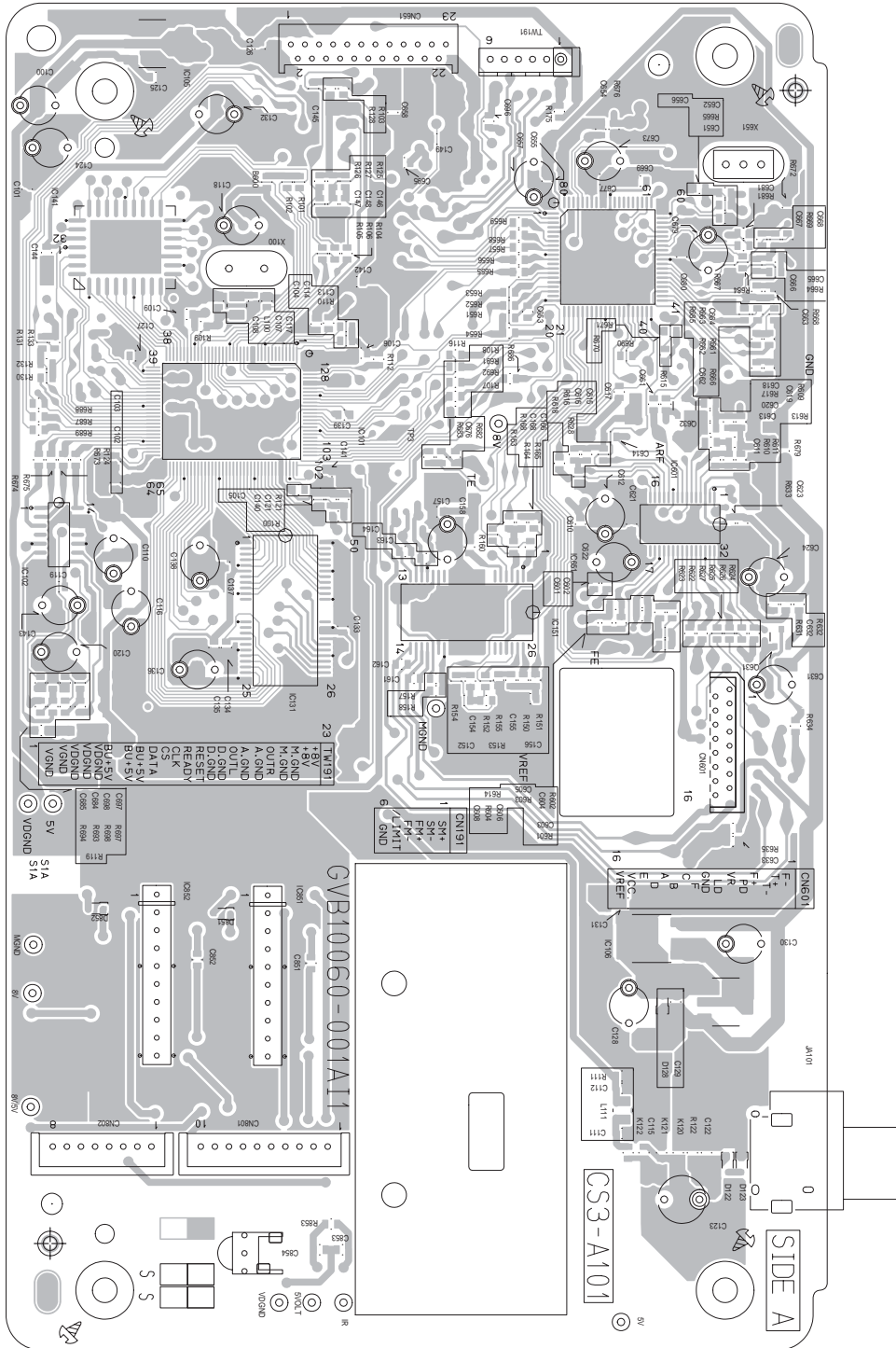


■ Switch board



< MEMO >

■ CD board (Forward side)



JVC

VICTOR COMPANY OF JAPAN, LIMITED

AV & MULTIMEDIA COMPANY AUDIO/VIDEO SYSTEMS CATEGORY 10-1, 1chome, Ohwatari-machi, Maebashi-city, 371-8543, Japan

(No.MB207SCH)



Printed in Japan
WPC