

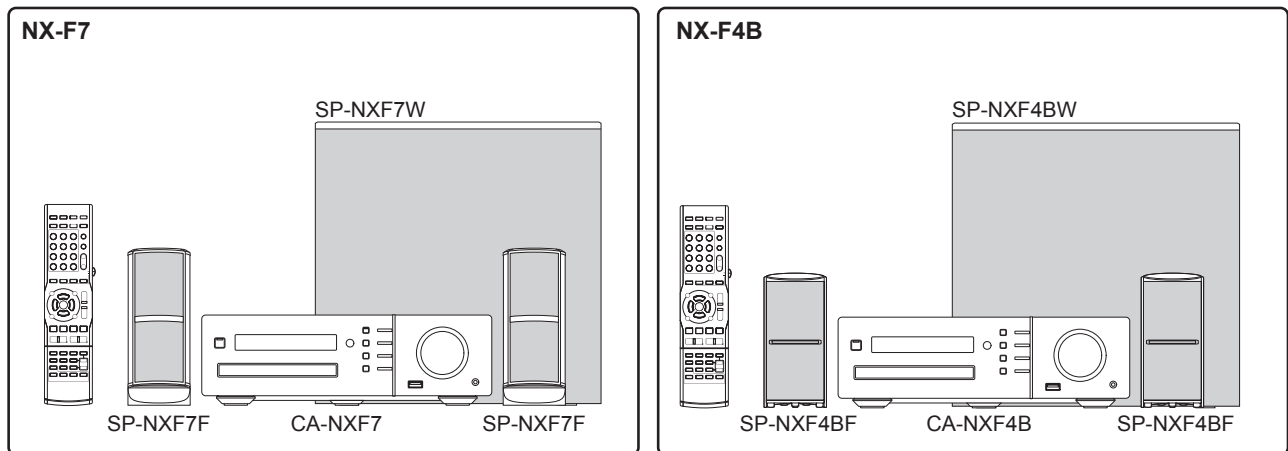
JVC

SCHEMATIC DIAGRAMS

COMPACT COMPONENT SYSTEM

**NX-F7B, NX-F7E, NX-F7EN, NX-F7EV
NX-F7EE, NX-F7UA, NX-F7US, NX-F7UB
NX-F7UF, NX-F7UT, NX-F4BB, NX-F4BE
NX-F4BEN, NX-F4BEV**

DVD-ROM No.SML2008Q2



HDMI



**MPEG-4
ASF PLAYBACK**

Digital Direct Progressive Scan

Radio Data System

(Except NX-F7EE)



(Only for NX-F7) (Only for NX-F7EE)

Lead free solder used in the board (material : Sn-Ag-Cu, melting point : 219 Centigrade)

Lead free solder used in the board (material : Sn-Cu, melting point : 230 Centigrade)

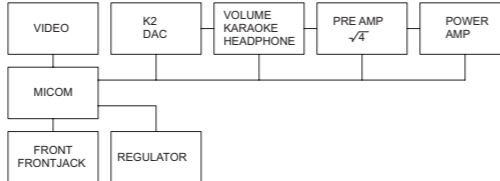
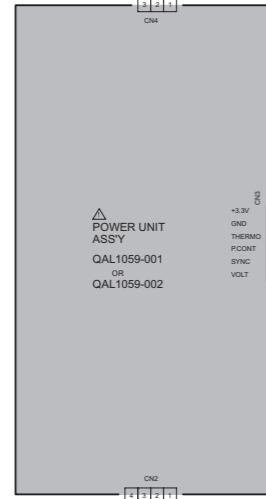
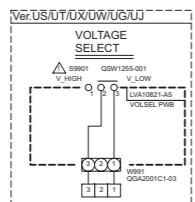
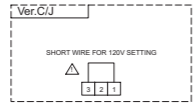
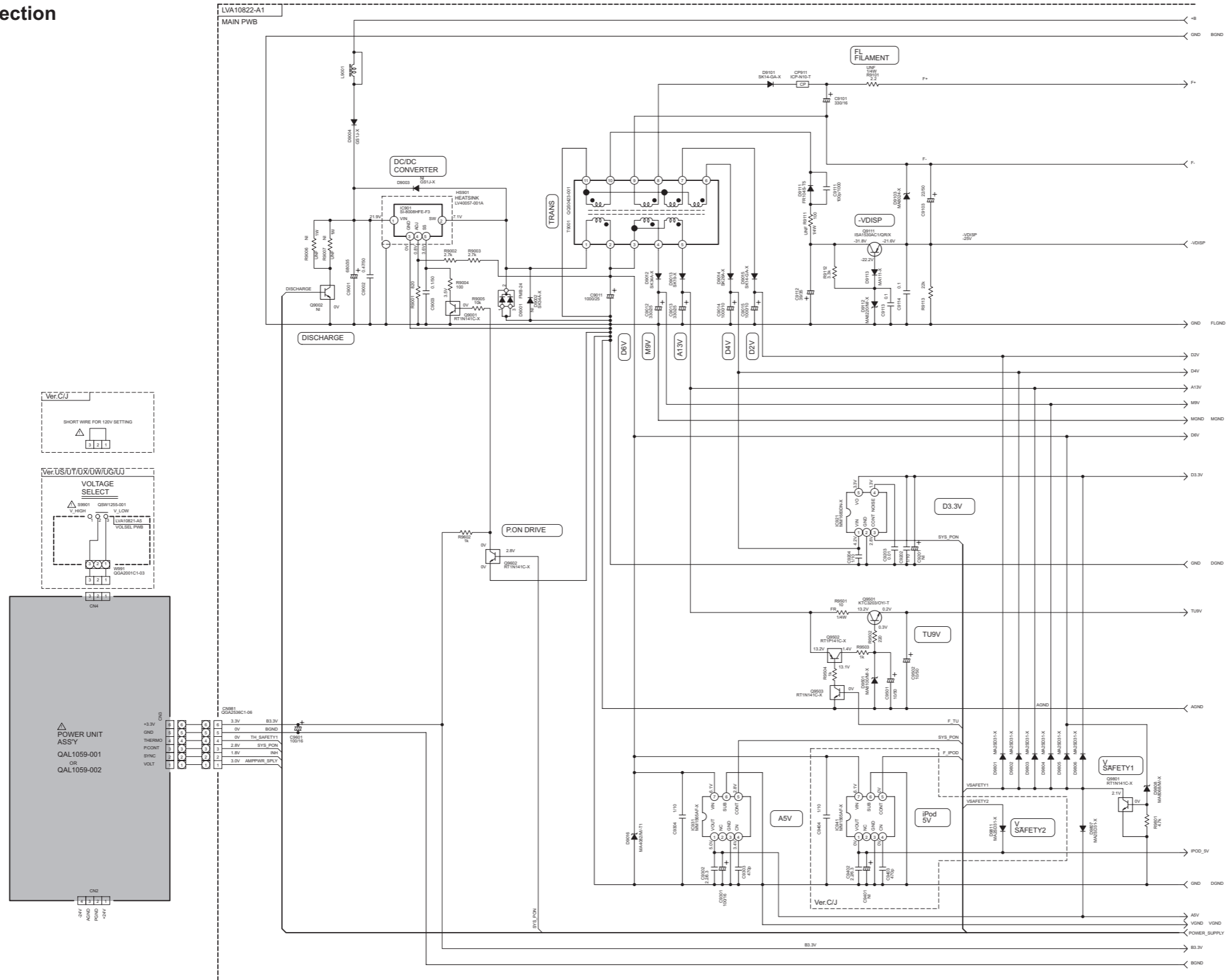
Contents

Block diagrams	2-1
Standard schematic diagrams	2-2
Printed circuit boards	2-14 to 16

In regard with component parts appearing on the silk-screen printed side (parts side) of the PWB diagrams, the parts that are printed over with black such as the resistor (■), diode (▣) and ICP (●) or identified by the "▲" mark nearby are critical for safety.

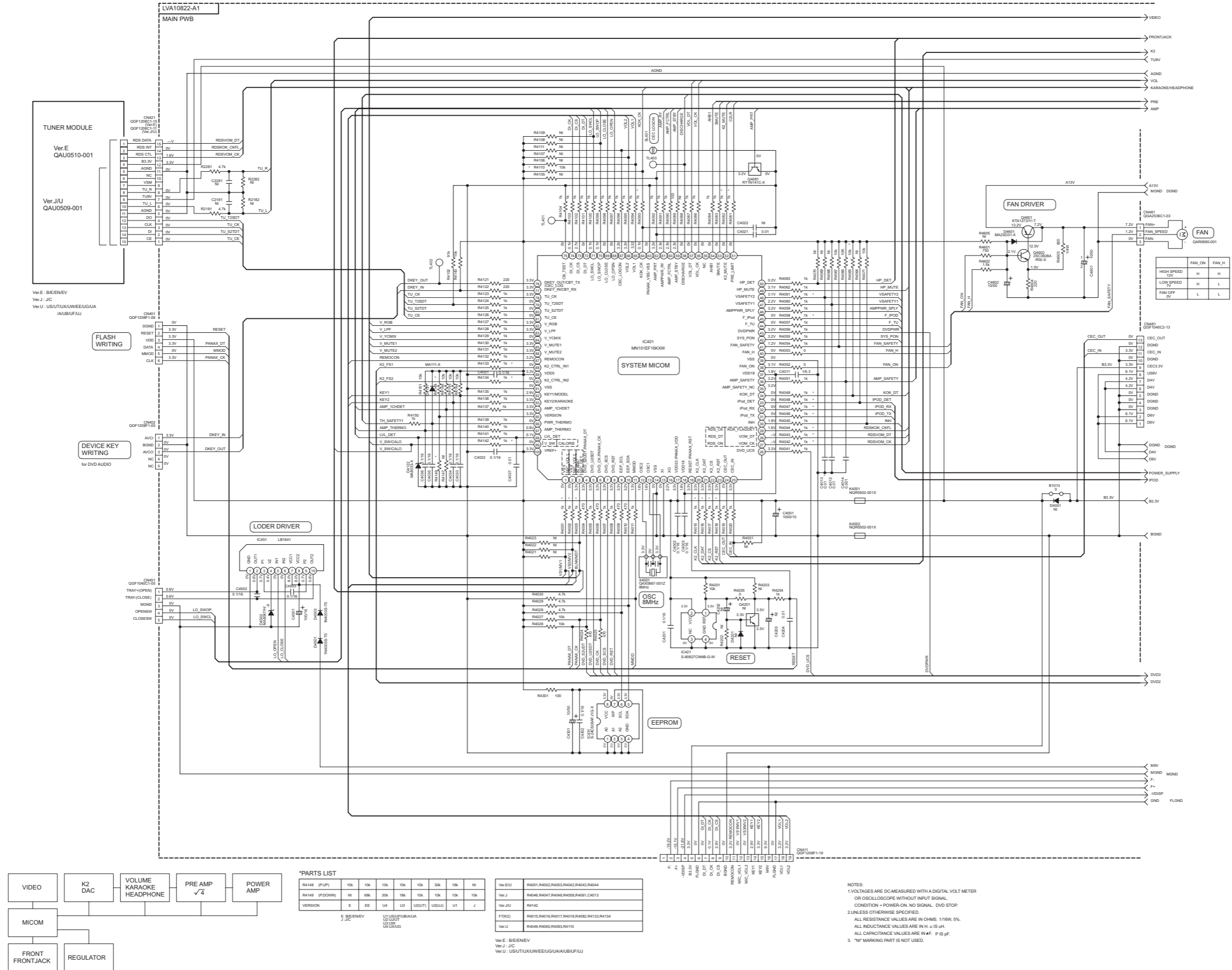
Standard schematic diagrams

Local regulator section

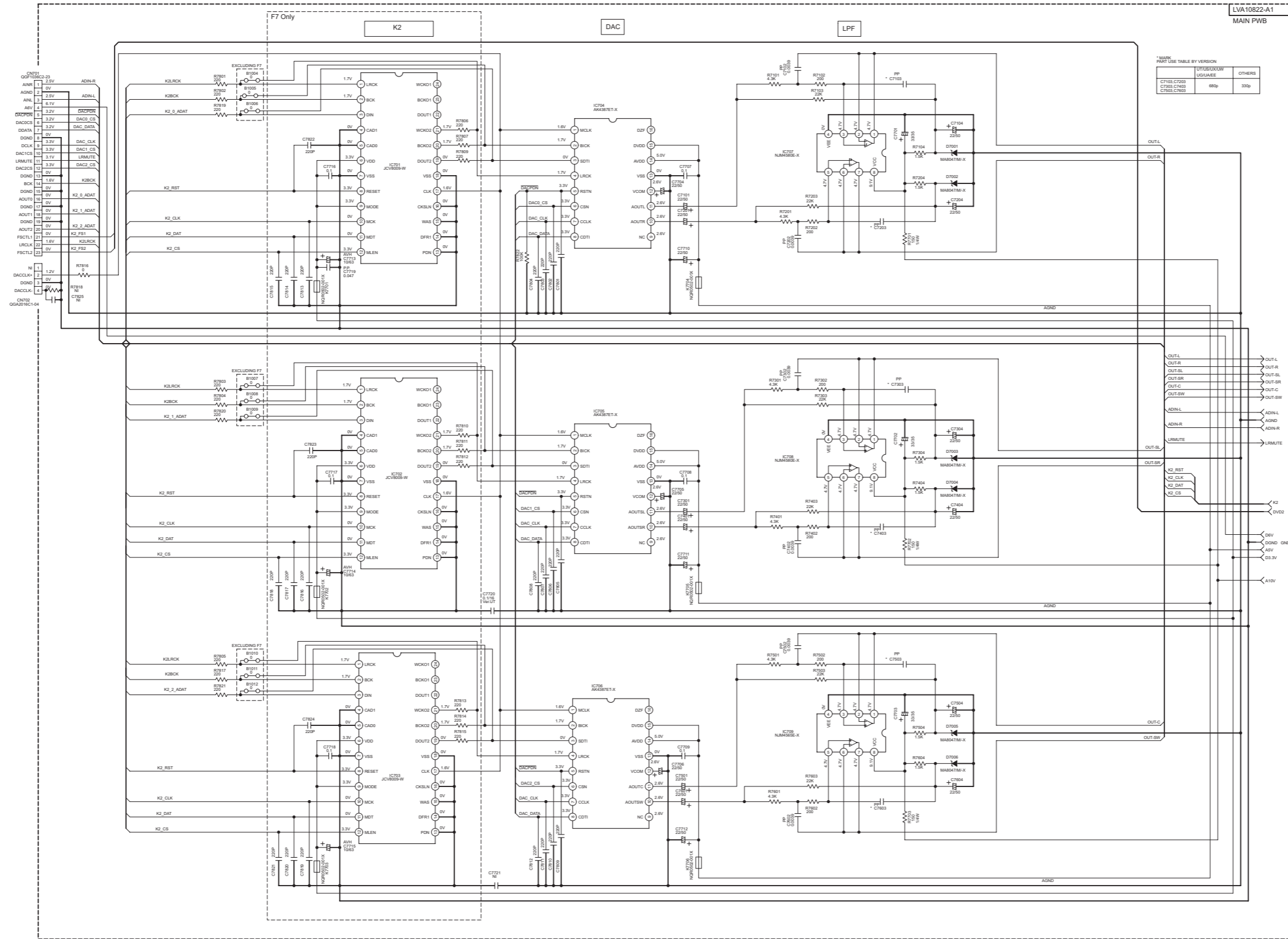


Parts are safety assurance parts.
When replacing those parts make
sure to use the specified one.

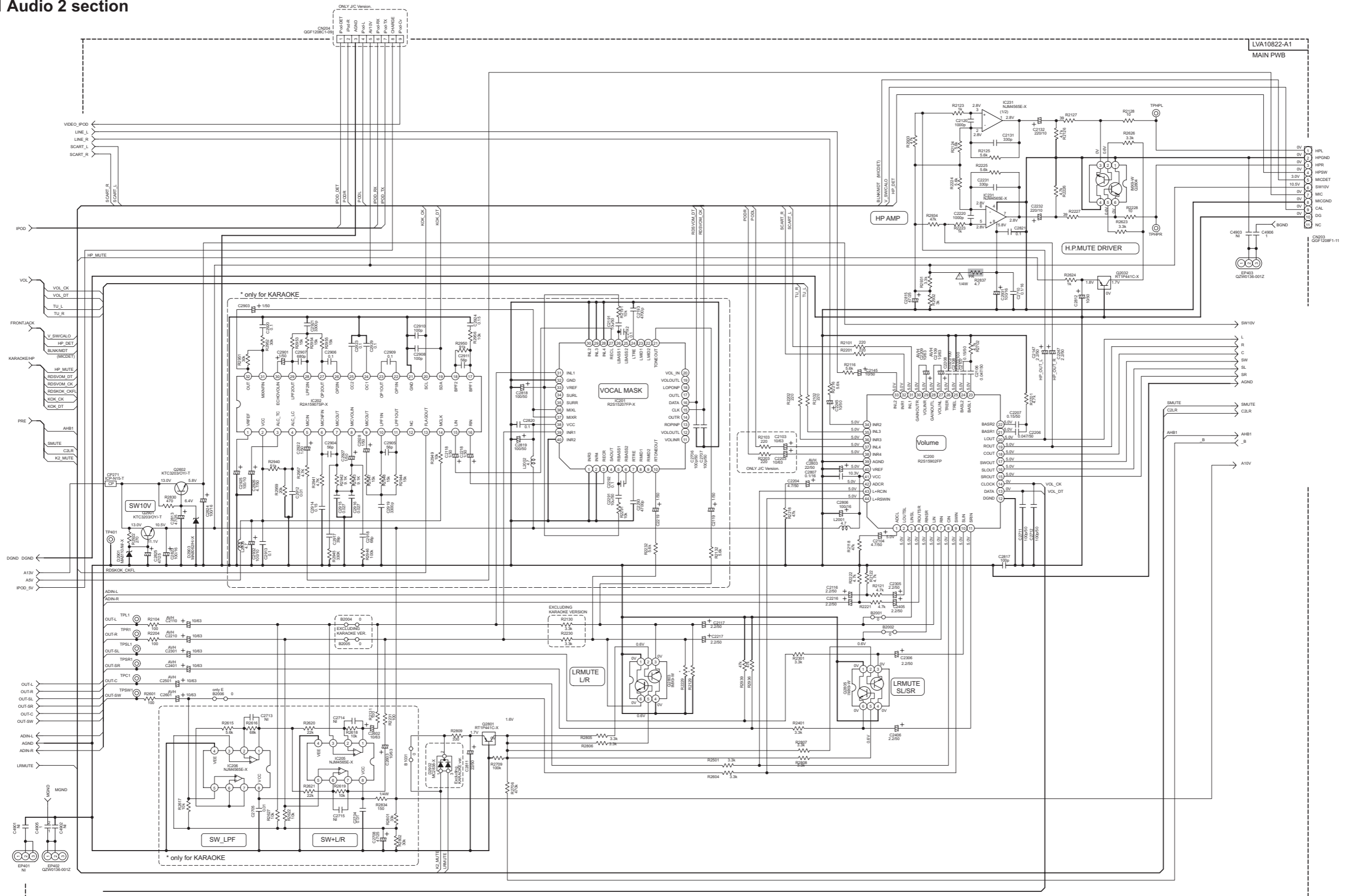
Micom section



■ Audio 1 section



■ Audio 2 section



NOTES: 1. VOLTAGES ARE DC-MEASURED WITH A DIGITAL VOLT METER OR OSCILLOSCOPE WITHOUT INPUT SIGNAL.
 CONDITION - POWER-ON, NO SIGNAL, DVD STOP.
 2. UNLESS OTHERWISE SPECIFIED.
 ALL RESISTANCE VALUES ARE IN OHMS, 1/16W, 5%.
 ALL INDUCTANCE VALUES ARE IN H, U IS uH.
 ALL CAPACITANCE VALUES ARE IN uF, P IS pF.

3. "NF" MARKING PART IS NOT USED.

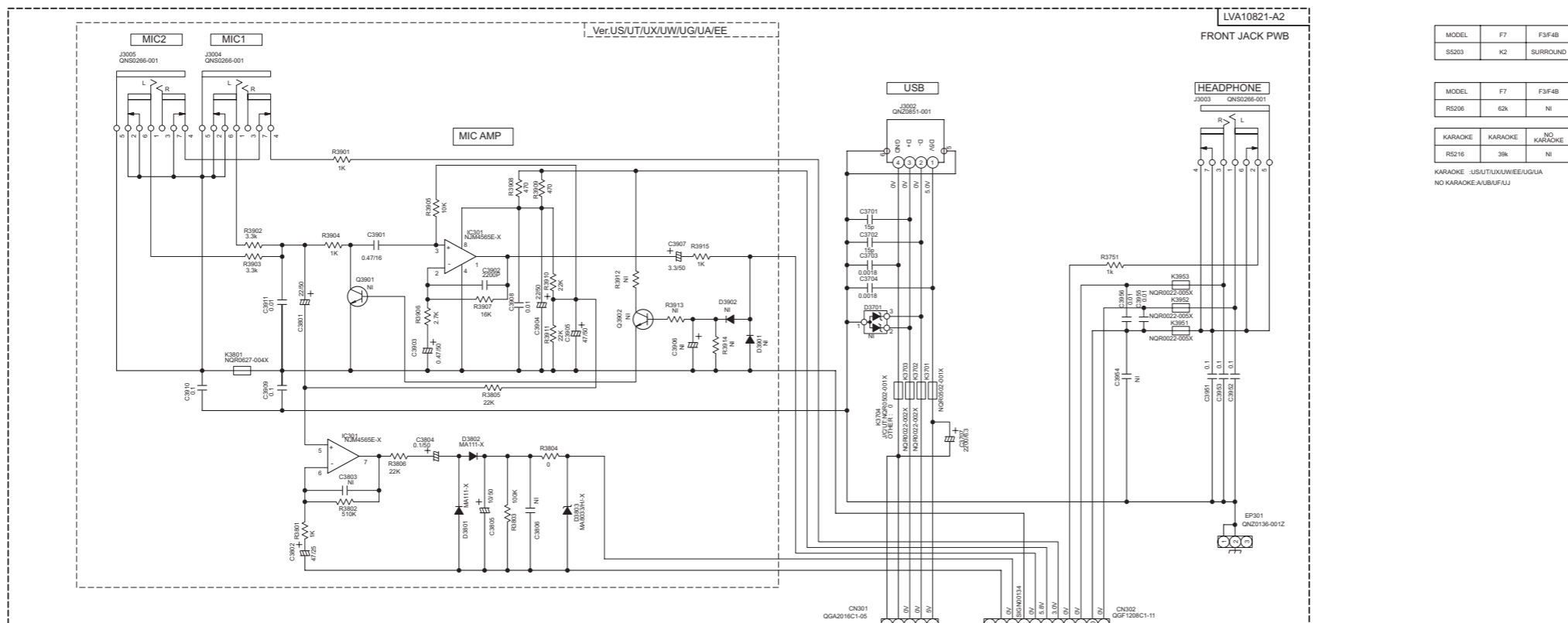
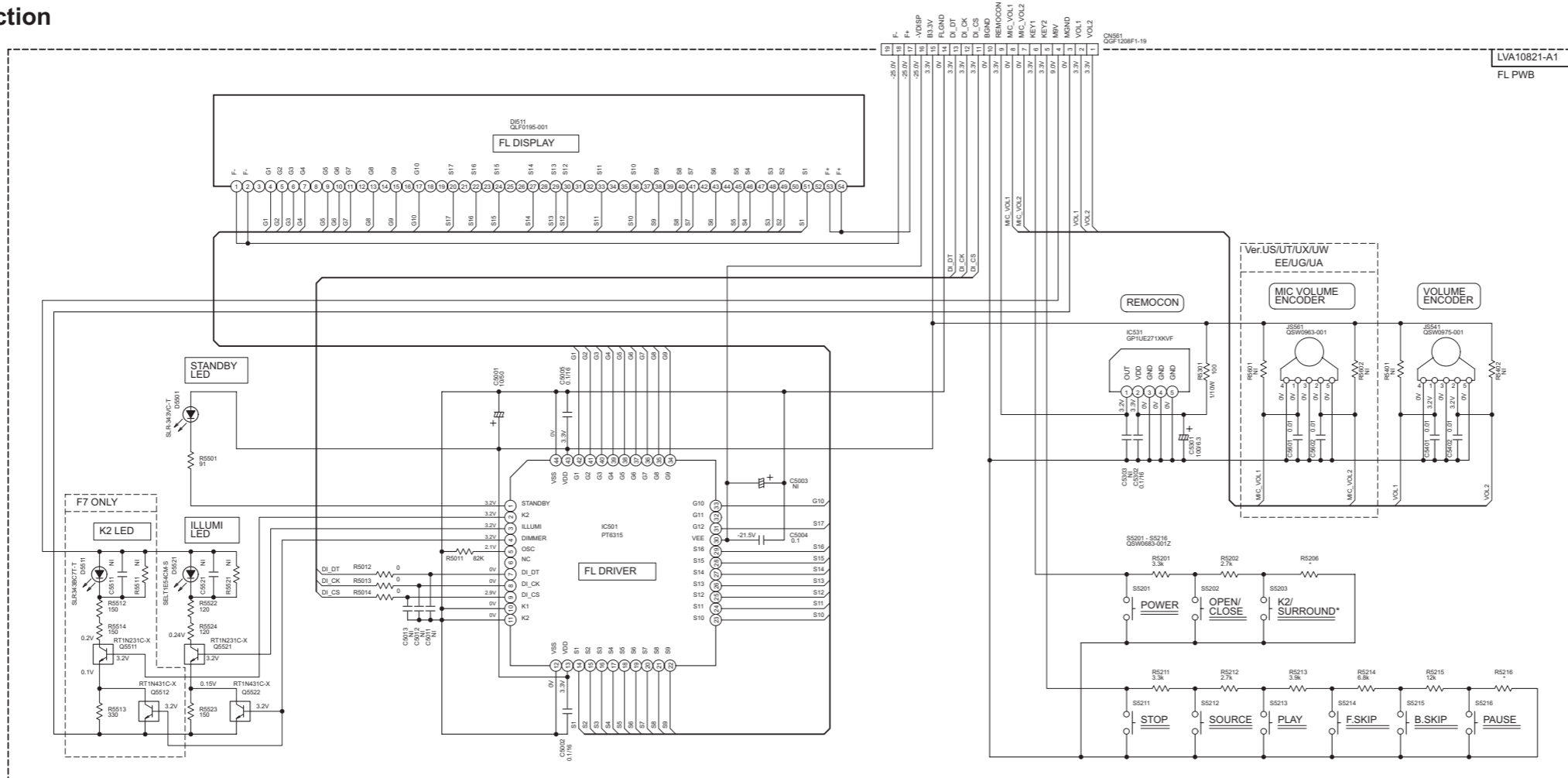
* only for KARAOKE
 Ver. EE,US,UF,UA,UT,UW,UX,UG

PART USE TABLE BY VERSION

	DF/ES/OL/UN	OTHERS
R2129,R2229	12K	47K
D2802	NOT USE	USE
B1931	USE	NOT USE
R2004,R2005	NOT USE	USE
R1130,R2230	NOT USE	USE

Parts are safety assurance parts.
 When replacing those parts make sure to use the specified one.

■ FL/Front jack section



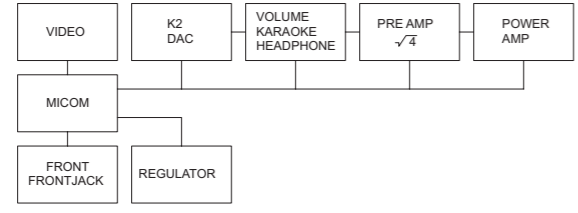
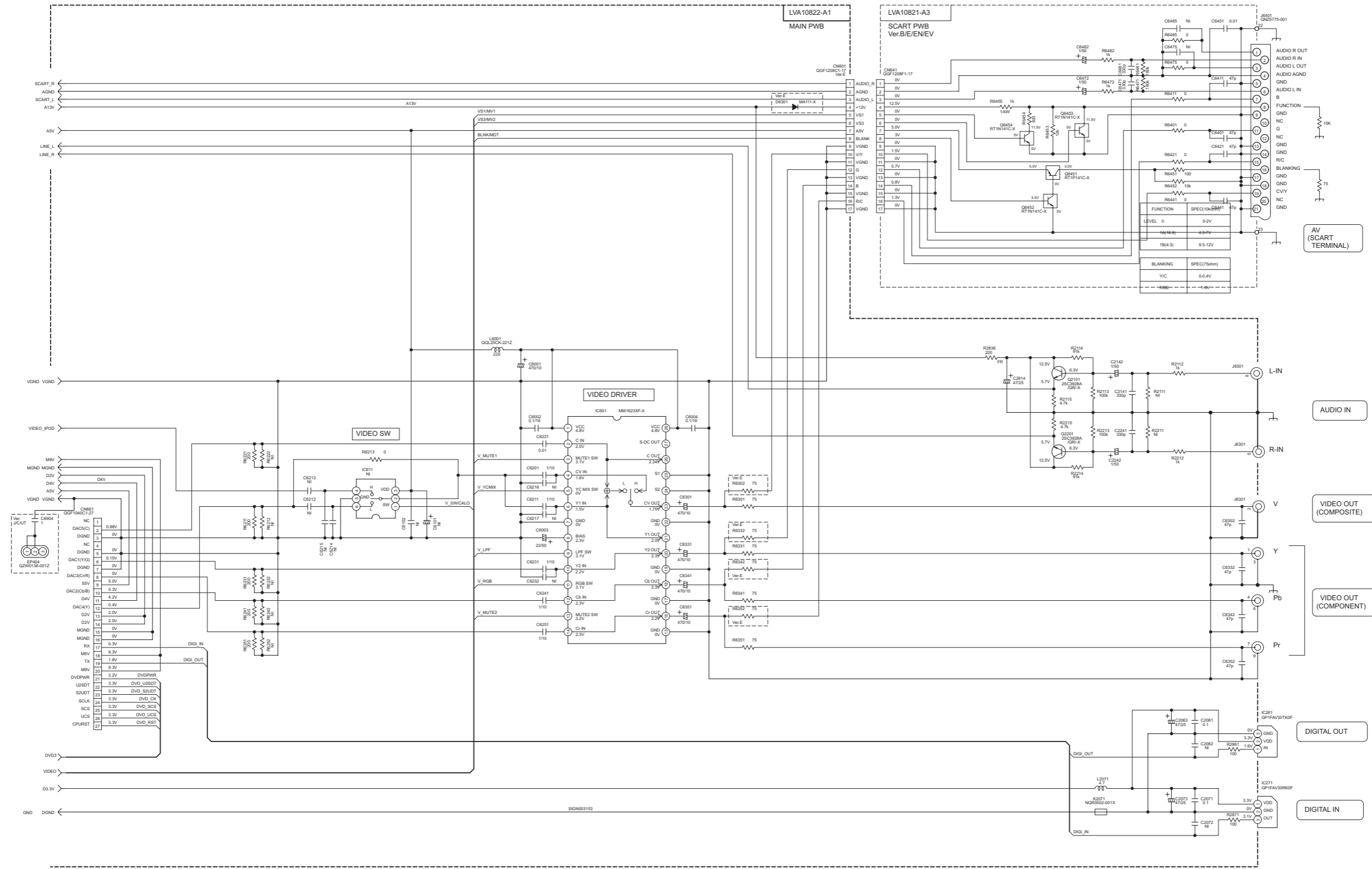
MODEL	F7	F3F4B
S5203	K2	SURROUND

MODEL	F7	F3F4B
RS208	62k	NI

KARAOKE	KARAOKE	NO KARAOKE
RS216	39k	NI

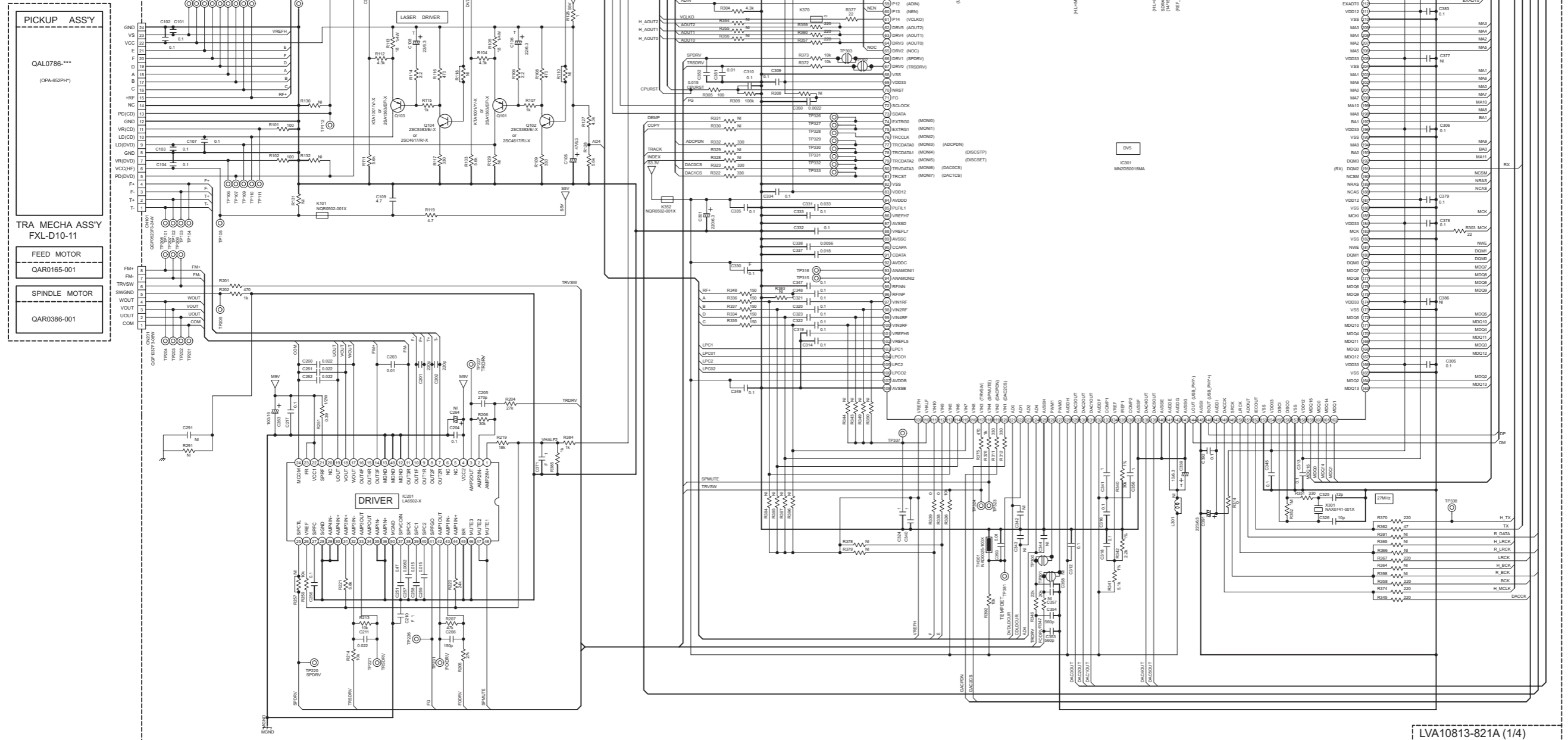
KARAOKE US/UT/UW/EE/UG/UA
NO KARAOKE A/UB/UF/UJ

Video section



NOTES:
 1. VOLTAGES ARE DC-MEASURED WITH A DIGITAL VOLT METER OR OSCILLOSCOPE WITHOUT INPUT SIGNAL.
 CONDITION: POWER-ON. SOURCE: DVD/CD/DVD STOP.
 2. UNLESS OTHERWISE SPECIFIED:
 ALL RESISTANCE VALUES ARE IN OHMS. 1/16W, 5%.
 ALL INDUCTANCE VALUES ARE IN H. u IS uH.
 ALL CAPACITANCE VALUES ARE IN F. p IS pF.
 3. "N" MARKING PART IS NOT USED.

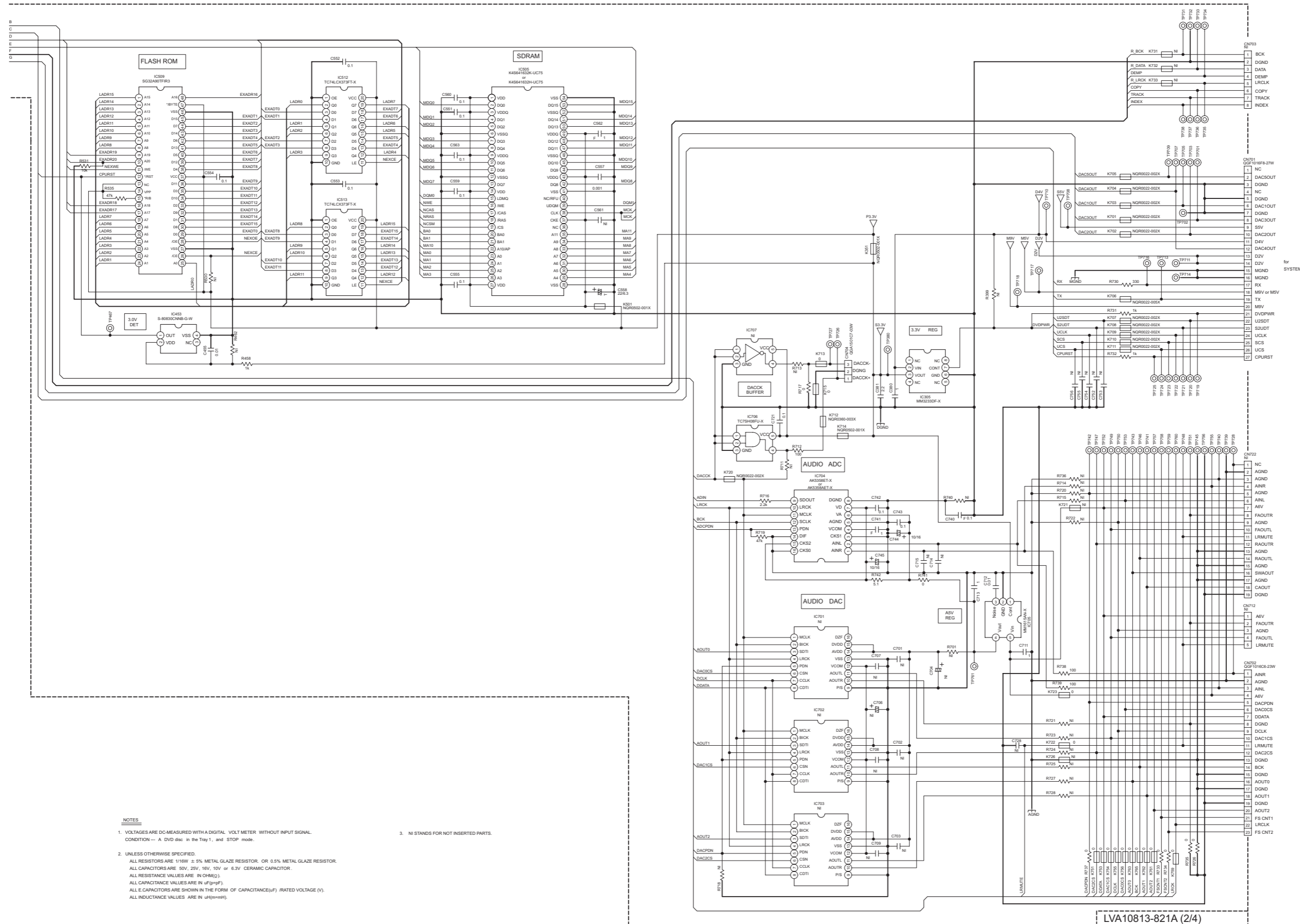
■ Front end 1 section



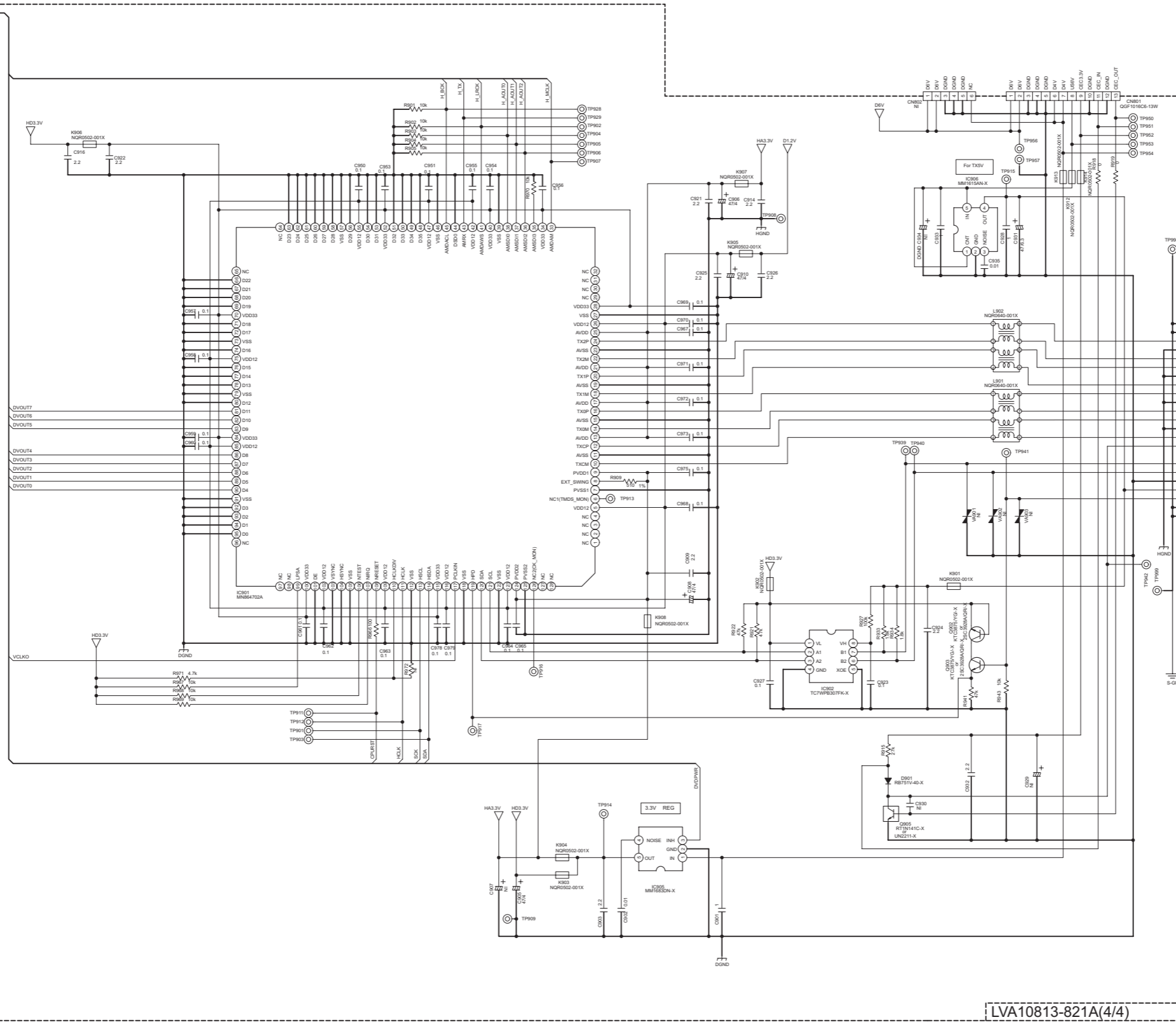
NOTES

1. VOLTAGES ARE DC-MEASURED WITH A DIGITAL VOLT METER. WITHOUT INPUT SIGNAL. CONDITION -- A DVD disc in the Tray 1, and STOP mode.
2. UNLESS OTHERWISE SPECIFIED:
ALL RESISTORS ARE 1/16W ± 5% METAL GLAZE RESISTOR. OR 0.5% METAL GLAZE RESISTOR.
ALL CAPACITORS ARE 50V, 25V, 16V, 10V or 6.3V CERAMIC CAPACITOR.
ALL RESISTANCE VALUES ARE IN OHM(Ω).
ALL CAPACITANCE VALUES ARE IN uF(μF).
ALL E-CAPACITORS ARE SHOWN IN THE FORM OF CAPACITANCE(μF) RATED VOLTAGE (V).
ALL INDUCTANCE VALUES ARE IN uH(μH).
3. NI STANDS FOR NOT INSERTED PARTS.

■ Front end 2 section



■ Front end 3 section

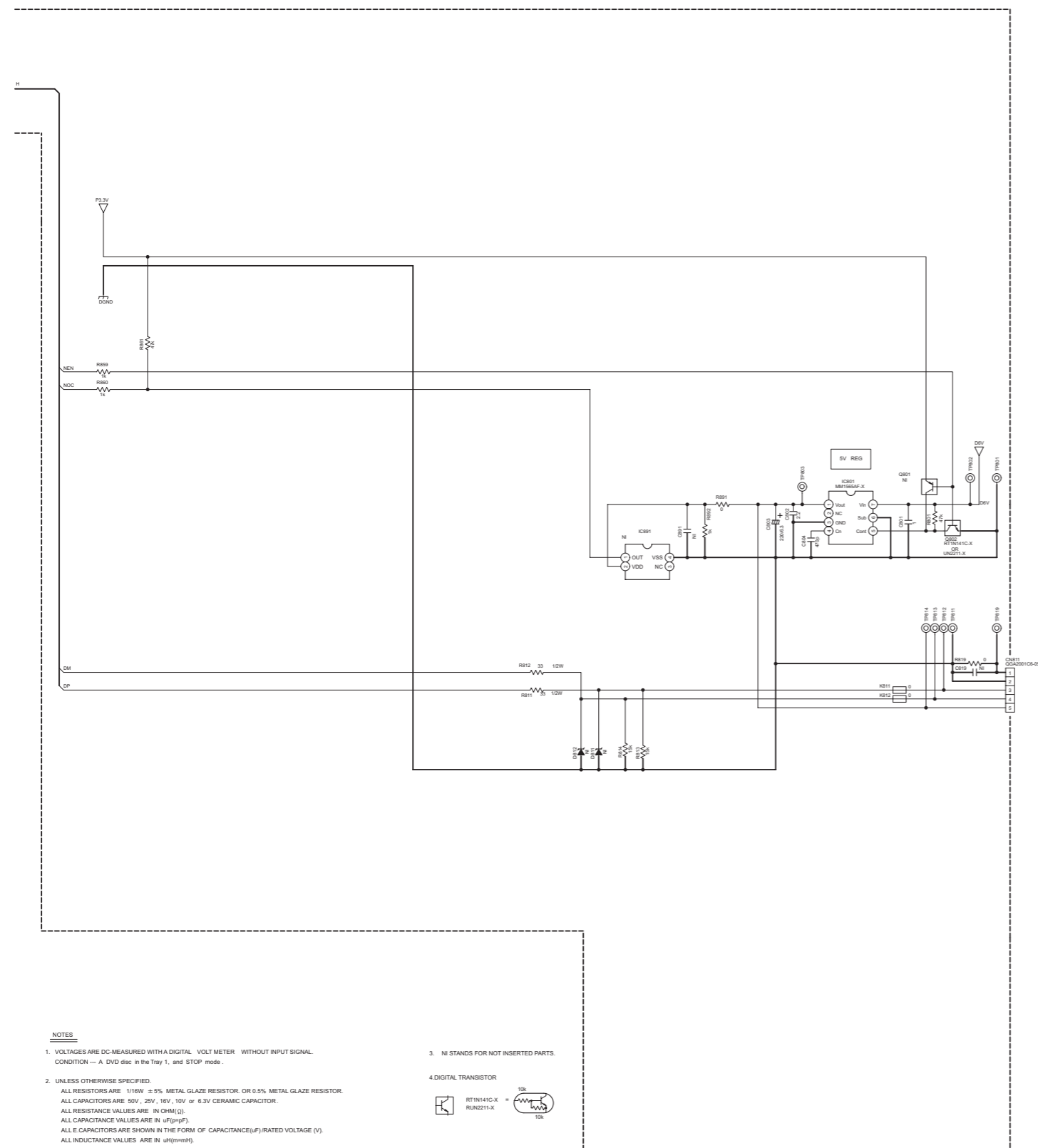


LVA10813-821A(4/4)

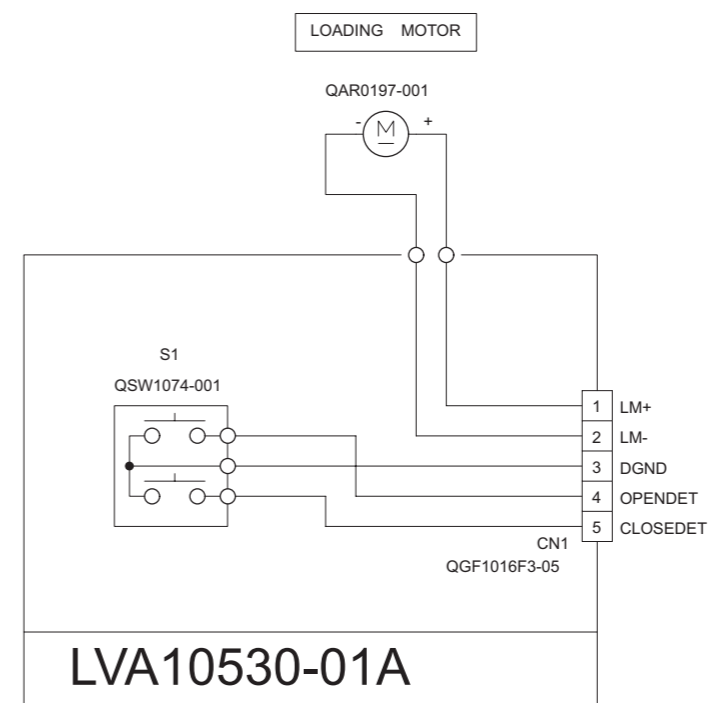
- NOTES**
- VOLTAGES ARE DC-MEASURED WITH A DIGITAL VOLT METER WITHOUT INPUT SIGNAL. CONDITION — A DVD disc in the Tray 1, and STOP mode.
 - UNLESS OTHERWISE SPECIFIED, ALL RESISTORS ARE 1/16W ± 5% METAL GLAZE RESISTOR, OR 0.5% METAL GLAZE RESISTOR. ALL CAPACITORS ARE 50V, 25V, 16V, 10V or 6.3V CERAMIC CAPACITOR. ALL RESISTANCE VALUES ARE IN OHMS (Ω). ALL CAPACITANCE VALUES ARE IN pF (pF). ALL CAPACITANCE VALUES ARE SHOWN IN THE FORM OF CAPACITANCE (pF) RATED VOLTAGE (V). ALL INDUCTANCE VALUES ARE IN μH (μH).
 - NI STANDS FOR NOT INSERTED PARTS.
 - DIGITAL TRANSISTOR



Front end 4 section



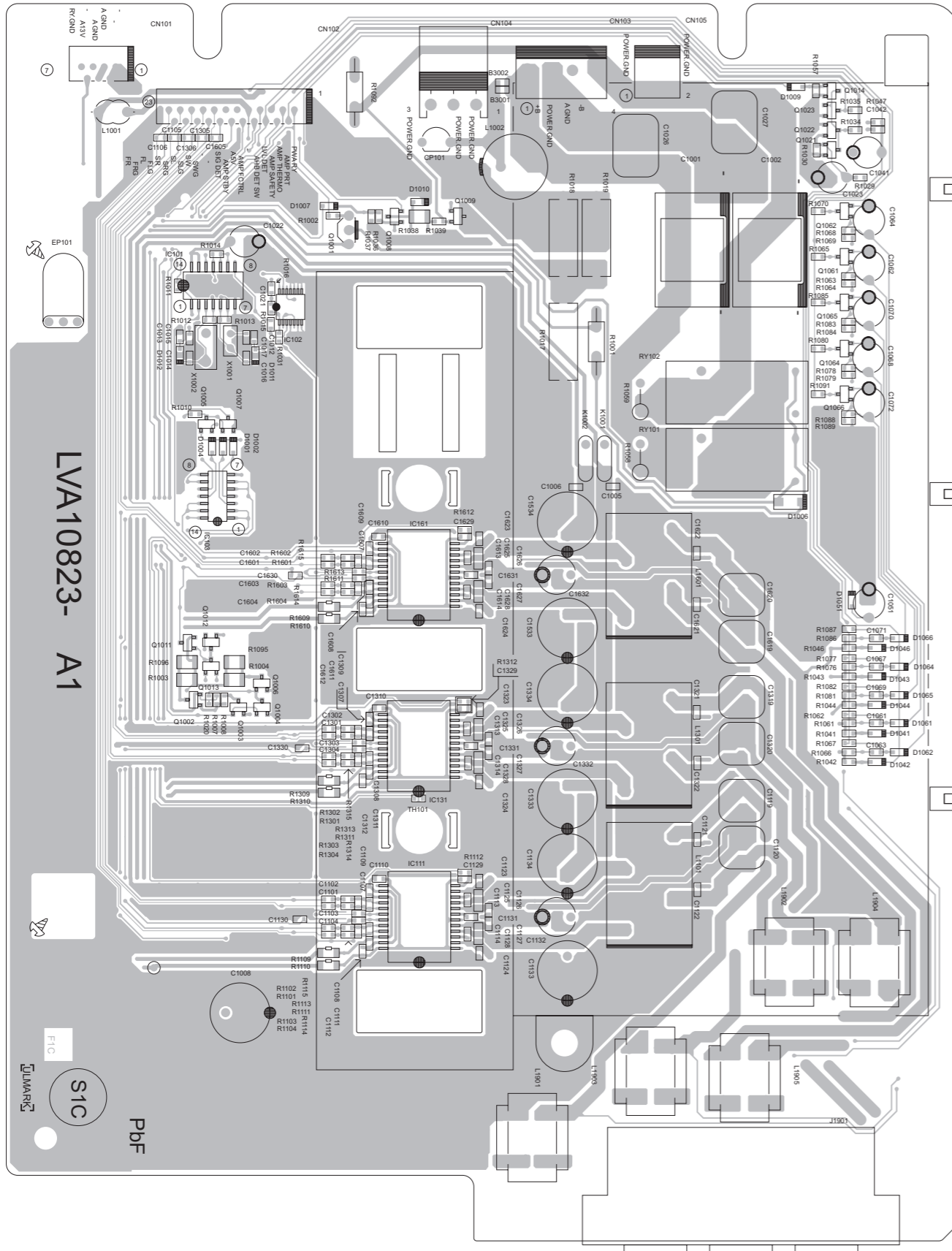
Loader section



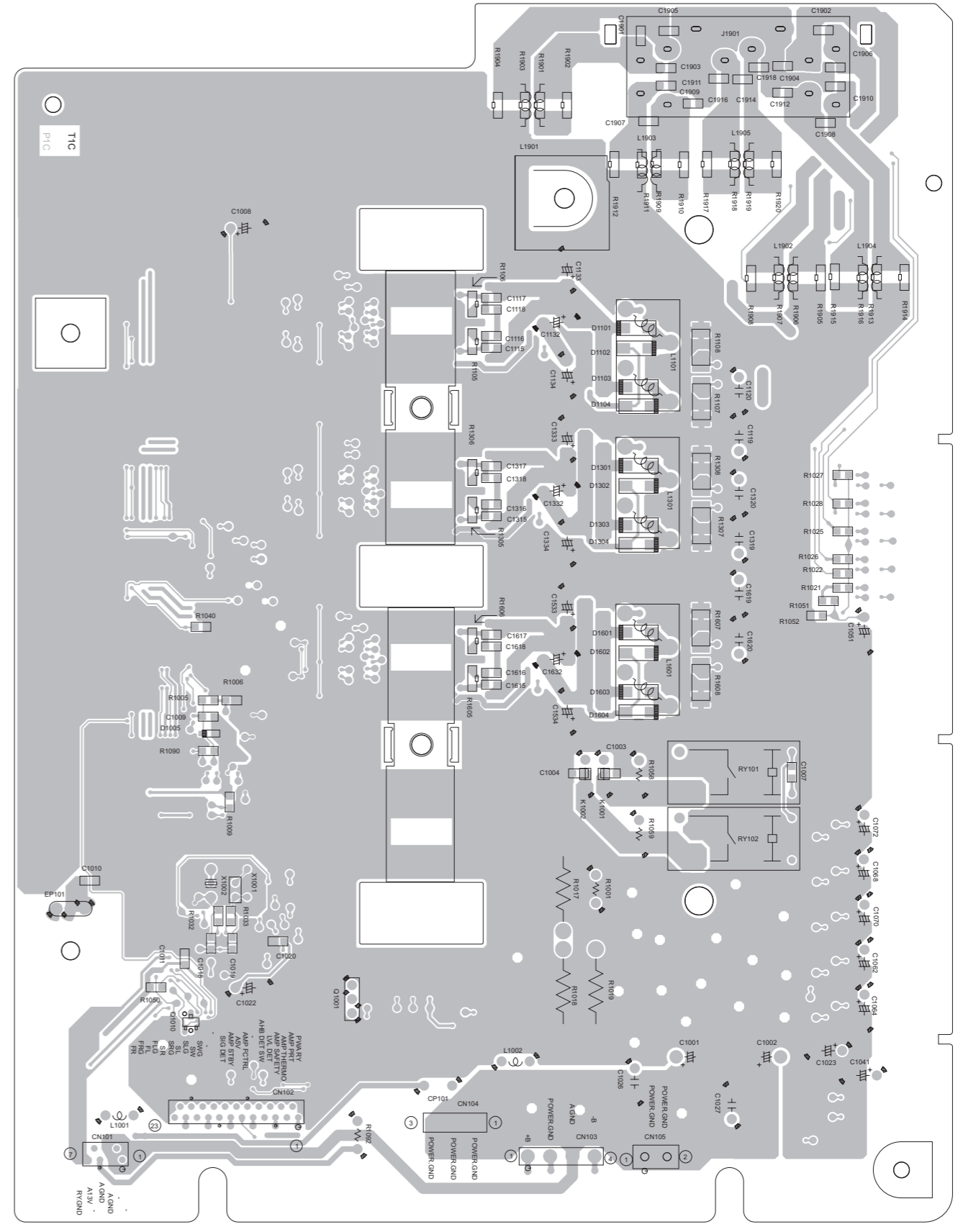
■ Amp board Lead free solder used in the board (material : Sn-Ag-Cu, melting point : 219 Centigrade)

Lead free solder used in the board (material : Sn-Cu, melting point : 230 Centigrade)

forward side

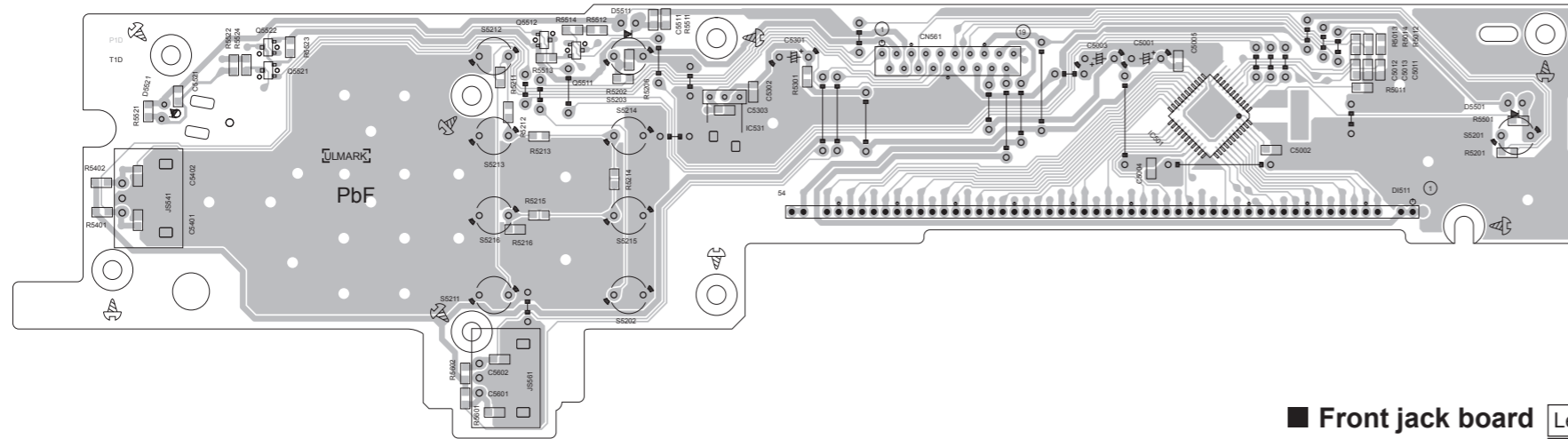


reverse side



■ **Front board** Lead free solder used in the board (material : Sn-Ag-Cu, melting point : 219 Centigrade)

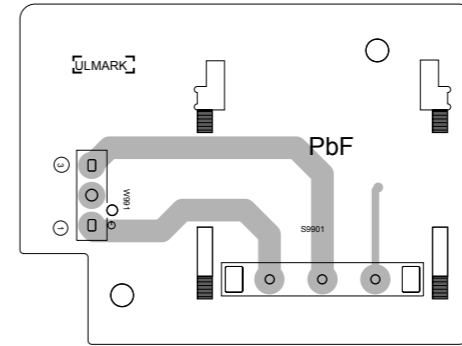
Lead free solder used in the board (material : Sn-Cu, melting point : 230 Centigrade)



■ **Voltage select board**

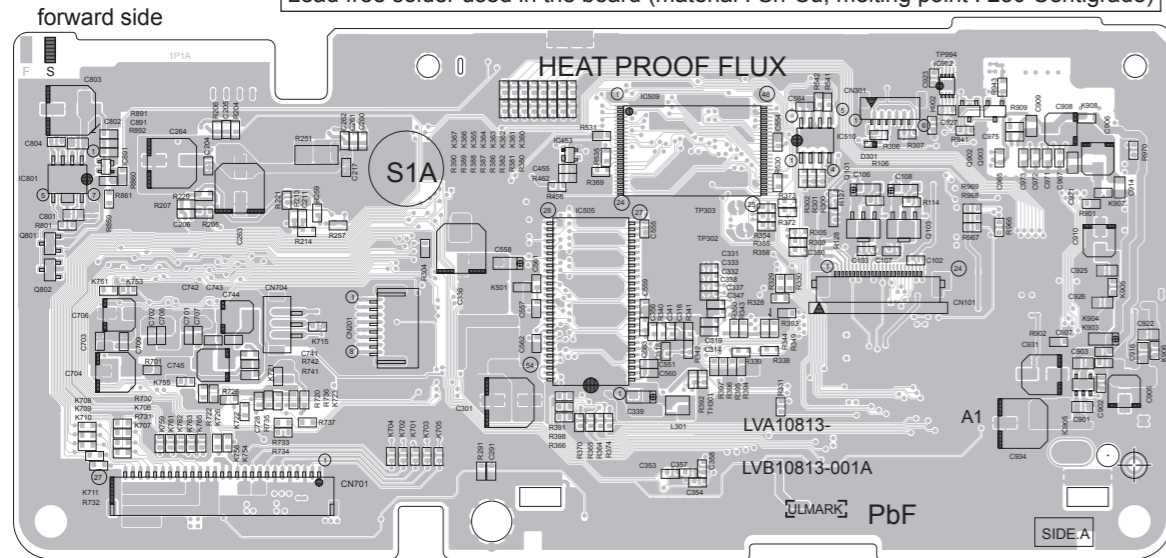
Lead free solder used in the board (material : Sn-Ag-Cu, melting point : 219 Centigrade)

Lead free solder used in the board (material : Sn-Cu, melting point : 230 Centigrade)



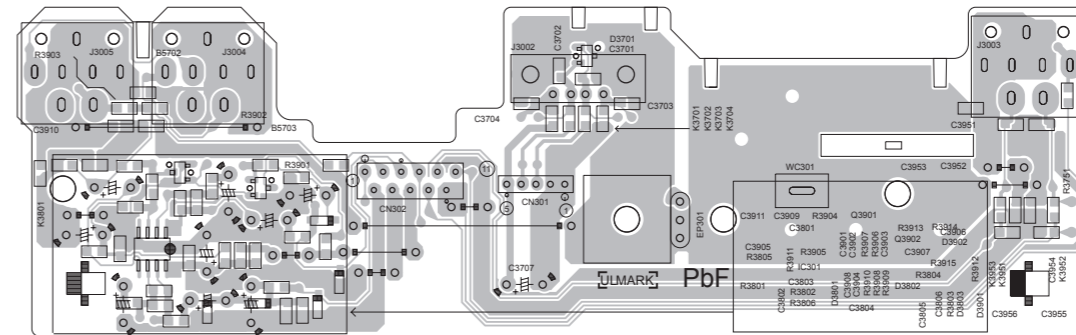
■ **Front end board** Lead free solder used in the board (material : Sn-Ag-Cu, melting point : 219 Centigrade)

Lead free solder used in the board (material : Sn-Cu, melting point : 230 Centigrade)



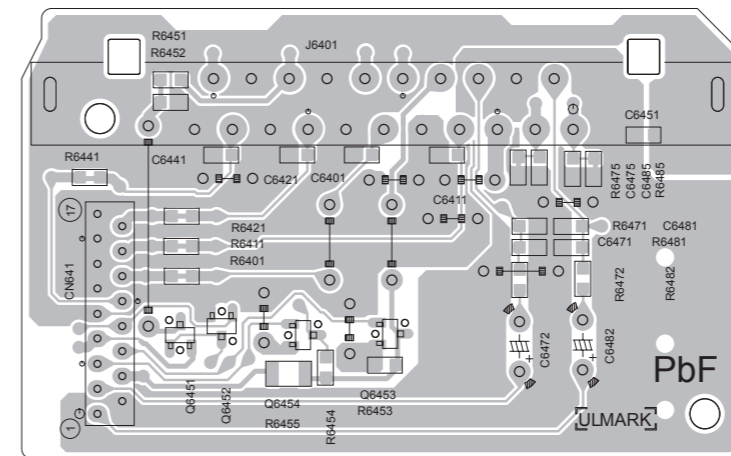
■ **Front jack board** Lead free solder used in the board (material : Sn-Ag-Cu, melting point : 219 Centigrade)

Lead free solder used in the board (material : Sn-Cu, melting point : 230 Centigrade)

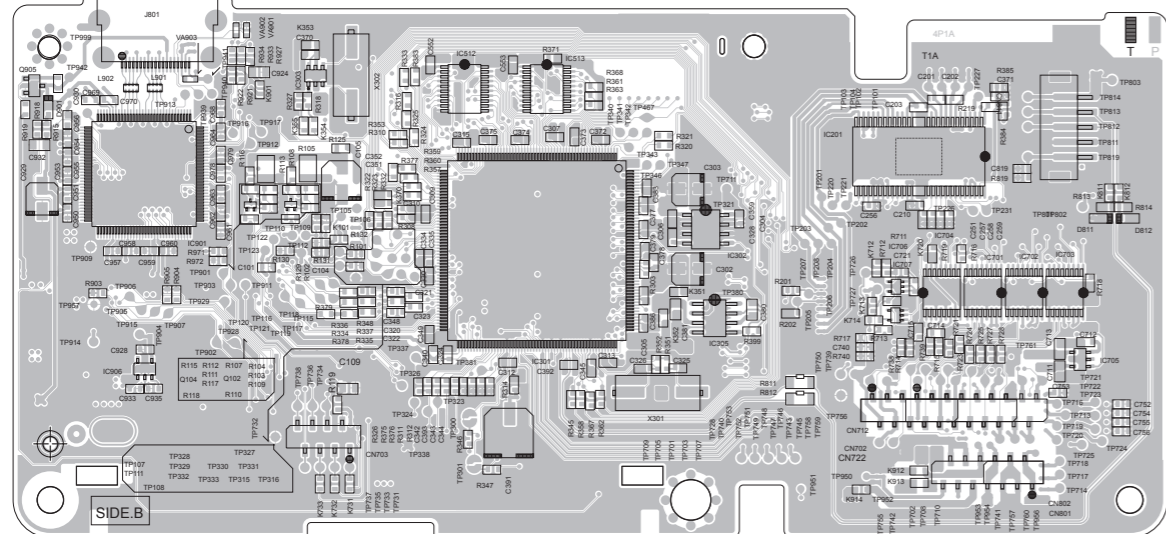


■ **SCART board** Lead free solder used in the board (material : Sn-Ag-Cu, melting point : 219 Centigrade)

Lead free solder used in the board (material : Sn-Cu, melting point : 230 Centigrade)

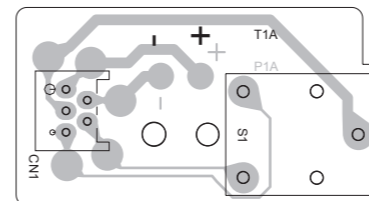


reverse side



■ **Loader board** Lead free solder used in the board (material : Sn-Ag-Cu, melting point : 219 Centigrade)

Lead free solder used in the board (material : Sn-Cu, melting point : 230 Centigrade)



< MEMO >



Victor Company of Japan, Limited

Audio/Video Systems Division 10-1, 1chome, Ohwatari-machi, Maebashi-city, 371-8543, Japan