

JVC



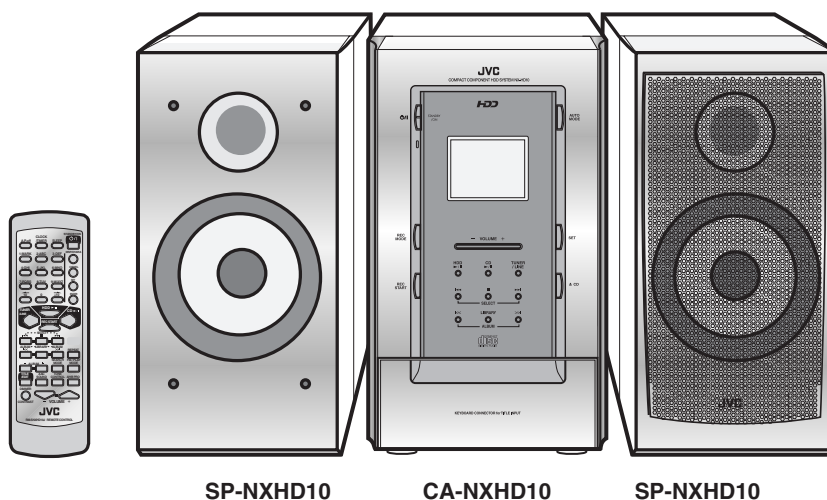
SCHEMATIC DIAGRAMS

COMPACT COMPONENT HDD SYSTEM

NX-HD10

CD-ROM No.SML200209

Area Suffix
 J ----- U.S.A.



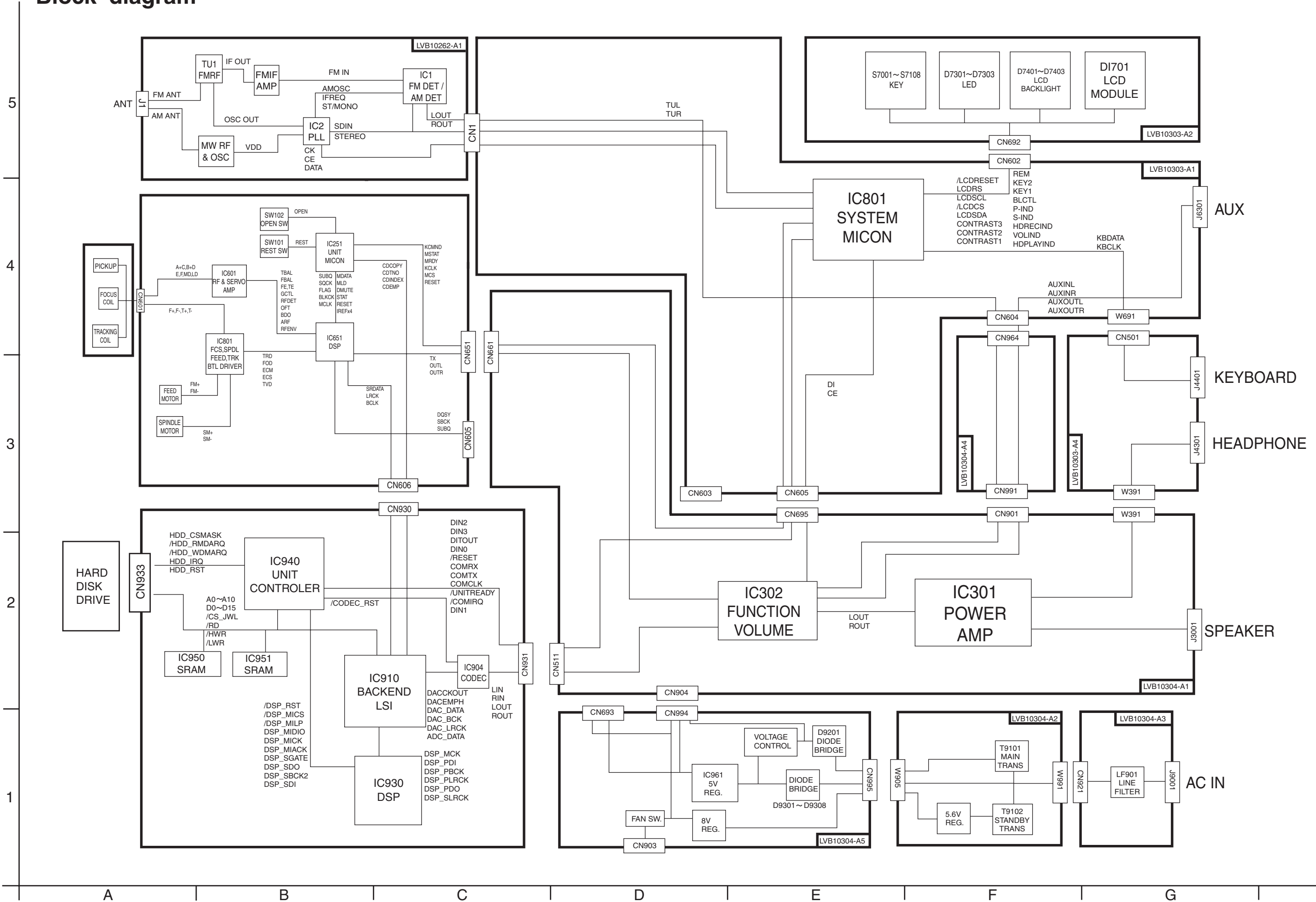
HDD

COMPACT
disc
 DIGITAL AUDIO

Contents

Block diagram	2-1
Standard schematic diagrams	2-2
Printed circuit boards	2-7~10

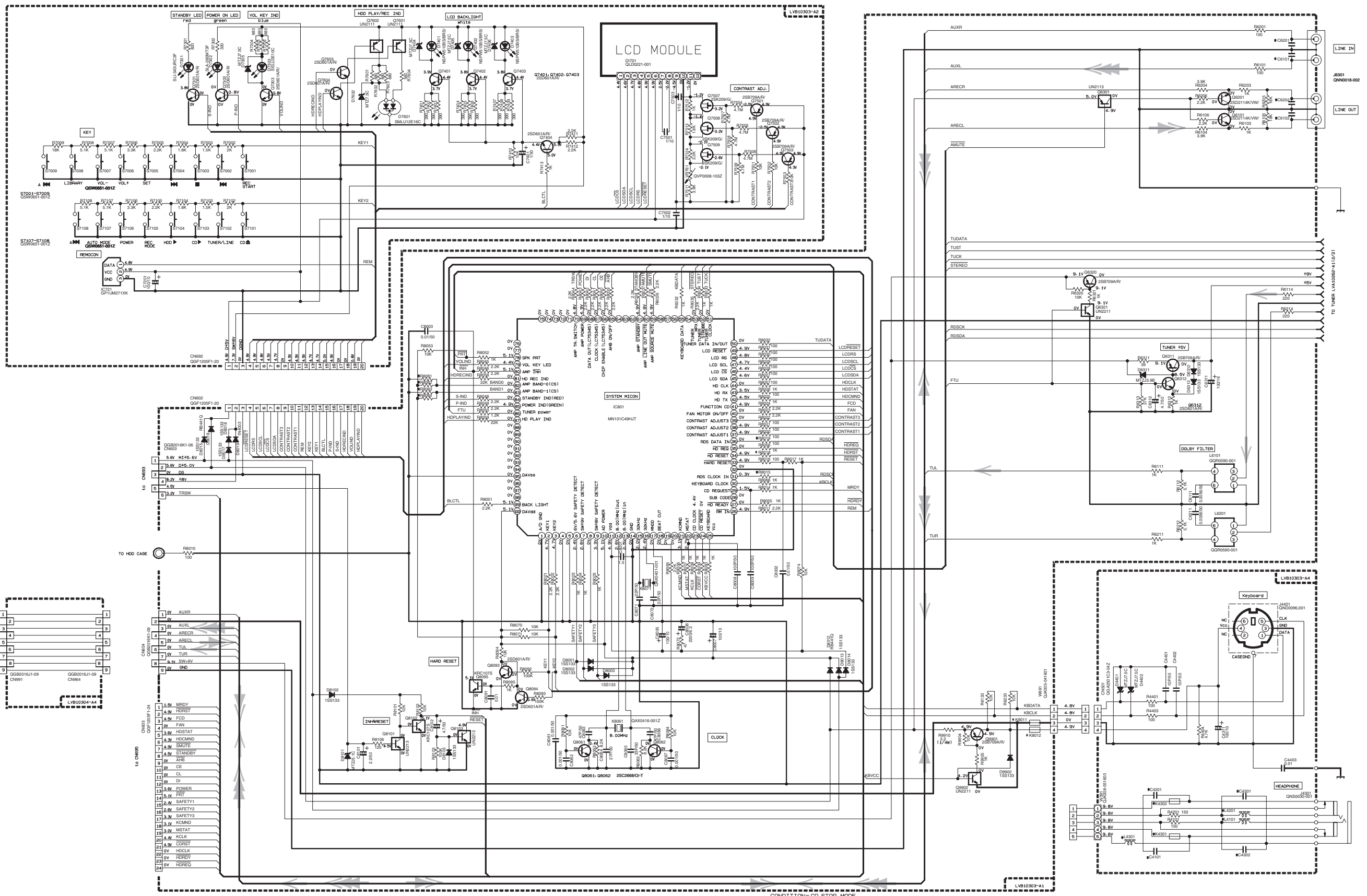
Block diagram



Standard schematic diagrams

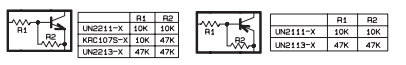
LCD & Key control section

5
4
3
2
1

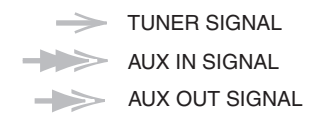


MARKS

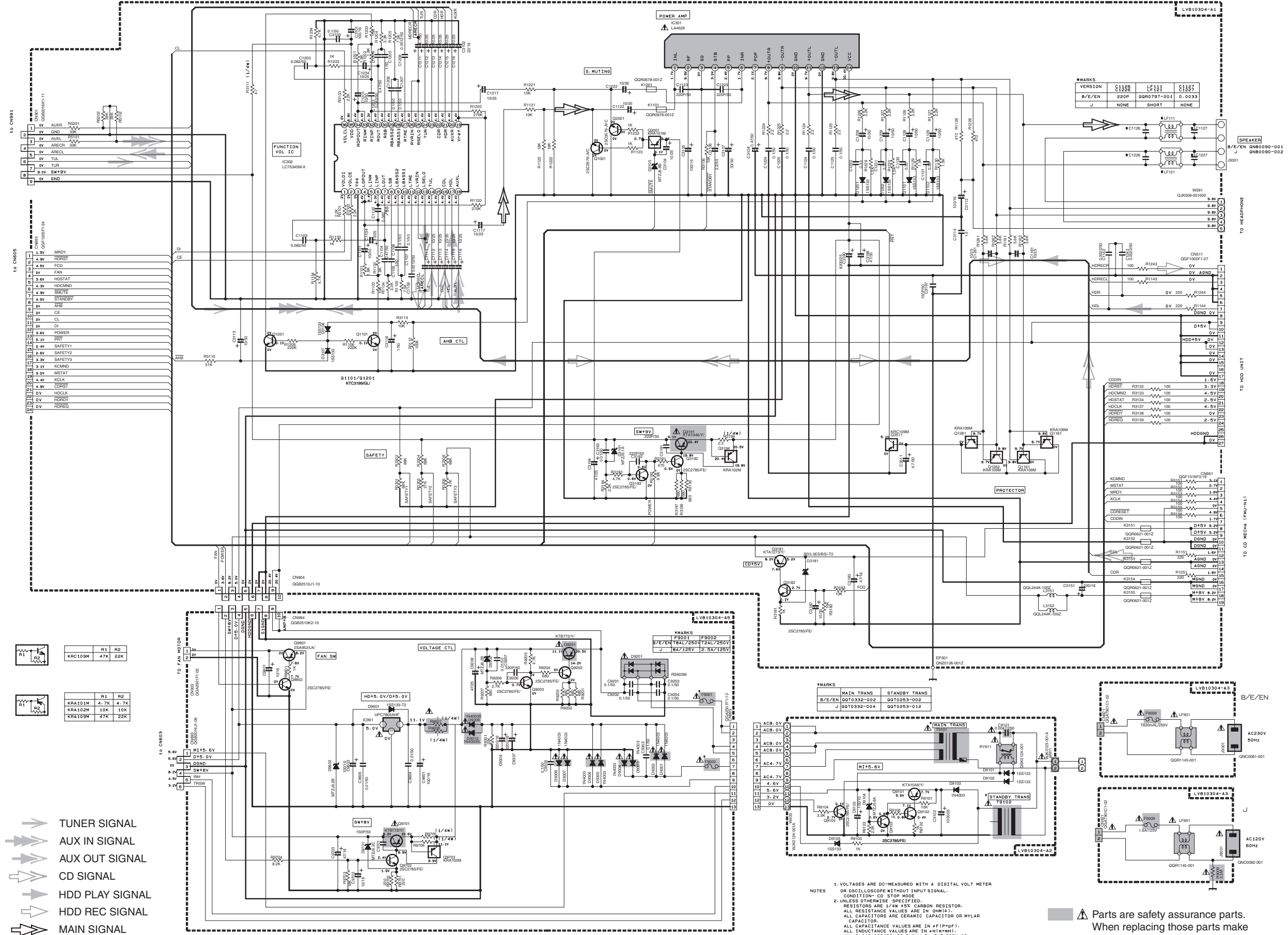
VERSION	REF. NO.	R0801	R0802	R0803	R0804	R0810	C0101	C0102	L4101	C4101	C4102	K4301	K4302	L4301
B/V/EN	J	10K	NONE	NONE	2.2K	1K	100P	100P	47	330P	470P	GG0621-0012	47K	47K



CONDITION-CD STOP MODE
2. UNLESS OTHERWISE SPECIFIED.
RESISTORS ARE 1/16W 5% METAL GLAZE RESISTOR.
ALL RESISTANCE VALUES ARE IN OHM (Ω).
ALL CAPACITANCE VALUES ARE IN PICO (PF).
ALL CAPACITANCE VALUES ARE IN MICRO (μF).
ALL INDUCTANCE VALUES ARE IN MILLI (MH).
ALL E-CAPACITORS ARE SHOWN IN THE FORM RESET OF INH CAPACITANCE (1/F)/RATED VOLTAGE (V).



Power amplifier / Power supply section



- TUNER SIGNAL
- AUX IN SIGNAL
- AUX OUT SIGNAL
- CD SIGNAL
- HDD PLAY SIGNAL
- HDD REC SIGNAL
- MAIN SIGNAL

	R1	R2
	KRC109M	47K 28K

	R1	R2
	KRA101M	4.7K 4.7K
	KRA102M	10K 10K
	KRA109M	47K 28K

MARKS

VERSION	C1180	LF111	C1182
B/E/EN	220P	QGR0797-001	0-0033
J	NONE	SHORT	NONE

MARKS

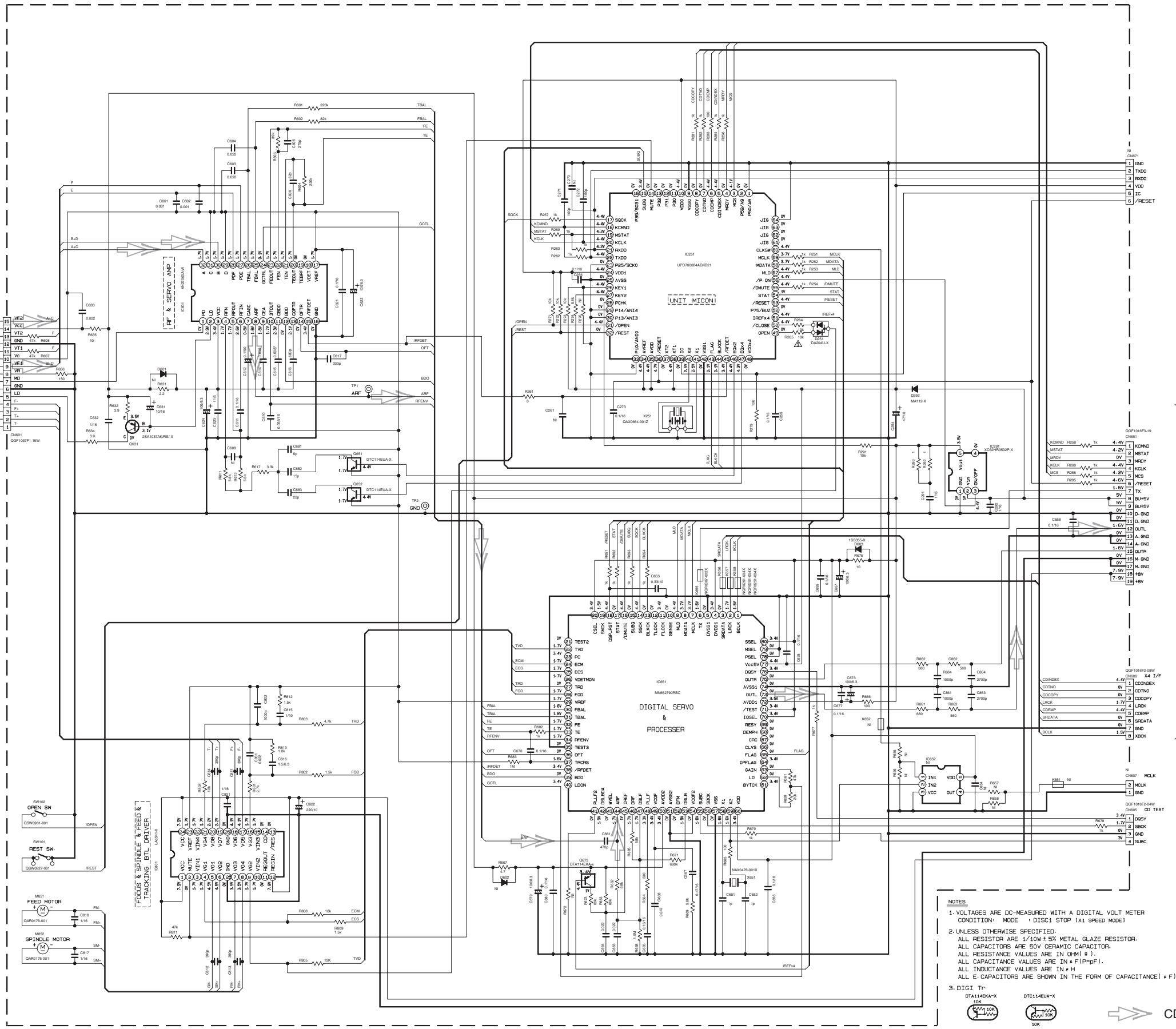
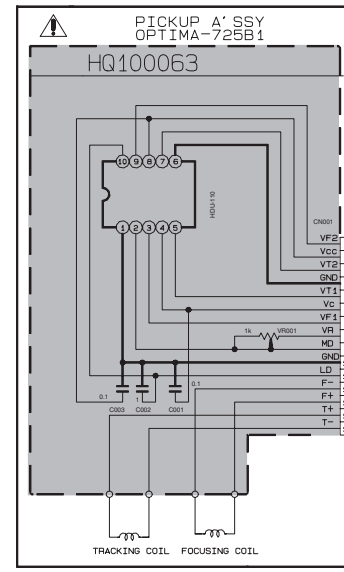
MAIN TRANS	STANDBY TRANS	
B/E/EN	GGT0332-002	GGT0203-002
J	GGT0332-004	GGT0203-012

NOTES
 1. VOLTAGES ARE DC-MEASURED WITH A DIGITAL VOLT METER OR OSCILLOSCOPE WITHOUT INPUT SIGNAL. CONDITION: CD STOP MODE.
 2. UNLESS OTHERWISE SPECIFIED, RESISTORS ARE 1/4W 5% CARBON RESISTOR. ALL RESISTANCE VALUES ARE IN OHMS (Ω). ALL CAPACITORS ARE CERAMIC CAPACITOR OR MYLAR CAPACITOR. ALL CAPACITANCE VALUES ARE IN PICO-FARAD (pF). ALL INDUCTANCE VALUES ARE IN MILLI-HENRY (mH). ALL E-CAPACITORS ARE SHOWN IN THE FORM OF CAPACITANCE (μF)/RATED VOLTAGE (V).

Parts are safety assurance parts. When replacing those parts make sure to use the specified one.

CD servo control section

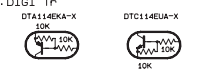
5
4
3
2
1



FOR FLASH MICON

TO AMP

- NOTES
1. VOLTAGES ARE DC-MEASURED WITH A DIGITAL VOLT METER
CONDITION: MODE + DISC STOP (x1 SPEED MODE)
 2. UNLESS OTHERWISE SPECIFIED.
ALL RESISTOR ARE 1/10W ± 5% METAL GLAZE RESISTOR.
ALL CAPACITORS ARE 50V CERAMIC CAPACITOR.
ALL RESISTANCE VALUES ARE IN OHM (Ω).
ALL CAPACITANCE VALUES ARE IN PICO-F (pF).
ALL INDUCTANCE VALUES ARE IN μH
ALL E-CAPACITORS ARE SHOWN IN THE FORM OF CAPACITANCE (μF)/RATED VOLTAGE (V).
 3. DIGI Tr

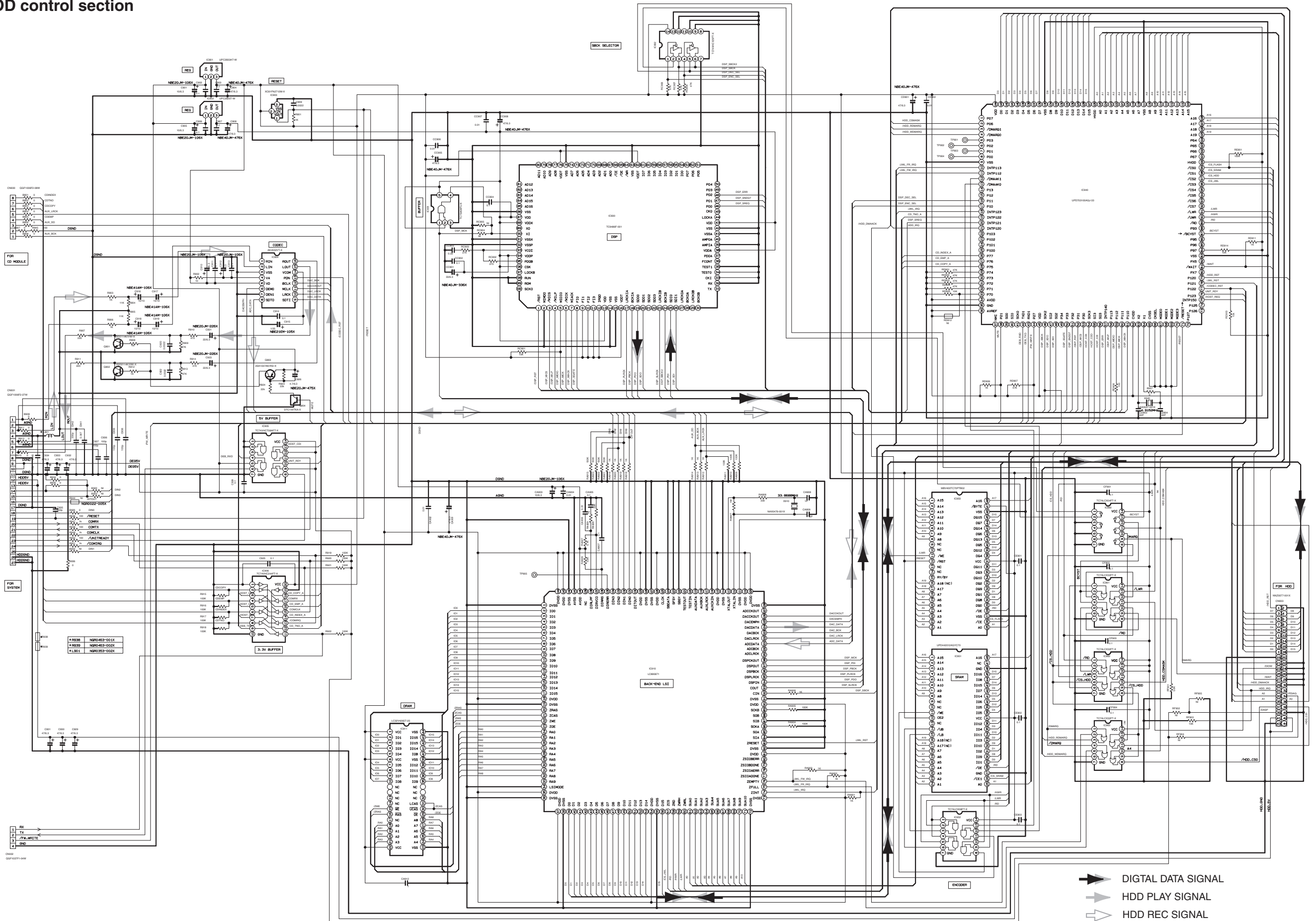


Parts are safety assurance parts.
When replacing those parts make sure to use the specified one.

A B C 2-4 D E F G

HDD control section

5
4
3
2
1



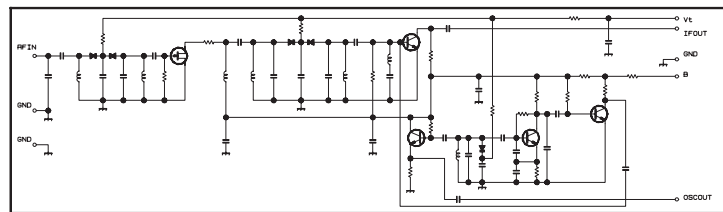
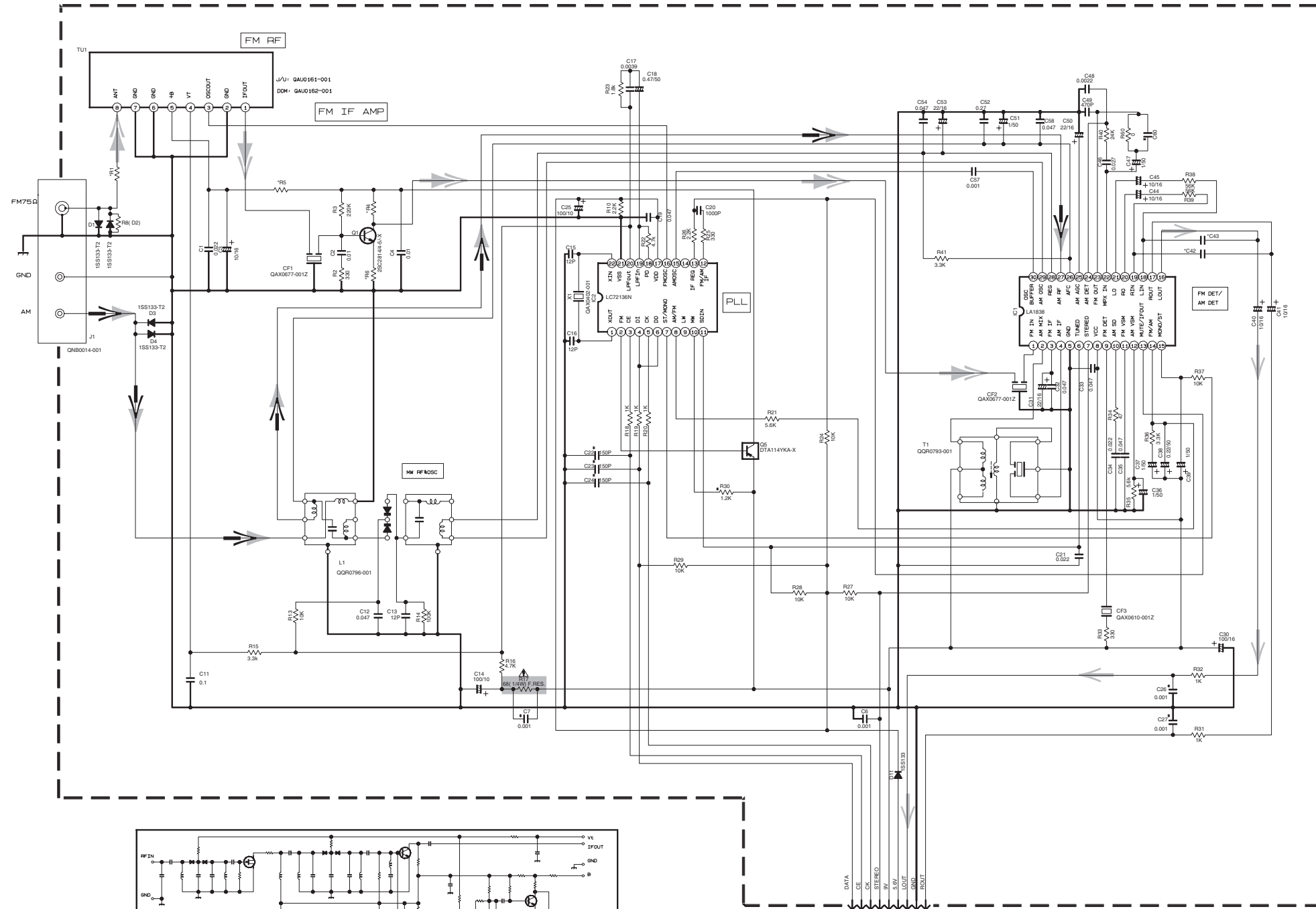
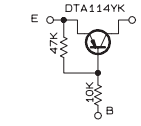
➡ DIGITAL DATA SIGNAL
 ➡ HDD PLAY SIGNAL
 ➡ HDD REC SIGNAL

■ Tuner section

NOTES

1. VOLTAGES ARE DC-MEASURED WITH A DIGITAL VOLT METER.
2. ALL RESISTORS ARE 1/8W ±5% METAL GLAZE RESISTOR.
3. ALL RESISTANCE VALUES ARE IN OHM(Ω).
4. ALL CAPACITANCE VALUES ARE IN *F(P=pF).
5. ALL E. CAPACITORS ARE SHOWN IN THE FORM OF CAPACITANCE (*F)/RATED VOLTAGE (V).
6. SI DIODES (▶) ARE ALL 1SS133-T THAT CAN BE CHANGED TO SIMILAR DIODE SUCH AS MA165 OR HSS104J.
7. PARTS NO. OF TRANSISTORS ARE AS FOLLOWS.
Q1 2SC2814/4-5/-X Q2-Q3 2SC2412K/R/-X
Q4-Q5 DTA114YKA-X

B. INSIDE OF DIGITAL TRANSISTORS ARE SHOWN AS FOLLOWS.



	VERSION		
	J/C	User's	SON UX MODEL
C48	0.0022	0.0015	0.0018
C43	0.0022	0.0015	0.0018
R1	560	560	270
R4	331	331	221
R5	560	560	270
R6	240	240	180
R8	D2	D2	101

- ▶ FM SIGNAL
- ▶ AM SIGNAL
- ▶ TUNER SIGNAL

▲ Parts are safety assurance parts. When replacing those parts make sure to use the specified one.

CONDITION	PIN NO.	1	2	3	4	5	6	7	8	9	10	11	12	13	14	15	16	17	18	19	20	21	22	23	24	25	26	27	28	29	30
IC1	FM NO SIGNAL	3.6	8.9	3.6	3.6	0	5.0	5.0	8.9	8.9	1.3	0.1	0	0.9	7.8	7.8	4.3	4.3	4.3	4.3	3.4	3.4	2.8	3.4	0	0	3.5	3.5	3.6	2.7	
	FM 60dB STEREO	3.6	8.9	3.6	3.6	0	5.0	5.0	8.9	8.9	1.3	4.3	0	0.9	7.8	7.8	4.3	4.3	4.3	4.3	3.4	3.4	2.8	3.4	0	0	3.6	3.6	3.6	2.7	
	AM NO SIGNAL	3.5	9.0	3.5	3.5	0	5.0	5.1	9.0	2.6	1.3	0	0	0.9	4.7	5.5	4.3	4.3	4.3	3.3	3.2	2.8	3.2	0.7	0.7	3.6	3.6	3.6	2.1		
IC2	FM NO SIGNAL	2.5	0	0	5.0	4.9	5.0	7.9	7.8	3.6	6.1	5.1	0	0	0	0	2.5	5.1	0.9	0.9	3.8	0	2.3								

T _r NO.	Q1	Q5	
PIN NO.	E C B E C B	E C B	
FM 87.5MHz NO SIGNAL	0 7.1 0.85 8.9 8.8 0		
AM 522kHz NO SIGNAL	0 0 0 9.0 0 8.9		
T _r NO.	Q2	Q3	Q4
PIN NO.	E C B E C B E C B		
AM 522kHz NO SIGNAL	0 0 0.7 0 0 0.7 0 3.6 0.7		
AM 144kHz NO SIGNAL	0 0 0.3 0 0.3 0.3 3.6 3.6 3.6		

5
4
3
2
1

A B C 2-6 D E F G