

JVC

SERVICE MANUAL

PORTABLE CD CHANGER SYSTEM

PC-XC50 C/J/U

Supplement

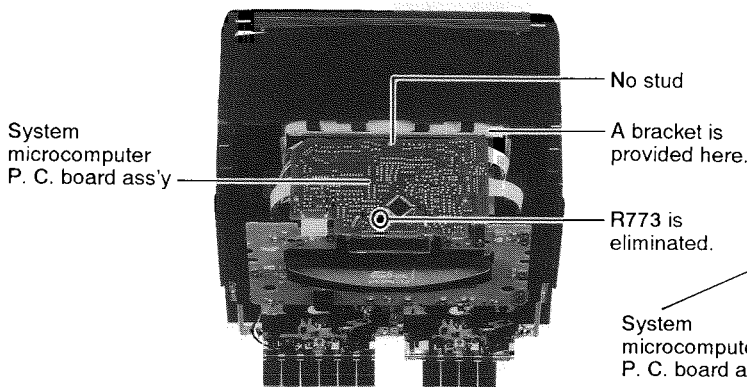
A part of the PC – XC50 body has been modified. Since only the modified points are described in this supplement, refer to the previously published manual at the same time.

Contents

Block Diagram	Page2	■ System Microprocessor/ Key Switch Board	14
Standard Schematicdiagram		■ Tuner Board (C/J Version)	17
■ Head Amplifier Circuit	4	■ CD Amplifier Boaed.....	18
■ Tuner Circuit	5	■ CD Changer Microprocessor Boaed	20
■ Amplifier Circuit	6	■ Tuner Board (U Version)	22
■ System Microprocessor Circuit	8	Exploded View of Enclosure Component	
■ CD Amplifier Circuit.....	9	Part and Parte List.....	24
Location of P. C. Board Parts and Parts List			
■ Main Amplifier Board	10		

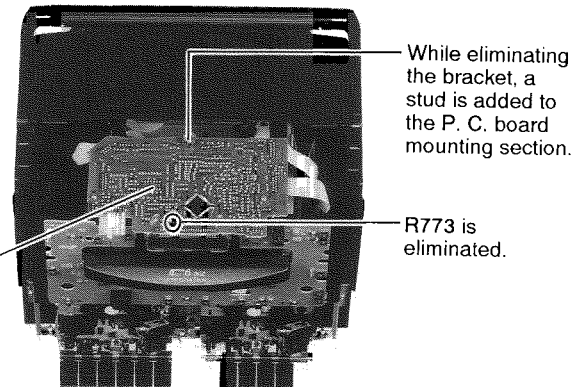
◆ OLD

Supplementary of Service Manual for PC – XC50



◆ NEW

Supplementary of Service Manual for PC – XC50



Confirm the new model according to the following points:

1. Elimination of bracket
2. Addition of stud
3. Elimination of R 773

Block Diagram (C/J Version)

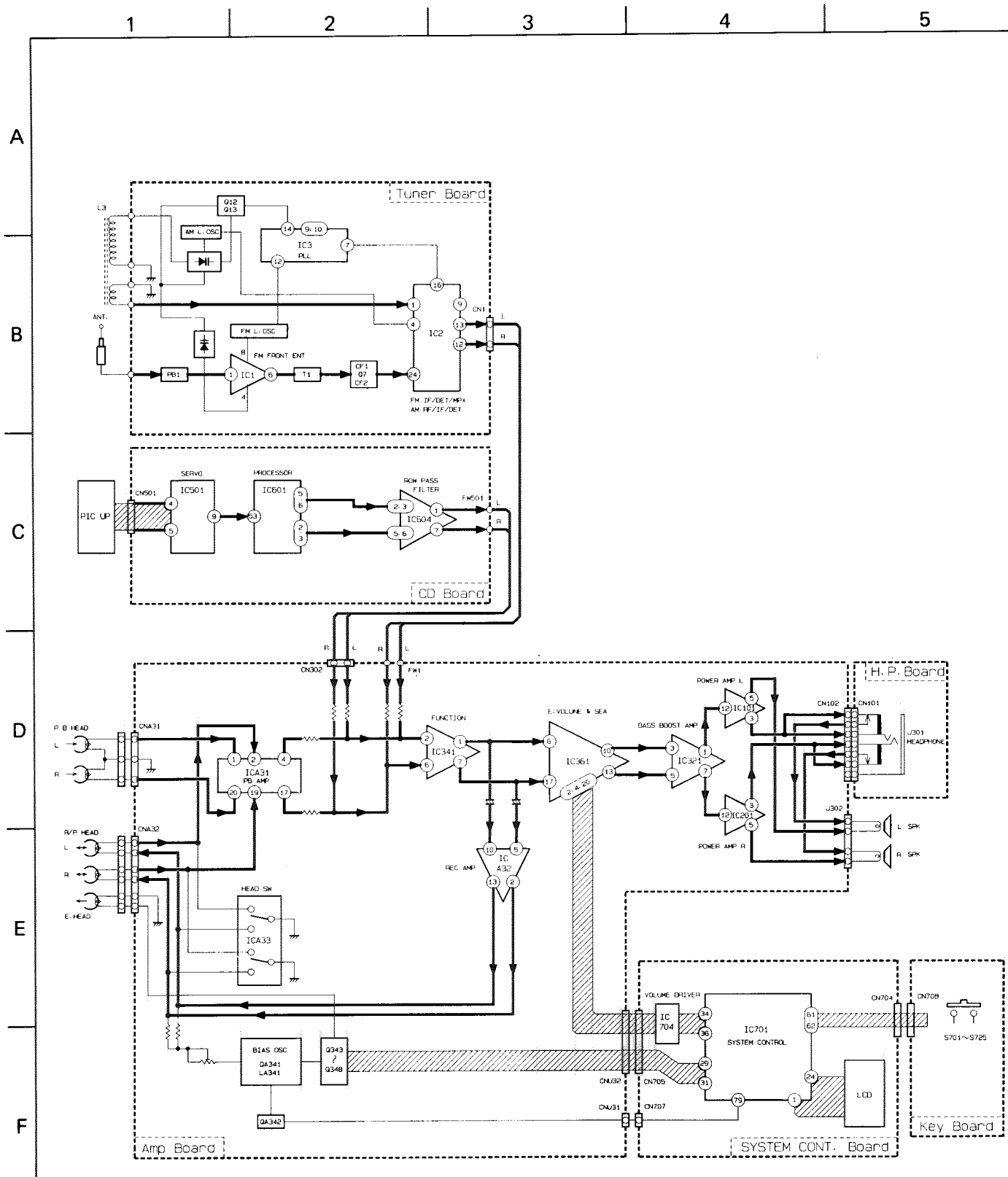


Fig. 1

(U Version)

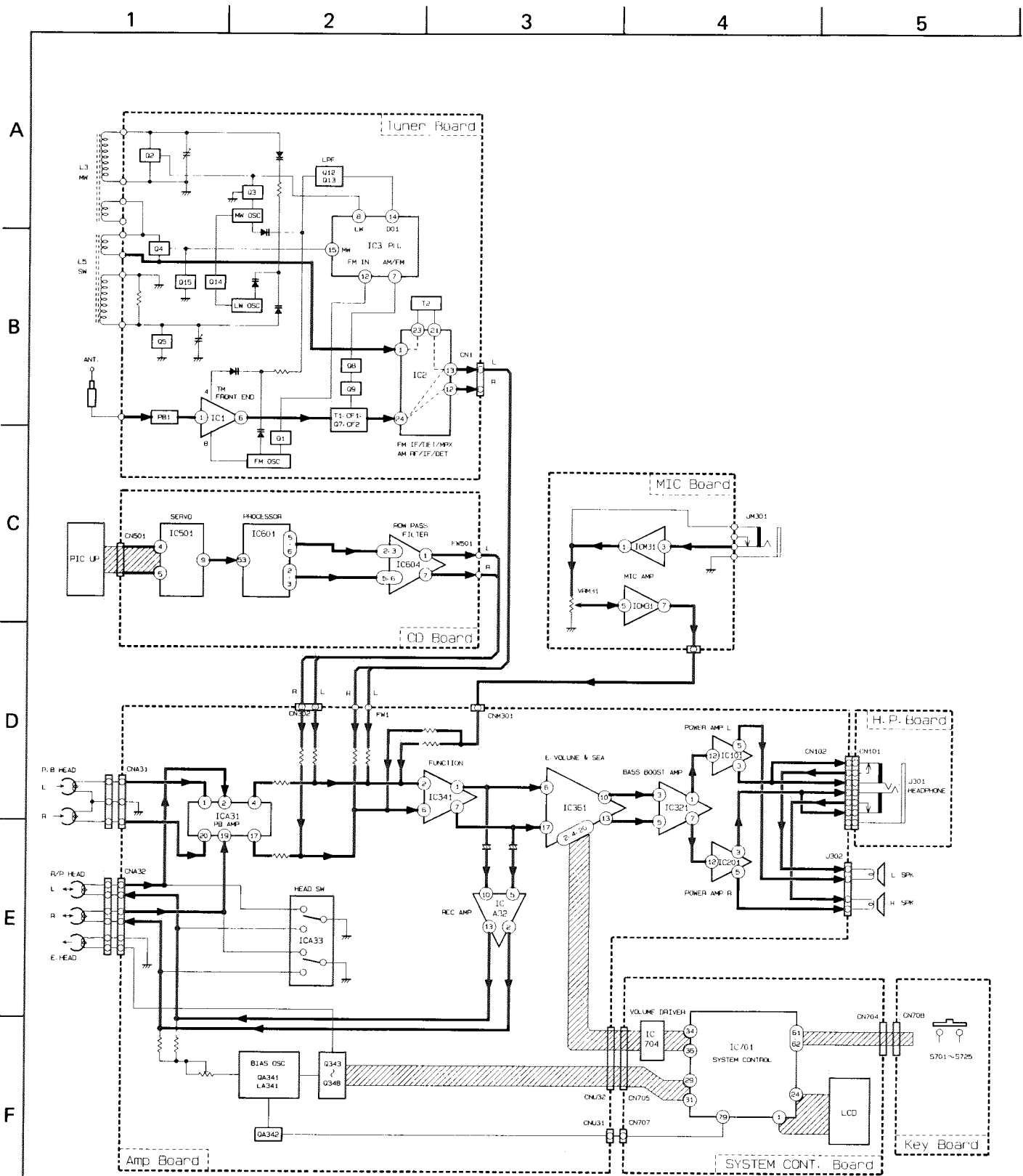
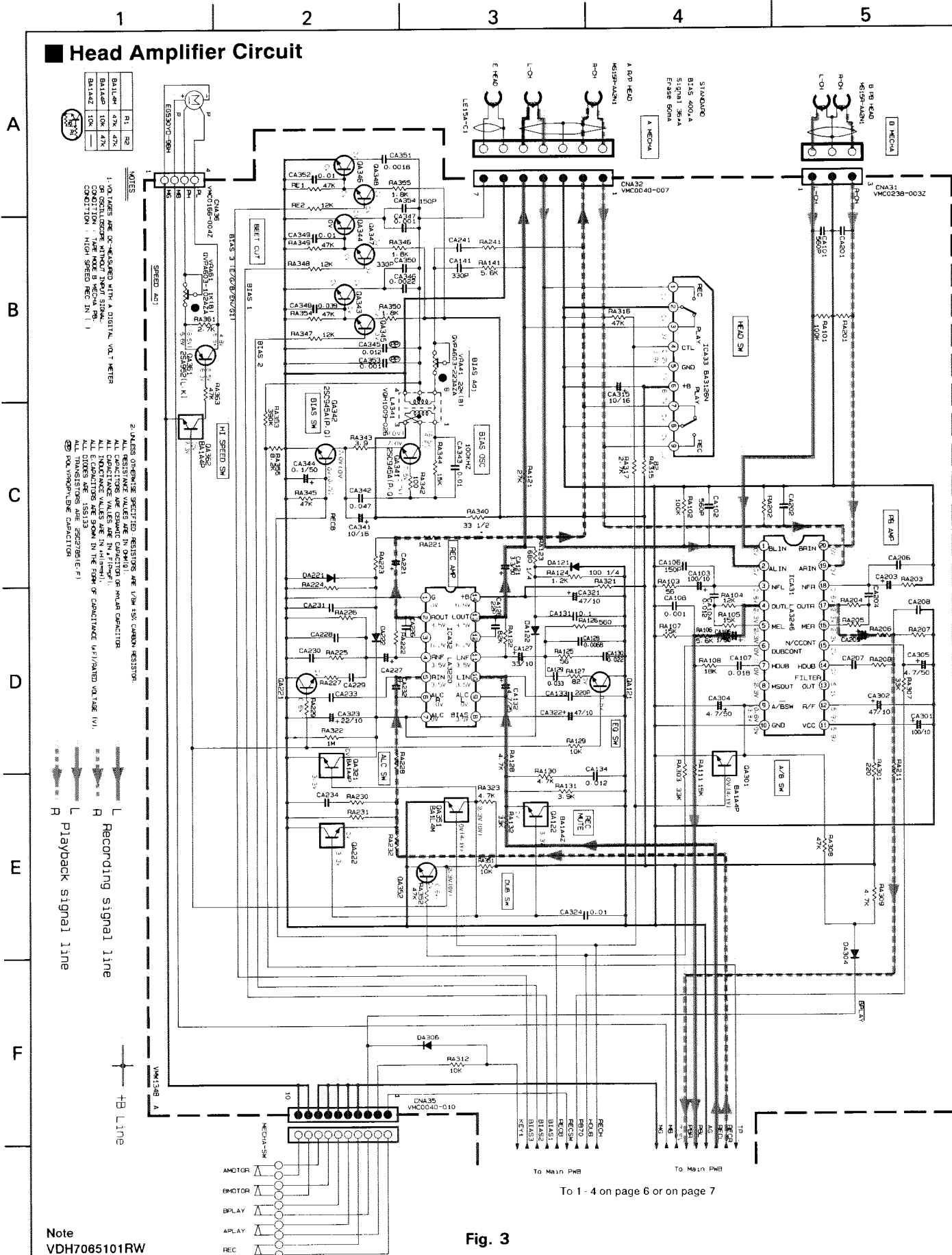


Fig. 2

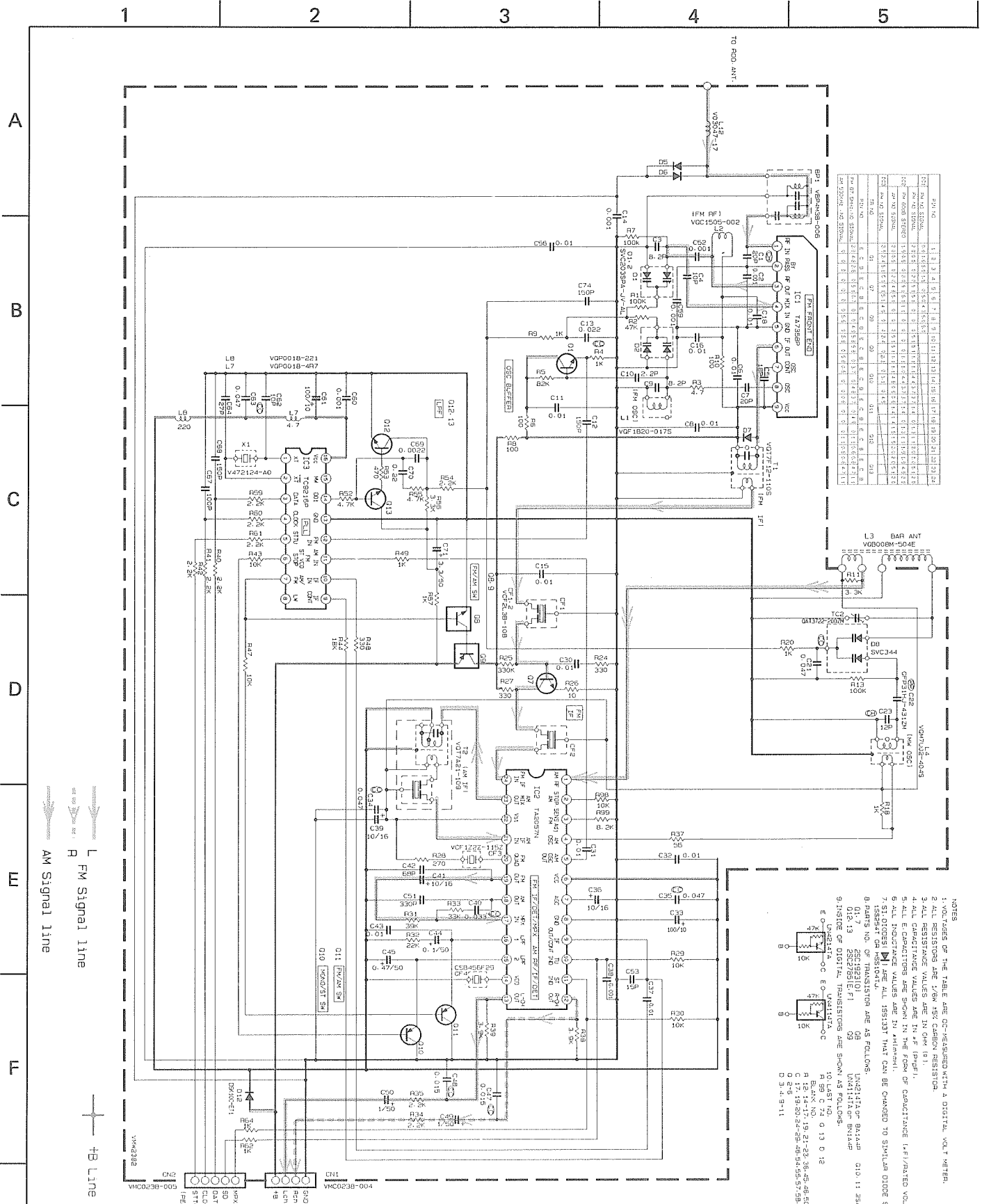
Standard Schematic Diagram



To 1 - 4 on page 6 or on page 7

Note
VDH7065101RW

Tuner Circuit (C/J Version)



Part No.	Quantity	Part No.	Quantity	Part No.	Quantity
IC1	1	IC11	1	IC21	1
IC2	1	IC12	1	IC22	1
IC3	1	IC13	1	IC23	1
IC4	1	IC14	1	IC24	1
IC5	1	IC15	1	IC25	1
IC6	1	IC16	1	IC26	1
IC7	1	IC17	1	IC27	1
IC8	1	IC18	1	IC28	1
IC9	1	IC19	1	IC29	1
IC10	1	IC20	1	IC30	1

- NOTES
1. VOLTAGE OF THE TABLE ARE DC-MEASURED WITH A DIGITAL VOLTMETER.
 2. ALL RESISTORS ARE 1/8W 5% CARBON RESISTOR.
 3. ALL CAPACITANCE VALUES ARE IN pF UNLESS OTHERWISE SPECIFIED.
 4. ALL CAPACITANCE VALUES ARE IN nF (pF) UNLESS OTHERWISE SPECIFIED.
 5. ALL ELECTROLYTIC CAPACITORS ARE IN THE FORM OF CAPACITANCE (VOLTAGE) UNLESS OTHERWISE SPECIFIED.
 6. ALL INDUCTANCE VALUES ARE IN mH UNLESS OTHERWISE SPECIFIED.
 7. SI UNITS ARE ALL IN SI UNITS THAT CAN BE CHANGED TO SIMILAR UNITS SUCH AS mm, cm, m, etc.
 8. PARTS NO. OF TRANSISTORS ARE AS FOLLOWS:
 - IC1-7: 2SC1823(O) F1
 - IC8-10: 2SC1823(O) F1
 - IC11-13: 2SC1823(O) F1
 - IC14-16: 2SC1823(O) F1
 - IC17-19: 2SC1823(O) F1
 - IC20-22: 2SC1823(O) F1
 - IC23-25: 2SC1823(O) F1
 - IC26-28: 2SC1823(O) F1
 - IC29-31: 2SC1823(O) F1
 - IC32-34: 2SC1823(O) F1
 - IC35-37: 2SC1823(O) F1
 - IC38-40: 2SC1823(O) F1
 - IC41-43: 2SC1823(O) F1
 - IC44-46: 2SC1823(O) F1
 - IC47-49: 2SC1823(O) F1
 - IC50-52: 2SC1823(O) F1
 - IC53-55: 2SC1823(O) F1
 - IC56-58: 2SC1823(O) F1
 - IC59-61: 2SC1823(O) F1
 - IC62-64: 2SC1823(O) F1
 - IC65-67: 2SC1823(O) F1
 - IC68-70: 2SC1823(O) F1
 - IC71-73: 2SC1823(O) F1
 - IC74-76: 2SC1823(O) F1
 - IC77-79: 2SC1823(O) F1
 - IC80-82: 2SC1823(O) F1
 - IC83-85: 2SC1823(O) F1
 - IC86-88: 2SC1823(O) F1
 - IC89-91: 2SC1823(O) F1
 - IC92-94: 2SC1823(O) F1
 - IC95-97: 2SC1823(O) F1
 - IC98-100: 2SC1823(O) F1
 9. INSIDE OF DIGITAL TRANSISTORS ARE SHOWN AS FOLLOWS:
 - IC1-7: 2SC1823(O) F1
 - IC8-10: 2SC1823(O) F1
 - IC11-13: 2SC1823(O) F1
 - IC14-16: 2SC1823(O) F1
 - IC17-19: 2SC1823(O) F1
 - IC20-22: 2SC1823(O) F1
 - IC23-25: 2SC1823(O) F1
 - IC26-28: 2SC1823(O) F1
 - IC29-31: 2SC1823(O) F1
 - IC32-34: 2SC1823(O) F1
 - IC35-37: 2SC1823(O) F1
 - IC38-40: 2SC1823(O) F1
 - IC41-43: 2SC1823(O) F1
 - IC44-46: 2SC1823(O) F1
 - IC47-49: 2SC1823(O) F1
 - IC50-52: 2SC1823(O) F1
 - IC53-55: 2SC1823(O) F1
 - IC56-58: 2SC1823(O) F1
 - IC59-61: 2SC1823(O) F1
 - IC62-64: 2SC1823(O) F1
 - IC65-67: 2SC1823(O) F1
 - IC68-70: 2SC1823(O) F1
 - IC71-73: 2SC1823(O) F1
 - IC74-76: 2SC1823(O) F1
 - IC77-79: 2SC1823(O) F1
 - IC80-82: 2SC1823(O) F1
 - IC83-85: 2SC1823(O) F1
 - IC86-88: 2SC1823(O) F1
 - IC89-91: 2SC1823(O) F1
 - IC92-94: 2SC1823(O) F1
 - IC95-97: 2SC1823(O) F1
 - IC98-100: 2SC1823(O) F1

Fig. 4

Note
VDH7065106TW

To 10-F on page 8

To 1-D on page 6

PC - XC50 C/J/U

Tuner Circuit (U Version)

1 2 3 4 5

A B C D E F

FM Signal line

AM Signal line

+B Line

IC1 TA7388P

IC2 TA7388P

IC3 TA7388P

IC4 TA7388P

IC5 TA7388P

IC6 TA7388P

IC7 TA7388P

IC8 TA7388P

IC9 TA7388P

R1 10K

R2 10K

R3 10K

R4 10K

R5 10K

R6 10K

R7 10K

R8 10K

R9 10K

R10 10K

R11 10K

R12 10K

R13 10K

R14 10K

R15 10K

R16 10K

R17 10K

R18 10K

R19 10K

R20 10K

R21 10K

R22 10K

R23 10K

R24 10K

R25 10K

R26 10K

R27 10K

R28 10K

R29 10K

R30 10K

R31 10K

R32 10K

R33 10K

R34 10K

R35 10K

R36 10K

R37 10K

R38 10K

R39 10K

R40 10K

C1 100/10

C2 100/10

C3 100/10

C4 100/10

C5 100/10

C6 100/10

C7 100/10

C8 100/10

C9 100/10

C10 100/10

C11 100/10

C12 100/10

C13 100/10

C14 100/10

C15 100/10

C16 100/10

C17 100/10

C18 100/10

C19 100/10

C20 100/10

C21 100/10

C22 100/10

C23 100/10

C24 100/10

C25 100/10

C26 100/10

C27 100/10

C28 100/10

C29 100/10

C30 100/10

C31 100/10

C32 100/10

C33 100/10

C34 100/10

C35 100/10

C36 100/10

C37 100/10

C38 100/10

C39 100/10

C40 100/10

C41 100/10

C42 100/10

C43 100/10

C44 100/10

C45 100/10

C46 100/10

C47 100/10

C48 100/10

C49 100/10

C50 100/10

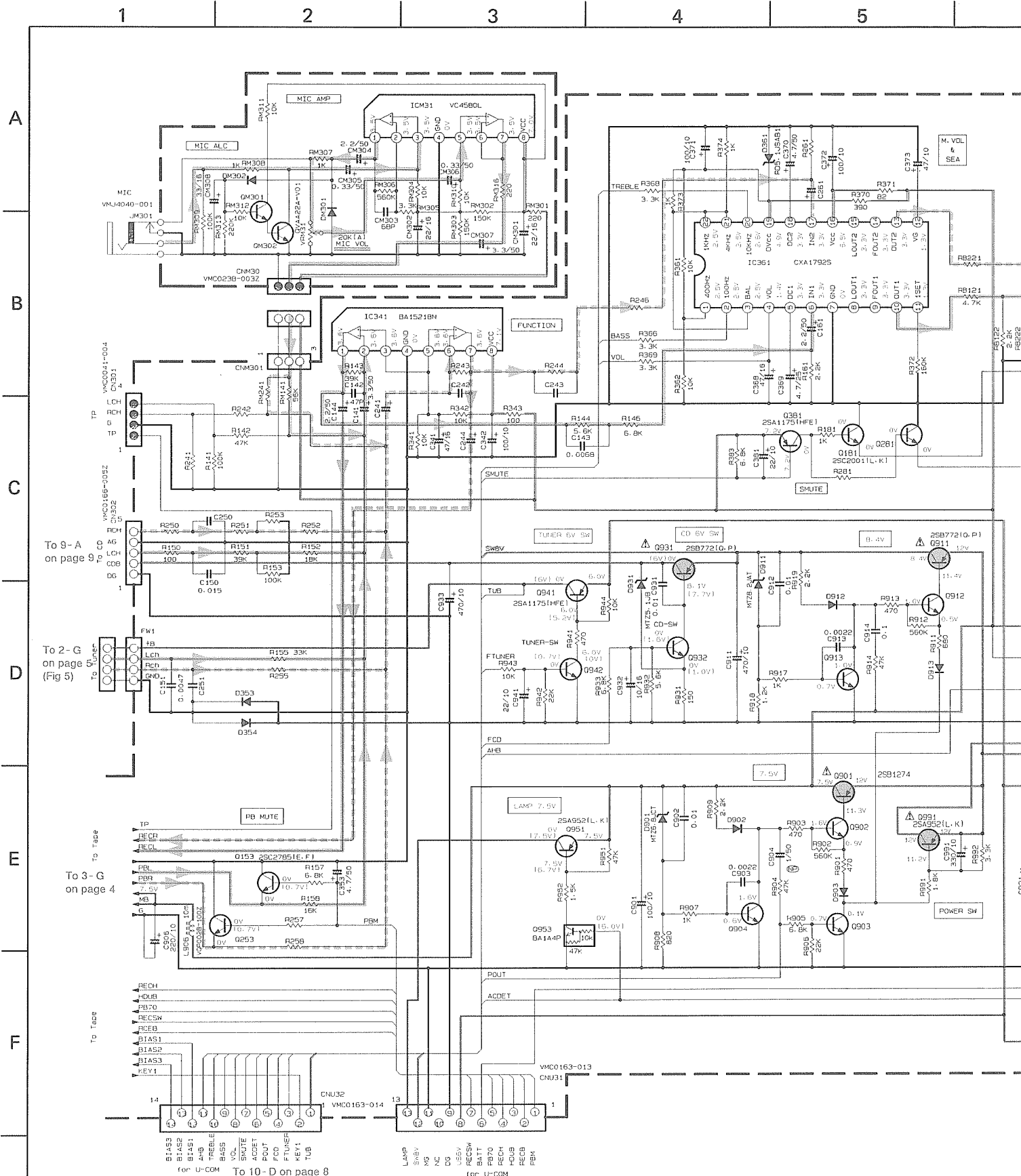
C51 100/10

TO 10 - F on page 8

TO 1 - D on page 7

Note VDH7065107TW (No. 1901C) 5

Amplifier Circuit (U Version)

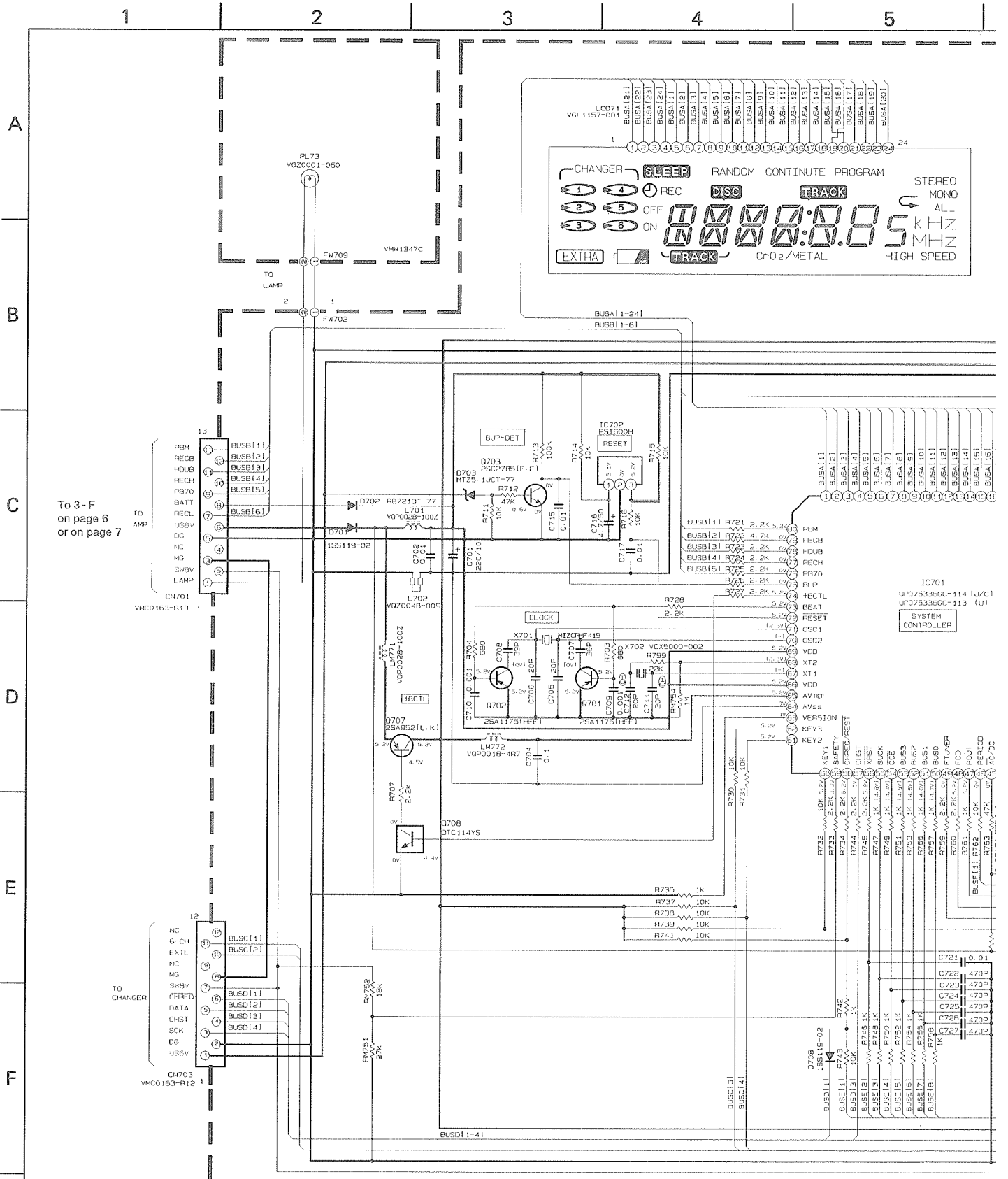


- NOTES**
1. VOLTAGES ARE DC-MEASURED WITH A DIGITAL VOLT METER OR OSCILLOSCOPE WITHOUT INPUT SIGNAL.
CONDITION --- D MECHA PLAY MODE DC 12V
CONDITION ON ()
 2. UNLESS OTHERWISE SPECIFIED, RESISTORS ARE 1/6W ±5% CARBON RESISTOR.
ALL RESISTANCE VALUES ARE IN OHMS (Ω).
ALL CAPACITORS ARE CERAMIC CAPACITOR OR MLK/MR CAPACITOR.
ALL CAPACITANCE VALUES ARE IN nF (n=10⁻⁹ F).
ALL INDUCTANCE VALUES ARE IN mH (m=10⁻³ H).
ALL E-CAPACITORS ARE SHOWN IN THE FORM OF CAPACITANCE (PF)/RATED VOLTAGE (V).
ALL DIODES ARE 1SS133.
ALL TRANSISTORS ARE 2SC2765(F-E).

Note
VDH7065107AV

Fig. 7

System Microprocessor Circuit

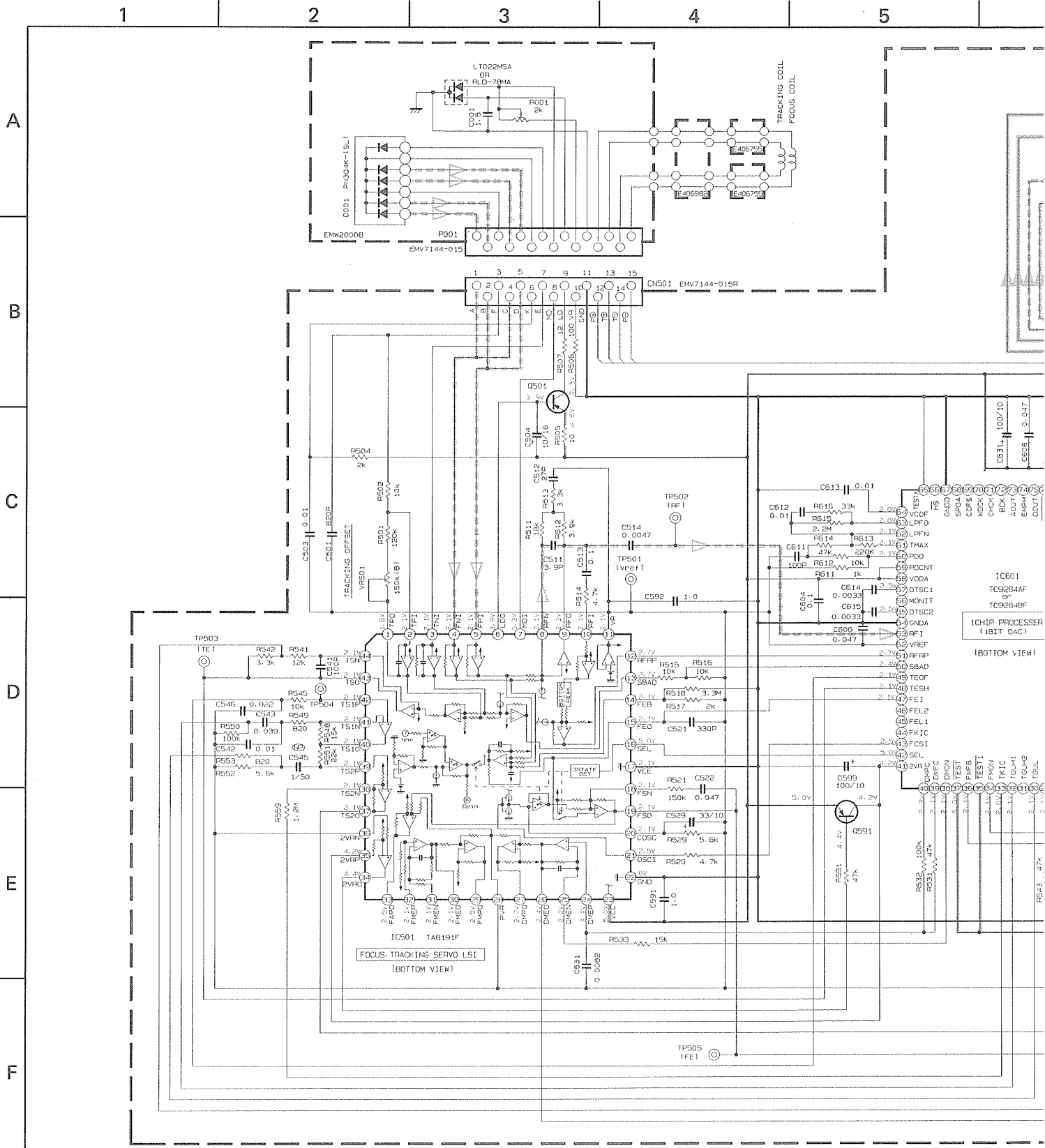


To 3-F on page 6 or on page 7

- NOTES**
- VOLTAGES ARE DC-MEASURED WITH A DIGITAL VOLT METER OR OSCILLOSCOPE WITHOUT INPUT SIGNAL.
 - UNLESS OTHERWISE SPECIFIED, RESISTORS ARE 1/8W ±5% CARBON RESISTOR. ALL RESISTANCE VALUES ARE IN ΩMΩ. ALL CAPACITORS ARE CERAMIC CAPACITOR OR MLAR CAPACITOR. ALL CAPACITANCE VALUES ARE IN pF (pF). ALL INDUCTANCE VALUES ARE IN μH (μH). ALL ELECTROLYTICS ARE SHOWN IN THE FORM OF CAPACITANCE, μF (μF) / RATED VOLTAGE (V).
 - BRACKETS INSIDE VOLTS REFERENCE DATA.
 - UNFLAMMABLE CARBON RESISTOR
 - METAL FILM RESISTOR
 - OXIDE METAL FILM RESISTOR
 - ±20% LOW LEAK CURRENT ELECTROLYTIC CAPACITOR
 - NON-POLARISED ELECTROLYTIC CAPACITOR
 - POLYPROPYLENE CAPACITOR
 - POLYSTYROL CAPACITOR

Note
VDH7065106SV

CD Amplifier Circuit



NOTES

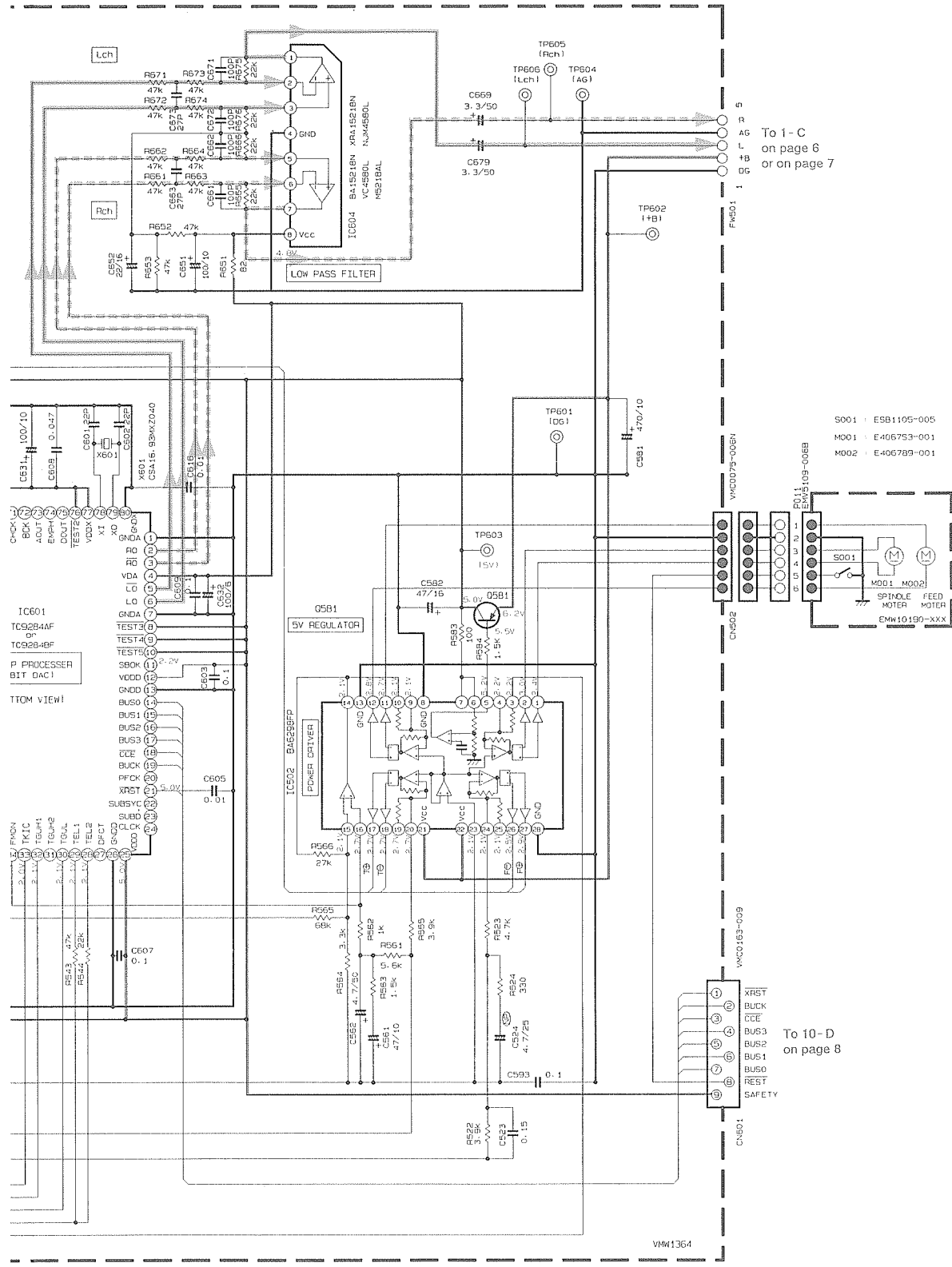
1. VOLTAGES ARE DC-MEASURED WITH A DIGITAL VOLT METER IN PLAYBACK
2. UNLESS OTHERWISE SPECIFIED, RESISTORS ARE 1/8W 1%K CARBON RESISTOR.
3. ALL RESISTANCE VALUES ARE IN OHMS.
4. ALL CAPACITORS ARE CERAMIC CAPACITOR OR MYLAR CAPACITOR.
5. ALL CAPACITANCE VALUES ARE IN μF/P/P/F.
6. ALL INDUCTANCE VALUES ARE IN mH/mr/mr/mr.
7. ALL E-CAPACITORS ARE SHOWN IN THE FORM OF CAPACITANCE 1/μF/RATED VOLTAGE (V).

0501	25A952(L, K1)
0591	25A13091R(S1) OR 25A1175(HFE1) OR 25A93351RS1

- (C) UNFLAMMABLE CARBON RESISTOR
- (R) METAL FILM RESISTOR
- (O) OXIDE METAL FILM RESISTOR
- (E) 120% LOW LEAK CURRENT ELECTROLYTIC CAPACITOR
- (N) NON-POLARISED ELECTROLYTIC CAPACITOR
- (P) POLYPROPYLENE CAPACITOR
- (S) POLYSTYRENE CAPACITOR

Note
VDH7065106CV

6 | 7 | 8 | 9 | 10



To 1 - C
on page 6
or on page 7

S001 : ESB1105-005
M001 : E406753-001
M002 : E406789-001

To 10 - D
on page 8

Fig. 9

L Analogue signal line
 R Digital signal line
 +B Line

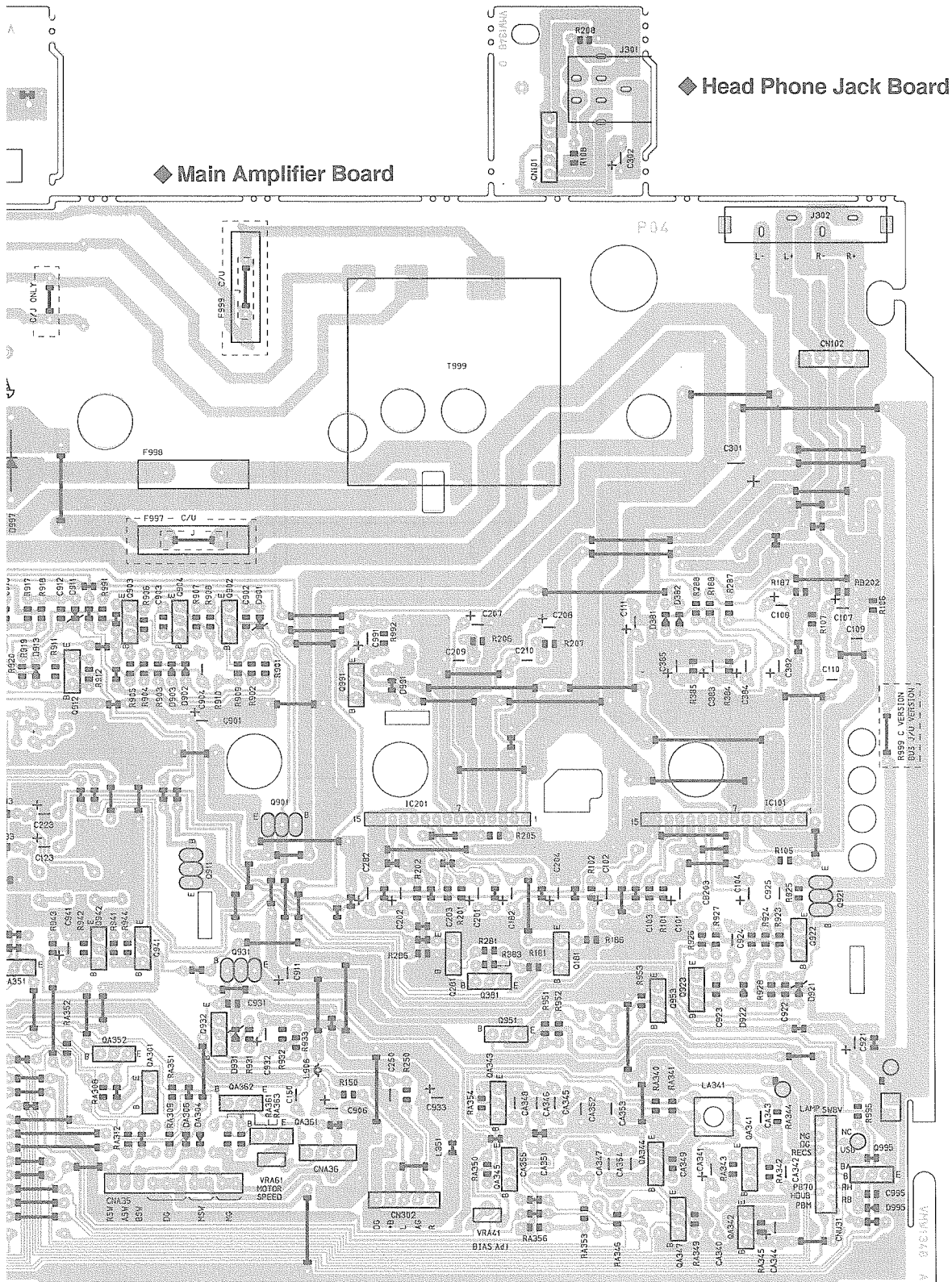


Fig. 10

● Main Board Parts List

BLOCK NO. 0111111		BLOCK NO. 0111111		
REF.	PARTS NO.	PARTS NAME	REMARKS	SUFFIX
C 101	QET41AM-476	E-CAPACITOR	47MF 20% 10V	
C 102	QET41AM-476	E-CAPACITOR	47MF 20% 10V	
C 103	QCBBIHK-101Y	E-CAPACITOR	100PF 10% 50V	
C 104	QET41AM-227	E-CAPACITOR	220MF 20% 10V	
C 107	QET41AM-227	E-CAPACITOR	220MF 20% 10V	
C 108	QET41AM-227	E-CAPACITOR	220MF 20% 10V	
C 109	QCC11EM-104V	E-CAPACITOR	-10MF 20% 25V	
C 110	QCC11EM-104V	E-CAPACITOR	-10MF 20% 25V	
C 111	QET41EM-227	E-CAPACITOR	220MF 20% 25V	
C 113	VCE081C-106Z	E-CAPACITOR	220MF 20% 25V	
C 123	QET41HM-475	E-CAPACITOR	4.7MF 20% 50V	
C 141	QEK61HM-335ZN	E-CAPACITOR	3.3MF 20% 50V	
C 142	QCS11HJ-470	E-CAPACITOR	47PF 5% 50V	
C 143	QFN41HJ-682	M CAPACITOR	6800PF 5% 50V	
C 144	QET41HM-225ZN	E-CAPACITOR	2.2MF 20% 50V	
C 150	QCC31EM-1532V	E-CAPACITOR	-015MF 20% 25V	
C 151	QCB1CM-472Y	E-CAPACITOR	4700PF 20% 16V	
C 161	QET41HM-225ZN	E-CAPACITOR	2.2MF 20% 50V	
C 182	VCE081C-106Z	E-CAPACITOR	2.2MF 20% 50V	
C 201	QET41AM-476	E-CAPACITOR	47MF 20% 10V	
C 202	QET41AM-476	E-CAPACITOR	47MF 20% 10V	
C 203	QCBBIHK-101Y	E-CAPACITOR	100PF 10% 50V	
C 204	QET41AM-227	E-CAPACITOR	220MF 20% 10V	
C 207	QET41AM-227	E-CAPACITOR	220MF 20% 10V	
C 208	QET41AM-227	E-CAPACITOR	220MF 20% 10V	
C 209	QCC11EM-104V	E-CAPACITOR	-10MF 20% 25V	
C 210	QCC11EM-104V	E-CAPACITOR	-10MF 20% 25V	
C 223	VCE081C-106Z	E-CAPACITOR	2.2MF 20% 50V	
C 225	QET41HM-475	E-CAPACITOR	4.7MF 20% 50V	
C 241	QEK61HM-335ZN	E-CAPACITOR	3.3MF 20% 50V	
C 242	QCS11HJ-470	E-CAPACITOR	47PF 5% 50V	
C 243	QFN41HJ-682	M CAPACITOR	6800PF 5% 50V	
C 244	QET41HM-225ZN	E-CAPACITOR	2.2MF 20% 50V	
C 250	QCC31EM-1532V	E-CAPACITOR	-015MF 20% 25V	
C 251	QCB1CM-472Y	E-CAPACITOR	4700PF 20% 16V	
C 261	QET41HM-225ZN	E-CAPACITOR	2.2MF 20% 50V	
C 282	VCE081C-106Z	E-CAPACITOR	2.2MF 20% 50V	
C 301	QETBIEM-478E	E-CAPACITOR	4700MF 20% 25V	
C 302	QET41AM-227	E-CAPACITOR	220MF 20% 10V	
C 321	QET41CM-106	E-CAPACITOR	10MF 20% 16V	
C 322	QET41AM-227	E-CAPACITOR	220MF 20% 10V	
C 324	QET41CM-334ZN	E-CAPACITOR	-33MF 20% 50V	
C 341	QEK41CM-476	E-CAPACITOR	47MF 20% 16V	
C 342	QET41AM-107	E-CAPACITOR	100MF 20% 10V	
C 353	QET41HM-475	E-CAPACITOR	4.7MF 20% 50V	
C 368	QEK41CM-476	E-CAPACITOR	47MF 20% 16V	
C 369	QEK41EM-475	E-CAPACITOR	4.7MF 20% 25V	
C 370	QET41HM-475	E-CAPACITOR	4.7MF 20% 50V	
C 371	QET41AM-107	E-CAPACITOR	100MF 20% 10V	
C 372	QET41AM-107	E-CAPACITOR	100MF 20% 10V	
C 373	QET41AM-476	E-CAPACITOR	47MF 20% 10V	
C 381	QET41AM-226	E-CAPACITOR	22MF 20% 10V	
C 382	QET41AM-476	E-CAPACITOR	47MF 20% 10V	
C 383	QET41HM-335ZN	E-CAPACITOR	3.3MF 20% 50V	
C 384	QET41AM-476	E-CAPACITOR	47MF 20% 10V	
C 385	QET41HM-335ZN	E-CAPACITOR	3.3MF 20% 50V	
C 901	QET41AM-107	E-CAPACITOR	100MF 20% 10V	
C 902	QCVB1CM-103Y	E-CAPACITOR	.010MF 30% 16V	
C 903	QCB1CM-222Y	E-CAPACITOR	2200PF 20% 16V	
C 904	QEN61HM-105Z	M.E-CAPACITOR	1.0MF 20% 50V	
C 906	QET41AM-227	E-CAPACITOR	220MF 20% 10V	
C 911	QET41AM-477ZN	E-CAPACITOR	470MF 20% 10V	U
C 911	QET41AM-107	E-CAPACITOR	100MF 20% 10V	C,J
C 912	QCVB1CM-103Y	E-CAPACITOR	.010MF 30% 16V	
C 913	QCB1CM-222Y	E-CAPACITOR	2200PF 20% 16V	
C 914	QCC11EM-104V	E-CAPACITOR	-10MF 20% 25V	
C 921	QET41AM-226	E-CAPACITOR	22MF 20% 10V	
C 922	QCVB1CM-103Y	E-CAPACITOR	.010MF 30% 16V	
C 923	QCBBIHK-331Y	E-CAPACITOR	330PF 10% 50V	
C 924	QCC11EM-683V	E-CAPACITOR	.068MF 20% 25V	
C 925	QFV41HJ-224	FILM CAPACITOR	-22MF 5% 50V	
C 931	QCVB1CM-103Y	E-CAPACITOR	.010MF 30% 16V	
C 932	QET41CM-106	E-CAPACITOR	10MF 20% 16V	
C 933	QET41AM-477	E-CAPACITOR	470MF 20% 10V	
C 941	QET41AM-226	E-CAPACITOR	22MF 20% 10V	
C 991	QETBIAM-337	E-CAPACITOR	330MF 20% 10V	
C 995	QCVB1CM-103Y	E-CAPACITOR	.010MF 30% 16V	
A C 996	QFV71HJ-683ZM	FILM CAPACITOR	.068MF 5% 50V	
A C 997	QFV71HJ-683ZM	FILM CAPACITOR	.068MF 5% 50V	
A C 998	QFV71HJ-683ZM	FILM CAPACITOR	.068MF 5% 50V	
A C 999	QFV71HJ-683ZM	FILM CAPACITOR	.068MF 5% 50V	
CA101	QCBBIHK-561Y	E-CAPACITOR	560PF 10% 50V	
CA102	QCBBIHK-561Y	E-CAPACITOR	560PF 10% 50V	
CA103	QET41AM-107	E-CAPACITOR	100MF 20% 10V	
CA104	QFN41HJ-123	M-CAPACITOR	.012MF 5% 50V	
CA105	QET41HM-105	E-CAPACITOR	1.0MF 20% 50V	
CA106	QCBBIHK-151Y	E-CAPACITOR	150PF 10% 50V	
CA107	QFLC1HJ-183ZM	M-CAPACITOR	.018MF 5% 50V	
CA108	QCY41HK-102	E-CAPACITOR	1000PF 10% 50V	
CA121	QEK61HM-335ZN	E-CAPACITOR	3.3MF 20% 50V	
CA126	QCS11HJ-220	E-CAPACITOR	22PF 5% 50V	
CA127	QEK60JM-476ZM	E-CAPACITOR	47MF 20% 6.3V	
CA128	QCB1CM-682Y	E-CAPACITOR	6800PF 20% 16V	
CA129	QFLC1HJ-333ZM	M-CAPACITOR	.033MF 5% 50V	
CA130	QFLC1HJ-223ZM	M-CAPACITOR	.022MF 5% 50V	
CA131	QCC11EM-104V	E-CAPACITOR	-10MF 20% 25V	
CA132	QEK41EM-475	E-CAPACITOR	4.7MF 20% 25V	
CA133	QCBBIHK-221Y	E-CAPACITOR	220PF 10% 50V	
CA134	QFN41HJ-123	M-CAPACITOR	.012MF 5% 50V	
CA141	QCBBIHK-331Y	E-CAPACITOR	330PF 10% 50V	
CA201	QCBBIHK-561Y	E-CAPACITOR	560PF 10% 50V	
CA202	QCBBIHK-561Y	E-CAPACITOR	560PF 10% 50V	
CA203	QET41AM-107	E-CAPACITOR	100MF 20% 10V	
CA204	QFN41HJ-123	M-CAPACITOR	.012MF 5% 50V	
CA205	QET41HM-105	E-CAPACITOR	1.0MF 20% 50V	
CA206	QCBBIHK-151Y	E-CAPACITOR	150PF 10% 50V	
CA207	QFLC1HJ-183ZM	M-CAPACITOR	.018MF 5% 50V	
CA208	QCY41HK-102	E-CAPACITOR	1000PF 10% 50V	
CA221	QEK61HM-335ZN	E-CAPACITOR	3.3MF 20% 50V	
CA226	QCS11HJ-220	E-CAPACITOR	22PF 5% 50V	

BLOCK NO. 01111111

A REF.	PARTS NO.	PARTS NAME	REMARKS	SUFFIX
D 911	MTZ8-2JAT-77	ZENER DIODE		
D 912	1SS133	SI DIODE		
D 913	1SS133	SI DIODE		
D 921	RD5-6JSAB1	ZENER DIODE		
D 922	1SS133	SI DIODE		
D 931	MTZ5-11JB	ZENER DIODE		
D 995	1SS133	SI DIODE		
D 996	1N5401TM	SI DIODE		
D 997	1N5401TM	SI DIODE		
D 998	1N5401TM	SI DIODE		
D 999	1N5401TM	SI DIODE		
DA121	1SS133	SI DIODE		
DA122	1SS133	SI DIODE		
DA221	1SS133	SI DIODE		
DA222	1SS133	SI DIODE		
DA304	1SS133	SI DIODE		
DA306	1SS133	SI DIODE		
FC998	VMZ0125-001Z	FUSE CLIP	F998 F997	
ICA31	LA3246	IC		
ICA32	LA3220	IC		
ICA33	BA3126N	IC		
IC101	TA8229K	IC		
IC201	TA8229K	IC		
IC321	VC4580L	IC		
IC341	BA15218N	IC		
IC361	CXA1792S	IC		
J 301	VMJ4024-001	JACK	SEA & E VOL AMP	J
J 302	VMJ4044-001	SPK TERMINAL		C,U
J 999	QNCB251-V01	AC SOCKET		
J 999	QMC0263-004BS	INDUCTOR		
L 906	VGF0028-100Z	OSC COIL		
LA341	VGH1009-026	TRANSISTOR		
Q 121	2SC2785	TRANSISTOR		
Q 153	2SC2785	TRANSISTOR		
Q 181	2SC2001(L,K)	TRANSISTOR		
Q 221	2SC2785	TRANSISTOR		
Q 253	2SC2785	TRANSISTOR		
Q 281	2SC2001(L,K)	TRANSISTOR		
Q 325	2SC2785	TRANSISTOR		
Q 381	2SA1175	TRANSISTOR		
Q 901	28B1274(R,S)	TRANSISTOR		
Q 902	2SC2785	TRANSISTOR		
Q 903	2SC2785	TRANSISTOR		
Q 904	2SC2785	TRANSISTOR		
Q 911	28B772(Q,P)	TRANSISTOR		
Q 912	2SC2785	TRANSISTOR		
Q 913	2SC2785	TRANSISTOR		
Q 921	28B1274(R,S)	TRANSISTOR		
Q 922	2SC2785	TRANSISTOR		
Q 923	2SC2785	TRANSISTOR		
Q 931	28B772(Q,P)	TRANSISTOR		
Q 932	2SC2785	TRANSISTOR		
Q 941	2SA1175	TRANSISTOR		
Q 942	2SC2785	TRANSISTOR		
Q 951	2SA952(L,K)	TRANSISTOR		

BLOCK NO. 01111111

A REF.	PARTS NO.	PARTS NAME	REMARKS	SUFFIX
CA227	QK60JM-476ZM	E-CAPACITOR	47MF 20% 6.3V	
CA228	QCXB1CM-682Y	C-CAPACITOR	6800PF 20% 16V	
CA229	QFLC1HJ-333ZM	M-CAPACITOR	.033MF 5% 50V	
CA230	QFLC1HJ-223ZM	M-CAPACITOR	.022MF 5% 50V	
CA231	QCC11EM-104V	C-CAPACITOR	.10MF 20% 25V	
CA232	QEK41EM-475	E-CAPACITOR	4.7MF 20% 25V	
CA233	QCBBIHK-221Y	C-CAPACITOR	220PF 10% 50V	
CA234	QFN41HJ-123	M-CAPACITOR	.012MF 5% 50V	
CA241	QCBBIHK-331Y	C-CAPACITOR	330PF 10% 50V	
CA301	QET41AM-107	E-CAPACITOR	100MF 20% 10V	
CA302	QET41AM-476	E-CAPACITOR	4.7MF 20% 10V	
CA304	QET41HM-475	E-CAPACITOR	4.7MF 20% 50V	
CA305	QET41HM-475	E-CAPACITOR	4.7MF 20% 50V	
CA315	QET41CM-106	E-CAPACITOR	10MF 20% 16V	
CA321	QET41AM-476	E-CAPACITOR	4.7MF 20% 10V	
CA322	QET41AM-476	E-CAPACITOR	4.7MF 20% 10V	
CA323	QET41AM-226	E-CAPACITOR	22MF 20% 10V	
CA324	QCVB1CM-103Y	C-CAPACITOR	.010MF 30% 16V	
CA341	QET41CM-106	E-CAPACITOR	10MF 20% 16V	
CA342	QFLC1HJ-473ZM	M-CAPACITOR	.047MF 5% 50V	
CA343	C1-PARTS838594	M-CAPACITOR	.010MF 5% 50V	
CA344	QETC1HM-104Z	E-CAPACITOR	.10MF 20% 50V	
CA345	QFP32AJ-123ZM	PP-CAPACITOR	.012MF 5% 100V	
CA346	QFN41HJ-222	M-CAPACITOR	2200PF 5% 50V	
CA347	QCV41HK-102	C-CAPACITOR	1000PF 10% 50V	
CA348	QCC31EM-333ZV	C-CAPACITOR	.039MF 20% 25V	
CA349	QCVB1CM-103Y	C-CAPACITOR	.010MF 30% 16V	
CA350	QES11HJ-331	C-CAPACITOR	330PF 5% 50V	
CA353	QFP31HJ-102ZM	PP-CAPACITOR	1000PF 5% 50V	
CA354	QCS11HJ-151	C-CAPACITOR	150PF 5% 50V	
CB121	QFLC1HJ-104ZM	M-CAPACITOR	.10MF 5% 50V	
CB122	QFLC1HJ-104ZM	M-CAPACITOR	.10MF 5% 50V	
CB221	QFLC1HJ-104ZM	M-CAPACITOR	.10MF 5% 50V	
CB222	QFLC1HJ-104ZM	M-CAPACITOR	.10MF 5% 50V	
CNA31	TTL25V-003	CONNECTOR		
CNA32	VMC0040-007	CONNECTOR		
CNA35	VMC0040-010	CONNECTOR		
CNA36	EMV7122-004Z	SOCKET		
CNU31	VMC0163-015	CONNECTOR	TO U-COM	
CNU32	VMC0163-014	CONNECTOR	TO U-COM	
CN101	VMC0238-005Z	CONNECTOR	H P	
CN301	VMC0041-004	CONNECTOR	TEST-POINT	
CN302	EMV7122-005Z	SOCKET	TO CD	
CN901	TTL25V-003	CONNECTOR		
D 121	1SS133	SI DIODE		
D 221	1SS133	SI DIODE		
D 321	1SS133	SI DIODE		
D 353	1SS133	SI DIODE		
D 354	1SS133	SI DIODE		
D 361	RD5-1JSAB1	ZENER DIODE		
D 381	1SS133	SI DIODE		
D 382	1SS133	SI DIODE		
D 901	MTZ6-8JC	ZENER DIODE		
D 902	1SS133	SI DIODE		
D 903	1SS133	SI DIODE		

REF.	PARTS NO.	PARTS NAME	REMARKS	SUFFIX
Q 953	DTC114YS	TRANSISTOR		
Q 991	2SA952(L.K)	TRANSISTOR		
Q 995	D1A144ES	TRANSISTOR	HDUB EQ	
QA121	2SC2785	TRANSISTOR	REC MUTE	
QA122	DTC114TN	TRANSISTOR	HDUB EQ	
QA221	2SC2785	TRANSISTOR	REC MUTE	
QA222	DTC114TN	TRANSISTOR	A/B SW	
QA301	DTC114YS	TRANSISTOR	ALC SW	
QA321	DTC114YS	TRANSISTOR		
QA341	2SC945A	TRANSISTOR		
QA342	2SC945A	TRANSISTOR		
QA343	2SC2785	TRANSISTOR		
QA344	2SC2785	TRANSISTOR		
QA345	2SC2785	TRANSISTOR		
QA347	2SC2785	TRANSISTOR		
QA351	DTC144ES	TRANSISTOR		
QA352	2SC2785	TRANSISTOR		
QA361	2SA952(L.K)	TRANSISTOR		
QA362	DTC114YS	TRANSISTOR		
R 101	QRD161J-331	CARBON RESISTOR	330 5% 1/6W	
R 102	QRD161J-331	CARBON RESISTOR	330 5% 1/6W	
R 105	QRD161J-273	CARBON RESISTOR	27K 5% 1/6W	
R 106	QRD161J-2R2	CARBON RESISTOR	2.2 5% 1/6W	
R 107	QRD161J-2R2	CARBON RESISTOR	2.2 5% 1/6W	
R 108	QRD161J-2R2	CARBON RESISTOR	2.2 5% 1/6W	
R 121	QRD161J-471	CARBON RESISTOR	470 5% 1/6W	
R 122	QRD161J-103	CARBON RESISTOR	10K 5% 1/6W	
R 123	QRD161J-333	CARBON RESISTOR	33K 5% 1/6W	
R 124	QRD161J-274	CARBON RESISTOR	270K 5% 1/6W	
R 125	QRD161J-274	CARBON RESISTOR	270K 5% 1/6W	
R 126	QRD161J-103	CARBON RESISTOR	10K 5% 1/6W	
R 127	QRD161J-224	CARBON RESISTOR	220K 5% 1/6W	
R 141	QRD161J-104	CARBON RESISTOR	100K 5% 1/6W	
R 142	QRD161J-473	CARBON RESISTOR	47K 5% 1/6W	
R 143	QRD161J-393	CARBON RESISTOR	39K 5% 1/6W	
R 144	QRD161J-562	CARBON RESISTOR	5.6K 5% 1/6W	
R 146	QRD161J-682	CARBON RESISTOR	6.8K 5% 1/6W	
R 150	QRD161J-101	CARBON RESISTOR	100 5% 1/6W	
R 151	QRD161J-393	CARBON RESISTOR	39K 5% 1/6W	
R 152	QRD161J-183	CARBON RESISTOR	18K 5% 1/6W	
R 153	QRD161J-104	CARBON RESISTOR	100K 5% 1/6W	
R 155	QRD161J-333	CARBON RESISTOR	33K 5% 1/6W	
R 157	QRD161J-682	CARBON RESISTOR	6.8K 5% 1/6W	
R 158	QRD161J-163	CARBON RESISTOR	16K 5% 1/6W	
R 161	QRD161J-222	CARBON RESISTOR	2.2K 5% 1/6W	
R 181	QRD161J-102	CARBON RESISTOR	1.0K 5% 1/6W	
R 183	QRD161J-822	CARBON RESISTOR	8.2K 5% 1/6W	
R 186	QRD161J-332	CARBON RESISTOR	3.3K 5% 1/6W	
R 187	QRD161J-102	CARBON RESISTOR	1.0K 5% 1/6W	
R 188	QRD161J-102	CARBON RESISTOR	1.0K 5% 1/6W	
R 201	QRD161J-331	CARBON RESISTOR	330 5% 1/6W	
R 202	QRD161J-331	CARBON RESISTOR	330 5% 1/6W	
R 205	QRD161J-273	CARBON RESISTOR	27K 5% 1/6W	
R 206	QRD161J-2R2	CARBON RESISTOR	2.2 5% 1/6W	
R 207	QRD161J-2R2	CARBON RESISTOR	2.2 5% 1/6W	

REF.	PARTS NO.	PARTS NAME	REMARKS	SUFFIX
R 208	QRD161J-121	CARBON RESISTOR	120 5% 1/6W	
R 221	QRD161J-471	CARBON RESISTOR	470 5% 1/6W	
R 223	QRD161J-103	CARBON RESISTOR	10K 5% 1/6W	
R 225	QRD161J-333	CARBON RESISTOR	33K 5% 1/6W	
R 224	QRD161J-274	CARBON RESISTOR	270K 5% 1/6W	
R 225	QRD161J-274	CARBON RESISTOR	270K 5% 1/6W	
R 226	QRD161J-103	CARBON RESISTOR	10K 5% 1/6W	
R 227	QRD161J-224	CARBON RESISTOR	220K 5% 1/6W	
R 241	QRD161J-104	CARBON RESISTOR	100K 5% 1/6W	
R 242	QRD161J-473	CARBON RESISTOR	47K 5% 1/6W	
R 243	QRD161J-393	CARBON RESISTOR	39K 5% 1/6W	
R 244	QRD161J-562	CARBON RESISTOR	5.6K 5% 1/6W	
R 246	QRD161J-682	CARBON RESISTOR	6.8K 5% 1/6W	
R 250	QRD161J-101	CARBON RESISTOR	100 5% 1/6W	
R 251	QRD161J-393	CARBON RESISTOR	39K 5% 1/6W	
R 253	QRD161J-183	CARBON RESISTOR	18K 5% 1/6W	
R 253	QRD161J-104	CARBON RESISTOR	100K 5% 1/6W	
R 255	QRD161J-333	CARBON RESISTOR	33K 5% 1/6W	
R 257	QRD161J-682	CARBON RESISTOR	6.8K 5% 1/6W	
R 258	QRD161J-163	CARBON RESISTOR	16K 5% 1/6W	
R 261	QRD161J-222	CARBON RESISTOR	2.2K 5% 1/6W	
R 281	QRD161J-102	CARBON RESISTOR	1.0K 5% 1/6W	
R 283	QRD161J-822	CARBON RESISTOR	8.2K 5% 1/6W	
R 286	QRD161J-332	CARBON RESISTOR	3.3K 5% 1/6W	
R 287	QRD161J-102	CARBON RESISTOR	1.0K 5% 1/6W	
R 288	QRD161J-102	CARBON RESISTOR	1.0K 5% 1/6W	
R 321	QRD161J-102	CARBON RESISTOR	1.0K 5% 1/6W	
R 322	QRD161J-102	CARBON RESISTOR	1.0K 5% 1/6W	
R 323	QRD161J-2R2	CARBON RESISTOR	2.2 5% 1/6W	
R 324	QRD161J-473	CARBON RESISTOR	47K 5% 1/6W	
R 325	QRD161J-125	CARBON RESISTOR	1.2M 5% 1/6W	
R 326	QRD161J-103	CARBON RESISTOR	10K 5% 1/6W	
R 341	QRD161J-103	CARBON RESISTOR	10K 5% 1/6W	
R 342	QRD161J-103	CARBON RESISTOR	10K 5% 1/6W	
R 343	QRD161J-101	CARBON RESISTOR	100 5% 1/6W	
R 361	QRD161J-103	CARBON RESISTOR	10K 5% 1/6W	
R 362	QRD161J-103	CARBON RESISTOR	10K 5% 1/6W	
R 366	QRD161J-332	CARBON RESISTOR	3.3K 5% 1/6W	
R 368	QRD161J-332	CARBON RESISTOR	3.3K 5% 1/6W	
R 369	QRD161J-332	CARBON RESISTOR	3.3K 5% 1/6W	
R 370	QRD161J-391	CARBON RESISTOR	390 5% 1/6W	
R 371	QRD161J-820	CARBON RESISTOR	82 5% 1/6W	
R 372	QRD161J-164YT	CARBON RESISTOR	160K 5% 1/6W	
R 373	QRD161J-102	CARBON RESISTOR	1.0K 5% 1/6W	
R 374	QRD161J-102	CARBON RESISTOR	1.0K 5% 1/6W	
R 383	QRD161J-682	CARBON RESISTOR	6.8K 5% 1/6W	
R 384	QRD161J-271	CARBON RESISTOR	270 5% 1/6W	
R 385	QRD161J-271	CARBON RESISTOR	270 5% 1/6W	
R 901	QRD161J-471	CARBON RESISTOR	470 5% 1/6W	
R 902	QRD161J-564	CARBON RESISTOR	560K 5% 1/6W	
R 903	QRD161J-471	CARBON RESISTOR	470 5% 1/6W	
R 904	QRD161J-473	CARBON RESISTOR	47K 5% 1/6W	
R 905	QRD161J-682	CARBON RESISTOR	6.8K 5% 1/6W	
R 906	QRD161J-223	CARBON RESISTOR	22K 5% 1/6W	
R 907	QRD161J-102	CARBON RESISTOR	1.0K 5% 1/6W	

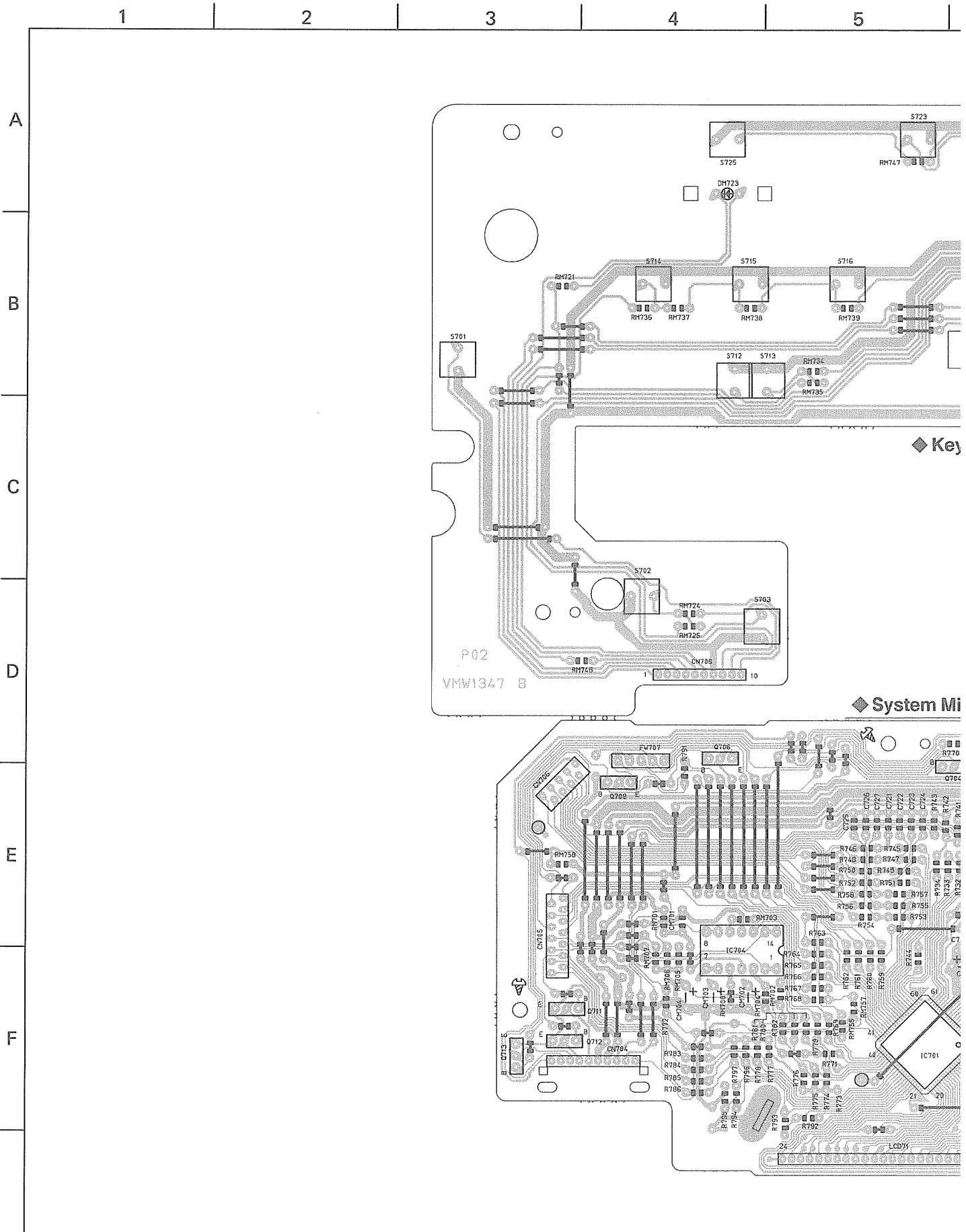
BLOCK NO. 01

BLOCK NO. 01

REF.	PARTS NO.	PARTS NAME	REMARKS	SUFFIX
RA206	GRD167J-562	CARBON RESISTOR	5.6K 5% 1/6W	
RA207	GRD161J-153	CARBON RESISTOR	15K 5% 1/6W	
RA208	GRD161J-183	CARBON RESISTOR	18K 5% 1/6W	
RA211	GRD161J-153	CARBON RESISTOR	15K 5% 1/6W	
RA221	GRD161J-273	CARBON RESISTOR	27K 5% 1/6W	
RA222	GRD161J-823	CARBON RESISTOR	82K 5% 1/6W	
RA223	GRD161J-681	CARBON RESISTOR	680 5% 1/6W	
RA224	GRD161J-122	CARBON RESISTOR	1.2K 5% 1/6W	
RA225	GRD161J-560	CARBON RESISTOR	56 5% 1/6W	
RA226	GRD161J-561	CARBON RESISTOR	560 5% 1/6W	
RA227	GRD161J-820	CARBON RESISTOR	82 5% 1/6W	
RA228	GRD161J-472	CARBON RESISTOR	4.7K 5% 1/6W	
RA229	GRD161J-103	CARBON RESISTOR	10K 5% 1/6W	
RA230	GRD161J-472	CARBON RESISTOR	4.7K 5% 1/6W	
RA231	GRD161J-392	CARBON RESISTOR	3.9K 5% 1/6W	
RA322	GRD161J-333	CARBON RESISTOR	33K 5% 1/6W	
RA241	GRD167J-562	CARBON RESISTOR	5.6K 5% 1/6W	
RA301	GRD161J-221	CARBON RESISTOR	220 5% 1/6W	
RA303	GRD161J-333	CARBON RESISTOR	33K 5% 1/6W	
RA307	GRD161J-333	CARBON RESISTOR	33K 5% 1/6W	
RA308	GRD161J-473	CARBON RESISTOR	47K 5% 1/6W	
RA309	GRD161J-472	CARBON RESISTOR	4.7K 5% 1/6W	
RA312	GRD161J-103	CARBON RESISTOR	10K 5% 1/6W	
RA315	GRD161J-820	CARBON RESISTOR	82 5% 1/6W	
RA317	GRD161J-272	CARBON RESISTOR	2.7K 5% 1/6W	
RA321	GRD161J-101	CARBON RESISTOR	100 5% 1/6W	
RA322	GRD161J-105	CARBON RESISTOR	1.0M 5% 1/6W	
RA323	GRD161J-472	CARBON RESISTOR	4.7K 5% 1/6W	
RA340	GRD161J-680	CARBON RESISTOR	68 5% 1/6W	
RA341	GRD161J-560	CARBON RESISTOR	56 5% 1/6W	
RA342	GRD161J-101	CARBON RESISTOR	100 5% 1/6W	
RA343	GRD161J-3R9	CARBON RESISTOR	3.9 5% 1/6W	
RA344	GRD161J-153	CARBON RESISTOR	15K 5% 1/6W	
RA345	GRD161J-473	CARBON RESISTOR	47K 5% 1/6W	
RA346	GRD161J-182	CARBON RESISTOR	1.8K 5% 1/6W	
RA347	GRD161J-123	CARBON RESISTOR	12K 5% 1/6W	
RA348	GRD161J-123	CARBON RESISTOR	12K 5% 1/6W	
RA349	GRD161J-473	CARBON RESISTOR	47K 5% 1/6W	
RA350	GRD161J-182	CARBON RESISTOR	1.8K 5% 1/6W	
RA351	GRD161J-103	CARBON RESISTOR	10K 5% 1/6W	
RA352	GRD161J-473	CARBON RESISTOR	47K 5% 1/6W	
RA353	GRD161J-394	CARBON RESISTOR	390K 5% 1/6W	
RA354	GRD161J-473	CARBON RESISTOR	47K 5% 1/6W	
RA356	GRD161J-822	CARBON RESISTOR	8.2K 5% 1/6W	
RA361	GRD161J-302	CARBON RESISTOR	3.0K 5% 1/6W	
RA363	GRD161J-473	CARBON RESISTOR	47K 5% 1/6W	
RB121	GRD161J-472	CARBON RESISTOR	4.7K 5% 1/6W	
RB122	GRD161J-222	CARBON RESISTOR	2.2K 5% 1/6W	
RB123	GRD161J-152	CARBON RESISTOR	1.5K 5% 1/6W	
RB221	GRD161J-472	CARBON RESISTOR	4.7K 5% 1/6W	
RB222	GRD161J-222	CARBON RESISTOR	2.2K 5% 1/6W	
RB223	GRD161J-152	CARBON RESISTOR	1.5K 5% 1/6W	
RM141	GRD161J-563	CARBON RESISTOR	56K 5% 1/6W	U
RM241	GRD111J-563Y	CARBON RESISTOR	56K 5% 1/6W	U
S 999	VNZ0068-001	SELECT SWITCH	VOLTAGE SELECT	U
VRA41	QVPA603-223A	SEMI.-V. RESISTOR		
VRA61	QVPA603-102AZA	SEMI.-V. RESISTOR		

REF.	PARTS NO.	PARTS NAME	REMARKS	SUFFIX
R 908	GRD161J-821	CARBON RESISTOR	820 5% 1/6W	
R 909	GRD161J-222	CARBON RESISTOR	2.2K 5% 1/6W	
R 911	GRD161J-681	CARBON RESISTOR	680 5% 1/6W	
R 912	GRD161J-564	CARBON RESISTOR	560K 5% 1/6W	
R 913	GRD161J-471	CARBON RESISTOR	470 5% 1/6W	
R 914	GRD161J-473	CARBON RESISTOR	47K 5% 1/6W	
R 917	GRD161J-102	CARBON RESISTOR	1.0K 5% 1/6W	
R 918	GRD161J-122	CARBON RESISTOR	1.2K 5% 1/6W	
R 919	GRD161J-222	CARBON RESISTOR	2.2K 5% 1/6W	
R 921	GRD161J-272	CARBON RESISTOR	2.7K 5% 1/6W	
R 923	GRD161J-471	CARBON RESISTOR	470 5% 1/6W	
R 924	GRD161J-224	CARBON RESISTOR	220K 5% 1/6W	
R 925	GRD161J-224	CARBON RESISTOR	220K 5% 1/6W	
R 926	GRD161J-103	CARBON RESISTOR	10K 5% 1/6W	
R 927	GRD161J-822	CARBON RESISTOR	8.2K 5% 1/6W	
R 928	GRD161J-822	CARBON RESISTOR	8.2K 5% 1/6W	
R 931	GRD161J-151	CARBON RESISTOR	150 5% 1/6W	
R 932	GRD167J-562	CARBON RESISTOR	5.6K 5% 1/6W	
R 933	GRD167J-682	CARBON RESISTOR	6.8K 5% 1/6W	
R 941	GRD161J-471	CARBON RESISTOR	470 5% 1/6W	
R 942	GRD161J-223	CARBON RESISTOR	22K 5% 1/6W	
R 943	GRD161J-103	CARBON RESISTOR	10K 5% 1/6W	
R 944	GRD161J-103	CARBON RESISTOR	10K 5% 1/6W	
R 951	GRD161J-473	CARBON RESISTOR	47K 5% 1/6W	
R 952	GRD161J-152	CARBON RESISTOR	1.5K 5% 1/6W	
R 991	GRD161J-182	CARBON RESISTOR	1.8K 5% 1/6W	
R 992	GRD167J-332	CARBON RESISTOR	3.3K 5% 1/6W	
R 995	GRD161J-472	CARBON RESISTOR	4.7K 5% 1/6W	
RA101	GRD161J-104	CARBON RESISTOR	100K 5% 1/6W	
RA102	GRD161J-104	CARBON RESISTOR	100K 5% 1/6W	
RA103	GRD161J-560	CARBON RESISTOR	56 5% 1/6W	
RA104	GRD161J-123	CARBON RESISTOR	12K 5% 1/6W	
RA105	GRD161J-153	CARBON RESISTOR	15K 5% 1/6W	
RA106	GRD167J-562	CARBON RESISTOR	5.6K 5% 1/6W	
RA107	GRD161J-153	CARBON RESISTOR	15K 5% 1/6W	
RA108	GRD161J-183	CARBON RESISTOR	18K 5% 1/6W	
RA111	GRD161J-153	CARBON RESISTOR	15K 5% 1/6W	
PA121	GRD161J-273	CARBON RESISTOR	27K 5% 1/6W	
RA122	GRD161J-823	CARBON RESISTOR	82K 5% 1/6W	
RA123	GRD161J-681	CARBON RESISTOR	680 5% 1/6W	
RA124	GRD161J-122	CARBON RESISTOR	1.2K 5% 1/6W	
RA125	GRD161J-560	CARBON RESISTOR	56 5% 1/6W	
RA126	GRD161J-561	CARBON RESISTOR	560 5% 1/6W	
RA127	GRD161J-820	CARBON RESISTOR	82 5% 1/6W	
RA128	GRD161J-472	CARBON RESISTOR	4.7K 5% 1/6W	
RA129	GRD161J-103	CARBON RESISTOR	10K 5% 1/6W	
RA130	GRD161J-472	CARBON RESISTOR	4.7K 5% 1/6W	
RA131	GRD161J-392	CARBON RESISTOR	3.9K 5% 1/6W	
RA132	GRD161J-333	CARBON RESISTOR	33K 5% 1/6W	
RA141	GRD167J-562	CARBON RESISTOR	5.6K 5% 1/6W	
RA201	GRD161J-104	CARBON RESISTOR	100K 5% 1/6W	
RA202	GRD161J-104	CARBON RESISTOR	100K 5% 1/6W	
RA203	GRD161J-560	CARBON RESISTOR	56 5% 1/6W	
RA204	GRD161J-123	CARBON RESISTOR	12K 5% 1/6W	
RA205	GRD161J-153	CARBON RESISTOR	15K 5% 1/6W	

■ System Microprocessor/Key Switch Board Block No. 0 3



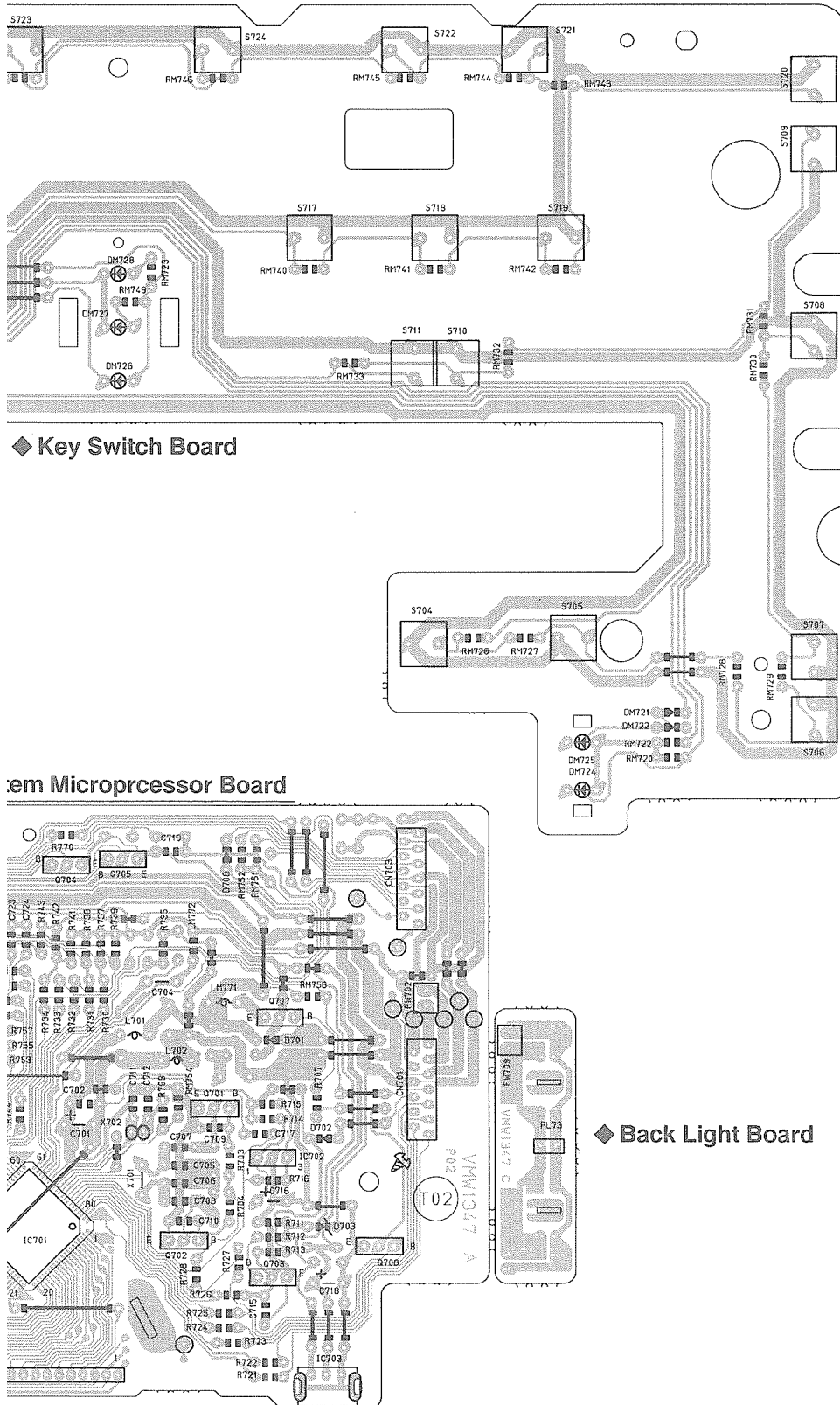


Fig. 11

● System Microprocessor/Key Switch Board Parts List

BLOCK NO. 03		BLOCK NO. 03		BLOCK NO. 03		BLOCK NO. 03	
A	REF.	PARTS NO.	PARTS NAME	REMARKS	SUFFIX		
	LC071	VG11157-001	LCD	LCD			
	LM771	VQ0028-100Z	INDUCTOR	LCD			
	LM772	VQ0018-4R7	INDUCTOR	=R705			
	PL 73	VGZ0001-060	LAMP				
	Q 701	2SA1175	TRANSISTOR				
	Q 702	2SA1175	TRANSISTOR				
	Q 703	2SC2785	TRANSISTOR				
	Q 704	DTC1147STP	TRANSISTOR				
	Q 705	DTC1144YS	TRANSISTOR				
	Q 706	DTC1144YS	TRANSISTOR				
	Q 707	2SA952(L,K)	TRANSISTOR				
	Q 708	DTC1144YS	TRANSISTOR				
	Q 709	DTC1144YS	TRANSISTOR				
	Q 711	DTC1144YS	TRANSISTOR				
	Q 712	DTC1144ES	TRANSISTOR				
	Q 713	DTC1144ES	TRANSISTOR				
	R 703	QRD161J-681	CARBON RESISTOR	680 5% 1/6W			
	R 704	QRD161J-681	CARBON RESISTOR	680 5% 1/6W			
	R 707	QRD161J-222	CARBON RESISTOR	2.2K 5% 1/6W			
	R 711	QRD161J-103	CARBON RESISTOR	10K 5% 1/6W			
	R 712	QRD161J-473	CARBON RESISTOR	47K 5% 1/6W			
	R 713	QRD161J-104	CARBON RESISTOR	100K 5% 1/6W			
	R 714	QRD161J-103	CARBON RESISTOR	10K 5% 1/6W			
	R 715	QRD161J-103	CARBON RESISTOR	10K 5% 1/6W			
	R 716	QRD161J-103	CARBON RESISTOR	10K 5% 1/6W			
	R 721	QRD161J-222	CARBON RESISTOR	2.2K 5% 1/6W			
	R 722	QRD161J-472	CARBON RESISTOR	4.7K 5% 1/6W			
	R 723	QRD161J-222	CARBON RESISTOR	2.2K 5% 1/6W			
	R 724	QRD161J-222	CARBON RESISTOR	2.2K 5% 1/6W			
	R 725	QRD161J-222	CARBON RESISTOR	2.2K 5% 1/6W			
	R 726	QRD161J-222	CARBON RESISTOR	2.2K 5% 1/6W			
	R 727	QRD161J-222	CARBON RESISTOR	2.2K 5% 1/6W			
	R 728	QRD161J-222	CARBON RESISTOR	2.2K 5% 1/6W			
	R 730	QRD161J-103	CARBON RESISTOR	10K 5% 1/6W			
	R 731	QRD161J-103	CARBON RESISTOR	10K 5% 1/6W			
	R 732	QRD161J-103	CARBON RESISTOR	10K 5% 1/6W			
	R 733	QRD161J-222	CARBON RESISTOR	2.2K 5% 1/6W			
	R 734	QRD161J-222	CARBON RESISTOR	2.2K 5% 1/6W			
	R 735	QRD161J-102	CARBON RESISTOR	1.0K 5% 1/6W			
	R 737	QRD161J-103	CARBON RESISTOR	10K 5% 1/6W			
	R 738	QRD161J-103	CARBON RESISTOR	10K 5% 1/6W			
	R 739	QRD161J-103	CARBON RESISTOR	10K 5% 1/6W			
	R 741	QRD161J-103	CARBON RESISTOR	10K 5% 1/6W			
	R 742	QRD161J-102	CARBON RESISTOR	1.0K 5% 1/6W			
	R 743	QRD161J-103	CARBON RESISTOR	10K 5% 1/6W			
	R 744	QRD161J-222	CARBON RESISTOR	2.2K 5% 1/6W			
	R 745	QRD161J-222	CARBON RESISTOR	2.2K 5% 1/6W			
	R 746	QRD161J-102	CARBON RESISTOR	1.0K 5% 1/6W			
	R 747	QRD161J-102	CARBON RESISTOR	1.0K 5% 1/6W			
	R 748	QRD161J-102	CARBON RESISTOR	1.0K 5% 1/6W			
	R 749	QRD161J-102	CARBON RESISTOR	1.0K 5% 1/6W			
	R 750	QRD161J-102	CARBON RESISTOR	1.0K 5% 1/6W			
	R 751	QRD161J-102	CARBON RESISTOR	1.0K 5% 1/6W			
	R 752	QRD161J-102	CARBON RESISTOR	1.0K 5% 1/6W			
	R 753	QRD161J-102	CARBON RESISTOR	1.0K 5% 1/6W			

BLOCK NO. 03		BLOCK NO. 03		BLOCK NO. 03		BLOCK NO. 03	
A	REF.	PARTS NO.	PARTS NAME	REMARKS	SUFFIX		
	BD952	VH7900-002	BUS WIRE				
	C 701	0ET41AM-227	E-CAPACITOR	220MF 20% 10V	U		
	C 702	VCP0012-105A	C-CAPACITOR	1MF	C-J		
	C 702	0CVB1CM-103Y	C-CAPACITOR	.010MF 20% 16V			
	C 704	0FV41HJ-104ZM	FILM CAPACITOR	.10MF 5% 50V			
	C 705	0CT30CH-200Y	C-CAPACITOR	20PF 5% 50V			
	C 706	0CT30CH-200Y	C-CAPACITOR	20PF 5% 50V			
	C 707	0CS31HJ-360	C-CAPACITOR	36PF 5% 50V			
	C 708	0CS31HJ-390Z	C-CAPACITOR	39PF 5% 50V			
	C 709	0CBB1HK-102Y	C-CAPACITOR	1000PF 10% 50V			
	C 710	0CBB1HK-102Y	C-CAPACITOR	1000PF 10% 50V			
	C 711	0CT30CH-200Y	C-CAPACITOR	20PF 5% 50V			
	C 712	0CT30CH-200Y	C-CAPACITOR	20PF 5% 50V			
	C 715	0CVB1CM-103Y	C-CAPACITOR	.010MF 20% 16V			
	C 716	0ET41HM-475	E-CAPACITOR	4.7MF 20% 50V			
	C 717	0CVB1CM-103Y	C-CAPACITOR	.010MF 20% 16V			
	C 718	0ET41AM-476	E-CAPACITOR	47MF 20% 10V			
	C 719	0CXB1CM-222Y	C-CAPACITOR	2200PF 20% 16V			
	C 721	0CVB1CM-103Y	C-CAPACITOR	.010MF 20% 16V			
	C 722	0CBB1HK-471Y	C-CAPACITOR	470PF 10% 50V			
	C 723	0CBB1HK-471Y	C-CAPACITOR	470PF 10% 50V			
	C 724	0CBB1HK-471Y	C-CAPACITOR	470PF 10% 50V			
	C 725	0CBB1HK-471Y	C-CAPACITOR	470PF 10% 50V			
	C 726	0CBB1HK-471Y	C-CAPACITOR	470PF 10% 50V			
	C 727	0CBB1HK-471Y	C-CAPACITOR	470PF 10% 50V			
	CM701	0CVB1CM-103Y	C-CAPACITOR	.010MF 20% 16V			
	CM702	0ET41HM-105	E-CAPACITOR	1.0MF 20% 50V			
	CM703	0ET41HM-105	E-CAPACITOR	1.0MF 20% 50V			
	CM704	0ET41HM-105	E-CAPACITOR	1.0MF 20% 50V			
	CM705	0ET41HM-105	E-CAPACITOR	1.0MF 20% 50V			
	CM706	0ET41HM-105	E-CAPACITOR	1.0MF 20% 50V			
	CN701	VMC0163-R13	CONNECTOR	TO AMP			
	CN703	VMC0161-R12	CONNECTOR	TO CHANGER			
	CN704	VMC0192-S10	CONNECTOR	TO SW			
	CN705	VMC0163-R14	CONNECTOR	TO AMP			
	CN706	VMC0163-R09	CONNECTOR	TO CD			
	CN708	VMC0192-P10	CONNECTOR	TO AMP			
	D 701	1SS119-02	SI DIODE				
	D 702	1SS119-02	SI DIODE				
	D 703	1SS119-02	SI DIODE				
	D 708	1SS119-02	SI DIODE				
	DM720	1SS119-02	SI DIODE				
	DM721	1SS119-02	SI DIODE				
	DM722	1SS119-02	SI DIODE				
	DM723	SLR-34VCF25	LED	AHB			
	DM724	SLR-34MGF42	LED	POWER			
	DM725	SLR-34VCF3	LED	STBY			
	DM726	SLR-34MGF42	LED	EXTRA			
	DM727	SLR-34VCF3F	LED	CHANGER			
	DM728	SLR-34VCF3F	LED				
	IC701	UPD753366C-114	IC	CPU	C-J		
	IC701	UPD753366C-113	IC	CPU	U		
	IC702	PST600H-T	IC	RESET			
	IC703	SBX1790-52	REMOCON SENSOR	REMOCON			
	IC704	BA10324	IC				
	L 701	VQ0028-100Z	INDUCTOR				
	L 702	VQZ0048-009	INDUCTOR				

BLOCK NO. 03111111

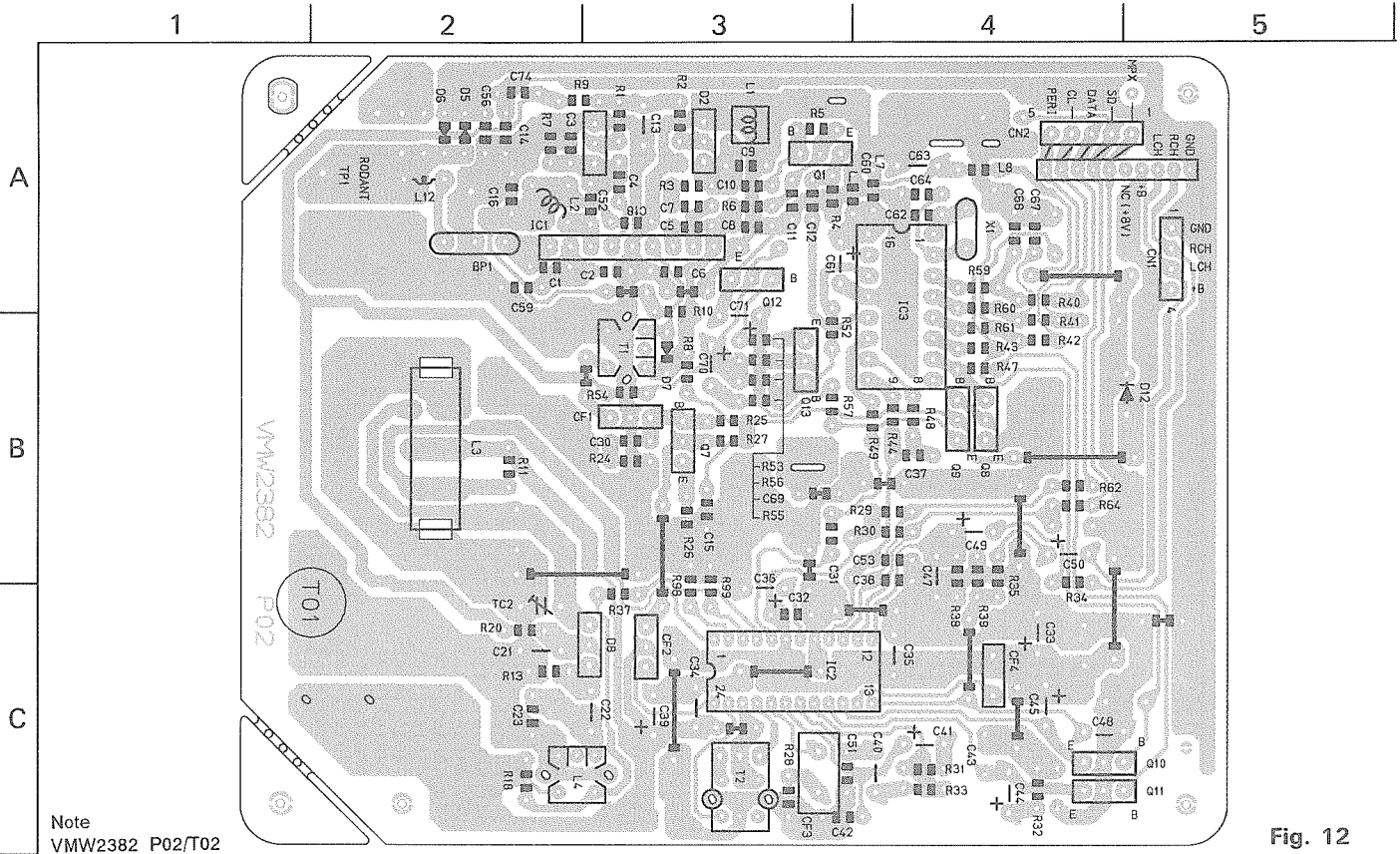
REF.	PARTS NO.	PARTS NAME	REMARKS	SUFFIX
R 754	QRD161J-102	CARBON RESISTOR	1.0K 5% 1/6W	
R 755	QRD161J-102	CARBON RESISTOR	1.0K 5% 1/6W	
R 756	QRD161J-102	CARBON RESISTOR	1.0K 5% 1/6W	
R 757	QRD161J-102	CARBON RESISTOR	1.0K 5% 1/6W	
R 758	QRD161J-102	CARBON RESISTOR	1.0K 5% 1/6W	
R 759	QRD161J-222	CARBON RESISTOR	2.2K 5% 1/6W	
R 760	QRD161J-222	CARBON RESISTOR	2.2K 5% 1/6W	
R 761	QRD161J-102	CARBON RESISTOR	1.0K 5% 1/6W	
R 762	QRD161J-103	CARBON RESISTOR	1.0K 5% 1/6W	
R 763	QRD161J-473	CARBON RESISTOR	47K 5% 1/6W	
R 764	QRD161J-103	CARBON RESISTOR	10K 5% 1/6W	
R 765	QRD161J-103	CARBON RESISTOR	10K 5% 1/6W	
R 766	QRD161J-222	CARBON RESISTOR	2.2K 5% 1/6W	
R 767	QRD161J-222	CARBON RESISTOR	2.2K 5% 1/6W	
R 768	QRD161J-102	CARBON RESISTOR	1.0K 5% 1/6W	
R 769	QRD161J-102	CARBON RESISTOR	1.0K 5% 1/6W	
R 770	QRD161J-102	CARBON RESISTOR	1.0K 5% 1/6W	
R 771	QRD161J-222	CARBON RESISTOR	2.2K 5% 1/6W	
R 772	QRD161J-104	CARBON RESISTOR	100K 5% 1/6W	
R 773	QRD161J-562	CARBON RESISTOR	5.6K 5% 1/6W	
R 774	QRD161J-562	CARBON RESISTOR	5.6K 5% 1/6W	
R 775	QRD161J-562	CARBON RESISTOR	5.6K 5% 1/6W	
R 776	QRD161J-562	CARBON RESISTOR	5.6K 5% 1/6W	
R 777	QRD161J-562	CARBON RESISTOR	5.6K 5% 1/6W	
R 778	QRD161J-562	CARBON RESISTOR	5.6K 5% 1/6W	
R 779	QRD161J-222	CARBON RESISTOR	2.2K 5% 1/6W	
R 780	QRD161J-104	CARBON RESISTOR	100K 5% 1/6W	
R 781	QRD161J-224	CARBON RESISTOR	220K 5% 1/6W	
R 782	QRD161J-224	CARBON RESISTOR	220K 5% 1/6W	
R 783	QRD161J-102	CARBON RESISTOR	1.0K 5% 1/6W	
R 784	QRD161J-222	CARBON RESISTOR	2.2K 5% 1/6W	
R 785	QRD161J-222	CARBON RESISTOR	2.2K 5% 1/6W	
R 786	QRD161J-222	CARBON RESISTOR	2.2K 5% 1/6W	
R 791	QRD161J-102	CARBON RESISTOR	1.0K 5% 1/6W	
R 792	QRD161J-103	CARBON RESISTOR	10K 5% 1/6W	
R 793	QRD161J-104	CARBON RESISTOR	100K 5% 1/6W	
R 794	QRD161J-104	CARBON RESISTOR	100K 5% 1/6W	
R 795	QRD161J-104	CARBON RESISTOR	100K 5% 1/6W	
R 796	QRD161J-562	CARBON RESISTOR	5.6K 5% 1/6W	
R 797	QRD161J-562	CARBON RESISTOR	5.6K 5% 1/6W	
R 799	QRD161J-223	CARBON RESISTOR	22K 5% 1/6W	
RM701	QRD161J-101	CARBON RESISTOR	100 5% 1/6W	
RM702	QRD161J-103	CARBON RESISTOR	10K 5% 1/6W	
RM703	QRD161J-103	CARBON RESISTOR	10K 5% 1/6W	
RM704	QRD161J-103	CARBON RESISTOR	10K 5% 1/6W	
RM705	QRD161J-562	CARBON RESISTOR	5.6K 5% 1/6W	
RM706	QRD161J-562	CARBON RESISTOR	5.6K 5% 1/6W	
RM707	QRD161J-562	CARBON RESISTOR	5.6K 5% 1/6W	
RM721	QRD161J-221	CARBON RESISTOR	220 5% 1/6W	
RM722	QRD161J-271	CARBON RESISTOR	270 5% 1/6W	
RM723	QRD161J-221	CARBON RESISTOR	220 5% 1/6W	
RM724	QRD161J-221	CARBON RESISTOR	220 5% 1/6W	
RM725	QRD161J-681	CARBON RESISTOR	680 5% 1/6W	
RM726	QRD161J-821	CARBON RESISTOR	820 5% 1/6W	
RM727	QRD161J-152	CARBON RESISTOR	1.5K 5% 1/6W	
RM728	QRD161J-182	CARBON RESISTOR	1.8K 5% 1/6W	

BLOCK NO. 03111111

REF.	PARTS NO.	PARTS NAME	REMARKS	SUFFIX
RM729	QRD161J-222	CARBON RESISTOR	2.2K 5% 1/6W	
RM730	QRD161J-272	CARBON RESISTOR	2.7K 5% 1/6W	
RM731	QRD161J-392	CARBON RESISTOR	3.9K 5% 1/6W	
RM732	QRD161J-562	CARBON RESISTOR	5.6K 5% 1/6W	
RM733	QRD161J-103	CARBON RESISTOR	10K 5% 1/6W	
RM734	QRD161J-153	CARBON RESISTOR	15K 5% 1/6W	
RM735	QRD161J-563	CARBON RESISTOR	56K 5% 1/6W	
RM736	QRD161J-221	CARBON RESISTOR	220 5% 1/6W	
RM737	QRD161J-681	CARBON RESISTOR	680 5% 1/6W	
RM738	QRD161J-821	CARBON RESISTOR	820 5% 1/6W	
RM739	QRD161J-152	CARBON RESISTOR	1.5K 5% 1/6W	
RM740	QRD161J-182	CARBON RESISTOR	1.8K 5% 1/6W	
RM741	QRD161J-222	CARBON RESISTOR	2.2K 5% 1/6W	
RM742	QRD161J-272	CARBON RESISTOR	2.7K 5% 1/6W	
RM743	QRD161J-392	CARBON RESISTOR	3.9K 5% 1/6W	
RM744	QRD161J-562	CARBON RESISTOR	5.6K 5% 1/6W	
RM745	QRD161J-103	CARBON RESISTOR	10K 5% 1/6W	
RM746	QRD161J-153	CARBON RESISTOR	15K 5% 1/6W	
RM747	QRD161J-563	CARBON RESISTOR	56K 5% 1/6W	
RM748	QRD161J-391	CARBON RESISTOR	390 5% 1/6W	
RM749	QRD161J-221	CARBON RESISTOR	220 5% 1/6W	
RM751	QRD161J-273	CARBON RESISTOR	27K 5% 1/6W	
RM752	QRD161J-273	CARBON RESISTOR	27K 5% 1/6W	
RM754	QRD161J-105	CARBON RESISTOR	1.0M 5% 1/6W	
RM755	QRD161J-222	CARBON RESISTOR	2.2K 5% 1/6W	
RM756	QRD161J-104	CARBON RESISTOR	100K 5% 1/6W	
RM757	QRD161J-223	CARBON RESISTOR	22K 5% 1/6W	
RM758	QRD161J-473	CARBON RESISTOR	47K 5% 1/6W	
S 701	QSQA11-V04Z	TACT SWITCH	POWER	
S 702	QSQA11-V04Z	TACT SWITCH	BAND	
S 703	QSQA11-V04Z	TACT SWITCH	PRESET	
S 704	QSQA11-V04Z	TACT SWITCH	DOWN	
S 705	QSQA11-V04Z	TACT SWITCH	UP	
S 706	QSQA11-V04Z	TACT SWITCH	PLAY	
S 707	QSQA11-V04Z	TACT SWITCH	STOP	
S 708	QSQA11-V04Z	TACT SWITCH	DP/CL	
S 709	QSQA11-V04Z	TACT SWITCH	TPOS	
S 710	QSQA11-V04Z	TACT SWITCH	MEMO	
S 711	QSQA11-V04Z	TACT SWITCH	EXTRA	
S 712	QSQA11-V04Z	TACT SWITCH	REPEAT	
S 713	QSQA11-V04Z	TACT SWITCH	DCHECK	
S 714	QSQA11-V04Z	TACT SWITCH	D1	
S 715	QSQA11-V04Z	TACT SWITCH	D2	
S 716	QSQA11-V04Z	TACT SWITCH	D3	
S 717	QSQA11-V04Z	TACT SWITCH	D4	
S 718	QSQA11-V04Z	TACT SWITCH	D5	
S 719	QSQA11-V04Z	TACT SWITCH	D6	
S 720	QSQA11-V04Z	TACT SWITCH	DUB	
S 721	QSQA11-V04Z	TACT SWITCH	TRE	
S 722	QSQA11-V04Z	TACT SWITCH	BASS	
S 723	QSQA11-V04Z	TACT SWITCH	+	
S 724	QSQA11-V04Z	TACT SWITCH	-	
S 725	QSQA11-V04Z	TACT SWITCH	AHB	
X 701	M1ZCRHF4.19	CERA LOCK	MAIN	
X 702	VCX5000-002	CRYSTAL	32K	

■ Tuner Board (C/J Version)

Block No. 0 4



Note
VMW2382 P02/T02

Fig. 12

● Tuner Board Parts List (C/J Version)

REF.	PARTS NO.	PARTS NAME	REMARKS	SUFFIX
BP	1	VBR4M3B-005	BPF	
C	1	QC611HJ-200	20PF 5% 50V	
C	2	QCBB1HK-102Y	1000PF 10% 50V	
C	3	QCBB1HK-8R2Y	8.2PF 10% 50V	
C	4	QCS11HJ-100	10PF 5% 50V	
A	5	QC611HJ-180	18PF 5% 50V	
C	6	QCVB1CN-103Y	.010MF 30% 16V	
A	7	QCS11HJ-200	20PF 5% 50V	
C	8	QCVB1CN-103Y	.010MF 30% 16V	
A	9	QCBB1HK-8R2Y	8.2PF 10% 50V	
A	10	QCSB1HK-2R2Y	2.2PF 10% 50V	
C	11	QCVB1CN-103Y	.010MF 30% 16V	
C	12	QCBB1HK-151Y	150PF 10% 50V	
C	13	QCC11EM-223V	.022MF 20% 25V	
C	14	QCBB1HK-102Y	1000PF 10% 50V	
C	15	QCVB1CN-103Y	.010MF 30% 16V	
C	16	QCVB1CN-103Y	.010MF 30% 16V	
C	18	QCVB1CN-103Y	.010MF 30% 16V	
C	21	QCC11EM-473V	.047MF 20% 25V	
C	22	QFP41HJ-431	PP.CAPACITOR	
C	23	QCT30CH-120Y	12PF 5% 50V	
C	30	QCVB1CN-103Y	.010MF 30% 16V	
C	31	QCVB1CN-103Y	.010MF 30% 16V	
C	32	QCVB1CN-103Y	.010MF 30% 16V	
C	33	QET41AM-107	100MF 20% 10V	
C	34	QCC11EM-473V	.047MF 20% 25V	
C	35	QCC11EM-473V	.047MF 20% 25V	
C	36	QET41CN-106	10MF 20% 16V	
C	37	QCVB1CN-103Y	.010MF 30% 16V	
C	38	QCBB1HK-102Y	1000PF 10% 50V	
C	39	QET41CN-106	10MF 20% 16V	
C	40	QCC31EM-333ZV	.033MF 20% 25V	
C	41	QET41CN-106	10MF 20% 16V	
C	42	QCS11HJ-680	68PF 5% 50V	
C	43	QCVB1CN-103Y	.010MF 30% 16V	
C	44	QETC1HM-104Z	.10MF 20% 50V	
C	45	QET41HM-474	.47MF 20% 50V	
C	47	QCC31EM-153ZV	.015MF 20% 25V	
C	48	QCC31EM-153ZV	.015MF 20% 25V	
C	49	QET41HM-105	1.0MF 20% 50V	
C	50	QET41HM-105	1.0MF 20% 50V	
C	51	QCBB1HK-331Y	330PF 10% 50V	
C	52	QCBB1HK-102Y	1000PF 10% 50V	
C	53	QCS11HJ-150	15PF 5% 50V	
C	56	QCVB1CN-103Y	.010MF 30% 16V	
C	59	QCBB1HK-102Y	1000PF 10% 50V	
C	60	QCBB1HK-102Y	1000PF 10% 50V	
C	61	QET41AM-107	100MF 20% 10V	
C	62	QCS11HJ-100	10PF 5% 50V	
C	63	QCC11EM-473V	.047MF 20% 25V	
C	64	QCS11HJ-270	27PF 5% 50V	
C	67	QCBB1HK-101Y	100PF 10% 50V	
C	68	QCBB1HK-151Y	150PF 10% 50V	
C	69	QCVB1CN-222Y	2200PF 20% 16V	
C	70	QFV41HJ-224	.22MF 5% 50V	FILM CAPACITOR

BLOCK NO. 04

BLOCK NO. 04

REF.	PARTS NO.	PARTS NAME	REMARKS	SUFFIX
R 32	QRD161J-223	CARBON RESISTOR	22K 5% 1/6W	
R 33	QRD161J-333	CARBON RESISTOR	33K 5% 1/6W	
R 34	QRD161J-222	CARBON RESISTOR	2.2K 5% 1/6W	
R 35	QRD161J-222	CARBON RESISTOR	2.2K 5% 1/6W	
R 36	QRD161J-560	CARBON RESISTOR	56 5% 1/6W	
R 38	QRD161J-392	CARBON RESISTOR	3.9K 5% 1/6W	
R 39	QRD161J-392	CARBON RESISTOR	3.9K 5% 1/6W	
R 40	QRD161J-222	CARBON RESISTOR	2.2K 5% 1/6W	
R 41	QRD161J-222	CARBON RESISTOR	2.2K 5% 1/6W	
R 42	QRD161J-222	CARBON RESISTOR	2.2K 5% 1/6W	
R 43	QRD161J-103	CARBON RESISTOR	10K 5% 1/6W	
R 44	QRD161J-183	CARBON RESISTOR	18K 5% 1/6W	
R 47	QRD161J-103	CARBON RESISTOR	10K 5% 1/6W	
R 48	QRD161J-331	CARBON RESISTOR	330 5% 1/6W	
R 49	QRD161J-102	CARBON RESISTOR	1.0K 5% 1/6W	
R 52	QRD161J-472	CARBON RESISTOR	4.7K 5% 1/6W	
R 53	QRD161J-471	CARBON RESISTOR	470 5% 1/6W	
R 54	QRD161J-222	CARBON RESISTOR	2.2K 5% 1/6W	
R 55	QRD161J-472	CARBON RESISTOR	4.7K 5% 1/6W	
R 56	QRD161J-532	CARBON RESISTOR	3.3K 5% 1/6W	
R 57	QRD161J-102	CARBON RESISTOR	1.0K 5% 1/6W	
R 59	QRD161J-222	CARBON RESISTOR	2.2K 5% 1/6W	
R 60	QRD161J-222	CARBON RESISTOR	2.2K 5% 1/6W	
R 61	QRD161J-222	CARBON RESISTOR	2.2K 5% 1/6W	
R 62	QRD161J-102	CARBON RESISTOR	1.0K 5% 1/6W	
R 64	QRD161J-102	CARBON RESISTOR	1.0K 5% 1/6W	
R 98	QRD161J-103	CARBON RESISTOR	10K 5% 1/6W	
R 99	QRD161J-822	CARBON RESISTOR	8.2K 5% 1/6W	
T 1	VQT7F12-110	I FT	FM IF	
T 2	VQT7A21-109	I FT	FM IF	
TC 2	QAT3722-200ZM	T-CAPACITOR	MW RF	
TP 1	VMZ0015-002	POST PIN	TO ROD ANT	
X 1	V472124-A0	CRYSTAL		

REF.	PARTS NO.	PARTS NAME	REMARKS	SUFFIX
C 71	GETC1HM-335Z	E-CAPACITOR	3.3MF 20% 50V	
C 74	QCBB1HK-151Y	C-CAPACITOR	150PF 10% 50V	
CF 1	VCF2L3B-10B2	CERAMIC FILTER		
CF 2	VCF2L3B-10B2	CERAMIC FILTER		
CF 3	VCF1Z22-115Z	CERAMIC FILTER		
CF 4	CSB456F29	CERA LOCK		
CN 1	VMC0238-004Z	CONNECTOR	TO MAIN	
CN 2	VMC0238-005Z	CONNECTOR	TO U-COM	
D 1	SVC203SPA-AB-AL	VARI CAP		
D 2	SVC203SPA-AB-AL	VARI CAP		
D 5	1SS133	SI DIODE		
D 6	1SS133	SI DIODE		
D 7	1SS133	SI DIODE		
D 8	SVC344-AA	VARI CAP		
D 12	DSK10C-E	DIODE		
IC 1	TAT358P	IC		
IC 2	TA2057N	IC		
IC 3	TC9216P	IC		
L 1	VQF1B20-017	OSC COIL	FM OSC	
L 2	VQC1505-002	RF COIL	FM RF	
L 3	VQB008M-504M	BAR ANTENA	MW RF	
L 4	VQM7U02-404	OSC COIL (MW)	MW OSC	
L 7	VQP0018-4R7	INDUCTOR		
L 8	VQP0018-221	INDUCTOR		
L 12	V03047-17	COIL	RF COIL	
Q 1	2SC1923	TRANSISTOR		
Q 7	2SC1923	TRANSISTOR		
Q 8	UN4214	TRANSISTOR		
Q 9	DTA114YS	TRANSISTOR		
Q 10	2SA1175	TRANSISTOR		
Q 11	2SA1175	TRANSISTOR		
Q 12	2SC2785	TRANSISTOR		
Q 13	2SC2785	TRANSISTOR		
R 1	QRD161J-104	CARBON RESISTOR	100K 5% 1/6W	
R 2	QRD161J-473	CARBON RESISTOR	47K 5% 1/6W	
R 3	QRD167J-4R7	CARBON RESISTOR	4.7 5% 1/6W	
R 4	QRD161J-102	CARBON RESISTOR	1.0K 5% 1/6W	
R 5	QRD161J-823	CARBON RESISTOR	82K 5% 1/6W	
R 6	QRD161J-101	CARBON RESISTOR	100 5% 1/6W	
R 7	QRD161J-104	CARBON RESISTOR	100K 5% 1/6W	
R 8	QRD161J-101	CARBON RESISTOR	100 5% 1/6W	
R 9	QRD161J-102	CARBON RESISTOR	1.0K 5% 1/6W	
R 10	QRD161J-101	CARBON RESISTOR	100 5% 1/6W	
R 11	QRD167J-332	CARBON RESISTOR FOR J		
R 13	QRD161J-104	CARBON RESISTOR	100K 5% 1/6W	
R 18	QRD161J-102	CARBON RESISTOR	1.0K 5% 1/6W	
R 20	QRD161J-102	CARBON RESISTOR	1.0K 5% 1/6W	
R 24	QRD161J-331	CARBON RESISTOR	330 5% 1/6W	
R 25	QRD161J-334	CARBON RESISTOR	330K 5% 1/6W	
R 26	QRD161J-100	CARBON RESISTOR	=BC7	
R 27	QRD161J-331	CARBON RESISTOR	330 5% 1/6W	
R 28	QRD161J-271	CARBON RESISTOR	270 5% 1/6W	
R 29	QRD161J-103	CARBON RESISTOR	10K 5% 1/6W	
R 30	QRD161J-103	CARBON RESISTOR	10K 5% 1/6W	
R 31	QRD161J-393	CARBON RESISTOR	39K 5% 1/6W	

■ CD Amplifier Board Block No. 0 2

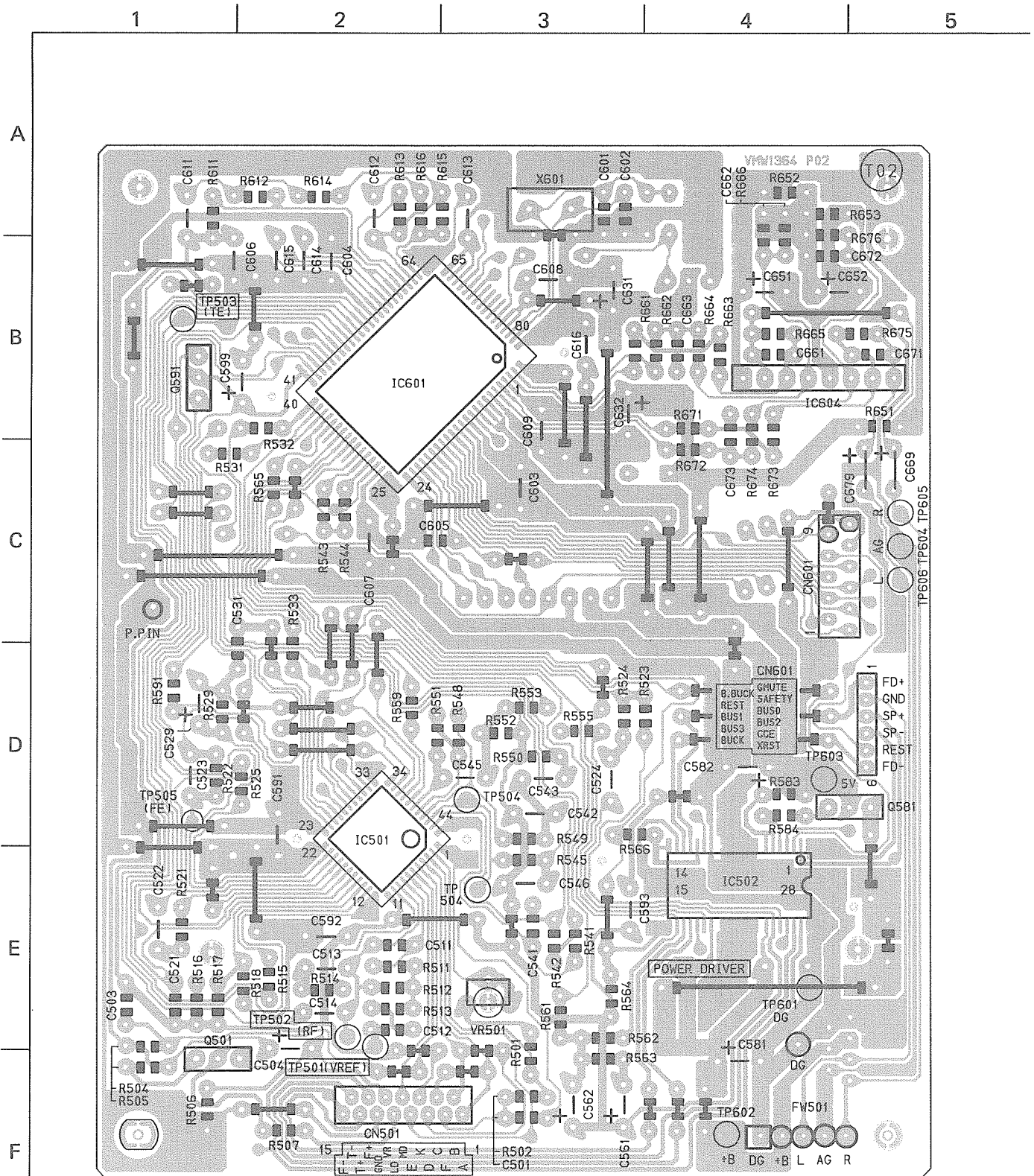


Fig. 13

Note
VMW1364 P02/T02

● CD Amplifier Board Parts List

BLOCK NO. 02		BLOCK NO. 02		BLOCK NO. 02		BLOCK NO. 02			
REF.	PARTS NO.	PARTS NAME	REMARKS	SUFFIX	REF.	PARTS NO.	PARTS NAME	REMARKS	SUFFIX
CN601	VMC0163-009	CONNECTOR	TO CPU		R 512	QRD161J-392	CARBON RESISTOR	3.9K 5% 1/6W	
IC501	TA8191F	IC	POWER DRIVER		R 513	QRD161J-332	CARBON RESISTOR	3.3K 5% 1/6W	
IC502	BA6288FP	IC	L.P.F		R 514	QRD161J-472	CARBON RESISTOR	4.7K 5% 1/6W	
IC601	TC9284BF	IC	5V REGURETOR		R 515	QRD161J-103	CARBON RESISTOR	10K 5% 1/6W	
IC604	BA15218N	IC	120K 5% 1/6W		R 516	QRD161J-103	CARBON RESISTOR	10K 5% 1/6W	
Q 581	2SA952(L,K)	TRANSISTOR	10K 5% 1/6W		R 517	QRD161J-202	CARBON RESISTOR	2.0K 5% 1/6W	
Q 582	2SA952(L,K)	TRANSISTOR	2.0K 5% 1/6W		R 518	QRD161J-355YT	CARBON RESISTOR	3.5K 5% 1/6W	
Q 591	2SA1309(RS)	TRANSISTOR	100 5% 1/6W		R 521	QRD161J-154	CARBON RESISTOR	150K 5% 1/6W	
R 501	QRD161J-124	CARBON RESISTOR	10K 5% 1/6W		R 522	QRD161J-392	CARBON RESISTOR	3.9K 5% 1/6W	
R 502	QRD161J-103	CARBON RESISTOR	10K 5% 1/6W		R 523	QRD161J-472	CARBON RESISTOR	4.7K 5% 1/6W	
R 504	QRD161J-202	CARBON RESISTOR	2.0K 5% 1/6W		R 524	QRD161J-351	CARBON RESISTOR	350 5% 1/6W	
R 505	QRD161J-100	CARBON RESISTOR	10 5% 1/6W		R 525	QRD161J-472	CARBON RESISTOR	4.7K 5% 1/6W	
R 506	QRD161J-101	CARBON RESISTOR	100 5% 1/6W		R 529	QRD161J-562	CARBON RESISTOR	5.6K 5% 1/6W	
R 507	QRD161J-120	CARBON RESISTOR	12 5% 1/6W		R 531	QRD161J-473	CARBON RESISTOR	47K 5% 1/6W	
R 511	QRD161J-183	CARBON RESISTOR	18K 5% 1/6W		R 532	QRD161J-104	CARBON RESISTOR	100K 5% 1/6W	
R 512	QRD161J-392	CARBON RESISTOR	3.9K 5% 1/6W		R 533	QRD161J-153	CARBON RESISTOR	15K 5% 1/6W	
R 513	QRD161J-332	CARBON RESISTOR	3.3K 5% 1/6W		R 541	QRD161J-123	CARBON RESISTOR	12K 5% 1/6W	
R 514	QRD161J-472	CARBON RESISTOR	4.7K 5% 1/6W		R 542	QRD161J-332	CARBON RESISTOR	3.3K 5% 1/6W	
R 515	QRD161J-103	CARBON RESISTOR	10K 5% 1/6W		R 543	QRD161J-473	CARBON RESISTOR	47K 5% 1/6W	
R 516	QRD161J-103	CARBON RESISTOR	10K 5% 1/6W		R 544	QRD161J-223	CARBON RESISTOR	22K 5% 1/6W	
R 517	QRD161J-202	CARBON RESISTOR	2.0K 5% 1/6W		R 545	QRD161J-103	CARBON RESISTOR	10K 5% 1/6W	
R 518	QRD161J-355YT	CARBON RESISTOR	3.5K 5% 1/6W		R 548	QRD161J-153	CARBON RESISTOR	15K 5% 1/6W	
R 521	QRD161J-154	CARBON RESISTOR	150K 5% 1/6W		R 549	QRD161J-821	CARBON RESISTOR	820 5% 1/6W	
R 522	QRD161J-392	CARBON RESISTOR	3.9K 5% 1/6W		R 550	QRD161J-104	CARBON RESISTOR	100K 5% 1/6W	
R 523	QRD161J-472	CARBON RESISTOR	4.7K 5% 1/6W		R 551	QRD161J-223	CARBON RESISTOR	22K 5% 1/6W	
R 524	QRD161J-351	CARBON RESISTOR	350 5% 1/6W		R 552	QRD161J-562	CARBON RESISTOR	5.6K 5% 1/6W	
R 525	QRD161J-472	CARBON RESISTOR	4.7K 5% 1/6W		R 553	QRD161J-821	CARBON RESISTOR	820 5% 1/6W	
R 529	QRD161J-562	CARBON RESISTOR	5.6K 5% 1/6W		R 555	QRD161J-392	CARBON RESISTOR	3.9K 5% 1/6W	
R 531	QRD161J-473	CARBON RESISTOR	47K 5% 1/6W		R 559	QRD161J-125	CARBON RESISTOR	1.2M 5% 1/6W	
R 532	QRD161J-104	CARBON RESISTOR	100K 5% 1/6W		R 561	QRD161J-562	CARBON RESISTOR	5.6K 5% 1/6W	
R 533	QRD161J-153	CARBON RESISTOR	15K 5% 1/6W		R 562	QRD161J-102	CARBON RESISTOR	1.0K 5% 1/6W	
R 541	QRD161J-123	CARBON RESISTOR	12K 5% 1/6W		R 563	QRD161J-152	CARBON RESISTOR	1.5K 5% 1/6W	
R 542	QRD161J-332	CARBON RESISTOR	3.3K 5% 1/6W		R 565	QRD161J-332	CARBON RESISTOR	3.3K 5% 1/6W	
R 543	QRD161J-473	CARBON RESISTOR	47K 5% 1/6W		R 566	QRD161J-883	CARBON RESISTOR	68K 5% 1/6W	
R 544	QRD161J-223	CARBON RESISTOR	22K 5% 1/6W		R 566	QRD161J-273	CARBON RESISTOR	27K 5% 1/6W	
R 545	QRD161J-103	CARBON RESISTOR	10K 5% 1/6W		R 583	QRD161J-101	CARBON RESISTOR	100 5% 1/6W	
R 548	QRD161J-153	CARBON RESISTOR	15K 5% 1/6W		R 584	QRD161J-331	CARBON RESISTOR	330 5% 1/6W	
R 549	QRD161J-821	CARBON RESISTOR	820 5% 1/6W		R 591	QRD161J-473	CARBON RESISTOR	47K 5% 1/6W	
R 550	QRD161J-104	CARBON RESISTOR	100K 5% 1/6W		R 611	QRD161J-102	CARBON RESISTOR	1.0K 5% 1/6W	
R 551	QRD161J-223	CARBON RESISTOR	22K 5% 1/6W		R 612	QRD161J-103	CARBON RESISTOR	10K 5% 1/6W	
R 552	QRD161J-562	CARBON RESISTOR	5.6K 5% 1/6W						

BLOCK NO. 02		BLOCK NO. 02		BLOCK NO. 02		BLOCK NO. 02			
REF.	PARTS NO.	PARTS NAME	REMARKS	SUFFIX	REF.	PARTS NO.	PARTS NAME	REMARKS	SUFFIX
C 501	QCBB1HK-821Y	C-CAPACITOR	820PF 10% 50V		C 501	QCBB1HK-821Y	C-CAPACITOR	820PF 10% 50V	
C 503	QCVB1CM-103Y	C-CAPACITOR	.010MF 20% 16V		C 503	QCVB1CM-103Y	C-CAPACITOR	.010MF 20% 16V	
C 511	QET41CM-106	E-CAPACITOR	10MF 20% 16V		C 511	QET41CM-106	E-CAPACITOR	10MF 20% 16V	
C 504	QCSB1HJ-3R9	C-CAPACITOR	3.9PF 10% 50V		C 504	QCSB1HJ-3R9	C-CAPACITOR	3.9PF 10% 50V	
C 512	QCS11HJ-270	C-CAPACITOR	27PF 5% 50V		C 512	QCS11HJ-270	C-CAPACITOR	27PF 5% 50V	
C 513	QFLC1HJ-104ZM	M-CAPACITOR	.10MF 5% 50V		C 513	QFLC1HJ-104ZM	M-CAPACITOR	.10MF 5% 50V	
C 514	QFN41HJ-472	M-CAPACITOR	4.700PF 5% 50V		C 514	QFN41HJ-472	M-CAPACITOR	4.700PF 5% 50V	
C 521	QCBB1HK-331Y	C-CAPACITOR	330PF 10% 50V		C 521	QCBB1HK-331Y	C-CAPACITOR	330PF 10% 50V	
C 522	QFLC1HJ-473ZM	M-CAPACITOR	.047MF 5% 50V		C 522	QFLC1HJ-473ZM	M-CAPACITOR	.047MF 5% 50V	
C 523	QFV81HJ-154	FILM CAPACITOR	.15MF 5% 50V		C 523	QFV81HJ-154	FILM CAPACITOR	.15MF 5% 50V	
C 524	QPEC1EM-475ZM	NP-E-CAPACITOR	4.7MF 20% 25V		C 524	QPEC1EM-475ZM	NP-E-CAPACITOR	4.7MF 20% 25V	
C 529	QETC1AM-336ZM	E-CAPACITOR	33MF 20% 10V		C 529	QETC1AM-336ZM	E-CAPACITOR	33MF 20% 10V	
C 531	QCVB1CM-822Y	C-CAPACITOR	8200PF 20% 16V		C 531	QCVB1CM-822Y	C-CAPACITOR	8200PF 20% 16V	
C 541	QCBB1HK-101Y	C-CAPACITOR	100PF 10% 50V		C 541	QCBB1HK-101Y	C-CAPACITOR	100PF 10% 50V	
C 542	QFLC1HJ-103ZM	M-CAPACITOR	.010MF 5% 50V		C 542	QFLC1HJ-103ZM	M-CAPACITOR	.010MF 5% 50V	
C 543	QFLC1HJ-393ZM	M-CAPACITOR	.039MF 5% 50V		C 543	QFLC1HJ-393ZM	M-CAPACITOR	.039MF 5% 50V	
C 545	QEN61HM-105Z	NP-E-CAPACITOR	1.0MF 20% 50V		C 545	QEN61HM-105Z	NP-E-CAPACITOR	1.0MF 20% 50V	
C 546	QFLC1HJ-283ZM	M-CAPACITOR	.022MF 5% 50V		C 546	QFLC1HJ-283ZM	M-CAPACITOR	.022MF 5% 50V	
C 561	QET41AM-476	E-CAPACITOR	4.7MF 20% 10V		C 561	QET41AM-476	E-CAPACITOR	4.7MF 20% 10V	
C 562	QET41HM-475	E-CAPACITOR	4.7MF 20% 50V		C 562	QET41HM-475	E-CAPACITOR	4.7MF 20% 50V	
C 581	QET41AM-477	E-CAPACITOR	4.70MF 20% 10V		C 581	QET41AM-477	E-CAPACITOR	4.70MF 20% 10V	
C 582	QEK41CM-476	E-CAPACITOR	4.7MF 20% 16V		C 582	QEK41CM-476	E-CAPACITOR	4.7MF 20% 16V	
C 591	VCPO012-105Z	C-CAPACITOR			C 591	VCPO012-105Z	C-CAPACITOR		
C 592	VCPO012-105Z	C-CAPACITOR			C 592	VCPO012-105Z	C-CAPACITOR		
C 593	QC011EM-104V	C-CAPACITOR			C 593	QC011EM-104V	C-CAPACITOR		
C 599	QEK61AM-107ZM	E-CAPACITOR	.10MF 20% 25V		C 599	QEK61AM-107ZM	E-CAPACITOR	.10MF 20% 25V	
C 601	QCS11HJ-220	C-CAPACITOR	100MF 20% 10V		C 601	QCS11HJ-220	C-CAPACITOR	100MF 20% 10V	
C 602	QCS11HJ-220	C-CAPACITOR	FOR CRYSTAL		C 602	QCS11HJ-220	C-CAPACITOR	FOR CRYSTAL	
C 603	QFV41HJ-104ZM	FILM CAPACITOR	.10MF 5% 50V		C 603	QFV41HJ-104ZM	FILM CAPACITOR	.10MF 5% 50V	
C 604	QC011EM-104V	C-CAPACITOR	.10MF 20% 25V		C 604	QC011EM-104V	C-CAPACITOR	.10MF 20% 25V	
C 605	QC011EM-104V	C-CAPACITOR	.10MF 5% 50V		C 605	QC011EM-104V	C-CAPACITOR	.10MF 5% 50V	
C 606	QC011EM-103Y	C-CAPACITOR	.010MF 20% 16V		C 606	QC011EM-103Y	C-CAPACITOR	.010MF 20% 16V	
C 607	QFV41HJ-104ZM	FILM CAPACITOR	.047MF 20% 25V		C 607	QFV41HJ-104ZM	FILM CAPACITOR	.047MF 20% 25V	
C 608	QC011EM-473V	C-CAPACITOR	.047MF 5% 50V		C 608	QC011EM-473V	C-CAPACITOR	.047MF 5% 50V	
C 609	QFV41HJ-104ZM	FILM CAPACITOR	.10MF 5% 50V		C 609	QFV41HJ-104ZM	FILM CAPACITOR	.10MF 5% 50V	
C 611	QCS11HJ-101	C-CAPACITOR	100PF 5% 50V		C 611	QCS11HJ-101	C-CAPACITOR	100PF 5% 50V	
C 612	QFLC1HJ-103ZM	M-CAPACITOR	.010MF 5% 50V		C 612	QFLC1HJ-103ZM	M-CAPACITOR	.010MF 5% 50V	
C 613	QFLC1HJ-103ZM	M-CAPACITOR	.010MF 5% 50V		C 613	QFLC1HJ-103ZM	M-CAPACITOR	.010MF 5% 50V	
C 614	QFN41HJ-332	M-CAPACITOR	3300PF 5% 50V		C 614	QFN41HJ-332	M-CAPACITOR	3300PF 5% 50V	
C 615	QFN41HJ-332	M-CAPACITOR	3300PF 5% 50V		C 615	QFN41HJ-332	M-CAPACITOR	3300PF 5% 50V	
C 616	QC011EM-103V	E-CAPACITOR	FOR EMC		C 616	QC011EM-103V	E-CAPACITOR	FOR EMC	
C 631	QEK61AM-107ZM	E-CAPACITOR	100MF 20% 10V		C 631	QEK61AM-107ZM	E-CAPACITOR	100MF 20% 10V	
C 632	QER40JM-107	E-CAPACITOR	100MF 20% 6.3V		C 632	QER40JM-107	E-CAPACITOR	100MF 20% 6.3V	
C 651	QEK61AM-107ZM	E-CAPACITOR	100MF 20% 10V		C 651	QEK61AM-107ZM	E-CAPACITOR	100MF 20% 10V	
C 652	QEK41CM-226	E-CAPACITOR	22MF 20% 16V		C 652	QEK41CM-226	E-CAPACITOR	22MF 20% 16V	
C 661	QCBB1HK-101Y	C-CAPACITOR	100PF 10% 50V		C 661	QCBB1HK-101Y	C-CAPACITOR	100PF 10% 50V	
C 662	QCBB1HK-101Y	C-CAPACITOR	100PF 10% 50V		C 662	QCBB1HK-101Y	C-CAPACITOR	100PF 10% 50V	
C 663	QCS11HJ-270	C-CAPACITOR	27PF 5% 50V		C 663	QCS11HJ-270	C-CAPACITOR	27PF 5% 50V	
C 669	QEK61HM-335ZM	E-CAPACITOR	3.3MF 20% 50V		C 669	QEK61HM-335ZM	E-CAPACITOR	3.3MF 20% 50V	
C 671	QCBB1HK-101Y	C-CAPACITOR	100PF 10% 50V		C 671	QCBB1HK-101Y	C-CAPACITOR	100PF 10% 50V	
C 672	QCBB1HK-101Y	C-CAPACITOR	100PF 10% 50V		C 672	QCBB1HK-101Y	C-CAPACITOR	100PF 10% 50V	
C 673	QCS11HJ-270	C-CAPACITOR	27PF 5% 50V		C 673	QCS11HJ-270	C-CAPACITOR	27PF 5% 50V	
CN501	EMV7144-015R	15PIN CONNECTOR	TO PICK UP		CN501	EMV7144-015R	15PIN CONNECTOR	TO PICK UP	
CN502	VMC0075-006N	CONNECTOR			CN502	VMC0075-006N	CONNECTOR		

● CD Changer Microprocessor Board Parts List

BLOCK NO. 05		BLOCK NO. 05		BLOCK NO. 05	
REF.	PARTS NO.	PARTS NAME	REMARKS	SUFFIX	
R 842	GRD161J-102	CARBON RESISTOR	1.0K 5% 1/6W		
R 845	GRD167J-332	CARBON RESISTOR	3.3K 5% 1/6W		
R 846	GRD161J-105	CARBON RESISTOR	1.0M 5% 1/6W		
R 850	GRD161J-822	CARBON RESISTOR	8.2K 5% 1/6W		
RM801	GRD161J-103	CARBON RESISTOR	10K 5% 1/6W		
RM802	GRD161J-152	CARBON RESISTOR	1.5K 5% 1/6W		
RM803	GRD161J-151	CARBON RESISTOR	150 5% 1/6W		
RM804	GRD161J-473	CARBON RESISTOR	47K 5% 1/6W		
RM805	GRD161J-224	CARBON RESISTOR	220K 5% 1/6W		
RM806	GRD161J-224	CARBON RESISTOR	220K 5% 1/6W		
RM807	GRD161J-104	CARBON RESISTOR	100K 5% 1/6W		
RM812	GRD161J-473	CARBON RESISTOR	47K 5% 1/6W		

BLOCK NO. 05		BLOCK NO. 05		BLOCK NO. 05	
REF.	PARTS NO.	PARTS NAME	REMARKS	SUFFIX	
C 801	QEK61AM-1072M	E-CAPACITOR	100MF 20% 10V		
C 802	QEK41EM-475	E-CAPACITOR	4.7MF 20% 25V		
C 803	QFN41HJ-102	M-CAPACITOR	1000PF 5% 50V		
C 804	QCS11HJ-470	C-CAPACITOR	47PF 5% 50V		
C 805	QCVB1CM-103Y	C-CAPACITOR	.010MF 20% 16V		
C 806	QEK41CM-476	E-CAPACITOR	47MF 20% 16V		
C 807	QEK41CM-476	E-CAPACITOR	47MF 20% 16V		
C 811	QFN41HJ-102	M-CAPACITOR	1000PF 5% 50V		
C 815	QCB1HK-102Y	C-CAPACITOR	1000PF 10% 50V		
C 816	QCB1HK-102Y	C-CAPACITOR	1000PF 10% 50V		
C 817	QCVB1CM-103Y	C-CAPACITOR	.010MF 20% 16V		
C 818	QCFB1HZ-104Y	C-CAPACITOR	.10MF +80% -20%		
C 819	QCVB1CM-103Y	C-CAPACITOR	.010MF 20% 16V		
C 820	QEK41HM-225	E-CAPACITOR	2.2MF 20% 50V		
CN801	VMCO161-R12	CONNECTOR	TO U-COM		
CN802	VMCO163-R18	CONNECTOR	TO CD MECHA		
D 803	1SR35-100	SI DIODE			
D 806	1SS133	SI DIODE			
D 807	1SS133	SI DIODE			
D 808	1SS133	SI DIODE			
IC801	UPD656126C-088	IC			
IC802	TA8409S	IC			
IC803	TA8409S	IC			
L 801	VGP0018-100	INDUCTOR			
Q 805	2SC2001(L,K)	TRANSISTOR			
Q 806	DTA143ES	TRANSISTOR			
Q 807	2SC1740S(R,S)	TRANSISTOR			
Q 808	2SA1317	TRANSISTOR			
Q 810	2SA1317	TRANSISTOR			
Q 811	2SA1317	TRANSISTOR			
Q 812	2SA1317	TRANSISTOR			
Q 813	2SC1740S(R,S)	TRANSISTOR			
R 801	GRD161J-105	CARBON RESISTOR	1.0M 5% 1/6W		
R 805	GRD161J-471	CARBON RESISTOR	470 5% 1/6W		
R 806	GRD161J-471	CARBON RESISTOR	470 5% 1/6W		
R 807	GRD161J-471	CARBON RESISTOR	470 5% 1/6W		
R 808	GRD161J-102	CARBON RESISTOR	1.0K 5% 1/6W		
R 809	GRD161J-681	CARBON RESISTOR	680 5% 1/6W		
R 811	GRD161J-681	CARBON RESISTOR	680 5% 1/6W		
R 812	GRD161J-102	CARBON RESISTOR	1.0K 5% 1/6W		
R 813	GRD161J-102	CARBON RESISTOR	1.0K 5% 1/6W		
R 814	GRD161J-102	CARBON RESISTOR	1.0K 5% 1/6W		
R 815	GRD161J-102	CARBON RESISTOR	1.0K 5% 1/6W		
R 816	GRD161J-681	CARBON RESISTOR	680 5% 1/6W		
R 817	GRD161J-102	CARBON RESISTOR	1.0K 5% 1/6W		
R 823	GRD161J-223	CARBON RESISTOR	22K 5% 1/6W		
R 824	GRD161J-223	CARBON RESISTOR	22K 5% 1/6W		
R 825	GRD161J-471	CARBON RESISTOR	470 5% 1/6W		
R 826	GRD161J-181	CARBON RESISTOR	180 5% 1/6W		
R 827	GRZ0076-100X	FUSI RESISTOR	10 1/0W		
R 828	GRD161J-102	CARBON RESISTOR	1.0K 5% 1/6W		
R 833	GRD161J-102	CARBON RESISTOR	1.0K 5% 1/6W		
R 838	GRD161J-102	CARBON RESISTOR	1.0K 5% 1/6W		
R 839	GRD161J-102	CARBON RESISTOR	1.0K 5% 1/6W		
R 841	GRD161J-102	CARBON RESISTOR	1.0K 5% 1/6W		

■ Tuner Board (U Version)

Block No. 07

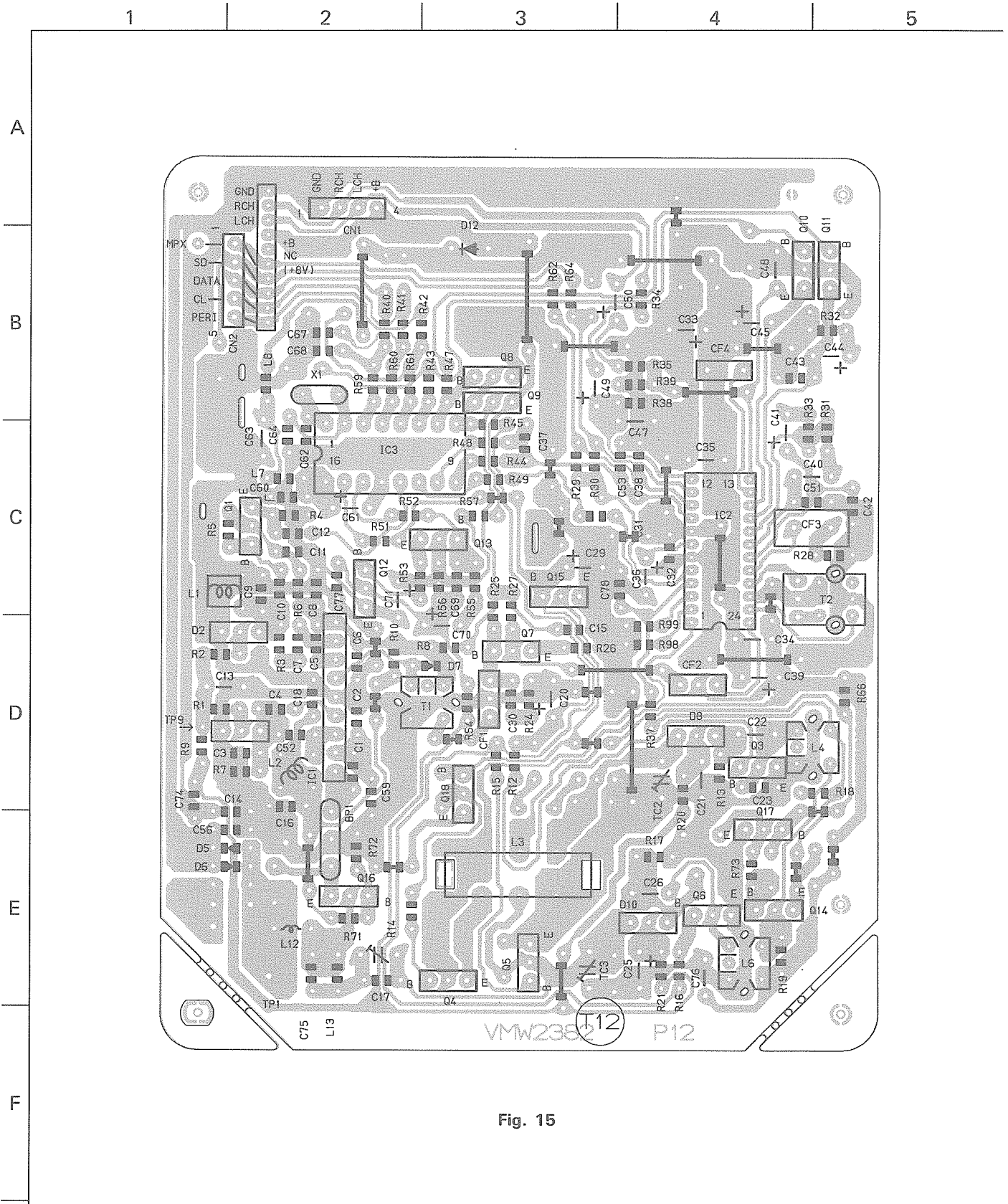


Fig. 15

Note
VMW2382 P12/T12

● Tuner Board Parts List (U Version)

BLOCK NO. 07

REF.	PARTS NO.	PARTS NAME	REMARKS	SUFFIX
C 64	QCS11HJ-270	C.CAPACITOR	27PF 5% 50V	
C 67	QCB1HK-101Y	C.CAPACITOR	100PF 10% 50V	
C 68	QCB1HK-151Y	C.CAPACITOR	150PF 10% 50V	
C 69	QCB1HK-222Y	C.CAPACITOR	2200PF 20% 16V	
C 70	QFV41HJ-224	FILM CAPACITOR	.22MF 5% 50V	
C 71	QETC1HM-335Z	E.CAPACITOR	3.3MF 20% 50V	
C 74	QCB1HK-151Y	C.CAPACITOR	150PF 10% 50V	
C 75	QCB1HK-6R8Y	C.CAPACITOR	SW	
C 76	QCC11EM-103V	C.CAPACITOR	SW	
C 77	QCB1HK-102Y	C.CAPACITOR	SW	
C 78	QCS11HJ-180	C.CAPACITOR	SW	
CF 1	VCF2L3B-108Z	CERAMIC FILTER		
CF 2	VCF2L3B-108Z	CERAMIC FILTER		
CF 3	VCF1Z2-115Z	CERAMIC FILTER		
CF 4	CSB456F29	CERA LOCK		
CN 1	VMC0238-004Z	CONNECTOR	TO MAIN	
CN 2	VMC0238-005Z	CONNECTOR	TO U-COM	
D 1	SVC203SPA-AB-AL	VARI CAP		
D 2	SVC203SPA-AB-AL	VARI CAP		
D 5	1SS133	SI DIODE		
D 6	1SS133	SI DIODE		
D 7	1SS133	SI DIODE		
D 8	SVC344-AA	VARI CAP		
D 10	SVC344-AA	VARI CAP		
D 12	DK10C-E	DIODE		
IC 1	TA7358P	IC		
IC 2	TA2057M	IC		
IC 3	TC9216P	IC		
L 1	VGF1B20-017	OSC COIL	FM OSC	
L 2	VQC1505-002	RF COIL	FM RF	
L 3	VGB009A-501	BAR ANTENA	MW/SW RF	
L 4	VQM7U02-404	OSC COIL(MW)	MW OSC	
L 6	VGS7U01-308	OSC COIL	SW OSC	
L 7	VGP0018-4R7	INDUCTOR		
L 8	VGP0018-221	INDUCTOR		
L 12	V03047-17	COIL	RF COIL	
L 13	V03047-21	ANTENNA COIL	SW	
Q 1	2SC1923	TRANSISTOR		
Q 3	2SC1923	TRANSISTOR		
Q 4	2SA1175	TRANSISTOR		
Q 5	2SC1923	TRANSISTOR		
Q 6	2SC1923	TRANSISTOR		
Q 7	2SC1923	TRANSISTOR		
Q 8	UN4214	TRANSISTOR		
Q 9	DTA114YS	TRANSISTOR		
Q 10	2SA1175	TRANSISTOR		
Q 11	2SA1175	TRANSISTOR		
Q 12	2SC2785	TRANSISTOR		
Q 13	2SC2785	TRANSISTOR		
Q 14	2SA1309A(RS)	TRANSISTOR		
Q 15	DTC124ES	TRANSISTOR	FM/SW ANT SW	
Q 16	2SC1923	TRANSISTOR	MW/SW SW.	
Q 17	DTC124ES	TRANSISTOR	MW/SW SW.	
Q 18	DTC124ES	TRANSISTOR	MW/SW SW.	
R 1	9RD161J-104	CARBON RESISTOR	100K 5% 1/6W	

BLOCK NO. 07

REF.	PARTS NO.	PARTS NAME	REMARKS	SUFFIX
BP 1	VBP4M3B-005	B-PASS FILTER	BPF	
C 1	QCS11HJ-200	C.CAPACITOR	20PF 5% 50V	
C 2	QCB1HK-102Y	C.CAPACITOR	1000PF 10% 50V	
C 3	QCS11HJ-100	C.CAPACITOR	8.2PF 10% 50V	
C 4	QCS11HJ-100	C.CAPACITOR	10PF 5% 50V	
C 5	QCS11HJ-100	C.CAPACITOR	.010MF 30% 16V	
C 6	QCVB1CN-103Y	C.CAPACITOR	20PF 5% 50V	
C 7	QCS11HJ-200	C.CAPACITOR	.010MF 30% 16V	
C 8	QCVB1CN-103Y	C.CAPACITOR	.010MF 30% 16V	
C 9	QCS11HJ-100	C.CAPACITOR	8.2PF 10% 50V	
C 10	QCS11HJ-200	C.CAPACITOR	2.2PF 10% 50V	
C 11	QCB1HK-102Y	C.CAPACITOR	.010MF 30% 16V	
C 12	QCB1HK-151Y	C.CAPACITOR	150PF 10% 50V	
C 13	QCC11EM-223V	C.CAPACITOR	.022MF 20% 25V	
C 14	QCB1HK-102Y	C.CAPACITOR	1000PF 10% 50V	
C 15	QCVB1CN-103Y	C.CAPACITOR	.010MF 30% 16V	
C 16	QCVB1CN-103Y	C.CAPACITOR	.010MF 30% 16V	
C 17	QCS11HJ-200	C.CAPACITOR	SW	
C 18	QCVB1CN-103Y	C.CAPACITOR	.010MF 30% 16V	
C 20	QET41AM-476	E.CAPACITOR	47MF 20% 10V	
C 21	QCC11EM-473V	C.CAPACITOR	.047MF 20% 25V	
C 22	QFP41HJ-451	PP-CAPACITOR	4.50PF 5% 50V	
C 23	QCT30CH-2R7Y	C.CAPACITOR	2.7PF 5% 50V	
C 25	QFLC1HJ-223ZM	M.CAPACITOR	.022MF 5% 50V	
C 26	QFN41HJ-472	M.CAPACITOR	4700PF 5% 50V	
C 29	QET41AM-476	E.CAPACITOR	47MF 20% 10V	
C 30	QCVB1CN-103Y	C.CAPACITOR	.010MF 30% 16V	
C 31	QCVB1CN-103Y	C.CAPACITOR	.010MF 30% 16V	
C 32	QCVB1CN-103Y	C.CAPACITOR	.010MF 30% 16V	
C 33	QET41AM-107	E.CAPACITOR	100PF 20% 10V	
C 34	QCC11EM-473V	C.CAPACITOR	.047MF 20% 25V	
C 35	QCC11EM-473V	C.CAPACITOR	.047MF 20% 25V	
C 36	QET41CN-106	E.CAPACITOR	≈R19	
C 37	QCVB1CN-103Y	C.CAPACITOR	.010MF 30% 16V	
C 38	QCB1HK-102Y	C.CAPACITOR	1000PF 10% 50V	
C 39	QET41CN-106	E.CAPACITOR	10MF 20% 16V	
C 40	QCC31EM-333ZV	C.CAPACITOR	.033MF 20% 25V	
C 41	QET41CN-106	E.CAPACITOR	10MF 20% 16V	
C 42	QCS11HJ-680	C.CAPACITOR	68PF 5% 50V	
C 43	QCVB1CN-103Y	C.CAPACITOR	.010MF 30% 16V	
C 44	QETC1HM-104Z	E.CAPACITOR	.10MF 20% 50V	
C 45	QET41HM-474	E.CAPACITOR	.47MF 20% 50V	
C 47	QCC11EM-103V	C.CAPACITOR	.010MF 20% 25V	
C 48	QCC11EM-103V	C.CAPACITOR	.010MF 20% 25V	
C 49	QET41HM-105	E.CAPACITOR	1.0MF 20% 50V	
C 50	QET41HM-105	E.CAPACITOR	1.0MF 20% 50V	
C 51	QCB1HK-331Y	C.CAPACITOR	330PF 10% 50V	
C 52	QCB1HK-102Y	C.CAPACITOR	1000PF 10% 50V	
C 53	QCS11HJ-150	C.CAPACITOR	15PF 5% 50V	
C 56	QCVB1CN-103Y	C.CAPACITOR	.010MF 30% 16V	
C 59	QCB1HK-102Y	C.CAPACITOR	1000PF 10% 50V	
C 60	QCB1HK-102Y	C.CAPACITOR	1000PF 10% 50V	
C 61	QET41AM-107	E.CAPACITOR	100MF 20% 10V	
C 62	QCT30CH-150Y	C.CAPACITOR	15PF 5% 50V	
C 63	QCC11EM-473V	C.CAPACITOR	.047MF 20% 25V	

BLOCK NO. 07

REF.	PARTS NO.	PARTS NAME	REMARKS	SUFFIX
R 71	QRD161J-223	CARBON RESISTOR SW		
R 72	QRD161J-223	CARBON RESISTOR SW		
R 73	QRD161J-103	CARBON RESISTOR SW		
R 98	QRD161J-103	CARBON RESISTOR 10K 5% 1/6W		
R 99	QRD161J-822	CARBON RESISTOR 8.2K 5% 1/6W		
T 1	VQT7F12-110	IFT		
T 2	VQT7A21-109	IFT		
TC	GAT3722-200ZM	T-CAPACITOR	MW RF	
TC	GAT3722-100M	T-CAPACITOR	SW RF	
TP	VMZ0015-002	POSTI PIN	TO ROD ANT	
X	V472124-A0	CRYSTAL		

BLOCK NO. 07

REF.	PARTS NO.	PARTS NAME	REMARKS	SUFFIX
R 2	QRD161J-473	CARBON RESISTOR 47K 5% 1/6W		
R 3	QRD167J-4R7	CARBON RESISTOR 4.7 5% 1/6W		
R 4	QRD161J-102	CARBON RESISTOR 1.0K 5% 1/6W		
R 5	QRD161J-823	CARBON RESISTOR 82K 5% 1/6W		
R 6	QRD161J-101	CARBON RESISTOR 100 5% 1/6W		
R 7	QRD161J-104	CARBON RESISTOR 100K 5% 1/6W		
R 8	QRD161J-101	CARBON RESISTOR 100 5% 1/6W		
R 9	QRD161J-102	CARBON RESISTOR 1.0K 5% 1/6W		
R 10	QRD161J-101	CARBON RESISTOR 100 5% 1/6W		
R 12	QRD161J-103	CARBON RESISTOR 10K 5% 1/6W		
K 13	QRD161J-104	CARBON RESISTOR 100K 5% 1/6W		
R 14	QRD161J-103	CARBON RESISTOR 10K 5% 1/6W		
R 15	QRD161J-103	CARBON RESISTOR 10K 5% 1/6W		
R 16	QRD161J-103	CARBON RESISTOR 10K 5% 1/6W		
R 17	QRD161J-104	CARBON RESISTOR 100K 5% 1/6W		
R 18	QRD161J-102	CARBON RESISTOR 1.0K 5% 1/6W		
R 20	QRD161J-102	CARBON RESISTOR 1.0K 5% 1/6W		
R 21	QRD161J-103	CARBON RESISTOR 10K 5% 1/6W		
R 24	QRD161J-331	CARBON RESISTOR 330 5% 1/6W		
R 25	QRD161J-334	CARBON RESISTOR 330K 5% 1/6W		
R 26	QRD161J-100	CARBON RESISTOR =BC7		
R 27	QRD161J-331	CARBON RESISTOR 330 5% 1/6W		
R 28	QRD161J-271	CARBON RESISTOR 270 5% 1/6W		
R 29	QRD161J-103	CARBON RESISTOR 10K 5% 1/6W		
R 30	QRD161J-103	CARBON RESISTOR 10K 5% 1/6W		
R 31	QRD161J-393	CARBON RESISTOR 39K 5% 1/6W		
R 32	QRD161J-223	CARBON RESISTOR 22K 5% 1/6W		
R 33	QRD161J-333	CARBON RESISTOR 33K 5% 1/6W		
R 34	QRD161J-222	CARBON RESISTOR 2.2K 5% 1/6W		
R 35	QRD161J-222	CARBON RESISTOR 2.2K 5% 1/6W		
R 37	QRD161J-560	CARBON RESISTOR 56 5% 1/6W		
R 38	QRD161J-392	CARBON RESISTOR 3.9K 5% 1/6W		
R 39	QRD161J-392	CARBON RESISTOR 3.9K 5% 1/6W		
R 40	QRD161J-222	CARBON RESISTOR 2.2K 5% 1/6W		
R 41	QRD161J-222	CARBON RESISTOR 2.2K 5% 1/6W		
R 42	QRD161J-222	CARBON RESISTOR 2.2K 5% 1/6W		
R 43	QRD161J-103	CARBON RESISTOR 10K 5% 1/6W		
R 44	QRD161J-183	CARBON RESISTOR 18K 5% 1/6W		
R 45	QRD161J-102	CARBON RESISTOR E/U		
R 47	QRD161J-103	CARBON RESISTOR 10K 5% 1/6W		
R 48	QRD161J-331	CARBON RESISTOR 330 5% 1/6W		
R 49	QRD161J-102	CARBON RESISTOR 1.0K 5% 1/6W		
R 51	QRD161J-102	CARBON RESISTOR E/U		
R 52	QRD161J-472	CARBON RESISTOR 4.7K 5% 1/6W		
R 53	QRD161J-471	CARBON RESISTOR 470 5% 1/6W		
R 54	QRD161J-222	CARBON RESISTOR 2.2K 5% 1/6W		
R 55	QRD161J-472	CARBON RESISTOR 4.7K 5% 1/6W		
R 56	QRD167J-332	CARBON RESISTOR 3.3K 5% 1/6W		
R 57	QRD161J-102	CARBON RESISTOR 1.0K 5% 1/6W		
R 59	QRD161J-222	CARBON RESISTOR 2.2K 5% 1/6W		
R 60	QRD161J-222	CARBON RESISTOR 2.2K 5% 1/6W		
R 61	QRD161J-222	CARBON RESISTOR 2.2K 5% 1/6W		
R 62	QRD161J-102	CARBON RESISTOR 1.0K 5% 1/6W		
R 64	QRD161J-102	CARBON RESISTOR 1.0K 5% 1/6W		
R 66	QRD161J-103	CARBON RESISTOR 10K 5% 1/6W		

● Enclosure Component Parts List

BLOCK NO.

△ REF.	PARTS NO.	PARTS NAME	REMARKS	QTY	SUFFIX	CLR
A	ZCPRXC50J-FB	FRONT CABINET		1		
	ZCPRXC50K-FB	FRONT CABINET		1		
B	ZCPRXC50K-CBA	CASSETTE HOLDER	DECK A	1		
C	ZCPRXC50K-CBB	CASSETTE HOLDER	DECK B	1		
D	PCXC50K-HANDLE	HANDLE		1		
1	VJG1287-001UL	FRONT PANEL		1	U	
	VJG1287-011UL	FRONT PANEL		1	C, J	
2	VJD3973-001	LCD PLATE		1		
3	VJD5451-004	CD LENS		1		
4	VXP5245-001	PUSH KNOB	POWER	1		
5	SBSF2608Z	SCREW		1		
6	VXP2088-001	PUSH KNOB	1-6.VOL.BAS/TRE	1		
7	SBSF2608Z	SCREW		3		
8	VXP3653-001	PUSH KNOB	TAPE.SPEED.OPEN	1		
9	SBSF2608Z	SCREW		1		
10	VXP3660-001	PUSH KNOB	PLAY/PAUSE	1		
11	VXP5247-001	PUSH KNOB	TUNER UP/DOWN	1		
12	SBSF2608Z	SCREW		1		
13	VJK4424-001	AHB LENS		1		
15	VJD3971-001	CONTROL PLATE		1		
16	VJT2341-001	CASSETTE DOOR(L)		1		
17	VJT2341-002	CASSETTE DOOR(R)		1		
18	VJT4214-001	DOOR LENS(L)		1		
19	VJT4214-002	DOOR LENS(R)		1		
20	VKY4180-001	CASSETTE SPRING		4		
21	VKW5127-002	DOOR SPRING		2		
22	VYH5601-001	GEAR		2		
23	-----	XC50 C.MECHA	PC-X130 MECHA	1		
24	182131301ZT	BUTTON FRAME		1		
25	182131307ZT	BUTTON FLAME		1		
26	99991402T	MINI SCREW		4		
27	VXP4940-00F	BUTTON ASS'Y	MECHA BOTTON	1		
28	VKL7725-001	MECHA BRACKET		1		
29	VKL7725-002	MECHA BRACKET		1		
30	SBST3006Z	SCREW	MECHA BKT+MECHA	4		
31	SBSF3010Z	SCREW	MECHA BKT+REAR	4		
32	QHX5080-001	WIRE CLAMP		6		
33	SBSF3010Z	SCREW	MECHA+REAR	1		
34	VJG1288-003	REAR CABINET		1	U	
	VJG1288-001UL	REAR CABINET		1	C, J	
38	VJC2016-023SS	BATTERY COVER		1		
39	VJA3036-00A	ROD ANT ASS'Y		1		
40	SDSP3020N	SCREW	ANT	1		
41	VYH6739-001	TERMINAL LUG		1		
42	VYH3830-001	AC HOLDER		1		
43	SBSF3010Z	SCREW	AC HOL+REAR CAB	2		
44	VYH7888-001	SHIELD	TRANS	1		
45	VYH5657-001	BATTERY SPRING	BATTERY	1		
46	E65923-003	TAPPING SCREW		1		
47	SBSF4020Z	SCREW	TRANS	2		
48	SBSF3050Z	SCREW	FRONT+REAR	5		
49	SSSF3010M	SCREW	FRONT+HANDLE	2		
50	SSSF3010M	SCREW	REAR+CHASSIS	2		
51	SBSF3010Z	SCREW	REAR+H.P PWB	1		
52	VYH3827-002	HEAT SINK		1		

BLOCK NO. M1MM

REF.	PARTS NO.	PARTS NAME	REMARKS	QTY	SUFFIX	CLR
53	DPSP3010Z	SCREW	IC	1		
54	SBSF3010Z	SCREW		3		
55	SBSF3010Z	SCREW	SP TARMINAL	2		
56	SBSF3010Z	SCREW	AC HOL+PWB	2		
57	VYH1244-001	CHASSIS		1		
58	SBSF3010Z	SCREW	CHASSIS+CD MECH	4		
59	VYH1245-002	SUB CHASSIS		1		
60	SBSF3010Z	SCREW	CHASSIS+S.CHASS	2		
62	VYSH110-024	SPACER	SUS CHASSIS+CD	1		
63	SBSF3010Z	SCREW	MICON PWB+S.CHA	7		
64	VYH7945-001	BOSS		1		
65	SBSF3016Z	SCREW	FOR BOSS	1		
66	VYSR101-025	SPACER		1		
67	SBSF3010Z	SCREW	REAR+CHASSIS	2		
68	SBSF3010Z	SCREW	CD PWB+CHASSIS	2		
69	SBSF3010Z	SCREW	CHANGER PWB+CHA	1		
70	VJD3972-001	TRAY FITTING		1		
78	PU59915-105	SPACER		3		
	VKS5503-001	GUIDE PIN		1		
79	-----	CHANGER MECHA		1		
80	VYSA1R6-049	SPACER		2		
81	VYH3828-001	LCD HOLDER		1		
82	VYH7889-002	SHEET		1		
83	VYH7892-001	LED HOLDER	POWER/STANDBY	1		
84	VYH7890-001	LED HOLDER	CHANGER/EXTRA	1		
85	VYH7894-002	LED HOLDER	AHB	1		
86	VYH3829-001	HOLDER	TUNER HOLDER	1		
87	VKZ4001-110	WIRE CLAMP		1		
88	SBSF3012Z	SCREW	HOLDER+REAR	2		
90	QHX5080-001	WIRE CLAMP		1		
92	VYN7065-M006T	NAME PLATE		1	J	
	VYN7065-M004T	NAME PLATE		1	C	
	VYN7065-M007T	NAME PLATE		1	U	
93	VND5008-001	FCC LABEL(4)		1	J	
94	VND5001-001	HHS LABEL	JEM -007	1	J	
95	VNC1200-094	CAUTION SHEET		1		
F 997	QMF0007-5R0J1	FUSE		1	U	
F 998	QMF0007-5R0J1	FUSE		1		
F 999	QMF51E2-R40SBS			1	U	
T 999	VTP57P2-12B	POWER TRANS.		1	C, J	
	VTP57P2-12H	POWER TRANSF		1	U	
101	VYH5483-101	SPRING	UM-1	1		
102	VYH6889-002	BATT.SPRING	UM-3	1		
103	VND4003-034	FUSE LABEL	FOR F999	1	U	
106	VMA4589-002	SHIELD CASE		1		
107	VMA4572-002	SHIELD		1		

JVC

VICTOR COMPANY OF JAPAN, LIMITED
AUDIO PRODUCTS DIVISION 10-1, 1-chome, Ohwatari-machi, Maebashi-city, Japan