

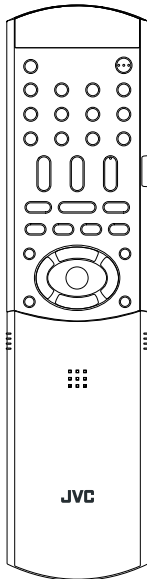
# JVC

# SCHEMATIC DIAGRAMS

## HOME CINEMA CONTROL CENTER

# RX-ES9SL

CD-ROM No.SML200312

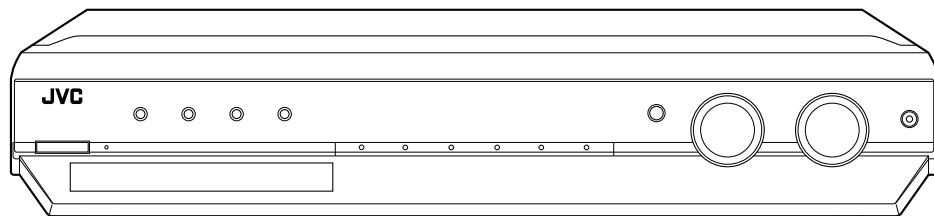


Area suffix	
B	U.K.
E	Continental Europe
EN	Northern Europe

DIGITAL  
**dts**  
SURROUND

DOLBY  
DIGITAL  
PRO LOGIC II

**R-D-S**



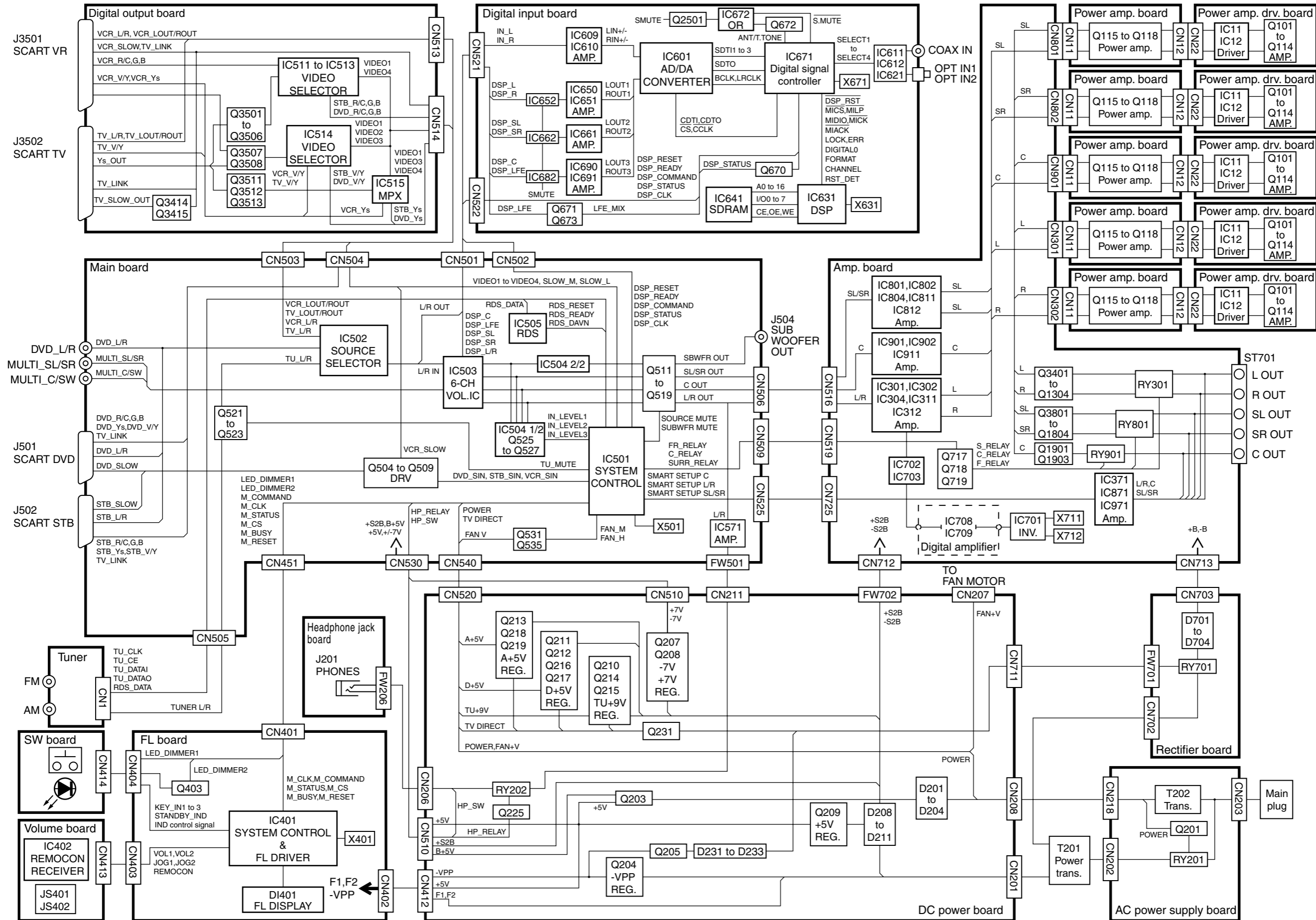
### Contents

Block diagram .....	2-1
Standard schematic diagrams .....	2-2
Printed circuit boards .....	2-10 to 15

In regard with component parts appearing on the silk-screen printed side (parts side) of the PWB diagrams, the parts that are printed over with black such as the resistor (■), diode (▣) and ICP (●) or identified by the "▲" mark nearby are critical for safety.

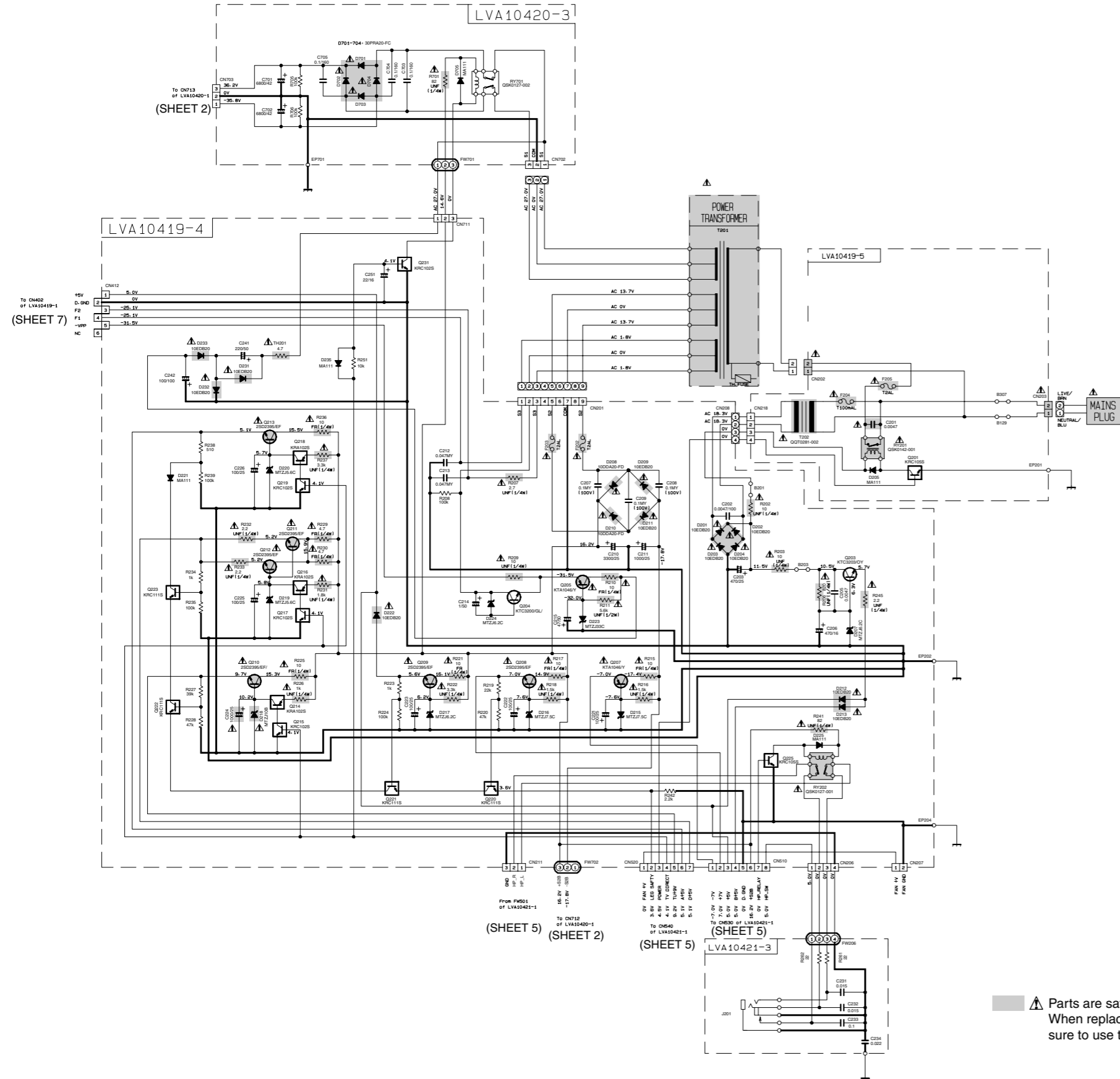
(This regulation does not correspond to J and C version.)

# Block diagram



# Standard schematic diagrams

## ■ Primary / Regulator section



VOLTAGE MEASUREMENT CONDITION

- POWER ON
- SOURCE FM(ND SIGNAL)
- SURROUND OFF
- VOLUME 0

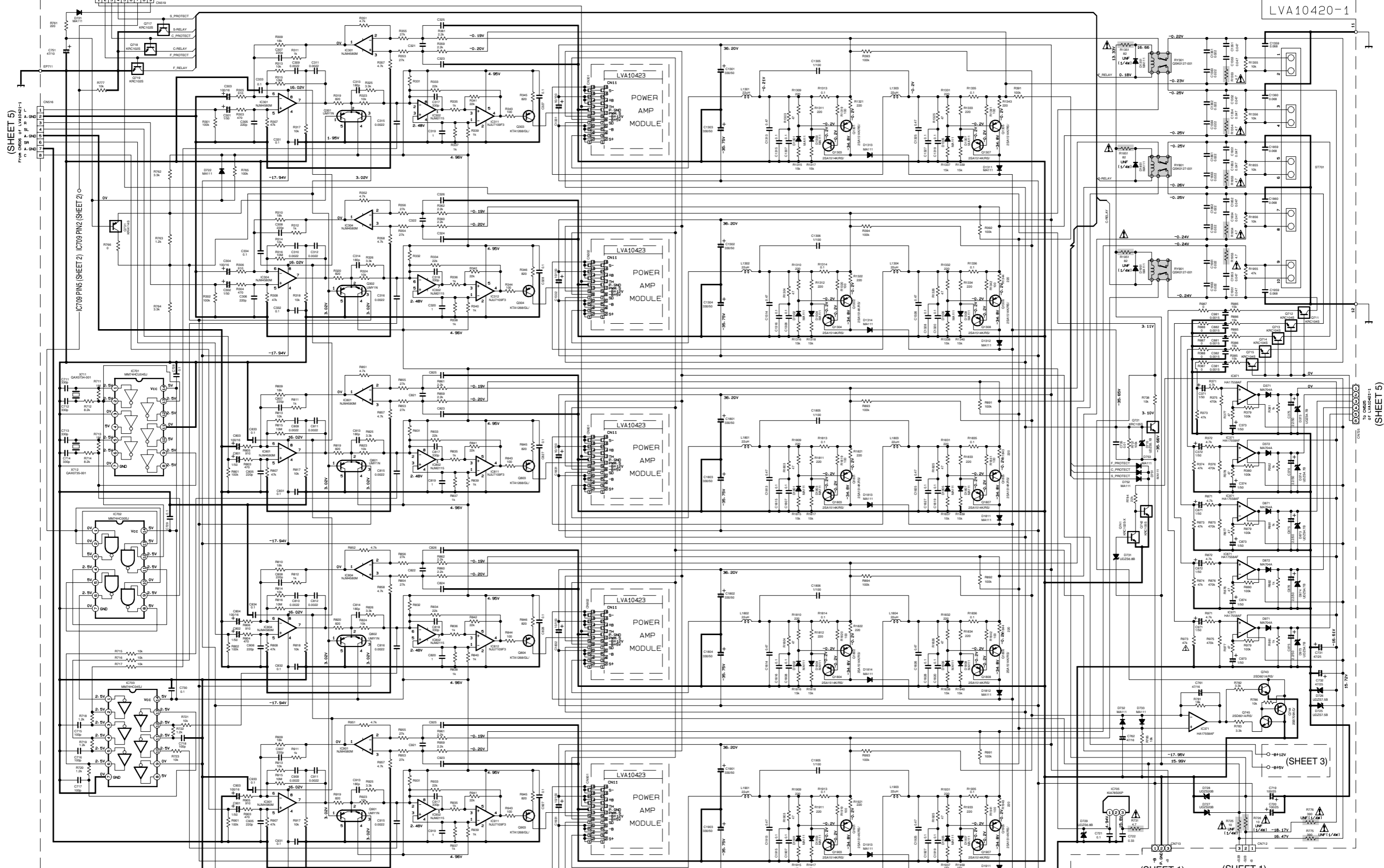
SHEET NUMBER	CIRCUIT DISCRIPTION
1/8	PRIMARY/REGULATOR
2/8	SPEAKER TERMINAL/PWM MODULATOR/LOW PASS FILTER
3/8	POWER SUPPLY(DIGITAL AMP)
4/8	DIGITAL AMP MODULE
5/8	AUDIO-VIDEO SIGNAL INPUT/SOUND IC/SYSTEM CONTROL LSI
6/8	AUDIO-VIDEO INPUT TERMINAL(SCART)
7/8	USER CONTROL KEYS/SYSTEMCONTROL LSI
8/8	SURROUND IC/DIGITAL SIGNAL INPUT TERMINAL/FL DISPLAY

▲ Parts are safety assurance parts. When replacing those parts make sure to use the specified one.

■ Speaker terminal / PWM modulator / Low pass filter section

(SHEET 5)  
From CN009 of LVA10421-1

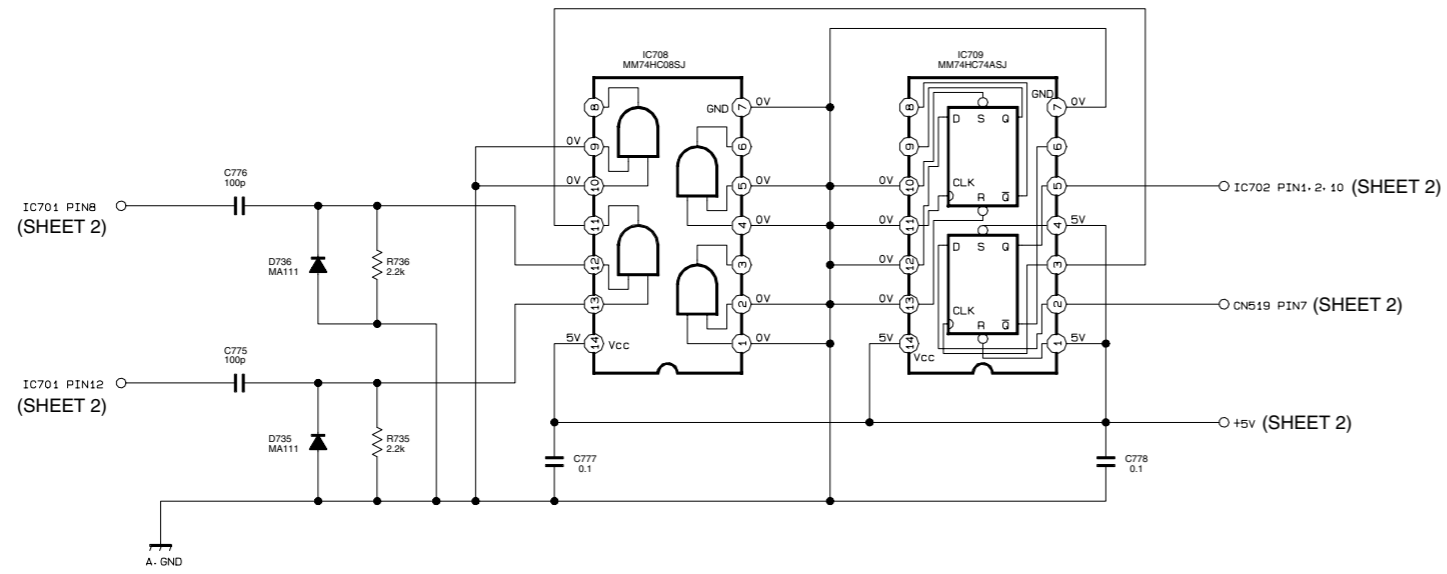
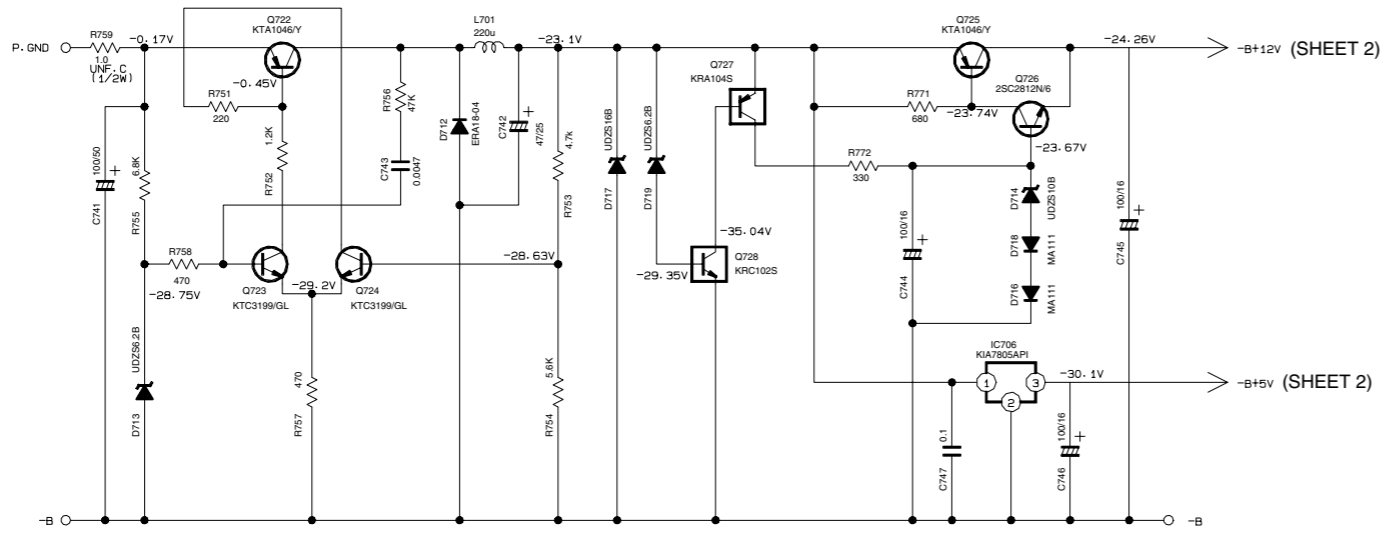
LVA10420-1



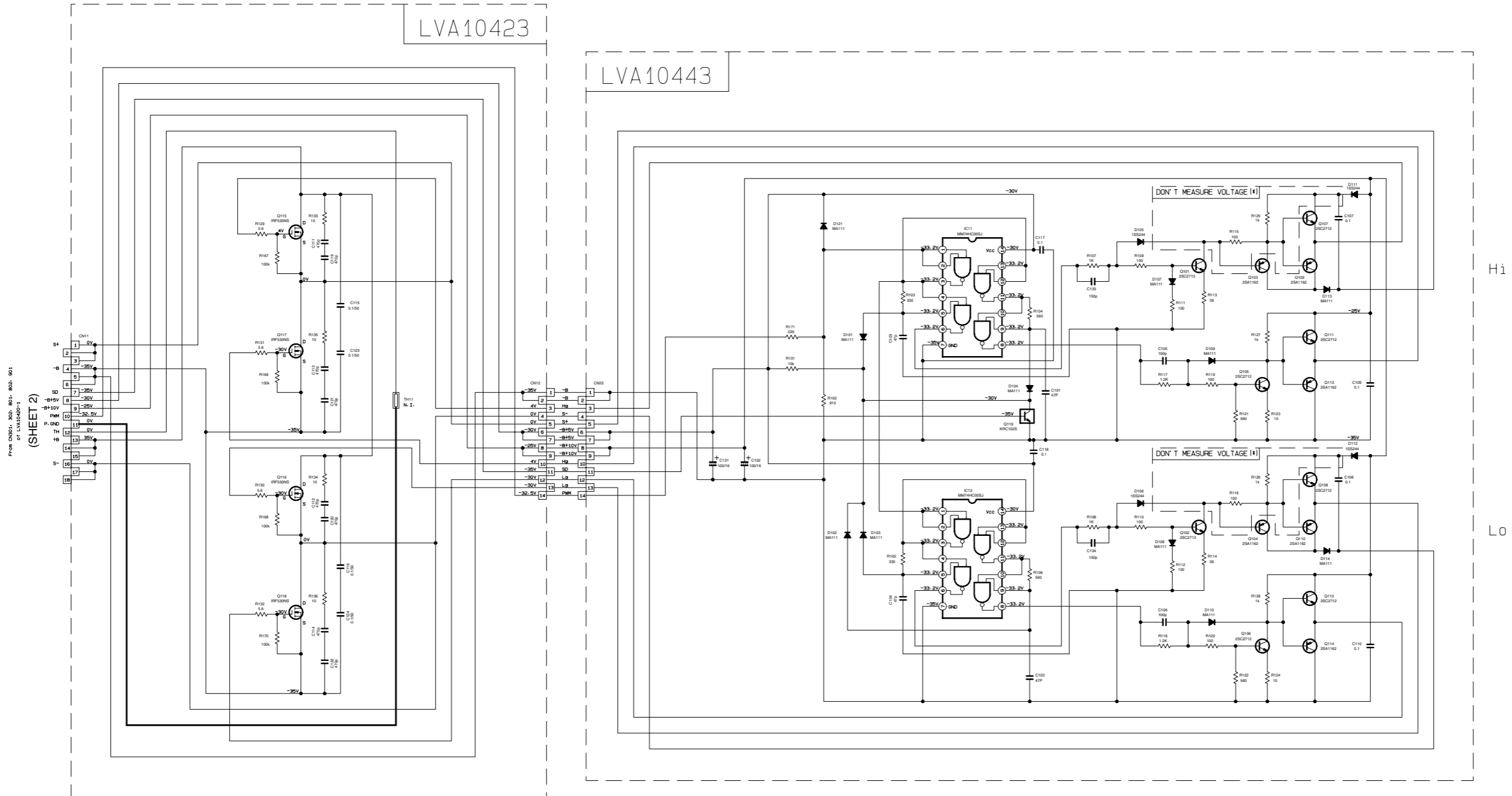
(SHEET 1) (SHEET 2) (SHEET 3)  
 ▲ Parts are safety assurance parts.  
 When replacing those parts make  
 sure to use the specified one.

Power supply (Digital amplifier) section

LVA10420-1

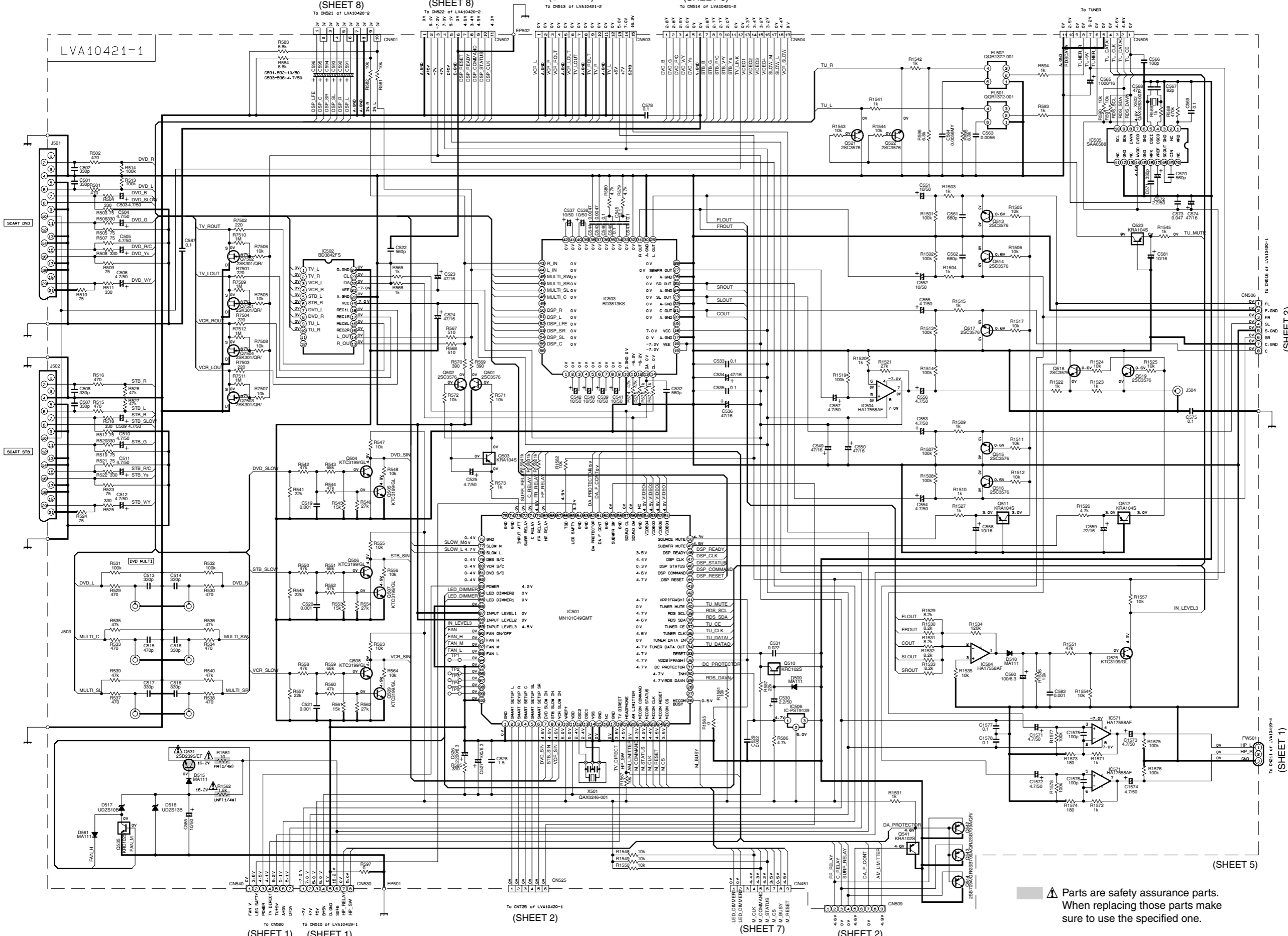


■ Digital amplifier module section



\*NOTE  
DON'T MEASURE VOLTAGE AT THIS AREA BECAUSE THE UNIT IS BROKEN.

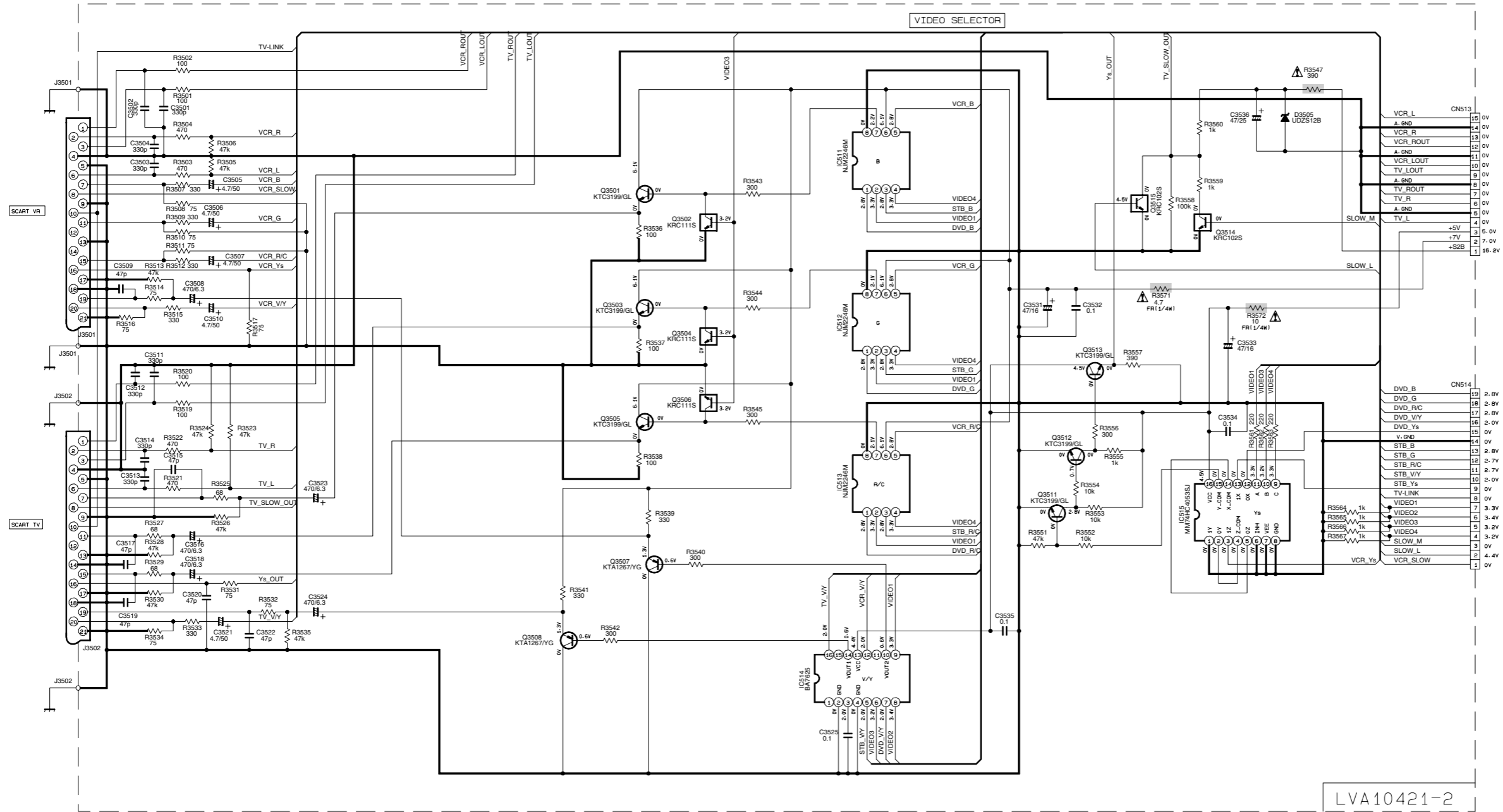
■ Audio, video signal input / Sound IC / System control LSI section



⚠ Parts are safety assurance parts. When replacing those parts make sure to use the specified one.



■ Audio, video input terminal (SCART) section



From CN503  
of LVA10421-1

(SHEET 5)

From CN504  
of LVA10421-1

(SHEET 5)

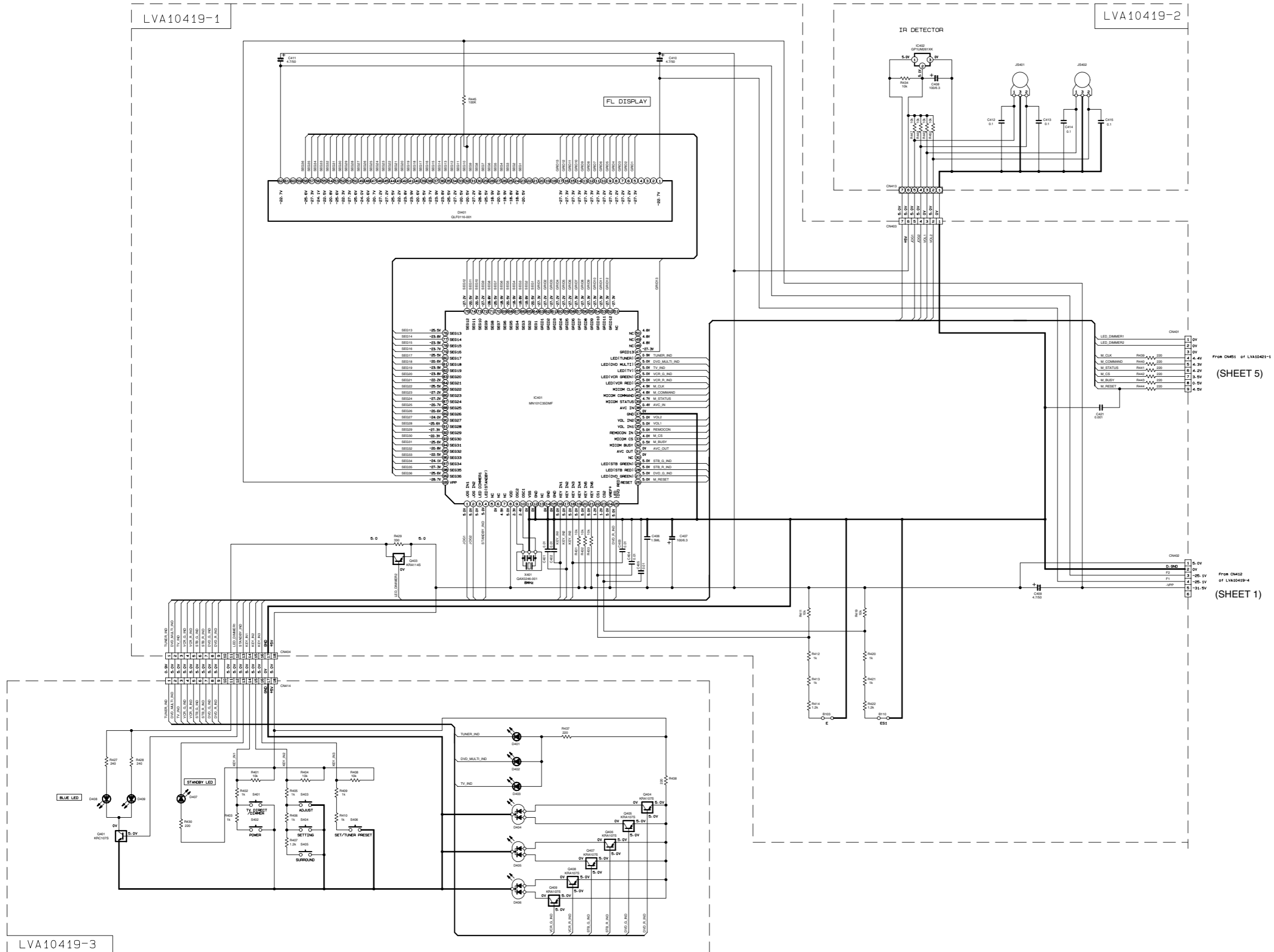
LVA10421-2

▲ Parts are safety assurance parts.  
When replacing those parts make  
sure to use the specified one.

CONTROL LOGIC

SOURCE	VIDEO1	VIDEO2	VIDEO3	VIDEO4
DVD MULTI	L	H	L	L
DVD	L	H	L	L
STB	H	H	L	L
VCR	H	L	L	H
TV	L	L	H	L
FM/AM	H	H	H	H

■ User control keys / System control LSI / FL display section

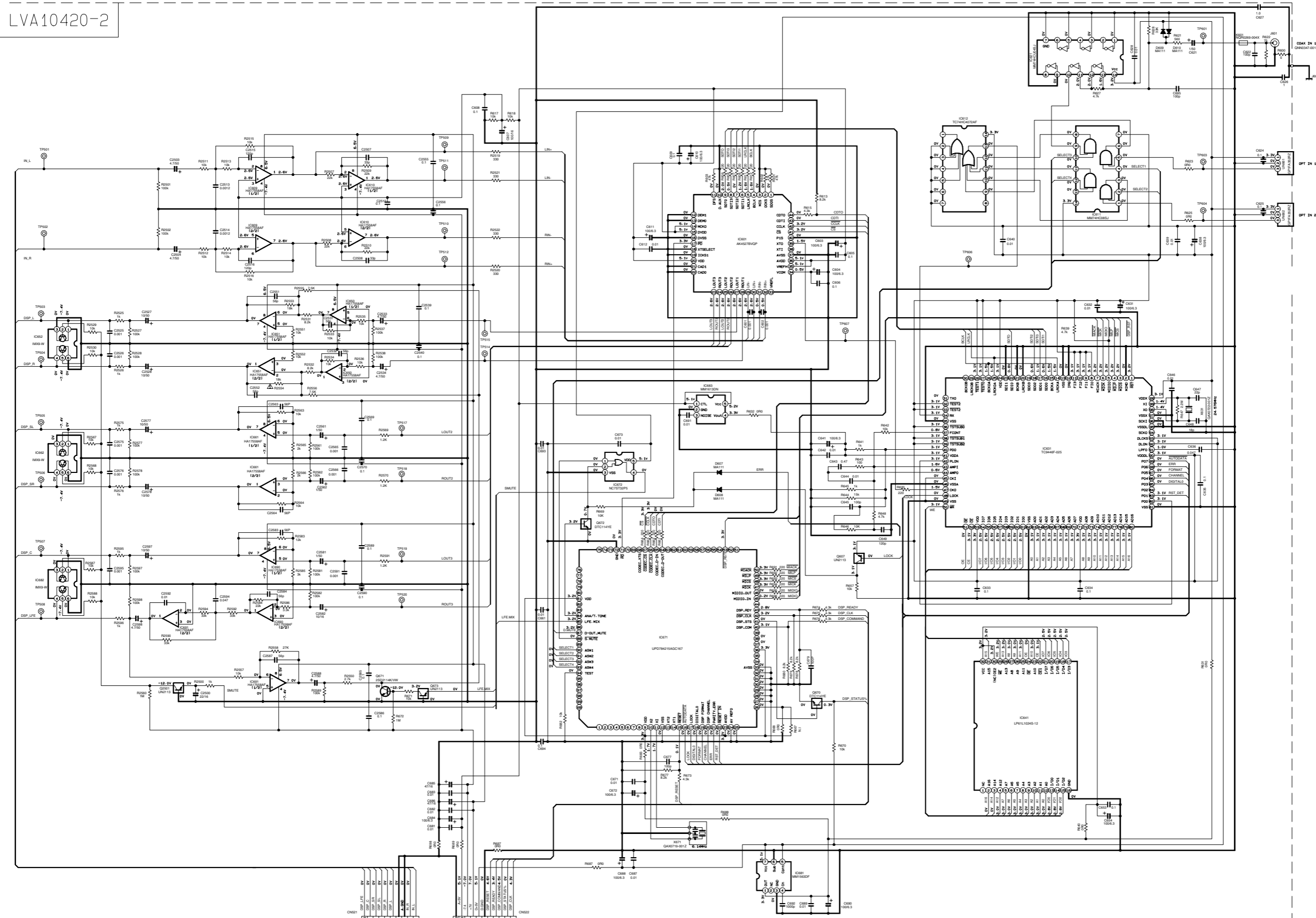


FROM CH41 OF LVA10419-1  
(SHEET 5)

FROM CH412 OF LVA10419-4  
(SHEET 1)

Surround IC / Digital signal input terminal section

LVA10420-2

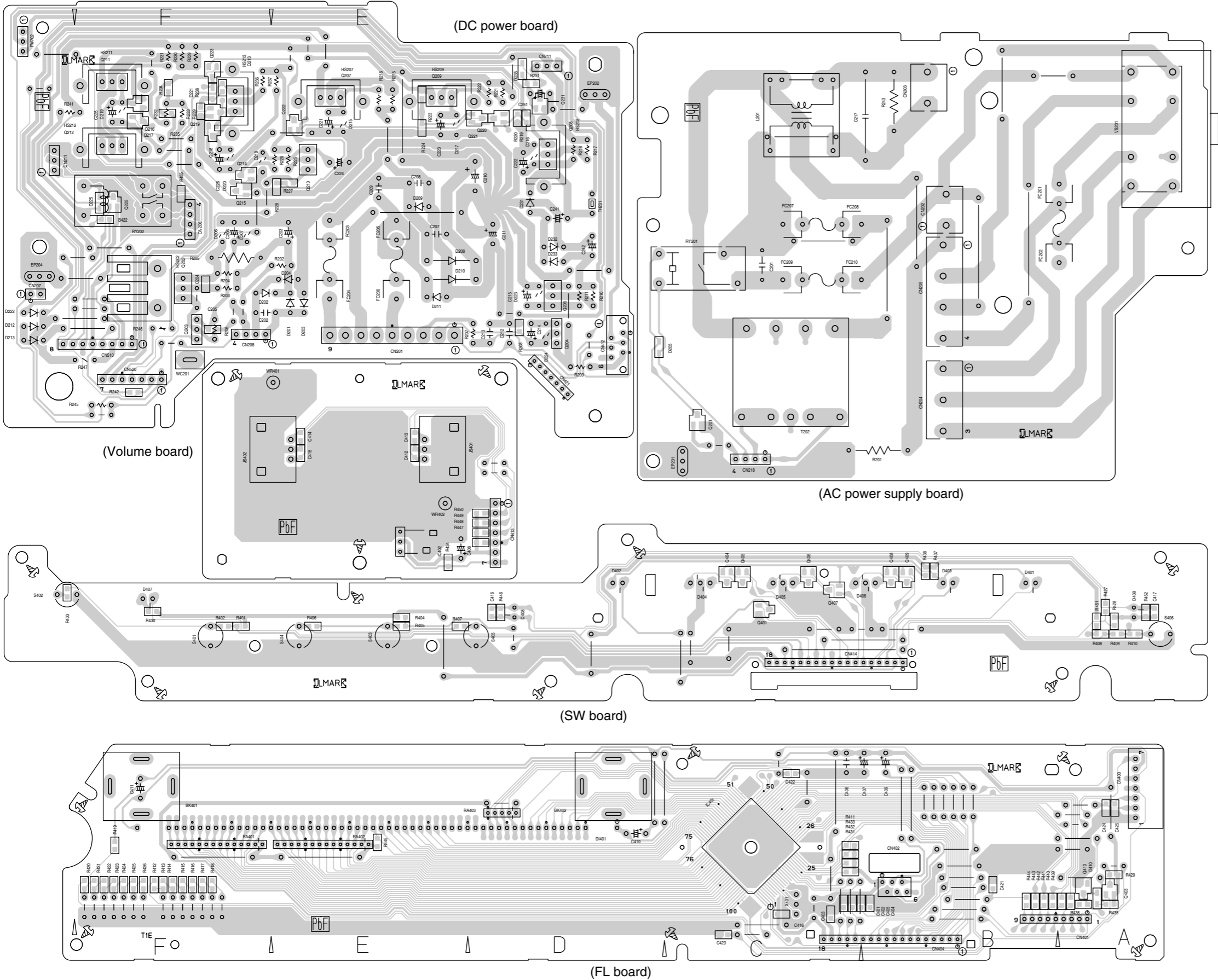


From 0262 of LVA10421-1  
(SHEET 5)

From 0262 of LVA10421-1  
(SHEET 5)

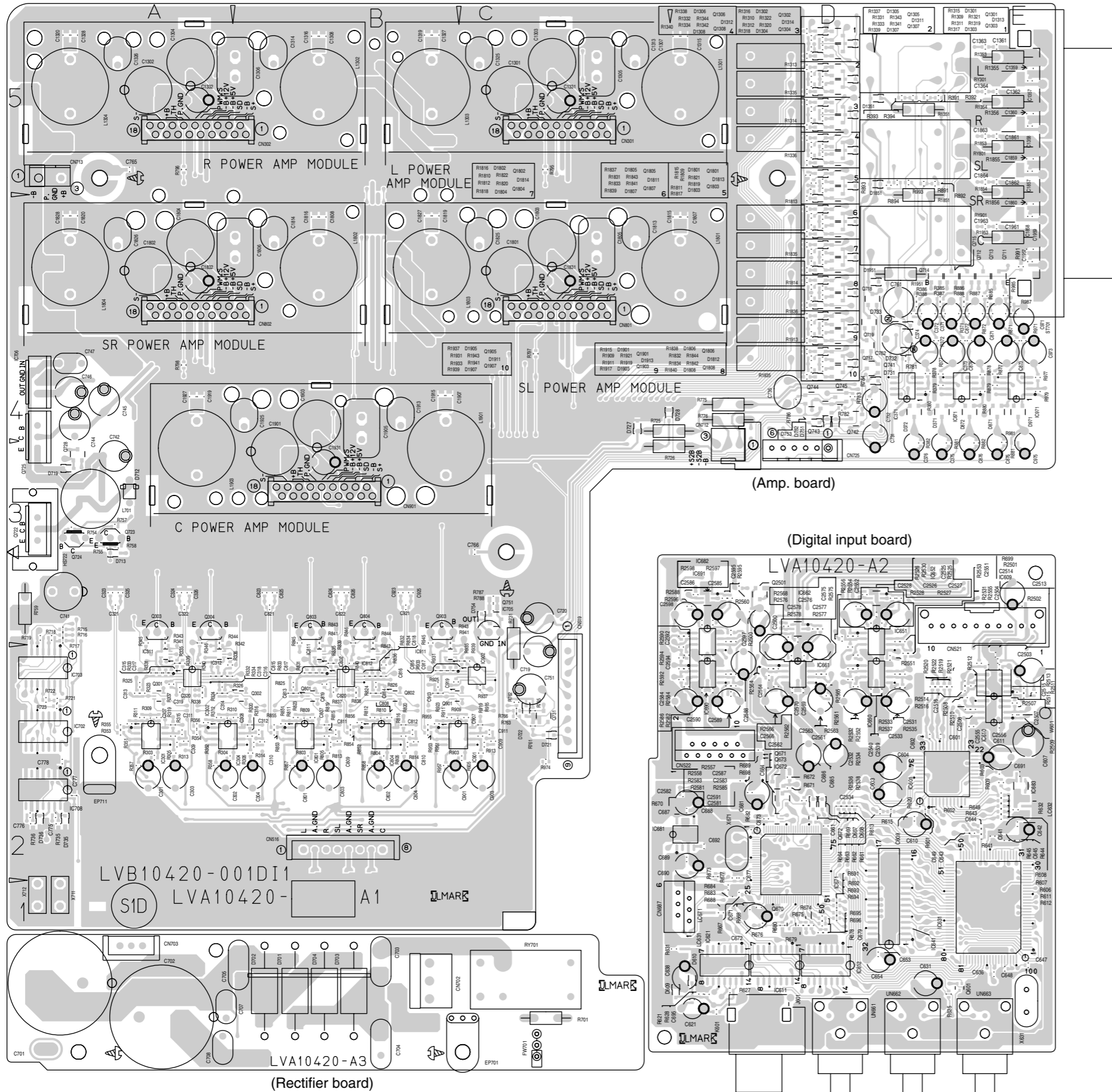
# Printed circuit boards

■ Front board



■ Amp. board

Forward side

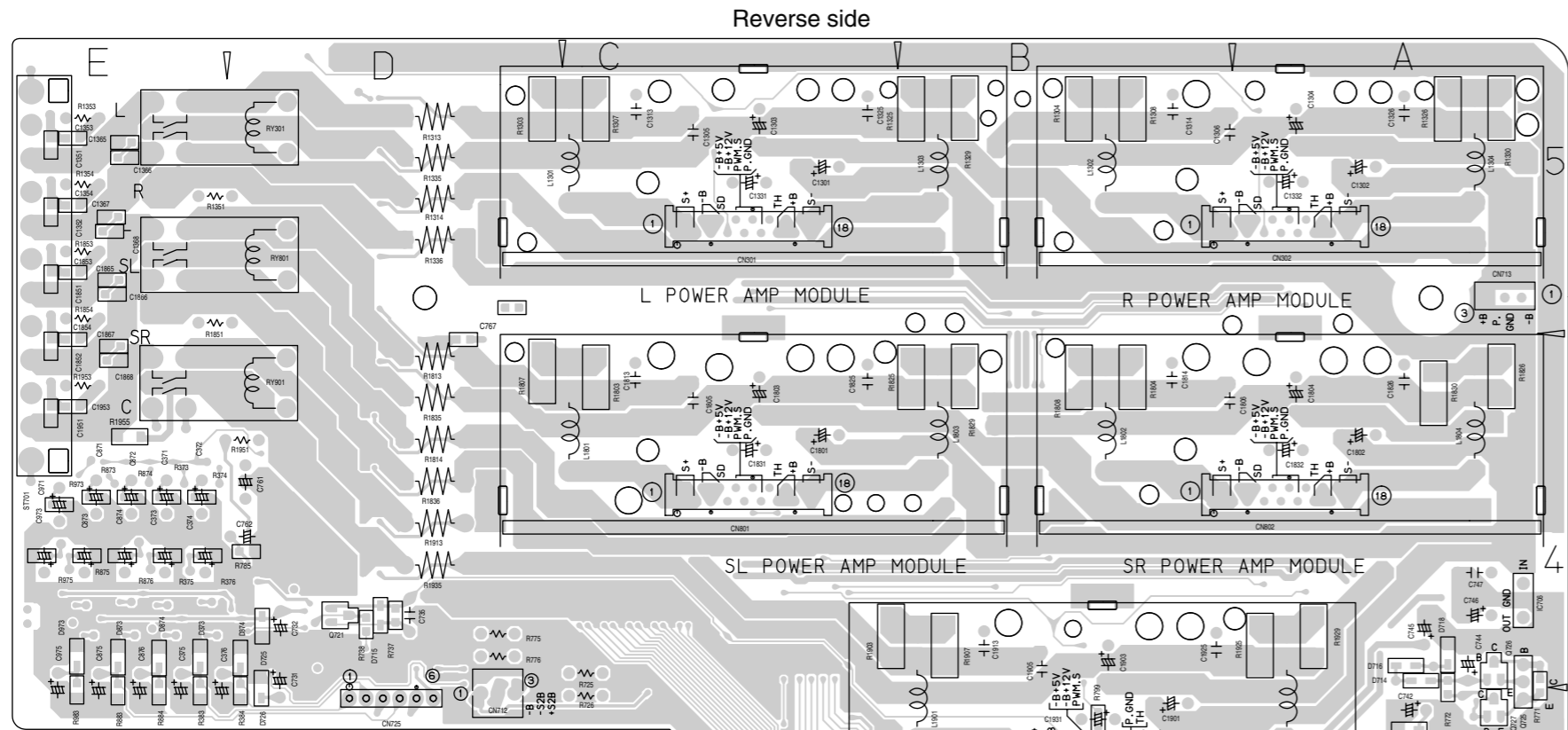


(Amp. board)

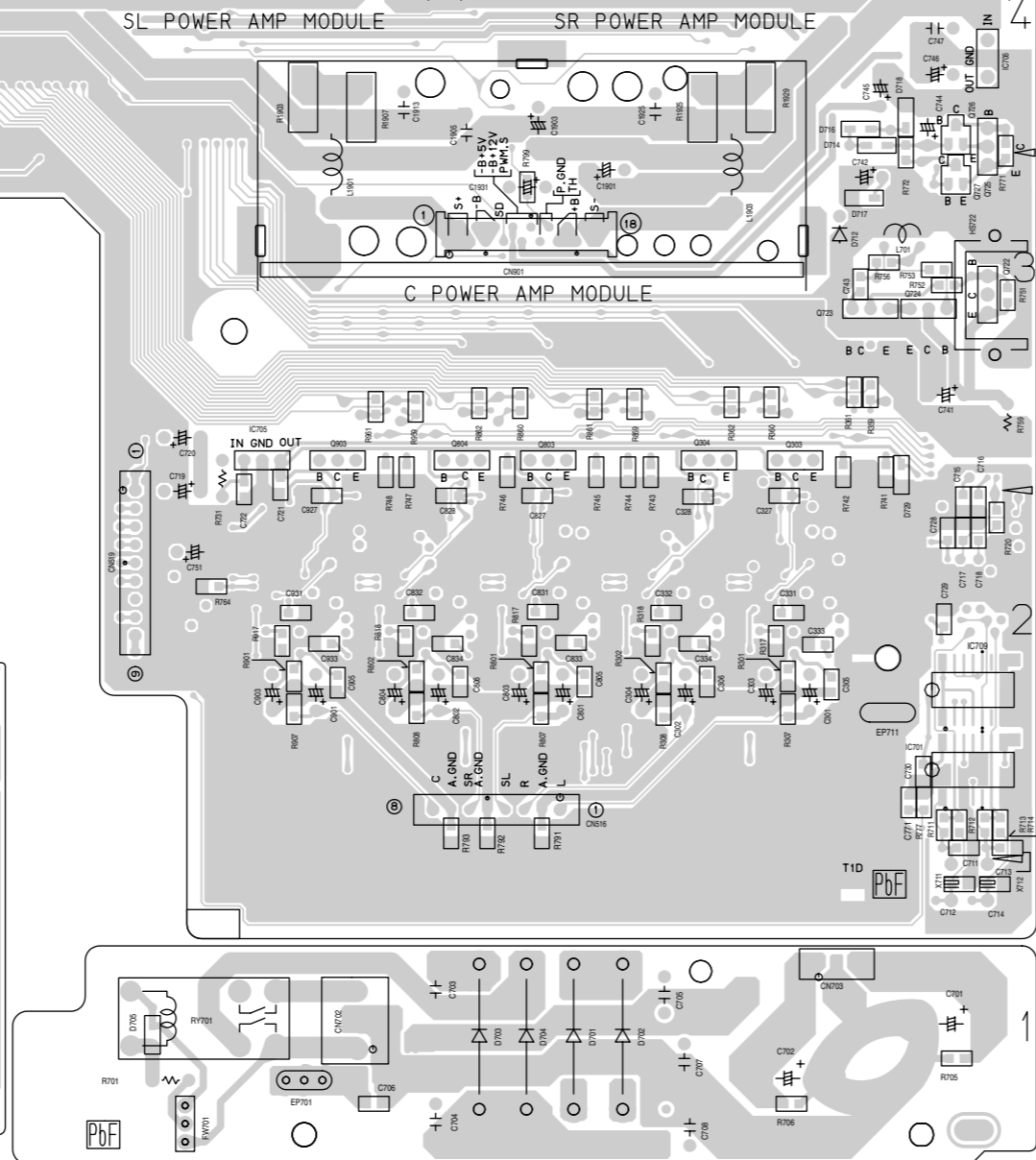
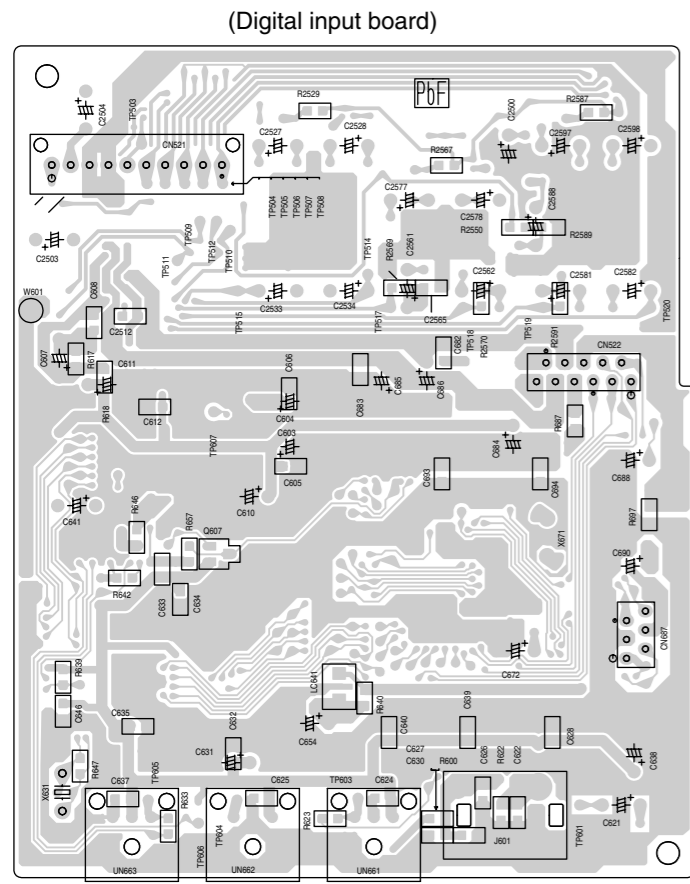
(Digital input board)

(Rectifier board)

■ Amp. board



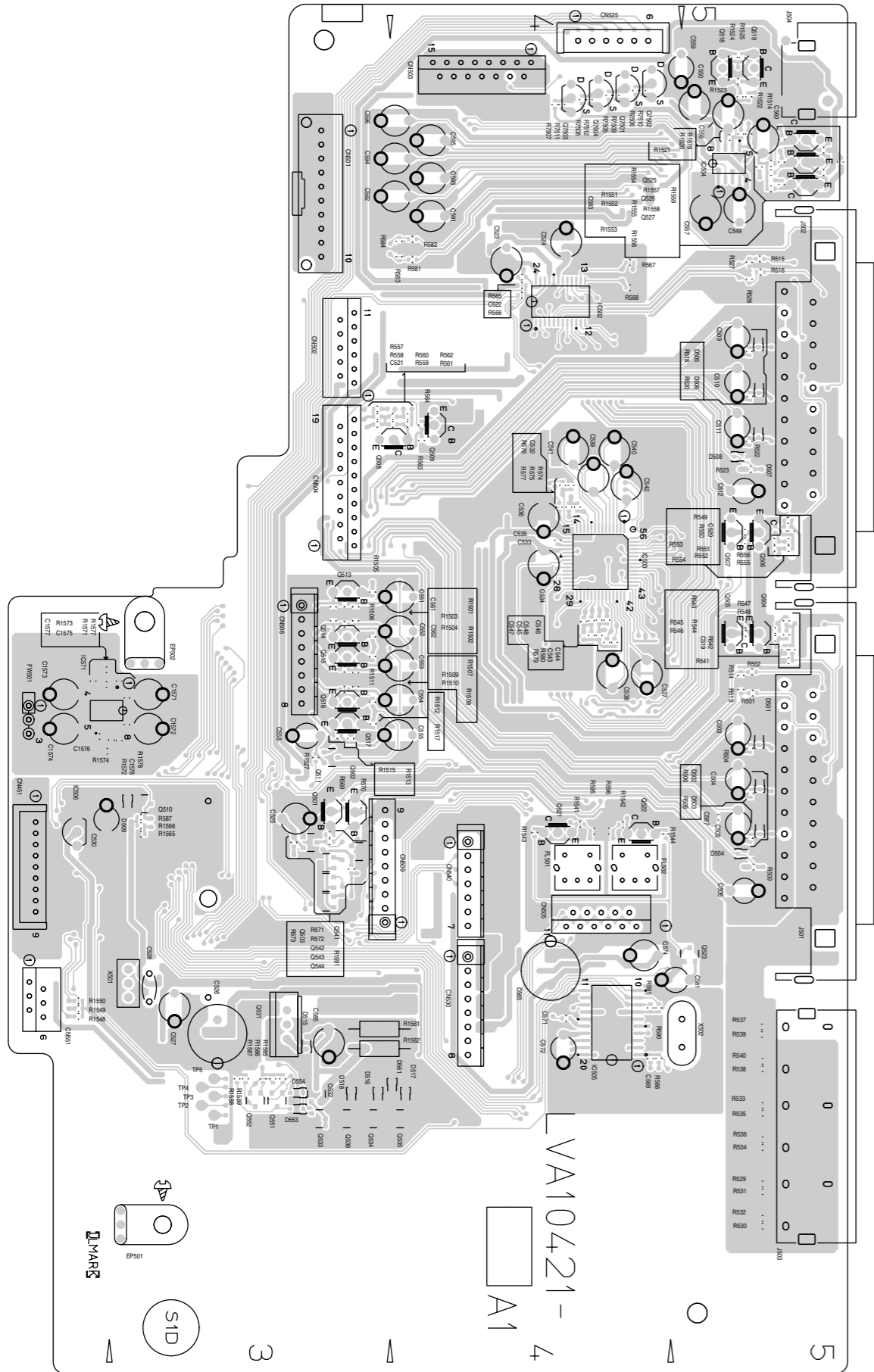
(Amp. board)



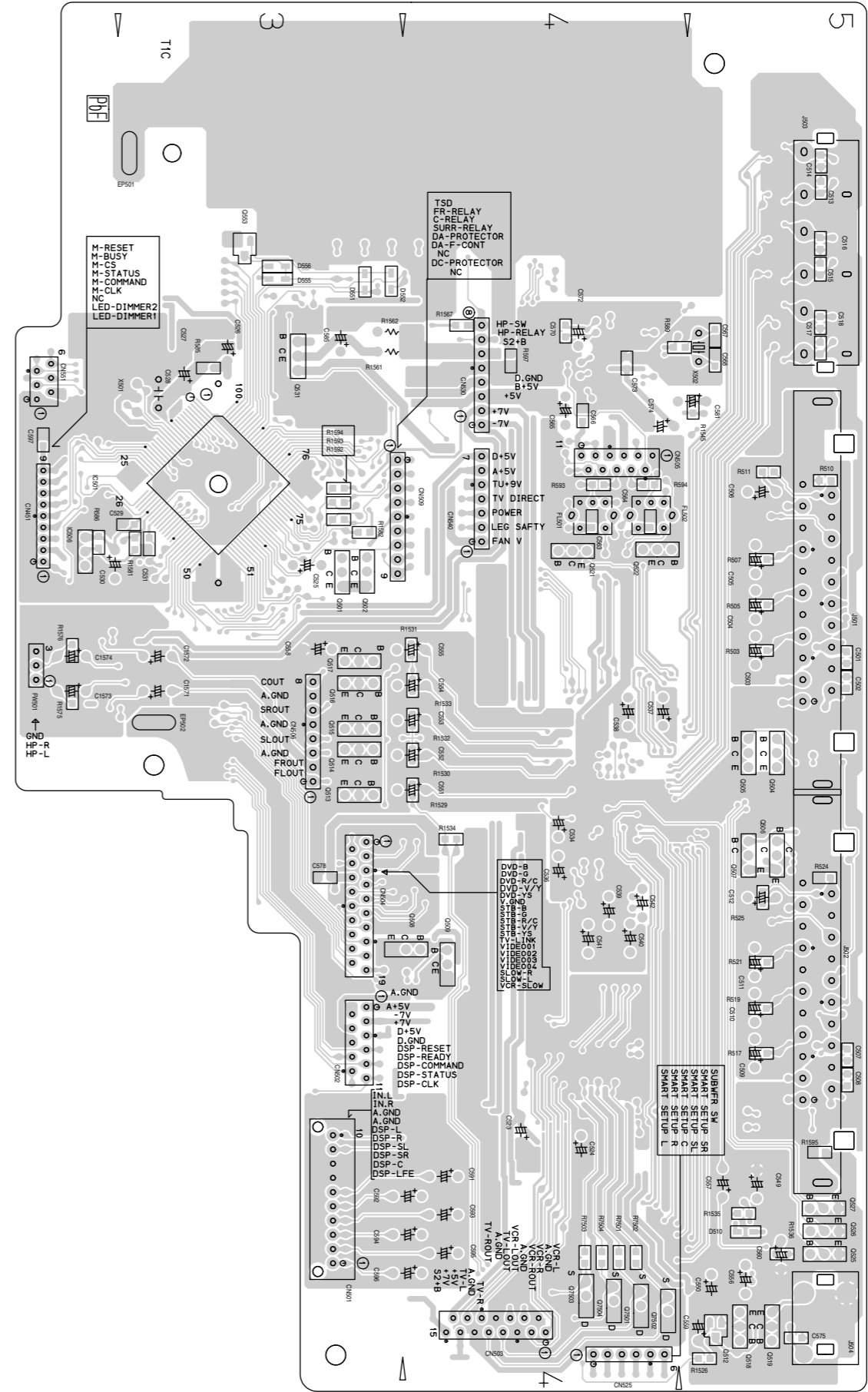
(Rectifier board)

■ Input board (1/2)

Forward side  
(Main board)

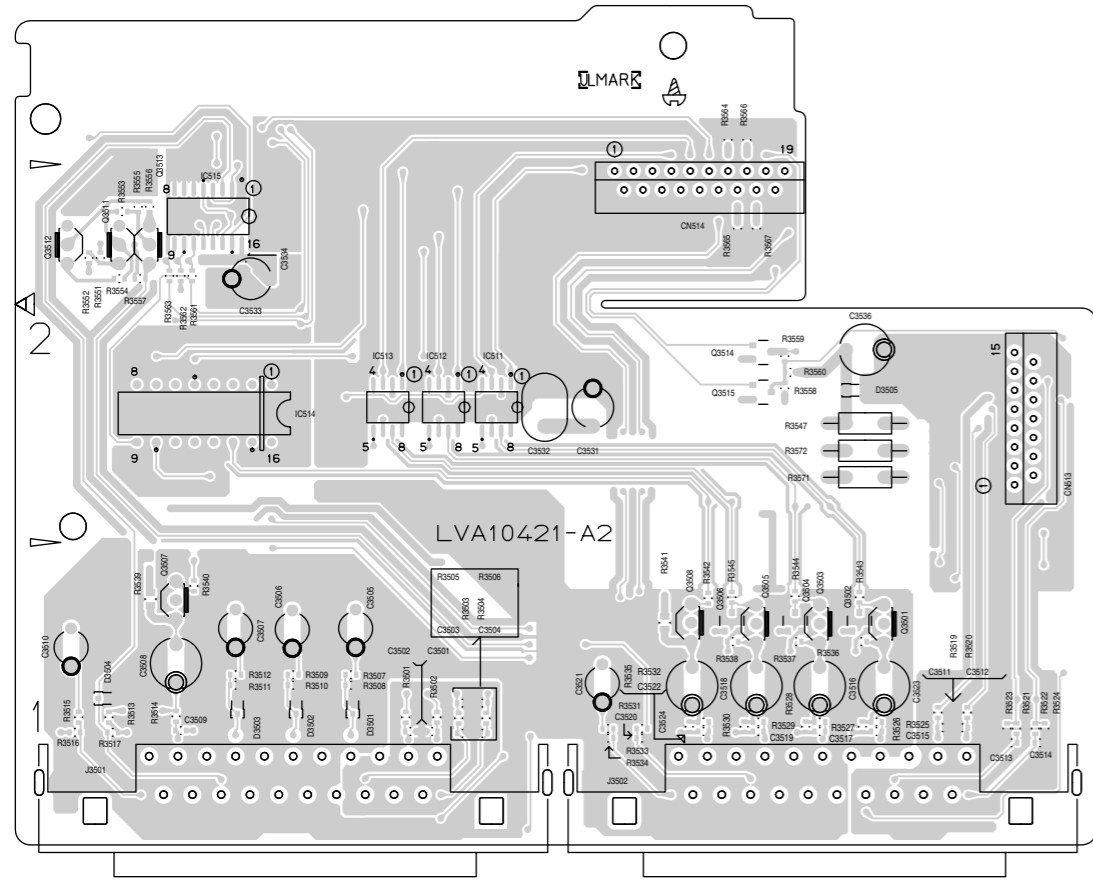


Reverse side  
(Main board)

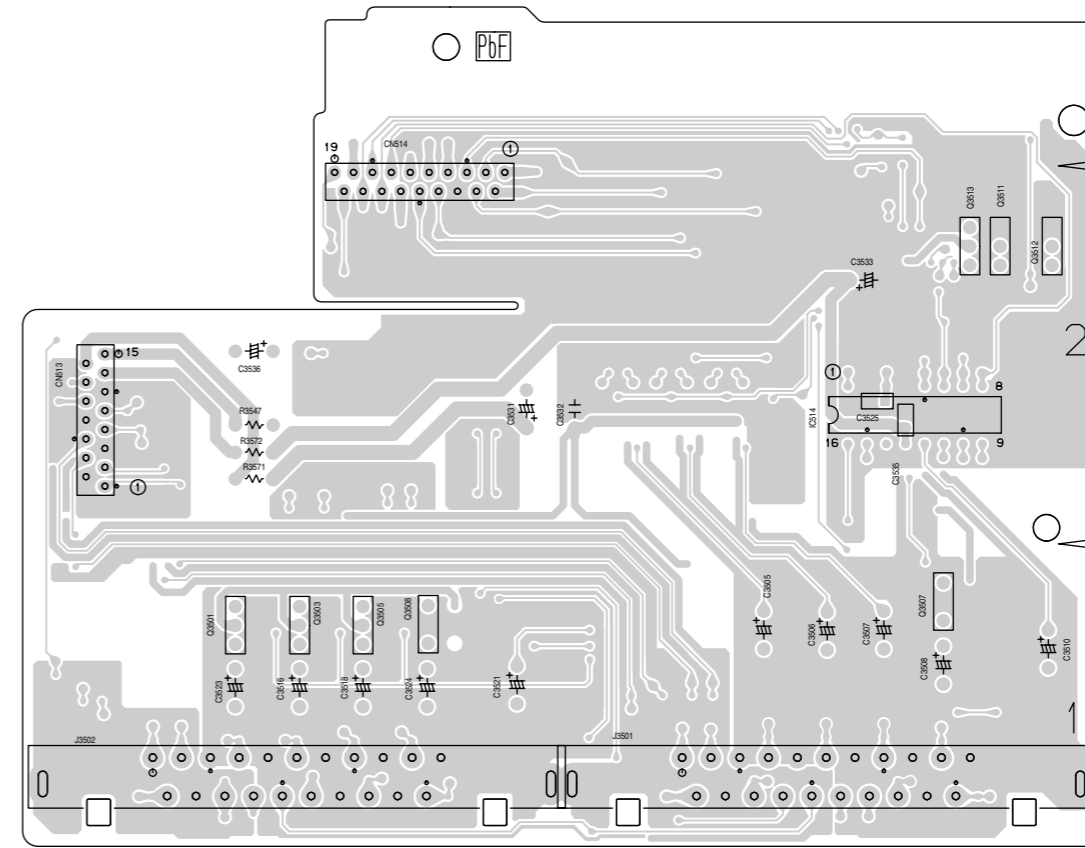


■ Input board (2/2)

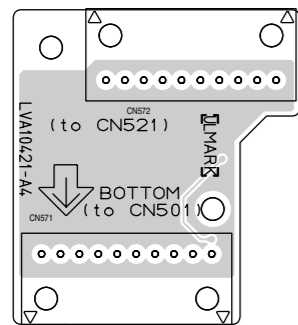
Forward side  
(Digital output board)



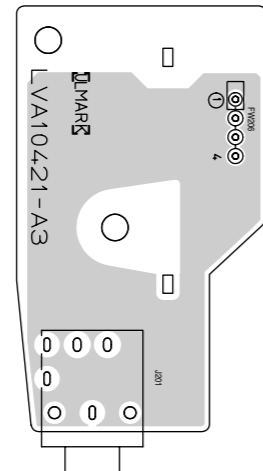
Reverse side  
(Digital output board)



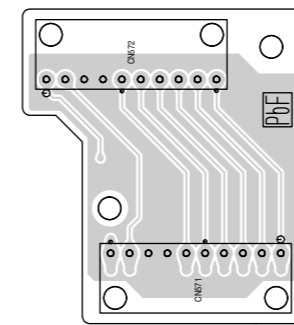
(Connector board)



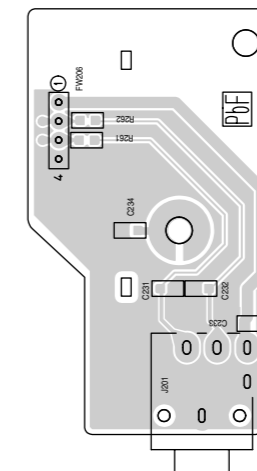
(Headphone jack board)



(Connector board)



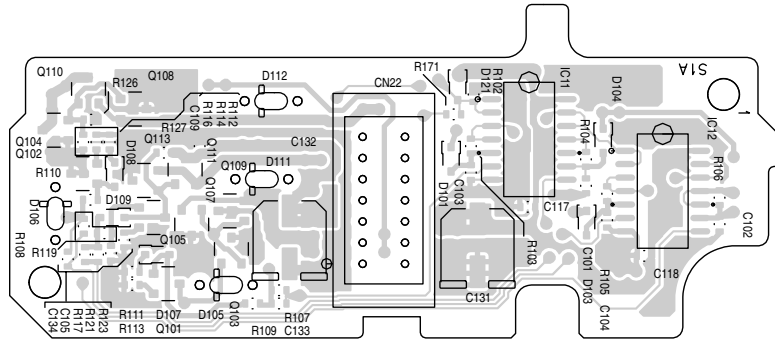
(Headphone jack board)



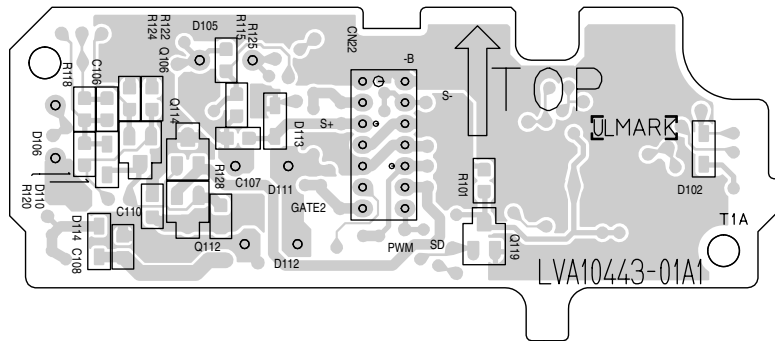


■ Power amp. driver board

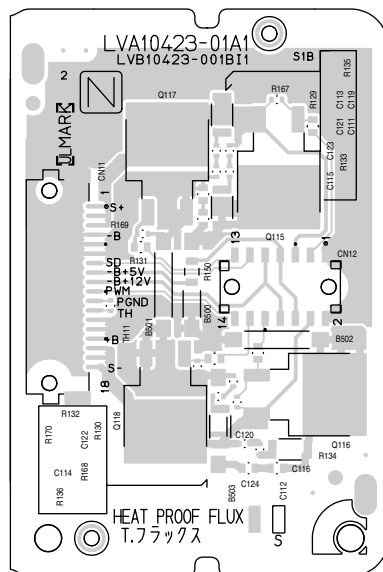
Forward side



Reverse side



■ Power amp. board



**JVC**

**VICTOR COMPANY OF JAPAN, LIMITED**

AV & MULTIMEDIA COMPANY AUDIO/VIDEO SYSTEMS CATEGORY 10-1, 1chome, Ohwatari-machi, Maebashi-city, 371-8543, Japan

(No.MB127SCH)



Printed in Japan  
WPC