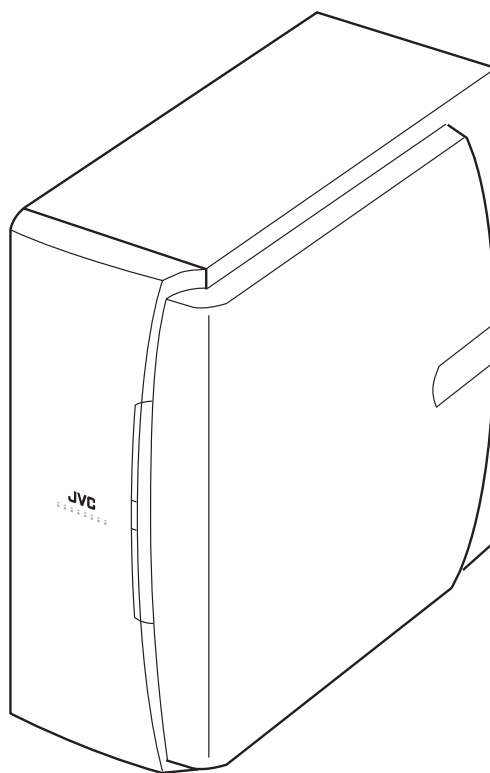


JVC

SERVICE MANUAL

POWERED SUB WOOFER

SP-DWF10



Area suffix

J	U.S.A.
A	Australia
E	Continental Europe
US	Singapore
UF	China
UP	Korea
UT	Taiwan
UX	Saudi Arabia
UJ	U.S.Military

TABLE OF CONTENTS

1	PRECAUTION	1-3
2	SPECIFIC SERVICE INSTRUCTIONS	1-5
3	DISASSEMBLY	1-6
4	ADJUSTMENT	1-9
5	TROUBLESHOOTING	1-10

SPECIFICATION

Type	Powered Subwoofer Bass-reflex type (magnetically shielded type)
Speaker	16.0 cm cone × 1 (6-5/16")
Frequency Range	32 Hz 200 Hz
Impedance	4 Ω
Input terminals	INPUT (LOW-LEVEL)
Power requirements	AC 120 V , 60 Hz
Output power of built-in amp	100 W (45 Hz, 4 Ω, 10 % THD)
Power Handling Capacity	25 W
Dimensions (W × H × D)	185 mm × 374 mm × 345 mm (7-5/16" × 14-3/4" × 13-5/8")
Mass	8.86 kg (19.6 lbs)

Design and specifications are subject to change without notice.

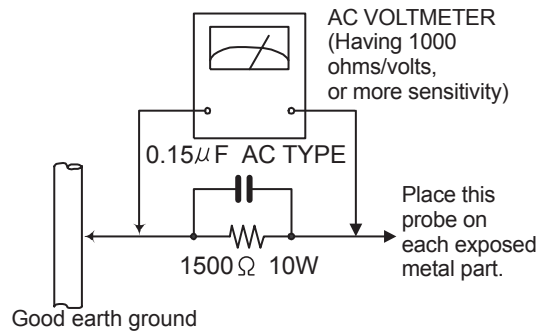
SECTION 1 PRECAUTION

1.1 Safety Precautions

- (1) This design of this product contains special hardware and many circuits and components specially for safety purposes. For continued protection, no changes should be made to the original design unless authorized in writing by the manufacturer. Replacement parts must be identical to those used in the original circuits. Services should be performed by qualified personnel only.
- (2) Alterations of the design or circuitry of the product should not be made. Any design alterations of the product should not be made. Any design alterations or additions will void the manufacturer's warranty and will further relieve the manufacturer of responsibility for personal injury or property damage resulting therefrom.
- (3) Many electrical and mechanical parts in the products have special safety-related characteristics. These characteristics are often not evident from visual inspection nor can the protection afforded by them necessarily be obtained by using replacement components rated for higher voltage, wattage, etc. Replacement parts which have these special safety characteristics are identified in the Parts List of Service Manual. Electrical components having such features are identified by shading on the schematics and by (Δ) on the Parts List in the Service Manual. The use of a substitute replacement which does not have the same safety characteristics as the recommended replacement parts shown in the Parts List of Service Manual may create shock, fire, or other hazards.
- (4) The leads in the products are routed and dressed with ties, clamps, tubings, barriers and the like to be separated from live parts, high temperature parts, moving parts and/or sharp edges for the prevention of electric shock and fire hazard. When service is required, the original lead routing and dress should be observed, and it should be confirmed that they have been returned to normal, after reassembling.
- (5) Leakage shock hazard testing
After reassembling the product, always perform an isolation check on the exposed metal parts of the product (antenna terminals, knobs, metal cabinet, screw heads, headphone jack, control shafts, etc.) to be sure the product is safe to operate without danger of electrical shock. Do not use a line isolation transformer during this check.
 - Plug the AC line cord directly into the AC outlet. Using a "Leakage Current Tester", measure the leakage current from each exposed metal part of the cabinet, particularly any exposed metal part having a return path to the chassis, to a known good earth ground. Any leakage current must not exceed 0.5mA AC (r.m.s.).
 - Alternate check method
Plug the AC line cord directly into the AC outlet. Use an AC voltmeter having, 1,000 Ω per volt or more sensitivity in the following manner. Connect a 1,500 Ω 10W resistor paralleled by a 0.15 μ F AC-type capacitor between an exposed metal part and a known good earth ground. Measure the AC voltage across the resistor with the AC

voltmeter.

Move the resistor connection to each exposed metal part, particularly any exposed metal part having a return path to the chassis, and measure the AC voltage across the resistor. Now, reverse the plug in the AC outlet and repeat each measurement. Voltage measured any must not exceed 0.75 V AC (r.m.s.). This corresponds to 0.5 mA AC (r.m.s.).



1.2 Warning

- (1) This equipment has been designed and manufactured to meet international safety standards.
- (2) It is the legal responsibility of the repairer to ensure that these safety standards are maintained.
- (3) Repairs must be made in accordance with the relevant safety standards.
- (4) It is essential that safety critical components are replaced by approved parts.
- (5) If mains voltage selector is provided, check setting for local voltage.

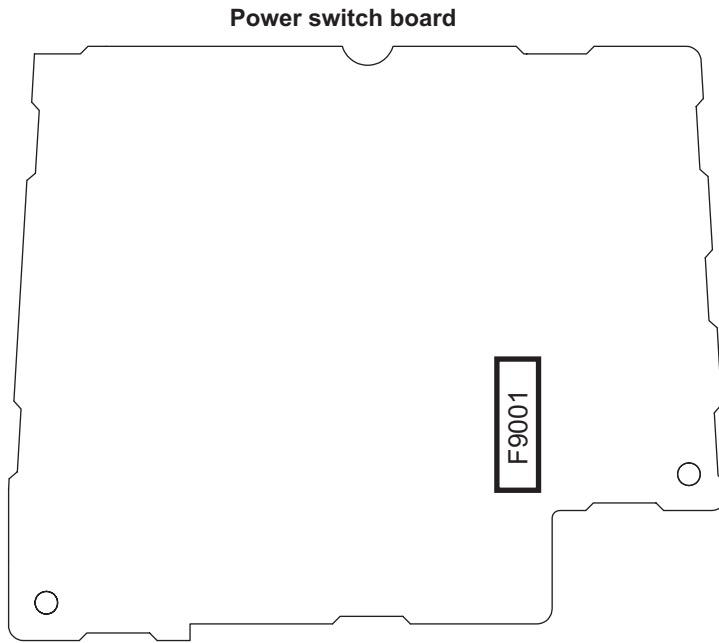
1.3 Caution

Burrs formed during molding may be left over on some parts of the chassis.
Therefore, pay attention to such burrs in the case of pre-forming repair of this system.

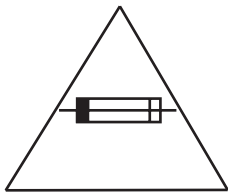
1.4 Critical parts for safety

In regard with component parts appearing on the silk-screen printed side (parts side) of the PWB diagrams, the parts that are printed over with black such as the resistor (\blacksquare), diode (\blacksquare) and ICP (\bullet) or identified by the " Δ " mark nearby are critical for safety. When replacing them, be sure to use the parts of the same type and rating as specified by the manufacturer.
(This regulation does not Except the J and C version)

1.5 Importance administering point on the safety



For USA and Canada / pour Etats - Unis d' Amériq ue et Canada



Caution: For continued protection against risk of fire, replace only with same type 3 A/125 V for F901. This symbol specifies the type of fast operating fuse.

Precaution: Pour la protection continue contre les risques d'incendie, remplacer uniquement par le meme type: fusible 3 A/125 V pour les F901. Cê symbole specifie le type de fusible a action rapide.

SECTION 2
SPECIFIC SERVICE INSTRUCTIONS

This service manual does not describe SPECIFIC SERVICE INSTRUCTIONS.

SECTION 3 DISASSEMBLY

3.1 Removing the Amplifier assembly (See Figs.1 and 2)

- (1) From the back side of the main body, remove the eleven screws **A** attaching the amplifier assembly. (See Fig.1.)
- (2) Take out the amplifier assembly from the main body.
- (3) Disconnect the wire connector from the back side of the amplifier assembly. (See Fig. 2.)
- (4) Disconnect the speaker wire from the speaker terminal. (See Fig.2.)

3.2 Removing the back panel (See Figs.1 to 3)

- (1) From the back side of the main body, remove the eleven screws **A** attaching the amplifier assembly. (See Fig.1.)

Reference:

Remove the amplifier assembly from the main body as required. (See Fig.2.)

- (2) Remove the five screws **B** attaching the back panel. (See Fig.3.)

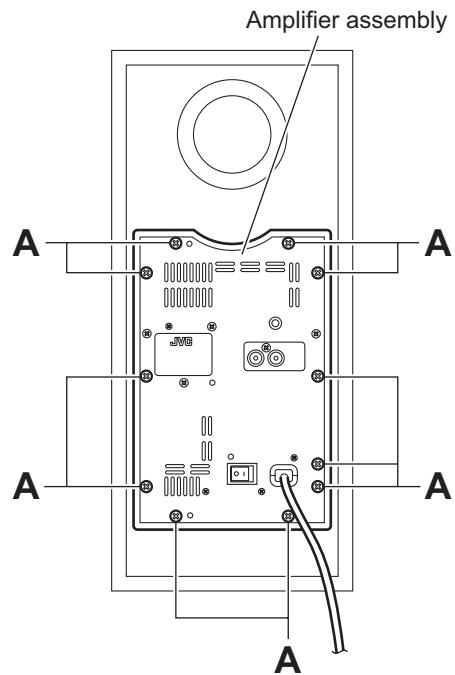


Fig.1

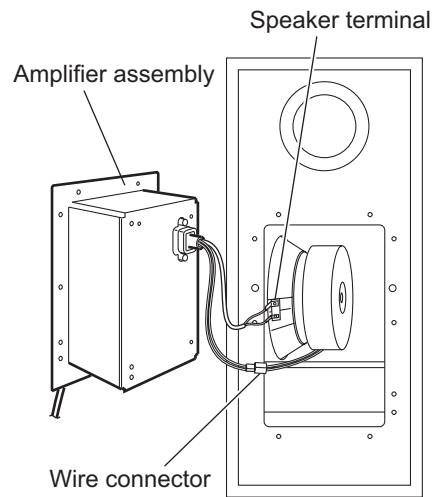


Fig.2

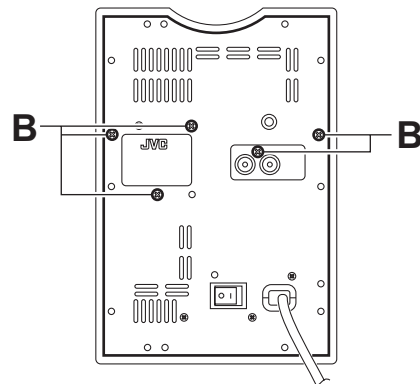


Fig.3

3.3 Removing the power cord (See Figs.4 and 5)

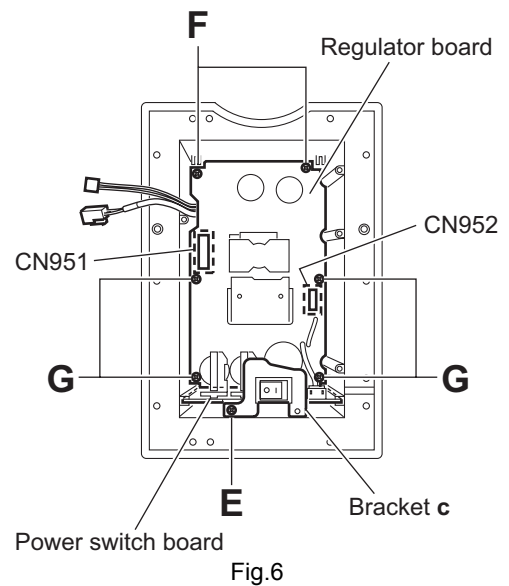
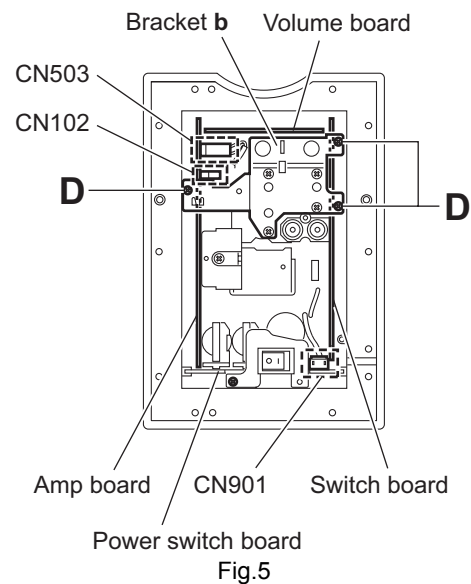
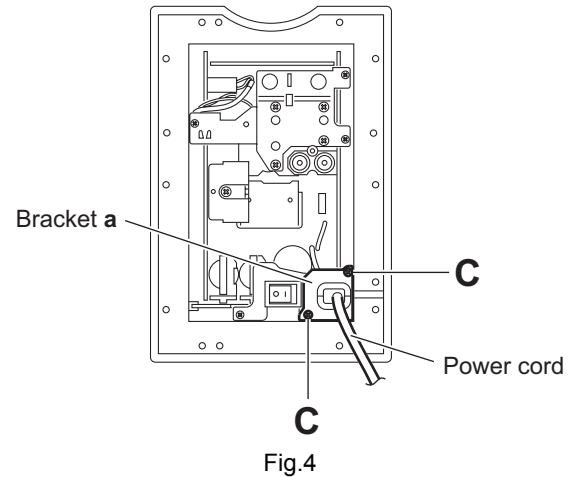
- Prior to performing the following procedures, remove the back panel.
- (1) Remove the two screws **C** attaching the bracket **a**. (See Fig.4.)
- (2) Pull out the bracket **a** toward you.
- (3) Disconnect the power cord from the connector **CN901** on the power switch board. (See Fig.5.)

3.4 Removing the amplifier board assembly (Amp board, volume board, switch board) (See Figs.5 and 6)

- Prior to performing the following procedures, remove the back panel and the power cord.
- Remove the amplifier assembly from the main body as required. (See Figs.1 and 2.)
- (1) Remove the three screws **D** attaching the bracket **b**. (See Fig 5.)
- (2) Disconnect the wire from the connectors **CN102** and **CN503** on the amp board. (See Fig.5.)
- (3) Remove the amplifier board assembly from the connectors **CN951** and **CN952** on the regulator board. (See Fig.6.)
- (4) Take out the amplifier board assembly.

3.5 Removing the power supply board assembly (Regulator board, power switch board) (See Fig.6)

- Prior to performing the following procedures, remove the back panel, power cord and amplifier board assembly.
- Remove the amplifier assembly from the main body as required. (See Figs.1 and 2.)
- (1) Remove the screw **E** attaching the bracket **c**. (See Fig.6.)
- (2) Remove the two screws **F** and four screws **G** attaching the regulator board.
- (3) Take out the power supply board assembly.



3.6 Removing the net assembly (See Fig 7)

- (1) From side of the main body, insert the tip of the flat-bladed screwdriver or similar tool into the space between the main body and net assembly, and lift the net assembly little by little to remove. (See Fig 7)

Note:

To prevent damaging the net assembly and main body, insert cushioning plates etc. and below the tip of the flat-bladed screwdriver or similar tool.

From right side of the main body, release the eight joints **d**, and take out the net assembly from the main body. (See Fig 7)

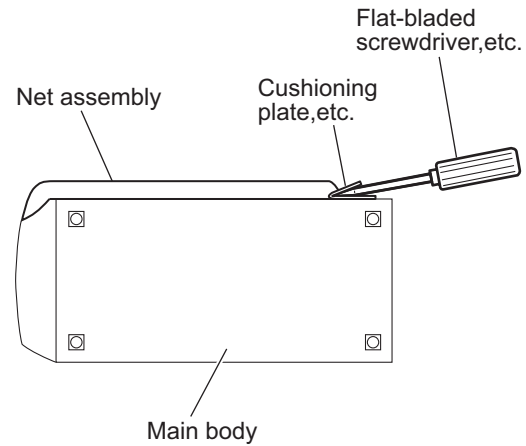


Fig.7

3.7 Removing the speaker. (See Fig 8 and Fig 9)

- Prior to performing the following procedures, remove the net assembly.
 - (1) Remove the six screws **H** attaching the speaker. (Fig 8)
 - (2) Take out the speaker from the main body.
 - (3) Disconnect the wires from the terminal of the speaker. (See Fig 9)

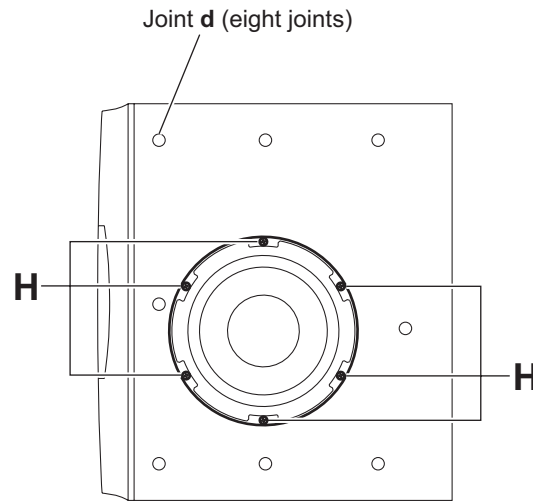


Fig.8

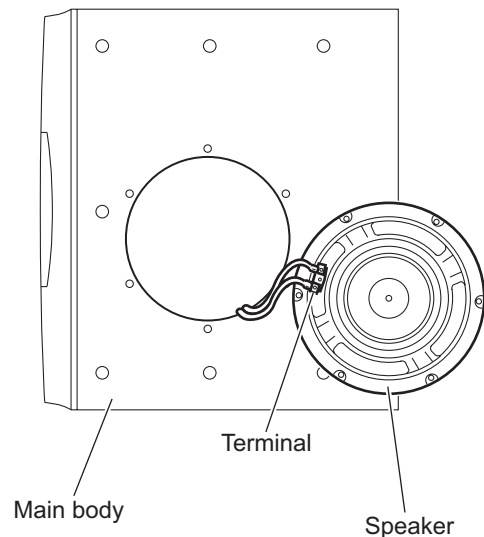


Fig.9

SECTION 4 ADJUSTMENT

This service manual does not describe ADJUSTMENT.

SECTION 5 TROUBLESHOOTING

This service manual does not describe TROUBLESHOOTING.



JVC

Victor Company of Japan, Limited
AV & MULTIMEDIA COMPANY AUDIO/VIDEO SYSTEMS CATEGORY 10-1,1chome,Ohwatari-machi,Maebashi-city,371-8543,Japan

(No.MB251)

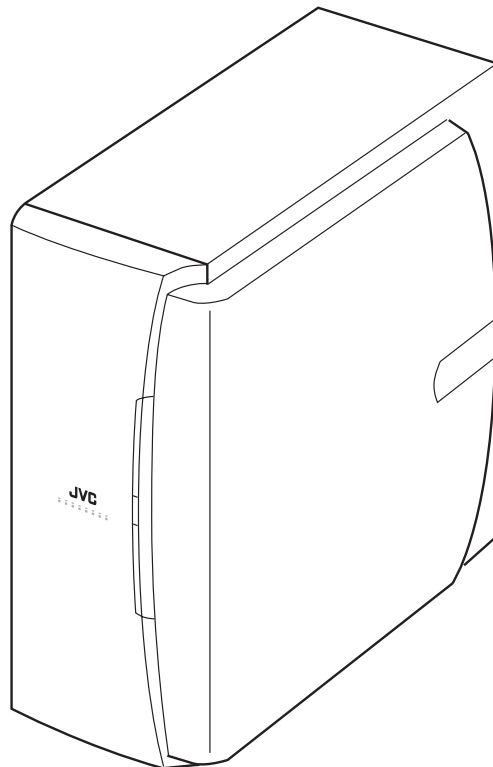
JVC

SCHEMATIC DIAGRAMS

POWERED SUBWOOFER

SP-DWF10

CD-ROM No.SML200406



Area suffix

J	-----	U.S.A.
A	-----	Australia
E	-----	Continental Europe
US	-----	Singapore
UF	-----	China
UP	-----	Korea
UT	-----	Taiwan
UX	-----	Saudi Arabia
UJ	-----	U.S.Military

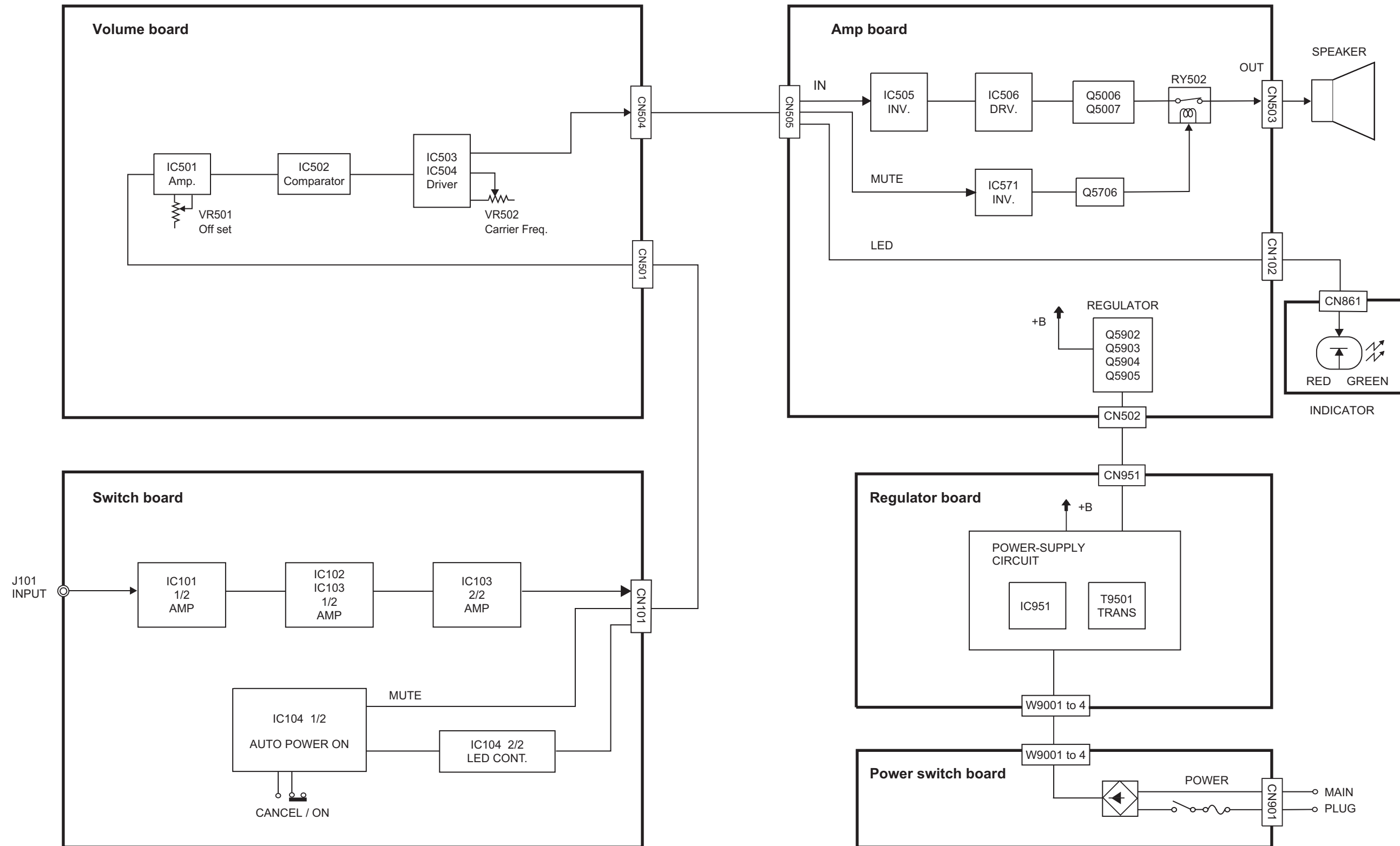
Contents

Block diagram	-----	2-1
Standard schematic diagram	-----	2-2
Printed circuit boards	-----	2-3 to 4

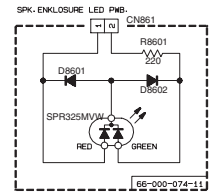
In regard with component parts appearing on the silk-screen printed side (parts side) of the PWB diagrams, the parts that are printed over with black such as the resistor (■), diode (⊣) and ICP (●) or identified by the "⚠" mark nearby are critical for safety.

(This regulation does not correspond to J and C version.)

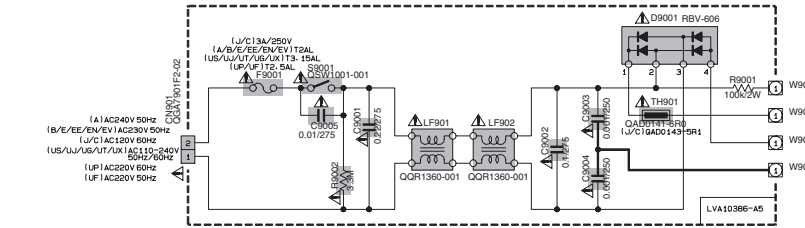
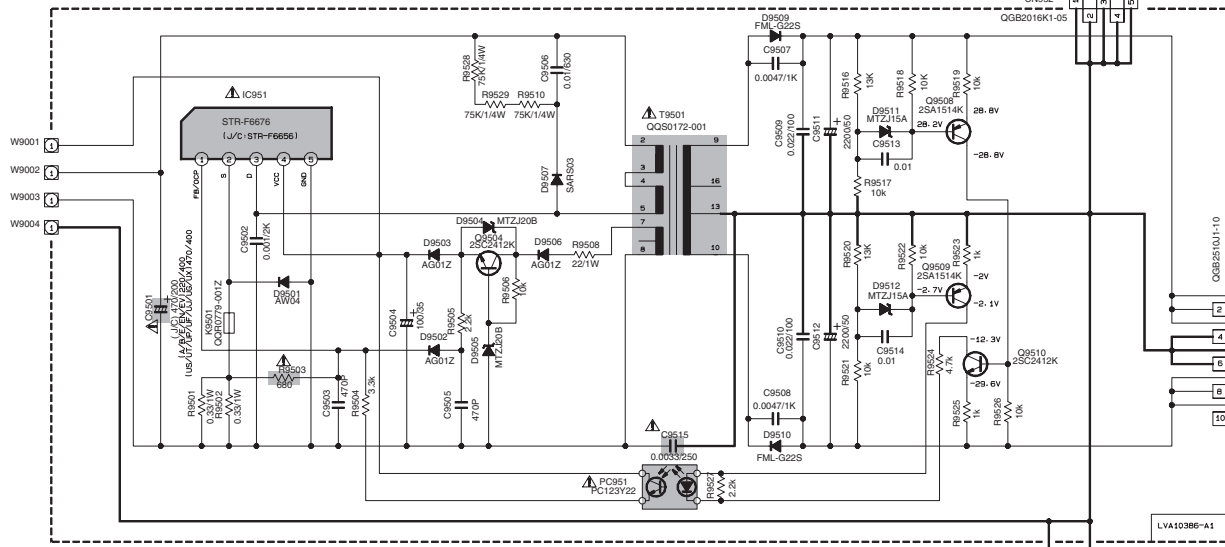
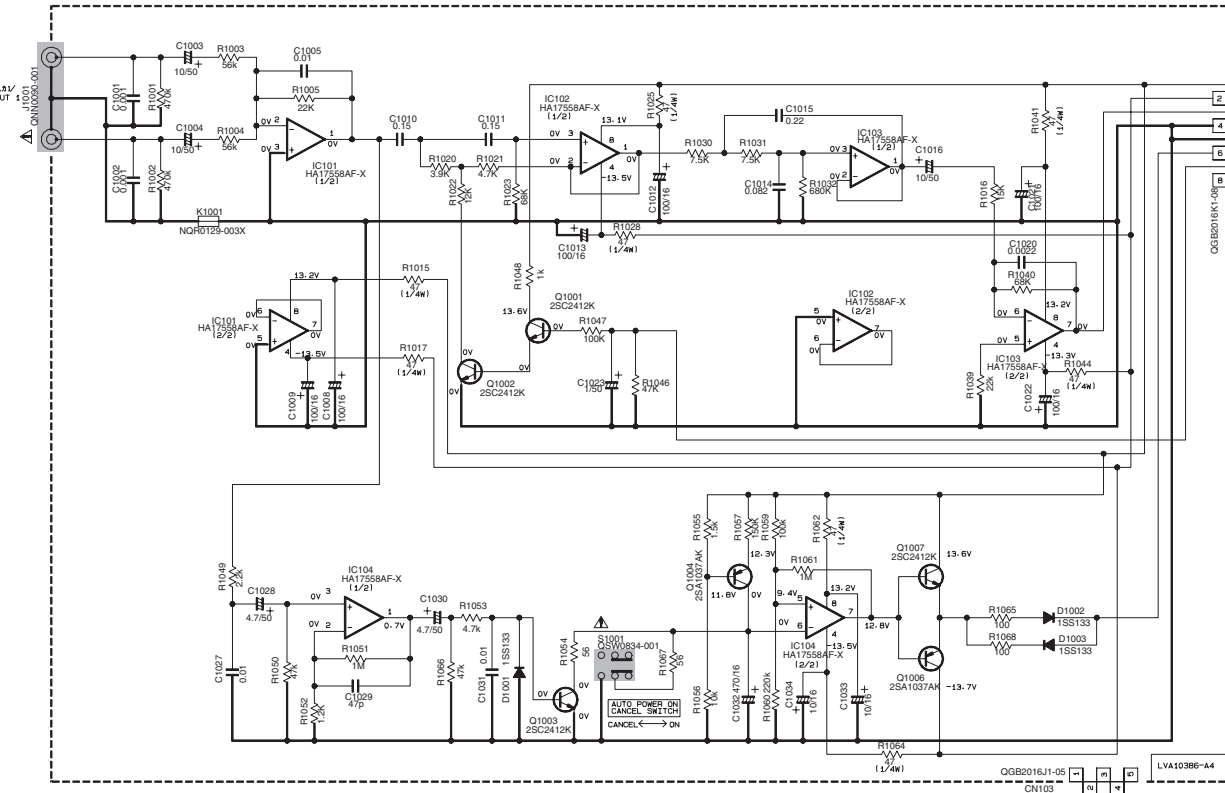
Block diagram



Standard schematic diagram



⚠ Parts are safety assurance parts.
When replacing those parts make
sure to use the specified one.



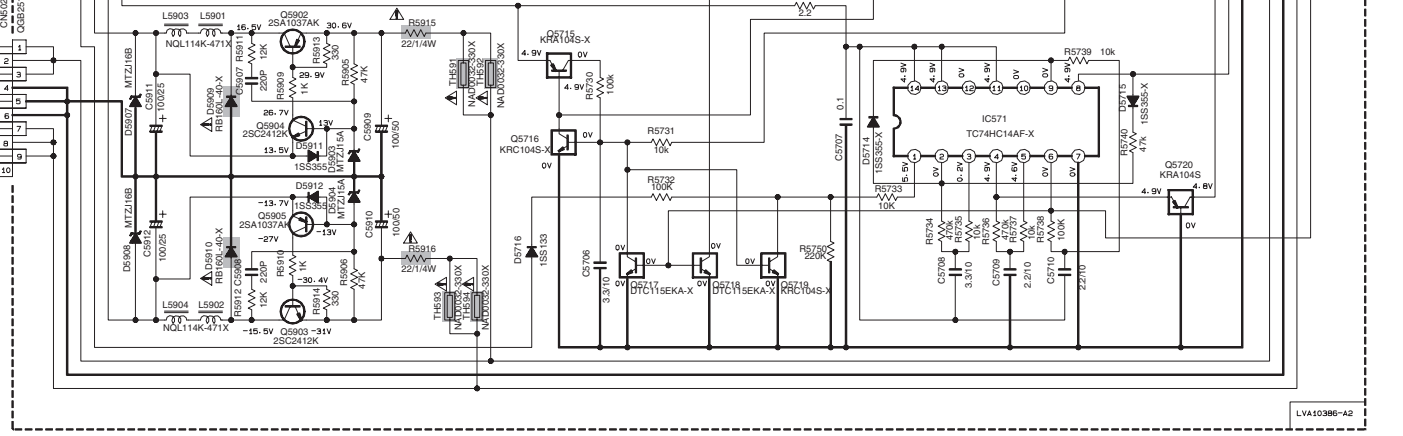
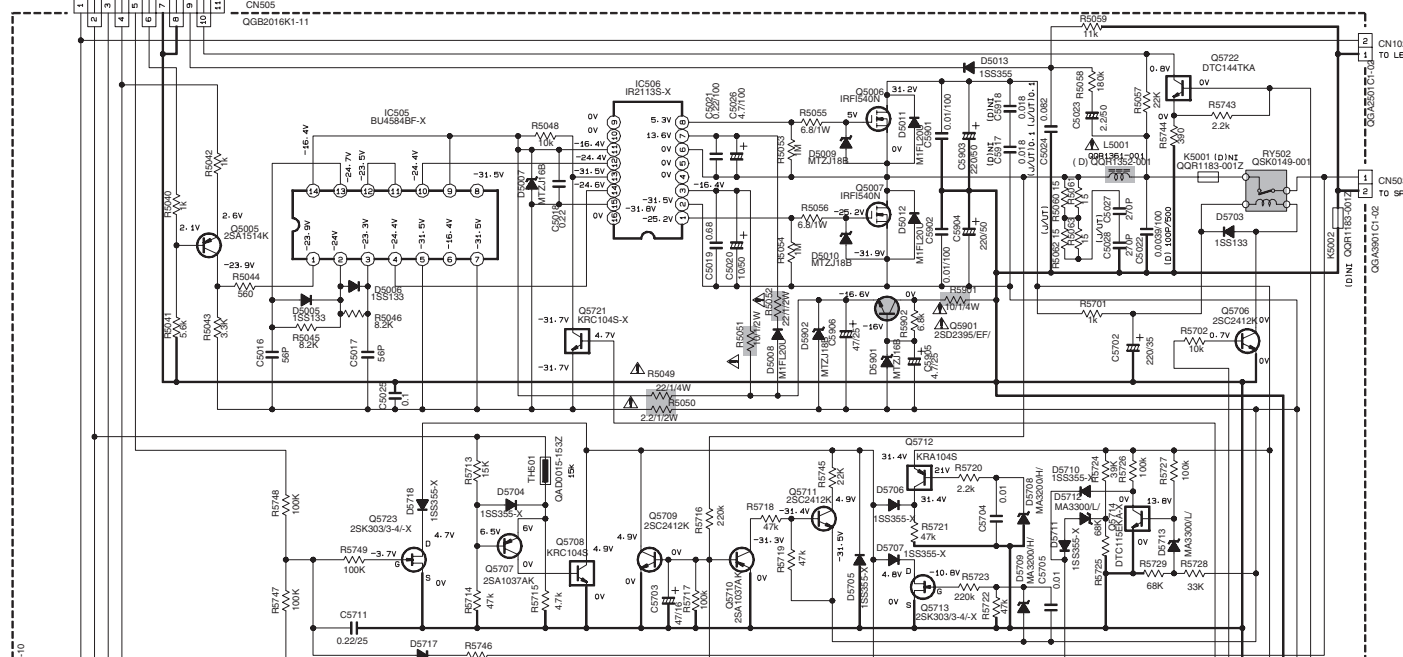
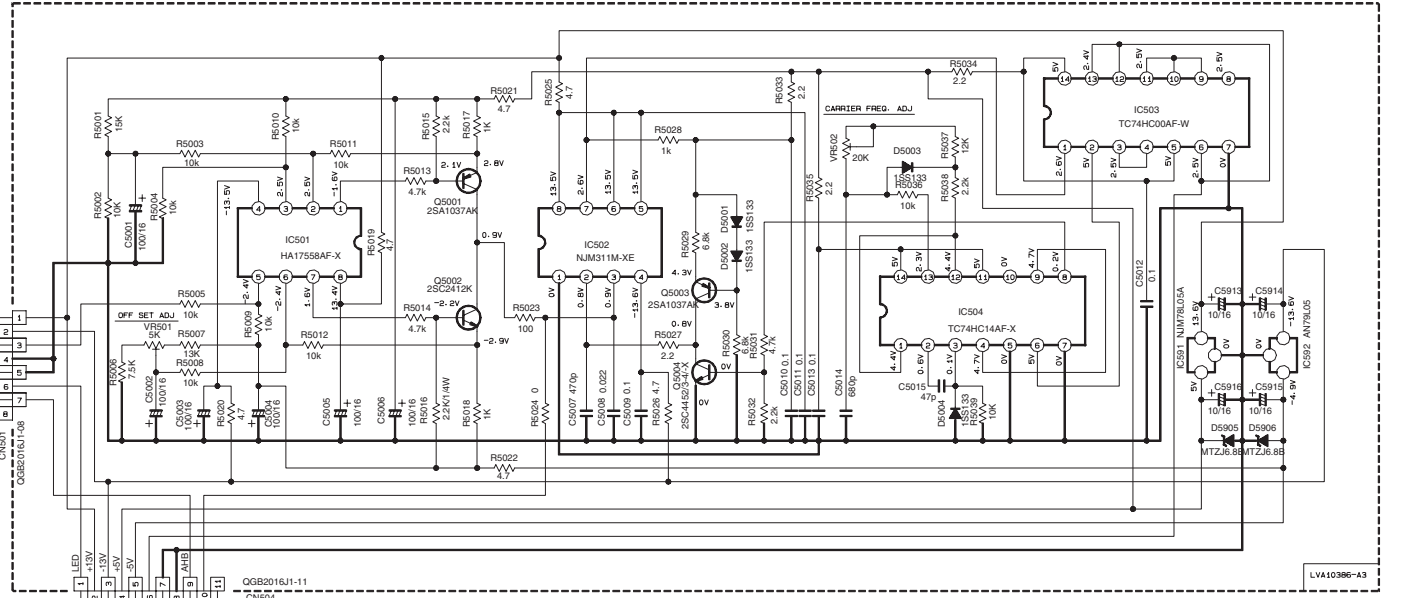
VERSION CODES

- (A) AUSTRALIA
- (J) USA
- (C) CANADA
- (B) U.K.
- (E) CONTINENTAL EUROPE
- (EE) RUSSIA
- (EN) NORDIC COUNTRIES
- (EV) EASTERN EUROPE
- (U) MILITARY
- (U1) TAIWAN
- (K) KOREA
- (F) CHINA
- (S) SINGAPORE AND UNIVERSAL EXCEPT ALL OF ABOVE
- (US) TURKEY/EGYPT/SOUTH AFRICA
- (X) SAUDI ARABIA

- NOTES
- VOLTAGES ARE DC-MEASURED WITH A DIGITAL VOLT METER OR OSCILLOSCOPE WITHOUT INPUT SIGNAL. CONDITION — POWER-ON-NO SIGNAL. AUTO POWER ON/CANCEL. CUT OFF FILTER-VARIABLE.
 - UNLESS OTHERWISE SPECIFIED RESISTORS ARE 1/16W ±5% THICK FILM CHIP RESISTOR. ALL RESISTANCE VALUES ARE IN OHM(Ω). ALL CAPACITORS ARE CERAMIC CAPACITOR OR MYLAR CAPACITOR. ALL CAPACITANCE VALUES ARE IN nF(pF). ALL INDUCTANCE VALUES ARE IN mH(mH). ALL E-CAPACITORS ARE SHOWN IN THE FORM OF CAPACITANCE (μF)/RATED VOLTAGE (V).

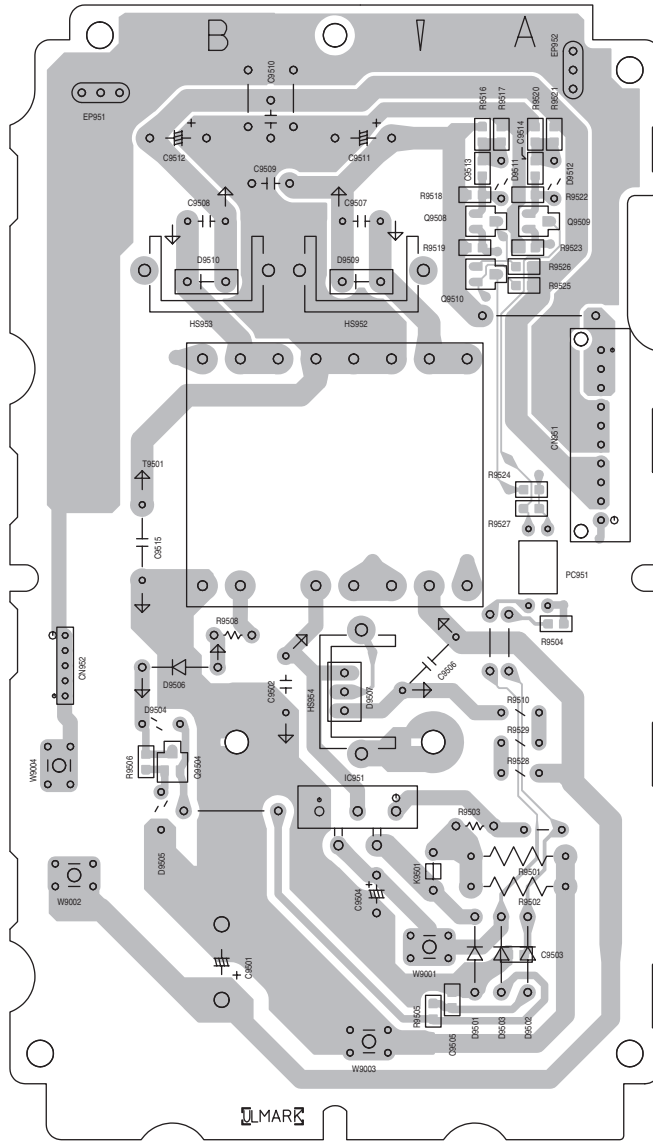
TABLE1 DIGITAL TRANSISTOR

--	--	--	--

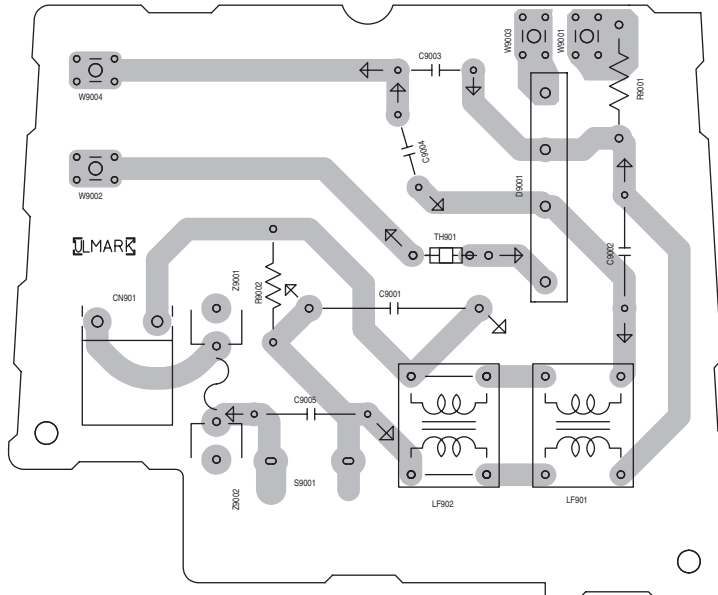


■ Main board

(Regulator board)



(Power switch board)



< MEMO >

JVC

Victor Company of Japan, Limited

AV & MULTIMEDIA COMPANY AUDIO/VIDEO SYSTEMS CATEGORY 10-1,1chome,Ohwatari-machi,Maebashi-city,371-8543,Japan

(No.MB251SCH)



Printed in Japan
WPC

PARTS LIST

[SP-DWF10]

* All printed circuit boards and its assemblies are not available as service parts.

Area suffix

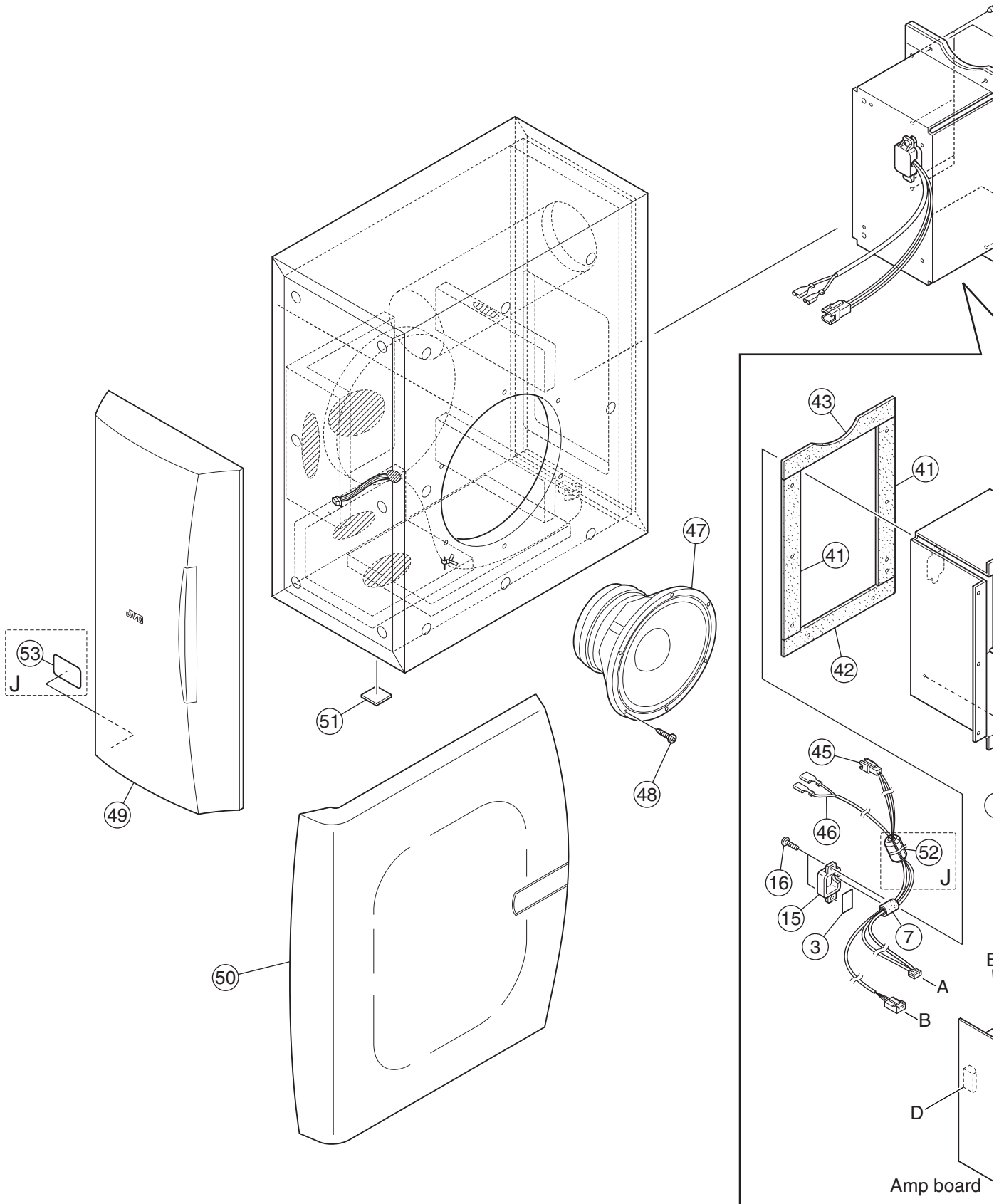
J ----- U.S.A.
A ----- Australia
E ----- Continental Europe
US ----- Singapore
UF ----- China
UP ----- Korea
UT ----- Taiwan
UX ----- Saudi Arabia
UJ ----- U.S.Military

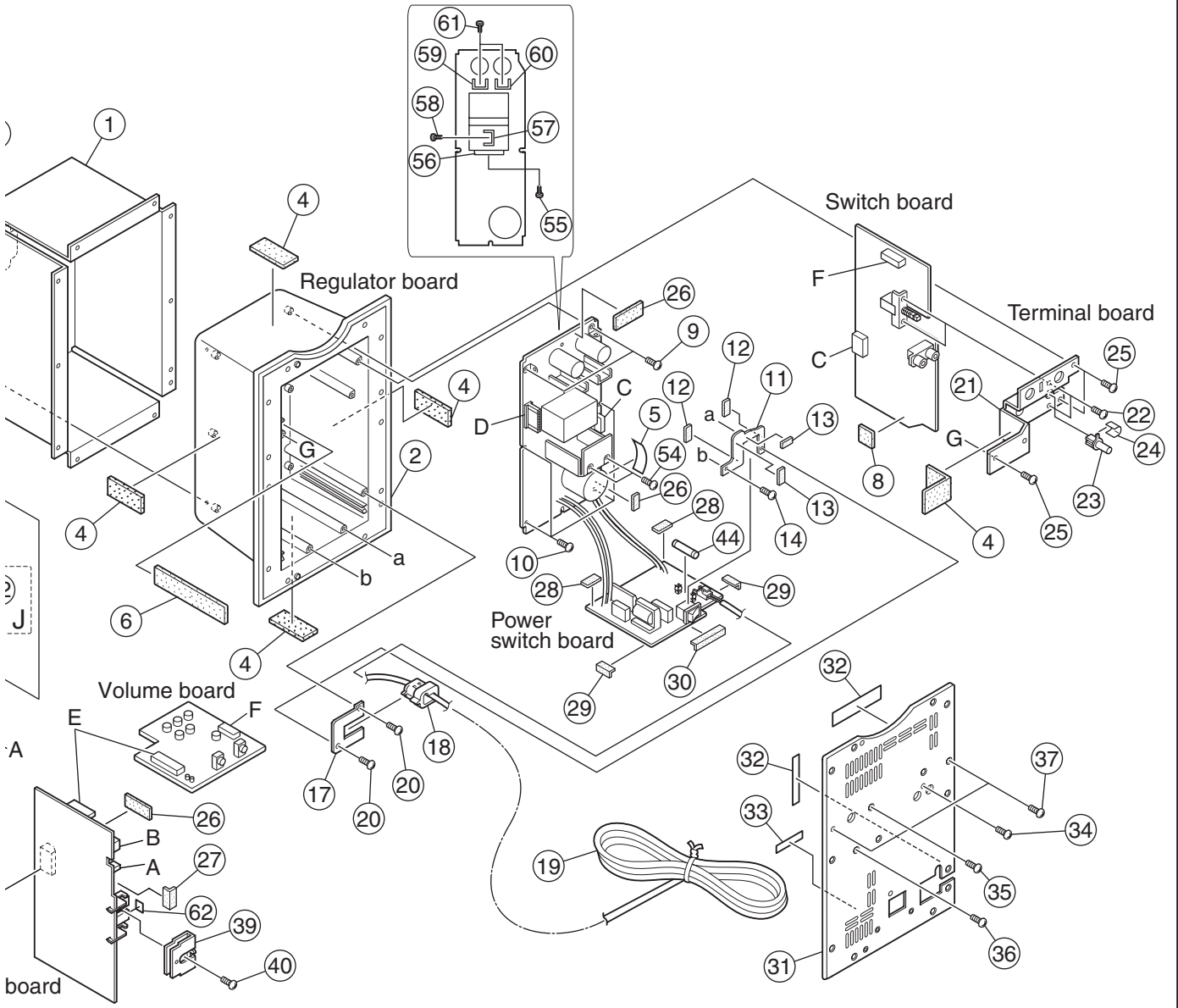
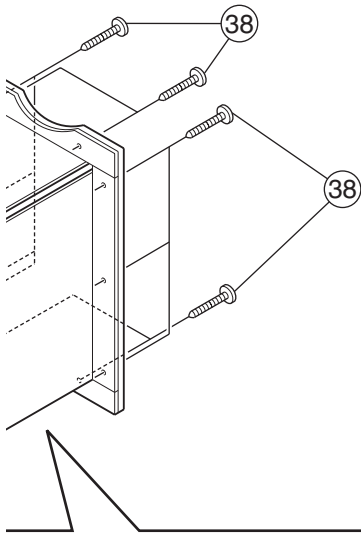
- Contents -

Exploded view of general assembly and parts list (Block No.M1)	3- 2
Electrical parts list (Block No.01)	3- 6
Packing materials and accessories parts list (Block No.M3)	3-10

Exploded view of general assembly and parts list

Block No. **M 1 M M**





General Assembly

Block No. [M][1][M][M]

△	Symbol No.	Part No.	Part Name	Description	Local
	1	LV21341-002A	SHIELD		DWF10J
	1	LV21341-001A	SHIELD		DWF10A,DWF10E,DWF10UF,DWF10UJ,DWF10UP,DWF10US,DWF10UT,DWF10UX
	2	LV10709-002A	COVER		
	3	LV30225-0R9A	SPACER		
	4	LV30225-0S1A	SPACER	(x5)	
	5	LV30225-079A	SPACER		
	6	LV30225-0E4A	SPACER		
	7	LV30225-0R8A	SPACER		
	8	LV30225-044A	SPACER		
	9	QYSBSG3016E	TAP SCREW	M3 x 16mm(x2)	
	10	QYSBSF3008Z	TAP SCREW	M3 x 8mm(x4)	
	11	LV43179-002A	BKT(SW)		
	12	LV30225-0H6A	SPACER	(x2)	
	13	LV30225-0H7A	SPACER	(x2)	
	14	QYSBSF2612M	TAP SCREW	M2.6 x 12mm	
	15	LV41148-002A	CORD COVER		
	16	QYSBSF4012Z	TAP SCREW	M4 x 12mm(x2)	
	17	LV43178-001A	BKT(CORD)		
△	18	QZW0033-001	STRAIN RELIEF		
△	19	QMPG150-244-JC	POWER CORD(EU)	2.44m BLACK	DWF10A
△	19	QMPD280-200-JC	POWER CORD(EU)	2m BLACK	DWF10J
△	19	QMPR480-200-JC	POWER CORD(EU)	2m BLACK	DWF10UF
△	19	QMPR310-200-JC	POWER CORD(EU)	2m BLACK	DWF10UP
△	19	QMPK190-200-JC	POWER CORD(EU)	2m BLACK	DWF10E,DWF10UJ,DWF10US
△	19	QMPR600-200-JD	POWER CORD(EU)	2m BLACK	DWF10UT
△	19	QMPR270-200-JD	POWER CORD(EU)	2m BLACK	DWF10UX
	20	QYSBSF2612M	TAP SCREW	M2.6 x 12mm(x2)	
	21	LV33804-002A	BKT(KNOB)		
	22	QYSBST3006Z	TAP SCREW	M3 x 6mm(x2)	
	23	E407321-002SM	PUSH BUTTON		
	24	LV30225-0H5A	SPACER		
	25	QYSBSF2612M	TAP SCREW	M2.6 x 12mm(x3)	
	26	LV30225-0H5A	SPACER	(x3)	
	27	LV30225-0E5A	SPACER		
	28	LV30225-0E5A	SPACER	(x2)	
	29	LV30225-0A4A	SPACER	(x2)	
	30	LV30225-074A	SPECER		
	31	LV21342-020A	BACK PANEL		DWF10A
	31	LV21342-025A	BACK PANEL		DWF10E
	31	LV21342-023A	BACK PANEL		DWF10J
	31	LV21342-021A	BACK PANEL		DWF10UF
	31	LV21342-024A	BACK PANEL		DWF10UJ
	31	LV21342-019A	BACK PANEL		DWF10UP
	31	LV21342-018A	BACK PANEL		DWF10US,DWF10UT
	31	LV21342-022A	BACK PANEL		DWF10UX
	32	LV30225-0H4A	SPACER	(x2)	
	33	LV30225-0H5A	SPACER		
	34	QYSBSGY3008E	TAP SCREW	M3 x 8mm	
	35	QYSBSGY3008E	TAP SCREW	M3 x 8mm	
	36	QYSBSGY3008E	TAP SCREW	M3 x 8mm	
	37	QYSBSGY3008E	TAP SCREW	M3 x 8mm(x2)	
	38	QYSDSA4020M	TAP SCREW	M4 x 20mm(x11)	
△	39	LV33803-001A	HEAT SINK		
	40	QYSBSG3012Z	TAP SCREW	M3 x 12mm	
	41	LV30225-0G7A	SPACER	(x2)	
	42	LV30225-0G4A	SPACER		
	43	LV43211-001A	SPACER		
△	44	QMF51E2-2R0-J1	FUSE	2A AC250V	DWF10A,DWF10E
△	44	QMF51N2-3R0-J1	FUSE	3A AC250V	DWF10J
△	44	QMF51E2-2R5-J1	FUSE	2.5A AC250V	DWF10UF,DWF10UP
△	44	QMF51E2-3R15-J1	FUSE	3.15A AC250V	DWF10UJ,DWF10US,DWF10UT,DWF10UX
	45	WJJ0098-001A	E-SI C WIRE C-C		
	46	WJJ0390-001A	E-SI C WIRE C-C		DWF10J
	46	WJN0095-001A	E-SH C WIRE C-C		DWF10A,DWF10E,DWF10UF,DWF10UJ,DWF10UP,DWF10US,DWF10UT,DWF10UX
	47	CR160063-01	CONE SPK		
	48	7001842004	SCREW	(x6)	
	49	9916012101	ORNAMENT		
	50	9916012201	NET ASSY		
	51	5600006901	RUBBER FOOT	(x4)	
	52	QQR0919-001	FERRITE CORE	K 5003	DWF10J
	53	LV43835-001A	EMC LABEL		DWF10J
	54	QYSBSGY3008M	TAP SCREW	M3 x 8mm(x2)	

△	Symbol No.	Part No.	Part Name	Description	Local
	55	QYSBSG3010Z	TAP SCREW	M3 x 10mm	
△	56	LV33802-001A	HEAT SINK1	HS 951	
	57	E70306-001	HEAT SINK	HS 954	
	58	QYSBSG3008Z	TAP SCREW	M3 x 8mm	
	59	E70306-001	HEAT SINK	HS 952	
	60	E70306-001	HEAT SINK	HS 953	
	61	QYSBSG3008Z	TAP SCREW	M3 x 8mm(x2)	
	62	VYSH101-034	SPACER		

Electrical parts list

Main board

Block No. [0][1]

△ Symbol No.	Part No.	Part Name	Description	Local
IC101	HA17558AF-X	IC		
IC102	HA17558AF-X	IC		
IC103	HA17558AF-X	IC		
IC104	HA17558AF-X	IC		
IC501	HA17558AF-X	IC		
IC502	NJM311M-XE	IC		
IC503	TC74HC00AF-W	IC		
IC504	TC74HC14AF-X	IC		
IC505	BU4584BF-X	IC		
IC506	IR2113S-X	GATE DRIVER		
IC571	TC74HC14AF-X	IC		
IC591	NJM78L05A-T	IC		
IC592	AN79L05-T	IC		
△ IC951	STR-F6656	IC		DWF1 0J DWF1 0A,D WF10 E,DW F10U F,DW F10UJ ,DWF 10UP, DWF1 0US,D WF10 UT,D WF10 UX
Q1001	2SC2412K/RS/-X	TRANSISTOR		
Q1002	2SC2412K/RS/-X	TRANSISTOR		
Q1003	2SC2412K/RS/-X	TRANSISTOR		
Q1004	2SA1037AK/RS/-X	TRANSISTOR		
Q1006	2SA1037AK/RS/-X	TRANSISTOR		
Q1007	2SC2412K/RS/-X	TRANSISTOR		
Q5001	2SA1037AK/RS/-X	TRANSISTOR		
Q5002	2SC2412K/RS/-X	TRANSISTOR		
Q5003	2SA1037AK/RS/-X	TRANSISTOR		
Q5004	2SC4452/3-4/-X	TRANSISTOR		
Q5005	2SA1514K/RS/-X	TRANSISTOR		
Q5006	IRFI540N	FET		
Q5007	IRFI540N	FET		
Q5706	2SC2412K/RS/-X	TRANSISTOR		
Q5707	2SA1037AK/RS/-X	TRANSISTOR		
Q5708	KRC104S-X	TRANSISTOR		
Q5709	2SC2412K/RS/-X	TRANSISTOR		
Q5710	2SA1037AK/RS/-X	TRANSISTOR		
Q5711	2SC2412K/RS/-X	TRANSISTOR		
Q5712	KRA104S-X	DIGI TRANSISTOR		
Q5713	2SK303/3-4/-X	FET		
Q5714	DTC115EKA-X	DIGI TRANSISTOR		
Q5715	KRA104S-X	DIGI TRANSISTOR		
Q5716	KRC104S-X	TRANSISTOR		
Q5717	DTC115EKA-X	DIGI TRANSISTOR		
Q5718	DTC115EKA-X	DIGI TRANSISTOR		
Q5719	KRC104S-X	TRANSISTOR		
Q5720	KRA104S-X	DIGI TRANSISTOR		
Q5721	KRC104S-X	TRANSISTOR		
Q5722	DTC144TKA-X	TRANSISTOR		
Q5723	2SK303/3-4/-X	FET		
△ Q5901	2SD2395/EF/	TRANSTRANSISTOR		
Q5902	2SA1037AK/RS/-X	TRANSISTOR		
Q5903	2SC2412K/RS/-X	TRANSISTOR		
Q5904	2SC2412K/RS/-X	TRANSISTOR		
Q5905	2SA1037AK/RS/-X	TRANSISTOR		
Q9504	2SC2412K/RS/-X	TRANSISTOR		
Q9508	2SA1514K/RS/-X	TRANSISTOR		
Q9509	2SA1514K/RS/-X	TRANSISTOR		
Q9510	2SC2412K/RS/-X	TRANSISTOR		
D1001	1SS133-T2	DIODE		
D1002	1SS133-T2	DIODE		

△ Symbol No.	Part No.	Part Name	Description	Local
D1003	1SS133-T2	DIODE		
D5001	1SS133-T2	DIODE		
D5002	1SS133-T2	DIODE		
D5003	1SS133-T2	DIODE		
D5004	1SS133-T2	DIODE		
D5005	1SS133-T2	DIODE		
D5006	1SS133-T2	DIODE		
D5007	MTZJ16B-T2	Z DIODE		
D5008	M1FL20U-X	FR DIODE		
D5009	MTZJ18B-T2	Z DIODE		
D5010	MTZJ18B-T2	Z DIODE		
D5011	M1FL20U-X	FR DIODE		
D5012	M1FL20U-X	FR DIODE		
D5013	1SS355-X	SI DIODE		
D5703	1SS133-T2	DIODE		
D5704	1SS355-X	SI DIODE		
D5705	1SS355-X	SI DIODE		
D5706	1SS355-X	SI DIODE		
D5707	1SS355-X	SI DIODE		
D5708	MA3200/H/-X	Z DIODE		
D5709	MA3200/H/-X	Z DIODE		
D5710	1SS355-X	SI DIODE		
D5711	1SS355-X	SI DIODE		
D5712	MA3300/L/-X	Z DIODE		
D5713	MA3300/L/-X	Z DIODE		
D5714	1SS355-X	SI DIODE		
D5715	1SS355-X	SI DIODE		
D5716	1SS133-T2	DIODE		
D5717	1SS355-X	SI DIODE		
D5718	1SS355-X	SI DIODE		
D5901	MTZJ16B-T2	Z DIODE		
D5902	MTZJ18B-T2	Z DIODE		
D5903	MTZJ15A-T2	Z DIODE		
D5904	MTZJ15A-T2	Z DIODE		
D5905	MTZJ6.8B-T2	Z DIODE		
D5906	MTZJ6.8B-T2	Z DIODE		
D5907	MTZJ16B-T2	Z DIODE		
D5908	MTZJ16B-T2	Z DIODE		
D5909	RB160L-40-X	SB DIODE		
D5910	RB160L-40-X	SB DIODE		
D5911	1SS355-X	SI DIODE		
D5912	1SS355-X	SI DIODE		
△ D9001	RBV-606	BRIDGE DIODE		
D9501	AW04-T2	SB DIODE		
D9502	AG01Z-T2	DIODE		
D9503	AG01Z-T2	DIODE		
D9504	MTZJ20B-T2	Z DIODE		
D9505	MTZJ20B-T2	Z DIODE		
D9506	AG01Z-T2	DIODE		
D9507	SARS03	SI DIODE		
△ D9509	FML-G22S	SI DIODE		
△ D9510	FML-G22S	SI DIODE		
D9511	MTZJ15A-T2	Z DIODE		
D9512	MTZJ15A-T2	Z DIODE		
△ PC951	PC123Y22FZ	PHOTO COUPLER		
C1001	NCB31HK-102X	C CAPACITOR	1000pF 50V K	
C1002	NCB31HK-102X	C CAPACITOR	1000pF 50V K	
C1003	QETN1HM-106Z	E CAPACITOR	10uF 50V M	
C1004	QETN1HM-106Z	E CAPACITOR	10uF 50V M	
C1005	NCB31HK-103X	C CAPACITOR	0.01uF 50V K	
C1008	QERF1CM-107Z	E CAPACITOR	100uF 16V M	
C1009	QERF1CM-107Z	E CAPACITOR	100uF 16V M	
C1010	QFVF1HJ-154Z	MF CAPACITOR	0.15uF 50V J	
C1011	QFVF1HJ-154Z	MF CAPACITOR	0.15uF 50V J	
C1012	QEK1CM-107Z	E CAPACITOR	100uF 16V M	
C1013	QEK1CM-107Z	E CAPACITOR	100uF 16V M	
C1014	QFN31HJ-823Z	M CAPACITOR	0.082uF 50V J	
C1015	QFVF1HJ-224Z	MF CAPACITOR	0.22uF 50V J	
C1016	QETN1HM-106Z	E CAPACITOR	10uF 50V M	
C1020	NCB31HK-222X	C CAPACITOR	2200pF 50V K	
C1021	QEK1CM-107Z	E CAPACITOR	100uF 16V M	
C1022	QEK1CM-107Z	E CAPACITOR	100uF 16V M	
C1023	QERF1HM-105Z	E CAPACITOR	1uF 50V M	
C1027	NCB31HK-103X	C CAPACITOR	0.01uF 50V K	

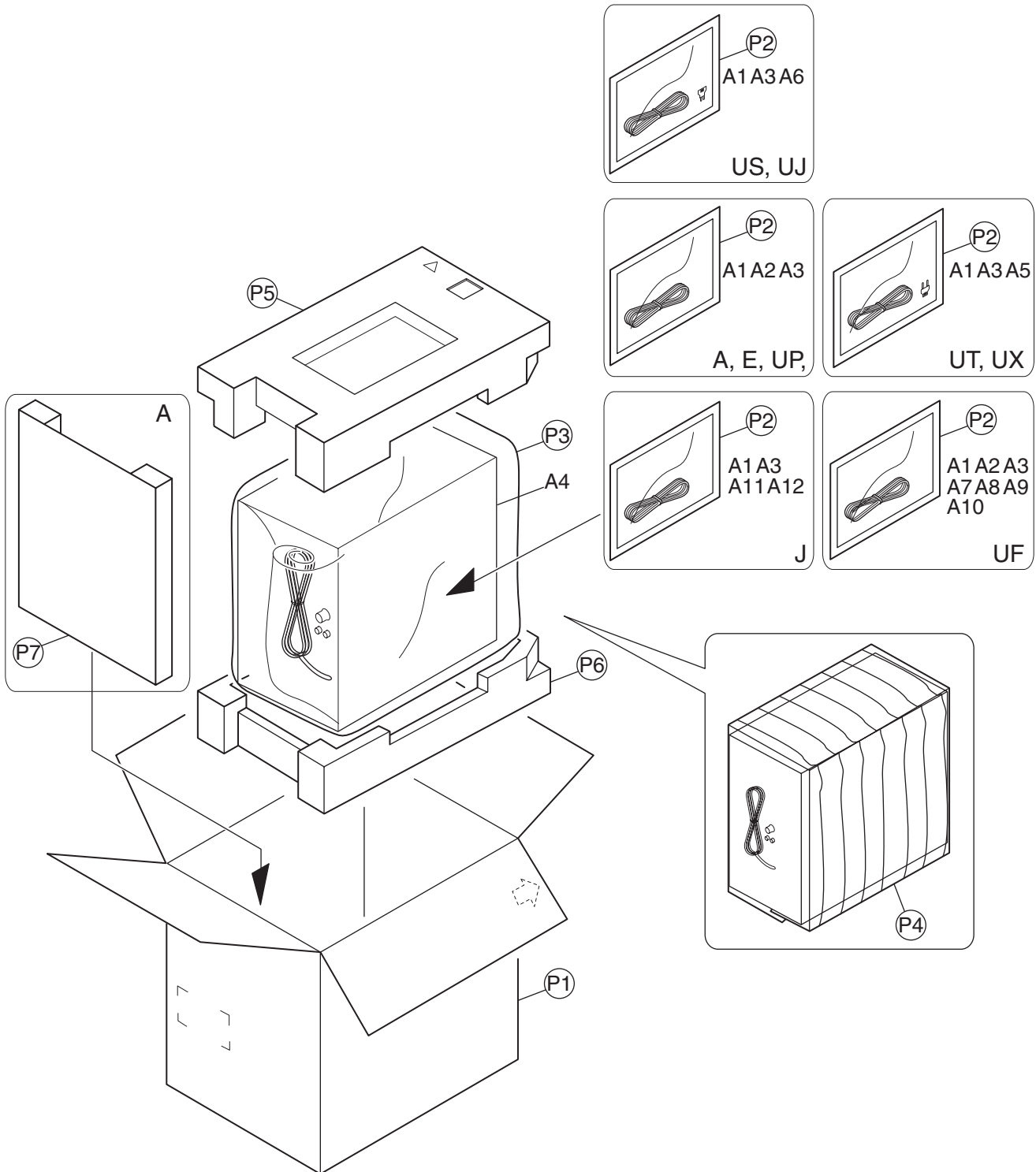
△ Symbol No.	Part No.	Part Name	Description	Local	△ Symbol No.	Part No.	Part Name	Description	Local
C1028	QETN1HM-475Z	E CAPACITOR	4.7uF 50V M						DWF1
C1029	NCS31HJ-470X	C CAPACITOR	47pF 50V J						0UF,D
C1030	QEK1HM-475Z	E CAPACITOR	4.7uF 50V M						WF10
C1031	NCB31HK-103X	C CAPACITOR	0.01uF 50V K						UJ,D
C1032	QETN1CM-477Z	E CAPACITOR	470uF 16V M						WF10
C1033	QEK1CM-106Z	E CAPACITOR	10uF 16V M		C5902	QFG32AJ-223Z	PP CAPACITOR	0.022uF 100V J	UP,D
C1034	QEK1CM-106Z	E CAPACITOR	10uF 16V M						WF10
C5001	QERF1CM-107Z	E CAPACITOR	100uF 16V M						US,D
C5002	QERF1CM-107Z	E CAPACITOR	100uF 16V M						WF10
C5003	QERF1CM-107Z	E CAPACITOR	100uF 16V M						UT,D
C5004	QERF1CM-107Z	E CAPACITOR	100uF 16V M						WF10
C5005	QERF1CM-107Z	E CAPACITOR	100uF 16V M		C5903	QEHR1HM-227Z	E CAPACITOR	220uF 50V M	UX
C5006	QERF1CM-107Z	E CAPACITOR	100uF 16V M		C5904	QEHR1HM-227Z	E CAPACITOR	220uF 50V M	
C5007	NCS31HJ-471X	C CAPACITOR	470pF 50V J		C5905	QER61EM-475Z	E CAPACITOR	4.7uF 25V M	
C5008	NCB31HK-223X	C CAPACITOR	0.022uF 50V K		C5906	QER61EM-476Z	E CAPACITOR	47uF 25V M	
C5009	NCB31EK-104X	C CAPACITOR	0.1uF 25V K		C5907	NCS31HJ-221X	C CAPACITOR	220pF 50V J	
C5010	NCB31EK-104X	C CAPACITOR	0.1uF 25V K		C5908	NCS31HJ-221X	C CAPACITOR	220pF 50V J	
C5011	QCBB1HK-104Y	C CAPACITOR	0.1uF 50V K		C5909	QEHR1HM-107Z	E CAPACITOR	100uF 50V M	
C5012	NCB31EK-104X	C CAPACITOR	0.1uF 25V K		C5910	QEHR1HM-107Z	E CAPACITOR	100uF 50V M	
C5013	QCBB1HK-104Y	C CAPACITOR	0.1uF 50V K		C5911	QEHR1EM-107Z	E CAPACITOR	100uF 25V M	
C5014	NCS31HJ-681X	C CAPACITOR	680pF 50V J		C5912	QEHR1EM-107Z	E CAPACITOR	100uF 25V M	
C5015	NCS31HJ-470X	C CAPACITOR	47pF 50V J		C5913	QERF1CM-106Z	E CAPACITOR	10uF 16V M	
C5016	NCS31HJ-560X	C CAPACITOR	56pF 50V J		C5914	QERF1CM-106Z	E CAPACITOR	10uF 16V M	
C5017	NCS31HJ-560X	C CAPACITOR	56pF 50V J		C5915	QERF1CM-106Z	E CAPACITOR	10uF 16V M	
C5018	NCB11EK-224X	C CAPACITOR	0.22uF 25V K		C5916	QERF1CM-106Z	E CAPACITOR	10uF 16V M	
C5019	NCB11EK-684X	C CAPACITOR	0.68uF 25V K						DWF1
C5020	QER61HM-106Z	E CAPACITOR	10uF 50V M		C5917	NCB31HK-183X	C CAPACITOR	0.018uF 50V K	0A,D
C5021	QFV72AJ-224Z	MF CAPACITOR	0.22uF 100V J						WF10
C5022	QFG32AJ-392Z	PP CAPACITOR	3900pF 100V J						E
C5023	QENC1HM-225Z	BP E CAPACITOR	2.2uF 50V M						DWF1
C5024	NCB31CK-823X	C CAPACITOR	0.082uF 16V K						0J,D
C5025	NCF21HZ-104X	C CAPACITOR	0.1uF 50V Z						WF10
C5026	QETN2AM-475Z	E CAPACITOR	4.7uF 100V M						UF,D
									WF10
C5027	NCS31HJ-271X	C CAPACITOR	270pF 50V J	DWF1 0J,D WF10 UT	C5917	NCB21HK-104X	C CAPACITOR	0.1uF 50V K	UJ,D
									WF10
C5028	NCS31HJ-271X	C CAPACITOR	270pF 50V J	DWF1 0J,D WF10 UT					UP,D
									WF10
C5702	QETN1VM-227Z	E CAPACITOR	220uF 35V M						US,D
C5703	QER61CM-476Z	E CAPACITOR	47uF 16V M						WF10
C5704	NCB31HK-103X	C CAPACITOR	0.01uF 50V K		C5918	NCB31HK-183X	C CAPACITOR	0.018uF 50V K	UX
C5705	NCB31HK-103X	C CAPACITOR	0.01uF 50V K						DWF1
C5706	NCB11AK-335X	C CAPACITOR	3.3uF 10V K						0A,D
C5707	NCB31EK-104X	C CAPACITOR	0.1uF 25V K						WF10
C5708	NCB11AK-335X	C CAPACITOR	3.3uF 10V K						E
C5709	NCB21AK-225X	C CAPACITOR	2.2uF 10V K						DWF1
C5710	NCB21AK-225X	C CAPACITOR	2.2uF 10V K						0J,D
C5711	NCB11EK-224X	C CAPACITOR	0.22uF 25V K						WF10
					C5918	NCB21HK-104X	C CAPACITOR	0.1uF 50V K	UF,D
C5901	QFV72AJ-103Z	MF CAPACITOR	0.01uF 100V J	DWF1 0A,D WF10 E,DW F10J					WF10
									UJ,D
									WF10
C5901	QFG32AJ-223Z	PP CAPACITOR	0.022uF 100V J	DWF1 0UF,D WF10 UJ,D WF10 UP,D WF10 US,D WF10 UT,D WF10 UX	△ C9001	QFZ9075-224	MPP CAPACITOR	0.22uF AC275V M	
					△ C9002	QFZ9075-104	MPP CAPACITOR	0.1uF AC275V M	
					△ C9003	QCZ9079-102	C CAPACITOR	1000pF AC250V M	
					△ C9004	QCZ9079-102	C CAPACITOR	1000pF AC250V M	
					△ C9005	QFZ9075-103	MPP CAPACITOR	0.01uF AC275V M	
					△ C9501	QEZ0602-477	E CAPACITOR	470uF	DWF1
									0J
									DWF1
C5902	QFV72AJ-103Z	MF CAPACITOR	0.01uF 100V J	DWF1 0A,D WF10 E,DW F10J	△ C9501	QEZ0603-227	E CAPACITOR	220uF	0A,D
									WF10
									E,DW
									F10U
									F,DW
									F10U
									P
									DWF1
									0UJ,D
									WF10
					△ C9501	QEZ0603-477	E CAPACITOR	470uF	US,D
									WF10
									UT,D
									WF10
									UX

△ Symbol No.	Part No.	Part Name	Description	Local	△ Symbol No.	Part No.	Part Name	Description	Local
C9502	QCZ0366-102	C CAPACITOR	1000pF		R1061	NRSA63J-105X	MG RESISTOR	1MΩ 1/16W J	
C9503	NCB31HK-471X	C CAPACITOR	470pF 50V K		R1062	QRE141J-470Y	C RESISTOR	47Ω 1/4W J	
C9504	QETN1VM-107Z	E CAPACITOR	100uF 35V M		R1064	QRE141J-470Y	C RESISTOR	47Ω 1/4W J	
C9505	NCB31HK-471X	C CAPACITOR	470pF 50V K		R1065	QRE141J-101Y	C RESISTOR	100Ω 1/4W J	
C9506	QFKB2JK-103	MM CAPACITOR	0.01uF 630V K		R1066	NRSA63J-473X	MG RESISTOR	47kΩ 1/16W J	
C9507	QCZ0213-472	C CAPACITOR	4700pF 1kV K		R1067	NRSA63J-560X	MG RESISTOR	56Ω 1/16W J	
C9508	QCZ0213-472	C CAPACITOR	4700pF 1kV K		R1068	QRE141J-101Y	C RESISTOR	100Ω 1/4W J	
				DWF1	R5001	NRSA63J-153X	MG RESISTOR	15kΩ 1/16W J	
				0A,D	R5002	NRSA63J-103X	MG RESISTOR	10kΩ 1/16W J	
C9509	QFG32AJ-223Z	PP CAPACITOR	0.022uF 100V J	WF10	R5003	NRSA63J-103X	MG RESISTOR	10kΩ 1/16W J	
				E,DW	R5004	NRSA63J-103X	MG RESISTOR	10kΩ 1/16W J	
				F10J	R5005	NRSA63J-103X	MG RESISTOR	10kΩ 1/16W J	
				DWF1	R5006	NRSA63J-752X	MG RESISTOR	7.5kΩ 1/16W J	
				0U,F,D	R5007	NRSA63J-133X	MG RESISTOR	13kΩ 1/16W J	
				WF10	R5008	NRSA63J-103X	MG RESISTOR	10kΩ 1/16W J	
				UJ,D	R5009	NRSA63J-103X	MG RESISTOR	10kΩ 1/16W J	
C9509	QFV72AJ-104Z	MF CAPACITOR	0.1uF 100V J	WF10	R5010	NRSA63J-103X	MG RESISTOR	10kΩ 1/16W J	
				UP,D	R5011	NRSA63J-103X	MG RESISTOR	10kΩ 1/16W J	
				WF10	R5012	NRSA63J-103X	MG RESISTOR	10kΩ 1/16W J	
				US,D	R5013	NRSA63J-472X	MG RESISTOR	4.7kΩ 1/16W J	
				WF10	R5014	NRSA63J-472X	MG RESISTOR	4.7kΩ 1/16W J	
				UT,D	R5015	NRSA63J-222X	MG RESISTOR	2.2kΩ 1/16W J	
				WF10	R5016	QRE141J-222Y	C RESISTOR	2.2kΩ 1/4W J	
				UX	R5017	NRSA63J-102X	MG RESISTOR	1kΩ 1/16W J	
				DWF1	R5018	NRSA63J-102X	MG RESISTOR	1kΩ 1/16W J	
C9510	QFG32AJ-223Z	PP CAPACITOR	0.022uF 100V J	0A,D	R5019	NRSA63J-4R7X	MG RESISTOR	4.7Ω 1/16W J	
				WF10	R5020	NRSA63J-4R7X	MG RESISTOR	4.7Ω 1/16W J	
				E,DW	R5021	NRSA63J-4R7X	MG RESISTOR	4.7Ω 1/16W J	
				F10J	R5022	NRSA63J-4R7X	MG RESISTOR	4.7Ω 1/16W J	
				DWF1	R5023	NRSA63J-101X	MG RESISTOR	100Ω 1/16W J	
				0U,F,D	R5024	NRSA63J-0R0X	MG RESISTOR	0Ω 1/16W J	
				WF10	R5025	NRSA63J-4R7X	MG RESISTOR	4.7Ω 1/16W J	
				UJ,D	R5026	NRSA63J-4R7X	MG RESISTOR	4.7Ω 1/16W J	
				WF10	R5027	NRSA63J-2R2X	MG RESISTOR	2.2Ω 1/16W J	
C9510	QFV72AJ-104Z	MF CAPACITOR	0.1uF 100V J	UP,D	R5028	NRSA63J-102X	MG RESISTOR	1kΩ 1/16W J	
				WF10	R5029	NRSA63J-682X	MG RESISTOR	6.8kΩ 1/16W J	
				US,D	R5030	NRSA63J-682X	MG RESISTOR	6.8kΩ 1/16W J	
				WF10	R5031	NRSA63J-472X	MG RESISTOR	4.7kΩ 1/16W J	
				UT,D	R5032	NRSA63J-222X	MG RESISTOR	2.2kΩ 1/16W J	
				WF10	R5033	NRSA63J-2R2X	MG RESISTOR	2.2Ω 1/16W J	
				UX	R5034	NRSA63J-2R2X	MG RESISTOR	2.2Ω 1/16W J	
C9511	QEHQ1HM-228	E CAPACITOR	2200uF 50V M		R5035	NRSA63J-2R2X	MG RESISTOR	2.2Ω 1/16W J	
C9512	QEHQ1HM-228	E CAPACITOR	2200uF 50V M		R5036	NRSA63J-103X	MG RESISTOR	10kΩ 1/16W J	
C9513	NCB31HK-103X	C CAPACITOR	0.01uF 50V K		R5037	NRSA63J-123X	MG RESISTOR	12kΩ 1/16W J	
C9514	NCB31HK-103X	C CAPACITOR	0.01uF 50V K		R5038	NRSA63J-222X	MG RESISTOR	2.2kΩ 1/16W J	
△ C9515	QCZ9079-332	C CAPACITOR	3300pF AC250V M		R5039	NRSA63J-103X	MG RESISTOR	10kΩ 1/16W J	
					R5040	NRSA63J-102X	MG RESISTOR	1kΩ 1/16W J	
R1001	NRSA63J-474X	MG RESISTOR	470kΩ 1/16W J		R5041	NRSA63J-562X	MG RESISTOR	5.6kΩ 1/16W J	
R1002	NRSA63J-474X	MG RESISTOR	470kΩ 1/16W J		R5042	NRSA63J-102X	MG RESISTOR	1kΩ 1/16W J	
R1003	NRSA63J-563X	MG RESISTOR	56kΩ 1/16W J		R5043	NRSA63J-332X	MG RESISTOR	3.3kΩ 1/16W J	
R1004	NRSA63J-563X	MG RESISTOR	56kΩ 1/16W J		R5044	NRSA63J-561X	MG RESISTOR	560Ω 1/16W J	
R1005	NRSA63J-223X	MG RESISTOR	22kΩ 1/16W J		R5045	NRSA63J-822X	MG RESISTOR	8.2kΩ 1/16W J	
R1015	QRE141J-470Y	C RESISTOR	47Ω 1/4W J		R5046	NRSA63J-822X	MG RESISTOR	8.2kΩ 1/16W J	
R1016	NRSA63J-153X	MG RESISTOR	15kΩ 1/16W J		R5048	NRSA63J-103X	MG RESISTOR	10kΩ 1/16W J	
R1017	QRE141J-470Y	C RESISTOR	47Ω 1/4W J		△ R5049	QRZ9038-220X	FUSI RESISTOR	22Ω	
R1020	NRSA63J-392X	MG RESISTOR	3.9kΩ 1/16W J		△ R5050	QRZ9015-2R2X	FUSI RESISTOR	2.2Ω	
R1021	NRSA63J-472X	MG RESISTOR	4.7kΩ 1/16W J		△ R5051	QRZ9015-100X	FUSI RESISTOR	10Ω	
R1022	NRSA63J-123X	MG RESISTOR	12kΩ 1/16W J		△ R5052	QRZ9015-220X	FUSI RESISTOR	22Ω	
R1023	NRSA63J-683X	MG RESISTOR	68kΩ 1/16W J		R5053	NRSA63J-105X	MG RESISTOR	1MΩ 1/16W J	
R1025	QRE141J-470Y	C RESISTOR	47Ω 1/4W J		R5054	NRSA63J-105X	MG RESISTOR	1MΩ 1/16W J	
R1028	QRE141J-470Y	C RESISTOR	47Ω 1/4W J		R5055	QRT01DJ-6R8X	MF RESISTOR	6.8Ω 1W J	
R1030	NRSA63J-752X	MG RESISTOR	7.5kΩ 1/16W J		R5056	QRT01DJ-6R8X	MF RESISTOR	6.8Ω 1W J	
R1031	NRSA63J-752X	MG RESISTOR	7.5kΩ 1/16W J		R5057	NRSA63J-223X	MG RESISTOR	22kΩ 1/16W J	
R1032	NRSA63J-684X	MG RESISTOR	680kΩ 1/16W J		R5058	NRSA63J-184X	MG RESISTOR	180kΩ 1/16W J	
R1039	NRSA63J-223X	MG RESISTOR	22kΩ 1/16W J		R5059	NRSA63J-113X	MG RESISTOR	11kΩ 1/16W J	
R1040	NRSA63J-683X	MG RESISTOR	68kΩ 1/16W J						
R1041	QRE141J-470Y	C RESISTOR	47Ω 1/4W J		R5060	NRSA02J-150X	MG RESISTOR	15Ω 1/10W J	DWF1
R1044	QRE141J-470Y	C RESISTOR	47Ω 1/4W J						0J,D
R1046	NRSA63J-473X	MG RESISTOR	47kΩ 1/16W J						WF10
R1047	NRSA63J-104X	MG RESISTOR	100kΩ 1/16W J						UT
R1048	NRSA63J-102X	MG RESISTOR	1kΩ 1/16W J						DWF1
R1049	NRSA63J-222X	MG RESISTOR	2.2kΩ 1/16W J		R5061	NRSA02J-150X	MG RESISTOR	15Ω 1/10W J	0J,D
R1050	NRSA63J-473X	MG RESISTOR	47kΩ 1/16W J						WF10
R1051	NRSA63J-105X	MG RESISTOR	1MΩ 1/16W J						UT
R1052	NRSA63J-122X	MG RESISTOR	1.2kΩ 1/16W J						DWF1
R1053	NRSA63J-472X	MG RESISTOR	4.7kΩ 1/16W J		R5062	NRSA02J-150X	MG RESISTOR	15Ω 1/10W J	0J,D
R1054	NRSA63J-560X	MG RESISTOR	56Ω 1/16W J						WF10
R1055	NRSA63J-152X	MG RESISTOR	1.5kΩ 1/16W J						UT
R1056	NRSA63J-103X	MG RESISTOR	10kΩ 1/16W J						
R1057	NRSA63J-154X	MG RESISTOR	150kΩ 1/16W J						
R1059	NRSA63J-104X	MG RESISTOR	100kΩ 1/16W J						
R1060	NRSA63J-224X	MG RESISTOR	220kΩ 1/16W J						

△ Symbol No.	Part No.	Part Name	Description	Local	△ Symbol No.	Part No.	Part Name	Description	Local
R5063	NRSA02J-150X	MG RESISTOR	15Ω 1/10W J	DWF1 0J,D WF10 UT	R9529	QRE141J-753Y	C RESISTOR	75kΩ 1/4W J	
					VR501	QVP0008-502Z	TRIM RESISTOR	5kΩ	
					VR502	QVP0008-203Z	TRIM RESISTOR	20kΩ	
R5701	QRE141J-102Y	C RESISTOR	1kΩ 1/4W J		△ L5001	QQR1361-001	TOROIDAL COIL		
R5702	NRSA63J-103X	MG RESISTOR	10kΩ 1/16W J		L5901	NQL114K-471X	COIL	470uH K	
R5713	NRSA63J-153X	MG RESISTOR	15kΩ 1/16W J		L5902	NQL114K-471X	COIL	470uH K	
R5714	NRSA63J-473X	MG RESISTOR	47kΩ 1/16W J		L5903	NQL114K-471X	COIL	470uH K	
R5715	NRSA63J-472X	MG RESISTOR	4.7kΩ 1/16W J		L5904	NQL114K-471X	COIL	470uH K	
R5716	NRSA63J-224X	MG RESISTOR	220kΩ 1/16W J		△ T9501	QQS0172-001	SW TRANSF		
R5717	NRSA63J-104X	MG RESISTOR	100kΩ 1/16W J						
R5718	NRSA63J-473X	MG RESISTOR	47kΩ 1/16W J		BK501	LV33818-001A	BKT(FET)		
R5719	NRSA63J-473X	MG RESISTOR	47kΩ 1/16W J		CN101	QGB2016K1-08	CONNECTOR	B-B (1-8)	
R5720	NRSA63J-222X	MG RESISTOR	2.2kΩ 1/16W J		CN102	QGA2501C1-02	CONNECTOR	W-B (1-2)	
R5721	NRSA63J-473X	MG RESISTOR	47kΩ 1/16W J		CN103	QGB2016J1-05	CONNECTOR	B-B (1-5)	
R5722	NRSA63J-473X	MG RESISTOR	47kΩ 1/16W J		CN501	QGB2016J1-08	CONNECTOR	B-B (1-8)	
R5723	NRSA63J-224X	MG RESISTOR	220kΩ 1/16W J		CN502	QGB2510K1-10	CONNECTOR	B-B (1-10)	
R5724	NRSA63J-393X	MG RESISTOR	39kΩ 1/16W J		CN503	QGA3901C1-02	CONNECTOR	W-B (1-2)	
R5725	NRSA63J-683X	MG RESISTOR	68kΩ 1/16W J		CN504	QGB2016J1-11	CONNECTOR	B-B (1-11)	
R5726	NRSA63J-104X	MG RESISTOR	100kΩ 1/16W J		CN505	QGB2016K1-11	CONNECTOR	B-B (1-11)	
R5727	NRSA63J-104X	MG RESISTOR	100kΩ 1/16W J		△ CN901	QGA7901F2-02	CONNECTOR	W-B (1-2)	
R5728	NRSA63J-333X	MG RESISTOR	33kΩ 1/16W J		CN951	QGB2510J1-10	CONNECTOR	B-B (1-10)	
R5729	NRSA63J-683X	MG RESISTOR	68kΩ 1/16W J		CN952	QGB2016K1-05	CONNECTOR	B-B (1-5)	
R5730	NRSA63J-104X	MG RESISTOR	100kΩ 1/16W J		EP951	QNZ0136-001Z	EARTH PLATE		
R5731	NRSA63J-103X	MG RESISTOR	10kΩ 1/16W J		EP952	QNZ0136-001Z	EARTH PLATE		
R5732	NRSA63J-104X	MG RESISTOR	100kΩ 1/16W J		△ J1001	QNN0090-001	PIN JACK		
R5733	NRSA63J-103X	MG RESISTOR	10kΩ 1/16W J		K1001	NQR0129-003X	FERRITE BESDA		
R5734	NRSA63J-474X	MG RESISTOR	470kΩ 1/16W J		K5001	QQR1183-001Z	FERRITE BEADS		
R5735	NRSA63J-103X	MG RESISTOR	10kΩ 1/16W J		K5002	QQR1183-001Z	FERRITE BEADS		
R5736	NRSA63J-474X	MG RESISTOR	470kΩ 1/16W J		K9501	QQR0779-001Z	COIL		
R5737	NRSA63J-103X	MG RESISTOR	10kΩ 1/16W J		△ LF901	QQR1360-001	LINE FILTER		
R5738	NRSA63J-104X	MG RESISTOR	100kΩ 1/16W J		△ LF902	QQR1360-001	LINE FILTER		
R5739	NRSA63J-103X	MG RESISTOR	10kΩ 1/16W J		△ RY502	QSK0149-001	RELAY		
R5740	NRSA63J-473X	MG RESISTOR	47kΩ 1/16W J		△ S1001	QSW0834-001	PUSH SW		
R5741	NRSA63J-0R0X	MG RESISTOR	0Ω 1/16W J		△ S9001	QSW1001-001	POWER SW		
R5742	NRSA63J-2R2X	MG RESISTOR	2.2Ω 1/16W J		TH501	QAD0015-153Z	THERMISTOR	15kΩ	
R5743	NRSA63J-222X	MG RESISTOR	2.2kΩ 1/16W J		△ TH591	NAD0032-330X	P THERMISTOR	33Ω	
R5744	NRSA63J-391X	MG RESISTOR	390Ω 1/16W J		△ TH592	NAD0032-330X	P THERMISTOR	33Ω	
R5745	NRSA63J-223X	MG RESISTOR	22kΩ 1/16W J		△ TH593	NAD0032-330X	P THERMISTOR	33Ω	
R5746	NRSA63J-104X	MG RESISTOR	100kΩ 1/16W J		△ TH594	NAD0032-330X	P THERMISTOR	33Ω	
R5747	NRSA63J-104X	MG RESISTOR	100kΩ 1/16W J		△ TH901	QAD0143-5R1	THERMISTOR	5.1Ω	DWF1 0J
R5748	NRSA63J-104X	MG RESISTOR	100kΩ 1/16W J						DWF1 0A,D
R5749	NRSA63J-104X	MG RESISTOR	100kΩ 1/16W J						E,DW
R5750	NRSA63J-224X	MG RESISTOR	220kΩ 1/16W J						F,10U
△ R5901	QRZ9005-100X	FUSI RESISTOR	10Ω						F,DW
R5902	NRSA63J-682X	MG RESISTOR	6.8kΩ 1/16W J		△ TH901	QAD0141-6R0	THERMISTOR	6Ω	F,10UJ
R5905	NRSA63J-473X	MG RESISTOR	47kΩ 1/16W J						,DWF
R5906	NRSA63J-473X	MG RESISTOR	47kΩ 1/16W J						10UP,
R5909	QRE141J-102Y	C RESISTOR	1kΩ 1/4W J						DWF1
R5910	QRE141J-102Y	C RESISTOR	1kΩ 1/4W J						0U,S,D
R5911	NRSA63J-123X	MG RESISTOR	12kΩ 1/16W J						WF,10
R5912	NRSA63J-123X	MG RESISTOR	12kΩ 1/16W J						UT,D
R5913	NRSA63J-331X	MG RESISTOR	330Ω 1/16W J						WF10
R5914	NRSA63J-331X	MG RESISTOR	330Ω 1/16W J						UX
△ R5915	QRZ9038-220X	FUSI RESISTOR	22Ω		△ Z9001	QNG0003-001Z	FUSE CLIP		
△ R5916	QRZ9038-220X	FUSI RESISTOR	22Ω		△ Z9002	QNG0003-001Z	FUSE CLIP		
R9001	QRL027J-104	OMF RESISTOR	100kΩ 2W J						
△ R9002	QRZ9037-335	COMP RESISTOR	3.3MΩ 1/2W K						
R9501	QRT017J-R33	MF RESISTOR	0.33Ω 1W J						
R9502	QRT017J-R33	MF RESISTOR	0.33Ω 1W J						
△ R9503	QRZ9005-681X	FUSI RESISTOR	680Ω						
R9504	NRSA63J-332X	MG RESISTOR	3.3kΩ 1/16W J						
R9505	NRSA63J-222X	MG RESISTOR	2.2kΩ 1/16W J						
R9506	NRSA63J-103X	MG RESISTOR	10kΩ 1/16W J						
R9508	QRL01DJ-220X	OMF RESISTOR	22Ω 1W J						
R9510	QRE141J-753Y	C RESISTOR	75kΩ 1/4W J						
R9516	NRSA63J-133X	MG RESISTOR	13kΩ 1/16W J						
R9517	NRSA63J-103X	MG RESISTOR	10kΩ 1/16W J						
R9518	NRSA63J-103X	MG RESISTOR	10kΩ 1/16W J						
R9519	NRSA63J-103X	MG RESISTOR	10kΩ 1/16W J						
R9520	NRSA63J-133X	MG RESISTOR	13kΩ 1/16W J						
R9521	NRSA63J-103X	MG RESISTOR	10kΩ 1/16W J						
R9522	NRSA63J-103X	MG RESISTOR	10kΩ 1/16W J						
R9523	NRSA63J-102X	MG RESISTOR	1kΩ 1/16W J						
R9524	NRSA63J-472X	MG RESISTOR	4.7kΩ 1/16W J						
R9525	NRSA63J-102X	MG RESISTOR	1kΩ 1/16W J						
R9526	NRSA63J-103X	MG RESISTOR	10kΩ 1/16W J						
R9527	NRSA63J-222X	MG RESISTOR	2.2kΩ 1/16W J						
R9528	QRE141J-753Y	C RESISTOR	75kΩ 1/4W J						

Packing materials and accessories parts list

Block No. M 3 M M



Packing and Accessories

Block No. [M][3][M][M]

△	Symbol No.	Part No.	Part Name	Description	Local
	A 1	LVT1145-007A	INST BOOK	ENG	DWF10A
	A 1	LVT1145-002C	INST BOOK	GER FRE DUT SPA ITA SWE FIN DAN	DWF10E
	A 1	LVT1145-010A	INST BOOK	ENG	DWF10J
	A 1	LVT1145-009A	INST BOOK	CHI(PEKIN)	DWF10UF
	A 1	LVT1145-006A	INST BOOK	ENG SPA CHI(PEKIN) POR ARA	DWF10UP
	A 1	LVT1145-004A	INST BOOK	KOR	DWF10UJ,DWF10US
	A 1	LVT1145-008A	INST BOOK	CHI(TAIWAN)	DWF10UT
	A 1	LVT1145-005A	INST BOOK	ENG ARA PER	DWF10UX
	A 2	BT-56012-1	WARRANTY CARD		DWF10A
	A 2	BT-54008-6	WARRANTY CARD		DWF10E
	A 2	BT-59019-1	WARRANTY CARD		DWF10UF
	A 2	BT-56013-1	WARRANTY CARD		DWF10UP
	A 3	QAM0570-001	PIN CABLE		
	A 4	SPDWF10E-SPBOX	SPK WITH BOX		
△	A 5	QAM0027-002	CONVERSION PLUG		DWF10UT,DWF10UX
△	A 6	QAM0112-002	PLUG ADAPTOR		DWF10UJ,DWF10US
	A 7	BT-59020-1	SEAL		DWF10UF
	A 8	BT-59021-2	SVC CENTER LIST		DWF10UF
	A 9	E310162-001	CERTIFICATE TAG		DWF10UF
	A 10	GN30020-003A	SURVEY CARD		DWF10UF
	A 11	YU20333	SAFETY INST.		DWF10J
	A 12	BT-51034-2	J=REGIST CARD		DWF10J
	P 1	LV31492-060A	CARTON		DWF10A
	P 1	LV31492-070A	CARTON		DWF10E
	P 1	LV35232-003A	CARTON		DWF10UF
	P 1	LV31492-090A	CARTON		DWF10J,DWF10UJ
	P 1	LV31492-058A	CARTON		DWF10UP,DWF10US,DWF10UT
	P 1	LV31492-059A	CARTON		DWF10UX
	P 2	QPA02503503P	POLY BAG	25cm x 35cm	
	P 3	QPA07007505P	POLY BAG	70cm x 75cm	DWF10A,DWF10E,DWF10J,DWF10UF,DW F10UJ,DWF10UP
	P 3	LV34587-001A	POLY BAG		DWF10US,DWF10UT,DWF10UX
	P 4	8500051801	MIRROR MAT		
	P 5	8000055101	TOP CUSHION		
	P 6	8000055111	BOTTOM CUSHION		
	P 7	LV33489-010A	CARTON SHEET		DWF10A