

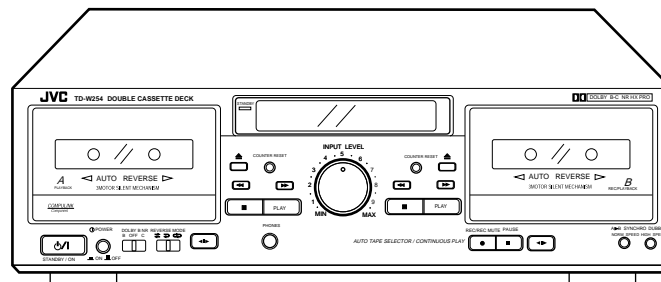
# JVC

## SERVICE MANUAL

### DOUBLE CASSETTE DECK

## TD-W254BK

### Supplement



**COMPU LINK**  
Component

#### Area suffix

J ..... U.S.A  
C ..... Canada  
EN ..... Northern Europe  
U ..... Other Areas

The transformer and the circuit board have already been changed in issued model TD-W254BK (No.4363).

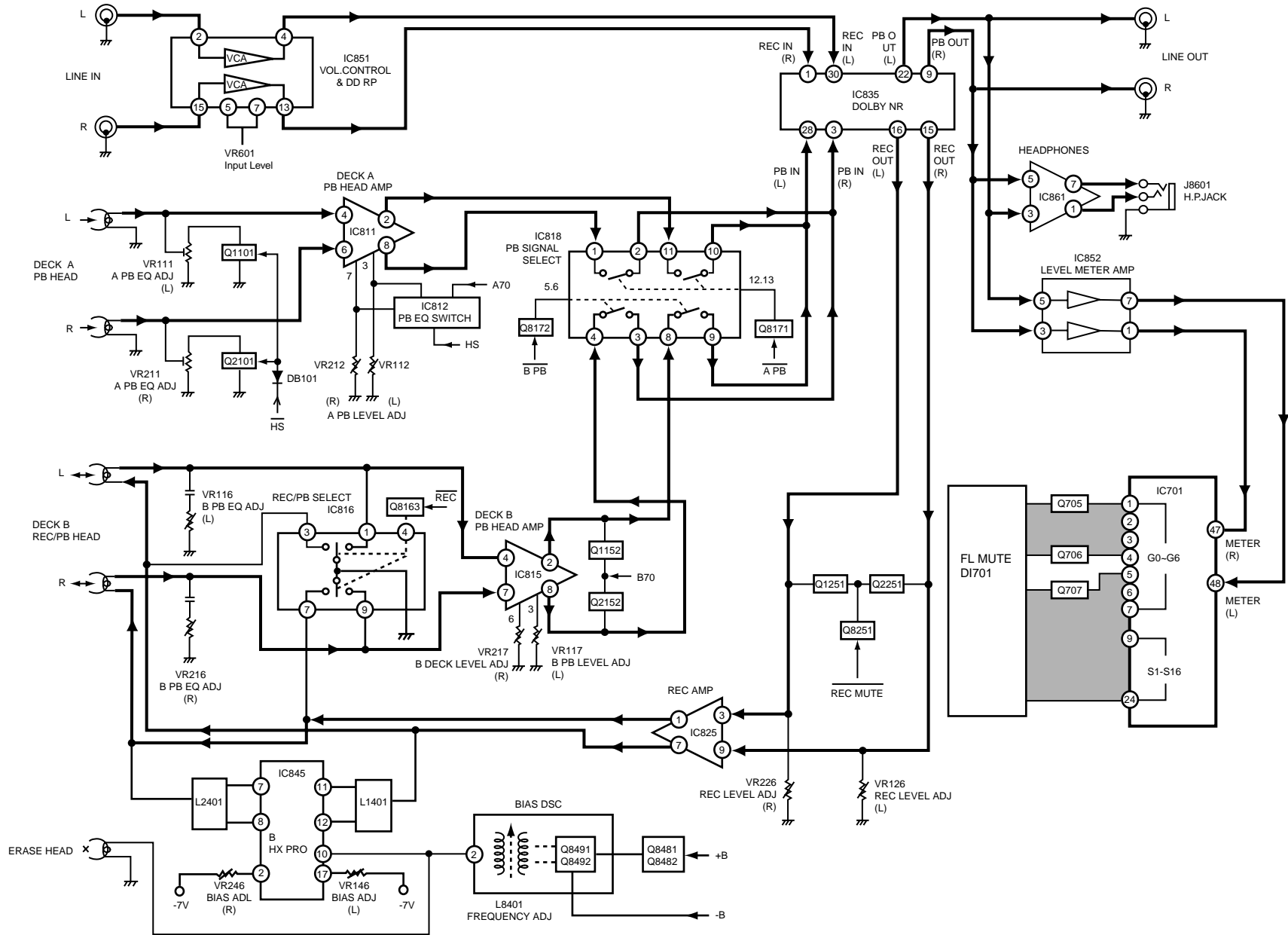
Please confirm this SCHEMATIC DIAGRAMS (No.4363BSCH) to the schematic diagram and the circuit board.

Please refer to TD-W254BK (No.4363) for the content of the text.



VICTOR COMPANY OF JAPAN, LIMITED

PERSONAL & MOBILE NETWORK BUSINESS UNIT. 10-1,1chome,Ohwatari-machi,Maebashi-city,371-8543,Japan



**< M E M O >**

# Standard schematic diagrams

## Equalizer & headphone amp circuit

▲ Parts are safety assurance parts. When replacing those parts make sure to use the specified one.

- ➔ Recording signal
- ➔ Indicator signal
- ⏏ P.B signal (Deck A)
- ➔ P.B & H.P signal (Deck B)

SEMICONDUCTOR	Ref. No.
KRC103M-T	Q1101, Q2101, Q8163.
KRA103M-T	Q8101, Q8171, Q8172.
25C2001/LK/-T	Q8481, Q8491, Q8492.
25K301/RS/-T	Q1152, Q2152.
2SA1175/HFE/-T	Q8482.
KTC3199/GL/-T	Q8471.

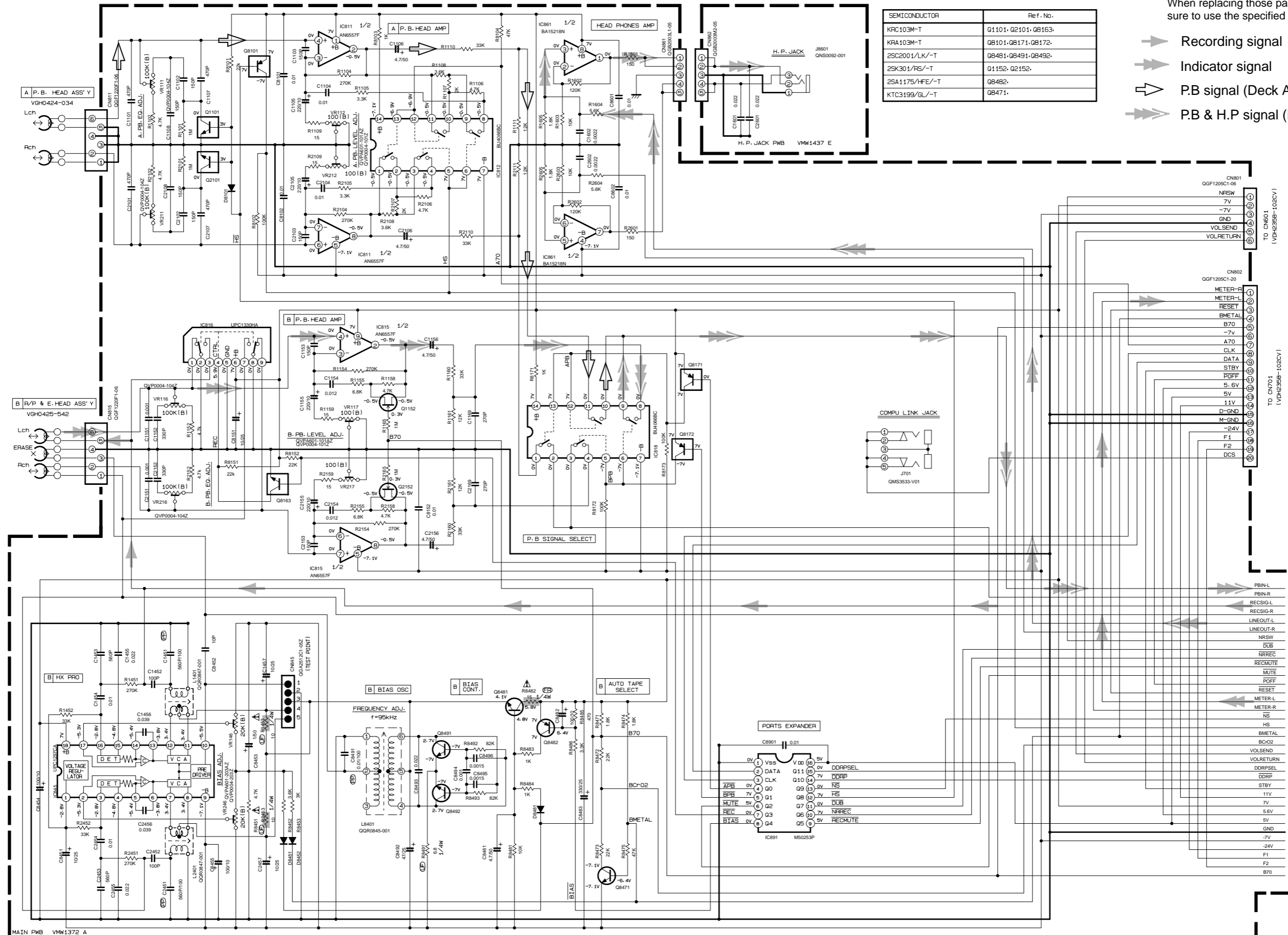
5

4

3

2

1



Note:s/T235812AV.001  
VDH2358-102AV\_1/1

Dolby circuit & power circuit

SEMICONDUCTOR	Ref. No.
KPC103M-T	Q1252, Q2252, Q1252, Q2252, Q8351, Q8501, Q8503
KRA103M-T2	Q8251, Q8352, Q8353, Q8502, Q8504, Q913
KTC3199/CL/-T	Q1251, Q2251
2SA1175/HFE/-T	Q8511
KTC3203/OV/-T	Q1251, Q2251, Q1511, Q2511
2SB772/QP/-T	Q903
2SD882/QP/-T	Q901, Q909
2SD468/BC/-T	Q912, Q915
2SB647/CD/-T	Q905
2SC3576-JVC-T	Q907, Q908

5

4

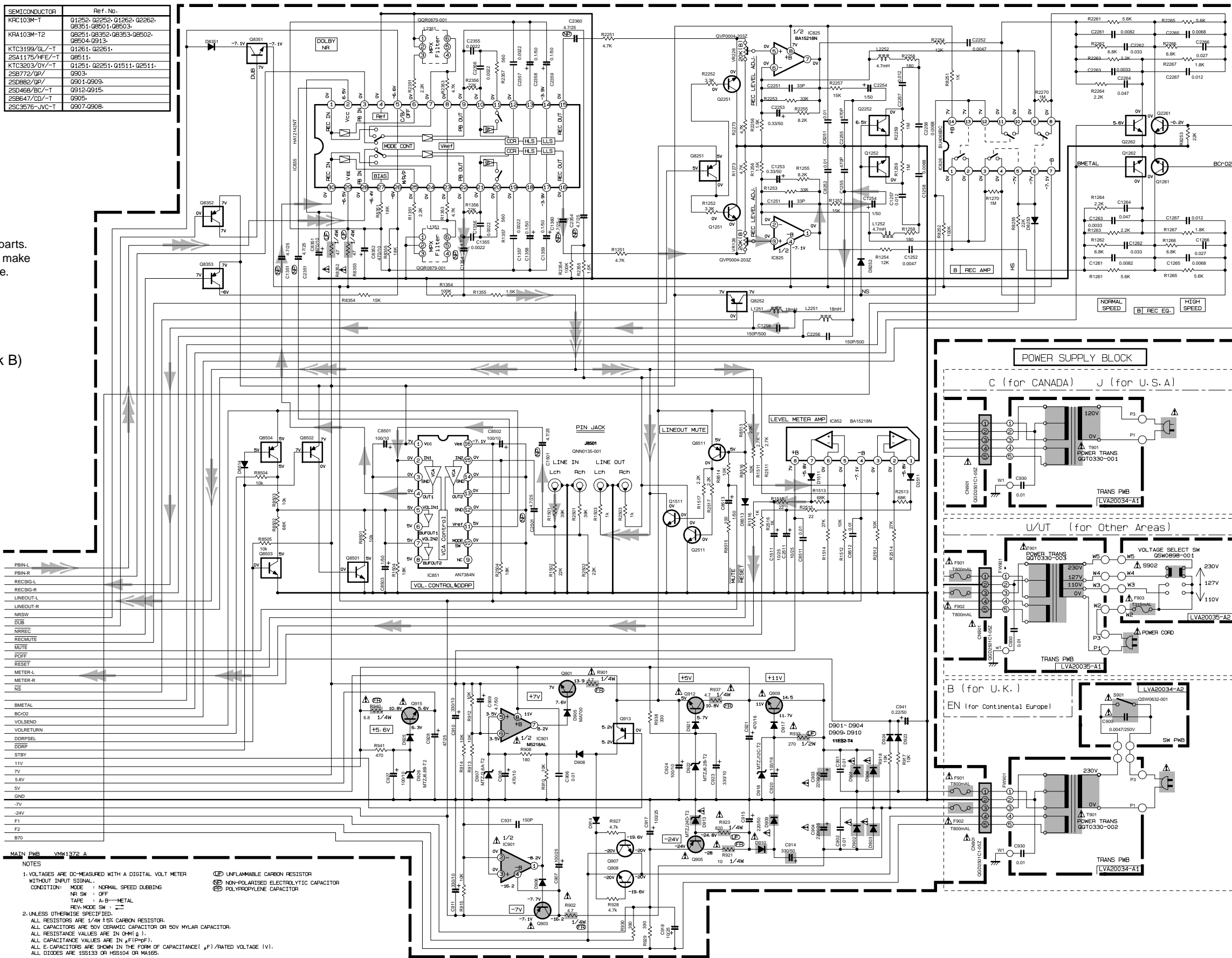
3

2

1

▲ Parts are safety assurance parts. When replacing those parts make sure to use the specified one.

- ➔ Recording signal
- ➔ Indicator signal
- ➔ P.B & H.P signal (Deck B)



- PBIN-L
- PBIN-R
- REC9G-L
- REC9G-R
- LINEOUT-L
- LINEOUT-R
- NR5W
- DUB
- NRREC
- REC MUTE
- MUTE
- POFF
- RESET
- METER-L
- METER-R
- NS
- BMETAL
- BC02
- VOLSEND
- VOLRETURN
- DRPSEL
- DRP
- STBY
- 11V
- 7V
- 5.6V
- GND
- 7V
- 24V
- F1
- F2
- B70

MAIN PWB VM1372-A

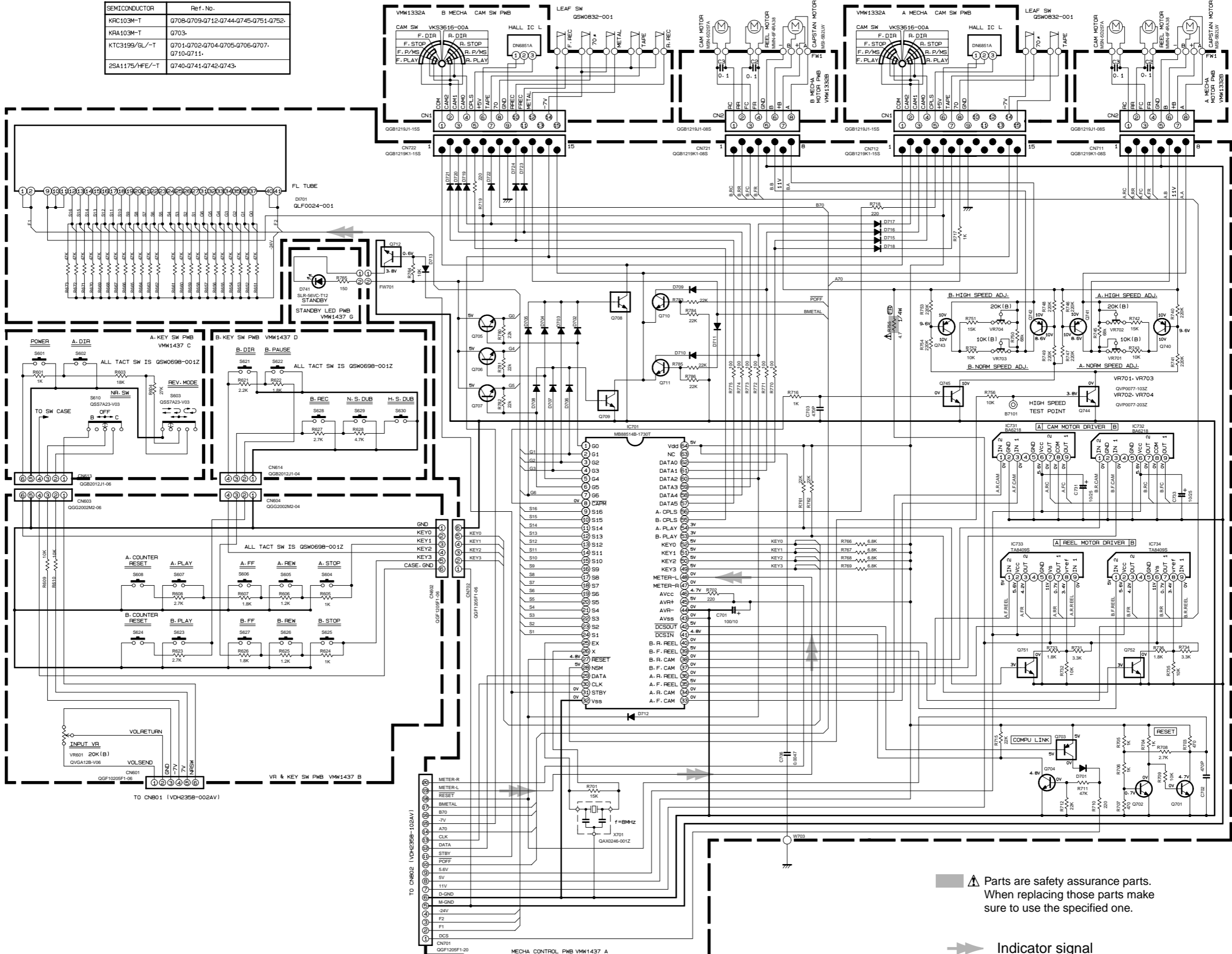
NOTES

1-VOLTAGES ARE DC-MEASURED WITH A DIGITAL VOLT METER WITHOUT INPUT SIGNAL.  
 CONDITION: MODE : NORMAL SPEED DUBBING  
 NR SW : OFF  
 TAPE : A-B-METAL  
 REV-MODE SW : OFF

2-UNLESS OTHERWISE SPECIFIED,  
 ALL RESISTORS ARE 1/4W ±5% CARBON RESISTOR.  
 ALL CAPACITORS ARE 50V CERAMIC CAPACITOR OR 50V MYLAR CAPACITOR.  
 ALL RESISTANCE VALUES ARE IN OHM (Ω).  
 ALL CAPACITANCE VALUES ARE IN μF (μF).  
 ALL E-CAPACITORS ARE SHOWN IN THE FORM OF CAPACITANCE (μF) / RATED VOLTAGE (V).  
 ALL DIODES ARE 1SS133 OR HSS104 OR MA165.

■ Display & Mecha control circuit

SEMICONDUCTOR	Ref. No.
KRC103M-T	Q708-Q709-Q712-Q744-Q745-Q751-Q752
KRA103M-T	Q703
KTC3199/GL/-T	Q701-Q702-Q704-Q705-Q706-Q707-Q710-Q711
ZSA1175/HFE/-T	Q740-Q741-Q742-Q743



▲ Parts are safety assurance parts. When replacing those parts make sure to use the specified one.

➔ Indicator signal

Note: s/VT235812CV VDH2358-102CV\_1/1

# Printed circuit boards

■ Main board

◆ Main board

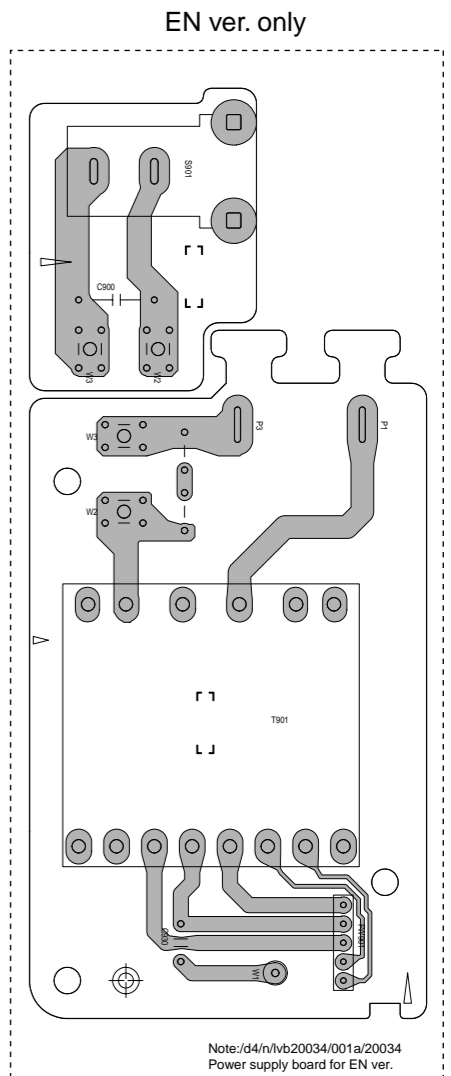
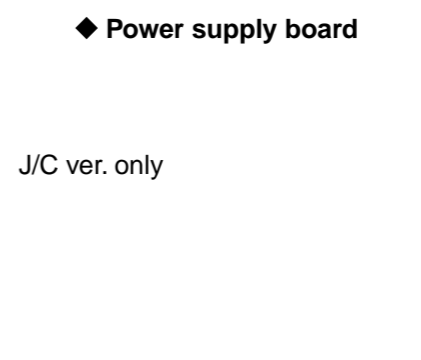
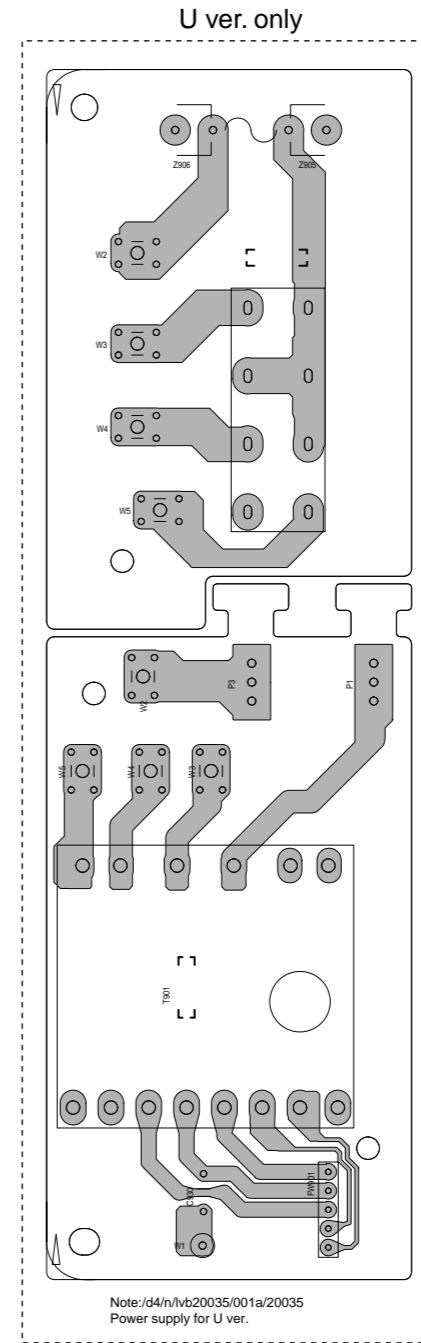
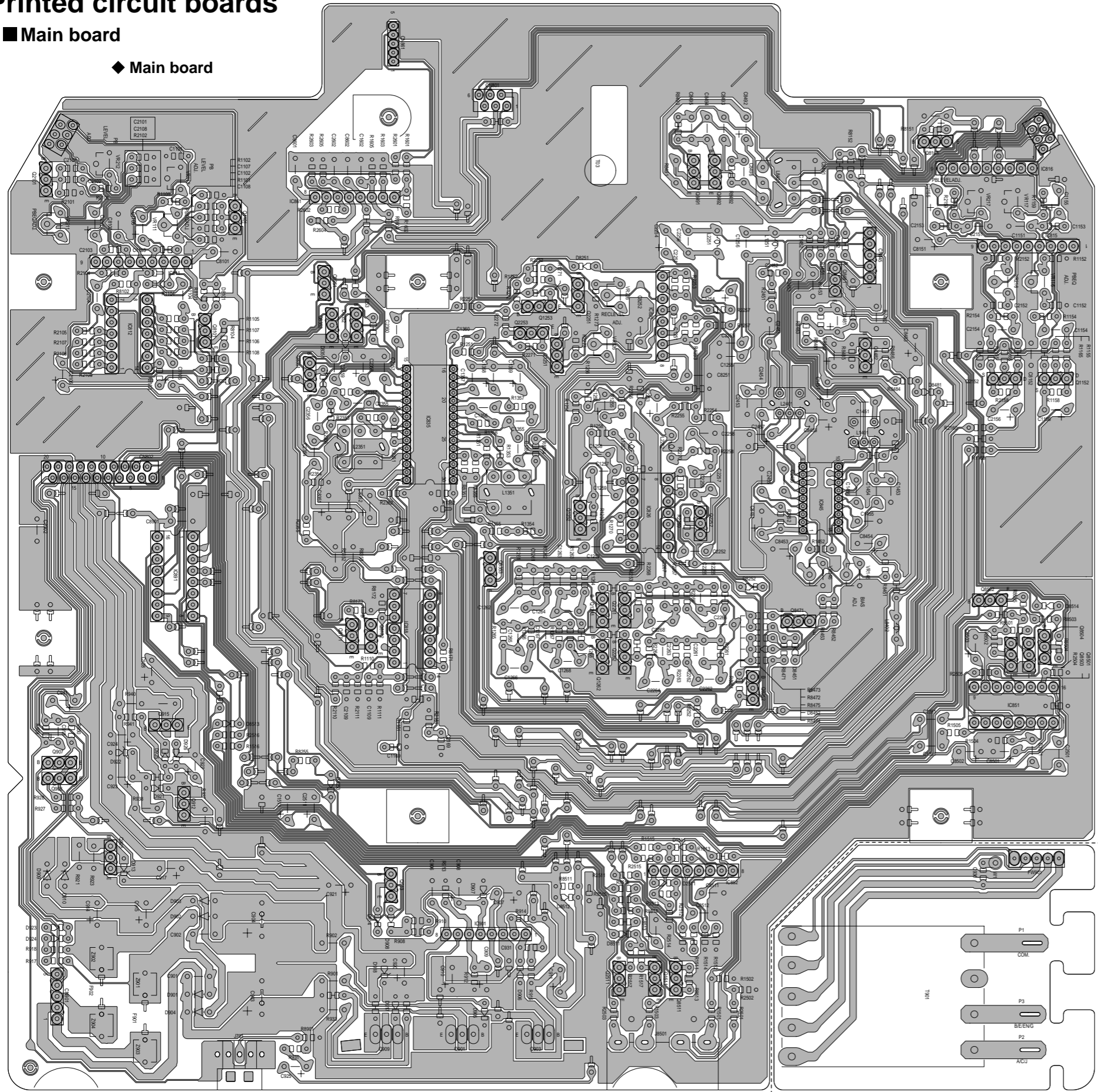
5

4

3

2

1



◆ Power supply board

Note:/d3t/vmw1372/004/1372



■ Sub board

5  
4  
3  
2  
1

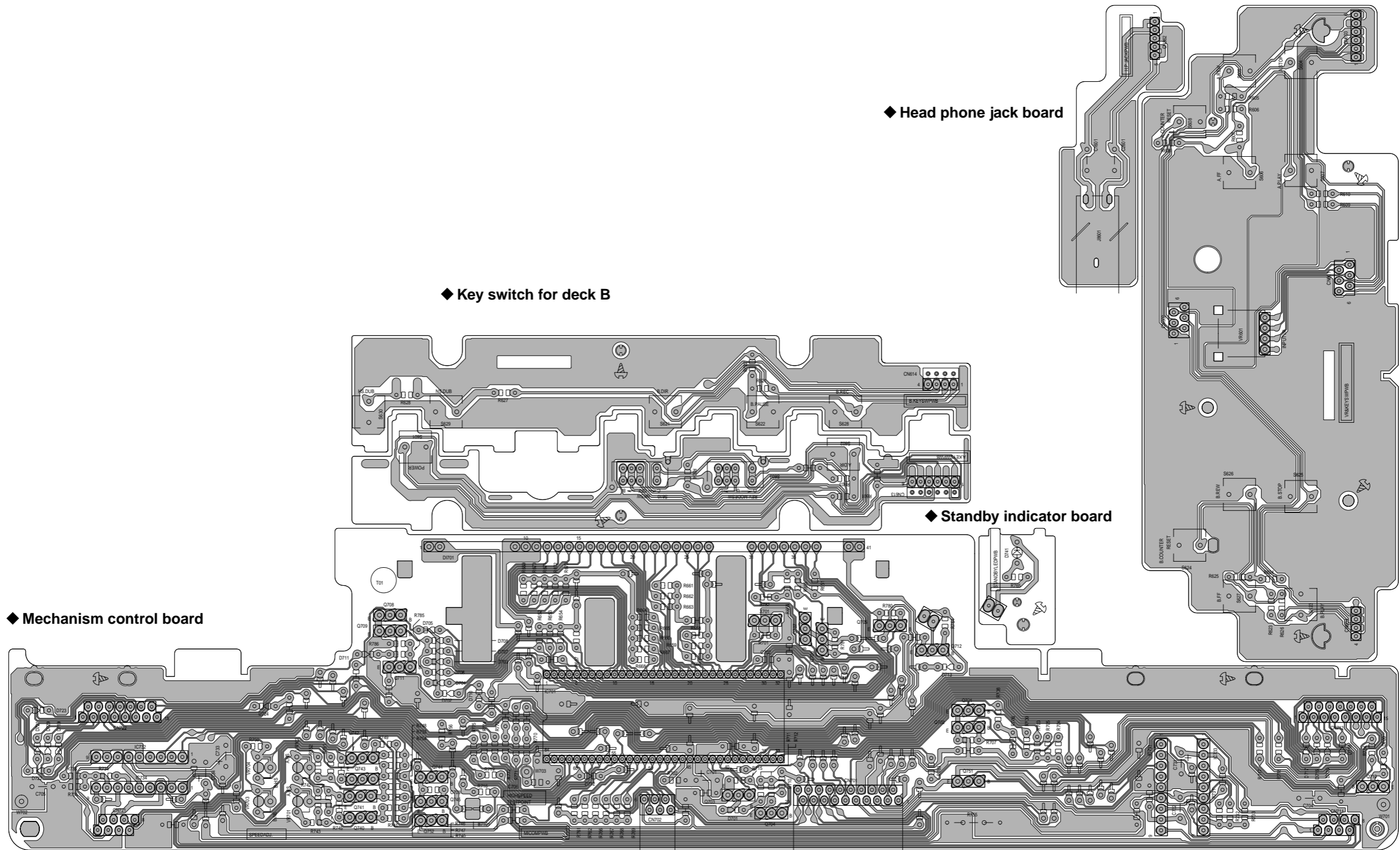
◆ Key switch board for deck A

◆ Head phone jack board

◆ Key switch for deck B

◆ Standby indicator board

◆ Mechanism control board



Note:/d3/t/vmw1437/002/1437

# PARTS LIST

[ TD-W254BK ]

\* All printed circuit boards and its assemblies are not available as service parts.

## Area suffix

J ..... U.S.A  
C ..... Canada  
EN ..... Northern Europe  
U ..... Other Areas

- Contents -

Electrical parts list (Block No.01~02) ..... 3-2 ~ 3-7

## ■ Electrical parts list (Main board)

Block No. 01

△	Item	Parts number	Parts name	Remarks	Area
△	C 900	QCZ9105-472	CER.CAPACITOR	4700PF	EN
	C 901	QCF31HZ-103Z	C CAPACITOR	.010MF +80:-20%	
	C 902	QCF31HZ-103Z	C CAPACITOR	.010MF +80:-20%	
△	C 903	QETM1EM-228	E CAPACITOR	2200MF 20% 25V	
△	C 904	QETM1EM-228	E CAPACITOR	2200MF 20% 25V	
	C 906	QCF31HZ-103Z	C CAPACITOR	.010MF +80:-20%	
	C 907	QETN1EM-107Z	E CAPACITOR	100MF 20% 25V	
	C 908	QETN1AM-477Z	E CAPACITOR	470MF 20% 10V	
	C 909	QETN1HM-475Z	E CAPACITOR	4.7MF 20% 50V	
	C 910	QETN1AM-337Z	E CAPACITOR	330MF 20% 10V	
	C 911	QETN1AM-337Z	E CAPACITOR	330MF 20% 10V	
△	C 914	QETN1HM-337Z	E CAPACITOR	330MF 20% 50V	
	C 915	QETN1HM-227Z	E CAPACITOR	220MF 20% 50V	
	C 917	QETN1EM-107Z	E CAPACITOR	100MF 20% 25V	
	C 918	QETN1EM-106Z	E CAPACITOR	10MF 20% 25V	
	C 920	QETN1CM-107Z	E CAPACITOR	100MF 20% 16V	
	C 921	QETN1CM-477Z	E CAPACITOR	470MF 20% 16V	
	C 923	QETN1AM-337Z	E CAPACITOR	330MF 20% 10V	
	C 924	QETN1AM-107Z	E CAPACITOR	100MF 20% 10V	
	C 927	QETN1AM-107Z	E CAPACITOR	100MF 20% 10V	
	C 928	QETN1EM-476Z	E CAPACITOR	47MF 20% 25V	
	C 930	QDYB1CM-103Y	C.CAPACITOR		
	C 931	QCBB1HK-151Y	C CAPACITOR	150PF 10% 50V	
	C 941	QETN1HM-224Z	E CAPACITOR	.22MF 20% 50V	
	CN801	QGF1205C1-06	CONNECTOR		
	CN802	QGF1205C1-20	CONNECTOR		
	CN811	QGF1220F1-06	CONNECTOR		
	CN815	QGF1220F1-06	CONNECTOR		
	CN845	QGA2512C1-05Z	CONNECTOR	BIAS TEST POINT	
	CN861	QGB2003L1-05	CONNECTOR		
	CN862	QGB2003M2-05	CONNECTOR		
△	CN901	QGD2501C1-05Z	SOCKET I.M		
	C1101	QCBB1HK-471Y	C CAPACITOR	470PF 10% 50V	
	C1102	QCBB1HK-151Y	C CAPACITOR	150PF 10% 50V	
	C1103	QCBB1HK-151Y	C CAPACITOR	150PF 10% 50V	
	C1104	QFLC1HJ-103Z	M CAPACITOR	.010MF 5% 50V	
	C1105	QETN1AM-227Z	E CAPACITOR	220MF 20% 10V	
	C1106	QETN1HM-475Z	E CAPACITOR	4.7MF 20% 50V	
	C1107	QCBB1HK-471Y	C CAPACITOR	470PF 10% 50V	
	C1108	QCBB1HK-151Y	C CAPACITOR	150PF 10% 50V	
	C1151	QFLC1HJ-102Z	M CAPACITOR	1000PF 5% 50V	
	C1152	QCBB1HK-331Y	C CAPACITOR	330PF 10% 50V	
	C1153	QCBB1HK-151Y	C CAPACITOR	150PF 10% 50V	
	C1154	QFLC1HJ-123Z	M CAPACITOR	.012MF 5% 50V	
	C1155	QETN1AM-227Z	E CAPACITOR	220MF 20% 10V	
	C1156	QETN1HM-475Z	E CAPACITOR	4.7MF 20% 50V	
	C1169	QCBB1HK-271Y	C CAPACITOR	270PF 10% 50V	
	C1251	QCSB1HJ-330Y	C CAPACITOR	33PF 5% 50V	
	C1252	QFLC1HJ-472Z	M CAPACITOR	4700PF 5% 50V	
	C1253	QETN1HM-334Z	E CAPACITOR	.33MF 20% 50V	
	C1254	QETN1HM-105Z	E CAPACITOR	1.0MF 20% 50V	
	C1255	QCS31HJ-471Z	C CAPACITOR	470PF 5% 50V	
	C1256	QCS32HJ-151Z	C CAPACITOR	150PF 5% 500V	
	C1257	QFLC1HJ-123Z	M CAPACITOR	.012MF 5% 50V	
	C1258	QFLC1HJ-682Z	M CAPACITOR	6800PF 5% 50V	
	C1261	QFLC1HJ-822Z	M CAPACITOR	8200PF 5% 50V	
	C1262	QDX31EM-333Z	C.CAPA I.M		
	C1263	QCB31HK-332Z	C CAPACITOR	3300PF 10% 50V	
	C1264	QDX31EM-473Z	C.CAPACITOR		
	C1265	QFLC1HJ-682Z	M CAPACITOR	6800PF 5% 50V	
	C1266	QDX31EM-273Z	C.CAPA I.M		
	C1267	QDX31EM-123Z	C.CAPA I.M		
	C1351	QENC1EM-475Z	NP E.CAPA I.M	4.7MF 20% 25V	

△	Item	Parts number	Parts name	Remarks	Area
	C1354	QENC1EM-475Z	NP E.CAPA I.M	4.7MF 20% 25V	
	C1355	QFN31HJ-222Z	M CAPACITOR	2200PF 5% 50V	
	C1356	QFN31HJ-222Z	M CAPACITOR	2200PF 5% 50V	
	C1357	QFN31HJ-222Z	M CAPACITOR	2200PF 5% 50V	
	C1358	QETN1HM-104Z	05CAPACITOR	.10MF 20% 50V	
	C1359	QETN1HM-104Z	05CAPACITOR	.10MF 20% 50V	
	C1360	QENC1EM-475Z	NP E.CAPA I.M	4.7MF 20% 25V	
	C1451	QFP32AJ-561Z	PP CAPACITOR	560PF 5% 100V	
	C1452	QCBB1HK-101Y	C CAPACITOR	100PF 10% 50V	
	C1453	QCS31HJ-561Z	C CAPACITOR	560PF 5% 50V	
	C1454	QFN31HJ-103Z	M CAPACITOR	.010MF 5% 50V	
	C1455	QFLC1HJ-223Z	M CAPACITOR	.022MF 5% 50V	
	C1456	QFLC1HJ-393Z	M CAPACITOR	.039MF 5% 50V	
	C1457	QETN1EM-106Z	E CAPACITOR	10MF 20% 25V	
	C1501	QENC1EM-475Z	NP E.CAPA I.M	4.7MF 20% 25V	
	C1511	QETN1EM-106Z	E CAPACITOR	10MF 20% 25V	
	C1601	QCF31HZ-223Z	C CAPACITOR	.022MF +80:-20%	
	C1602	QCB31HK-222Z	C CAPACITOR	2200PF 10% 50V	
	C2101	QCBB1HK-471Y	C CAPACITOR	470PF 10% 50V	
	C2102	QCBB1HK-151Y	C CAPACITOR	150PF 10% 50V	
	C2103	QCBB1HK-151Y	C CAPACITOR	150PF 10% 50V	
	C2104	QFLC1HJ-103Z	M CAPACITOR	.010MF 5% 50V	
	C2105	QETN1AM-227Z	E CAPACITOR	220MF 20% 10V	
	C2106	QETN1HM-475Z	E CAPACITOR	4.7MF 20% 50V	
	C2107	QCBB1HK-471Y	C CAPACITOR	470PF 10% 50V	
	C2108	QCBB1HK-151Y	C CAPACITOR	150PF 10% 50V	
	C2151	QFLC1HJ-102Z	M CAPACITOR	1000PF 5% 50V	
	C2152	QCBB1HK-331Y	C CAPACITOR	330PF 10% 50V	
	C2153	QCBB1HK-151Y	C CAPACITOR	150PF 10% 50V	
	C2154	QFLC1HJ-123Z	M CAPACITOR	.012MF 5% 50V	
	C2155	QETN1AM-227Z	E CAPACITOR	220MF 20% 10V	
	C2156	QETN1HM-475Z	E CAPACITOR	4.7MF 20% 50V	
	C2169	QCBB1HK-271Y	C CAPACITOR	270PF 10% 50V	
	C2251	QCSB1HJ-330Y	C CAPACITOR	33PF 5% 50V	
	C2252	QFLC1HJ-472Z	M CAPACITOR	4700PF 5% 50V	
	C2253	QETN1HM-334Z	E CAPACITOR	.33MF 20% 50V	
	C2254	QETN1HM-105Z	E CAPACITOR	1.0MF 20% 50V	
	C2255	QCS31HJ-471Z	C CAPACITOR	470PF 5% 50V	
	C2256	QCS32HJ-151Z	C CAPACITOR	150PF 5% 500V	
	C2257	QFLC1HJ-123Z	M CAPACITOR	.012MF 5% 50V	
	C2258	QFLC1HJ-682Z	M CAPACITOR	6800PF 5% 50V	
	C2261	QFLC1HJ-822Z	M CAPACITOR	8200PF 5% 50V	
	C2262	QDX31EM-333Z	C.CAPA I.M		
	C2263	QCB31HK-332Z	C CAPACITOR	3300PF 10% 50V	
	C2264	QDX31EM-473Z	C.CAPACITOR		
	C2265	QFLC1HJ-682Z	M CAPACITOR	6800PF 5% 50V	
	C2266	QDX31EM-273Z	C.CAPA I.M		
	C2267	QDX31EM-123Z	C.CAPA I.M		
	C2351	QENC1EM-475Z	NP E.CAPA I.M	4.7MF 20% 25V	
	C2354	QENC1EM-475Z	NP E.CAPA I.M	4.7MF 20% 25V	
	C2355	QFN31HJ-222Z	M CAPACITOR	2200PF 5% 50V	
	C2356	QFN31HJ-222Z	M CAPACITOR	2200PF 5% 50V	
	C2357	QFN31HJ-222Z	M CAPACITOR	2200PF 5% 50V	
	C2358	QETN1HM-104Z	05CAPACITOR	.10MF 20% 50V	
	C2359	QETN1HM-104Z	05CAPACITOR	.10MF 20% 50V	
	C2360	QENC1EM-475Z	NP E.CAPA I.M	4.7MF 20% 25V	
	C2451	QFP32AJ-561Z	PP CAPACITOR	560PF 5% 100V	
	C2452	QCBB1HK-101Y	C CAPACITOR	100PF 10% 50V	
	C2453	QCS31HJ-561Z	C CAPACITOR	560PF 5% 50V	
	C2454	QFN31HJ-103Z	M CAPACITOR	.010MF 5% 50V	
	C2455	QFLC1HJ-223Z	M CAPACITOR	.022MF 5% 50V	
	C2456	QFLC1HJ-393Z	M CAPACITOR	.039MF 5% 50V	
	C2457	QETN1EM-106Z	E CAPACITOR	10MF 20% 25V	

## ■ Electrical parts list (Main board)

Block No. 01

△	Item	Parts number	Parts name	Remarks	Area	△	Item	Parts number	Parts name	Remarks	Area
	C2501	QENC1EM-475Z	NP E.CAPA 1.M	4.7MF 20% 25V			D8481	1SS133-T2	SI DIODE IM		
	C2511	QETN1EM-106Z	E CAPACITOR	10MF 20% 25V			D8513	1SS133-T2	SI DIODE IM		
	C2601	QCF31HZ-223Z	C CAPACITOR	.022MF +80:-20%			D8514	1SS133-T2	SI DIODE IM		
	C2602	QCB31HK-222Z	C CAPACITOR	2200PF 10% 50V			IC811	AN6557F	IC		
	C8101	QCF31HZ-103Z	C CAPACITOR	.010MF +80:-20%			IC812	BU4066BC	IC		
	C8102	QCF31HZ-103Z	C CAPACITOR	.010MF +80:-20%			IC815	AN6557F	IC		
	C8151	QETN1EM-106Z	E CAPACITOR	10MF 20% 25V			IC816	UPC1330HA	IC		
	C8152	QCF31HZ-103Z	C CAPACITOR	.010MF +80:-20%			IC818	BU4066BC	IC		
	C8251	QCF31HZ-103Z	C CAPACITOR	.010MF +80:-20%			IC825	BA15218N	IC		
	C8252	QCF31HZ-103Z	C CAPACITOR	.010MF +80:-20%			IC826	BU4066BC	IC		
	C8351	QETN1AM-477Z	E CAPACITOR	470MF 20% 10V			IC835	HA12142NT	IC		
	C8352	QETN1AM-477Z	E CAPACITOR	470MF 20% 10V			IC845	UPC1297CA	IC		
	C8451	QETN1EM-106Z	E CAPACITOR	10MF 20% 25V			IC851	AN7384N	IC		
	C8452	QCSB1HJ-100Y	C CAPACITOR	10PF 5% 50V			IC852	BA15218N	IC		
	C8453	QETN1HM-105Z	E CAPACITOR	1.0MF 20% 50V			IC861	BA15218N	IC		
	C8454	QETN1AM-107Z	E CAPACITOR	100MF 20% 10V			IC891	M50253P	IC	PORTS EXPANDER	
	C8455	QETN1AM-107Z	E CAPACITOR	100MF 20% 10V			IC901	M5218AL	IC		
	C8481	QETN1HM-475Z	E CAPACITOR	4.7MF 20% 50V			J 701	QMS3533-V01	JACK		
	C8482	QETN1AM-107Z	E CAPACITOR	100MF 20% 10V			J8501	QNN0135-001	PIN JACK	PIN JACK	
	C8483	QETN1EM-337Z	E CAPACITOR	330MF 20% 25V			J8601	QNS0092-001	JACK		
	C8491	QFP32AJ-103Z	PP CAPACITOR	.010MF 5% 100V			L1251	QQL30BJ-183Z	INDUCTOR		
	C8492	QETN1EM-476Z	E CAPACITOR	47MF 20% 25V			L1252	QQL30BJ-472Z	INDUCTOR		
	C8493	QFLC1HJ-223Z	M CAPACITOR	.022MF 5% 50V			L1351	QQR0879-001	FILTER	MPX FILTER	
	C8494	QFN31HJ-102Z	M CAPACITOR	1000PF 5% 50V			L1401	QQR0847-001	OSC COIL(BIAS)		
	C8495	QFLC1HJ-152Z	M CAPACITOR	1500PF 5% 50V			L2251	QQL30BJ-183Z	INDUCTOR		
	C8496	QFLC1HJ-152Z	M CAPACITOR	1500PF 5% 50V			L2252	QQL30BJ-472Z	INDUCTOR		
	C8501	QETN1AM-107Z	E CAPACITOR	100MF 20% 10V			L2351	QQR0879-001	FILTER	MPX FILTER	
	C8502	QETN1AM-107Z	E CAPACITOR	100MF 20% 10V			L2401	QQR0847-001	OSC COIL(BIAS)		
	C8503	QETN1HM-105Z	E CAPACITOR	1.0MF 20% 50V			L8401	QQR0845-001	OSC COIL(BIAS)		
	C8511	QCF31HZ-103Z	C CAPACITOR	.010MF +80:-20%			P 1	QNZ0079-001Z	TAB		U
	C8512	QCF31HZ-103Z	C CAPACITOR	.010MF +80:-20%			P 1	QNZ0107-001	TAB		J,C,EN
	C8513	QETN1HM-105Z	E CAPACITOR	1.0MF 20% 50V			P 3	QNZ0107-001	TAB		J,C,EN
	C8601	QCF31HZ-103Z	C CAPACITOR	.010MF +80:-20%			P 3	QNZ0079-001Z	TAB		U
	C8602	QCF31HZ-103Z	C CAPACITOR	.010MF +80:-20%			△ Q 901	2SD882/QP/	TRANSISTOR		
	C8901	QCF31HZ-103Z	C CAPACITOR	.010MF +80:-20%			△ Q 903	2SB772/QP/	TRANSISTOR		
△	D 901	11ES2-T4	DIODE I.M			△	Q 905	2SB647/CD/-T	TRANSISTOR		
△	D 902	11ES2-T4	DIODE I.M			Q 907	2SC3576-JVC-T	TRANSISTOR I/M			
△	D 903	11ES2-T4	DIODE I.M			Q 908	2SC3576-JVC-T	TRANSISTOR I/M			
△	D 904	11ES2-T4	DIODE I.M			△ Q 909	2SD882/QP/	TRANSISTOR			
△	D 905	MA700A-T2	ZENER DIODE		EN,U	△ Q 912	2SD468/BC/-T	TRANSISTOR			
	D 906	1SS133-T2	SI DIODE IM			Q 913	KRA103M-T	TRANSISTOR *			
	D 907	MTZJ3.6A-T2	ZENER DIODE IM		J,C	△ Q 915	2SD468/BC/-T	TRANSISTOR			
	D 908	1SS133-T2	SI DIODE IM			Q1101	KRC103M-T	TR I/M			
△	D 909	11ES2-T4	DIODE I.M			Q1152	2SK301/RS/-T	TRANSISTOR(FET)			
△	D 910	11ES2-T4	DIODE I.M			Q1251	KTC3203/OY/-T	TRANSISTOR			
△	D 913	MTZJ24D-T2	Z DIODE I/M			Q1252	KRC103M-T	TR I/M			
	D 914	1SS133-T2	SI DIODE IM			Q1261	KTC3199/GL/-T	TRANSISTOR			
	D 917	1SS133-T2	SI DIODE IM			Q1262	KRC103M-T	TR I/M			
	D 918	MTZJ12C-T2	ZENER DIODE			Q1511	KTC3203/OY/-T	TRANSISTOR			
	D 921	1SS133-T2	SI DIODE IM			Q2101	KRC103M-T	TR I/M			
	D 922	MTZJ6.2B-T2	ZENER DIODE			Q2152	2SK301/RS/-T	TRANSISTOR(FET)			
	D 923	1SS133-T2	SI DIODE IM			Q2251	KTC3203/OY/-T	TRANSISTOR			
	D 924	1SS133-T2	SI DIODE IM			Q2252	KRC103M-T	TR I/M			
	D 925	1SS133-T2	SI DIODE IM			Q2261	KTC3199/GL/-T	TRANSISTOR			
	D 926	MTZJ6.8B-T2	ZENER DIODE			Q2262	KRC103M-T	TR I/M			
	D1511	1SS133-T2	SI DIODE IM			Q2511	KTC3203/OY/-T	TRANSISTOR			
	D2511	1SS133-T2	SI DIODE IM			Q8101	KRA103M-T	TRANSISTOR			
	D8101	1SS133-T2	SI.DIODE			Q8163	KRC103M-T	TR I/M			
	D8252	1SS133-T2	SI DIODE IM			Q8171	KRA103M-T	TRANSISTOR			
	D8253	1SS133-T2	SI DIODE IM			Q8172	KRA103M-T	TRANSISTOR			
	D8351	1SS133-T2	SI DIODE IM			Q8251	KRA103M-T	TRANSISTOR *			
	D8451	1SS133-T2	SI DIODE IM			Q8252	KRA103M-T	TRANSISTOR *			
	D8452	1SS133-T2	SI DIODE IM			Q8351	KRC103M-T	TR I/M			

## ■ Electrical parts list (Main board)

Block No. 01

△	Item	Parts number	Parts name	Remarks	Area	△	Item	Parts number	Parts name	Remarks	Area
	Q8352	KRA103M-T	TRANSISTOR *				R1264	QRE141J-222Y	C RESISTOR	2.2K 5% 1/4W	
	Q8353	KRA103M-T	TRANSISTOR *				R1265	QRE141J-562Y	C RESISTOR	5.6K 5% 1/4W	
	Q8471	KTC3199/GL-T	TRANSISTOR				R1266	QRE141J-682Y	C RESISTOR	6.8K 5% 1/4W	
	Q8481	2SC2001/LK-T	TRANSISTOR				R1267	QRE141J-182Y	C RESISTOR	1.8K 5% 1/4W	
	Q8482	2SA1175/HFE-T	TRANSISTOR				R1270	QRE141J-105Y	C RESISTOR	1.0M 5% 1/4W	
	Q8491	2SC2001/LK-T	TRANSISTOR				R1273	QRE141J-472Y	C RESISTOR	4.7K 5% 1/4W	
	Q8492	2SC2001/LK-T	TRANSISTOR				R1351	QRE141J-222Y	C RESISTOR	2.2K 5% 1/4W	
	Q8501	KRC103M-T	TR I/M				R1352	QRE141J-103Y	C RESISTOR	10K 5% 1/4W	
	Q8502	KRA103M-T	TRANSISTOR *				R1353	QRE141J-472Y	C RESISTOR	4.7K 5% 1/4W	
	Q8503	KRC103M-T	TR I/M				R1354	QRE141J-104Y	C RESISTOR	100K 5% 1/4W	
	Q8504	KRA103M-T	TRANSISTOR *				R1355	QRE141J-152Y	C RESISTOR	1.5K 5% 1/4W	
	Q8511	2SA1175/HFE-T	TRANSISTOR				R1356	QRE141J-223Y	C RESISTOR	22K 5% 1/4W	
△	R 901	QRZ9006-4R7X	F RESISTOR	4.7 1/0W			R1357	QRE141J-561Y	C RESISTOR	560 5% 1/4W	
△	R 902	QRZ9006-4R7X	F RESISTOR	4.7 1/0W			R1451	QRE141J-274Y	C RESISTOR	270K 5% 1/4W	
	R 908	QRE141J-181Y	C RESISTOR	180 5% 1/4W			R1452	QRE141J-333Y	C RESISTOR	33K 5% 1/4W	
	R 910	QRE141J-103Y	C RESISTOR	10K 5% 1/4W		△	R1453	QRJ146J-100X	UNF.C RESISTOR	10 5% 1/4W	
	R 912	QRE141J-103Y	C RESISTOR	10K 5% 1/4W			R1501	QRE141J-393Y	C RESISTOR	39K 5% 1/4W	
	R 913	QRE141J-103Y	C RESISTOR	10K 5% 1/4W			R1502	QRE141J-124Y	C RESISTOR	120K 5% 1/4W	
	R 914	QRE141J-103Y	C RESISTOR	10K 5% 1/4W			R1503	QRE141J-102Y	C RESISTOR	1.0K 5% 1/4W	
	R 915	QRE141J-103Y	C RESISTOR	10K 5% 1/4W			R1504	QRE141J-183Y	C RESISTOR	18K 5% 1/4W	
	R 917	QRE141J-103Y	C RESISTOR	10K 5% 1/4W			R1505	QRE141J-222Y	C RESISTOR	2.2K 5% 1/4W	
	R 918	QRE141J-103Y	C RESISTOR	10K 5% 1/4W			R1511	QRE141J-272Y	C RESISTOR	2.7K 5% 1/4W	
△	R 921	QRZ9005-100X	F.RES I/M	10 1/0W			R1512	QRE141J-103Y	C RESISTOR	10K 5% 1/4W	
△	R 923	QRJ146J-821X	UNF.C.RES I/M	820 5% 1/4W			R1513	QRE141J-683Y	C RESISTOR	68K 5% 1/4W	
	R 927	QRE141J-472Y	C RESISTOR	4.7K 5% 1/4W			R1514	QRE141J-273Y	C RESISTOR	27K 5% 1/4W	
	R 928	QRE141J-472Y	C RESISTOR	4.7K 5% 1/4W			R1515	QRE141J-220Y	C RESISTOR	22 5% 1/4W	
	R 929	QRE141J-391Y	C RESISTOR	390 5% 1/4W			R1516	QRE141J-102Y	C RESISTOR	1.0K 5% 1/4W	
	R 930	QRE141J-391Y	C RESISTOR	390 5% 1/4W			R1517	QRE141J-222Y	C RESISTOR	2.2K 5% 1/4W	
△	R 933	QRK126J-271X	UNF.C.RES. I.M	270 5% 1/2W			R1601	QRE141J-151Y	C RESISTOR	150 5% 1/4W	
△	R 937	QRZ9006-4R7X	F RESISTOR	4.7 1/0W			R1602	QRE141J-124Y	C RESISTOR	120K 5% 1/4W	
	R 938	QRE141J-331Y	C RESISTOR	330 5% 1/4W			R1603	QRE141J-103Y	C RESISTOR	10K 5% 1/4W	
△	R 940	QRZ9031-6R8	FUSI RESISTOR	6.8 1/0W			R1604	QRE141J-562Y	C RESISTOR	5.6K 5% 1/4W	
	R 941	QRE141J-471Y	C RESISTOR	470 5% 1/4W			R1605	QRE141J-182Y	C RESISTOR	1.8K 5% 1/4W	
	R1101	QRE141J-105Y	C RESISTOR	1.0M 5% 1/4W			R2101	QRE141J-105Y	C RESISTOR	1.0M 5% 1/4W	
	R1102	QRE141J-472Y	C RESISTOR	4.7K 5% 1/4W			R2102	QRE141J-472Y	C RESISTOR	4.7K 5% 1/4W	
	R1104	QRE141J-274Y	C RESISTOR	270K 5% 1/4W			R2104	QRE141J-274Y	C RESISTOR	270K 5% 1/4W	
	R1105	QRE141J-332Y	C RESISTOR	3.3K 5% 1/4W			R2105	QRE141J-332Y	C RESISTOR	3.3K 5% 1/4W	
	R1106	QRE141J-472Y	C RESISTOR	4.7K 5% 1/4W			R2106	QRE141J-472Y	C RESISTOR	4.7K 5% 1/4W	
	R1107	QRE141J-202Y	C RESISTOR	2.0K 5% 1/4W			R2107	QRE141J-202Y	C RESISTOR	2.0K 5% 1/4W	
	R1108	QRE141J-362Y	C RESISTOR	3.6K 5% 1/4W			R2108	QRE141J-362Y	C RESISTOR	3.6K 5% 1/4W	
	R1109	QRE141J-150Y	C RESISTOR	15 5% 1/4W			R2109	QRE141J-150Y	C RESISTOR	15 5% 1/4W	
	R1110	QRE141J-333Y	C RESISTOR	33K 5% 1/4W			R2110	QRE141J-333Y	C RESISTOR	33K 5% 1/4W	
	R1111	QRE141J-123Y	C RESISTOR	12K 5% 1/4W			R2111	QRE141J-123Y	C RESISTOR	12K 5% 1/4W	
	R1152	QRE141J-472Y	C RESISTOR	4.7K 5% 1/4W			R2152	QRE141J-472Y	C RESISTOR	4.7K 5% 1/4W	
	R1154	QRE141J-274Y	C RESISTOR	270K 5% 1/4W			R2154	QRE141J-274Y	C RESISTOR	270K 5% 1/4W	
	R1155	QRE141J-682Y	C RESISTOR	6.8K 5% 1/4W			R2155	QRE141J-682Y	C RESISTOR	6.8K 5% 1/4W	
	R1158	QRE141J-472Y	C RESISTOR	4.7K 5% 1/4W			R2158	QRE141J-472Y	C RESISTOR	4.7K 5% 1/4W	
	R1159	QRE141J-150Y	C RESISTOR	15 5% 1/4W			R2159	QRE141J-150Y	C RESISTOR	15 5% 1/4W	
	R1160	QRE141J-333Y	C RESISTOR	33K 5% 1/4W			R2160	QRE141J-333Y	C RESISTOR	33K 5% 1/4W	
	R1161	QRE141J-123Y	C RESISTOR	12K 5% 1/4W			R2161	QRE141J-123Y	C RESISTOR	12K 5% 1/4W	
	R1165	QRE141J-105Y	C RESISTOR	1.0M 5% 1/4W			R2165	QRE141J-105Y	C RESISTOR	1.0M 5% 1/4W	
	R1251	QRE141J-472Y	C RESISTOR	4.7K 5% 1/4W			R2251	QRE141J-472Y	C RESISTOR	4.7K 5% 1/4W	
	R1252	QRE141J-332Y	C RESISTOR	3.3K 5% 1/4W			R2252	QRE141J-332Y	C RESISTOR	3.3K 5% 1/4W	
	R1253	QRE141J-333Y	C RESISTOR	33K 5% 1/4W			R2253	QRE141J-333Y	C RESISTOR	33K 5% 1/4W	
	R1254	QRE141J-123Y	C RESISTOR	12K 5% 1/4W			R2254	QRE141J-123Y	C RESISTOR	12K 5% 1/4W	
	R1255	QRE141J-822Y	C RESISTOR	8.2K 5% 1/4W			R2255	QRE141J-822Y	C RESISTOR	8.2K 5% 1/4W	
	R1256	QRE141J-152Y	C RESISTOR	1.5K 5% 1/4W			R2256	QRE141J-152Y	C RESISTOR	1.5K 5% 1/4W	
	R1257	QRE141J-153Y	C RESISTOR	15K 5% 1/4W			R2257	QRE141J-153Y	C RESISTOR	15K 5% 1/4W	
	R1258	QRE141J-181Y	C RESISTOR	180 5% 1/4W			R2258	QRE141J-181Y	C RESISTOR	180 5% 1/4W	
	R1259	QRE141J-105Y	C RESISTOR	1.0M 5% 1/4W			R2259	QRE141J-105Y	C RESISTOR	1.0M 5% 1/4W	
	R1261	QRE141J-562Y	C RESISTOR	5.6K 5% 1/4W			R2261	QRE141J-562Y	C RESISTOR	5.6K 5% 1/4W	
	R1262	QRE141J-682Y	C RESISTOR	6.8K 5% 1/4W			R2262	QRE141J-682Y	C RESISTOR	6.8K 5% 1/4W	
	R1263	QRE141J-222Y	C RESISTOR	2.2K 5% 1/4W			R2263	QRE141J-222Y	C RESISTOR	2.2K 5% 1/4W	

## ■ Electrical parts list (Main board)

Block No. 01

△	Item	Parts number	Parts name	Remarks	Area	△	Item	Parts number	Parts name	Remarks	Area
	R2264	QRE141J-222Y	C RESISTOR	2.2K 5% 1/4W			R8485	QRE141J-471Y	C RESISTOR	470 5% 1/4W	
	R2265	QRE141J-562Y	C RESISTOR	5.6K 5% 1/4W			R8486	QRE141J-332Y	C RESISTOR	3.3K 5% 1/4W	
	R2266	QRE141J-682Y	C RESISTOR	6.8K 5% 1/4W			R8491	QRJ146J-6R8X	UNF C.RES I/M	6.8 5% 1/4W	
	R2267	QRE141J-182Y	C RESISTOR	1.8K 5% 1/4W			R8492	QRE141J-823Y	C RESISTOR	82K 5% 1/4W	
	R2270	QRE141J-105Y	C RESISTOR	1.0M 5% 1/4W			R8493	QRE141J-823Y	C RESISTOR	82K 5% 1/4W	
	R2273	QRE141J-472Y	C RESISTOR	4.7K 5% 1/4W			R8501	QRE141J-103Y	C RESISTOR	10K 5% 1/4W	
	R2351	QRE141J-222Y	C RESISTOR	2.2K 5% 1/4W			R8502	QRE141J-683Y	C RESISTOR	68K 5% 1/4W	
	R2352	QRE141J-103Y	C RESISTOR	10K 5% 1/4W			R8503	QRE141J-103Y	C RESISTOR	10K 5% 1/4W	
	R2353	QRE141J-472Y	C RESISTOR	4.7K 5% 1/4W			R8504	QRE141J-103Y	C RESISTOR	10K 5% 1/4W	
	R2354	QRE141J-104Y	C RESISTOR	100K 5% 1/4W			R8505	QRE141J-103Y	C RESISTOR	10K 5% 1/4W	
	R2355	QRE141J-152Y	C RESISTOR	1.5K 5% 1/4W			R8513	QRE141J-223Y	C RESISTOR	22K 5% 1/4W	
	R2356	QRE141J-223Y	C RESISTOR	22K 5% 1/4W			R8514	QRE141J-103Y	C RESISTOR	10K 5% 1/4W	
	R2357	QRE141J-561Y	C RESISTOR	560 5% 1/4W			R8515	QRE141J-101Y	C RESISTOR	100 5% 1/4W	
	R2451	QRE141J-274Y	C RESISTOR	270K 5% 1/4W			R8516	QRE141J-103Y	C RESISTOR	10K 5% 1/4W	
	R2452	QRE141J-333Y	C RESISTOR	33K 5% 1/4W			△ S 901	QSW0632-001	PUSH SWITCH		EN
△	R2453	QRJ146J-100X	UNF.C RESISTOR	10 5% 1/4W		△	S 902	QSW0838-001	SELECT SWITCH		U
	R2501	QRE141J-393Y	C RESISTOR	39K 5% 1/4W			VR111	QVP0004-104Z	SEMI.V.RESISTOR	A.PB EQ ADJ	
	R2502	QRE141J-124Y	C RESISTOR	120K 5% 1/4W			VR112	QVP0004-101Z	SEMI.V.RESISTOR	A.PB LEVEL ADJ	
	R2503	QRE141J-102Y	C RESISTOR	1.0K 5% 1/4W			VR116	QVP0004-104Z	SEMI.V.RESISTOR	B.PB EQ ADJ	
	R2504	QRE141J-183Y	C RESISTOR	18K 5% 1/4W			VR117	QVP0004-101Z	SEMI.V.RESISTOR	B.PB LEVEL ADJ	
	R2505	QRE141J-222Y	C RESISTOR	2.2K 5% 1/4W			VR126	QVP0004-203Z	SEMI.V.RESISTOR	B.REC LEVEL ADJ	
	R2511	QRE141J-272Y	C RESISTOR	2.7K 5% 1/4W			VR146	QVP0004-203Z	SEMI.V.RESISTOR	BIAS ADJ	
	R2512	QRE141J-103Y	C RESISTOR	10K 5% 1/4W			VR211	QVP0004-104Z	SEMI.V.RESISTOR	A.PB EQ ADJ	
	R2513	QRE141J-683Y	C RESISTOR	68K 5% 1/4W			VR212	QVP0004-101Z	SEMI.V.RESISTOR	A.PB LEVEL ADJ	
	R2514	QRE141J-273Y	C RESISTOR	27K 5% 1/4W			VR216	QVP0004-104Z	SEMI.V.RESISTOR	B.PB EQ ADJ	
	R2515	QRE141J-220Y	C RESISTOR	22 5% 1/4W			VR217	QVP0004-101Z	SEMI.V.RESISTOR	B.PB LEVEL ADJ	
	R2516	QRE141J-102Y	C RESISTOR	1.0K 5% 1/4W			VR226	QVP0004-203Z	SEMI.V.RESISTOR	B.REC LEVEL ADJ	
	R2517	QRE141J-222Y	C RESISTOR	2.2K 5% 1/4W			VR246	QVP0004-203Z	SEMI.V.RESISTOR	BIAS ADJ	
	R2601	QRE141J-151Y	C RESISTOR	150 5% 1/4W			Z 901	QNG0019-001Z	FUSE CLIP		EN,U
	R2602	QRE141J-124Y	C RESISTOR	120K 5% 1/4W			Z 902	QNG0019-001Z	FUSE CLIP		EN,U
	R2603	QRE141J-103Y	C RESISTOR	10K 5% 1/4W			Z 903	QNG0019-001Z	FUSE CLIP		EN,U
	R2604	QRE141J-562Y	C RESISTOR	5.6K 5% 1/4W			Z 904	QNG0019-001Z	FUSE CLIP		EN,U
	R2605	QRE141J-182Y	C RESISTOR	1.8K 5% 1/4W			Z 905	QNG0003-001Z	FUSE CLIP	FOR F903	U
	R8101	QRE141J-223Y	C RESISTOR	22K 5% 1/4W			Z 906	QNG0003-001Z	FUSE CLIP	FOR F903	U
	R8102	QRE141J-104Y	C RESISTOR	100K 5% 1/4W							
	R8103	QRE141J-102Y	C RESISTOR	1.0K 5% 1/4W							
	R8104	QRE141J-473Y	C RESISTOR	47K 5% 1/4W							
	R8151	QRE141J-223Y	C RESISTOR	22K 5% 1/4W							
	R8152	QRE141J-223Y	C RESISTOR	22K 5% 1/4W							
	R8171	QRE141J-102Y	C RESISTOR	1.0K 5% 1/4W							
	R8172	QRE141J-104Y	C RESISTOR	100K 5% 1/4W							
	R8173	QRE141J-104Y	C RESISTOR	100K 5% 1/4W							
	R8251	QRE141J-102Y	C RESISTOR	1.0K 5% 1/4W							
	R8252	QRE141J-104Y	C RESISTOR	100K 5% 1/4W							
	R8253	QRE141J-223Y	C RESISTOR	22K 5% 1/4W							
	R8255	QRE141J-223Y	C RESISTOR	22K 5% 1/4W							
	R8351	QRE141J-183Y	C RESISTOR	18K 5% 1/4W							
△	R8352	QRJ146J-470X	UNF C.RES I/M	47 5% 1/4W							
△	R8353	QRJ146J-470X	UNF C.RES I/M	47 5% 1/4W							
	R8354	QRE141J-153Y	C RESISTOR	15K 5% 1/4W							
	R8355	QRE141J-183Y	C RESISTOR	18K 5% 1/4W							
	R8451	QRE141J-472Y	C RESISTOR	4.7K 5% 1/4W							
	R8452	QRE141J-362Y	C RESISTOR	3.6K 5% 1/4W							
	R8453	QRE141J-302Y	C RESISTOR	3.0K 5% 1/4W							
	R8471	QRE141J-182Y	C RESISTOR	1.8K 5% 1/4W							
	R8472	QRE141J-223Y	C RESISTOR	22K 5% 1/4W							
	R8473	QRE141J-223Y	C RESISTOR	22K 5% 1/4W							
	R8474	QRE141J-182Y	C RESISTOR	1.8K 5% 1/4W							
	R8475	QRE141J-473Y	C RESISTOR	47K 5% 1/4W							
	R8481	QRE141J-103Y	C RESISTOR	10K 5% 1/4W							
△	R8482	QRZ9005-150X	F.RES I/M	15 1/0W							
	R8483	QRE141J-102Y	C RESISTOR	1.0K 5% 1/4W							
	R8484	QRE141J-102Y	C RESISTOR	1.0K 5% 1/4W							

## ■ Electrical parts list (Sub board)

Block No. 02

△	Item	Parts number	Parts name	Remarks	Area	△	Item	Parts number	Parts name	Remarks	Area
	C 701	QETN1AM-107Z	E CAPACITOR	100MF 20% 10V			Q 743	2SA1175/HFE/-T	TRANSISTOR		
	C 702	QCBB1HK-471Y	C CAPACITOR	470PF 10% 50V			Q 744	KRC103M-T	TR I/M		
	C 703	QCBB1HK-471Y	C CAPACITOR	470PF 10% 50V			Q 745	KRC103M-T	TR I/M		
	C 706	QDXB1CM-472Y	C CAPACITOR				Q 751	KRC103M-T	TR I/M		
	C 731	QETN1EM-106Z	E CAPACITOR	10MF 20% 25V			Q 752	KRC103M-T	TR I/M		
	C 733	QETN1EM-106Z	E CAPACITOR	10MF 20% 25V			R 601	QRE141J-102Y	C RESISTOR	1.0K 5% 1/4W	
	CN601	QGF1205F1-06	CONNECTOR				R 603	QRE141J-183Y	C RESISTOR	18K 5% 1/4W	
	CN602	QGF1205F1-06	CONNECTOR				R 604	QRE141J-273Y	C RESISTOR	27K 5% 1/4W	
	CN603	QGG2002M2-06	CONNECTOR				R 605	QRE141J-102Y	C RESISTOR	1.0K 5% 1/4W	
	CN604	QGG2002M2-04	CONNECTOR				R 606	QRE141J-122Y	C RESISTOR	1.2K 5% 1/4W	
	CN613	QGB2012J1-06	CONNECTOR				R 607	QRE141J-182Y	C RESISTOR	1.8K 5% 1/4W	
	CN614	QGB2012J1-04	CONNECTOR				R 608	QRE141J-272Y	C RESISTOR	2.7K 5% 1/4W	
	CN701	QGF1205F1-20	CONNECTOR				R 609	QRE141J-103Y	C RESISTOR	10K 5% 1/4W	
	CN702	QGF1205F1-06	CONNECTOR				R 610	QRE141J-103Y	C RESISTOR	10K 5% 1/4W	
	CN711	QGB1219K1-08S	CONNECTOR				R 621	QRE141J-222Y	C RESISTOR	2.2K 5% 1/4W	
	CN712	QGB1219K1-15S	CONNECTOR				R 622	QRE141J-182Y	C RESISTOR	1.8K 5% 1/4W	
	CN721	QGB1219K1-08S	CONNECTOR				R 623	QRE141J-272Y	C RESISTOR	2.7K 5% 1/4W	
	CN722	QGB1219K1-15S	CONNECTOR				R 624	QRE141J-102Y	C RESISTOR	1.0K 5% 1/4W	
	D 701	1SS133-T2	SI DIODE IM				R 625	QRE141J-122Y	C RESISTOR	1.2K 5% 1/4W	
	D 702	1SS133-T2	SI DIODE IM				R 626	QRE141J-182Y	C RESISTOR	1.8K 5% 1/4W	
	D 703	1SS133-T2	SI DIODE IM				R 627	QRE141J-272Y	C RESISTOR	2.7K 5% 1/4W	
	D 704	1SS133-T2	SI DIODE IM				R 628	QRE141J-472Y	C RESISTOR	4.7K 5% 1/4W	
	D 705	1SS133-T2	SI DIODE IM				R 651	QRE141J-473Y	C RESISTOR	47K 5% 1/4W	
	D 706	1SS133-T2	SI DIODE IM				R 652	QRE141J-473Y	C RESISTOR	47K 5% 1/4W	
	D 707	1SS133-T2	SI DIODE IM				R 653	QRE141J-473Y	C RESISTOR	47K 5% 1/4W	
	D 708	1SS133-T2	SI DIODE IM				R 654	QRE141J-473Y	C RESISTOR	47K 5% 1/4W	
	D 709	1SS133-T2	SI DIODE IM				R 655	QRE141J-473Y	C RESISTOR	47K 5% 1/4W	
	D 710	1SS133-T2	SI DIODE IM				R 656	QRE141J-473Y	C RESISTOR	47K 5% 1/4W	
	D 711	1SS133-T2	SI DIODE IM				R 657	QRE141J-473Y	C RESISTOR	47K 5% 1/4W	
	D 712	1SS133-T2	SI DIODE IM				R 658	QRE141J-473Y	C RESISTOR	47K 5% 1/4W	
	D 713	1SS133-T2	SI DIODE IM				R 659	QRE141J-473Y	C RESISTOR	47K 5% 1/4W	
	D 715	1SS133-T2	SI DIODE IM				R 660	QRE141J-473Y	C RESISTOR	47K 5% 1/4W	
	D 716	1SS133-T2	SI DIODE IM				R 661	QRE141J-473Y	C RESISTOR	47K 5% 1/4W	
	D 717	1SS133-T2	SI DIODE IM				R 662	QRE141J-473Y	C RESISTOR	47K 5% 1/4W	
	D 718	1SS133-T2	SI DIODE IM				R 663	QRE141J-473Y	C RESISTOR	47K 5% 1/4W	
	D 719	1SS133-T2	SI DIODE IM				R 664	QRE141J-473Y	C RESISTOR	47K 5% 1/4W	
	D 720	1SS133-T2	SI DIODE IM				R 665	QRE141J-473Y	C RESISTOR	47K 5% 1/4W	
	D 721	1SS133-T2	SI DIODE IM				R 666	QRE141J-473Y	C RESISTOR	47K 5% 1/4W	
	D 722	1SS133-T2	SI DIODE IM				R 667	QRE141J-473Y	C RESISTOR	47K 5% 1/4W	
	D 723	1SS133-T2	SI DIODE IM				R 668	QRE141J-473Y	C RESISTOR	47K 5% 1/4W	
	D 724	1SS133-T2	SI DIODE IM				R 669	QRE141J-473Y	C RESISTOR	47K 5% 1/4W	
	D 741	SLR-56VC-T12	LED I.M				R 670	QRE141J-473Y	C RESISTOR	47K 5% 1/4W	
	DI701	QLF0024-001	FL TUBE				R 671	QRE141J-473Y	C RESISTOR	47K 5% 1/4W	
	IC701	MB88514B-1730T	IC				R 672	QRE141J-473Y	C RESISTOR	47K 5% 1/4W	
	IC731	BA6218	IC	A.CAM MOTOR			R 673	QRE141J-473Y	C RESISTOR	47K 5% 1/4W	
	IC732	BA6218	IC	B.CAM MOTOR			R 701	QRE141J-153Y	C RESISTOR	15K 5% 1/4W	
	IC733	TA8409S	IC	A.REEL MOTOR			R 702	QRE141J-221Y	C RESISTOR	220 5% 1/4W	
	IC734	TA8409S	IC	B.REEL MOTOR			R 703	QRE141J-471Y	C RESISTOR	470 5% 1/4W	
	Q 701	KTC3199/GL/-T	TRANSISTOR				R 704	QRE141J-102Y	C RESISTOR	1.0K 5% 1/4W	
	Q 702	KTC3199/GL/-T	TRANSISTOR				R 705	QRE141J-102Y	C RESISTOR	1.0K 5% 1/4W	
	Q 703	KRA103M-T	TRANSISTOR *				R 706	QRE141J-102Y	C RESISTOR	1.0K 5% 1/4W	
	Q 704	KTC3199/GL/-T	TRANSISTOR				R 707	QRE141J-471Y	C RESISTOR	470 5% 1/4W	
	Q 705	KTC3199/GL/-T	TRANSISTOR				R 708	QRE141J-272Y	C RESISTOR	2.7K 5% 1/4W	
	Q 706	KTC3199/GL/-T	TRANSISTOR				R 709	QRE141J-103Y	C RESISTOR	10K 5% 1/4W	
	Q 707	KTC3199/GL/-T	TRANSISTOR				R 710	QRE141J-221Y	C RESISTOR	220 5% 1/4W	
	Q 708	KRC103M-T	TR I/M				R 711	QRE141J-473Y	C RESISTOR	47K 5% 1/4W	
	Q 709	KRC103M-T	TR I/M				R 712	QRE141J-223Y	C RESISTOR	22K 5% 1/4W	
	Q 710	KTC3199/GL/-T	TRANSISTOR				R 715	QRE141J-223Y	C RESISTOR	22K 5% 1/4W	
	Q 711	KTC3199/GL/-T	TRANSISTOR				R 716	QRE141J-102Y	C RESISTOR	1.0K 5% 1/4W	
	Q 712	KRC103M-T	TR I/M				R 717	QRE141J-102Y	C RESISTOR	1.0K 5% 1/4W	
	Q 740	2SA1175/HFE/-T	TRANSISTOR				R 718	QRE141J-221Y	C RESISTOR	220 5% 1/4W	
	Q 741	2SA1175/HFE/-T	TRANSISTOR				R 719	QRE141J-221Y	C RESISTOR	220 5% 1/4W	
	Q 742	2SA1175/HFE/-T	TRANSISTOR				R 731	QRE141J-332Y	C RESISTOR	3.3K 5% 1/4W	

## ■ Electrical parts list (Sub board)

Block No. 02

△	Item	Parts number	Parts name	Remarks	Area	△	Item	Parts number	Parts name	Remarks	Area
	R 732	QRE141J-103Y	C RESISTOR	10K 5% 1/4W			VR702	QVP0077-203Z	SEMI.V.RESISTOR	A.HIGH SPEED AD	
	R 733	QRE141J-182Y	C RESISTOR	1.8K 5% 1/4W			VR703	QVP0077-103Z	SEMI.V.RESISTOR	B.NORM SPEED AD	
	R 734	QRE141J-332Y	C RESISTOR	3.3K 5% 1/4W			VR704	QVP0077-203Z	SEMI.V.RESISTOR	B.HIGH SPEED AD	
	R 735	QRE141J-103Y	C RESISTOR	10K 5% 1/4W			X 701	QAX0246-001Z	RESONATOR I.M	(F=8MHZ)	
	R 736	QRE141J-182Y	C RESISTOR	1.8K 5% 1/4W			Z 701	VYH3844-003	FL HOLDER		
	R 740	QRE141J-224Y	C RESISTOR	220K 5% 1/4W							
	R 741	QRE141J-224Y	C RESISTOR	220K 5% 1/4W							
	R 742	QRE141J-153Y	C RESISTOR	15K 5% 1/4W							
	R 743	QRE141J-103Y	C RESISTOR	10K 5% 1/4W							
	R 745	QRE141J-683Y	C RESISTOR	68K 5% 1/4W							
	R 746	QRE141J-224Y	C RESISTOR	220K 5% 1/4W							
	R 747	QRE141J-224Y	C RESISTOR	220K 5% 1/4W							
	R 748	QRE141J-224Y	C RESISTOR	220K 5% 1/4W							
	R 749	QRE141J-224Y	C RESISTOR	220K 5% 1/4W							
	R 750	QRE141J-683Y	C RESISTOR	68K 5% 1/4W							
	R 751	QRE141J-153Y	C RESISTOR	15K 5% 1/4W							
	R 752	QRE141J-103Y	C RESISTOR	10K 5% 1/4W							
	R 753	QRE141J-224Y	C RESISTOR	220K 5% 1/4W							
	R 754	QRE141J-224Y	C RESISTOR	220K 5% 1/4W							
△	R 755	QRZ9031-4R7	FUSI RESISTOR	4.7 1/0W							
	R 756	QRE141J-103Y	C RESISTOR	10K 5% 1/4W							
	R 761	QRE141J-223Y	C RESISTOR	22K 5% 1/4W							
	R 762	QRE141J-223Y	C RESISTOR	22K 5% 1/4W							
	R 764	QRE141J-103Y	C RESISTOR	10K 5% 1/4W							
	R 765	QRE141J-151Y	C RESISTOR	150 5% 1/4W							
	R 766	QRE141J-682Y	C RESISTOR	6.8K 5% 1/4W							
	R 767	QRE141J-682Y	C RESISTOR	6.8K 5% 1/4W							
	R 768	QRE141J-682Y	C RESISTOR	6.8K 5% 1/4W							
	R 769	QRE141J-682Y	C RESISTOR	6.8K 5% 1/4W							
	R 770	QRE141J-101Y	C RESISTOR	100 5% 1/4W							
	R 771	QRE141J-101Y	C RESISTOR	100 5% 1/4W							
	R 772	QRE141J-101Y	C RESISTOR	100 5% 1/4W							
	R 773	QRE141J-101Y	C RESISTOR	100 5% 1/4W							
	R 774	QRE141J-101Y	C RESISTOR	100 5% 1/4W							
	R 775	QRE141J-101Y	C RESISTOR	100 5% 1/4W							
	R 780	QRE141J-223Y	C RESISTOR	22K 5% 1/4W							
	R 781	QRE141J-223Y	C RESISTOR	22K 5% 1/4W							
	R 782	QRE141J-223Y	C RESISTOR	22K 5% 1/4W							
	R 783	QRE141J-223Y	C RESISTOR	22K 5% 1/4W							
	R 784	QRE141J-223Y	C RESISTOR	22K 5% 1/4W							
	R 785	QRE141J-223Y	C RESISTOR	22K 5% 1/4W							
	R 786	QRE141J-223Y	C RESISTOR	22K 5% 1/4W							
	S 601	QSW0698-001Z	TACT SWITCH								
	S 602	QSW0698-001Z	TACT SWITCH								
	S 603	QSS7A23-V03	SLIDE SWITCH	REV.MODE SW							
	S 604	QSW0698-001Z	TACT SWITCH								
	S 605	QSW0698-001Z	TACT SWITCH								
	S 606	QSW0698-001Z	TACT SWITCH								
	S 607	QSW0698-001Z	TACT SWITCH								
	S 608	QSW0698-001Z	TACT SWITCH								
	S 610	QSS7A23-V03	SLIDE SWITCH	DOLBY NR SW							
	S 621	QSW0698-001Z	TACT SWITCH								
	S 622	QSW0698-001Z	TACT SWITCH								
	S 623	QSW0698-001Z	TACT SWITCH								
	S 624	QSW0698-001Z	TACT SWITCH								
	S 625	QSW0698-001Z	TACT SWITCH								
	S 626	QSW0698-001Z	TACT SWITCH								
	S 627	QSW0698-001Z	TACT SWITCH								
	S 628	QSW0698-001Z	TACT SWITCH								
	S 629	QSW0698-001Z	TACT SWITCH								
	S 630	QSW0698-001Z	TACT SWITCH								
	VR601	QVGA12B-V06	V.RESISTOR	INPUT VR							
	VR701	QVP0077-103Z	SEMI.V.RESISTOR	A.NORM SPEED AD							