

JVC

SCHEMATIC DIAGRAMS

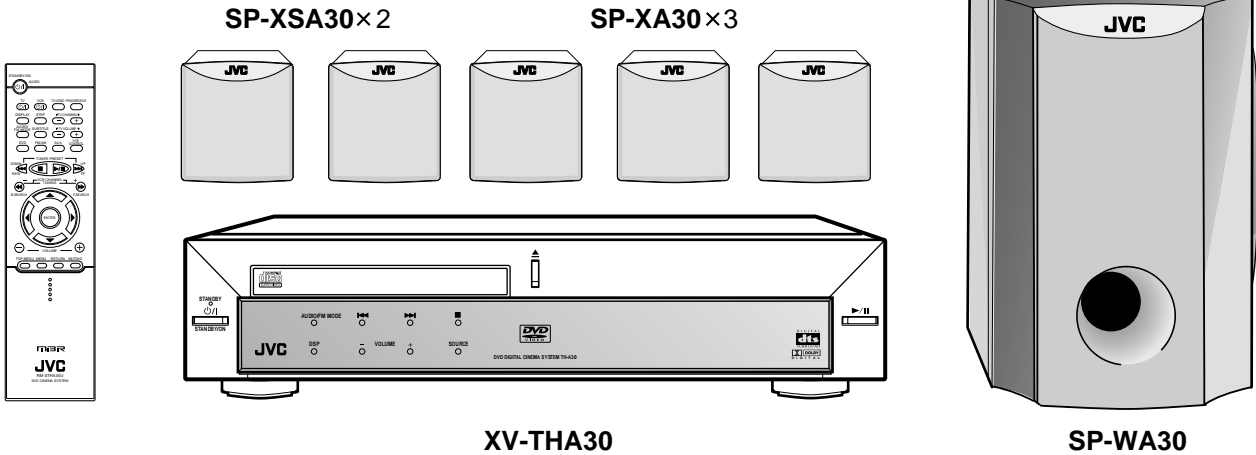
DVD DIGITAL CINEMA SYSTEM

TH-A30

CD-ROM No.SML200212

Area suffix

US ----- Singapore
 UB ----- Hong Kong
 UW -- Brazil, Mexico, Peru
 UG - Turkey, South Africa,
 Egypt
 A ----- Australia



XV-THA30

SP-WA30



Contents

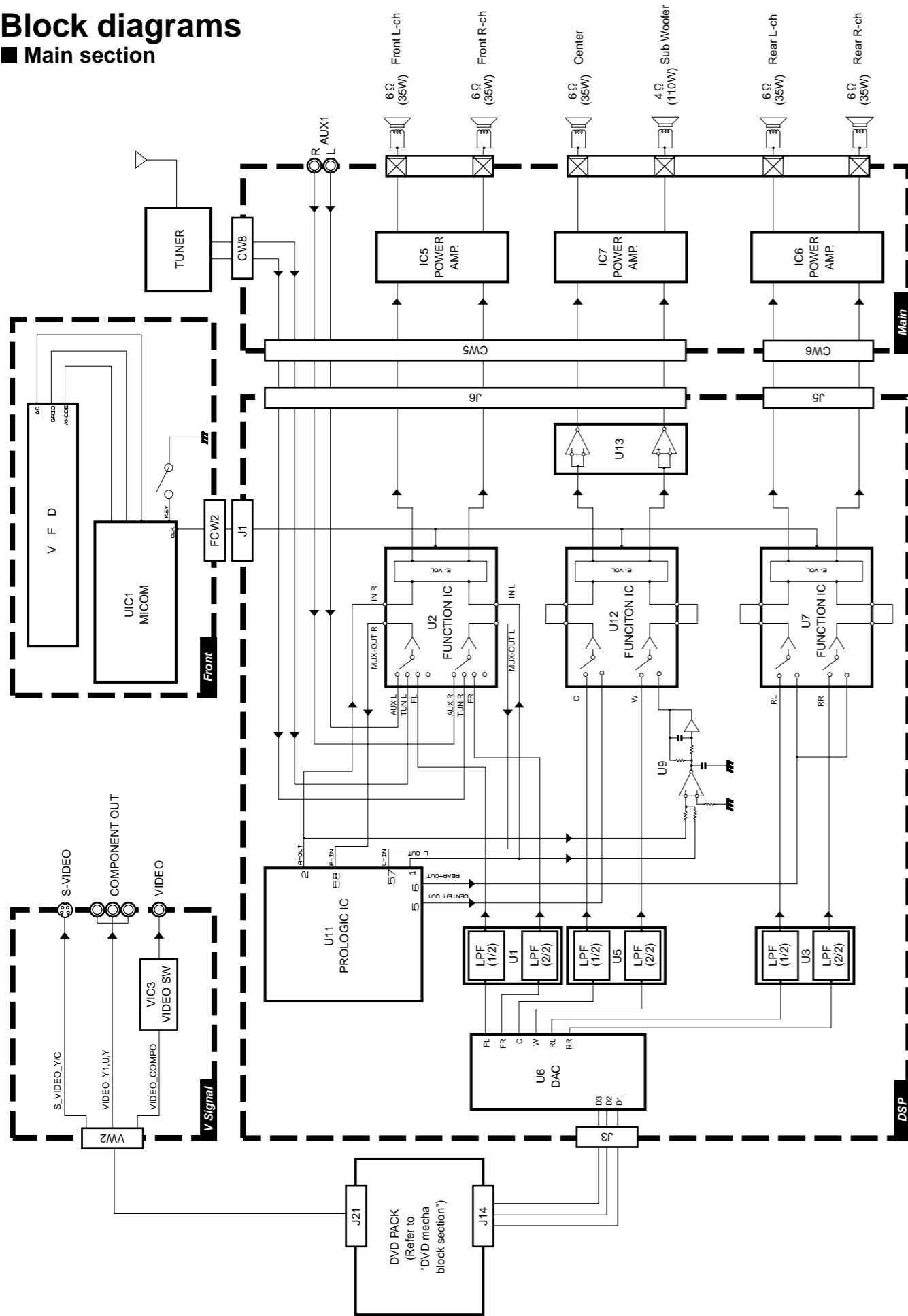
Block diagrams ----- 2-1
 Standard schematic diagrams ----- 2-2
 Printed circuit boards ----- 2-6~10

In regard with component parts appearing on the silk-screen printed side (parts side) of the PWB diagrams, the parts that are printed over with black such as the resistor (■), diode (▬) and ICP (●) or identified by the "△" mark nearby are critical for safety.

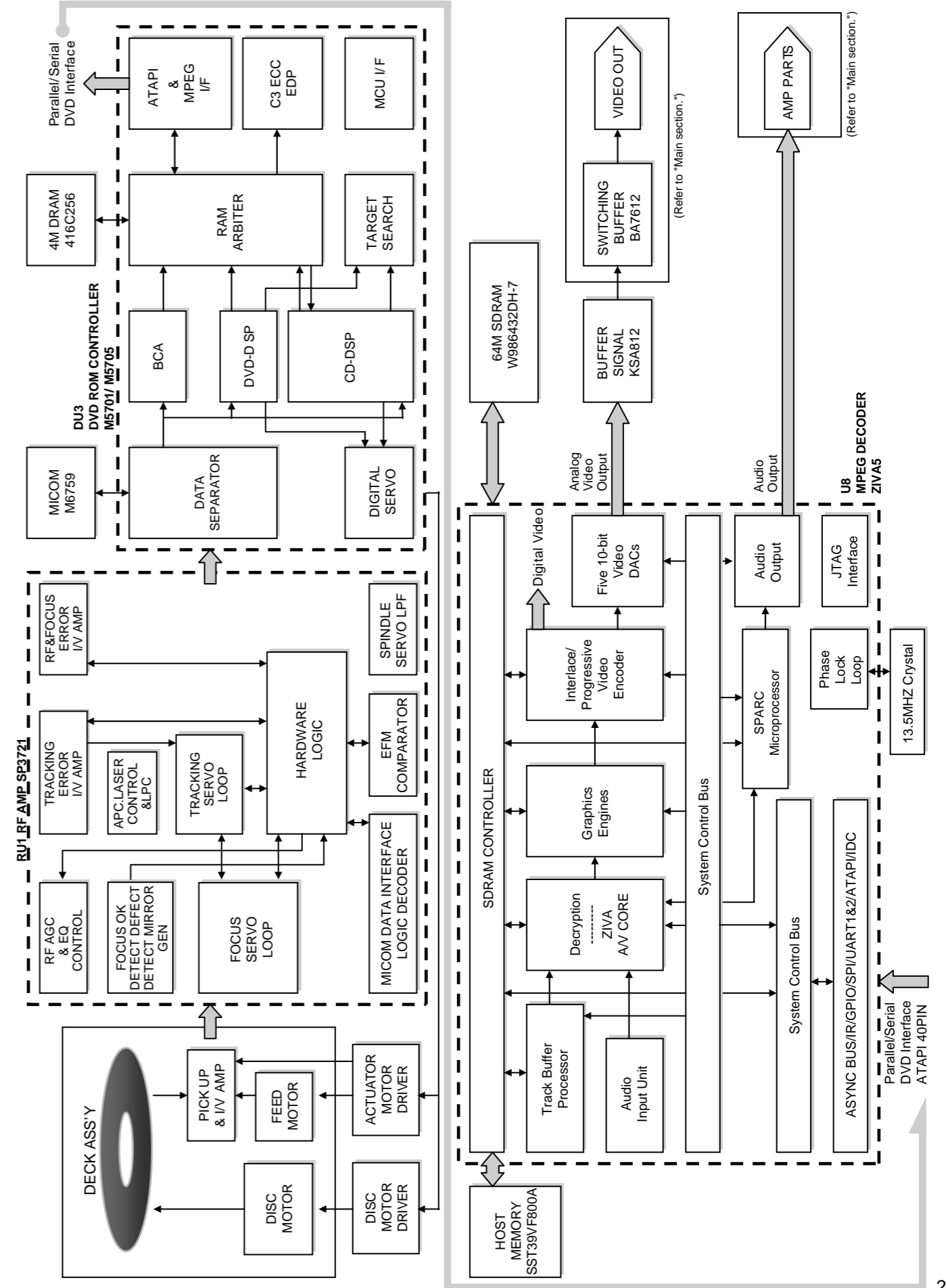
(This regulation does not correspond to J and C version.)

Block diagrams

Main section



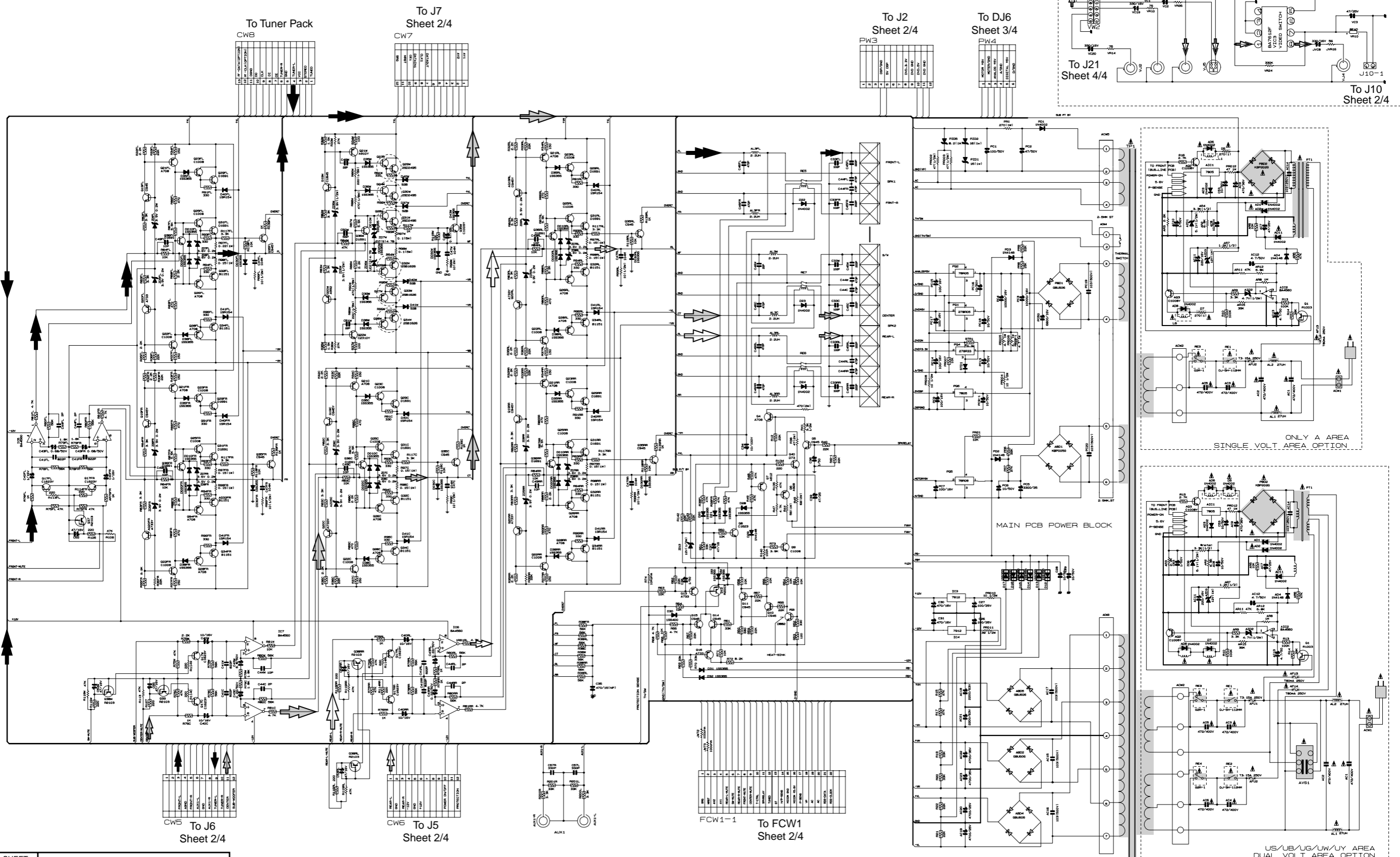
DVD mecha block section



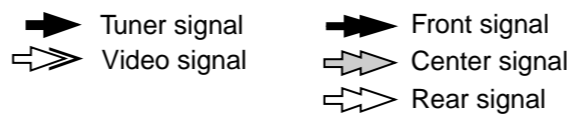
Standard schematic diagrams

■ Main section /Power supply section

5
4
3
2
1



SHEET NUMBER	CIRCUIT DESCRIPTION
1/4	Main /Power supply /Video signal output
2/4	FL display & System control /DSP
3/4	DVD loader
4/4	DVD MPEG

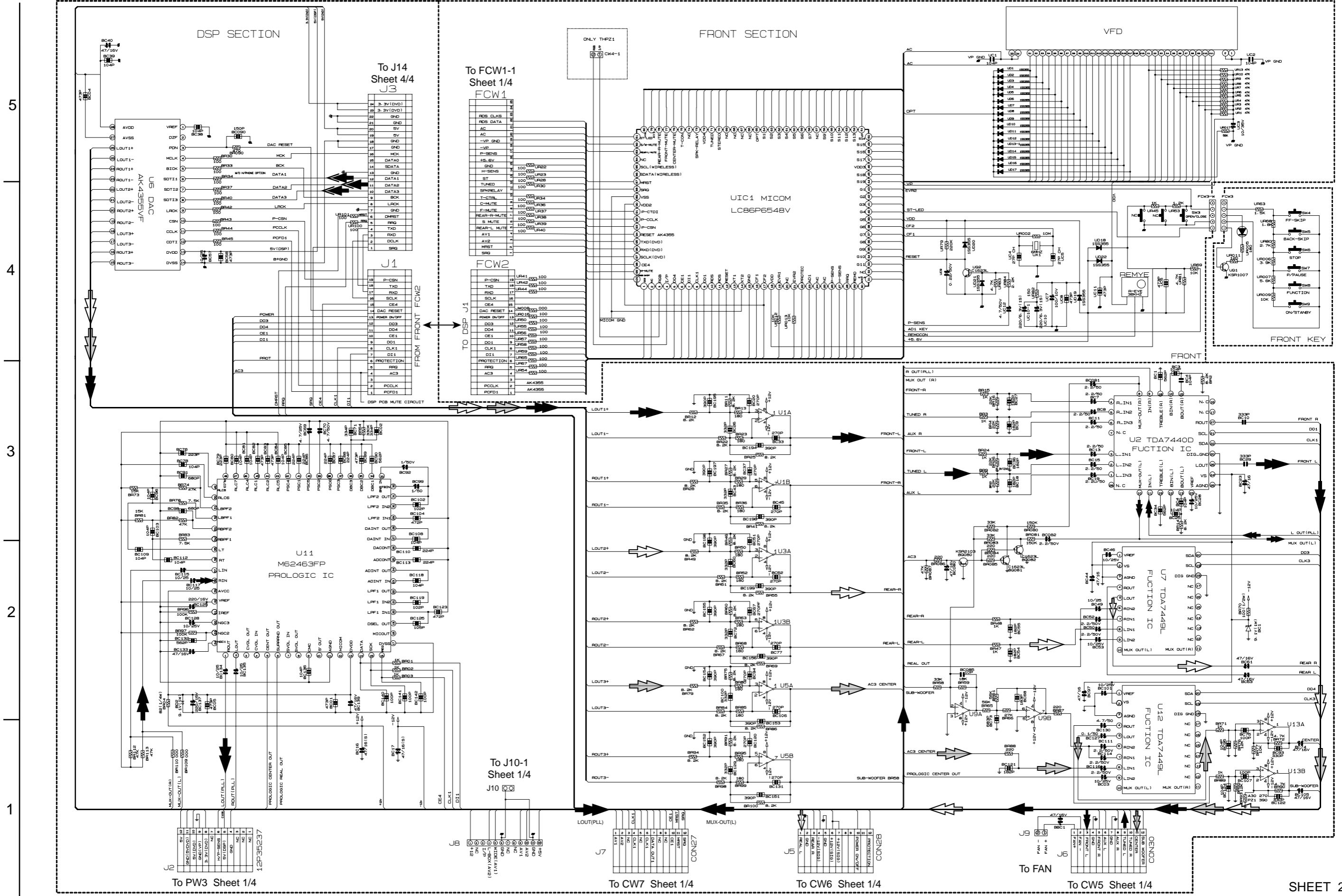


▲ Parts are safety assurance parts. When replacing those parts, make sure to use the specified parts.

A B C 2-2 D E F G H

FL display & System control section / DSP section

Tuner signal Digital audio signal Front signal Center signal Rear signal



To PW3 Sheet 1/4

To J10-1 Sheet 1/4

To CW7 Sheet 1/4

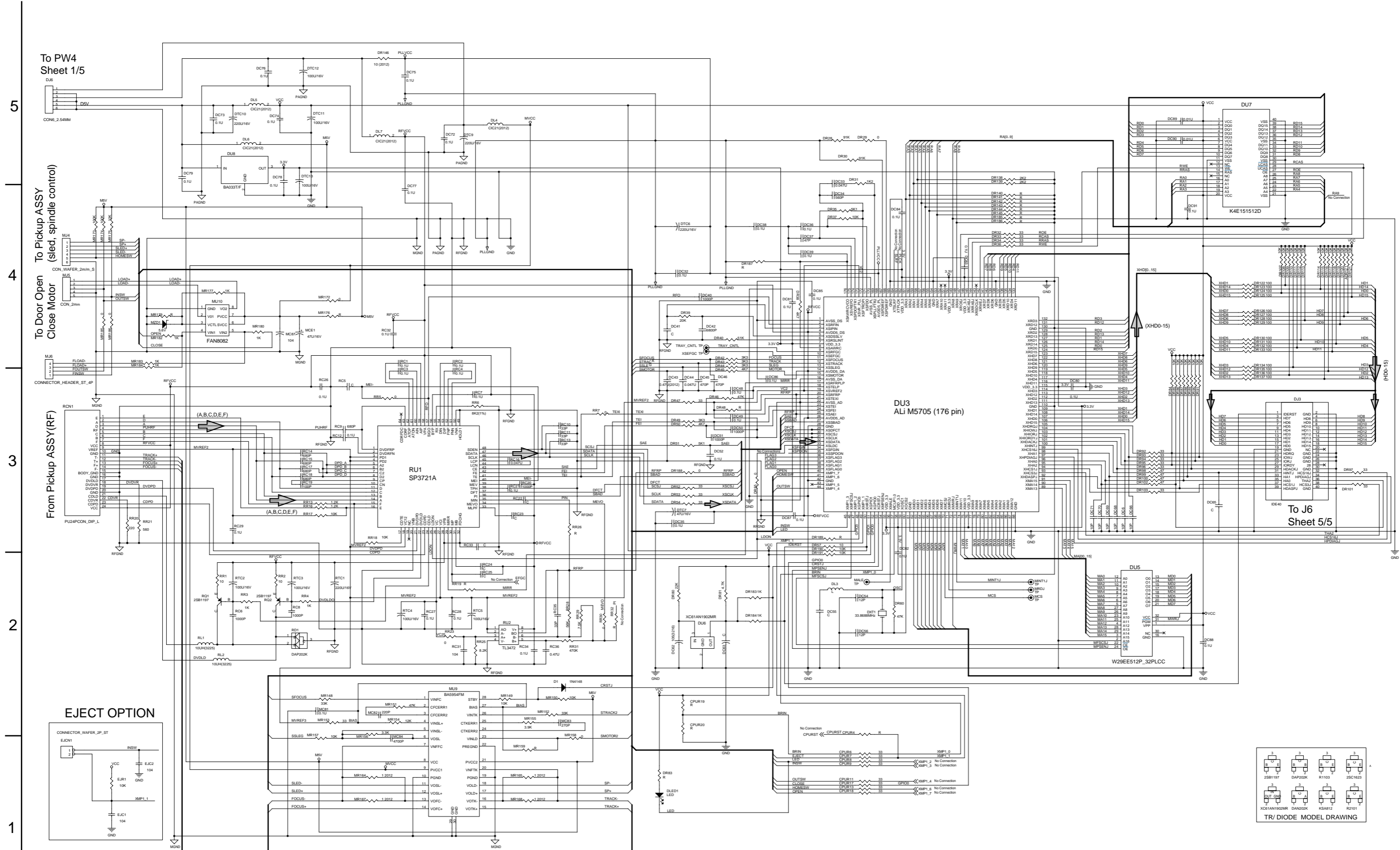
To CW6 Sheet 1/4

To FAN

To CW5 Sheet 1/4

SHEET 2/4

DVD loader section



To PW4 Sheet 1/5

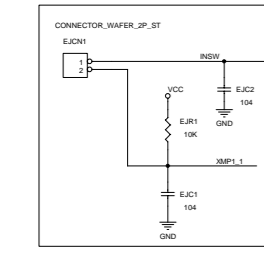
To Pickup ASSY (sled, spindle control)

To Door Open Close Motor

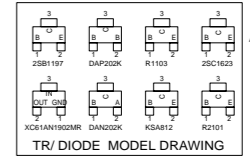
From Pickup ASSY(RF)

To J6 Sheet 5/5

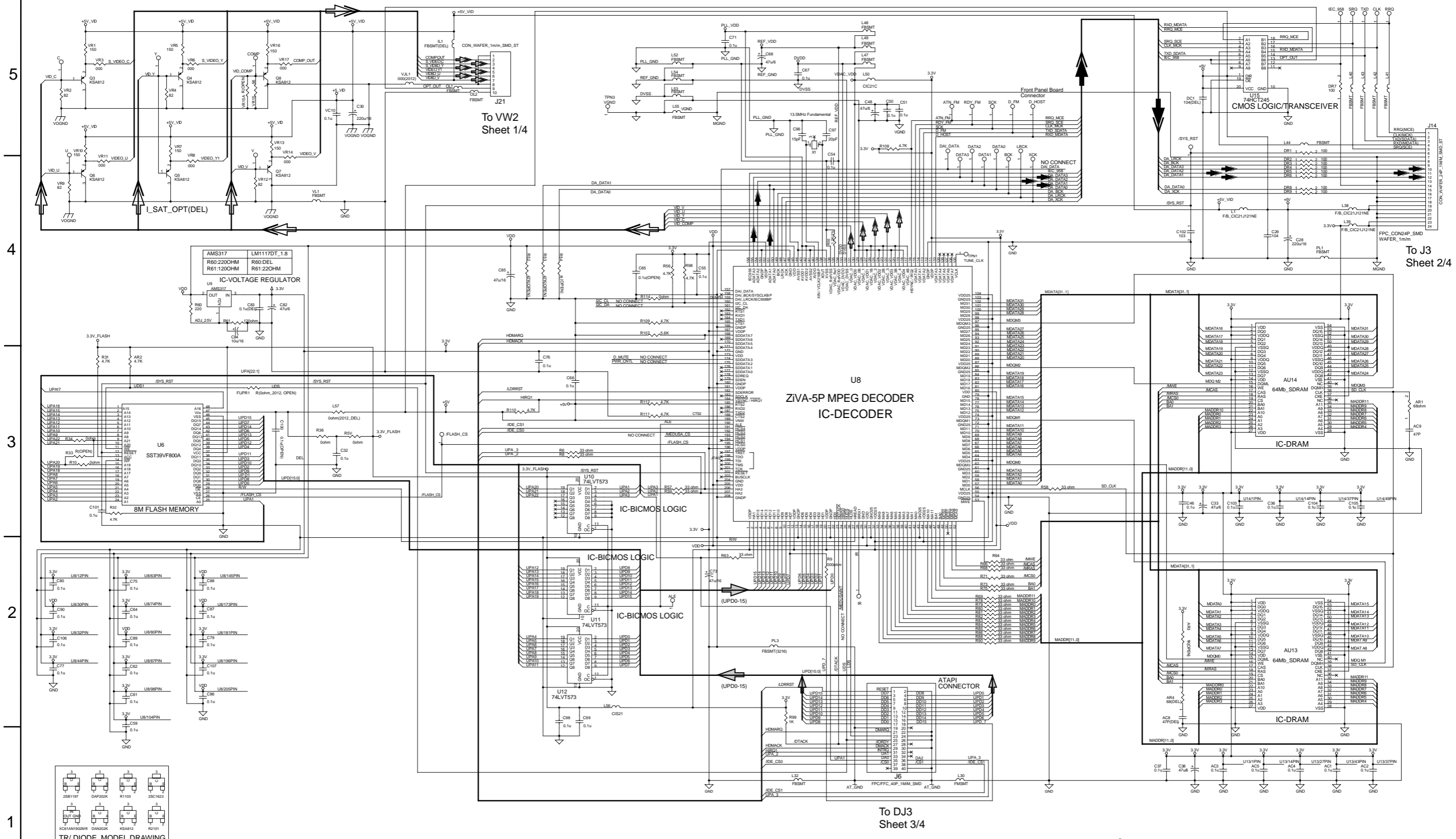
EJECT OPTION



Digital data signal

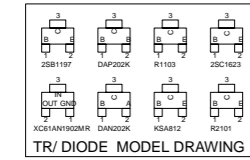


DVD MPEG section



5
4
3
2
1

A B C D E F G



➡ Digital data signal
➡➡ Digital audio signal
➡➡➡ Video signal

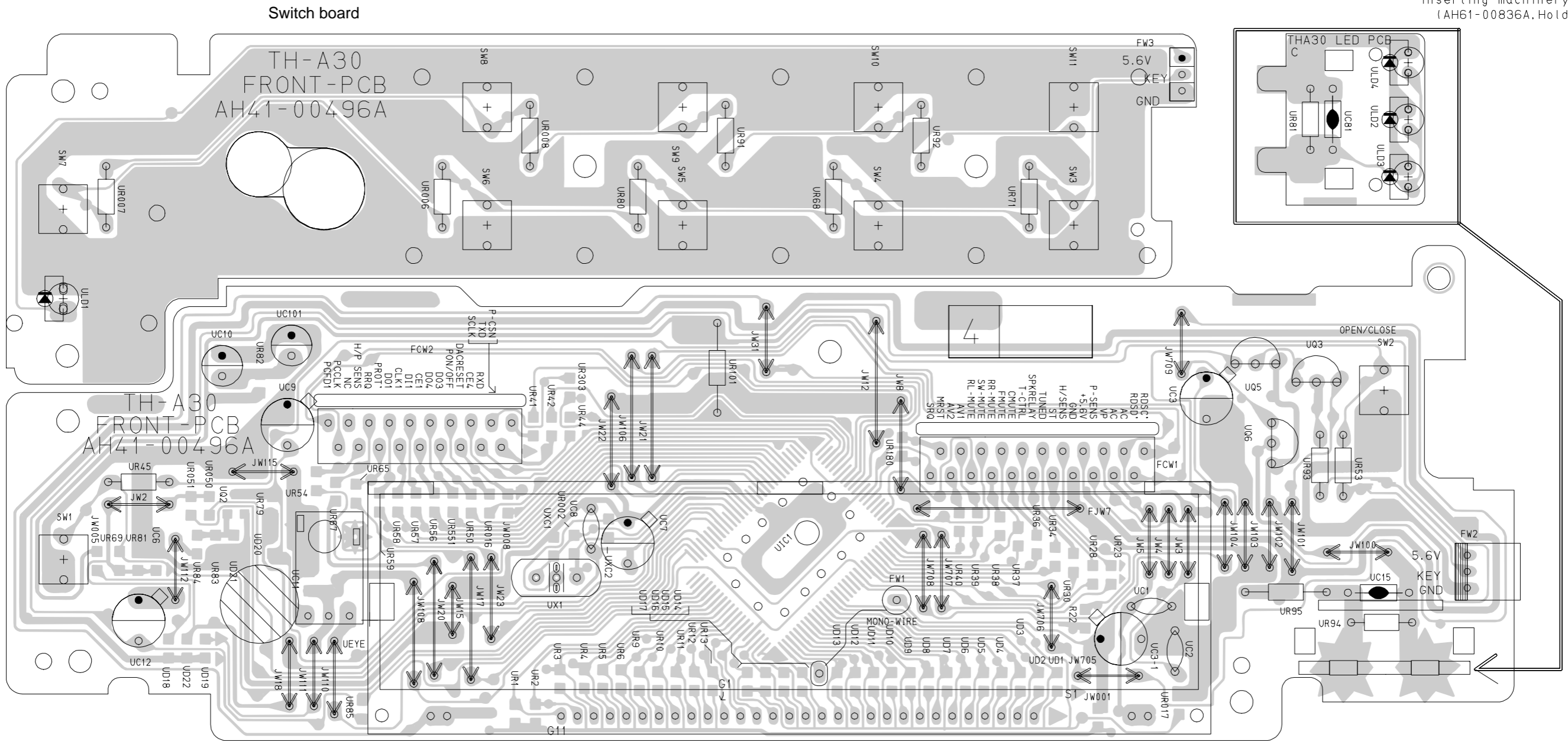
Printed circuit boards

■ Front board

NOTICE

Insert LED after inserting machinery parts (AH61-00836A, Holder-LED)

5
4
3
2
1



Display board

A | B | C | 26 | D | E | F | G | H

■ Main board

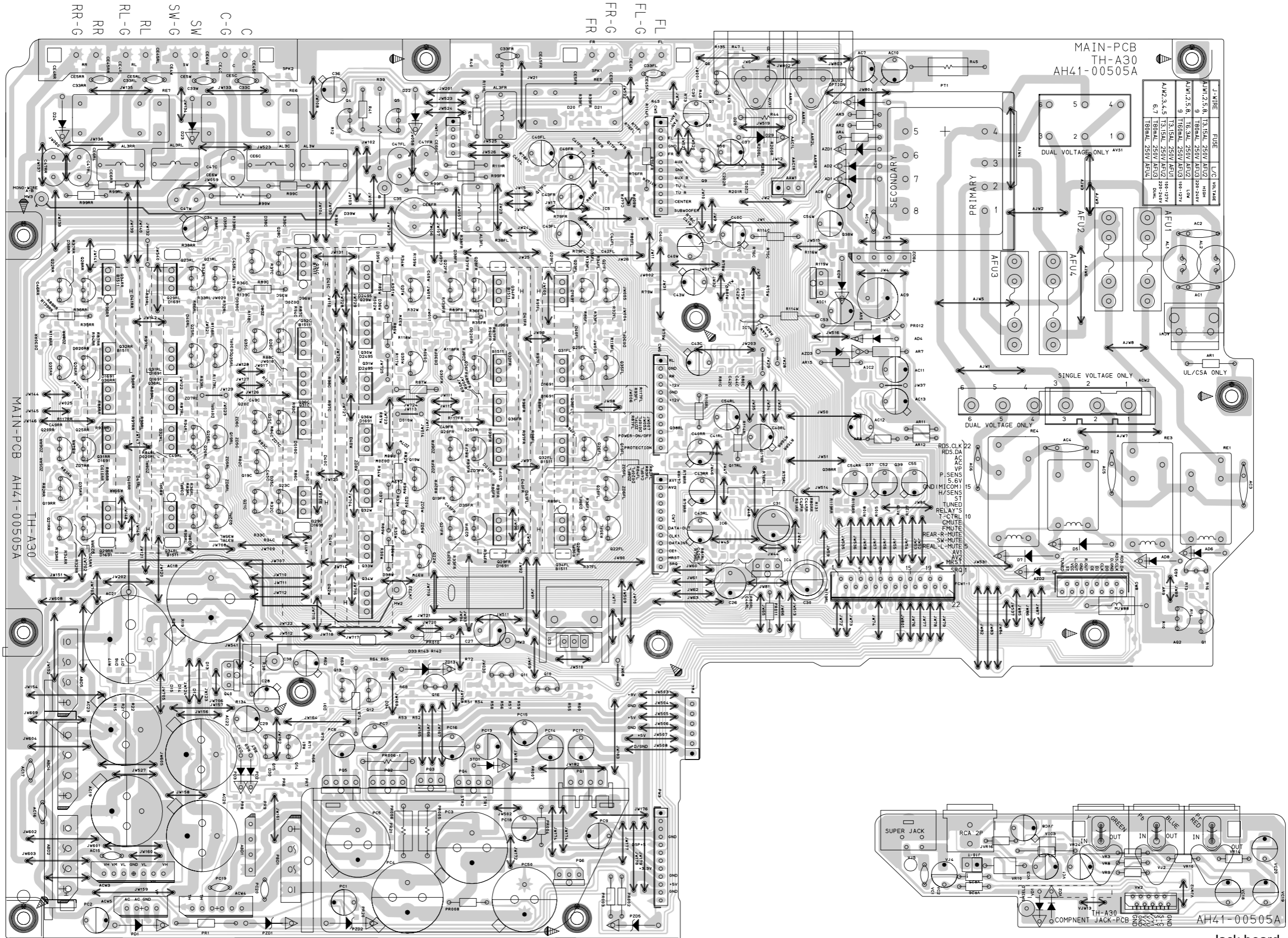
5

4

3

2

1



A

B

C

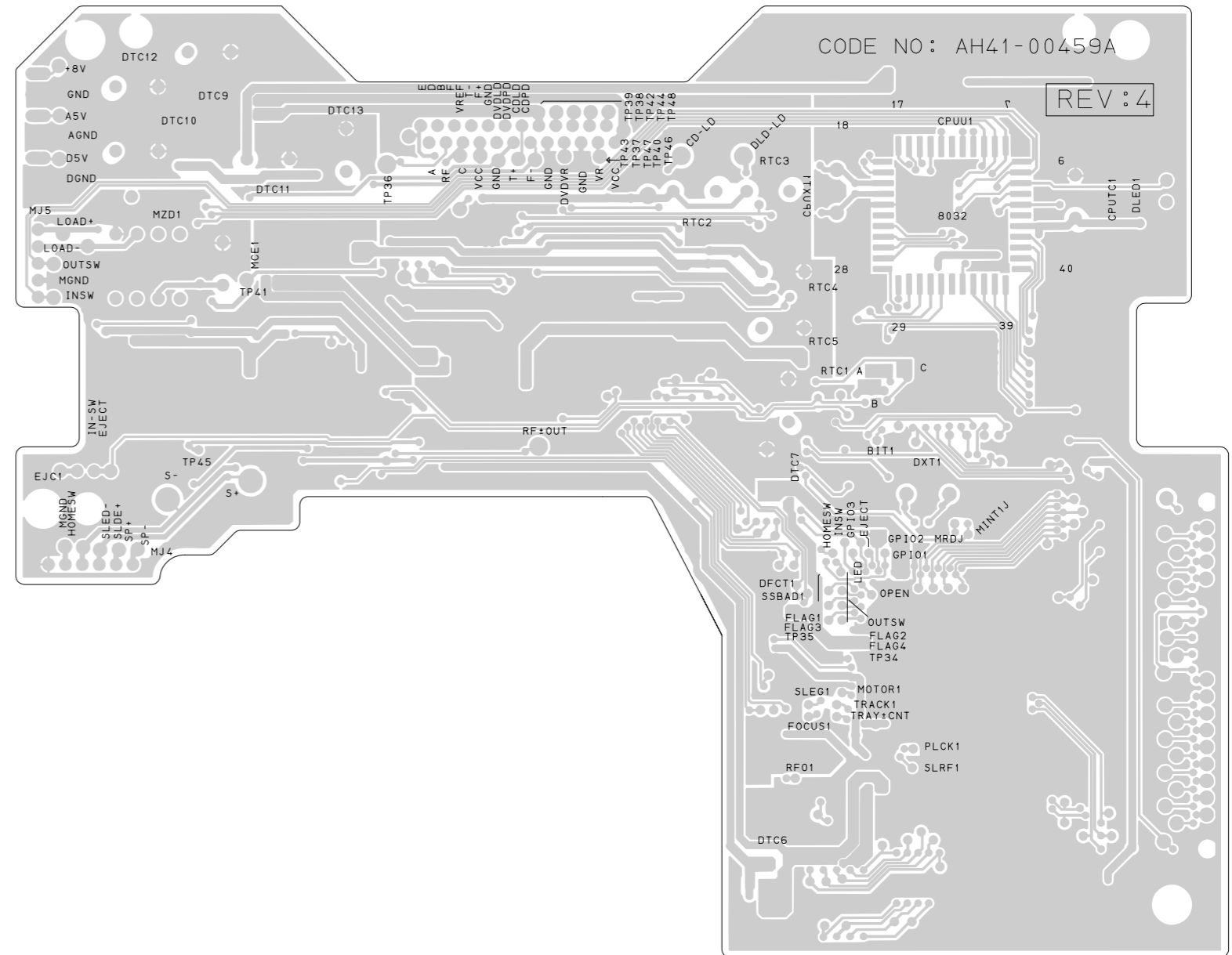
D

E

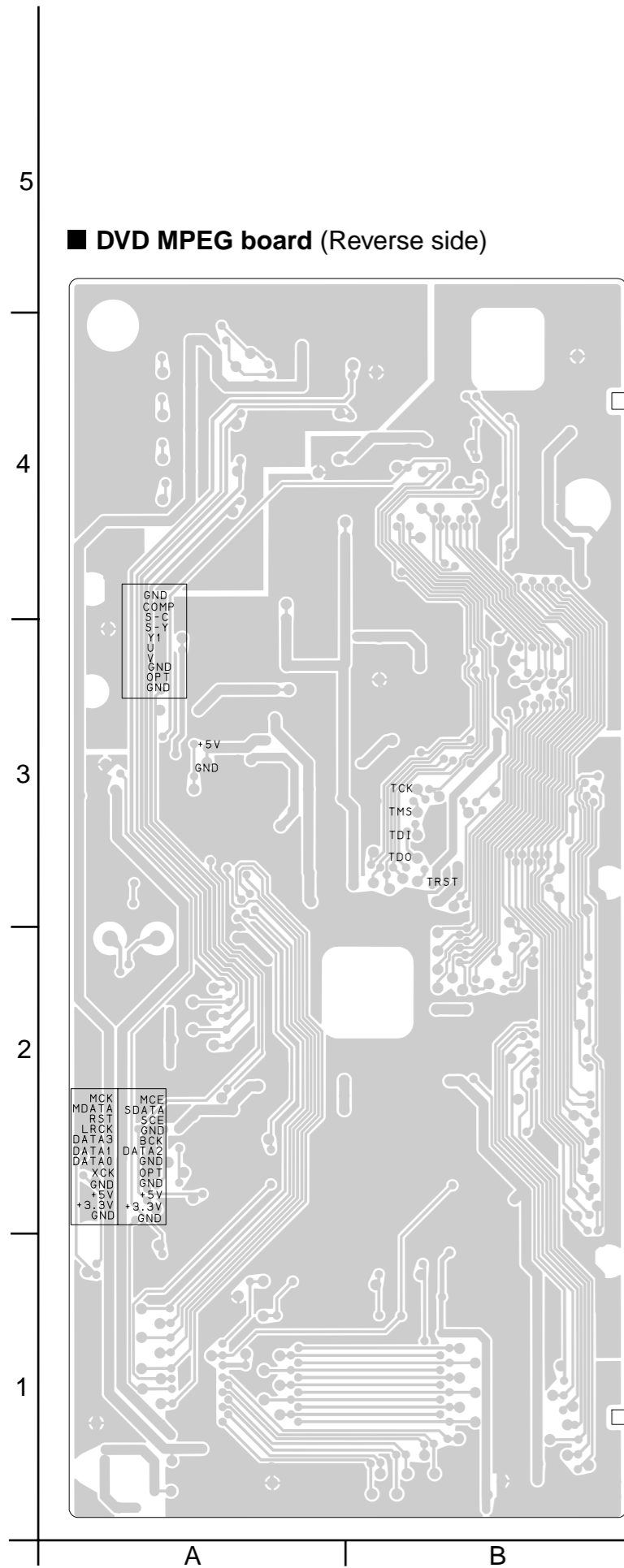
F

G

■ DVD loader board (Reverse side)

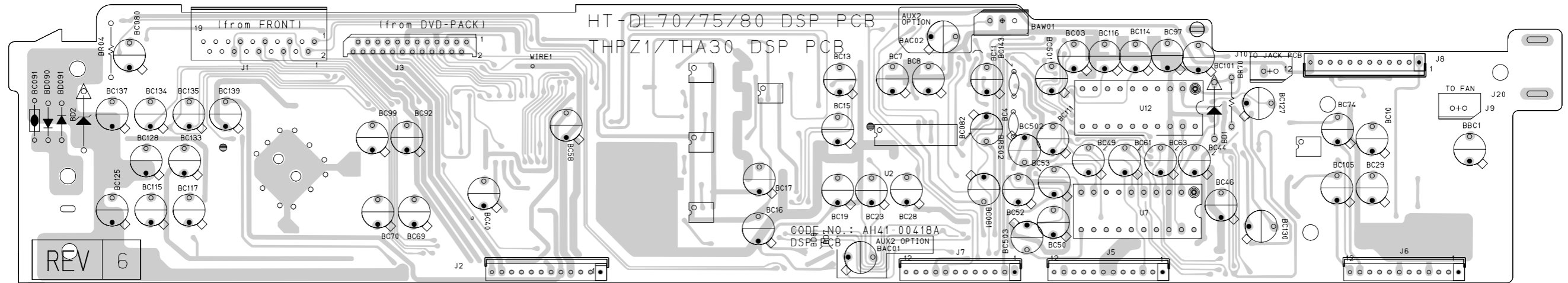


■ DVD MPEG board (Reverse side)

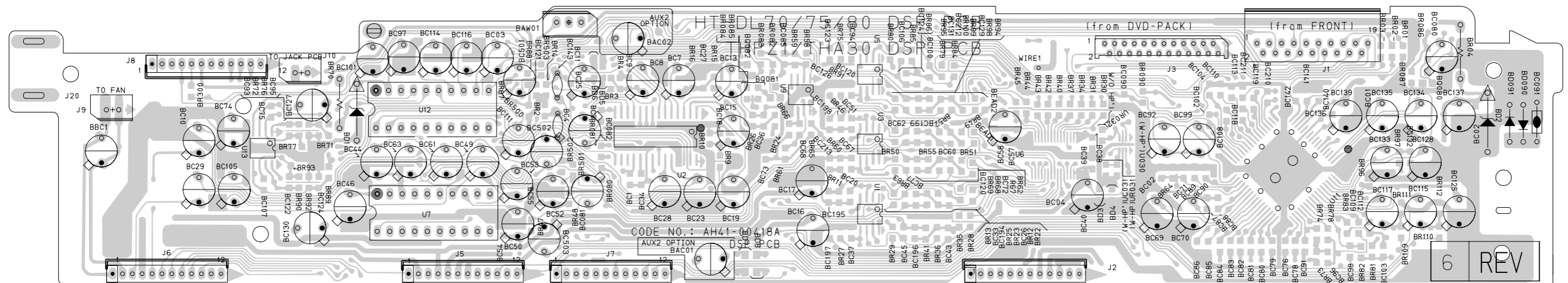


■ DSP board

(Forward side)



(Reverse side)



5
4
3
2
1

A B C 2-10 D E F G H

< MEMO >

JVC

VICTOR COMPANY OF JAPAN, LIMITED

AUDIO & COMMUNICATION BUSINESS DIVISION

PERSONAL & MOBILE NETWORK BUSINESS UNIT. 10-1,1chome,Ohwatari-machi,Maebashi-city,371-8543,Japan