

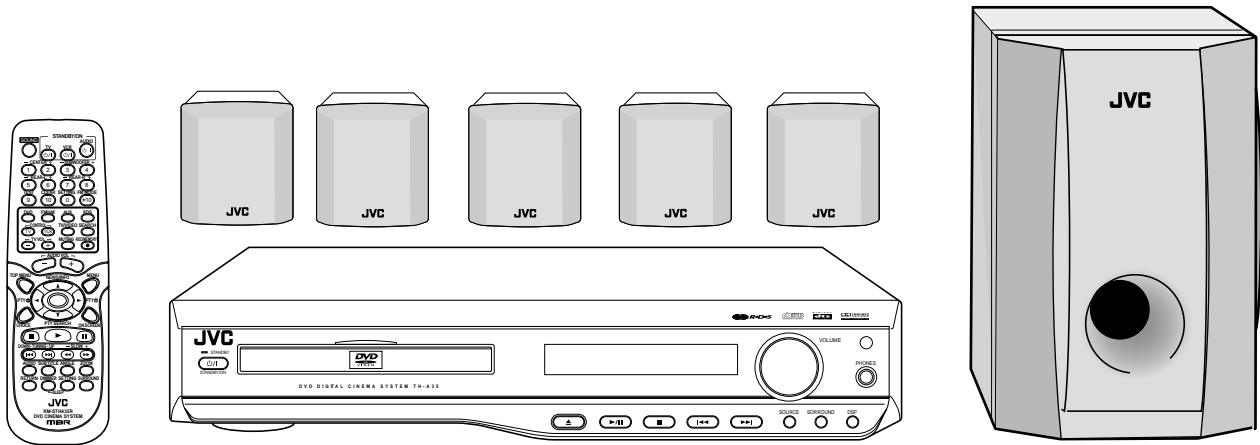
JVC

SCHEMATIC DIAGRAMS

DVD DIGITAL CINEMA SYSTEM

TH-A35

CD-ROM No.SML200306



Area Suffix

E	Continental Europe
EN	Northern Europe
B	U.K.
EV	E. Europe/Russia

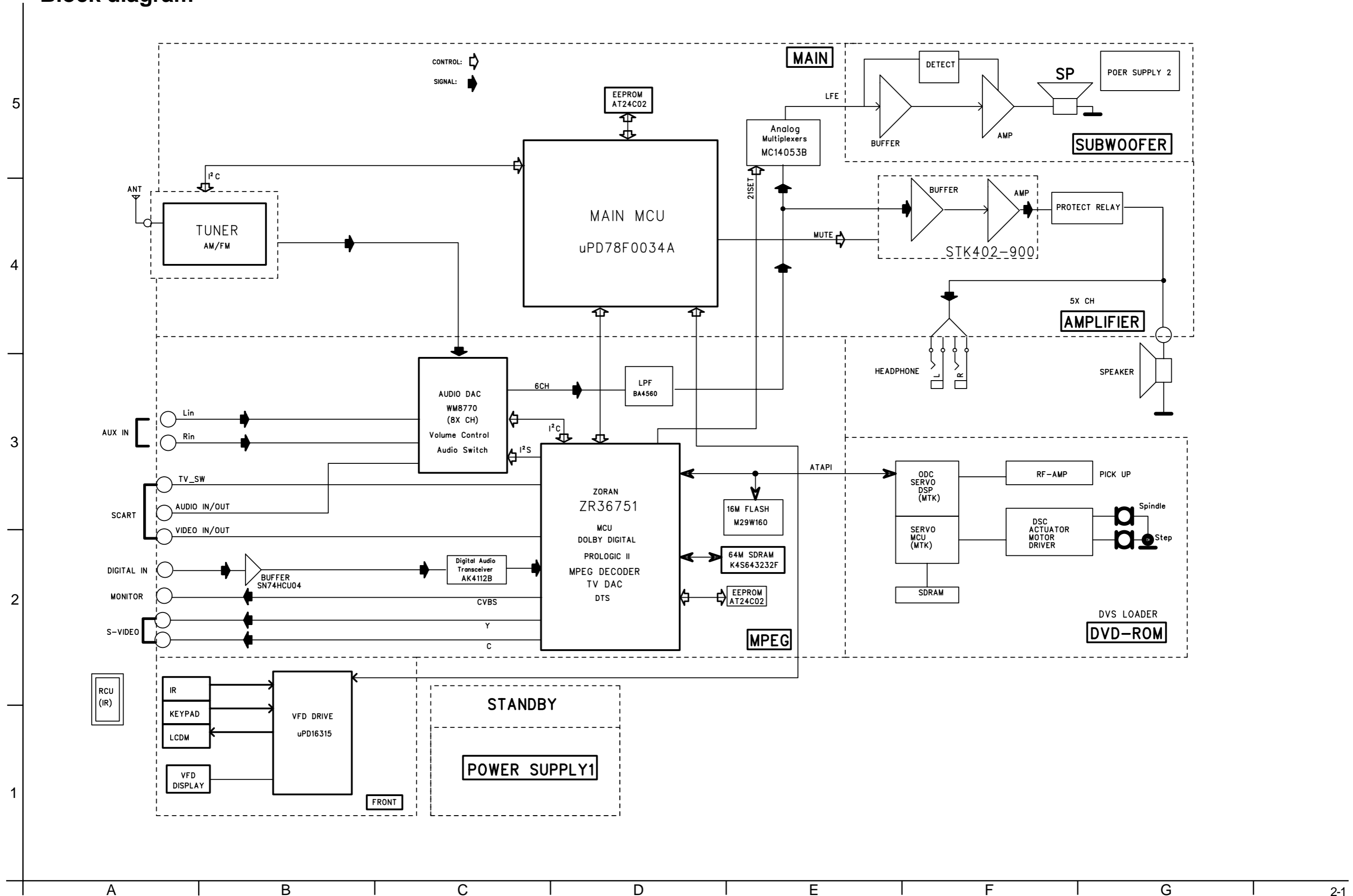
Contents

Block diagram	2-1
Standard schematic diagrams	2-2
Printed circuit boards	2-9~2-16

In regard with component parts appearing on the silk-screen printed side (parts side) of the PWB diagrams, the parts that are printed over with black such as the resistor (■), diode (⚡) and ICP (●) or identified by the "⚠" mark nearby are critical for safety.

(This regulation does not correspond to J and C version.)

Block diagram



Standard schematic diagrams

MCU and AMPLIFIER SECTION

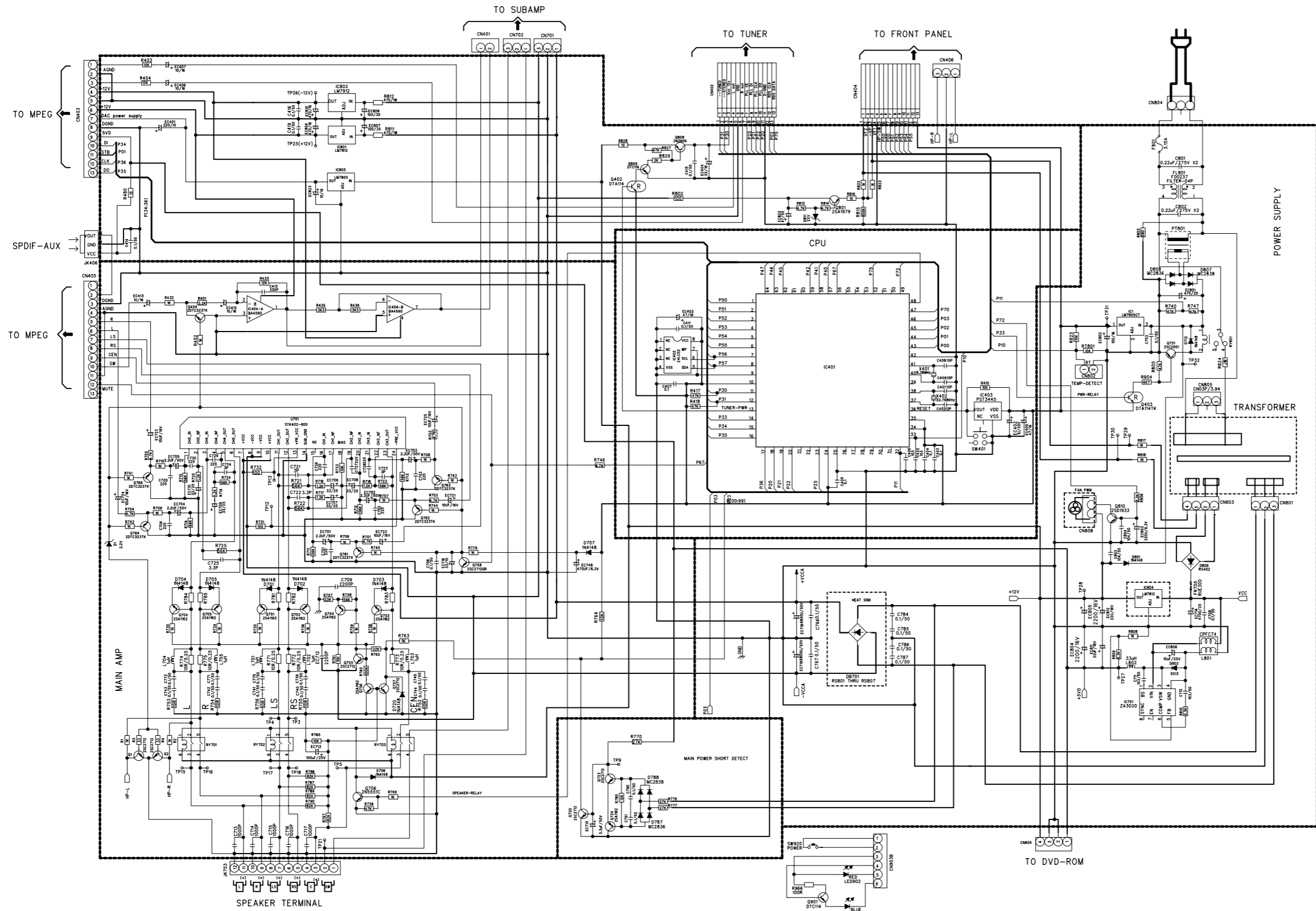
5

4

3

2

1



A

B

C

2-2

D

E

F

G

H

AUDIO CODEC and AUDIO/VIDEO POST

ONLY FOR E-VERSION SCART LINE OUT!
TO WM8770(U1)

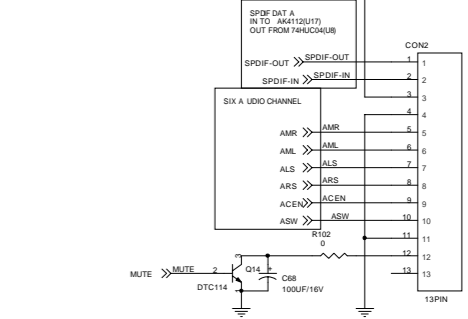
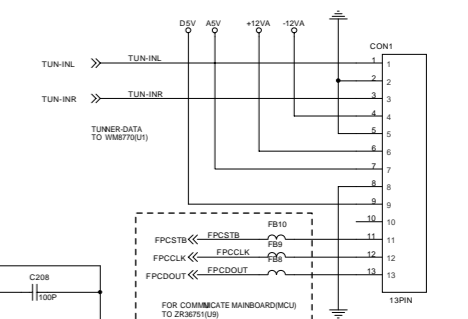
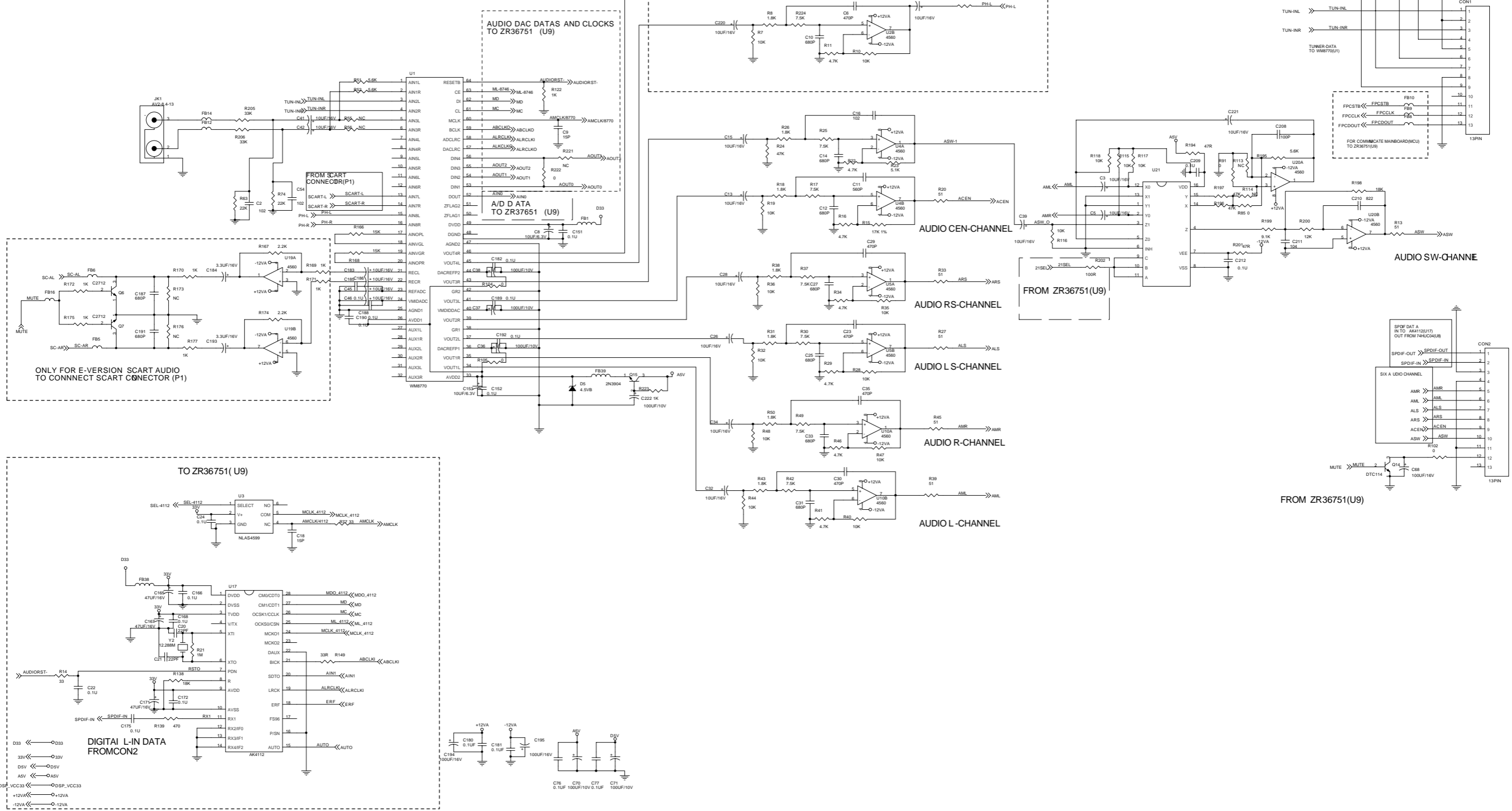
5

4

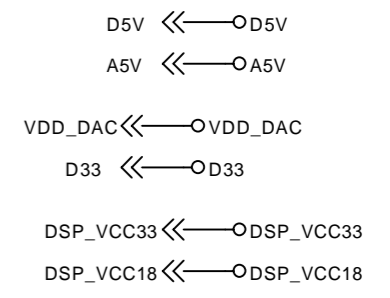
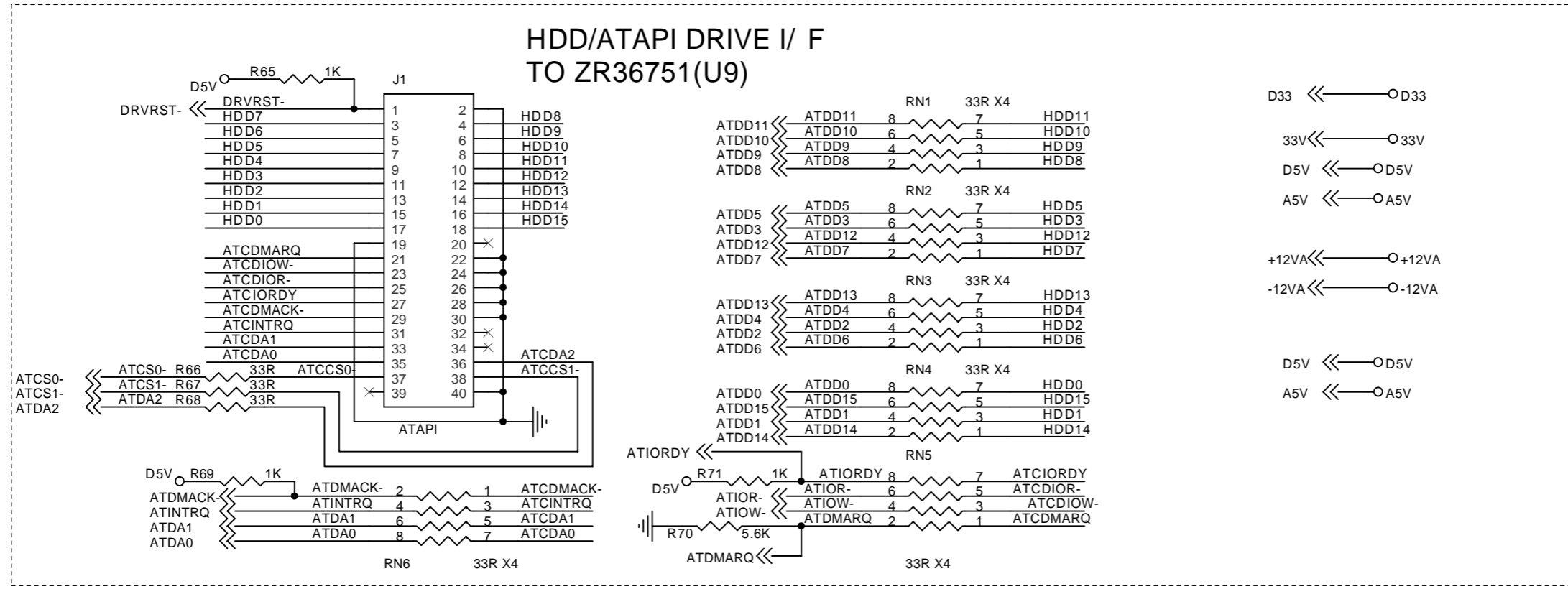
3

2

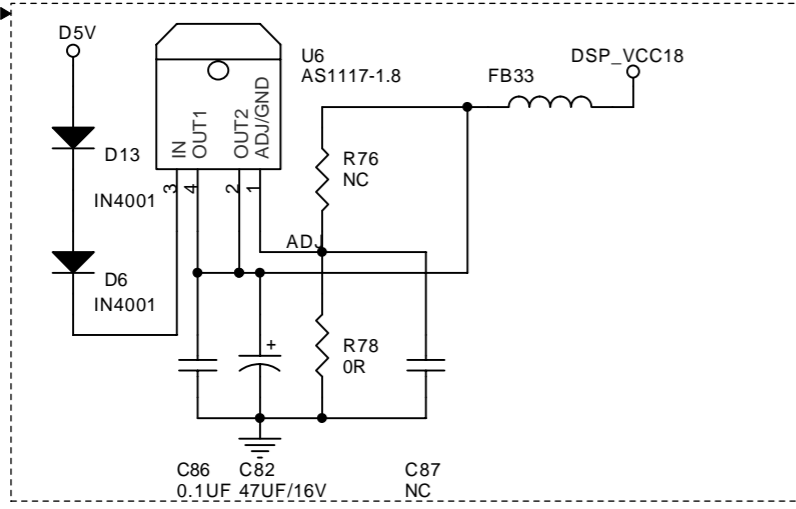
1



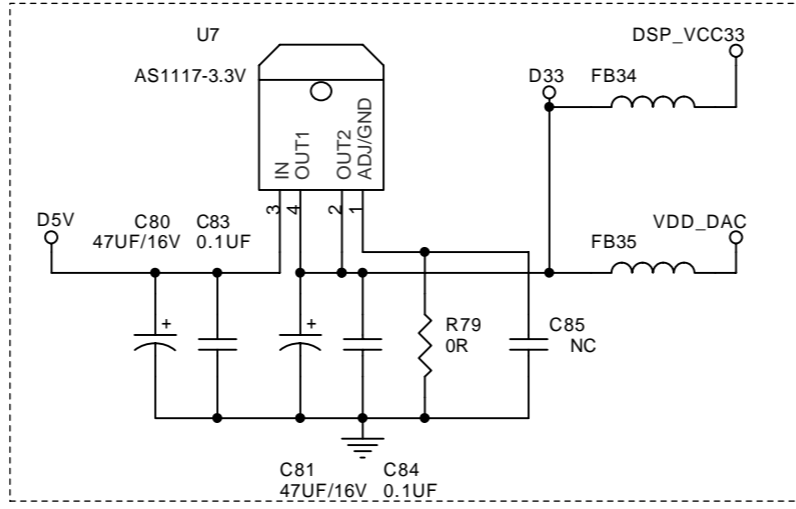
■ DRIVE I/F



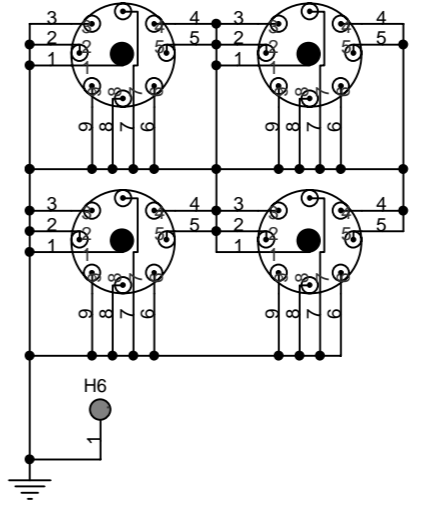
POWER



1.8V ADJ REGULATO R

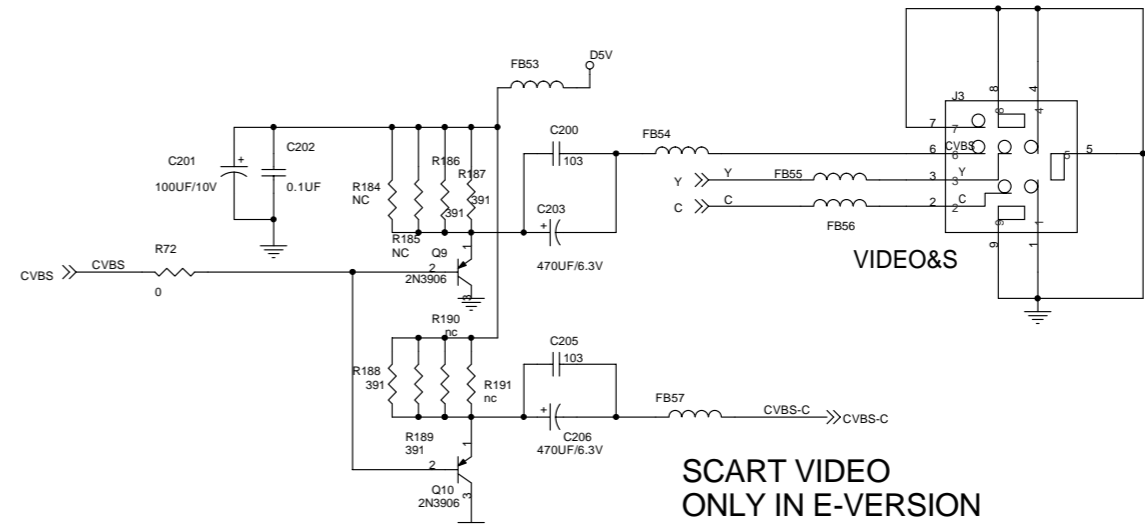
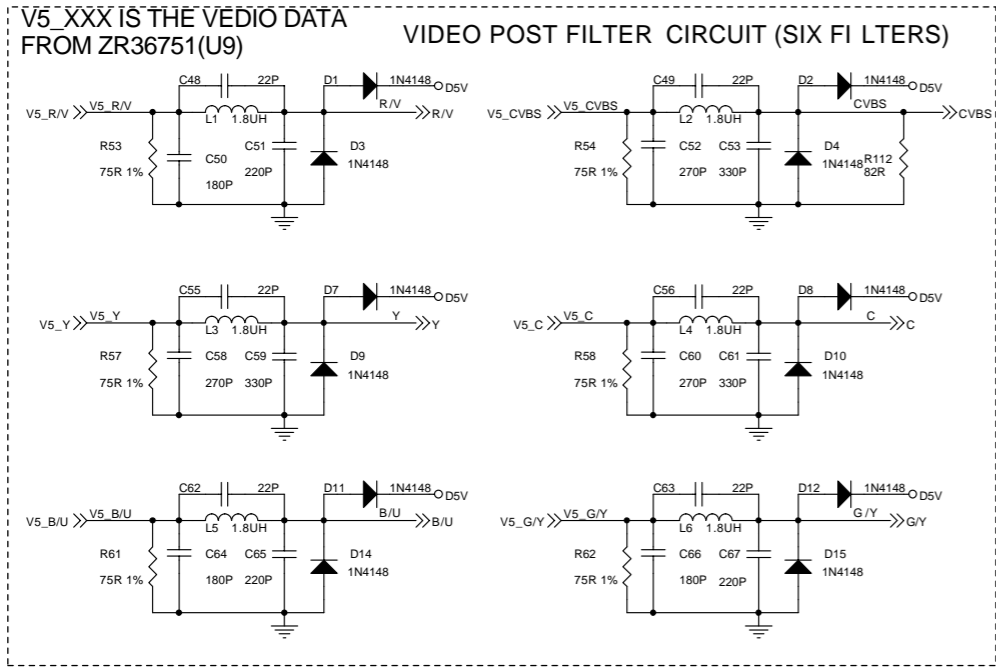


3.3V FIXED/ADJ REGULATO R

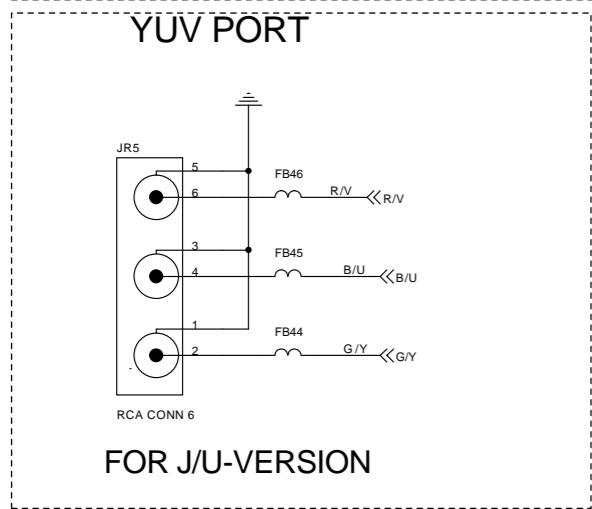
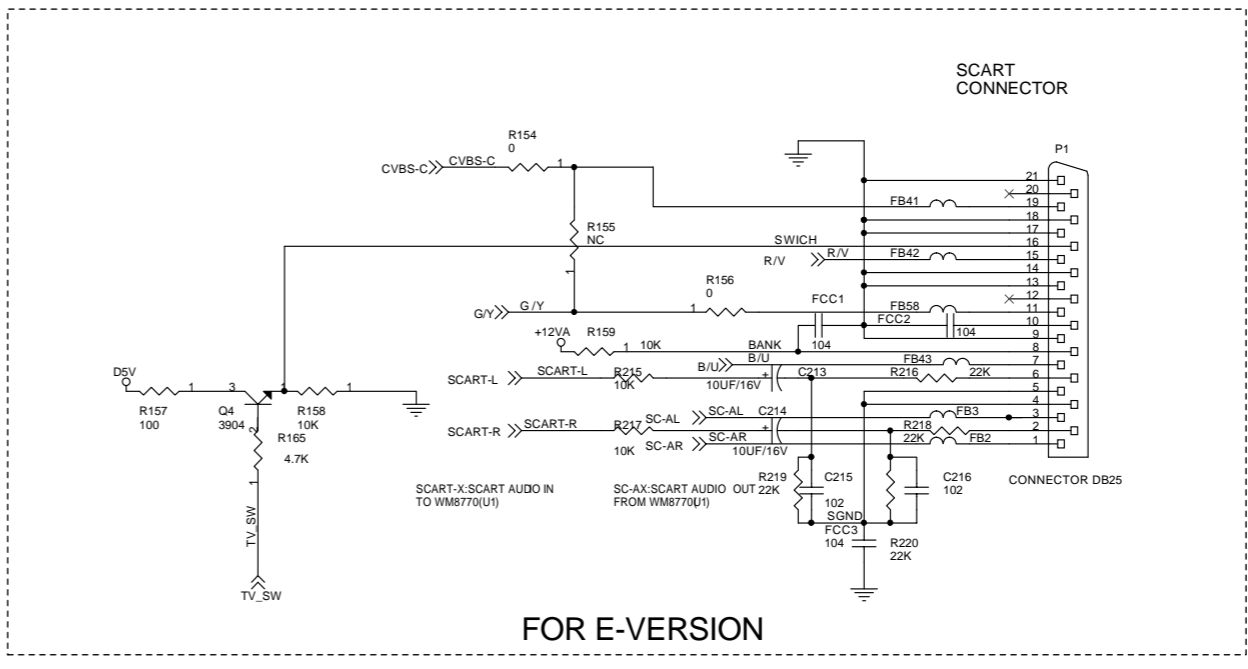
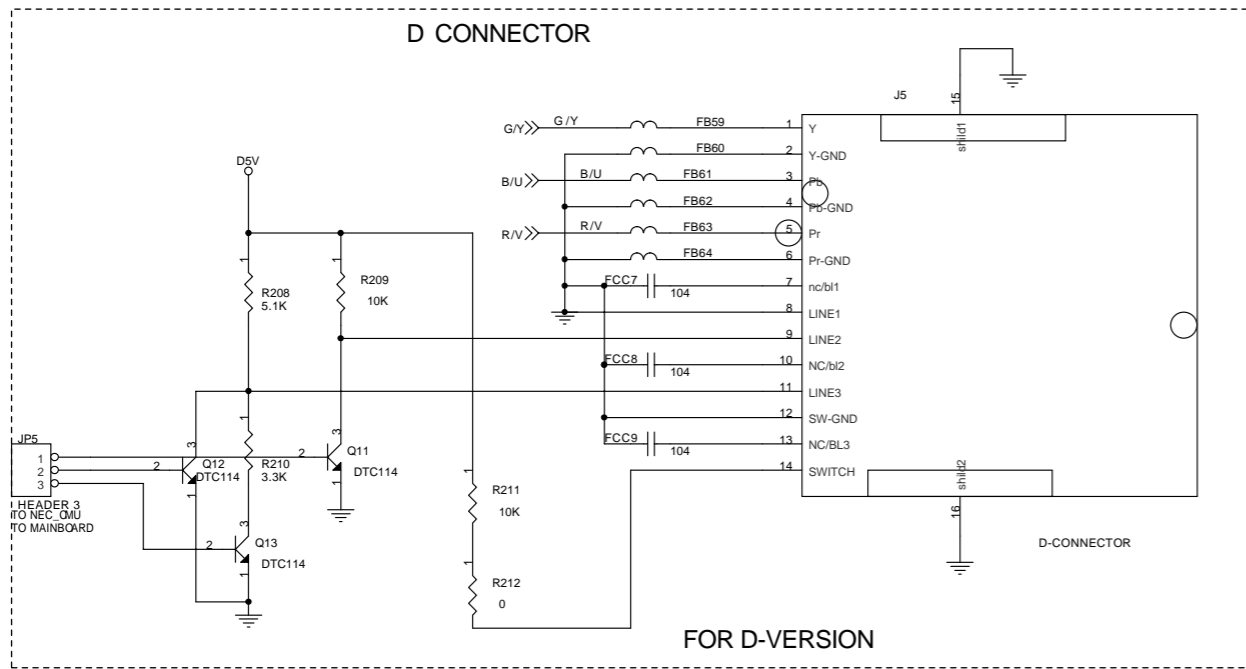


NOTE:IF U6 IS ADJUSTED(THE MARKED NOT 1.8,
 THEN R76=2K,R78=1K
 IF U6 IS AS1117-1.8(DIRECT1.8V OUTPUT)
 THEN R76=NC R78=0R
 PLACE 1.8V REGULATOR CLOSE TO ZR 36751

VIDEO_OUT and POWER SECTION

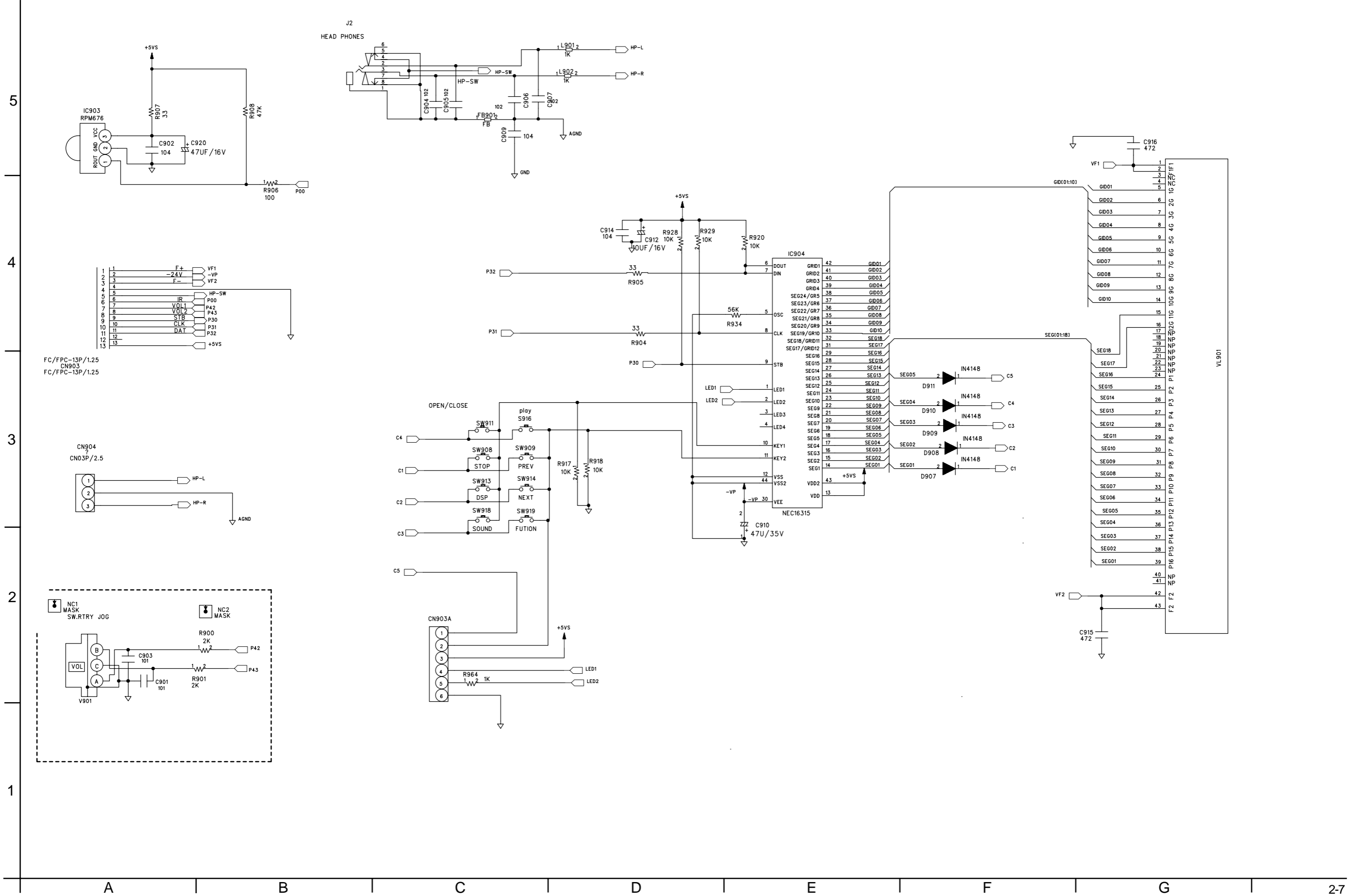


OPTION BOARD

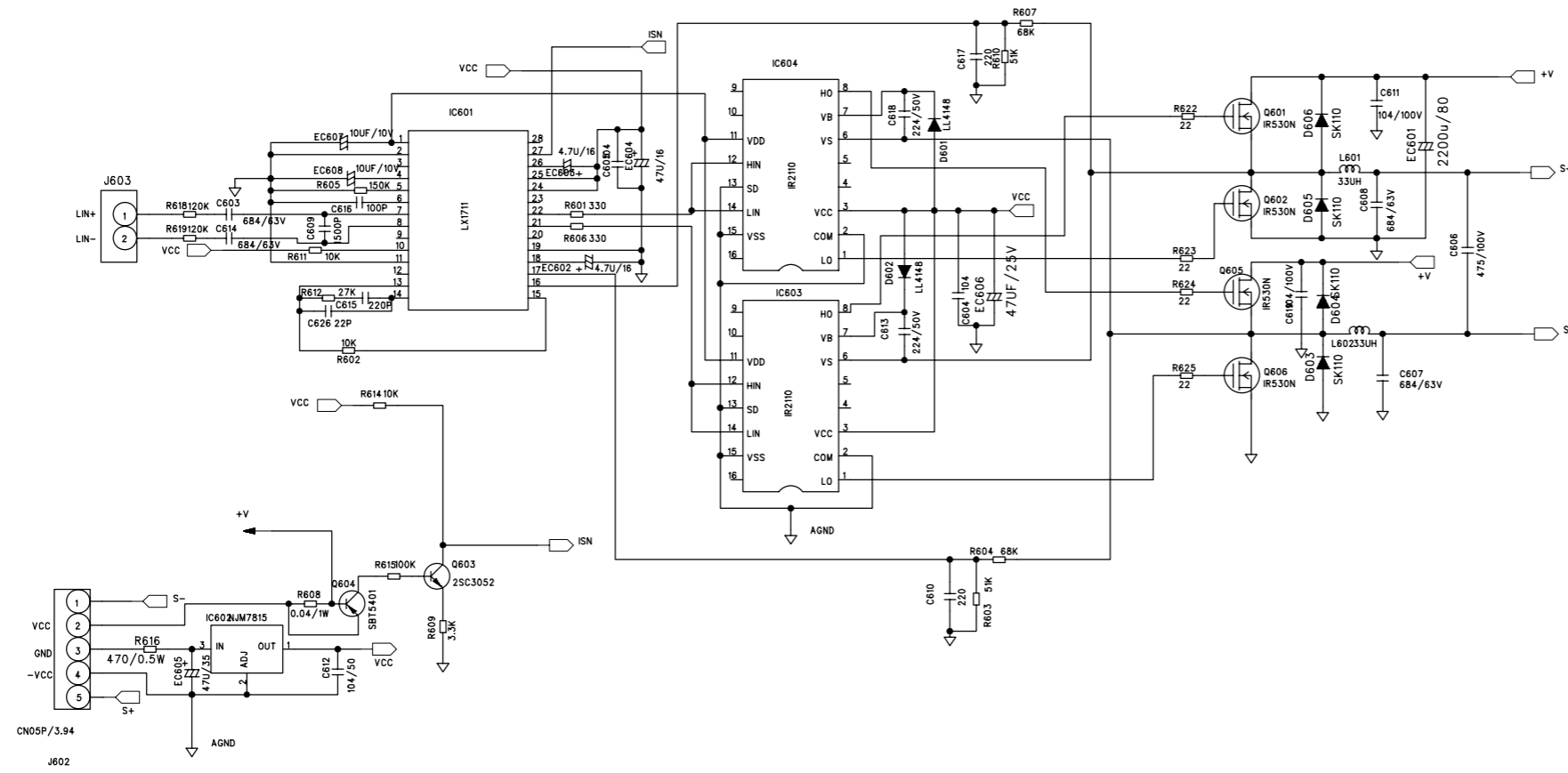


5
4
3
2
1

■ FL DISPLAY and CONTROL



SUBWOOFER SECTION

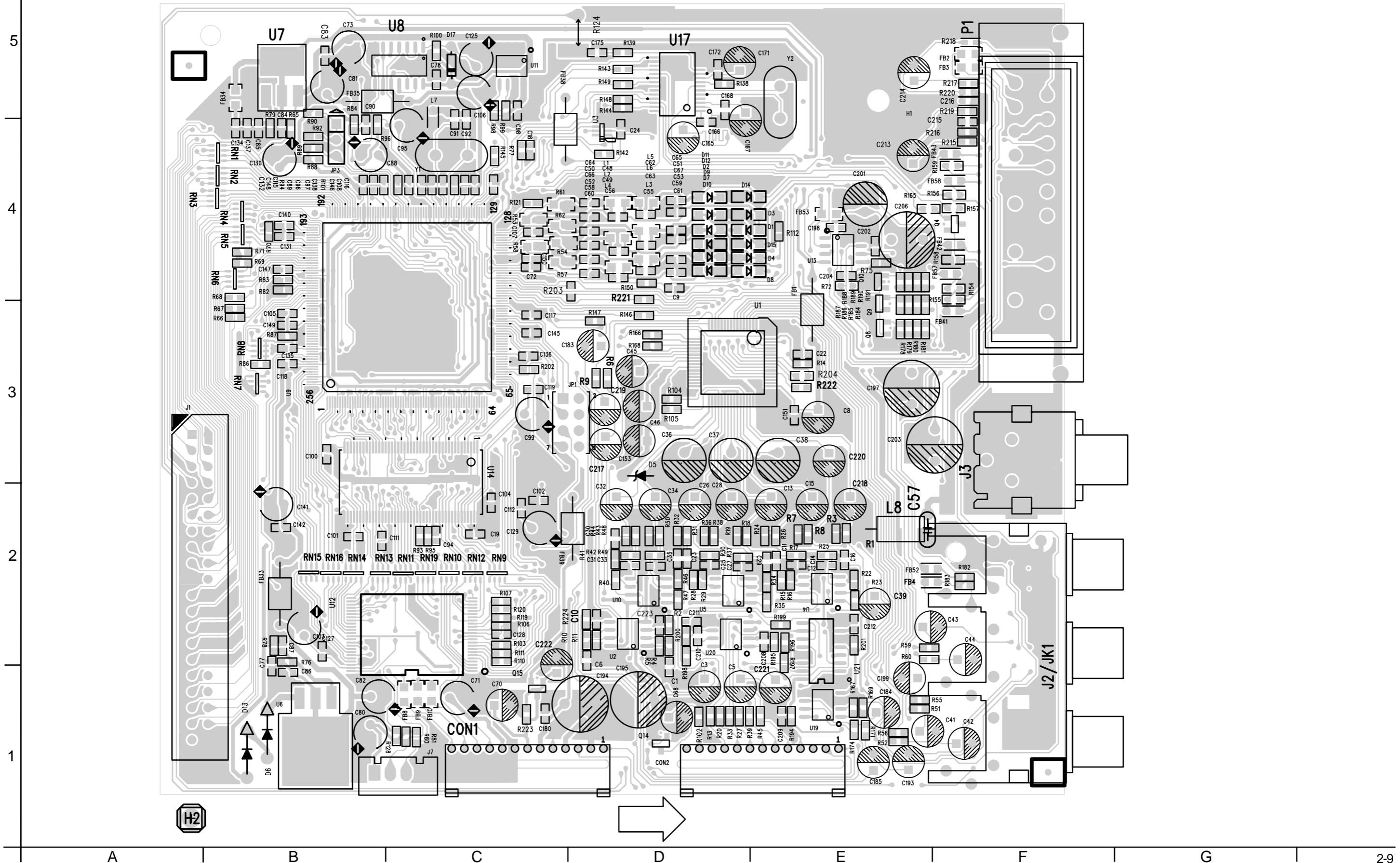


5
4
3
2
1

A B C 2-8 D E F G H

Printed circuit boards

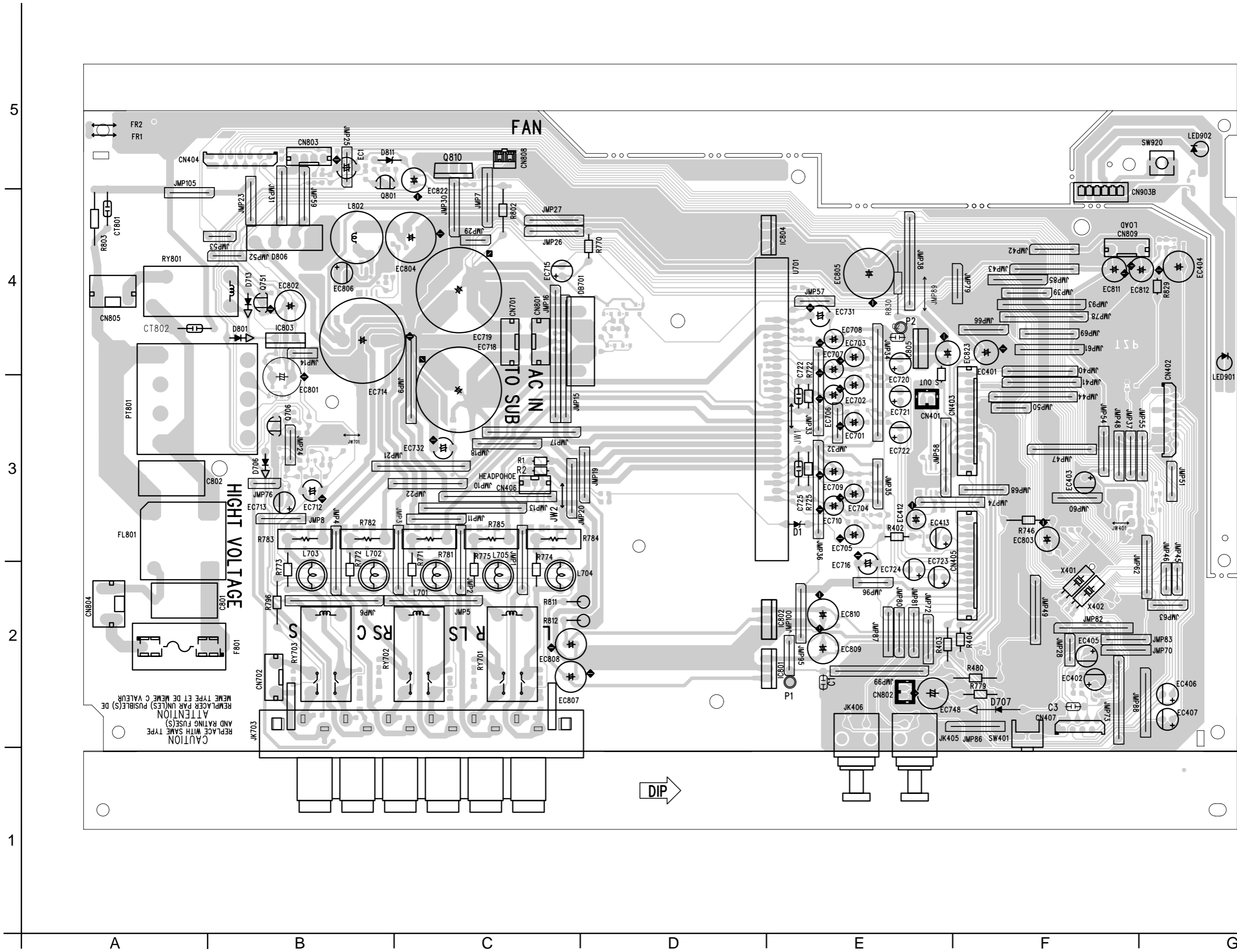
■ MPEG TOP PWB



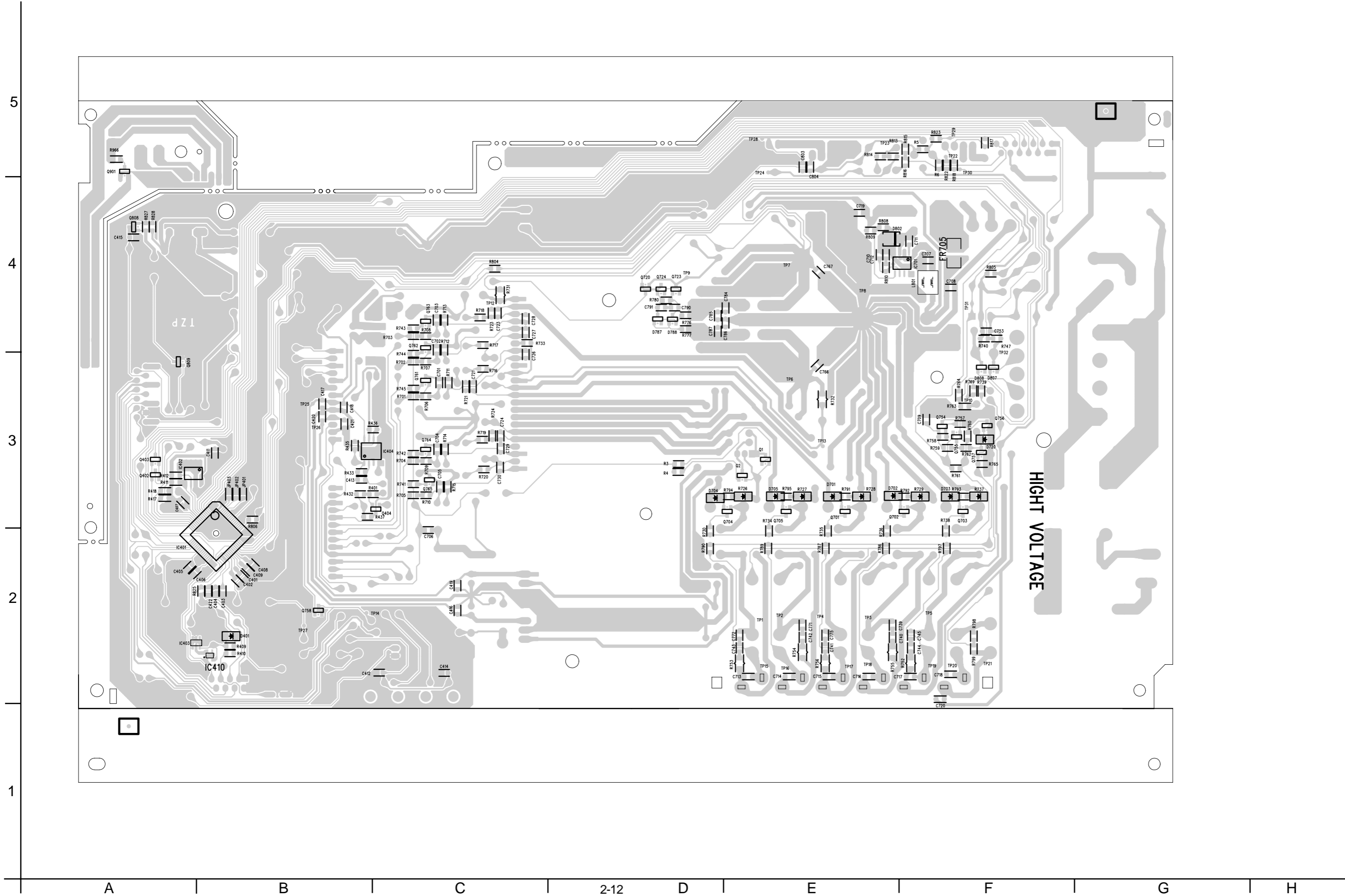
■ MPEG BOTTOM PWB



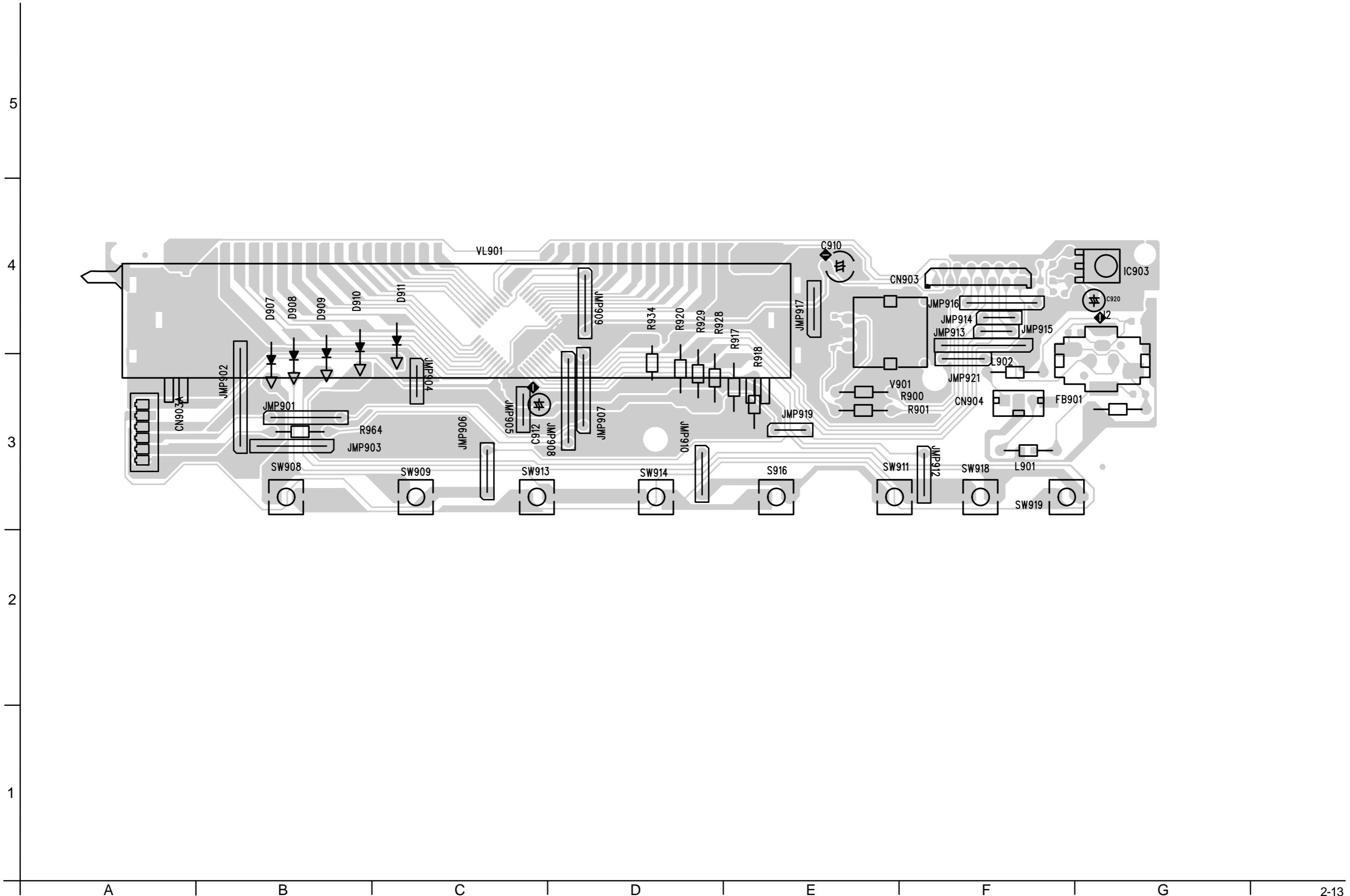
MAIN TOP PWB



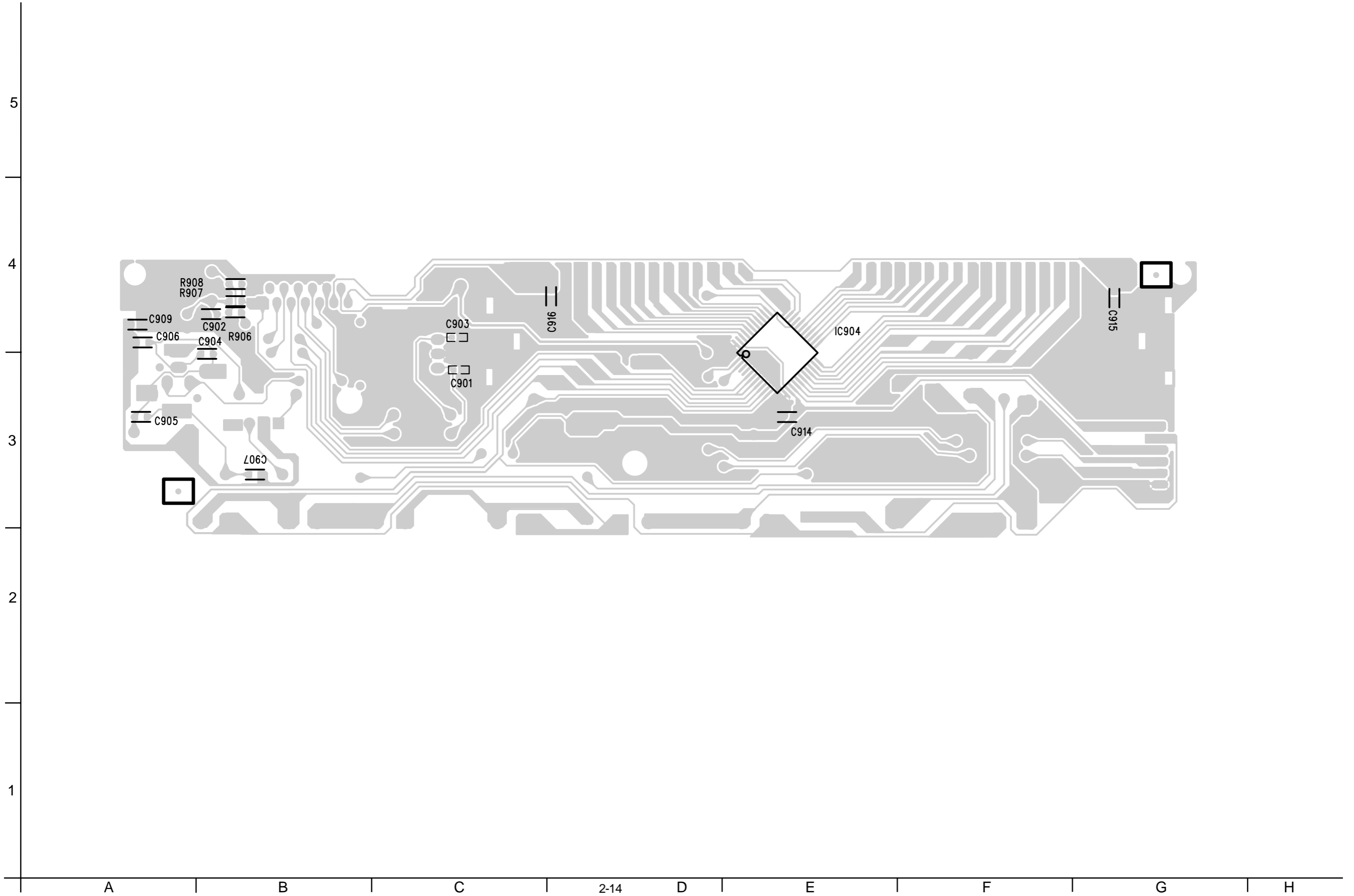
■ MAIN BOTTOM PWB



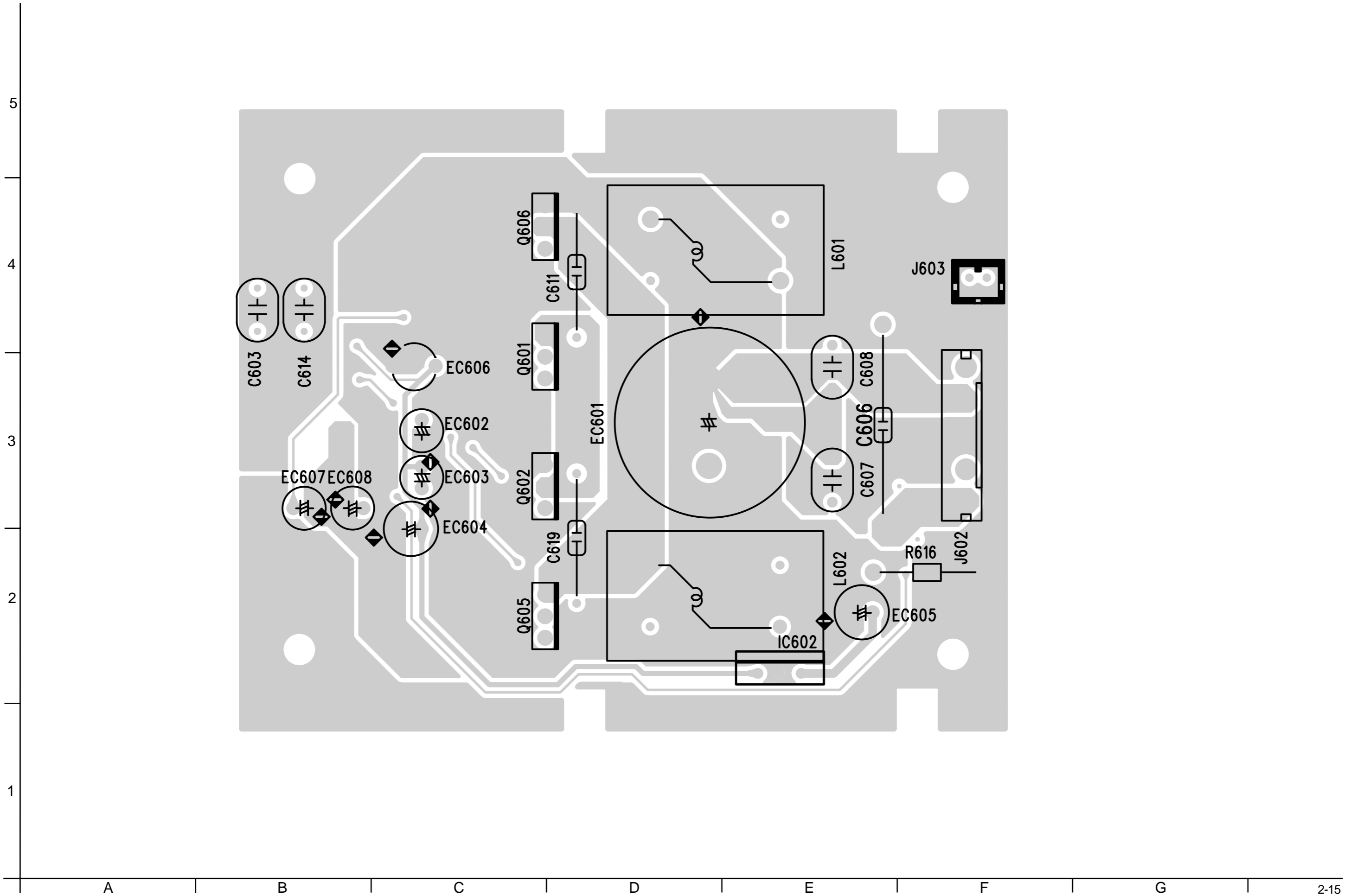
■ FRONT TOP PWB



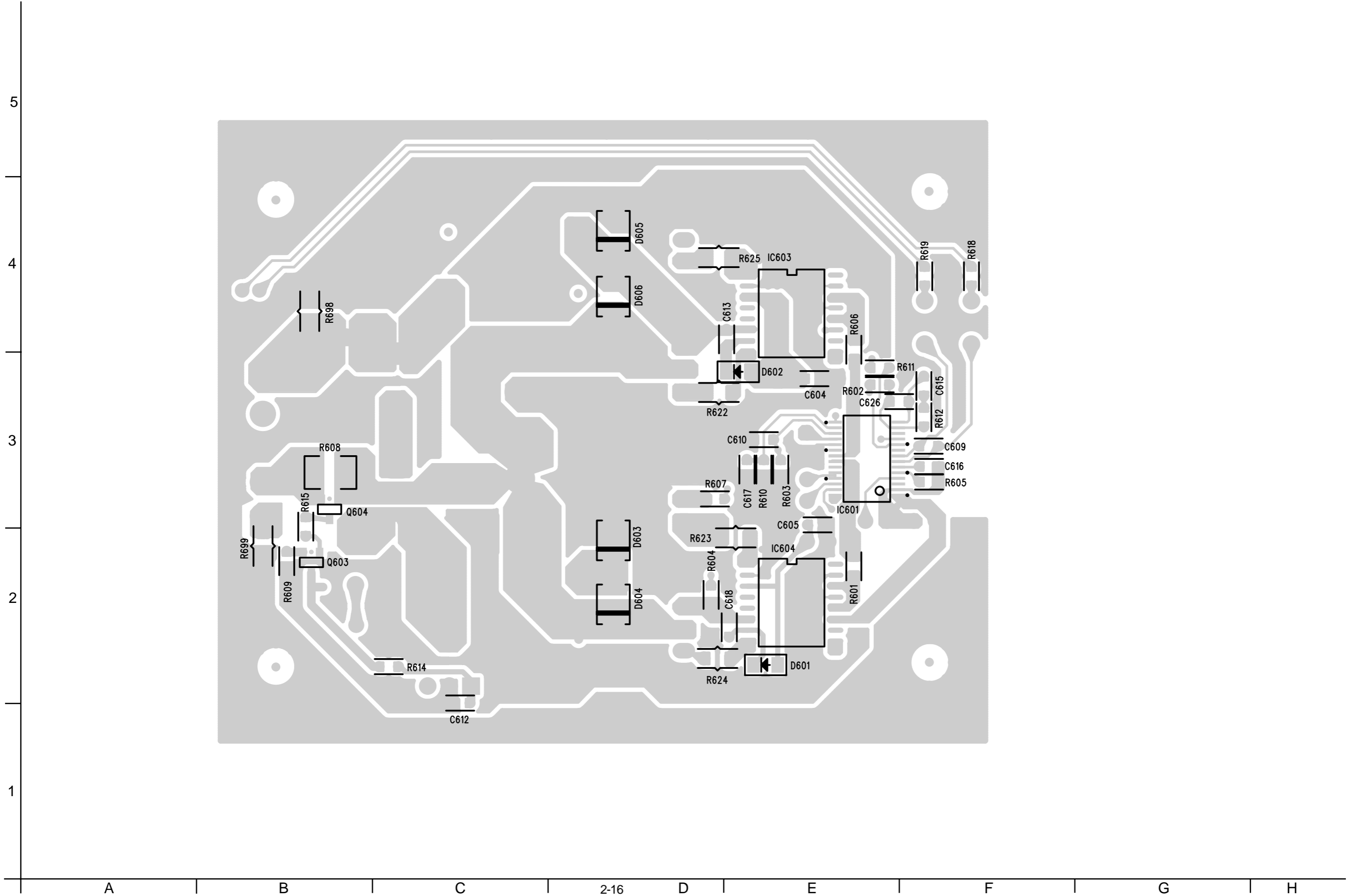
■ FRONT BOTTOM PWB



■ SUBWOOFER TOP PWB



■ SUBWOOFER BOTTOM PWB



< MEMO >

JVC

VICTOR COMPANY OF JAPAN, LIMITED

AV & MULTIMEDIA COMPANY AUDIO/VIDEO SYSTEMS CATEGORY 10-1,1Chome,Ohwatari-machi,Maebashi-city,371-8543,Japan

PARTS LIST

[TH-A35]

* All printed circuit boards and its assemblies are not available as service parts.

Area suffix	
B	U.K.
E	Continental Europe
EN	Northern Europe
EV	Eastern Europe

- Contents -

Exploded view of general assembly and parts list (Block No.M1)	3-3
Electrical parts list (Block No.01~05)	3-5
Packing materials and accessories parts list (Block No.M3,M5)	3-8

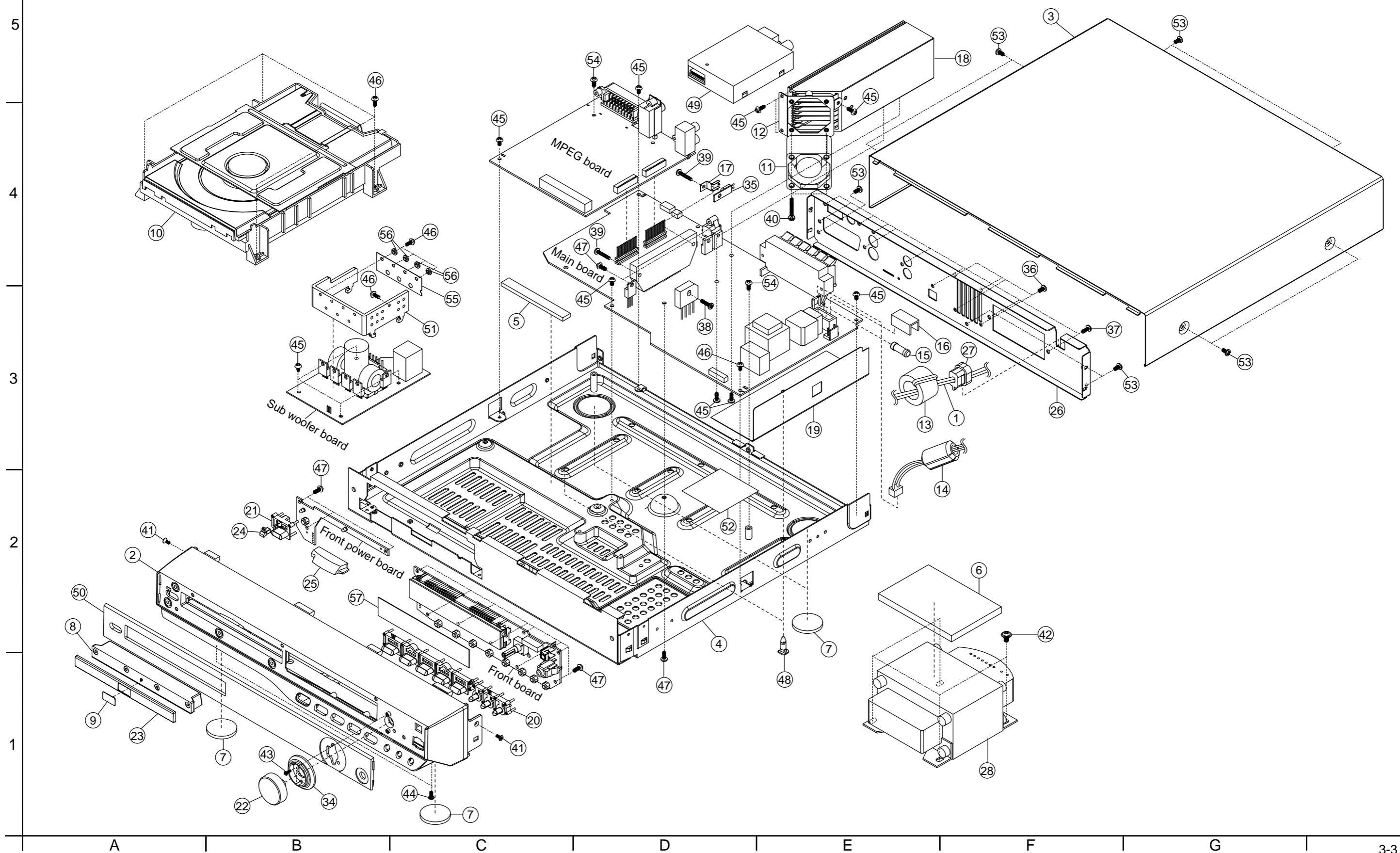
- Note-

Parts number of normal capacitors and normal resistors doesn't listed on the parts list

< M E M O >

Exploded view of general assembly and parts list

Block No. M 1 M M



TH-A35

TH-A35

■ Parts list (General assembly)

Block No. M1MM

■ Parts list (General assembly)

Block No. M1MM

⚠	Item	Parts number	Parts name	Q'ty	Description	Area
⚠	1	BI1401171	AC-CORD	1		E,EN,EV
⚠		BI1401202U	AC-CORD	1		B
	2	BI107373020101	FRONT CABINET	1		
	3	BI202514010101	TOP CABINET	1		
	4	BI202516010101	CHAS MAIN	1		
	5	BI301968010101	COPPER CLOTH PA	1		
	6	BI301935010101	CUSHION-PT	1		
	7	BI301934010101	CUSHION FOOT	4		
	8	BI107381010101	DVD DOOR	1		
	9	BI107499010101	DVD LOGO	1		
	10	BI3800111U	DVD MECHA	1	DSL-710A	
	11	BI2400131	FAN4028	1	RDH4028S	
	12	BI202518010101	FAN HLDR	1		
	13	BI18A00401	FERRITE RING	1	M193120190H3	
	14	BI18A00411U	FERRITE TUBE	1	ECRK7-CA2G-B	
	15	BI403101	FUSE	1	F801/.T3.15AL 250V	
	16	BI202591010101	FUSE COVER	1	F801	
	17	BI202603010101	HLDR THERM-R	1	SUS304	
	18	BI202519010101	HT SINK-MAIN	1	6063-T5	
	19	BI301936010101	INSULATION PLATE	1		
	20	BI107378010101	KEY FUNC	1		
	21	BI107380010101	KEY POWER	1		
	22	BI107376010101	KNOB VOL	1		
	23	BI107375010101	LENS DOOR-DVD	1		
	24	BI107529010101	LENS POWER	1		
	25	BI107447010101	LENS REFRACT	1		
	26	BI202515011101	REAR PANEL	1		B,E,EN
		BI2025150211U1	REAR PANEL	1		EV
⚠	27	BI301789010101	PINCERS	1		
⚠	28	BI2110110380010	POWER TRANS	1	230V 50HZ	
	34	BI107377010101	RING VOL	1		
	35	BIRT103THMSP015	THMS	1		
	36	BIBT000604P1	SCREW	4	M3X6MM SILVER	
	37	BIBT000605P1	SCREW	9	M3X8MM SILVER	
	38	BIBT000649	SCREW	1	3X12	
	39	BIBT000654	SCREW	2	3X16	
	40	BIBT000645	SCREW	2	3X30	
	41	BIKM000301	SCREW	2	23X6	
	42	BIPMW001101S31	SCREW	4	4X8	
	43	BIPT000203	SCREW	2	2X6	
	44	BIPT000626	SCREW	2	3X6	
	45	BIRT000604S3	SCREW	13	3X6	
	46	BIRT000624S3	SCREW	10	3X8	
	47	BIRT000611B3	SCREW	15	M3X8 YELLOW	
	48	BI301937010101	SPACER	2	NYLON66	
	49	BIZ25091801V	TUNER-BOX	1	KST-MV114MA1-B	
	50	BI107374020101	WINDOW DISP	1		
	51	BI202521010101	HEAT SINK	1		

⚠	Item	Parts number	Parts name	Q'ty	Description	Area
	52	BI302019010101U1	INSULATION PLATE	1		
	53	BIBT000604S1	SCREW	9	M3X6MM SILVER	
	54	BIRT000606S3	SCREW	2	3X8	
	55	BI301939010101	SILICONE RUBBER	1		
	56	BI301752010101U1	WASHER	4		
	57	BI107500010101	VFD FILTER	1		

■ Electrical parts list (Main board)

Block No. 01

△	Item	Parts number	Parts name	Remarks	Area
△	C 801	BICT224275M	CAPACITOR	0.22UF 275V	
△	C 802	BICT224275M	CAPACITOR	0.22UF 275V	
	CN402	BI12S130034	CONNECTOR	13P FFC/FPC P=1.25	
	CN403	BI12S130031	HEADER	13PINS P=2.0	
	CN404	BI12S130027	FFC CONNECTOR	13P V FFC/FPC P=1.25	
	CN405	BI12S130031	HEADER	13PINS P=2.0	
	CN406	BI12S30063	SOCKET CONNECTOR	3PINS	
	CN407	BI12S80037	FF-CABLE SOCKET	8PINS	
	CN801	BI12P30221	CONNECTOR	3PINS L=80MM	
	CN802	BI12S200161	SOCKET CONNECTOR	2PINS SOCKET	
	CN803	BI12S40072	SOCKET CONNECTOR	4PINS	
	CN804	BI12S30068	SOCKET CONNECTOR	3PIN	
	CN805	BI12S30068	SOCKET CONNECTOR	3PIN	
	CN808	BI12S200161	SOCKET CONNECTOR	2PINS SOCKET	
	CN809	BI12P40257U	F-CABLE	4PINS L=50MM	
	D 1	MTZJ2.2B	ZENER DIODE	BI3MTZJ2.2BM000	
	D 701	LL4148	SMD SWITCH DIODE	BI3LL4148A018	
	D 702	LL4148	SMD SWITCH DIODE	BI3LL4148A018	
	D 703	LL4148	SMD SWITCH DIODE	BI3LL4148A018	
	D 704	LL4148	SMD SWITCH DIODE	BI3LL4148A018	
	D 705	LL4148	SMD SWITCH DIODE	BI3LL4148A018	
	D 706	IN4148	DIODE	BI31N4148M000	
	D 707	IN4148	DIODE	BI31N4148M000	
	D 713	IN4148	DIODE	BI31N4148M000	
	D 720	LL4148	SMD SWITCH DIODE	BI3LL4148A018	
	D 787	MC2836	SMD C-DIODE	BI3MC2836A002	
	D 788	MC2838	SMD C-DIODE	BI3MC2838A002	
	D 801	IN4148	DIODE	BI31N4148M000	
	D 802	SS13	SMD SCHOTTKY DIODE	BI3SS13A008	
	D 806	RS402	C-DIODE	3RS4021	
	D 807	MC2838	SMD C-DIODE	BI3MC2838A002	
	D 808	MC2836	SMD C-DIODE	BI3MC2836A002	
	D 811	MTZJ22B	ZENER DIODE	BI3MTZJ22BM000	
	DB701	BI3RS8021	BRIDGE RECTIFIER	8A/100V	
△	F 801	BI403101	FUSE	T3.15AL 250V	
△	FL801	BI2601081	INDUCTOR	10MH	
△	FR705	BIRC0040N15A008	C-RESI	0.04 OHM 1W	
	IC401	UPD780034	U-COM	BI115051	
	IC402	AT24C02	IC	BI111731	
	IC403	BD4744G	IC.RESET	BI115871	
	IC404	NJM4560	IC	BI112971	
	IC701	BI2023260101	HEAT SINK		
	IC701	ZA3020	IC	BI113451	
	IC801	7812	IC	BI113041	
	IC802	7912	IC	BI113051	
	IC803	KA7805	IC	BI102026	
	IC804	L7812CV	IC	BI115341	
	IC805	KA7805	IC	BI102026	
	JK406	BI23F0481	OPTICAL RX	MOF-R3C3	
	JK703	BI2301281	SPEAKER TERMINAL	6CH	
	L 701	BI2600702	CHOCK COIL	1.0UH	
	L 702	BI2600702	CHOCK COIL	1.0UH	
	L 703	BI2600702	CHOCK COIL	1.0UH	
	L 704	BI2600702	CHOCK COIL	1.0UH	
	L 705	BI2600702	CHOCK COIL	1.0UH	
	L 801	BI2601121	SMD CHOKE COIL	CHOKE COIL DC	
	L 802	BI26A00101	CHOKE	33UH/2A	
	LED91	BI2801081	LED	BLUE DIA 3MM	
	LED92	BI28SLR342VP010	LED	RED	
	PCB	BI251199G03V	MAIN BOARD		
△	PT801	BI211011058001	POWER TRANS	230V EI	
	Q 1	2SC2712GR	TRANSISTOR	BI2SC2712GRA014	
	Q 2	2SC2712GR	TRANSISTOR	BI2SC2712GRA014	

△	Item	Parts number	Parts name	Remarks	Area
	Q 402	DTA114TK	SMD TRANSISTOR	BI2DTA114TKA011	
	Q 403	DTA114TK	SMD TRANSISTOR	BI2DTA114TKA011	
	Q 404	DTC323TK	SMD TRANSISTOR	BI2DTC323TKA011	
	Q 701	2SA1162GR	SMD TRANSISTOR	BI2SA1162GRA014	
	Q 702	2SA1162GR	SMD TRANSISTOR	BI2SA1162GRA014	
	Q 703	2SA1162GR	SMD TRANSISTOR	BI2SA1162GRA014	
	Q 704	2SA1162GR	SMD TRANSISTOR	BI2SA1162GRA014	
	Q 705	2SA1162GR	SMD TRANSISTOR	BI2SA1162GRA014	
	Q 706	2SC2001K	TRANSISTOR	BI2SC2001KP000	
	Q 720	2SC2712GR	TRANSISTOR	BI2SC2712GRA014	
	Q 723	2SC2712GR	TRANSISTOR	BI2SC2712GRA014	
	Q 724	2SA1162GR	SMD TRANSISTOR	BI2SA1162GRA014	
	Q 751	2SC2001K	TRANSISTOR	BI2SC2001KP000	
	Q 754	2SA1162GR	SMD TRANSISTOR	BI2SA1162GRA014	
	Q 755	2SC2712GR	TRANSISTOR	BI2SC2712GRA014	
	Q 756	2SA1162GR	SMD TRANSISTOR	BI2SA1162GRA014	
	Q 757	2SC2712GR	TRANSISTOR	BI2SC2712GRA014	
	Q 758	2SC2712GR	TRANSISTOR	BI2SC2712GRA014	
	Q 761	DTC323TK	SMD TRANSISTOR	BI2DTC323TKA011	
	Q 762	DTC323TK	SMD TRANSISTOR	BI2DTC323TKA011	
	Q 763	DTC323TK	SMD TRANSISTOR	BI2DTC323TKA011	
	Q 764	DTC323TK	SMD TRANSISTOR	BI2DTC323TKA011	
	Q 765	DTC323TK	SMD TRANSISTOR	BI2DTC323TKA011	
	Q 801	2SA1979	TRANSISTOR	BI2SA19790P000	
	Q 808	2N3906	SMD TRANSISTOR	BI2N3906A000	
	Q 809	DTC114EK	SMD TRANSISTOR	BI2DTC114EKA011	
	Q 810	2SD1933	TRANSISTOR	BI2SD19331	
	Q 901	2N3904	SMD TRANSISTOR	BI2N3904A000	
	RT801	BIRT103THMSP015	THMS	10K	
	RY701	BI8RL00191	RELAY	DC 12V ME-7C-012-2H	
	RY702	BI8RL00191	RELAY	DC 12V ME-7C-012-2H	
	RY703	BI8RL00191	RELAY	DC 12V ME-7C-012-2H	
△	RY801	BI8RL00181	RELAY	DC 12V ME-7-012-HL	
	SW401	BI804721	SWITCH	1101VA-1	
	SW920	BI8EVQ11G05P015	SWITCH	EVQ11G	
	U701	STK402-950	IC	BI115431	
	XXX	BI12P20204U	CONNECTOR	2P P=2.0MM	
	XXX	BI12P20205U	CONN ASSY	2PIN P=2.0MM	
	XXX	BI12P50124U	CONN ASSY		
	XXX	BI12P50127	F-CABLE	5PIN P=3.95MM	
	X401	BI2102461	CRYSTAL	8.38MHZ	
	X402	BI2101016U	CRYSTAL	32.768KHZ	

■ Electrical parts list (Front board)

Block No. 02

△	Item	Parts number	Parts name	Remarks	Area
	CN903	BI12S130027	FFC CONNECTOR	13P V FFC/FPC P=1.25	
	CN904	BI12P30217	CONNECTOR	3PINS	
	D 907	IN4148	DIODE	BI31N4148M000	
	D 908	IN4148	DIODE	BI31N4148M000	
	D 909	IN4148	DIODE	BI31N4148M000	
	D 910	IN4148	DIODE	BI31N4148M000	
	D 911	IN4148	DIODE	BI31N4148M000	
	FB901	BI18A843556N000	F-BEAD	843556 TB36	
	IC903	RPM676	IC	BI115291	
	IC904	UPD16315	IC	BI115171	
	J 2	BI23B0292	HEADPHONE JACK	HTJ-035-1	
	PCB	BI251197G01V	FRONT BOARD		
	S 916	BI8EVQ11G05P015	LIGHT TOUCH SWITCH	EVQ11G	
	SW908	BI8EVQ11G05P015	LIGHT TOUCH SWITCH	EVQ11G	
	SW909	BI8EVQ11G05P015	LIGHT TOUCH SWITCH	EVQ11G	
	SW911	BI8EVQ11G05P015	LIGHT TOUCH SWITCH	EVQ11G	
	SW913	BI8EVQ11G05P015	LIGHT TOUCH SWITCH	EVQ11G	
	SW914	BI8EVQ11G05P015	LIGHT TOUCH SWITCH	EVQ11G	
	SW918	BI8EVQ11G05P015	LIGHT TOUCH SWITCH	EVQ11G	
	SW919	BI8EVQ11G05P015	LIGHT TOUCH SWITCH	EVQ11G	
	V 901	BI804291	ROTRY SWITCH	RE012104PVB25FINB	
	VL901	BI2701951	VFD		
	XXX	BI3019030101	VFD PAD	CORD WITH TWO ADH	
	XXX	BI12P60144U	CONNECTOR	6PIN WIRE PITCH=2.0MM	
	XXX	BI2025200101	HLDR VFD		
	XXX	BI2025790101	HLDR SENSOR	0.3MM SPTE	

■ Electrical parts list (Electrical assembly)

Block No. 04

△	Item	Parts number	Parts name	Remarks	Area
	XXX	BI11AT060W0	WIRE ASSY	1P L=60MM W 8M	
	XXX	BI11AT150B0	WIRE ASSY	1P L=150MM	
	XXX	BI12P40254U	F-CABLE	4PINS P=3.94MM	
	XXX	BI1205431	DRIVE CABLE	40PINS IDE	
	XXX	BI1205461	F-FFC	13PINS P=1.25MM	
	XXX	BI1205471	F-FFC	13PINS P=1.25MM	
	XXX	BI3020060101	EMI S CONDUCTIVE		

■ Electrical parts list (Sub woofer board)

Block No. 03

△	Item	Parts number	Parts name	Remarks	Area
	D 601	LL4148	SMD SWITCH DIODE	BI3LL4148A018	
	D 602	LL4148	SMD SWITCH DIODE	BI3LL4148A018	
	D 603	SK110	SMD SCHOTTKY DIODE	BI3SK110A000	
	D 604	SK110	SMD SCHOTTKY DIODE	BI3SK110A000	
	D 605	SK110	SMD SCHOTTKY DIODE	BI3SK110A000	
	D 606	SK110	SMD SCHOTTKY DIODE	BI3SK110A000	
	IC601	LX1711CDB	IC	BI115351	
	IC602	NJM7815	IC	BI115071	
	IC603	IR2110	IC	BI115361	
	IC604	IR2110	IC	BI115361	
	J 602	BI12S50144	SOCKET	5PINS P/3.96M	
	J 603	BI12S20016	SOCKET CONNECTOR	2PINS	
	L 601	BI26A00131	COIL	33UH/5A K	
	L 602	BI26A00131	COIL	33UH/5A K	
	PCB	BI251209B01V	SUB WOOFER BOARD		
	Q 601	IRF530N	POWER MOSFET	BI221RF530N1	
	Q 602	IRF530N	POWER MOSFET	BI221RF530N1	
	Q 603	2SC3052	SMD TRANSISTOR	BI2SC3052FA013	
	Q 604	2SBT5401	SMD TRANSISTOR	BI2SBT5401A017	
	Q 605	IRF530N	POWER MOSFET	BI221RF530N1	
	Q 606	IRF530N	POWER MOSFET	BI221RF530N1	

■ Electrical parts list (MPEG board)

Block No. 05

△	Item	Parts number	Parts name	Remarks	Area	△	Item	Parts number	Parts name	Remarks	Area
	CON 1	BI12S130032	SOCKET	13PINS P=2.0			RN 3	BIRN3300165A006	SMD RES. ARRAY	4X330HM	
	CON 2	BI12S130032	SOCKET	13PINS P=2.0			RN 4	BIRN3300165A006	SMD RES. ARRAY	4X330HM	
	D 1	LL4148	SMD SWITCH DIODE	BI3LL4148A018			RN 5	BIRN3300165A006	SMD RES. ARRAY	4X330HM	
	D 2	LL4148	SMD SWITCH DIODE	BI3LL4148A018			RN 6	BIRN3300165A006	SMD RES. ARRAY	4X330HM	
	D 3	LL4148	SMD SWITCH DIODE	BI3LL4148A018			RN 7	BIRN4720165A006	SMD RES. ARRAY	4X4.7K	
	D 4	LL4148	SMD SWITCH DIODE	BI3LL4148A018			RN 8	BIRN4720165A006	SMD RES. ARRAY	4X4.7K	
	D 6	IN4002	DIODE	BI31N40025			RN 9	BIRN5100165A006	SMD RES. ARRAY	4X510HM	
	D 7	LL4148	SMD SWITCH DIODE	BI3LL4148A018			RN 10	BIRN5100165A006	SMD RES. ARRAY	4X510HM	
	D 8	LL4148	SMD SWITCH DIODE	BI3LL4148A018			RN 11	BIRN5100165A006	SMD RES. ARRAY	4X510HM	
	D 9	LL4148	SMD SWITCH DIODE	BI3LL4148A018			RN 12	BIRN5100165A006	SMD RES. ARRAY	4X510HM	
	D 10	LL4148	SMD SWITCH DIODE	BI3LL4148A018			RN 13	BIRN5100165A006	SMD RES. ARRAY	4X510HM	
	D 11	LL4148	SMD SWITCH DIODE	BI3LL4148A018			RN 14	BIRN5100165A006	SMD RES. ARRAY	4X510HM	
	D 12	LL4148	SMD SWITCH DIODE	BI3LL4148A018			RN 15	BIRN5100165A006	SMD RES. ARRAY	4X510HM	
	D 13	IN4002	DIODE	BI31N40025			RN 16	BIRN5100165A006	SMD RES. ARRAY	4X510HM	
	D 14	LL4148	SMD SWITCH DIODE	BI3LL4148A018			RN 19	BIRN5100165A006	SMD RES. ARRAY	4X510HM	
	D 15	LL4148	SMD SWITCH DIODE	BI3LL4148A018			U 1	WM8770	SMD IC	BI115041	
	D 17	IN4148	DIODE	BI31N4148M000			U 2	NJM4560	SMD IC OP-AMP	BI112971	
	FB 1	BI18A843556N000	F-BEAD	843556 TB36			U 3	NLAS4599	SMD IC	BI114581	
	FB 2	BI26BLM21BA000	SMD COIL	BLM21B272S			U 4	NJM4560	SMD IC OP-AMP	BI112971	
	FB 3	BI26BLM21BA000	SMD COIL	BLM21B272S			U 5	NJM4560	SMD IC OP-AMP	BI112971	
	FB 5	BI26BLM21BA000	SMD COIL	BLM21B272S			U 6	AMS1117-1.8	SMD IC	BI113412	
	FB 6	BI26BLM21BA000	SMD COIL	BLM21B272S			U 6	BI2023260101	HEAT SINK		
	FB 8	BI26BLM21BA000	SMD COIL	BLM21B272S			U 7	AMS1117-3.3	SMD IC	BI111501	
	FB 9	BI26BLM21BA000	SMD COIL	BLM21B272S			U 8	SN74HCU04	SMD IC	BI111413U	
	FB 10	BI26BLM21BA000	SMD COIL	BLM21B272S			U 9	ZR36751	SMD IC	BI114541	
	FB 12	BI26BLM21BA000	SMD COIL	BLM21B272S			U 10	NJM4560	SMD IC OP-AMP	BI112971	
	FB 14	BI26BLM21BA000	SMD COIL	BLM21B272S			U 11	AT24C0	SMD IC	BI111731	
	FB 16	BI18HG471SNA005	SMD 0805 FB	470OHM 100MHZ			U 12	16BITFLASH	SMD IC	BI114593	
	FB 33	BI18A843556N000	F-BEAD	843556 TB36			U 14	K4S643232F	SMD IC	BI115181	
	FB 34	BI26BLM21BA000	SMD COIL	BLM21B272S			U 17	AK4112B	SMD IC	BI114571	
	FB 35	BI18A843556N000	F-BEAD	843556 TB36			U 19	NJM4560	SMD IC OP-AMP	BI112971	
	FB 38	BI18A843556N000	F-BEAD	843556 TB36			U 20	NJM4560	SMD IC OP-AMP	BI112971	
	FB 39	BI18A843556N000	F-BEAD	843556 TB36			U 21	MC14053B	SMD IC	BI115151	
	FB 41	BI18A916221A005	SMD FILTER BEAD	220OHM 100MHZ			XXX	BI2026420101	COPPER SH-MPEG		
	FB 42	BI18A916221A005	SMD FILTER BEAD	220OHM 100MHZ			Y 1	BI2102271	CRYSTAL	27.000MHZ	
	FB 43	BI18A916221A005	SMD FILTER BEAD	220OHM 100MHZ			Y 2	BI2102441	CRYSTAL	12.288MHZ	
	FB 53	BI26BLM21BA000	SMD COIL	BLM21B272S							
	FB 54	BI18A916221A005	SMD FILTER BEAD	220OHM 100MHZ							
	FB 55	BI18A916221A005	SMD FILTER BEAD	220OHM 100MHZ							
	FB 56	BI18A916221A005	SMD FILTER BEAD	220OHM 100MHZ							
	FB 57	BI18A916121A005	F-BEAD	120OHM 100MHZ							
	FB 58	BI18A916221A005	SMD FILTER BEAD	220OHM 100MHZ							
	J 1	BI12S400006	VERTICAL IDE SOCKET	40PIN							
	J 3	BI2301121	CONNECTOR								
	J 7	BI12S40072	SOCKET CONNECTOR	4PINS							
	JK 1	BI2301131	CONNECTOR								
	L 1	BI26018000KA002	SMD C-COIL	1.8UH K 2012							
	L 2	BI26018000KA002	SMD C-COIL	1.8UH K 2012							
	L 3	BI26018000KA002	SMD C-COIL	1.8UH K 2012							
	L 4	BI26018000KA002	SMD C-COIL	1.8UH K 2012							
	L 5	BI26018000KA002	SMD C-COIL	1.8UH K 2012							
	L 6	BI26018000KA002	SMD C-COIL	1.8UH K 2012							
	P 1	BI2301221	SCART	21PINS FEMALE							
	PCB	BI251238B04V	MPEG BOARD								
	Q 4	2N3904	SMD TRANSISTOR	BI2N3904A000							
	Q 6	2SC2712GR	TRANSISTOR	BI2SC2712GRA014							
	Q 7	2SC2712GR	TRANSISTOR	BI2SC2712GRA014							
	Q 9	2N3906	SMD TRANSISTOR	BI2N3906A000							
	Q 10	2N3906	SMD TRANSISTOR	BI2N3906A000							
	Q 14	DTC114TK	SMD TRANSISTOR	BI2DTC114TKA011							
	Q 15	2N3904	SMD TRANSISTOR	BI2N3904A000							
	RN 1	BIRN3300165A006	SMD RES. ARRAY	4X330HM							
	RN 2	BIRN3300165A006	SMD RES. ARRAY	4X330HM							

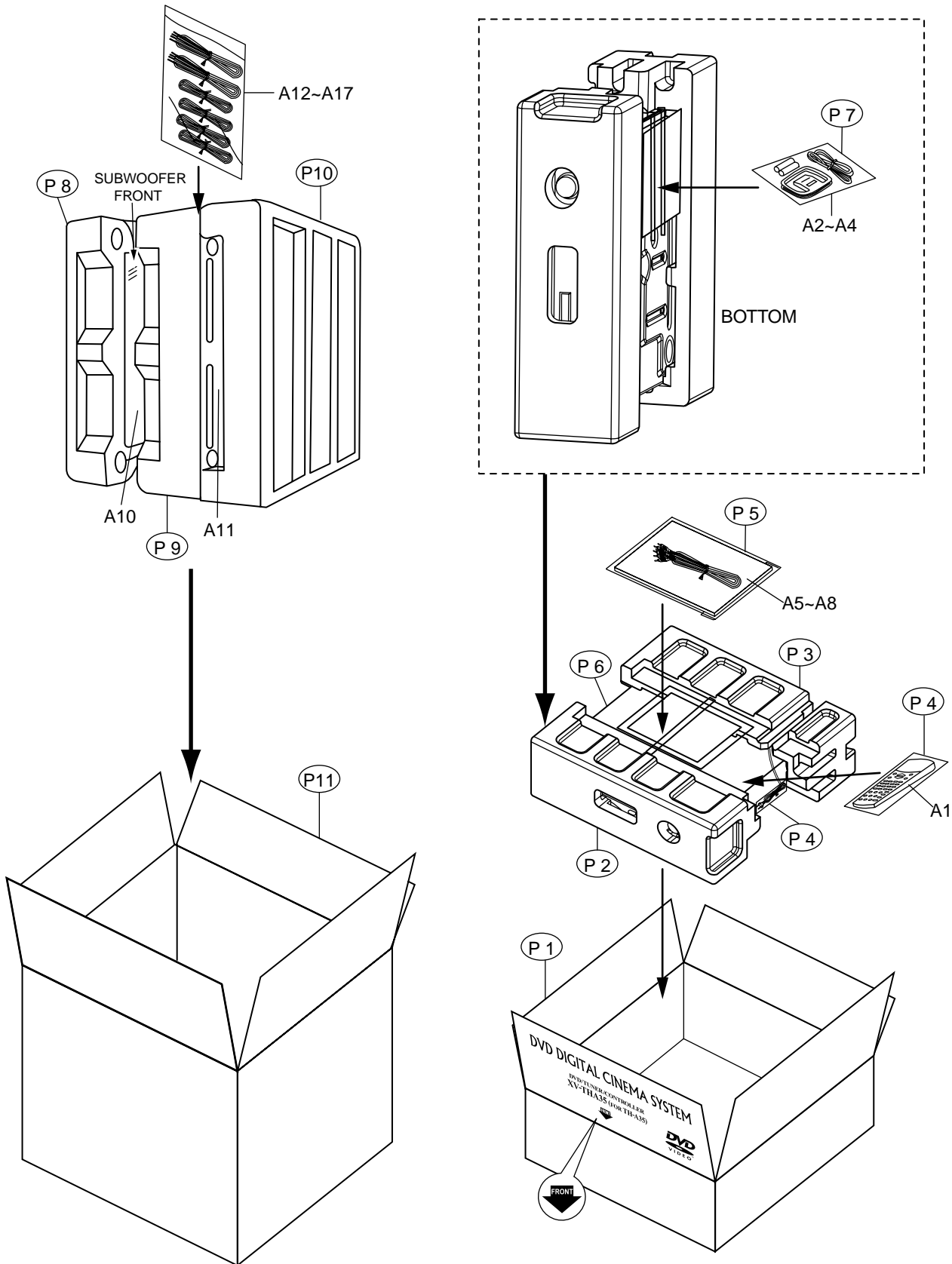
Packing materials and accessories parts list

Block No.

M	3	M	M
---	---	---	---

Block No.

M	5	M	M
---	---	---	---



■ Parts list(Packing)

Block No. M3MM

△	Item	Parts number	Parts name	Q'ty	Description	Area
	P 1	BI431303	CARTON BOX	1	UNIT	
	P 2	BI4512071	POLY FORM	1	FRONT	
	P 3	BI4512081	POLY FORM	1	REAR	
	P 4	BI4005355	POLY BAG	2	REMOTE&POWER CORD	
	P 5	BI4710311	POLY BAG	1	INSTRUCTIONS	
	P 6	BI4512151	EPE FOAM BAG	1	UNIT	
	P 7	BI4710571U	POLY BAG	1	ANT LOOP	
	P 8	BI4512371	POLY FORM	1	LEFT	
	P 9	BI4512381	POLY FORM	1	MIDDLE	
	P10	BI4512391	POLY FORM	1	RIGHT	
	P11	BI4313011	CARTON BOX	1	SPEAKER	

■ Parts list (Accessories)

Block No. M5MM

△	Item	Parts number	Parts name	Q'ty	Description	Area
	A 1	BI600THA35020U	REMOTE CONTROL	1		
	A 2	BIAN01141	ANTENN LOOP	1		
	A 3	-----	ABTTERY	2		
	A 4	BIAN01051	FM ANT WIRE	1		
	A 5	BI11F3000SA30U	VIDE AUDIO CABLE	1		
	A 6	BI4411801	INSTRUXTIONS	1	LVT1009-005B	EN
		BI4411811	INSTRUXTIONS	1	LVT1009-004B	E
		BI4412042	INSTRUXTIONS	1	LVT1009-006A	EV
		BI4412051	INSTRUXTIONS	1	LVT1009-003D	B
	A 7	BI4032912	USER CARD	1		B
	A 8	BI40332883	EURO GUARANTEE	1		
	A10	BI2000106500201	SUB WOOFER SPEAKER	1	SP-WA35	
	A11	BI2000103000203	SATELLITE SPEAKER	5	SP-THA35F	
	A12	BI11C6000R11	SPEAKER CORD SUB	1	6M/BLUE	
	A13	BI11C6000R12	SPEAKER CORD L	1	6M/WHITE	
	A14	BI11C6000R13	SPEAKER CORD R	1	6M/RED	
	A15	BI11C6000R14	SPEAKER CORD C	1	6M/YELLOW	
	A16	BI11C10000R15	SPEAKER CORD RS	1	10M/BROWN	
	A17	BI11C10000R16	SPEAKER CORD LS	1	10M/GREEN	