

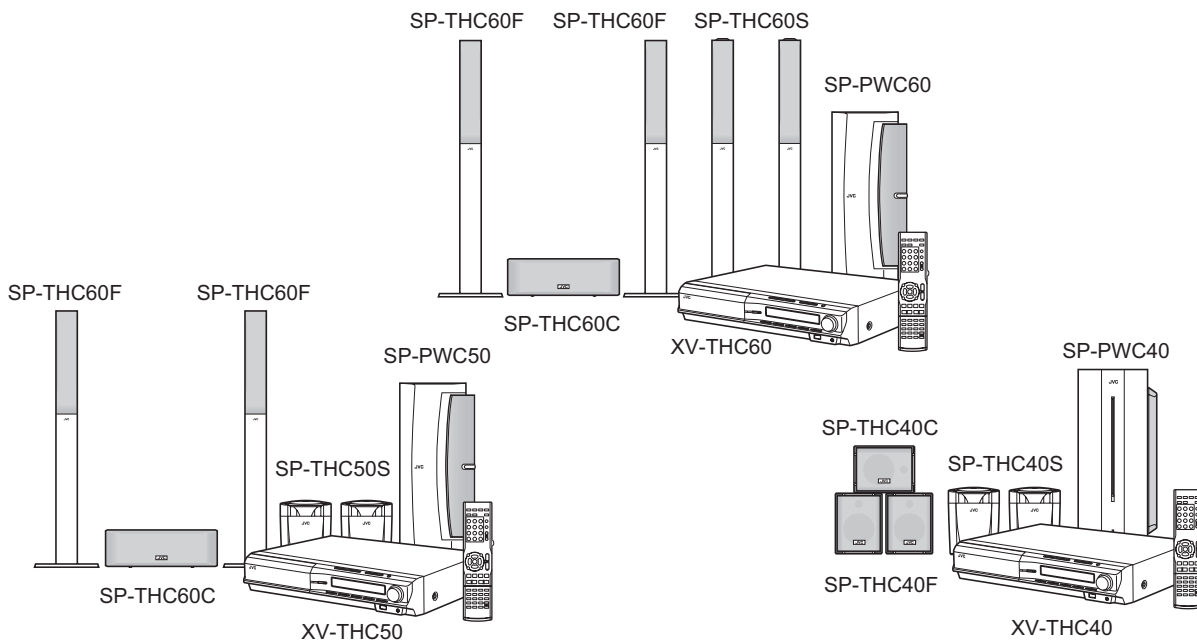
JVC

SCHEMATIC DIAGRAMS

DVD DIGITAL THEATER SYSTEM

TH-C60J, TH-C60C TH-C50J, TH-C50C TH-C40J, TH-C40C

CD-ROM No.SML200605



AV COMPU LINK

Digital Direct Progressive Scan

Lead free solder used in the board (material : Sn-Ag-Cu, melting point : 219 Centigrade)

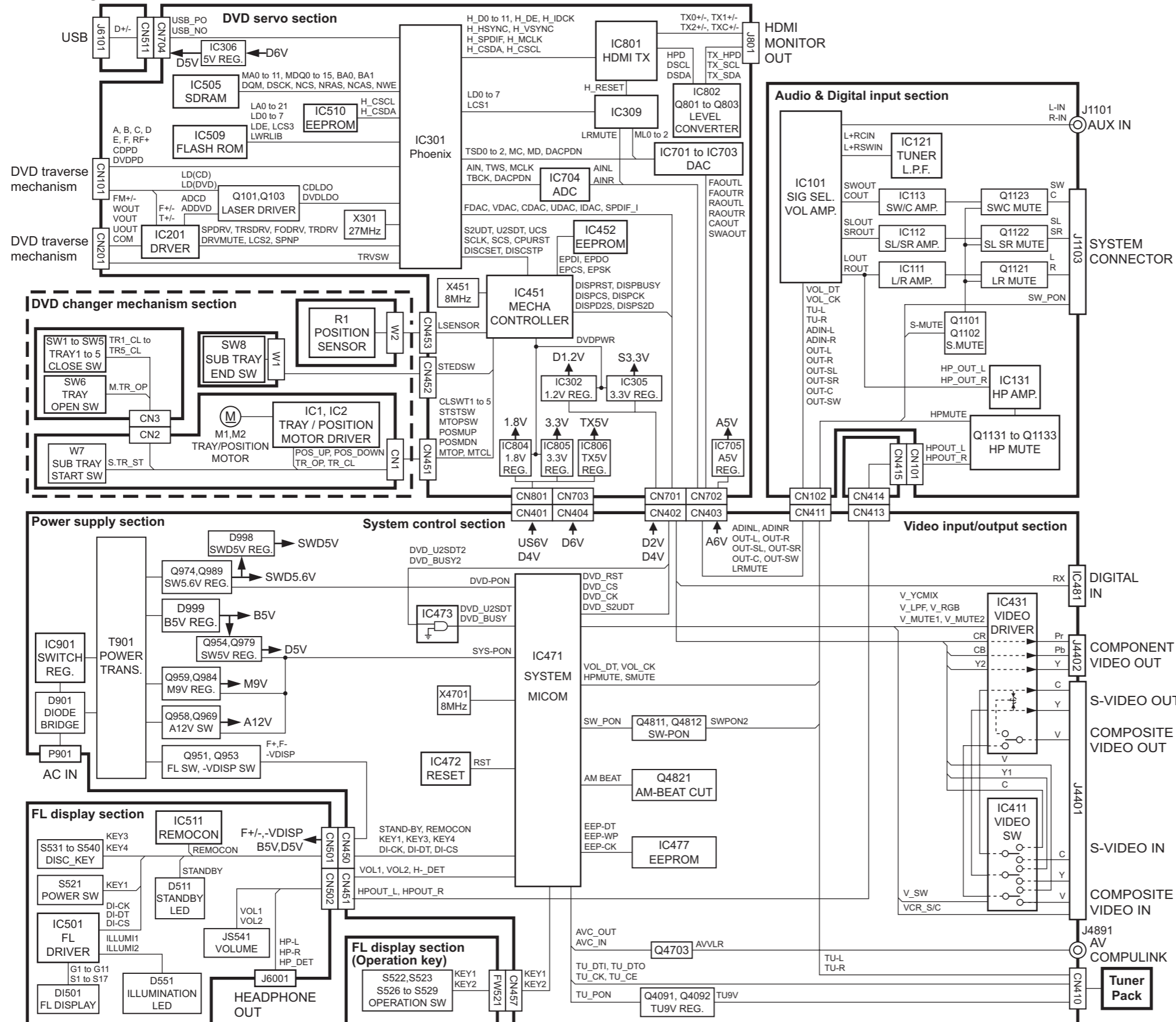
Contents

Block diagrams	2-1
Standard schematic diagrams	2-2
Printed circuit boards	2-13 to 16

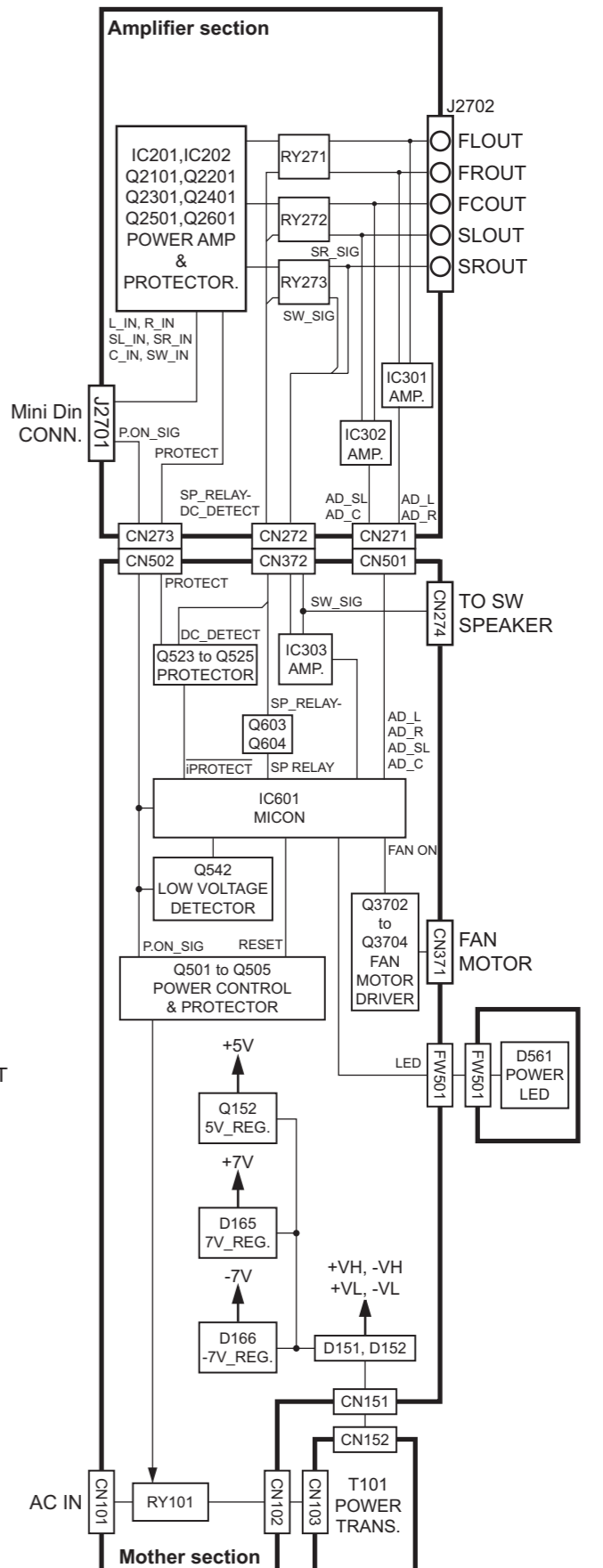
In regard with component parts appearing on the silk-screen printed side (parts side) of the PWB diagrams, the parts that are printed over with black such as the resistor (■), diode (▣) and ICP (●) or identified by the "▲" mark nearby are critical for safety.

Block diagram

<Main body section>

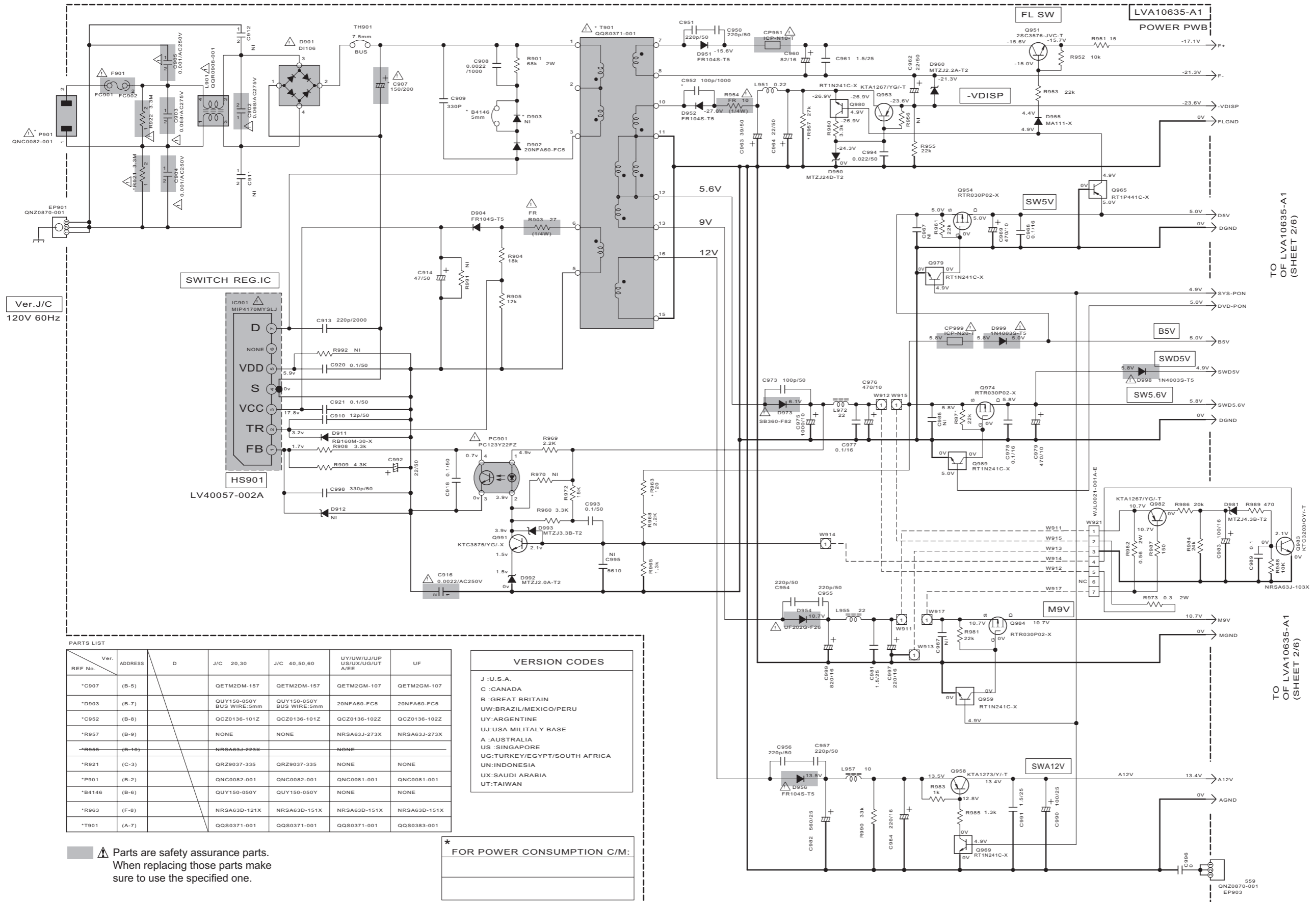


<Subwoofer section>



Standard schematic diagrams

Power section



TO OF LVA10635-A1
(SHEET 2/6)

TO OF LVA10635-A1
(SHEET 2/6)

PARTS LIST

Ver.	ADDRESS	D	J/C 20,30	J/C 40,50,60	UY/UW/UJ/UP US/UK/UG/UT A/EE	UF
*C907	(B-5)		QETM2DM-157	QETM2DM-157	QETM2GM-107	QETM2GM-107
*D903	(B-7)		QUY150-050Y BUS WIRE:5mm	QUY150-050Y BUS WIRE:5mm	20NFA60-FC5	20NFA60-FC5
*C952	(B-8)		QCZ0136-101Z	QCZ0136-101Z	QCZ0136-102Z	QCZ0136-102Z
*R957	(B-9)		NONE	NONE	NRSA63J-273X	NRSA63J-273X
*R955	(B-10)		NRSA63J-223X		NONE	
*R921	(C-3)		QRZ9037-335	QRZ9037-335	NONE	NONE
*P901	(B-2)		QNC0082-001	QNC0082-001	QNC0081-001	QNC0081-001
*B4146	(B-6)		QUY150-050Y	QUY150-050Y	NONE	NONE
*R963	(F-8)		NRSA63D-121X	NRSA63D-151X	NRSA63D-151X	NRSA63D-151X
*T901	(A-7)		QQS0371-001	QQS0371-001	QQS0371-001	QQS0383-001

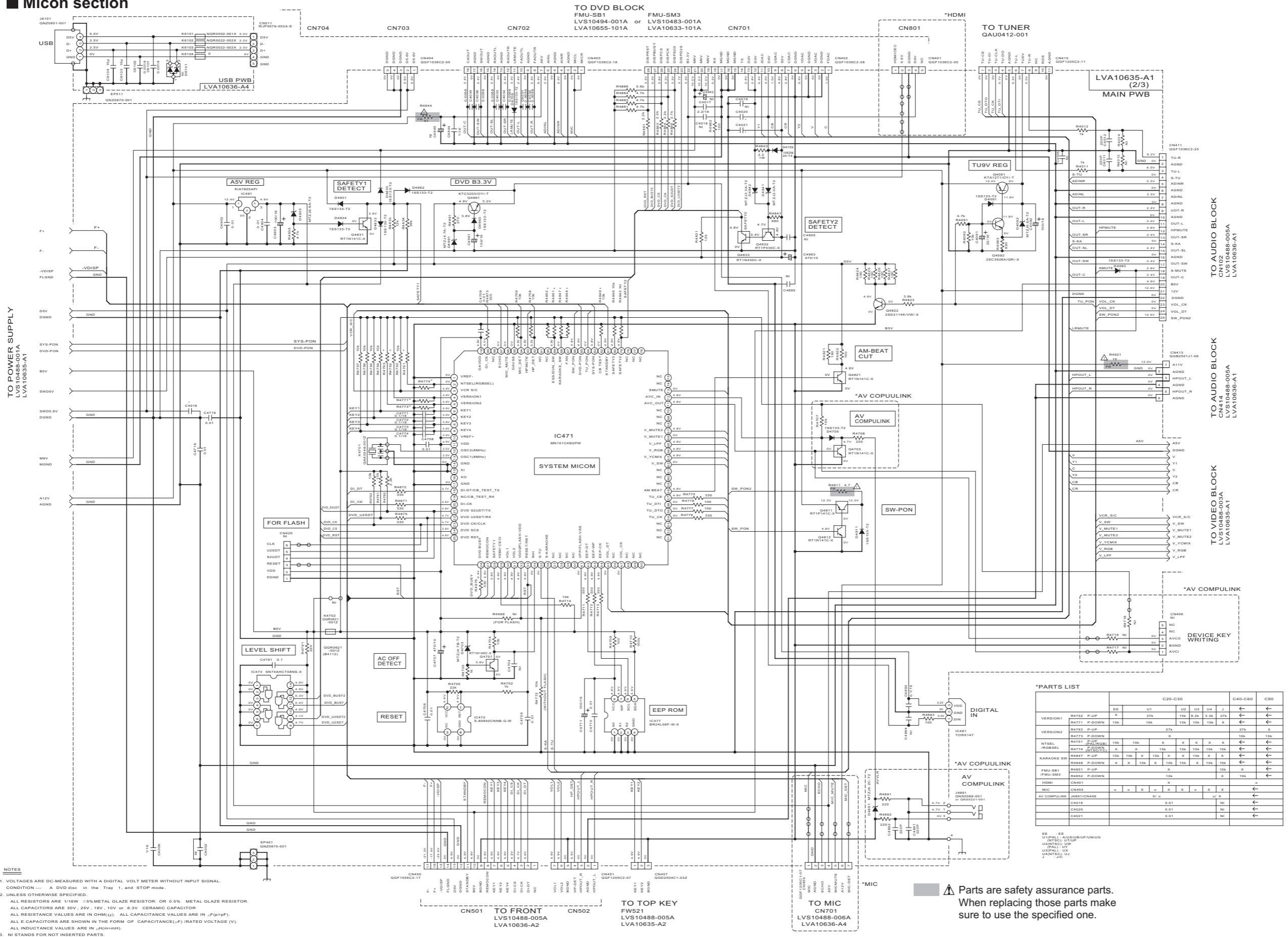
VERSION CODES

J : U.S.A.
C : CANADA
B : GREAT BRITAIN
UW : BRAZIL/MEXICO/PERU
UY : ARGENTINE
UJ : USA MILITARY BASE
A : AUSTRALIA
US : SINGAPORE
UG : TURKEY/EGYPT/SOUTH AFRICA
UN : INDONESIA
UX : SAUDI ARABIA
UT : TAIWAN

⚠ Parts are safety assurance parts.
When replacing those parts make
sure to use the specified one.

* FOR POWER CONSUMPTION C/M:

Micon section



NOTES

- VOLTAGES ARE DC-MEASURED WITH A DIGITAL VOLT METER WITHOUT INPUT SIGNAL. CONDITION: ... A DVD disc in the Tray 1, and STOP mode.
- UNLESS OTHERWISE SPECIFIED, ALL RESISTORS ARE 1/16W ±5% METAL GLAZE RESISTOR, OR 0.5% METAL GLAZE RESISTOR. ALL CAPACITORS ARE 50V, 25V, 16V, 10V or 6.3V CERAMIC CAPACITOR. ALL RESISTANCE VALUES ARE IN OHM(Ω). ALL CAPACITANCE VALUES ARE IN μF(μF) or pF(pF). ALL E-CAPACITORS ARE SHOWN IN THE FORM OF CAPACITANCE(μF)/RATED VOLTAGE (V). ALL INDUCTANCE VALUES ARE IN μH(mH).
- NI STANDS FOR NOT INSERTED PARTS.

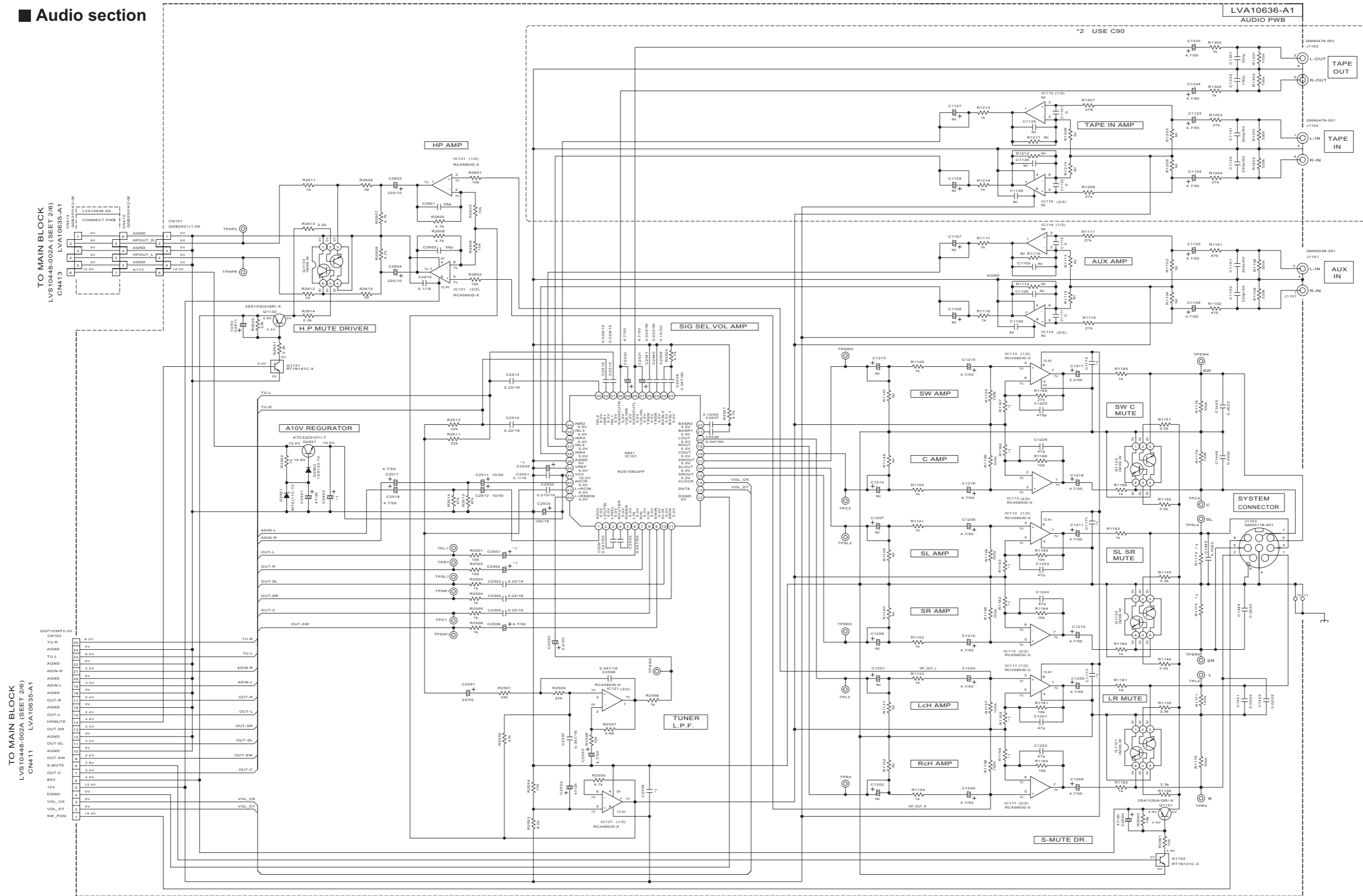
***PARTS LIST**

	EE	U1	U2	U3	U4	J	C40-C60	C90
VERSION1	R4750 P-UP	X	27k	10k	8.2k	3.3k	27k	←
	R4771 P-DOWN	10k	10k	10k	10k	10k	X	←
VERSION2	R4773 P-DOWN		27k				27k	X
	R4773 P-DOWN			X			10k	10k
NTSEL	R4791 P-UP	10k	10k	X	X	X	X	←
IRGSEL	R4774 P-DOWN	X	X	X	X	X	X	←
KARAOKE SW	R4547 P-UP	10k	10k	X	10k	X	X	←
	R4848 P-DOWN	X	X	10k	X	10k	10k	←
FMU-SB1	R4851 P-UP			X			10k	X
FMU-SM3	R4852 P-DOWN						X	10k
HDMI	CN401			X				
MIC	CN405	X	X	X	X	X	X	←
AV COMPULINK	J4811CN406	X	X	X	X	X	X	←
	C4016		0.01				NI	←
	C4020		0.01				NI	←
	C4021		0.01				NI	←

EE: EE
 MIPAL: MIPAL/USUB/IFUN/UG
 MIPAL: MIPAL/USUB/IFUN/UG
 UZINTSC: UZINTSC/USUB/IFUN/UG
 UZINTSC: UZINTSC/USUB/IFUN/UG
 UZINTSC: UZINTSC/USUB/IFUN/UG
 UZINTSC: UZINTSC/USUB/IFUN/UG

⚠ Parts are safety assurance parts. When replacing those parts make sure to use the specified one.

■ Audio section



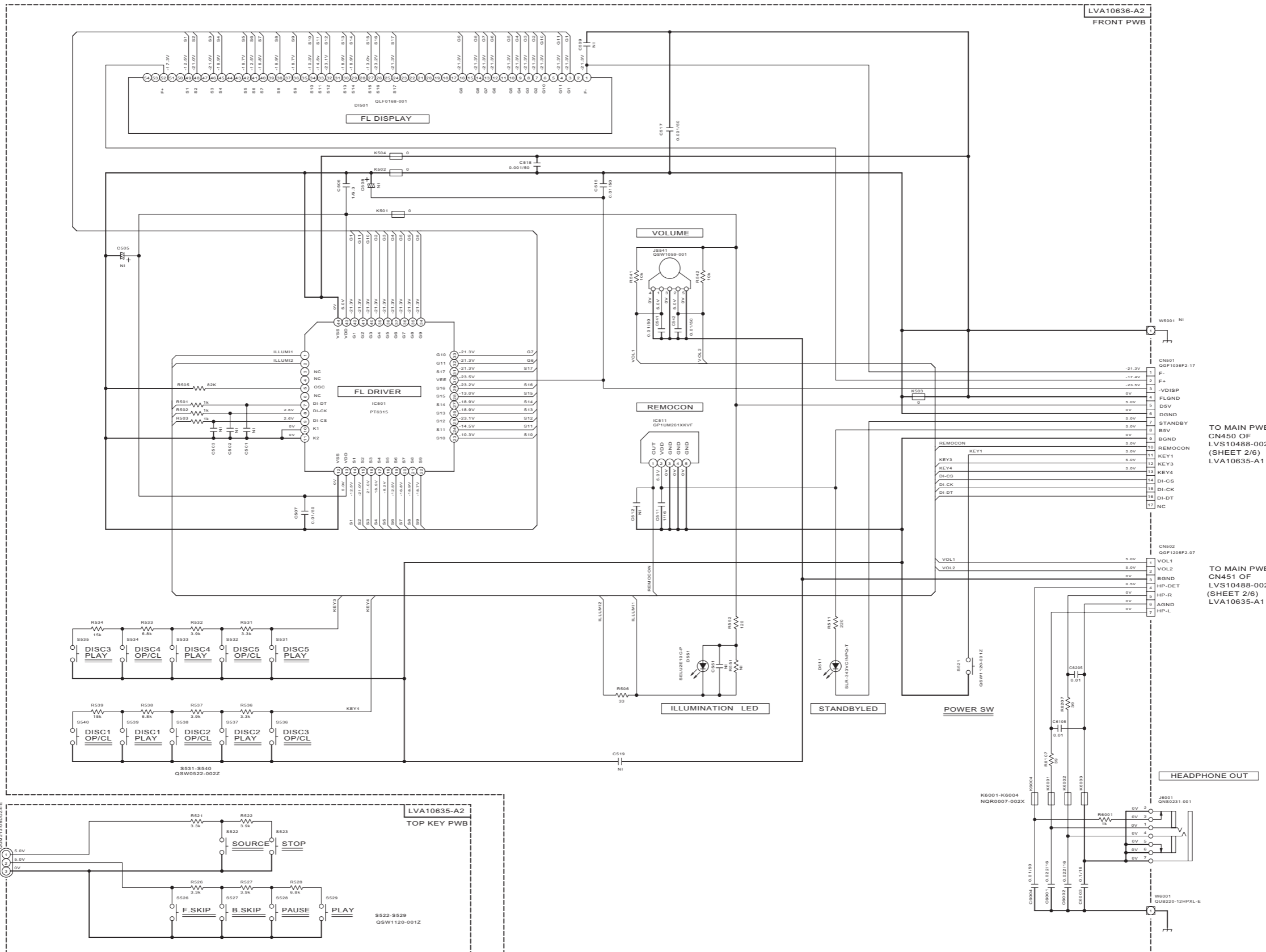
- NOTES
- VOLTAGES ARE DC-MEASURED WITH A DIGITAL VOLT METER WITHOUT INPUT SIGNAL. CONDITION ... A CD disc in the Tray 1, and PLAY mode.
 - UNLESS OTHERWISE SPECIFIED.
 ALL RESISTORS ARE 1/16W ±5% METAL GLAZE RESISTOR. OR 0.5% METAL GLAZE RESISTOR.
 ALL CAPACITORS ARE 50V, 25V, 16V, 10V OR 6.3V CERAMIC CAPACITOR
 ALL RESISTANCE VALUES ARE IN OHM (Ω).
 ALL CAPACITANCE VALUES ARE IN pF (pF).
 ALL R CAPACITORS ARE SHOWN IN THE FORM OF CAPACITANCE (pF) / RATED VOLTAGE (V).
 ALL INDUCTANCE VALUES ARE IN μH (mHMH).
 - NI STANDS FOR NOT INSERTED PARTS.

*1 PARTS LIST

	R1158 R1159	R1162 R1163	R1166	R1167	R1173 R1174	C1170 C1172	C1446	C2554	C2501 C2502	C2530	C2922
XV-THC20/26	10k	68k	10k	18k	100k	0.01/50	0.0022	0.1/50	1/50	100/16	100/16
XV-THC30/40	10k	10k	10k	18k	100k	0.01/50	0.0022	0.1/50	1/50	100/16	100/16
XV-THC50/43	10k	10k	15k	10k	100k	1/16	0.001	1/16	4.7/50	47/25	100/25
XV-THC60/67	10k	-	15k	9.1k	3.9k	1/16	0.001	1/16	4.7/50	47/25	100/25

*2 USE C90

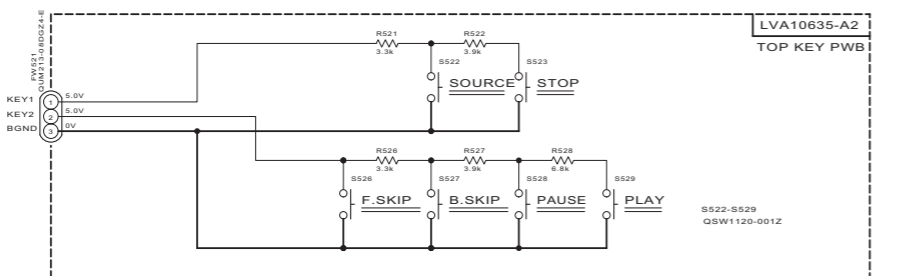
■ Front section



NOTES

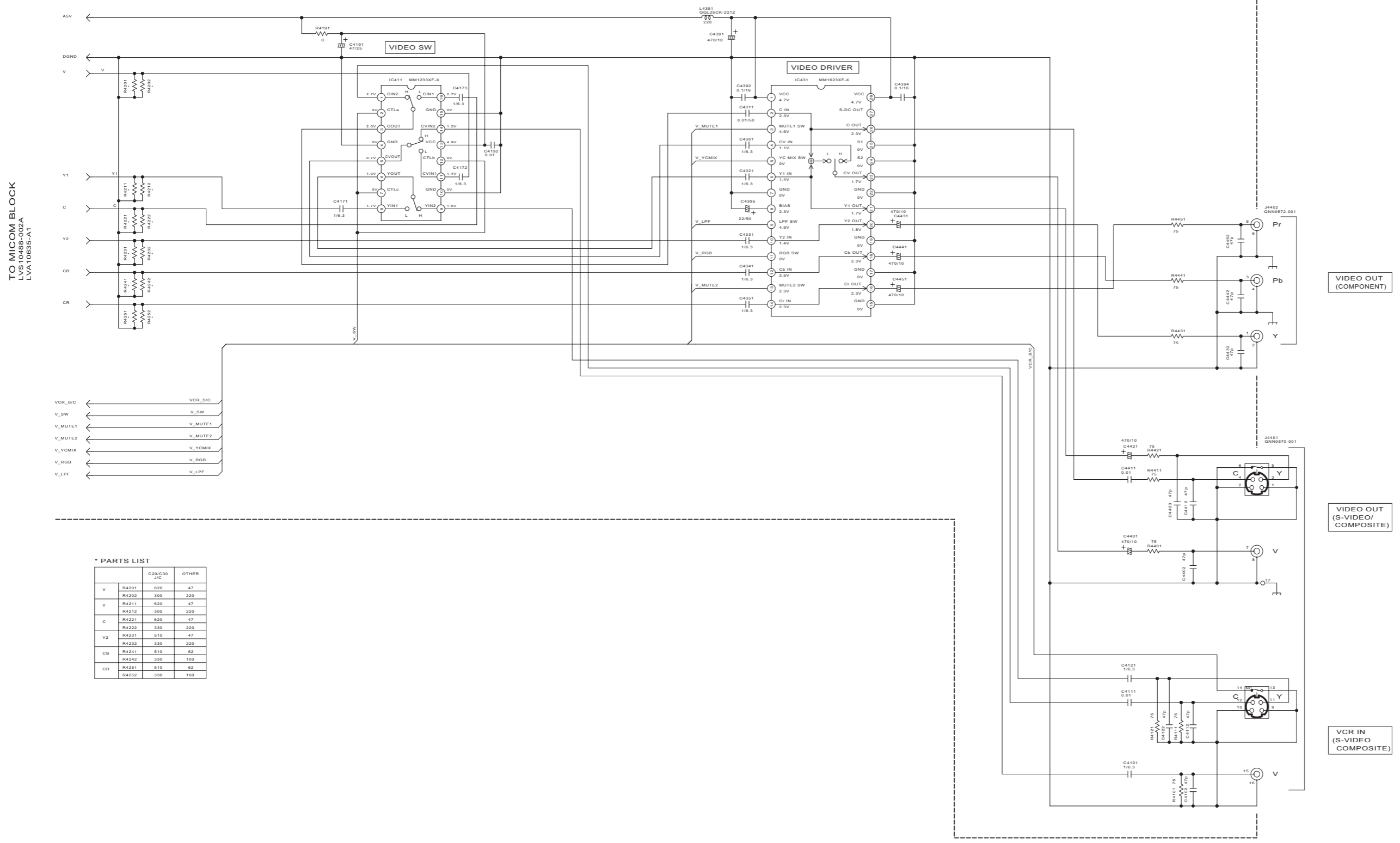
- VOLTAGES ARE DC-MEASURED WITH A DIGITAL VOLT METER WITHOUT INPUT SIGNAL.
CONDITION --- A CD disc in the Tray 1, and PLAY mode.
- UNLESS OTHERWISE SPECIFIED,
ALL RESISTORS ARE 1/16W ±5% METAL GLAZE RESISTOR, OR 0.5% METAL GLAZE RESISTOR.
ALL CAPACITORS ARE 50V, 25V, 16V, 10V or 6.3V CERAMIC CAPACITOR
ALL RESISTANCE VALUES ARE IN OHM(Ω).
ALL CAPACITANCE VALUES ARE IN μF(ppF).
ALL E-CAPACITORS ARE SHOWN IN THE FORM OF CAPACITANCE(μF)/RATED VOLTAGE (V).
ALL INDUCTANCE VALUES ARE IN μH(m=mH).
- NI STANDS FOR NOT INSERTED PARTS.

TO MAIN PWB
CN457 OF
LVS10488-002A
(SHEET 2/6)
LVA10635-A1



Video section

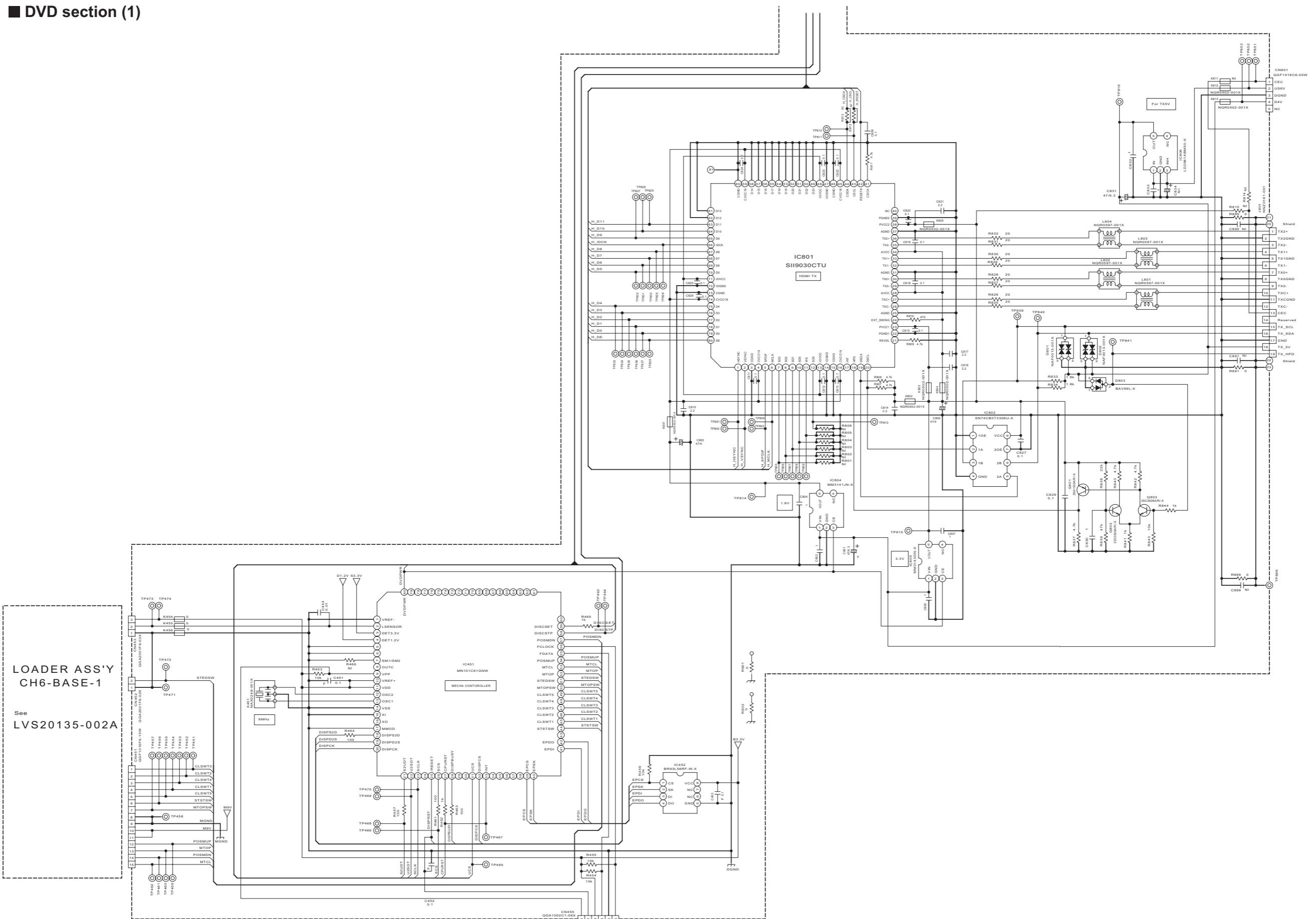
LVA10635-A1 (3/3)
MAIN PWB



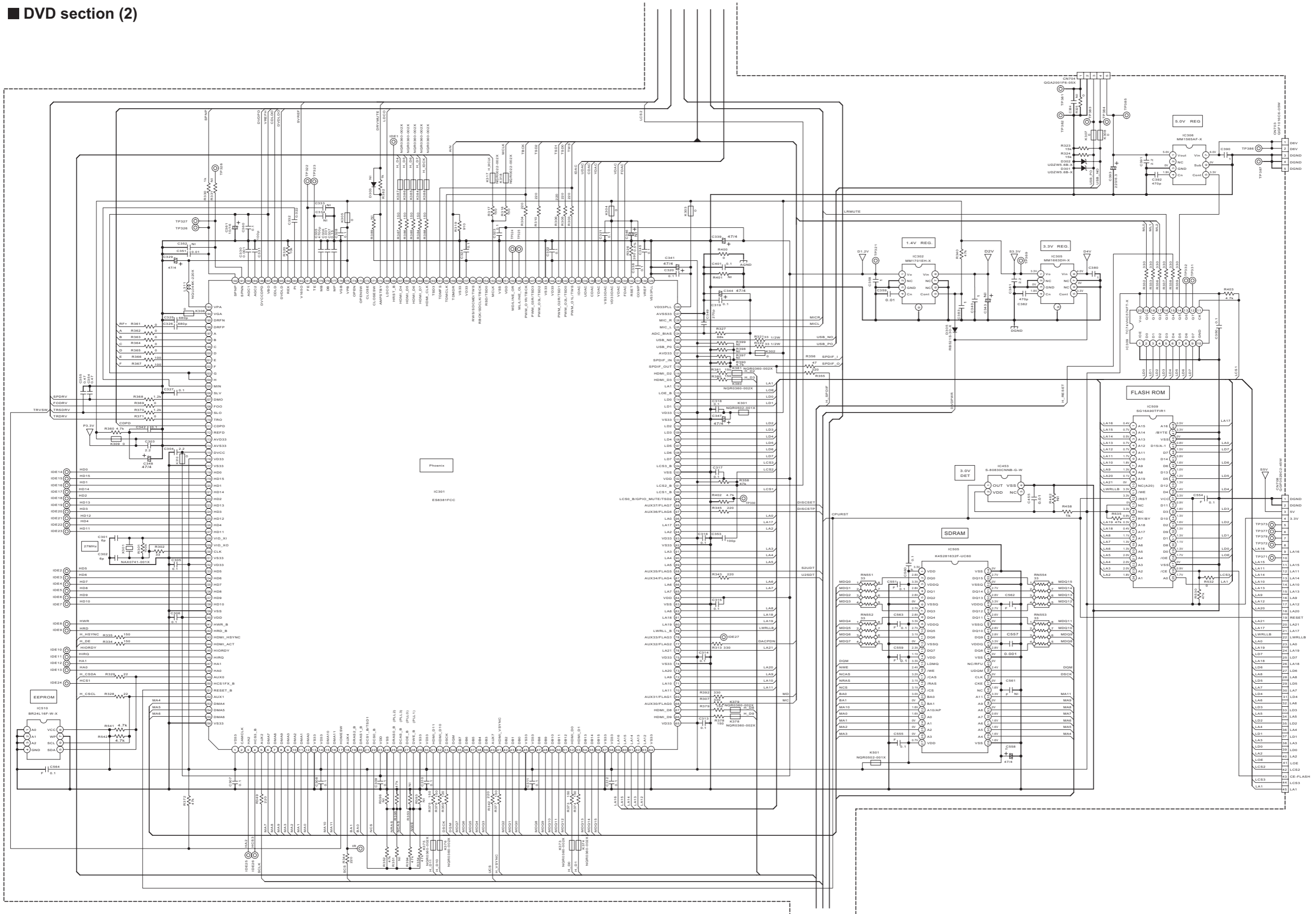
*** PARTS LIST**

		C20/C30 SIC	OTHER
V	R4201	620	47
	R4202	300	220
Y	R4211	620	47
	R4212	300	220
C	R4221	620	47
	R4222	330	220
Y2	R4231	510	47
	R4232	330	220
CB	R4241	510	62
	R4242	330	100
CR	R4251	510	62
	R4252	330	100

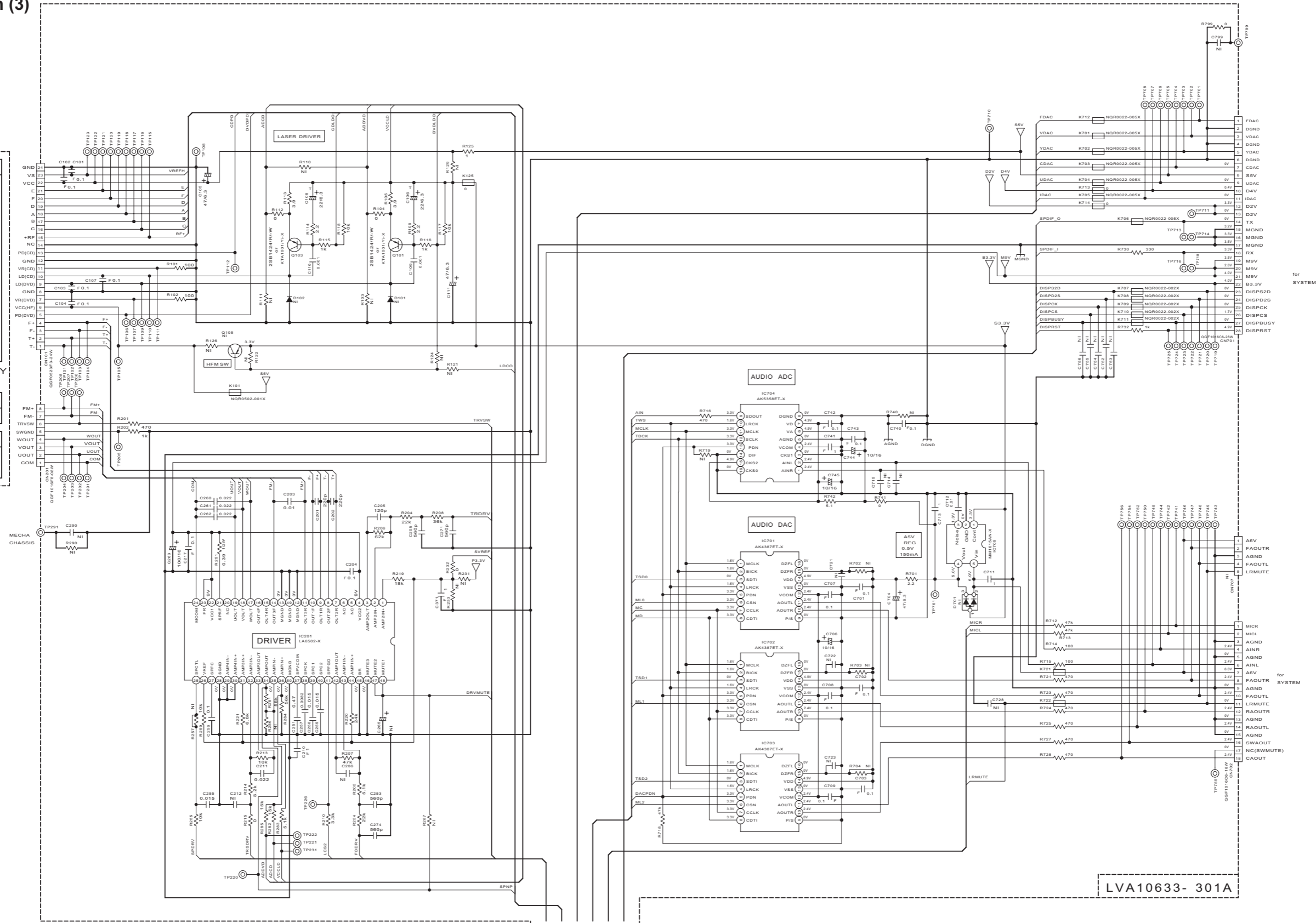
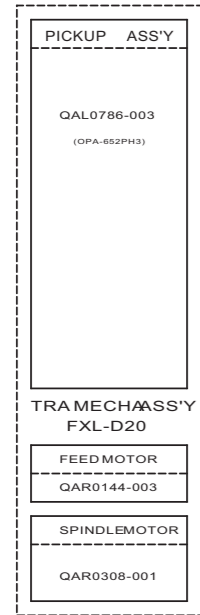
■ DVD section (1)



DVD section (2)



■ DVD section (3)

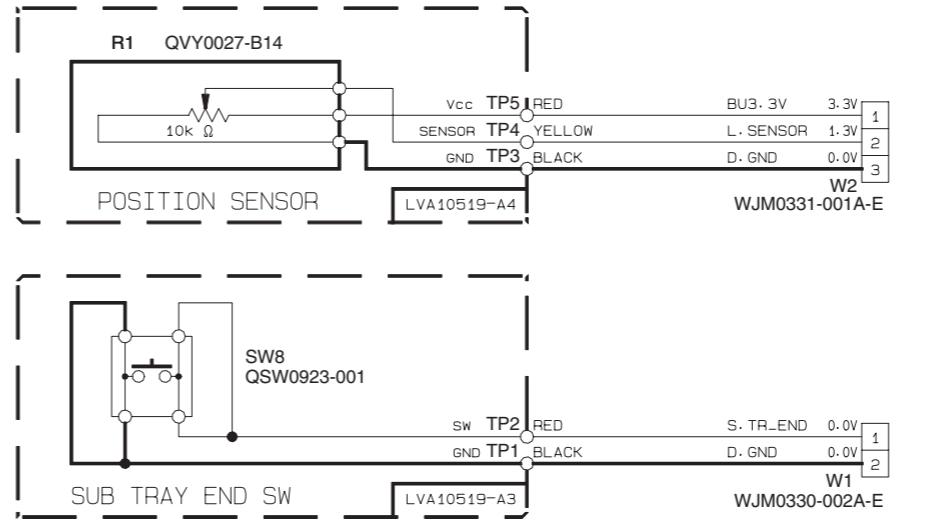
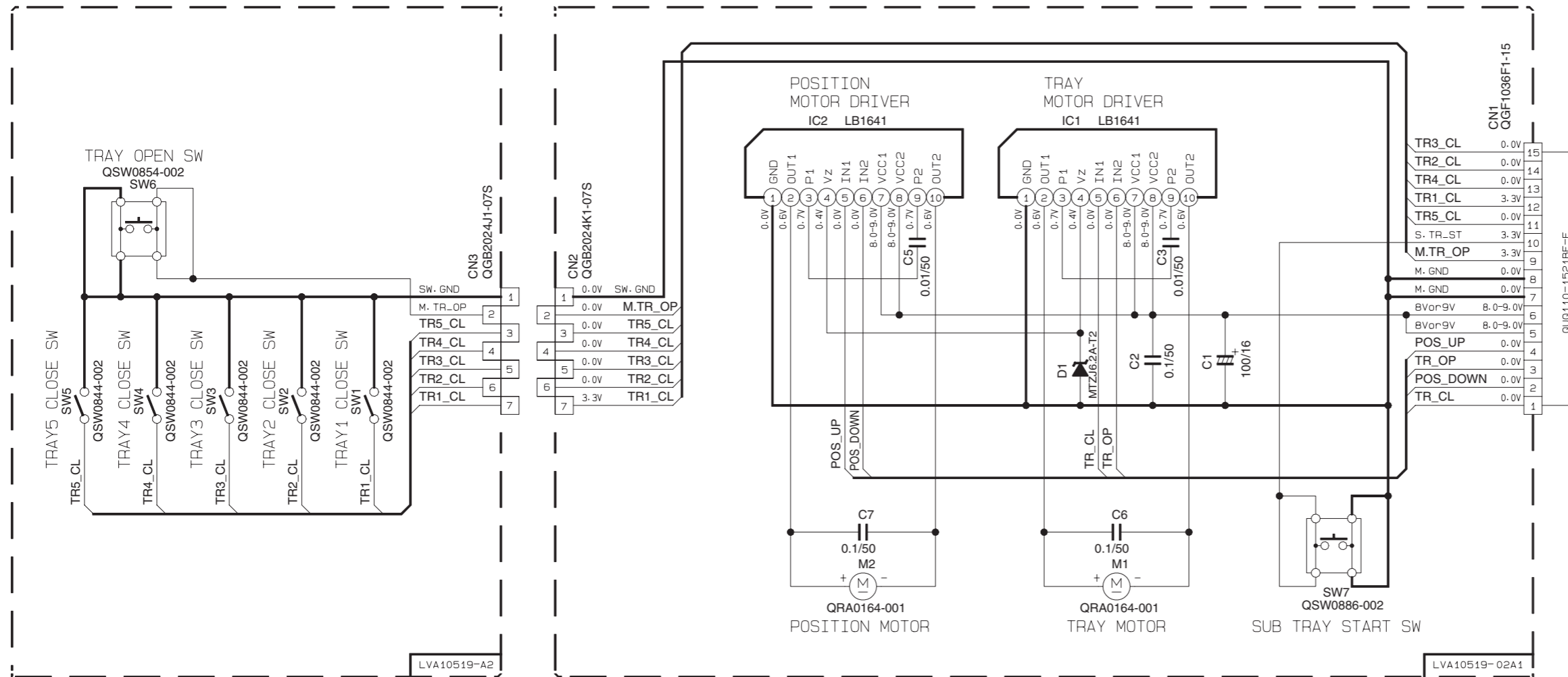


NOTES

- VOLTAGES ARE DC-MEASURED WITH A DIGITAL VOLT METER WITHOUT INPUT SIGNAL.
CONDITION --- A DVD disc in the Tray 1, and STOP mode.
- UNLESS OTHERWISE SPECIFIED.
ALL RESISTORS ARE 1/16W ±5% METAL GLAZE RESISTOR, OR 0.5% METAL GLAZE RESISTOR.
ALL CAPACITORS ARE 50V, 25V, 16V, 10V, OR 6.3V CERAMIC CAPACITOR
ALL RESISTANCE VALUES ARE IN OHM(Ω).
ALL CAPACITANCE VALUES ARE IN pF(pf).
ALL E-CAPACITORS ARE SHOWN IN THE FORM OF CAPACITANCE(μF)/RATED VOLTAGE (V).
ALL INDUCTANCE VALUES ARE IN μH(mmh).
- NI STANDS FOR NOT INSERTED PARTS.

LVA10633- 301A

■ Loader section

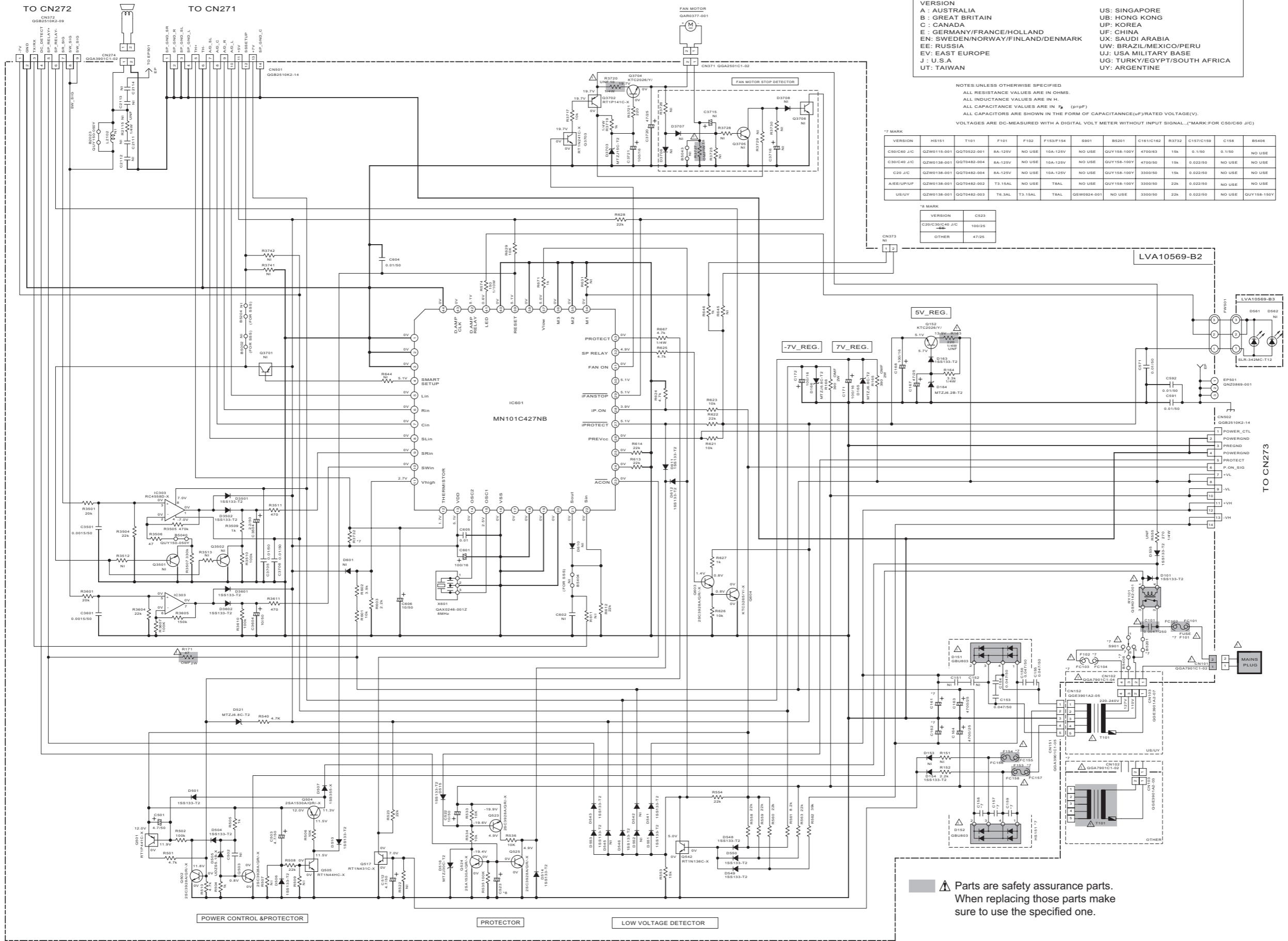


TO POWER AND MECHA CONTROL MICOM

NOTES

1. VOLTAGES ARE DC-MEASURED WITH A DIGITAL VOLT METER. CONDITION: DISC1 STOP
2. UNLESS OTHERWISE SPECIFIED. ALL CAPACITORS ARE SHOWN IN THE FORM OF CAPACITANCE (μF)/RATED VOLTAGE (V).
3. NI STANDS FOR NOT INSERTED PARTS.

Sub woofer power supply section



VERSION
A : AUSTRALIA
B : GREAT BRITAIN
C : CANADA
E : GERMANY/FRANCE/HOLLAND
EN : SWEDEN/NORWAY/FINLAND/DENMARK
EE : RUSSIA
EJ : EAST EUROPE
J : U.S.A
UT : TAIWAN

US : SINGAPORE
UB : HONG KONG
UP : KOREA
UF : CHINA
UX : SAUDI ARABIA
UW : BRAZIL/MEXICO/PERU
UJ : USA MILITARY BASE
UG : TURKEY/EGYPT/SOUTH AFRICA
UY : ARGENTINE

NOTES: UNLESS OTHERWISE SPECIFIED
 ALL RESISTANCE VALUES ARE IN OHMS.
 ALL INDUCTANCE VALUES ARE IN H.
 ALL CAPACITANCE VALUES ARE IN F (pF)
 ALL CAPACITORS ARE SHOWN IN THE FORM OF CAPACITANCE(UF)/RATED VOLTAGE(V).
 VOLTAGES ARE DC-MEASURED WITH A DIGITAL VOLT METER WITHOUT INPUT SIGNAL. (*MARK:FOR C50/C60 J/C)

***7 MARK**

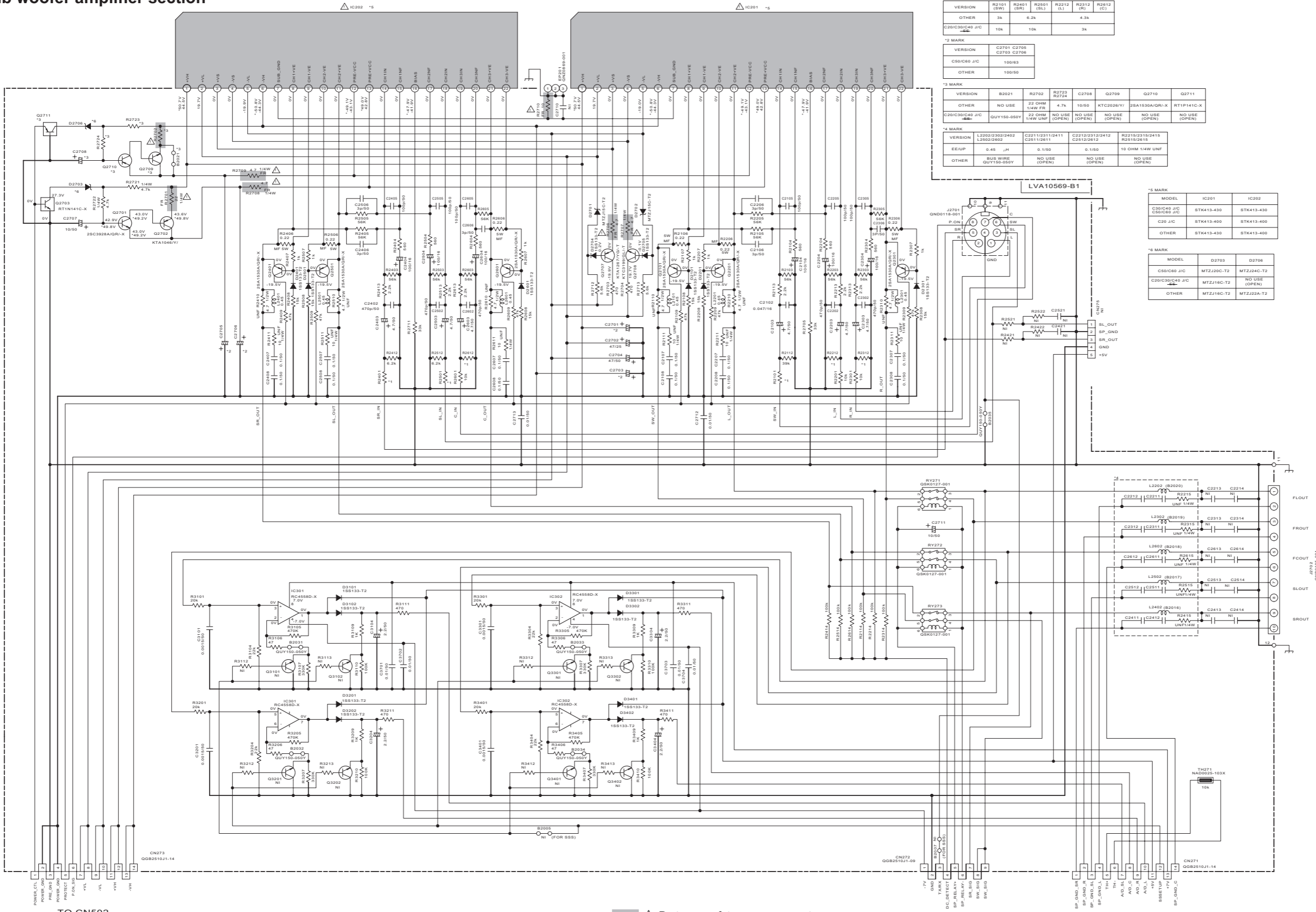
VERSION	H8151	T101	F101	F102	F153/F154	B901	B9201	C161/C162	R3732	C157/C159	C158	B5408
C50/C60 J/C	Q2W0115-001	GGT0522-001	8A-125V	NO USE	10A-125V	NO USE	QUY158-100Y	4700/63	15k	0.1/50	0.1/50	NO USE
C30/C49 J/C	Q2W0138-001	GGT0482-004	8A-125V	NO USE	10A-125V	NO USE	QUY158-100Y	4700/50	15k	0.022/50	NO USE	NO USE
C20 J/C	Q2W0138-001	GGT0482-004	8A-125V	NO USE	10A-125V	NO USE	QUY158-100Y	3300/50	15k	0.022/50	NO USE	NO USE
A/E/E/UP/UF	Q2W0138-001	GGT0482-002	T3-15AL	NO USE	T8AL	NO USE	QUY158-100Y	3300/50	22k	0.022/50	NO USE	NO USE
US/UY	Q2W0138-001	GGT0482-003	T6-3AL	T3-15AL	T8AL	Q5W0924-001	NO USE	3300/50	22k	0.022/50	NO USE	QUY158-100Y

***8 MARK**

VERSION	C523
C20/C30/C49 J/C	100/25
OTHER	47/25

⚠ Parts are safety assurance parts.
 When replacing those parts make sure to use the specified one.

Sub woofer amplifier section



*1 MARK

VERSION	R2101 (SW)	R2401 (SR)	R2501 (SL)	R2112 (L)	R2312 (R)	R2612 (C)
OTHER	3k	6.2k		4.3k		
C200/C300/C40 J/C	10k	10k		3k		

*2 MARK

VERSION	C2701 C2705	C2703 C2706
C50/C60 J/C	100/63	
OTHER	100/50	

*3 MARK

VERSION	R2021	R2702	R2723 R2724	C2708	Q2709	Q2710	Q2711
OTHER	NO USE	22 OHM 1/4W FR	4.7k	10/50	KTC2026/Y	2SA1530A/GRU-X	RT1P141C-X
C200/C300/C40 J/C	QUV150-050Y	22 OHM 1/4W UNF	NO USE (OPEN)	NO USE (OPEN)	NO USE (OPEN)	NO USE (OPEN)	NO USE (OPEN)

*4 MARK

VERSION	L2202/2302/2402 L2602/2602	C2211/2311/2411 C2611/2611	C2212/2312/2412 C2612/2612	R2215/2315/2415 R2615/2615
EE/UP	0.45 μH	0.1/50	0.1/50	10 OHM 1/4W UNF
OTHER	BUS WIRE QUV150-050Y	NO USE (OPEN)	NO USE (OPEN)	NO USE (OPEN)

*5 MARK

MODEL	IC201	IC202
C50/C60 J/C	STK413-430	STK413-430
C20 J/C	STK413-400	STK413-400
OTHER	STK413-430	STK413-400

*6 MARK

MODEL	D2703	D2706
C50/C60 J/C	MTZJ20C-T2	MTZJ24C-T2
C200/C300/C40 J/C	MTZJ16C-T2	NO USE (OPEN)
OTHER	MTZJ16C-T2	MTZJ22A-T2

TO CN502

NOTES: UNLESS OTHERWISE SPECIFIED,
 ALL RESISTANCE VALUES ARE IN OHMS.
 ALL INDUCTANCE VALUES ARE IN H.
 ALL CAPACITANCE VALUES ARE IN μF. (p=ppF)
 ALL CAPACITORS ARE SHOWN IN THE FORM OF CAPACITANCE(μF)/RATED VOLTAGE(V).
 VOLTAGES ARE DC-MEASURED WITH A DIGITAL VOLT METER WITHOUT INPUT SIGNAL. (*MARK:FOR C50/C60 J/C)

Parts are safety assurance parts.
 When replacing those parts make sure to use the specified one.

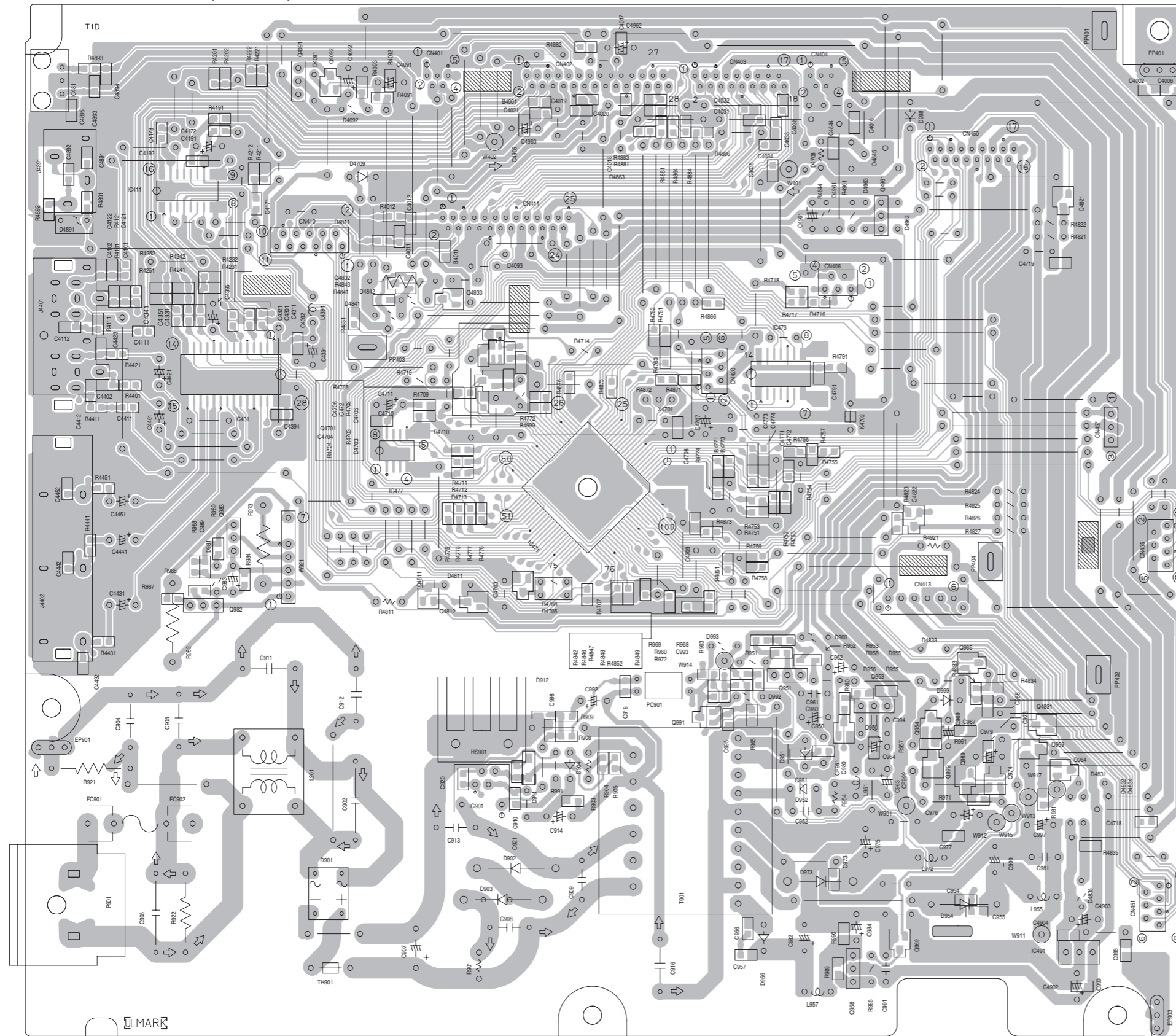
TO CN372

TO CN501

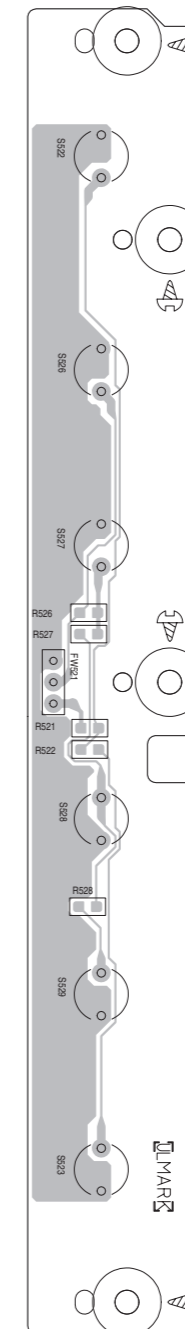
Printed circuit boards

■ Main board Lead free solder used in the board (material : Sn-Ag-Cu, melting point : 219 Centigrade)

(Main board)

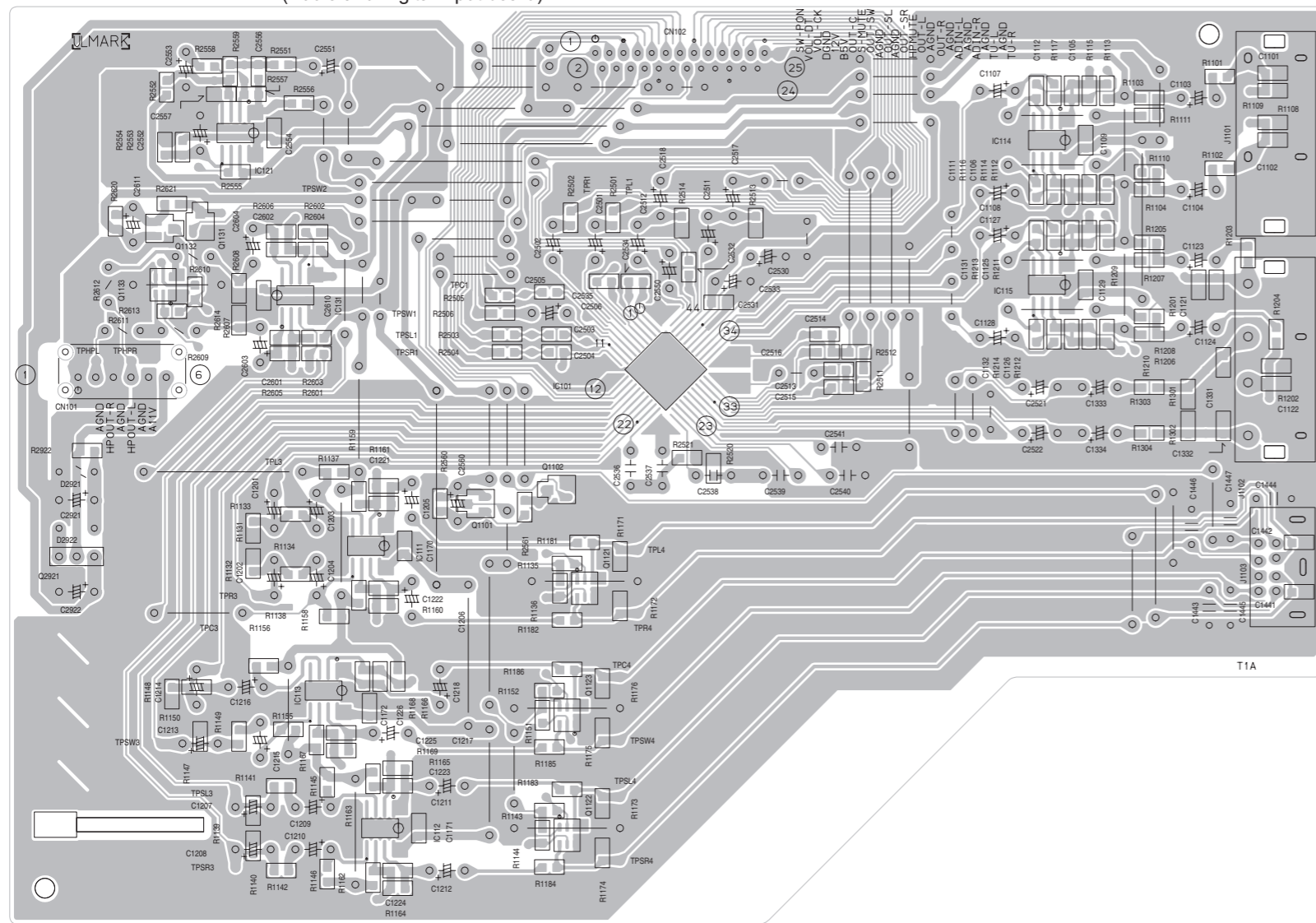


(Operation board)

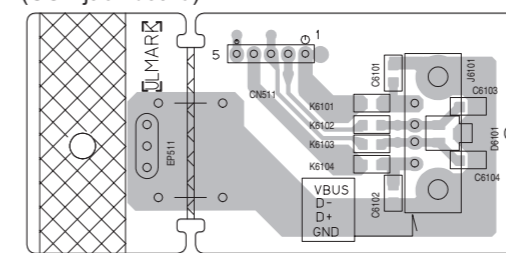


■ Audio board Lead free solder used in the board (material : Sn-Ag-Cu, melting point : 219 Centigrade)

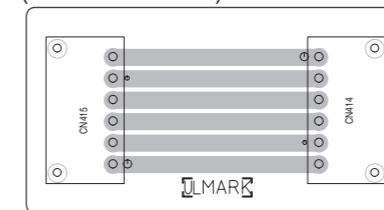
(Audio and Digital input board)



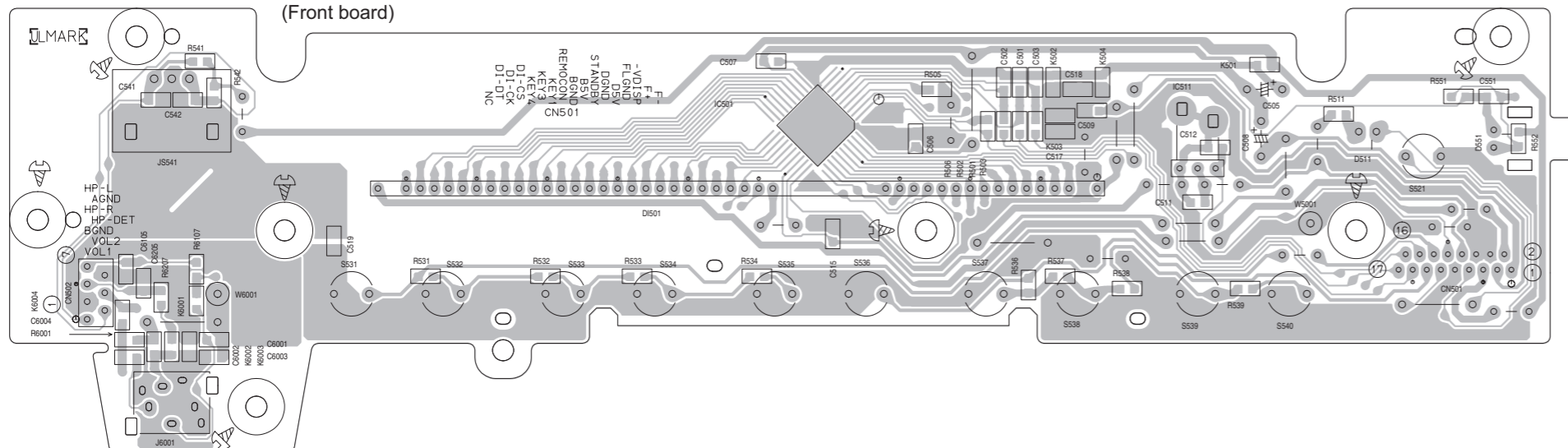
(USB jack board)



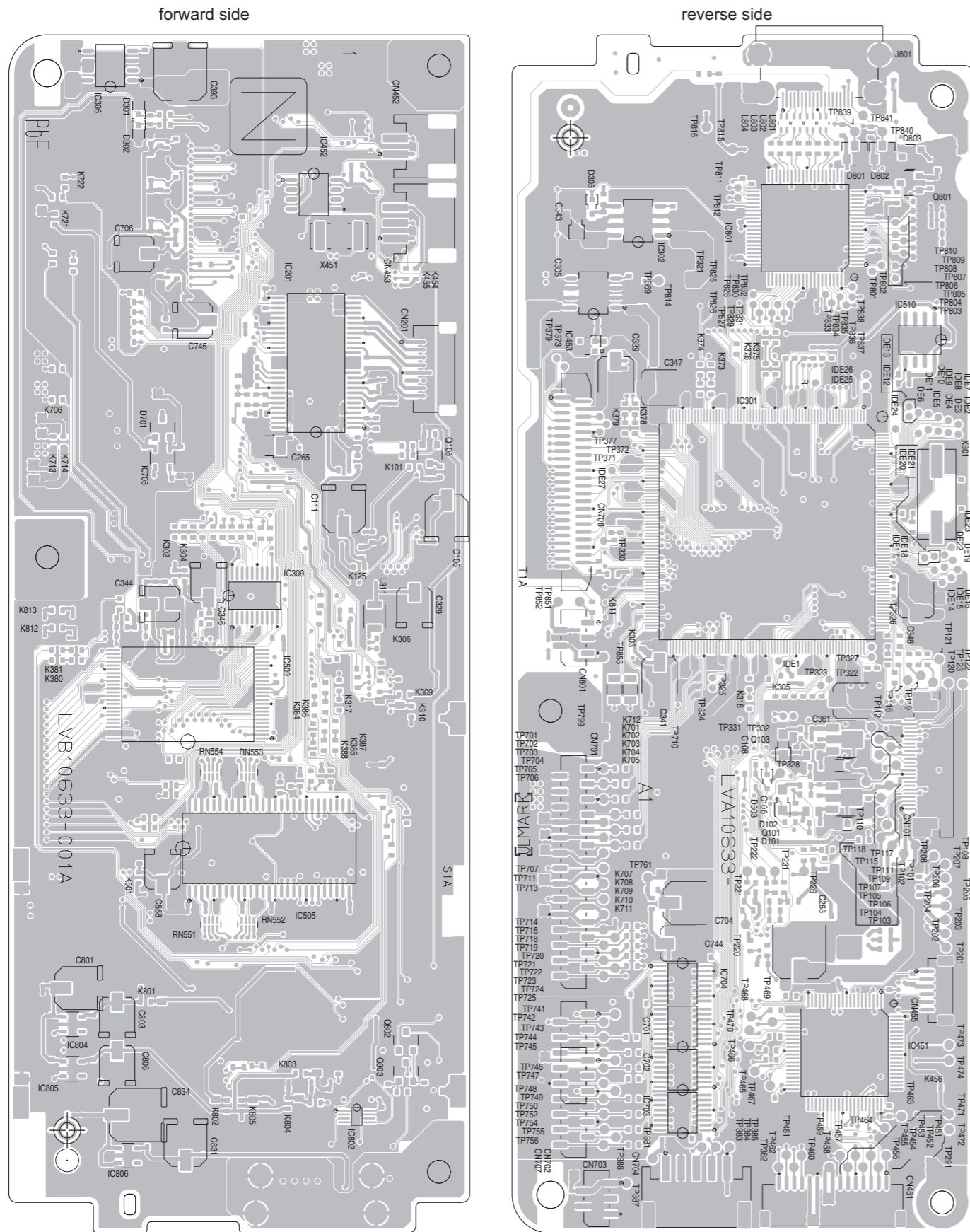
(Connection board)



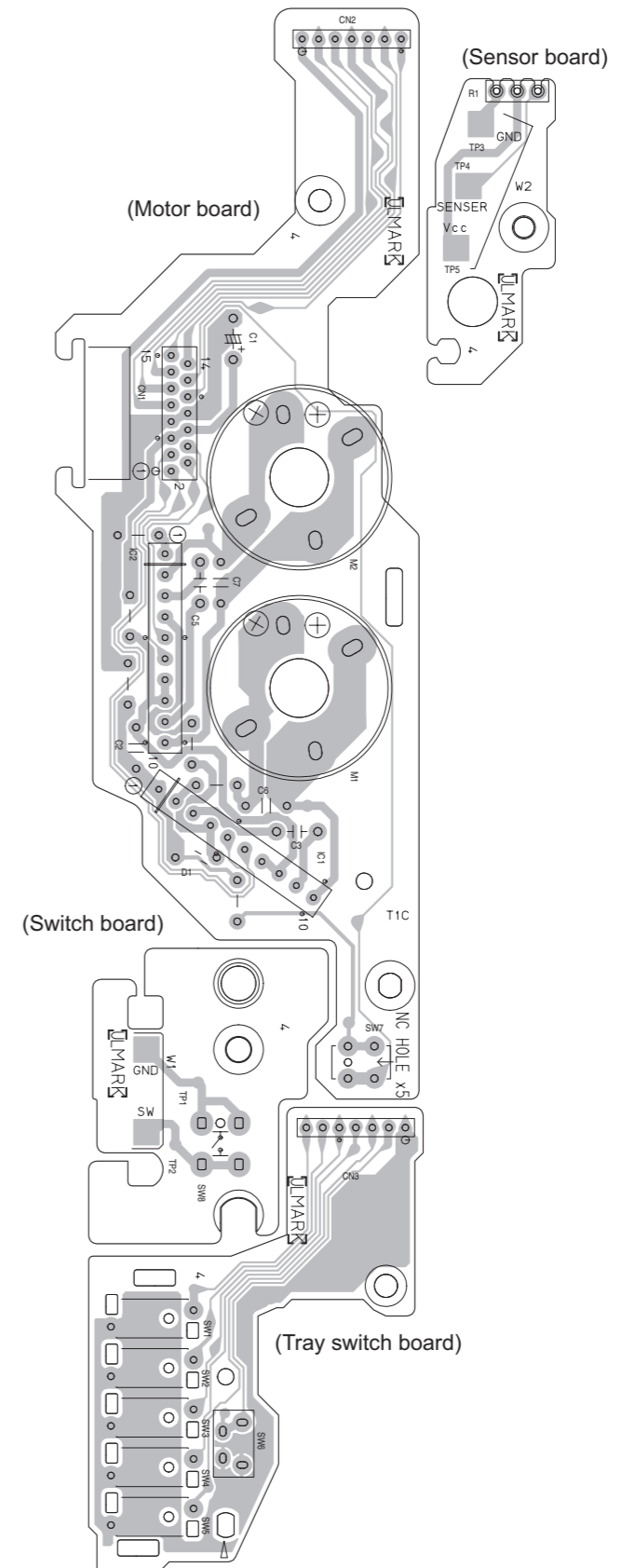
(Front board)



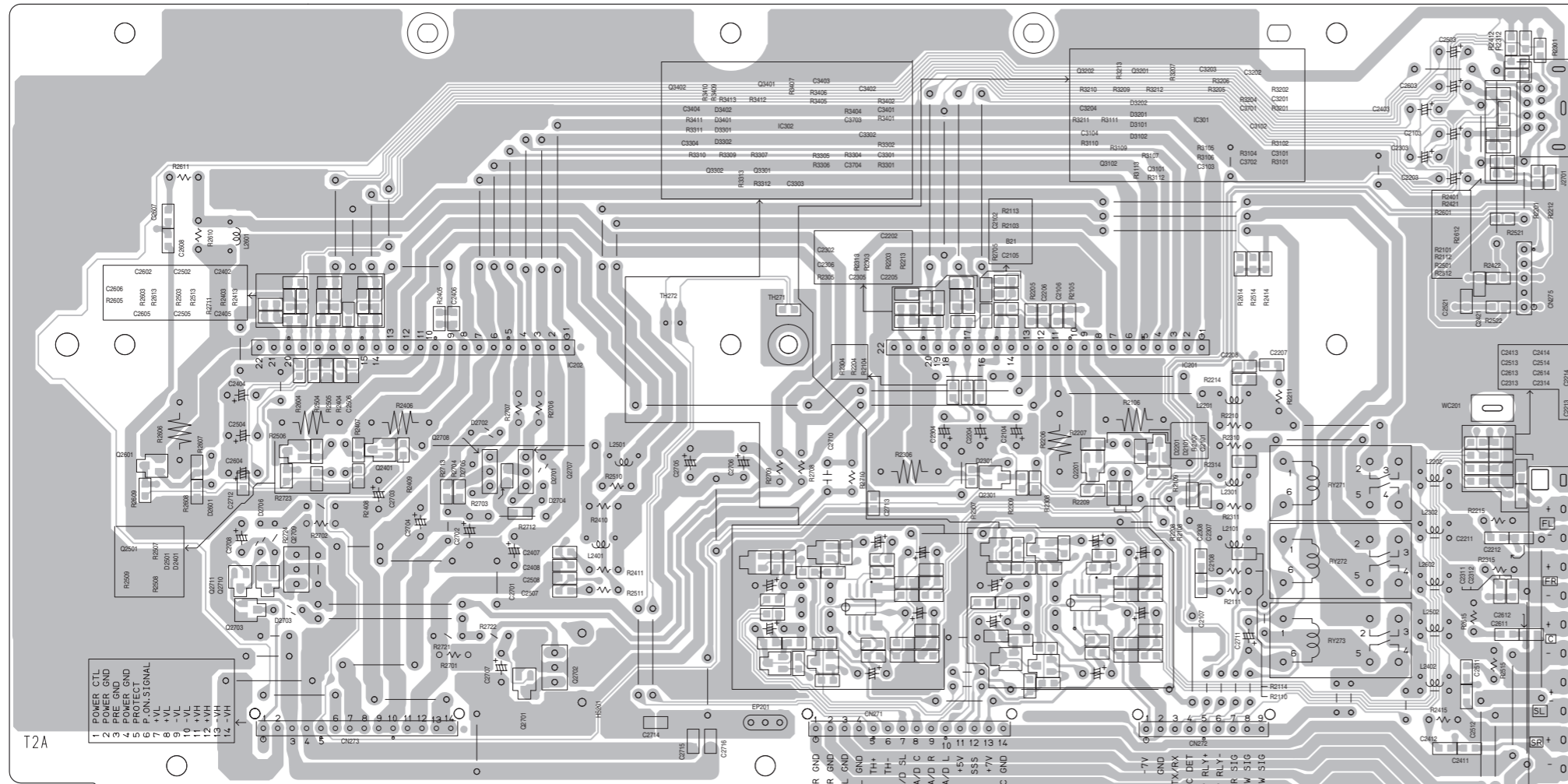
■ **DVD servo board** Lead free solder used in the board (material : Sn-Ag-Cu, melting point : 219 Centigrade)



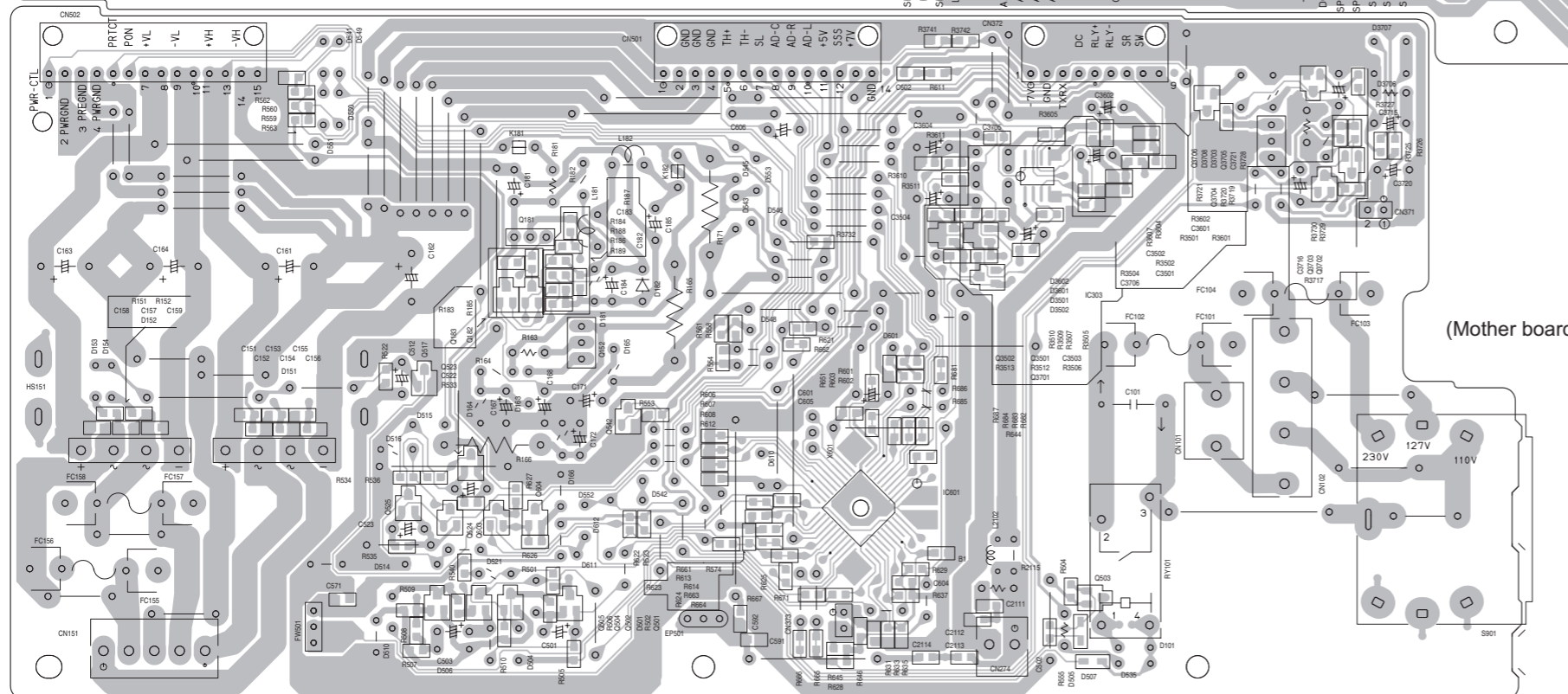
■ **Loading board** Lead free solder used in the board (material : Sn-Ag-Cu, melting point : 219 Centigrade)



■ Sub woofer board Lead free solder used in the board (material : Sn-Ag-Cu, melting point : 219 Centigrade)

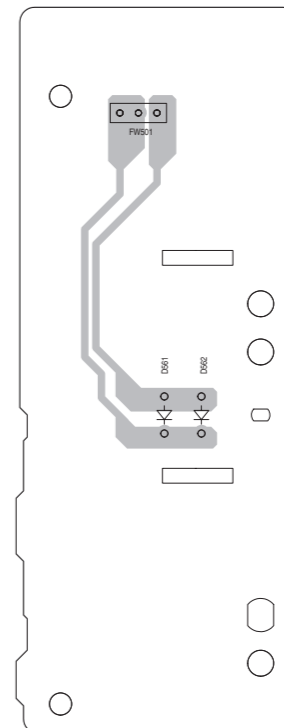


(Amp board)



(Mother board)

(LED board)



< MEMO >

JVC

Victor Company of Japan, Limited

Audio/Video Systems Category 10-1, 1chome, Ohwatari-machi, Maebashi-city, 371-8543, Japan

(No.MB511SCH)



Printed in Japan
VPT