

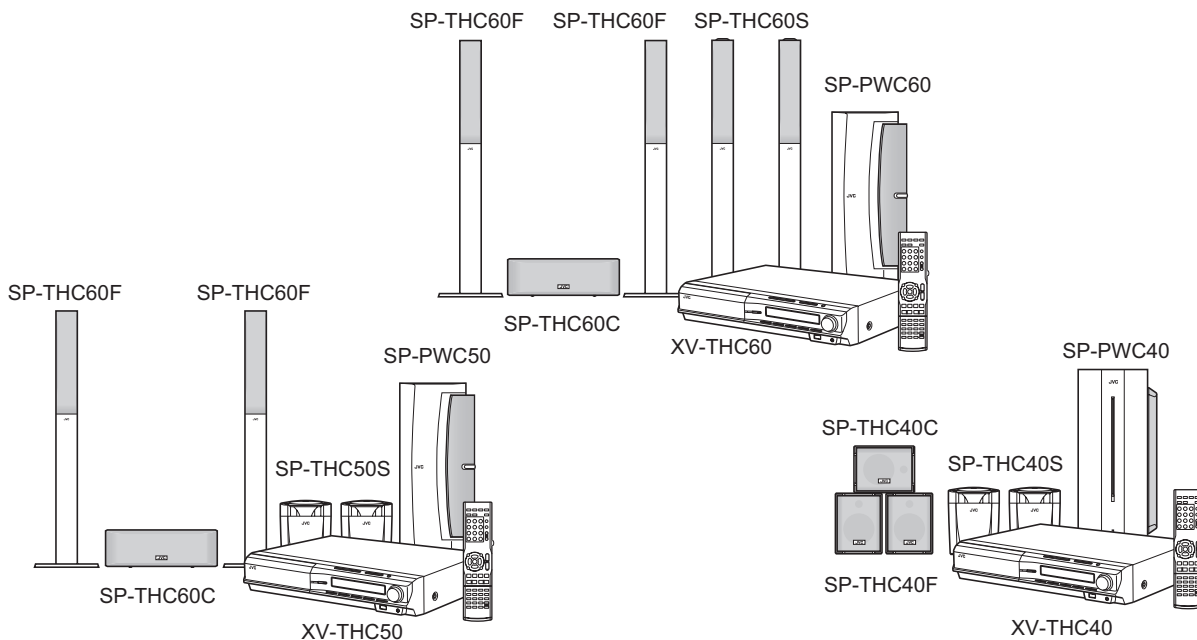
JVC

SCHEMATIC DIAGRAMS

DVD DIGITAL THEATER SYSTEM

TH-C60J, TH-C60C TH-C50J, TH-C50C TH-C40J, TH-C40C

CD-ROM No.SML200605



AV COMPU LINK

Digital Direct Progressive Scan

Lead free solder used in the board (material : Sn-Ag-Cu, melting point : 219 Centigrade)

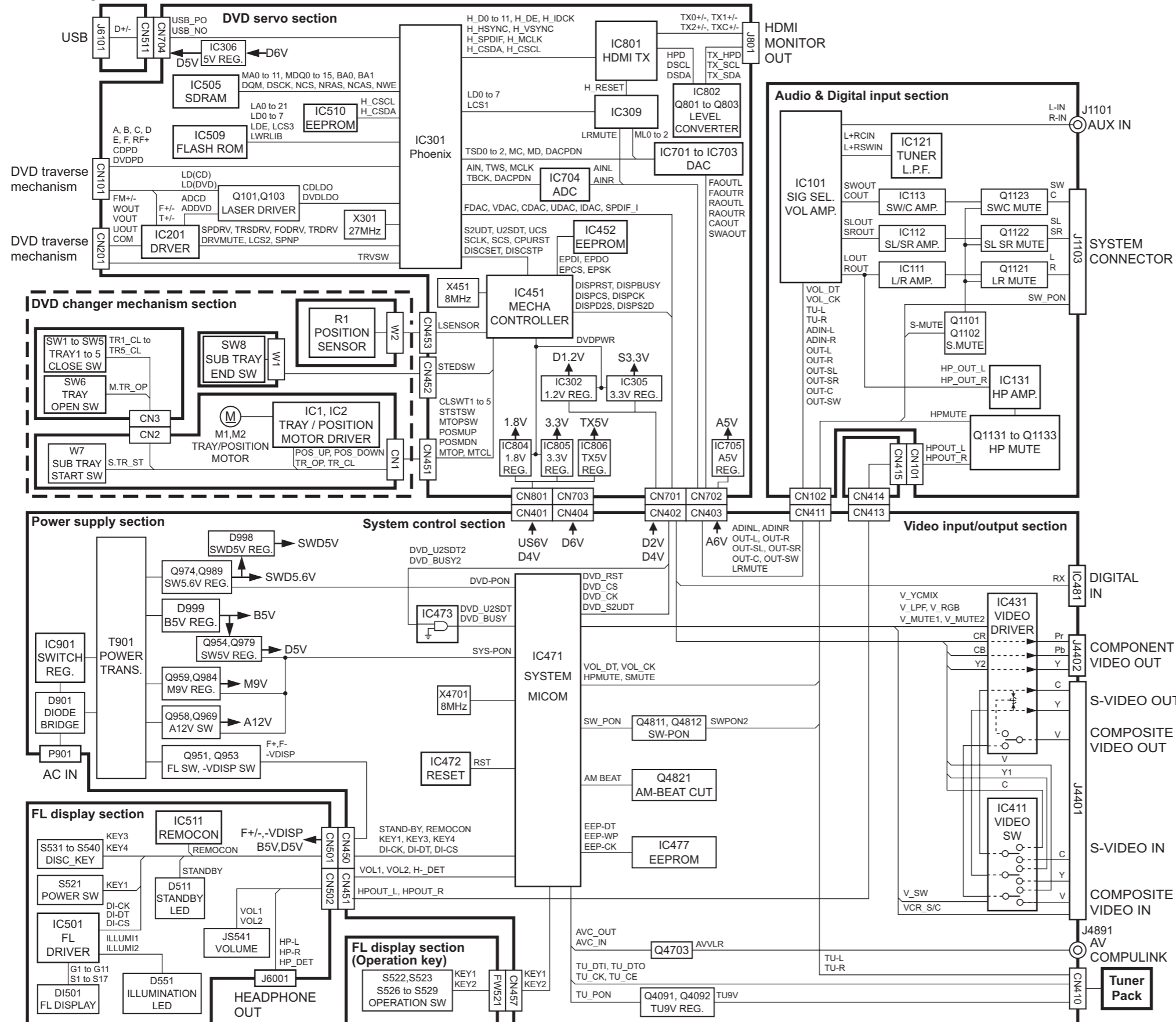
Contents

| | |
|-----------------------------------|------------|
| Block diagrams | 2-1 |
| Standard schematic diagrams | 2-2 |
| Printed circuit boards | 2-13 to 16 |

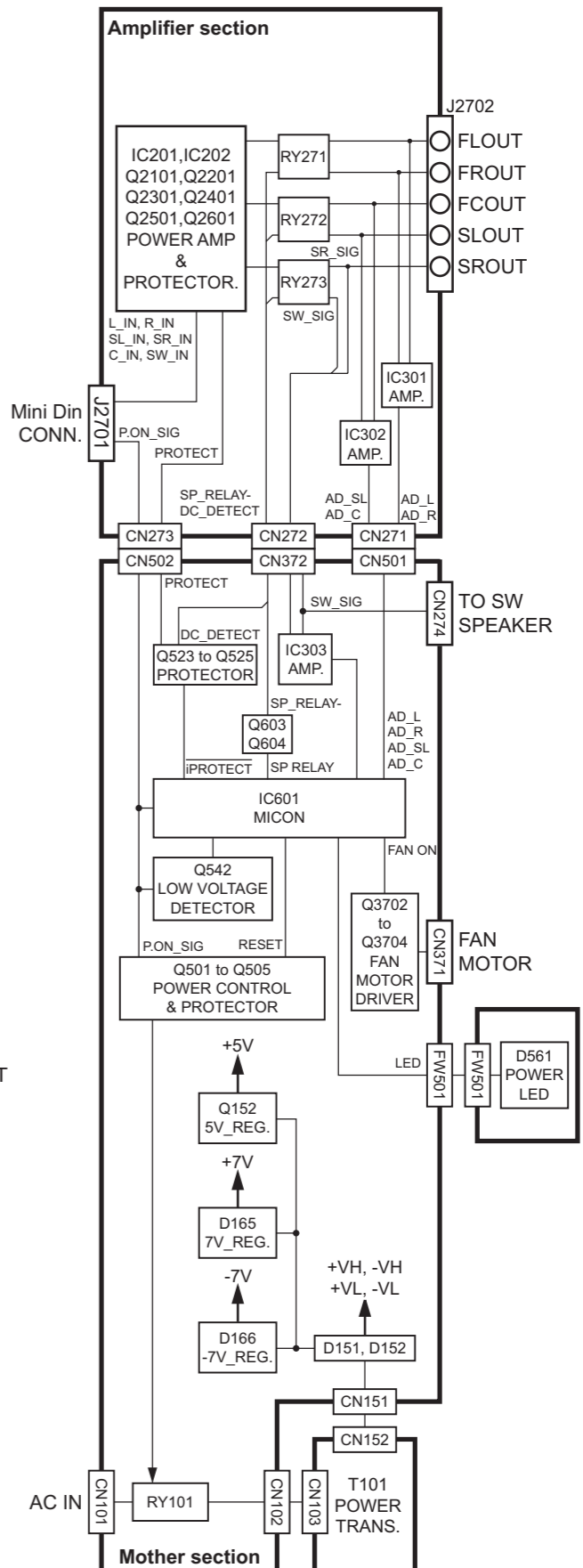
In regard with component parts appearing on the silk-screen printed side (parts side) of the PWB diagrams, the parts that are printed over with black such as the resistor (■), diode (▣) and ICP (●) or identified by the "⚠" mark nearby are critical for safety.

Block diagram

<Main body section>

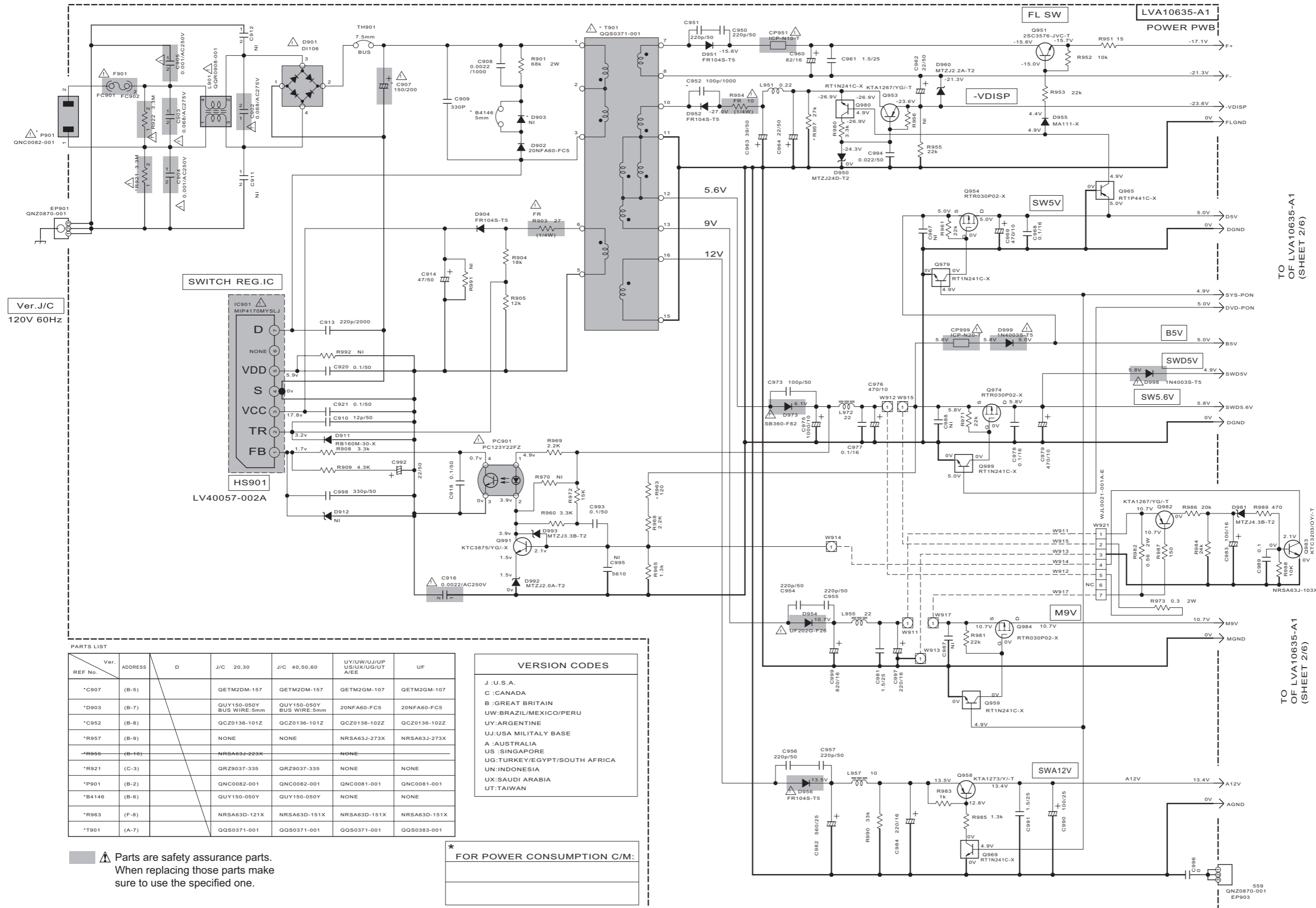


<Subwoofer section>



Standard schematic diagrams

Power section



TO OF LVA10635-A1
(SHEET 2/6)

TO OF LVA10635-A1
(SHEET 2/6)

PARTS LIST

| Ver. | ADDRESS | D | J/C 20,30 | J/C 40,50,60 | UY/UW/UJ/UP US/UX/UG/UT A/EE | UF |
|--------|---------|---|-----------------------------|-----------------------------|------------------------------------|--------------|
| *C907 | (B-5) | | QETM2DM-157 | QETM2DM-157 | QETM2GM-107 | QETM2GM-107 |
| *D903 | (B-7) | | QUY150-050Y BUS WIRE:5mm | QUY150-050Y BUS WIRE:5mm | 20NFA60-FC5 | 20NFA60-FC5 |
| *C952 | (B-8) | | QCZ0136-101Z | QCZ0136-101Z | QCZ0136-102Z | QCZ0136-102Z |
| *R957 | (B-9) | | NONE | NONE | NRSA63J-273X | NRSA63J-273X |
| *R955 | (B-10) | | NRSA63J-223X | | NONE | |
| *R921 | (C-3) | | QRZ9037-335 | QRZ9037-335 | NONE | NONE |
| *P901 | (B-2) | | QNC0082-001 | QNC0082-001 | QNC0081-001 | QNC0081-001 |
| *B4146 | (B-6) | | QUY150-050Y | QUY150-050Y | NONE | NONE |
| *R963 | (F-8) | | NRSA63D-121X | NRSA63D-151X | NRSA63D-151X | NRSA63D-151X |
| *T901 | (A-7) | | QQS0371-001 | QQS0371-001 | QQS0371-001 | QQS0383-001 |

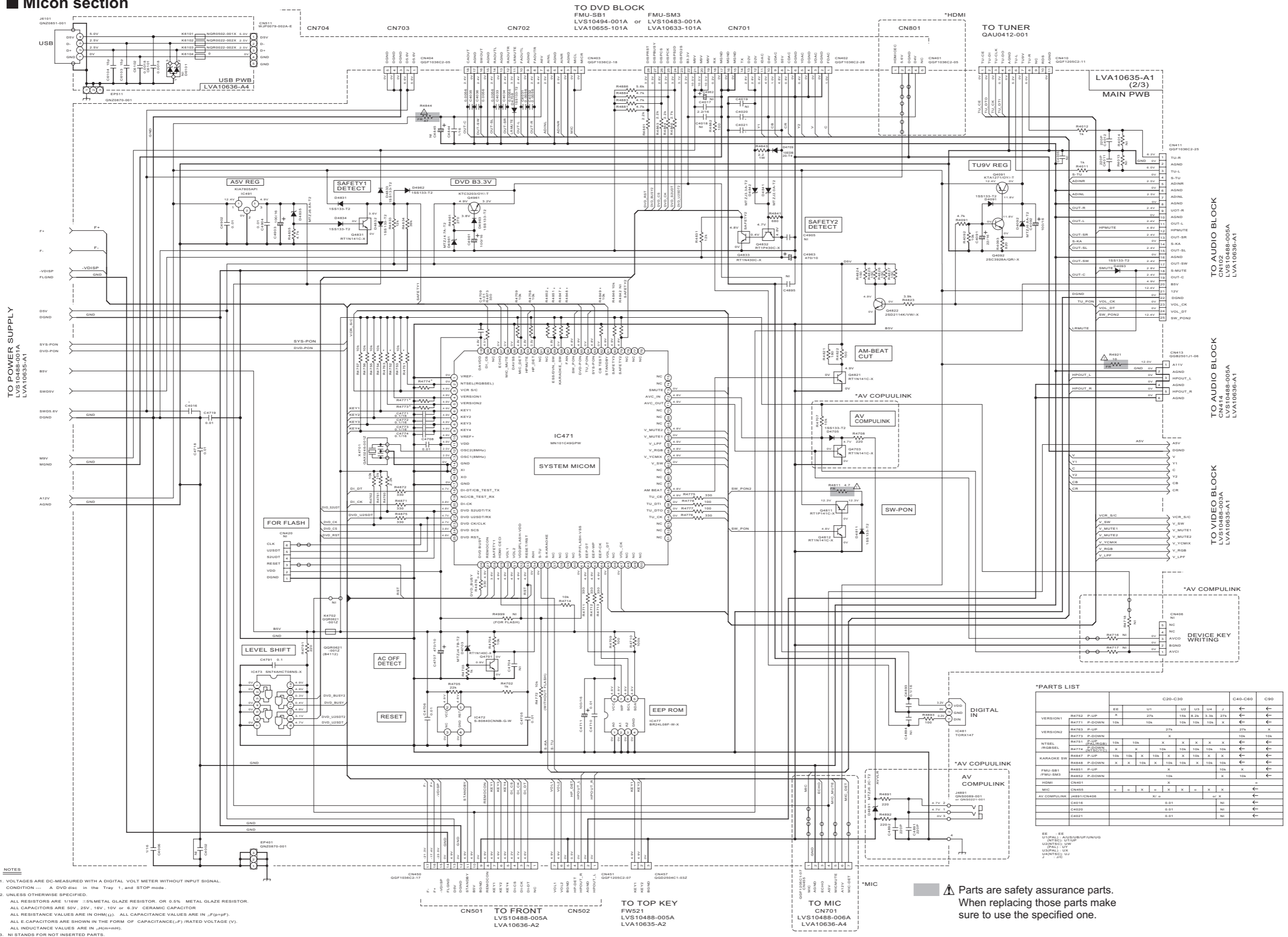
VERSION CODES

J : U.S.A.
 C : CANADA
 B : GREAT BRITAIN
 UW : BRAZIL/MEXICO/PERU
 UY : ARGENTINE
 UJ : USA MILITARY BASE
 A : AUSTRALIA
 US : SINGAPORE
 UG : TURKEY/EGYPT/SOUTH AFRICA
 UN : INDONESIA
 UX : SAUDI ARABIA
 UT : TAIWAN

⚠ Parts are safety assurance parts.
When replacing those parts make
sure to use the specified one.

* FOR POWER CONSUMPTION C/M:

Micon section



NOTES

- VOLTAGES ARE DC-MEASURED WITH A DIGITAL VOLT METER WITHOUT INPUT SIGNAL. CONDITION: ... A DVD disc in the Tray 1, and STOP mode.
- UNLESS OTHERWISE SPECIFIED, ALL RESISTORS ARE 1/16W ±5% METAL GLAZE RESISTOR, OR 0.5% METAL GLAZE RESISTOR. ALL CAPACITORS ARE 50V, 25V, 16V, 10V or 6.3V CERAMIC CAPACITOR. ALL RESISTANCE VALUES ARE IN OHM(Ω). ALL CAPACITANCE VALUES ARE IN μF(μF) or pF. ALL CAPACITORS ARE SHOWN IN THE FORM OF CAPACITANCE(μF)/RATED VOLTAGE (V).
- ALL INDUCTANCE VALUES ARE IN μH(mH).
- NI STANDS FOR NOT INSERTED PARTS.

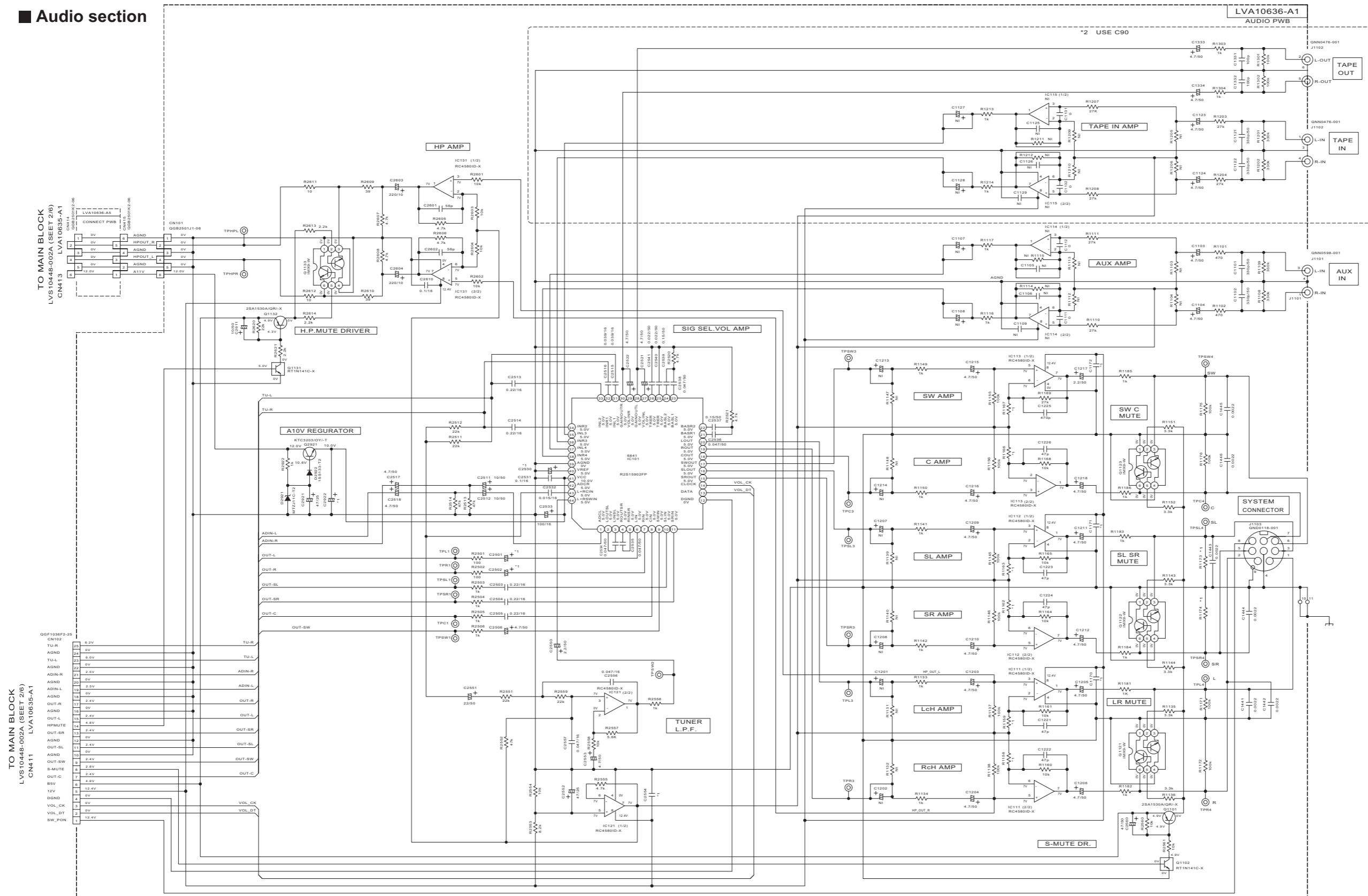
***PARTS LIST**

| | EE | U1 | U2 | U3 | U4 | J | C40-C46 | C90 |
|-------------|--------------|-----|------|-----|-----|------|---------|-----|
| VERSION1 | R4750 P-UP | X | 27k | 10k | 10k | 3.3k | 27k | ← |
| | R4771 P-DOWN | 10k | 10k | 10k | 10k | 10k | X | ← |
| VERSION2 | R4773 P-DOWN | | 27k | | | | 27k | X |
| | R4773 P-DOWN | | X | | | | 10k | 10k |
| NTSEL | R4791 P-UP | 10k | 10k | X | X | X | X | ← |
| IRGBSEL | R4774 P-DOWN | X | X | X | X | X | X | ← |
| KARAOKE SW | R4547 P-UP | 10k | 10k | X | 10k | X | X | ← |
| | R4547 P-UP | X | X | 10k | X | 10k | 10k | ← |
| | R4548 P-DOWN | X | X | 10k | X | 10k | 10k | ← |
| FMU-SB1 | R4851 P-UP | | X | | | | 10k | X |
| FMU-SM3 | R4852 P-DOWN | | 10k | | | | X | 10k |
| HDMI | CN401 | | X | | | | | |
| MIC | CN405 | X | X | X | X | X | X | ← |
| AV COMPLINK | J4811CN406 | X | X | X | X | X | X | ← |
| | C4016 | | 0.01 | | | | NI | ← |
| | C4020 | | 0.01 | | | | NI | ← |
| | C4021 | | 0.01 | | | | NI | ← |

EE: EE
 MIPAL: MIPAL/USUB/IFUN/UG
 MIPAL: MIPAL/USUB/IFUN/UG
 UZINTSC: UZINTSC/USUB/IFUN/UG
 UZINTSC: UZINTSC/USUB/IFUN/UG
 UZINTSC: UZINTSC/USUB/IFUN/UG
 UZINTSC: UZINTSC/USUB/IFUN/UG

⚠ Parts are safety assurance parts. When replacing those parts make sure to use the specified one.

Audio section



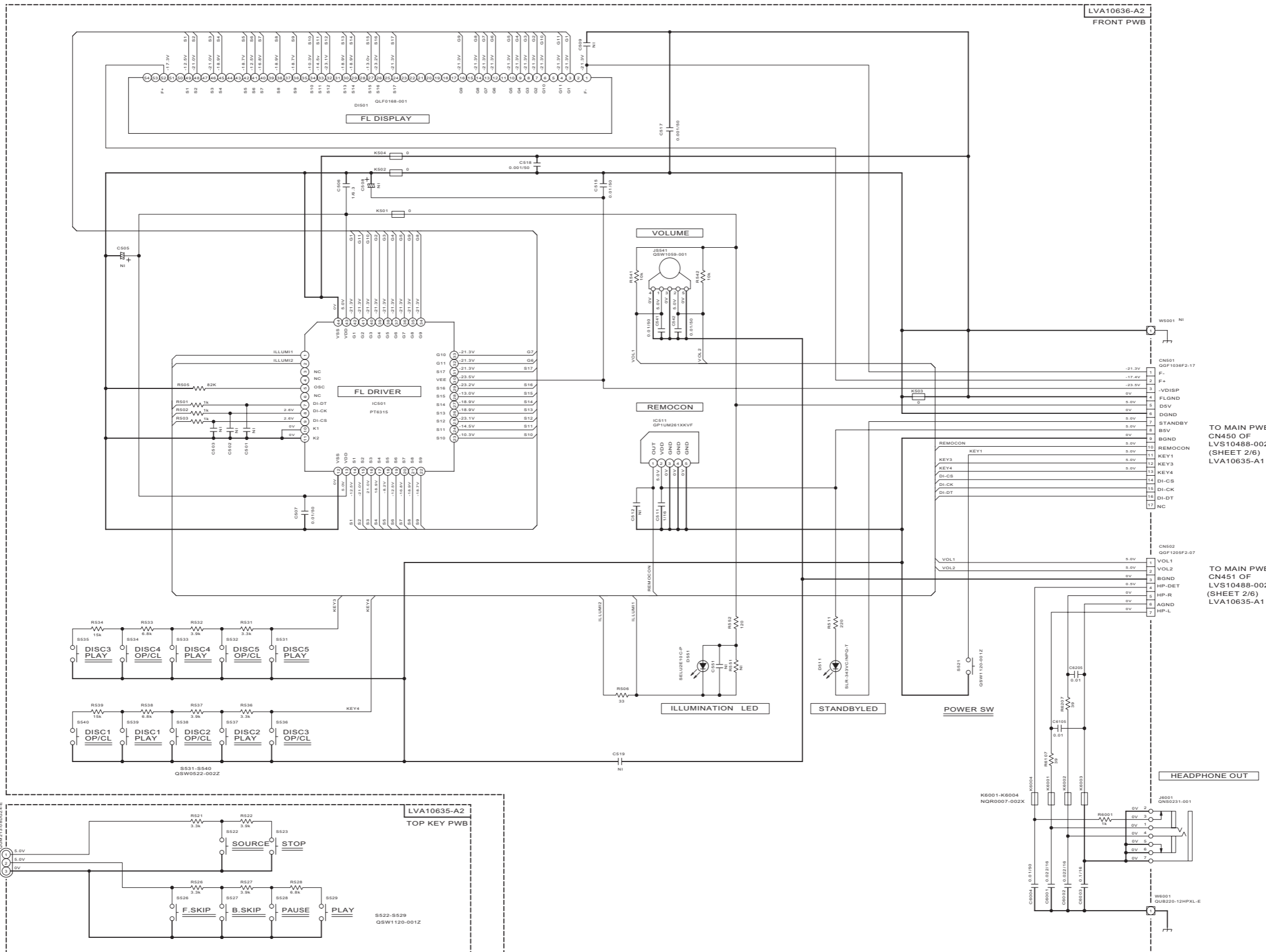
- NOTES
- VOLTAGES ARE DC-MEASURED WITH A DIGITAL VOLT METER WITHOUT INPUT SIGNAL. CONDITION ... A CD disc in the Tray 1, and PLAY mode.
 - UNLESS OTHERWISE SPECIFIED. ALL RESISTORS ARE 1/16W ±5% METAL GLAZE RESISTOR. OR 0.5% METAL GLAZE RESISTOR. ALL CAPACITORS ARE 50V, 25V, 16V, 10V or 6.3V CERAMIC CAPACITOR. ALL RESISTANCE VALUES ARE IN OHM(Ω). ALL CAPACITANCE VALUES ARE IN pF(pF). ALL R CAPACITORS ARE SHOWN IN THE FORM OF CAPACITANCE(μF)/RATED VOLTAGE (V). ALL INDUCTANCE VALUES ARE IN μH(mH).
 - NI STANDS FOR NOT INSERTED PARTS.

*1 PARTS LIST

| | R1158 | R1159 | R1162 | R1163 | R1166 | R1167 | R1173 | R1174 | C1170 | C1171 | C1172 | C1446 | C2554 | C2501 | C2502 | C2530 | C2922 |
|-------------|-------|-------|-------|-------|-------|---------|--------|--------|--------|--------|--------|-------|-------|-------|-------|-------|-------|
| XV-THC20/26 | 10k | 68k | 10k | 18k | 100k | 0.01/50 | 0.0022 | 0.1/50 | 1/50 | 100/16 | 100/16 | | | | | | |
| XV-THC30/40 | 10k | 10k | 10k | 18k | 100k | 0.01/50 | 0.0022 | 0.1/50 | 1/50 | 100/16 | 100/16 | | | | | | |
| XV-THC50/43 | 10k | 10k | 15k | 10k | 100k | 1/16 | 0.001 | 1/16 | 4.7/50 | 47/25 | 100/25 | | | | | | |
| XV-THC60/67 | 10k | - | 15k | 9.1k | 3.9k | 1/16 | 0.001 | 1/16 | 4.7/50 | 47/25 | 100/25 | | | | | | |

*2 USE C90

■ Front section



NOTES

- VOLTAGES ARE DC-MEASURED WITH A DIGITAL VOLT METER WITHOUT INPUT SIGNAL.
CONDITION --- A CD disc in the Tray 1, and PLAY mode.
- UNLESS OTHERWISE SPECIFIED,
ALL RESISTORS ARE 1/16W ±5% METAL GLAZE RESISTOR, OR 0.5% METAL GLAZE RESISTOR.
ALL CAPACITORS ARE 50V, 25V, 16V, 10V or 6.3V CERAMIC CAPACITOR
ALL RESISTANCE VALUES ARE IN OHM(Ω).
ALL CAPACITANCE VALUES ARE IN μF(p=pF).
ALL E.CAPACITORS ARE SHOWN IN THE FORM OF CAPACITANCE(_tF)/RATED VOLTAGE (V).
ALL INDUCTANCE VALUES ARE IN μH(m=mH).
- NI STANDS FOR NOT INSERTED PARTS.

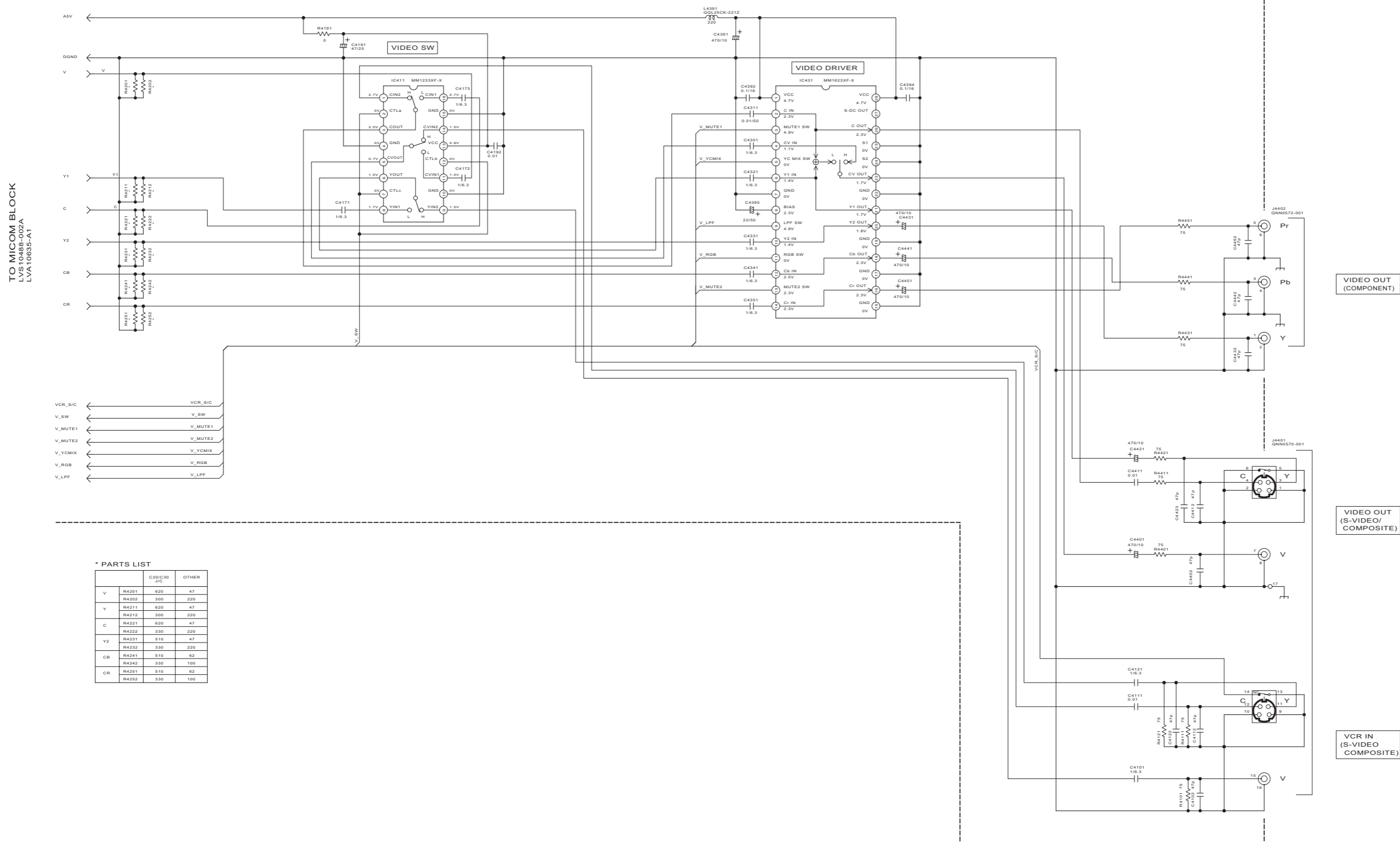
TO MAIN PWB
CN457 OF
LVS10488-002A
(SHEET 2/6)
LVA10635-A1

TO MAIN PWB
CN450 OF
LVS10488-002A
(SHEET 2/6)
LVA10635-A1

TO MAIN PWB
CN451 OF
LVS10488-002A
(SHEET 2/6)
LVA10635-A1

Video section

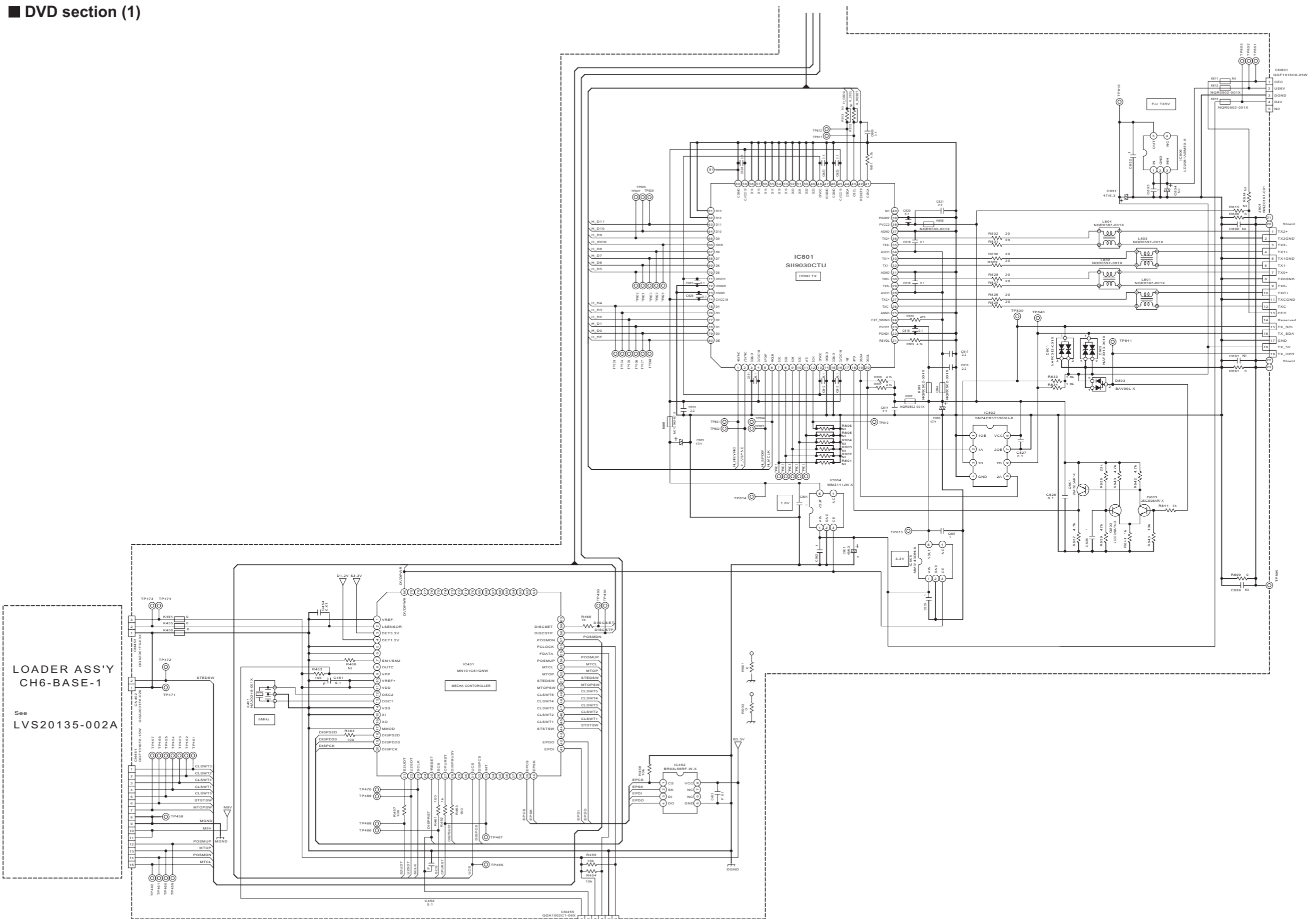
LVA10635-A1 (3/3)
MAIN PWB



* PARTS LIST

| | | C20/C30 SIC | OTHER |
|----|-------|----------------|-------|
| V | R4201 | 620 | 47 |
| | R4202 | 300 | 220 |
| Y | R4211 | 620 | 47 |
| | R4212 | 300 | 220 |
| C | R4221 | 620 | 47 |
| | R4222 | 330 | 220 |
| Y2 | R4231 | 510 | 47 |
| | R4232 | 330 | 220 |
| CB | R4241 | 510 | 62 |
| | R4242 | 330 | 100 |
| CR | R4251 | 510 | 62 |
| | R4252 | 330 | 100 |

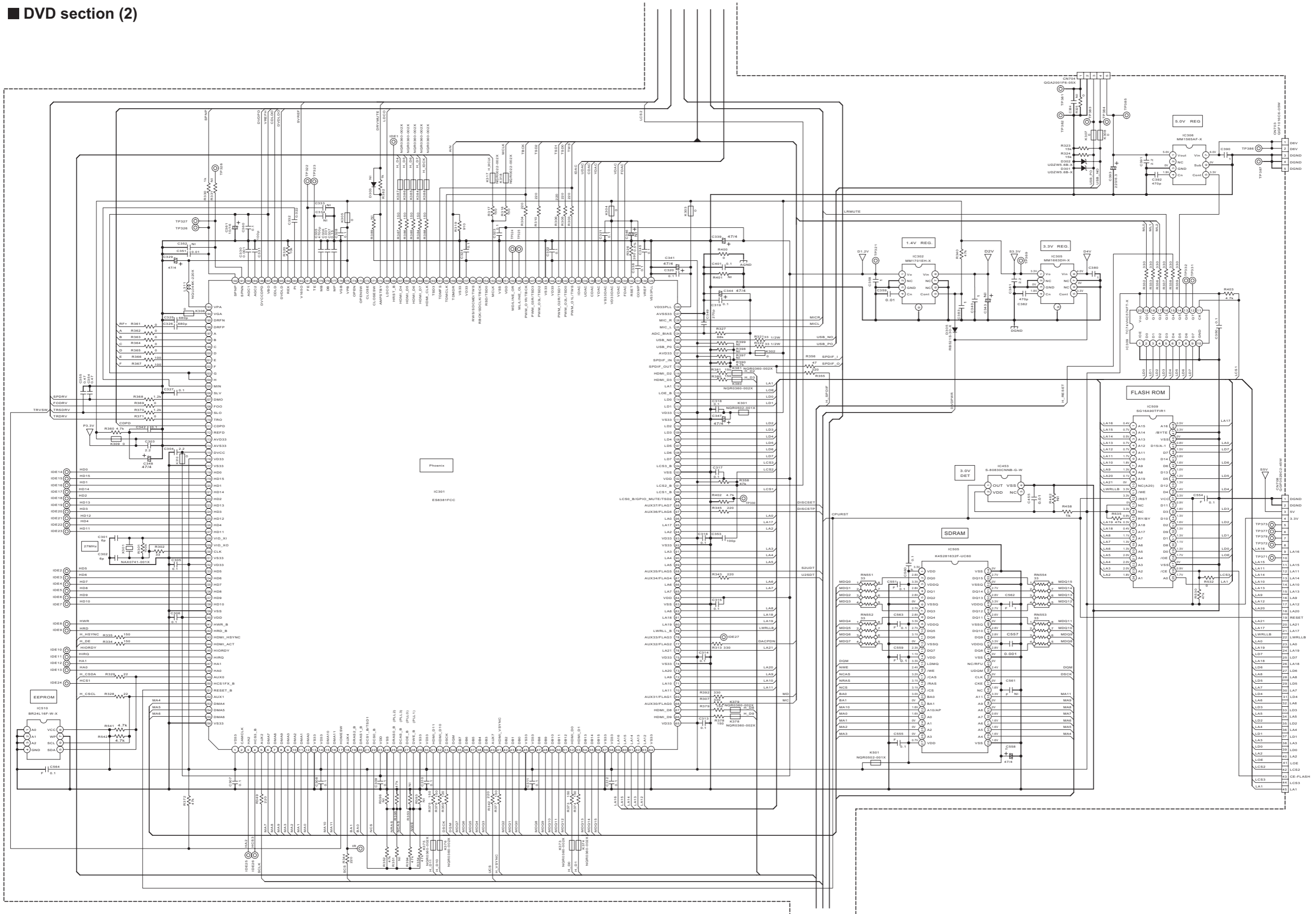
■ DVD section (1)



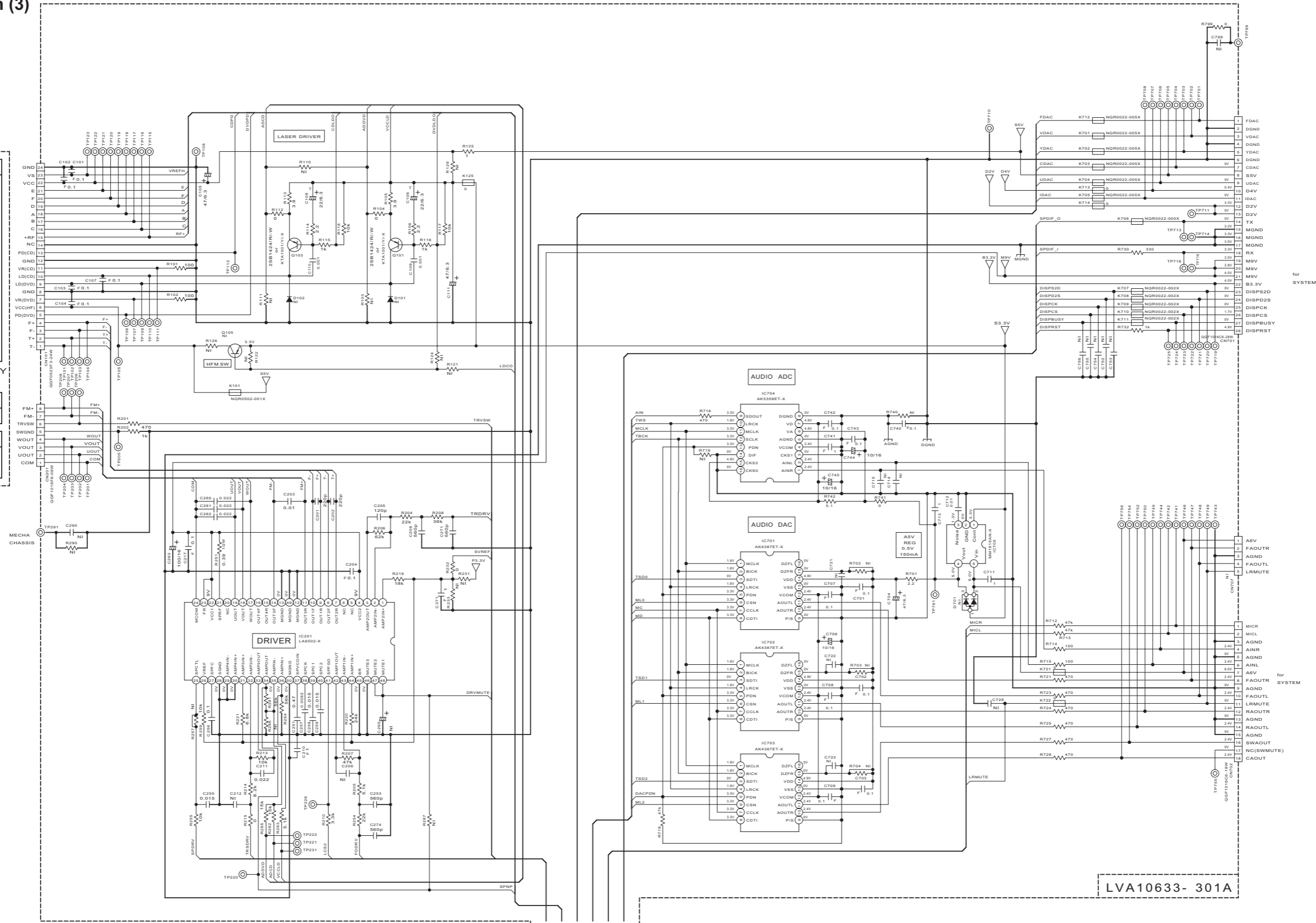
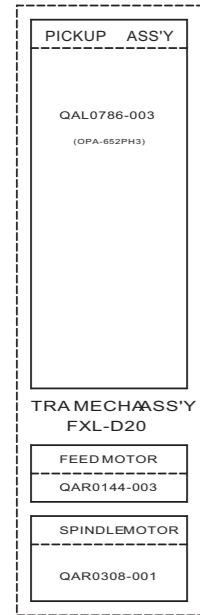
LOADER ASS'Y
CH6-BASE-1

See
LVS20135-002A

■ DVD section (2)



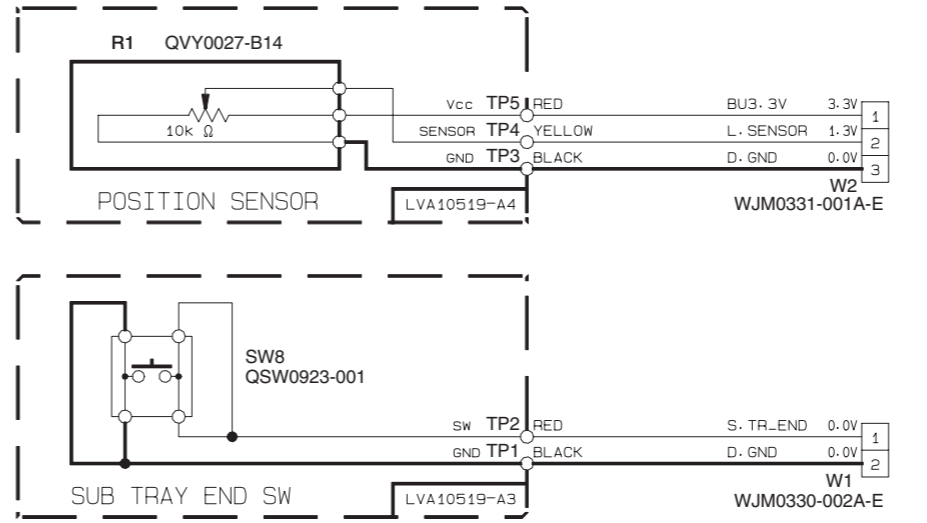
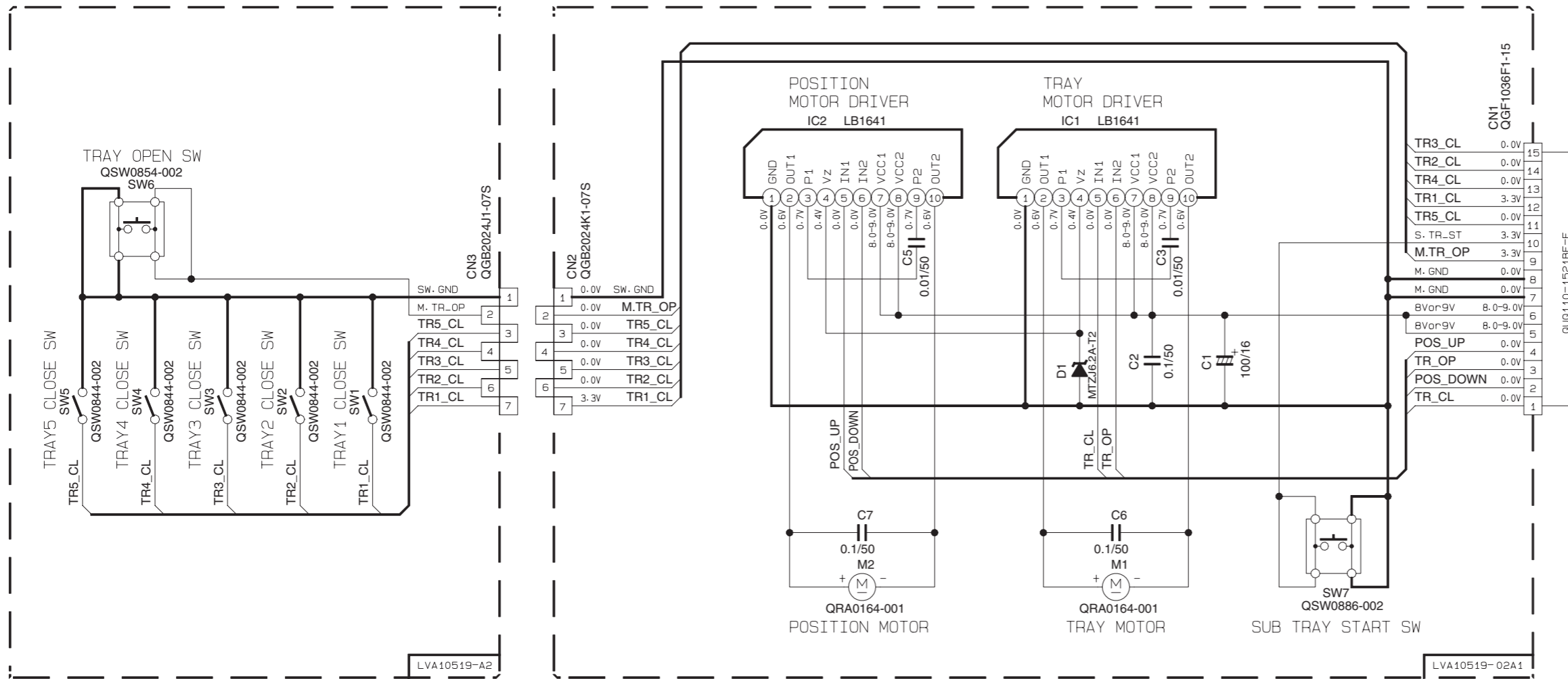
■ DVD section (3)



- NOTES**
1. VOLTAGES ARE DC-MEASURED WITH A DIGITAL VOLT METER WITHOUT INPUT SIGNAL.
CONDITION --- A DVD disc in the Tray 1, and STOP mode.
 2. UNLESS OTHERWISE SPECIFIED.
ALL RESISTORS ARE 1/16W ±5% METAL GLAZE RESISTOR, OR 0.5% METAL GLAZE RESISTOR.
ALL CAPACITORS ARE 50V, 25V, 16V, 10V, OR 6.3V CERAMIC CAPACITOR
ALL RESISTANCE VALUES ARE IN OHM(Ω).
ALL CAPACITANCE VALUES ARE IN pF(pf).
ALL E-CAPACITORS ARE SHOWN IN THE FORM OF CAPACITANCE(μF)/RATED VOLTAGE (V).
ALL INDUCTANCE VALUES ARE IN μH(mmh).
 3. NI STANDS FOR NOT INSERTED PARTS.

LVA10633- 301A

■ Loader section

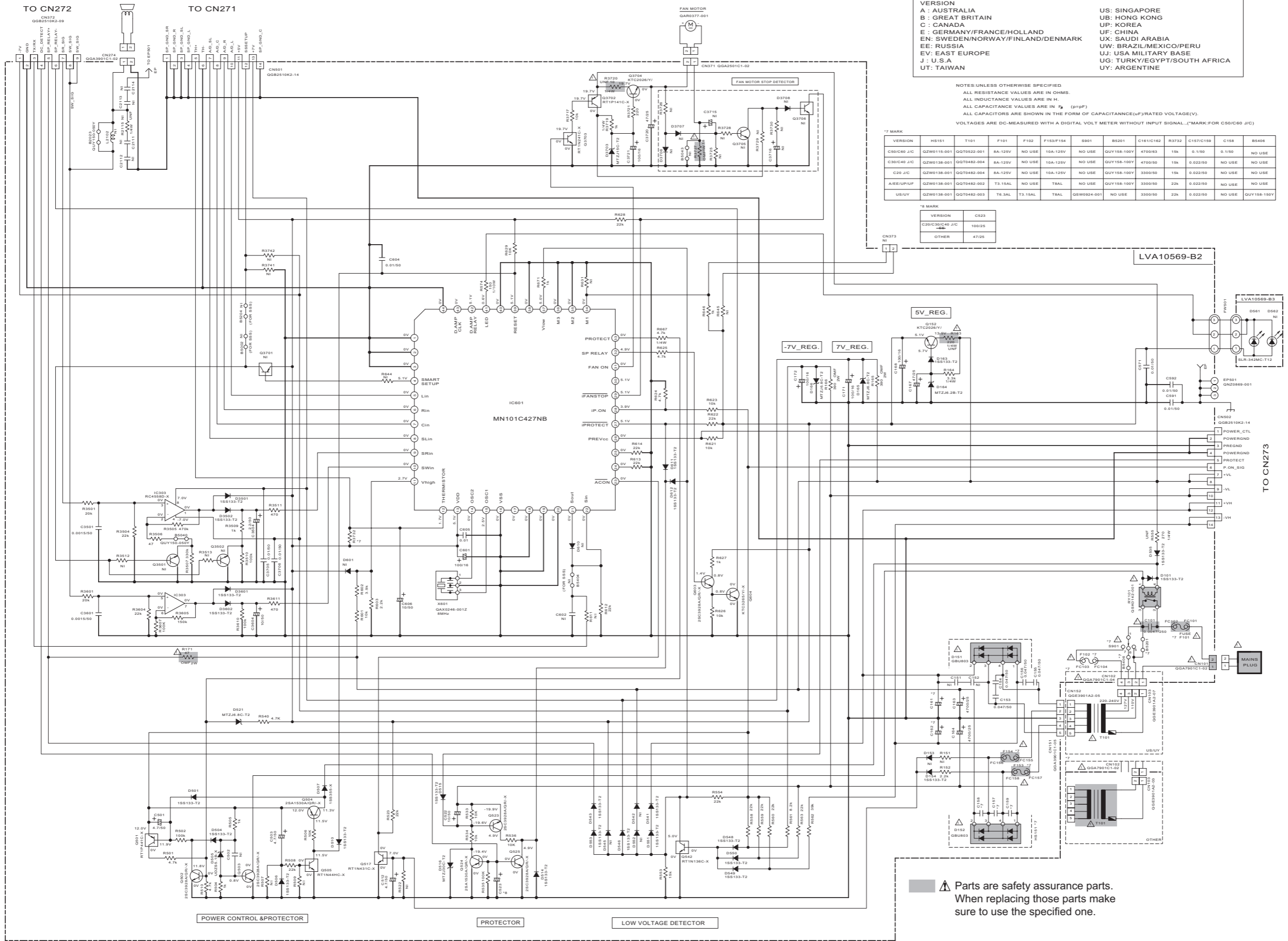


TO POWER AND MECHA CONTROL MICOM

NOTES

1. VOLTAGES ARE DC-MEASURED WITH A DIGITAL VOLT METER. CONDITION: DISC1 STOP
2. UNLESS OTHERWISE SPECIFIED. ALL CAPACITORS ARE SHOWN IN THE FORM OF CAPACITANCE (μF)/RATED VOLTAGE (V).
3. NI STANDS FOR NOT INSERTED PARTS.

Sub woofer power supply section



VERSION

| | |
|------------------------------------|--------------------------------|
| A : AUSTRALIA | US : SINGAPORE |
| B : GREAT BRITAIN | UB : HONG KONG |
| C : CANADA | UP : KOREA |
| E : GERMANY/FRANCE/HOLLAND | UF : CHINA |
| EE : SWEDEN/NORWAY/FINLAND/DENMARK | UX : SAUDI ARABIA |
| EE : RUSSIA | UW : BRAZIL/MEXICO/PERU |
| EJ : EAST EUROPE | UJ : USA MILITARY BASE |
| J : U.S.A | UG : TURKEY/EGYPT/SOUTH AFRICA |
| UT : TAIWAN | UY : ARGENTINE |

NOTES: UNLESS OTHERWISE SPECIFIED
 ALL RESISTANCE VALUES ARE IN OHMS.
 ALL INDUCTANCE VALUES ARE IN H.
 ALL CAPACITANCE VALUES ARE IN F (pF)
 ALL CAPACITORS ARE SHOWN IN THE FORM OF CAPACITANCE(UF)/RATED VOLTAGE(V).
 VOLTAGES ARE DC-MEASURED WITH A DIGITAL VOLT METER WITHOUT INPUT SIGNAL. (*MARK: FOR C50/C60 J/C)

***7 MARK**

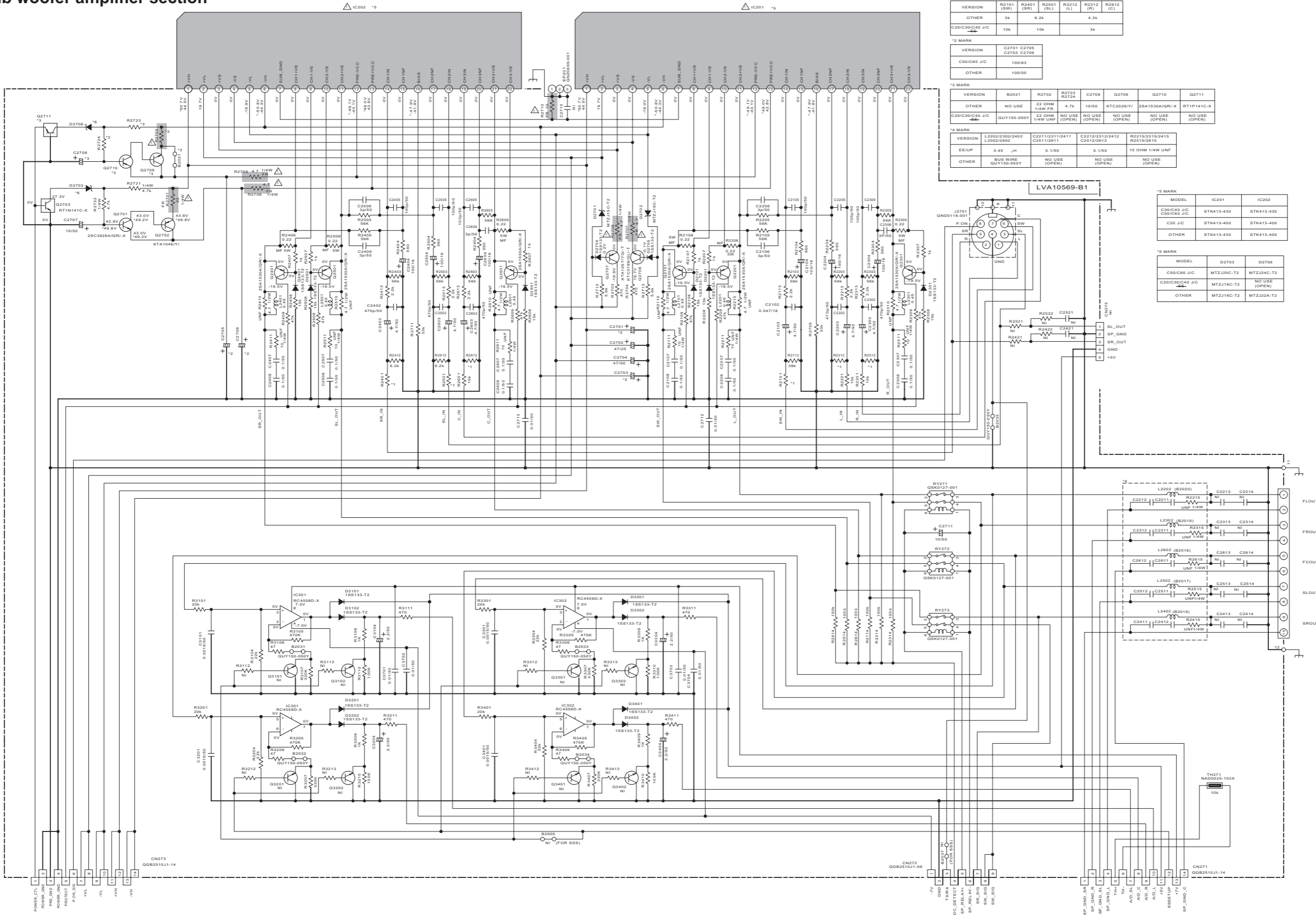
| VERSION | H8151 | T101 | F101 | F102 | F153/F154 | B901 | B201 | C161/C162 | R3732 | C157/C159 | C158 | B5408 |
|-------------|-------------|-------------|---------|---------|-----------|-------------|-------------|-----------|-------|-----------|--------|-------------|
| C50/C60 J/C | Q2W0115-001 | GGT0522-001 | 8A-125V | NO USE | 10A-125V | NO USE | QUY158-100Y | 4700/63 | 15k | 0.1/50 | 0.1/50 | NO USE |
| C30/C49 J/C | Q2W0138-001 | GGT0482-004 | 8A-125V | NO USE | 10A-125V | NO USE | QUY158-100Y | 4700/50 | 15k | 0.022/50 | NO USE | NO USE |
| C20 J/C | Q2W0138-001 | GGT0482-004 | 8A-125V | NO USE | 10A-125V | NO USE | QUY158-100Y | 3300/50 | 15k | 0.022/50 | NO USE | NO USE |
| A/E/E/UP/UF | Q2W0138-001 | GGT0482-002 | T3-15AL | NO USE | T8AL | NO USE | QUY158-100Y | 3300/50 | 22k | 0.022/50 | NO USE | NO USE |
| US/UY | Q2W0138-001 | GGT0482-003 | T6-3AL | T3-15AL | T8AL | Q5W0924-001 | NO USE | 3300/50 | 22k | 0.022/50 | NO USE | QUY158-100Y |

***8 MARK**

| VERSION | C523 |
|-----------------|--------|
| C20/C30/C49 J/C | 100/25 |
| OTHER | 47/25 |

⚠ Parts are safety assurance parts.
 When replacing those parts make sure to use the specified one.

Sub woofer amplifier section



*1 MARK

| VERSION | R2101 (SW) | R2401 (BR) | R2501 (SL) | R2112 (L) | R2312 (R) | R2612 (C) |
|------------------|------------|------------|------------|-----------|-----------|-----------|
| OTHER | 3k | 6.2k | | 4.3k | | |
| C200/C30/C40 J/C | 10k | 10k | | 3k | | |

*2 MARK

| VERSION | C2701 C2705 C2703 C2706 |
|-------------|-------------------------|
| C50/C60 J/C | 100/63 |
| OTHER | 100/50 |

*3 MARK

| VERSION | R2021 | R2702 | R2723 R2724 | C2708 | Q2709 | Q2710 | Q2711 |
|------------------|-------------|-----------------|---------------|---------------|---------------|----------------|---------------|
| OTHER | NO USE | 22 OHM 1/4W FR | 4.7k | 10/50 | KTC2026/Y | 2SA1530A/GRU-X | RT1P141C-X |
| C200/C30/C40 J/C | QUV150-050Y | 22 OHM 1/4W UNF | NO USE (OPEN) | NO USE (OPEN) | NO USE (OPEN) | NO USE (OPEN) | NO USE (OPEN) |

*4 MARK

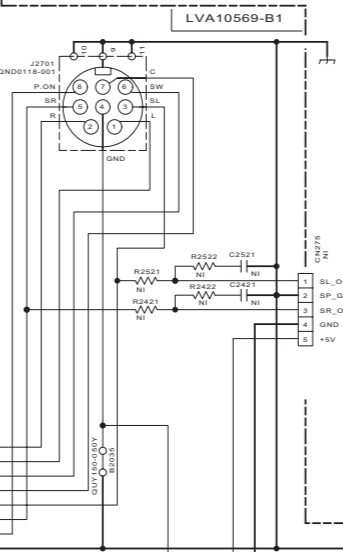
| VERSION | L2202/2302/2402 L2602/2602 | C2211/2311/2411 C2611/2611 | C2212/2312/2412 C2612/2612 | R2215/2315/2415 R2615/2615 |
|---------|----------------------------|----------------------------|----------------------------|----------------------------|
| EE/UP | 0.45 μH | 0.1/50 | 0.1/50 | 10 OHM 1/4W UNF |
| OTHER | BUS WIRE QUV150-050Y | NO USE (OPEN) | NO USE (OPEN) | NO USE (OPEN) |

*5 MARK

| MODEL | IC201 | IC202 |
|-------------|------------|------------|
| C50/C60 J/C | STK413-430 | STK413-430 |
| C20 J/C | STK413-400 | STK413-400 |
| OTHER | STK413-430 | STK413-400 |

*6 MARK

| MODEL | D2703 | D2706 |
|-----------------|------------|---------------|
| C50/C60 J/C | MTZJ20C-T2 | MTZJ24C-T2 |
| C20/C30/C40 J/C | MTZJ16C-T2 | NO USE (OPEN) |
| OTHER | MTZJ16C-T2 | MTZJ22A-T2 |



TO CN502

TO CN372

TO CN501

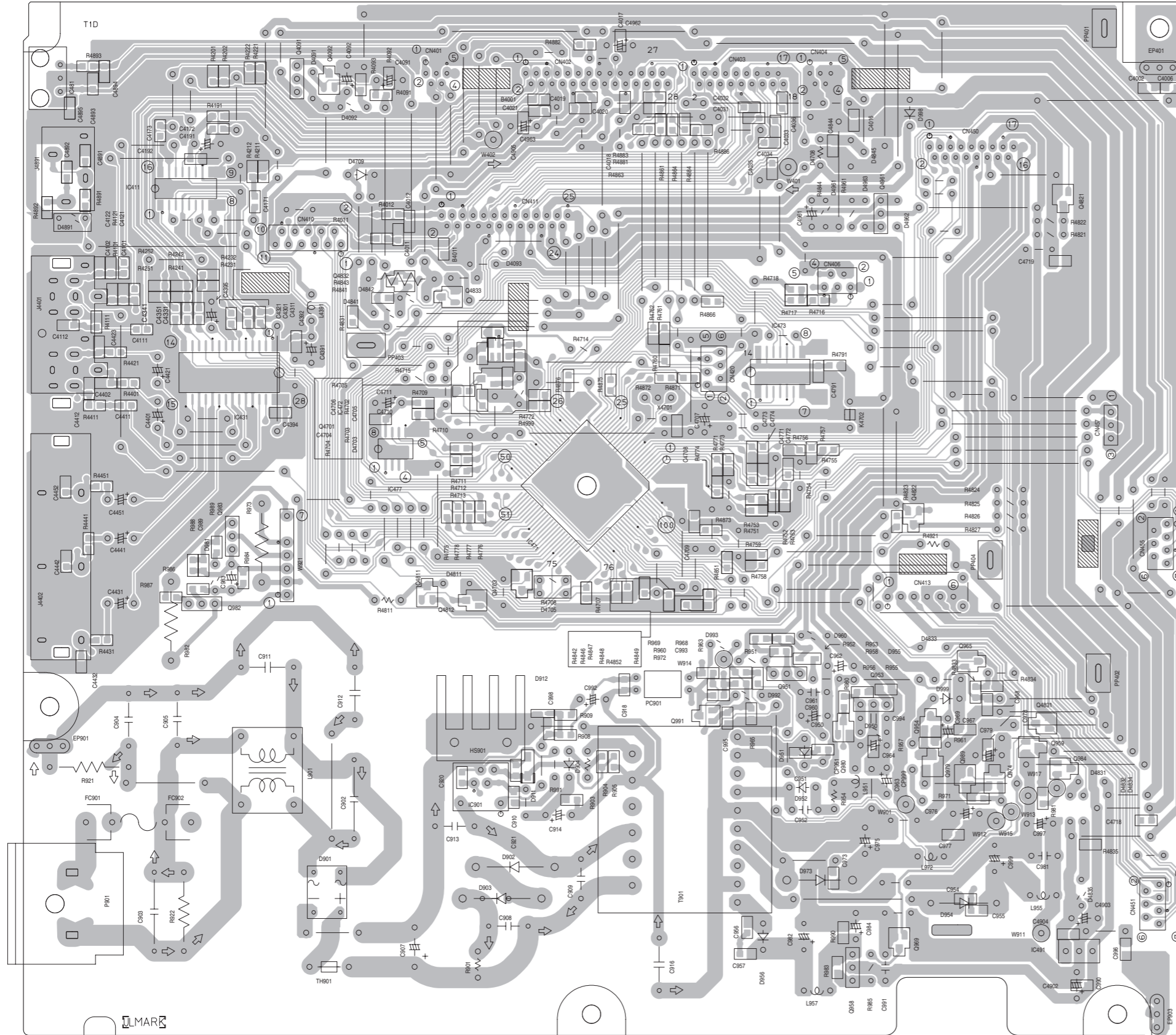
NOTES: UNLESS OTHERWISE SPECIFIED, ALL RESISTANCE VALUES ARE IN OHMS. ALL INDUCTANCE VALUES ARE IN H. ALL CAPACITANCE VALUES ARE IN μF. (p=ppF) ALL CAPACITORS ARE SHOWN IN THE FORM OF CAPACITANCE(μF)/RATED VOLTAGE(V). VOLTAGES ARE DC-MEASURED WITH A DIGITAL VOLT METER WITHOUT INPUT SIGNAL. (*MARK: FOR C50/C60 J/C)

▲ Parts are safety assurance parts. When replacing those parts make sure to use the specified one.

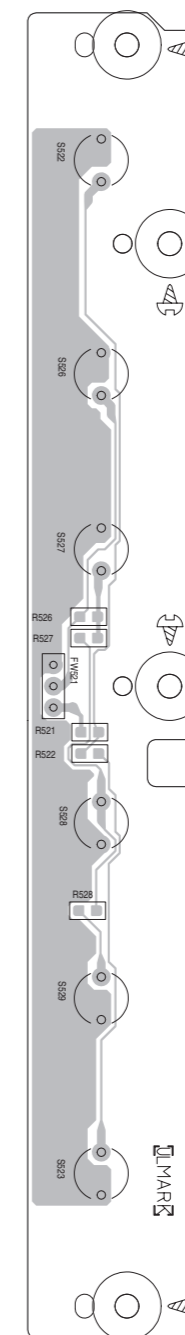
Printed circuit boards

■ Main board Lead free solder used in the board (material : Sn-Ag-Cu, melting point : 219 Centigrade)

(Main board)

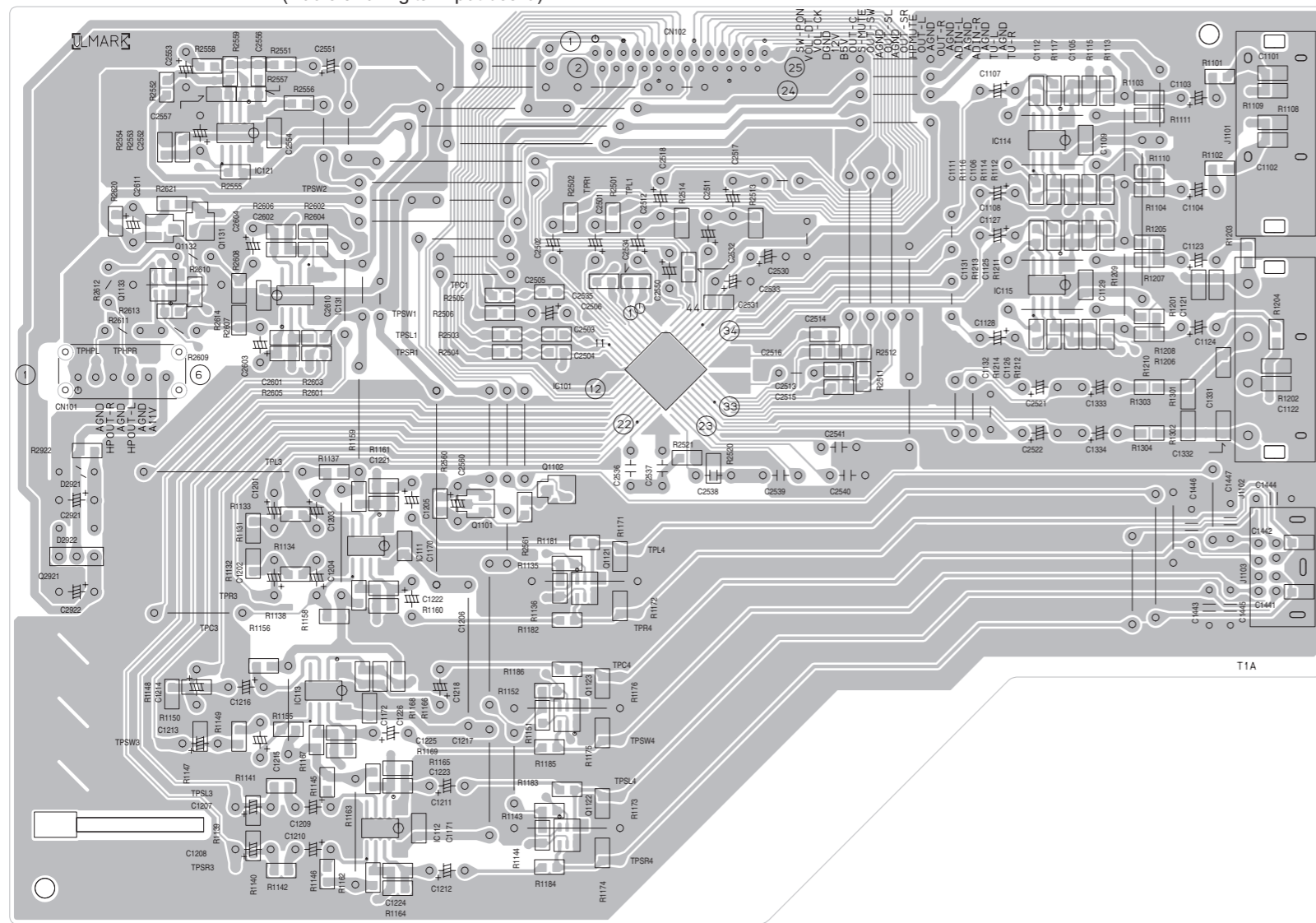


(Operation board)

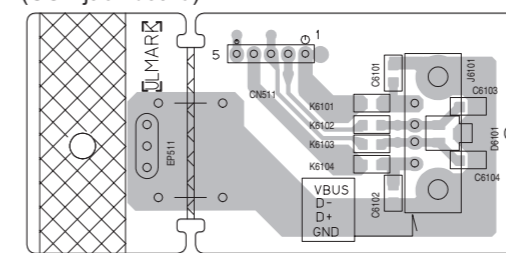


■ Audio board Lead free solder used in the board (material : Sn-Ag-Cu, melting point : 219 Centigrade)

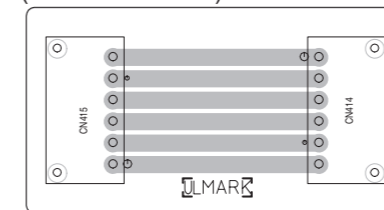
(Audio and Digital input board)



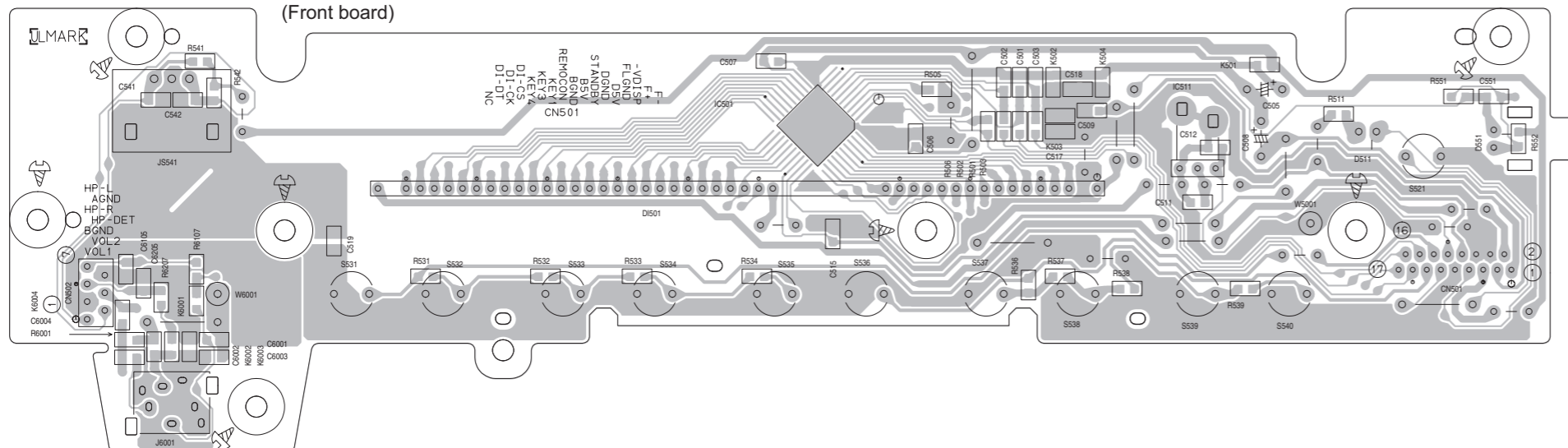
(USB jack board)



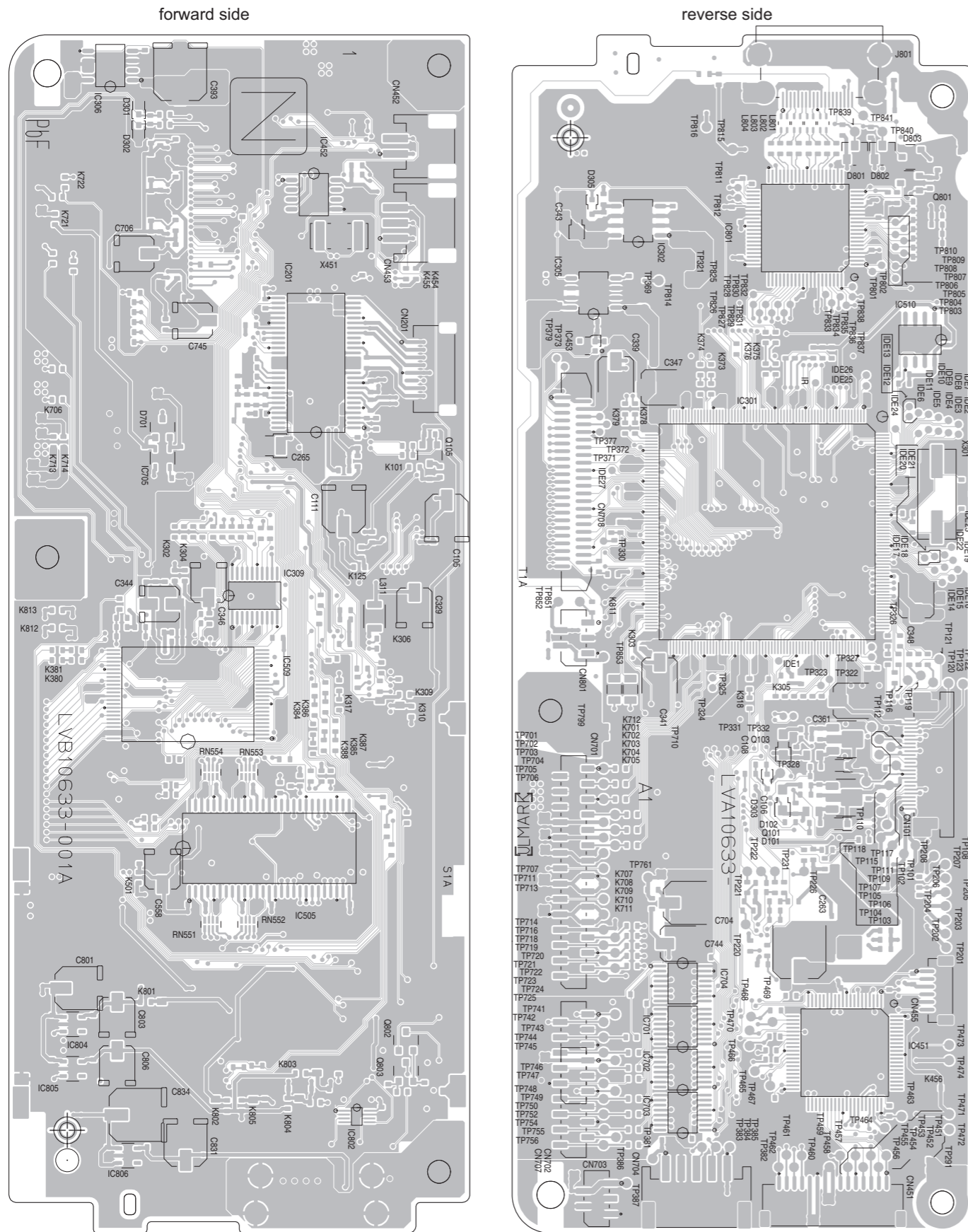
(Connection board)



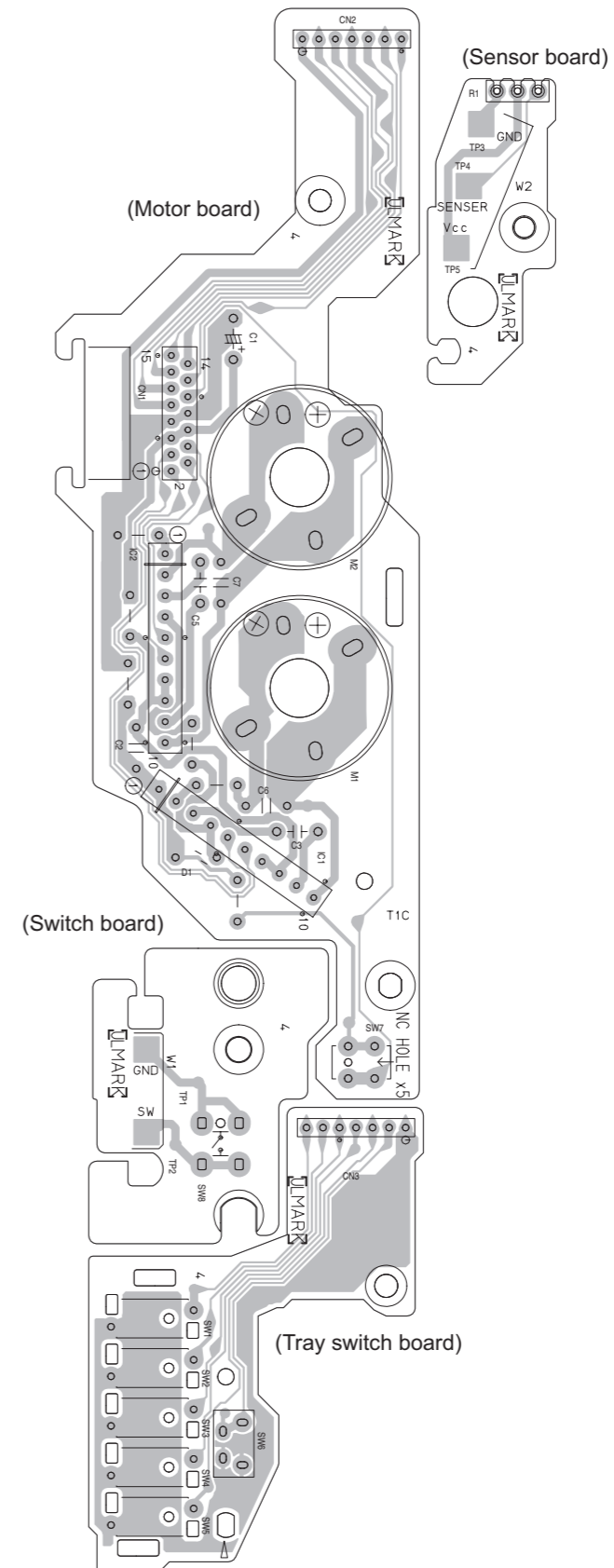
(Front board)



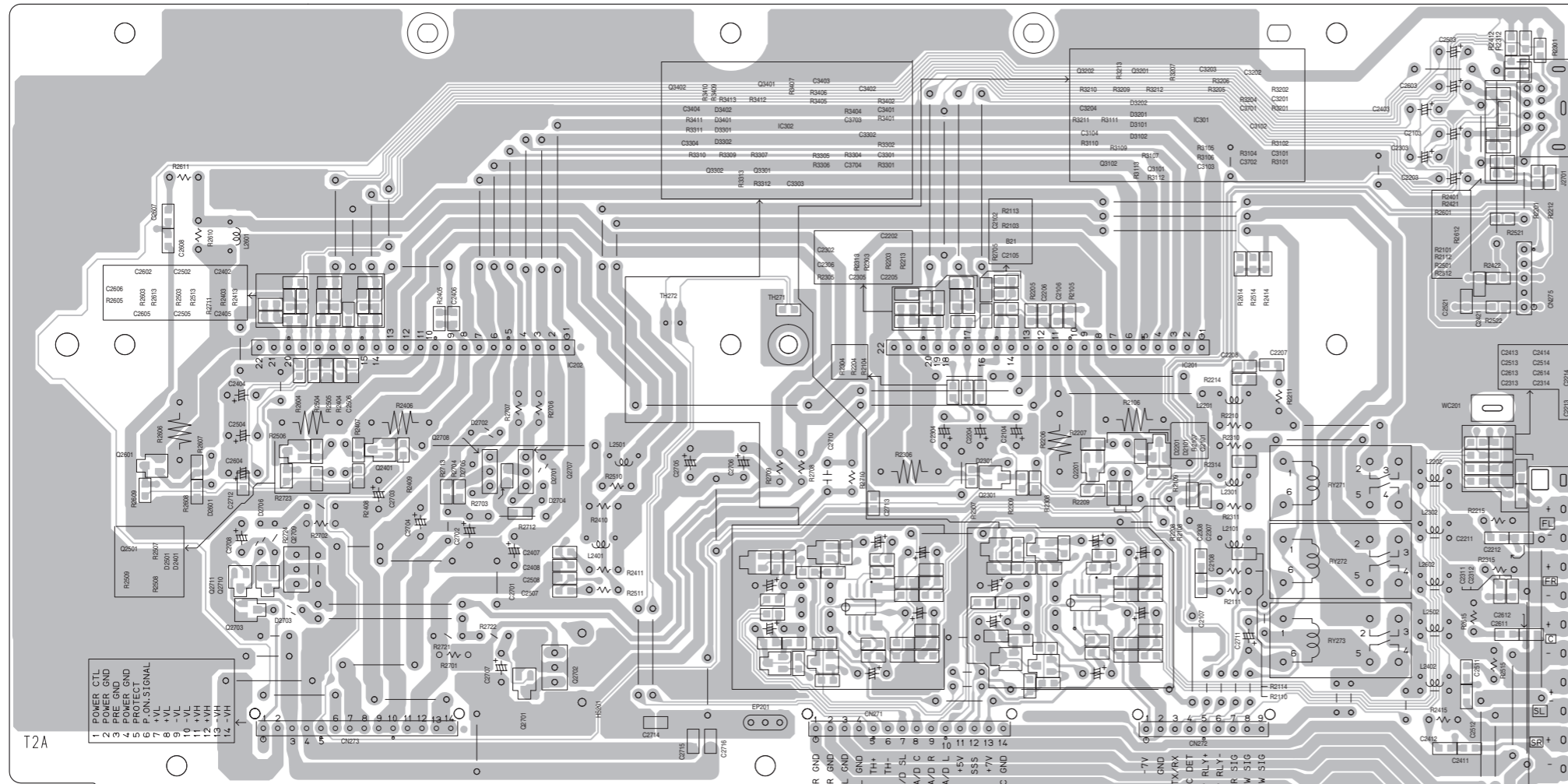
■ DVD servo board Lead free solder used in the board (material : Sn-Ag-Cu, melting point : 219 Centigrade)



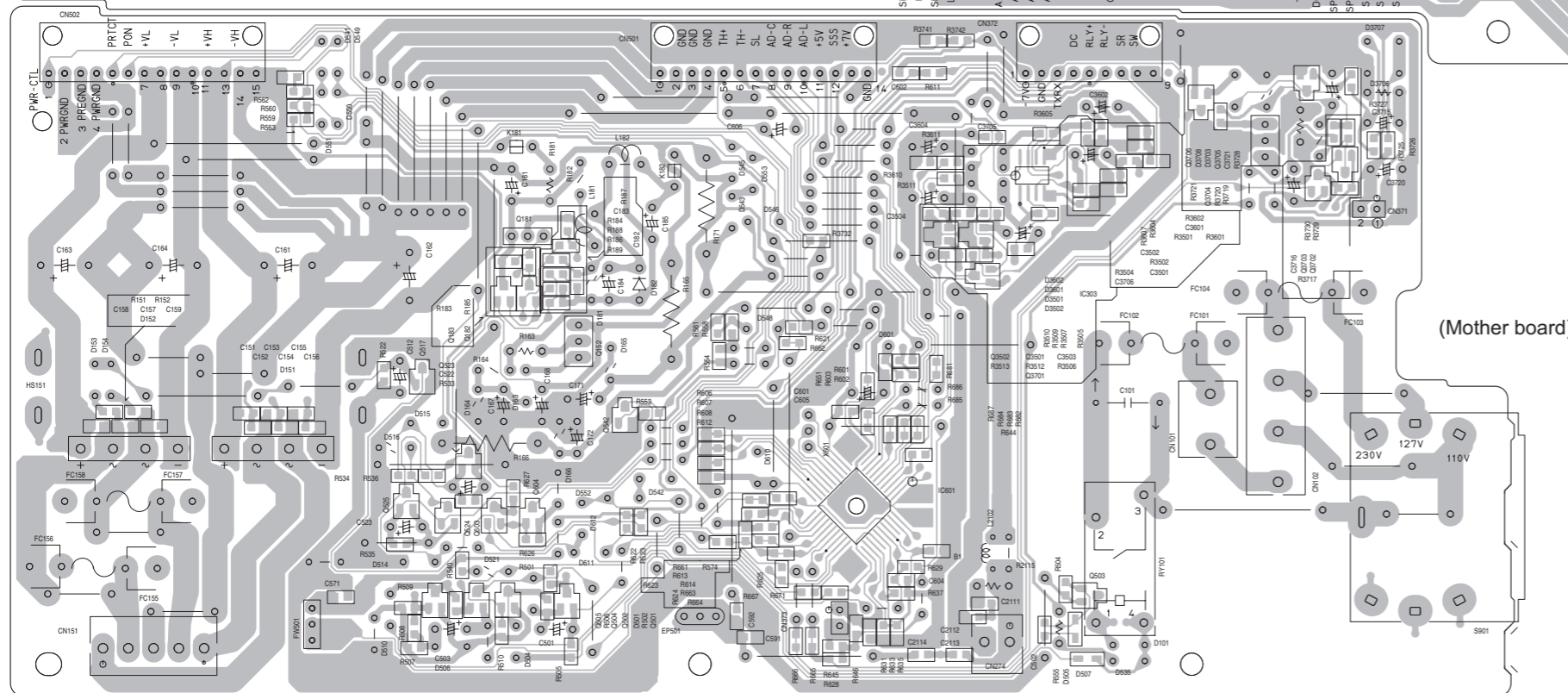
■ Loading board Lead free solder used in the board (material : Sn-Ag-Cu, melting point : 219 Centigrade)



■ Sub woofer board Lead free solder used in the board (material : Sn-Ag-Cu, melting point : 219 Centigrade)

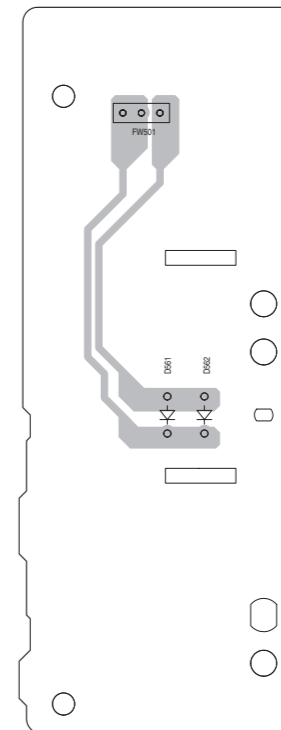


(Amp board)



(Mother board)

(LED board)



< MEMO >

JVC

Victor Company of Japan, Limited

Audio/Video Systems Category 10-1,1chome,Ohwatari-machi,Maebashi-city,371-8543,Japan

(No.MB511SCH)



Printed in Japan
VPT