

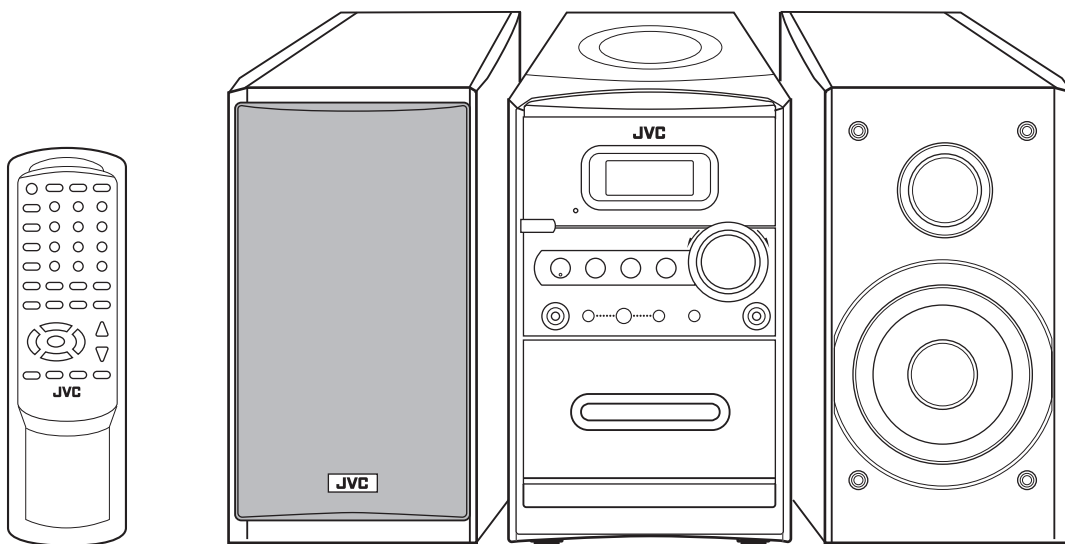
# JVC

## SCHEMATIC DIAGRAMS

### MICRO COMPONENT SYSTEM

# UX-HB4

CD-ROM No.SML200410



SP-UXHB4

CA-UXHB4

SP-UXHB4

**MP3**  
PLAYBACK

**DAB**  
Digital Audio Broadcasting

**CORDS**

Area suffix

B ..... U.K.

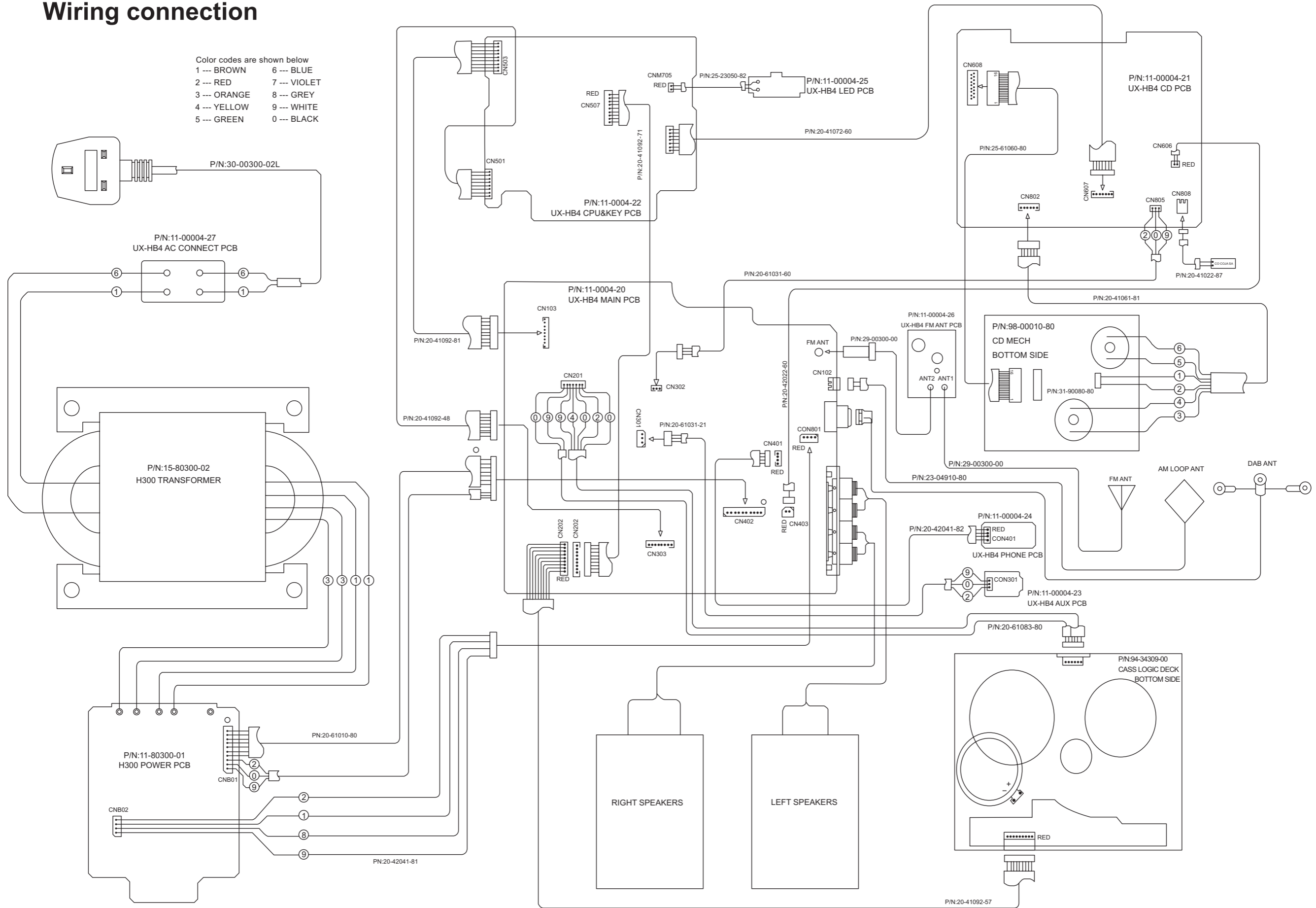
### Contents

Wiring connection	2-1
Block diagram .....	2-2
Standard schematic diagrams .....	2-3
Printed circuit boards .....	2-7 to 9

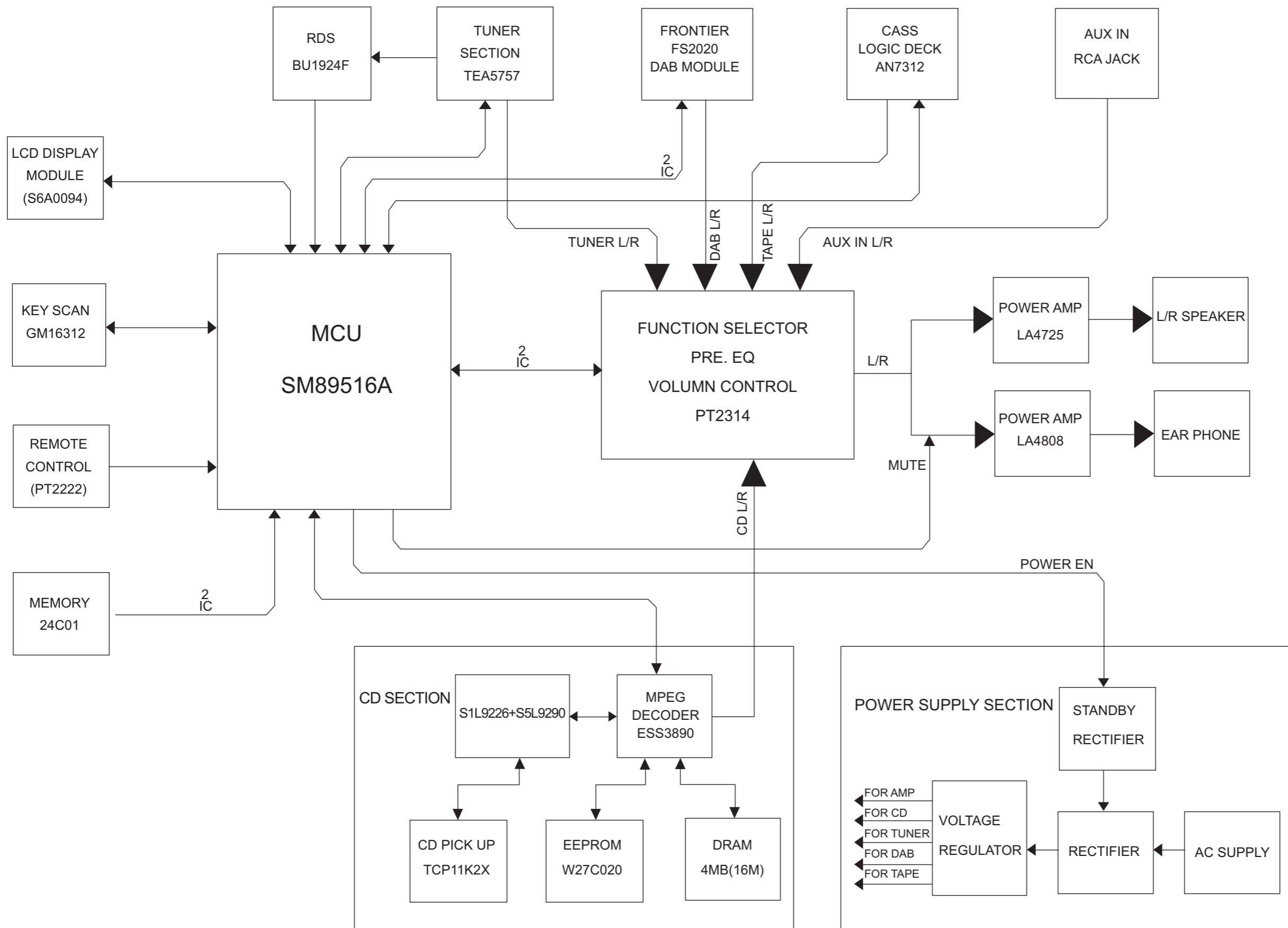
In regard with component parts appearing on the silk-screen printed side (parts side) of the PWB diagrams, the parts that are printed over with black such as the resistor (■), diode (▣) and ICP (●) or identified by the "⚠" mark nearby are critical for safety.

# Wiring connection

Color codes are shown below  
 1 --- BROWN    6 --- BLUE  
 2 --- RED        7 --- VIOLET  
 3 --- ORANGE    8 --- GREY  
 4 --- YELLOW    9 --- WHITE  
 5 --- GREEN     0 --- BLACK

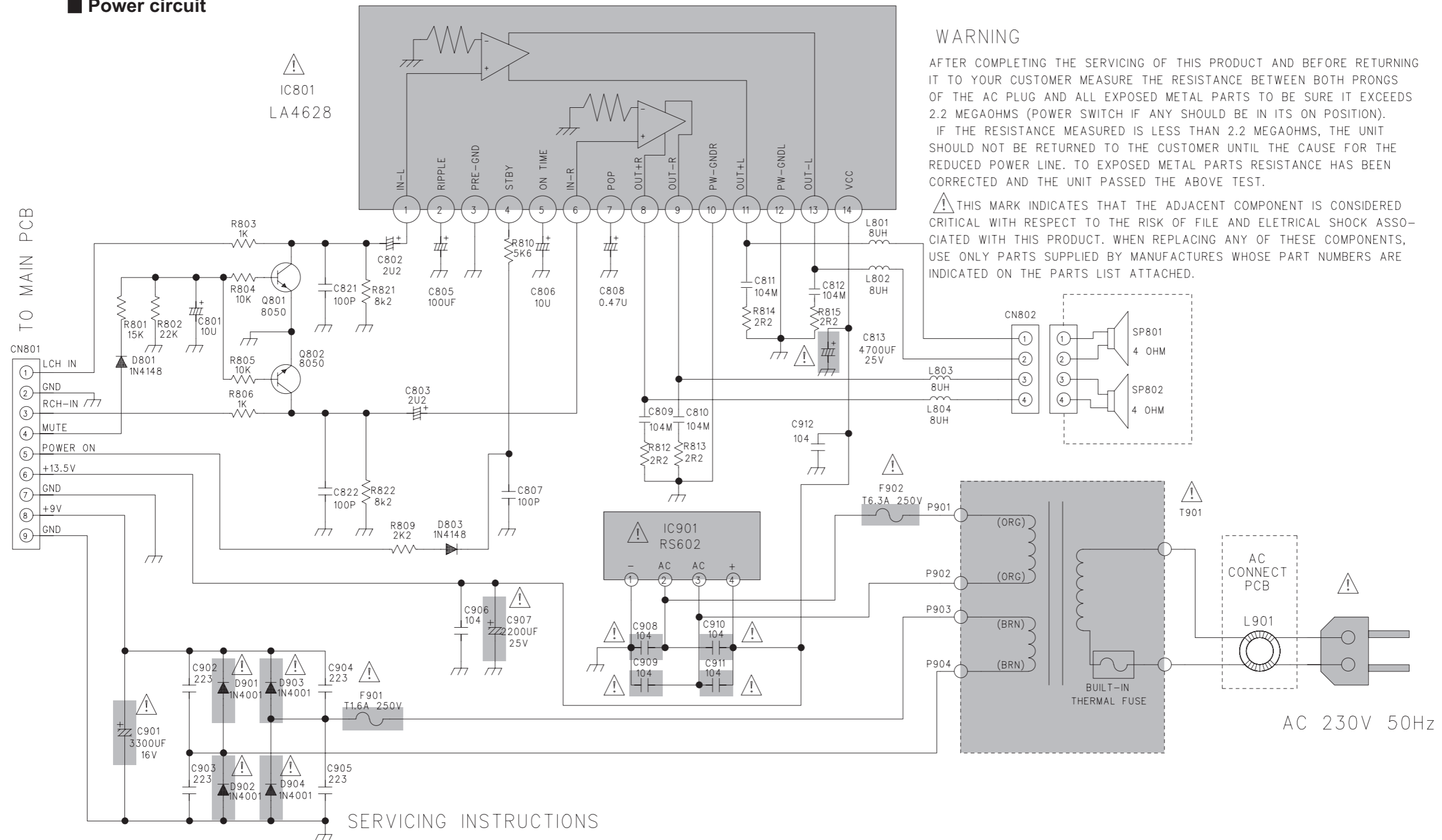


# Block diagram





# Standard schematic diagrams

## Power circuit



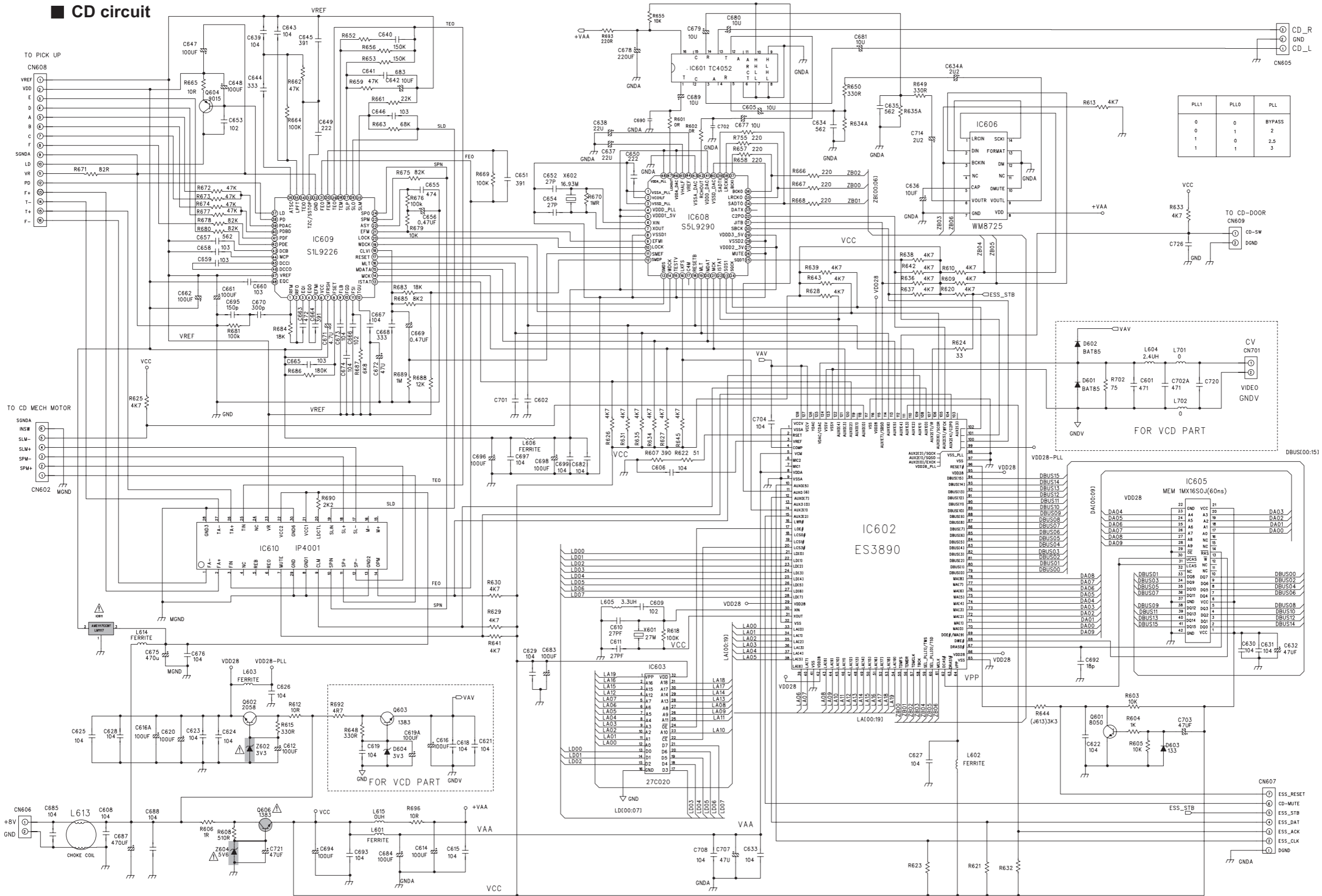
### SERVICING INSTRUCTIONS

1. DISCONNECT POWER CORD BEFORE SERVICING.
2. REPLACE CRITICAL COMPONENTS  ONLY WITH FACTORY PARTS OR RECOMMENDED EQUIVALENTS.
3. FOR AC LINE POWERED UNITS – BEFORE RETURNING REPAIRED UNIT TO USER, USE AN OHMMETER TO MEASURE FROM BOTH AC PLUG BLADES TO ALL EXPOSED METALLIC PARTS. THE RESISTANCE SHOULD BE MORE THAN 100,000 OHMS.

 Parts are safety assurance parts. When replacing those parts make sure to use the specified one.



# CD circuit

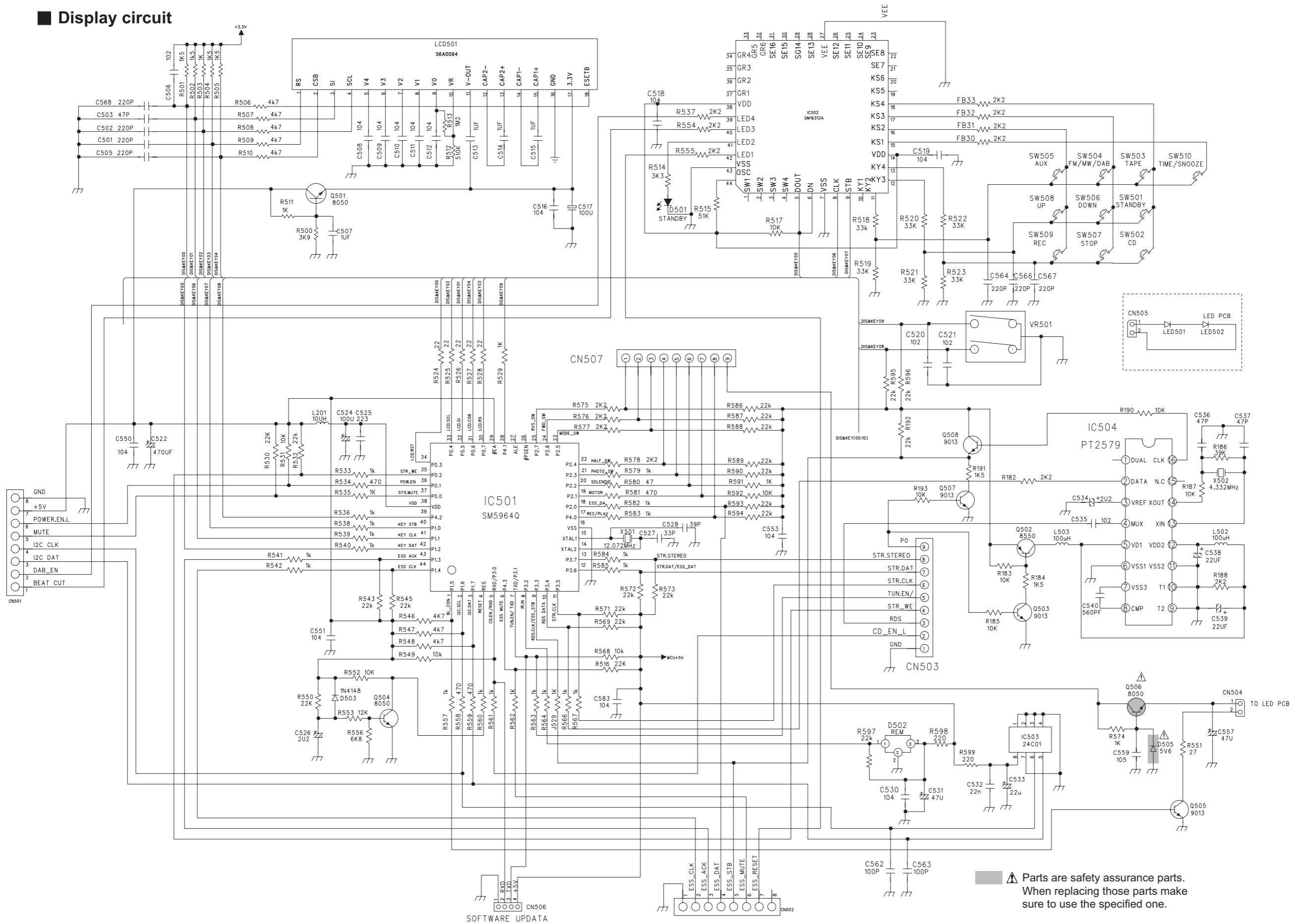


PLL1	PLL0	PLL
0	0	BYPASS
0	1	2
1	0	2.5
1	1	3

- AUX00 ← LIMIT
- AUX02 ← FOK(ISTAT1)
- AUX03 ← MCK
- AUX04 ← ISTAT(ISTAT2)
- AUX10 ← CLOSE
- AUX11 ← OPEN
- AUX12 ← XRST
- AUX15 ← MDAT
- AUX16 ← MLT
- AUX17 ← SBDT
- AUX20 ← SBCK
- AUX21 ← SODT
- AUX22 ← SOCK
- AUX24 ← MUTE
- AUX25 ← WFK(C2P0)
- AUX26 ← SOS1
- AUX30 ← CL/OP/SW
- AUX31 ← LKFS

Parts are safety assurance parts. When replacing those parts make sure to use the specified one.

# Display circuit



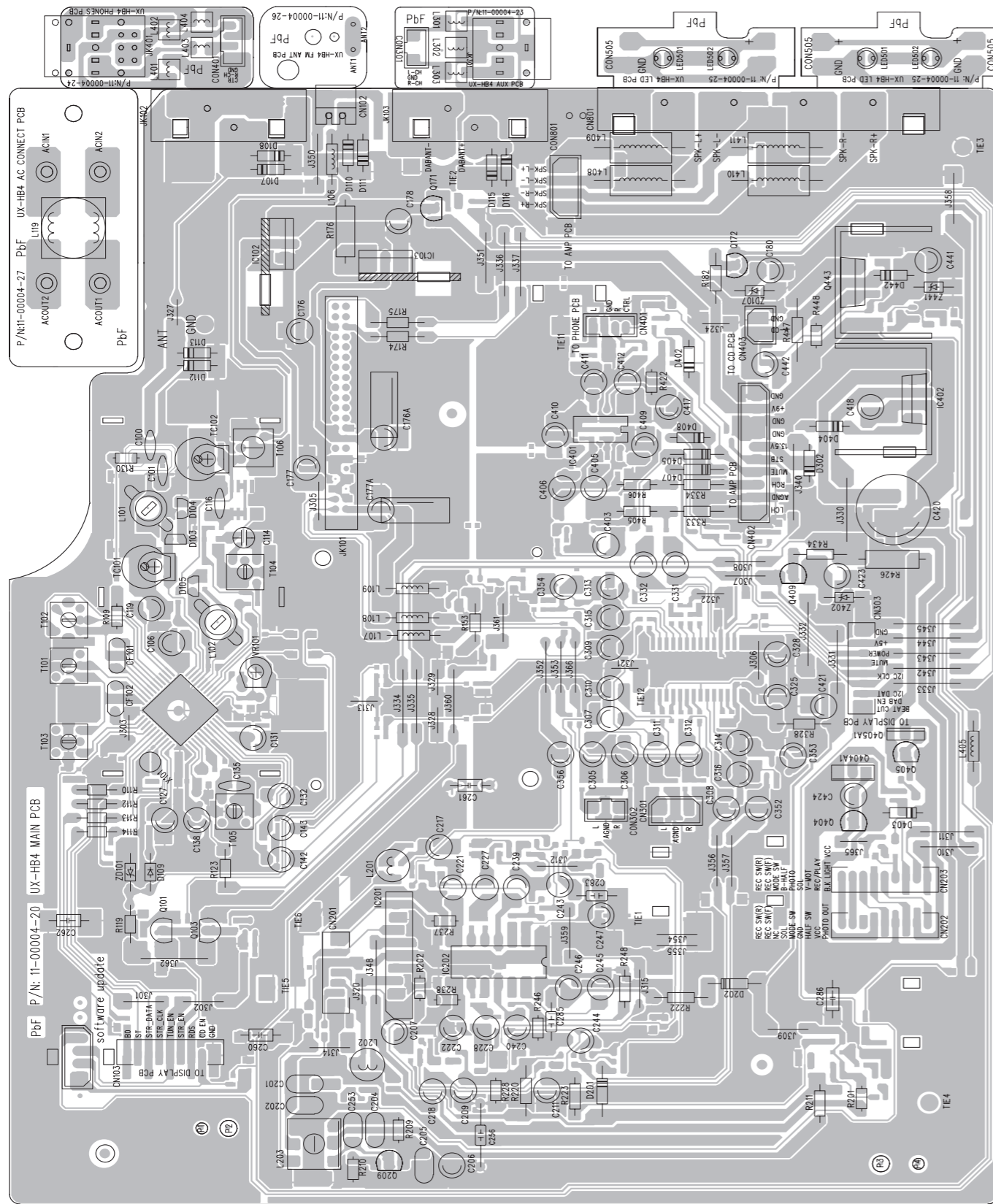
**⚠ Parts are safety assurance parts.**  
When replacing those parts make sure to use the specified one.



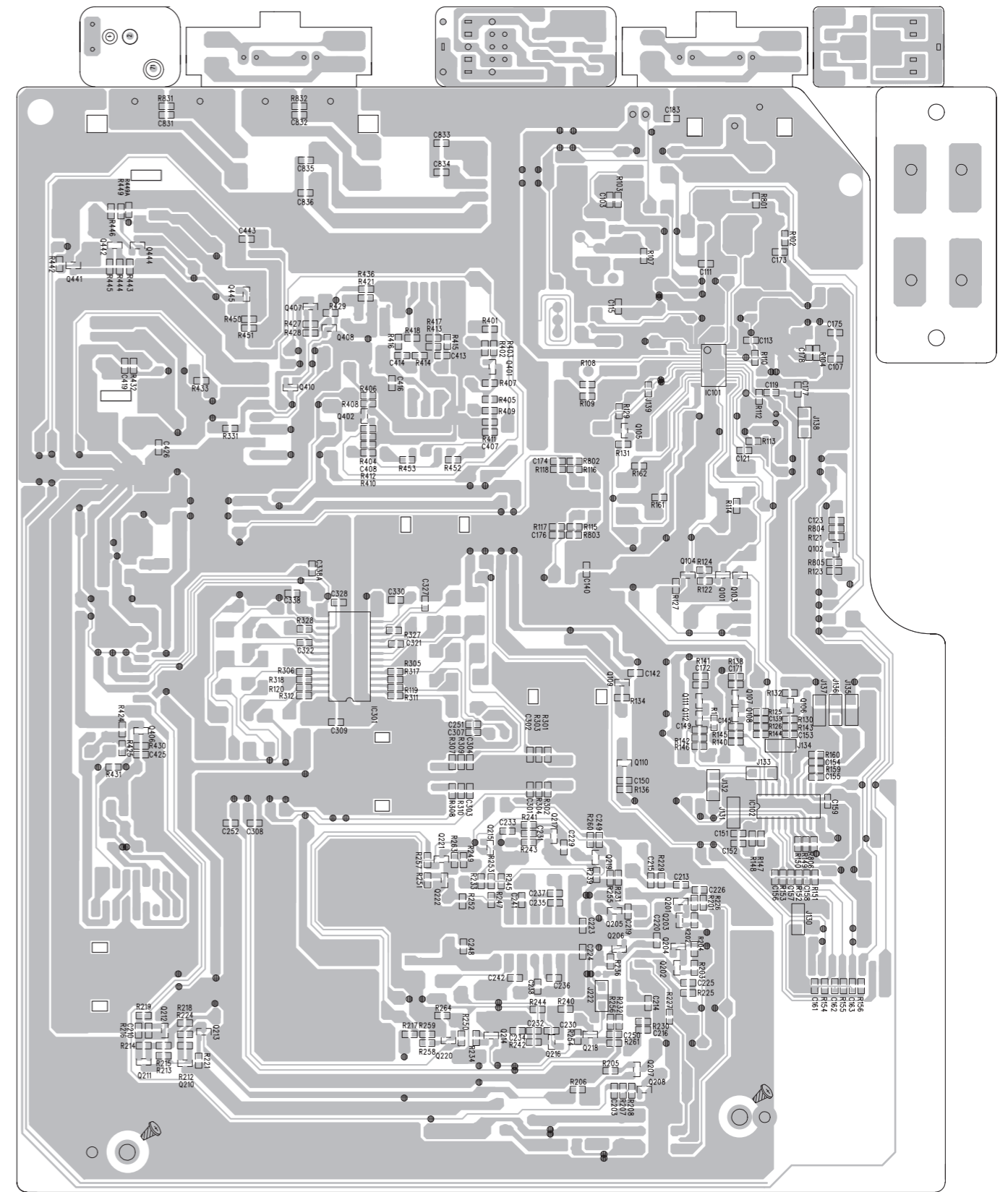
# Printed circuit boards

## ■ Main board

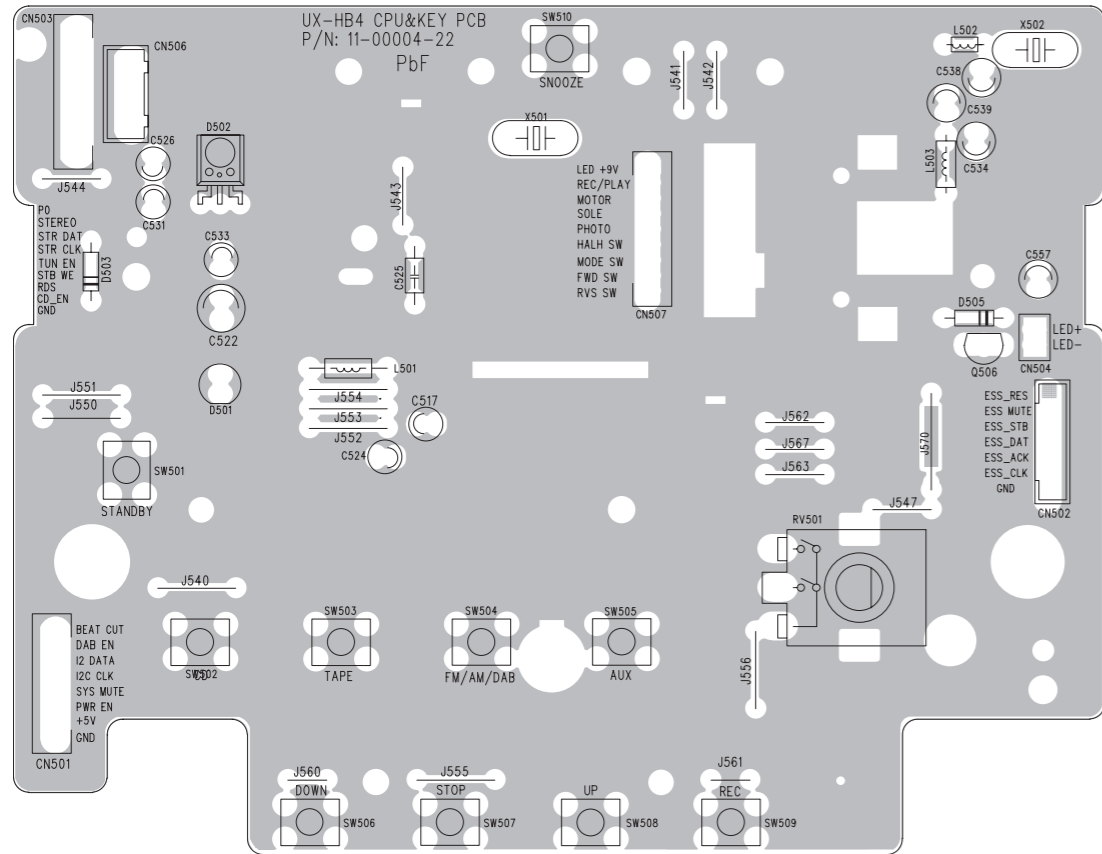
(forward side)



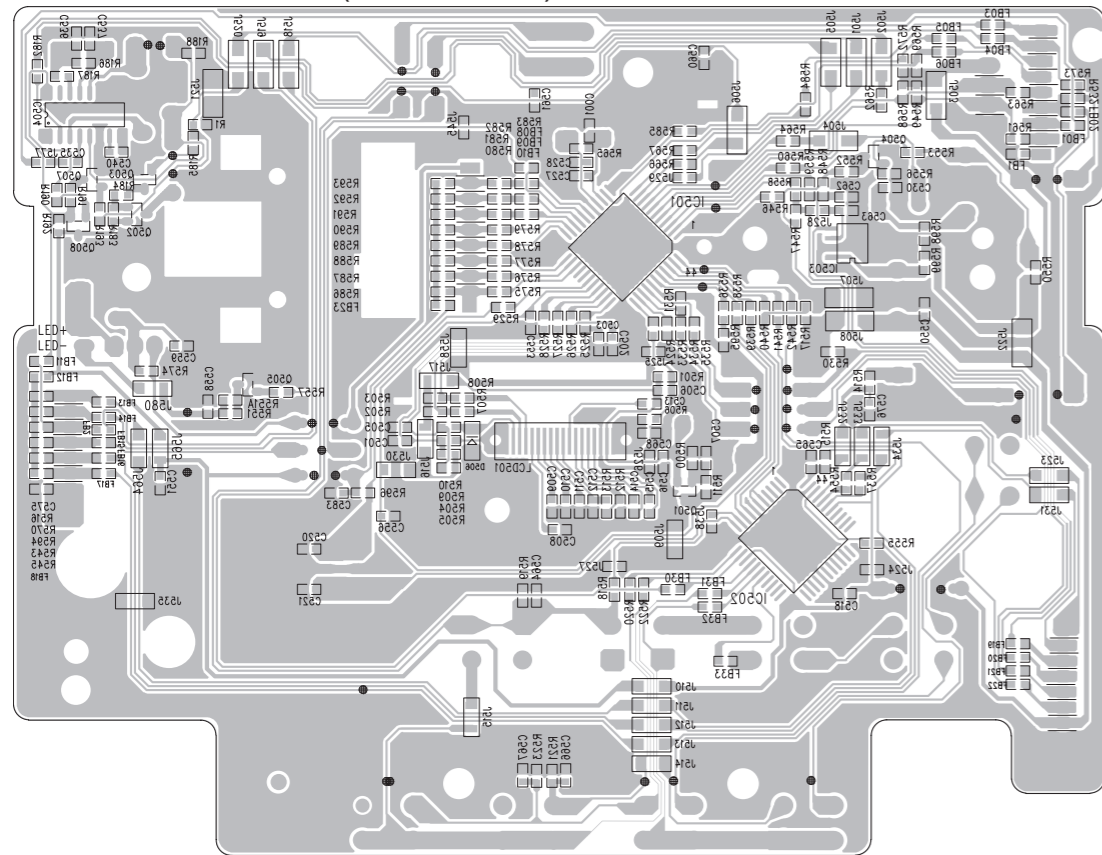
(reverse side)



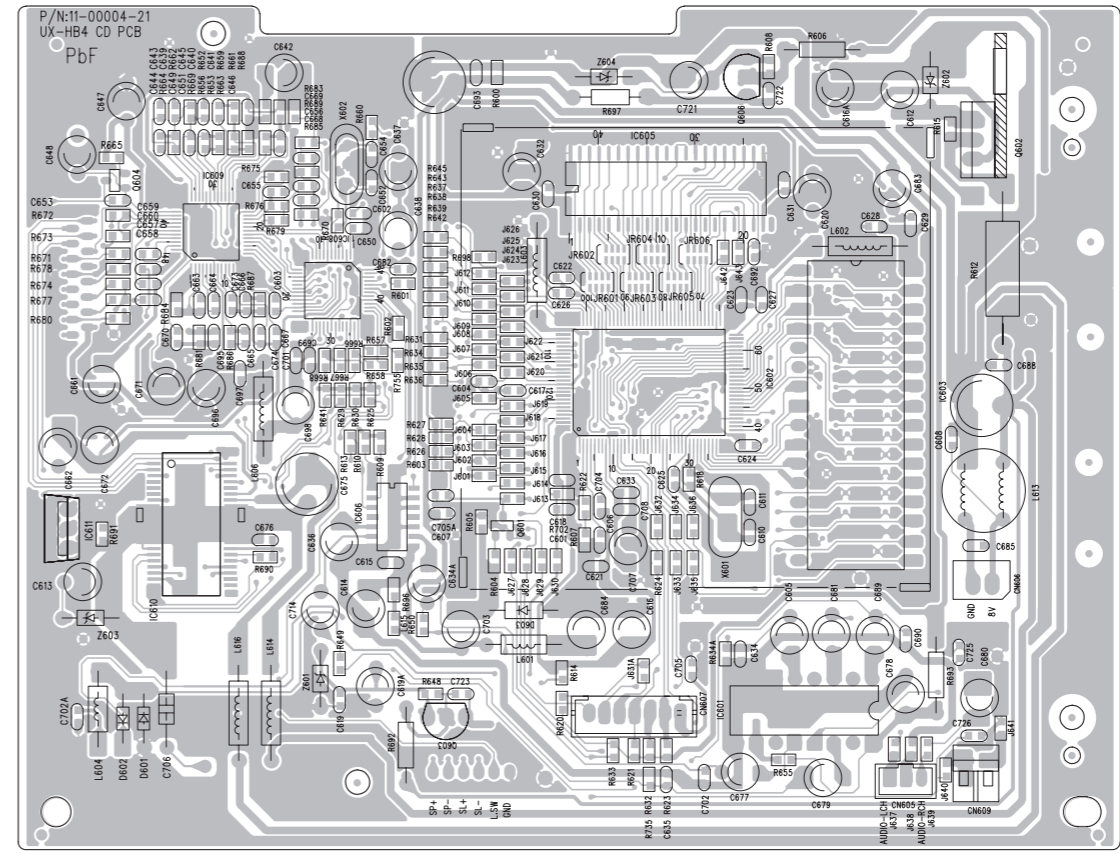
■ Display board (forward side)



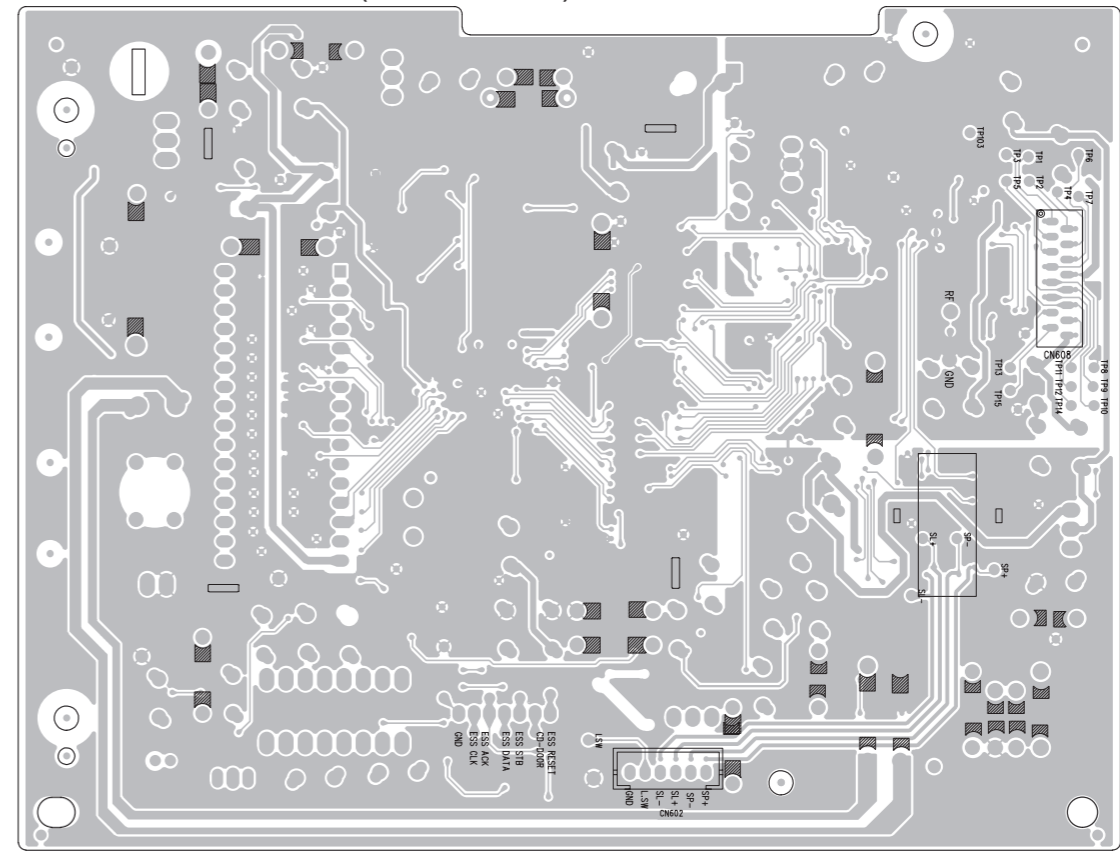
(reverse side)



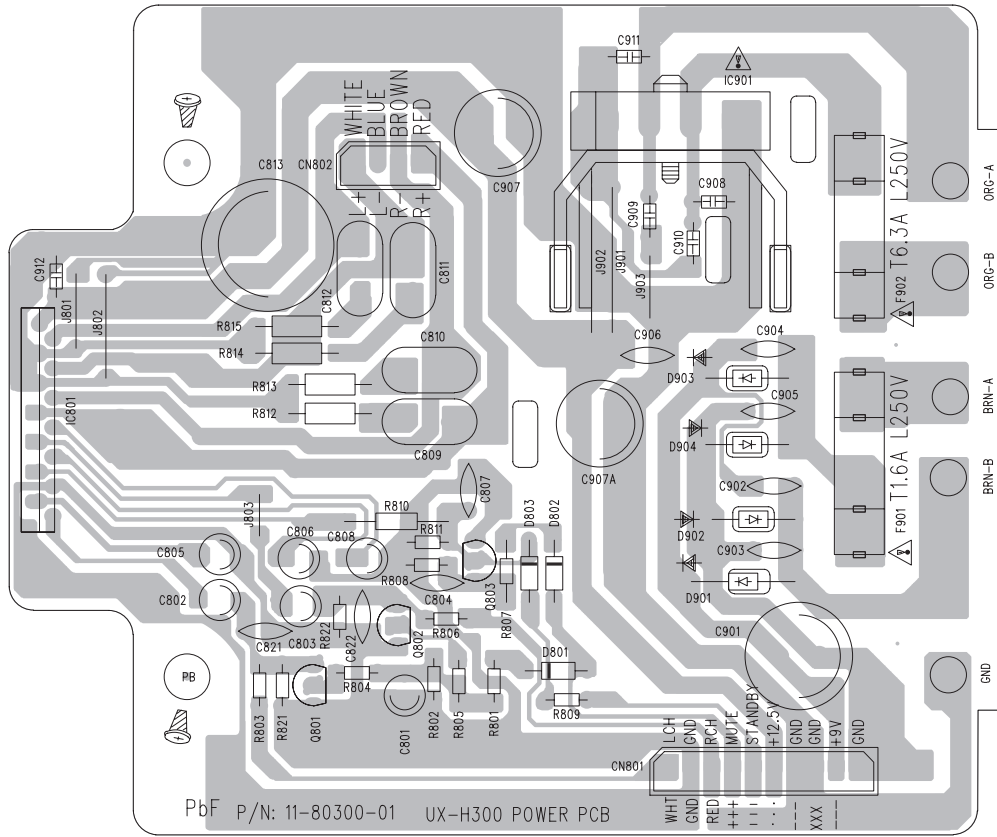
■ CD board (forward side)



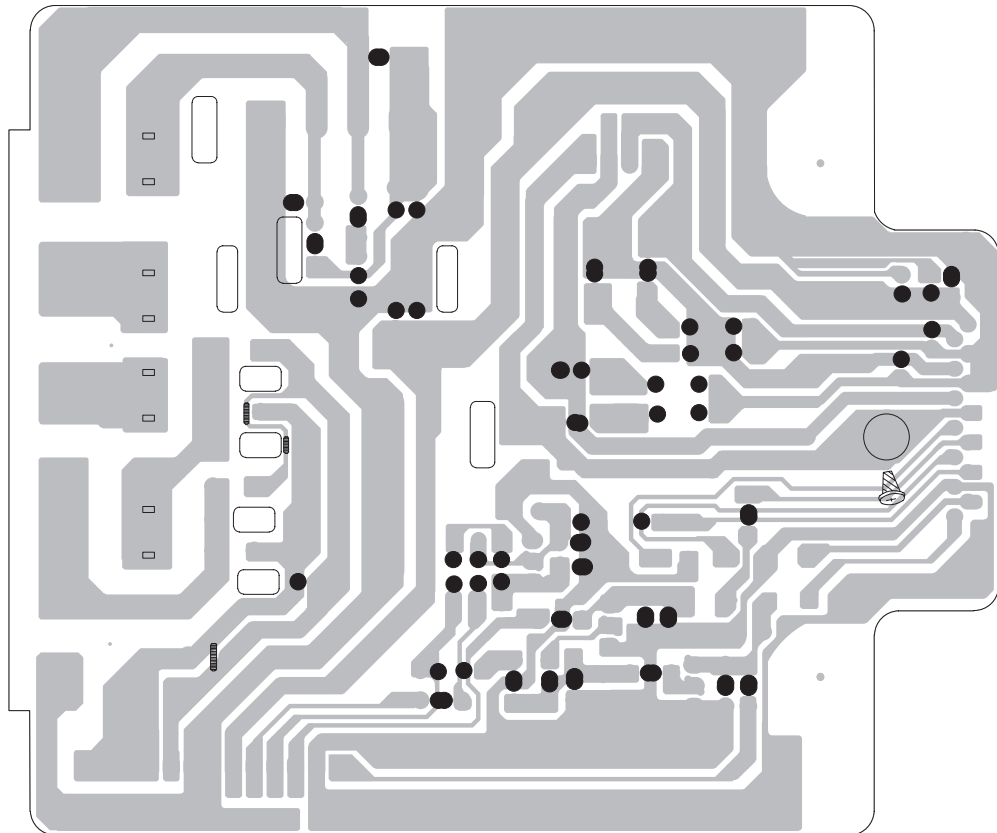
(reverse side)



■ Power board ( forward side )



( reverse side )



**JVC**

Victor Company of Japan, Limited

AV & MULTIMEDIA COMPANY AUDIO/VIDEO SYSTEMS CATEGORY 10-1,1chome,Ohwatari-machi,Maebashi-city,371-8543,Japan

(No.MB330SCH)



Printed in Japan  
WPC