

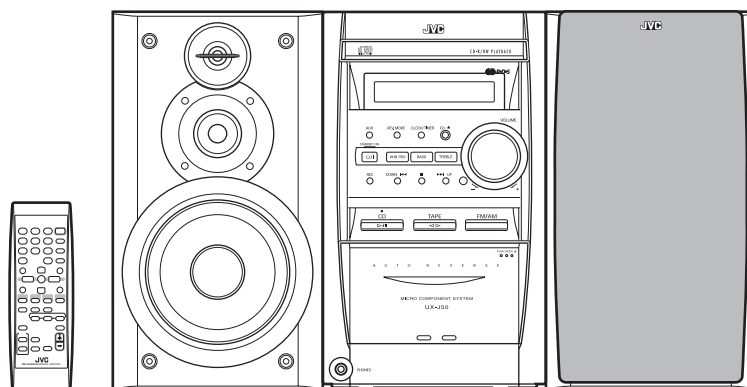
JVC

SCHEMATIC DIAGRAMS

MICRO COMPONENT SYSTEM

UX-J50

CD-ROM No.SML200303



SP-UXJ50

CA-UXJ50

SP-UXJ50



Area Suffix

B ----- U.K.
 E ----- Continental Europe
 EN ----- Northern Europe

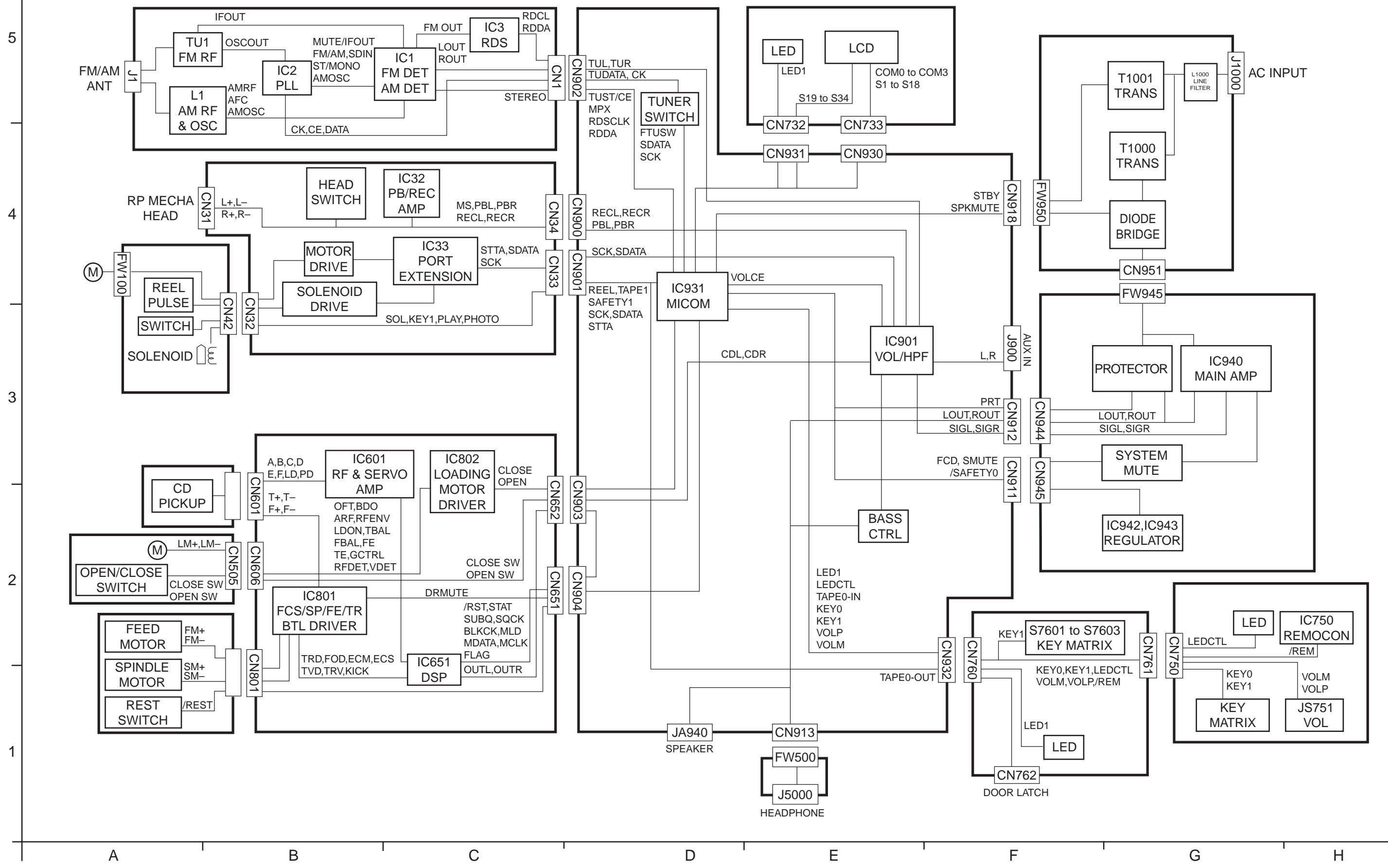
Contents

Block diagram ----- 2-1
 Standard schematic diagrams ----- 2-2
 Printed circuit boards ----- 2-9~11

In regard with component parts appearing on the silk-screen printed side (parts side) of the PWB diagrams, the parts that are printed over with black such as the resistor (■), diode (▣) and ICP (●) or identified by the "⚠" mark nearby are critical for safety.

(This regulation does not correspond to J and C version.)

Block diagram



Standard schematic diagrams

Primary section

EXPLANATION OF OVERALL OF SCHEMATIC

MODEL : FS-J50/UX-J50

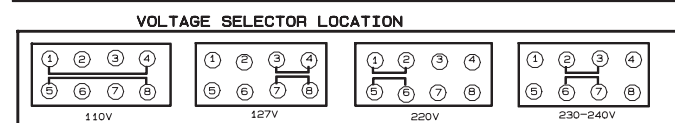
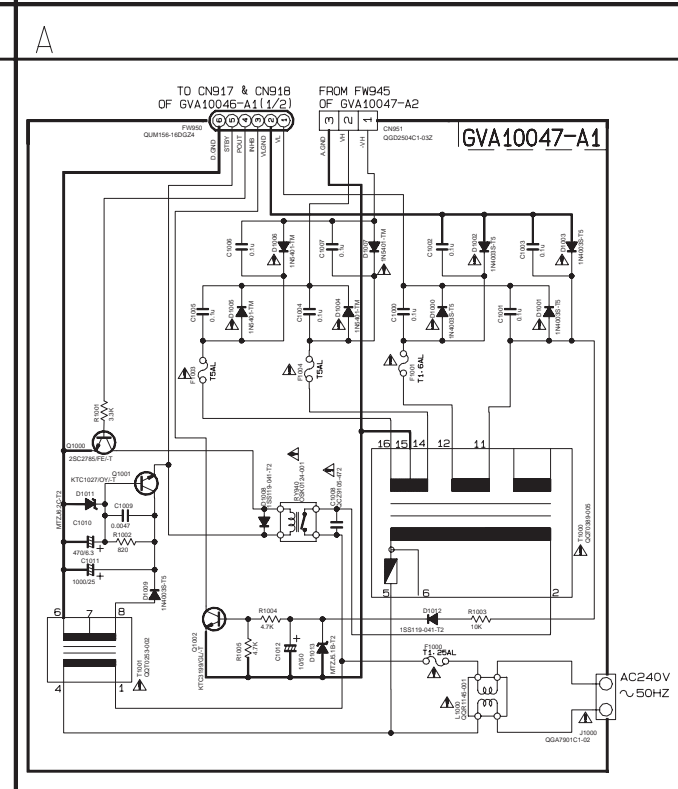
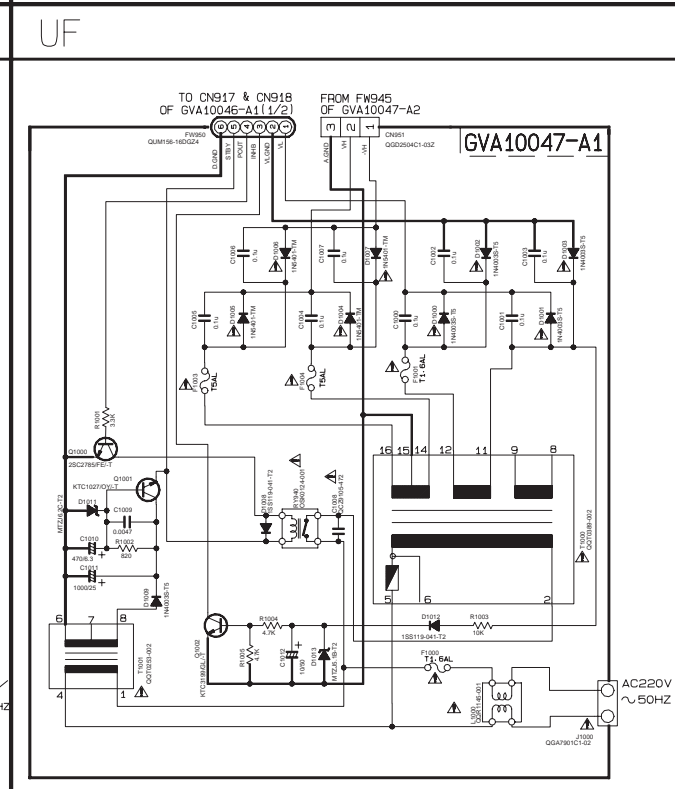
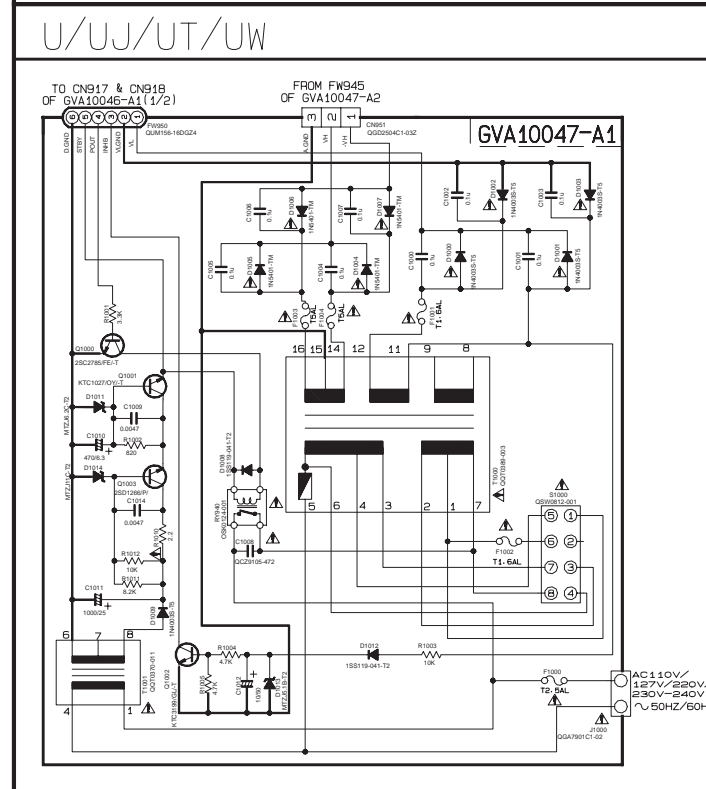
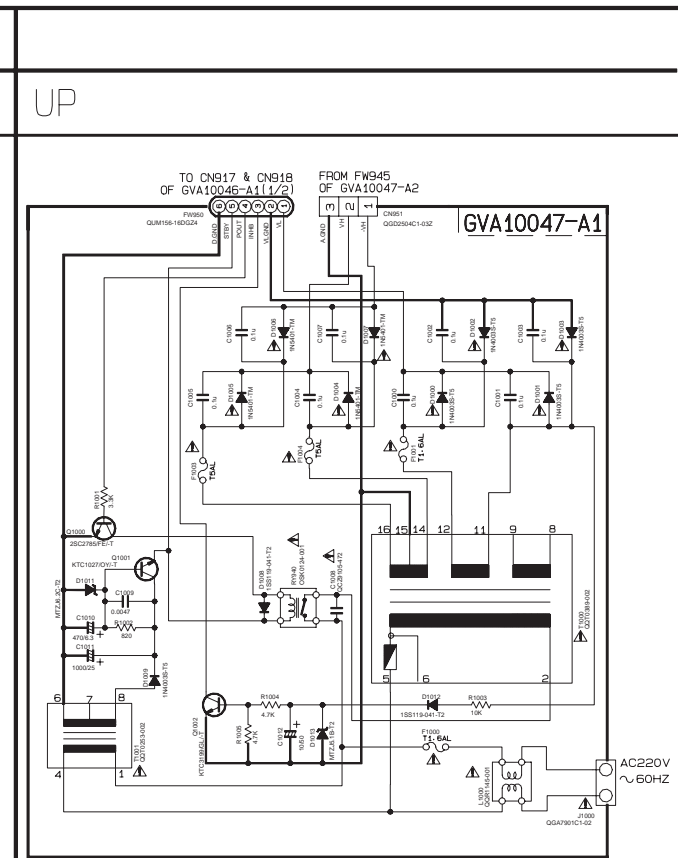
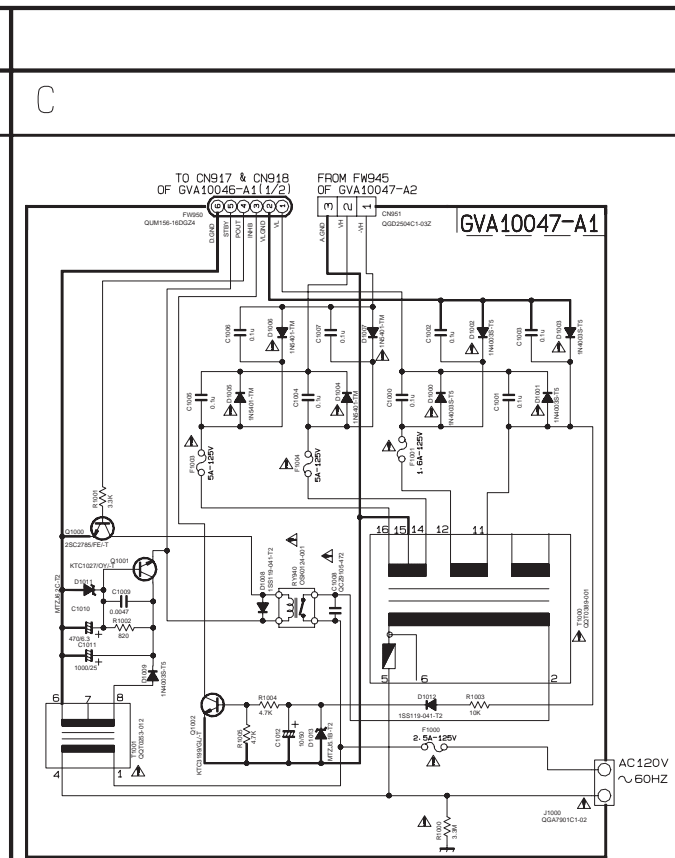
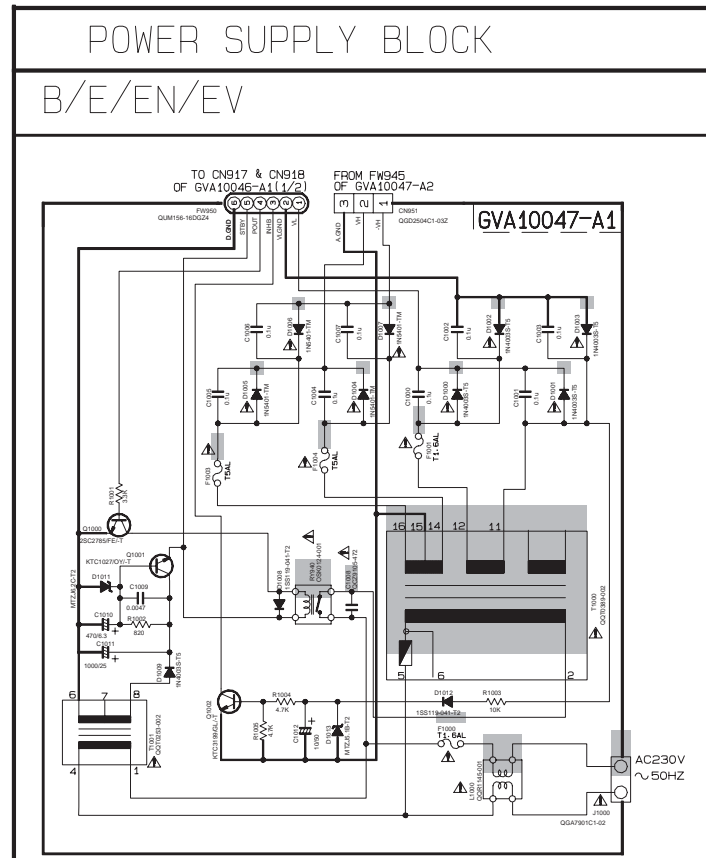
SHEET NUMBER	MODEL NUMBERS TO BE APPLIED	CIRCUITS DESCRIPTION
1/B	FS-J50/UX-J50	PRIMARY WITH MAINS TRANSFORMER
2/B	FS-J50/UX-J50	AUDIO OUTPUT EXTERNAL INPUT
3/B	FS-J50/UX-J50	LCD DISPLAY/SYSTEM CONTROL/USERS KEY CONTROL SOURCE SELECTOR SWITCH
4/B	FS-J50/UX-J50	CD SERVO AND CD SYSTEM CONTROL
5/B	FS-J50/UX-J50	TAPE DECK MECHANISM CONTROL TAPE CIRCUITS SUCH AS PRE-AMP AND BIAS
6/B	FS-J50/UX-J50	TUNER RF/IF/FM MULTIFLEX (ONLY FOR C/U/UJ/UF/UT/UW)
7/B	UX-J50	TUNER RF/IF/FM MULTIFLEX (ONLY FOR A/B/E/EV/EN)
8/B	FS-J50/UX-J50	POWER BOARD MULTIREGULATOR

* NOTE : MARK () IS TO SHOW DEVIATION IN VERSIONS. DETAILS ARE EXPLAINED NEAR MARK.

VERSION CODES

- C : CANADA
- A : AUSTRALIA
- B : U.K
- E : CONTINENTAL EUROPE
- EN : NORDIC COUNTRIES
- EV : EASTERN EUROPE & RUSSIA
- U : GENERAL COUNTRY
- UF : CHINA
- UW : SOUTH AMERICA
- UP : KOREA
- UT : TAIWAN
- UJ : MILITARY

▲ Parts are safety assurance parts. When replacing those parts make sure to use the specified one.



5

4

3

2

1

A

B

C

2-2

D

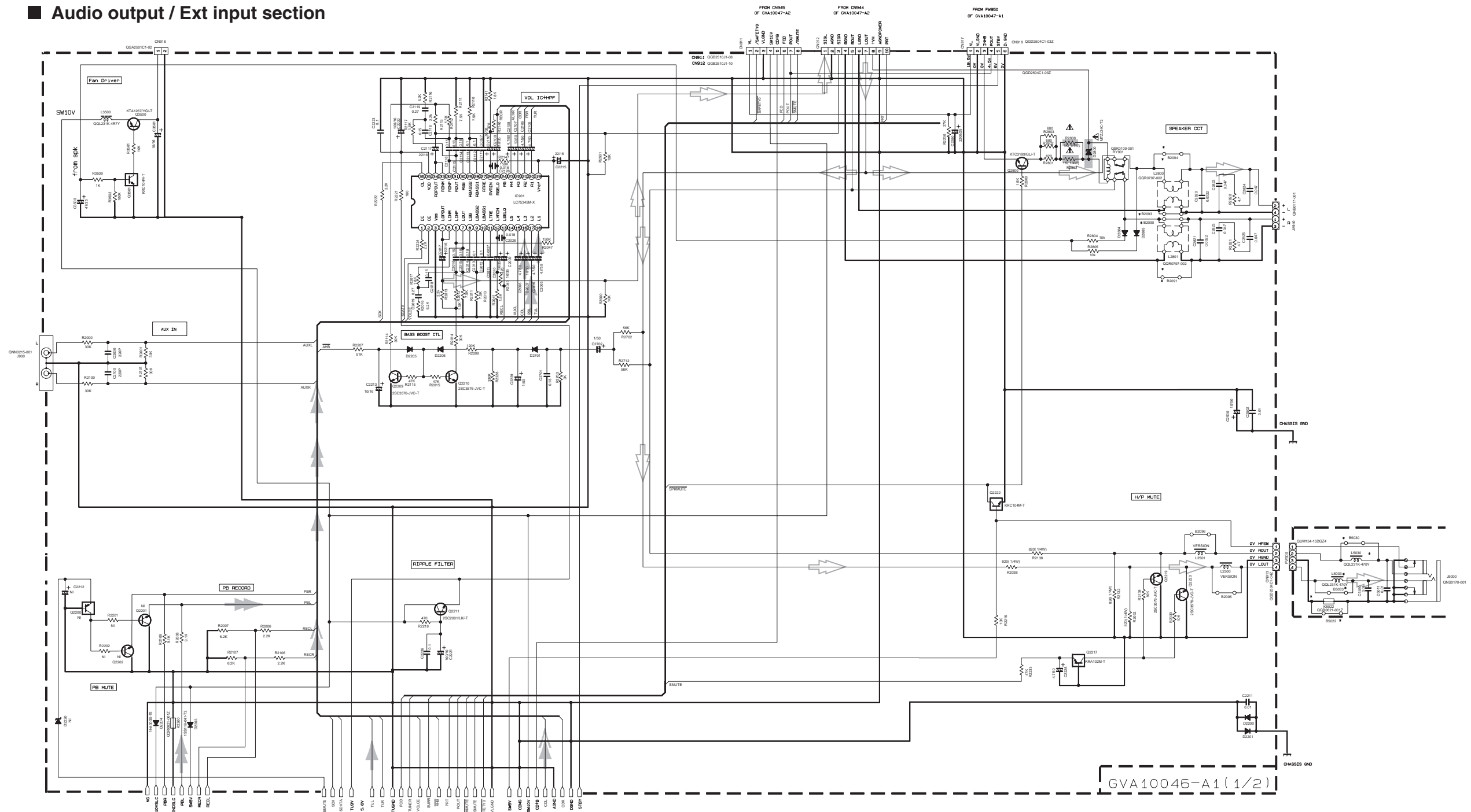
E

F

G

H

■ Audio output / Ext input section



TO GVA10046-A1(2/2) TO GVA10046-A1(2/2)

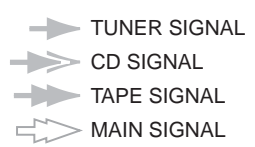
1. ALL VALUES ARE MEASURED IN VOLTS --- CD STOP MODE.

IC	1	2	3	4	5	6	7	8	9	10	11	12	13	14	15	16	17	18	19	20	21	22	23	24	25	26	27	28	29	30	31	32	33	34	35	36
IC901	5.2	0.4	0	3.7	3.7	3.7	3.7	3.7	3.7	3.7	3.7	3.7	3.7	3.7	3.7	3.7	3.7	3.7	3.7	3.7	3.7	3.7	3.7	3.7	3.7	3.7	3.7	3.7	3.7	3.7	3.7	3.7	3.7	3.7	7.4	0

2. UNLESS OTHERWISE SPECIFIED:
 ALL RESISTORS ARE 1/16W 45K METAL GLAZE RESISTOR.
 ALL CAPACITORS ARE CERAMIC CAPACITOR OR MYLAR CAPACITOR.
 ALL RESISTANCE VALUES ARE IN OHM(Ω).
 ALL CAPACITANCE VALUES ARE IN PF(PF).
 ALL INDUCTANCE VALUES ARE IN MH(MH).
 ALL E. CAPACITORS ARE SHOWN IN THE FORM OF CAPACITANCE(μF)/RATED VOLTAGE (V).
 ALL DIODES ARE 1S1519-041-T2 UNLESS SPECIFIED

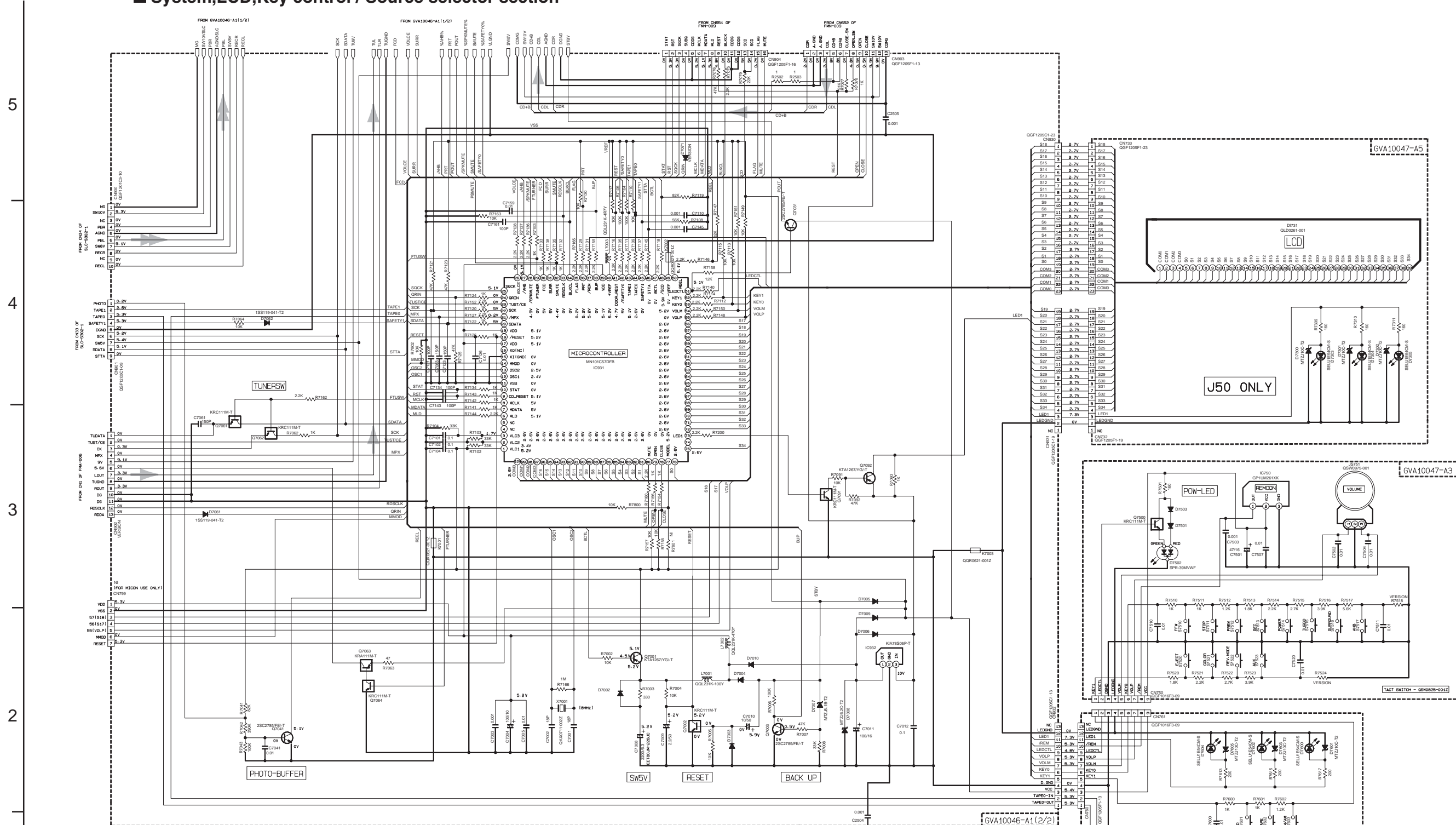
* PART LIST

VERSION	PART	L200/L201	B1000/B1003	L200/L201	B0091/B0092 B2000/B2004	K0002/L5030 L5033	B0002/B0030 B0033
A/B/E/EX/EN	G0L231K-80Y	NONE	NONE	G0P0797-002	NONE	USE	NONE
U/L/T/A/R/F/W	G0L231K-80Y	NONE	NONE	G0P0797-002	NONE	USE	NONE
C	NONE	G0Y150-00Y	NONE	G0Y150-00Y	NONE	NONE	G0Y150-00Y



⚠ Parts are safety assurance parts.
 When replacing those parts make sure to use the specified one.

System, LCD, Key control / Source selector section



NOTES
 1. VOLTAGES ARE DC-MEASURED WITH A DIGITAL VOLT METER OR OSCILLOSCOPE WITHOUT INPUT SIGNAL. CONDITION — CD STOP MODE
 2. UNLESS OTHERWISE SPECIFIED.
 ALL RESISTORS ARE 1/10W ±5% METAL GLAZE RESISTOR.
 ALL CAPACITORS ARE CERAMIC CAPACITOR OR MYLAR CAPACITOR.
 ALL RESISTANCE VALUES ARE IN Ω(M).
 ALL CAPACITANCE VALUES ARE IN p(F)(pF).
 ALL INDUCTANCE VALUES ARE IN μ(H)(μH).
 ALL E-CAPACITORS ARE SHOWN IN THE FORM OF CAPACITANCE(μF)/RATED VOLTAGE (V).
 ALL DIODES ARE 1SS119-041-T2 UNLESS SPECIFIED

* MARK

VERSION	C	U/UU/UT/UF/UP	UW	A	B/E/EV/EN
1TERR					
CN902		GGF1205F1-09			GGF1205F1-13
D7071		NONE			USE
B2090		USE			NONE
R7518	NONE	NONE		68K	27K
R7524	75K	33K	5.6K		NONE

PIN	VERSION	C	U/UU/UT/UF/UP	UW	A	B/E/EV/EN
KEY0		5.2V	5.2V	5.2V	4.7V	4.3V
KEY1		4.7V	4.3V	3.4V	5.2V	5.2V

➔ TUNER SIGNAL
 ➔ CD SIGNAL
 ➔ TAPE SIGNAL

5

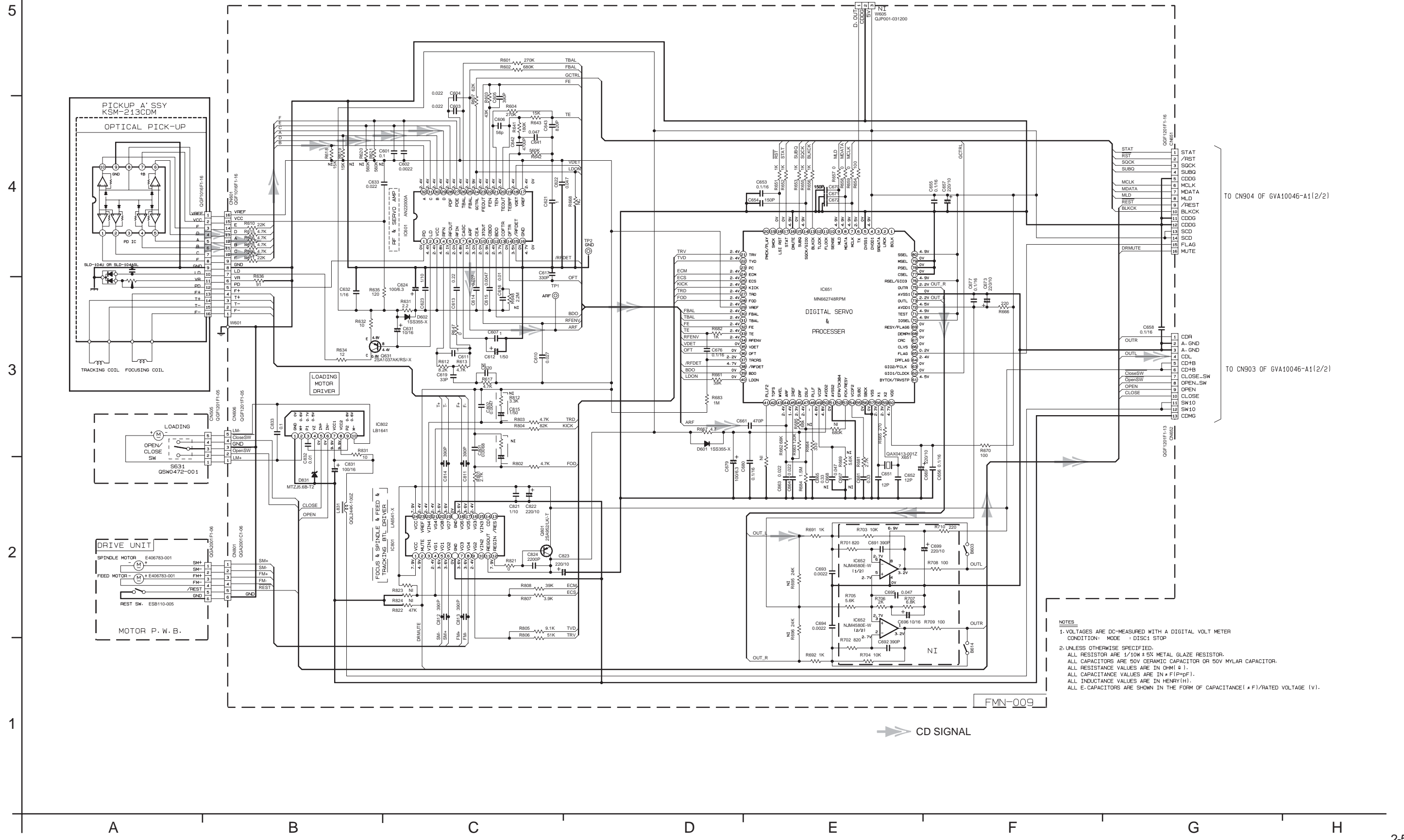
4

3

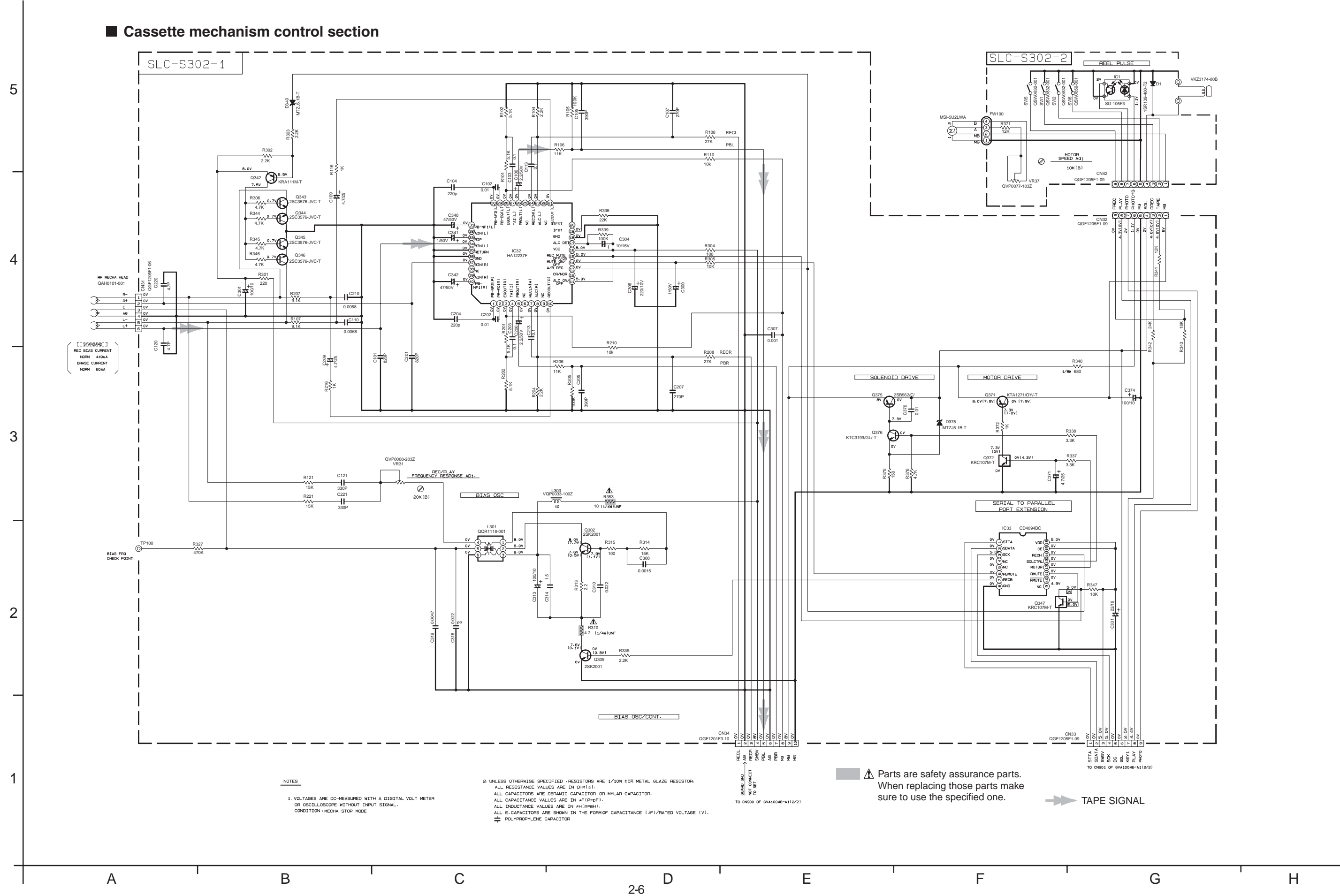
2

1

CD servo control section



Cassette mechanism control section



NOTES

1. VOLTAGES ARE DC-MEASURED WITH A DIGITAL VOLT METER OR OSCILLOSCOPE WITHOUT INPUT SIGNAL. CONDITION: MECHA STOP MODE

2. UNLESS OTHERWISE SPECIFIED - RESISTORS ARE 1/10W ±5% METAL GLAZE RESISTOR. ALL RESISTANCE VALUES ARE IN OHM(S). ALL CAPACITORS ARE CERAMIC CAPACITOR OR MYLAR CAPACITOR. ALL CAPACITANCE VALUES ARE IN #F(P=PF). ALL INDUCTANCE VALUES ARE IN #H(M=MH). ALL C CAPACITORS ARE SHOWN IN THE FORM OF CAPACITANCE (#F)/RATED VOLTAGE (V).
 ▮ POLYPROPYLENE CAPACITOR

⚠ Parts are safety assurance parts. When replacing those parts make sure to use the specified one.

➡ TAPE SIGNAL

Tuner section

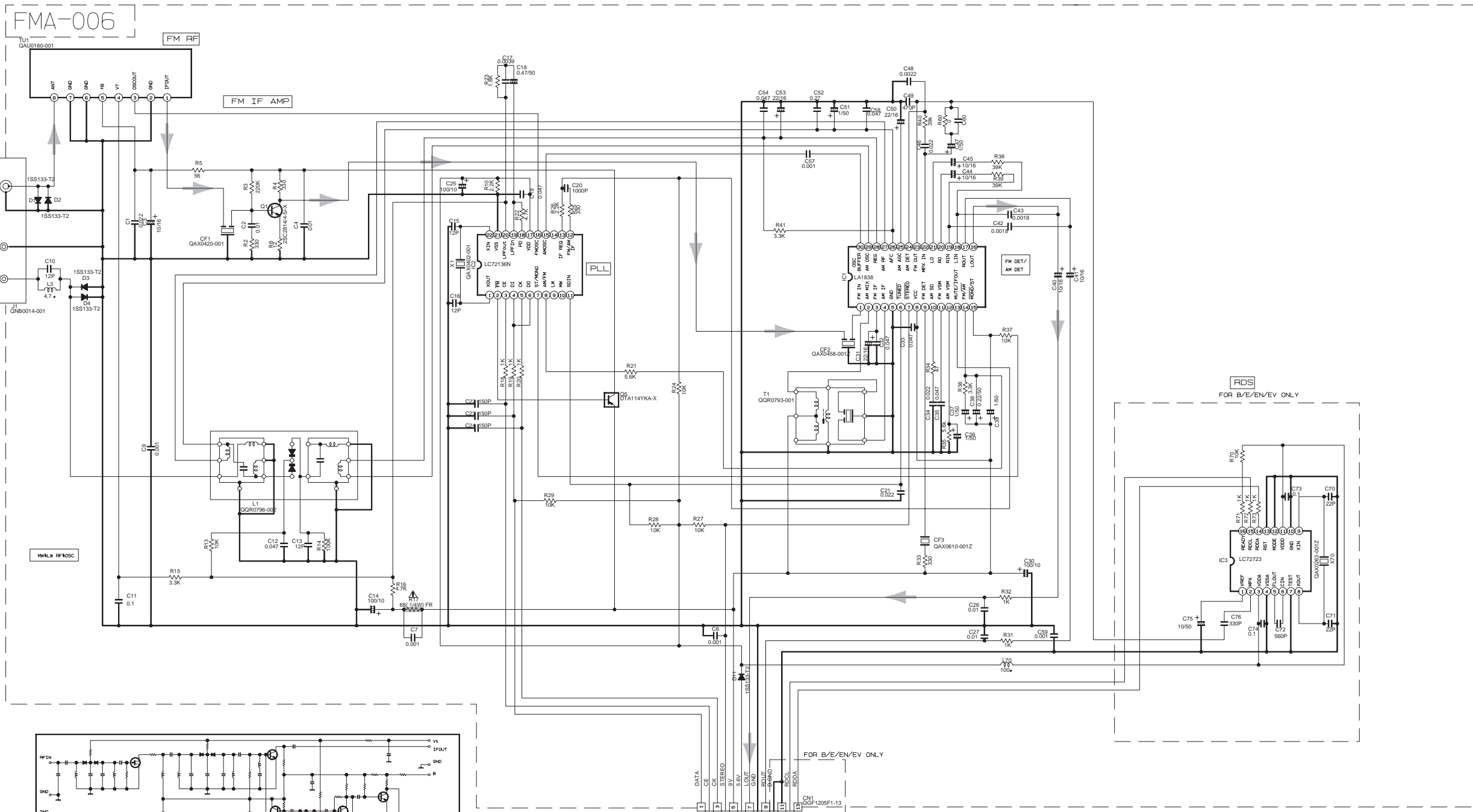
5

4

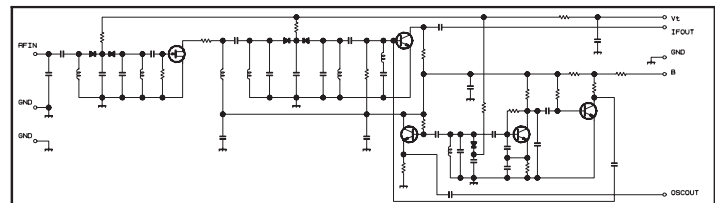
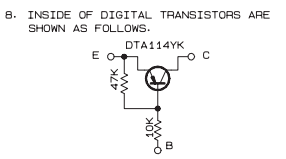
3

2

1



- NOTES
- VOLTAGES ARE DC-MEASURED WITH A DIGITAL VOLT METER.
 - ALL RESISTORS ARE 1/8W ±5% METAL GLAZE RESISTOR.
 - ALL RESISTANCE VALUES ARE IN OHM(Ω).
 - ALL CAPACITANCE VALUES ARE IN P(F) OR PF.
 - ALL E-CAPACITORS ARE SHOWN IN THE FORM OF CAPACITANCE (PF)/RATED VOLTAGE (V).
 - SI DIODES (D1) ARE ALL 1S5133-T THAT CAN BE CHANGED TO SIMILAR DIODE SUCH AS MA165 OR HSS104J.
 - PARTS NO. OF TRANSISTORS ARE AS FOLLOWS:
 Q1 2SC2814/4-B/-X Q2-Q3 2SC2412K/R/-X
 Q4-Q5 DTA114YKA-X



CONDITION	PIN NO.	1	2	3	4	5	6	7	8	9	10	11	12	13	14	15	16	17	18	19	20	21	22	23	24	25	26	27	28	29	30
FM NO SIGNAL	IC1	3.6	8.9	3.6	3.6	0	5.0	5.0	8.9	8.9	1.3	0.1	0	0.9	7.8	7.8	4.3	4.3	4.3	4.3	3.4	3.4	2.8	3.4	0	0	3.5	3.5	3.6	2.7	
FM 60dB STEREO	IC1	3.6	8.9	3.6	3.6	0	5.0	5.0	8.9	8.9	1.3	4.3	0	0.9	7.8	7.8	4.3	4.3	4.3	4.3	3.4	3.4	2.8	3.4	0	0	3.6	3.6	3.6	3.6	2.7
AM NO SIGNAL	IC2	3.5	9.0	3.5	3.5	0	5.0	5.1	9.0	2.6	1.3	0	0	0.9	4.7	5.5	4.3	4.3	4.3	3.3	3.2	2.8	ust	0.7	0.7	3.6	3.6	3.6	3.6	2.1	
FM NO SIGNAL	IC2	2.5	0	0	5.0	4.9	5.0	7.9	7.8	3.6	6.1	5.1	0	0	0	2.5	5.1	0.9	0.9	3.8	0	2.3									

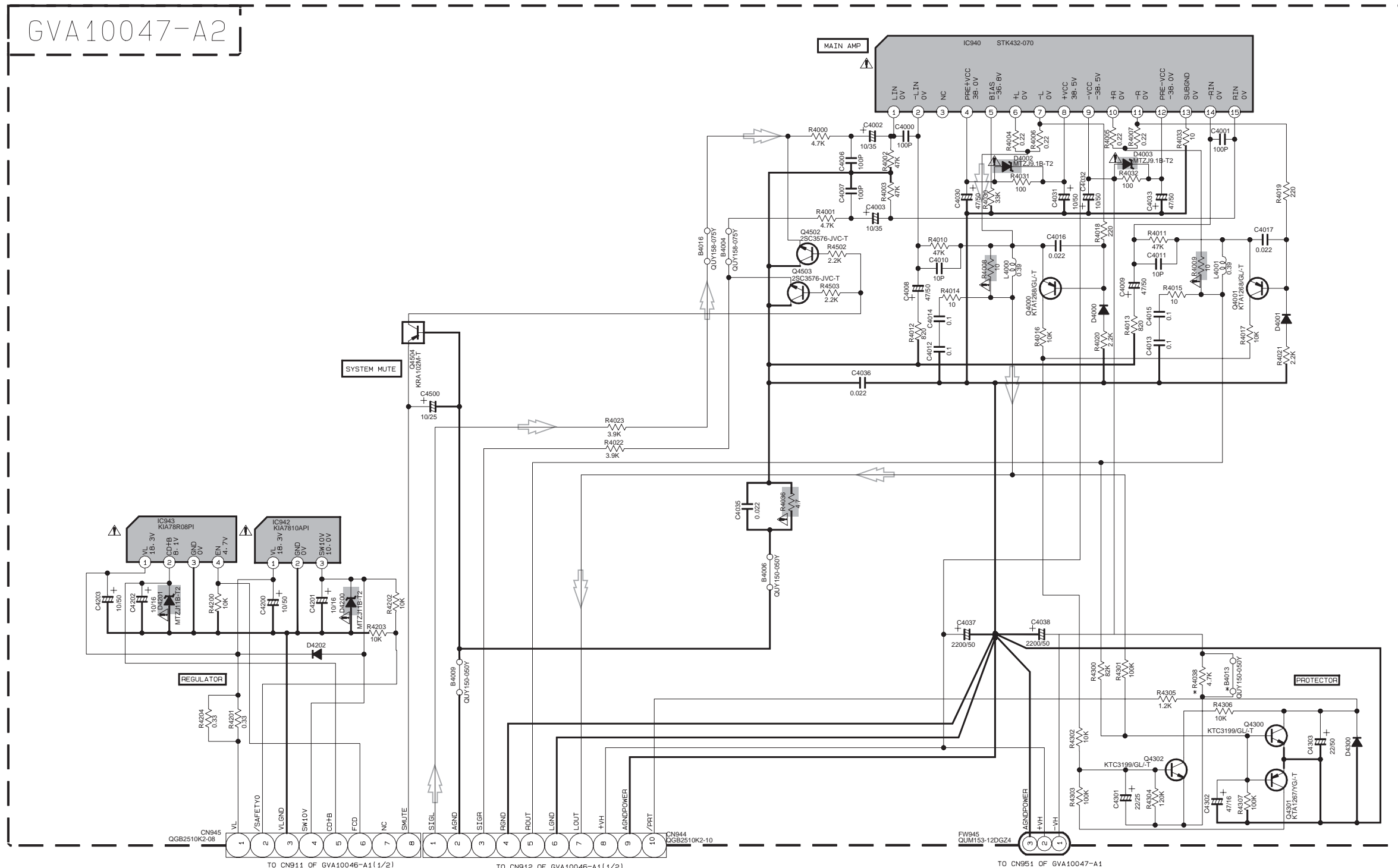
Tr NO.	Q1	Q5
PIN NO.	E C B E C B	E C B E C B
FM 87.5MHz NO SIGNAL	0 7.1 0.85 8.9 8.8 0	
AM 52KHz NO SIGNAL	0 0 0 9.0 0 8.9	

Tr NO.	Q2	Q3	Q4
PIN NO.	E C B E C B E C B		
AM 52KHz NO SIGNAL	0 0 0.7 0 0 0.7 0 3.6 0.7		
AM 144KHz NO SIGNAL	0 0 0.3 0 0.3 0.3 3.6 3.6 3.6		

➔ TUNER SIGNAL

A B C D E F G H

Power / Multi regulator section



*MARK

VERSION	R4038	B4013
C	O	X
A/B/E/EN/EV		
U/UJ/UP/UF/UT/UW	X	O

X = NOT USE
O = USE

▲ Parts are safety assurance parts. When replacing those parts make sure to use the specified one.

➡ MAIN SIGNAL

NOTES

- VOLTAGES ARE DC-MEASURED USING A DIGITAL VOLTMETER OR AN OSCILLOSCOPE WITHOUT INPUT SIGNAL CONDITION
- UNLESS OTHERWISE SPECIFIED
ALL RESISTORS ARE 1/8W 5% CARBON RESISTOR.
ALL CAPACITORS ARE 50V CERAMIC CAPACITOR OR 50V MYLAR CAPACITOR.
ALL RESISTANCE VALUES ARE IN OHM(Ω).
ALL CAPACITANCE VALUES ARE IN *F(P=pF).
ALL E. CAPACITORS ARE SHOWN IN THE FORM OF CAPACITANCE(±F)/RATED VOLTAGE (V).
ALL DIODES ARE 1SS119-041-T2 TYPE UNLESS SPECIFIED
POLYPROPYLENE CAPACITOR
50V ±5% MYLAR CAPACITOR OR 50V 5% EMIN FILM CAPACITOR
- THOSE PART WITH BRACKET IS NOT USED.
FOR RESISTOR-IT WOULD BE A SHORT.
FOR CAPACITOR-IT WOULD BE AN OPEN.

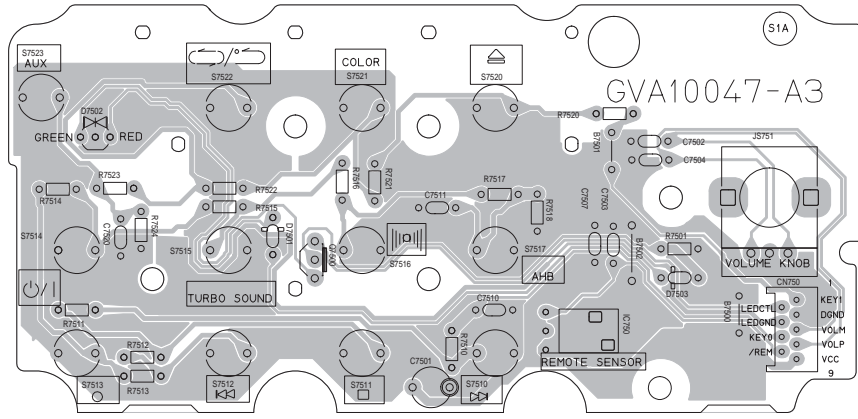
5
4
3
2
1

A B C D E F G H

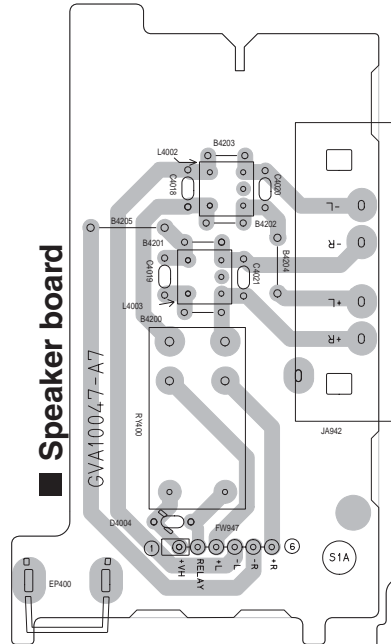
Printed circuit boards

5

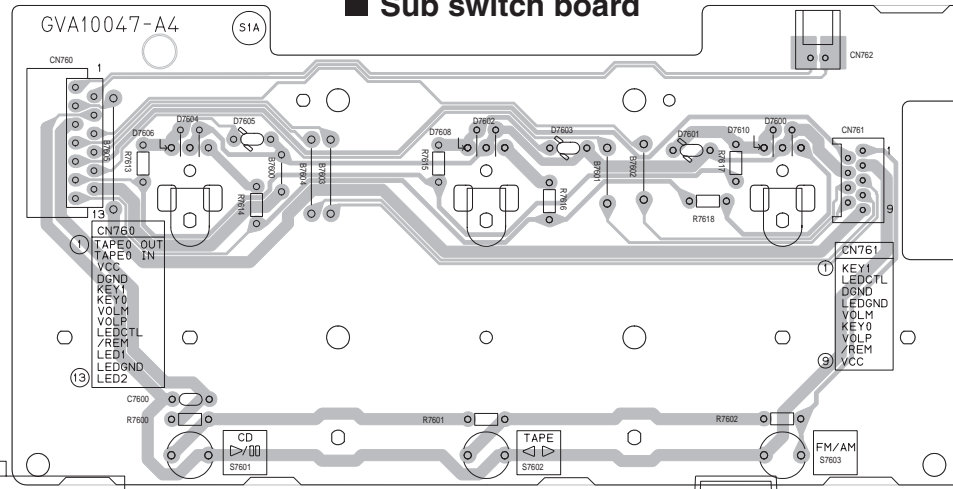
■ Switch board



■ Speaker board

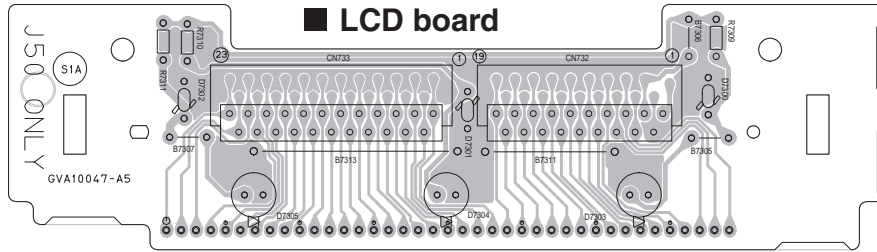


■ Sub switch board

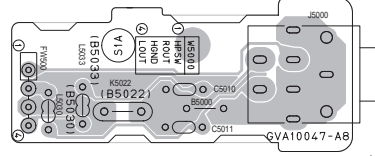


4

■ LCD board

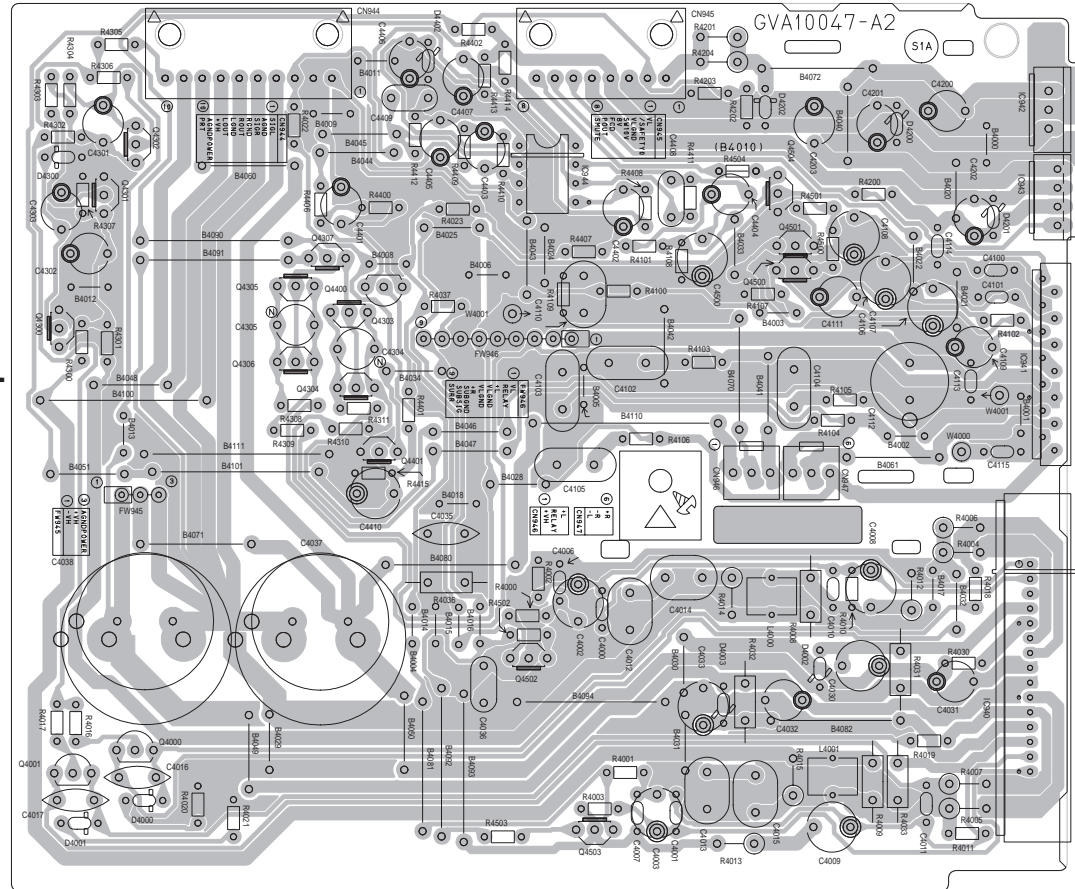


■ Headphone board

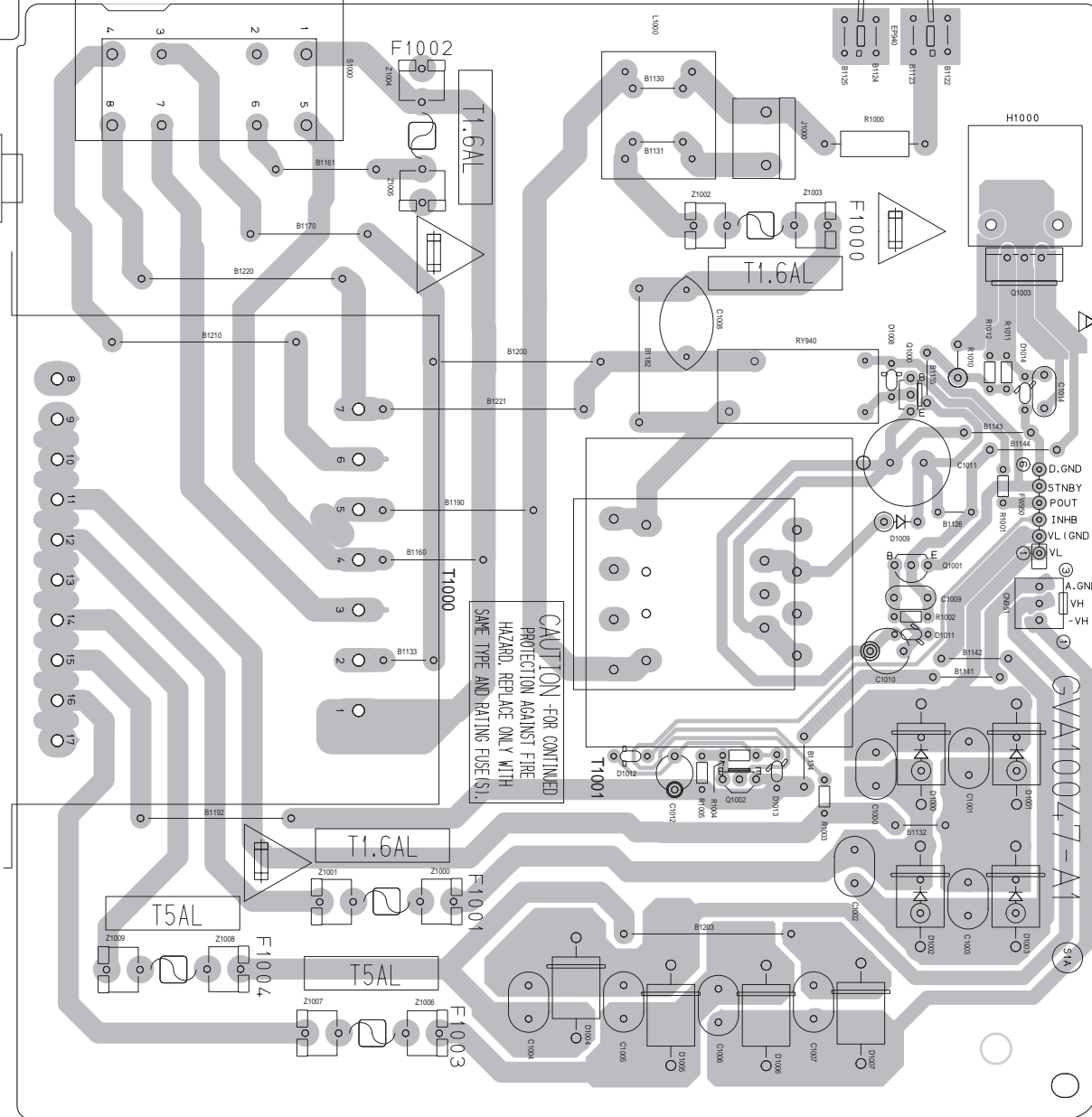


3

■ Power amp board



2

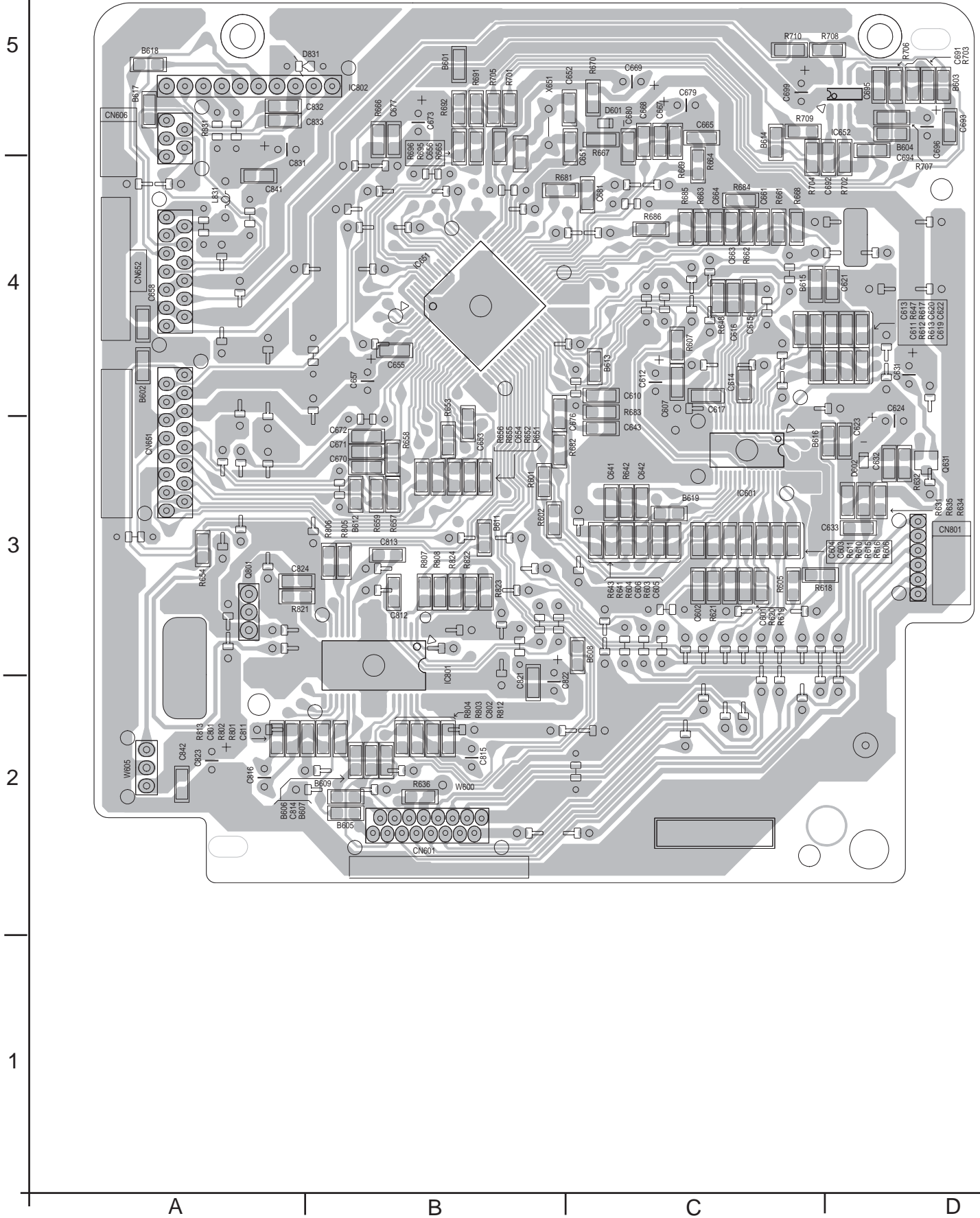


■ Power trans board

1

A B C D E F G H

■ CD servo control board




UX-J50

JVC

VICTOR COMPANY OF JAPAN, LIMITED

AV & MULTIMEDIA COMPANY AUDIO/VIDEO SYSTEM CATEGORY 10-1,1chome,Ohwatari-machi,Maebashi-city,371-8543,Japan

(No.22032SCH)

 Printed in Japan
200303