

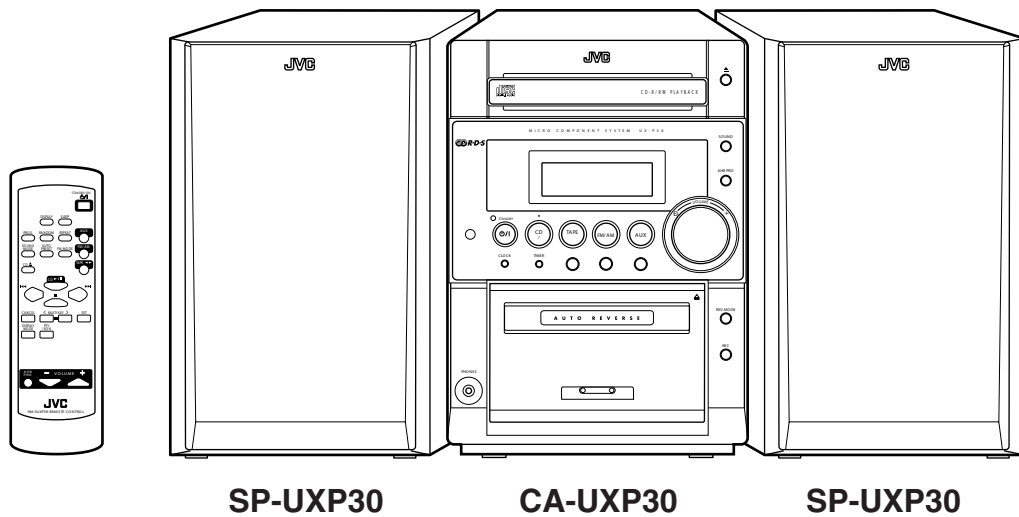
# JVC

# SCHEMATIC DIAGRAMS

## MICRO COMPONENT SYSTEM

### UX-P30

CD-ROM No.SML200311



#### Area Suffix

B ----- U.K.  
E ----- Continental Europe  
EN ----- Northern Europe

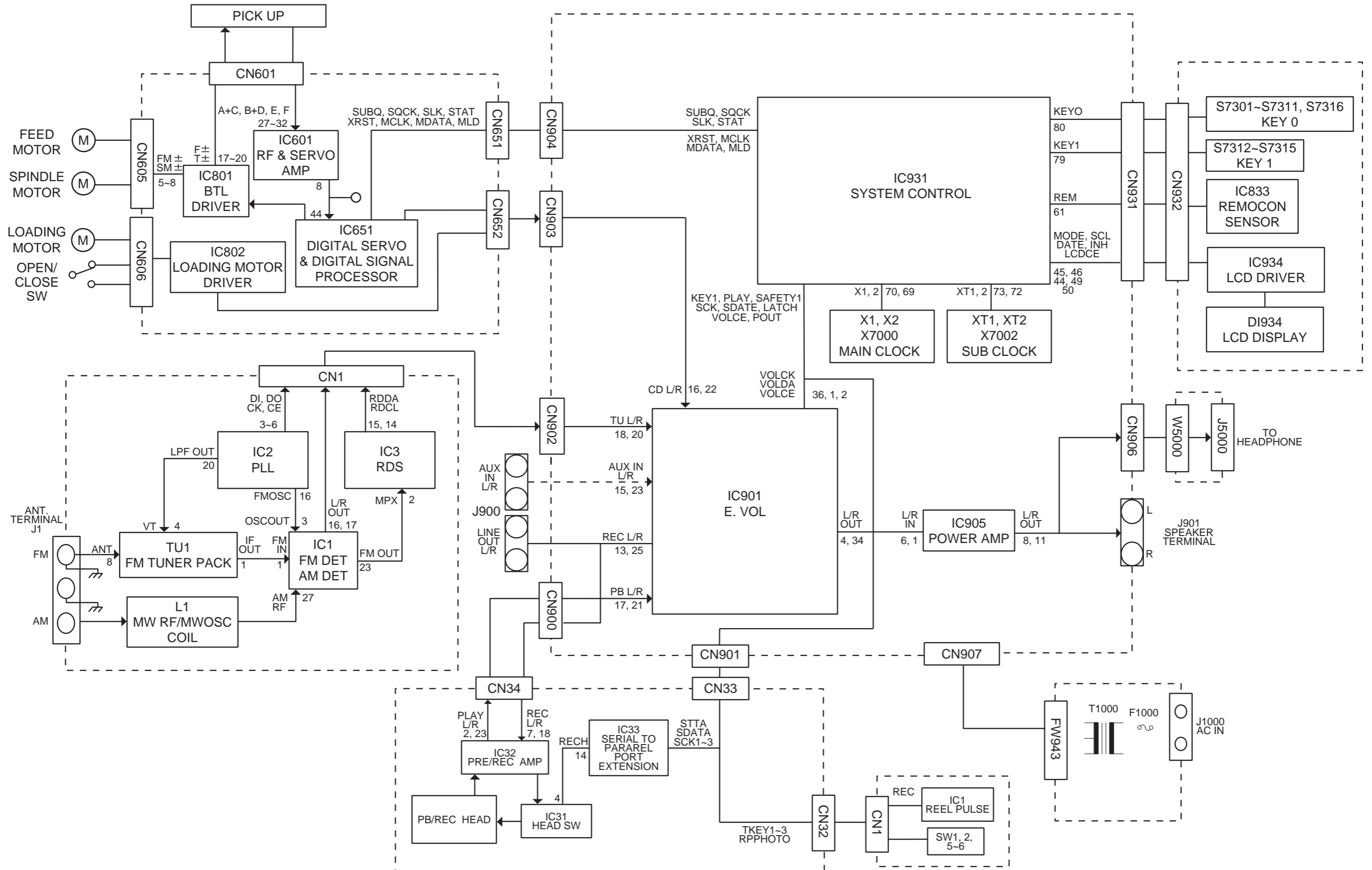
### Contents

Block diagram -----	2-1
Standard schematic diagrams -----	2-2
Printed circuit boards -----	2-8 to10

In regard with component parts appearing on the silk-screen printed side (parts side) of the PWB diagrams, the parts that are printed over with black such as the resistor (■), diode (▣) and ICP (●) or identified by the "▲" mark nearby are critical for safety.

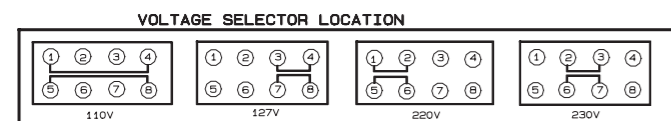
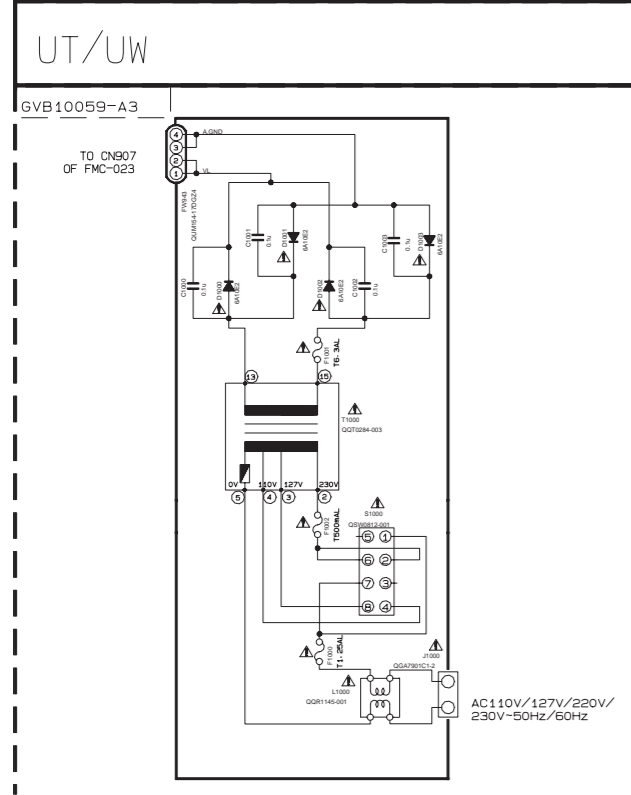
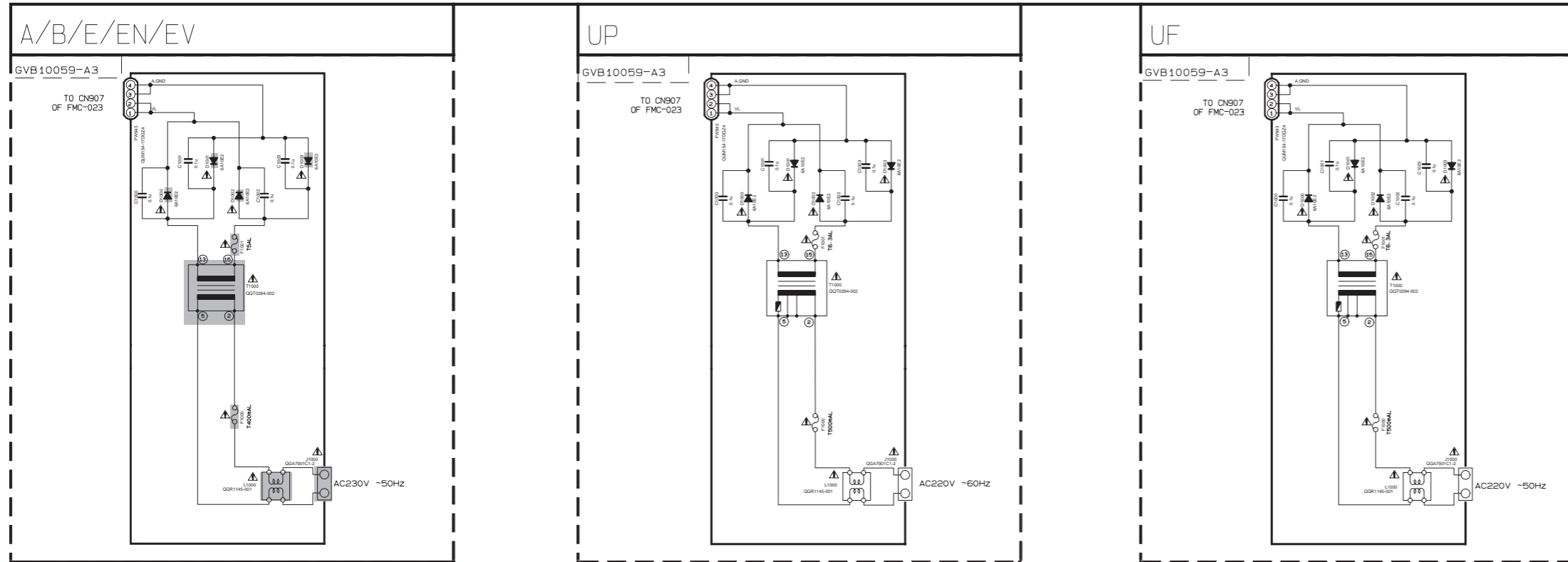
(This regulation does not correspond to J and C version.)

# Block diagram



# Standard schematic diagrams

## Power supply section



EXPLANATION OF OVERALL OF SCHEMATIC

MODEL : UX-P30

SHEET NUMBER	MODEL NUMBERS TO BE APPLIED	CIRCUITS DESCRIPTION
1/7	UX-P30	· PRIMARY WITH MAINS TRANSFORMER
2/7	UX-P30	· DC REGULATOR, AUDIO OUTPUT · EXTERNAL INPUT, SOURCE SELECTOR SWITCH
3/7	UX-P30	· LCD DISPLAY/SYSTEM CONTROL/USERS KEY CONTROL
4/7	UX-P30	· CD SERVO AND CD SYSTEM CONTROL · CD CHANGER MECHANISM CONTROL
5/7	UX-P30	· TAPE DECK MECHANISM CONTROL · TAPE CIRCUITS SUCH AS PRE-AMP AND BIAS
6/7	UX-P30	· TUNER RF/IF/FM MULTIPLEX (ONLY FOR UP, UT, UW)
7/7	UX-P30	· TUNER RF/IF/FM MULTIPLEX (ONLY FOR A, B, E, EN, EV, UF)

NOTE : MARK(\*) IS TO SHOW DEVIATION IN VERSIONS. DETAILS ARE EXPLAINED NEAR MARK.

VERSION CODES

A	: AUSTRALIA
B	: U.K
E	: CONTINENTAL EUROPE
EN	: NORDIC COUNTRIES
EV	: EASTERN EUROPE
UF	: CHINA
UP	: KOREA
UW	: SOUTH AFRICA
UT	: TAIWAN

NOTES

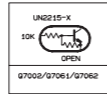
1. VOLTAGES ARE DC-MEASURED WITH A DIGITAL VOLT METER OR OSCILLOSCOPE WITHOUT INPUT SIGNAL.  
CONDITION --- CD STOP MODE  
INSIDE BRACKET VALUES ARE OTHER FUNCTIONS

2. UNLESS OTHERWISE SPECIFIED, RESISTORS ARE 1/8W ±5% CARBON RESISTOR.  
ALL RESISTANCE VALUES ARE IN OHM(Ω).  
ALL CAPACITORS ARE CERAMIC CAPACITOR OR NYLON CAPACITOR.  
ALL CAPACITANCE VALUES ARE IN pF(pF).  
ALL INDUCTANCE VALUES ARE IN mH(mH).  
ALL CAPACITORS ARE SHOWN IN THE FORM OF CAPACITANCE (μF)/RATED VOLTAGE (V).

Parts are safety assurance parts. When replacing those parts make sure to use the specified one.

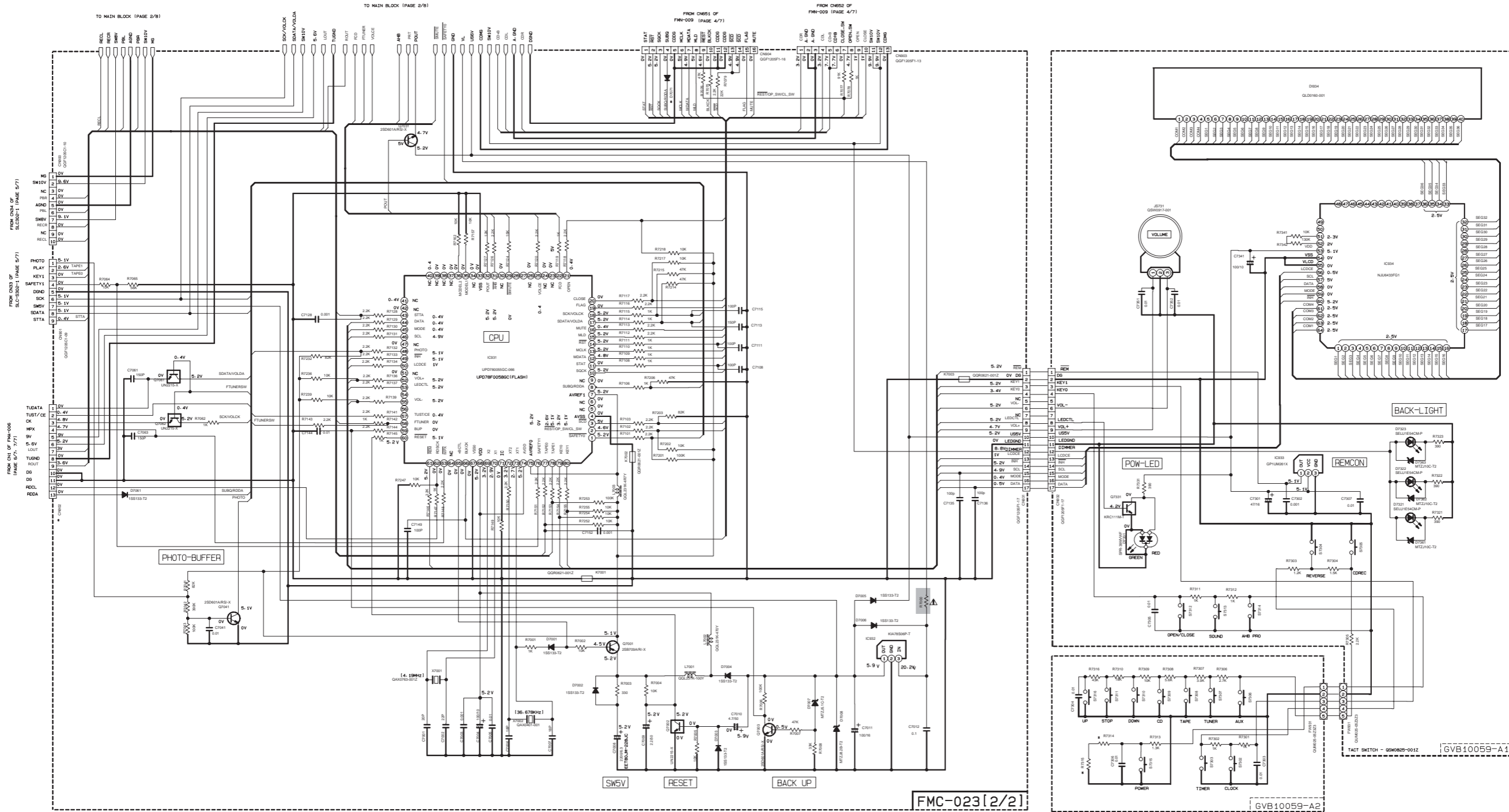


# LCD control / Main micon section



\* MARK

VERSION	(U/P/R/A/T/M)	(A)	(E/EN/REV)
D7071/BM	BM	BM	D7071
R7314 (VERSION)	B/W	open	B/W
R7315 (VERSION)	47K	open	15K
CHK02	GF1200F1-09		GF1200F1-13

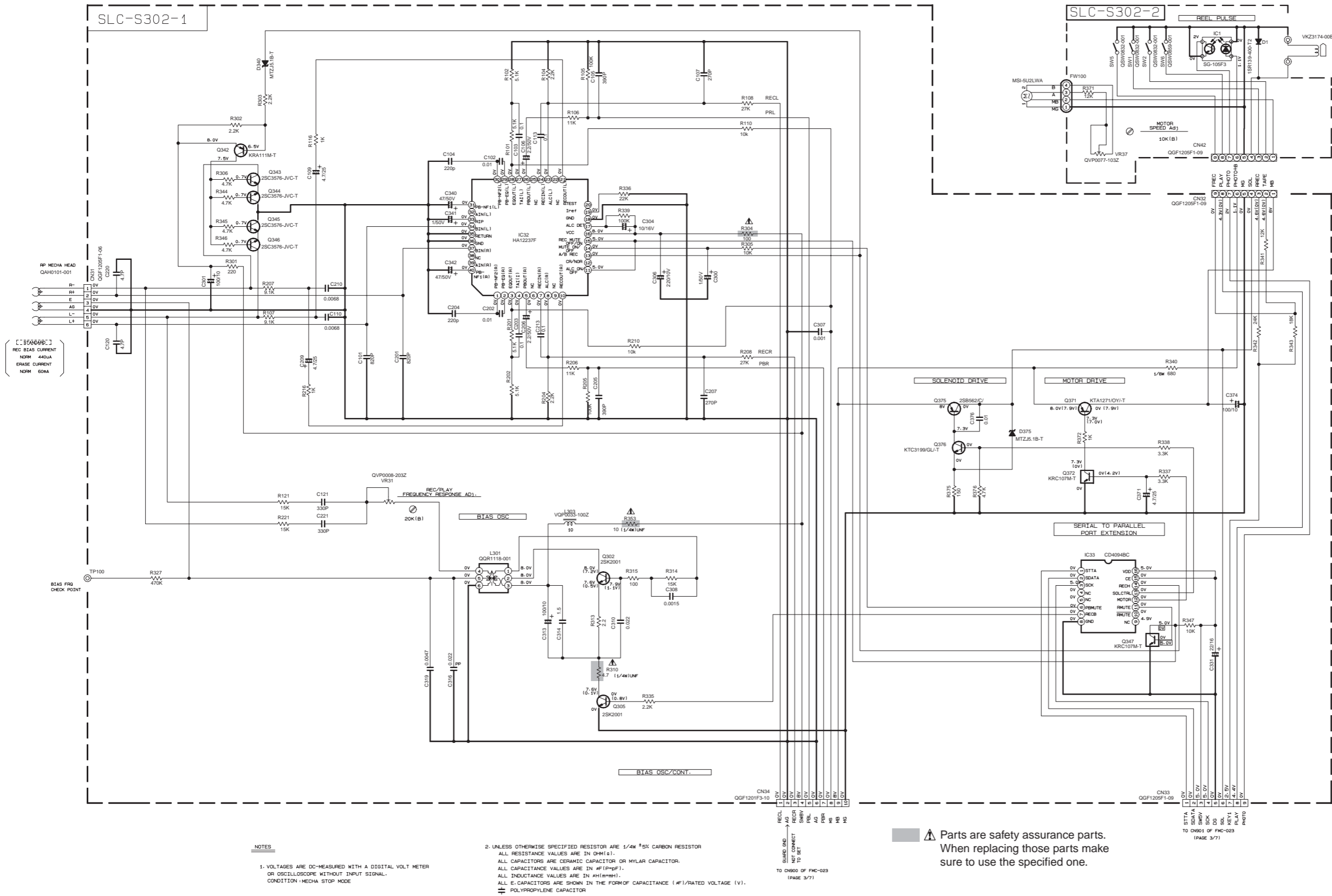


- NOTES
- VOLTAGES ARE DC-MEASURED WITH A DIGITAL VOLT METER OR OSCILLOSCOPE WITHOUT INPUT SIGNAL. CONDITION — CD STOP MODE.
  - UNLESS OTHERWISE SPECIFIED, ALL RESISTORS ARE 1/4W ±5% CARBON RESISTOR. ALL CAPACITORS ARE CERAMIC CAPACITOR OR MYLAR CAPACITOR. ALL RESISTANCE VALUES ARE IN OHM(S). ALL CAPACITANCE VALUES ARE IN #F(PpF). ALL INDUCTANCE VALUES ARE IN #H(mH). ALL E-CAPACITORS ARE SHOWN IN THE FORM OF CAPACITANCE(#F)/RATED VOLTAGE (V). ALL DIODES ARE 1SS133-T2 TYPE UNLESS SPECIFIED.

Parts are safety assurance parts. When replacing those parts make sure to use the specified one.



# Cassette mechanism control section



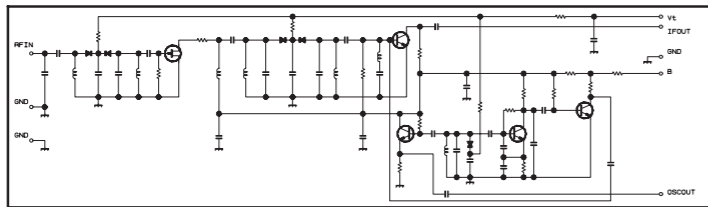
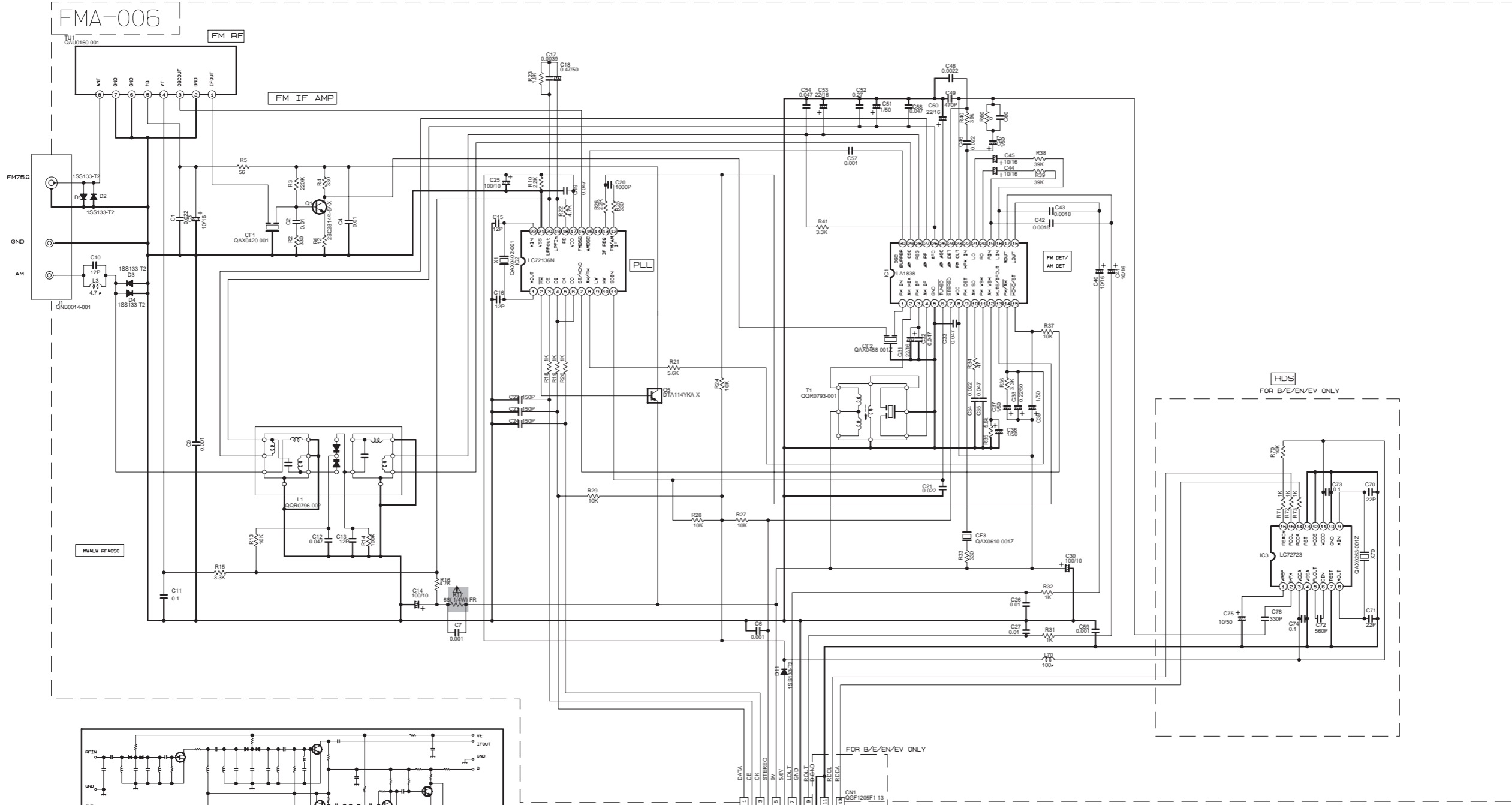
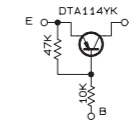
Parts are safety assurance parts. When replacing those parts make sure to use the specified one.



# Tuner section

- NOTES
1. VOLTAGES ARE DC-MEASURED WITH A DIGITAL VOLT METER.
  2. ALL RESISTORS ARE 1/8W ±5% METAL GLAZE RESISTOR.
  3. ALL RESISTANCE VALUES ARE IN OHM(Ω).
  4. ALL CAPASITANCE VALUES ARE IN #F(P=pF).
  5. ALL E. CAPASITORS ARE SHOWN IN THE FORM OF CAPASITANCE (#F)/RATED VOLTAGE (V).
  6. SI DIODES (D) ARE ALL 1SS133-T THAT CAN BE CHANGED TO SIMILAR DIODE SUCH AS MA165 OR HRS104J.
  7. PARTS NO. OF TRANSISTORS ARE AS FOLLOWS.  
 Q1 2SC2814/4-E/-X Q2-Q3 2SC2412K/R/-X  
 Q4-Q5 DTA114YKA-X

B. INSIDE OF DIGITAL TRANSISTORS ARE SHOWN AS FOLLOWS:



CONDITION	PIN NO.	1	2	3	4	5	6	7	8	9	10	11	12	13	14	15	16	17	18	19	20	21	22	23	24	25	26	27	28	29	30
IC1	FM NO SIGNAL	3.6	8.9	3.6	3.6	0	5.0	5.0	8.9	8.9	1.3	0.1	0	0.9	7.8	7.8	4.3	4.3	4.3	4.3	3.4	3.4	2.8	3.4	0	3.5	3.5	3.6	3.6	2.7	
IC1	FM 600B STEREO	3.6	8.9	3.6	3.6	0	5.0	5.0	8.9	8.9	1.3	4.3	0	0.9	7.8	7.8	4.3	4.3	4.3	4.3	3.4	3.4	2.8	3.4	0	3.6	3.6	3.6	3.6	2.7	
IC1	AM NO SIGNAL	3.5	9.0	3.5	3.5	0	5.0	5.1	9.0	2.6	1.3	0	0	0.9	4.7	5.5	4.3	4.3	4.3	4.3	3.3	3.2	2.8	ust	0.7	0.7	3.6	3.6	3.6	2.1	
IC2	FM NO SIGNAL	2.5	0	0	5.0	4.9	5.0	7.9	7.8	3.6	6.1	5.1	0	0	0	0	2.5	5.1	0.9	0.9	3.8	0	2.3								

TO CN902 OF FMC-023 (PAGE 3/7)

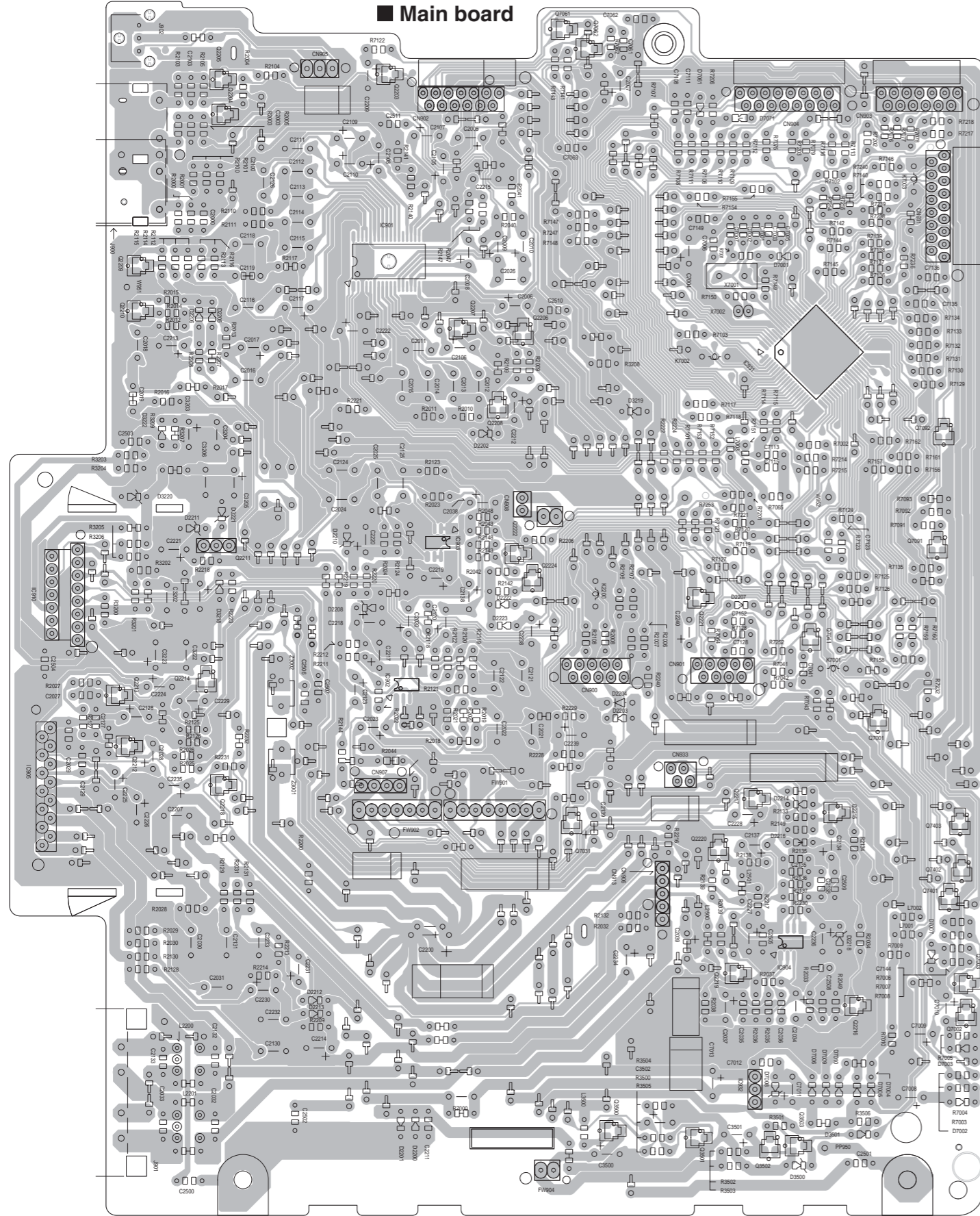
Tr NO.	Q1	Q5
PIN NO.	E C B	E C B
FM 87.5MHz NO SIGNAL	0 7.1 0.95	8.9 8.8 0
AM 522kHz NO SIGNAL	0 0 0	9.0 0 8.9

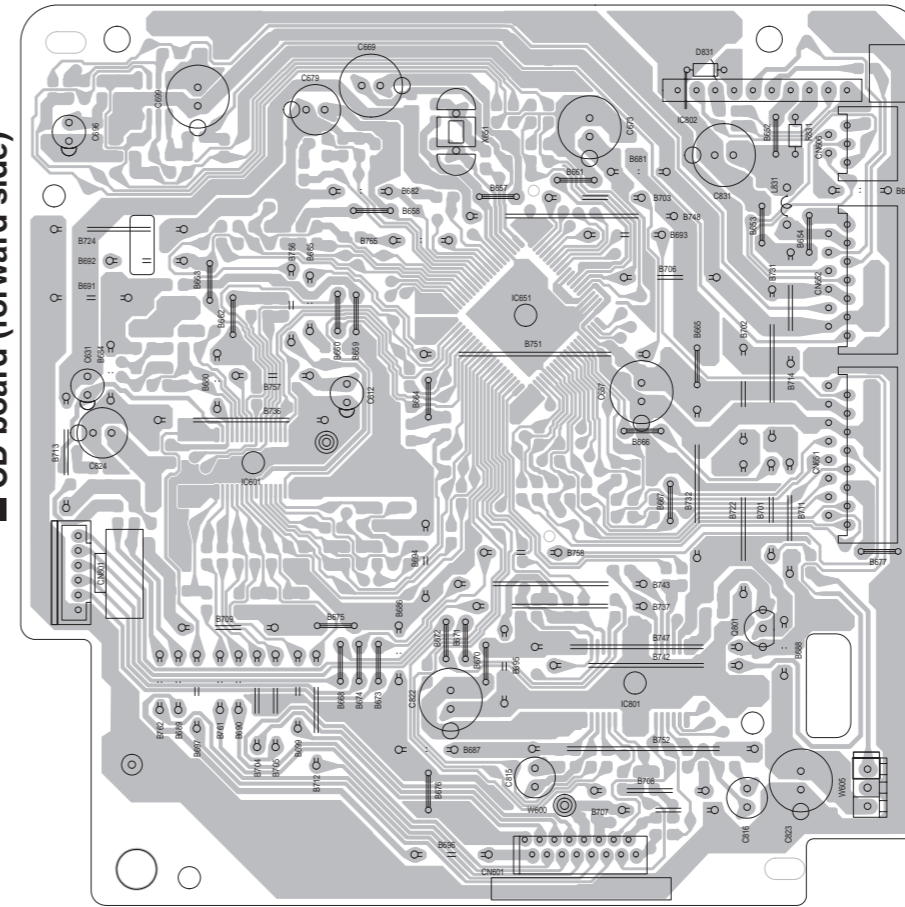
Tr NO.	Q2	Q3	Q4
PIN NO.	E C B	E C B	E C B
AM 522kHz NO SIGNAL	0 0 0.7	0 0 0.7	0 3.6 0.7
AM 144kHz NO SIGNAL	0 0 0.3	0 0.3 0.3	3.6 3.6 3.6

Parts are safety assurance parts. When replacing those parts make sure to use the specified one.

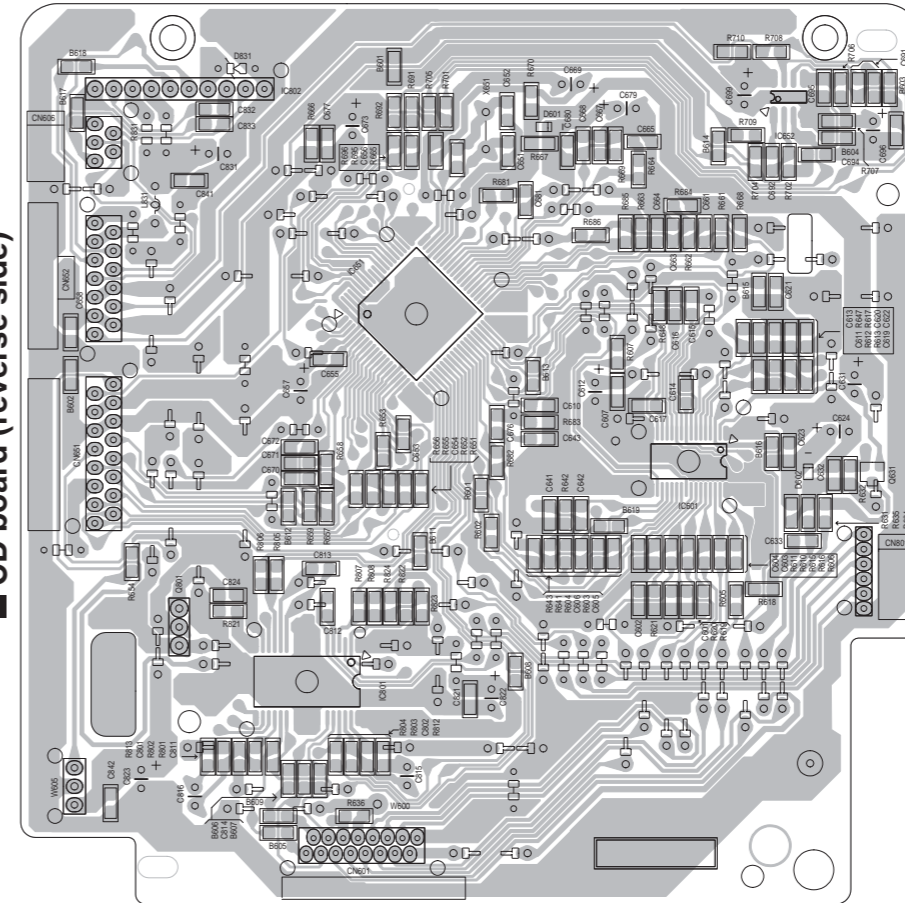
# Printec circuit boards



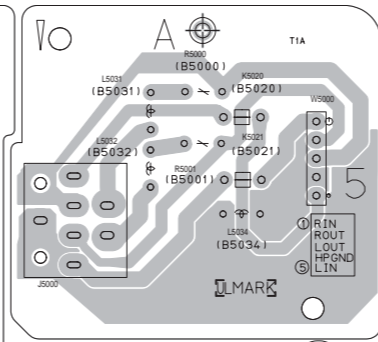
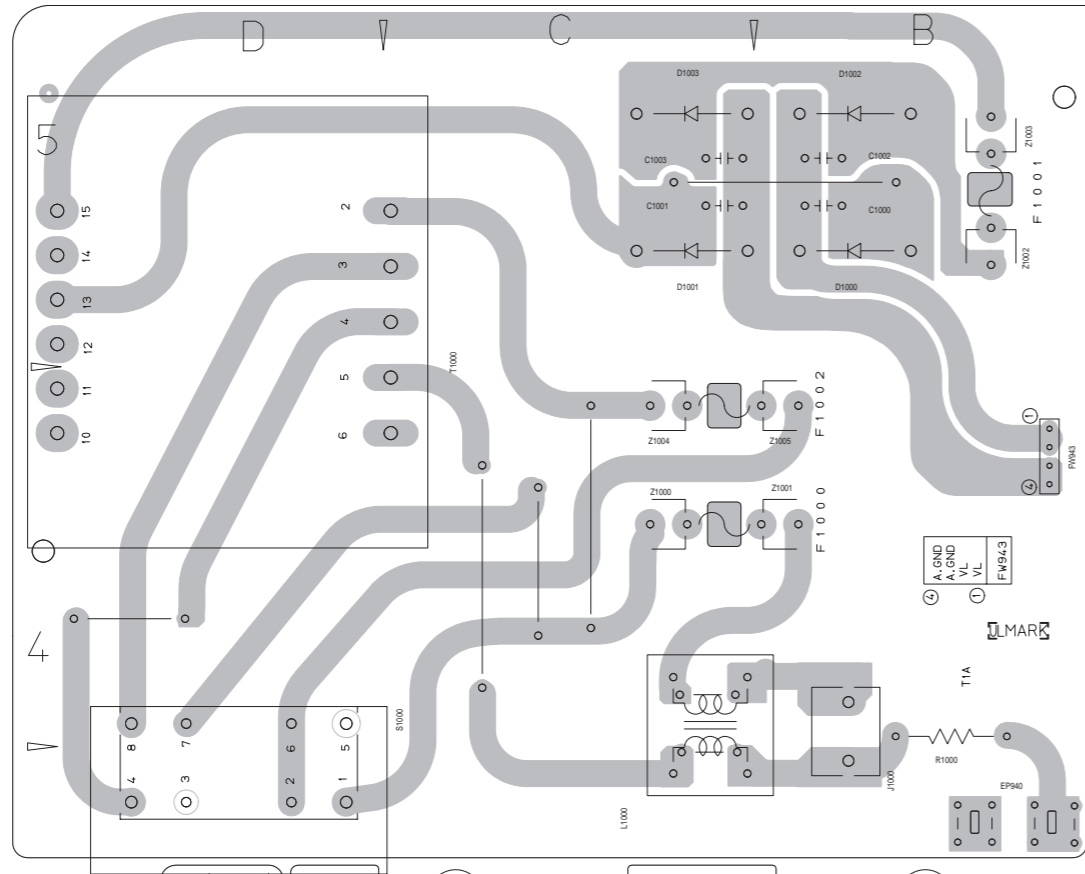
■ CD board (forward side)



■ CD board (reverse side)

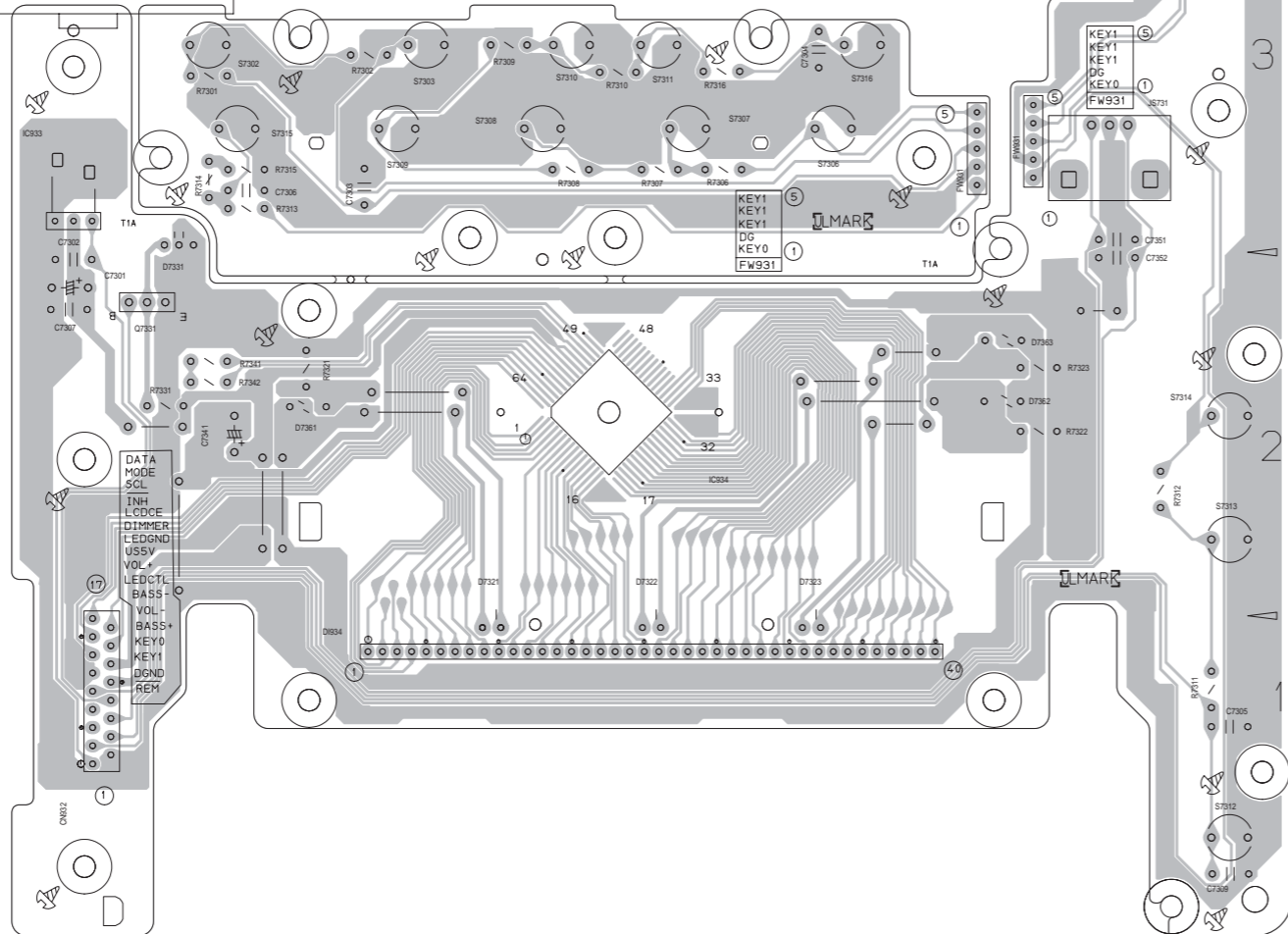


■ Trans board



■ Headphone board

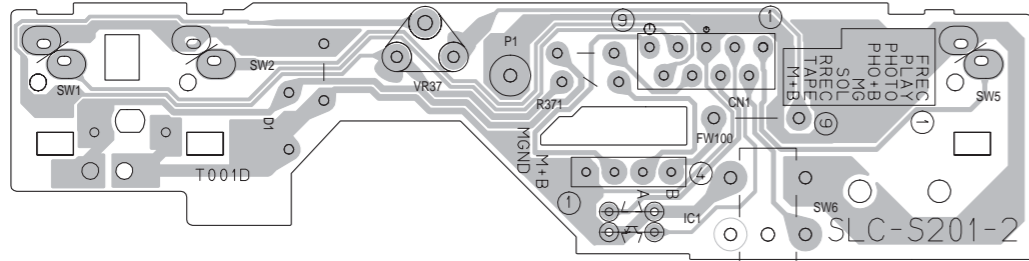
■ Sub switch board



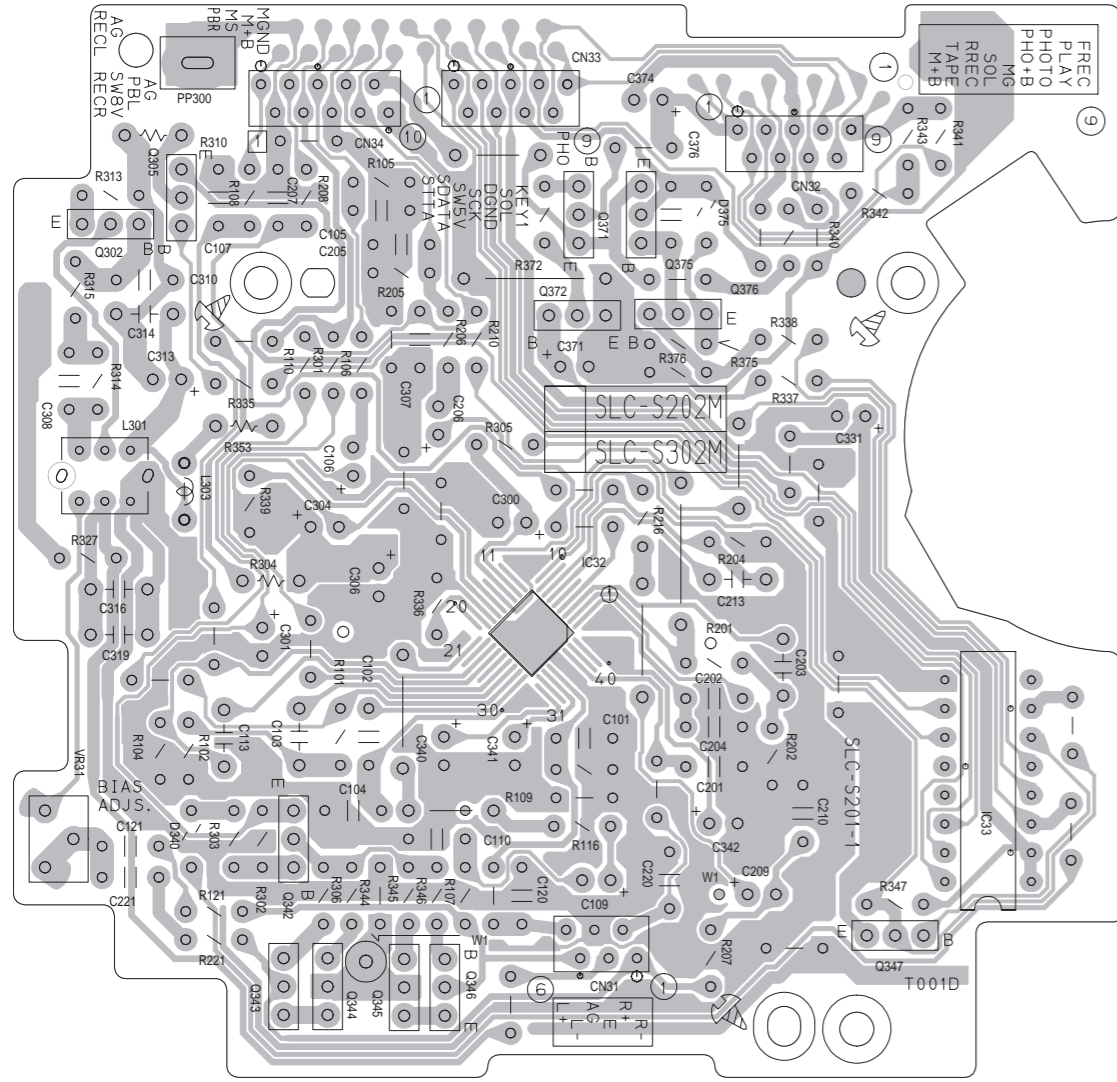
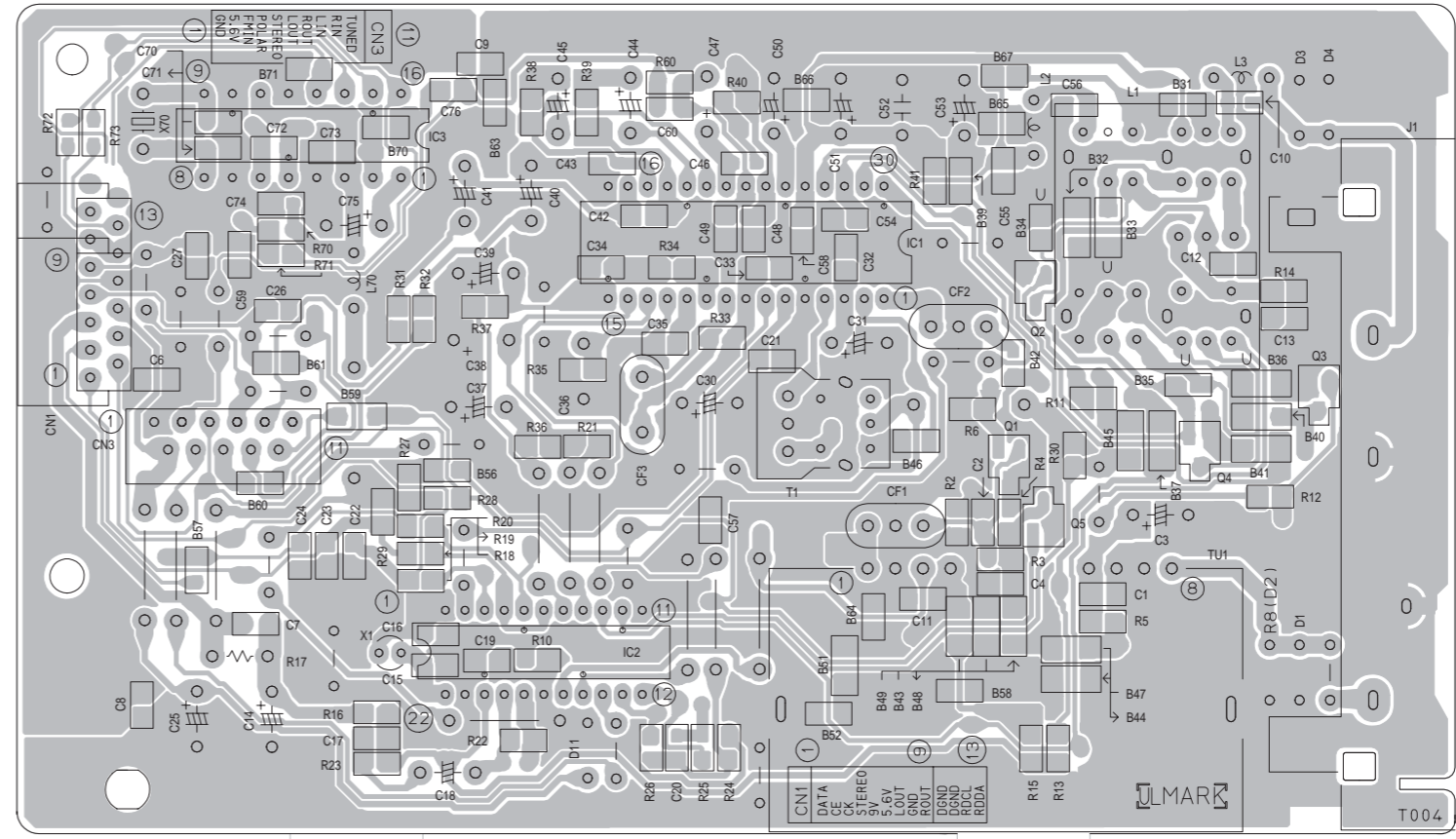
■ Front board



■ **Cassette control board**



■ **Tuner board**



< MEMO >

**JVC**

VICTOR COMPANY OF JAPAN, LIMITED

AV & MULTIMEDIA COMPANY AUDIO/VIDEO SYSTEMS CATEGORY 10-1, 1chome, Ohwatari-machi, Maebashi-city, 371-8543, Japan

(No.MB049SCH)



Printed in Japan  
WPC