

JVC

SCHEMATIC DIAGRAMS

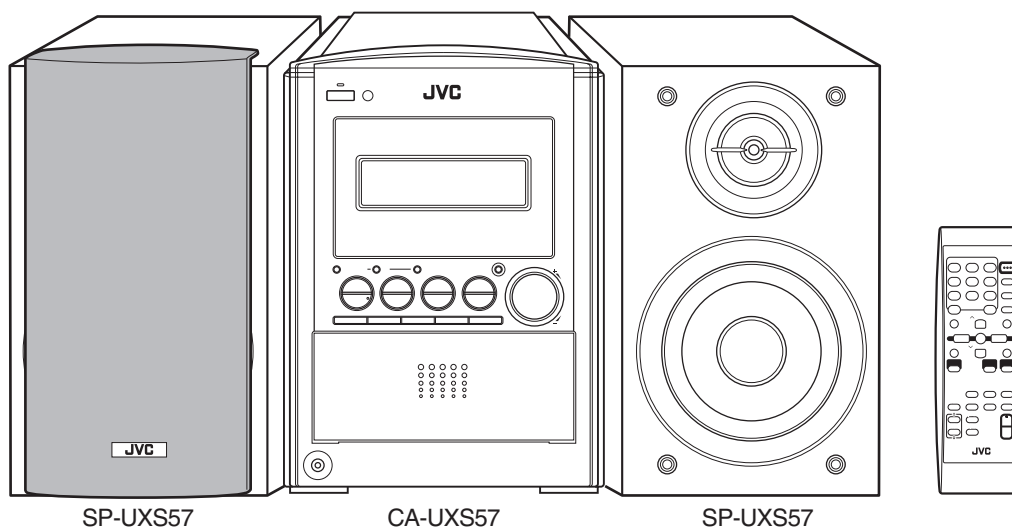
MICRO COMPONENT SYSTEM

UX-S57

CD-ROM No.SML200405

Area suffix

A ----- Australia
B ----- U.K.
E ----- Continental Europe
EN ----- Northern Europe
EV ----- Eastern Europe



COMPACT
disc
DIGITAL AUDIO

CD R-D-S

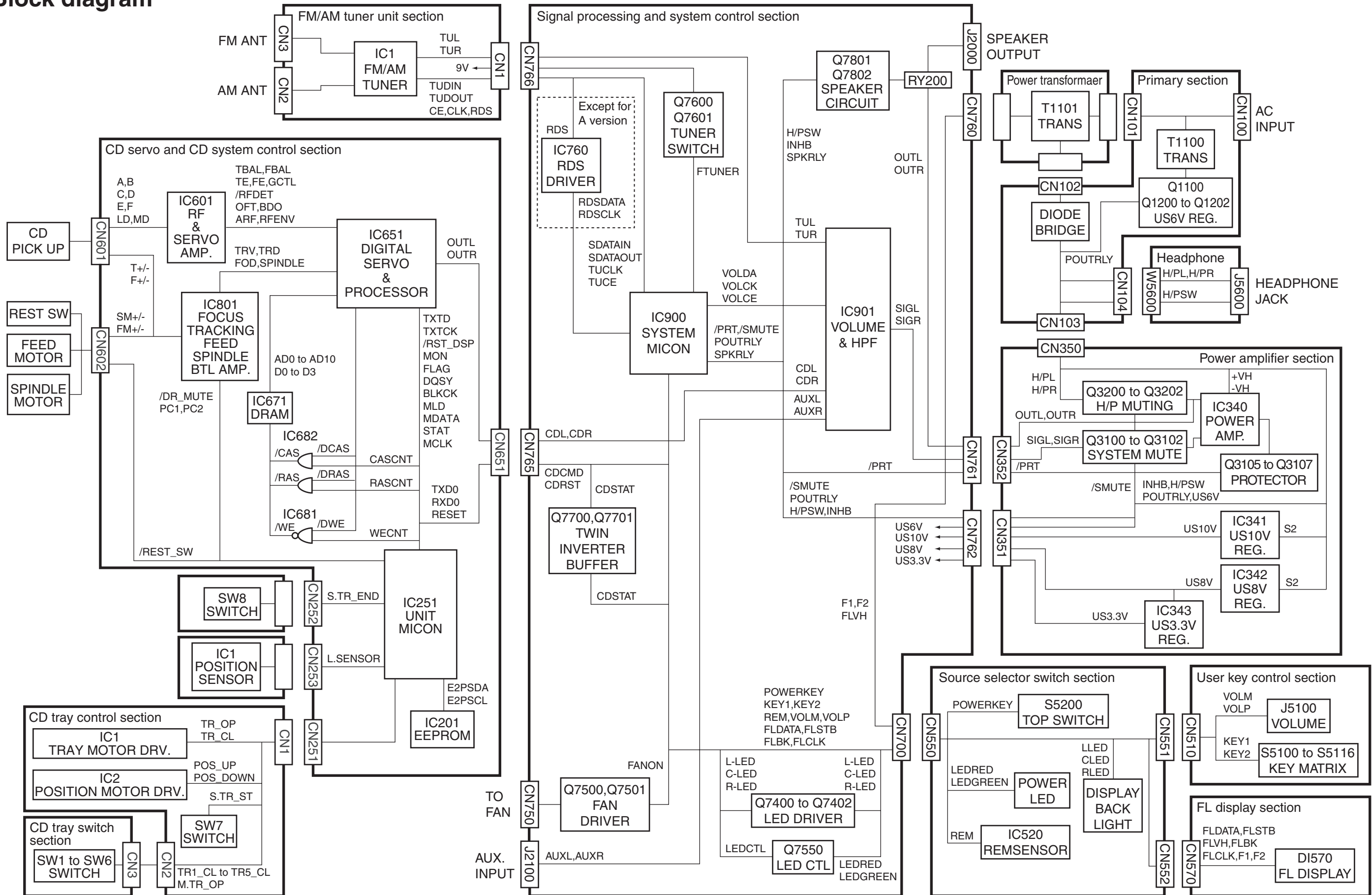
Contents

Block diagram	2-1
Standard schematic diagrams	2-2
Printed circuit boards	2-8 to 10

In regard with component parts appearing on the silk-screen printed side (parts side) of the PWB diagrams, the parts that are printed over with black such as the resistor (■), diode (⬤) and ICP (●) or identified by the "▲" mark nearby are critical for safety.

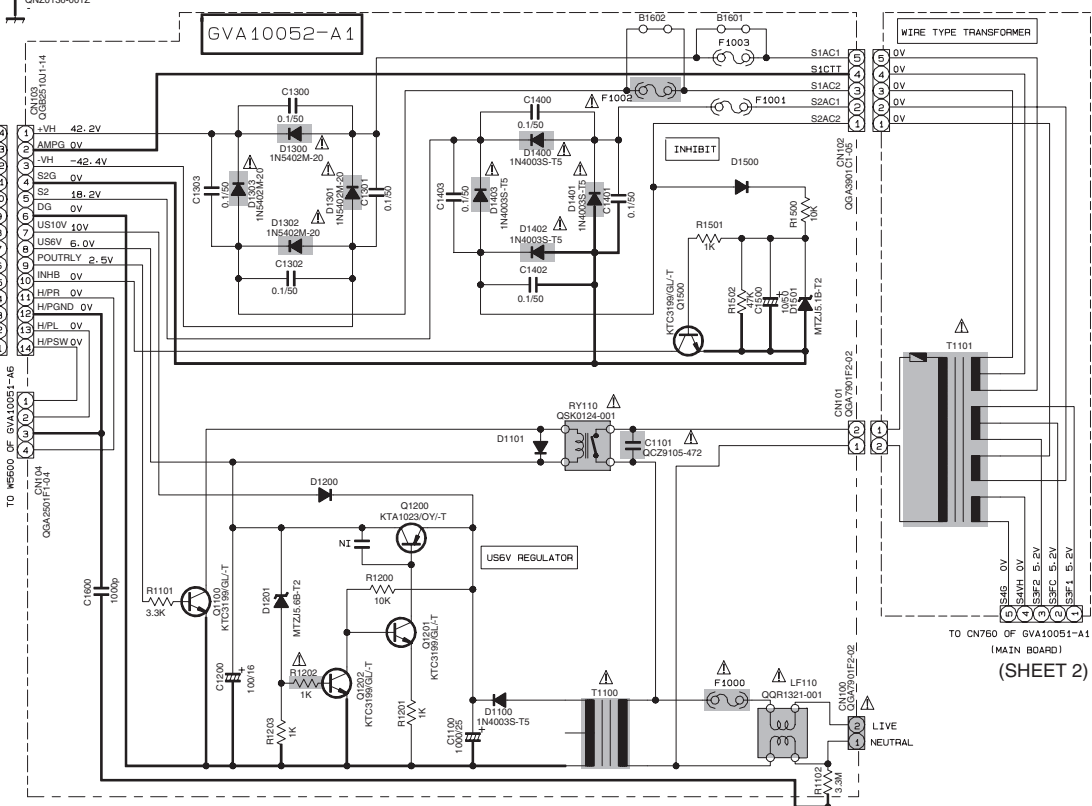
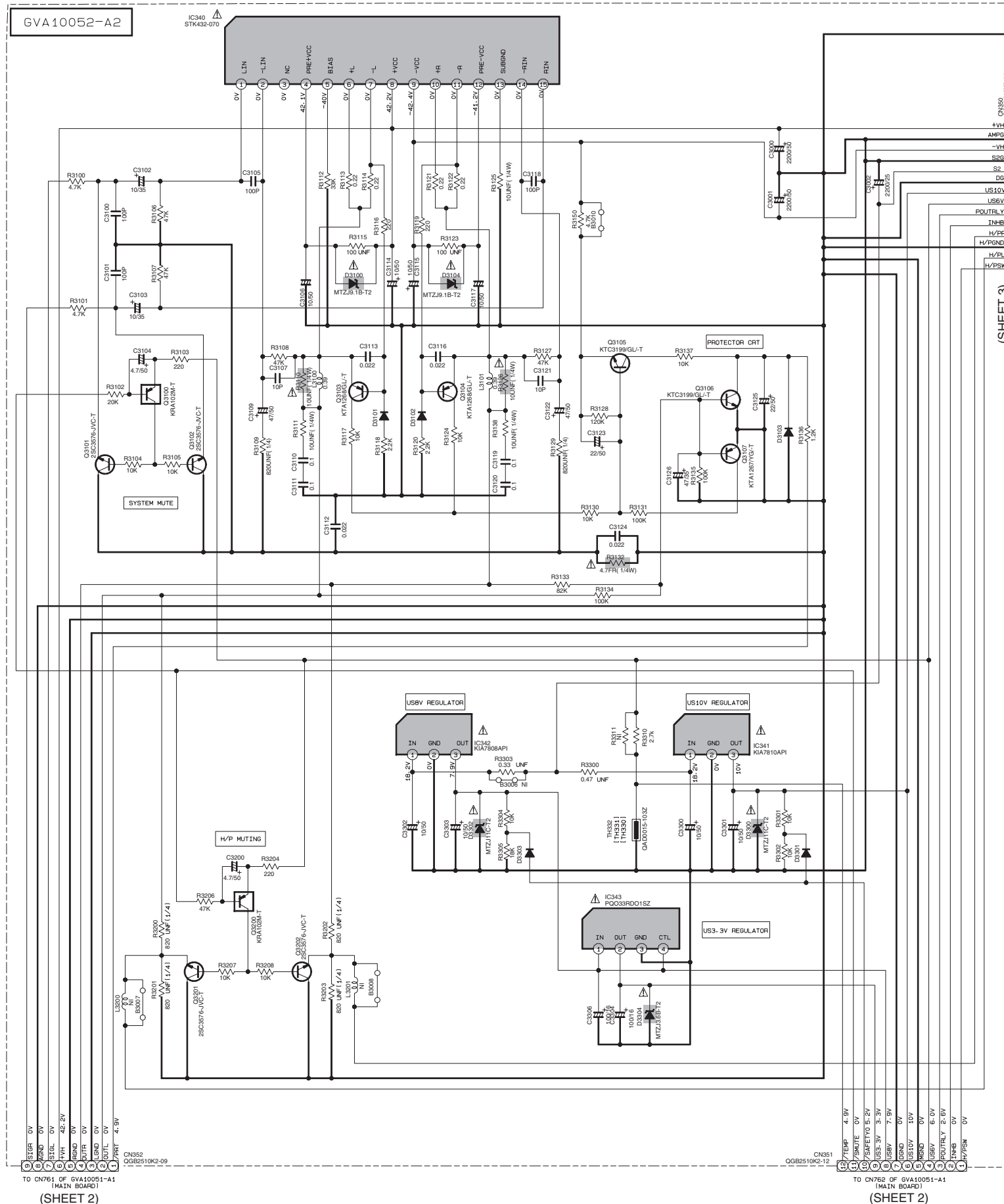
(This regulation does not correspond to J and C version.)

Block diagram



Standard schematic diagrams

Primary and power amplifier section



EXPLANATION OF OVERALL OF SCHEMATIC

MODEL : FS/UX-S57

SHEET NUMBER	MODEL NUMBERS TO BE APPLIED	CIRCUITS DESCRIPTION
1	FS/UX-S57	* PRIMARY AND POWER AMP
2	FS/UX-S57	* SIGNAL PROCESSING AND SYSTEM CONTROL
3	FS/UX-S57	* FL DISPLAY/USERS KEY CONTROL/SOURCE SELECTOR SWITCH
4	FS/UX-S57	* CD SERVO AND CD SYSTEM CONTROL
5	FS/UX-S57	* CD TRAY CONTROL
6	FS/UX-S57	* FM/AM TUNER UNIT (B/E/ENEV/UP/A)

VERSION	COUNTRY	T1101	T1100	F1000	F1001	F1002	F1003	R1102
J	USA	QQT0400-001	QQT0253-012	2.5A-125V	1.6A-125V	B1602	B1601	3.3M
C	CANADA	QQT0400-001	QQT0253-012	2.5A-125V	1.6A-125V	B1602	B1601	3.3M
B	U.K	QQT0400-002	QQT0253-002	T1.6AL	T1.6AL	T5AL	T5AL	--
E	CONTINENTAL EUROPE	QQT0400-002	QQT0253-002	T1.6AL	T1.6AL	T5AL	T5AL	--
EN	NORDIC COUNTRIES	QQT0400-002	QQT0253-002	T1.6AL	T1.6AL	T5AL	T5AL	--
EV	POLAND, HUNGARY	QQT0400-002	QQT0253-002	T1.6AL	T1.6AL	T5AL	T5AL	--
A	AUSTRALIA	QQT0400-003	QQT0253-002	T1.6AL	T1.6AL	T5AL	T5AL	--
UT	TAIWAN	QQT0400-004	QQT0253-001	T3.15AL	T1.6AL	B1602	B1601	--
UP	KOREA	QQT0400-005	QQT0253-003	T1.6AL	T1.6AL	T5AL	T5AL	--
UF	CHINA	QQT0400-005	QQT0253-003	T1.6AL	T1.6AL	T5AL	T5AL	--

▲ Parts are safety assurance parts. When replacing those parts make sure to use the specified one.

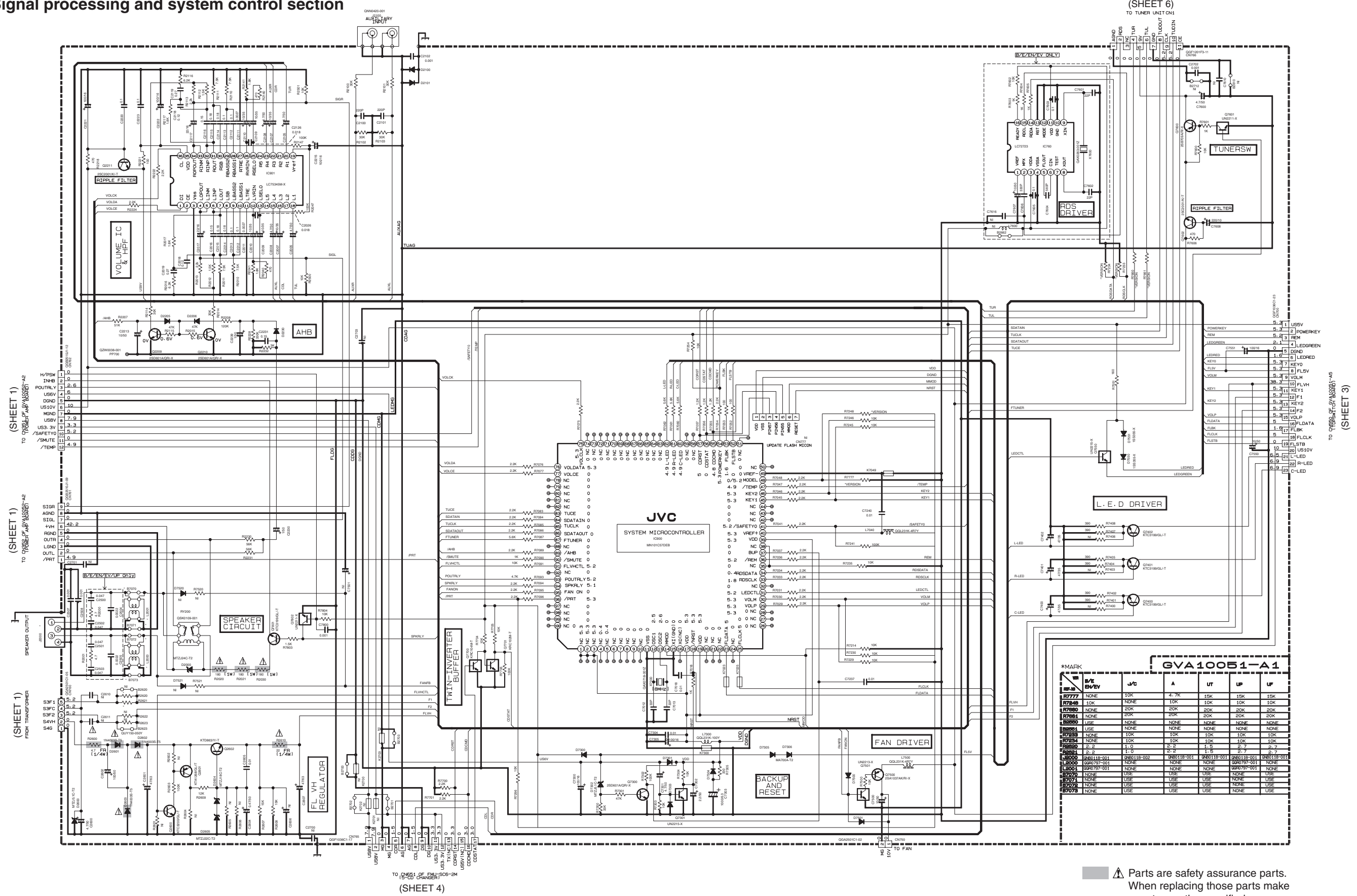
NOTES

1. VOLTAGES ARE DC-MEASURED WITH A DIGITAL VOLT METER OR OSCILLOSCOPE WITHOUT INPUT SIGNAL. CONDITION --- CD STOP MODE

2. UNLESS OTHERWISE SPECIFIED. ALL RESISTORS ARE 1/10W ± 5% METAL GLAZE RESISTOR. ALL CAPACITORS ARE CERAMIC CAPACITOR OR MYLAR CAPACITOR. ALL RESISTANCE VALUES ARE IN OHM (Ω). ALL CAPACITANCE VALUES ARE IN μF (P=PF).

ALL E-CAPACITORS ARE SHOWN IN THE FORM OF CAPACITANCE (μF/RATED VOLTAGE (V)). ALL INDUCTANCE VALUES ARE IN μH (m=mH). ALL DIODES ARE 1SS133-T2.

Signal processing and system control section



(SHEET 6)
TO TUNER UNIT CN1

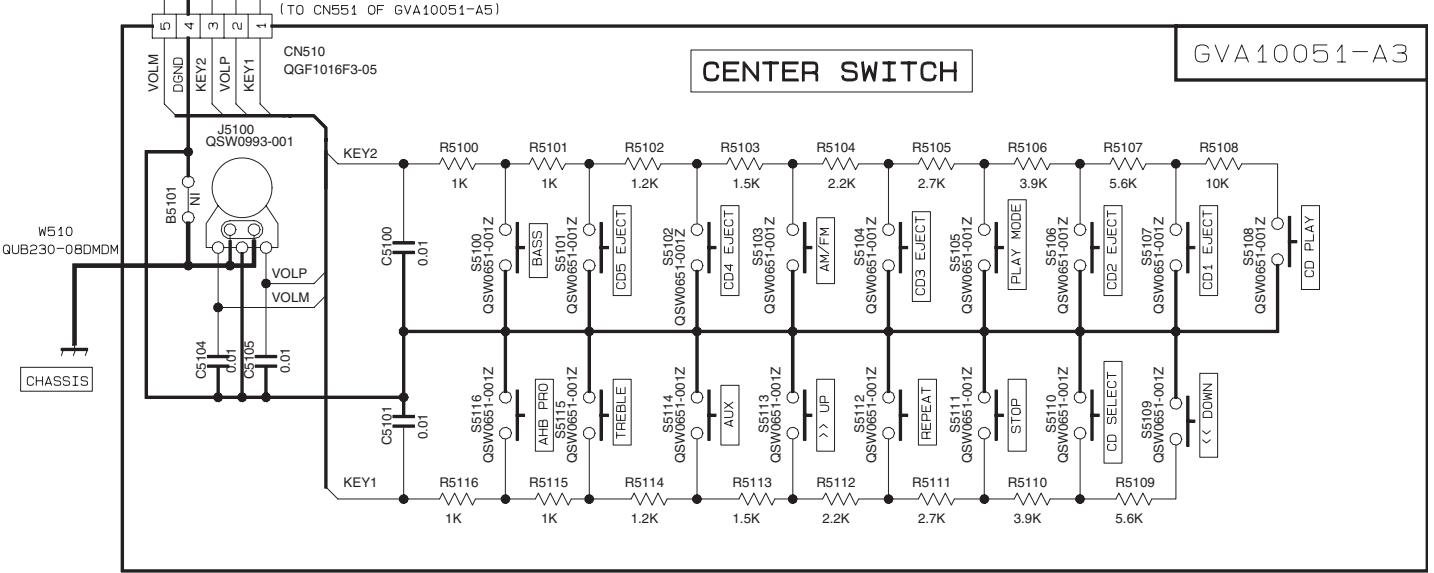
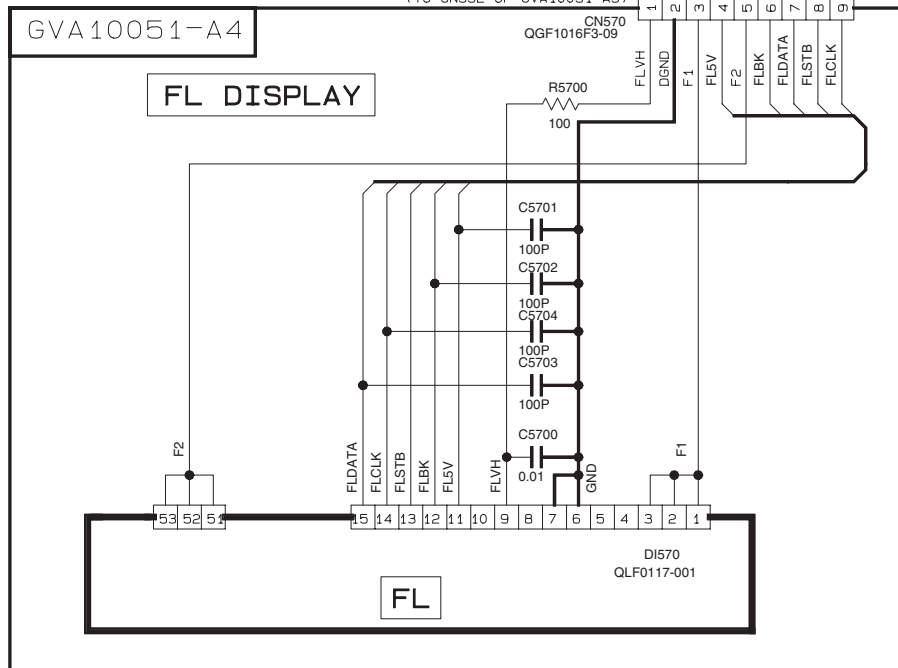
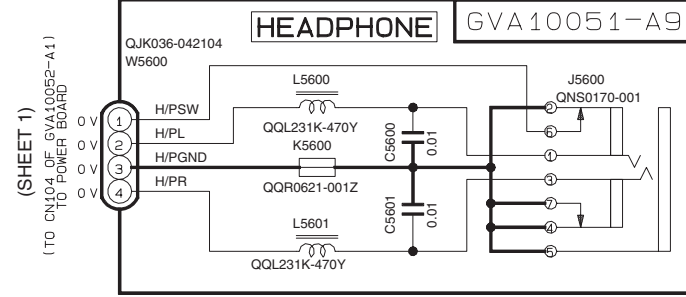
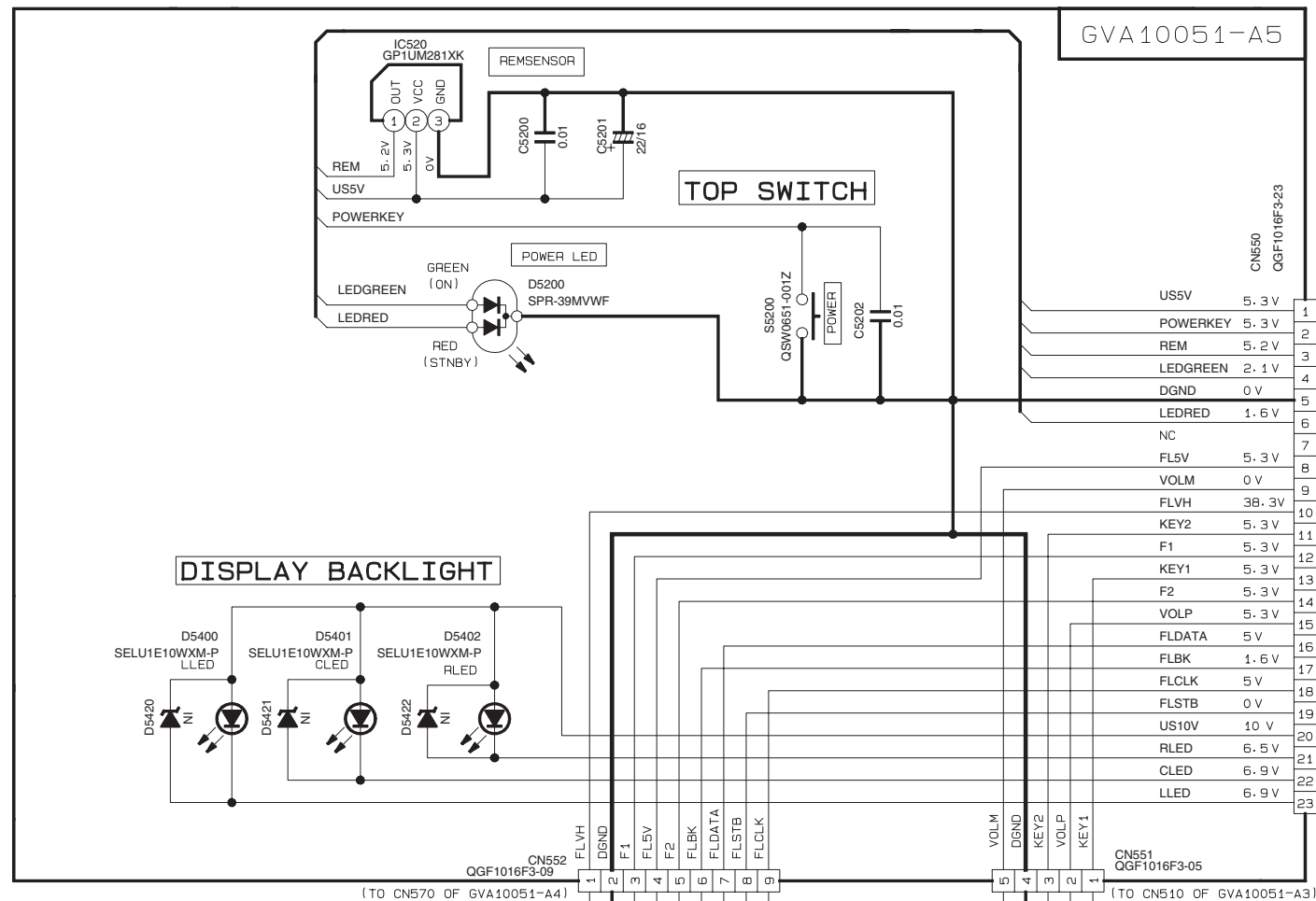
*MARK						
REF. NO.	B/E	VALUE	JVC	A	UF	UP
R7777	NONE	10K	4.7K	10K	10K	10K
R7749	10K	NONE	10K	10K	10K	10K
R7880	NONE	20K	20K	20K	20K	20K
R7884	NONE	20K	20K	20K	20K	20K
R8880	USE	NONE	NONE	NONE	NONE	NONE
R8884	USE	NONE	NONE	NONE	NONE	NONE
R7258	NONE	10K	10K	10K	10K	10K
R7254	NONE	10K	10K	10K	10K	10K
R8820	2.2	1.0	1.0	1.5	2.7	2.7
R8824	1.5	1.0	1.0	1.5	2.7	2.7
IC8000	UN8011B-001	UN8011B-002	UN8011B-001	UN8011B-001	UN8011B-001	UN8011B-001
IC8000	UN8011B-001	NONE	NONE	UN8011B-001	NONE	NONE
IC8004	UN8011B-001	NONE	NONE	UN8011B-001	NONE	NONE
IC8008	NONE	USE	USE	USE	NONE	USE
IC8010	NONE	USE	USE	USE	NONE	USE
IC8012	NONE	USE	USE	USE	NONE	USE
IC8014	NONE	USE	USE	USE	NONE	USE
IC8016	NONE	USE	USE	USE	NONE	USE
IC8018	NONE	USE	USE	USE	NONE	USE
IC8020	NONE	USE	USE	USE	NONE	USE

PIN NO.	1	2	3	4	5	6	7	8	9	10	11	12	13	14	15	16	17	18	19	20	21	22	23	24	25	26	27	28	29	30	31	32	33	34	35	36	
IC901	5.2	0	0	3.5	3.5	3.5	3.5	3.5	3.5	3.5	3.5	3.5	3.5	3.5	3.5	3.5	3.5	3.5	3.5	3.5	3.5	3.5	3.5	3.5	3.5	3.5	3.5	3.5	3.5	3.5	3.5	3.5	3.5	3.5	7	0	
IC760	2.6	5.2	5.2	0	2.6	2.6	0	2.6	2.6	0	5.2	0	0	0	0	5.2																					

NOTES
1. VOLTAGES ARE DC-MEASURED WITH A DIGITAL VOLT METER OR OSCILLOSCOPE WITHOUT INPUT SIGNAL. CONDITION --- CD STOP MODE
2. UNLESS OTHERWISE SPECIFIED
ALL RESISTORS ARE 1/4W ± 5% CARBON FILM RESISTOR OR 0.053W ± 5% THICK FILM CHIP RESISTOR
ALL CAPACITORS ARE CERAMIC CAPACITOR OR MYLAR CAPACITOR.
ALL RESISTANCE VALUES ARE IN OHM(Ω). ALL CAPACITANCE VALUES ARE IN F(PpF). ALL E. CAPACITORS ARE SHOWN IN THE FORM OF CAPACITANCE (A/F/RATED VOLTAGE (V)). ALL INDUCTANCE VALUES ARE IN μH(MPHH). ALL DIODES ARE 1SS119-041-T2 ALL FERRITE BEADS ARE 09R0621-001Z

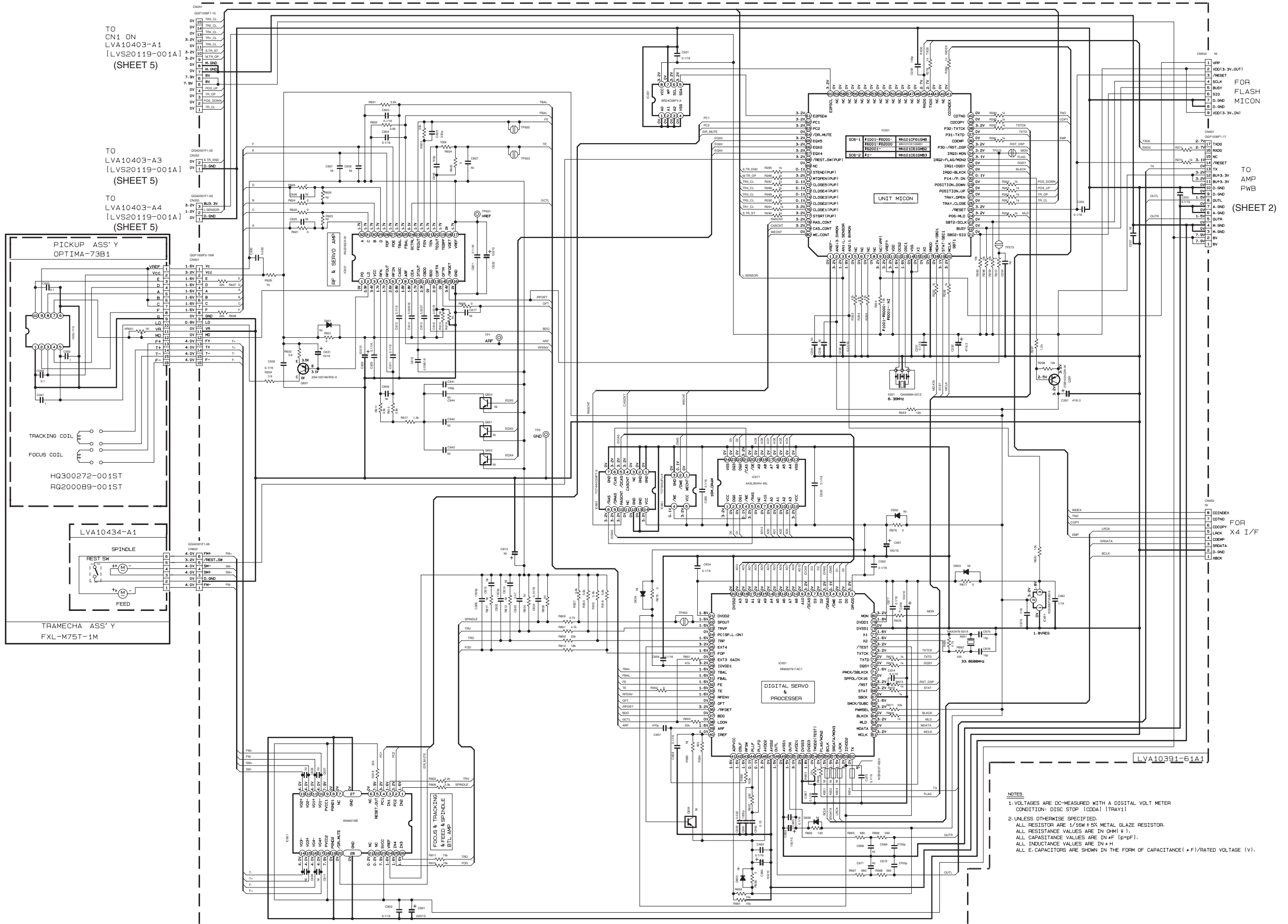
Parts are safety assurance parts. When replacing those parts make sure to use the specified one.

■ FL display / Users key control / Source selector switch section



TO MICRON BOARD
(TO CN700 OF GVA10051-A1)
(SHEET 2)

CD servo and CD system control section



TO CN1 ON LVA10403-A1 [LVS20119-001A] (SHEET 5)

TO LVA10403-A3 [LVS20119-001A] (SHEET 5)

TO LVA10403-A4 [LVS20119-001A] (SHEET 5)

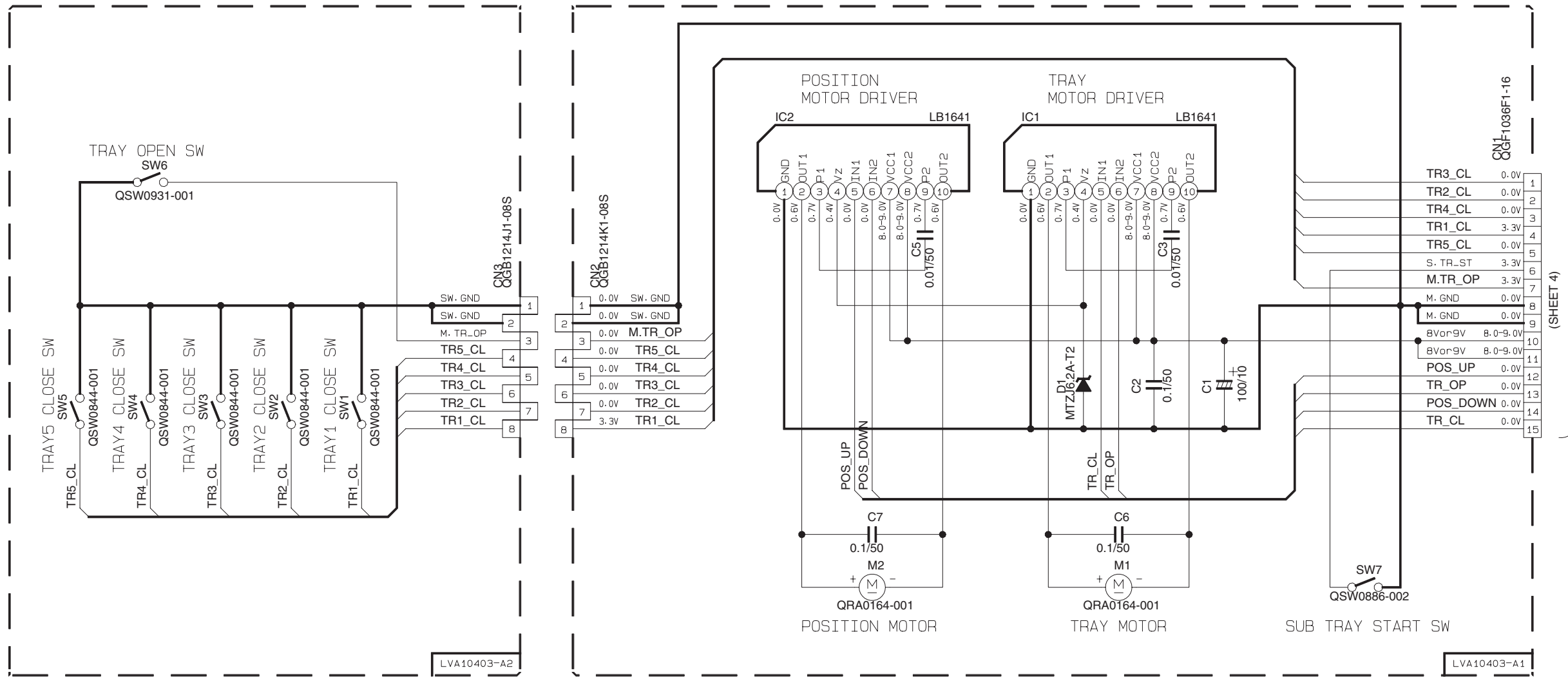
FOR FLASH MICON

TO AMP PWB (SHEET 2)

FOR X4 I/F

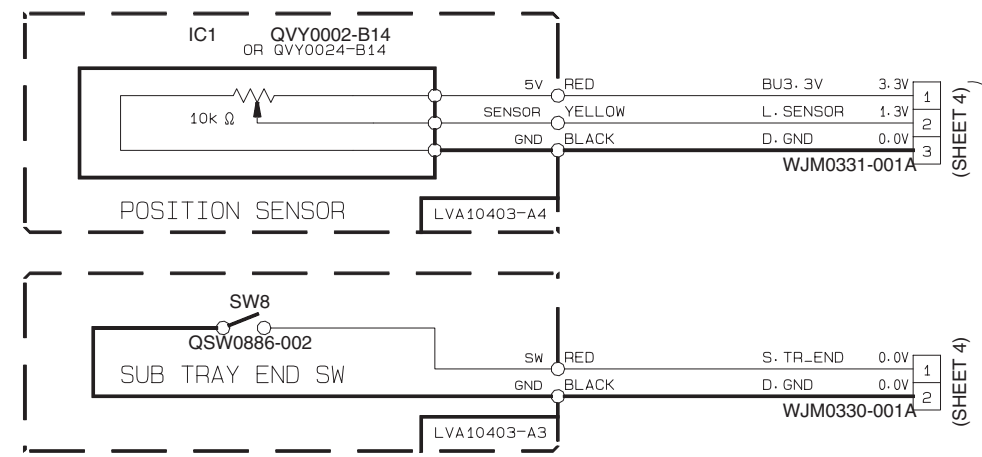
- NOTES
1. VOLTAGES ARE DC-MEASURED WITH A DIGITAL VOLT METER CONDITION: DISC STOP (CDA) [TRAY1]
 2. UNLESS OTHERWISE SPECIFIED, ALL RESISTOR ARE 1/16W ± 5% METAL GLAZE RESISTOR. ALL RESISTANCE VALUES ARE IN OHM (Ω). ALL CAPACITANCE VALUES ARE IN nF [p+PF]. ALL INDUCTANCE VALUES ARE IN μH. ALL CAPACITORS ARE SHOWN IN THE FORM OF CAPACITANCE (μF)/RATED VOLTAGE (V).

CD tray control section



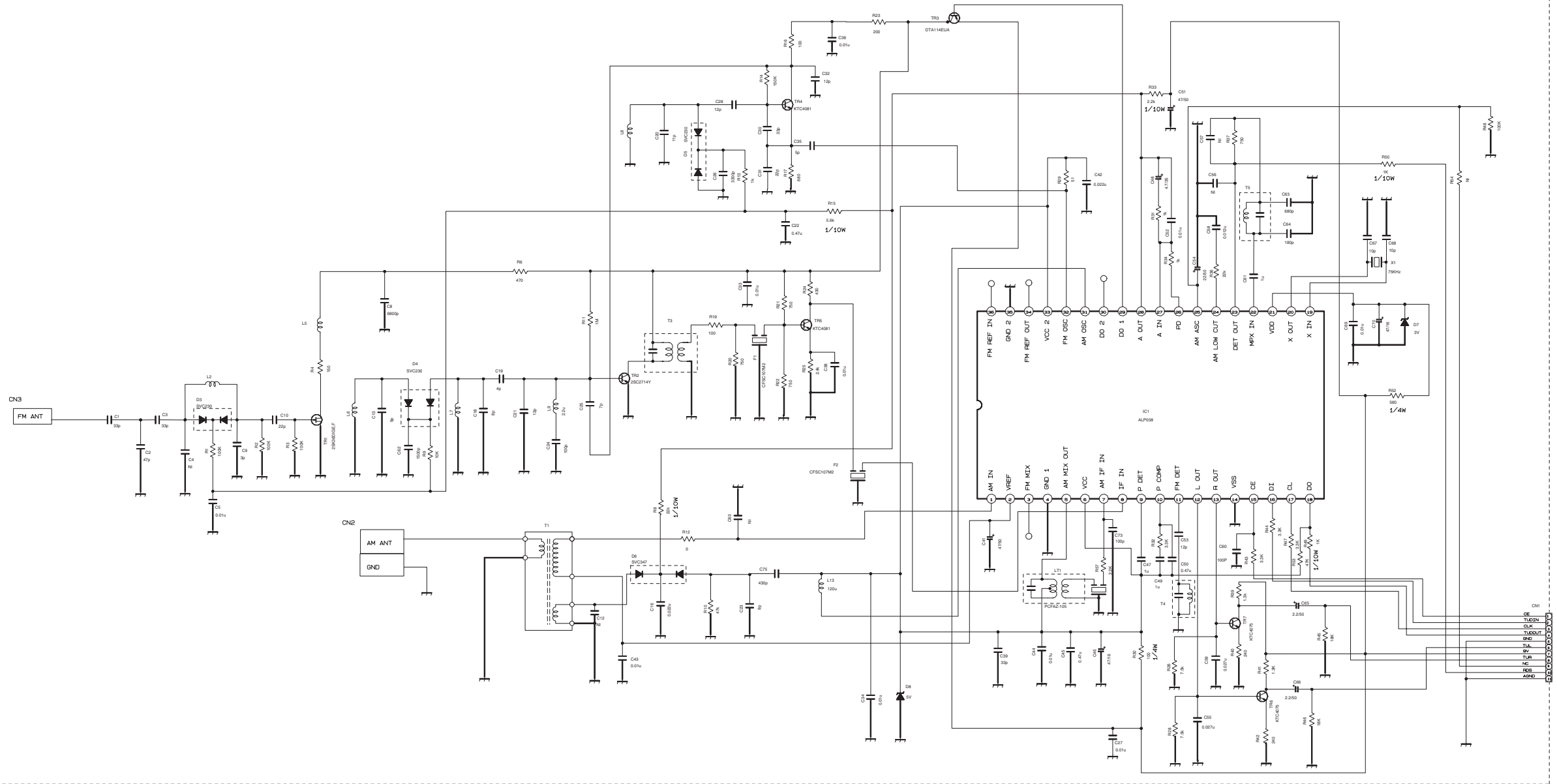
NOTES

1. VOLTAGES ARE DC-MEASURED WITH A DIGITAL VOLT METER. CONDITION: DISC1 STOP
2. UNLESS OTHERWISE SPECIFIED. ALL CAPACITORS ARE SHOWN IN THE FORM OF CAPACITANCE (μF)/RATED VOLTAGE (V).



TO POWER AND MECHA CONTROL MTCOM

QAU0347-001



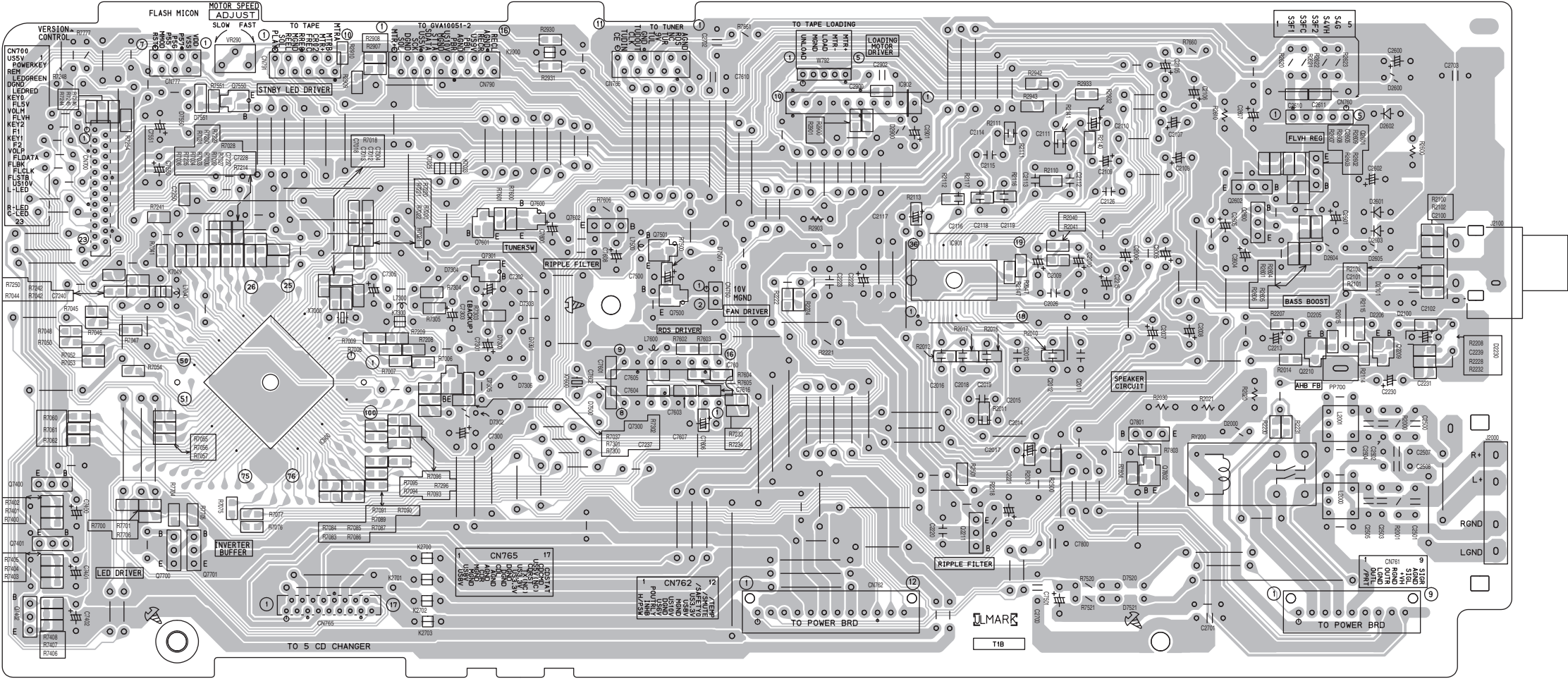
NOTES
 2- UNLESS OTHERWISE SPECIFIED
 ALL RESISTANCE VALUES ARE IN OHMS.
 ALL CAPACITANCE VALUES ARE IN pF(10⁻¹²).
 ALL INDUCTANCE VALUES ARE IN μH(10⁻⁶).
 ALL ELECTROLYTIC CAPACITORS ARE SHOWN IN THE FORM OF CAPACITANCE (μF)/RATED VOLTAGE (V).

(SHEET 2)

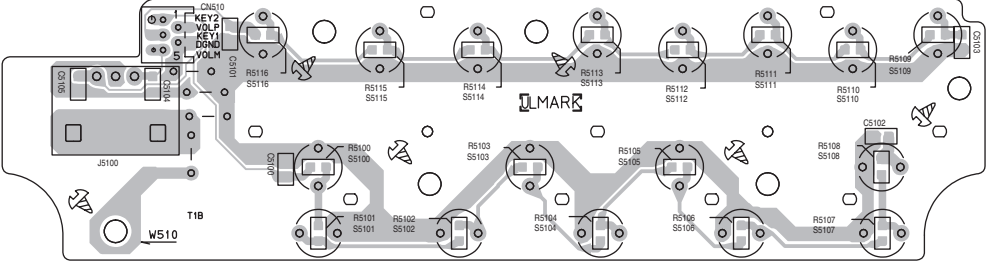
Printed circuit boards

■ Micon board

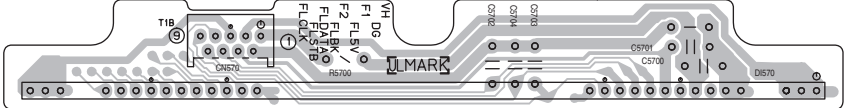
(Micon board)



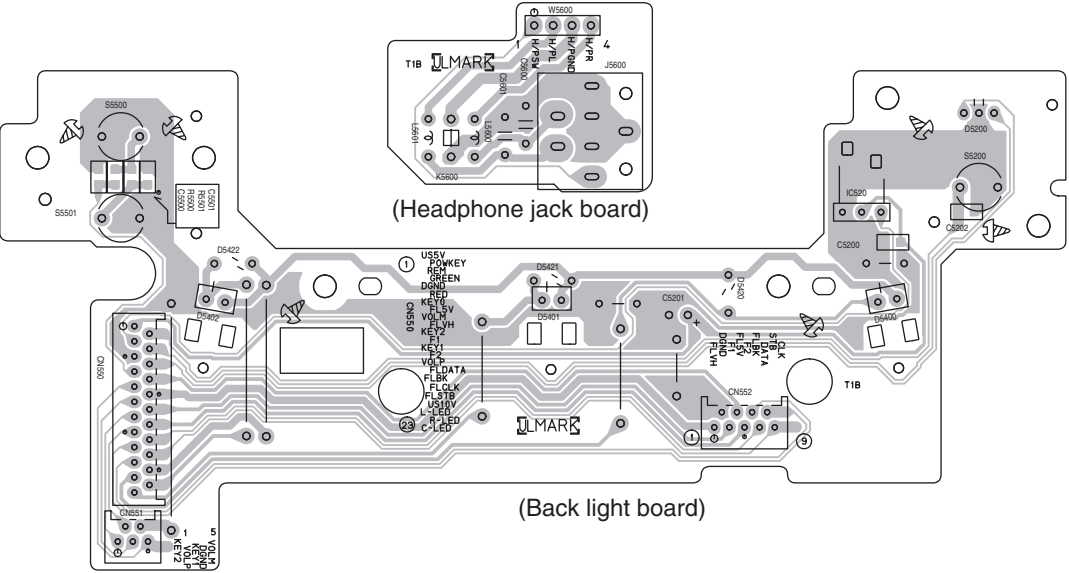
(Switch board)



(FL board)



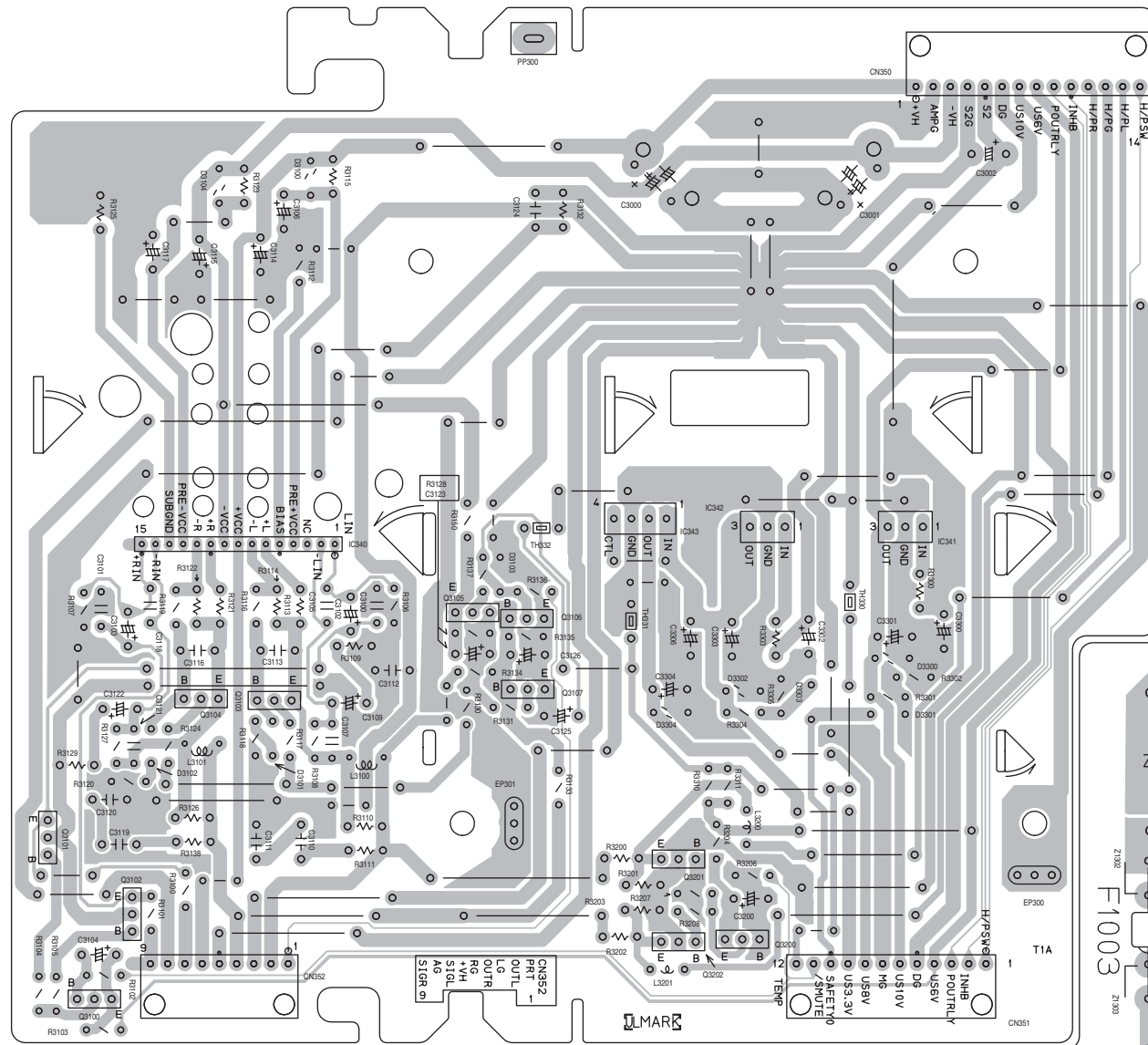
(Headphone jack board)



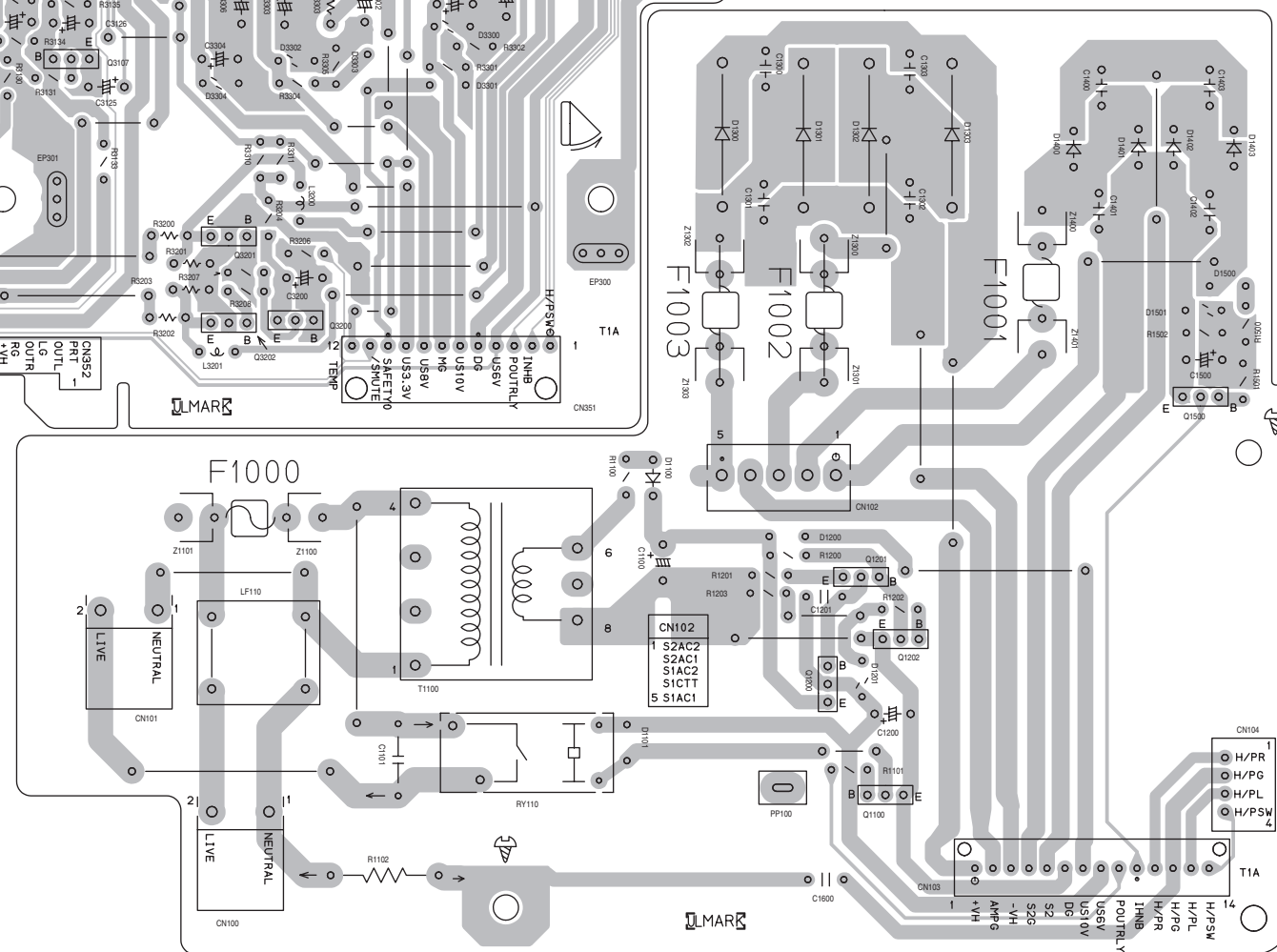
(Back light board)

■ Power board

(Power amplifier board)

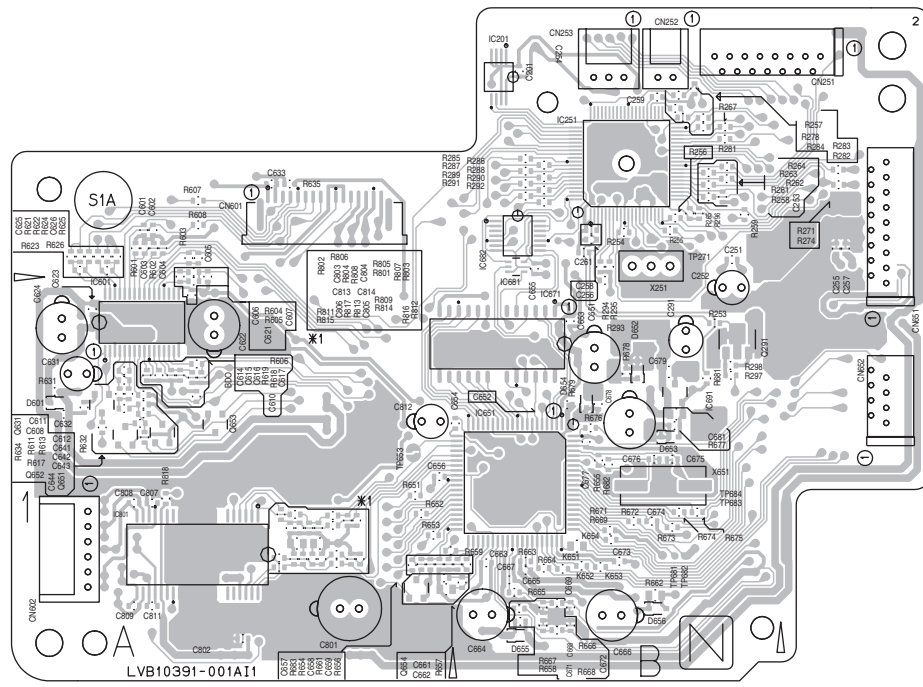


(Power supply board)

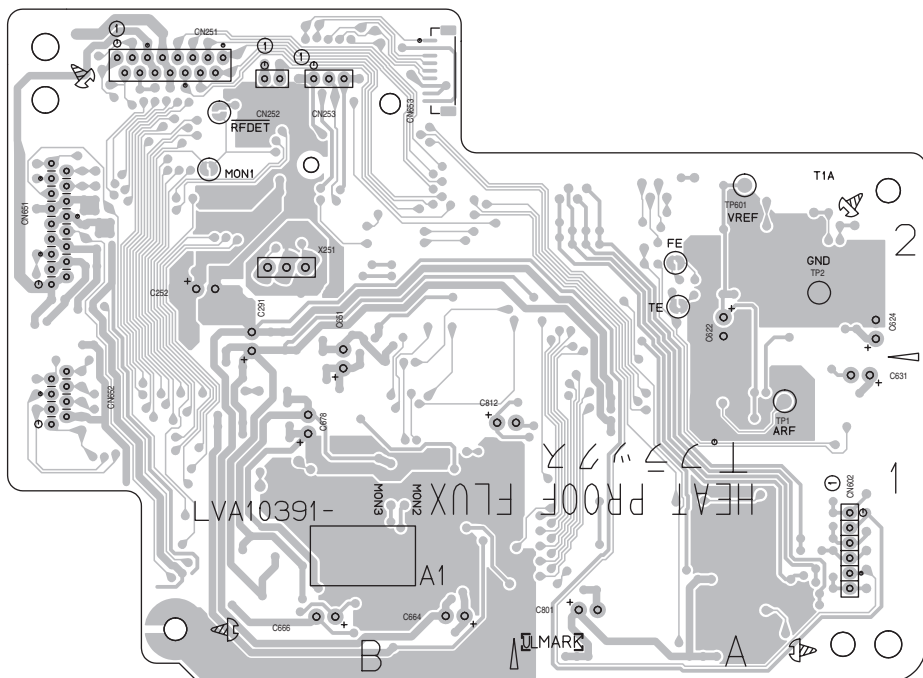


■ CD servo board

(Forward side)

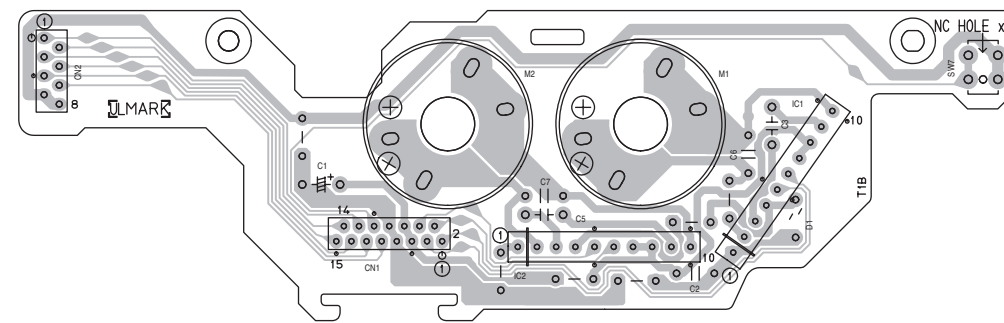


(Reverse side)

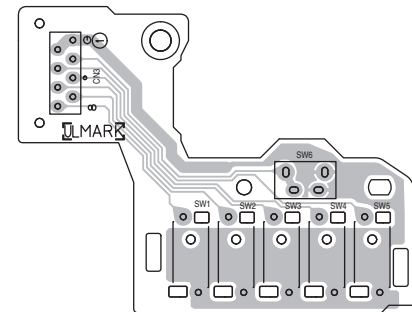


■ Loading switch board

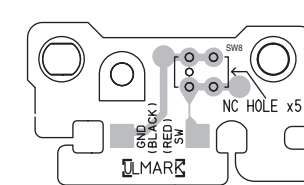
(Motor board)



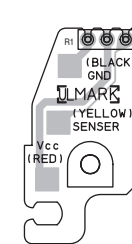
(Tray switch board)



(Switch board)



(Sensor board)



< MEMO >

JVC

VICTOR COMPANY OF JAPAN, LIMITED

AV & MULTIMEDIA COMPANY AUDIO/VIDEO SYSTEMS CATEGORY 10-1, 1chome, Ohwatari-machi, Maebashi-city, 371-8543, Japan

(No.MB211SCH)



Printed in Japan
WPC

JVC

SCHEMATIC DIAGRAMS

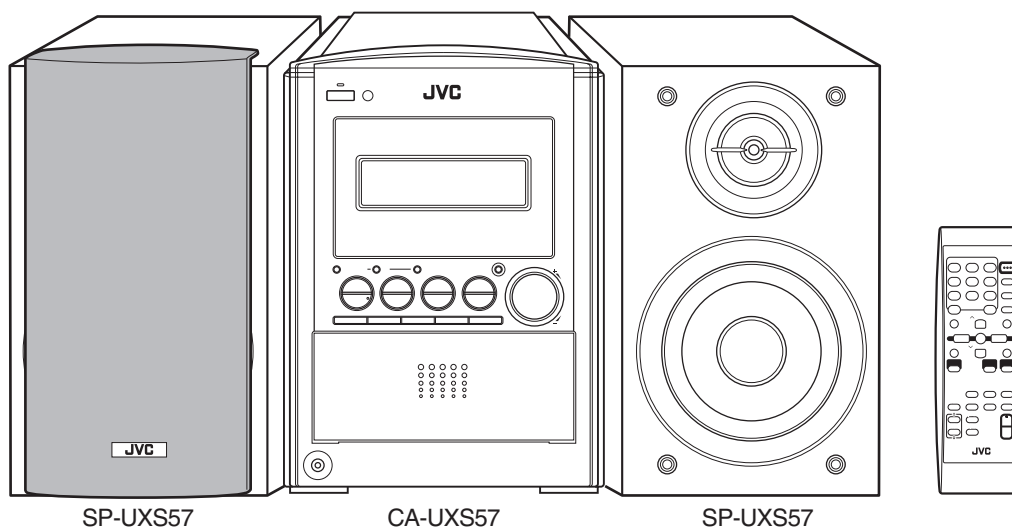
MICRO COMPONENT SYSTEM

UX-S57

CD-ROM No.SML200405

Area suffix

A ----- Australia
B ----- U.K.
E ----- Continental Europe
EN ----- Northern Europe
EV ----- Eastern Europe



COMPACT
disc
DIGITAL AUDIO

CD R-D-S

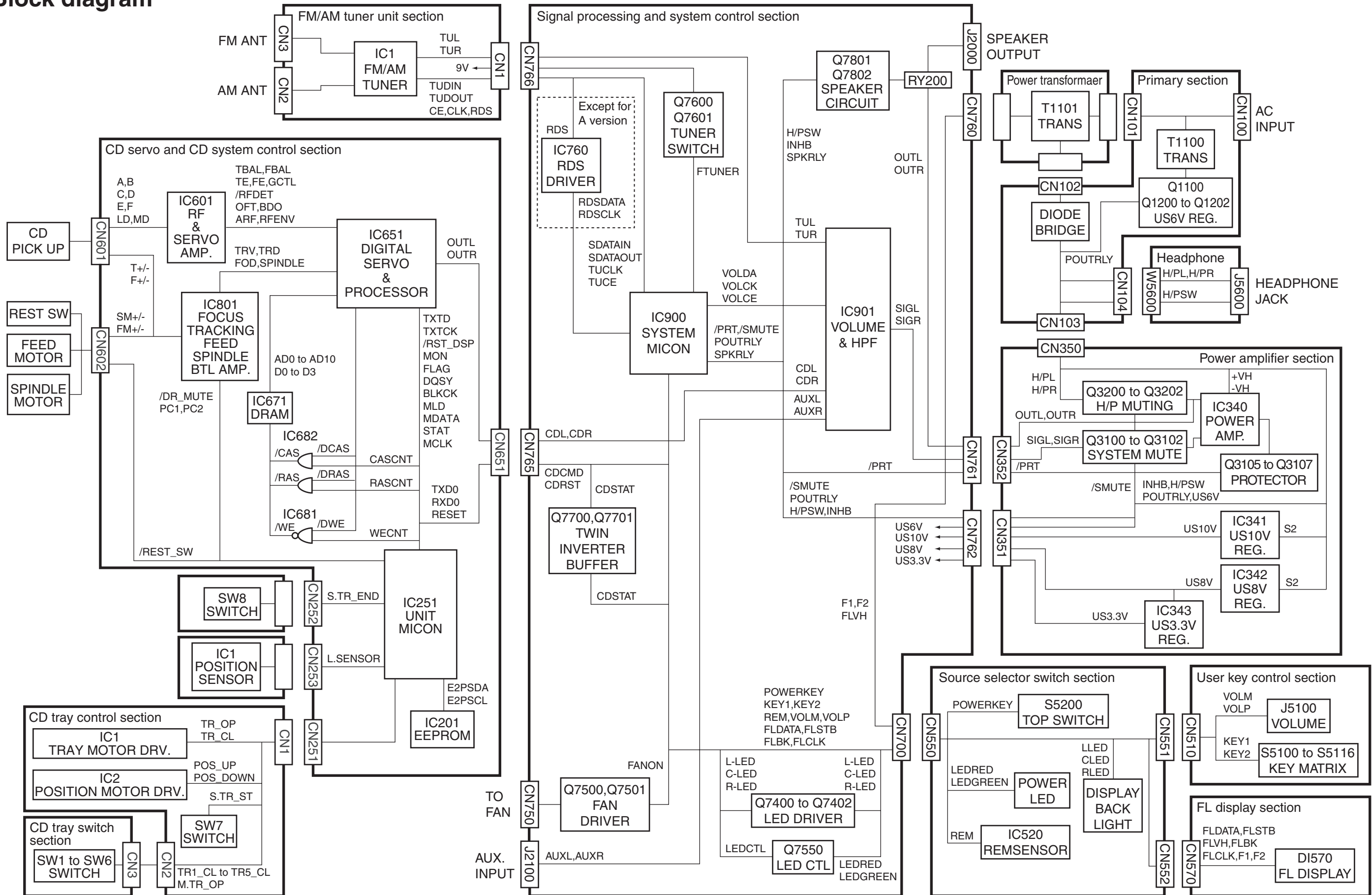
Contents

Block diagram	2-1
Standard schematic diagrams	2-2
Printed circuit boards	2-8 to 10

In regard with component parts appearing on the silk-screen printed side (parts side) of the PWB diagrams, the parts that are printed over with black such as the resistor (■), diode (▬) and ICP (●) or identified by the "▲" mark nearby are critical for safety.

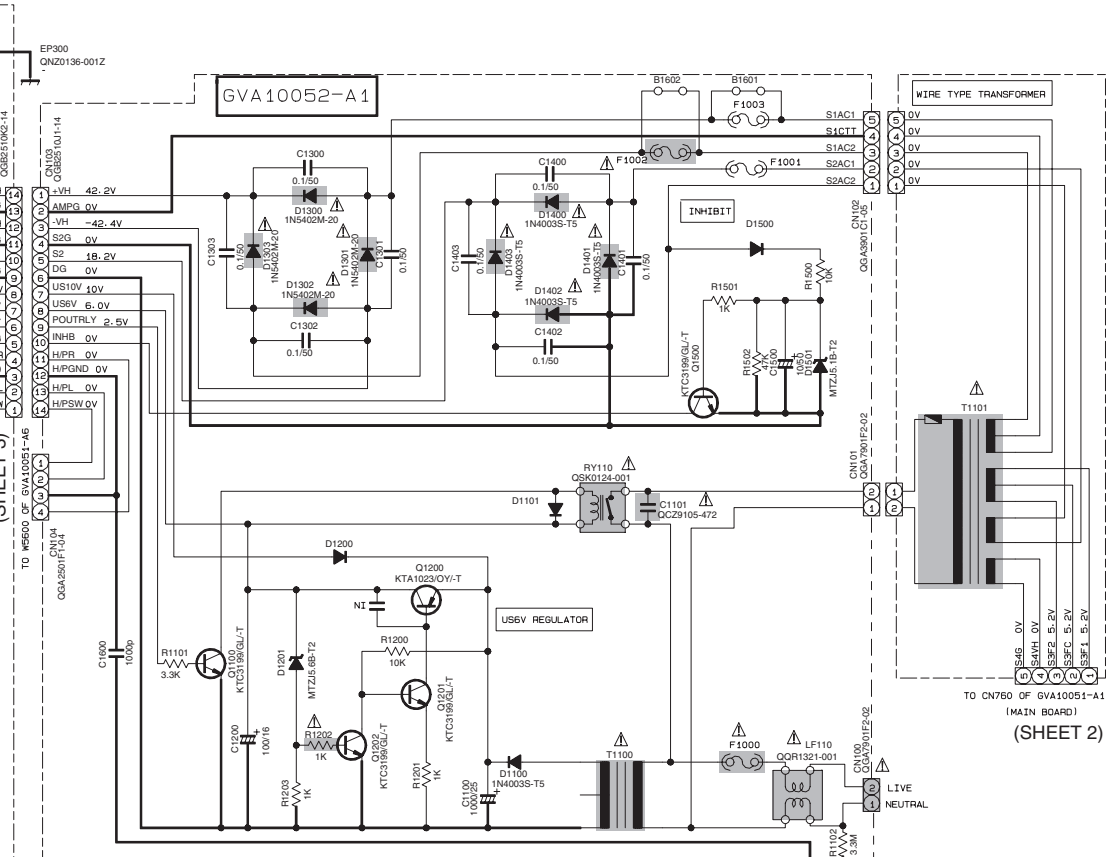
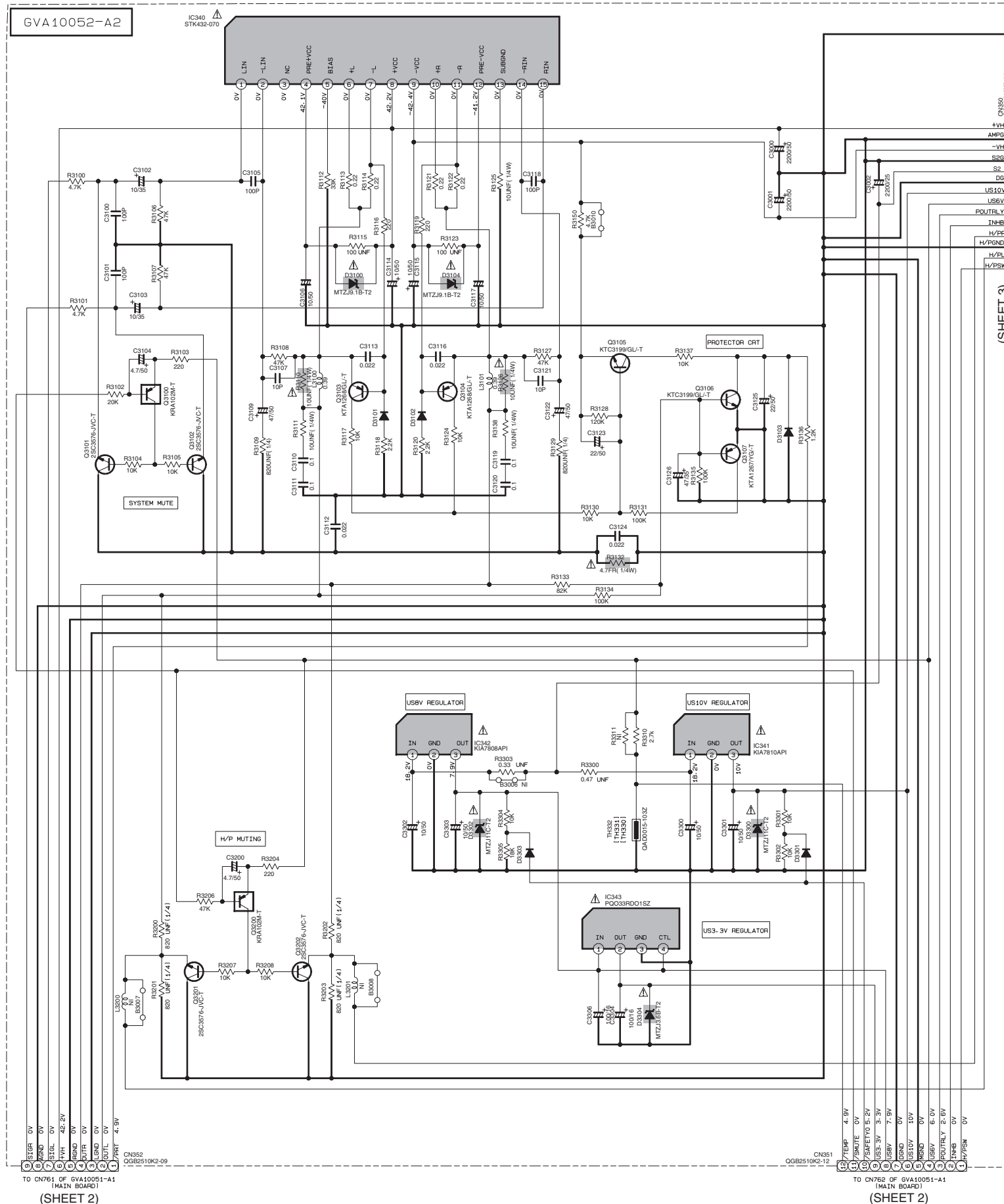
(This regulation does not correspond to J and C version.)

Block diagram



Standard schematic diagrams

Primary and power amplifier section



EXPLANATION OF OVERALL OF SCHEMATIC

MODEL : FS/UX-S57

SHEET NUMBER	MODEL NUMBERS TO BE APPLIED	CIRCUITS DESCRIPTION
1	FS/UX-S57	* PRIMARY AND POWER AMP
2	FS/UX-S57	* SIGNAL PROCESSING AND SYSTEM CONTROL
3	FS/UX-S57	* FL DISPLAY/USERS KEY CONTROL/SOURCE SELECTOR SWITCH
4	FS/UX-S57	* CD SERVO AND CD SYSTEM CONTROL
5	FS/UX-S57	* CD TRAY CONTROL
6	FS/UX-S57	* FM/AM TUNER UNIT (B/E/ENEV/UP/A)

VERSION	COUNTRY	T1101	T1100	F1000	F1001	F1002	F1003	R1102
J	USA	QQT0400-001	QQT0253-012	2.5A-125V	1.6A-125V	B1602	B1601	3.3M
C	CANADA	QQT0400-001	QQT0253-012	2.5A-125V	1.6A-125V	B1602	B1601	3.3M
B	U.K	QQT0400-002	QQT0253-002	T1.6AL	T1.6AL	T5AL	T5AL	--
E	CONTINENTAL EUROPE	QQT0400-002	QQT0253-002	T1.6AL	T1.6AL	T5AL	T5AL	--
EN	NORDIC COUNTRIES	QQT0400-002	QQT0253-002	T1.6AL	T1.6AL	T5AL	T5AL	--
EV	POLAND, HUNGARY	QQT0400-002	QQT0253-002	T1.6AL	T1.6AL	T5AL	T5AL	--
A	AUSTRALIA	QQT0400-003	QQT0253-002	T1.6AL	T1.6AL	T5AL	T5AL	--
UT	TAIWAN	QQT0400-004	QQT0253-001	T3.15AL	T1.6AL	B1602	B1601	--
UP	KOREA	QQT0400-005	QQT0253-003	T1.6AL	T1.6AL	T5AL	T5AL	--
UF	CHINA	QQT0400-005	QQT0253-003	T1.6AL	T1.6AL	T5AL	T5AL	--

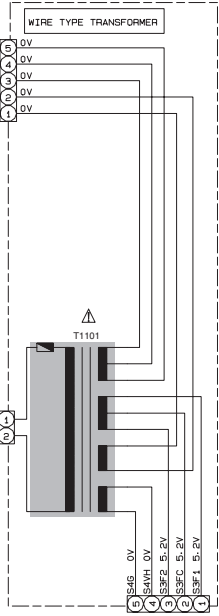
▲ Parts are safety assurance parts. When replacing those parts make sure to use the specified one.

NOTES

1. VOLTAGES ARE DC-MEASURED WITH A DIGITAL VOLT METER OR OSCILLOSCOPE WITHOUT INPUT SIGNAL. CONDITION --- CD STOP MODE

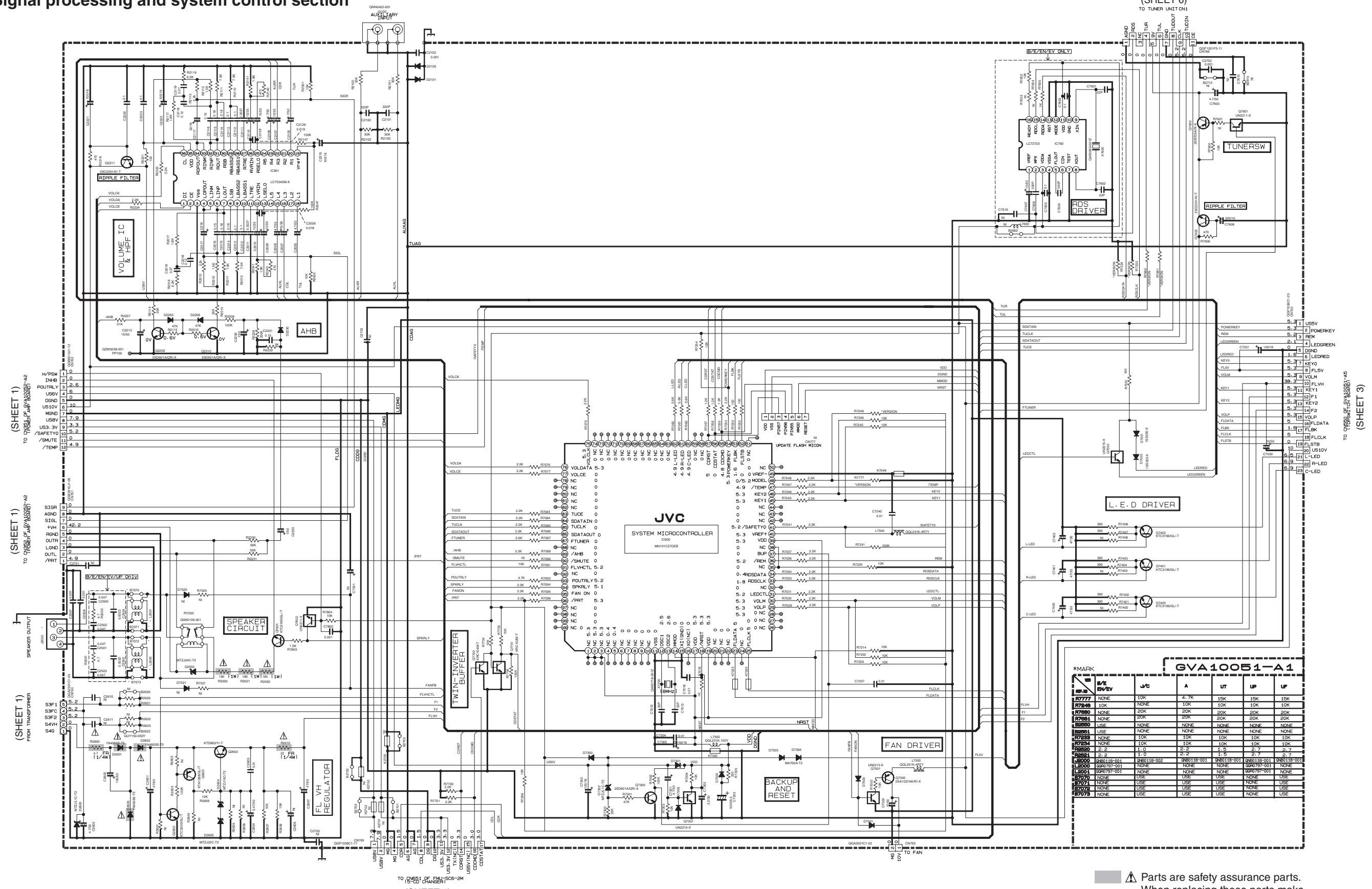
2. UNLESS OTHERWISE SPECIFIED. ALL RESISTORS ARE 1/10W ± 5% METAL GLAZE RESISTOR. ALL CAPACITORS ARE CERAMIC CAPACITOR OR MYLAR CAPACITOR. ALL RESISTANCE VALUES ARE IN OHM (Ω). ALL CAPACITANCE VALUES ARE IN μF (P=PF).

ALL E-CAPACITORS ARE SHOWN IN THE FORM OF CAPACITANCE (μF/RATED VOLTAGE (V)). ALL INDUCTANCE VALUES ARE IN μH (m=mH). ALL DIODES ARE 1SS133-T2.



(SHEET 2)

Signal processing and system control section



***MARK**

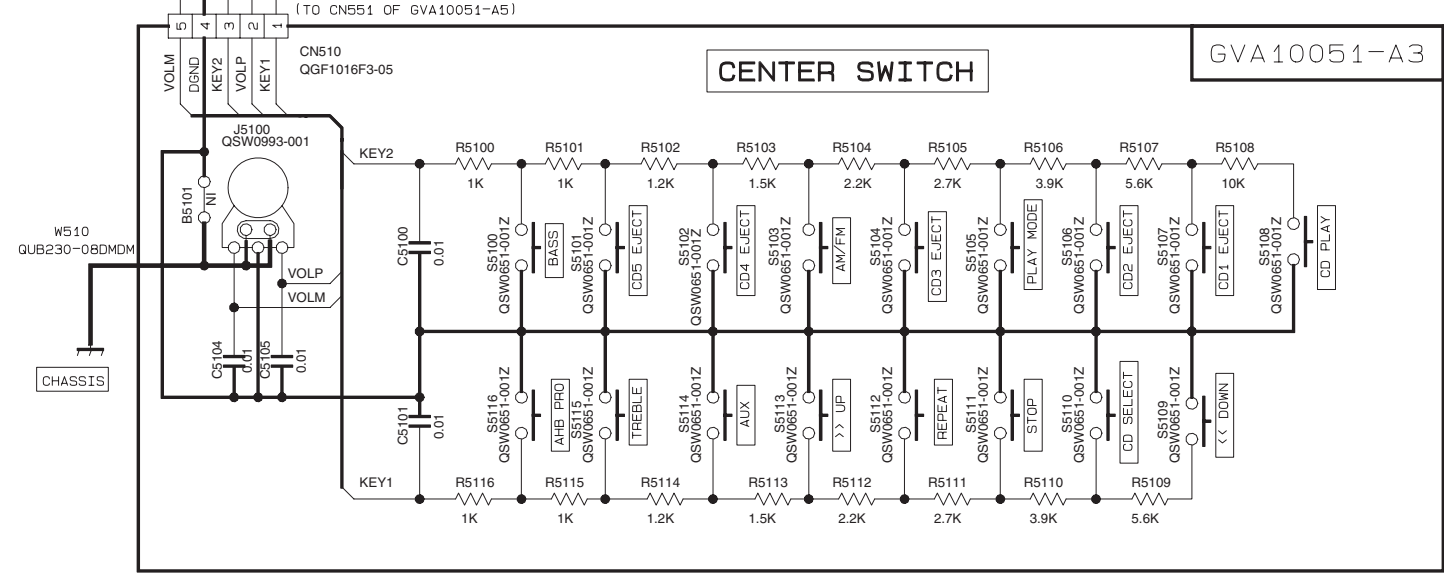
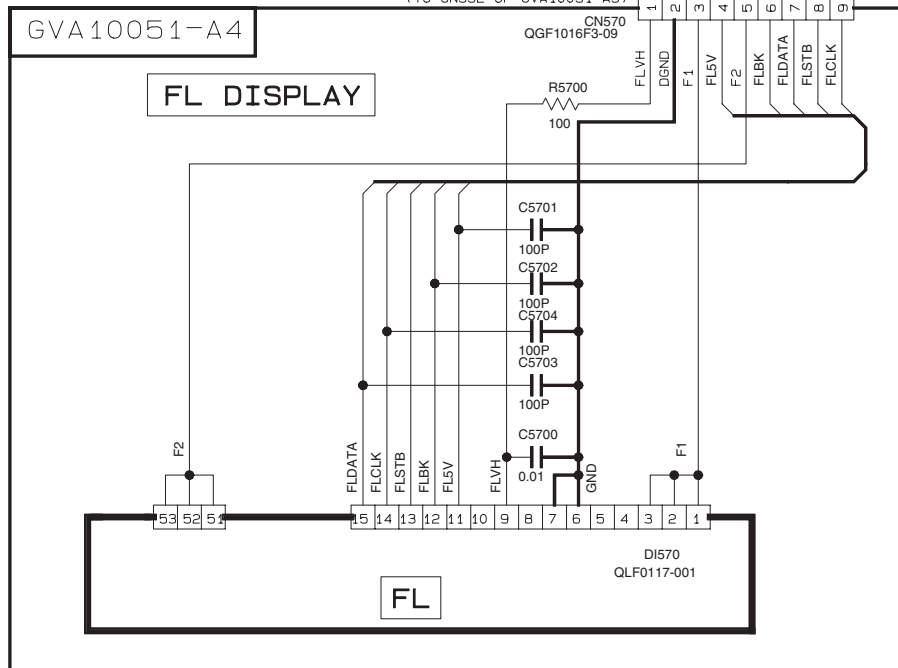
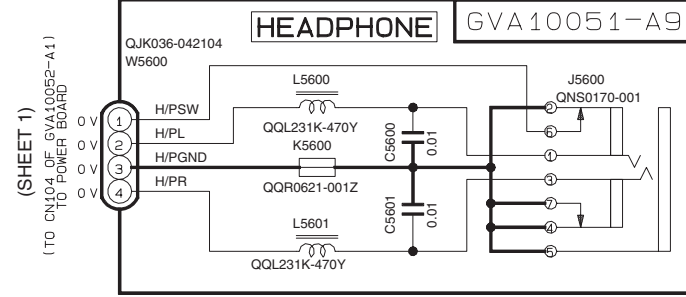
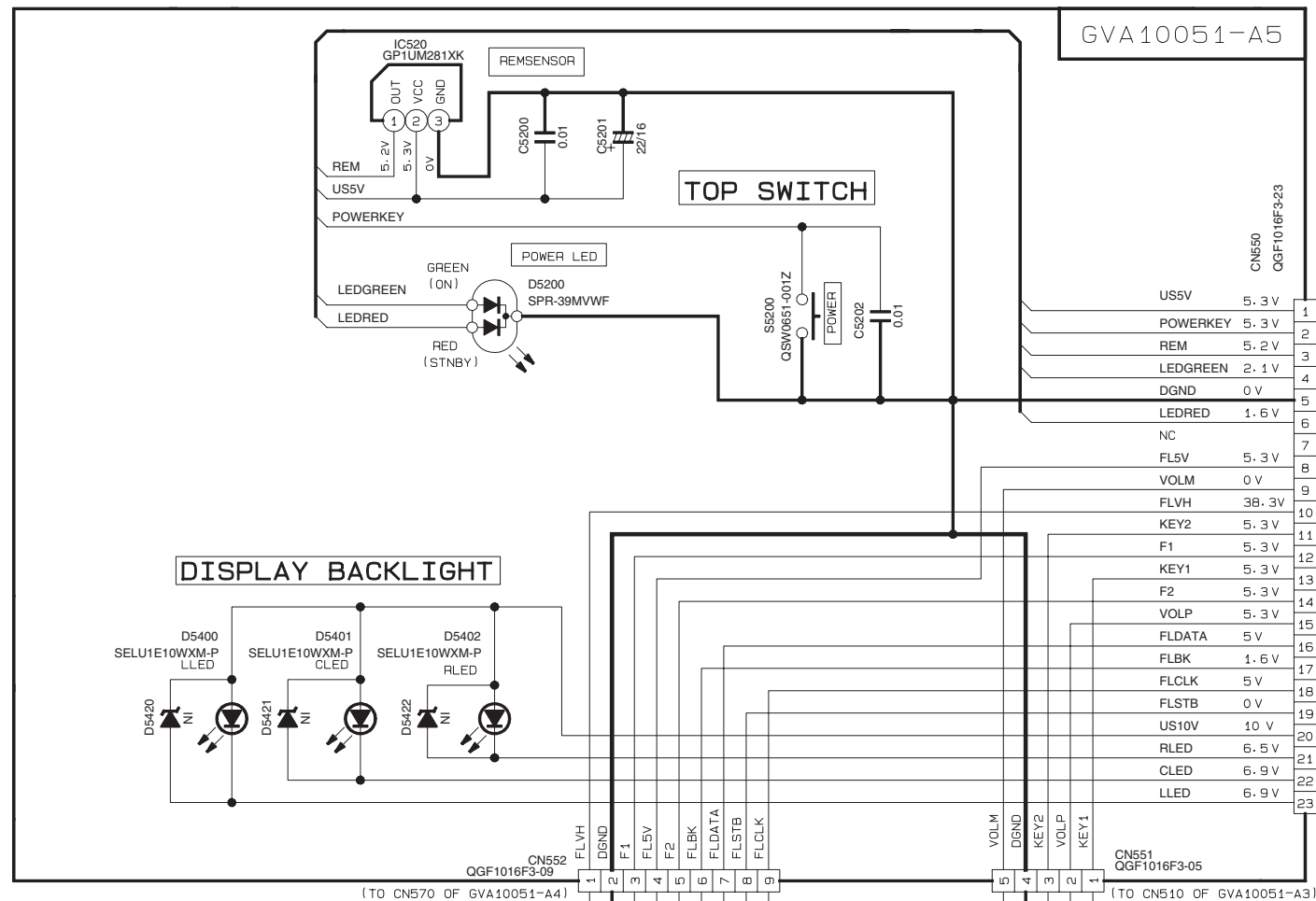
REF ID	B/E	VALUE	JVC	A	UF	UP	UF
R7777	NONE	10K	4.7K	10K	10K	10K	10K
R7749	10K	NONE	10K	10K	10K	10K	10K
R7880	NONE	20K	20K	20K	20K	20K	20K
R7884	NONE	20K	20K	20K	20K	20K	20K
R8880	USE	NONE	NONE	NONE	NONE	NONE	NONE
R8884	USE	NONE	NONE	NONE	NONE	NONE	NONE
R7234	NONE	10K	10K	10K	10K	10K	10K
R8880	2.2	1.0	1.0	1.5	2.7	2.7	2.7
R8884	1.5	1.0	1.0	1.5	1.5	1.5	1.5
L8800	0N80118-001	0N80118-002	0N80118-001	0N80118-001	0N80118-001	0N80118-001	0N80118-001
L8800	0N80787-001	NONE	NONE	NONE	0N80787-001	NONE	NONE
L8804	0N80787-001	NONE	NONE	NONE	0N80787-001	NONE	NONE
R7070	USE	USE	USE	USE	USE	USE	USE
R7074	USE	USE	USE	USE	USE	USE	USE
R7078	USE	USE	USE	USE	USE	USE	USE
R7078	USE	USE	USE	USE	USE	USE	USE

PIN NO.	1	2	3	4	5	6	7	8	9	10	11	12	13	14	15	16	17	18	19	20	21	22	23	24	25	26	27	28	29	30	31	32	33	34	35	36		
IC901	5.2	0	0	3.5	3.5	3.5	3.5	3.5	3.5	3.5	3.5	3.5	3.5	3.5	3.5	3.5	3.5	3.5	3.5	3.5	3.5	3.5	3.5	3.5	3.5	3.5	3.5	3.5	3.5	3.5	3.5	3.5	3.5	3.5	3.5	7	0	
IC760	2.6	5.2	5.2	0	2.6	2.6	0	2.6	2.6	0	5.2	0	0	0	0	0	0	0	0	0	0	0	0	0	0	0	0	0	0	0	0	0	0	0	0	0	0	0

NOTES
 1. VOLTAGES ARE DC-MEASURED WITH A DIGITAL VOLT METER OR OSCILLOSCOPE WITHOUT INPUT SIGNAL. CONDITION --- CD STOP MODE.
 2. UNLESS OTHERWISE SPECIFIED.
 ALL RESISTORS ARE 1/4W ± 5% CARBON FILM RESISTOR OR 0.053W ± 5% THICK FILM CHIP RESISTOR.
 ALL CAPACITORS ARE CERAMIC CAPACITOR OR MYLAR CAPACITOR.
 ALL RESISTANCE VALUES ARE IN OHM(Ω). ALL CAPACITANCE VALUES ARE IN F(PμF). ALL E. CAPACITORS ARE SHOWN IN THE FORM OF CAPACITANCE (μF)/RATED VOLTAGE (V). ALL INDUCTANCE VALUES ARE IN μH(mH). ALL DIODES ARE 1SS119-041-T2. ALL FERRITE BEADS ARE 0GRO621-001Z.

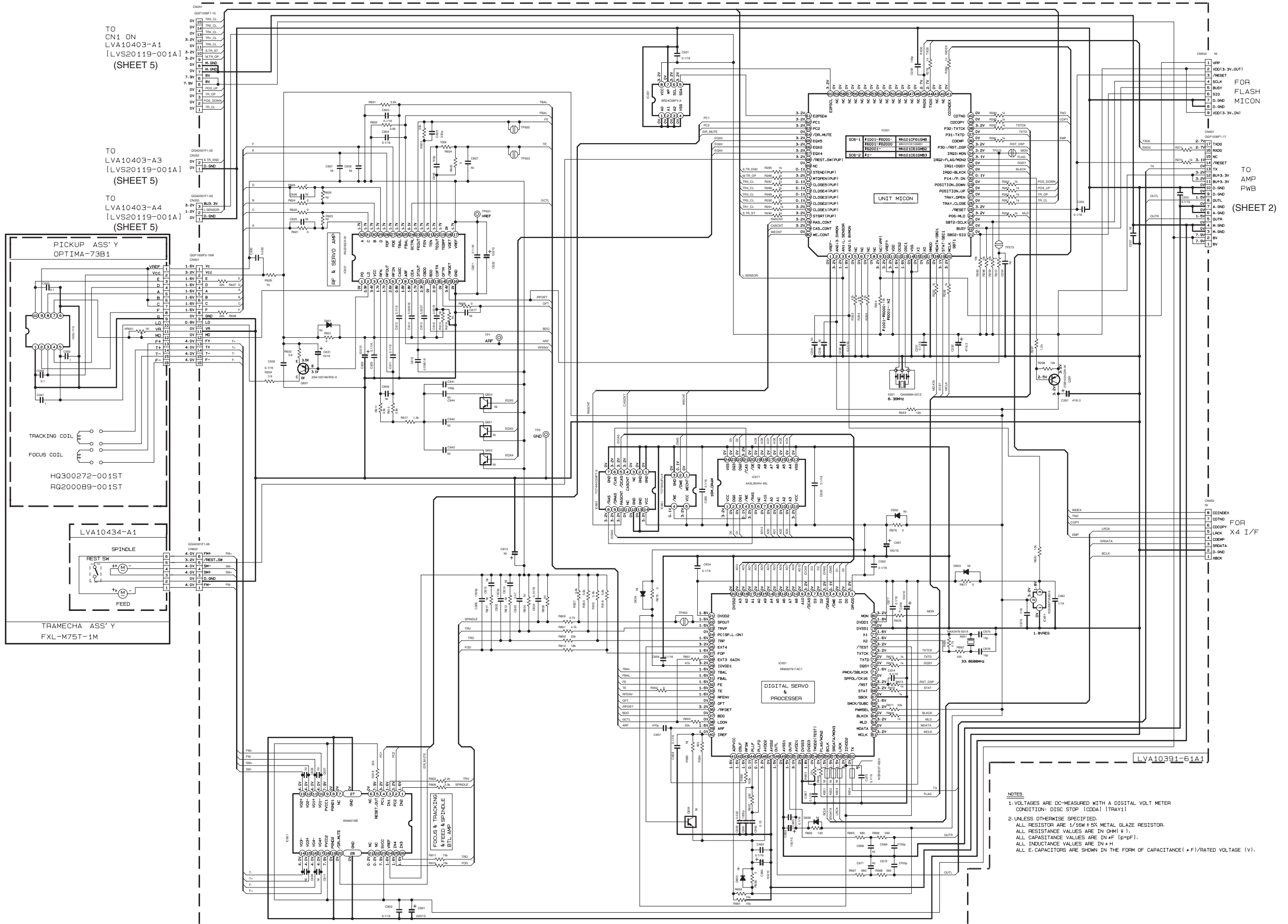
⚠ Parts are safety assurance parts. When replacing those parts make sure to use the specified one.

■ FL display / Users key control / Source selector switch section



TO MICRON BOARD
(TO CN700 OF GVA10051-A1)
(SHEET 2)

CD servo and CD system control section



TO
CN1 ON
LVA10403-A1
[LVS20119-001A]
(SHEET 5)

TO
LVA10403-A3
[LVS20119-001A]
(SHEET 5)

TO
LVA10403-A4
[LVS20119-001A]
(SHEET 5)

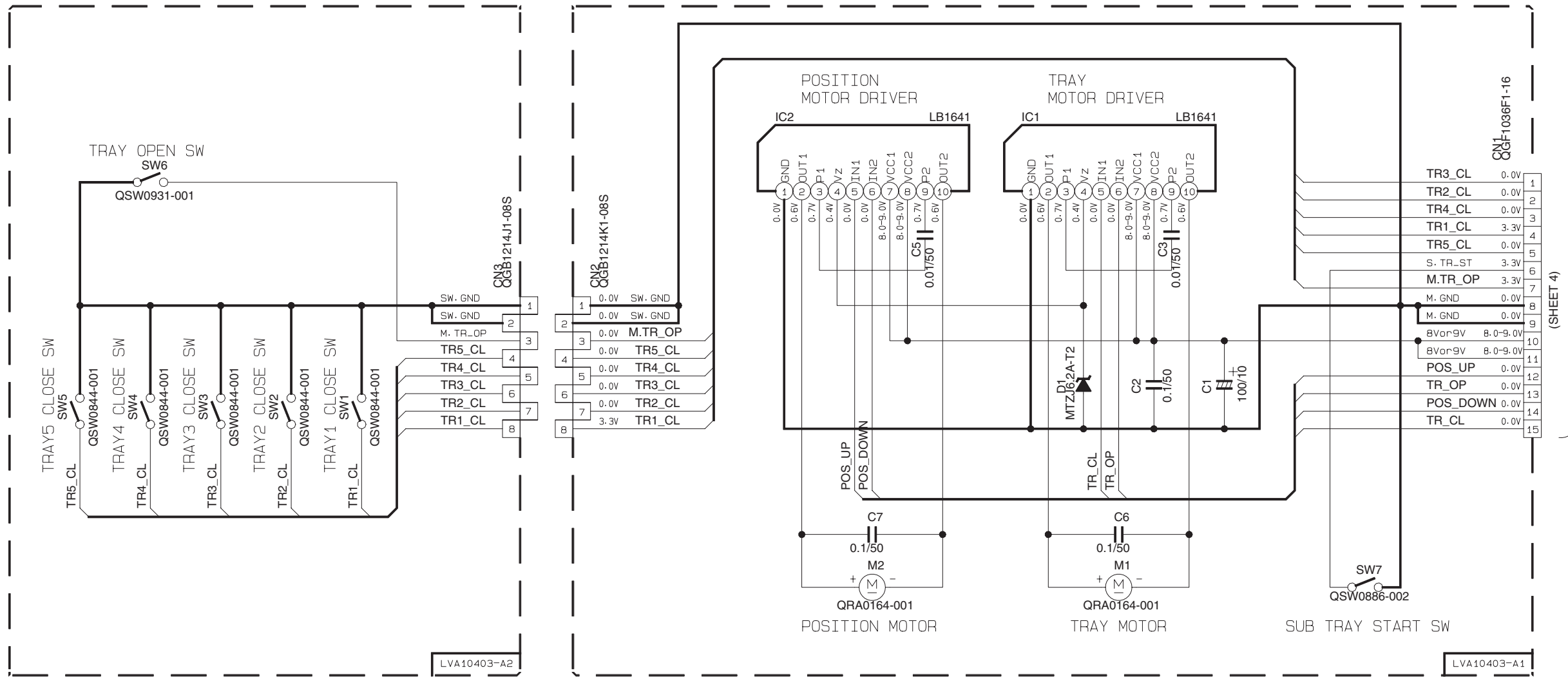
FOR
FLASH
MICON

TO
AMP
PWB
(SHEET 2)

FOR
X4 I/F

- NOTES
1. VOLTAGES ARE DC-MEASURED WITH A DIGITAL VOLT METER
CONDITION: DISC STOP (CDA) [TRAY1]
 2. UNLESS OTHERWISE SPECIFIED,
ALL RESISTOR ARE 1/16W ± 5% METAL GLAZE RESISTOR.
ALL RESISTANCE VALUES ARE IN OHM (Ω).
ALL CAPACITANCE VALUES ARE IN nF [p+PF].
ALL INDUCTANCE VALUES ARE IN μH
ALL E. CAPACITORS ARE SHOWN IN THE FORM OF CAPACITANCE (μF)/RATED VOLTAGE (V).

CD tray control section



NOTES

1. VOLTAGES ARE DC-MEASURED WITH A DIGITAL VOLT METER. CONDITION: DISC1 STOP
2. UNLESS OTHERWISE SPECIFIED. ALL CAPACITORS ARE SHOWN IN THE FORM OF CAPACITANCE (μF)/RATED VOLTAGE (V).

TO POWER AND MECHA CONTROL MTCOM

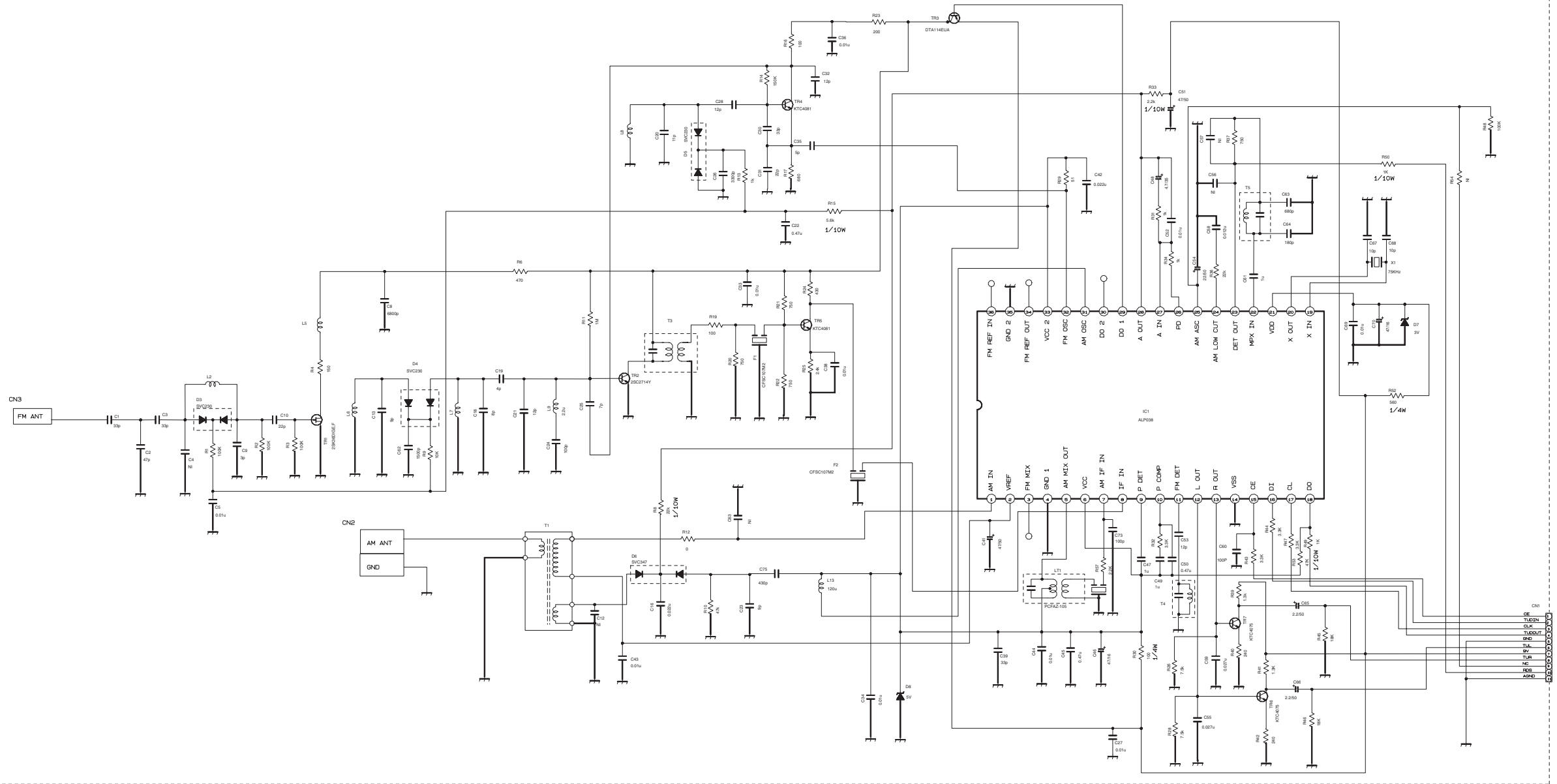
(SHEET 4)

(SHEET 4)

(SHEET 4)

■ FM / AM tuner unit section

QAU0347-001



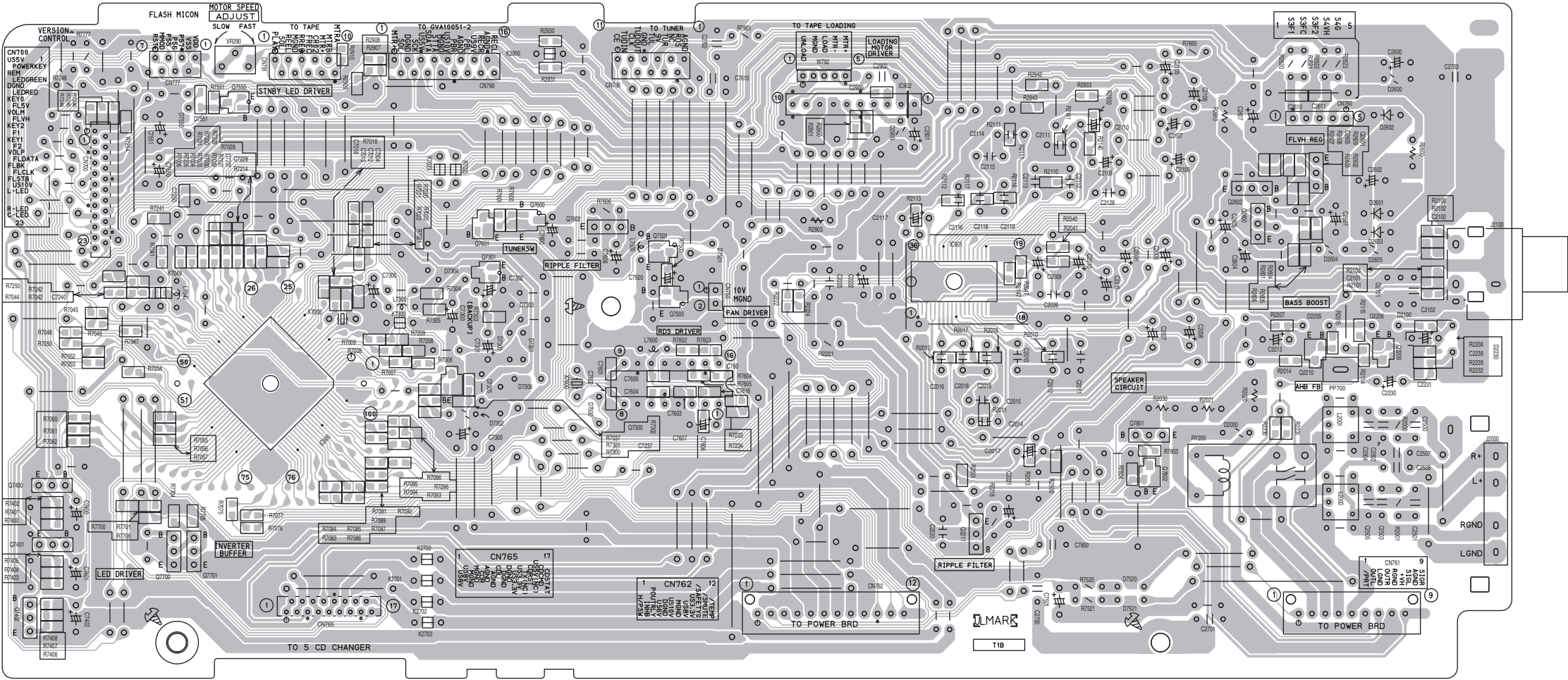
NOTES
 2- UNLESS OTHERWISE SPECIFIED
 ALL RESISTANCE VALUES ARE IN OHMS.
 ALL CAPACITANCE VALUES ARE IN pF(10⁻¹²F).
 ALL INDUCTANCE VALUES ARE IN μH(10⁻⁶H).
 ALL ELECTROLYTIC CAPACITORS ARE SHOWN IN THE FORM OF CAPACITANCE (μF)/RATED VOLTAGE (V).

(SHEET 2)

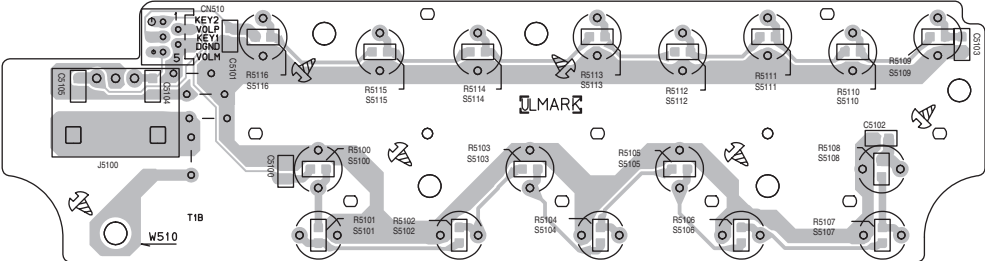
Printed circuit boards

■ Micon board

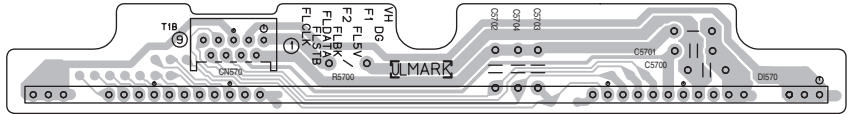
(Micon board)



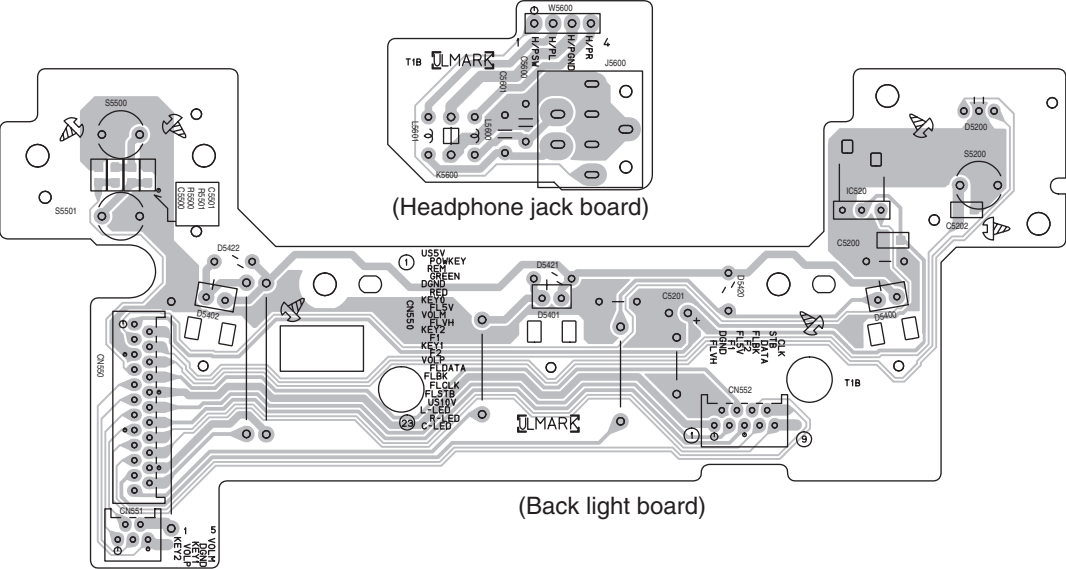
(Switch board)



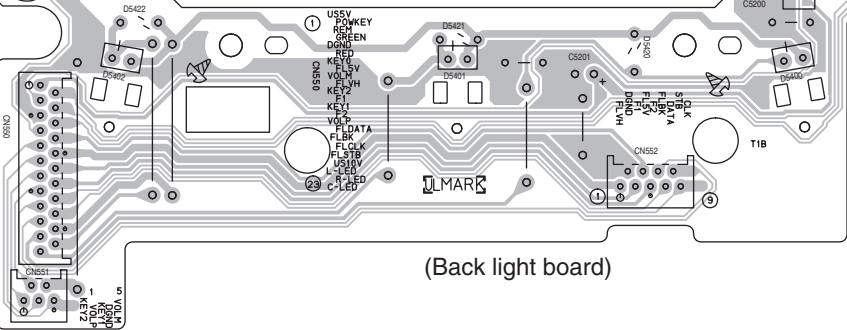
(FL board)



(Headphone jack board)

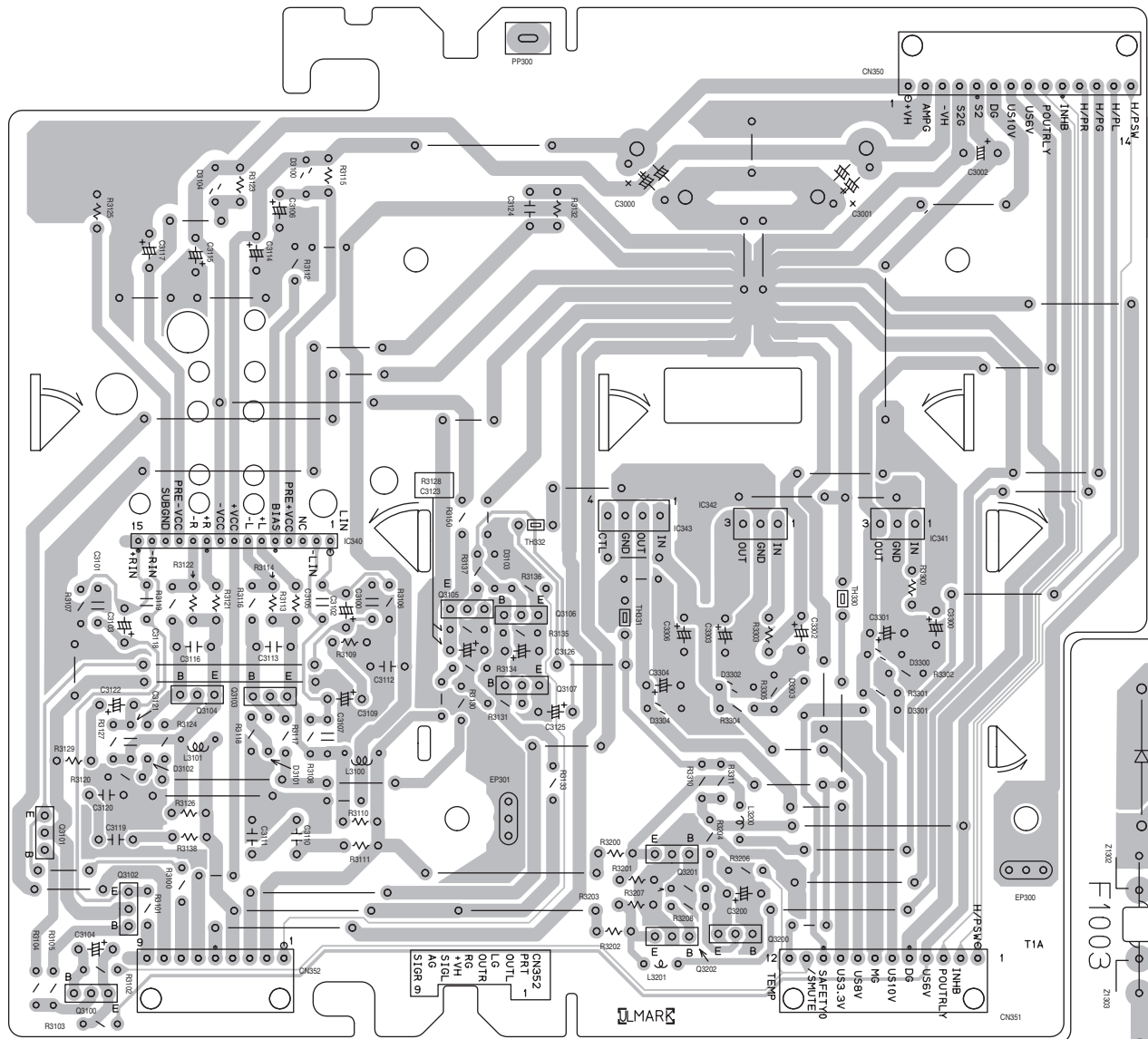


(Back light board)

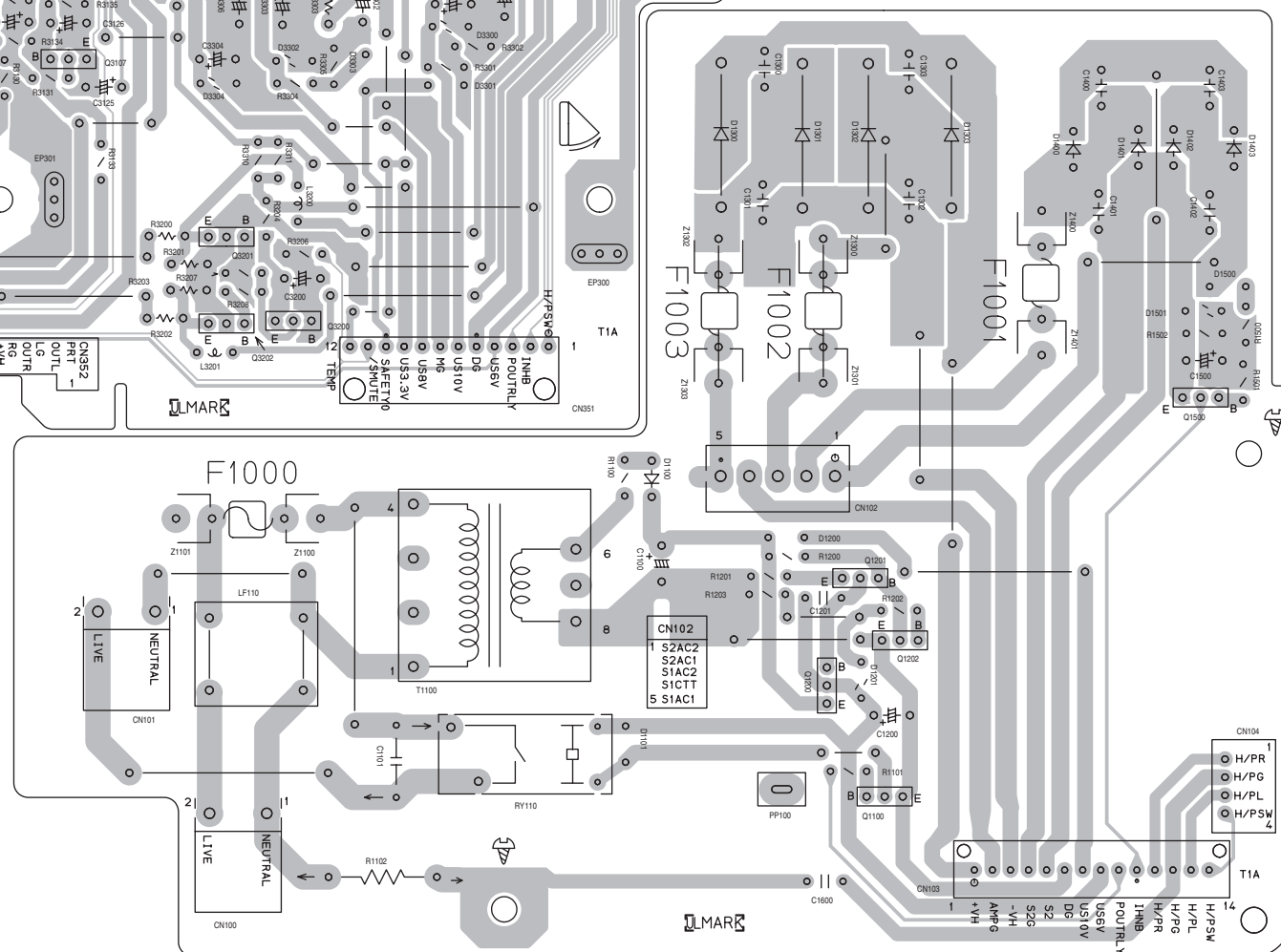


■ Power board

(Power amplifier board)

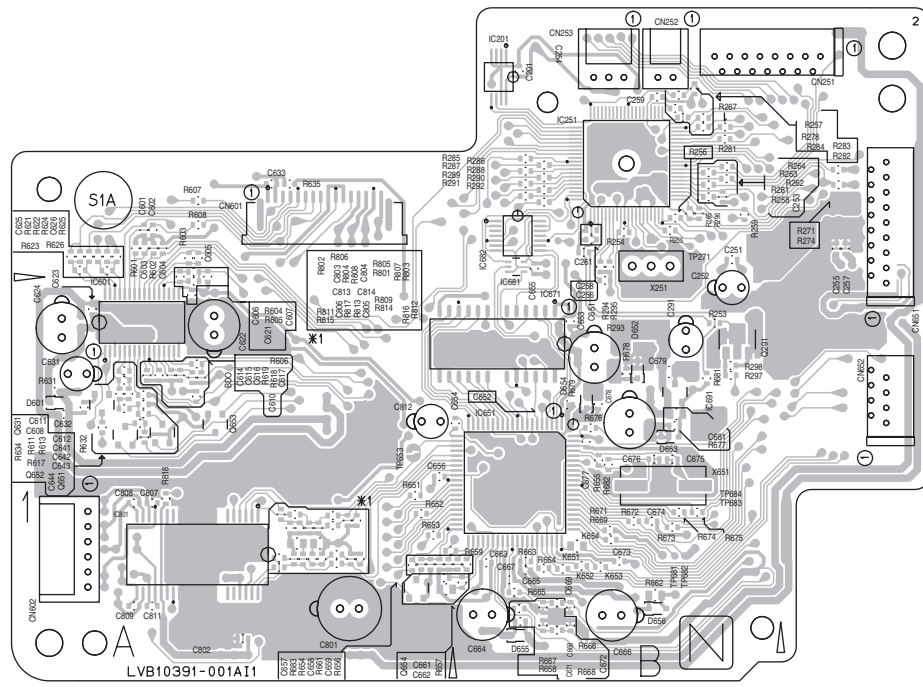


(Power supply board)

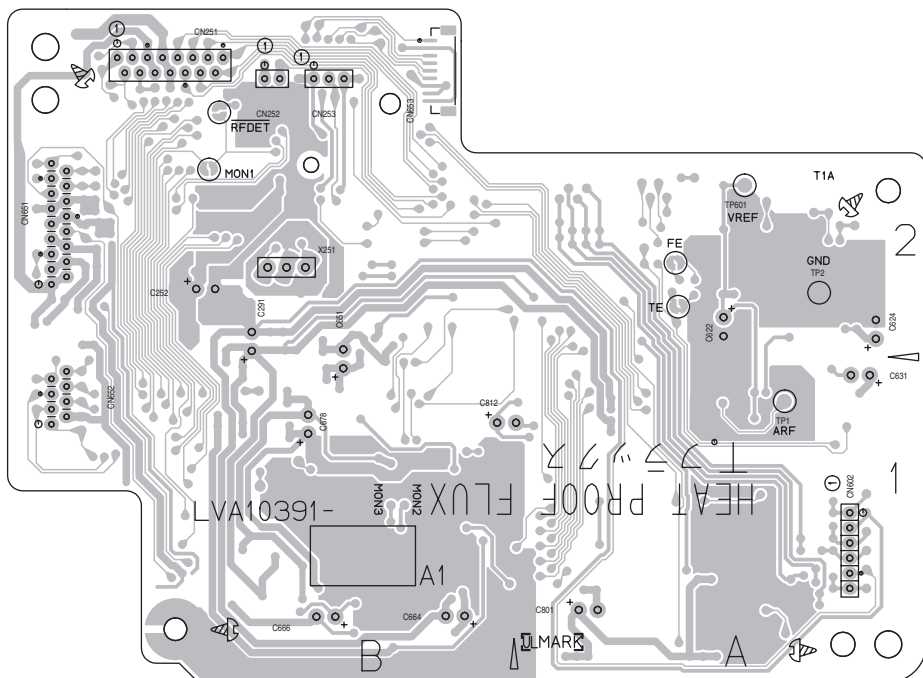


■ CD servo board

(Forward side)

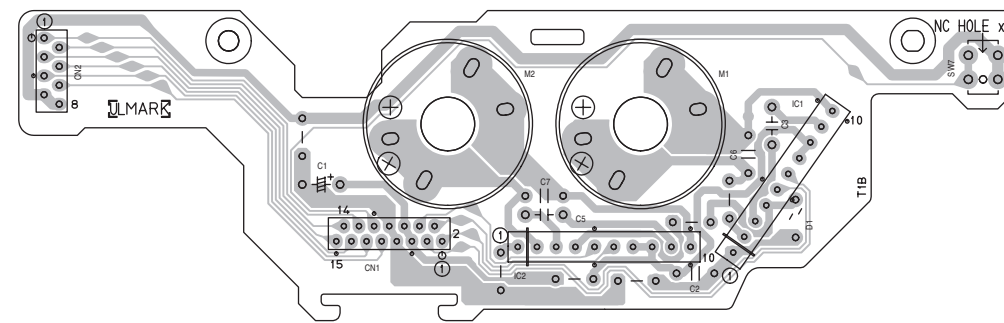


(Reverse side)

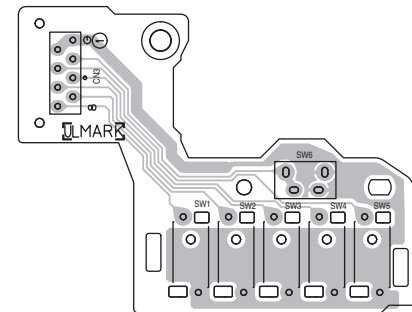


■ Loading switch board

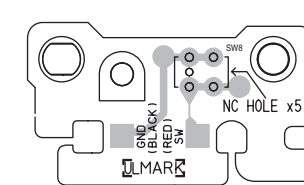
(Motor board)



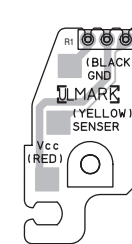
(Tray switch board)



(Switch board)



(Sensor board)



< MEMO >

JVC

VICTOR COMPANY OF JAPAN, LIMITED

AV & MULTIMEDIA COMPANY AUDIO/VIDEO SYSTEMS CATEGORY 10-1, 1chome, Ohwatari-machi, Maebashi-city, 371-8543, Japan

(No.MB211SCH)



Printed in Japan
WPC