

JVC

SCHEMATIC DIAGRAMS

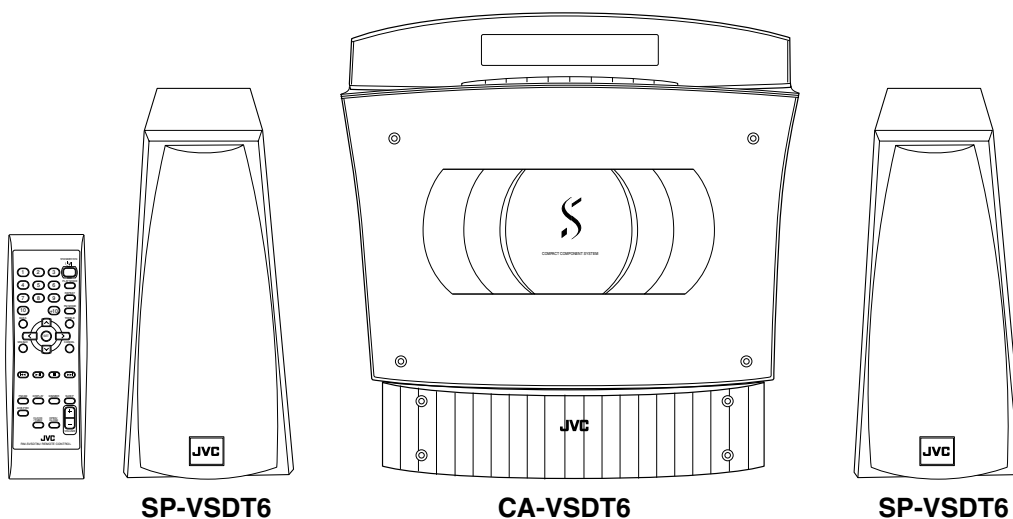
COMPACT COMPONENT SYSTEM

VS-DT6

CD-ROM No.SML200206

Area suffix

J ----- U.S.A.
C ----- Canada



COMPACT
disc
DIGITAL AUDIO

Contents

Block diagram	2-1
Standard schematic diagrams	2-2
Printed circuit boards	2-12~ 16

VS-DT6

In regard with component parts appearing on the silk-screen printed side (parts side) of the PWB diagrams, the parts that are printed over with black such as the resistor (■), diode (⬤) and ICP (●) or identified by the "⚠" mark nearby are critical for safety.

(This regulation does not correspond to J and C version.)

Block diagram

■ Main body section

5

4

3

2

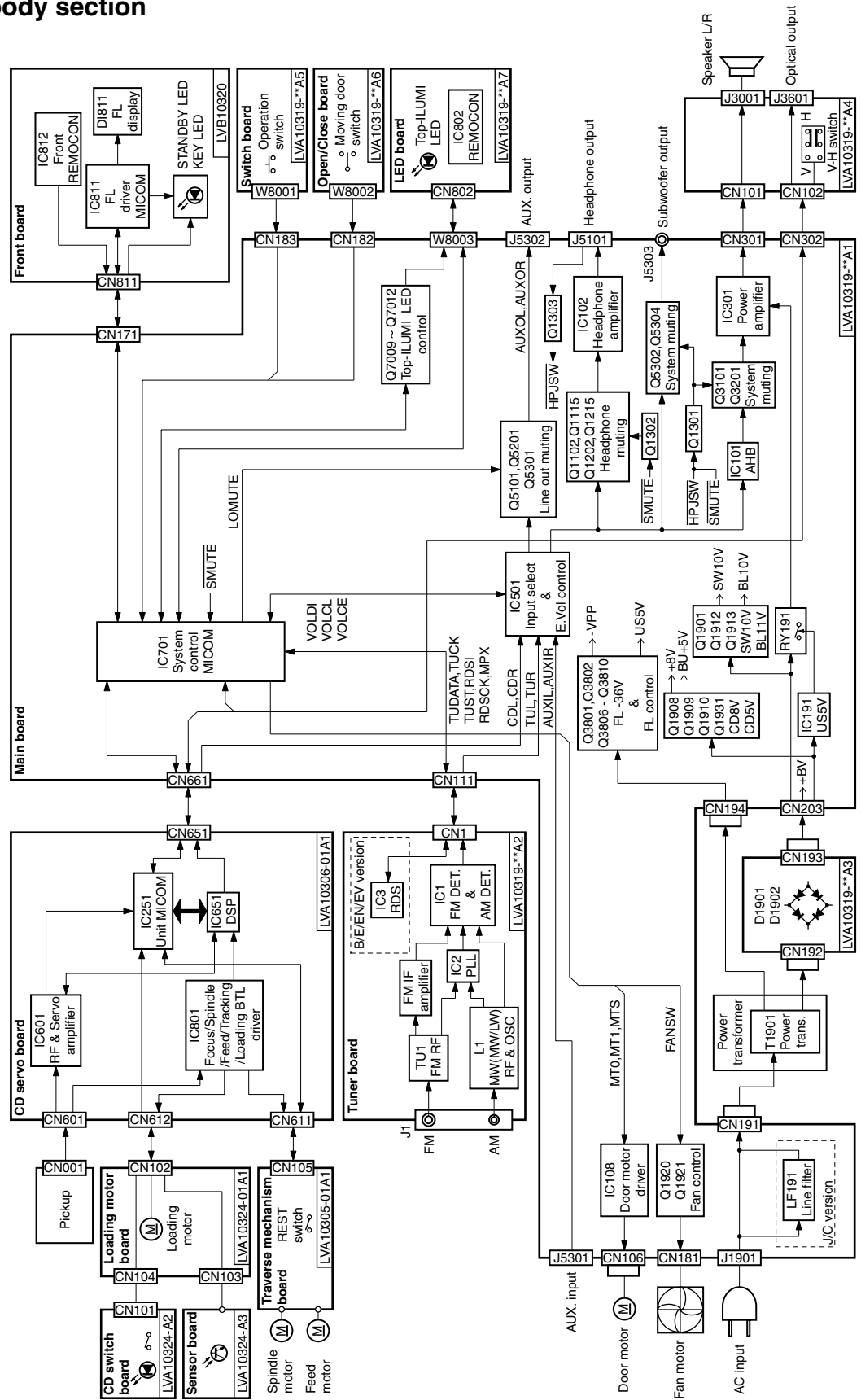
1

A

B

C

D



Standard schematic diagrams

System control section

5

4

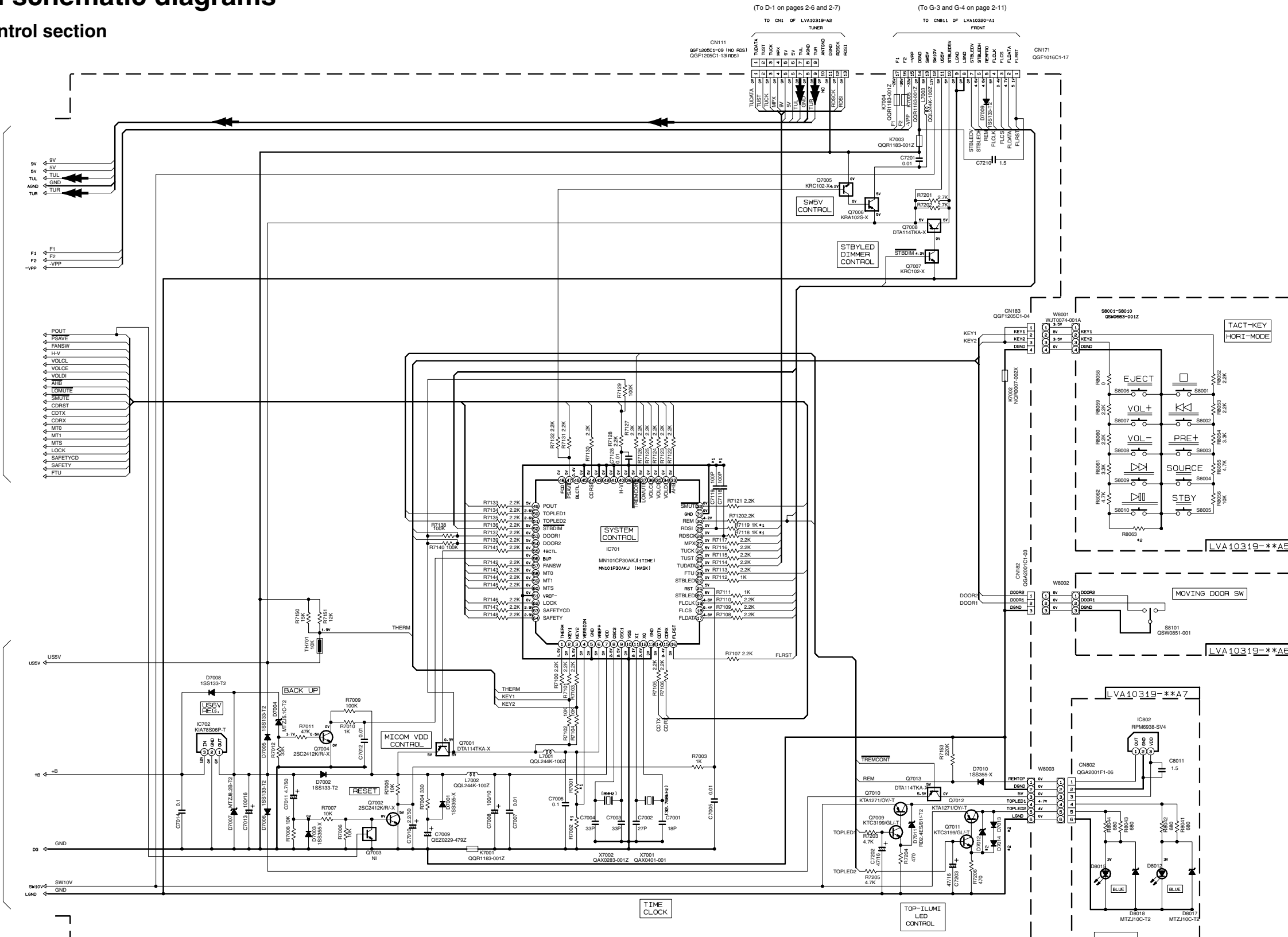
3

2

1

(To C-1 and D-1 on page 2-4)

(To D-1 on page 2-5)



NOTES

1. VOLTAGES ARE DC-MEASURED WITH A DIGITAL VOLT METER
 MODEL VS-DT2000
 CONDITION CD STOP HORI-MODE
 VOL: 1.6 BASS: 0 TREBLE: 0 DIMMER OFF

2. UNLESS OTHERWISE SPECIFIED, RESISTORS ARE 1/10W (OR 1/16W) ±5% MG RESISTOR.
 ALL RESISTANCE VALUES ARE IN OHM (Ω).
 ALL CAPACITORS ARE CERAMIC CAPACITOR OR MYLAR CAPACITOR.
 ALL CAPACITANCE VALUES ARE IN μF (μF).
 ALL INDUCTANCE VALUES ARE IN mH (mH).
 ALL E-CAPACITORS ARE SHOWN IN THE FORM OF CAPACITANCE (μF)/RATED VOLTAGE (V).

LVA10319-**A1
(2/2)

1	UX	UY/UW	other U	J/C	EE	A	B/E/EN/EV	D _o
R7001	12K	27K	6.8K	47K	27K	27K	10K	none
R7002	27K	33K	27K	39K	12K	5.6K	none	10W
R7118	none	none	none	none	1K	none	1K	none
C7118	1000m	1000m	1000m	1000m	100P	100P	100P	1000m
R7119	none	none	none	none	1K	none	1K	none
C7119	1000m	1000m	1000m	1000m	100P	100P	100P	1000m

*2	VS-DT6 (R)	VS-DTR/GR	VS-DT2000 (R)
R8063	none	27K	10K
D7012	RED. 4ES/BI/-12	none	none
D7013-D7014	RED. 4ES/BI/-12	none	none

➔ RADIO SIGNAL

Power amplifier/Power supply section

5
4
3
2
1
A B C D E F G

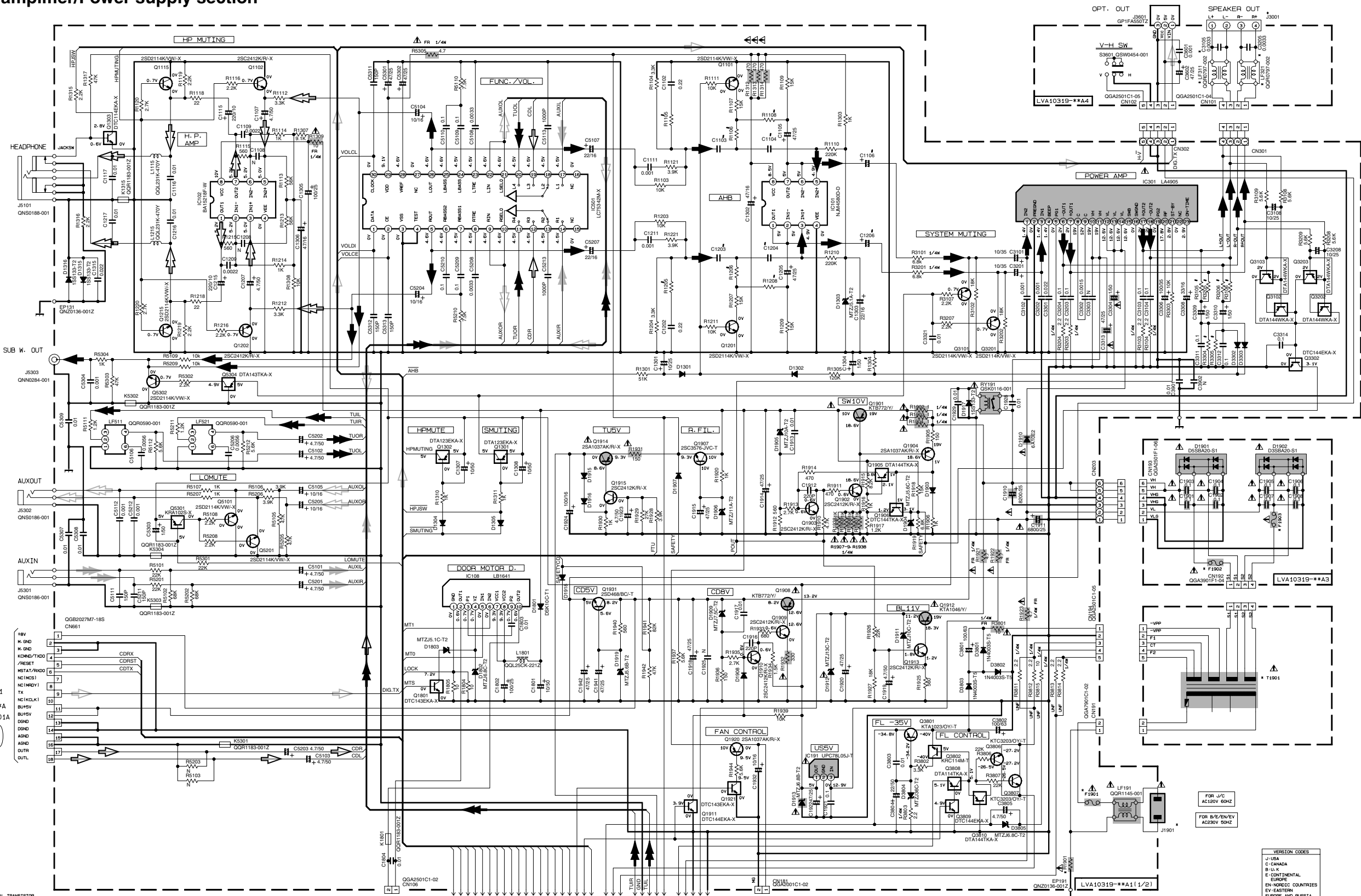


TABLE 1 DIGITAL TRANSISTOR

DTA123KA-X	DTA144KA-X	DTA114TKA-X	DTA144TKA-X
KRA102S-X	DTA143TKA-X	DTA144KA-X	DTA143KA-X
DTA144KA-X	DTA144TKA-X	KRC114M-T	

- NOTES:
- VOLTAGES ARE DC-MEASURED WITH A DIGITAL VOLT METER OR OSCILLOSCOPE WITHOUT INPUT SIGNAL. CONDITION — CD STOP MODE Vol. 0
 - UNLESS OTHERWISE SPECIFIED RESISTORS ARE ± 5% METAL GLAZE RESISTOR. ALL RESISTANCE VALUES ARE IN OHM(Ω). ALL CAPACITORS ARE CERAMIC CAPACITOR OR MYLAR CAPACITOR. ALL CAPACITANCE VALUES ARE IN nF(pF). ALL INDUCTANCE VALUES ARE IN mH(mH). ALL E-CAPACITORS ARE SHOWN IN THE FORM OF CAPACITANCE (μF)/RATED VOLTAGE (V). ALL DIODES ARE 1SS133

MARK

R1808	R1809	R1808	R1804	C1803	C1804	C1808	R1808	R1804		
DTB1R1/7R	2.7K	2.2K	3.3K	120K	0.068	0.068	10/35	30K	30K	5.5K
DTB791R1	2.2K	3.9K	4.3K	220K	0.056	0.056	22/16	39K	39K	6.8K

MARK

R1901	J/C	E/B/EV/EV/AP	Δ	UF
F1901	1A/125V	NONE	T500AL	T500AL
F1902	BA/125V	NONE	T6.3AL	T6.3AL
F1903	3.15A/125V	NONE	T3.15AL	T3.15AL
F1904	GA10/36V-003	GA10/36V-003	GA10/36V-003	GA10/36V-003
LF311/LF321	NONE	GA90797-002	GA90797-002	GA90797-002
C3105/C3205	NONE	0.0033	0.0033	0.0033
J1901	GNCD091-001	GNCD091-001	GNCD091-001	GNCD091-001
J3001	GNB0090-002	GNB0090-002	GNB0090-002	GNB0090-002

- VERSION LVA10319-***A11/2/1
- Parts are safety assurance parts. When replacing those parts, make sure to use the specified one.
- MAIN SIGNAL
 - RADIO SIGNAL
 - CD SIGNAL
 - DIGITAL SIGNAL
 - LINE INPUT SIGNAL
 - LINE OUTPUT SIGNAL
 - HEAD PHONE SIGNAL

VERSION CODES

J-USA
C-CANADA
B-U.K
E-CONTINENTAL EUROPE
EN-NORDIC COUNTRIES
EV-EASTERN EUROPE AND RUSSIA

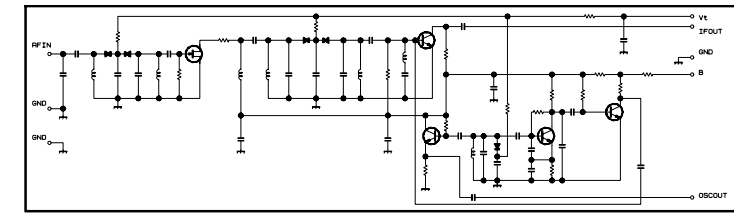
NOTE: MARK #1 IS TO SHOW DEVIATION IN VERSIONS. DETAILS ARE EXPLAINED NEAR MARK.

Tuner section

CONDITION	PIN NO.	1	2	3	4	5	6	7	8	9	10	11	12	13	14	15	16	17	18	19	20	21	22	23	24	25	26	27	28	29	30
IC1	FM NO SIGNAL	3.6	8.9	3.6	3.6	0	5.0	5.0	8.9	8.9	1.3	0.1	0	0.9	7.8	7.8	4.3	4.3	4.3	4.3	3.4	3.4	2.8	3.4	0	0	3.6	3.6	3.6	2.7	
	FM 600B STEREO	3.6	8.9	3.6	3.6	0	5.0	5.0	8.9	8.9	1.3	4.3	0	0.9	7.8	7.8	4.3	4.3	4.3	4.3	3.4	3.4	2.8	3.4	0	0	3.6	3.6	3.6	2.7	
	AM NO SIGNAL	3.5	9.0	3.5	3.5	0	5.0	5.1	9.0	2.6	1.3	0	0	0.9	4.7	5.5	4.3	4.3	4.3	4.3	3.3	3.0	2.8	ust	0.7	0.7	3.6	3.6	3.6	2.1	
IC2	FM NO SIGNAL	2.5	0	0	5.0	4.9	5.0	7.9	7.8	3.6	6.1	5.1	0	0	0	0	2.5	5.1	0.9	0.9	3.8	0	2.3								

Tr NO.	Q1	Q5
PIN NO.	E C B	E C B
FM 87.5MHz NO SIGNAL	0 7.1 0.85	8.9 8.8 0
AM 52KHz NO SIGNAL	0 0 0	9.0 0 8.9

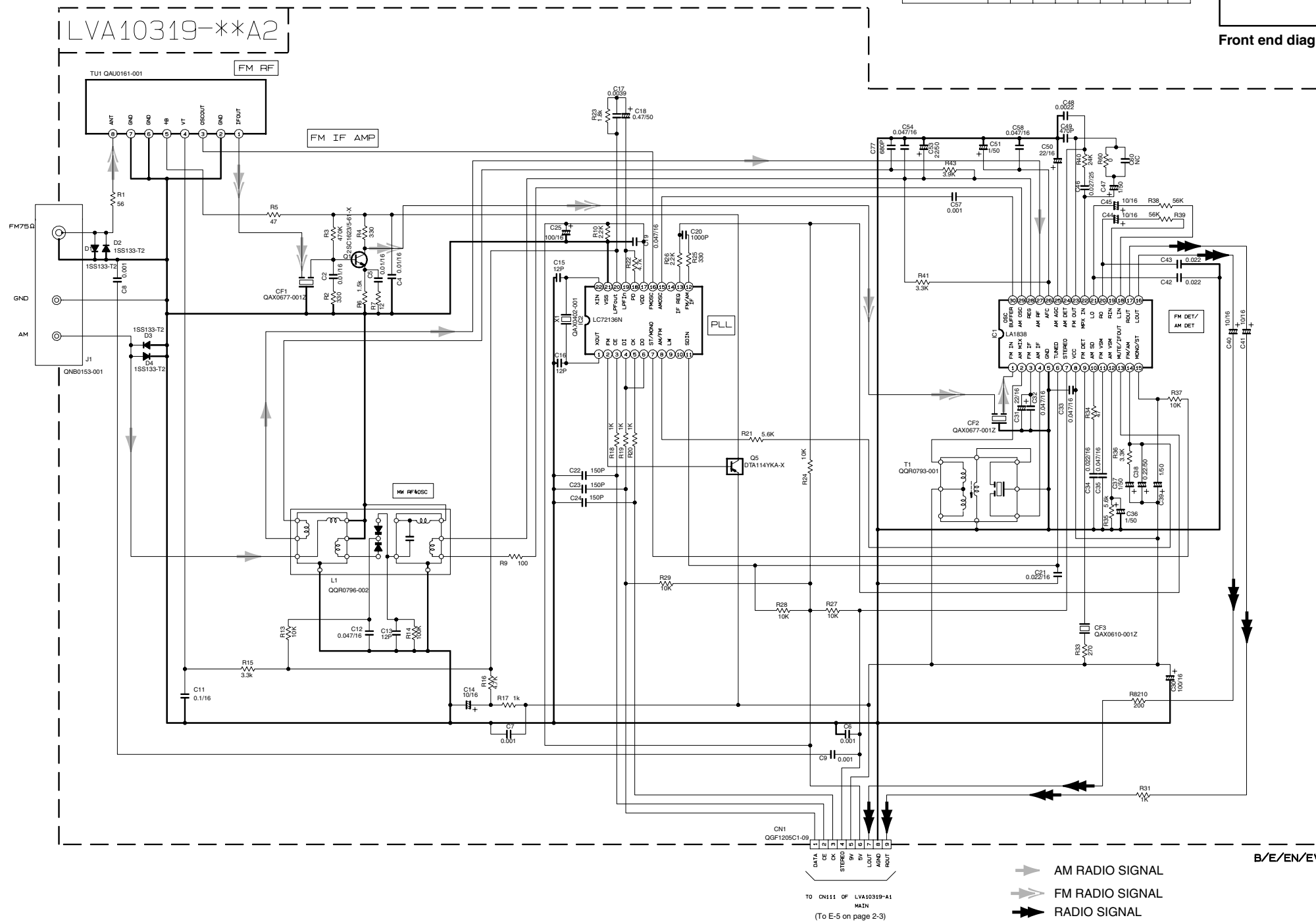
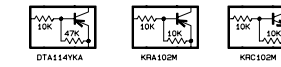
Tr NO.	Q2	Q3	Q4
PIN NO.	E C B	E C B	E C B
AM 52KHz NO SIGNAL	0 0 0.7	0 0 0.7	0 3.6 0.7
AM 144KHz NO SIGNAL	0 0 0.3	0 0.3 0.3	3.6 3.6 3.6



Front end diagram

NOTES

1. VOLTAGES ARE DC-MEASURED WITH A DIGITAL VOLT METER.
2. ALL RESISTORS ARE 1/16W ±5% METAL GLAZE RESISTOR.
3. ALL RESISTANCE VALUES ARE IN OHM(Ω).
4. ALL CAPASITANCE VALUES ARE IN *F(P=pF).
5. SI DIODES (D) ARE 1SS133-T THAT CAN BE CHANGED TO SIMILAR DIODE SUCH AS MA165 OR HSS104J.



- ➔ AM RADIO SIGNAL
- ➔ FM RADIO SIGNAL
- ➔ RADIO SIGNAL

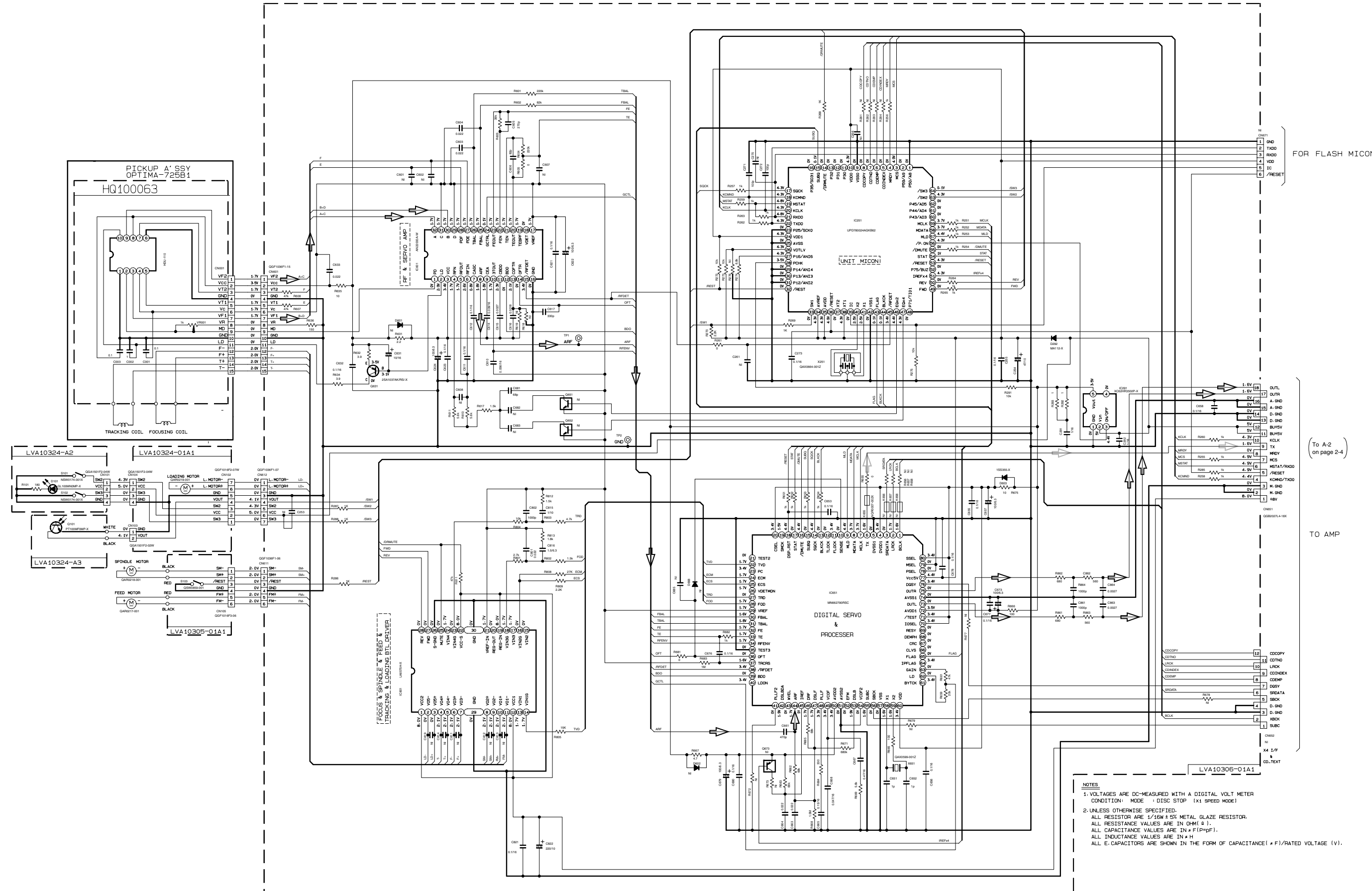
TO CN11 OF LVA10319-A1 MAIN (To E-5 on page 2-3)

5
4
3
2
1

A B C 24 D E F G H

CD servo control section

5
4
3
2
1



NOTES
 1. VOLTAGES ARE DC-MEASURED WITH A DIGITAL VOLT METER
 CONDITION: MODE : DISC STOP (X1 SPEED MODE)
 2. UNLESS OTHERWISE SPECIFIED,
 ALL RESISTOR ARE 1/16W ± 5% METAL GLAZE RESISTOR.
 ALL RESISTANCE VALUES ARE IN OHM (Ω).
 ALL CAPACITANCE VALUES ARE IN μF (P=μF).
 ALL INDUCTANCE VALUES ARE IN μH
 ALL E. CAPACITORS ARE SHOWN IN THE FORM OF CAPACITANCE (μF)/RATED VOLTAGE (V).

➡ CD SIGNAL
 ➡ DIGITAL SIGNAL

FOR FLASH MICON

To A-2
on page 2-4

TO AMP

A

B

C

D

E

F

G

FL control section

5

4

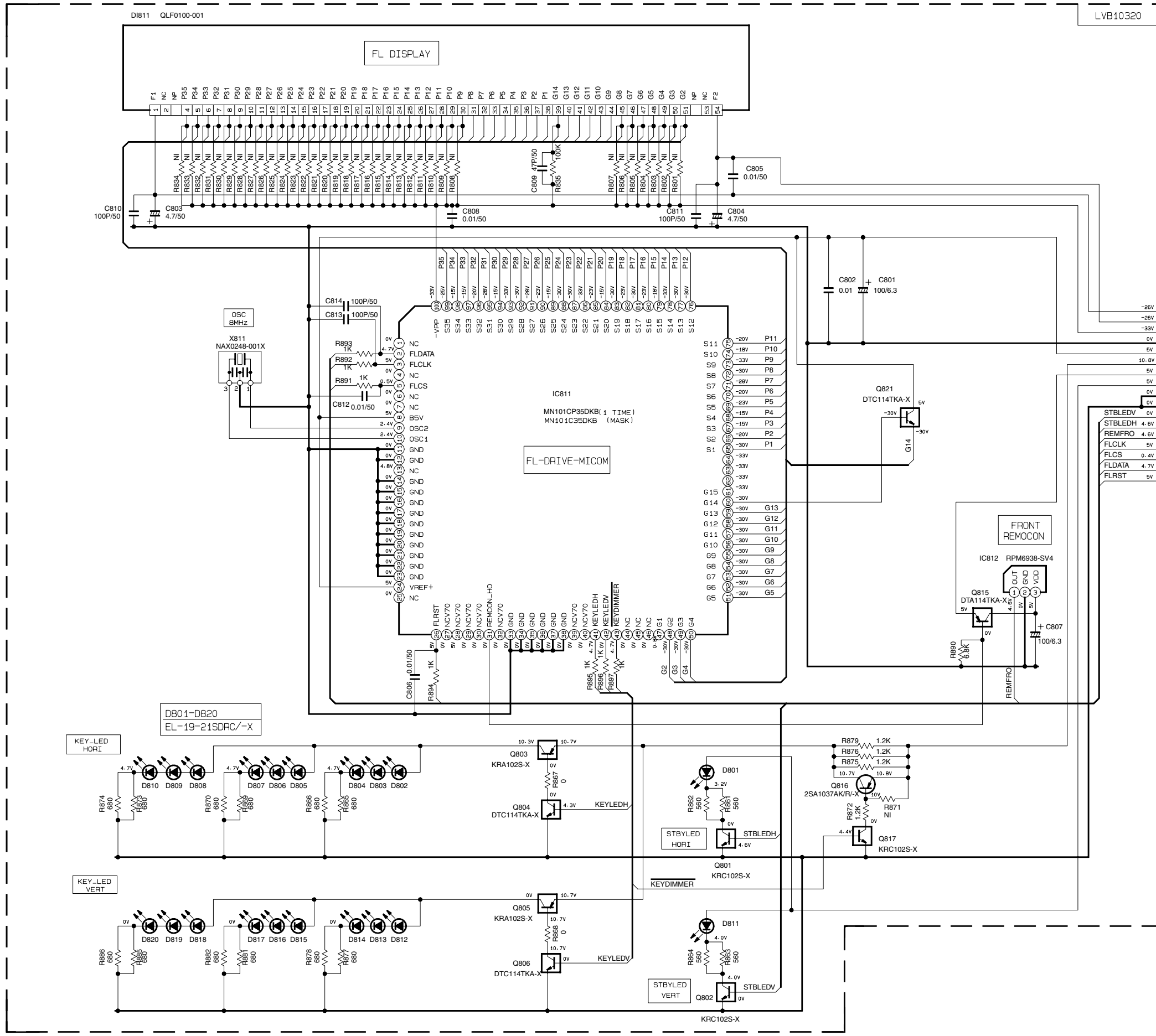
3

2

1

NOTES

- 1. VOLTAGES ARE DC-MEASURED WITH A DIGITAL VOLT METER WITHOUT INPUT SIGNAL. CONDITION --- POW-ON; FUNC:GD-STOP; HORI-MODE
- 2. UNLESS OTHERWISE SPECIFIED.
- ALL RESISTORS ARE 1/16W±5% METAL GLAZE RESISTOR. (OR 1/10W)
- ALL RESISTANCE VALUES ARE IN OHM(Ω).
- ALL CAPACITANCE VALUES ARE IN μF(P-PF).
- ALL CAPACITORS ARE SHOWN IN THE FORM OF CAPACITANCE(μF)/RATED VOLTAGE (V).



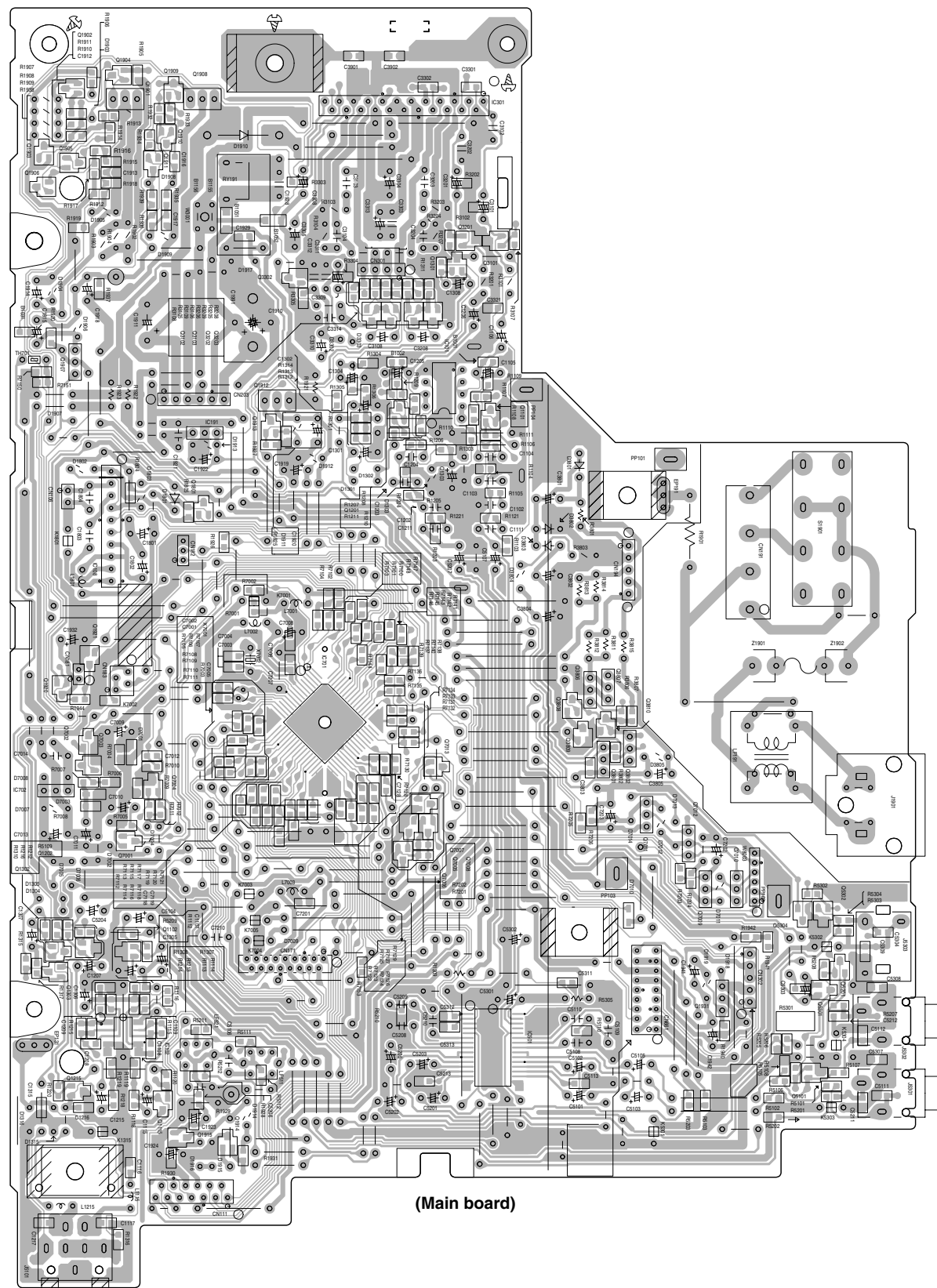
CN811 QGF1016F2-17W

17	-26V	F1
16	-26V	F2
15	-33V	-VPP
14	0V	DGND
13	5V	SW5V
12	10.8V	SW10V
11	5V	USSV
10	5V	STBLED5V
9	0V	LGND
8	0V	LGND
7	0V	STBLEDV
6	4.6V	STBLEDH
5	4.6V	REMFRO
4	5V	FLCLK
3	0.4V	FLCS
2	4.7V	FLDATA
1	5V	FLRST

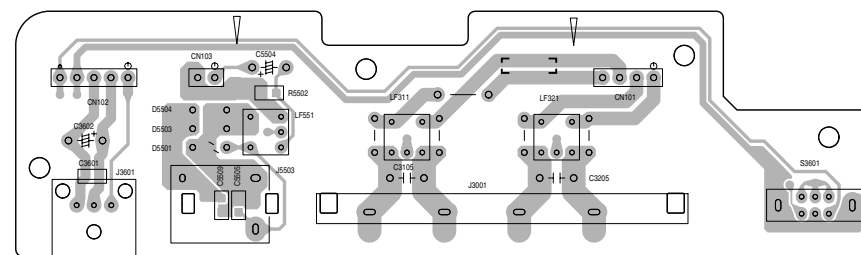
TO CN171 OF LVA10319-A1
(To E.6 and F.5 on page 2-3)

Printed circuit boards

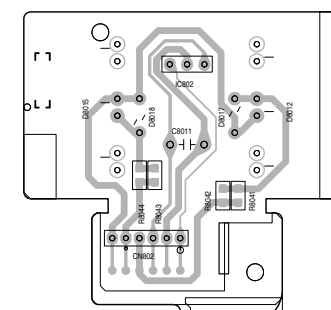
■ Main board



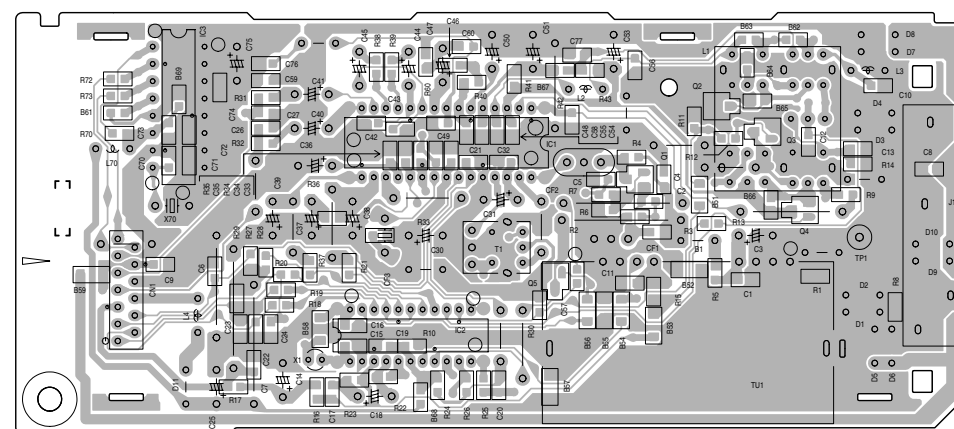
(Main board)



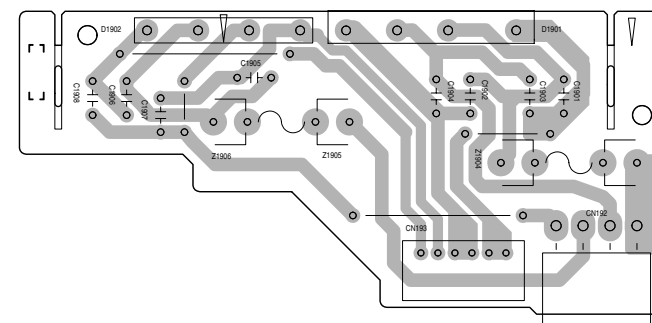
(Speaker board)



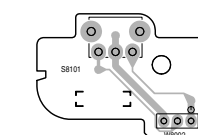
(LED board)



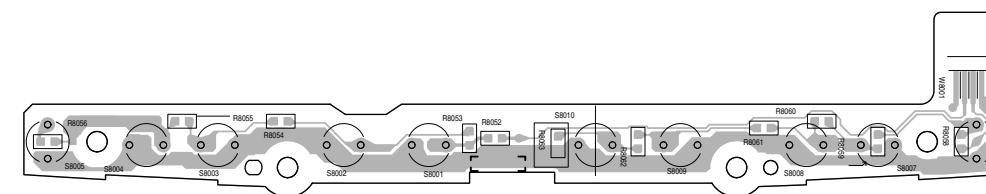
(Tuner board)



(Power amplifier board)



(Open/Close board)



(Switch board)

5

4

3

2

1

A

B

C

D

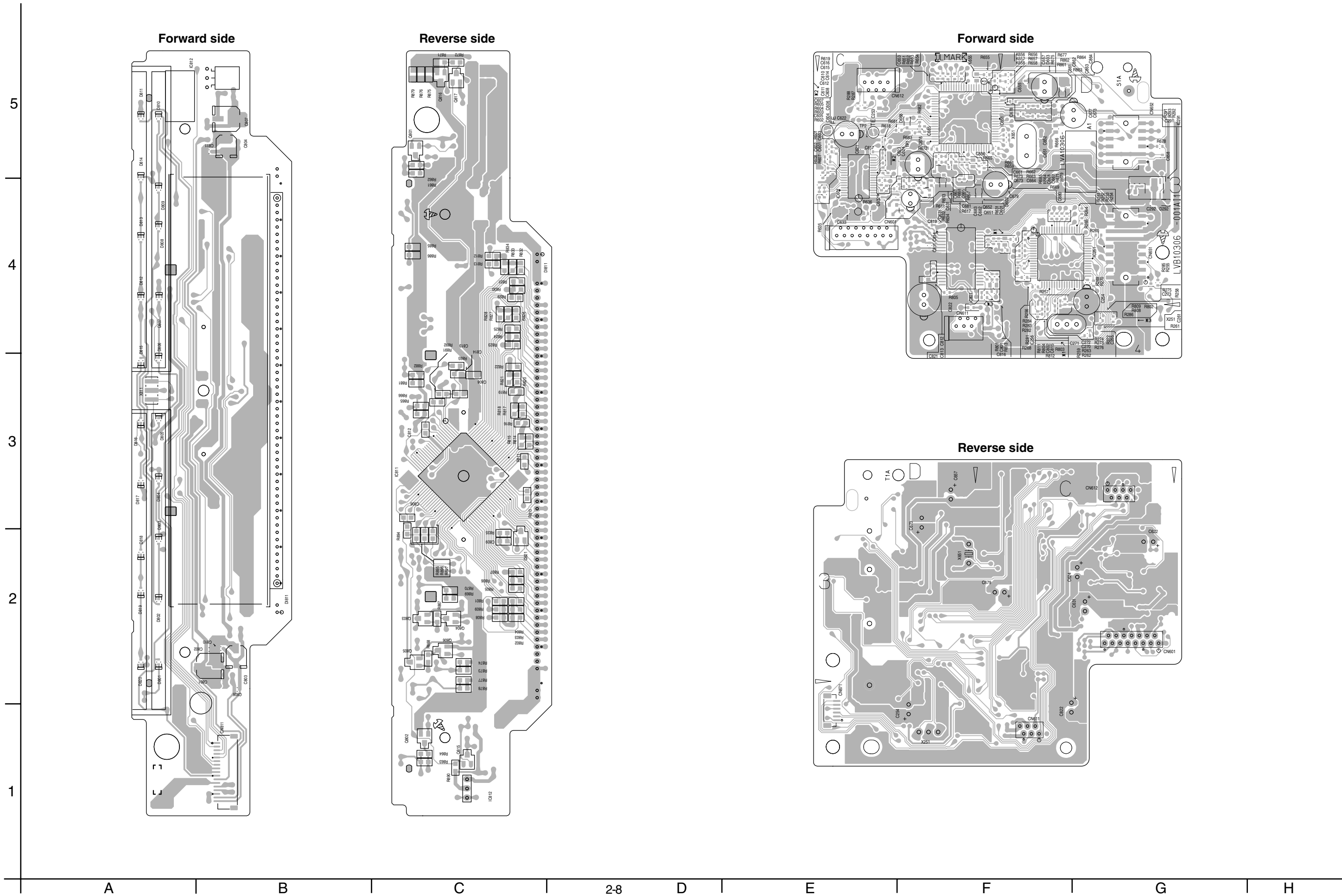
E

F

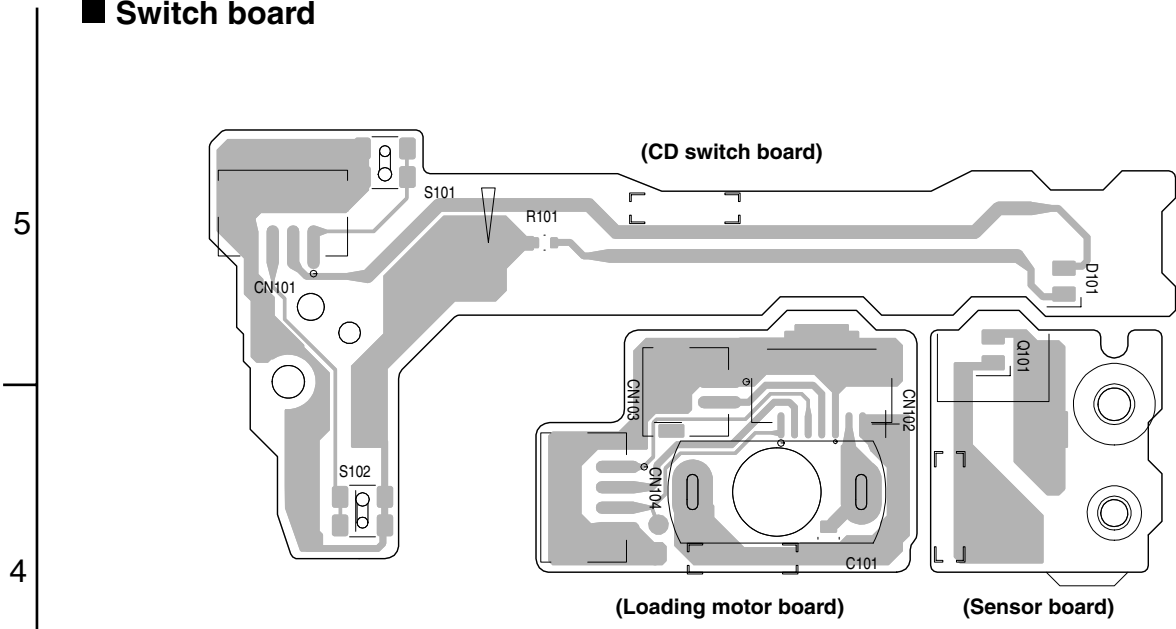
G

■ Front board

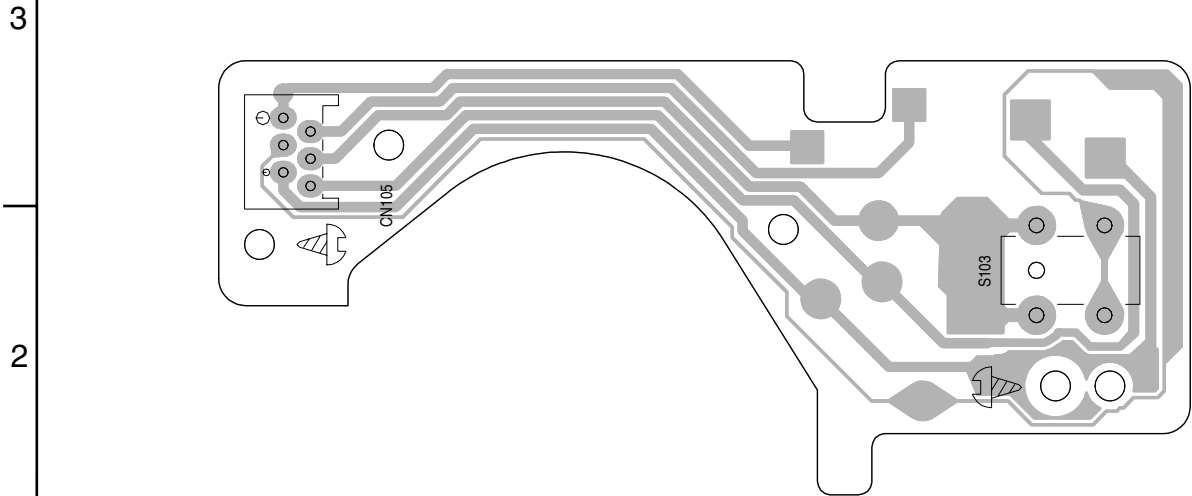
■ CD servo board



■ Switch board



■ Traverse mechanism board





VICTOR COMPANY OF JAPAN, LIMITED

AUDIO & COMMUNICATION BUSINESS DIVISION

PERSONAL & MOBILE NETWORK BUSINESS UNIT. 10-1,1Chome,Ohwatari-machi,maebashi-city,371-8543,Japan