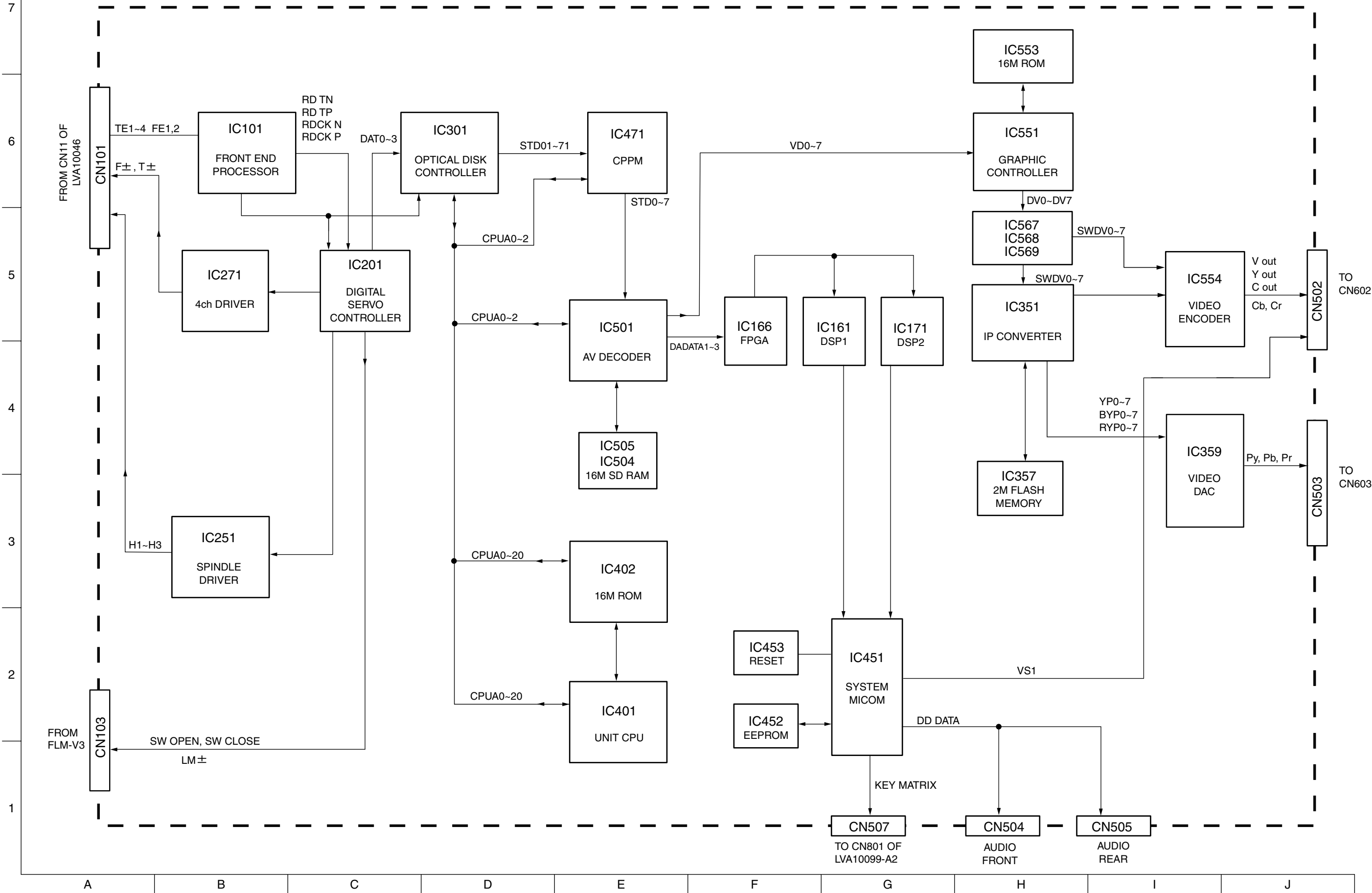
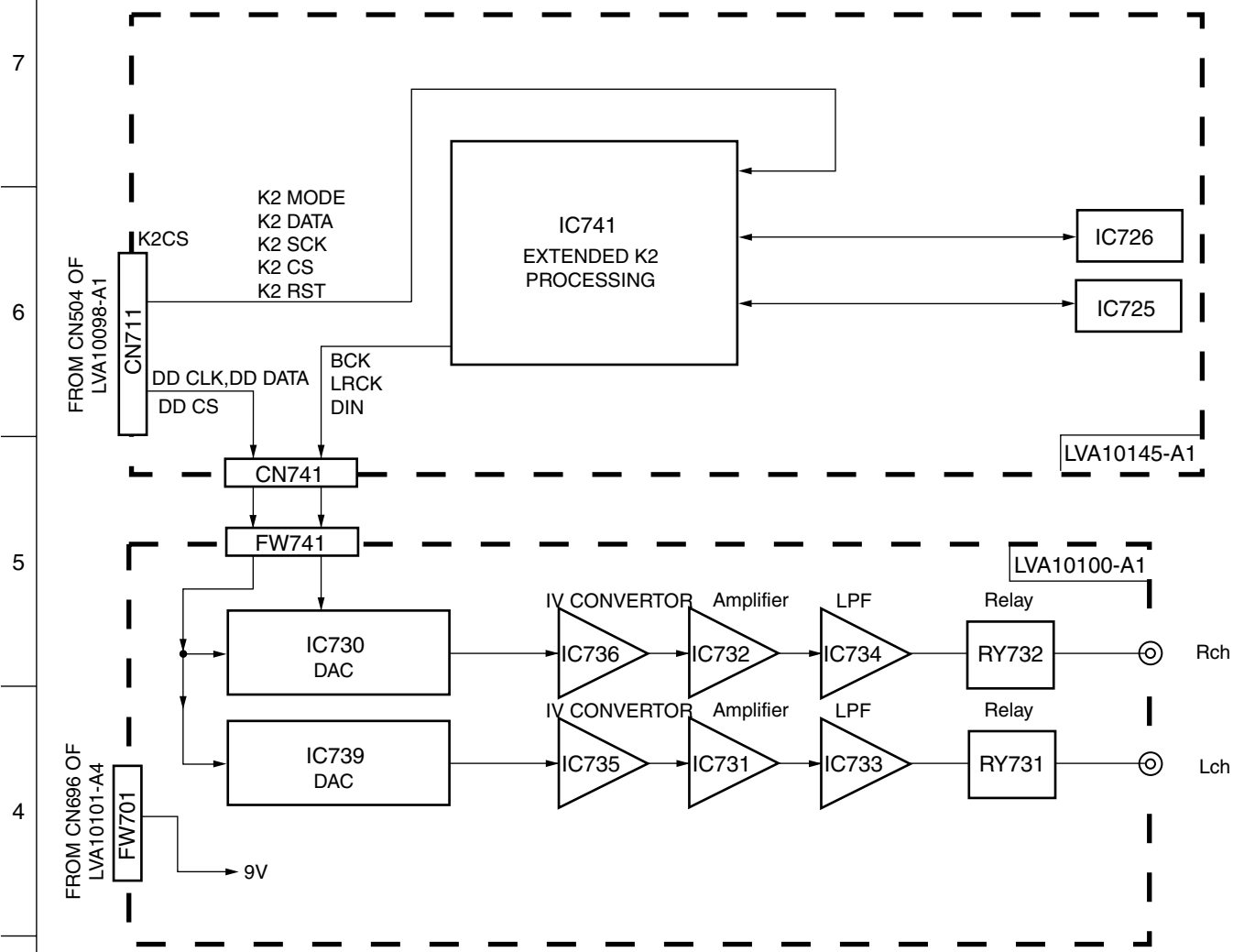


Block diagrams

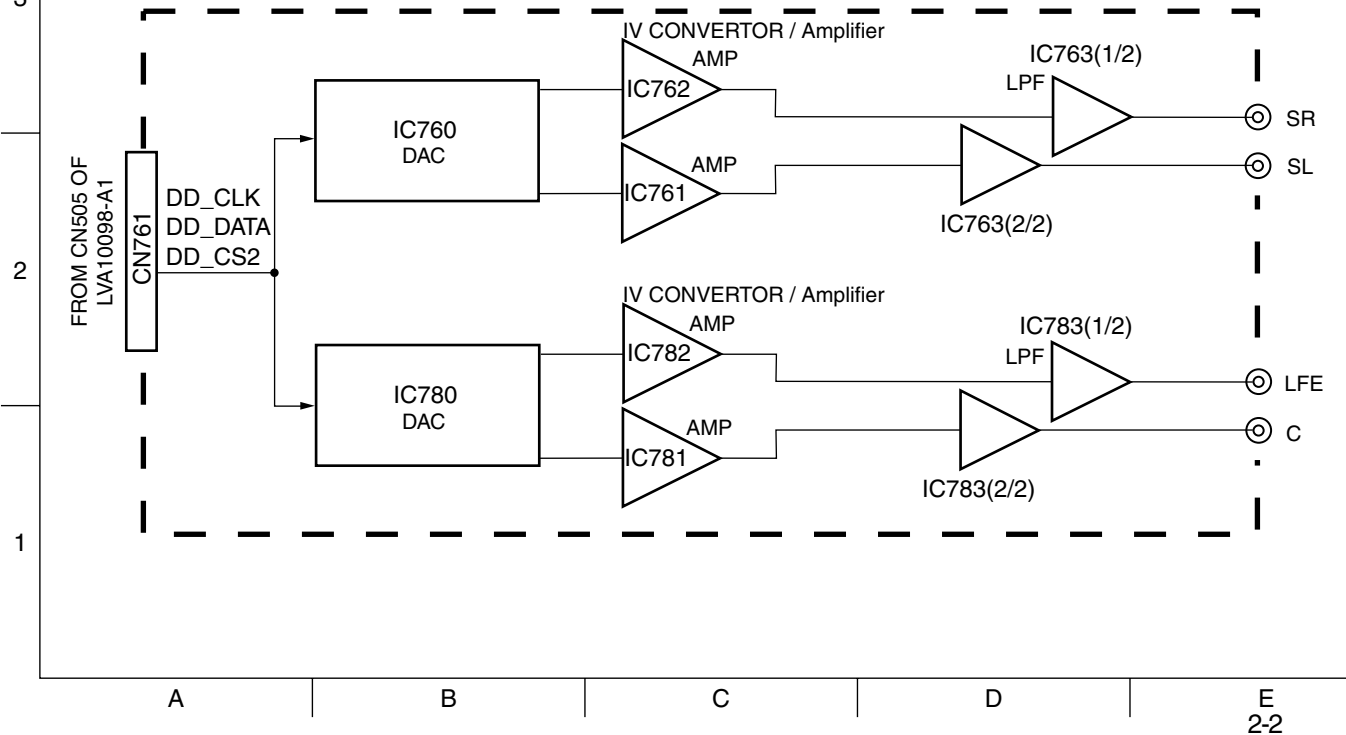
■ Main section



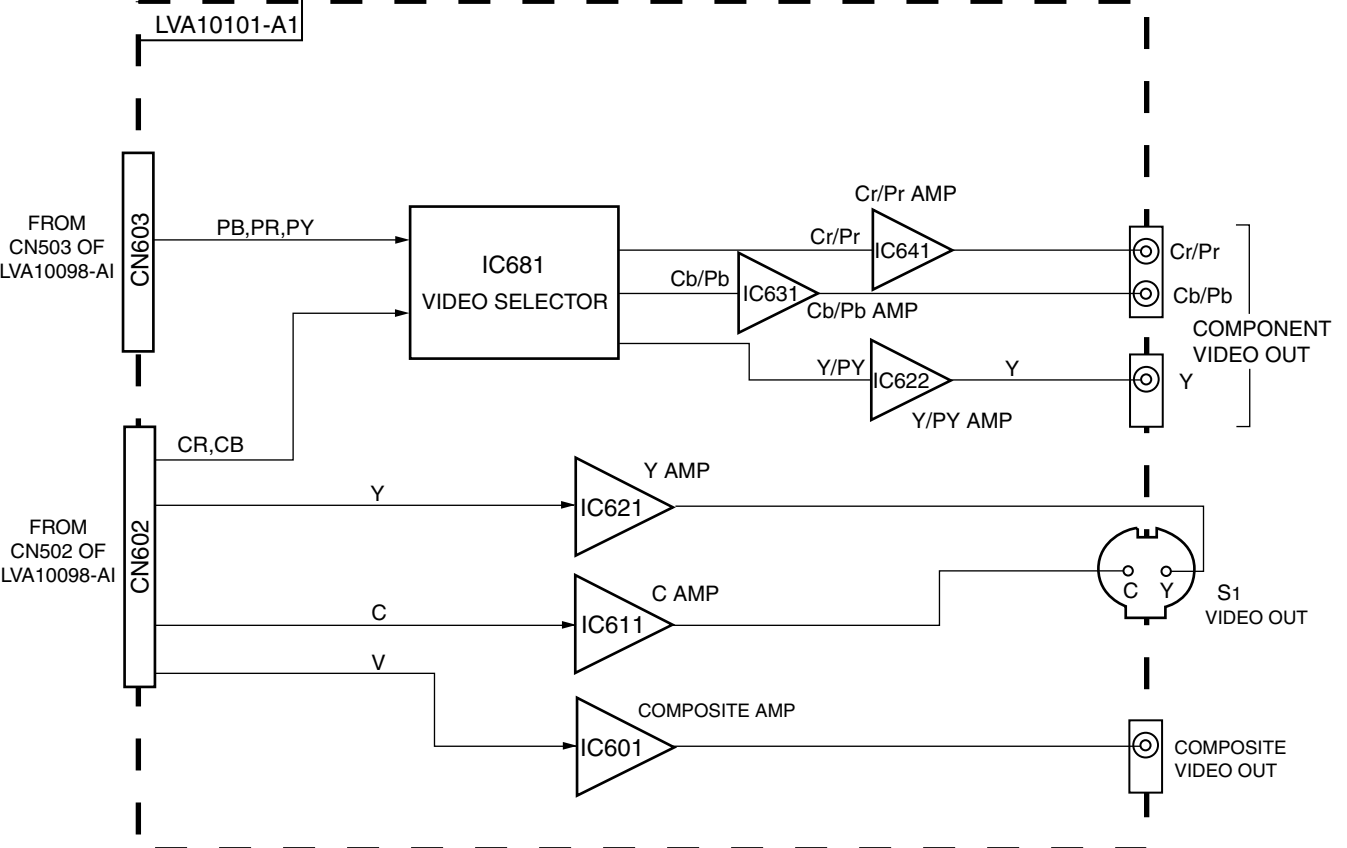
■ K2 Processing and audio (front) section



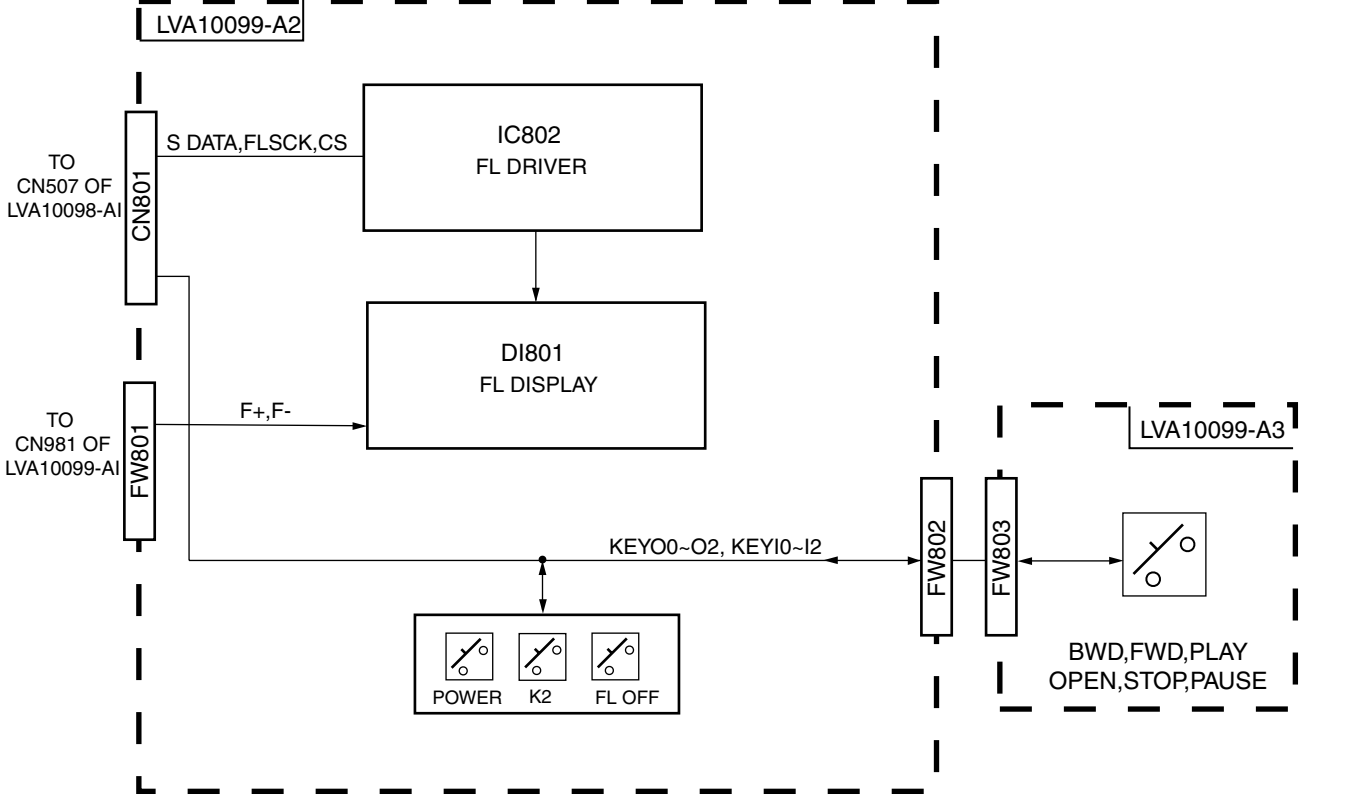
■ Audio (rear,center,sub woofer) section



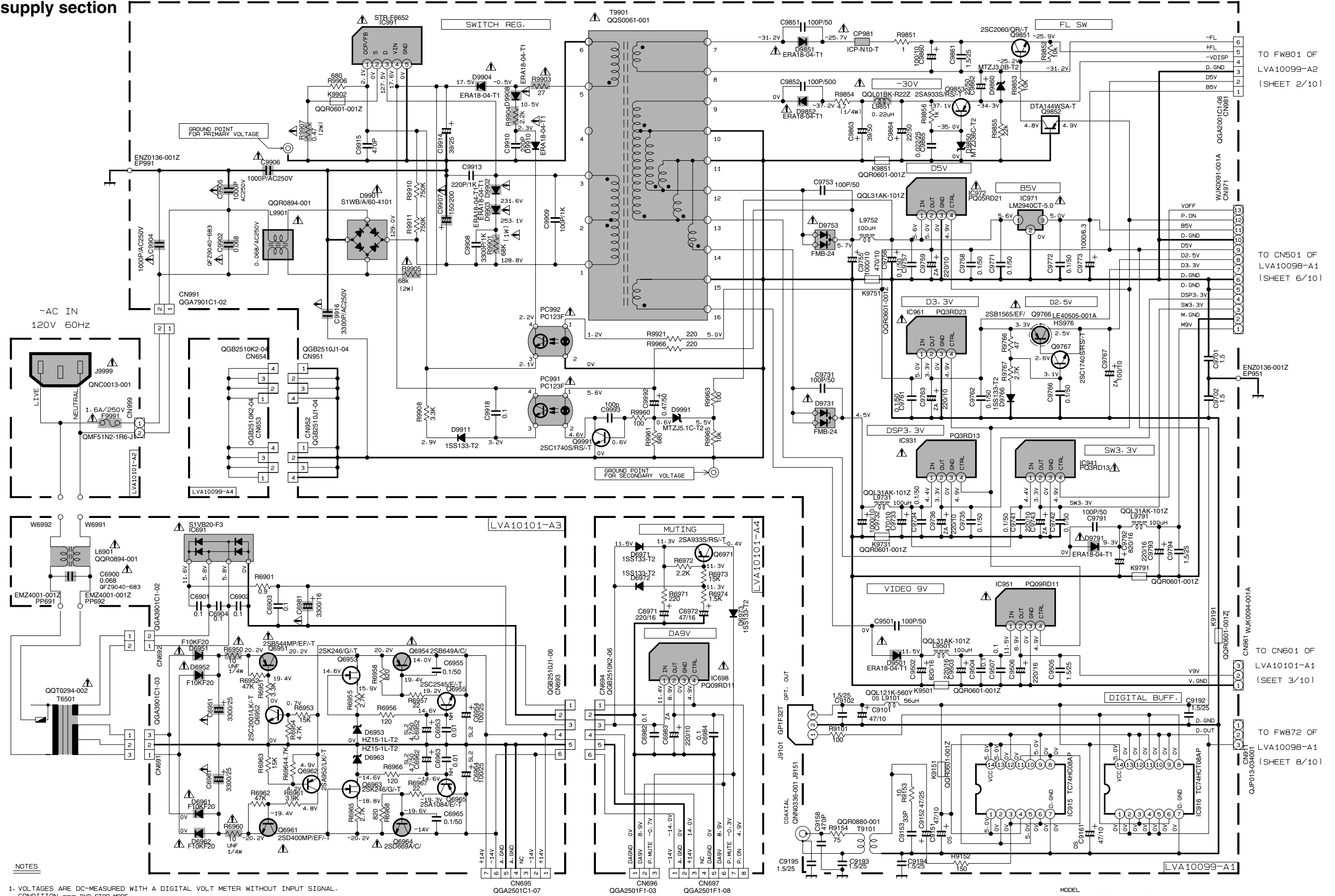
■ Video signal section



■ FL Display section



## ■ Power supply section



NOTES


1. VOLTAGES ARE DC-MEASURED WITH A DIGITAL VOLT METER WITHOUT INPUT SIGNAL.  
CONDITION --- DVD STOP MODE
2. UNLESS OTHERWISE SPECIFIED.
- |   |                    |
|---|--------------------|
| ALL RESISTORS ARE 1/4W $\pm 5\%$ CARBON RESISTOR.                                       | ~ ~ ~ UNFRAMMABLE  |
| ALL RESISTANCE VALUES ARE IN OHM( $\Omega$ ).   | ~ ~ ~ METAL FILM R |
| ALL CAPACITANCE VALUES ARE IN $\mu F$ (P=P $\mu F$ ).                                   | ~ ~ ~ OXIDE METAL  |
| ALL E. CAPACITORS ARE SHOWN IN THE FORM OF<br>CAPACITANCE( $\mu F$ )/RATED VOLTAGE (V). |                    |
| ALL INDUCTANCE VALUES ARE IN $\mu H$ (m=mH).  |                    |

- W- UNFRAMMABLE CARBON RESISTOR
- W- METAL FILM RESISTOR
- W- OXIDE METAL FILM RESISTOR

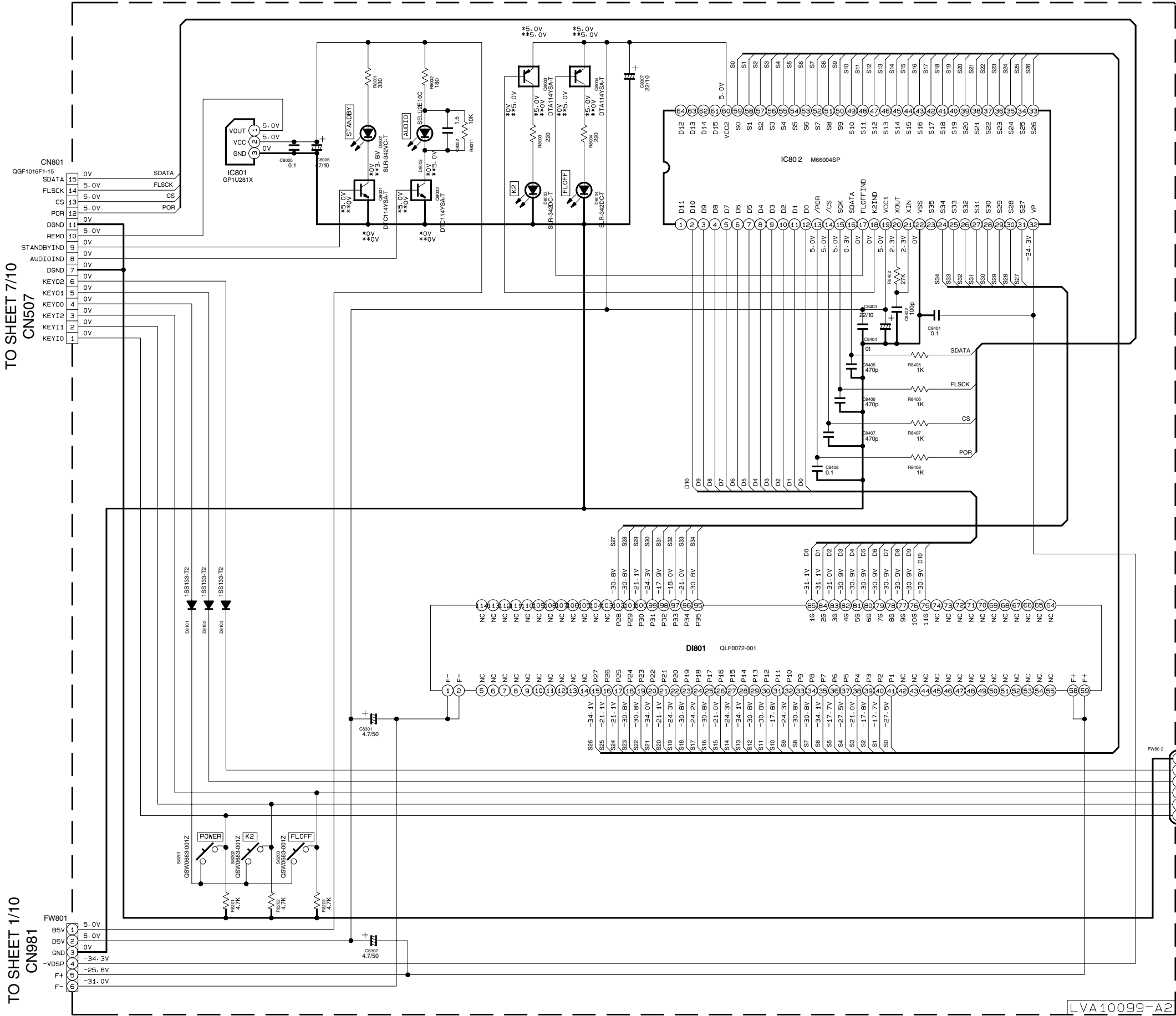
TO FW731 & FW732  
OF LVA10100-A1  
(SHEET 4/10)

TO FW701 OF  
LVA10100-A1  
(SHEET 4/10)

TO FW751 OF  
LVA10100-A2  
(SHEET 5/10)

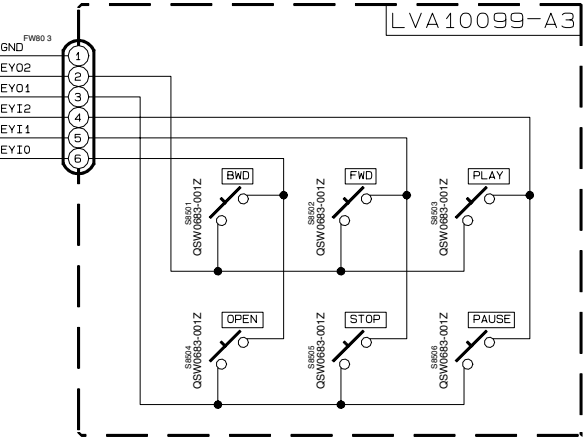
 Parts are safety assurance parts. When replacing those parts make sure to use the specified one.

FL Display section



NOTES

1. VOLTAGES ARE DC-MEASURED WITH A DIGITAL VOLT METER  
CONDITION ---- DVD STOP MODE
2. UNLESS OTHERWISE SPECIFIED.  
ALL RESISTORS ARE 1/4W ±5% CARBON RESISTOR.  
ALL CAPACITORS ARE 50V CERAMIC CAPACITOR OR 50V MYLAR CAPACITOR.  
ALL RESISTANCE VALUES ARE IN OHM(Ω).  
ALL CAPACITANCE VALUES ARE IN μF(P=PF).  
ALL E. CAPACITORS ARE SHOWN IN THE FORM OF  
CAPACITANCE(μF)/RATED VOLTAGE (V).



MODEL

XV-D9000

SHEET 2/10

Video signal section

REF.	Ver.	E	D/J
*L6101	QGR0783-001	QGR0714-001	
*L6301	QGR0713-001	QGR0712-001	
*L6401	QGR0713-001	QGR0712-001	
*C6803	SHORT (R6803)	1.5	
*R6001	1.5K	1.1K	
*R6101	4.7K	3.3K	
*R6201	2.2K	1.2K	
*R6301	2.2K	750	
*R6401	2.2K	750	
*R6114	4.3K	3.9K	
*R6303	1K	2.2K	
*R6403	1K	2.2K	
*R6307	1K	2.2K	
*R6407	1K	2.2K	
*C6303	100/10	27/35	
*C6403	100/10	27/35	
*C6304	330/10	220/6.3	
*C6404	330/10	220/6.3	

TO CN503 OF  
LVA10098-A1  
SHEET 9/10

TO CN502 OF  
LVA10098-A1  
SHEET 9/10

TO CN961 OF  
LVA10099-A1  
SHEET 1/10

NOTES  
1. VOLTAGES ARE DC-MEASURED WITH A DIGITAL VOLT METER  
CONDITION: — DND STOP MODE  
2. UNLESS OTHERWISE SPECIFIED,  
ALL RESISTORS ARE 1/4W ±5% CARBON RESISTOR.  
ALL RESISTANCE VALUES ARE IN OHM(Ω).  
ALL CAPACITANCE VALUES ARE IN μF(μF).  
ALL E-CAPACITORS ARE SHOWN IN THE FORM OF  
CAPACITANCE(μF)/RATED VOLTAGE (V).

EXCEPT E Ver.

EXCEPT E-J Ver.

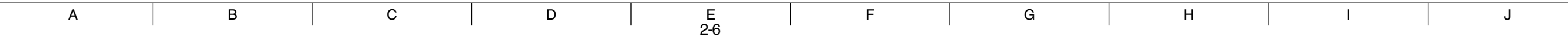
EXCEPT E-J Ver.

Parts are safety assurance parts.  
When replacing those parts make  
sure to use the specified one.

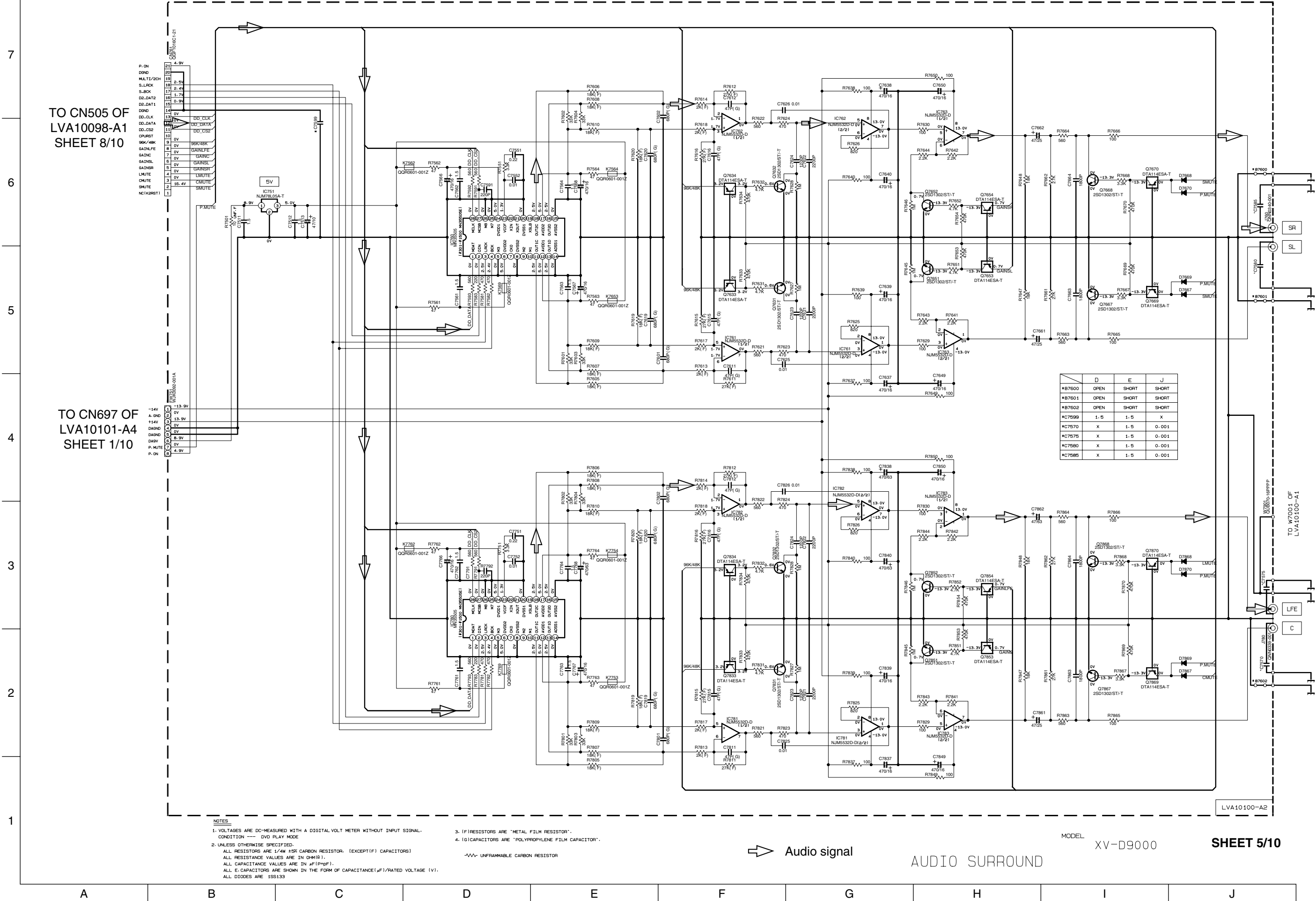
Video signal

MODEL XV-D9000

SHEET 3/10



Audio (rear,center.sub woofer) section



DVD Servo control section

REF	W/F	D	E	J
W151	0	0	0	F.B.
W152	0	0	0	F.B.
W153	0	0	0	F.B.
W154	0	0	0	F.B.

F.B.: Ferrite Beads

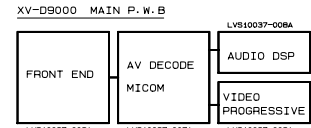
FROM CN11 OF  
LVA10046  
SHEET 10/10

FROM  
FLM-V3

FROM CN971 OF  
LVA10099-A1  
SHEET 1/10

OGA2001C2-13X  
CN501

LVA10098-A1



NOTES  
1. VOLTAGES ARE DC-MEASURED WITH A DIGITAL VOLT METER  
2. UNLESS OTHERWISE SPECIFIED:  
ALL RESISTORS ARE 1/4W 400V METAL GLAZE RESISTOR.  
ALL CAPACITORS ARE 50V CERAMIC CAPACITOR OR 50V MYLAR CAPACITOR.  
ALL RESISTANCE VALUES ARE IN OHMS.  
ALL CAPACITANCE VALUES ARE IN pF(PF).  
ALL CAPACITORS ARE SHOWN IN THE FORM OF CAPACITANCE/(RATED VOLTAGE (V)).  
ALL INDUCTANCE VALUES ARE IN mH(MH).

Digital data signal

MODEL  
XV-D9000

SHEET 6/10

TO SHEET 7/10

TO SHEET 7/10

SERV03  
SERV02  
SERV01  
FEP  
DRIVER  
POWER  
MECHA

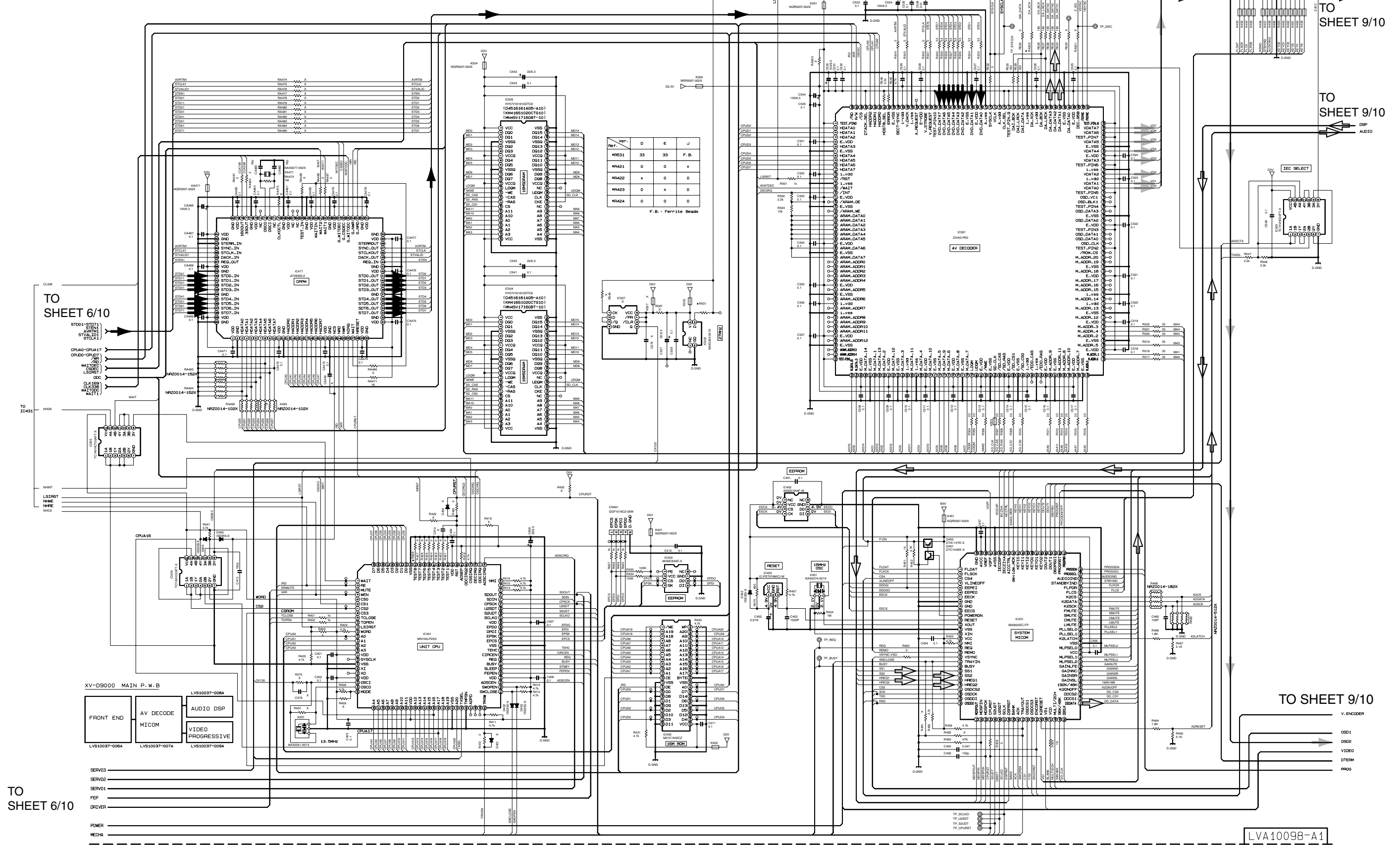


## ■ AV Decoder and system controller section

TO CN801  
SHEET 2/10

[illegible]

TO  
SHEET 9/10



TO  
SHEET 6/10

TO SHEET 9/10

MODEL XV-D9000

**SHEET 7/10**

LVA10098-A1

## ■ Audio DSP section

TO  
SHEET 7/10TO  
SHEET 7/10

⇒ Audio signal

NOTES

1. VOLTAGES ARE DC-MEASURED WITH A DIGITAL VOLT METER CONDITION — DND STOP MODE

2. UNLESS OTHERWISE SPECIFIED:

ALL RESISTORS ARE 1/8W FOR METAL GLAZE RESISTOR.

ALL CAPACITORS ARE 50V CERAMIC CAPACITOR OR 50V SILICONE CAPACITOR.

ALL RESISTANCE VALUES ARE IN OHMS (Ω).

ALL CAPACITANCE VALUES ARE IN PICO-FARADS (pF).

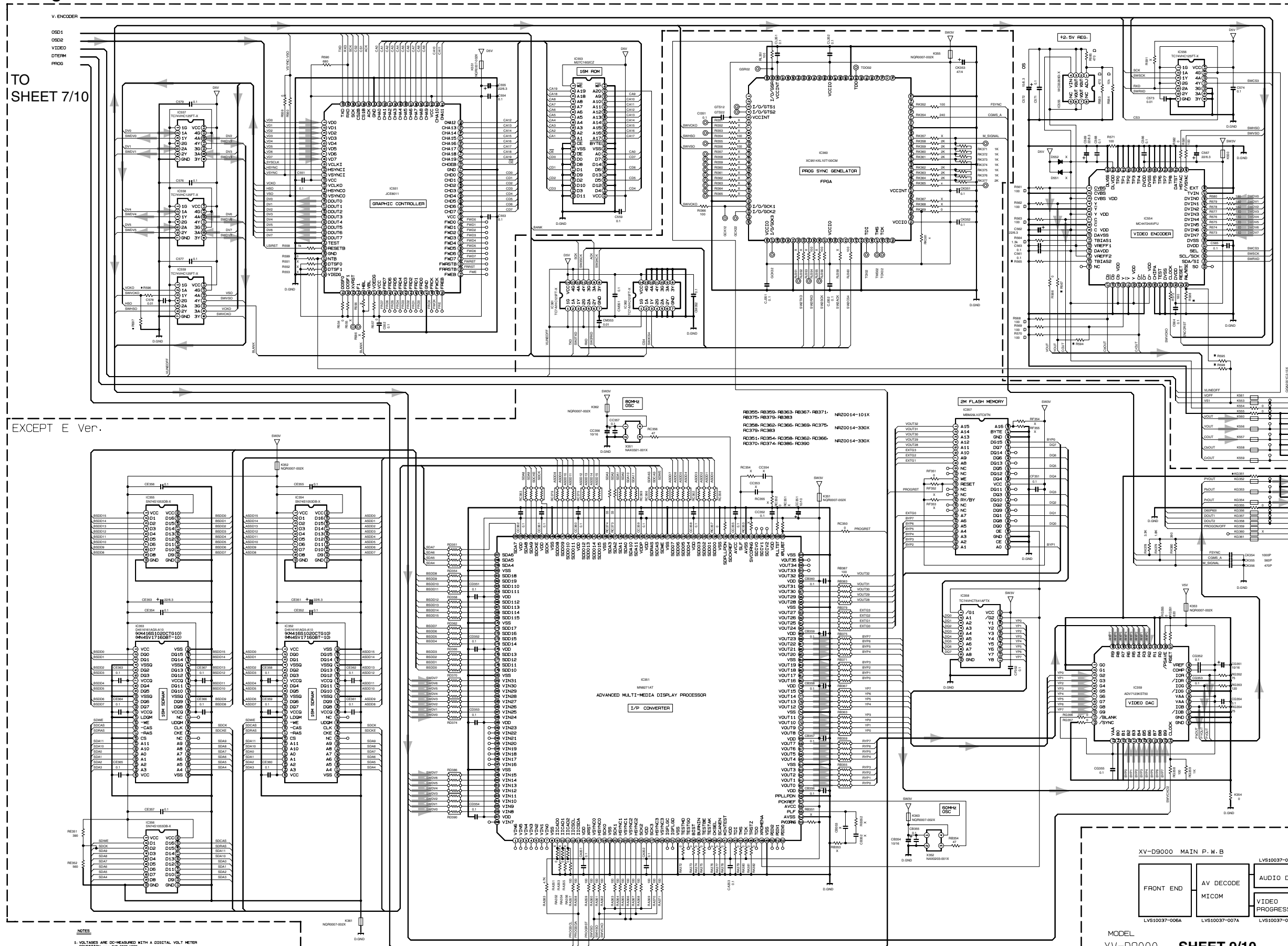
ALL INDUCTANCE VALUES ARE IN MILLI-HENRIES (mH).

Ver.	D	E	J
*R1168	220	F.B.	220
*R1169	47	F.B.	F.B.
*KE162	0	0	F.B.
*KE163	0	F.B.	F.B.
*KE164	0	F.B.	F.B.
*KE165	0	F.B.	F.B.
*KE166	0	F.B.	F.B.

FROM CN761 OF  
LVA10100-A2  
(SHEET 5/10)FROM CN711 OF  
LVA10145-A1  
(SHEET 4/10)

XV-D9000 SHEET 8/10

Video signal section

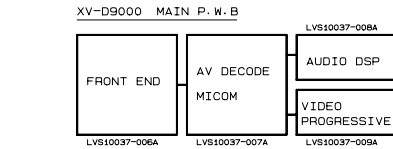


REF.	D	E	J
#P567	0	X	0
#P564	X	0	X
#P565	X	0	X
#P568	X	0	X
#P569	0	X	0
#P568	0	X	0
#K351	0	0	F.B.
#P566	330	330	F.B.
#P597	680	680	X

FROM CN602 OF  
LVA10101-A1  
(SHEET 3/10)

FROM CN603 OF  
LVA10101-A1  
(SHEET 3/10)

- NOTES
1. VOLTAGES ARE DC-MEASURED WITH A DIGITAL VOLT METER  
CONDITION — 50% RISE TIME
  2. UNLESS OTHERWISE SPECIFIED:  
ALL RESISTORS ARE 1/4W 1% METAL GLAZE RESISTOR.  
ALL CAPACITORS ARE 50V CERAMIC CAPACITOR OR 50V MYLAR CAPACITOR.  
ALL RESISTANCE VALUES ARE IN OHMS (Ω).  
ALL CAPACITANCE VALUES ARE IN PICO-FARADS (pF).  
ALL CAPACITORS ARE SHOWN IN THE FORM OF CAPACITANCE/PI-RATED VOLTAGE (V).  
ALL INDUCTANCE VALUES ARE IN MICROHENRIES (μH).

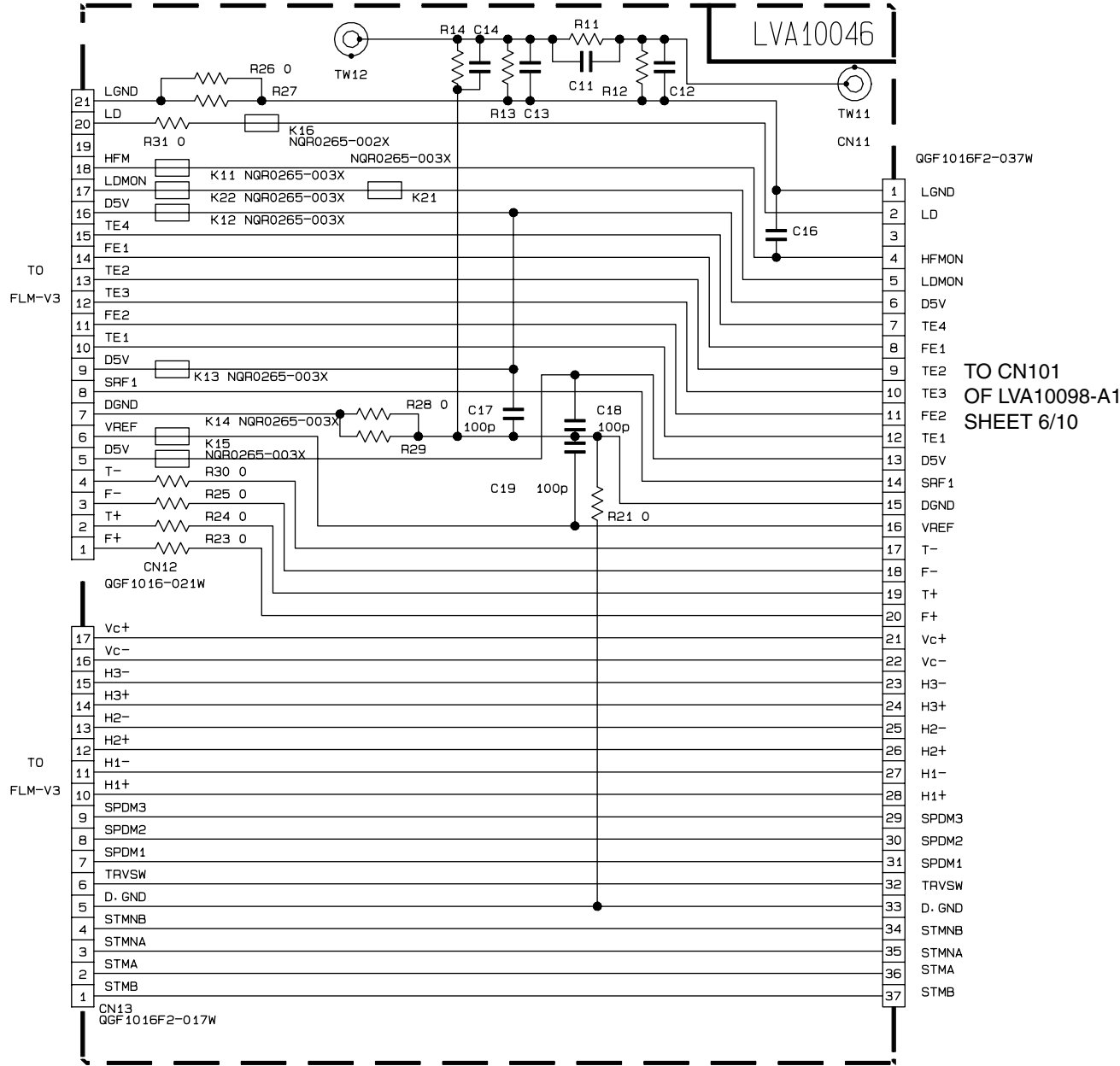


MODEL  
XV-D9000

SHEET 9/10

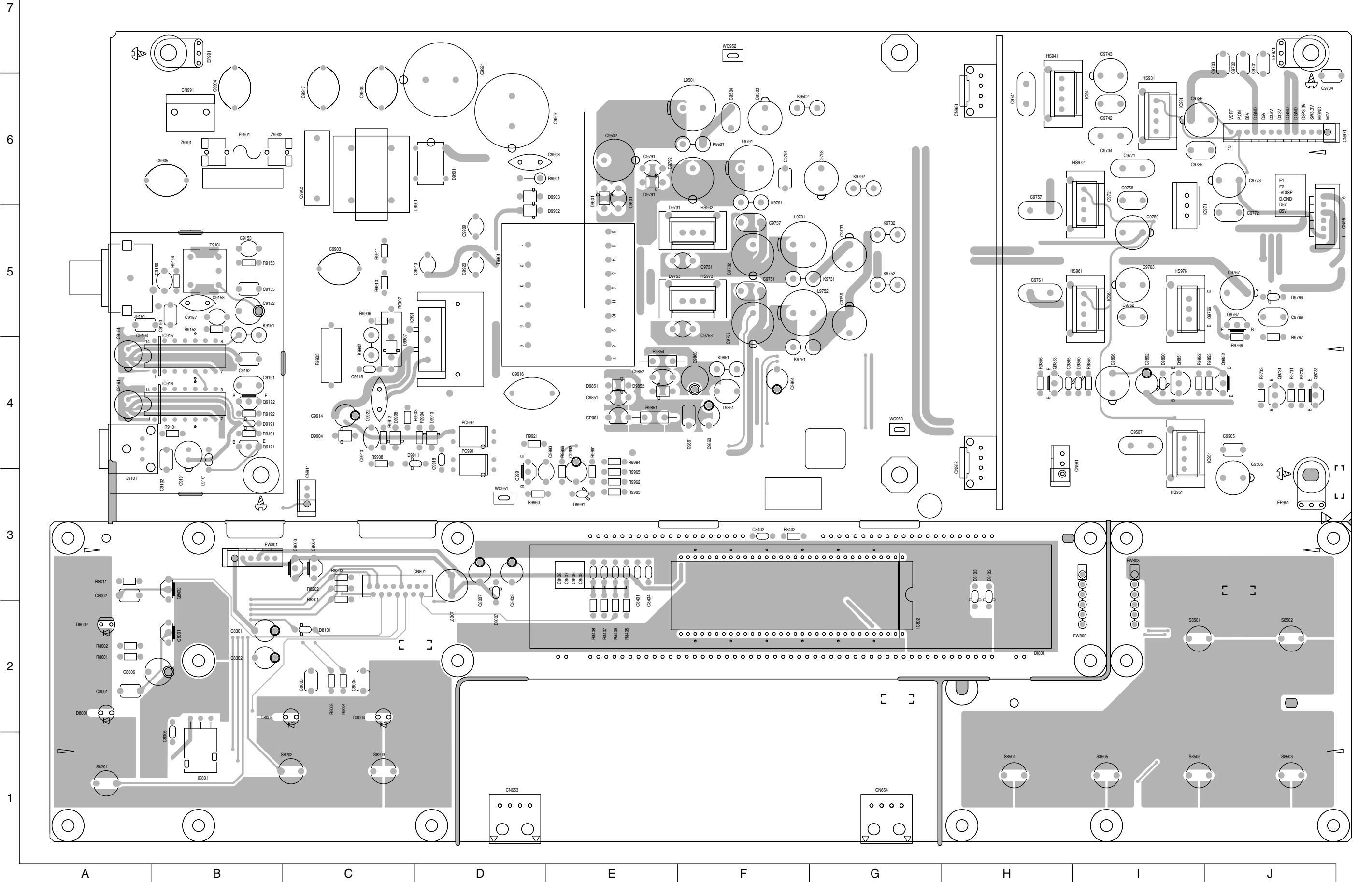
Video signal

■ Connect section

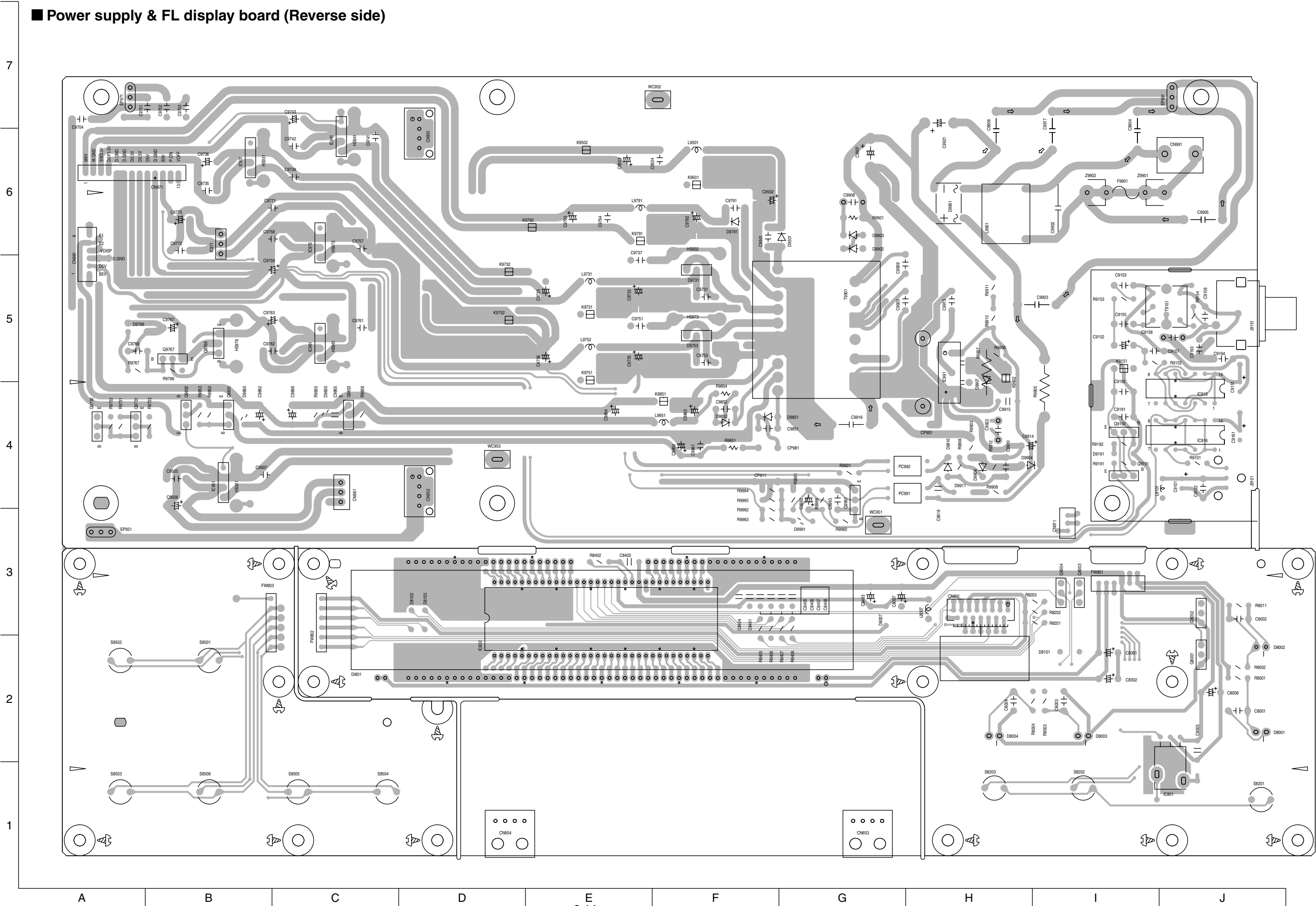


Printed circuit boards

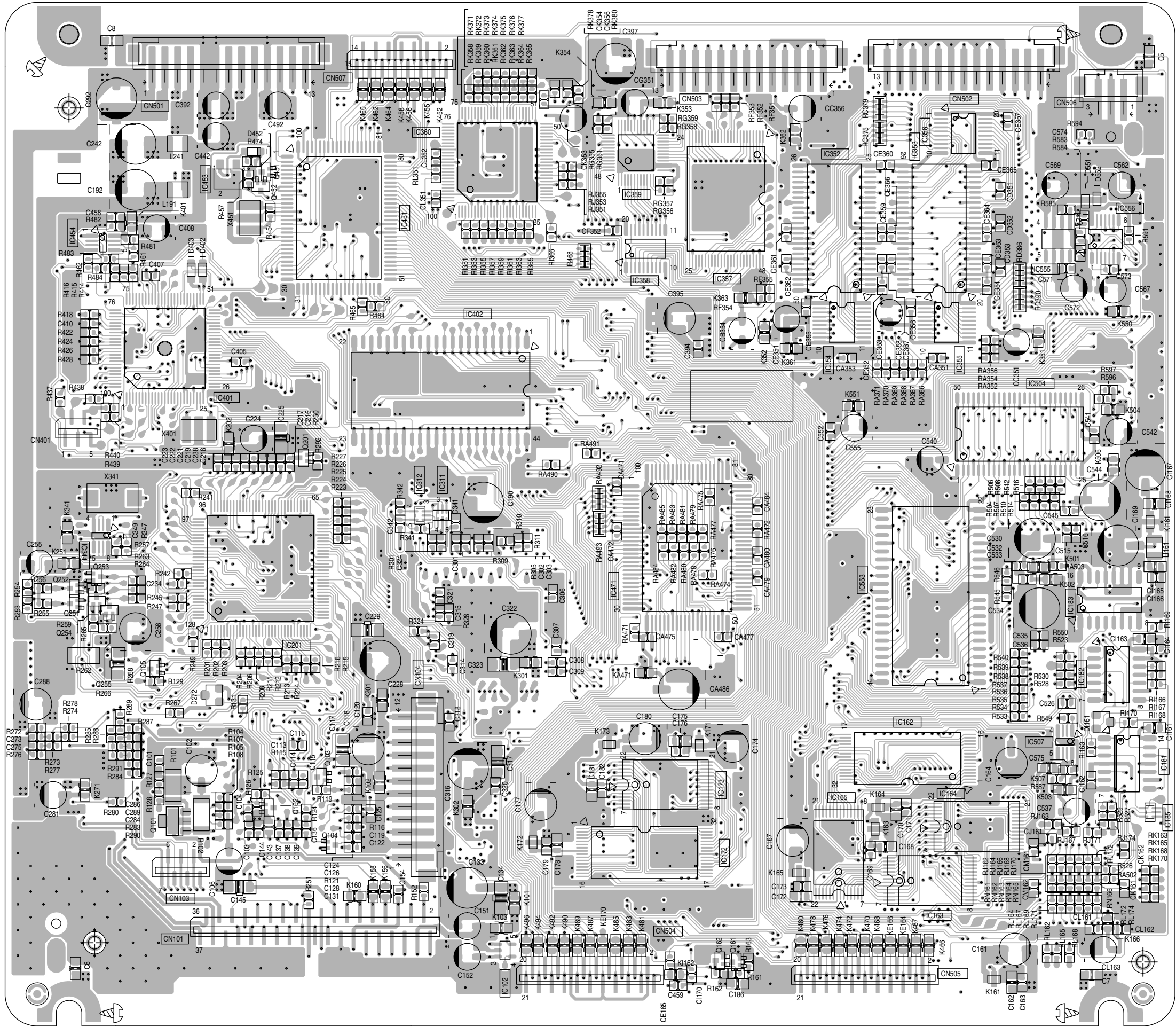
■ Power supply & FL display board (Forward side)



■ Power supply & FL display board (Reverse side)



■ Main board (forward side)



A

B

C

D

E

F

G

H

I

J

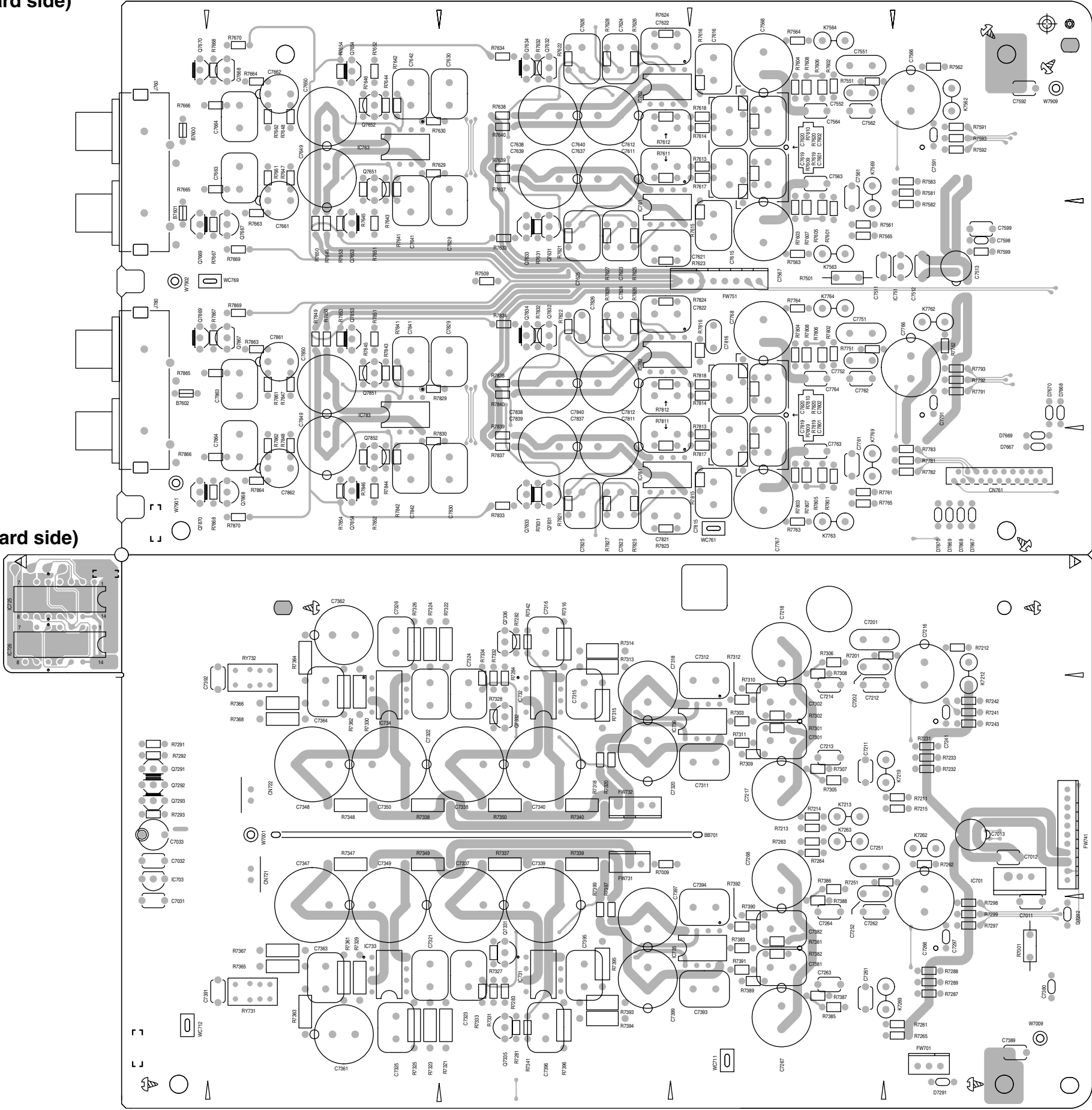






■ Audio-rear board (forward side)

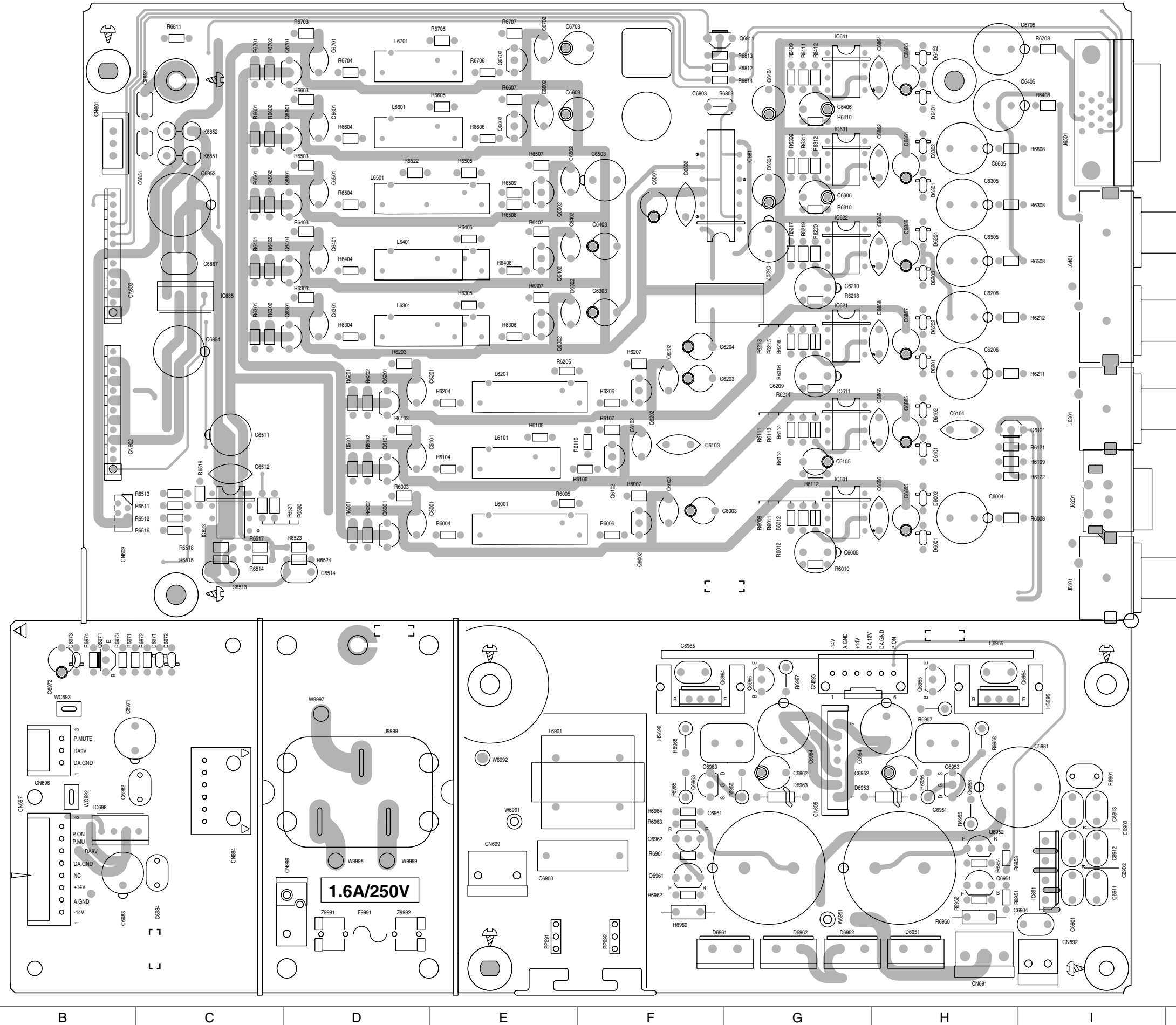
■ Audio-front board (forward side)



### ■ Audio-front board (reverse side)



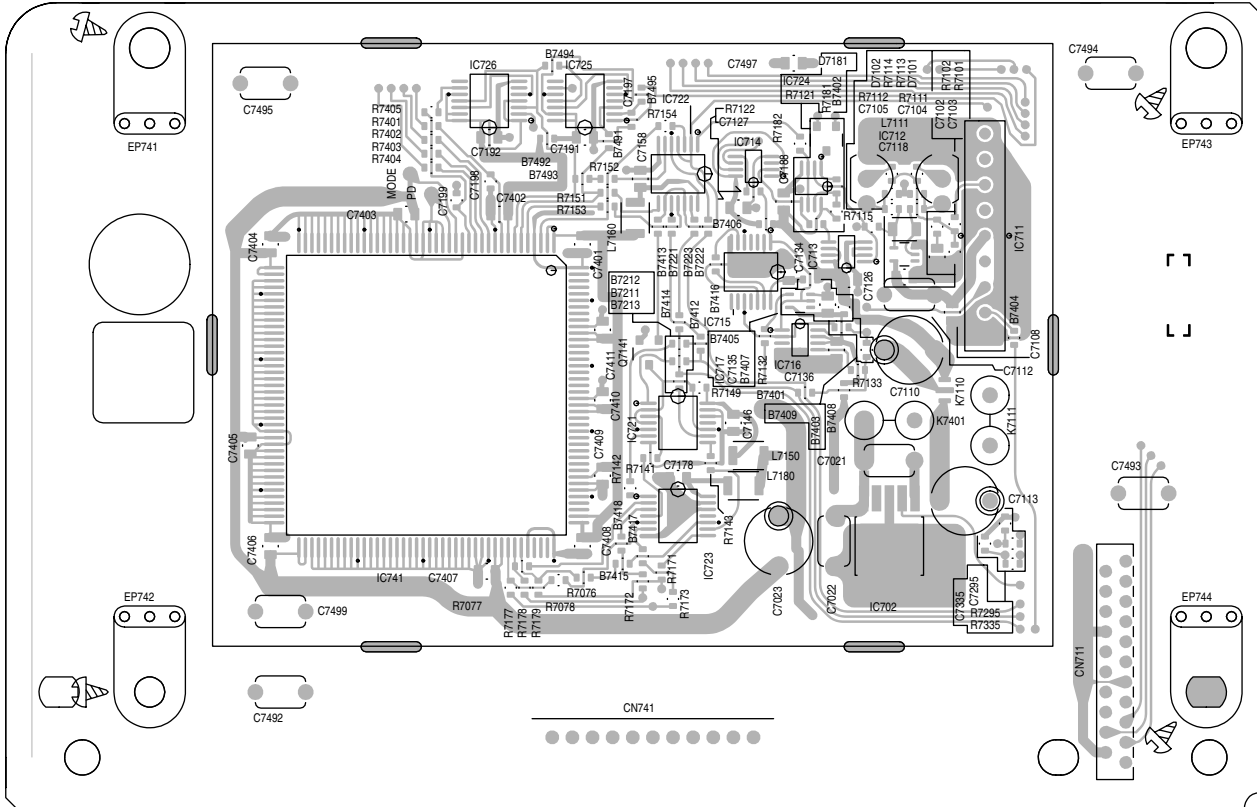
### ■ Video signal board (forward side)



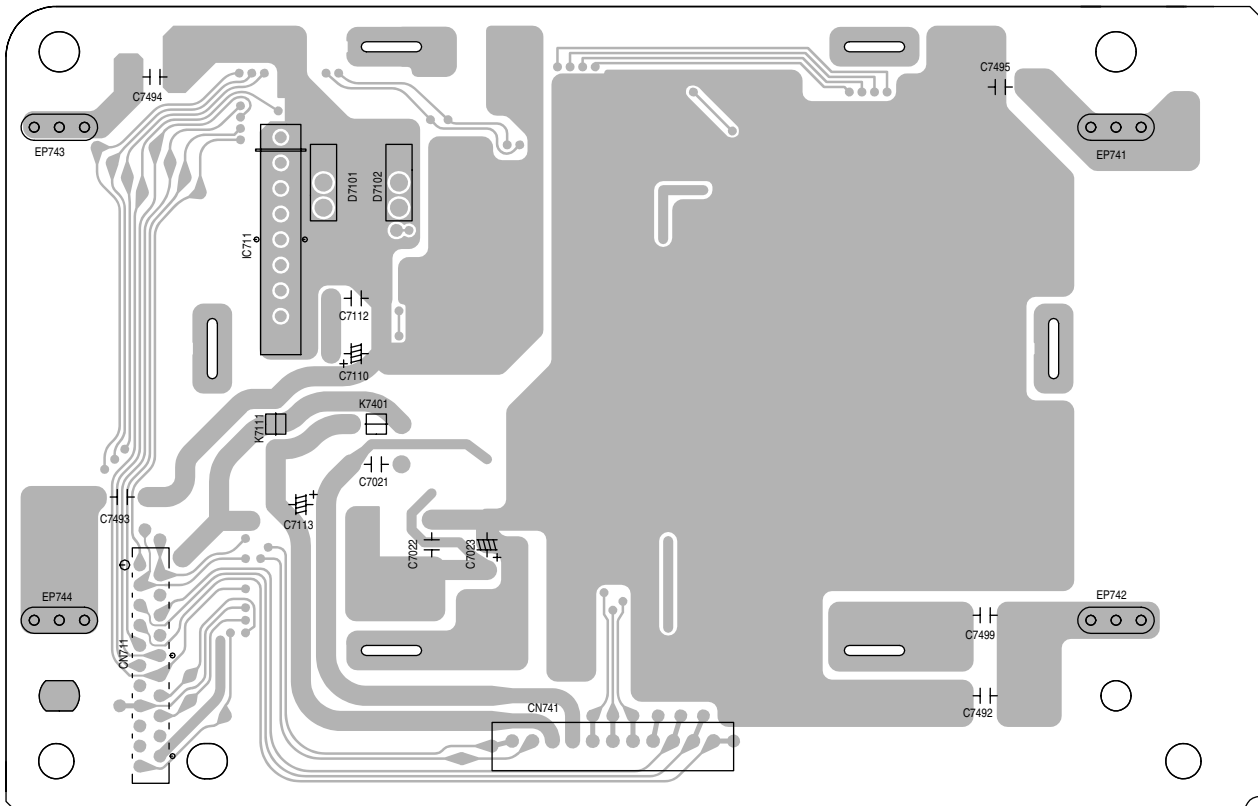


■ K2 Board

(Forward side)

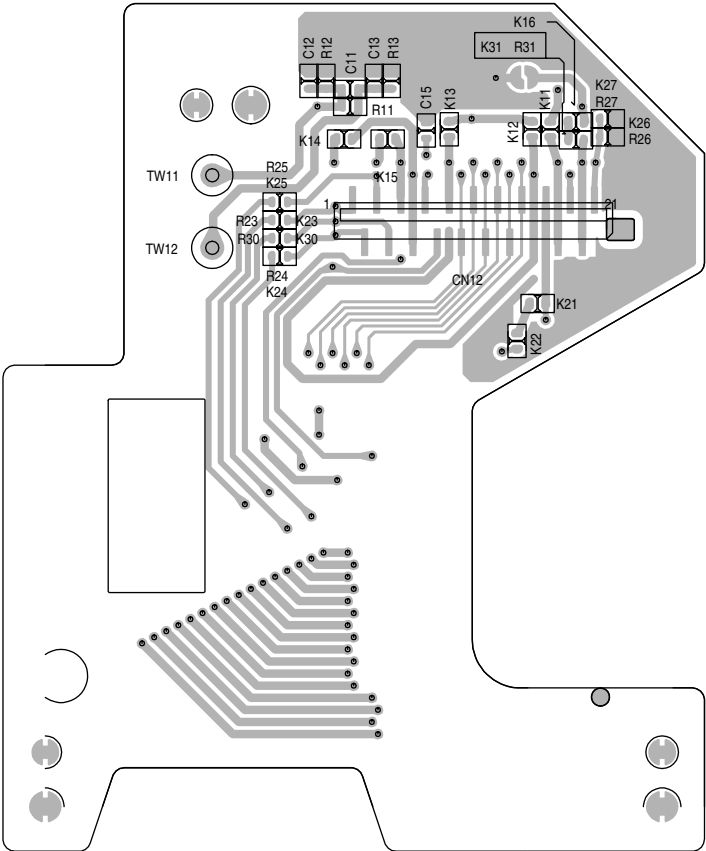


(Reverse side)



■ Mechanism board

(forward side)



(reverse side)

