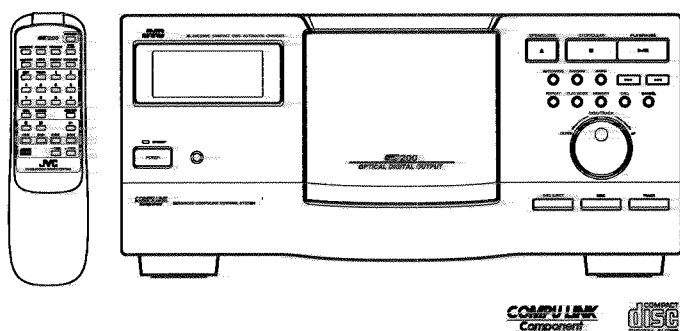


# JVC

# SERVICE MANUAL

## COMPACT DISC AUTOMATIC CHANGER

# XL-MC2000BK



### Area Suffix

C	-----	Canada
J	-----	U.S.A

Regarding XL-MC222BK

1. An additional digital output circuit has been included.
2. Due to the additional digital output circuit, the board diagrams (main, jack, CDs) and other related circuit diagrams have been revised.
3. Disassembly and packaging diagrams have been revised also.  
When servicing this unit, please refer to the XL-MC222BK (No. 20643) service manual, which has been issued previously.

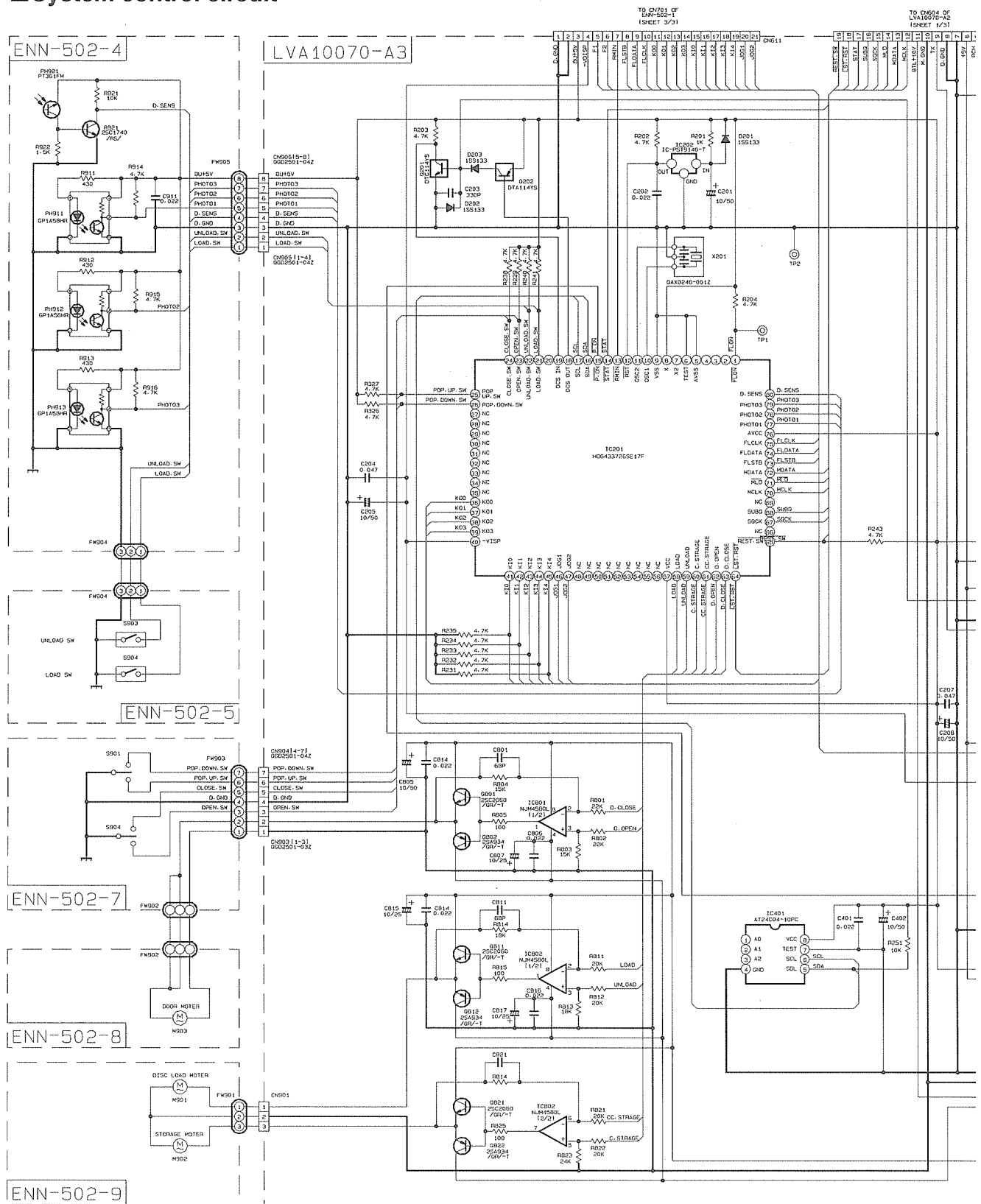
## Contents

Standard schematic diagram .....	1-3
P.C.board .....	1-6
Parts list .....	2-1

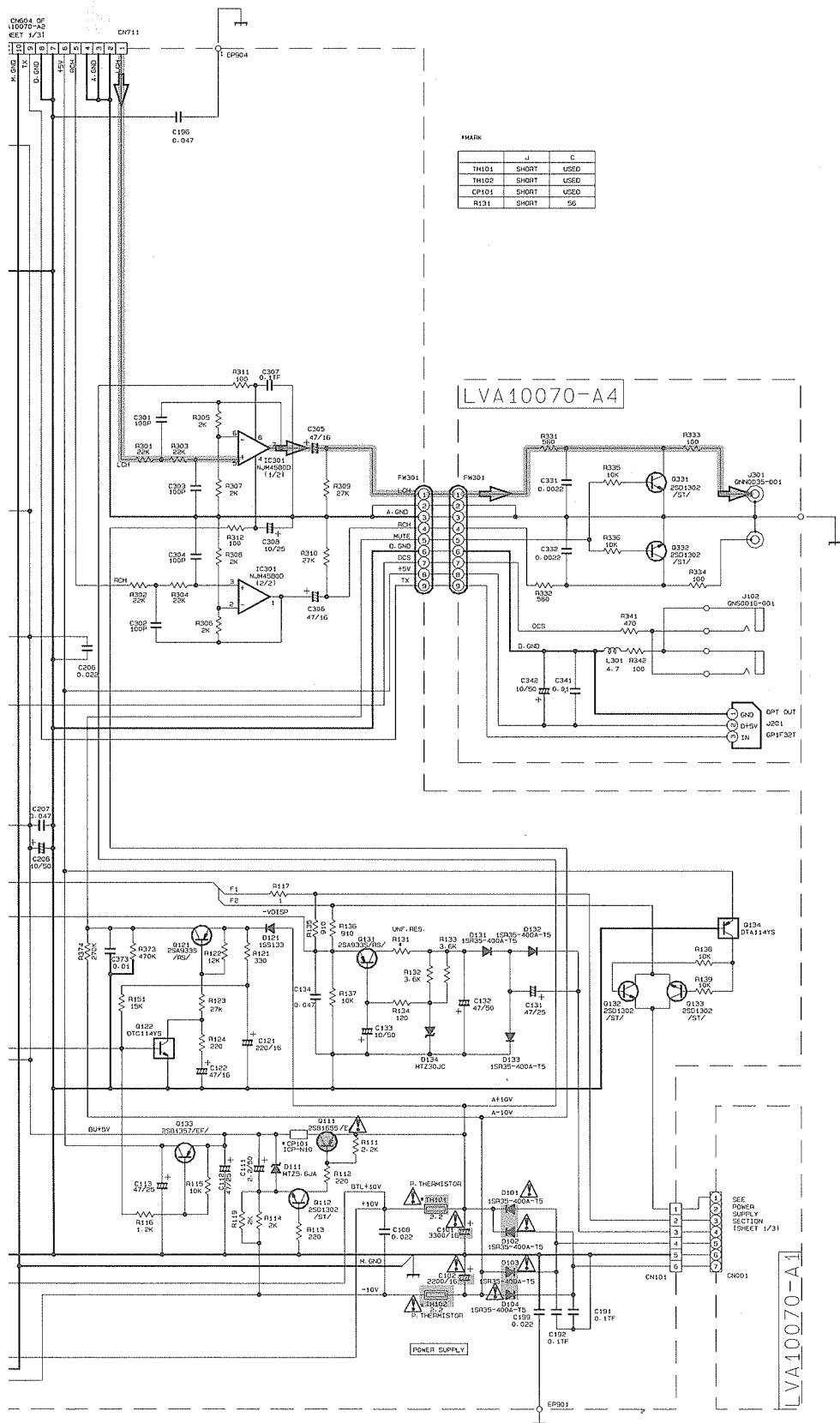
**-MEMO-**



### ■ System control circuit



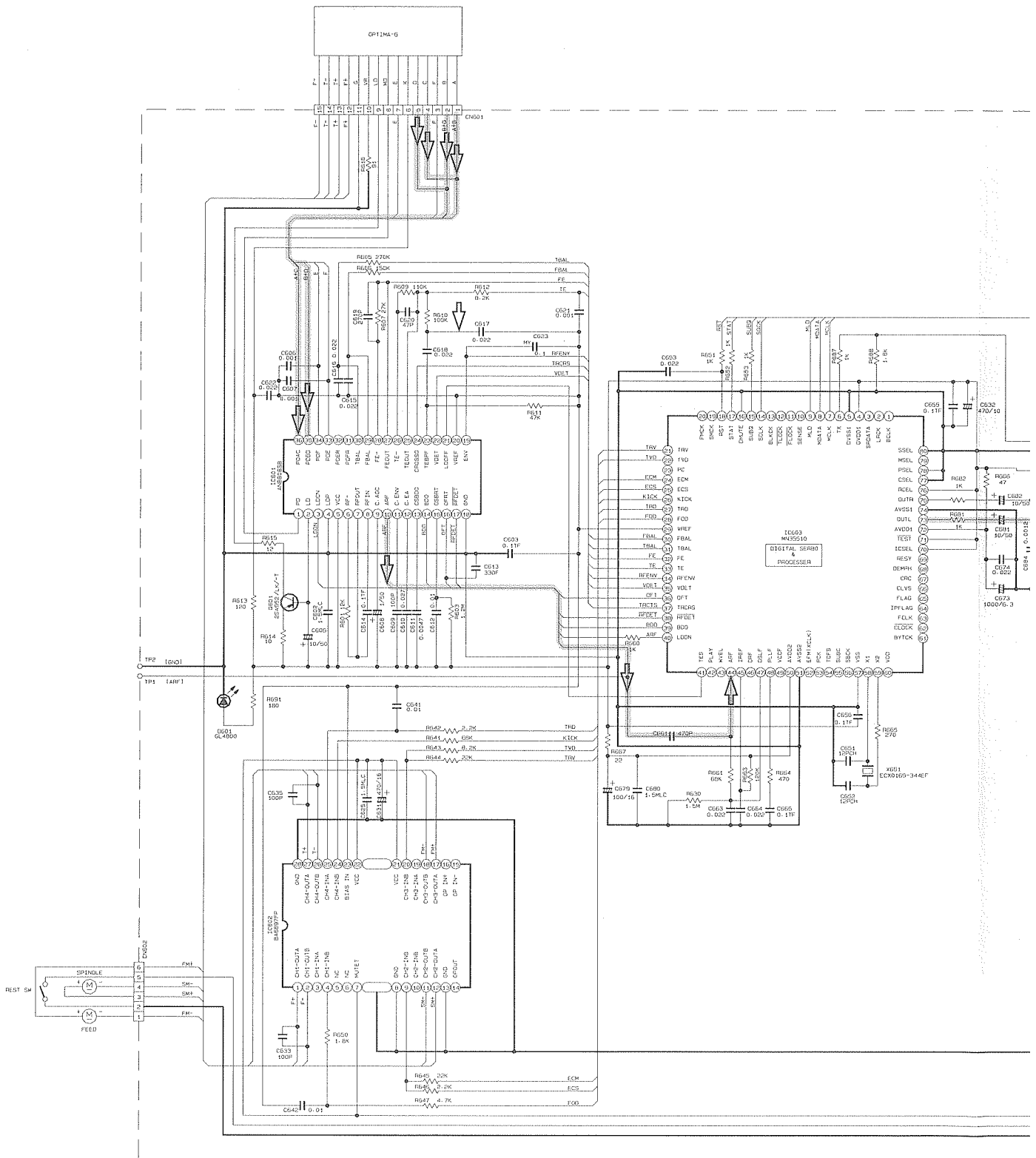
Note : LVS10027001A



➡ CD SIGNAL

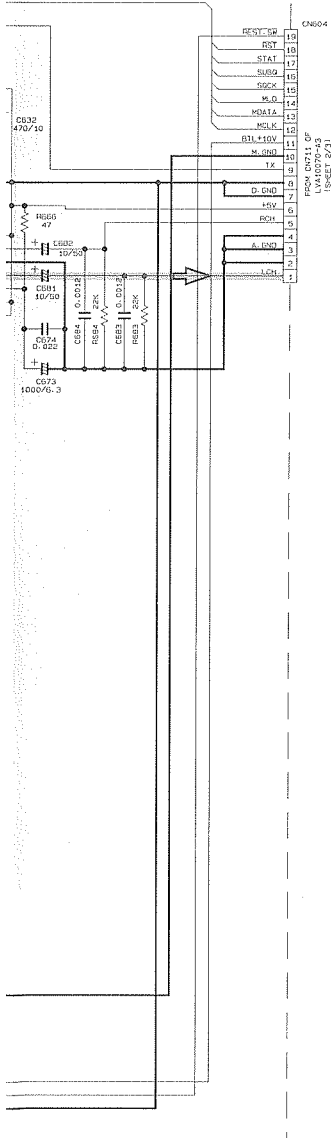
⚠ Parts are safety assurance parts.  
When replacing those parts make  
sure to use the specified one.

■ Digital servo circuit

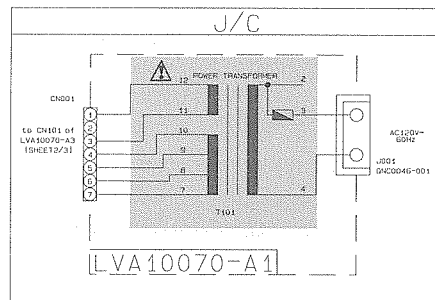


Note : LVS10027002A

LVA10070-A2

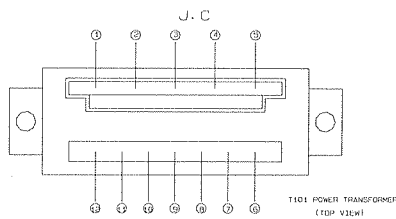


## POWER SUPPLY SECTION



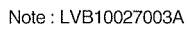
### VERSION CODES

J : U. S. A  
C : CANADA



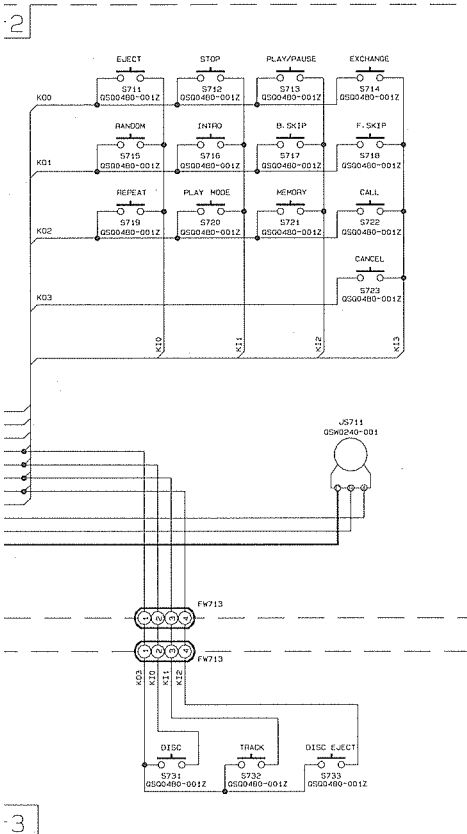
➡ CD SIGNAL

⚠ Parts are safety assurance parts.  
When replacing those parts make  
sure to use the specified one.



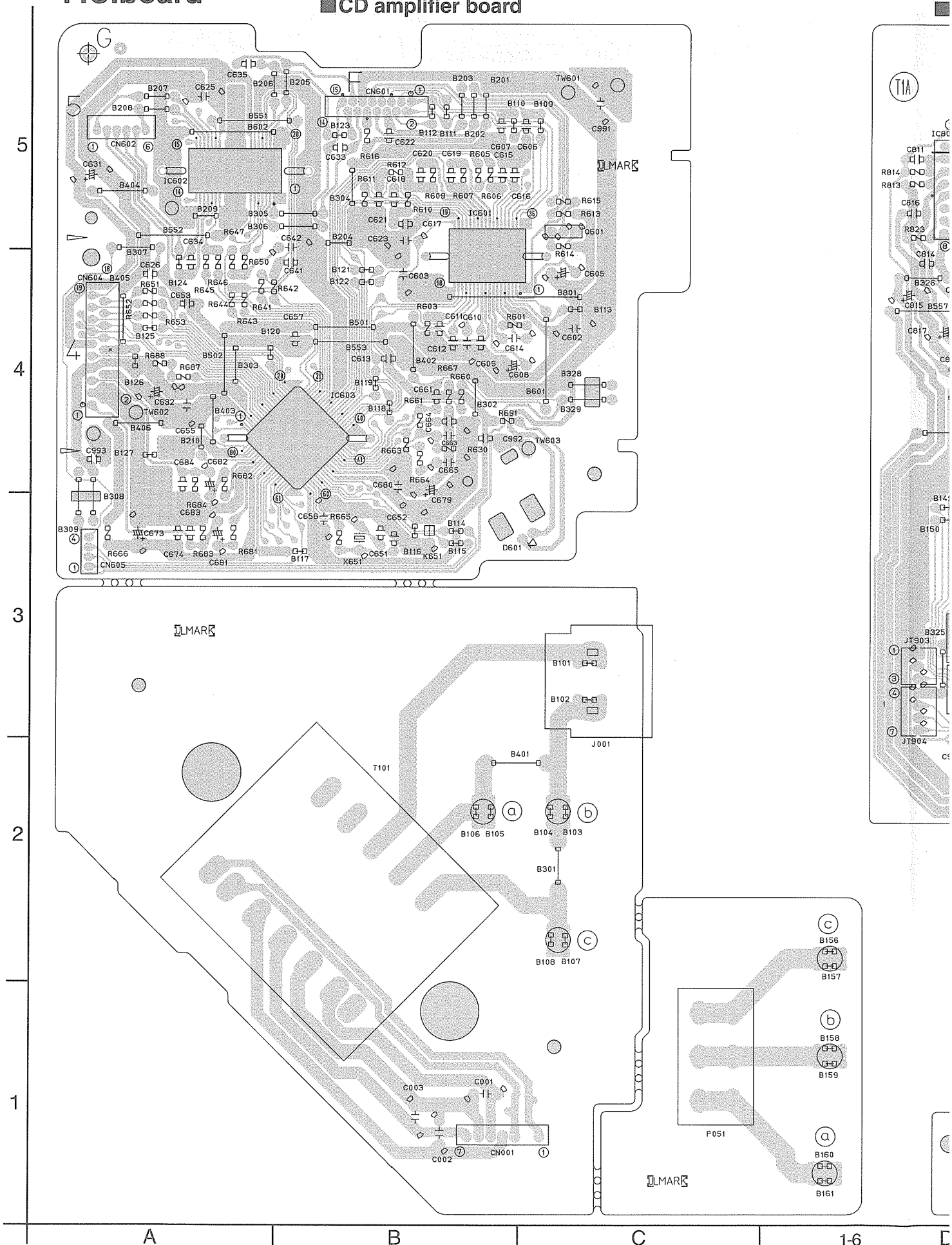
FROM CNS11 OF  
LVA10070-A3  
(SHEET 2/3)



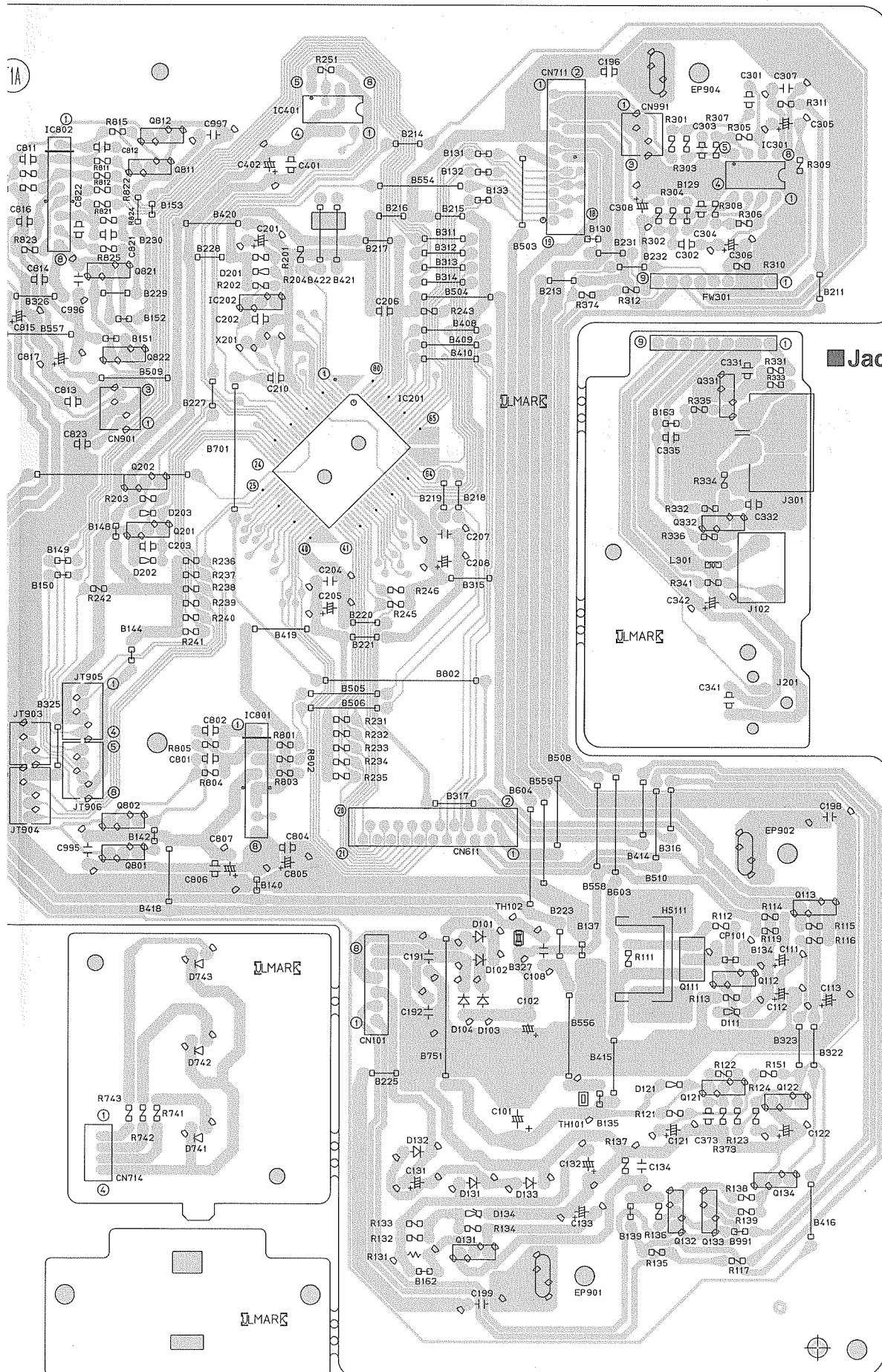


P.C.board

CD amplifier board



## 1A



## ULMAR®

D	E	F	G	H
---	---	---	---	---



# PARTS LIST

[ XL-MC2000BK]

\* All printed circuit boards and its assemblies are not available as service parts.

## Areas suffix

J ----- U.S.A.  
C ----- Canada

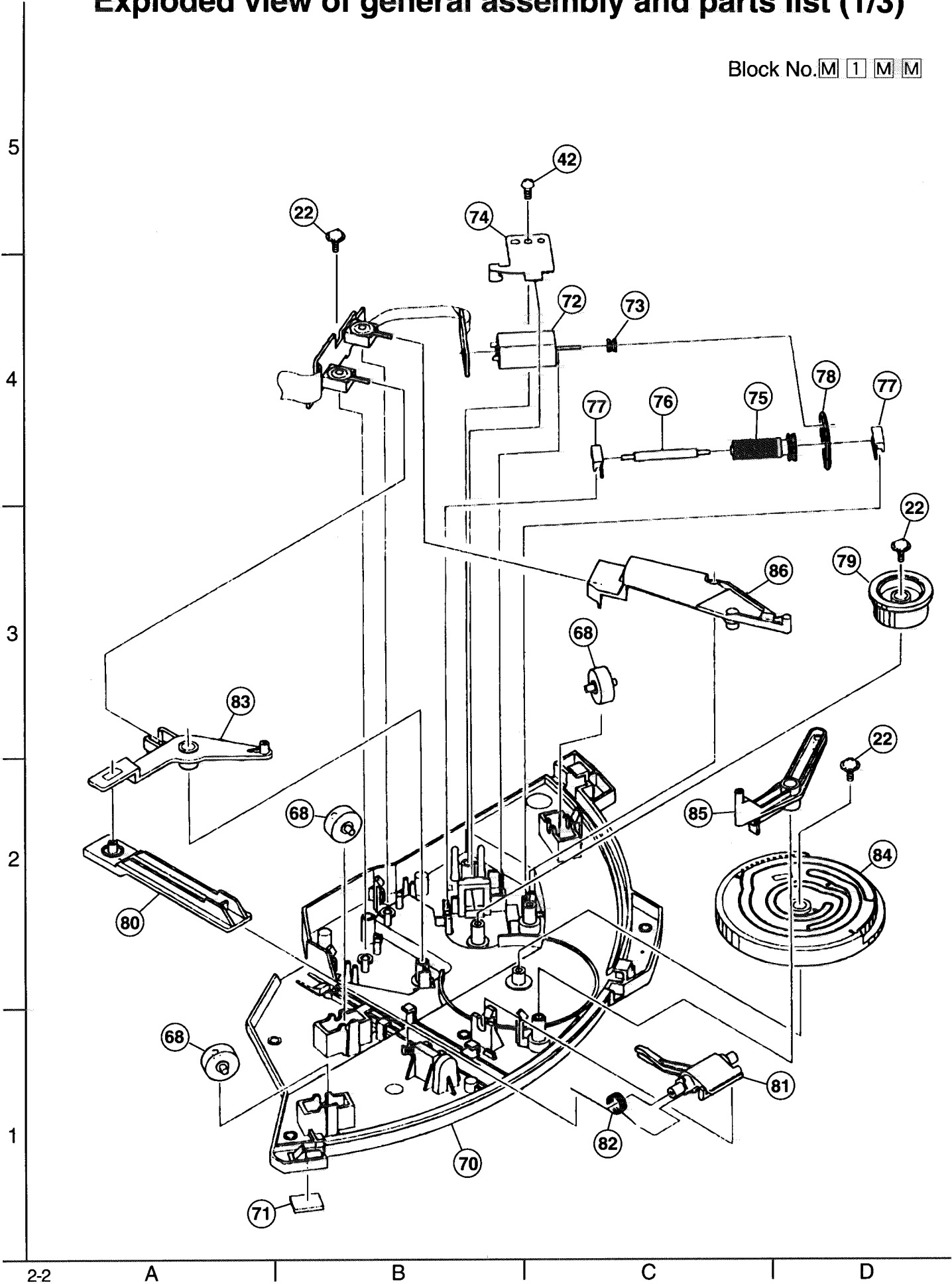
## - Contents -

Exploded view of general assembly and parts list .....	2-2
CD mechanism assembly and parts list .....	2-8
Electrical parts list .....	2-9
Packing materials and accessories parts list .....	2-13

Exploded view of general assembly and parts list (1/3)

Block No. 

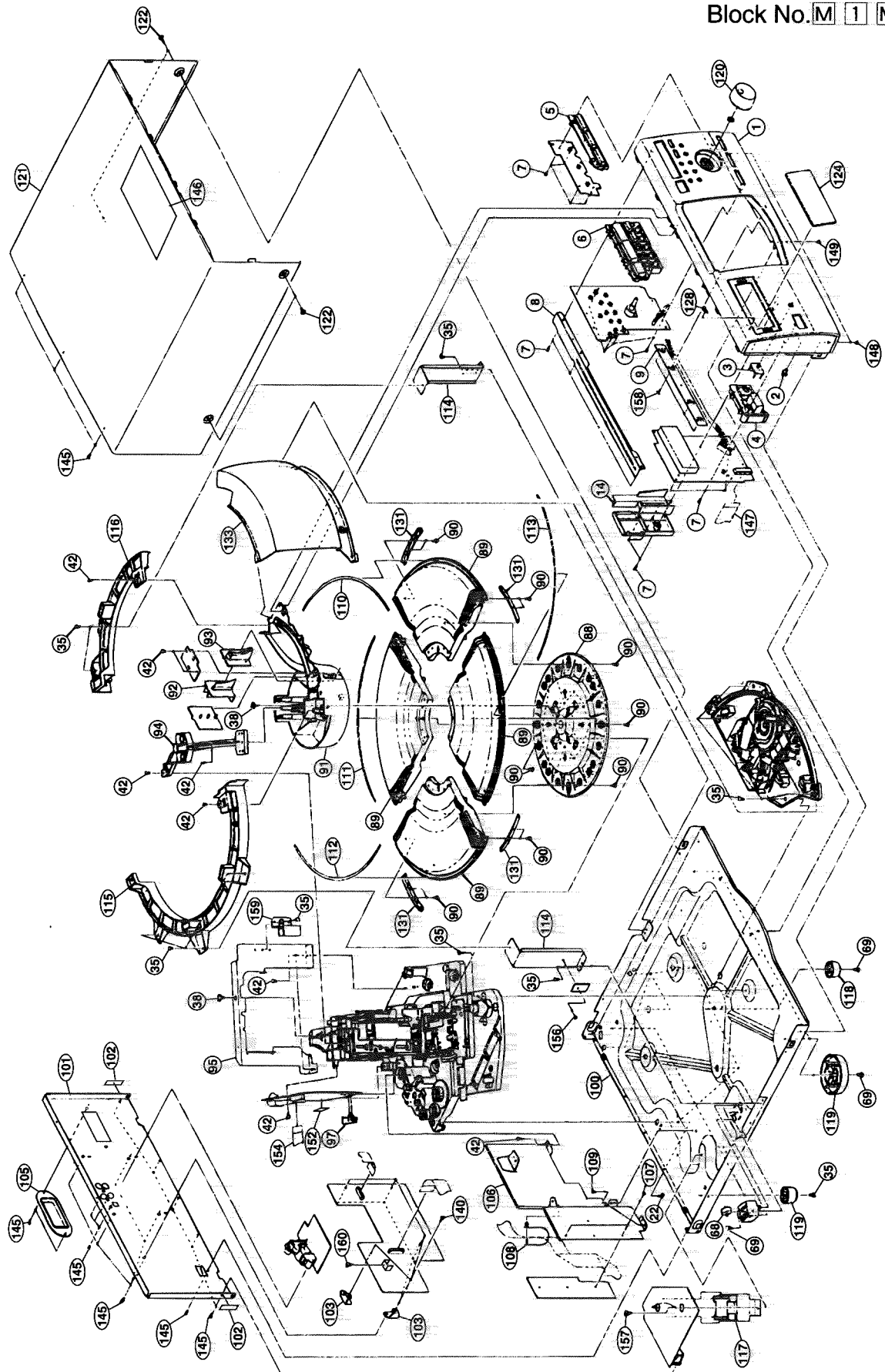
M	1	M	M
---	---	---	---



# Exploded view of general assembly and parts list (2/3)

Block No. 

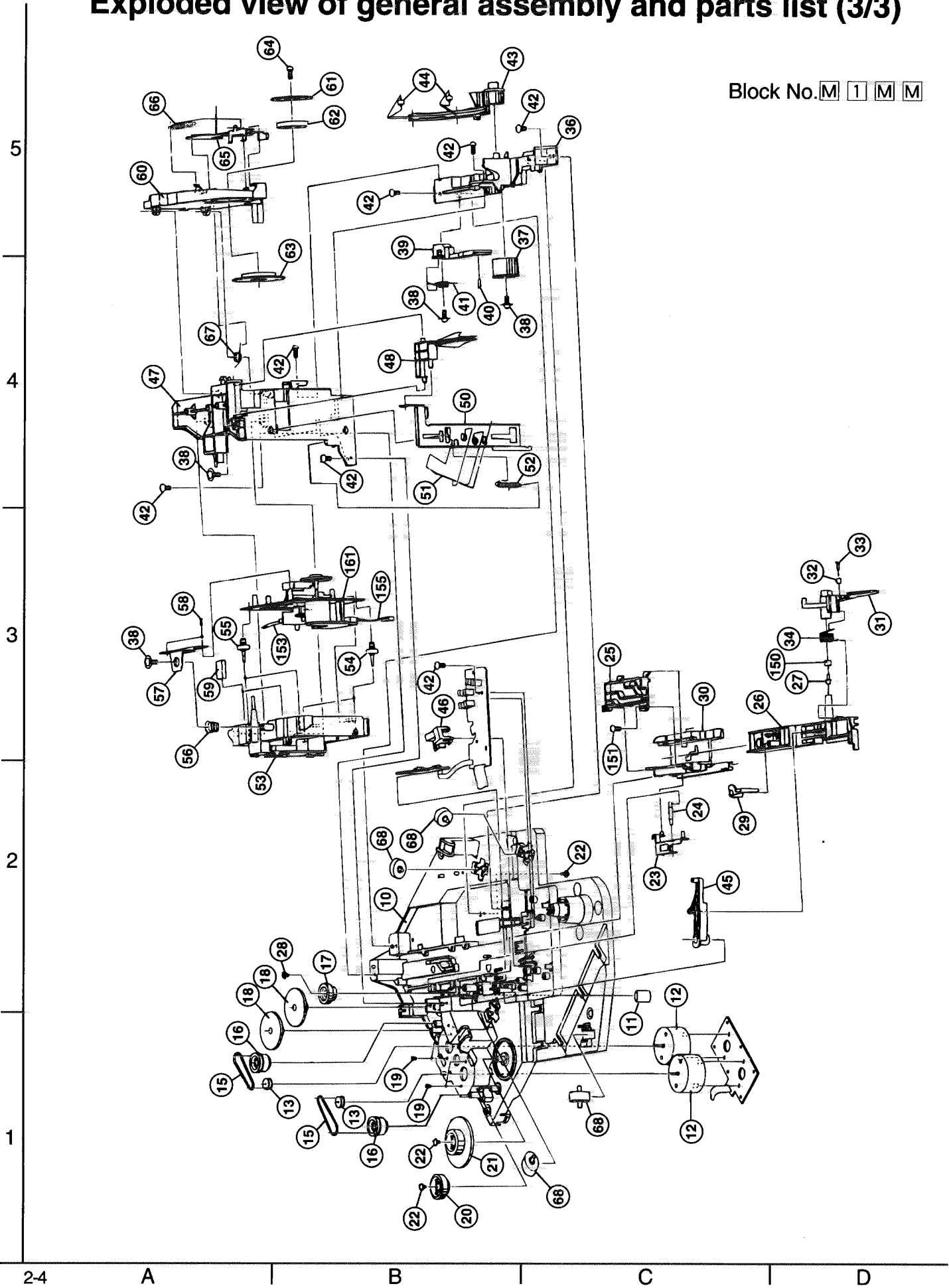
M	1	M	M
---	---	---	---



Exploded view of general assembly and parts list (3/3)

Block No. 

M	1	M	M
---	---	---	---





## ■ Parts list (General assembly)

Block No. **M** **1** **M** **M**

△	Item	Parts number	Parts name	Q'ty	Description	Area
△	1	LE10123-009A	FRONT PANEL	1		
	2	E409509-001	INDICATOR	1		
	3	E308744-002	REMOTE LENS	1		
	4	LE30481-001A	PUSH BUTTON	1	POWER	
	5	LE20267-001A	PUSH BUTTON	1	DISC	
	6	LE20269-001A	PUSH BUTTON	1	PLAY	
	7	QYSDSF2608Z	SCREW	18		
	8	LE20271-001A	FRONT BKT	1		
	9	LE30489-001A	WIRE COVER	1		
	10	LE10094-001A	MECHA BASE	1		
	11	LE40177-002A	PIN	1		
	12	RF-500TB-14415	MOTOR	2		
	13	E75984-222SS	MOTOR PULLEY	2		
	14	LE30486-002A	C.B. COVER	1		
	15	E75950-002	BELT	2		
	16	E409142-002	GEAR(1)	2		
	17	LE40151-001A	D.GEAR 1	1		
	18	LE40152-001A	D.GEAR 2	2		
	19	QYSPSP2604Z	SCREW	4		
	20	LE40161-001A	S.GEAR 1	1		
	21	LE40162-001A	S.GEAR 2	1		
	22	QYSBSFG3008Z	T.SCREW	12		
	23	LE40248-001A	U.LINK LEV.ASSY	1		
	24	LE40239-001A	SHAFT	1		
	25	LE30424-001A	CAM COVER	1		
	26	LE30393-001A	LOAD.LINK	1		
	27	LE40257-001A	STUD	1		
	28	E72405-001	SPECIAL SCREW	1	D.GEAR1	
	29	LE40150-001A	LINK LEVER	1		
	30	LE20154-001A	CAM	1		
	31	LE30394-001A	LOAD LEVER	1		
	32	LE40254-001A	LOADING ROLLER	1		
	33	LE40258-002A	STUD	1		
	34	LE40183-001A	TOR.SPRING	1		
	35	QYSBSG3008N	T.SCREW	17		
	36	LE10095-001A	LEVER BASE	1		
	37	LE40153-001A	D.GEAR 3	1		
	38	E65923-003	TAPPING SCREW	6		
	39	LE30396-001A	UNLOAD.LINK	1		
	40	LE40177-001A	PIN	1		
	41	LE40183-005A	TOR.SPRING	1		
	42	QYSBSF3008Z	SCREW	18		
	43	LE20211-001A	UNLOAD LEVER	1		
	44	LE40154-001A	U.L.ROLLER	2		
	45	LE40155-001A	LOCK LEVER	1		
	46	LE30491-001A	LED.HOLDER 1	1		
	47	LE10093-001A	LOADING BASE	1		
	48	LE30448-001A	UPPER LEVER	1		

## ■ Parts list (General assembly)

Block No. 

M	1	M	M
---	---	---	---

△	Item	Parts number	Parts name	Q'ty	Description	Area
	50	LE30449-001A	UPPER LINK	1		
	51	LE40157-001A	LOD	1		
	52	LE40180-004A	TEN.SPRING	1		
	53	LE20153-002A	P.U.BASE	1		
	54	E406294-001	INSULATOR	2		
	55	E406294-002	INSULATOR	2		
	56	LE40179-001A	INS. SPRING	1		
	57	LE40149-001A	INSULATOR BKT.	1		
	58	QYSBSF2006Z	SCREW	2		
	59	LE30001-020A	SPACER	2		
	60	LE20155-001A	CLAMPER BASE	1		
	61	VKL7757-001	YOKE	1		
	62	VYH7313-005	MAGNET	1		
	63	VKS3697-001	CLAMPER	1		
	64	QYSBSF2606Z	SCREW	1		
	65	LE40165-001A	CLAMP.LEVER	1		
	66	LE40180-002A	TEN.SPRING	1		
	67	LE40183-004A	TOR.SPRING	1		
	68	LE40171-001A	ROLLER	8		
	69	QYSBST3010Z	T.SCREW	4		
	70	LE10100-001A	DOOR BASE	1		
	71	LE30001-018A	SPACER	1		
	72	PPN13KA11C	DC MOTOR	1		
	73	LE40160-001A	MOTOR PULLEY	1		
	74	LE40163-001A	MOTOR BKT.	1		
	75	E408199-201SS	C.D PULLEY WORM	1		
	76	LE40178-001A	SHAFT	1		
	77	LE40288-001A	SHAFT GUIDE	2		
	78	E75950-003	C.D BELT	1		
	79	LE40164-001A	WHEEL GEAR	1		
	80	LE30401-001A	SLIDE CAM	1		
	81	LE30402-001A	POP UP LEVER	1		
	82	LE40183-003A	TOR. SPRING	1		
	83	LE30403-001A	POP LINK	1		
	84	LE20156-001A	MAIN GEAR	1		
	85	LE30404-001A	ST LOCK LEVER	1		
	86	LE30405-001A	DOOR LOCK	1		
	88	LE10097-001A	CENTER STORAGE	1		
	89	LE10096-001A	DISC STORAGE	4		
	90	QYSDSFY3008Z	SCREW	32		
	91	LE10098-001A	SAFTY COVER	1		
	92	LE30487-001A	DISC INDICATOR	1		
	93	LE30488-001A	IND.HOLDER	1		
	94	LE20182-001A	LOAD. GUIDE	1		
	95	LE20285-001A	DROP PROOF BKT.	1		
	97	LE30492-002A	LED.HOLDER 2	1		
	100	LE10127-001A	CHASSIS BASE	1		
	101	LE10130-025A	REAR PANEL	1		C

## ■ Parts list (General assembly)

Block No. M 1 M M

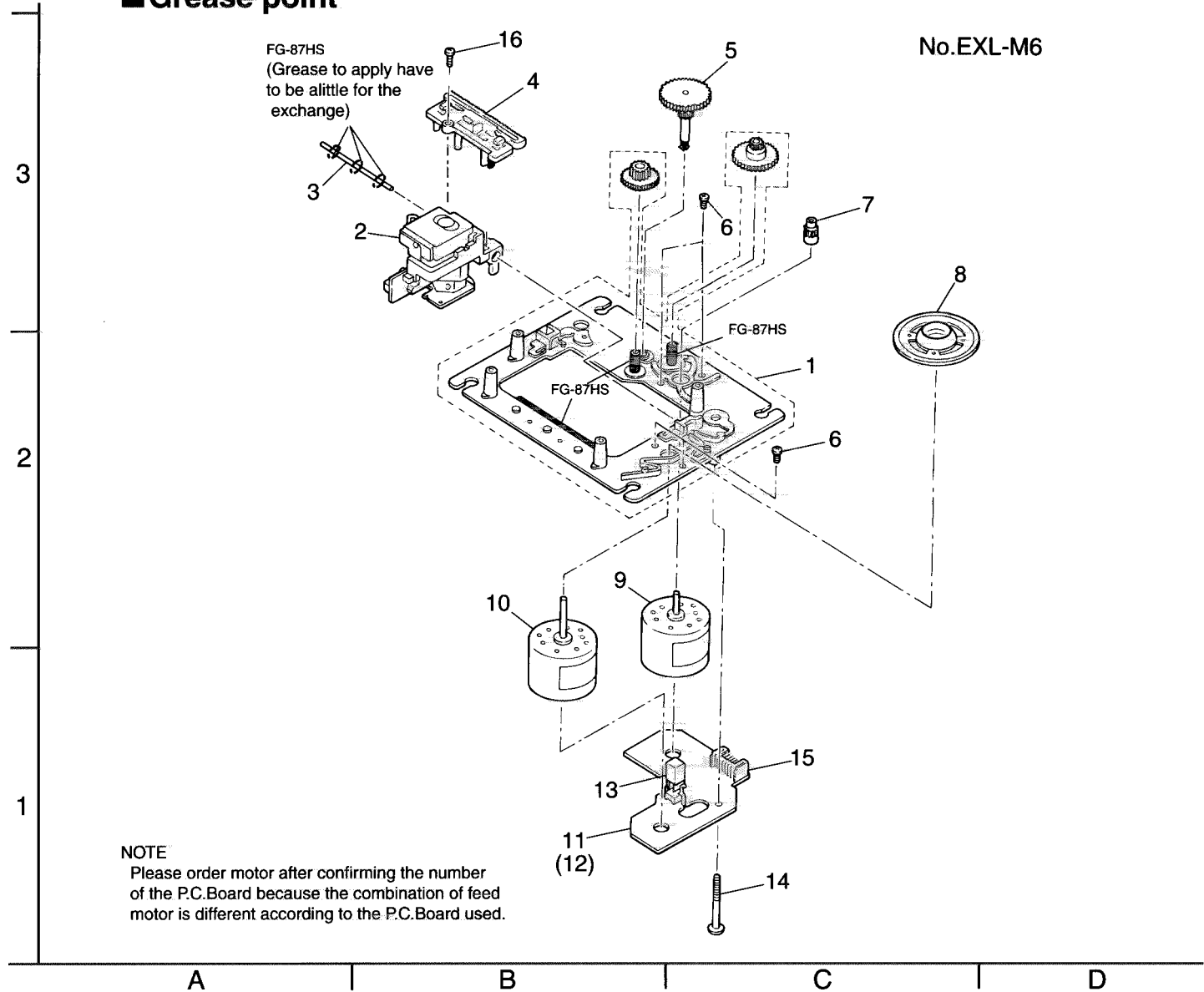
△	Item	Parts number	Parts name	Q'ty	Description	Area
△	101	LE10130-024A	REAR PANEL	1		J
	102	LE30001-021A	SPACER	2		
	103	E68587-006	BRACKET	5		
	105	LE30521-001A	REAR COVER	1		
	106	LE10132-001A	TRANS BKT	1		
	107	E310243-002	PLASTIC RIVET	2		
	108	LE30520-001A	SPEED CLAMP	1		
	109	QYSBST3004E	T.SCREW	2	T.BKT-CHASSIS	
	110	LE30399-001A	LABEL	1	1-50	
	111	LE30399-002A	LABEL	1	51-100	
	112	LE30399-003A	LABEL	1	101-150	
	113	LE30399-004A	LABEL	1	151-200	
	114	LE30519-001A	SIDE BKT	2		
	115	LE20183-001A	DISC GUARD L	1		
	116	LE20184-001A	DISC GUARD R	1		
	117	ETP1000-77JAJ	POWER TRANS	1		
	118	E47227-042	FOOT ASS'Y	1	CENTER	
	119	E47227-041	FOOT ASS'Y	2	REAR	
		E307427-005	FOOT ASS'Y	2	FRONT	
	120	LE30485-001A	KNOB	1	JOG	
	121	LE10128-001A/S/	METAL COVER	1		
	122	E406308-003	SPECIAL SCREW	4	METAL(SIDE)	
	124	LE30483-001A	W.SCREEN	1		
	128	VJD5429-001SS	JVC MARK	1		
	131	LE40156-001A	SUPPRT BRACKET	4		
	133	LE10125-002A	DOOR	1		
	140	QYSBST3006Z	T.SCREW	5	REAR-CB	
	145	QYSBSGY3008M	SPECIAL SCREW	19		
	146	LE30658-002A	LABEL	1		
	147	QUQ412-2162CJ	CARD WIRE	1		
	148	QYSBSG3008M	T.SCREW	2	F.P.-CHASSIS	
	149	QYSDSF3010M	SCREW	1		
	150	LE40253-001A	LINK ROLLER	1		
	151	QYSBSF3008Z	SCREW	1		
	152	LV30064-031A	SPACER	1		
	153	QUQ110-1507BJ	CARD WIRE	1	CD MECHA	
	154	QUQ412-1911CJ	FFC WIRE	1		
	155	QJJ010-062001	SIN CR C-C WIRE	1	CD MECHA	
	156	E310243-002	PLASTIC RIVET	1		
	157	QYSDSTL4008E	SPECIAL SCREW	2	P.TRANS	
	158	QYSDSF2606M	SCREW	4	WIRE COVER	
	159	LE40315-001A	GUARD BKT.	1		
	160	QYSBSE3008Z	SCREW	1		
	161	-----	CD MECHA	1		

CD mechanism assembly and parts list


Block No. **M** **2** **M** **M**

■ Grease point

No. EXL-M6



■ Parts list (CD mechanism)

	Item	Parts Number	Parts Name	Q'ty	Description	Area
	1	EPB-002PK	MECHA. BASE ASSY	1		
	2	OPTIMA-150S	OPTICAL PICK UP	1		
	3	E407782-001	CD SHAFT	1		
	4	E307746-001	CD RACK	1		
	5	EPB-003A	MECHA GEAR	1		
	6	SDSP2003N	SCREW	4		
	7	E406750-001	PINION GEAR	1		
	8	E75807-302	TURN TABLE	1	Use the Single CD mecha	
		EPB309173A	TURN TABLE	1	Use the Changer CD mecha	
	9	E406784-001	FEED MOTOR	1	Use the No.11 P.C.Board	
		MDN-4RA3ETA-1	FEED MOTOR	1	Use the No.12 P.C.Board	
	10	E406783-001	SPINDLE MOTOR	1		
	11	EMW10190-001(S)	P.C.BOARD	1		
	12	EMW10190-221(S)	P.C.BOARD	1		
	13	ESB1100-005	LEAF SWITCH	1		
	14	E75832-001	SCREW	1		
	15	EMV5109-006B	CONN. TERMINAL	1		
	16	SDSF2006Z	SCREW	1		

# Electrical parts list

## ■Electrical parts list (Front board) Block No. 0 1

△	Item	Parts number	Parts name	Remarks	Area
	C 701	QER61HM-475Z	E CAPACITOR	4.7MF 20% 50V	
	C 702	QER61HM-475Z	E CAPACITOR	4.7MF 20% 50V	
	C 703	QDVB1EZ-223Y	C CAPACITOR		
	C 704	QER61EM-106Z	E CAPACITOR	10MF 20% 25V	
	C 705	QDVB1EZ-223Y	C CAPACITOR		
	C 706	QDVB1EZ-223Y	C CAPACITOR		
	C 707	QDVB1EZ-223Y	C CAPACITOR		
	C 708	QER61EM-106Z	E CAPACITOR	10MF 20% 25V	
	C 709	QCB1HK-101Y	C CAPACITOR	100PF 10% 50V	
	C 716	QER61EM-106Z	E CAPACITOR	10MF 20% 25V	
	C 717	QDVB1EZ-223Y	C CAPACITOR		
	C 911	QDVB1EZ-223Y	C CAPACITOR		
	CN701	QGF1210G1-21	CONNECTOR		
	CN702	QJK021-113001	C-B WIRE ASSY		
	CN704	QJK021-043004	SIN CR C-B WIRE		
	CN712	QGA2001C1-11	11P PLUG ASSY		
	D 701	SLR-342VC-T	LED		
	DI701	QLF0065-001	FL TUBE		
	FS701	E306805-014	FELT SPACER		
	FW713	QUM104-08Z4Z4	PARA RIBON WIRE		
	FW901	QUM103-08DGZ4	PARA RIBON WIRE		
	FW902	QUM103-08Z4Z4	PARA RIBON WIRE		
	FW903	QUM107-46DGZ4	PARA RIBON WIRE		
	FW904	QUM103-08Z4Z4	PARA RIBON WIRE		
	FW905	QUM108-25DGZ4	PARA RIBON WIRE		
	IC701	MSC7112-01GS-2K	IC		
	IC702	GP1U281X	IC		
	JS711	QSW0240-001	PUSH SWITCH		
	PH911	GP1A58HR	PHOTO INT.		
	PH912	GP1A58HR	PHOTO INT.		
	PH913	GP1A58HR	PHOTO INT.		
	PH921	PT361FM	PHOTO.TR.		
	Q 921	2SC1740S/RS-T	TRANSISTOR		
	R 701	QRE141J-221Y	C RESISTOR	220 5% 1/4W	
	R 702	QRE141J-473Y	C RESISTOR	47K 5% 1/4W	
	R 911	QRE141J-431Y	C RESISTOR	430 5% 1/4W	
	R 912	QRE141J-431Y	C RESISTOR	430 5% 1/4W	
	R 913	QRE141J-431Y	C RESISTOR	430 5% 1/4W	
	R 914	QRE141J-472Y	C RESISTOR	4.7K 5% 1/4W	
	R 915	QRE141J-472Y	C RESISTOR	4.7K 5% 1/4W	
	R 916	QRE141J-472Y	C RESISTOR	4.7K 5% 1/4W	
	R 921	QRE141J-103Y	C RESISTOR	10K 5% 1/4W	
	R 922	QRE141J-202Y	C RESISTOR	2.0K 5% 1/4W	
	S 701	QSW0480-001Z	TACT SWITCH		
	S 711	QSW0480-001Z	TACT SWITCH		
	S 712	QSW0480-001Z	TACT SWITCH		
	S 713	QSW0480-001Z	TACT SWITCH		
	S 714	QSW0480-001Z	TACT SWITCH		
	S 715	QSW0480-001Z	TACT SWITCH		
	S 716	QSW0480-001Z	TACT SWITCH		
	S 717	QSW0480-001Z	TACT SWITCH		
	S 718	QSW0480-001Z	TACT SWITCH		
	S 719	QSW0480-001Z	TACT SWITCH		
	S 720	QSW0480-001Z	TACT SWITCH		
	S 721	QSW0480-001Z	TACT SWITCH		
	S 722	QSW0480-001Z	TACT SWITCH		
	S 723	QSW0480-001Z	TACT SWITCH		
	S 731	QSW0480-001Z	TACT SWITCH		
	S 732	QSW0480-001Z	TACT SWITCH		
	S 733	QSW0480-001Z	TACT SWITCH		
	S 901	QSW0472-001	SWITCH		
	S 902	QSW0472-001	SWITCH		
	S 903	QSW0507-001	SWITCH		
	S 904	QSW0507-001	SWITCH		
	SP701	VYH7653-004	IC HOLDER		

## ■ Electrical parts list (Main board)

Block No. 0 2

Item	Parts number	Parts name	Remarks	Area	Item	Parts number	Parts name	Remarks	Area
△ C 101	QETB1CM-338	E CAPACITOR	3300MF 20% 16V		△ C 651	QDCB1HJ-120Y	C CAPACITOR		
△ C 102	QETB1CM-228	E CAPACITOR	2200MF 20% 16V		C 652	QDCB1HJ-120Y	C CAPACITOR		
C 108	QCF31HZ-223Z	C CAPACITOR	.022MF +80:-20%		C 653	QDVB1EZ-223Y	C CAPACITOR		
C 111	QETN1HM-225Z	E CAPACITOR	2.2MF 20% 50V		C 655	QFVJ1HJ-104Z	TF CAPACITOR	.10MF 5% 50V	
C 112	QETN1EM-476Z	E CAPACITOR	47MF 20% 25V		C 656	QFVJ1HJ-104Z	TF CAPACITOR	.10MF 5% 50V	
C 113	QETN1EM-476Z	E CAPACITOR	47MF 20% 25V		C 661	QCBB1HK-471Y	C CAPACITOR	470PF 10% 50V	
C 121	QETN1CM-227Z	E CAPACITOR	220MF 20% 16V		C 663	QFLC1HJ-223Z	M CAPACITOR	.022MF 5% 50V	
C 122	QETN1CM-476Z	E CAPACITOR	47MF 20% 16V		C 664	QDVB1EZ-223Y	C CAPACITOR		
C 131	QETN1EM-476Z	E CAPACITOR	47MF 20% 25V		C 665	QFVJ1HJ-104Z	TF CAPACITOR	.10MF 5% 50V	
C 132	QETN1HM-476Z	E CAPACITOR	47MF 20% 50V		C 673	QETN0JM-108Z	E CAPACITOR	1000MF 20% 6.3V	
C 133	QETN1HM-106Z	E CAPACITOR	10MF 20% 50V		C 674	QDVB1EZ-223Y	C CAPACITOR		
C 134	QCF11HZ-473	C CAPACITOR	.047MF +80:-20%		C 679	QETN1CM-107Z	E CAPACITOR	100MF 20% 16V	
C 191	QFVJ1HJ-104Z	TF CAPACITOR	.10MF 5% 50V		C 680	QCZ0205-155Z	ML C CAPACITOR	1.5MF	
C 192	QFVJ1HJ-104Z	TF CAPACITOR	.10MF 5% 50V		C 681	QETN1HM-106Z	E CAPACITOR	10MF 20% 50V	
C 196	QCF11HZ-473	C CAPACITOR	.047MF +80:-20%		C 682	QETN1HM-106Z	E CAPACITOR	10MF 20% 50V	
C 199	QCF31HZ-223Z	C CAPACITOR	.022MF +80:-20%		C 683	QDXB1CM-122Y	C CAPACITOR		
C 201	QETN1HM-106Z	E CAPACITOR	.10MF 20% 50V		C 684	QDXB1CM-122Y	C CAPACITOR		
C 202	QDVB1EZ-223Y	C CAPACITOR			C 801	QCS11HJ-680	C CAPACITOR	68PF 5% 50V	
C 203	QCBB1HK-331Y	C CAPACITOR	330PF 10% 50V		C 804	QDVB1EZ-223Y	C CAPACITOR		
C 204	QCF11HZ-473	C CAPACITOR	.047MF +80:-20%		C 805	QETN1HM-106Z	E CAPACITOR	10MF 20% 50V	
C 205	QETN1HM-106Z	E CAPACITOR	10MF 20% 50V		C 806	QDVB1EZ-223Y	C CAPACITOR		
C 206	QDVB1EZ-223Y	C CAPACITOR			C 807	QETN1HM-106Z	E CAPACITOR	10MF 20% 50V	
C 207	QCF11HZ-473	C CAPACITOR	.047MF +80:-20%		C 811	QCS11HJ-680	C CAPACITOR	68PF 5% 50V	
C 208	QETN1HM-106Z	E CAPACITOR	10MF 20% 50V		C 814	QDVB1EZ-223Y	C CAPACITOR		
C 301	QCBB1HK-101Y	C CAPACITOR	100PF 10% 50V		C 815	QER61EM-106Z	E CAPACITOR	10MF 20% 25V	
C 302	QCBB1HK-101Y	C CAPACITOR	100PF 10% 50V		C 816	QDVB1EZ-223Y	C CAPACITOR		
C 303	QCBB1HK-101Y	C CAPACITOR	100PF 10% 50V		C 817	QER61EM-106Z	E CAPACITOR	10MF 20% 25V	
C 304	QCBB1HK-101Y	C CAPACITOR	100PF 10% 50V		C 821	QCS11HJ-680	C CAPACITOR	68PF 5% 50V	
C 305	QER41CM-476	E CAPACITOR	47MF 20% 16V		CN001	WJK0047-001A	E-SI C WIRE C-B		
C 306	QER41CM-476	E CAPACITOR	47MF 20% 16V		CN101	QGA2501C1-06	6P CONNECTOR		
C 307	QFVJ1HJ-104Z	TF CAPACITOR	.10MF 5% 50V		CN601	QGF1024F1-15S	15PIN CONNECTOR		
C 308	QER61EM-106Z	E CAPACITOR	10MF 20% 25V		CN602	QGA2001C1-06	6P PLUG ASSY		
C 331	QDXB1CM-222Y	C CAPACITOR			CN604	QGF1205C1-19	CONNECTOR		
C 332	QDXB1CM-222Y	C CAPACITOR			CN611	QGF1205C1-21	CONNECTOR		
C 341	QDYB1CM-103Y	C CAPACITOR			CN711	QGF1205C1-19	CONNECTOR		
C 342	QETN1HM-106Z	E CAPACITOR	10MF 20% 50V		CN714	QGA2001C1-04	4P PLUG ASSY		
C 373	QDYB1CM-103Y	C CAPACITOR			CN901	QGD2501C1-03Z	SOCKET I.M		
C 401	QDVB1EZ-223Y	C CAPACITOR			CN903	QGD2501C1-03Z	SOCKET I.M		
C 402	QETN1HM-106Z	E CAPACITOR	10MF 20% 50V		CN904	QGD2501C1-04Z	SOCKET I.M		
C 602	QCZ0205-155Z	ML C CAPACITOR	1.5MF		CN905	QGD2501C1-04Z	SOCKET I.M		
C 603	QFVJ1HJ-104Z	TF CAPACITOR	.10MF 5% 50V		CN906	QGD2501C1-04Z	SOCKET I.M		
C 605	QETN1HM-106Z	E CAPACITOR	.10MF 20% 50V		CP101	ICP-N10-T	C PROTECTOR		C
C 606	QDGB1HK-102Y	C CAPACITOR			△ D 101	1SR35-400A-T5	DIODE		
C 607	QDGB1HK-102Y	C CAPACITOR			△ D 102	1SR35-400A-T5	DIODE		
C 608	QETN1HM-105Z	E CAPACITOR	1.0MF 20% 50V		△ D 103	1SR35-400A-T5	DIODE		
C 609	QCBB1HK-101Y	C CAPACITOR	100PF 10% 50V		△ D 104	1SR35-400A-T5	DIODE		
C 610	QFLC1HJ-273Z	M CAPACITOR	.027MF 5% 50V		D 111	MTZJ5.6A-T2	ZENER DIODE		
C 611	QDXB1CM-472Y	C CAPACITOR			D 121	1SS133-T2	SI DIODE		
C 612	QDYB1CM-103Y	C CAPACITOR			D 131	1SR35-400A-T5	DIODE		
C 613	QCBB1HK-331Y	C CAPACITOR	330PF 10% 50V		D 132	1SR35-400A-T5	DIODE		
C 614	QFVJ1HJ-104Z	TF CAPACITOR	.10MF 5% 50V		D 133	1SR35-400A-T5	DIODE		
C 615	QDVB1EZ-223Y	C CAPACITOR			D 134	MTZJ30C-T2	ZENER DIODE		
C 616	QDVB1EZ-223Y	C CAPACITOR			D 201	1SS133-T2	SI DIODE		
C 617	QDVB1EZ-223Y	C CAPACITOR			D 202	1SS133-T2	SI DIODE		
C 618	QDVB1EZ-223Y	C CAPACITOR			D 203	1SS133-T2	SI DIODE		
C 619	QCBB1HK-271Y	C CAPACITOR	270PF 10% 50V		D 601	GL4800BC	U-RED LED		
C 620	QCS11HJ-470	C CAPACITOR	47PF 5% 50V		D 741	SLA-362LT-T	LED		
C 621	QDGB1HK-102Y	C CAPACITOR			D 742	SLA-362LT-T	LED		
C 622	QDVB1EZ-223Y	C CAPACITOR			D 743	SLA-362LT-T	LED		
C 623	QFVJ1HJ-104Z	TF CAPACITOR	.10MF 5% 50V		EP901	QNZ0136-001Z	EARTH PLATE		
C 625	QCZ0205-155Z	ML C CAPACITOR	1.5MF		EP904	QNZ0136-001Z	EARTH PLATE		
C 631	QETN1CM-477Z	E CAPACITOR	470MF 20% 16V		FW301	QUM109-10Z4Z4	PARA RIBON WIRE		
C 632	QETN1AM-477Z	E CAPACITOR	470MF 20% 10V		HS111	E70306-001	HEAT SINK		
C 633	QCBB1HK-101Y	C CAPACITOR	100PF 10% 50V		IC201	HD6433726SE17F	IC(MCU)		
C 635	QCBB1HK-101Y	C CAPACITOR	100PF 10% 50V		IC202	IC-PST9140-T	IC		
C 641	QDYB1CM-103Y	C CAPACITOR			IC301	NJM4580D	IC		
C 642	QFLC1HJ-103Z	M CAPACITOR	.010MF 5% 50V		IC401	AT24C04-10PC	IC(EP-ROM)		

**Electrical parts list (Main board) Block No. 0 2**

Item	Parts number	Parts name	Remarks	Area	Item	Parts number	Parts name	Remarks	Area
IC601	AN8806SB-W	IC			R 243	QRE141J-472Y	C RESISTOR	4.7K 5% 1/4W	
IC602	BA6897FP-W	IC			R 245	QRE141J-103Y	C RESISTOR	10K 5% 1/4W	
IC603	MN35510	IC			R 246	QRE141J-103Y	C RESISTOR	10K 5% 1/4W	
IC801	NJM4580L	IC			R 251	QRE141J-103Y	C RESISTOR	10K 5% 1/4W	
IC802	NJM4580L	IC			R 301	QRE141J-223Y	C RESISTOR	22K 5% 1/4W	
J 001	QNC0046-001	AC INLET			R 302	QRE141J-223Y	C RESISTOR	22K 5% 1/4W	
J 102	QNS0016-001	3.5 JACK			R 303	QRE141J-223Y	C RESISTOR	22K 5% 1/4W	
J 201	GP1F32T	OPTICAL JACK			R 304	QRE141J-223Y	C RESISTOR	22K 5% 1/4W	
J 301	QNN0035-001	PIN JACK			R 305	QRE141J-202Y	C RESISTOR	2.0K 5% 1/4W	
L 301	QQL231K-4R7Y	INDUCTOR			R 306	QRE141J-202Y	C RESISTOR	2.0K 5% 1/4W	
Q 111	2SB1655/E/	TRANSISTOR			R 307	QRE141J-202Y	C RESISTOR	2.0K 5% 1/4W	
Q 112	2SD1302/ST/-T	TRANSISTOR			R 308	QRE141J-202Y	C RESISTOR	2.0K 5% 1/4W	
Q 113	2SB1357/EF/-T	TRANSISTOR			R 309	QRE141J-273Y	C RESISTOR	27K 5% 1/4W	
Q 121	2SA933S/RS/-T	TRANSISTOR			R 310	QRE141J-273Y	C RESISTOR	27K 5% 1/4W	
Q 122	DTA114YSA-T	D.TRANSISTOR			R 311	QRE141J-101Y	C RESISTOR	100 5% 1/4W	
Q 131	2SA933S/RS/-T	TRANSISTOR			R 312	QRE141J-101Y	C RESISTOR	100 5% 1/4W	
Q 132	2SD1302/ST/-T	TRANSISTOR			R 331	QRE141J-561Y	C RESISTOR	560 5% 1/4W	
Q 133	2SD1302/ST/-T	TRANSISTOR			R 332	QRE141J-561Y	C RESISTOR	560 5% 1/4W	
Q 134	DTA114YSA-T	D.TRANSISTOR			R 333	QRE141J-101Y	C RESISTOR	100 5% 1/4W	
Q 201	DTC144ESA-T	D.TRANSISTOR			R 334	QRE141J-101Y	C RESISTOR	100 5% 1/4W	
Q 202	DTA114YSA-T	D.TRANSISTOR			R 335	QRE141J-103Y	C RESISTOR	10K 5% 1/4W	
Q 331	2SD1302/ST/-T	TRANSISTOR			R 336	QRE141J-103Y	C RESISTOR	10K 5% 1/4W	
Q 332	2SD1302/ST/-T	TRANSISTOR			R 341	QRE141J-471Y	C RESISTOR	470 5% 1/4W	
Q 601	2SA952/LK/-T	TRANSISTOR			R 342	QRE141J-101Y	C RESISTOR	100 5% 1/4W	
Q 801	2SC2060/QR/-T	TRANSISTOR			R 373	QRE141J-474Y	C RESISTOR	470K 5% 1/4W	
Q 802	2SA934/QR/-T	TRANSISTOR			R 374	QRE141J-274Y	C RESISTOR	270K 5% 1/4W	
Q 811	2SC2060/QR/-T	TRANSISTOR			R 601	QRE141J-123Y	C RESISTOR	12K 5% 1/4W	
Q 812	2SA934/QR/-T	TRANSISTOR			R 603	QRE141J-125Y	C RESISTOR	1.2M 5% 1/4W	
Q 821	2SC2060/QR/-T	TRANSISTOR			R 605	QRE141J-274Y	C RESISTOR	270K 5% 1/4W	
Q 822	2SA934/QR/-T	TRANSISTOR			R 606	QRE141J-154Y	C RESISTOR	150K 5% 1/4W	
R 111	QRE141J-222Y	C RESISTOR	2.2K 5% 1/4W		R 607	QRE141J-273Y	C RESISTOR	27K 5% 1/4W	
R 112	QRE141J-221Y	C RESISTOR	220 5% 1/4W		R 609	QRE141J-114Y	C RESISTOR	110K 5% 1/4W	
R 113	QRE141J-221Y	C RESISTOR	220 5% 1/4W		R 610	QRE141J-104Y	C RESISTOR	100K 5% 1/4W	
R 114	QRE141J-202Y	C RESISTOR	2.0K 5% 1/4W		R 611	QRE141J-473Y	C RESISTOR	47K 5% 1/4W	
R 115	QRE141J-103Y	C RESISTOR	10K 5% 1/4W		R 612	QRE141J-822Y	C RESISTOR	8.2K 5% 1/4W	
R 116	QRE141J-122Y	C RESISTOR	1.2K 5% 1/4W		R 613	QRE141J-121Y	C RESISTOR	120 5% 1/4W	
R 117	QRE141J-1R0Y	C RESISTOR	1.0 5% 1/4W		R 614	QRE141J-100Y	C RESISTOR	10 5% 1/4W	
R 119	QRE141J-202Y	C RESISTOR	2.0K 5% 1/4W		R 615	QRE141J-120Y	C RESISTOR	12 5% 1/4W	
R 121	QRE141J-331Y	C RESISTOR	330 5% 1/4W		R 616	QRE141J-910Y	C RESISTOR	91 5% 1/4W	
R 122	QRE141J-123Y	C RESISTOR	12K 5% 1/4W		R 630	QRE141J-155Y	C RESISTOR	1.5M 5% 1/4W	
R 123	QRE141J-273Y	C RESISTOR	27K 5% 1/4W		R 641	QRE141J-683Y	C RESISTOR	68K 5% 1/4W	
R 124	QRE141J-221Y	C RESISTOR	220 5% 1/4W		R 642	QRE141J-222Y	C RESISTOR	2.2K 5% 1/4W	
R 131	QRZ9005-560X	FUSI.RESISTOR	56 1/0W	C	R 643	QRE141J-822Y	C RESISTOR	8.2K 5% 1/4W	
R 132	QRE141J-362Y	C RESISTOR	3.6K 5% 1/4W		R 644	QRE141J-223Y	C RESISTOR	22K 5% 1/4W	
R 133	QRE141J-362Y	C RESISTOR	3.6K 5% 1/4W		R 645	QRE141J-223Y	C RESISTOR	22K 5% 1/4W	
R 134	QRE141J-121Y	C RESISTOR	120 5% 1/4W		R 646	QRE141J-222Y	C RESISTOR	2.2K 5% 1/4W	
R 135	QRE141J-911Y	C RESISTOR	910 5% 1/4W		R 647	QRE141J-472Y	C RESISTOR	4.7K 5% 1/4W	
R 136	QRE141J-911Y	C RESISTOR	910 5% 1/4W		R 650	QRE141J-182Y	C RESISTOR	1.8K 5% 1/4W	
R 137	QRE141J-103Y	C RESISTOR	10K 5% 1/4W		R 651	QRE141J-102Y	C RESISTOR	1.0K 5% 1/4W	
R 138	QRE141J-103Y	C RESISTOR	10K 5% 1/4W		R 652	QRE141J-102Y	C RESISTOR	1.0K 5% 1/4W	
R 139	QRE141J-103Y	C RESISTOR	10K 5% 1/4W		R 653	QRE141J-102Y	C RESISTOR	1.0K 5% 1/4W	
R 151	QRE141J-153Y	C RESISTOR	15K 5% 1/4W		R 660	QRE141J-102Y	C RESISTOR	1.0K 5% 1/4W	
R 201	QRE141J-102Y	C RESISTOR	1.0K 5% 1/4W		R 661	QRE141J-683Y	C RESISTOR	68K 5% 1/4W	
R 202	QRE141J-472Y	C RESISTOR	4.7K 5% 1/4W		R 663	QRE141J-124Y	C RESISTOR	120K 5% 1/4W	
R 203	QRE141J-472Y	C RESISTOR	4.7K 5% 1/4W		R 664	QRE141J-471Y	C RESISTOR	470 5% 1/4W	
R 204	QRE141J-472Y	C RESISTOR	4.7K 5% 1/4W		R 665	QRE141J-271Y	C RESISTOR	270 5% 1/4W	
R 231	QRE141J-472Y	C RESISTOR	4.7K 5% 1/4W		R 666	QRE141J-750Y	C RESISTOR	75 5% 1/4W	
R 232	QRE141J-472Y	C RESISTOR	4.7K 5% 1/4W		R 667	QRE141J-220Y	C RESISTOR	22 5% 1/4W	
R 233	QRE141J-472Y	C RESISTOR	4.7K 5% 1/4W		R 681	QRE141J-102Y	C RESISTOR	1.0K 5% 1/4W	
R 234	QRE141J-472Y	C RESISTOR	4.7K 5% 1/4W		R 682	QRE141J-102Y	C RESISTOR	1.0K 5% 1/4W	
R 235	QRE141J-472Y	C RESISTOR	4.7K 5% 1/4W		R 683	QRE141J-223Y	C RESISTOR	22K 5% 1/4W	
R 236	QRE141J-472Y	C RESISTOR	4.7K 5% 1/4W		R 684	QRE141J-223Y	C RESISTOR	22K 5% 1/4W	
R 237	QRE141J-472Y	C RESISTOR	4.7K 5% 1/4W		R 687	QRE141J-102Y	C RESISTOR	1.0K 5% 1/4W	
R 238	QRE141J-472Y	C RESISTOR	4.7K 5% 1/4W		R 688	QRE141J-182Y	C RESISTOR	1.8K 5% 1/4W	
R 239	QRE141J-472Y	C RESISTOR	4.7K 5% 1/4W		R 691	QRE141J-121Y	C RESISTOR	120 5% 1/4W	
R 240	QRE141J-472Y	C RESISTOR	4.7K 5% 1/4W		R 741	QRE141J-331Y	C RESISTOR	330 5% 1/4W	
R 241	QRE141J-472Y	C RESISTOR	4.7K 5% 1/4W		R 742	QRE141J-331Y	C RESISTOR	330 5% 1/4W	

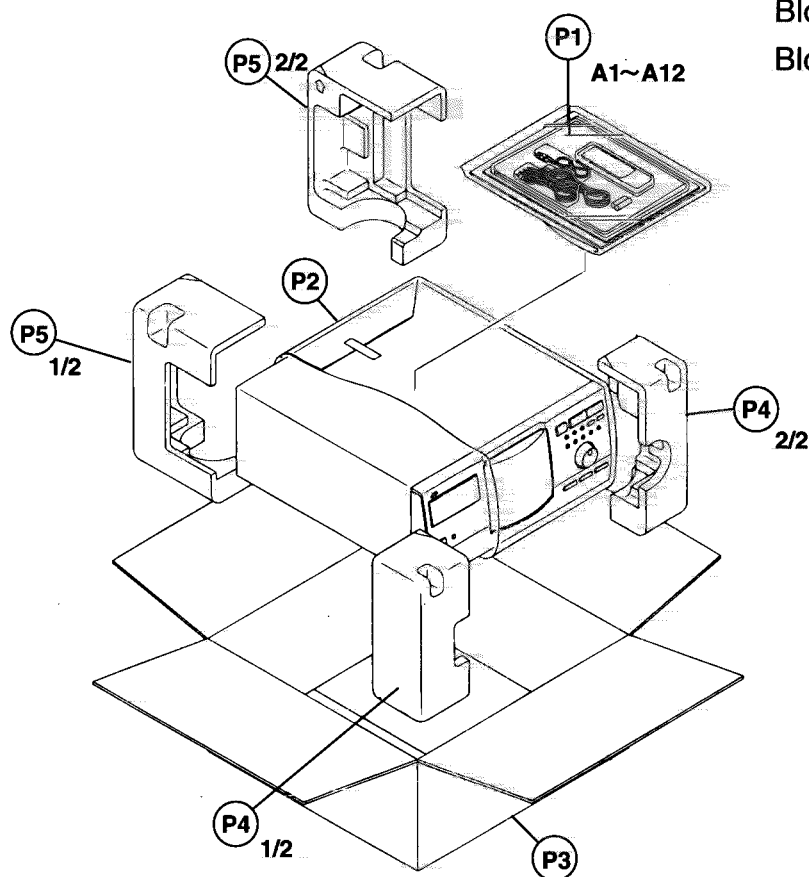
■Electrical parts list (Main board)

Block No.02

▲	Item	Parts number	Parts name	Remarks	Area
	R 743	QRE141J-331Y	C RESISTOR	330 5% 1/4W	
	R 801	QRE141J-223Y	C RESISTOR	22K 5% 1/4W	
	R 802	QRE141J-223Y	C RESISTOR	22K 5% 1/4W	
	R 803	QRE141J-153Y	C RESISTOR	15K 5% 1/4W	
	R 804	QRE141J-153Y	C RESISTOR	15K 5% 1/4W	
	R 805	QRE141J-101Y	C RESISTOR	100 5% 1/4W	
	R 811	QRE141J-203Y	C RESISTOR	20K 5% 1/4W	
	R 812	QRE141J-203Y	C RESISTOR	20K 5% 1/4W	
	R 813	QRE141J-183Y	C RESISTOR	18K 5% 1/4W	
	R 814	QRE141J-183Y	C RESISTOR	18K 5% 1/4W	
	R 815	QRE141J-101Y	C RESISTOR	100 5% 1/4W	
	R 821	QRE141J-203Y	C RESISTOR	20K 5% 1/4W	
	R 822	QRE141J-203Y	C RESISTOR	20K 5% 1/4W	
	R 823	QRE141J-243Y	C RESISTOR	24K 5% 1/4W	
	R 824	QRE141J-243Y	C RESISTOR	24K 5% 1/4W	
	R 825	QRE141J-101Y	C RESISTOR	100 5% 1/4W	
	TH101	QAD0064-2R2Z	P THERMISTOR		C
	TH102	QAD0064-2R2Z	P THERMISTOR		C
	X 201	QAX0246-001Z	RESONATOR		
	X 651	QAX0007-001Z	RESONATOR		



## Packing materials and accessories parts list

Block No. M 3 M MBlock No. M 4 M M

### ■ Packing parts list

Block No. M 3 M M

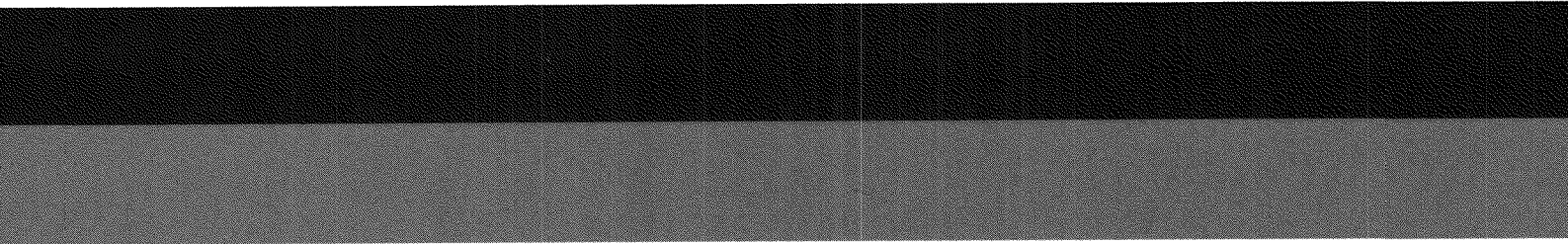
⚠	Item	Parts number	Parts name	Q'ty	Description	Area
	P 1	E309758-006	POLY BAG	1	ACCESSORY	
	P 2	QPC08008015P	POLY BAG	1	SET	
	P 3	LV20536-001A	PACKING CASE	1		
	P 4	LE20274-001A	PACKING PAD	1	FRONT	
	P 5	LE20275-002A	PACKING PAD	1	REAR	

### ■ Accessories parts list

Block No. M 4 M M

⚠	Item	Parts number	Parts name	Q'ty	Description	Area
	A 1	LVT0359-002A	INST.BOOK	1	ENG,FRE	C
		LVT0359-001A	INST.BOOK	1	ENG	J
	A 2	NS4571-101	C.D BOOKLET	1		
⚠	A 3	QMPE090-183-JD	POWER CORD	1		
	A 4	EWP302-011W	SIGNAL CORD(JES	1	FOR AUDIO OUT	
	A 5	EWP805-001W	REMOTE WIRE	1	FOR COMPU LINK	
	A 6	RM-SXL2000J	REMOCON	1		
	A 7	-----	BATTERY	1		
	A 8	BT-51020-2	REGIST CARD	1		J
	A 9	BT-20044G	WARRANTY CARD	1		J
	A 10	BT-52004-1	WARRANTY CARD	1		C
	A 11	BT-20071B	SERVICE NETWORK	1		C
	A 12	E308801-001	SHEET	1		

**XL-MC2000BK**



VICTOR COMPANY OF JAPAN, LIMITED  
AUDIO DIVISION, 10-1, 1Chome, Ohwatari-machi, Maebashi-city, 371-8543, Japan