

# JVC

# SCHEMATIC DIAGRAMS

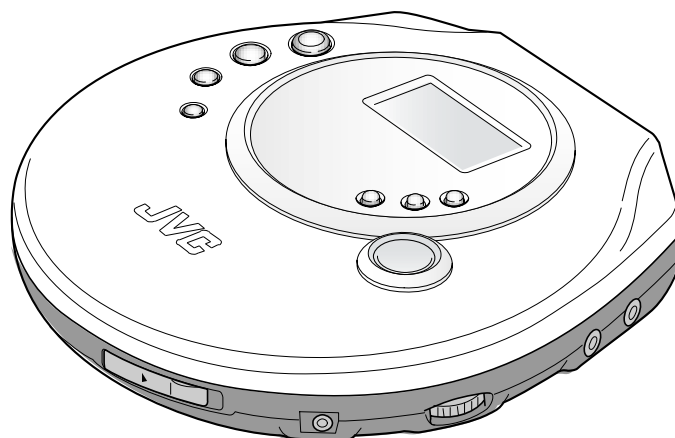
PORTABLE CD PLAYER

## XL-PM20SL

CD-ROM No.SML200208

Area suffix

C ----- Canada  
 B ----- U.K.  
 E ----- Continental Europe



COMPACT  
**disc**  
 DIGITAL AUDIO

**MP3**  
 PLAYBACK

### Contents

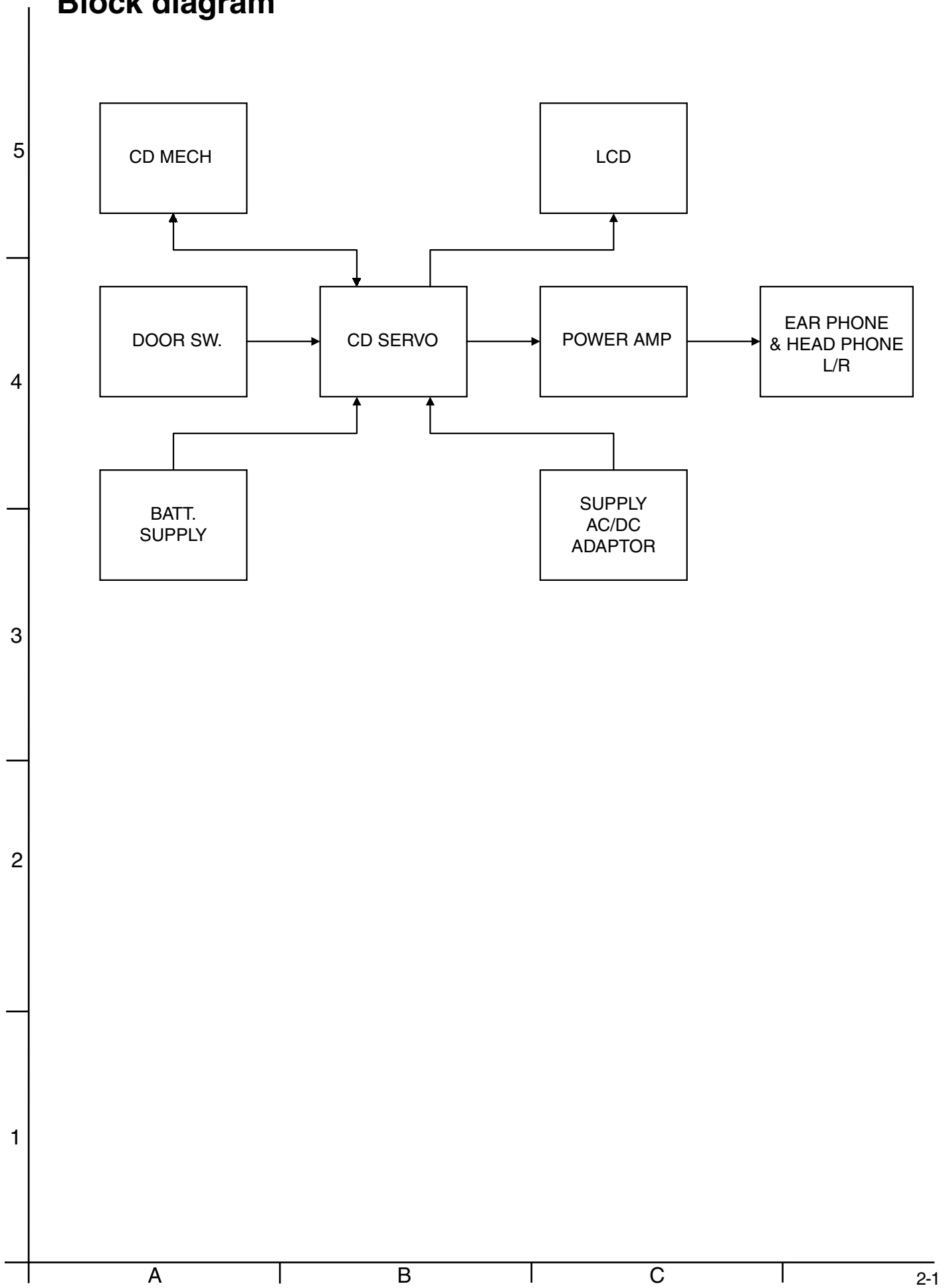
Block diagram .....	2-1
Standard schematic diagram .....	2-3
Printed circuit boards .....	2-4

## XL-PM20SL

In regard with component parts appearing on the silk-screen printed side (parts side) of the PWB diagrams, the parts that are printed over with black such as the resistor (■), diode (⬤) and ICP (●) or identified by the "⚠" mark nearby are critical for safety.

(This regulation does not correspond to J and C version.)

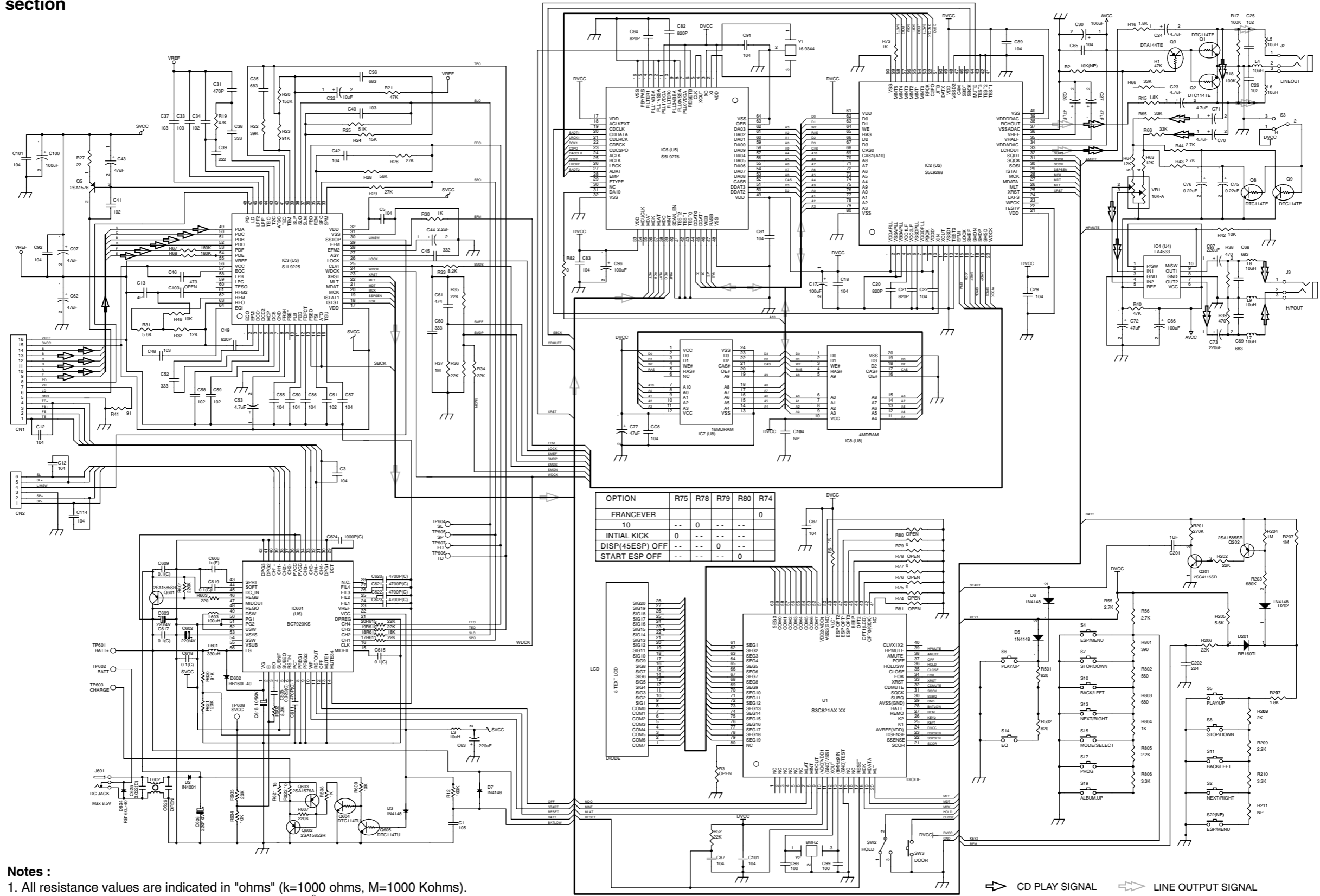
# Block diagram



< MEMO >

# Standard schematic diagram

## Main section



OPTION	R75	R78	R79	R80	R74
FRANCEVER	--	0	--	--	0
INITIAL KICK	0	--	--	--	--
DISP(45ESP) OFF	--	--	0	--	--
START ESP OFF	--	--	--	0	--

**Notes :**

1. All resistance values are indicated in "ohms" (k=1000 ohms, M=1000 Kohms).
2. All capacitance values are indicated in "  $\mu$ F" ( $p=10^{-6} \mu$ F).



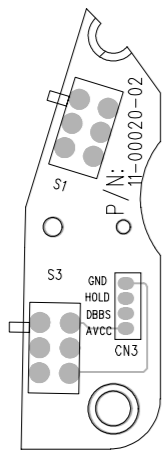
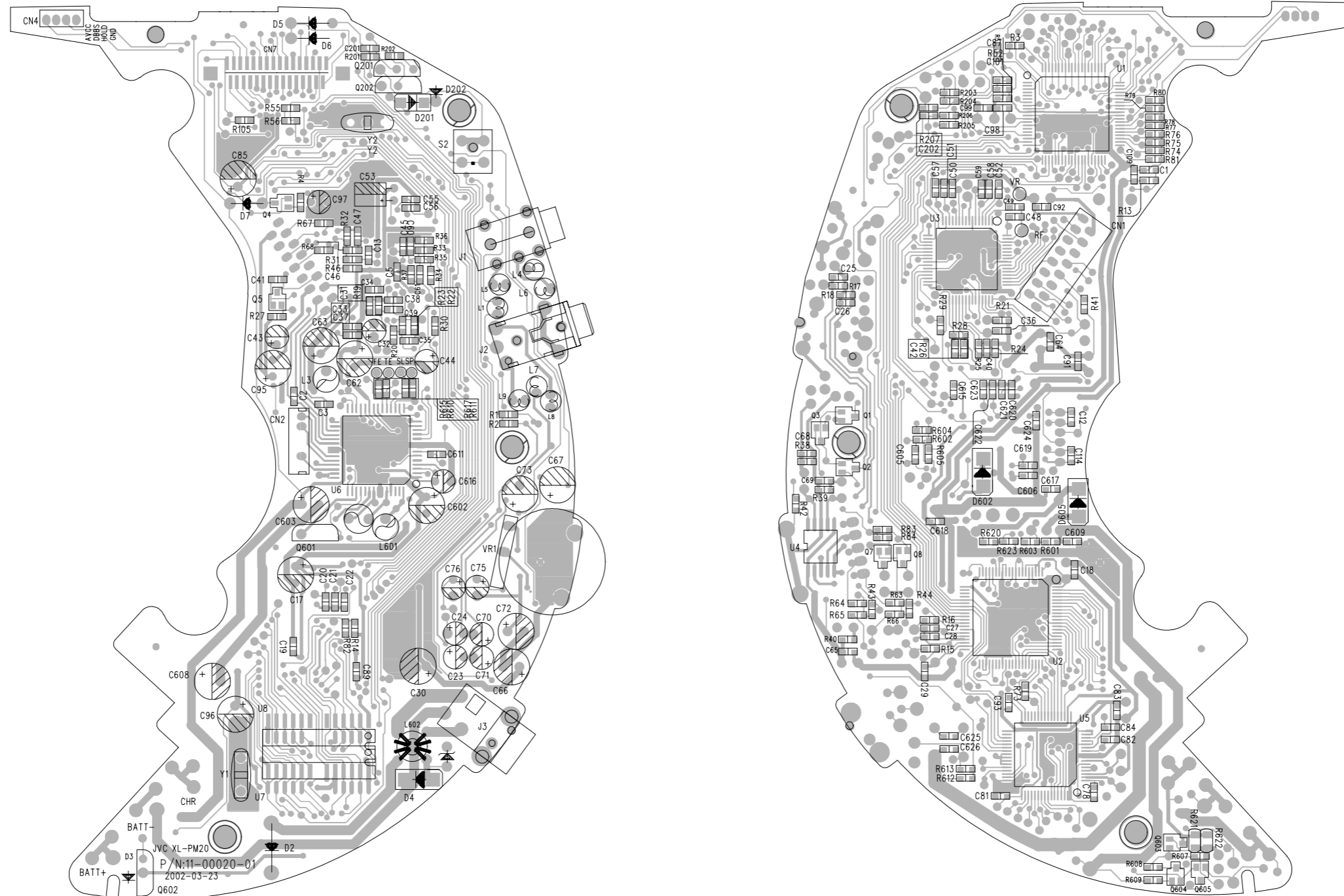
# Printed circuit boards

■ Main board

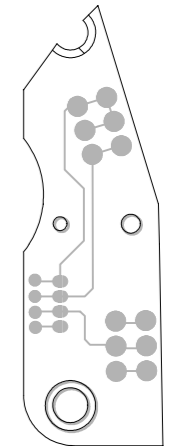
5  
4  
3  
2  
1

Forward side

Reverse side



(HOLD & HBS board)



(HOLD & HBS board)

A B C 24 D E F G H

< MEMO >



**VICTOR COMPANY OF JAPAN, LIMITED**

AUDIO & COMMUNICATION BUSINESS DIVISION

PERSONAL & MOBILE NETWORK BUSINESS UNIT. 10-1,1Chome,Ohwatari-machi,maebashi-city,371-8543,Japan