

# JVC

# SCHEMATIC DIAGRAMS

PORTABLE CD PLAYER

## XL-PM30SL

CD-ROM No.SML200210

Area suffix

C ----- Canada  
 E ----- Continental Europe  
 UJ ----- U.S.Military



COMPACT  
**disc**  
 DIGITAL AUDIO

**MP3**  
 PLAYBACK

### Contents

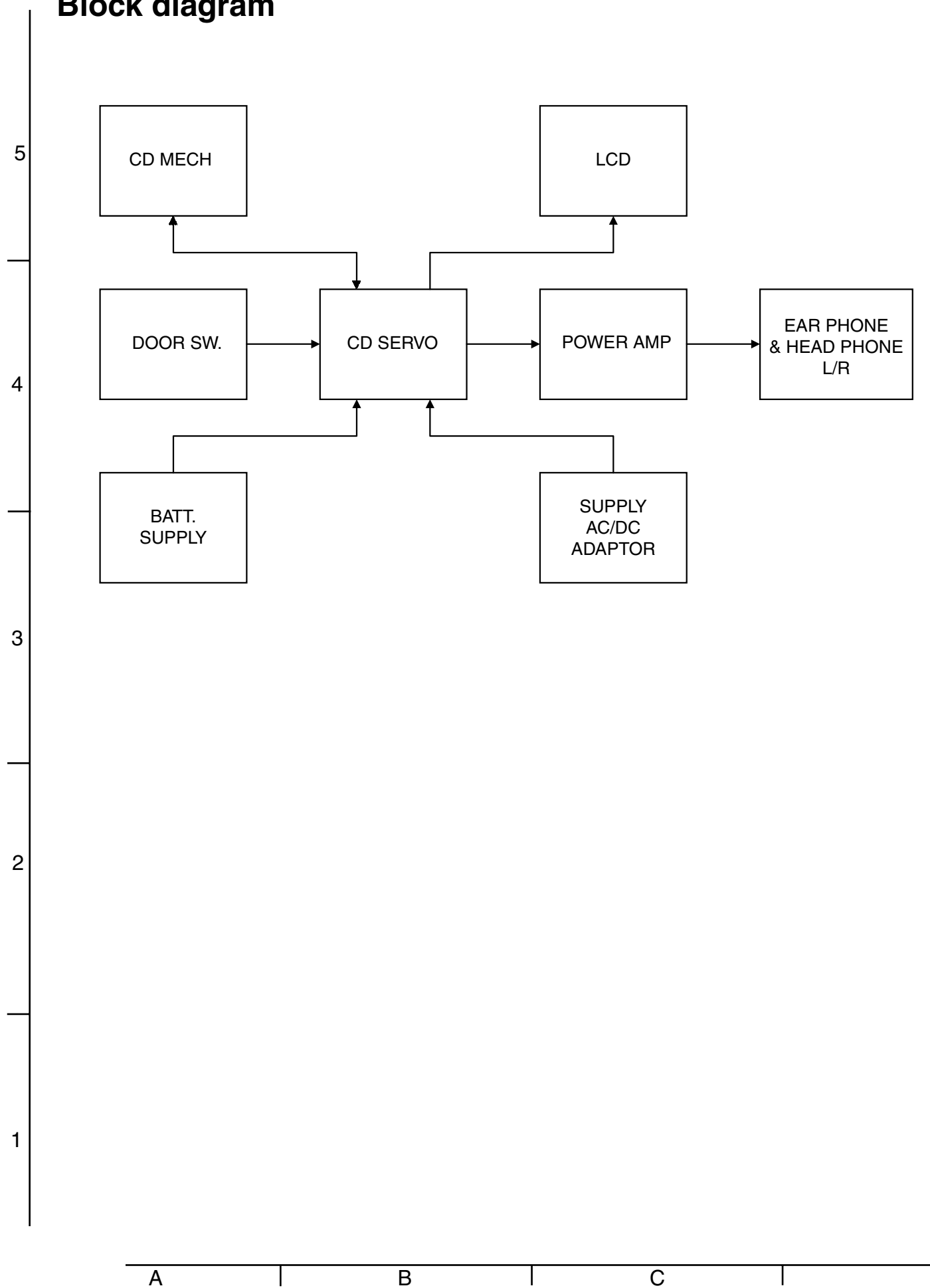
Block diagram .....	2-1
Standard schematic diagram .....	2-3
Printed circuit boards .....	2-4

## XL-PM30SL

In regard with component parts appearing on the silk-screen printed side (parts side) of the PWB diagrams, the parts that are printed over with black such as the resistor (■), diode (⬤) and ICP (●) or identified by the "▲" mark nearby are critical for safety.

(This regulation does not correspond to J and C version.)

# Block diagram



< M E M O >

# Standard schematic diagram

## Main section

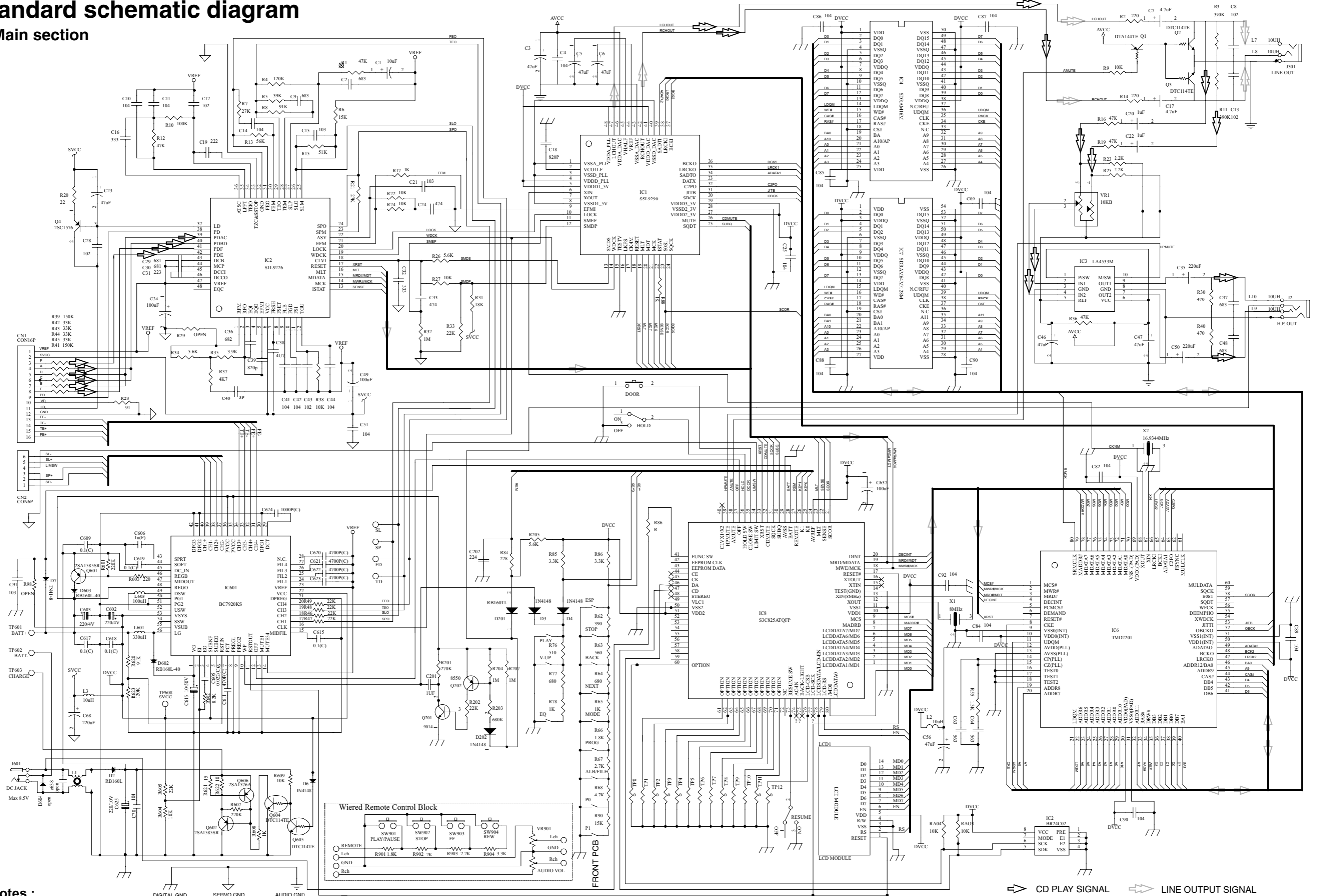
5

4

3

2

1



**Notes :**

1. All resistance values are indicated in ohms (k=1000 ohms, M=1000 Kohms).
2. All capacitance values are indicated in F ( $\mu=10^{-6}$  F).



A

B

C

D

E

F

G

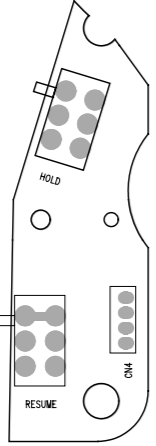
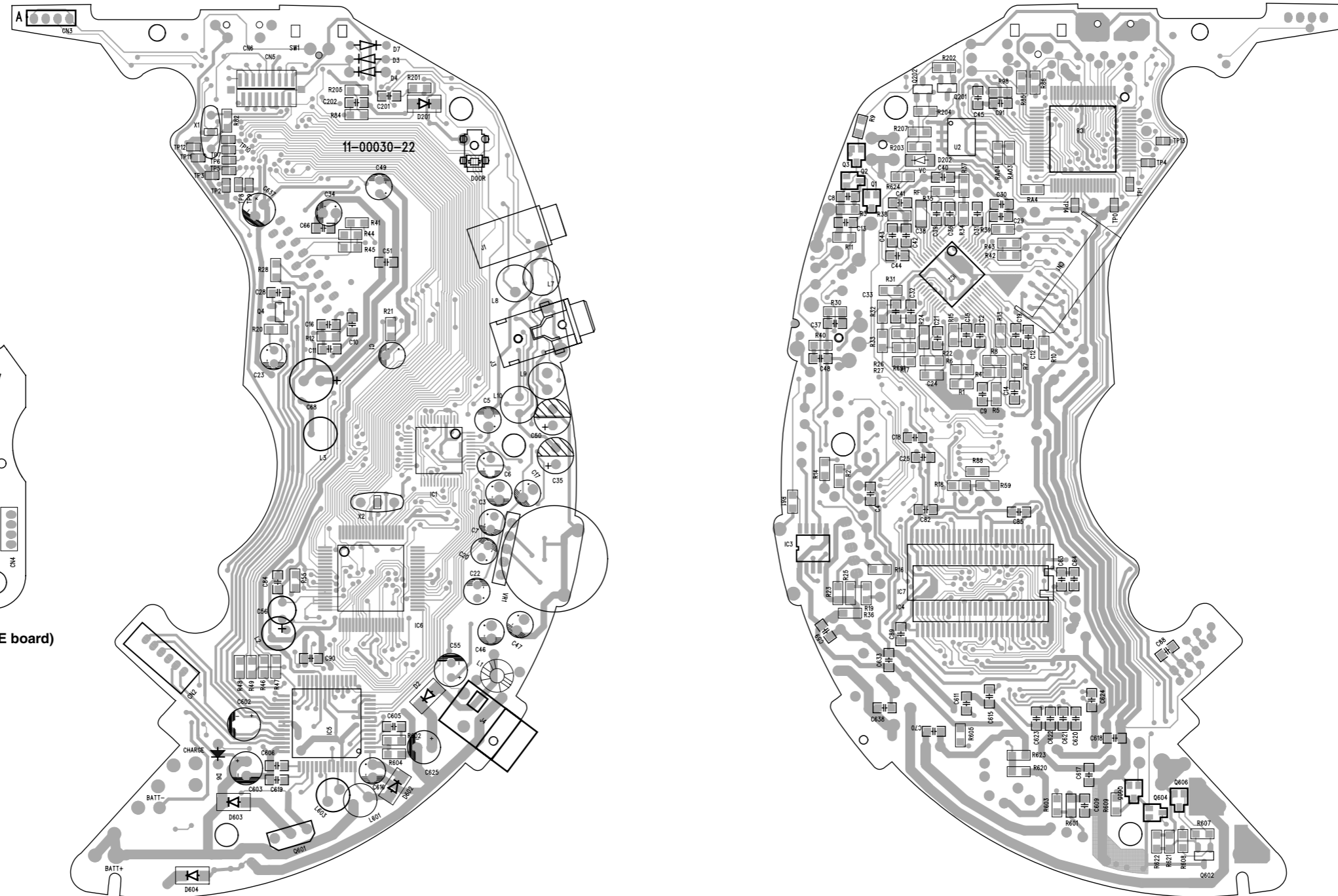
# Printed circuit boards

■ Main board

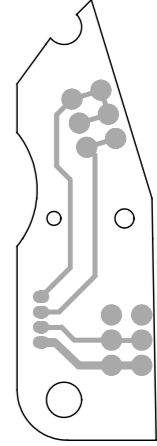
5  
4  
3  
2  
1

Forward side

Reverse side



(HOLD & RESUME board)



(HOLD & RESUME board)

A B C 24 D E F G H

< MEMO >



**VICTOR COMPANY OF JAPAN, LIMITED**

AUDIO & COMMUNICATION BUSINESS DIVISION

PERSONAL & MOBILE NETWORK BUSINESS UNIT. 10-1,1Chome,Ohwatari-machi,maebashi-city,371-8543,Japan