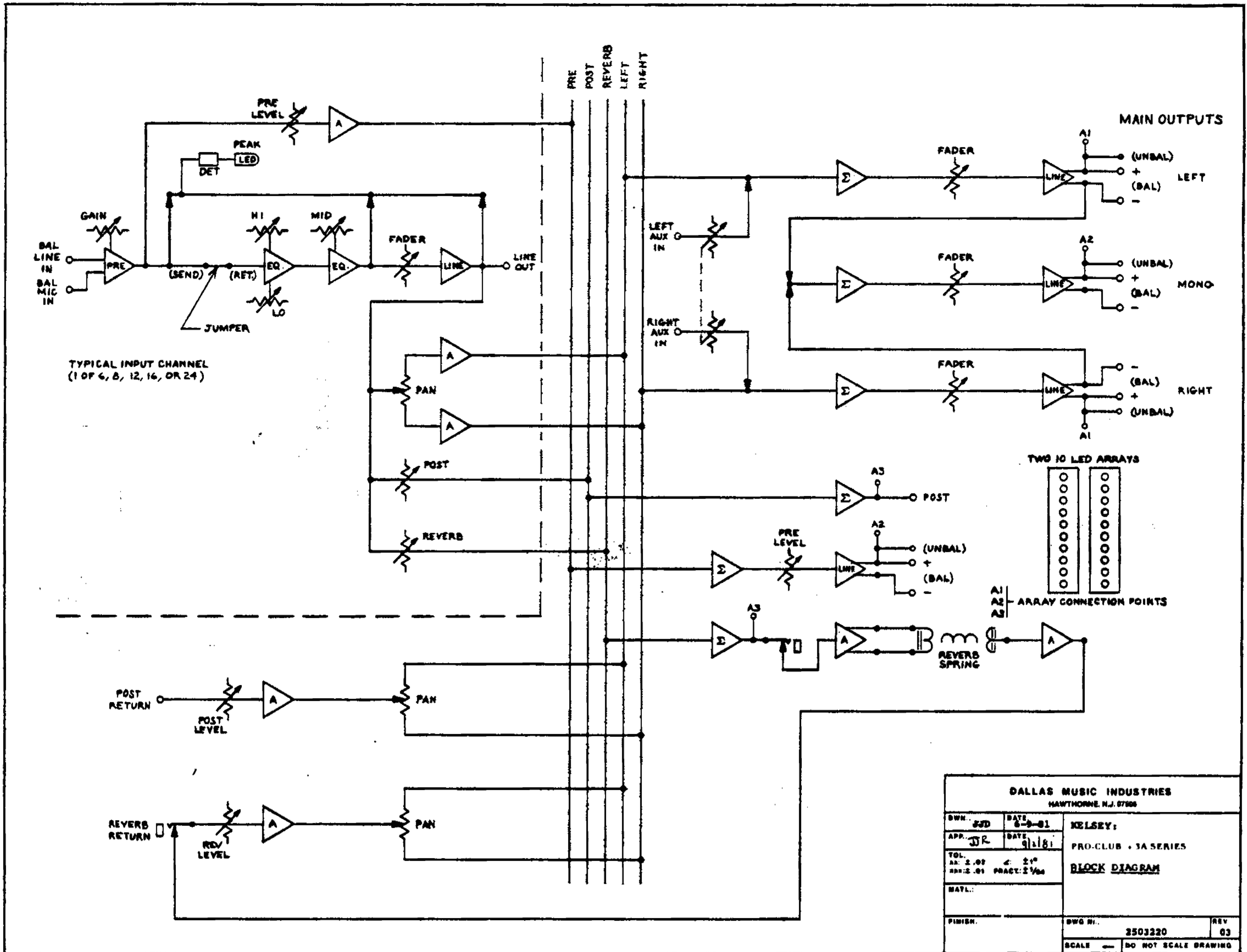


# KELSEY PRO-CLUB



## SPECIFICATIONS

**MAX GAIN:** Mic in- Line out (Bal): 74dB  
Mic in- Pre send: 80dB

**FREQUENCY RESPONSE:**  
Mic in- Line out, +0dB, -3dB: 20Hz to 25kHz

**THD:** Any output level below clipping, 20Hz to 20kHz:  
Less than .04%

**IMD:** SMPTE method, any output level below clipping:  
Less than .02%

**LEAKAGE:** Between channels: Better than 70dB  
Input to Output: Better than 80dB

**UNWEIGHTED EQUIVALENT INPUT NOISE:**  
With 150Ω source: -129dBV RMS

**DYNAMIC RANGE:** Better than 80dB

**MAX INPUT LEVEL:** Mic: +10dBV Line: +30dBV

**MAX OUTPUT LEVEL:** Bal: +24dBV RMS Unbal: +18dBV RMS

**MIN LOAD IMPEDANCE:** 600Ω

**INPUT IMPEDANCE:** Mic: 2KΩ Returns: 50KΩ  
Line: 22KΩ Aux: 7.5KΩ

**CMRR:** Better than 80dB

**OUTPUT IMPEDANCE:** 10Ω all outputs

**LED LEVEL ARRAYS:** Range: 27dB  
Scale: -12dBV to -15dBV

Increments: 3dB

Zero Level: 1v Peak

Detector Law: Full wave peak

Accuracy: ±.5dB

Attack Time: 100 microseconds

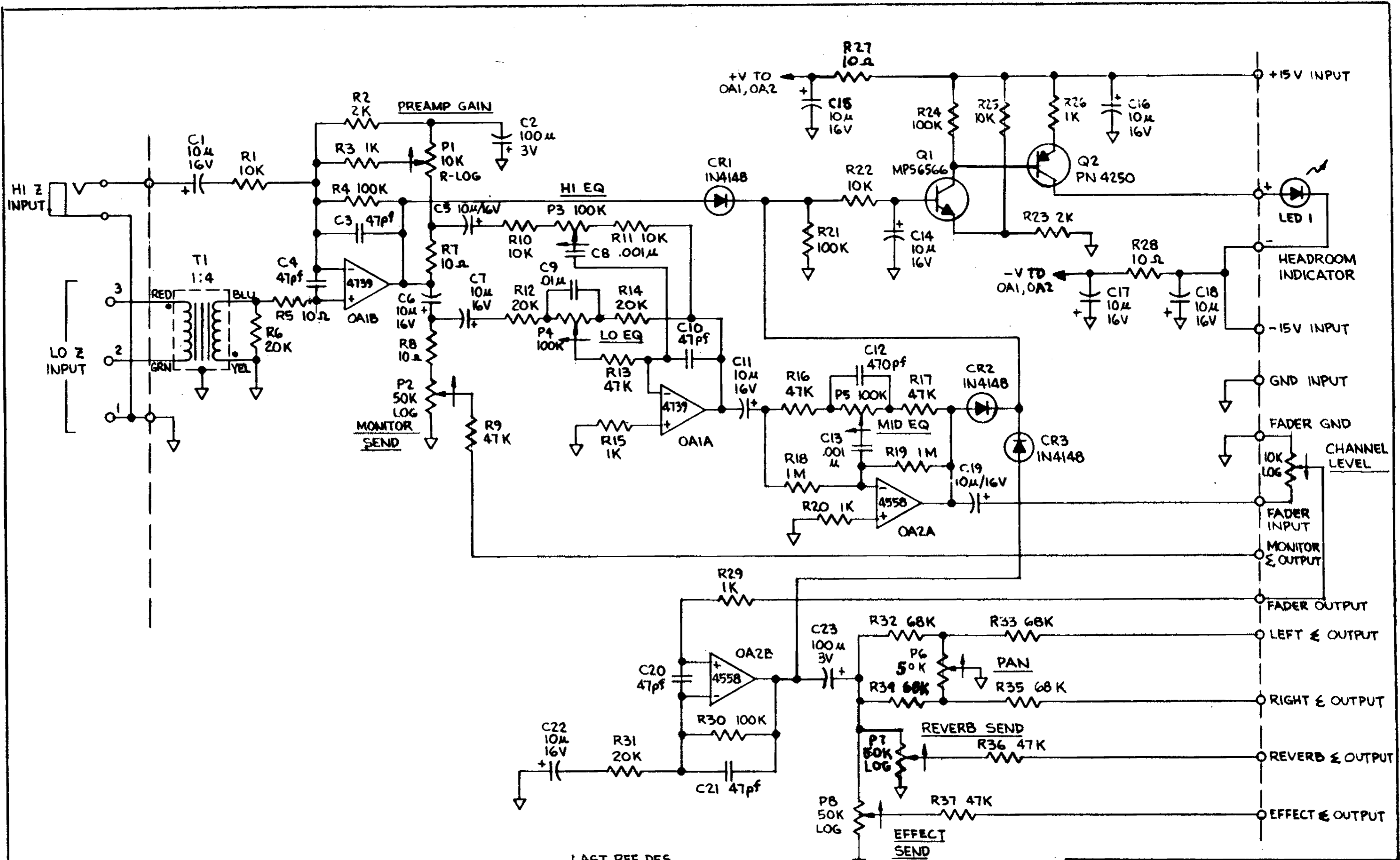
Release Rate: 75dB/second

**INPUT PEAK LED:** +18dBV PK (3 dB Headroom)

**kelsey**

Division of DMI Inc.

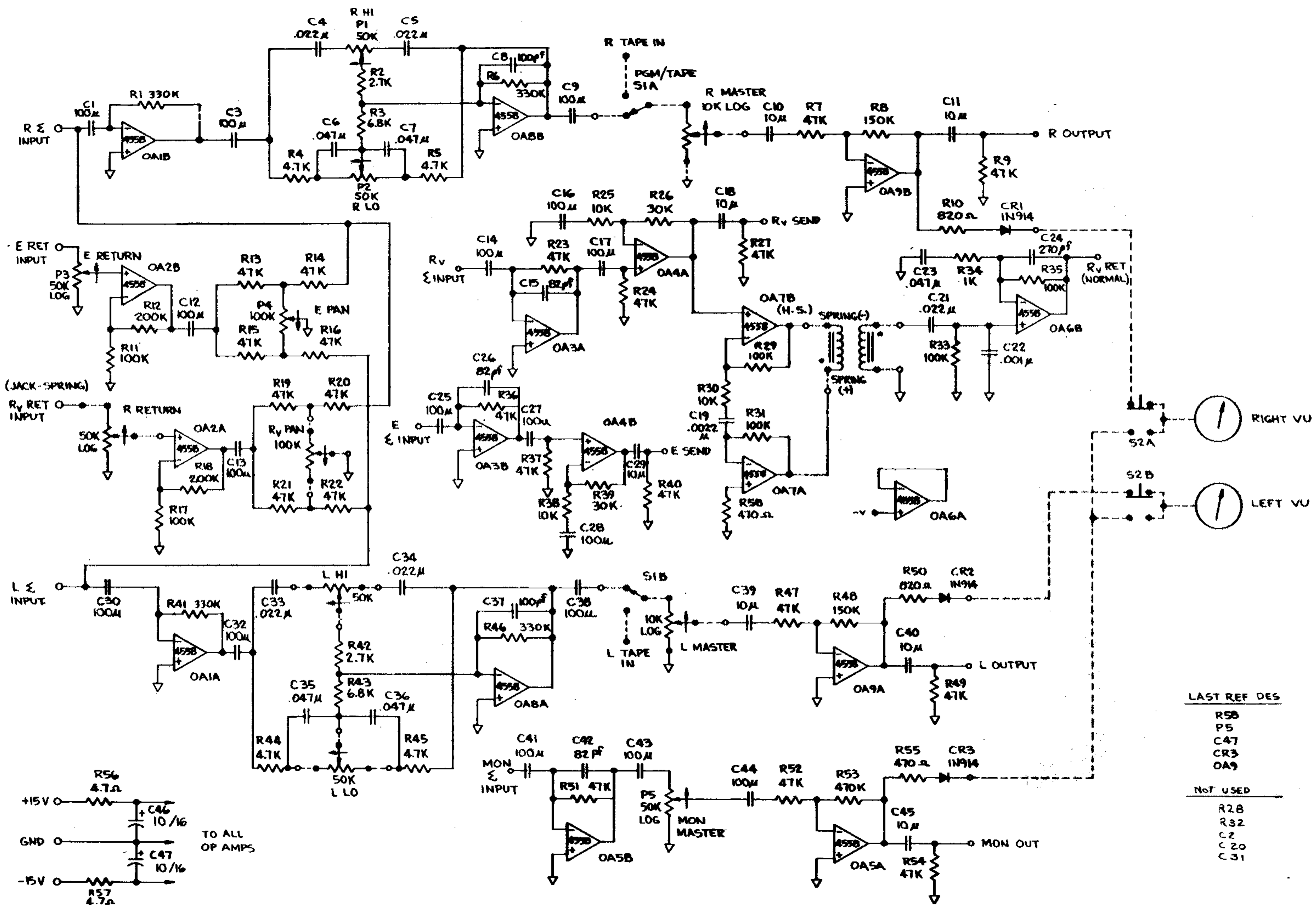
DMI Inc. 150 Florence Ave., Hawthorne, N.J. 07506 USA 201-423-1300 Telex 136571



LAST REF DES

- R37
- PB
- C23
- CR3
- Q2
- OA2
- T1

DALLAS MUSIC INDUSTRIES HAWTHORNE, N. J. 07808				
DWN 4.6	DATE 12/28/78	<b>SCHEMATIC</b> <b>CISI</b> <b>KELSEY PRO-CLUB</b> <b>SERIES STEREO</b> <b>INPUT BOARD</b>		
APP JJP	DATE 10/28/78			
TOL #1 ± .03 & 2" ± .04 #30 ± .01 PRACT 2 1/64				
MTRL				
FINISH	DWG NO. 2103004	REV. 01		
SCALE		DO NOT SCALE DRAWING		



LAST REF DES

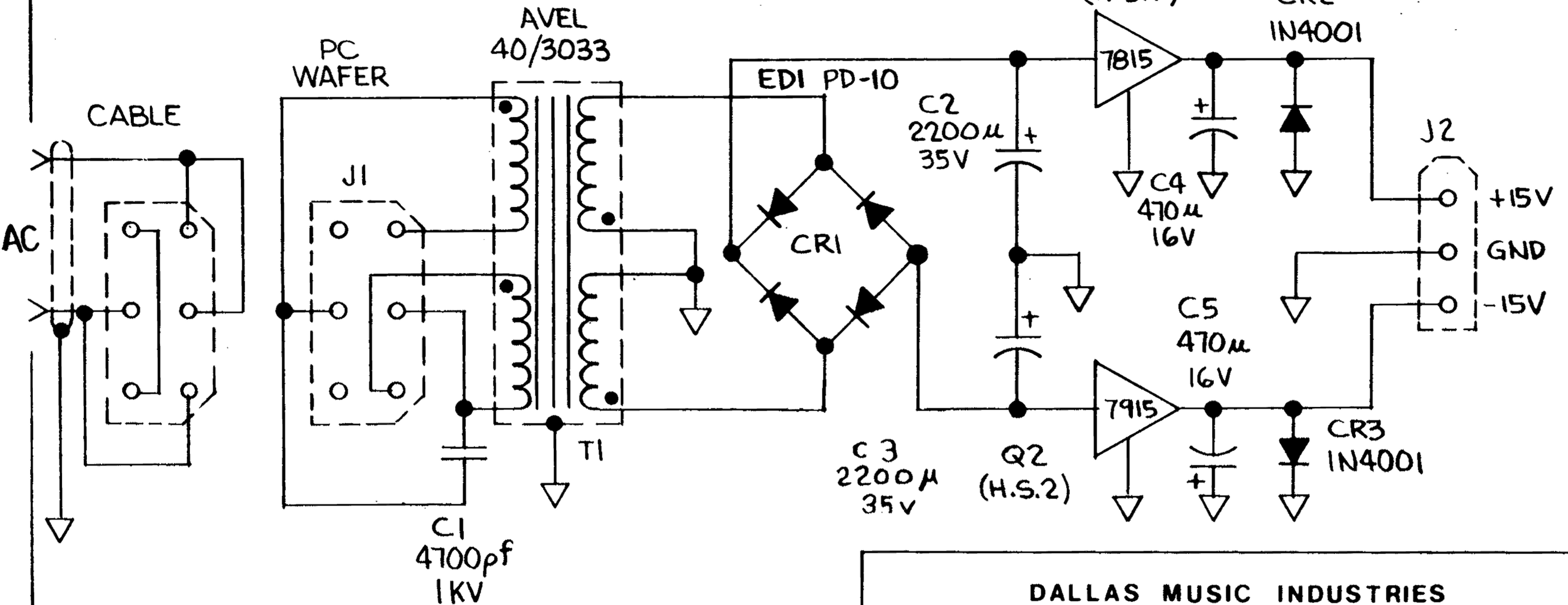
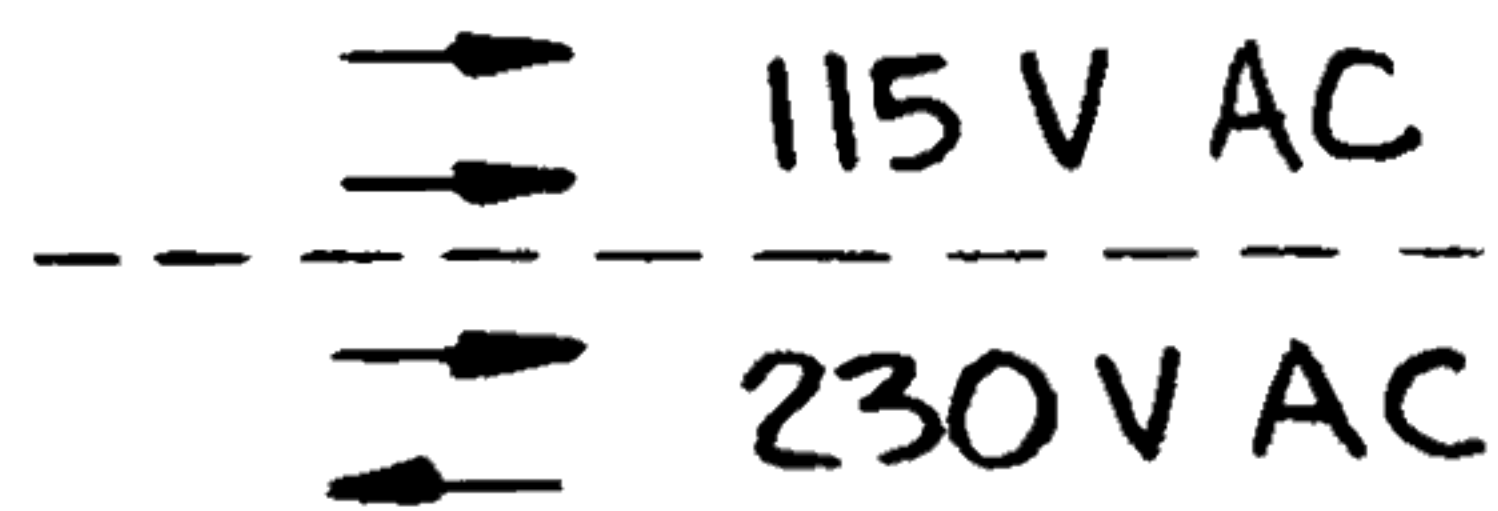
- R58
- P5
- C47
- CR3
- OA9

NOT USED

- R28
- R32
- C2
- C20
- C31

DALLAS MUSIC INDUSTRIES HAWTHORNE, N.J.		DATE: 10/10/78	
APP: JIR	DATE: 10/30/78	SHEMATIC COS6	
VOL: 1.00 ± 2%		KELSEY PRO-CLUB SER	
RES: 2.01		STEREO OUTPUT PC BD	
MATERIAL:		QPL NO: 2104001	REV: 02
FORMER:		SCALE: DO NOT SCALE DRAWING	

CONNECTOR ALIGNMENT



LAST REF DES.

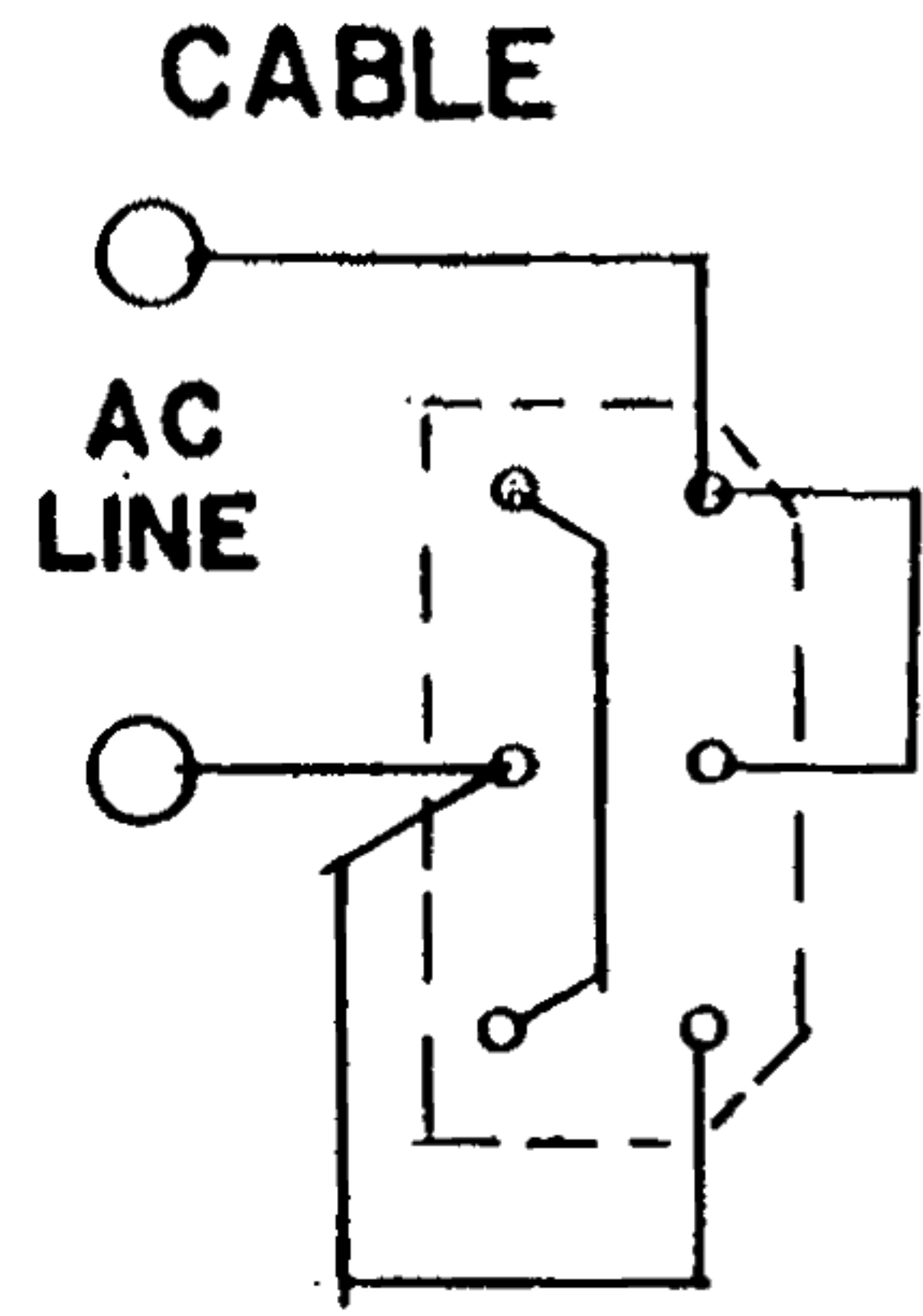
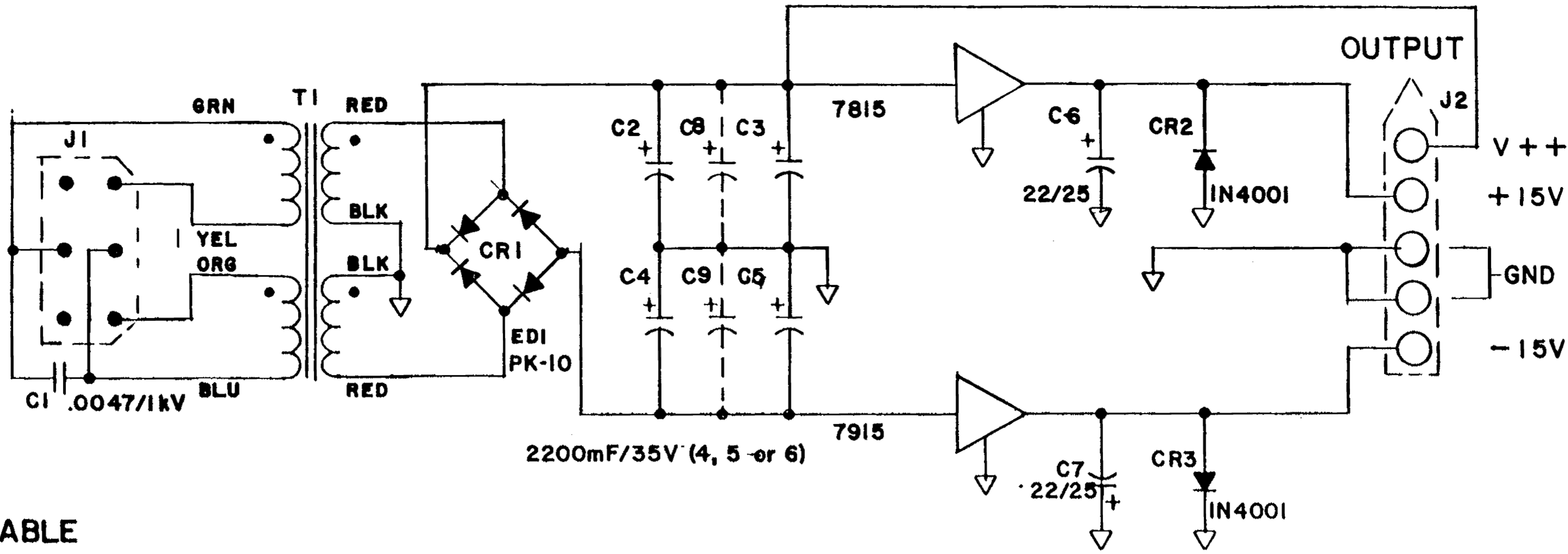
- C5
- CR3
- Q2
- HS2
- J2
- T1

DALLAS MUSIC INDUSTRIES  
HAWTHORNE, N.J. 07506

DWN: <i>JJR</i>	DATE: 12/26/78
APP: JJR	DATE: 12/28/78
TOL: xx: ±.02    ∠: ±1° xxx: ±.01    FRACT: ±1/64	
MATL.:	
FINISH:	

**SCHEMATIC**  
**CPS3**  
**KELSEY PRO-CLUB**  
**SERIES PWR SUPPLY**  
**P.C. BOARD**

DWG. Nr.:	2101007	REV.	01
SCALE:	DO NOT SCALE DRAWING		



→ 115 Volts  
 → 230 Volts

DALLAS MUSIC INDUSTRIES HAWTHORNE, N.J. 07506			
DWN.: JS	DATE: 8/21/80	<b>KELSEY</b> Model 264 <b>POWER SUPPLY</b>	
APP.: JJR	DATE: 8/25/80		
TOL.: xx: ±.02    ∠: ±1° xxx: ±.01    FRACT: ±1/64			
MATL.:		DWG. No. 2102264	
FINISH:		REV. 00	
SCALE:		DO NOT SCALE DRAWING	