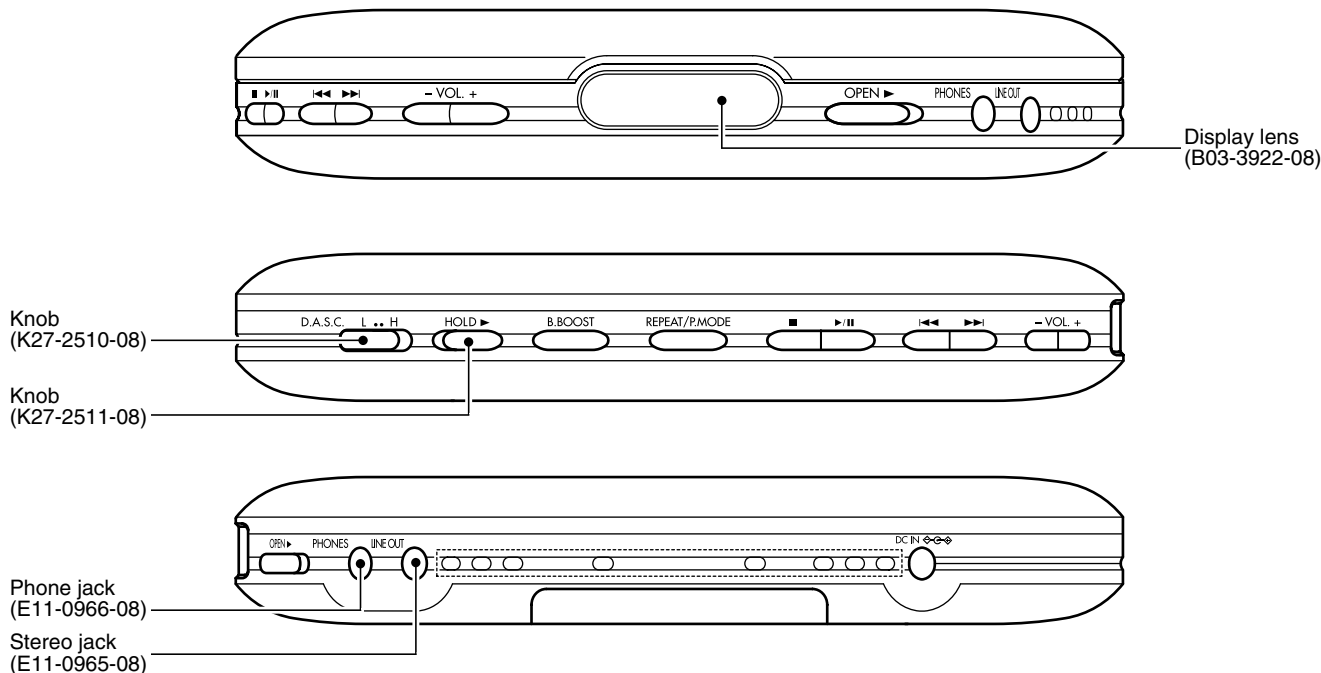


# DPC-X527-H/X527-S

## SERVICE MANUAL

© 2002-10 PRINTED IN KOREA  
B51-5837-00 (K/K) 581



## SPECIFICATIONS

<b>Format</b>	System.....	Compact disc digital audio system
	Laser.....	Semiconductor laser
<b>Audio</b>	Frequency response.....	20 Hz to 20 kHz, ± 3 dB
	PHONES output level (32Ω, 1 kHz ).....	3 mW + 3 mW
	Line output/impedance	
	Bass Boost ON :.....	0.83 Vrms/1 kΩ
	Bass Boost OFF :.....	0.31 Vrms/1 kΩ

### Power supply

Commercially-available alkaline batteries (R03/AAA) x 2..... DC 3 V

### Battery life (From fully-charged condition)

	D.A.S.C. L	D.A.S.C. H
Commercially-available alkaline batteries (R03/AAA)	Approx. 8 Hours	Approx. 14 Hours

- At 0.1 mW + 0.1 mW power (32W load)
- Typical values in recharging/continuous operation at an ambient temperature of 20°C.
- The values are variable depending on the battery manufacturer, battery type, operating environment and temperature.

**Dimensions (W x H x D)**.....150 mm x 22.7 mm x 130 mm (5- 7/8" x 7/8" x 5-1/8")

**Weight (net)**..... 176 g (6.2 oz)

### Note:

KENWOOD follows a policy of continuous advancements in development. For this reason specifications may be changed without notice.

In compliance with Federal Regulations, following are reproduction of labels on, or inside the product relating to laser product safety.

KENWOOD Corp. certifies this equipment conforms to DHHS Regulations No.21 CFR 1040. 10, Chapter 1, subchapter J.

**DANGER : Laser radiation when open and interlock defeated. AVOID DIRECT EXPOSURE TO BEAM.**



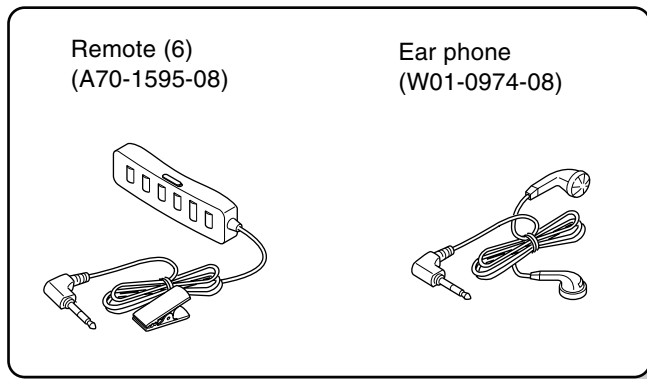
# DPC-X527-H/X527-S

## CONTENTS / ACCESSORIES

### Contents

CONTENTS / ACCESSORIES .....	2	EXPLODED VIEW .....	7
PC BOARD .....	3	PARTS LIST .....	8
SCHEMATIC DIAGRAM .....	5	SPECIFICATIONS .....	Top cover

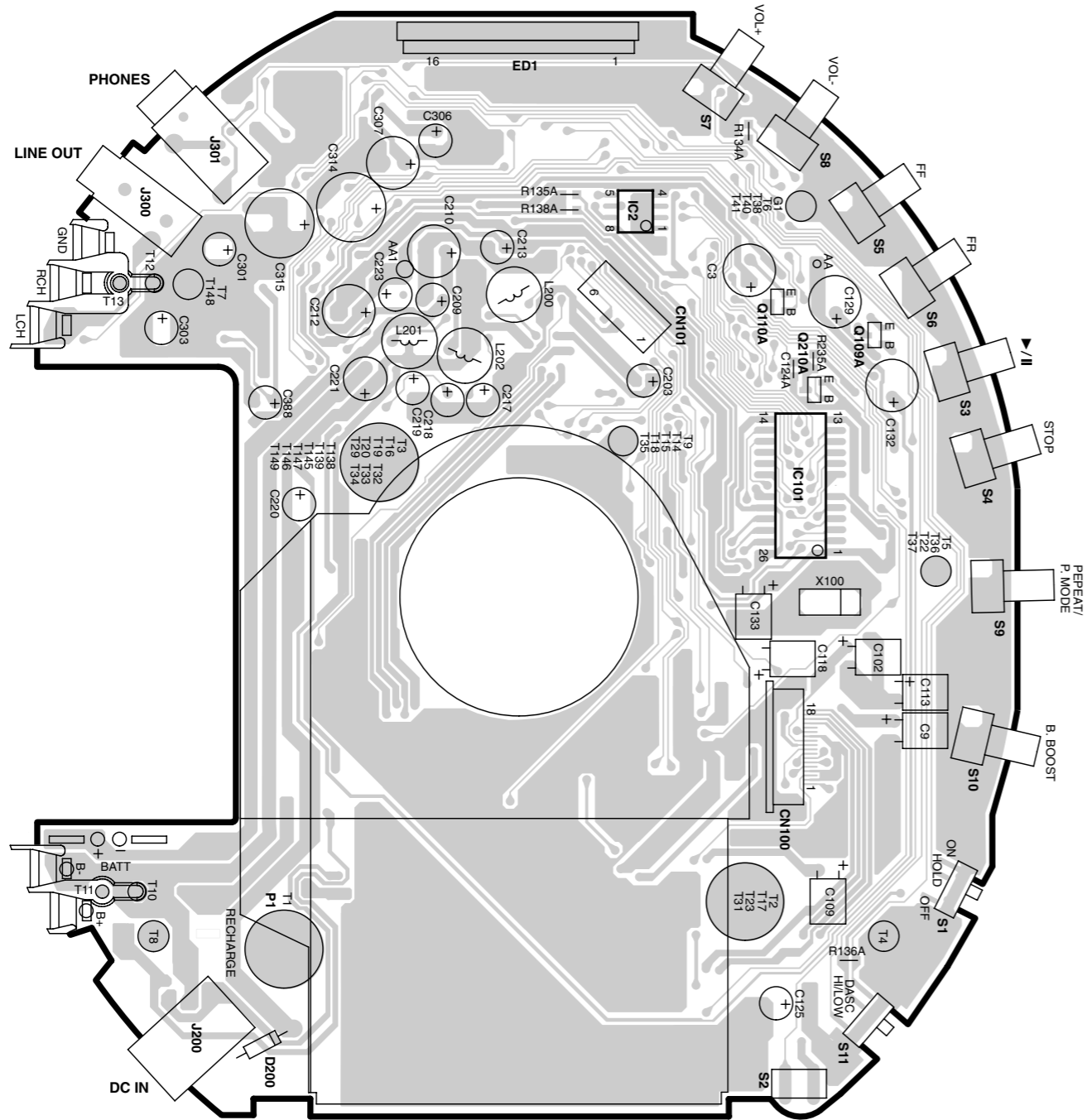
### Accessories



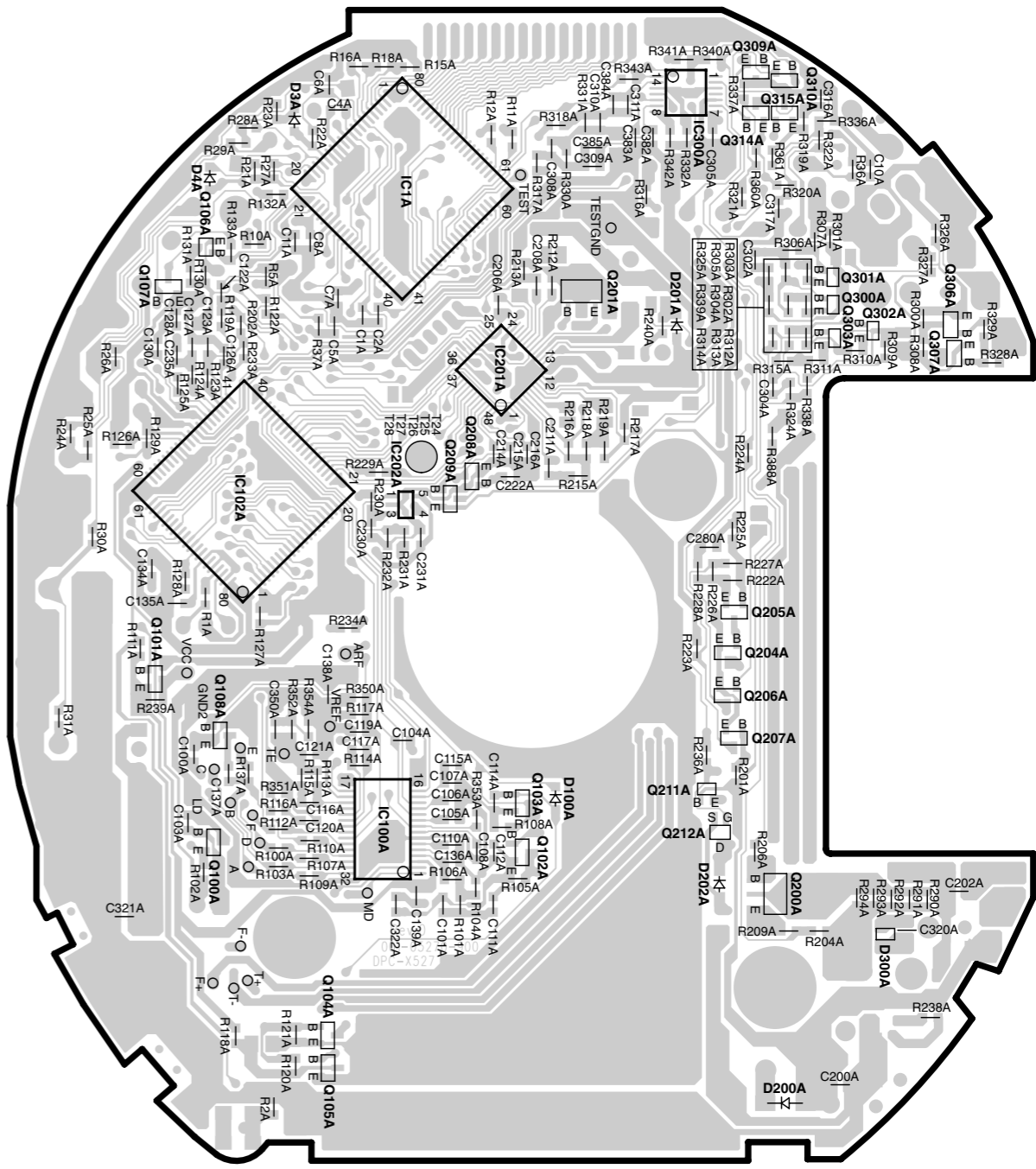
# PC BOARD

1  
2  
3  
4  
5  
6  
7

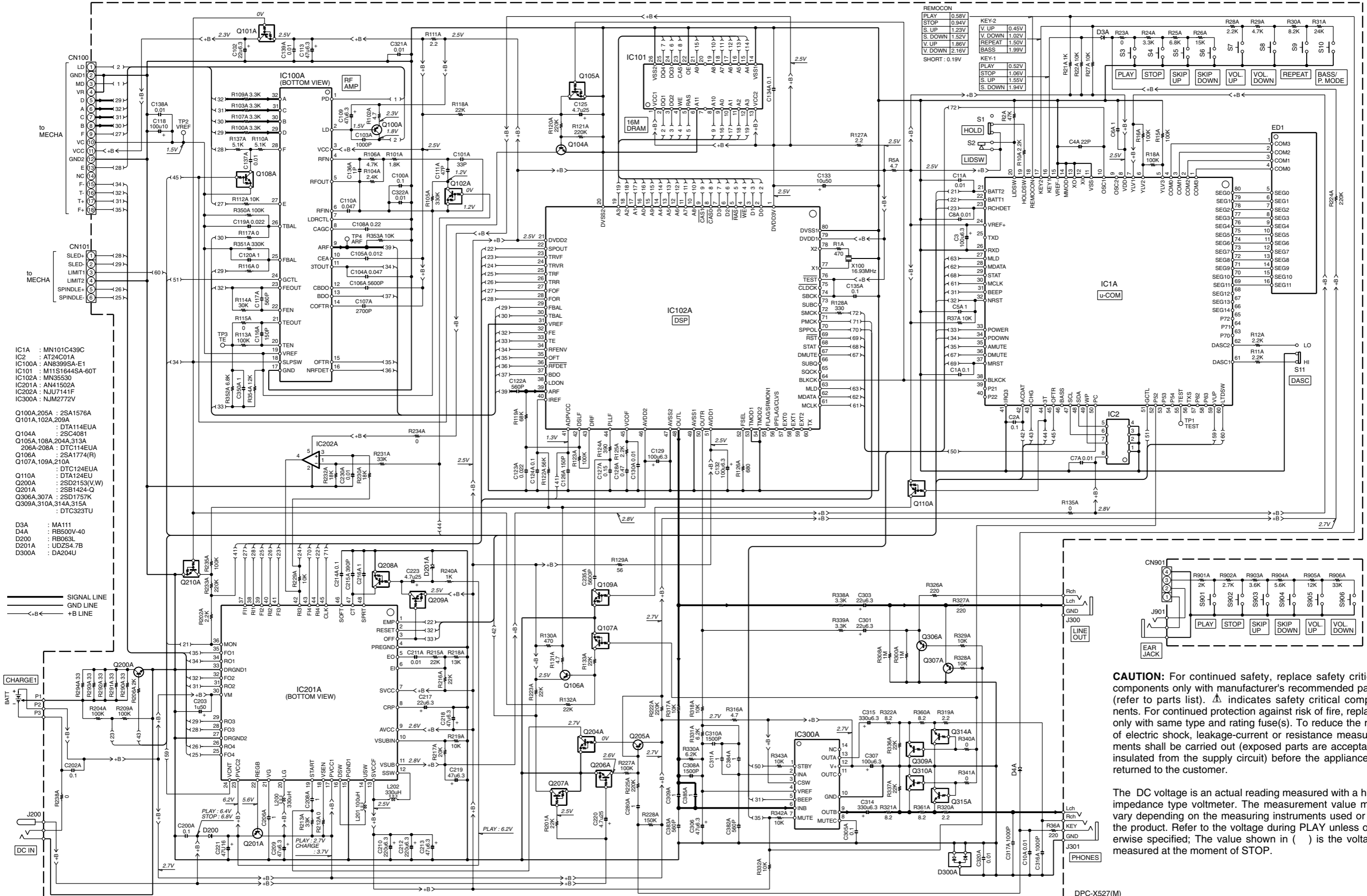
### (SIDE A)



### (SIDE B)



Refer to the schematic diagram for the value of resistors and capacitors.



- IC1A : MN101C439C  
 IC2 : AT24CO1A  
 IC100A : AN8399SA-E1  
 IC101 : M1151644SA-60T  
 IC102A : MN35530  
 IC201A : AN41502A  
 IC202A : NJU7141F  
 IC300A : NJM2772V
- Q100A,205A : 2SA1576A  
 Q101A,102A,209A : DTA114EUA  
 Q104A : 2SC4081  
 Q105A,108A,204A,313A : DTC114EUA  
 206A-208A : DTC114EUA  
 Q106A : 2SA1774(R)  
 Q107A,109A,210A : DTC124EUA  
 Q110A : DTA124EU  
 Q200A : 2SD2153(V,W)  
 Q201A : 2SB1424-Q  
 Q306A,307A : 2SD1757K  
 Q309A,310A,314A,315A : DTC323TU
- D3A : MA111  
 D4A : RB500V-40  
 D200 : RB063L  
 D201A : UDZ54.7B  
 D300A : DA204U

SIGNAL LINE  
 GND LINE  
 +B LINE

**CAUTION:** For continued safety, replace safety critical components only with manufacturer's recommended parts (refer to parts list).  $\Delta$  indicates safety critical components. For continued protection against risk of fire, replace only with same type and rating fuse(s). To reduce the risk of electric shock, leakage-current or resistance measurements shall be carried out (exposed parts are acceptably insulated from the supply circuit) before the appliance is returned to the customer.

The DC voltage is an actual reading measured with a high impedance type voltmeter. The measurement value may vary depending on the measuring instruments used or on the product. Refer to the voltage during PLAY unless otherwise specified; The value shown in ( ) is the voltage measured at the moment of STOP.

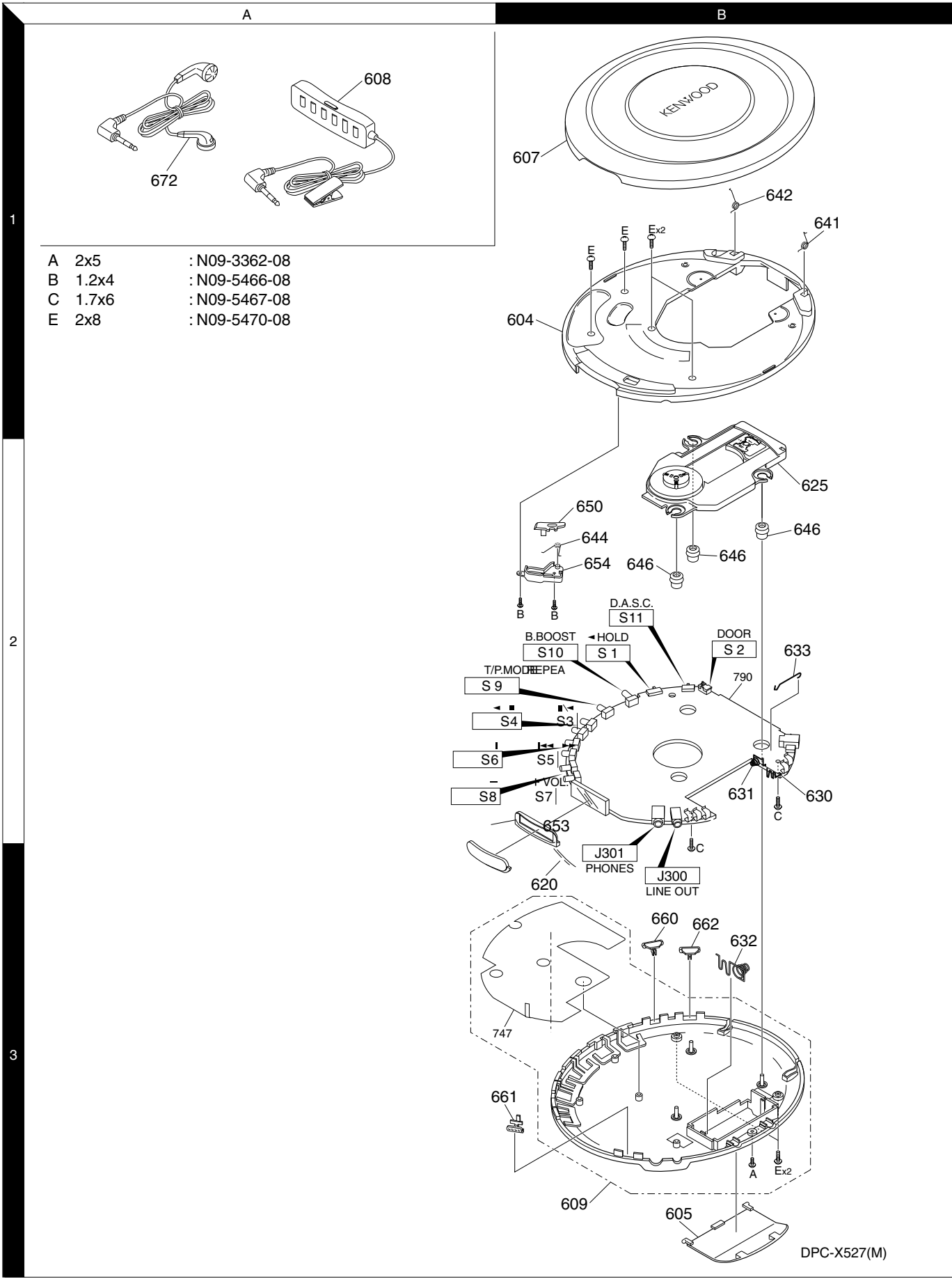
# DPC-X527-H/X527-S

Y22-8630-21

KENWOOD

# DPC-X527-H/X527-S

## EXPLODED VIEW



- |   |       |               |
|---|-------|---------------|
| A | 2x5   | : N09-3362-08 |
| B | 1.2x4 | : N09-5466-08 |
| C | 1.7x6 | : N09-5467-08 |
| E | 2x8   | : N09-5470-08 |

DPC-X527(M)

Parts with exploded numbers larger than 700 are not supplied.

\* New Parts  
Parts without **Parts No.** are not supplied.  
Les articles non mentionnés dans le **Parts No.** ne sont pas fournis.  
Teile ohne **Parts No.** werden nicht geliefert.

①

Ref. No	Add-ress	New Parts	Parts No.	Description	Desti-nation	Re-marks
<b>DPC-X527 H:DPC-X527-H, S:DPC-X527-S</b>						
604	1B	*	A02-3070-08	TOP CAB. (L.GR 103-05271-001)		
605	3B	*	A09-1273-08	BATTERY DOOR (111-05270-0895)		
607	1B	*	F07-2011-08	DOOR ASSY(M) DPCX527H-C-0266	H	
607	1B	*	F07-2008-08	DOOR ASSY(M) DPCX527S-C-0266	S	
608	1A	*	A70-1595-08	6 KEY REMOTE C 182-03210-001		
609	3B	*	-	BOTTOM CAB ASSY		
-		*	B60-5307-08	I/B (EN) "KEN 152-05271-0266		
620	3B	*	B03-3922-08	DISPLAY LENS (117-05270-000)	H	
625	2B	*	D40-1810-08	SANYO CD MECHN 160-00050-001		
630	2B	*	E23-1873-08	BATTERY CONTACT 041-05271-102		
631	2B	*	E23-1874-08	BATTERY CONTACT041-05272-002		
632	3B	*	E23-1875-08	BATTERY CONTACT041-05273-002		
633	2B	*	E23-1876-08	RECHARGE CONTACT133-05270-002		
641	1B	*	G01-4335-08	DOOR SPRING (R)162-05271-306		
642	1B	*	G01-4336-08	DOOR SPRING (L)162-05272-306		
644	2B	*	G01-4338-08	OPEN KNOB SPRIN133-05270-305		
646	2B	*	G13-2520-08	CD RUBBER CUSHI161-02830-001		
-		*	H50-4652-08	G/B (M TY) "KEN151-05274-0266	S	
-		*	H50-4653-08	G/B (M TY) "KEN151-05276-0266	H	
-		*	H25-1603-08	EPE FOAM BAGS W150-07009-203		
-		*	H25-1649-08	POLYBAG 6X10 W/150-06010-210		
650	2B	*	J19-6363-08	DOOR HOOK (BLAC130-05278-010)		
653	2B	*	J19-6366-08	LCD MOUNTING B 129-05275-0887		
654	2B	*	J19-6367-08	DOOR HOOK BRACK129-05279-010		
660	3B	*	K27-2511-08	HOLD KNOB (CHR 127-05276-013)		
661	3B	*	K27-2513-08	OPEN KNOB (CHR 127-05272-513)		
662	3B	*	K27-2510-08	DASC KNOB (CHR 127-05272-613)		
A		*	N09-3362-08	SCREW 2X5 STR 144-52005-122		
B		*	N09-5466-08	SCREW 1.2X4 PB 144-11204-102		
E		*	N09-5470-08	SCREW 2X8 STR (144-52008-122)		
672	1A	*	W01-0974-08	ST.EAR PHONE K 053-21532-101		
<b>ELECTRIC PARTS</b>						
C1A,2A			CK73GB1H104K	CHIP C	0.10UF	K
C3			CE04LW0J101M	ELECTRO	100UF	6.3WV
C4A			CC73GCH1H220J	CHIP C	22PF	J
C5A,6A			CK73GB1H105Z	CHIP C	1.0UF	Z
C7A,8A			CK73GB1H103K	CHIP C	0.010UF	K
C10A,11A			CK73GB1H103K	CHIP C	0.010UF	K
C100A			CK73GB1H104K	CHIP C	0.10UF	K
C101A			CC73GCH1H330J	CHIP C	33PF	J
C102			CE04CW0J220M	ELECTRO	22UF	6.3WV
C103A			CK73GB1H102K	CHIP C	1000PF	K
C104A			CK73GB1H473K	CHIP C	0.047UF	K
C105A			CK73GB1H123K	CHIP C	0.012UF	K
C106A			CK73GB1H562K	CHIP C	5600PF	K
C107A			CK73GB1H272K	CHIP C	2700PF	K
C108A			CK73GB1C224K	CHIP C	0.22UF	K
C109			CE04CW0J470M	ELECTRO	47UF	6.3WV
C110A			CK73GB1H473K	CHIP C	0.047UF	K

L : Scandinavia K : USA P : Canada R : Mexico C : China I : Malaysia  
Y : PX(Far East,Hawaii) T : England E : Europe G : Germany V : China(Shanghai)  
Y : AAFES(Europe) X : Australia Q : Russia H : Korea M : Other Areas  $\Delta$  indicates safety critical components.

\* New Parts  
Parts without **Parts No.** are not supplied.  
Les articles non mentionnés dans le **Parts No.** ne sont pas fournis.  
Teile ohne **Parts No.** werden nicht geliefert.

②

Ref. No	Add-ress	New Parts	Parts No.	Description	Desti-nation	Re-marks
C111A			CC73GCH1H470J	CHIP C	47PF	J
C113			CE04CW0J470M	ELECTRO	47UF	6.3WV
C116A			CK73GB1H151J	CHIP C	150PF	J
C117A			CK73GB1H561J	CHIP C	560PF	J
C118			CE04CW1A101M	ELECTRO	100UF	10WV
C119A			CK73GB1H223K	CHIP C	0.022UF	K
C120A			CK73GB1H105Z	CHIP C	1.0UF	Z
C122A			CK73GB1H561J	CHIP C	560PF	J
C123A			CK73GB1H223K	CHIP C	0.022UF	K
C124A			CK73GB1H104K	CHIP C	0.10UF	K
C125			CE04LW1E4R7M	ELECTRO	4.7UF	25WV
C126A			CK73GB1H151J	CHIP C	150PF	J
C127A			CK73GB1H154K	CHIP C	0.15UF	K
C128A			CK73FB1H474K	CHIP C	0.47UF	K
C129			CE04LW0J101M	ELECTRO	100UF	6.3WV
C130A			CK73GB1H103K	CHIP C	0.010UF	K
C132			CE04LW0J101M	ELECTRO	100UF	6.3WV
C133			CE04CW1A100M	ELECTRO	10UF	10WV
C134A,135A			CK73GB1H104K	CHIP C	0.10UF	K
C136A			CC73GCH1H010C	CHIP C	1.0PF	C
C137A-139A			CK73GB1H103K	CHIP C	0.010UF	K
C200A			CK73GB1H104K	CHIP C	0.10UF	K
C202A			CK73GB1H104K	CHIP C	0.10UF	K
C203			CE04LW1H010M	ELECTRO	1.0UF	50WV
C206A			CK73GB1H105Z	CHIP C	1.0UF	Z
C208A			CK73GB1H105Z	CHIP C	1.0UF	Z
C209			CE04CW0J470M	ELECTRO	47UF	6.3WV
C210			CE04LW0J221M	ELECTRO	220UF	6.3WV
C211A			CK73GB1H103K	CHIP C	0.010UF	K
C212			CE04LW0J221M	ELECTRO	220UF	6.3WV
C213			CE04CW0J470M	ELECTRO	47UF	6.3WV
C214A			CK73GB1H104K	CHIP C	0.10UF	K
C215A			CK73GB1H391J	CHIP C	390PF	J
C216A			CK73GB1H105Z	CHIP C	1.0UF	Z
C217			CE04CW0J220M	ELECTRO	22UF	6.3WV
C218,219			CE04CW0J470M	ELECTRO	47UF	6.3WV
C220			CE04LW1E4R7M	ELECTRO	4.7UF	25WV
C221			CE04LW1C470M	ELECTRO	47UF	16WV
C223			CE04LW1E4R7M	ELECTRO	4.7UF	25WV
C230A			CK73GB1H103K	CHIP C	0.010UF	K
C235A			CK73GB1H562K	CHIP C	5600PF	K
C280A			CK73GB1H105Z	CHIP C	1.0UF	Z
C301			CE04CW0J220M	ELECTRO	22UF	6.3WV
C303			CE04CW0J220M	ELECTRO	22UF	6.3WV
C305A			CK73GB1H104K	CHIP C	0.10UF	K
C306			CE04CW0J470M	ELECTRO	47UF	6.3WV
C307			CE04LW0J101M	ELECTRO	100UF	6.3WV
C308A			CK73GB1H152K	CHIP C	1500PF	K
C309A			CK73GB1H105Z	CHIP C	1.0UF	Z
C310A			CK73GB1H152K	CHIP C	1500PF	K
C311A			CK73GB1H105Z	CHIP C	1.0UF	Z
C314,315			CE04LW0J331M	ELECTRO	330UF	6.3WV
C316A,317A			CK73GB1H102K	CHIP C	1000PF	K
C320A-322A			CK73GB1H103K	CHIP C	0.010UF	K
C350A			CK73GB1H105Z	CHIP C	1.0UF	Z

L : Scandinavia K : USA P : Canada R : Mexico C : China I : Malaysia  
Y : PX(Far East,Hawaii) T : England E : Europe G : Germany V : China(Shanghai)  
Y : AAFES(Europe) X : Australia Q : Russia H : Korea M : Other Areas  $\Delta$  indicates safety critical components.

\* New Parts  
 Parts without **Parts No.** are not supplied.  
 Les articles non mentionnés dans le **Parts No.** ne sont pas fournis.  
 Teile ohne **Parts No.** werden nicht geliefert.

3

Ref. No	Add-ress	New Parts	Parts No.	Description	Desti-nation	Re-marks
C382A,383A C384A,385A			CK73GB1H561J CK73GB1H105Z	CHIP C 560PF J CHIP C 1.0UF Z		
CN100 CN101 J200 J300 J301		*	E60-0009-08 E41-0897-08 E63-1006-08 E11-0965-08 E11-0966-08	18P FPC CONN. 025-50018-303 6P WAFER H-TYP 025-20006-105 DC JACK 3PINS (021-34503-101) STEREO JACK EJ 021-23505-101 ST.P/H JACK ST 021-23505-105		
L200 L201 L202 X100		*	L33-1652-08 L33-1651-08 L33-1652-08 L78-0759-08	INDUCTOR 330 U 015-00331-006 CHOCK COIL 100 015-00101-006 INDUCTOR 330 U 015-00331-006 CERAMIC RESONA 052-16930-104		
R1A R2A R5A R10A-12A R15A,16A			RK73GB1J471J RK73GB1J473J RK73GB1J4R7J RK73GB1J222J RK73GB1J104J	CHIP R 470 J 1/16W CHIP R 47K J 1/16W CHIP R 4.7 J 1/16W CHIP R 2.2K J 1/16W CHIP R 100K J 1/16W		
R18A R21A R22A R23A R24A			RK73GB1J104J RK73GB1J113J RK73GB1J103J RK73GB1J000J RK73GB1J332J	CHIP R 100K J 1/16W CHIP R 11K J 1/16W CHIP R 10K J 1/16W CHIP R 0 J 1/16W CHIP R 3.3K J 1/16W		
R25A R26A R27A R28A R29A			RK73GB1J682J RK73GB1J153J RK73GB1J103J RK73GB1J222J RK73GB1J472J	CHIP R 6.8K J 1/16W CHIP R 15K J 1/16W CHIP R 10K J 1/16W CHIP R 2.2K J 1/16W CHIP R 4.7K J 1/16W		
R30A R31A R36A R37A R100A			RK73GB1J822J RK73GB1J243J RK73GB1J221J RK73GB1J103J RK73GB1J332J	CHIP R 8.2K J 1/16W CHIP R 24K J 1/16W CHIP R 220 J 1/16W CHIP R 10K J 1/16W CHIP R 3.3K J 1/16W		
R101A R102A R103A R104A R105A			RK73GB1J182J RK73GB1J4R7J RK73GB1J332J RK73GB1J242J RK73GB1J334J	CHIP R 1.8K J 1/16W CHIP R 4.7 J 1/16W CHIP R 3.3K J 1/16W CHIP R 2.4K J 1/16W CHIP R 330K J 1/16W		
R106A R107A R109A R110A R111A			RK73GB1J472J RK73GB1J332J RK73GB1J332J RK73GB1J512J RK73GB1J2R2J	CHIP R 4.7K J 1/16W CHIP R 3.3K J 1/16W CHIP R 3.3K J 1/16W CHIP R 5.1K J 1/16W CHIP R 2.2 J 1/16W		
R112A R113A R114A R115A-117A R118A			RK73GB1J103J RK73GB1J104J RK73GB1J303J RK73GB1J000J RK73GB1J223J	CHIP R 10K J 1/16W CHIP R 100K J 1/16W CHIP R 30K J 1/16W CHIP R 0 J 1/16W CHIP R 22K J 1/16W		
R119A R120A,121A R122A R123A R124A			RK73GB1J683J RK73GB1J224J RK73GB1J563J RK73GB1J104J RK73GB1J391J	CHIP R 68K J 1/16W CHIP R 220K J 1/16W CHIP R 56K J 1/16W CHIP R 100K J 1/16W CHIP R 390 J 1/16W		
R125A R126A R127A			RK73GB1J222J RK73GB1J681J RK73GB1J2R2J	CHIP R 2.2K J 1/16W CHIP R 680 J 1/16W CHIP R 2.2 J 1/16W		

L : Scandinavia K : USA P : Canada R : Mexico C : China I : Malaysia  
 Y : PX(Far East,Hawaii) T : England E : Europe G : Germany V : China(Shanghai)  
 Y : AAFES(Europe) X : Australia Q : Russia H : Korea M : Other Areas  $\Delta$  indicates safety critical components.

\* New Parts  
 Parts without **Parts No.** are not supplied.  
 Les articles non mentionnés dans le **Parts No.** ne sont pas fournis.  
 Teile ohne **Parts No.** werden nicht geliefert.

4

Ref. No	Add-ress	New Parts	Parts No.	Description	Desti-nation	Re-marks
R128A R129A R130A R131A R132A,133A			RK73GB1J331J RK73GB1J560J RK73GB1J471J RK73GB1J4R7J RK73GB1J223J	CHIP R 330 J 1/16W CHIP R 56 J 1/16W CHIP R 470 J 1/16W CHIP R 4.7 J 1/16W CHIP R 22K J 1/16W		
R135A R137A R201A R202A R204A			RK73GB1J000J RK73GB1J512J RK73GB1J223J RK73GB1J222J RK73GB1J104J	CHIP R 0 J 1/16W CHIP R 5.1K J 1/16W CHIP R 22K J 1/16W CHIP R 2.2K J 1/16W CHIP R 100K J 1/16W		
R206A R209A R212A R213A R215A,216A			RK73GB1J202J RK73GB1J104J RK73GB1J000J RK73GB1J333J RK73GB1J223J	CHIP R 2.0K J 1/16W CHIP R 100K J 1/16W CHIP R 0 J 1/16W CHIP R 33K J 1/16W CHIP R 22K J 1/16W		
R217A R218A R219A R222A R223A			RK73GB1J203J RK73GB1J133J RK73GB1J103J RK73GB1J224J RK73GB1J223J	CHIP R 20K J 1/16W CHIP R 13K J 1/16W CHIP R 10K J 1/16W CHIP R 220K J 1/16W CHIP R 22K J 1/16W		
R224A,225A R227A R228A R229A R230A			RK73GB1J224J RK73GB1J104J RK73GB1J154J RK73GB1J103J RK73GB1J183J	CHIP R 220K J 1/16W CHIP R 100K J 1/16W CHIP R 150K J 1/16W CHIP R 10K J 1/16W CHIP R 18K J 1/16W		
R231A R232A R233A R234A R235A			RK73GB1J333J RK73GB1J183J RK73GB1J224J RK73GB1J000J RK73GB1J104J	CHIP R 33K J 1/16W CHIP R 18K J 1/16W CHIP R 220K J 1/16W CHIP R 0 J 1/16W CHIP R 100K J 1/16W		
R238A R240A R290A-294A R300A R308A			RK73GB1J000J RK73GB1J102J RK73GB1J330J RK73GB1J105J RK73GB1J105J	CHIP R 0 J 1/16W CHIP R 1.0K J 1/16W CHIP R 33 J 1/16W CHIP R 1.0M J 1/16W CHIP R 1.0M J 1/16W		
R316A R317A,318A R319A,320A R321A,322A R326A,327A			RK73GB1J4R7J RK73GB1J103J RK73GB1J2R2J RK73GB1J8R2J RK73GB1J221J	CHIP R 4.7 J 1/16W CHIP R 10K J 1/16W CHIP R 2.2 J 1/16W CHIP R 8.2 J 1/16W CHIP R 220 J 1/16W		
R328A,329A R330A,331A R332A R336A,337A R338A,339A			RK73GB1J103J RK73GB1J622J RK73GB1J103J RK73GB1J223J RK73GB1J332J	CHIP R 10K J 1/16W CHIP R 6.2K J 1/16W CHIP R 10K J 1/16W CHIP R 22K J 1/16W CHIP R 3.3K J 1/16W		
R340A,341A R342A,343A R350A R351A R352A			RK73GB1J100J RK73GB1J103J RK73GB1J104J RK73GB1J334J RK73GB1J682J	CHIP R 10 J 1/16W CHIP R 10K J 1/16W CHIP R 100K J 1/16W CHIP R 330K J 1/16W CHIP R 6.8K J 1/16W		
R353A R354A R360A,361A			RK73GB1J103J RK73GB1J123J RK73GB1J8R2J	CHIP R 10K J 1/16W CHIP R 12K J 1/16W CHIP R 8.2 J 1/16W		
S1			S62-0097-08	SILDE SW. (SMT 020-21202-102)		

L : Scandinavia K : USA P : Canada R : Mexico C : China I : Malaysia  
 Y : PX(Far East,Hawaii) T : England E : Europe G : Germany V : China(Shanghai)  
 Y : AAFES(Europe) X : Australia Q : Russia H : Korea M : Other Areas  $\Delta$  indicates safety critical components.

PARTS LIST

DPC-X527-H/X527-S

# DPC-X527-H/X527-S

## PARTS LIST

5

\* New Parts  
Parts without **Parts No.** are not supplied.  
Les articles non mentionnes dans le **Parts No.** ne sont pas fournis.  
Teile ohne **Parts No.** werden nicht geliefert.

Ref. No	Add-ress	New Parts	Parts No.	Description	Desti-nation	Re-marks
S2 S3-10 S11		*	S74-0093-18 S70-0103-08 S62-0097-08	TACT SWITCH MP 020-31100-056 TACT SWITCH IC 020-31100-171 SILDE SW. SSSS 020-21202-102		
D3A D4A D200 D201A D300A		*	MA111 RB500V-40 RB063L UDZS4.7B DA204U	SW. DIODE MA11 004-80111-400 CHIP DIODE RB50004-80500-400 DIODE ZENER DIODE SW. DIODE DA204004-80204-400		
ED 1 IC1A IC2 IC100A IC101		*	B38-0263-08 MN101C439C AT24C01A AN8399SA-E1 M11S1644SA-60T	LCD DISPLAY HLC049-77541-001 IC MN101C439C (002-01439-012) IC AT24C01A-10S002-02401-451 IC(3BEAM DIGITAL SERVO HEAD AM IC(MEMORY IC) 002-11644-750		
IC102A IC201A IC202A IC300A Q100A		*	MN35530 AN41502A NJU7141F NJM2772V 2SA1576A	IC MN35530 (MAT002-35530-010) IC AN41502A (MA002-41502-010) IC NJU7141F (NJ002-07141-180) IC NJM2772V (NJ002-02772-180) CHIP TRANSISTOR003-21576-148)		
Q101A,102A Q104A Q105A Q106A Q107A		*	DTA114EUA 2SC4081 DTC114EUA 2SA1774(R) DTC124EUA	CHIP TRANSISTOR003-20114-140 CHIP TRANSISTOR003-24081-140 CHIP TRANSISTOR003-20114-145 CHIP TRANSISTOR003-20114-140 CHIP TRANSISTOR003-20124-141		
Q108A Q109A Q110A Q200A Q201A		*	DTC114EUA DTC124EUA DTA124EUA 2SD2153V 2SB1424-Q	CHIP TRANSISTOR003-20114-145 CHIP TRANSISTOR003-20124-141 CHIP TRANSISTOR CHIP TRANSISTOR003-22153-142 CHIP TRANSISTOR003-21424-147		
Q204A Q205A Q206A-208A Q209A Q210A		*	DTC114EUA 2SA1576A DTC114EUA DTA114EUA DTC124EUA	CHIP TRANSISTOR003-20114-145 CHIP TRANSISTOR003-21576-148 CHIP TRANSISTOR003-20114-145 CHIP TRANSISTOR003-20114-140 CHIP TRANSISTOR003-20124-141		
Q306A,307A Q309A,310A Q314A,315A		*	2SD1757K DTC323TU DTC323TU	CHIP TRANSISTOR003-21757-141 CHIP TRANSISTOR CHIP TRANSISTOR		

L : Scandinavia    K : USA    P : Canada    R : Mexico    C : China    I : Malaysia  
Y : P(X)Far East,Hawaii    T : England    E : Europe    G : Germany    V : China(Shanghai)  
Y : AAFES(Europe)    X : Australia    Q : Russia    H : Korea    M : Other Areas    ⚠ indicates safety critical components .

### KENWOOD CORPORATION

2967-3,Ishikawa-machi, Hachioji-shi, Tokyo, 192-8525 Japan

**KENWOOD SERVICE CORPORATION**

P.O BOX 227/45, 2201 East Dominguez St., Long Beach, CA 90801-5745, U.S.A.

**KENWOOD ELECTRONICS CANADA INC.**

6070 Kesirel Road, Mississauga, Ontario, Canada L5T 1S8

**KENWOOD ELECTRONICS LATIN AMERICA S.A.**

P.O.BOX552791, Piso6plaza Chase, Cl.47 yAquinno de la Guardia Panama, Republic de Panama

**KENWOOD ELECTRONICS BRASIL LTDA.**

Alameda Ministro Rocha Azevedo No. 456, Edificio Jau, 100 Andar, Cargueira Cesar, Cep 0140-001, Sao Paulo-SP-Brasil

**KENWOOD ELECTRONICS U.K. LIMITED**

KENWOOD House, Dwight Road, Watford, Herts, WD18 9EB, United Kingdom

**KENWOOD ELECTRONICS BELGIUM N.V.**

Leuvensesteenweg 248 J, 1800 Vilvoorde, Belgium

**KENWOOD ELECTRONICS DEUTSCHLAND GMBH**

Rembrücker Str. 15, 63150 Heusenstamm, Germany

**KENWOOD ELECTRONICS FRANCE S.A.**

13 Boulevard Ney, 75018 Paris, France

**KENWOOD ELECTRONICS ITALIA S.p.A.**

Via G. Sirtori, 7/9 20129, Milano, Italy

**KENWOOD IBERICA S.A.**

Bolivia, 239-08020 Barcelona, Spain

**KENWOOD ELECTRONICS AUSTRALIA PTY. LTD.**

(A.C.N. 001 499 074)

16 Giffnock Avenue, North Ryde, N.S.W. 2113, Australia

**KENWOOD ELECTRONICS (HONG KONG) LTD.**

Unit 3712-3724, Level 37, Tower 1, Metroplaza, 223 Hing Fong Road, Kwai Fong NT., Hong Kong

**KENWOOD ELECTRONICS GULF FZE**

P.O.Box 61318, Jebel Ali, Dubai, U.A.E.

**KENWOOD ELECTRONICS SINGAPORE PTE LTD.**

No. 1 Genting Lane #02-02, KENWOOD Building, Singapore, 349544

**KENWOOD ELECTRONICS (MALAYSIA) SDN BHD.**

#4,01 Level 4, Wisma Academy Lot 4A, Jalan 191 46300 Petaling Jaya Selangor Darul Ehsan Malaysia

**KENWOOD ELECTRONICS (THAILAND) CO., LTD.**

2019 New Peachuri Road, Bangkok, Huaykwang, Bangkok, 10320 Thailand