

SPECIFICATIONS

POWER AMPLIFIER SECTION

Power Output:	35 watts per channel minimum, RMS at 8 ohms from 20 Hz to 20,000 Hz with no more than 0.8% total harmonic distortion
Both Channel Driven:	38 watts per channel into 8 ohms at 1,000 Hz 40 watts per channel into 4 ohms at 1,000 Hz
Dynamic Power Output:	0.8% at rated power into 8 ohms 0.08% at 1/2 rated power into 8 ohms at 1,000 Hz
Total Harmonic Distortion:	0.5% at rated power into 8 ohms 0.1% at 1/2 rated power into 8 ohms
Intermodulation Distortion:	10 Hz - 40,000 Hz
Power Bandwidth:	30 at 8 ohms
Damping Factor:	Accept 4 ohms to 16 ohms
Speaker Impedance:	

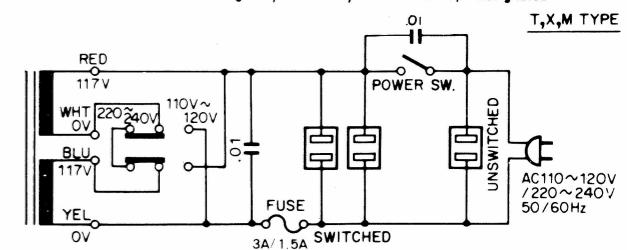
PREAMPLIFIER SECTION

Input Sensitivity, Impedance and S/N		
Phono:	2.5mV	50 kohms 70 dB
Tuner:	150mV	50 kohms 90 dB
Aux:	150mV	50 kohms 90 dB
Tape Play:	150mV	50 kohms 90 dB
Output Voltage:	150 mV	
Tape Rec (pin):	150 mV	
Frequency Response:	20 Hz - 20,000 Hz ±2 dB	
Tone Controls:		
Bass:	+8 dB at 100 Hz	
Treble:	+8 dB at 10 kHz	
Loudness (-30 dB):	+6 dB at 100 Hz	+4 dB at 10 kHz

GENERAL

AC Outlet:	Switched 2, Unswitched 1
Power Consumption:	240 watts at full power
Dimensions:	W 14-15/16" (380mm) X H 5-1/2" (140mm) X D 10-1/32" (255mm)
Weight (Net):	16.5 lbs. (7.5 kg)

For the sets sold in England, Australia, and areas except designated.



For the sets sold in Europe except England.

