

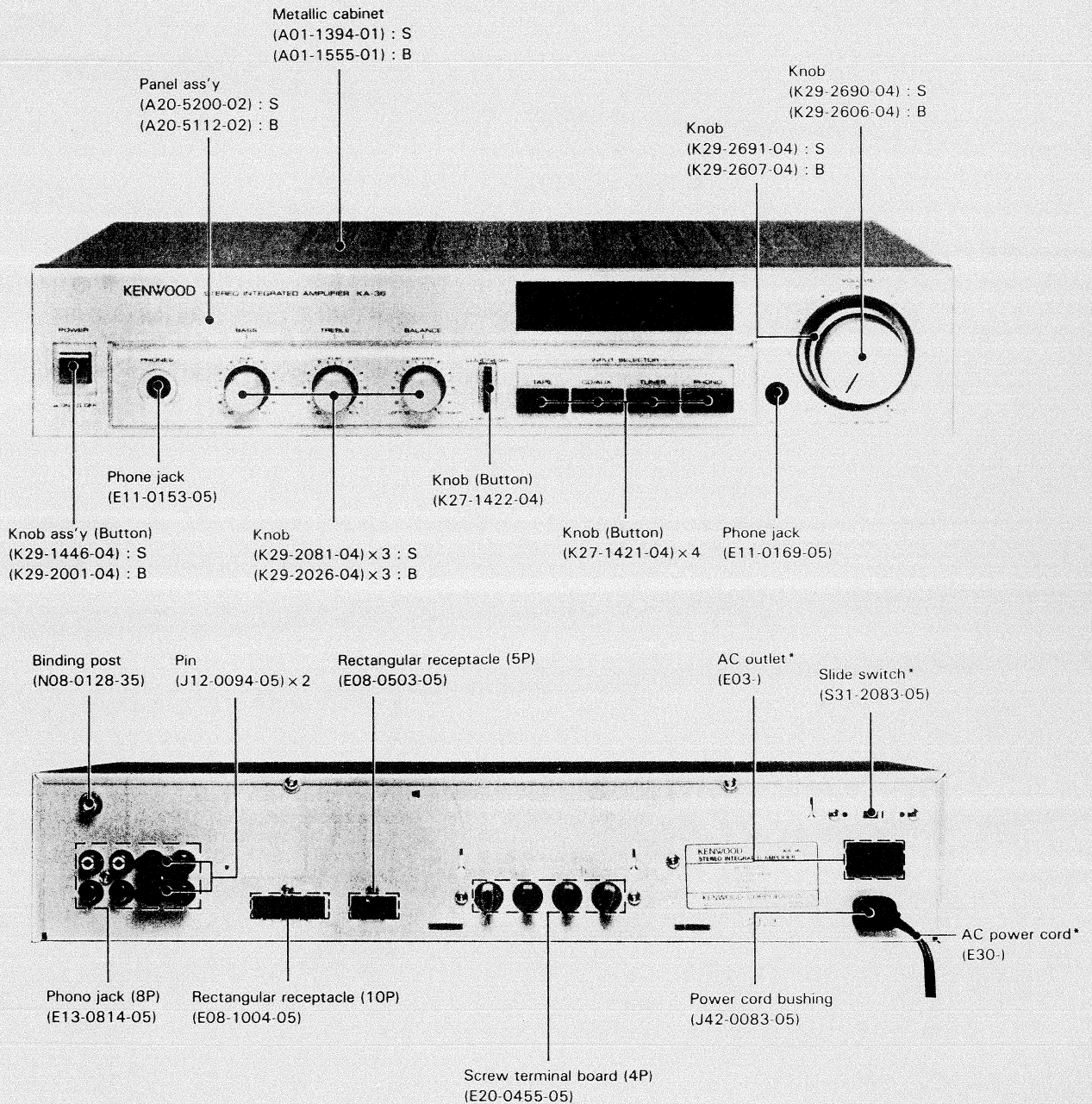
STEREO INTEGRATED AMPLIFIER

# KA-36

## SERVICE MANUAL

# KENWOOD

©1987-3 PRINTED IN JAPAN  
B51-3199-00(T)1472



**Note:** When doing service of KT-36, KT-36L, or KX-36W be sure to have the customer bring the KA-36 or use the DC power supply.

\* Refer to parts list on page 14.  
Photo is KA-36 (Silver).  
S: Silver, B: Black.

## CONTENTS

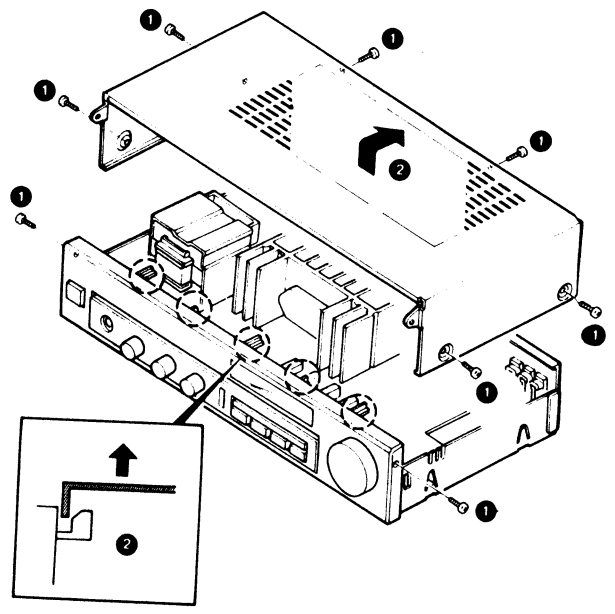
DISASSEMBLY FOR REPAIR.....	2	SCHEMATIC DIAGRAM.....	11
BLOCK & LEVEL DIAGRAM.....	4	EXPLODED VIEW.....	13
CIRCUIT DESCRIPTION.....	4	PARTS LIST.....	14
P.C. BOARD.....	5	SPECIFICATIONS.....	Back cover

## DISASSEMBLY FOR REPAIR

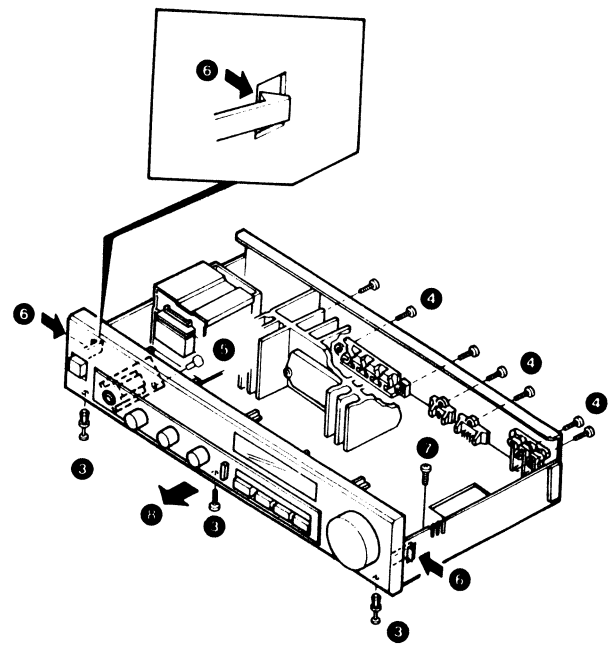
### DISASSEMBLY FOR REPAIR

1. Remove 8 screws from the metallic cabinet and lift the metallic cabinet up and slide it rearward (1, 2).

**Note:** Be aware that the metallic cabinet is hooked to the projections on the panel.

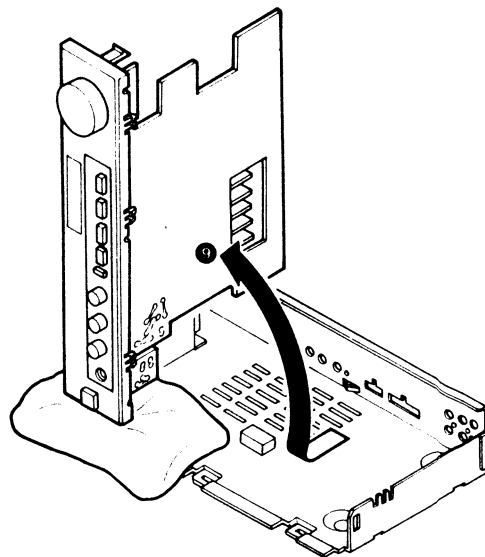


2. Remove 1 screw and two push rivets at the bottom of the panel (3) and 7 screws at the rear panel (4).
3. Remove 1 screw retaining the phone jack pcb (5).
4. Push the pawls at both sides of the panel and release from the hole (6).
5. Remove 1 screw at the pcb (7).
6. The panel with pc boards attached, can be pulled forward (8).

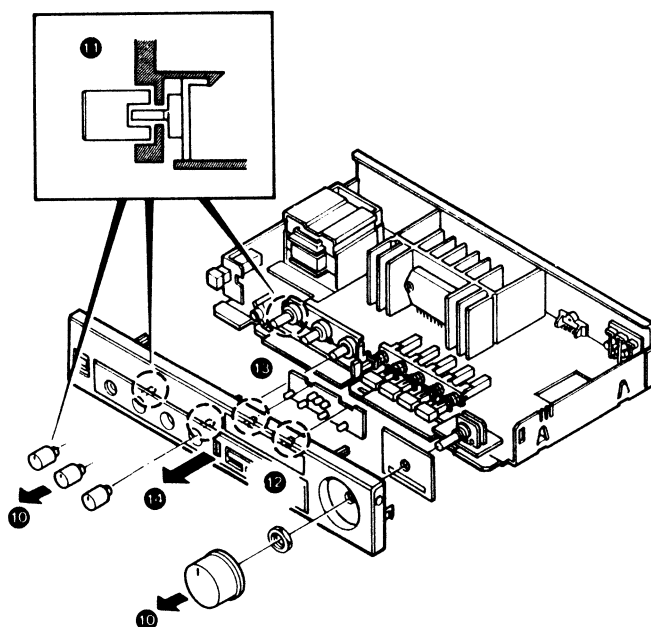


## DISASSEMBLY FOR REPAIR

6. Place a cloth, or something equivalent to avoid damages to the side of the panel.
7. Turn the panel to the upright position and place the pc board on the rear panel as shown (9).

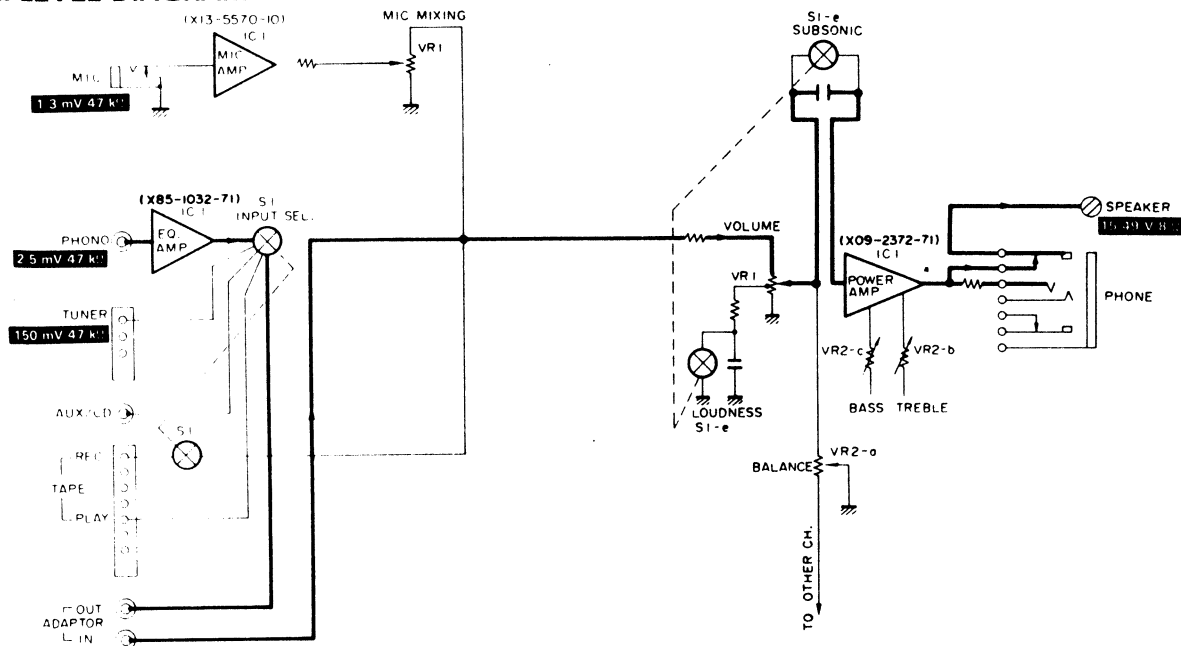


8. Pull off BASS, TREBLE, BALANCE and VOLUME knobs (10).
9. Release the hook on the rear side of the panel from the potentiometer mounting hardware (11).
10. Remove the hexagonal nut from the VOLUME potentiometer (12) and release the hook from the LED pc board (13).
11. Pull the panel forward (14).



## BLOCK & LEVEL DIAGRAM/CIRCUIT DESCRIPTION

### BLOCK & LEVEL DIAGRAM



### DESCRIPTION OF COMPONENTS

#### Audio unit (X09-2372-71)

Component	Application/function	Operation/condition/compatibility
IC1	Power amplifier	
Q1	AVR	Compatible with 2SC2167 or 2SD330 (Required insulation plate and insulating bushing when attaching).
Q2	Discharge EQ power supply when power OFF	Compatible with 2SC2320 (E, F).
Q3	Muting when power ON/OFF	
D1-4, 6	Various kinds display	
D8-11	Rectifier	
D12	Rectifier for external power supply	
D16	Rectifier for LEDs	Compatible with DSM1A1 or W06B.
D17-19	Muting control when power ON/OFF	
D20	AVR for external power supply	Compatible with RD16E (B2), RD16J (B2), RD16JS (B2).
D21, 22	EQ and MIC AVR	Compatible with RD15E (B), RD15J (B), RD15JS (B).
D23	Muting control when power ON/OFF	Compatible with 1S2076A.

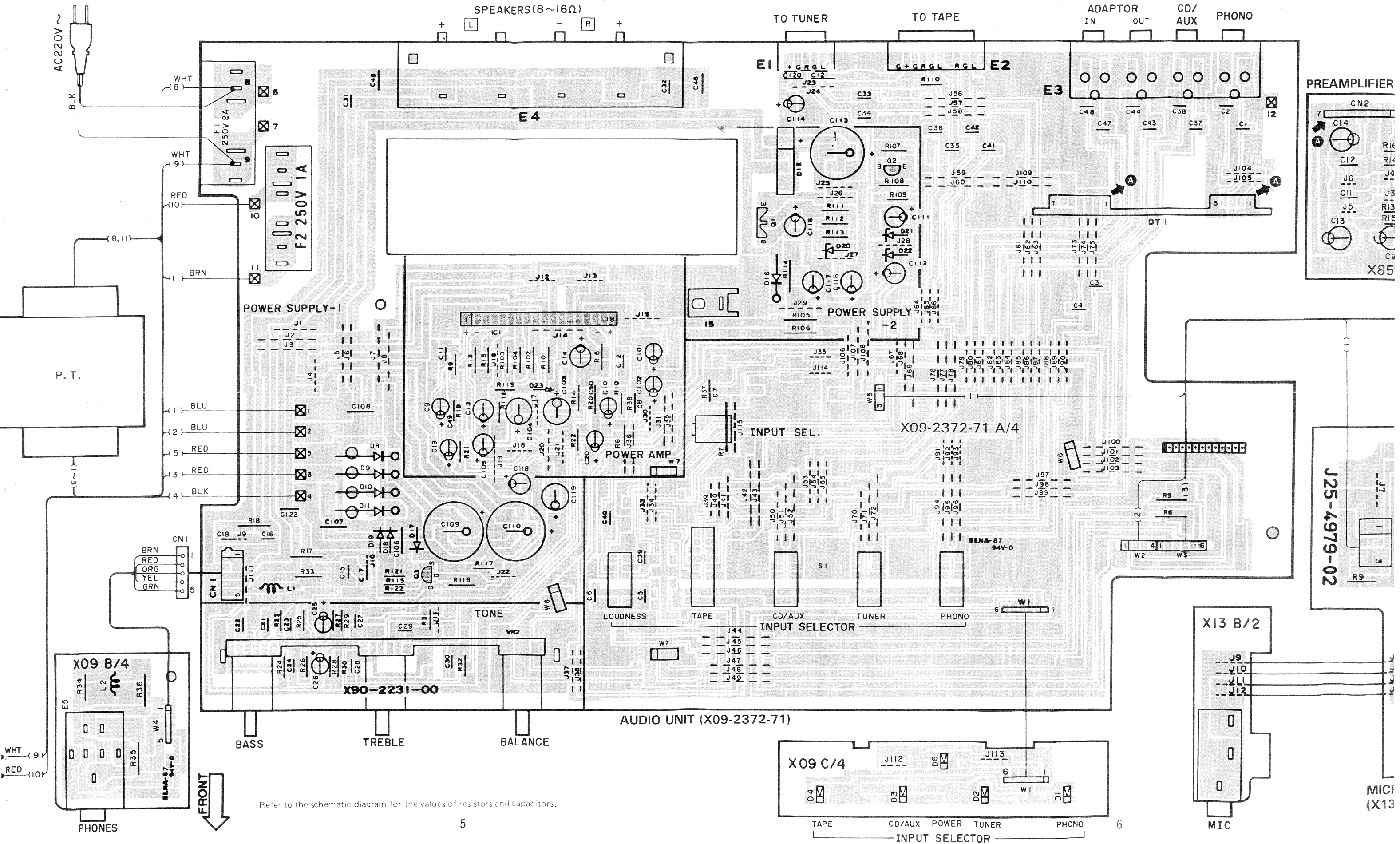
#### EQ amp unit (X85-1032-71)

Component	Application/function	Operation/condition/compatibility
IC1	EQ amplifier	For Phono.

#### Mic amp unit (X13-5570-10)

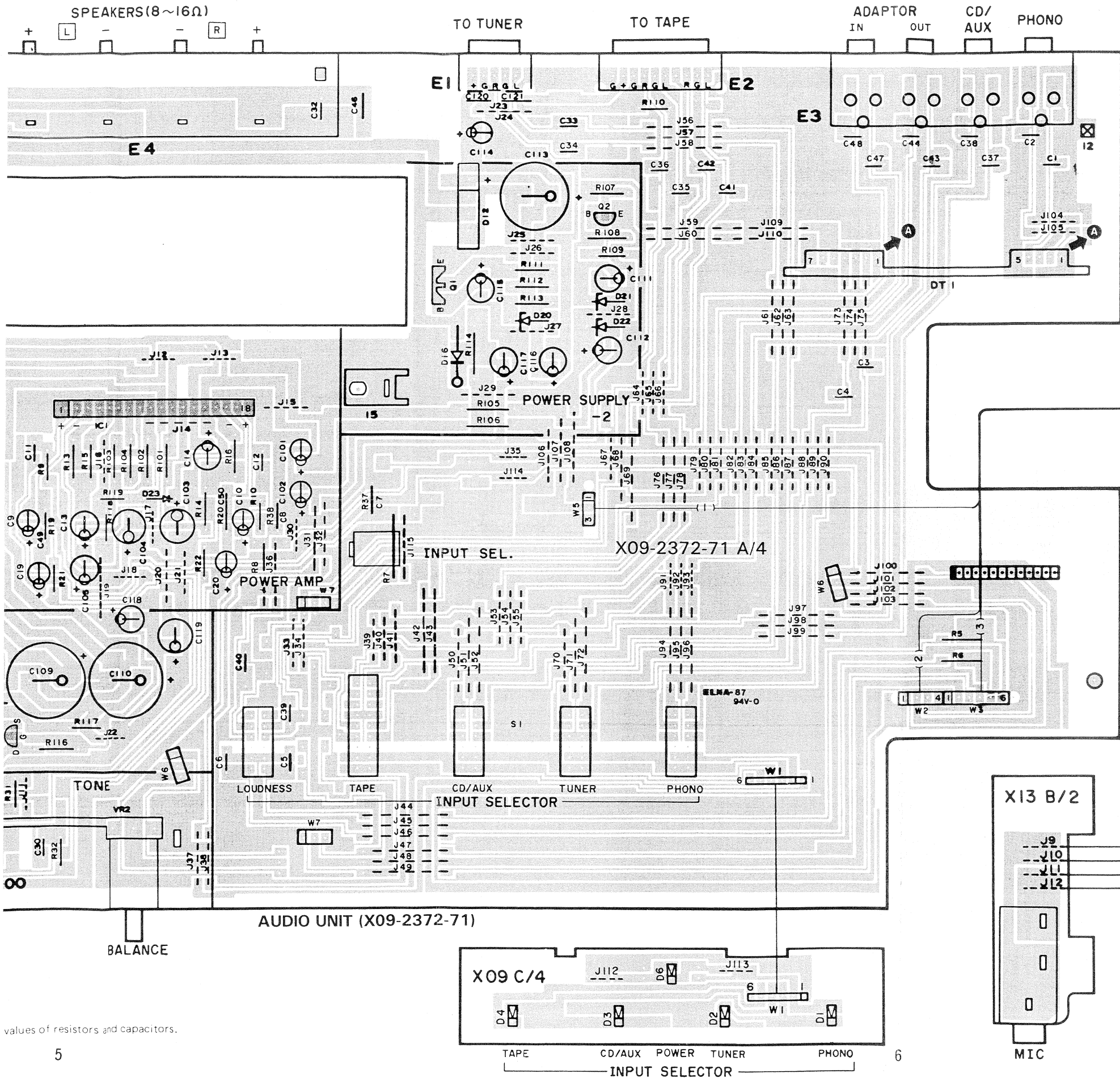
Component	Application/function	Operation/condition/compatibility
IC1	MIC amplifier	For Microphone.

# P.C. BOARD (Component side view)

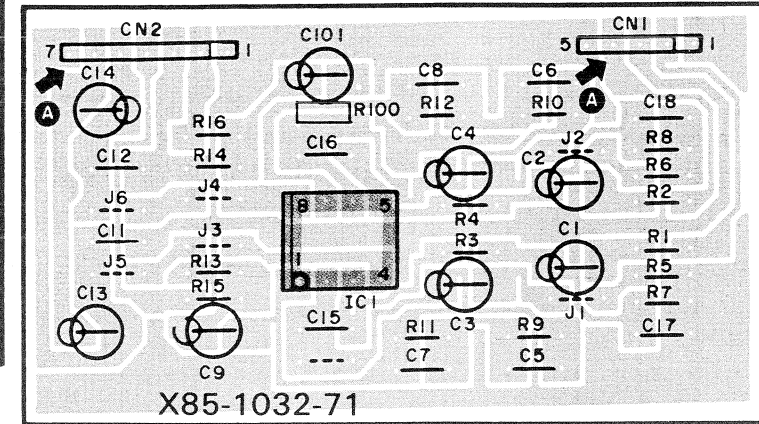


Refer to the schematic diagram for the values of resistors and capacitors.

# P.C. BOARD (Component side view)



PREAMPLIFIER UNIT (X85-1032-71)



X09-2372-71

IC1
11 38V
14 -36V

Q1
E 16V
C -
B 16.5V

Q2
E 0V
C 14V
B -

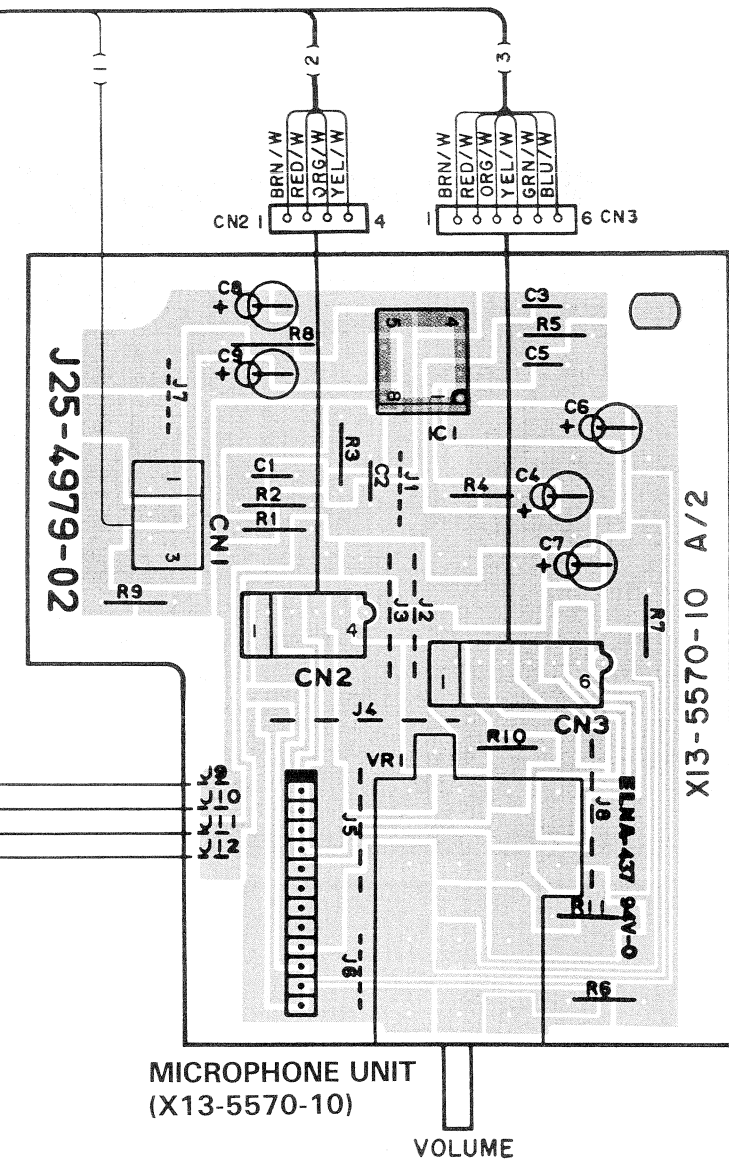
Q3
G -22V
S 0V
D 4.8V

X85-1032-71

IC1
4 -14V
8 14V

X13-5570-10

IC1
1 0V
2 0V
3 0V
4 -14V



MICROPHONE UNIT (X13-5570-10)

values of resistors and capacitors.

# P.C. BOARD (Foil side view)

X09-2372-71

IC1

11	38V
14	-36V

Q1

E	16V
C	-
B	16.5V

Q2

E	0V
C	14V
B	-

Q3

G	-22V
S	0V
D	4.8V

X85-1032-71

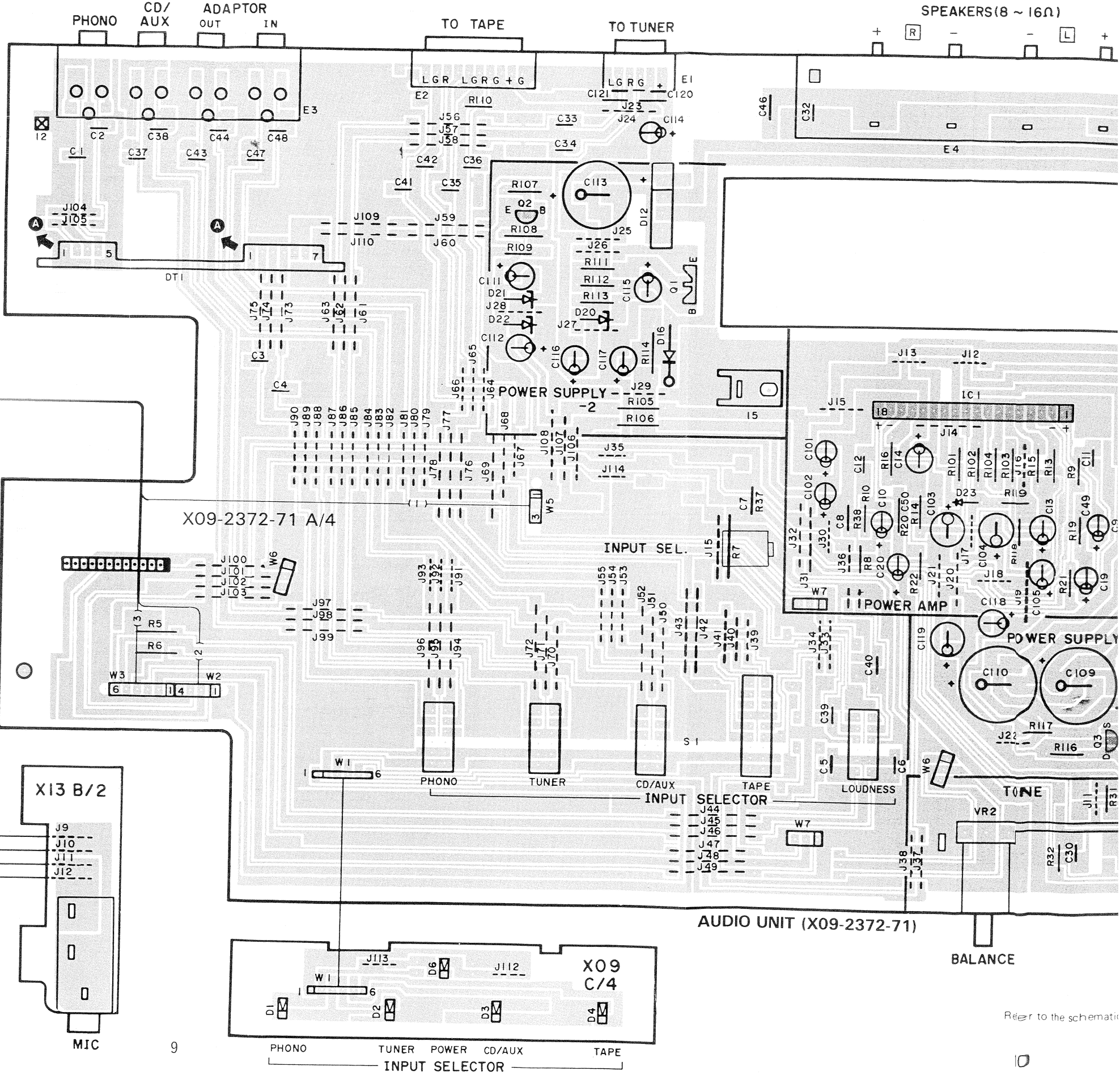
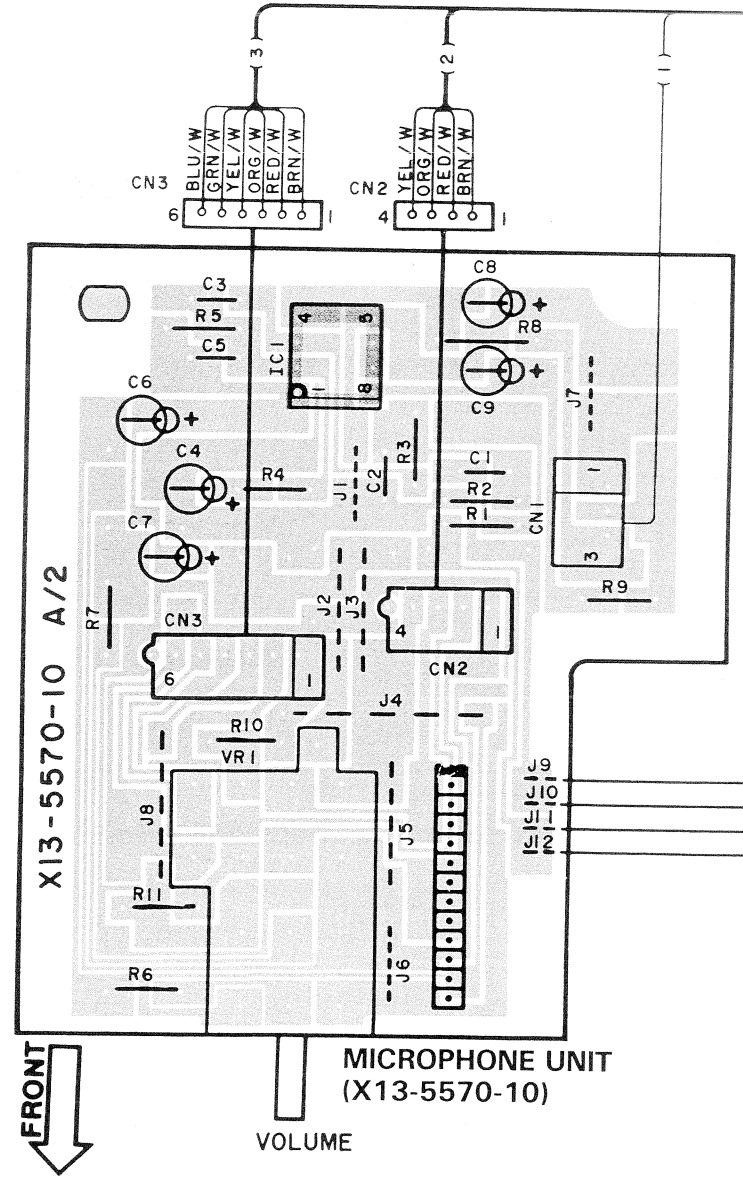
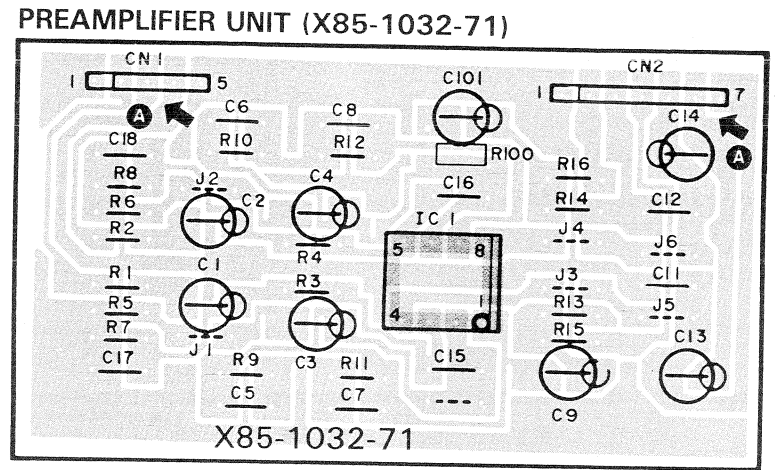
IC1

4	-14V
8	14V

X13-5570-10

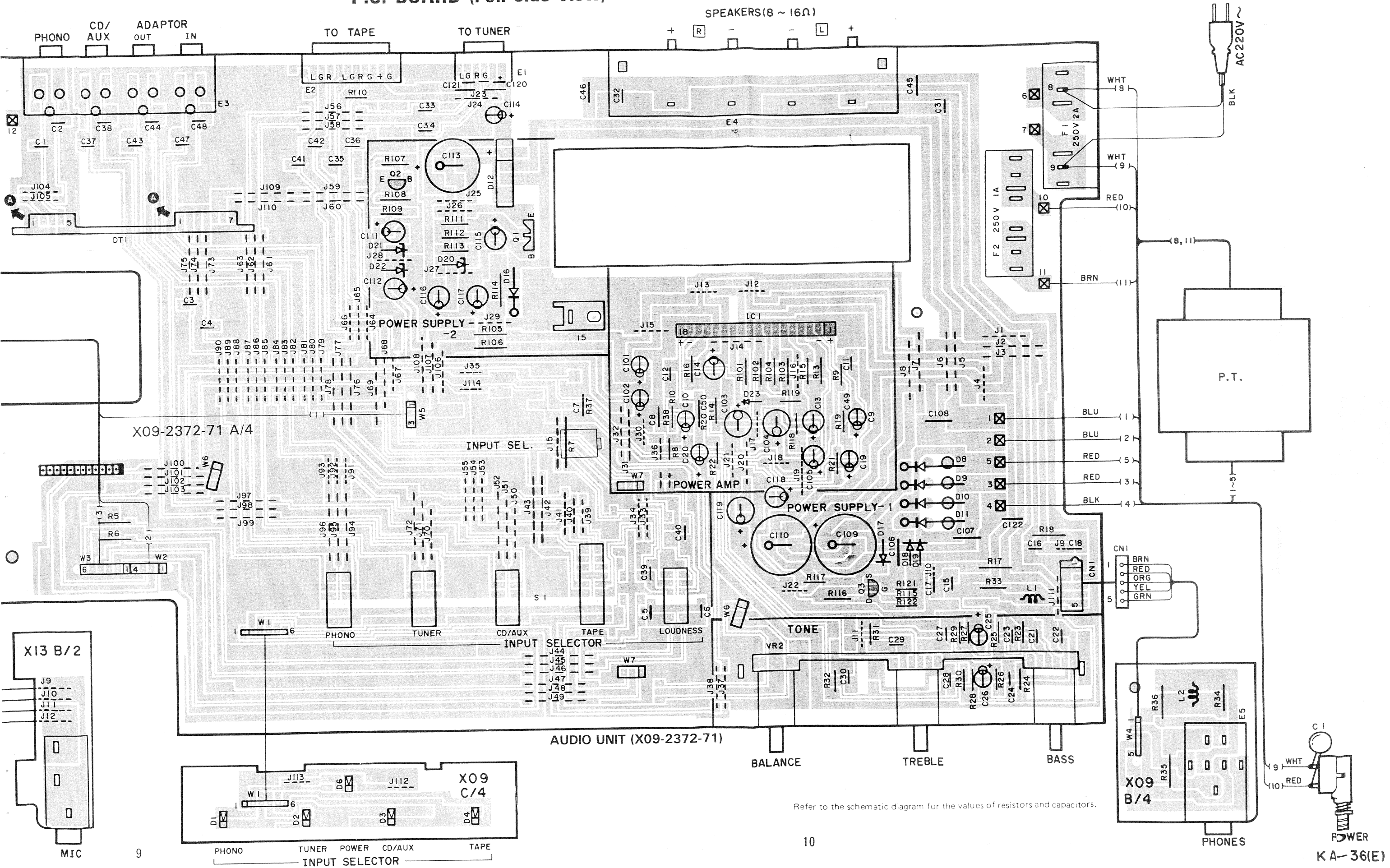
IC1

1	0V
2	0V
3	0V
4	-14V



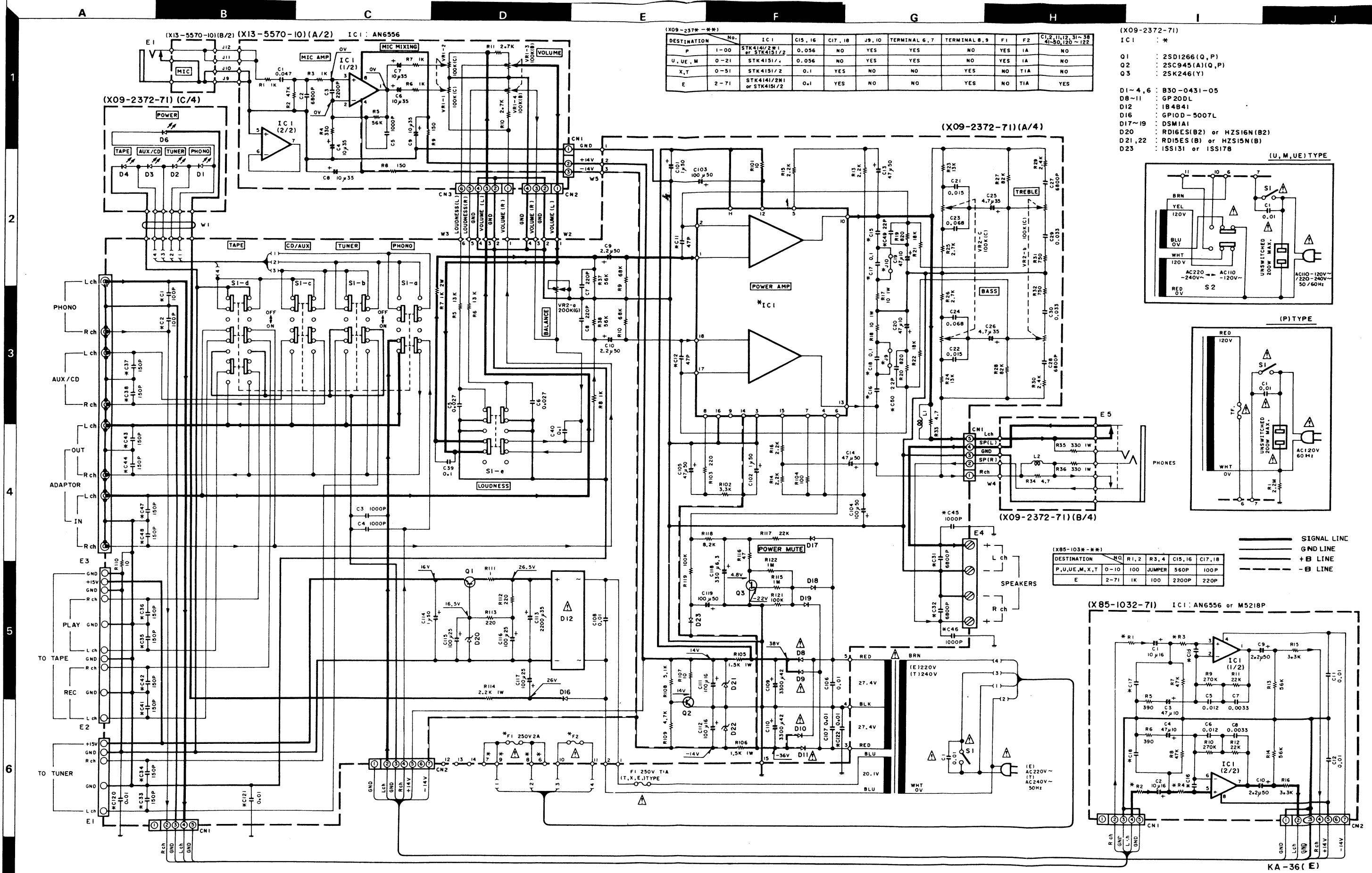
Refer to the schematic

# P.C. BOARD (Foil side view)



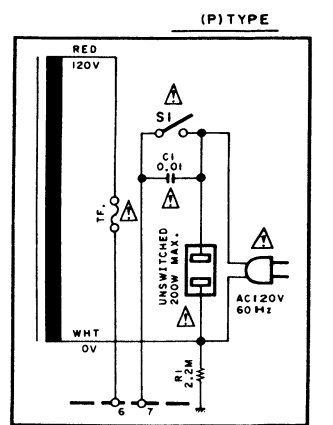
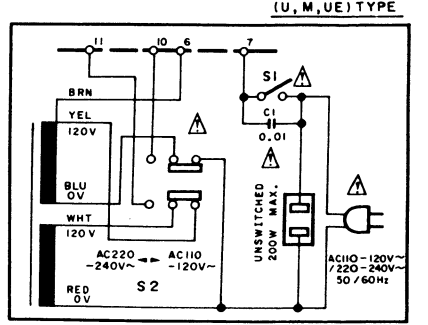
Refer to the schematic diagram for the values of resistors and capacitors.





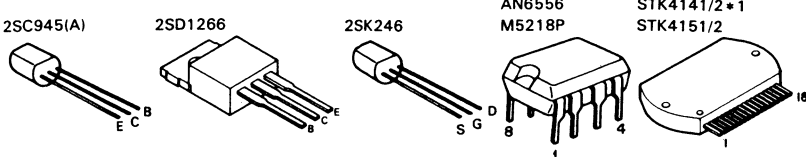
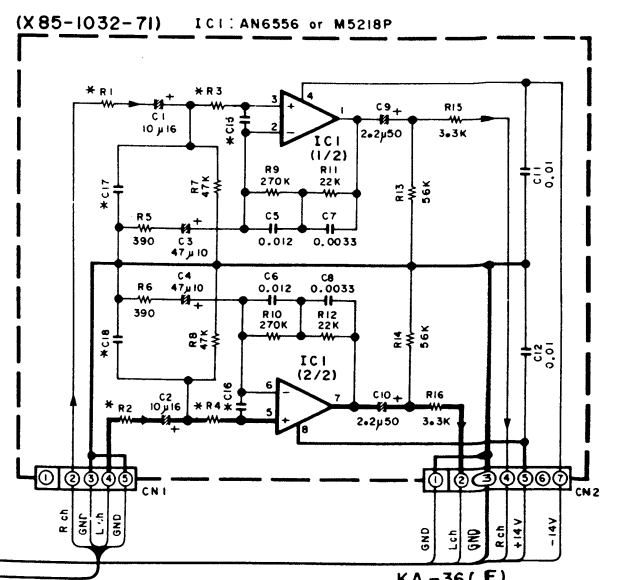
DESTINATION	No.	IC 1	C15, 16	C17, 18	J9, 10	TERMINAL 6, 7	TERMINAL 8, 9	F1	F2	C1, 2, 11, 12, 31-38
P	1-00	STK4141/2*1 or STK4151/2	0.056	NO	YES	YES	NO	YES	1A	NO
U, UE, M	0-21	STK4151/2	0.056	NO	YES	YES	NO	YES	1A	NO
X, T	0-51	STK4151/2	0.1	NO	NO	NO	YES	NO	T1A	NO
E	2-71	STK4141/2*1 or STK4151/2	0.1	YES	NO	NO	YES	NO	T1A	YES

- (X09-2372-71)  
IC 1 : \*
- Q1 : 2SD1266 (Q, P)
  - Q2 : 2SC945(A) (Q, P)
  - Q3 : 2SK246 (Y)
- D1~4, 6 : B30-0431-05  
D8~11 : GP 200L  
D12 : 1B4B41  
D16 : 6P10D-5007L  
D17~19 : DSM1A1  
D20 : RD16S(B2) or HZS16N(B2)  
D21, 22 : RD15S(B) or HZS15N(B)  
D23 : ISS131 or ISS178



DESTINATION	No.	R1, 2	R3, 4	C15, 16	C17, 18
P, U, UE, M, X, T	0-10	100	JUMPER	560P	100P
E	2-71	1K	100	2200P	220P

— SIGNAL LINE  
— GND LINE  
— +B LINE  
— -B LINE



Die angegebenen Gleichspannungswerte wurden mit einem hochohmigen Spannungsmesser gemessen. Dabei schwanken die Meßwerte aufgrund von Unterschieden zwischen einzelnen Instrumenten oder Geräten u.U. geringfügig.

DC voltages are as measured with a high impedance voltmeter. Values may vary slightly due to variations between individual instruments or/and units.

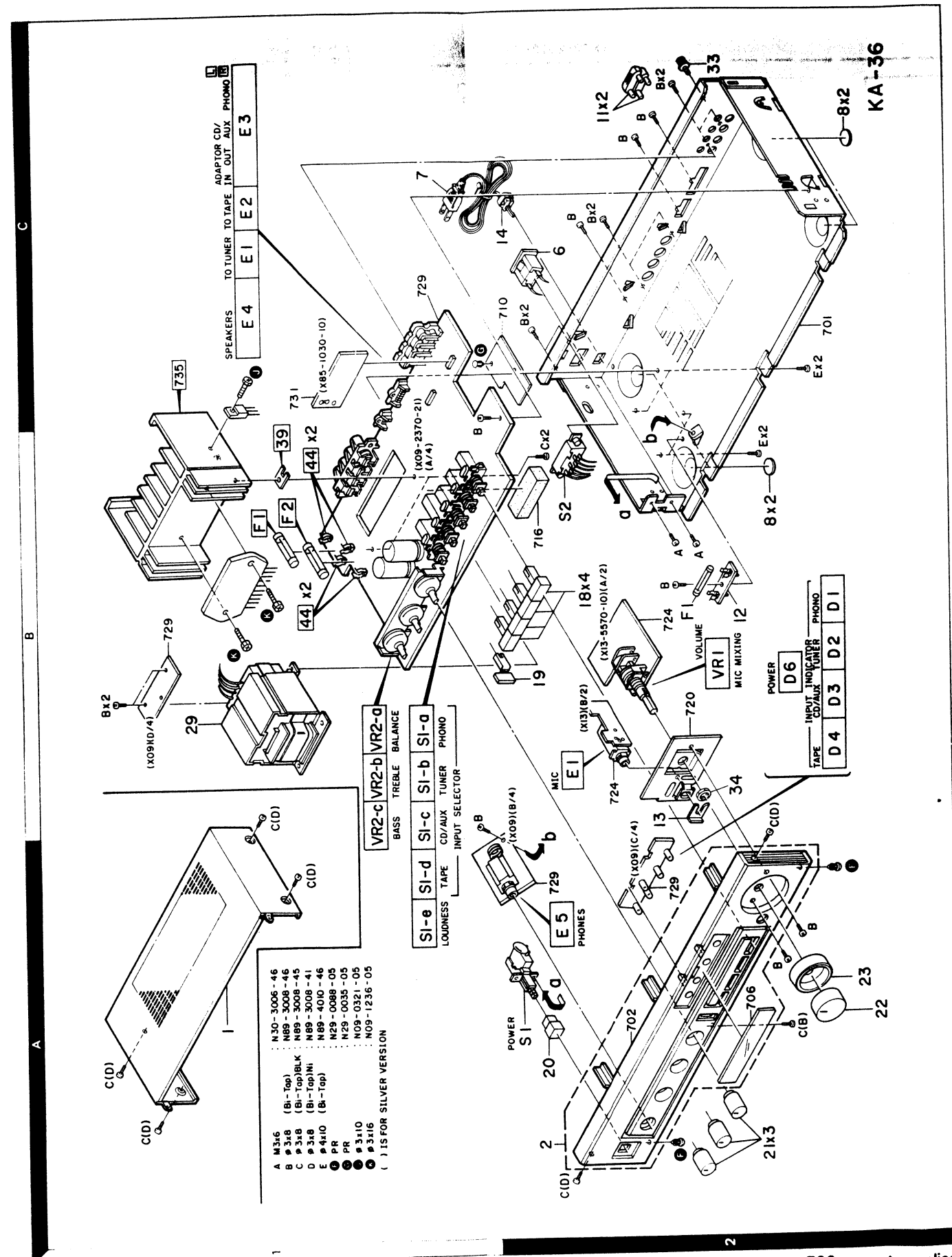
Les tensions c.c. doivent être mesurées avec un voltmètre à haute impédance. Les valeurs peuvent différer légèrement du fait des variations inhérentes aux appareils et aux instruments de mesure individuels.

**CAUTION:** For continued safety, replace safety critical components only with manufacturer's recommended parts (refer to parts list). Indicates safety critical components. To reduce the risk of electric shock, leakage-current or resistance measurements shall be carried out (exposed parts are acceptably insulated from the supply circuit) before the appliance is returned to the customer.



# KA-36 KA-36

## EXPLODED VIEW



## PARTS LIST

\* New Parts  
 Parts without Parts No. are not supplied.  
 Les articles non mentionnés dans le Parts No. ne sont pas fournis.  
 Teile ohne Parts No. werden nicht geliefert.

Ref. No.	Address	New Parts	Parts No.	Description	Destination	Remarks
参照番号	位置	新	部品番号	部品名 / 規格	仕向	備考
<b>KA-36</b>						
1	1A		A01-1394-01	METALLIC CABINET	M	S
1	1A	*	A01-1555-01	METALLIC CABINET	PUJEMX	
1	1A	*	A01-1555-01	METALLIC CABINET	TE	
2	2A	*	A20-5112-02	PANEL ASSY	PUJEMX	
2	2A	*	A20-5112-02	PANEL ASSY	TE	
2	2A	*	A20-5200-02	PANEL ASSY	M	S
-	-		B46-0094-03	WARRANTY CARD	UUE	
-	-		B46-0095-03	WARRANTY CARD	UUE	
-	-		B46-0096-13	WARRANTY CARD	X	
-	-		B46-0121-03	WARRANTY CARD	P	
-	-		B46-0122-13	WARRANTY CARD	E	
-	-		B46-0143-03	WARRANTY CARD	T	
-	-	*	B50-6665-00	INSTRUCTION MANUAL (ENGLISH)	PMXEM	
-	-	*	B50-6666-00	INSTRUCTION MANUAL (FRENCH)	M	
-	-	*	B50-6667-00	INSTRUCTION MANUAL (SPANISH)	M	
-	-	*	B50-6668-00	INSTRUCTION MANUAL (ARABIC)	M	
-	-	*	B50-6670-00	INSTRUCTION MANUAL (G.D.I.S)	E	
-	-		B58-0223-04	CAUTION CARD (PRE-SET 120V)	U	
-	-		B58-0513-04	CAUTION CARD (PRESET220-240)	UE	
-	-		B59-0092-00	SERVICE DIRECTORY	UUE	
Δ	C1		C91-0023-05	CERAMIC 0.01UF AC250V	UJEM	
Δ	C1		C91-0647-05	CERAMIC 0.01UF P	PXTE	
Δ	6		E03-0036-05	AC OUTLET	UJEM	
Δ	6		E03-0041-05	AC OUTLET	P	
Δ	7		E30-0459-05	AC POWER CORD	E	
Δ	7		E30-0812-05	AC POWER CORD	UJEM	
Δ	7		E30-0974-05	AC POWER CORD	P	
Δ	7		E30-1341-05	AC POWER CORD	X	
Δ	7		E30-1416-05	AC POWER CORD	T	
Δ	F1		F06-1022-05	FUSE (SEMKO) (250V T1A)	XE	
Δ	8		G10-0086-04	NON-WOVEN FABRIC (FOOT)		
-	-	*	H01-7486-04	ITEM CARTON CASE	PUJEMX	
-	-	*	H01-7486-04	ITEM CARTON CASE	TE	
-	-	*	H01-7488-04	ITEM CARTON CASE	M	
-	-		H10-3315-02	POLYSTYRENE FOAMED FIXTURE		
-	-		H10-3316-02	POLYSTYRENE FOAMED FIXTURE		
-	-		H12-1136-04	CARTON BOARD		
-	-		H25-0223-04	PROTECTION BAG (750X350XD.03)		
-	-		H25-0232-04	PROTECTION BAG (235X350XD.03)		
Δ	11		J12-0094-05	PIN		
Δ	12		J13-0053-05	FUSE HOLDER	XE	
Δ	13		J21-3326-05	JACK MOUNTING HARDWARE		
Δ	14		J42-0083-05	POWER CORD BUSHING		
18	2B		K27-1421-04	KNØB (BUTTON) INPUT SELECTOR		
19	2B		K27-1422-04	KNØB (BUTTON) LOUDNESS		
20	2A		K29-1446-04	KNØB ASSY (BUTTON) POWER	M	
20	2A		K29-2001-04	KNØB ASSY (BUTTON) POWER	PUJEMX	
20	2A		K29-2001-04	KNØB ASSY (BUTTON) POWER	TE	S
21	2A		K29-2026-04	KNØB (BASS, TREBLE, BALANCE)	PUJEMX	

E: Scandinavia & Europe K: USA P: Canada  
 U: PX (Far East, Hawaii) T: England M: Other Areas  
 UE: AAFES (Europe) X: Australia

S: Silver version only.  
 Δ indicates safety critical components.