

SERV. 32 649

STEREO INTEGRATED AMPLIFIER

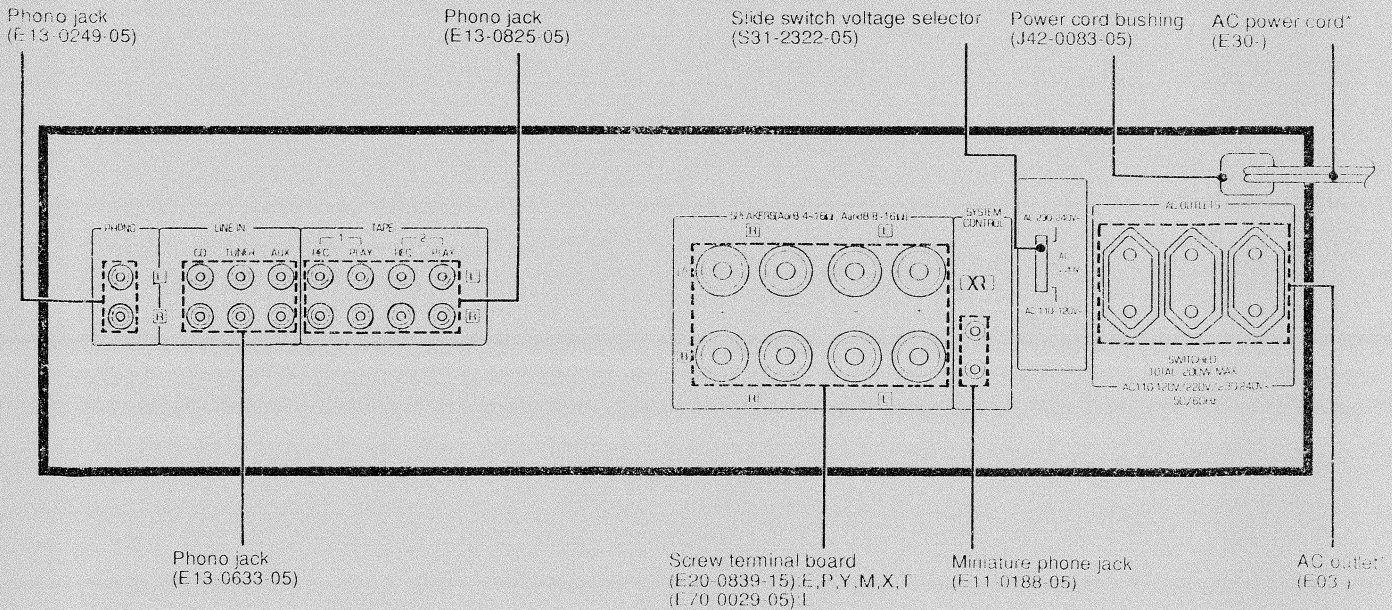
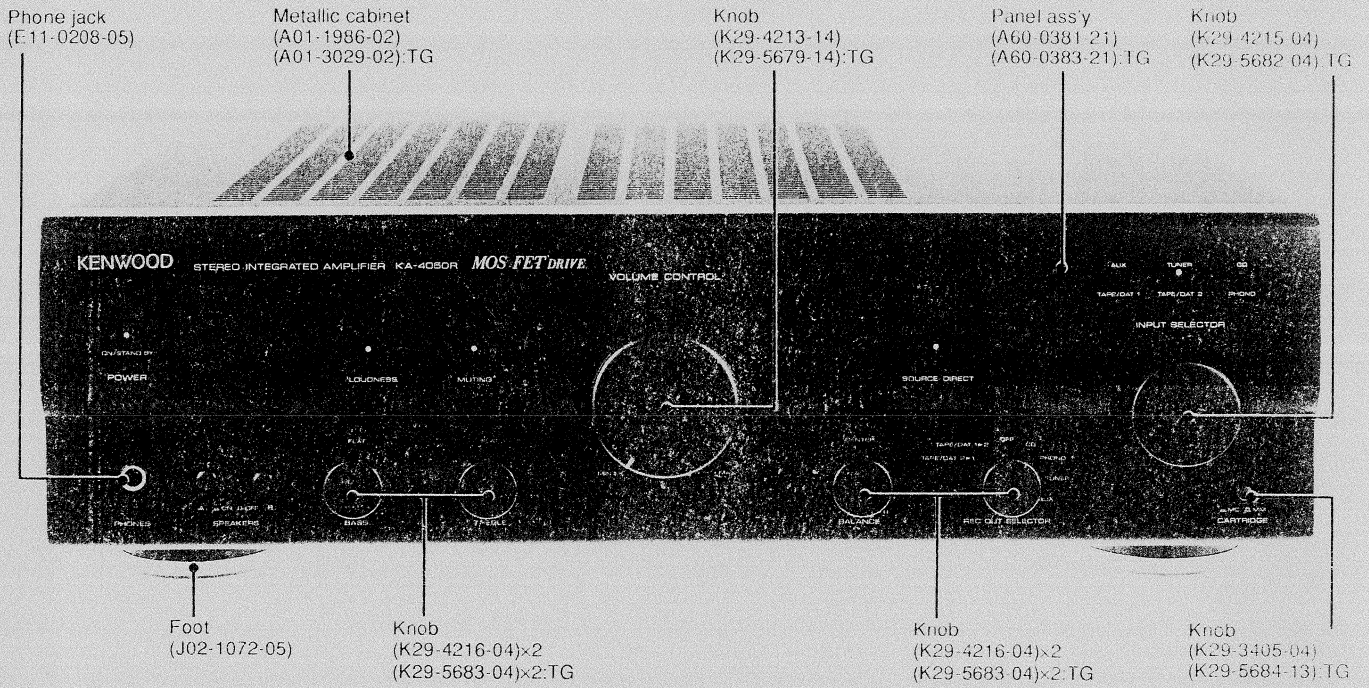
KA-4050R

SERVICE MANUAL

KENWOOD

1728

© 1993-3 PRINTED IN JAPAN
B51-4707-00 (S) 2669



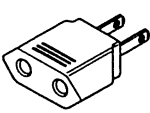
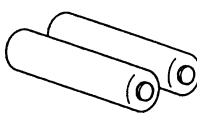
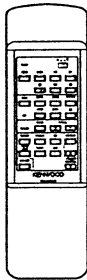
CONTENTS

ACCESSORIES.....	2	SCHEMATIC DIAGRAM	11
REMOTE CONTROL OPERATION.....	3	EXPLODED VIEW.....	19
ADJUSTMENT/REGLAGES/ABGLEICH.....	4	PARTS LIST.....	21
WIRING DIAGRAM.....	5	SPECIFICATIONS	29
PC BOARD	7		

ACCESSORIES

Accessories

- Remote control unit 1
(A70-0932-05)
(A09-0146-08): Battery cover
- Batteries (R6/SUM-3/AA)
..... 2
- AC plug adaptor..... 1
(Except for some areas)
For the unit with a Euro-
pean AC plug in areas
other than Europe.
(E03-0115-05)



INSTRUCTION MANUAL

B60-1136-00	ENGLISH	
B60-1137-00	FRENCH	E, L, P
B60-1138-00	GE, DU, IT	E, L
B60-1139-00	CHINESE	M
B60-1140-00	SPANISH	E, M

REMOTE CONTROL OPERATION

ADJUSTMENT/REGLAGE/ABGLEICH

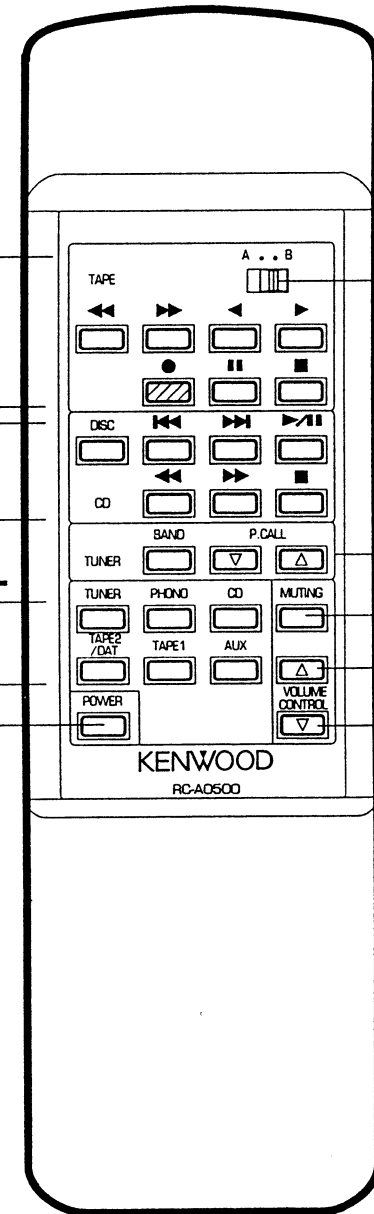
Operation keys for KENWOOD components connected by system control cords

Cassette deck operation keys
These keys perform the same operations as the corresponding keys on the cassette deck. However, operations requiring simultaneous pressing of two keys are not possible.

CD player operation keys
* The DISC key is only used for the Autochanger CD player.

INPUT SELECTOR keys

POWER key



TAPE A/B selector
A: When operating Deck A of a double cassette deck, set this selector to the A position.
B: When operating Deck B of a double cassette deck or single cassette deck, set this selector to the B position.

TUNER operation keys

MUTING key

VOLUME UP (Δ), DOWN (▽) keys

KA4050R operation keys
These keys have the same function as the corresponding keys on the main unit.

A70-0932-05
A09-0146-08: Battery cover

ADJUSTMENT

No.	ITEM	INPUT SETTINGS	OUTPUT SETTINGS	AMPLIFIER SETTINGS	ALIGNMENT POINTS	ALIGN FOR	FIG.
Unless otherwise specified, set the respective switches as follows: POWER: ON SPEAKER: B REC OUT: OFF SELECTOR: PHONO							
1	IDLE CURRENT	—	Connect a DC voltmeter across CN27 CN28	VOLUME: 0	VR1, 3(L) VR2, 4(R)	6 mV (30 mA)	(a)

REGLAGES

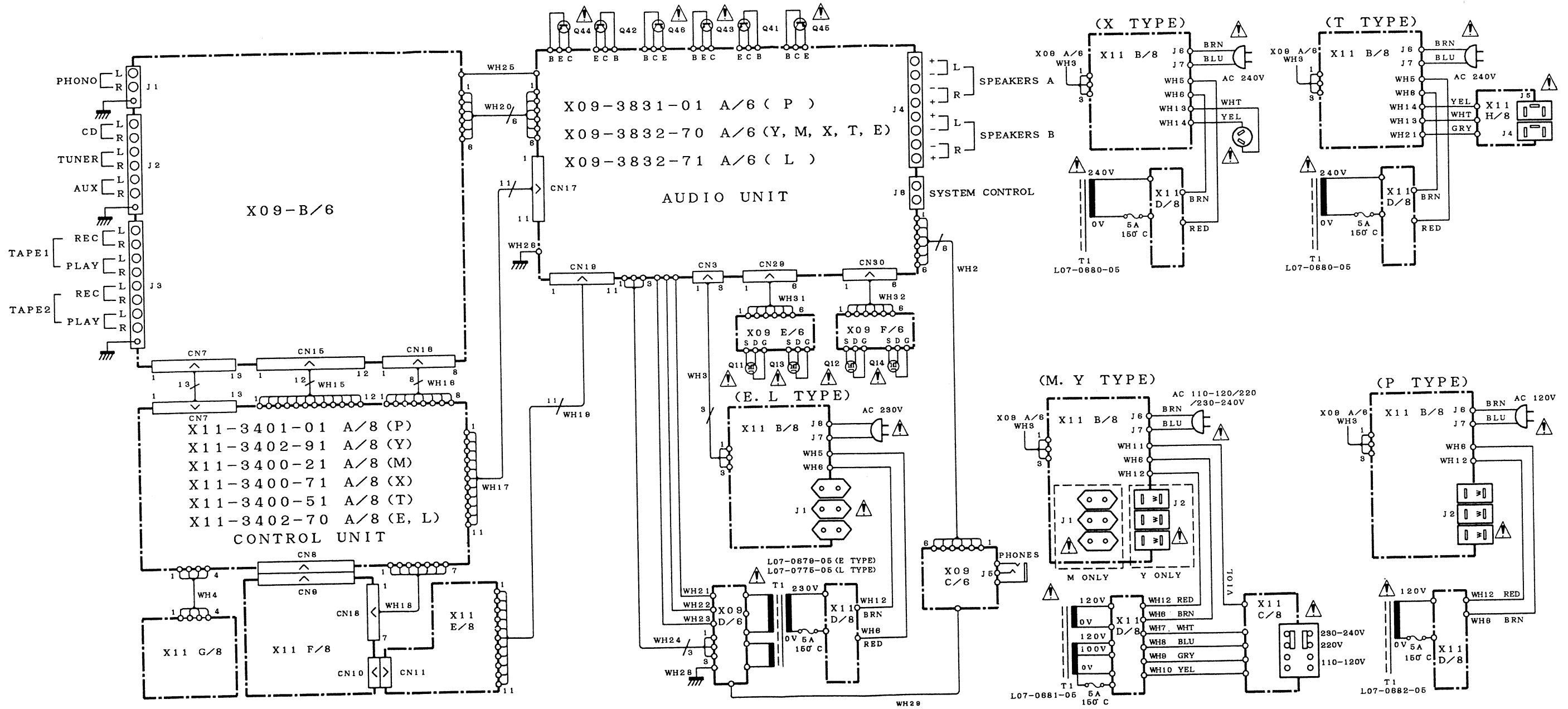
N°	ITEM	REGLAGE DE L'ENTREE	REGLAGE DE LA SORTIE	REGLAGE DE L'AMPLIFICATEUR	POINT DE L'ALIGNEMENT	ALIGNER POUR	FIG.
Sauf indication contraire, régler comme suit les commandes respectives POWER: ON SPEAKER: B REC OUT: OFF SELECTOR: PHONO							
1	COURANT DE PLARISATION	—	Connecter un voltmètre de CC SUR CN27 CN28	VOLUME: 0	VR1, 3(G) VR2, 4(D)	6mV (30 mA)	(a)

ABGLEICH

NR.	GEGENSTAND	EINGANGS-EINSTELLUNG	AUSGANGS-EINSTELLUNG	VORSTÄRKER-EINSTELLUNG	ABGLEICH-PUNKTE	ABGLEICHEN FUR	ABB.
Wenn nicht anders angegeben, die einzelnen Schalter wie folgt einstellen: POWER: ON SPEAKER: B REC OUT: OFF SELECTOR: PHONO							
1	LEERLAUFSTROM	—	Einen Gleichspannungsmesser über CN27 CN28 anschließen.	VOLUME: 0	VR1, 3(L) VR2, 4(R)	6 mV (30 mA)	(a)

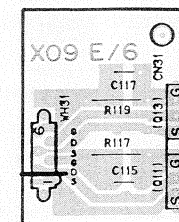
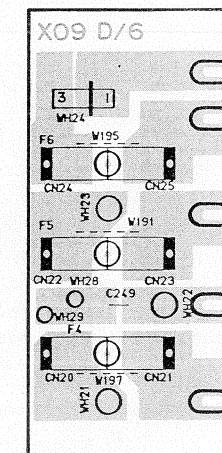
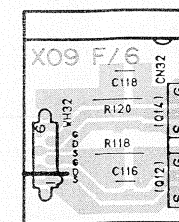
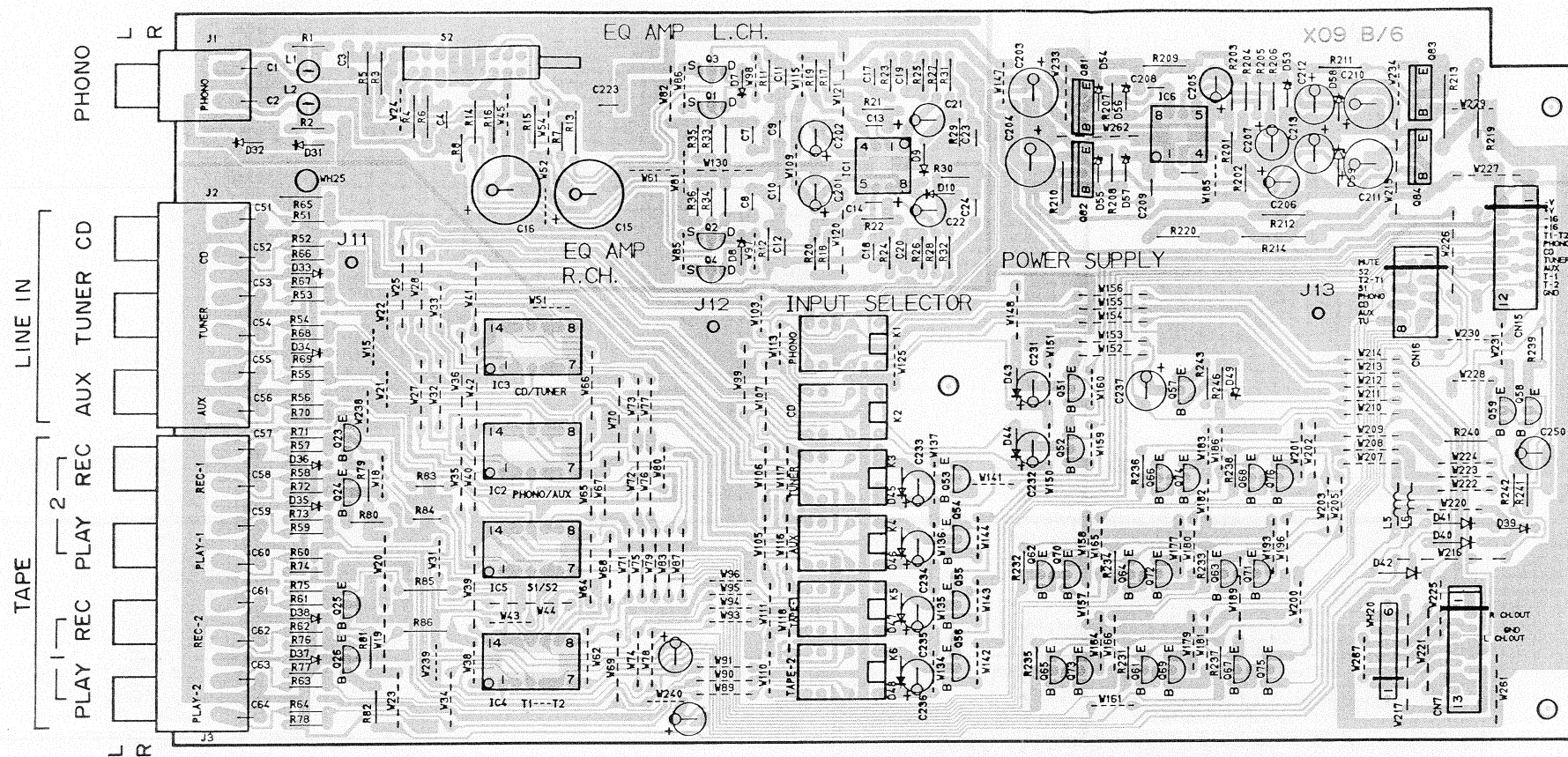
KA-4050R KA-4050R

WIRING DIAGRAM

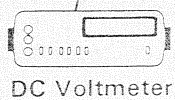
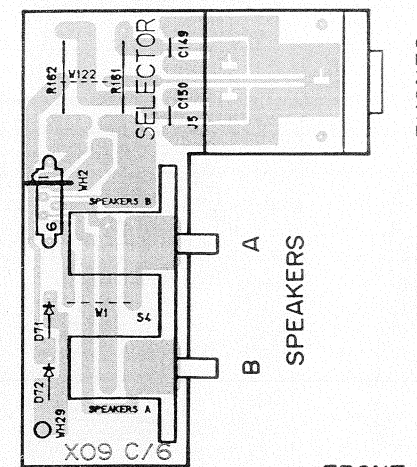
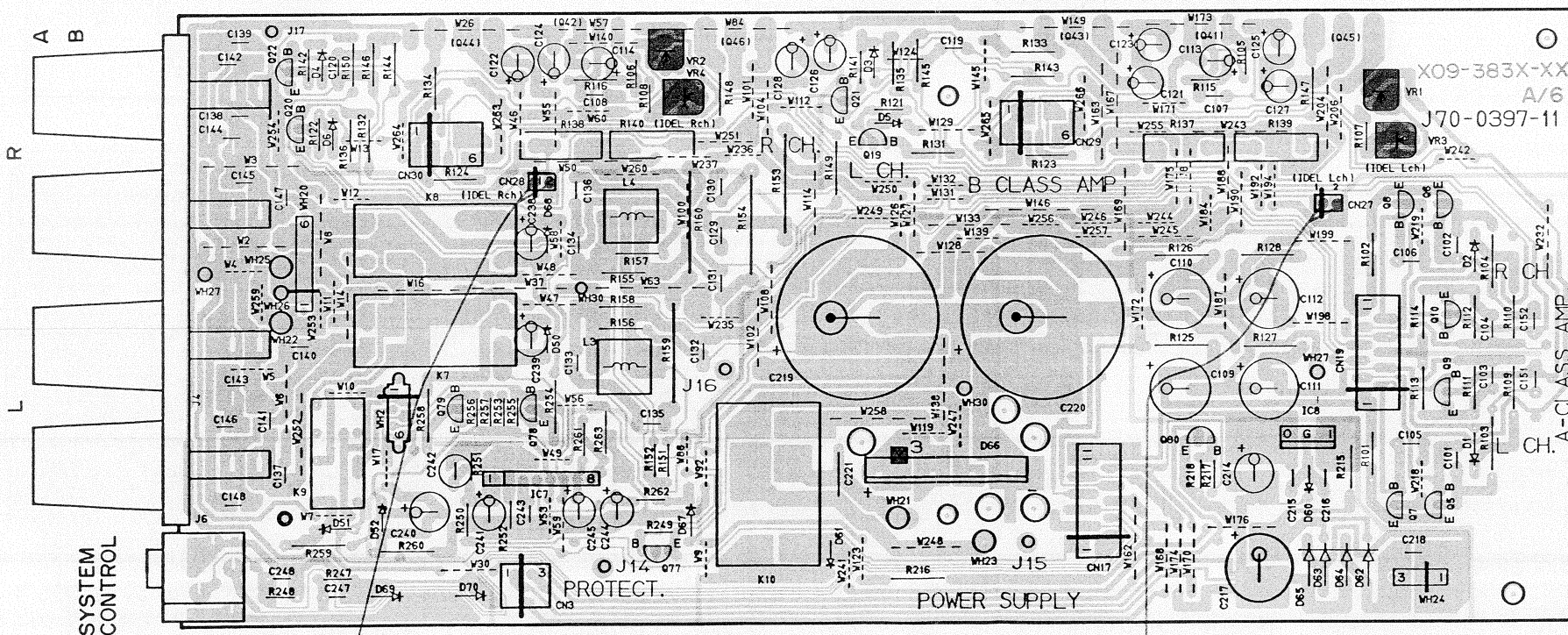


PC BOARD (Component side view)

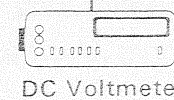
AUDIO UNIT (X09-383X-XX)



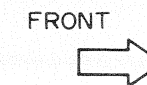
SPEAKERS (A or B : 4~16Ω, A and B : 8~16Ω)



(a) IDLE CURRENT: 6 mV (30mA)



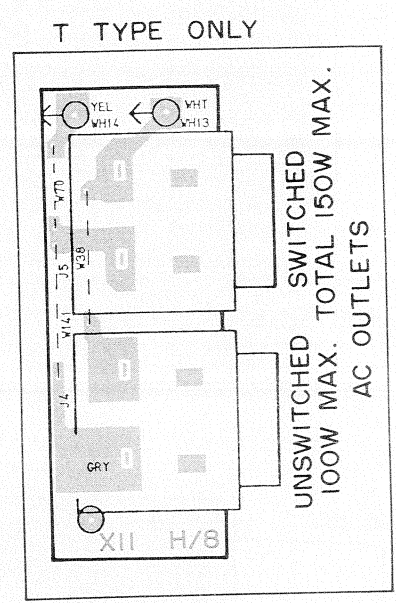
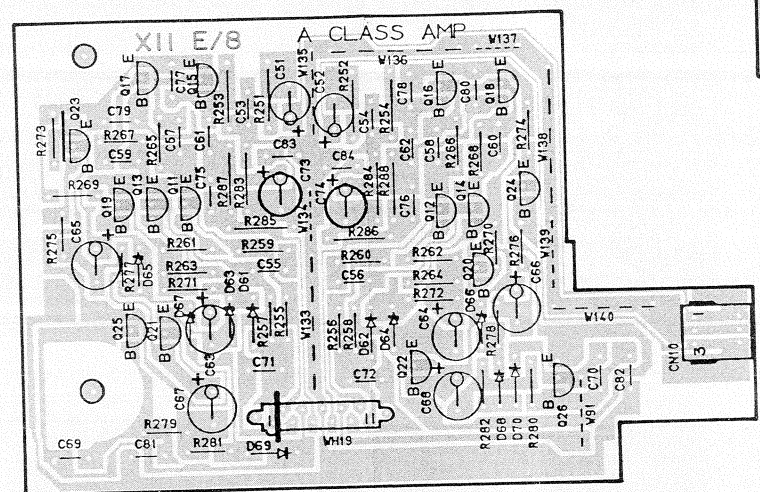
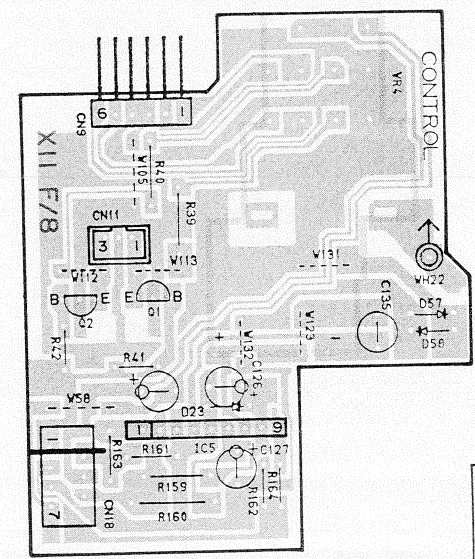
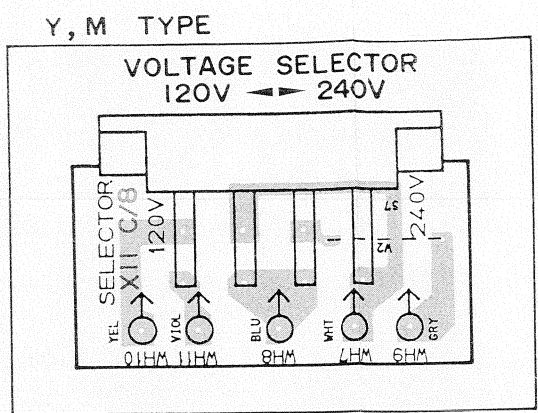
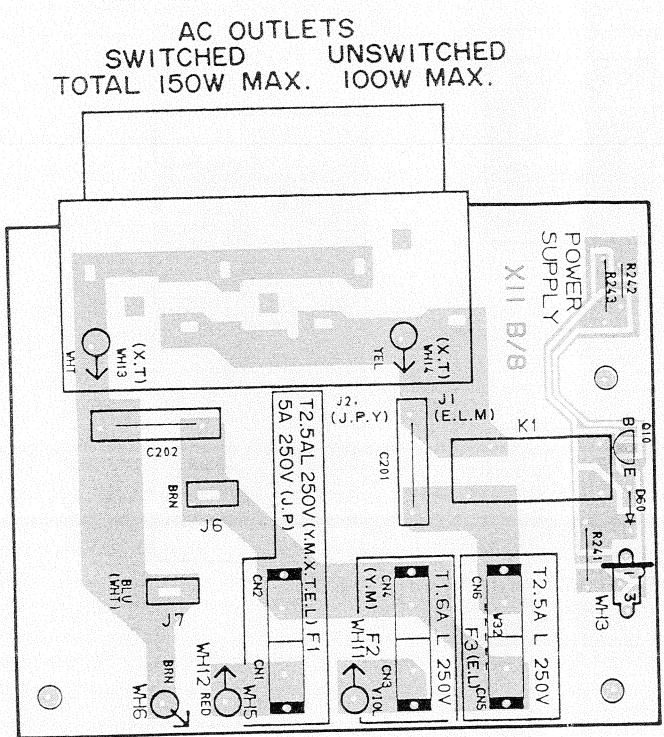
(a) IDLE CURRENT: 6 mV (30mA)



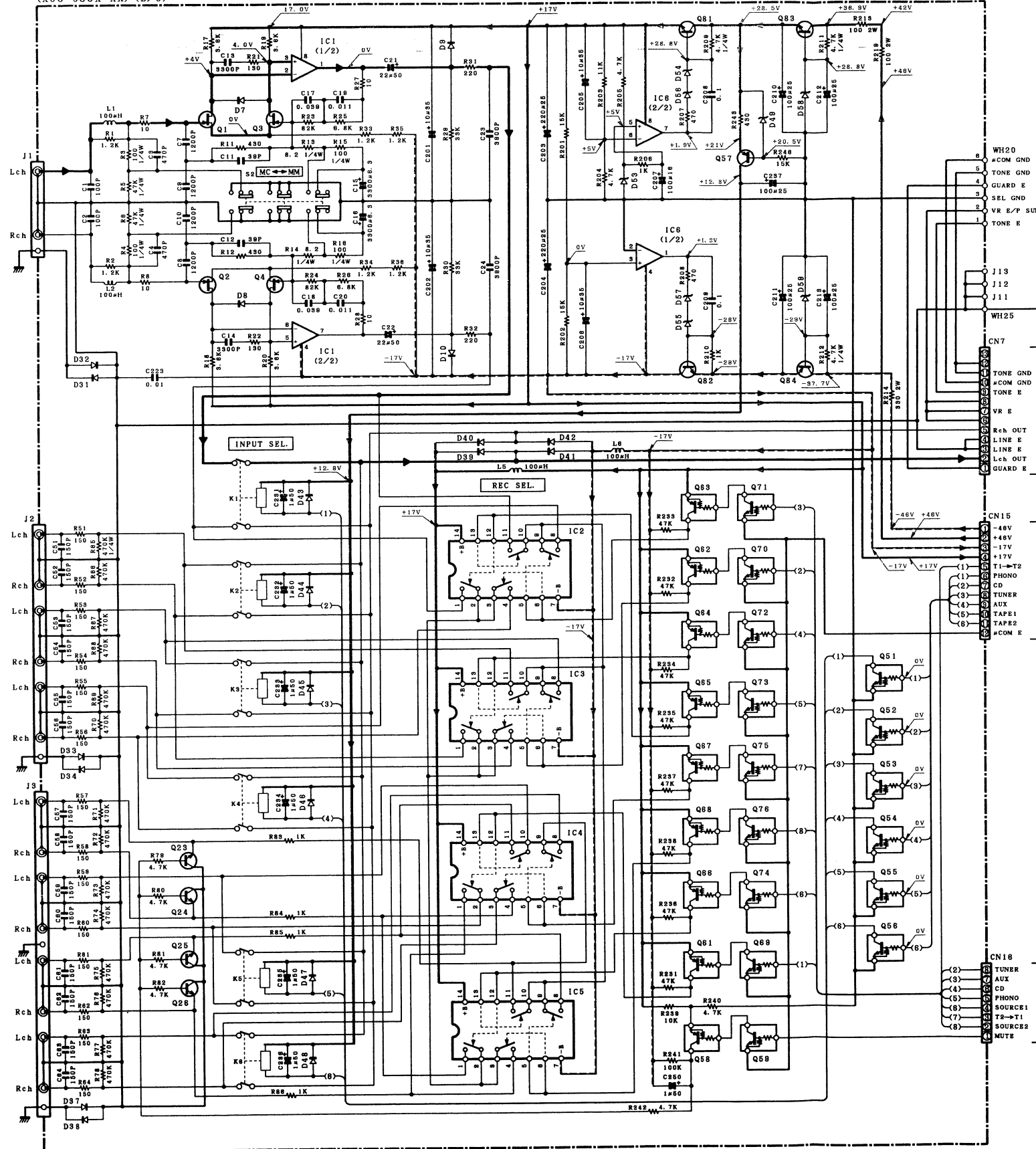
Refer to the schematic diagram for the values of resistors and capacitors.

PC BOARD (Component side view)

CONTROL UNIT (X11-340X-XX)



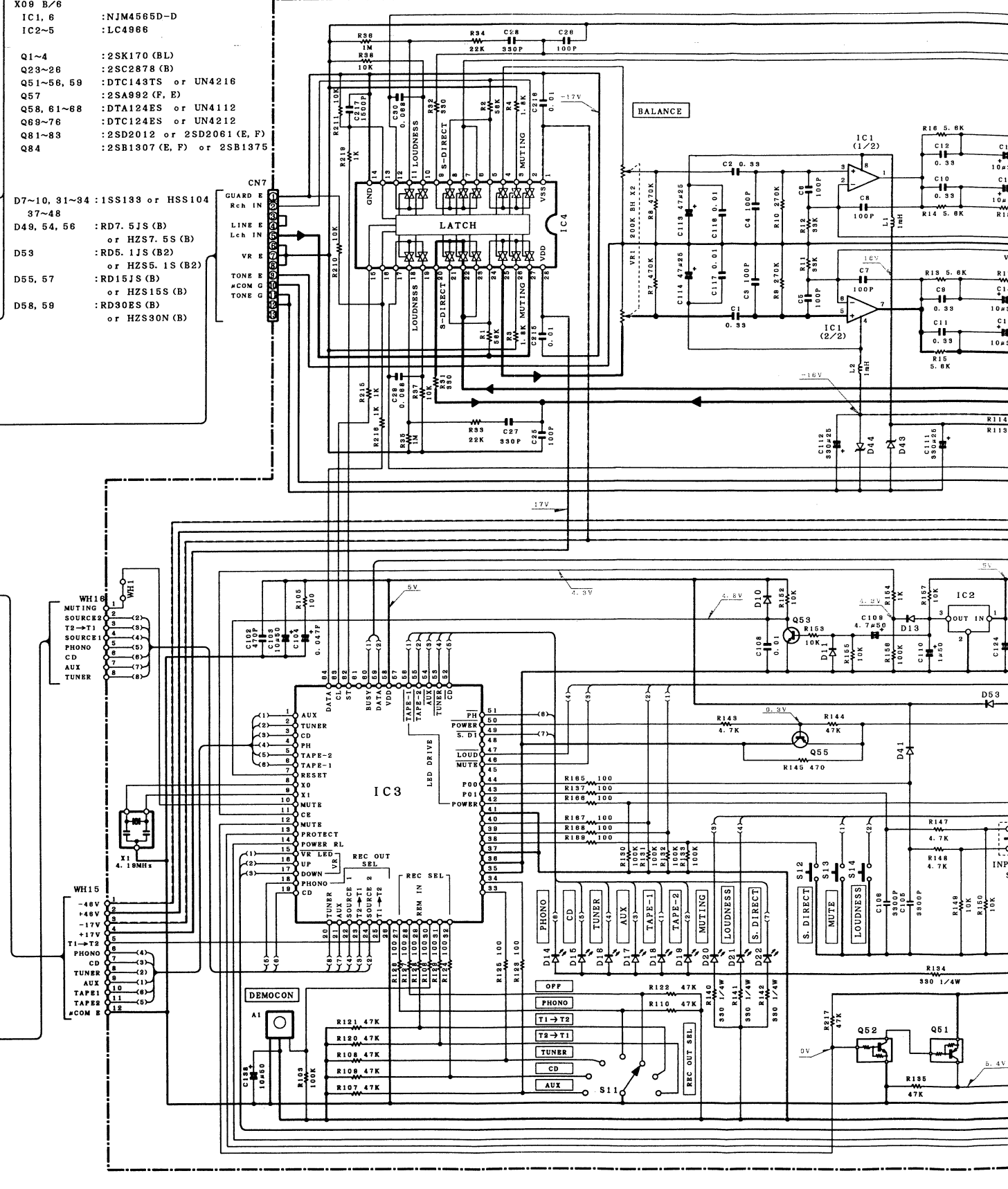
(X09-383X-XX) (B/6)



- X09 B/6
 IC1, 6 : NJM4565D-D
 IC2-5 : LC4966
 Q1-4 : 2SK170 (BL)
 Q23-26 : 2SC2878 (B)
 Q51-58, 59 : DTC143TS or UN4216
 Q57 : 2SA992 (F, E)
 Q58, 61-68 : DTA124ES or UN4112
 Q69-76 : DTC124ES or UN4212
 Q81-83 : 2SD2012 or 2SD2061 (E, F)
 Q84 : 2SB1307 (E, F) or 2SB1375

- D7-10, 31-34 : 1SS133 or HSS104
 37-48 :
 D49, 54, 56 : RD7.5JS (B)
 or HZS7.5S (B)
 D53 : RD5.1JS (B2)
 or HZS5.1S (B2)
 D55, 57 : RD15JS (B)
 or HZS15S (B)
 D58, 59 : RD30ES (B)
 or HZS30N (B)

(X11-340X-XX) (A/8)



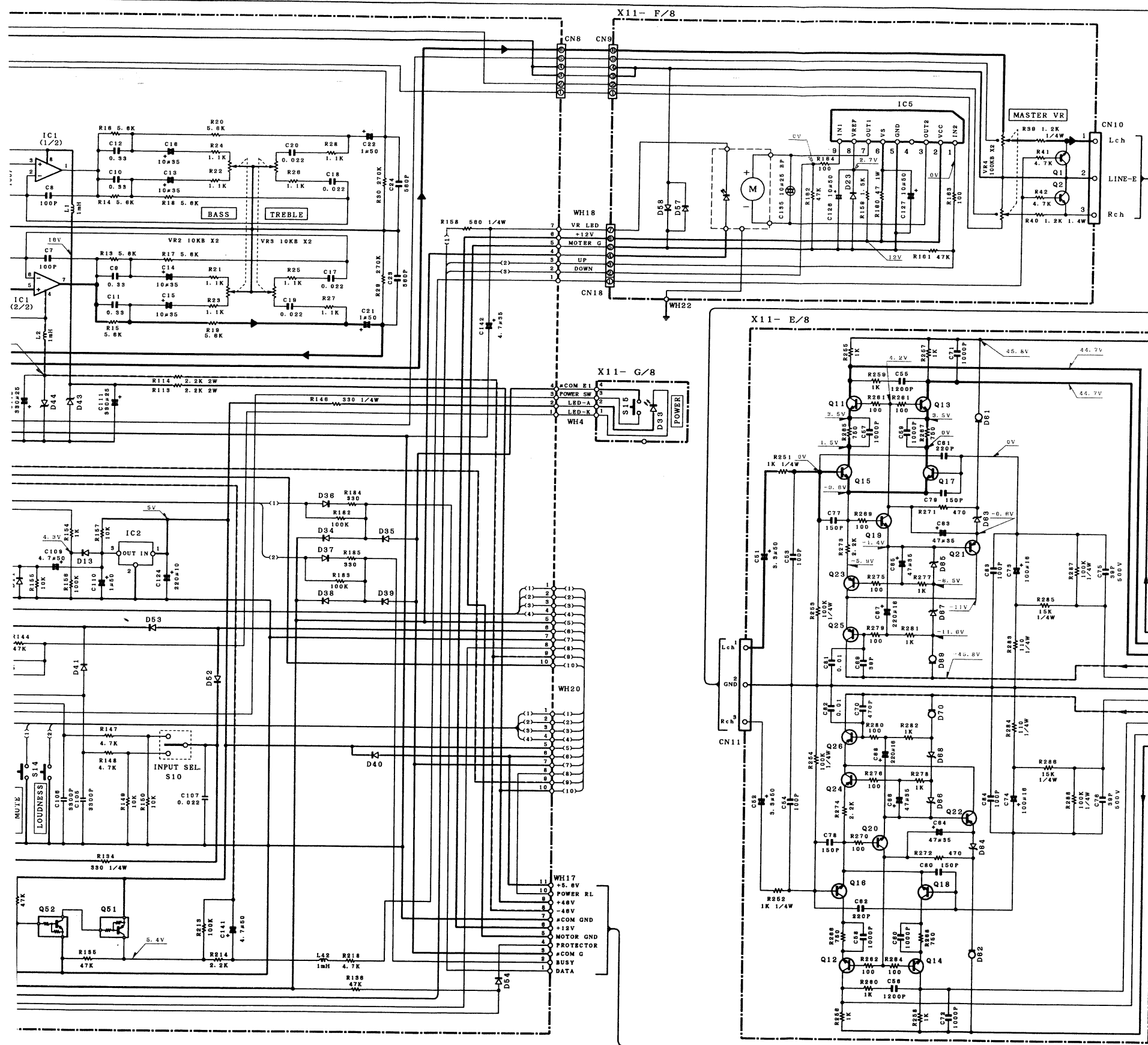
- WH10
 MUTE IN
 SOURCE2
 T2-T1
 SOURCE1
 PHONO
 AUX
 TUNER

- WH15
 -48V
 +48V
 -17V
 +17V
 PHONO
 TUNER
 CD
 TAPE1
 TAPE2
 #COM E

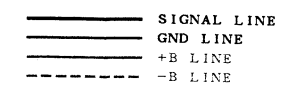
- DEMOCAN
 A1
 R121 47K
 R120 47K
 R119 47K
 R108 47K
 R107 47K

- PHONO
 CD
 TUNER
 TAPE-1
 TAPE-2
 MUTE
 REC OUT SEL

- IC2
 OUT IN
 S11



- TO X08 WH20, 25
- X11-340X-XX
- IC1 : NJM4565D-D
 - IC2 : PST529D
 - IC3 : #PD75104GF-778
 - IC4 : NJU7312L
 - IC5 : TA8409S
- Q1, 2 : 2SC2878 (B)
 - Q11~18 : 2SC1845 (F, E)
 - Q19, 20, 53 : 2SC2458 (Y, GR) or 2SC3311A (Q, R)
 - Q21~24, 55 : 2SA1048 (Y, GR) or 2SA1309A (Q, R)
 - Q25, 26 : 2SA992 (F, E)
 - Q51 : DTA124ES or UN4112
 - Q52 : DTC124ES or UN4212
- D10, 11, 13 : 1SS133 or HSS104
 - 34~41, 52, 53 : 57, 58
 - D14~22 : B30-1291-05
 - D33 : B30-1290-05
 - D23 : RD2.7ES (B) or HZS2.7N (B)
 - D43, 44 : RD18ES (B) or HZS18N (B)
 - D54 : 1SS131 or HSS104A
 - D61, 62 : E-102
 - D63~68 : RD5.1JS (B) or HZS5.1S (B)
 - D69, 70 : E-501

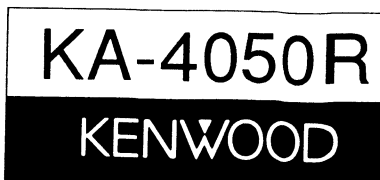


DC voltages are as measured with a high impedance voltmeter with no signal input. Values may vary slightly due to variations between individual instruments or/and units.

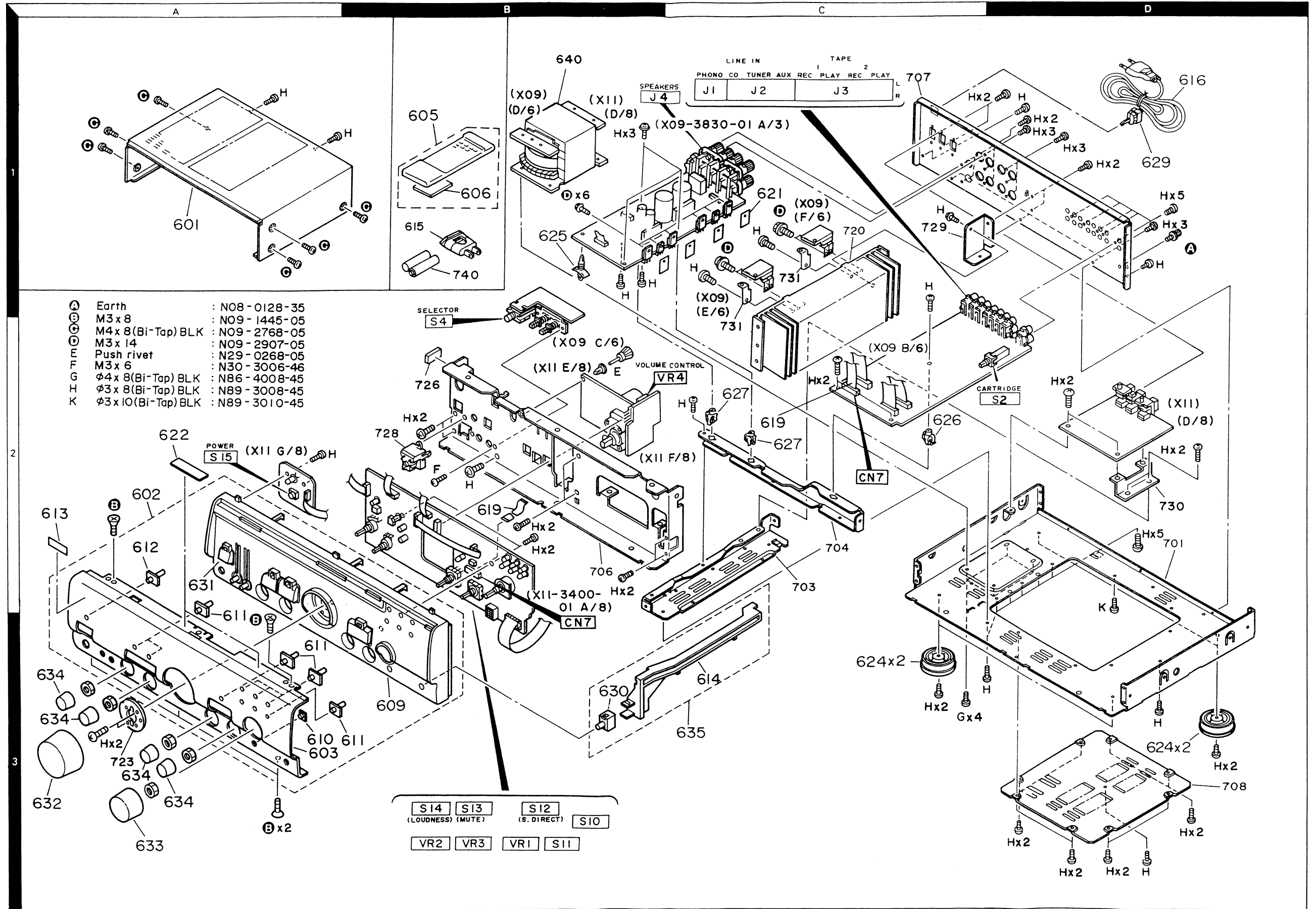
Les tensions c.c. doivent être mesurées avec un voltmètre à haute impédance sans signal d'entrée. Les valeurs peuvent différer légèrement du fait des variations inhérentes aux appareils et aux instruments de mesure individuels.

Die angegebenen Gleichspannungswerte wurden mit einem hochohmigen Spannungsmesser ohne Eingangssignal gemessen. Dabei schwanken die Meßwerte aufgrund von Unterschieden zwischen einzelnen Instrumenten oder Geräten u. U. geringfügig.

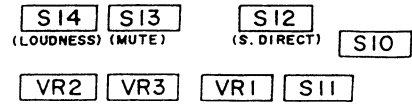
CAUTION: For continued safety, replace safety critical components only with manufacturer's recommended parts (refer to parts list). **⚠** Indicates safety critical components. To reduce the risk of electric shock, leakage-current or resistance measurements shall be carried out (exposed parts are acceptably insulated from the supply circuit) before the appliance is returned to the customer.



EXPLODED VIEW



- ⊕ Earth : N08-0128-35
- ⊕ M3 x 8 : N09-1445-05
- ⊕ M4 x 8 (Bi-Tap) BLK : N09-2768-05
- ⊕ M3 x 14 : N09-2907-05
- ⊕ Push rivet : N29-0268-05
- ⊕ M3 x 6 : N30-3006-46
- ⊕ φ4 x 8 (Bi-Tap) BLK : N86-4008-45
- ⊕ φ3 x 8 (Bi-Tap) BLK : N89-3008-45
- ⊕ φ3 x 10 (Bi-Tap) BLK : N89-3010-45



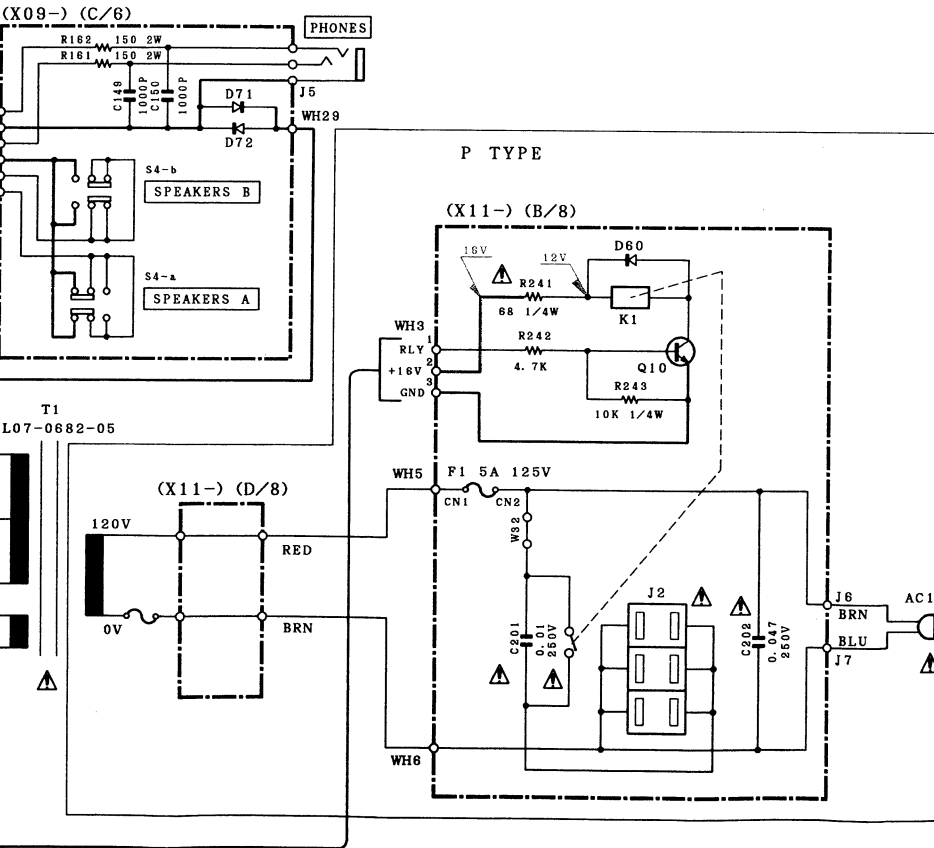
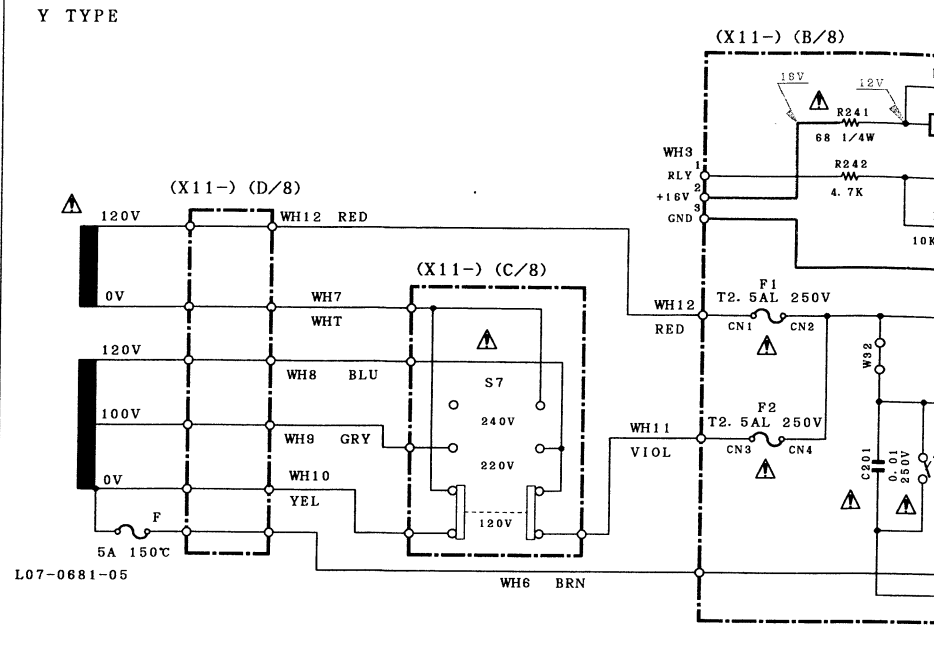
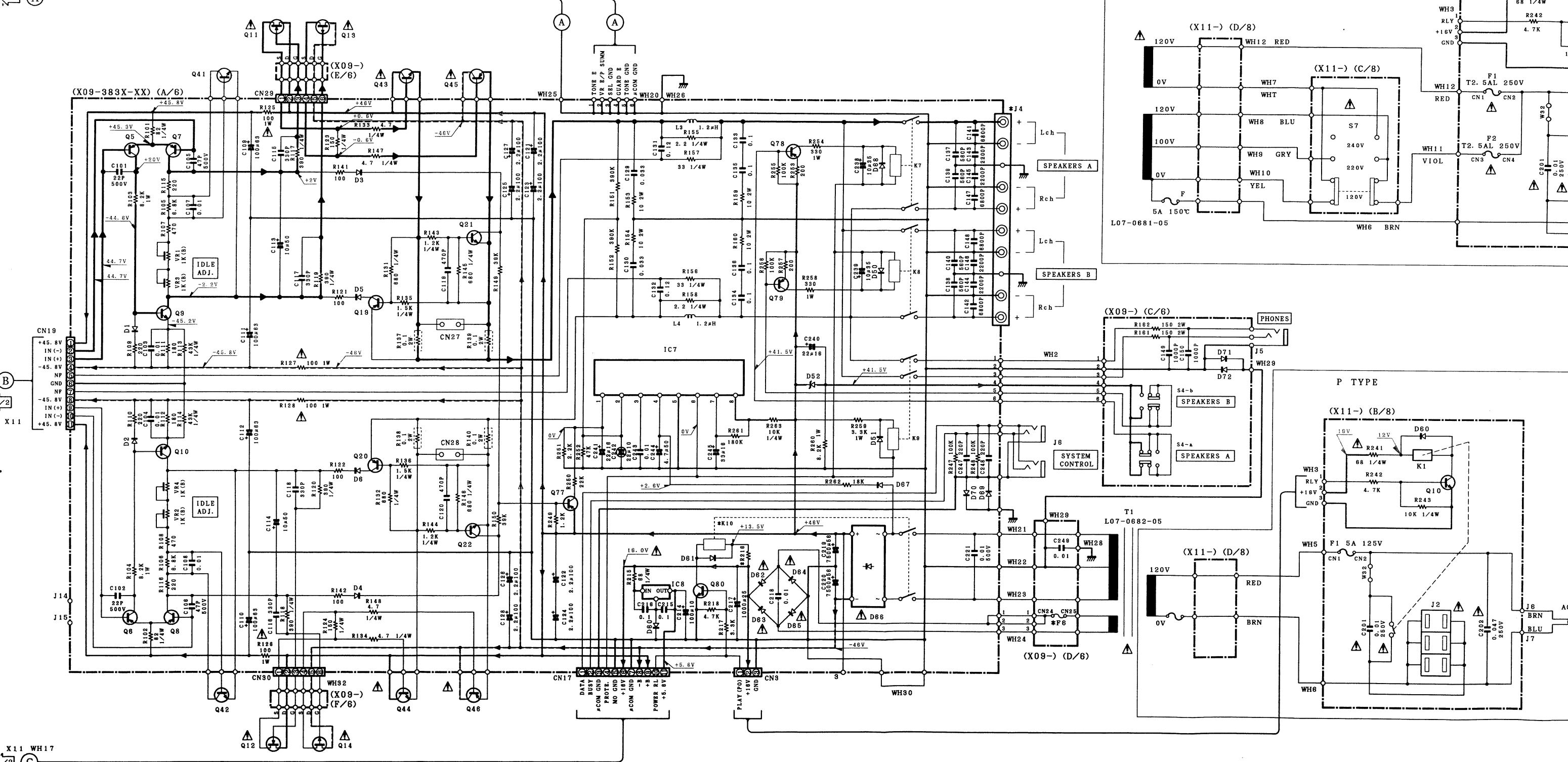
IC7 : #PC1237HA
 IC8 : #PC7805AHP or TA7805S

Q5~8 : 2SA1124 (R, S)
 Q9, 10 : 2SC2632 (R, S)
 Q11, 12 : 2SJ313
 Q13, 14 : 2SK2013
 Q19, 20, 77 : 2SA992 (F, E)
 Q21, 22 : 2SC1845 (F, E)
 Q41, 42 : 2SC4137F19 (V, W)
 Q43, 44 : 2SB1162BD*5
 Q45, 46 : 2SD1717BD*5

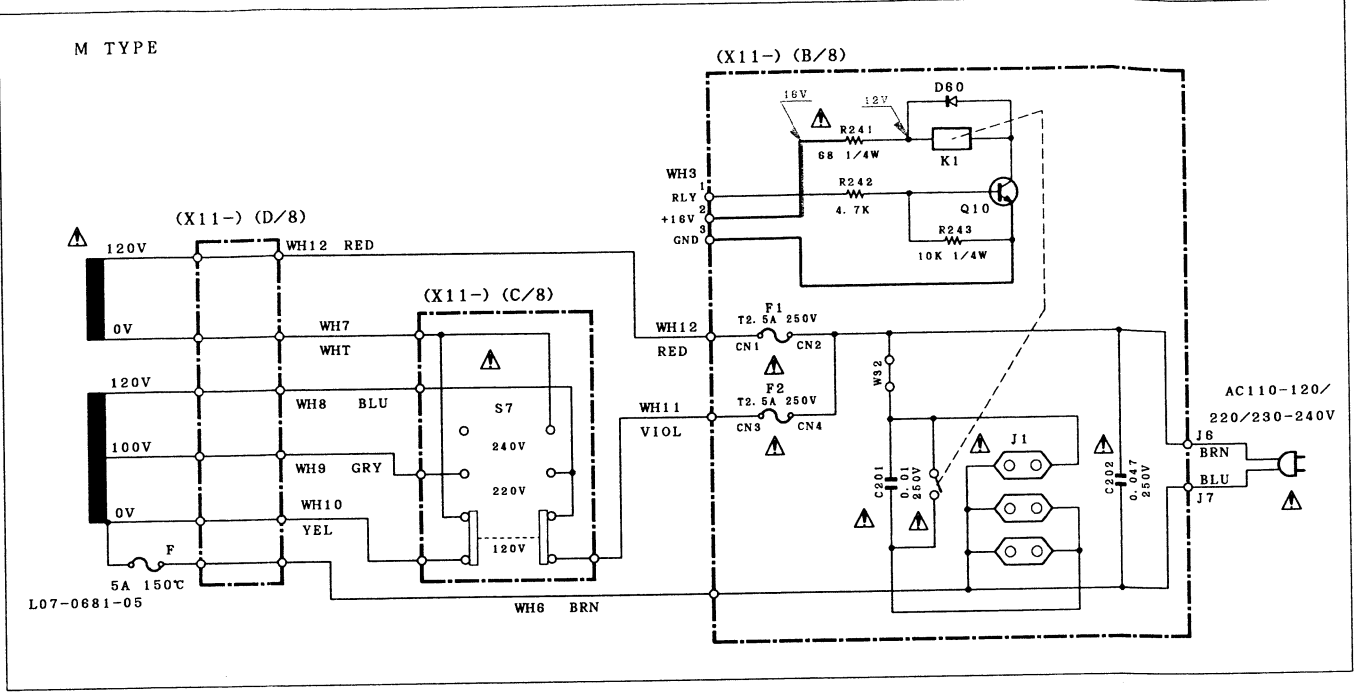
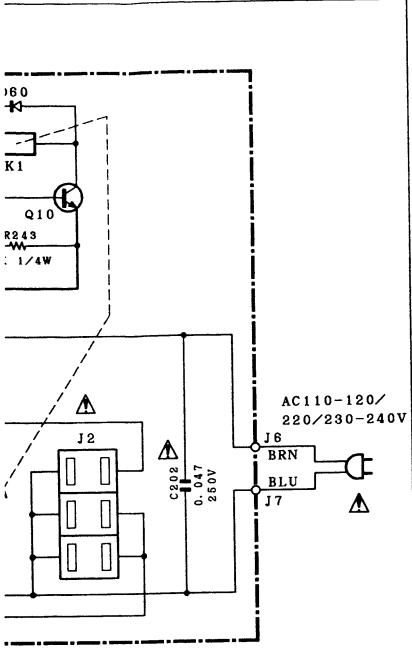
Q78, 79 : 2SA1110 (Q, R)
 Q80 : 2SC2458 (Y, GR) or 2SC3311A (Q, R)
 D1~6, 50, 51 : 1SS131 or HSS104A
 67, 68 :
 D52 : RD5.1JS (B2) or HZS5.1S (B2)
 D60, 61, 69 : 1SS133 or HSS104
 70~72 :
 D62~65 : S5688B or 1SR139-100
 D66 : RBV-602LFA or D5SBA20P03

DESTINATION	2-70	2-71	1-01
Ref. No	Y, M, X, T, E	L	P
R216	47 1W	47 1W	56 1W
K10	S78-0015-05	S78-0015-05	S51-2052-05
J4	E20-0839-15	E70-0029-05	E20-0839-15
F6	F06-1022-05	F06-1022-05	F04-1026-05

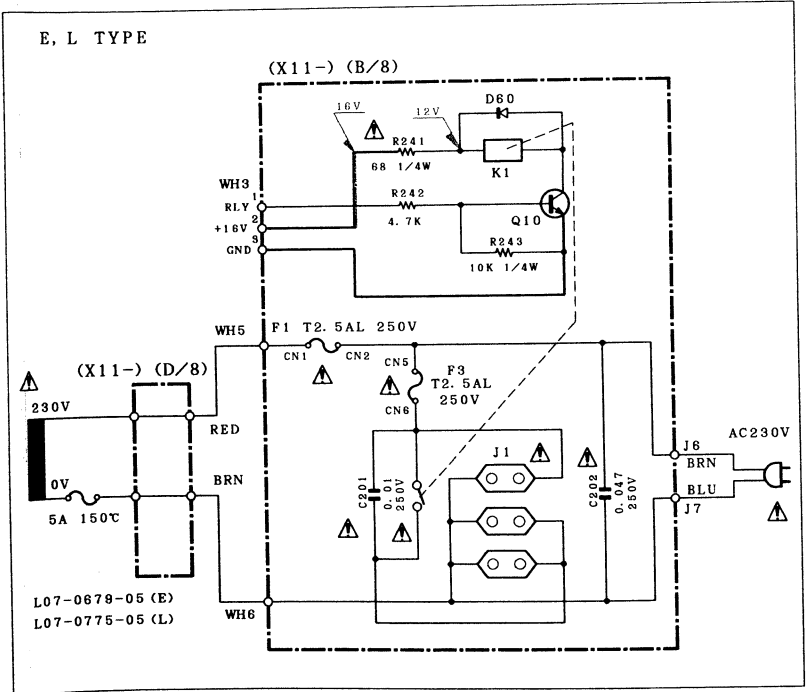
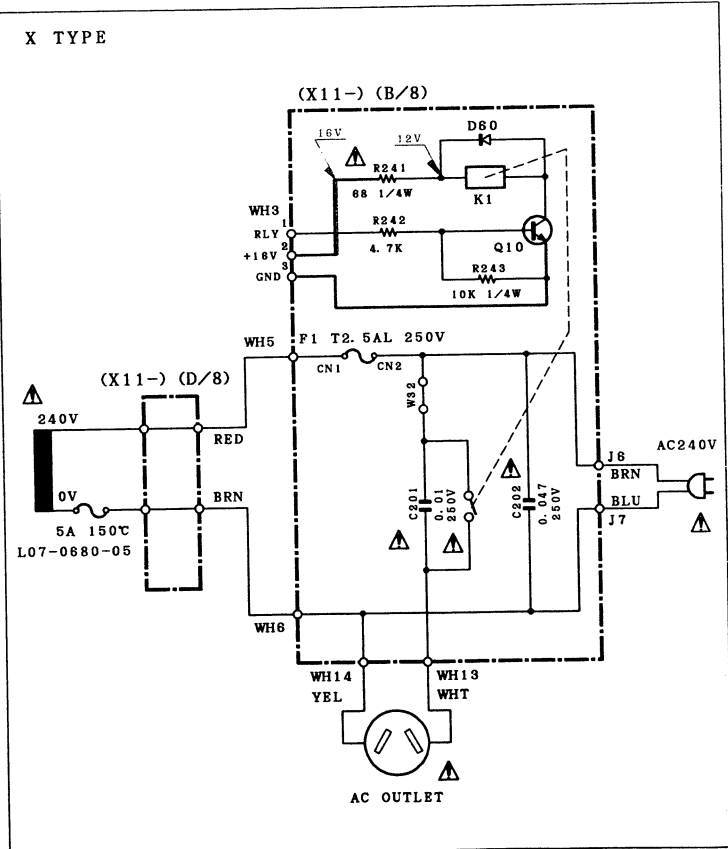
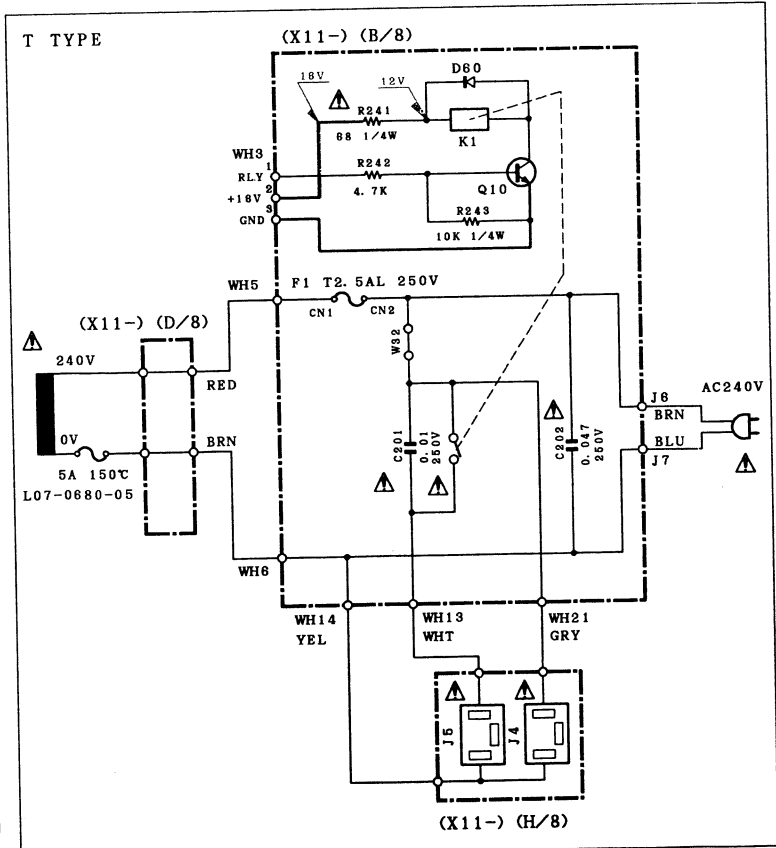
X09 WH20, 25



X11 WH17



D60 : 1SS133 or HSS104
 Q10 : 2SC2458 (Y, GR) or 2SC3311A (Q, R)



— SIGNAL LINE
 — GND LINE
 — +B LINE
 - - - - - -B LINE

CAUTION: For continued safety, replace safety critical components only with manufacturer's recommended parts (refer to parts list). **⚠** Indicates safety critical components. To reduce the risk of electric shock, leakage-current or resistance measurements shall be carried out (exposed parts are acceptably insulated from the supply circuit) before the appliance is returned to the customer.

- 2SA1124
- 2SA992
- 2SC1845
- 2SC2632
- 2SC2878
- 2SA1110
- DTA124ES
- DTC124ES
- DTC143TS
- UN4112
- 2SA1048
- 2SC2458
- 2SB1162BD*5
- 2SD1717BD*5
- UN4212
- UN4216
- 2SA1309A
- 2SC3311A
- 2SB1375
- 2SD2012
- NJM4565D-D
- TA8409S
- UPC1237HA
- NJU7312L
- 2SD2061
- 2SB1370
- 2SD2012
- PST529D
- UPC7805AHF
- 2SK170
- UPD75104GF-778
- LC4966
- TA7805S

DC voltages are as measured with a high impedance voltmeter with no signal input. Values may vary slightly due to variations between individual instruments or/and units.

Les tensions c.c. doivent être mesurées avec un voltmètre à haute impédance sans signal d'entrée. Les valeurs peuvent différer légèrement du fait des variations inhérentes aux appareils et aux instruments de mesure individuels.

Die angegebenen Gleichspannungswerte wurden mit einem hochohmigen Spannungsmesser ohne Eingangssignal gemessen. Dabei schwanken die Meßwerte aufgrund von Unterschieden zwischen einzelnen Instrumenten oder Geräten u. U. geringfügig.

PARTS LIST

× New Parts
Parts without Parts No. are not supplied.
Les articles non mentionnes dans le Parts No. ne sont pas fournis.
Teile ohne Parts No. werden nicht geliefert.

Ref. No. 参照番号	Address 位置	New Parts 新	Parts No. 部品番号	Description 部品名/規格	Desti- nation 仕向	Re- marks 備考
KA-4050R						
601	1A		A01-1986-02	METALLIC CABINET		
602	2A	*	A60-0381-21	PANEL ASSY		
603	3A	*	A60-0382-02	PANEL		
605	1B		A70-0932-05	REMOTE CONTROLLER ASSY		
606	1B	*	A09-0146-08	BATTERY COVER		
609	3B	*	B01-0483-11	PANEL ESCUTCHEON		
610	3A		B11-0237-14	COLOR FILTER		
611	3A		B12-0163-04	INDICATOR		
612	2A		B12-0232-04	INDICATOR		
613	2A		B43-0287-04	KENWOOD BADGE		
-			B46-0094-03	WARRANTY CARD	Y	
-			B46-0095-03	WARRANTY CARD	Y	
-			B46-0096-33	WARRANTY CARD	X	
-			B46-0121-23	WARRANTY CARD	P	
-			B46-0122-23	WARRANTY CARD	EL	
-			B46-0143-13	WARRANTY CARD	T	
-			B58-0513-04	CAUTION CARD (PRESET220-240)	Y	
-		*	B60-1136-00	INSTRUCTION MANUAL (ENGLISH)	ELP	
-		*	B60-1137-00	INSTRUCTION MANUAL (FRENCH)	EL	
-		*	B60-1138-00	INSTRUCTION MANUAL (GE,DU,IT)	EL	
-		*	B60-1139-00	INSTRUCTION MANUAL (CHINESE)	M	
-		*	B60-1140-00	INSTRUCTION MANUAL (SPANISH)	EM	
614	3C	*	D21-1657-23	EXTENSION SHAFT		
△ 615	1B		E03-0115-05	AC PLUG ADAPTER	M	
△ 616	1D		E30-0459-05	AC POWER CORD	ELM	
△ 616	1D		E30-0685-05	AC POWER CORD	Y	
△ 616	1D		E30-0974-05	AC POWER CORD	P	
△ 616	1D		E30-2714-05	AC POWER CORD	X	
△ 616	1D		E30-2718-05	AC POWER CORD	T	
△ 619	2B, 2C		E31-4747-05	FLAT CABLE X09-(CN7)-X11-(CN7)	X	
-			E03-0141-05	AC OUTLET		
621	1C		F20-1322-05	INSULATING BOARD		
622	2A	*	G10-0185-04	NON-WOVEN FABRIC		
-		*	H50-0606-04	ITEM CARTON CASE	ELPYMX	
-		*	H50-0630-04	ITEM CARTON CASE	T	
-		*	H10-5168-12	POLYSTYRENE FOAMED FIXTURE (L)	ELPYMX	
-		*	H10-5169-02	POLYSTYRENE FOAMED FIXTURE (R)	ELPYMX	
-		*	H10-5499-02	POLYSTYRENE FOAMED FIXTURE (L)	T	
-			H10-5500-02	POLYSTYRENE FOAMED FIXTURE (R)	T	
-			H25-0225-04	PROTECTION BAG (850X450X0.03)	ELPYMX	
-			H25-0232-04	PROTECTION BAG (235X350X0.03)	ELPYMX	
-			H25-0651-04	PROTECTION BAG (0232 PRINTED)	T	
-			H25-0654-04	PROTECTION BAG (0225 PRINTED)	T	
624	3C, 3D		J02-1072-05	FOOT		
625	1B		J19-0514-05	UNIT HOLDER		
626	2C		J19-3178-05	UNIT HOLDER		
627	2C		J19-3179-05	UNIT HOLDER		
△ 629	1D		J42-0083-05	POWER CORD BUSHING		
-			J61-0307-05	WIRE BAND		

L:Scandinavia K:USA P:Canada
Y:PX(Far East, Hawaii) T:England E:Europe
Y:AAFES(Europe) X:Australia M:Other Areas

△ indicates safety critical components.

PARTS LIST

× New Parts
Parts without Parts No. are not supplied.
Les articles non mentionnes dans le Parts No. ne sont pas fournis.
Teile ohne Parts No. werden nicht geliefert.

Ref. No. 参照番号	Address 位置	New Parts 新	Parts No. 部品番号	Description 部品名/規格	Desti- nation 仕向	Re- marks 備考
630	3B		K29-3405-04	KNØB CARTRIDGE (MM/MC)		
631	2A		K29-4210-03	KNØB POWER		
632	3A	*	K29-4213-14	KNØB VOLUME		
633	3A		K29-4215-04	KNØB INPUT SELECTOR		
634	3A		K29-4216-04	KNØB TONE, BAL, REC OUT SEL		
635	3C	*	K29-4293-23	KNØB CARTRIDGE (MM/MC ASSY)		
△ 640	1B	*	L07-0679-05	POWER TRANSFORMER	E	XT YM P L
△ 640	1B	*	L07-0680-05	POWER TRANSFORMER		
△ 640	1B	*	L07-0681-05	POWER TRANSFORMER		
△ 640	1B	*	L07-0682-05	POWER TRANSFORMER		
△ 640	1B	*	L07-0775-05	POWER TRANSFORMER		
A	1D		N08-0128-35	BINDING POST (EARTH)		
B	2A, 3A		N09-1445-05	SET SCREW (M3X8)		
C	1A		N09-2768-05	SEMS (TAPTITE SCREW)(4X8)		
D	1B, 1C		N09-2907-05	SEMS (TAPTITE SCREW)(3X14)		
E	2B		N29-0268-05	PUSH RIVET		
F	1D, 3D		N30-3006-46	PAN HEAD MACHINE SCREW		
G	3D		N86-4008-45	BINDING HEAD TAPTITE SCREW		
H	3C		N89-3008-45	BINDING HEAD TAPTITE SCREW		
K	2B		N89-3010-45	BINDING HEAD TAPTITE SCREW		
KA-4050R (TG: TITAN GRAY)						
601	1A	*	A01-3029-02	METALLIC CABINET		
602	2A	*	A60-0383-21	PANEL ASSY		
603	3A	*	A60-0384-02	PANEL		
605	1B		A70-0932-05	REMOTE CONTROLLER ASSY		
606	1B	*	A09-0146-08	BATTERY COVER		
609	3B	*	B01-0500-01	PANEL ESCUTCHEON		
610	3A		B11-0237-14	COLOR FILTER		
611	3A		B12-0163-04	INDICATOR		
612	2A	*	B12-0232-04	INDICATOR		
613	2A		B43-0287-04	KENWOOD BADGE		
-			B46-0122-23	WARRANTY CARD		
-		*	B60-1136-00	INSTRUCTION MANUAL (ENGLISH)		
-		*	B60-1137-00	INSTRUCTION MANUAL (FRENCH)		
-		*	B60-1138-00	INSTRUCTION MANUAL (GE,DU,IT)		
-		*	B60-1140-00	INSTRUCTION MANUAL (SPANISH)	E	
614	3C	*	D21-1657-23	EXTENSION SHAFT		
△ 616	1D		E30-0459-05	AC POWER CORD		
619	2B, 2C		E31-4747-05	FLAT CABLE X09-(CN7)-X11-(CN7)		
621	1C		F20-1322-05	INSULATING BOARD		
622	2A	*	G10-0185-04	NON-WOVEN FABRIC		
-		*	H50-0607-04	ITEM CARTON CASE		
-		*	H10-5168-12	POLYSTYRENE FOAMED FIXTURE (L)		
-		*	H10-5169-02	POLYSTYRENE FOAMED FIXTURE (R)		
-		*	H25-0225-04	PROTECTION BAG (850X450X0.03)		
-		*	H25-0232-04	PROTECTION BAG (235X350X0.03)		
-		*	H25-0651-04	PROTECTION BAG (0232 PRINTED)		
-		*	H25-0654-04	PROTECTION BAG (0225 PRINTED)		
624	3C, 3D		J02-1072-05	FOOT		
625	1B		J19-0514-05	UNIT HOLDER		
626	2C		J19-3178-05	UNIT HOLDER		
627	2C		J19-3179-05	UNIT HOLDER		
△ 629	1D		J42-0083-05	POWER CORD BUSHING		

L:Scandinavia K:USA P:Canada
Y:PX(Far East, Hawaii) T:England E:Europe
Y:AAFES(Europe) X:Australia M:Other Areas

△ indicates safety critical components.

PARTS LIST

× New Parts

Parts without Parts No. are not supplied.

Les articles non mentionnes dans le Parts No. ne sont pas fournis.

Teile ohne Parts No. werden nicht geliefert.

Ref. No. 参照番号	Address 位置	New Parts 新	Parts No. 部品番号	Description 部品名 / 規格	Desti- nation 仕 向	Re- marks 備考
630	3B		K29-3405-04	KNØB CARTRIDGE (MM/MC)		
631	2A		K29-4210-03	KNØB POWER		
632	3A	*	K29-4213-14	KNØB VOLUME		
633	3A		K29-4215-04	KNØB INPUT SELECTØR		
634	3A		K29-4216-04	KNØB TØNE, BAL, REC ØUT SEL		
635	3C	*	K29-4293-23	KNØB CARTRIDGE (MM/MC ASSY)		
△ 640	1B	*	L07-0679-05	POWER TRANSFORMER	E	
△ 640	1B	*	L07-0680-05	POWER TRANSFORMER	X	
△ 640	1B	*	L07-0681-05	POWER TRANSFORMER	T	
△ 640	1B	*	L07-0682-05	POWER TRANSFORMER	P	
△ 640	1B	*	L07-0775-05	POWER TRANSFORMER	L	
A	1D		N08-0128-35	BINDING POST (EARTH)		
B	2A, 3A		N09-1445-05	SET SCREW (M3X8)		
C	1A		N09-2768-05	SEMS (TAPTITE SCREW)(4X8)		
D	1B, 1C		N09-2907-05	SEMS (TAPTITE SCREW)(3X14)		
E	2B		N29-0268-05	PUSH RIVET		
F	1D, 3D		N30-3006-46	PAN HEAD MACHINE SCREW		
G	3D		N86-4008-45	BINDING HEAD TAPTITE SCREW		
H	3C		N89-3008-45	BINDING HEAD TAPTITE SCREW		
K	2B		N89-3010-45	BINDING HEAD TAPTITE SCREW		
KA-4050R (TG: TITAN GRAY)						
601	1A	*	A01-3029-02	METALLIC CABINET		
602	2A	*	A60-0383-21	PANEL ASSY		
603	3A	*	A60-0384-02	PANEL		
605	1B		A70-0932-05	REMOTE CONTRØLLER ASSY		
606	1B	*	A09-0146-08	BATTERY COVER		
609	3B	*	B01-0500-01	PANEL ESCUTCHEON		
610	3A		B11-0237-14	CØLØR FILTER		
611	3A		B12-0163-04	INDICATOR		
612	2A	*	B12-0232-04	INDICATOR		
613	2A		B43-0287-04	KENWOOD BADGE		
-			B46-0122-23	WARRANTY CARD		
-		*	B60-1136-00	INSTRUCTION MANUAL (ENGLISH)		
-		*	B60-1137-00	INSTRUCTION MANUAL (FRENCH)		
-		*	B60-1138-00	INSTRUCTION MANUAL (GE, DU, IT)		
-		*	B60-1140-00	INSTRUCTION MANUAL (SPANISH)	E	
614	3C	*	D21-1657-23	EXTENSION SHAFT		
△ 616	1D		E30-0459-05	AC POWER CØRD		
619	2B, 2C		E31-4747-05	FLAT CABLE X09-(CN7)-X11-(CN7)		
621	1C		F20-1322-05	INSULATING BOARD		
622	2A	*	G10-0185-04	NON-WOVEN FABRIC		
-		*	H50-0607-04	ITEM CARTØN CASE		
-		*	H10-5168-12	PØLYSTYRENE FØAMED FIXTURE (L)		
-		*	H10-5169-02	PØLYSTYRENE FØAMED FIXTURE (R)		
-			H25-0225-04	PROTECTION BAG (850X450X0.03)		
-			H25-0232-04	PROTECTION BAG (235X350X0.03)		
624	3C, 3D		J02-1072-05	FOOT		
625	1B		J19-0514-05	UNIT HOLDER		
626	2C		J19-3178-05	UNIT HOLDER		
627	2C		J19-3179-05	UNIT HOLDER		
△ 629	1D		J42-0083-05	POWER CØRD BUSHING		

L:Scandinavia K:USA P:Canada
 Y:PX(Far East, Hawaii) T:England E:Europe
 Y:AAFES(Europe) X:Australia M:Other Areas

△ indicates safety critical components.

PARTS LIST

× New Parts

Parts without Parts No. are not supplied.

Les articles non mentionnes dans le Parts No. ne sont pas fournis.

Teile ohne Parts No. werden nicht geliefert.

Ref. No. 参照番号	Address 位置	New Parts 新	Parts No. 部品番号	Description 部品名 / 規格	Desti- nation 仕 向	Re- marks 備考
-			J61-0307-05	WIRE BAND		
630	3B	*	K29-5684-13	KNØB CARTRIDGE (MM/MC)		
631	2A	*	K29-5678-03	KNØB POWER		
632	3A	*	K29-5679-14	KNØB VOLUME		
633	3A		K29-5682-04	KNØB INPUT SELECTØR		
634	3A	*	K29-5683-04	KNØB TØNE, BAL, REC ØUT SEL		
635	3C	*	K29-5685-04	KNØB CARTRIDGE (MM/MC ASSY)		
△ 640	1B	*	L07-0679-05	POWER TRANSFORMER	E	
△ 640	1B	*	L07-0775-05	POWER TRANSFORMER	L	
A	1D		N08-0128-35	BINDING POST (ア-ス)		
B	2A, 3A		N09-1445-05	SET SCREW (M3X8 ヶラ)		
C	1A		N09-2768-05	SEMS (TAPTITE SCREW)(4X8 ハット)		
D	1B, 1C		N09-2907-05	SEMS (TAPTITE SCREW)(3X14)		
E	2B		N29-0268-05	PUSH RIVET		
F	1D, 3D		N30-3006-46	PAN HEAD MACHINE SCREW		
G	3D		N86-4008-45	BINDING HEAD TAPTITE SCREW		
H	3C		N89-3008-45	BINDING HEAD TAPTITE SCREW		
K	2B		N89-3010-45	BINDING HEAD TAPTITE SCREW		
AUDIO UNIT (X09-383X-XX)						
C1 ,2			CF92FV1H101K	MF 100PF	K	
C3 ,4			CF92FV1H471J	MF 470PF	J	
C7 -10			CF92FV1H122J	MF 1200PF	J	
C11 ,12			CC45FSL1H390J	CERAMIC 39PF	J	
C13 ,14			CF92FV1H332J	MF 3300PF	J	
C15 ,16			C90-1951-05	ELECTRØ 3300UF	6.3WV	
C17 ,18			CF92FV1H393J	MF 0.039UF	J	
C19 ,20			CF92FV1H113J	MF 0.011UF	J	
C21 ,22			CE04KW1H220M	ELECTRØ 22UF	50WV	
C23 ,24			CF92FV1H392J	MF 3900PF	J	
C51 -64			CF92FV1H151K	MF 150PF	K	
C101,102			CC45FSL2H220J	CERAMIC 22PF	J	
C103,104			CF92FV1H103J	MF 0.010UF	J	
C105,106			CC45FSL2H470J	CERAMIC 47PF	J	
C107,108			CF92FV1H103J	MF 0.010UF	J	
C109-112			CE04DW1J101M	ELECTRØ 100UF	63WV	
C113,114			CE04KW1H100M	ELECTRØ 10UF	50WV	
C119,120			CF92FV1H471J	MF 470PF	J	
C121-128			CE04KW2A2R2M	ELECTRØ 2.2UF	100WV	
C129,130			CF92FV1H333J	MF 0.033UF	J	
C131,132			CF92FV1H124J	MF 0.12UF	J	
C133-136			CF92FV1H104J	MF 0.10UF	J	
C137-140			CF92FV1H561J	MF 560PF	J	
C141,142			CF92FV1H682J	MF 6800PF	J	
C143-146			CK45FB1H222K	CERAMIC 2200PF	K	
C147,148			CF92FV1H682J	MF 6800PF	J	
C149,150			CF92FV1H102J	MF 1000PF	J	
C201,202			CE04KW1V100M	ELECTRØ 10UF	35WV	
C203,204			CE04KW1E221M	ELECTRØ 220UF	25WV	
C205,206			CE04KW1V100M	ELECTRØ 10UF	35WV	
C207			CE04KW1H470M	ELECTRØ 47UF	50WV	
C208,209			CF92FV1H104J	MF 0.10UF	J	
C210,211			CE04KW1V101M	ELECTRØ 100UF	35WV	
C212,213			CE04KW1V470M	ELECTRØ 47UF	35WV	

L:Scandinavia K:USA P:Canada
 Y:PX(Far East, Hawaii) T:England E:Europe
 Y:AAFES(Europe) X:Australia M:Other Areas

△ indicates safety critical components.

PARTS LIST

× New Parts

Parts without Parts No. are not supplied.

Les articles non mentionnés dans le Parts No. ne sont pas fournis.

Teile ohne Parts No. werden nicht geliefert.

Ref. No. 参照番号	Address 位置	New Parts 新	Parts No. 部品番号	Description 部品名 / 規格	Desti- nation 仕 向	Re- marks 備考
C214 C215, 216 C217 C218 C219, 220		*	CE04KW1A101M CF92FV1H104J CE04KW1E102M CK45FF1H103Z C90-3510-05	ELECTRØ 100UF 10WV MF 0.10UF J ELECTRØ 1000UF 25WV CERAMIC 0.010UF Z ELECTRØ 7500UF 56WV		
C221 C223 C231-236 C237 C238, 239			CK45FE2H103P CF92FV1H103J CE04KW1H010M CE04KW1E101M CE04KW1V100M	CERAMIC 0.010UF P MF 0.010UF J ELECTRØ 1.0UF 50WV ELECTRØ 100UF 25WV ELECTRØ 10UF 35WV		
C240, 241 C242 C243 C244 C245			CE04KW1C220M CE04HW1A220M CK45FF1H103Z CE04KW1H4R7M CE04KW1C330M	ELECTRØ 22UF 16WV NP-ELEC 22UF 10WV CERAMIC 0.010UF Z ELECTRØ 4.7UF 50WV ELECTRØ 33UF 16WV		
C247, 248 C249 C250			CC45FSL1H221J CK45FF1H103Z CE04KW1H010M	CERAMIC 220PF J CERAMIC 0.010UF Z ELECTRØ 1.0UF 50WV		
CN7 J1 J2 J3 J4	2C		E40-4153-05 E13-0249-05 E13-0633-05 E13-0825-05 E20-0839-15	FLAT CABLE CONNCTOR PHONE JACK PHONE PHONE JACK(6P) CD/TUNER/AUX PHONE JACK TAPE1,2 REC,PLAY SCREW TERMINAL BOARD SPEAKERS	EPYMXT	
J4 J5 J6			E70-0029-05 E11-0208-05 E11-0188-05	SCREW TERMINAL BOARD SPEAKERS PHONE JACK PHONES MINIATURE PHONE JACK SYNCHRO	L	
F6 F6			F04-1026-05 F06-1022-05	FUSE (UL) (250V 1A UL) FUSE (SEMKØ) (250V T1AL)	P	ELYMXT
- CN24, 25			J11-0098-05 J13-0075-05	WIRE CLAMPER FUSE CLIP		
L1 ,2 L3 ,4 L5 ,6			L40-1011-47 L39-0085-05 L40-1011-17	SMALL FIXED INDUCTOR(100UH,K) PHASE COMPENSATION COIL SMALL FIXED INDUCTOR(100UH,K)		
R23 ,24 R25 ,26 R101,102 R103,104 R117-120			RN14BK2C8202FTS RN14BK2C6801FTS RD14AB2E820JTS RS14DB3A822JTE RD14AB2E391JTS	RN 82.0K F 1/6W RN 6.80K F 1/6W FL-PROOF RD 82 J 1/4W FL-PROOF RS 8.2K J 1W FL-PROOF RD 390 J 1/4W		
R123,124 R125-128 R131,132 R133,134 R135,136			RD14AB2E151JTS RS14DB3A101JTE RD14AB2E681JTS RD14AB2E4R7JTS RD14AB2E152JTS	FL-PROOF RD 150 J 1/4W FL-PROOF RS 100 J 1W FL-PROOF RD 680 J 1/4W FL-PROOF RD 4.7 J 1/4W FL-PROOF RD 1.5K J 1/4W		
R137-140 R143,144 R145,146 R147,148 R153,154			R92-0205-05 RD14AB2E122JTS RD14AB2E681JTS RD14AB2E4R7JTS RS14GB3D100JKW	METAL-PLATE 0.1 K 2W FL-PROOF RD 1.2K J 1/4W FL-PROOF RD 680 J 1/4W FL-PROOF RD 4.7 J 1/4W FL-PROOF RS 10 J 2W		
R155 R156,157 R158 R159,160 R161,162			RD14AB2E2R2JTS RD14AB2E330JTS RD14AB2E2R2JTS RS14GB3D100JKW RS14DB3D151JTE	FL-PROOF RD 2.2 J 1/4W FL-PROOF RD 33 J 1/4W FL-PROOF RD 2.2 J 1/4W FL-PROOF RS 10 J 2W FL-PROOF RS 150 J 2W		

L:Scandinavia K:USA P:Canada
Y:PX(Far East, Hawaii) T:England E:Europe
Y:AAFES(Europe) X:Australia M:Other Areas

⚠ indicates safety critical components.

PARTS LIST

× New Parts

Parts without Parts No. are not supplied.

Les articles non mentionnés dans le Parts No. ne sont pas fournis.

Teile ohne Parts No. werden nicht geliefert.

Ref. No. 参照番号	Address 位置	New Parts 新	Parts No. 部品番号	Description 部品名 / 規格	Desti- nation 仕 向	Re- marks 備考
R209 R211, 212 R213 R214 R215			RD14AB2E472JTS RD14AB2E472JTS RS14DB3D101JTE RS14DB3D331JTE RD14AB2E680JTS	FL-PROOF RD 4.7K J 1/4W FL-PROOF RD 4.7K J 1/4W FL-PROOF RS 100 J 2W FL-PROOF RS 330 J 2W FL-PROOF RD 68 J 1/4W		
R216 R216 R219 R254 R258			RS14DB3A470JTE RS14DB3A560JTE RS14DB3D101JTE RS14DB3A331JTE RS14DB3A331JTE	FL-PROOF RS 47 J 1W FL-PROOF RS 56 J 1W FL-PROOF RS 100 J 2W FL-PROOF RS 330 J 1W FL-PROOF RS 330 J 1W		ELYMXT P
R259 R260 VR1 -4			RS14DB3A332JTE RS14DB3A822JTE R12-1616-05	FL-PROOF RS 3.3K J 1W FL-PROOF RS 8.2K J 1W TRIMMING POT.(1K) IDL		
K1 -6 K7 ,8 K9 K10 K10			S76-0027-05 S51-2092-05 S51-2090-05 S51-2052-05 S76-0015-05	MAGNETIC RELAY MAGNETIC RELAY MAGNETIC RELAY MAGNETIC RELAY MAGNETIC RELAY		P ELYMXT
S2 S4			S40-6035-05 S42-2139-05	PUSH SWITCH CARTRIDGE MC/MM MULTIPLE PUSH SWITCH SPEAKERS		
D1 -6 D1 -6 D7 -10 D7 -10 D31 -34			HSS104A 1SS131 HSS104 1SS133 HSS104	DIODE DIODE DIODE DIODE DIODE		
D31 -34 D37 -48 D37 -48 D49 D49			1SS133 HSS104 1SS133 HZS7.5S(B) RD7.5JS(B)	DIODE DIODE DIODE ZENER DIODE ZENER DIODE		
D50 ,51 D50 ,51 D52 ,53 D52 ,53 D54			HSS104A 1SS131 HZS5.1S(B2) RD5.1JS(B2) HZS7.5S(B)	DIODE DIODE ZENER DIODE ZENER DIODE ZENER DIODE		
D54 D55 D55 D56 D56			RD7.5JS(B) HZS15S(B) RD15JS(B) HZS7.5S(B) RD7.5JS(B)	ZENER DIODE ZENER DIODE ZENER DIODE ZENER DIODE ZENER DIODE		
D57 D57 D58 ,59 D58 ,59 D60 ,61			HZS15S(B) RD15JS(B) HZS30N(B) RD30ES(B) HSS104	ZENER DIODE ZENER DIODE ZENER DIODE ZENER DIODE DIODE		
D60 ,61 D62 -65 D62 -65 D66 D66			1SS133 S5688B 1SR139-100 D5SBA20F03 RBV-602LFA	DIODE DIODE DIODE DIODE DIODE		
D67 ,68 D67 ,68 D69 -72 D69 -72			HSS104A 1SS131 HSS104 1SS133	DIODE DIODE DIODE DIODE		

L:Scandinavia K:USA P:Canada
Y:PX(Far East, Hawaii) T:England E:Europe
Y:AAFES(Europe) X:Australia M:Other Areas

⚠ indicates safety critical components.

PARTS LIST

× New Parts

Parts without Parts No. are not supplied.

Les articles non mentionnes dans le Parts No. ne sont pas fournis.

Teile ohne Parts No. werden nicht geliefert.

Ref. No. 参照番号	Address 位置	New Parts 新	Parts No. 部品番号	Description 部品名/規格	Desti- nation 仕向	Re- marks 備考
IC1			NJM4565D-D	IC(OP AMP X2)		
IC2 -5			LC4966	IC(CMOS LOGIC BILATERAL SW)		
IC6			NJM4565D-D	IC(OP AMP X2)		
IC7			UPC1237HA	IC(POWER AMP)		
IC8			TA7805S	IC(VOLTAGE REGULATOR/ +5V)		
IC8			UPC7805AHF	IC(VOLTAGE REGULATOR/ +5V)		
Q1 -4			2SK170(BL)	FET		
Q1 -4			2SK170(V)	FET		
Q5 -8			2SA1124(R, S)	TRANSISTOR		
Q9 ,10			2SC2632(R, S)	TRANSISTOR		
Q11 ,12		*	2SJ313	FET		
Q13 ,14		*	2SK2013	FET		
Q19 ,20			2SA992(F, E)	TRANSISTOR		
Q21 ,22			2SC1845(F, E)	TRANSISTOR		
Q23 -26			2SC2878(B)	TRANSISTOR		
Q41 ,42			2SC4137F19(V, W)	TRANSISTOR		
Q43 ,44			2SB1162BD*5	TRANSISTOR		
Q45 ,45			2SD1717BD*5	TRANSISTOR		
Q51 -56			DTC143TS	DIGITAL TRANSISTOR		
Q51 -56			UN4216	TRANSISTOR		
Q57			2SA992(F, E)	TRANSISTOR		
Q58			DTA124ES	DIGITAL TRANSISTOR		
Q58			UN4112	TRANSISTOR		
Q59			DTC143TS	DIGITAL TRANSISTOR		
Q59			UN4216	TRANSISTOR		
Q61 -68			DTA124ES	DIGITAL TRANSISTOR		
Q61 -68			UN4112	TRANSISTOR		
Q69 -76			DTC124ES	DIGITAL TRANSISTOR		
Q69 -76			UN4212	TRANSISTOR		
Q77			2SA992(F, E)	TRANSISTOR		
Q78 ,79			2SA1110(Q, R)	TRANSISTOR		
Q80			2SC2458(Y, GR)	TRANSISTOR		
Q80			2SC3311A(Q, R)	TRANSISTOR		
Q81 -83			2SD2012	TRANSISTOR		
Q81 -83			2SD2061(E, F)	TRANSISTOR		
Q84			2SB1370(E, F)	TRANSISTOR		
Q84			2SB1375	TRANSISTOR		
CONTROL UNIT (X11-340X-XX)						
D14 -22			B30-1291-05	LED (LN21CPSLX(V)-(TA4))		
D33			B30-1290-05	LED (LN21RCASLX(U)-(TA4))		
C1 ,2			CF92FV1H334J	MF 0.33UF J		
C3 -8			CF92FV1H101K	MF 100PF K		
C9 -12			CF92FV1H334J	MF 0.33UF J		
C13 -16			CE04KW1V100M	ELECTRO 10UF 35WV		
C17 -20			CF92FV1H223J	MF 0.022UF J		
C21 ,22			CE04KW1H010M	ELECTRO 1.0UF 50WV		
C23 ,24			CF92FV1H561J	MF 560PF J		
C25 ,26			CF92FV1H101K	MF 100PF K		
C27 ,28			CF92FV1H331K	MF 330PF K		
C29 ,30			CF92FV1H683J	MF 0.068UF J		
C51 ,52			CE04KW1H3R3M	ELECTRO 3.3UF 50WV		
C53 ,54			CF92FV1H101K	MF 100PF K		
C55 ,56			CF92FV1H122J	MF 1200PF J		
C57 -60			CF92FV1H102J	MF 1000PF J		

L:Scandinavia K:USA P:Canada
Y:PX(Far East, Hawaii) T:England E:Europe
Y:AAFES(Europe) X:Australia M:Other Areas

△ indicates safety critical components.

PARTS LIST

× New Parts

Parts without Parts No. are not supplied.

Les articles non mentionnes dans le Parts No. ne sont pas fournis.

Teile ohne Parts No. werden nicht geliefert.

Ref. No. 参照番号	Address 位置	New Parts 新	Parts No. 部品番号	Description 部品名/規格	Desti- nation 仕向	Re- marks 備考
C61 ,62			CF92FV1H221K	MF 220PF K		
C63 -66			CE04KW1V470M	ELECTRO 47UF 35WV		
C67 ,68			CE04KW1C221M	ELECTRO 220UF 16WV		
C69 ,70			CF92FV1H471J	MF 470PF J		
C71 ,72			CF92FV1H102J	MF 1000PF J		
C73 ,74			C90-1917-05	ELECTRO 100UF 16WV		
C75 ,76			CC45FSL2H390J	CERAMIC 39PF J		
C77 -80			CF92FV1H151K	MF 150PF K		
C81 ,82			CF92FV1H103J	MF 0.010UF J		
C83 ,84			CF92FV1H101K	MF 100PF K		
C102			CF92FV1H471J	MF 470PF J		
C103			CE04KW1H100M	ELECTRO 10UF 50WV		
C104			C90-1827-05	BACKUP 0.047F 5.5WV		
C105,106			CF92FV1H332J	MF 3300PF J		
C107			CF92FV1H223J	MF 0.022UF J		
C108			CF92FV1H103J	MF 0.010UF J		
C109			CE04KW1H4R7M	ELECTRO 4.7UF 50WV		
C110			CE04KW1H010M	ELECTRO 1.0UF 50WV		
C111,112			CE04DW1E331M	ELECTRO 330UF 25WV		
C113,114			CE04KW1E470M	ELECTRO 47UF 25WV		
C116,117			CF92FV1H103J	MF 0.010UF J		
C124			CE04KW1A221M	ELECTRO 220UF 10WV		
C126,127			CE04KW1H100M	ELECTRO 10UF 50WV		
C135			CE04HW1E100M	NP-ELEC 10UF 25WV		
C138			CE04KW1H100M	ELECTRO 10UF 50WV		
C141			CE04KW1H4R7M	ELECTRO 4.7UF 50WV		
C142			CE04KW1V4R7M	ELECTRO 4.7UF 35WV		
△ C201			C91-1439-05	FILM 0.01UF 250VAC		
△ C202			C91-1444-05	MF 0.047UF 250VAC		
△ C215,216			CF92FV1H103J	MF 0.010UF J		
C217			CK45FB1H152K	CERAMIC 1500PF K		
CN7	2B		E40-4553-05	FLAT CABLE CONNECTOR		
△ J1			E03-0143-05	AC OUTLET		ELM
△ J2		*	E03-0142-05	AC OUTLET		PY
△ J4 ,5			E03-0109-05	AC OUTLET		T
△ F1			F04-5022-05	FUSE (UL) (125V 5A UL)		P
△ F1			F05-2525-05	FUSE (SEMKO) (250V T2.5A)		ELXT
△ F1 ,2			F05-2525-05	FUSE (SEMKO) (250V T2.5A)		YM
△ F3			F05-2525-05	FUSE (SEMKO) (250V T2.5A)		EL
CN1 -4			J13-0075-05	FUSE CLIP		YM
CN1 ,2			J13-0075-05	FUSE CLIP		ELPXT
CN5 ,6			J13-0075-05	FUSE CLIP		EL
L1 ,2			L40-1021-14	SMALL FIXED INDUCTOR(1.0MH,K)		
L42			L40-1021-14	SMALL FIXED INDUCTOR(1.0MH,K)		
X1			L78-0267-05	RESONATOR (4.194MHZ)		
R113,114			RS14DB3D222JTE	FL-PROOF RS 2.2K J 2W		
R160			RS14DB3A470JTE	FL-PROOF RS 47 J 1W		
R241			RD14AB2E680JTS	FL-PROOF RD 68 J 1/4W		
R283,284			RN14BK2E1100FTS	RN 110.0 F 1/4W		
R285,286			RN14BK2E1502FTS	RN 15.0K F 1/4W		
VR1			R06-5191-05	POTENTIOMETER BALANCE		
VR2 ,3			R06-3061-05	POTENTIOMETER BASS/TREBLE		
VR4			R29-5058-05	POTENTIOMETER MASTER VR		

L:Scandinavia K:USA P:Canada
Y:PX(Far East, Hawaii) T:England E:Europe
Y:AAFES(Europe) X:Australia M:Other Areas

△ indicates safety critical components.

PARTS LIST

× New Parts
 Parts without Parts No. are not supplied.
 Les articles non mentionnes dans le Parts No. ne sont pas fournis.
 Teile ohne Parts No. werden nicht geliefert.

Ref. No. 参照番号	Address 位置	New Parts 新	Parts No. 部品番号	Description 部品名/規格	Desti- nation 仕向	Re- marks 備考
△ K1			S76-0009-05	MAGNETIC RELAY	YM	
S7			S31-2322-05	SLIDE SWITCH VOLTAGE SELECTOR		
S11			S60-0010-05	ROTARY SWITCH REC OUT SELECTOR		
S12 -15			S40-1064-05	PUSH SWITCH DIR, MUT, LOUD, POW		
S10			T99-0521-05	ROTARY ENCODER INPUT SELECTOR		
D10 ,11			HSS104	DIODE		
D10 ,11			1SS133	DIODE		
D13			HSS104	DIODE		
D13			1SS133	DIODE		
D23			HZS2.7N(B)	ZENER DIODE		
D23			RD2.7ES(B)	ZENER DIODE		
D34 -41			HSS104	DIODE		
D34 -41			1SS133	DIODE		
D43 ,44			HZS16N(B)	ZENER DIODE		
D43 ,44			RD16ES(B)	ZENER DIODE		
D52 ,53			HSS104	DIODE		
D52 ,53			1SS133	DIODE		
D54			HSS104A	DIODE		
D54			1SS131	DIODE		
D57 ,58			HSS104	DIODE		
D57 ,58			1SS133	DIODE		
D60			HSS104	DIODE		
D60			1SS133	DIODE		
D61 ,62			E-102	CONSTANT CURRENT DIODE		
D63 -68			HZS5.1S(B)	ZENER DIODE		
D63 -68			RD5.1JS(B)	ZENER DIODE		
D69 ,70			E-501	CONSTANT CURRENT DIODE		
IC1			NJM4565D-D	IC(OP AMP X2)		
IC2			PST529D	IC(SYSTEM RESET)		
IC3			UPD75104GF-778	IC(4BIT MICROPROCESSOR)		
IC4			NJU7312L	IC(ANALOG SWITCH)		
IC5			TA8409S	IC(MOTOR CONTROL)		
Q1 ,2			2SC2878(B)	TRANSISTOR		
Q10			2SC2458(Y,GR)	TRANSISTOR		
Q10			2SC3311A(Q,R)	TRANSISTOR		
Q11 -18			2SC1845(F,E)	TRANSISTOR		
Q19 ,20			2SC2458(Y,GR)	TRANSISTOR		
Q19 ,20			2SC3311A(Q,R)	TRANSISTOR		
Q21 -24			2SA1048(Y,GR)	TRANSISTOR		
Q21 -24			2SA1309A(Q,R)	TRANSISTOR		
Q25 ,26			2SA992(F,E)	TRANSISTOR		
Q51			DTA124ES	DIGITAL TRANSISTOR		
Q51			UN4112	TRANSISTOR		
Q52			DTC124ES	DIGITAL TRANSISTOR		
Q52			UN4212	TRANSISTOR		
Q53			2SC2458(Y,GR)	TRANSISTOR		
Q53			2SC3311A(Q,R)	TRANSISTOR		
Q55			2SA1048(Y,GR)	TRANSISTOR		
Q55			2SA1309A(Q,R)	TRANSISTOR		
A1			W02-1046-05	ELECTRIC CIRCUIT MODULE REM		

L:Scandinavia K:USA P:Canada
 Y:PX(Far East, Hawaii) T:England E:Europe
 Y:AAFES(Europe) X:Australia M:Other Areas

△ indicates safety critical components.

SPECIFICATIONS

For U.S.A. and Canada

Continuous rated power output (FTC)

60 watts per channel minimum RMS, both channels driven, at 8 Ω from 20 Hz to 20,000 Hz with no more than 0.06% total harmonic distortion.

Dynamic power 90 W (8 Ω)
 120 W (4 Ω)

Damping factor 200 (50 Hz)
 Total harmonic distortion 0.06%
 (20 Hz ~ 20,000 Hz, 60 W, 8 Ω)

..... 0.02%
 (1 kHz, 60 W, 8 Ω)

Intermodulation distortion 0.02% (60 W, 8 Ω)
 (70 Hz : 7 kHz = 4 : 1)

Frequency response(IHF '78)
 TUNER/AUX/TAPE1, 2/CD
 5 Hz ~ 100 kHz, +0 dB, -3 dB

PHONO 'RIAA' response 20 Hz ~ 20 kHz,
 +0.3 dB, -0.3 dB

Maximum input level
 PHONO (MM) 120 mV, 0.05% T.H.D. at 1 kHz
 PHONO (MC) 10 mV, 0.05% T.H.D. at 1 kHz

Signal to noise ratio
 PHONO (MM) 87 dB (IHF '66)
 79 dB (IHF '78)

PHONO (MC) 67 dB (IHF '66)
 74 dB (IHF '78)
 TUNER/AUX/TAPE1, 2/CD 104 dB (IHF '66)
 80 dB (IHF '78)

Input sensitivity/impedance
 PHONO (MM) 2.5 mV/47 kΩ
 PHONO (MC) 0.2 mV/100 Ω
 TUNER/AUX/TAPE1, 2/CD 200 mV/47 kΩ

Tone control
 BASS ±10 dB (at 100 Hz)
 TREBLE ±10 dB (at 10 kHz)

Loudness control
 (VOLUME at -30 dB level) +6 dB (100 Hz)
 +3 dB (10 kHz)

Output level/impedance
 TAPE REC 200 mV/1 kΩ

General

Power consumption
 For Canada 2.5 A
 For U.S. Military 220 W

AC outlets
 For Canada
 SWITCHED 3; (Total 200 W, 1.6 A max.)
 For U.S. Military
 SWITCHED 3; (Total 200 W max.)

Dimensions W: 440 mm (17-5/16")
 H: 137 mm (5-3/8")
 D: 345 mm (13-9/16")

Weight (net) 8.5 kg (18.7 lb)

For U.K. and Europe

Continuous rated power output

(DIN) 1 kHz, at 8 Ω 70 W + 70 W
 at 4 Ω 90 W + 90 W
 (IEC/NF) From 63 Hz to 12,500 Hz, 0.7% T.H.D.

at 8 Ω 70 W + 70 W
 at 4 Ω 90 W + 90 W

Dynamic power 90 W (8 Ω)
 120 W (4 Ω)

Damping factor 200 (50 Hz)
 Total harmonic distortion 0.06%
 (20 Hz ~ 20,000 Hz, 60 W, 8 Ω)

..... 0.02%
 (1 kHz, 60 W, 8 Ω)

Intermodulation distortion 0.02% (60 W, 8 Ω)
 (70 Hz : 7 kHz = 4 : 1)

Frequency response (IHF '78)
 TUNER/AUX/TAPE1, 2/CD
 5 Hz ~ 100 kHz, +0 dB, -3 dB

PHONO 'RIAA' response 20 Hz ~ 20 kHz,
 +0.3 dB, -0.3 dB

Maximum input level
 PHONO (MM) 120 mV, 0.05% T.H.D. at 1 kHz
 PHONO (MC) 10 mV, 0.05% T.H.D. at 1 kHz

Signal to noise ratio
 PHONO (MM) 87 dB (IHF '66)
 79 dB (IHF '78)

PHONO (MC) 67 dB (IHF '66)
 74 dB (IHF '78)
 TUNER/AUX/TAPE1, 2/CD 104 dB (IHF '66)
 80 dB (IHF '78)

PHONO (MM) 58 dB (DIN, 50 mW output)
 TUNER/AUX/TAPE1, 2/CD
 59 dB (DIN, 50 mW output)

Input sensitivity/impedance
 PHONO (MM) 2.5 mV/47 kΩ
 PHONO (MC) 0.2 mV/100 Ω
 TUNER/AUX/TAPE1, 2/CD 200 mV/47 kΩ

Tone control
 BASS ±10 dB (at 100 Hz)
 TREBLE ±10 dB (at 10 kHz)

Loudness control
 (VOLUME at -30 dB level) +6 dB (100 Hz)
 +3 dB (10 kHz)

General

Output level/impedance
 TAPE REC 200 mV/1 kΩ

Power consumption 220 W (IEC)
 AC outlets
 For U.K.
 SWITCHED 2; (Total 200 W max.)

For Europe
 SWITCHED 3; (Total 200 W max.)

Dimensions W: 440 mm
 H: 137 mm
 D: 345 mm

Weight (net) 8.5 kg

KA-4050R

SPECIFICATIONS

For other countries

Continuous rated power output

(IHF '66) From 20 Hz to 20,000 Hz 0.06% T.H.D.

at 8 Ω 60 W + 60 W

(IEC/NF) From 63 Hz to 12,500 Hz, 0.7% T.H.D.

at 8 Ω 70 W + 70 W

at 4 Ω 90 W + 90 W

Dynamic power 90 W (8 Ω)
120 W (4 Ω)

Damping factor 200 (50 Hz)

Total harmonic distortion 0.06%

(20 Hz ~ 20,000 Hz, 60 W, 8 Ω)

..... 0.02%

(1 kHz, 60 W, 8 Ω)

Intermodulation distortion 0.02% (60 W, 8 Ω)

(70 Hz : 7 kHz = 4 : 1)

Frequency response (IHF '78)

TUNER/AUX/TAPE1, 2/CD

..... 5 Hz ~ 100 kHz, +0 dB, -3 dB

PHONO 'RIAA' response 20 Hz ~ 20 kHz,

+0.3 dB, -0.3 dB

Maximum input level

PHONO (MM) 120 mV, 0.05% T.H.D. at 1 kHz

PHONO (MC) 10 mV, 0.05% T.H.D. at 1 kHz

Signal to noise ratio

PHONO (MM) 87 dB (IHF '66)

79 dB (IHF '78)

PHONO (MC) 67 dB (IHF '66)

74 dB (IHF '78)

TUNER/AUX/TAPE1, 2/CD 104 dB (IHF '66)

80 dB (IHF '78)

Input sensitivity/impedance

PHONO (MM) 2.5 mV/47 k Ω

PHONO (MC) 0.2 mV/100 Ω

TUNER/AUX/TAPE1, 2/CD 200 mV/47 k Ω

Tone control

BASS ± 10 dB (at 100 Hz)

TREBLE ± 10 dB (at 10 kHz)

Loudness control

(VOLUME at -30 dB level) +6 dB (100 Hz)

+3 dB (10 kHz)

Output level/impedance

TAPE REC 200 mV/1 k Ω

General

Power consumption 220 W

AC outlet

For Australia

SWITCHED 1; (200 W max.)

For other countries

SWITCHED 3; (Total 200 W max.)

Dimensions W: 440 mm

H: 137 mm

D: 345 mm

Weight (net) 8.5 kg

Note:

KENWOOD follows a policy of continuous advancements in development. For this reason specifications may be change without notice.

KENWOOD CORPORATION

Alive Mitake, 2-5, 1-chome Shibuya, Shibuya-ku, Tokyo 150, Japan

KENWOOD U.S.A. CORPORATION

P.O. BOX 22745, 2201 East Dominguez St., Long Beach, CA 90810 U.S.A.

550 Clark Drive, Mount Olive, New Jersey 07828, U.S.A.

99-994 Iwaena St. Aea, Hawaii 96701

KENWOOD ELECTRONICS CANADA INC.

6070 Kestrel Road, Mississauga, Ontario, Canada L5T 1S8

KENWOOD ELECTRONICS LATIN AMERICA S.A.

P.O. BOX 55-2791, Piso 6 Plaza Chase, Ci. 47 y Aquilino de la Guardia, Panama, Republic de Panama

TRIO-KENWOOD U.K. LIMITED

KENWOOD House, Dwight Road, Watford, Herts, WD1 8EB United Kingdom

KENWOOD ELECTRONICS BENELUX N.V.

Mechelsesteenweg 418 B-1930 Zaventem, Belgium

KENWOOD ELECTRONICS DEUTSCHLAND GMBH

Rembrücker Str. 15, 6056 Heusenstamm, Germany

TRIO-KENWOOD FRANCE S.A.

13 Boulevard Ney, 75018 Paris, France

KENWOOD LINEAR S.p.A.

20125, Milano-Via Arbe, 50, Italy

KENWOOD ESPAÑA S.A.

Bolivia, 239-08020 Barcelona, Spain

KENWOOD ELECTRONICS AUSTRALIA PTY. LTD. (A.C.N. 001 499 074)

P.O. BOX 504, 8 Figtree Drive, Australa Centre, Homebush, N.S.W. 2140, Australia

KENWOOD & LEE ELECTRONICS, LTD.

Unit 3712-3724, Level 37 Tower 1, Metroplaza, 223 Hing Fong Road, Kwai Fong N.T. Hong Kong

KENWOOD ELECTRONICS SINGAPORE PTE LTD

No. 1 Genting Lane # 07-00, Singapore, 1334

Kenwood follows a policy of continuous advancements in development.

For this reason specifications may be changed without notice.

Kenwood poursuit une politique de progrès constants en ce qui concerne le développement.

Pour cette raison, les spécifications sont sujettes à modifications sans préavis.

Kenwood strebt ständige Verbesserungen in der Entwicklung an.

Daher bleiben Änderungen der technischen Daten jederzeit vorbehalten.