

HIGH SPEED DC STEREO INTEGRATED AMPLIFIER

KA-80

(X09-1420-11) (A/B)

F

G

H

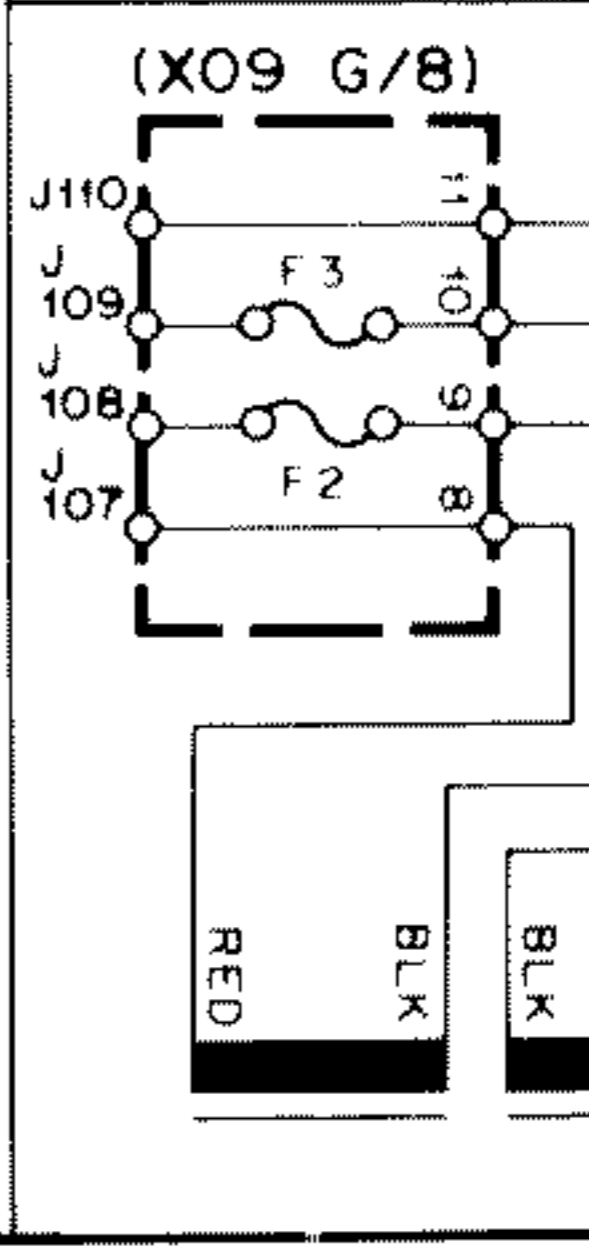
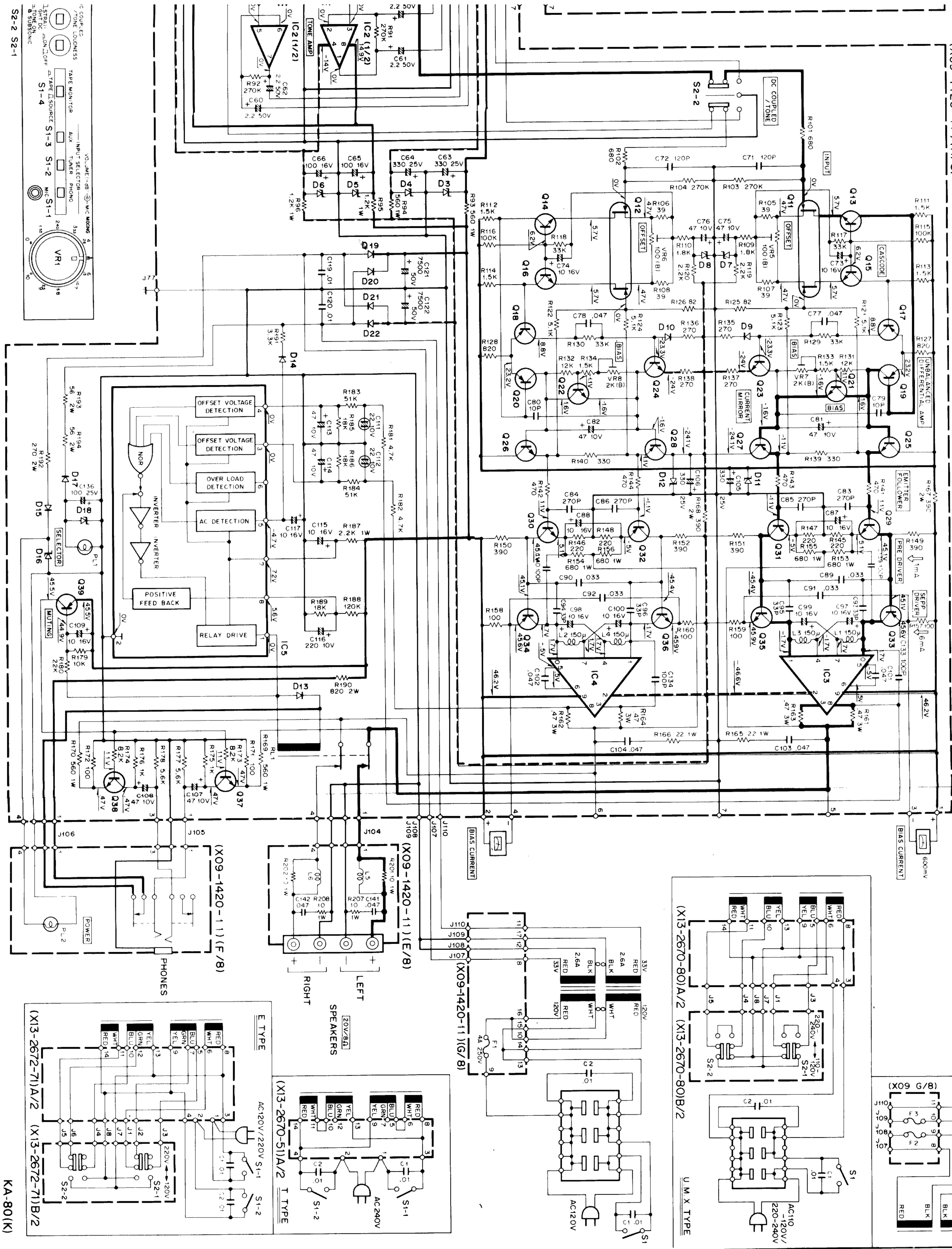
I

J

K

L

SECONDARY EXCEPT J.P.K.



SPECIFICATIONS

Power output
48 watts per channel minimum RMS, both channels driven, at 8 ohms from 20Hz to 20,000Hz with no more than 0.02% total harmonic distortion.
 Both Channels Driven 50 + 50 watts 8 ohms at 1,000 Hz
 55 + 55 watts 4 ohms at 1,000 Hz

Total Harmonic Distortion
 (20 Hz to 20,000 Hz)
 AUX input to SPEAKER 0.02% at rated power into 8 ohms
 0.015% at 1/2 rated power into 8 ohms

PHONO input to SPEAKER
 output 0.02% at rated power with VOLUME
 -20 dB

Intermodulation Distortion 0.0065% at rated power into 8 ohms
 (60 Hz : 7 kHz = 4 : 1)
Damping Factor 120, DC -20,000 Hz into 8 ohms

Transient Response
 Rise Time 0.8 μs
 Slew Rate ±150 V/μs

Power Bandwidth 5 Hz to 40,000 Hz at 0.05% T.H.D.
Frequency Response
 (DC COUPLED at ON) DC to 450 kHz, -3 dB
 (DC COUPLED at OFF) 18 Hz to 100 kHz, -3 dB

Speaker Impedance Accept 4 ohms to 16 ohms
Input Sensitivity/Impedance
 Phono 150 mV/50 kohms
 Tuner, AUX, Tape 2.5 mV/50 kohms

Signal to Noise Ratio (HF: A)
 Phono 86 dB for 2.5 mV input
 92 dB for 5.0 mV input
 106 dB for 150 mV input
 230 mV (RMS), T.H.D. 0.02% at 1,000 Hz

Tuner, AUX, Tape
 Phono Maximum Input Level 106 dB for 150 mV input
 at 1,000 Hz

Output Level/Impedance
 Tape REC (Pin) 150 mV/220 ohms
 (DIN) 30 mV/75 kohms
 Phono Frequency Response RIAA standard curve ±0.3 dB
 (20 Hz to 20,000 Hz)

Tone Control
 Bass ±10 dB at 100 Hz
 Treble ±10 dB at 10 kHz
 Loudness Control +9 dB at 100 Hz
 (at -30 dB VOLUME Level)
 Subsonic Filter 18 Hz/6 dB

GENERAL
Power Requirement 60 Hz 120V (U.S.A. & Canada Model) or 50/60 Hz 110-120V/220-240V, switchable

Power Consumption 450 watts at full power
 A.C. Outlet Switched 2, Unswitched 1
Dimensions W 440 mm (17-5/16")
 H 78 mm (3-1/16")
 D 330 mm (13")

Weight (Net) 7.9 kg (17.4 lbs)

Kenwood follows a policy of continuous advancements in development. For this reason specifications may be changed without notice.
 Kenwood strebt ständige Verbesserungen in der Entwicklung an. Daher bleiben Änderungen der technischen Daten jederzeit vorbehalten.
 Kenwood poursuit une politique de progrès constants en ce qui concerne le développement. Pour cette raison, les spécifications sont sujettes à modifications sans préavis.

