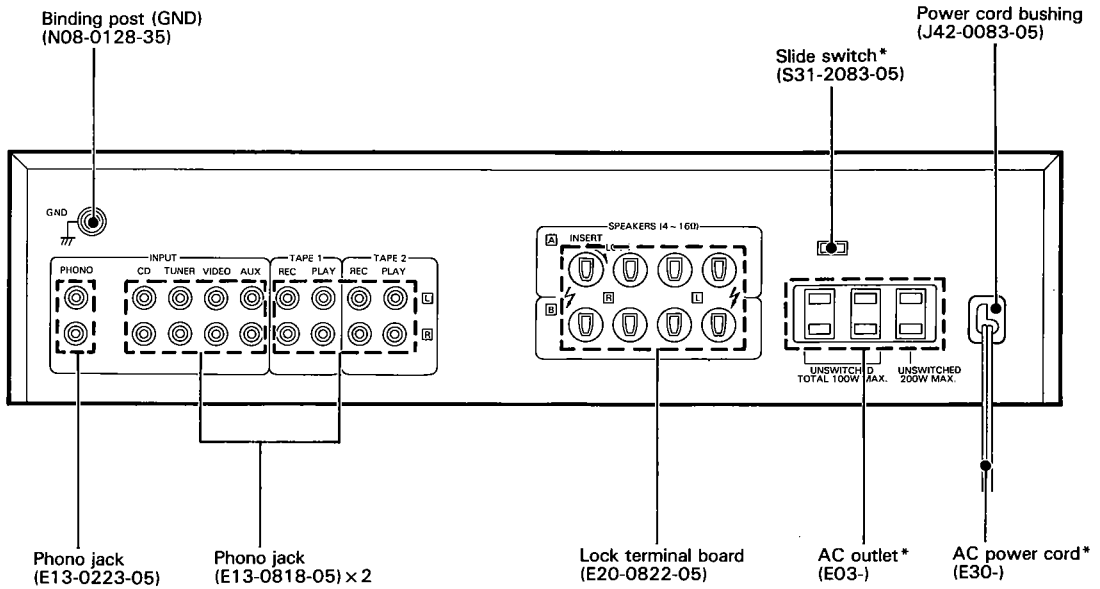
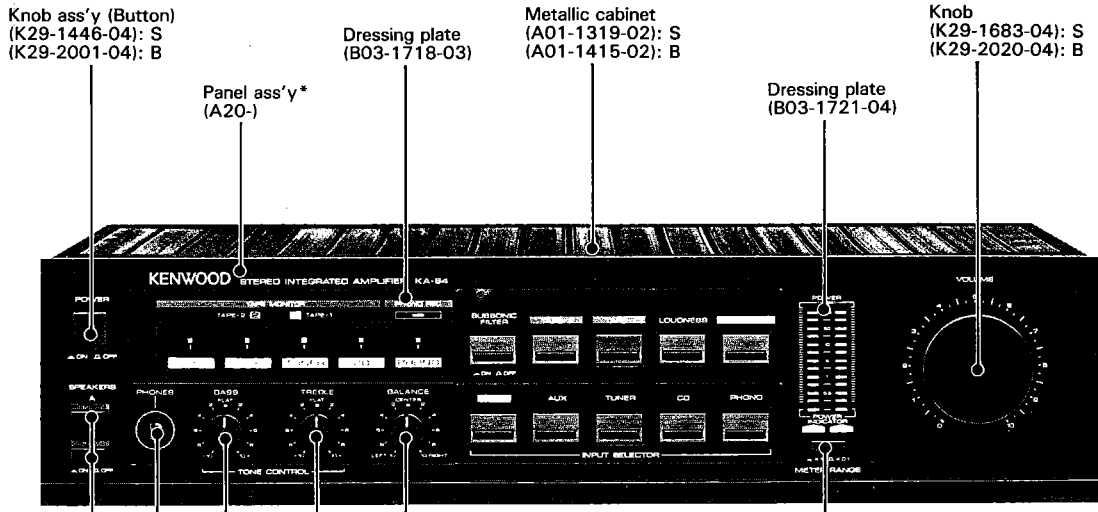


KENWOOD

KA-94

STEREO INTEGRATED AMPLIFIER

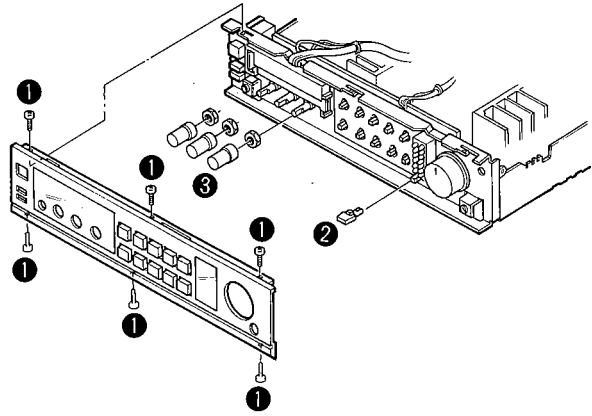
SERVICE MANUAL



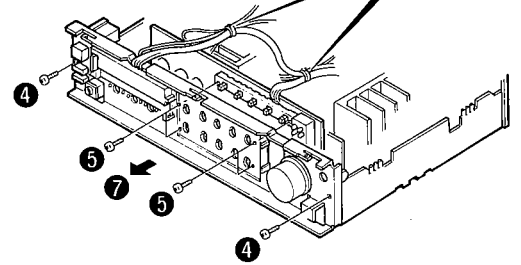
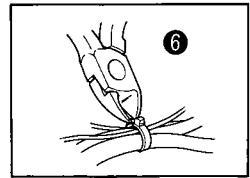
* Refer to Parts List on page 6.
Photo is KA-94 (Black version).
S: Silver version
B: Black version

DISASSEMBLY FOR REPAIR

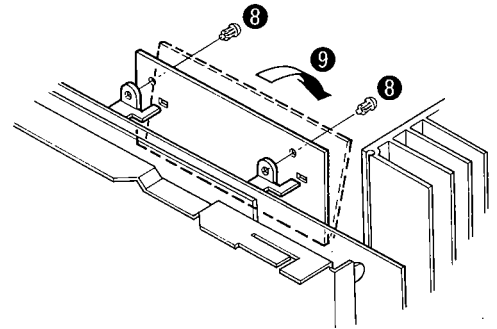
1. Remove the metallic case and remove 6 screws retaining the panel assembly (1).
2. Remove the panel assembly and pull off the BASS, TREBLE, BALANCE, METER RANGE knobs (2, 3).



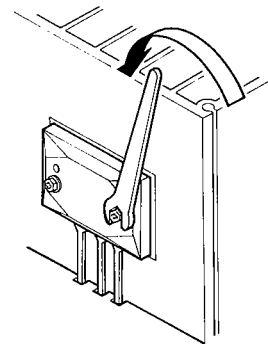
3. Remove 2 screws at the ends of the sub panel and 4 screws retaining the switches (4, 5).
4. Cut the wire bands bonding the lead wires with a wire cutter (6). Pull the sub panel frontward and then components on pc board can be replaced (7).



5. For repair of X07 (B/4) pc board, remove 2 push rivets and tilt it toward the rear (8, 9).

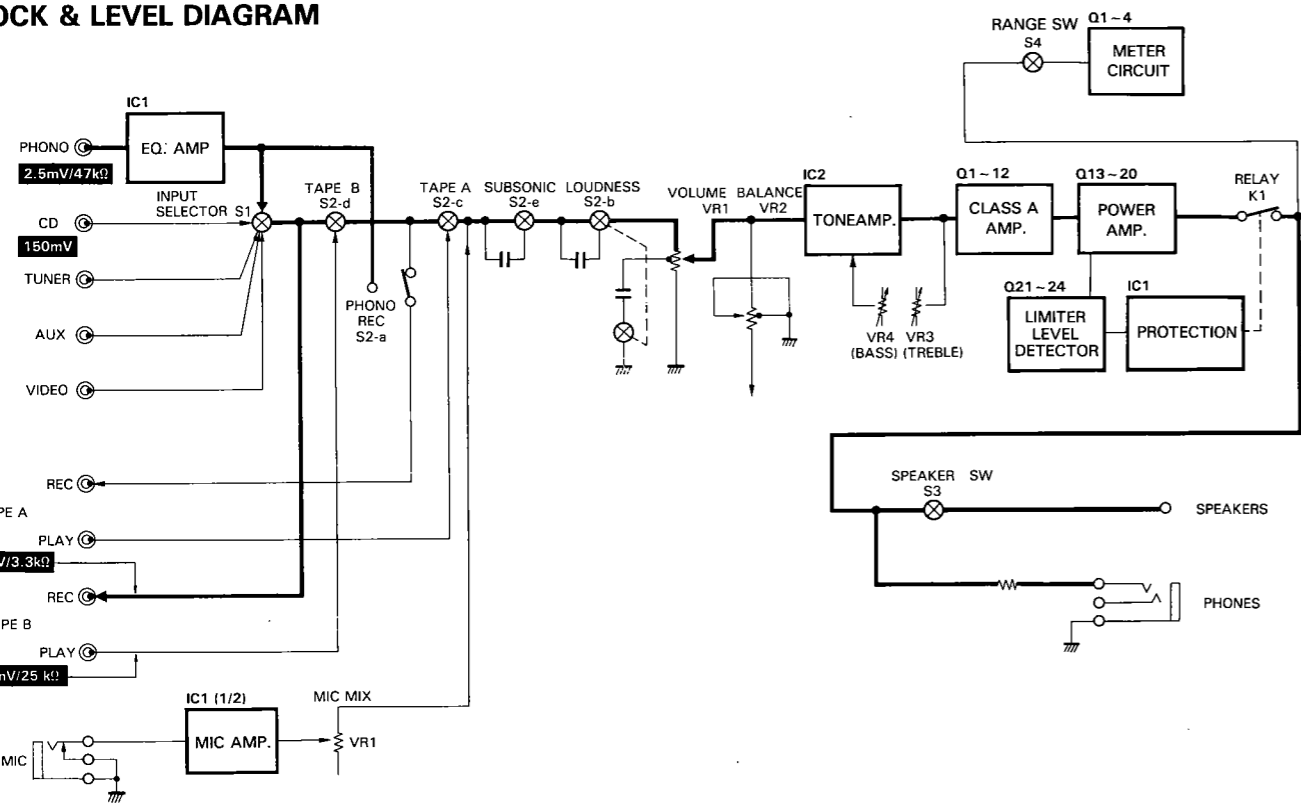


6. For replacement of power transistors, use a hex-wrench (W05-0022-00) (10).



BLOCK & LEVEL DIAGRAM/CIRCUIT DESCRIPTION

BLOCK & LEVEL DIAGRAM



CIRCUIT DESCRIPTION

Component function Control unit (X11-2110-10)

Components	Functions	Operations
	EQ amp	
	TONE amp	
- Q4	Meter circuit	Rectifies the main amp output and is controlled by the range select switch.
	AVR	For backlight lamp

Power amp unit (X07-2210-10)

Components	Functions	Operations
- Q4	1st stage differential amp	Class A amp
- Q8	2nd stage differential amp	Class A amp
- Q12	Class A amp	
3 - Q16	Driver amp	
7 - Q20	Power amp	
1 - Q24	Level detection	Operates as a current limiter for final protection in overload drive.
7	AVR	For Class A amp
8 - Q41	AVR	
3, Q44	BIAS amp	
	Protection IC	Operates when amp malfunctions Relay OFF.

ADJUSTMENT/REGLAGES/ABGLEICH

ADJUSTMENT

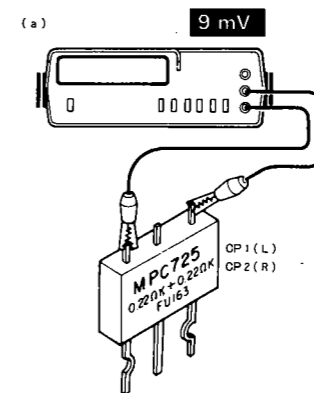
No.	ITEM	INPUT SETTINGS	OUTPUT SETTINGS	AMPLIFIER SETTINGS	ALIGNMENT POINTS	ALIGN FOR	FIG.
Set the controls and switches as follows: POWER: ON SPEAKER: B							
1	IDLE CURRENT	-	Connect a DC voltmeter across CP1 (L) CP2 (R)	VOLUME: 0	VR1 (L) VR2 (R)	9mV	(a)

REGLAGES

N°	ITEM	REGLAGE DE L'ENTREE	REGLAGE DE LA SORTIE	REGLAGE DE L'AMPLIFICATEUR	POINTS L'ALIGNEMENT	ALIGNER POUR	FIG.
Régler les controles et les boutons comme suit: POWER: ON SPEAKER: B							
1	COURANT DE POLARISATION	-	Connecter un voltmètre de CC sur CP1 (G) CP2 (D)	VOLUME: 0	VR1 (G) VR2 (D)	9mV	(a)

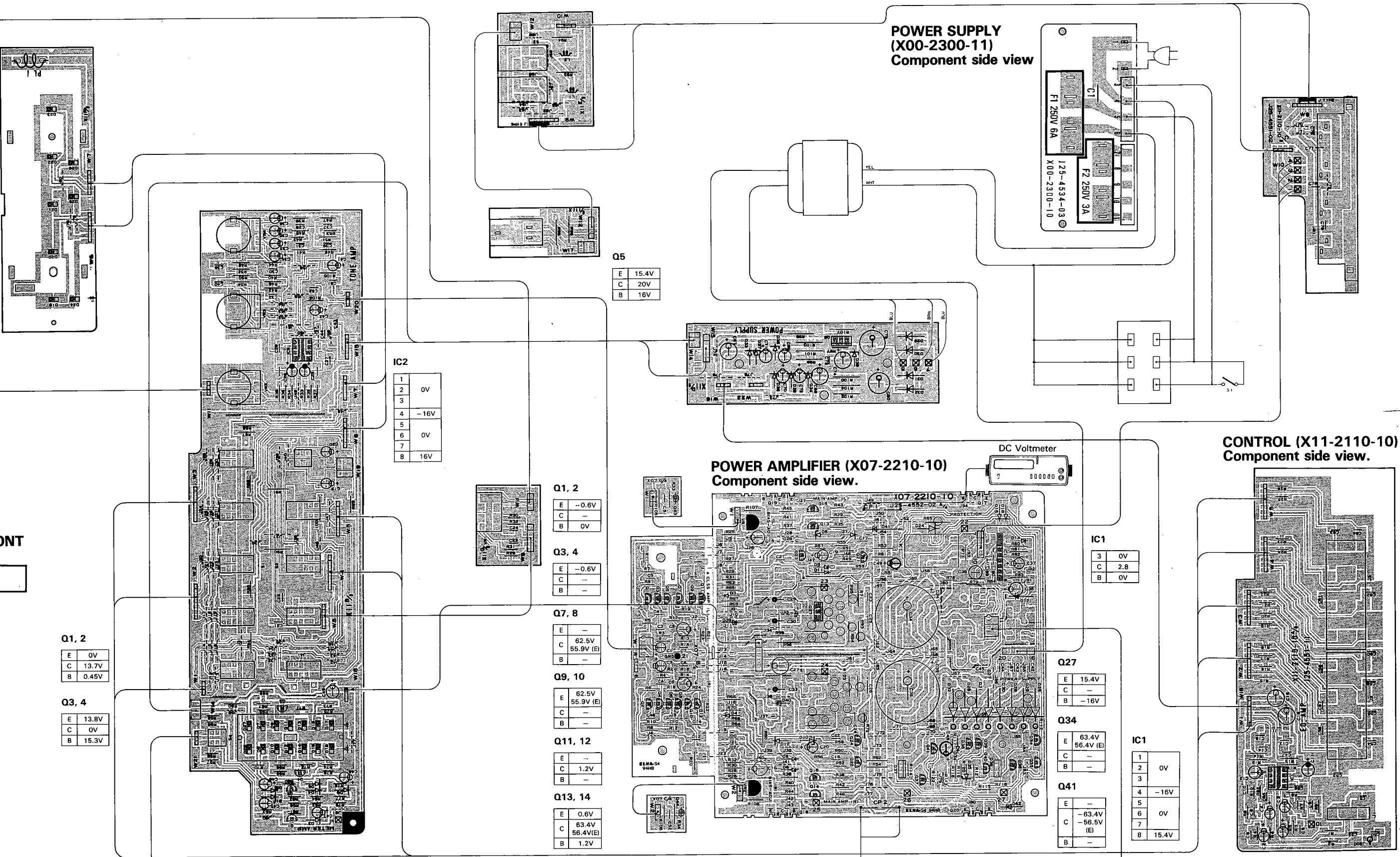
ABGLEICH

NR.	GEGENSTAND	EINGANGS-EINSTELLUNG	AUSGANGS-EINSTELLUNG	VORSTÄRKER EINSTELLUNG	ABGLEICH-PUNKTE	ABGLEICHEN FÜR	ABB.
Die Regler und Knöpfe wird folgt einstellen: POWER: ON SPEAKER: B							
1	LEERLAUFSTROM	-	Einen Gleichspannungsmesser über CP1 (L) CP2 (R) anschließen	VOLUME: 0	VR1 (L) VR2 (R)	9mV	(a)

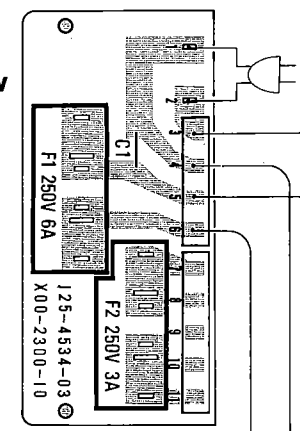


KA-94 KA-94

PC BOARD



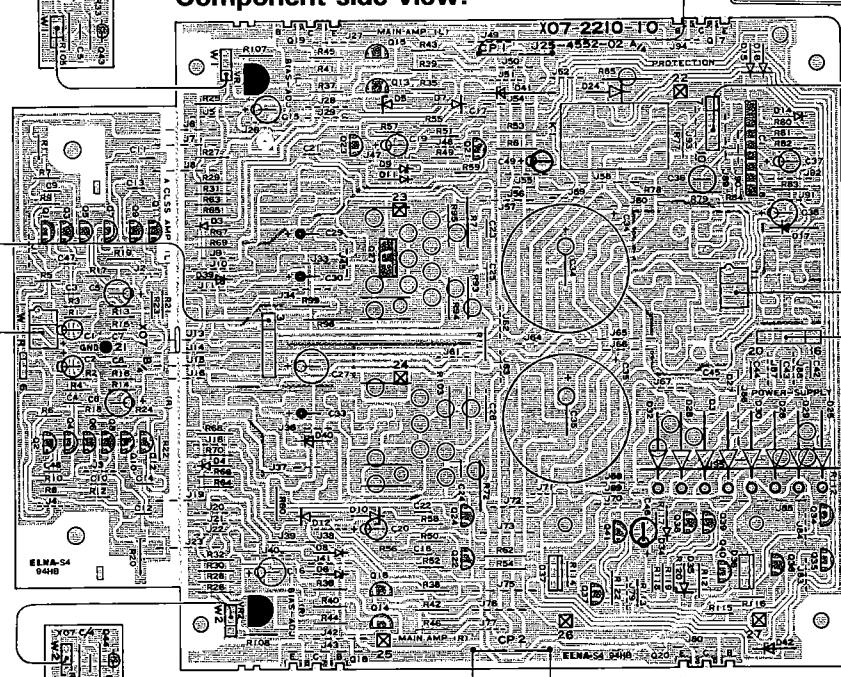
POWER SUPPLY (X00-2300-11)
Component side view



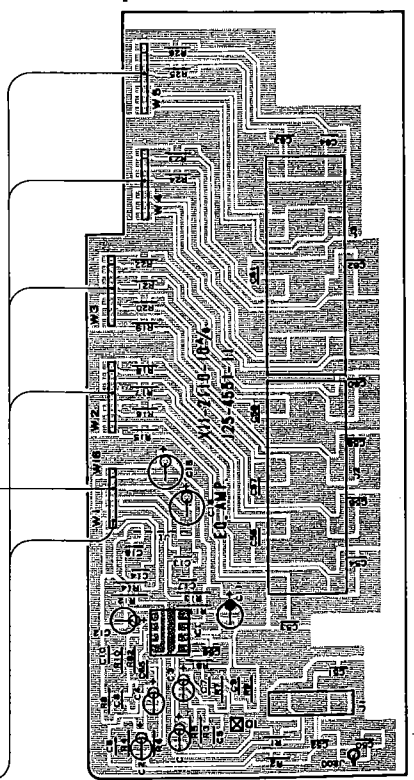
Q5

E	15.4V
C	20V
B	16V

POWER AMPLIFIER (X07-2210-10)
Component side view.



CONTROL (X11-2110-10)
Component side view.



IC2

1	
2	0V
3	
4	-16V
5	
6	0V
7	
8	16V

Q1, 2

E	-0.6V
C	-
B	0V

Q3, 4

E	-0.6V
C	-
B	-

Q7, 8

E	-
C	62.5V
B	55.9V (E)

Q9, 10

E	62.5V
C	55.9V (E)
B	-

Q11, 12

E	-
C	1.2V
B	-

Q13, 14

E	0.6V
C	63.4V
B	56.4V (E)
	1.2V

IC1

3	0V
C	2.8
B	0V

Q27

E	15.4V
C	-
B	-16V

Q34

E	63.4V
C	56.4V (E)
B	-

Q41

E	-
C	-63.4V
B	-56.5V (E)
	-

IC1

1	
2	0V
3	
4	-16V
5	
6	0V
7	
8	15.4V

Q1, 2

E	0V
C	13.7V
B	0.45V

Q3, 4

E	13.8V
C	0V
B	15.3V

Q15, 16

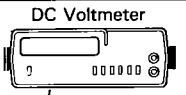
E	-
C	-16.3V
B	-56.5V (E)
	-1.2V

Q17, 18

E	0.6V
C	63.4V
B	56.4V (E)
	-

Q19, 20

E	-
C	-63.4V
B	-56.5V (E)
	-0.6V



Refer to the schematic diagram for the values of resistors and capacitors. The PC board drawing is viewing from the side easy to check.

PARTS LIST

× New Parts

Parts without Parts No. are not supplied.

Les articles non mentionnes dans le Parts No. ne sont pas fournis.

Teile ohne Parts No. werden nicht geliefert.

Ref. No. 参照番号	Address 位置	New Parts 新	Parts No. 部品番号	Description 部品名 / 規格	Desti- nation 仕 向	Re- marks 備考
-		*	H01-5344-04	ITEM CARTON CASE	T	
-		*	H10-1788-04	POLYSTYRENE FOAMED FIXTURE		
-		*	H10-1812-02	POLYSTYRENE FOAMED FIXTURE		
-		*	H10-1813-02	POLYSTYRENE FOAMED FIXTURE		
-			H25-0223-04	PROTECTION BAG (750X350)		
-			H25-0232-04	PROTECTION BAG (235X350)		
17	2B,2C		J02-0161-04	FOOT		
18	2B		J19-0515-05	UNIT HOLDER		
19	2A,2B		J21-3326-05	JACK MOUNTING HARDWARE(PHONES)		
△ 20	1C		J42-0083-05	POWER CORD BUSHING		
			J61-0307-05	WIRE BAND		
24	2A		K27-1264-04	KNØB (BUTTON) METER RANGE		
25	2A		K27-1304-04	KNØB (BUTTON) SPEAKERS A/B		
26	2A		K29-2001-04	KNØB ASSY(BUTTON)POWER		
27	2A	*	K29-2020-04	KNØB VOLUME		
28	2A	*	K29-2016-04	KNØB BASS, TREBLE, BALANCE		
33	1B	*	L01-3961-05	POWER TRANSFORMER	KP	
33	1B	*	L01-3962-05	POWER TRANSFORMER	XT	
33	1B	*	L01-3965-05	POWER TRANSFORMER	UMUE	
33	1B	*	L01-3967-05	POWER TRANSFORMER	E	
37	1C		N08-0128-35	BINDING POST (GND)		
△ S1	1A		S40-1073-05	PUSH SWITCH (POWER)		
△ S2	1B		S31-2083-05	SLIDE SWITCH (POWER TYPE)	UMUE	
POWER SUPPLY (X00-2300-11)						
41	1B		J13-0041-05	FUSE CLIP	KP	
41	1B		J13-0041-05	FUSE CLIP	UMUE	
41	1B		J13-0054-05	FUSE CLIP	XTE	
POWER AMP (X07-2210-10)						
C1 ,2			CE04FW1H010M	ELECTRØ 1.0UF 50WV		
C3 ,4			CC45FSL1H221J	CERAMIC 220PF J		
C5 ,6			CE04FW1A101M	ELECTRØ 100UF 10WV		
C7 ,8			CC45FSL1H080D	CERAMIC 8.0PF D		
C9 ,10			CF92FV1H682J	MF 6800PF J		
C11 ,12			CC45FSL1H030C	CERAMIC 3.0PF C		
C13 ,14			CC45FSL1H270J	CERAMIC 27PF J		
C15 ,16			CE04FW1H330M	ELECTRØ 33UF 50WV		
C17 ,18			CK45FF1H103Z	CERAMIC 0.010UF Z		
C19 ,20			CE04FW1H010M	ELECTRØ 1.0UF 50WV		
C21 ,22			CK45FF1H103Z	CERAMIC 0.010UF Z		
C23 -26			CF92FV1H104J	MF 0.10UF J		
C27		*	CE04FW2A470M	ELECTRØ 47UF 100WV		
C29 ,30			CE04FW1E470M	ELECTRØ 47UF 25WV		
C33			CE04FW1E470M	ELECTRØ 47UF 25WV		
C34 ,35			C90-1294-05	ELECTRØ 7500UF 63WV	XTE	
C34 ,35		*	C90-1318-05	ELECTRØ 7500 80WV	KPUM	
C34 ,35		*	C90-1318-05	ELECTRØ 7500 80WV	UE	
C36			CE04HW1A220M	NP-ELEC 22UF 10WV		
C37			CE04FW1V4R7M	ELECTRØ 4.7UF 35WV		
C38			CE04FW1H330M	ELECTRØ 33UF 50WV		
C42 -45			CK45FE2H682P	CERAMIC 6800PF P		
C46			CE04FW1J100M	ELECTRØ 10UF 63WV		
C47 ,48			CC45FSL1H101J	CERAMIC 100PF J	XTE	
C49			CE04FW1H010M	ELECTRØ 1.0UF 50WV		

E: Scandinavia & Europe H: Audio Club K: USA P: Canada

S: South Africa T: England U: PX(Far East, Hawaii)

UE: AAFES(Europe) X: Australia M: Other Areas

△ indicates safety critical components.

PARTS LIST

× New Parts

Parts without Parts No. are not supplied.

Les articles non mentionnés dans le Parts No. ne sont pas fournis.

Teile ohne Parts No. werden nicht geliefert.

Ref. No. 参照番号	Address 位置	New Parts 新	Parts No. 部品番号	Description 部品名 / 規格	Desti- nation 仕 向	Re- marks 備考
C51 ,52			CK45FB1H102K	CERAMIC 1000PF K		
E	1B, 1C		N09-0333-05	TAPPING SCREW (Ø3X12)		
H	1B		N29-0067-05	PUSH RIVET (Ø3.5X4.5)		
CP1 ,2			R90-0187-05	MULTI-COMP 0.22X2 K 5W		
R19 ,20			RD14AB2E621J	FL-PROOF RD 620 J 1/4W		
R33 ,34		*	RD14AB2E132J	FL-PROOF RD 1.3K J 1/4W		
R35 -38			RD14AB2E470J	FL-PROOF RD 47 J 1/4W		
R39 -42			RD14AB2E221J	FL-PROOF RD 220 J 1/4W		
R43 -46			RD14AB2E2R2J	FL-PROOF RD 2.2 J 1/4W		
R59 ,60			RD14AB2E221J	FL-PROOF RD 220 J 1/4W		
R71 ,72			RS14KB3D4R7J	FL-PROOF RS 4.7 J 2W		
R85			RS14KB3D122J	FL-PROOF RS 1.2K J 2W	XTE	
R85		*	RS14KB3D152J	FL-PROOF RS 1.5K J 2W	KPUM	
R85		*	RS14KB3D152J	FL-PROOF RS 1.5K J 2W	UE	
R93 ,94		*	RS14KB3D271J	FL-PROOF RS 270 J 2W		
R95		*	RS14KB3D680J	FL-PROOF RS 68 J 2W		
R96		*	RS14KB3D820J	FL-PROOF RS 82 J 2W		
R99		*	RS14KB3A822J	FL-PROOF RS 8.2K J 1W		
R103		*	RS14KB3A822J	FL-PROOF RS 8.2K J 1W		
R105,106		*	RD14AB2E182J	FL-PROOF RD 1.8K J 1/4W		
R107,108		*	RD14AB2E152J	FL-PROOF RD 1.5K J 1/4W		
R111		*	RD14AB2E220J	FL-PROOF RD 22 J 1/4W		
R121		*	RD14GB2E220J	FL-PROOF RD 22 J 1/4W		
R122		*	RD14AB2E220J	FL-PROOF RD 22 J 1/4W		
VR1 ,2		*	R12-0094-05	TRIMMING PØT. (470) IDLING		
K1	1B		S51-2058-05	MAGNETIC RELAY		
D3 ,4			1S5133	DIODE		
D3 ,4			1S1555	DIODE		
D3 ,4			1S2076	DIODE		
D5 ,6			RD18E(B)	ZENER DIODE		
D7 ,8			1S2076A	DIODE		
D9 ,10		*	RD8.2E(B)	ZENER DIODE		
D11 ,12			1S2076A	DIODE		
D14 -16			1S2076A	DIODE		
D17			DSM1A1	DIODE		
D24			DSM1A1	DIODE		
D25 -32			S3V20	DIODE		
D34			1S2076A	DIODE		
D35			RD24E(B)	ZENER DIODE		
D36 ,37			TF620M	SCR		
D39 ,40			RD16E(B)	ZENER DIODE		
D41 ,42			RD18E(B)	ZENER DIODE		
IC1			UPC1237H	IC (PROTECTION)		
Q1 -8			2SC2320(E,F)	TRANSISTOR		
Q1 -8			2SC945(A)(Q,P)	TRANSISTOR		
Q9 ,10			2SA733(A)(Q,P)	TRANSISTOR		
Q9 ,10			2SA999(E,F)	TRANSISTOR		
Q11 ,12			2SA1123(Q,R)	TRANSISTOR		
Q13 ,14			2SC2590(Q,R)	TRANSISTOR	XTE	
Q13 ,14			2SC2591(Q,R)	TRANSISTOR	KPUM	
Q13 ,14			2SC2591(Q,R)	TRANSISTOR	UE	
Q15 ,16			2SA1110(Q,R)	TRANSISTOR	XTE	

E: Scandinavia & Europe H: Audio Club K: USA P: Canada

S: South Africa T: England U: PX(Far East, Hawaii)

UE: AAFES(Europe) X: Australia M: Other Areas

▲ indicates safety critical components.

PARTS LIST

× New Parts

Parts without Parts No. are not supplied.

Les articles non mentionnés dans le Parts No. ne sont pas fournis.

Teile ohne Parts No. werden nicht geliefert.

Ref. No. 参照番号	Address 位置	New Parts 新	Parts No. 部品番号	Description 部品名 / 規格	Desti- nation 仕向	Re- marks 備考
Q15 ,16			2SA1111(Q,R)	TRANSISTOR	KPUM	
Q15 ,16			2SA1111(Q,R)	TRANSISTOR	UE	
Q17 ,18		*	2SC2921*5	TRANSISTOR	KPUM	
Q17 ,18		*	2SC2921*5	TRANSISTOR	UE	
Q17 ,18		*	2SC3284*5	TRANSISTOR	XTE	
Q19 ,20		*	2SA1215*5	TRANSISTOR	KPUM	
Q19 ,20		*	2SA1215*5	TRANSISTOR	UE	
Q19 ,20		*	2SA1303*5	TRANSISTOR	XTE	
Q21 ,22			2SA992(F,E)	TRANSISTOR		
Q23 ,24			2SC2631(Q,R)	TRANSISTOR		
Q27			2SC2167(Y,G)	TRANSISTOR		
Q34			2SA992(F,E)	TRANSISTOR		
Q35			2SC2320(E,F)	TRANSISTOR		
Q35			2SC945(A)(Q,P)	TRANSISTOR		
Q38			2SC2320(E,F)	TRANSISTOR		
Q38			2SC945(A)(Q,P)	TRANSISTOR		
Q39			2SA992(F,E)	TRANSISTOR		
Q40			2SA954(L,K)	TRANSISTOR		
Q41			2SC2003(L,K)	TRANSISTOR		
Q43 ,44			2SC945(A)(Q)	TRANSISTOR		
CONTROL (X11-2110-10)						
D7 -28 PL1	2A,2C 2A		B30-0431-05 B30-0284-05	LED(LN21CPH)PWR.TAPE MONI ETC. LAMP(12V 0.11A)		
C1 ,2			CE04FW1E100M	ELECTRO 10UF 25WV		
C3 ,4			CE04FW1C470M	ELECTRO 47UF 16WV		
C5 ,6			CC45FSL1H101J	CERAMIC 100PF J		
C7 ,8			CF92FV1H123J	MF 0.012UF J		
C9 ,10			CF92FV1H332J	MF 3300PF J		
C11 ,12			CE04FW1H2R2M	ELECTRO 2.2UF 50WV		
C13 ,14			CF92FV1H102J	MF 1000PF J		
C15 ,16			CE04FW1E470M	ELECTRO 47UF 25WV		
C17 ,18			CK45FF1H103Z	CERAMIC 0.010UF Z		
C19 ,20			CE04FW1HOR1M	ELECTRO 0.1UF 50WV		
C21 -24			CF92FV1H333J	MF 0.033UF J		
C25			CE04FW1H010M	ELECTRO 1.0UF 50WV		
C26			CE04FW1H010M	ELECTRO 1.0UF 50WV		
C27 ,28			CC45FSL1H150J	CERAMIC 15PF J		
C29 -32			CF92FV1H334J	MF 0.33UF J		
C33			CE04FW1E100M	ELECTRO 10UF 25WV		
C34 ,35			CE04FW1E100M	ELECTRO 10UF 25WV		
C36			CE04FW1E100M	ELECTRO 10UF 25WV		
C37 -40			CF92FV1H223J	MF 0.022UF J		
C41 ,42			CE04FW1E100M	ELECTRO 10UF 25WV		
C43 ,44			CK45FF1H103Z	CERAMIC 0.010UF Z		
C45 ,46			CE04FW1HR22M	ELECTRO 0.22UF 50WV		
C47 -49			CE04FW1H010M	ELECTRO 1.0UF 50WV		
C50			CK45FF1H472Z	CERAMIC 4700PF Z		
C51 -64			CC45FSL1H121J	CERAMIC 120PF J	XTE	
C65 ,66			CK45FB1H222K	CERAMIC 2200PF K	XTE	
C67 ,68			CE04FW1E221M	ELECTRO 220UF 25WV		
C69 ,70			CE04FW1E470M	ELECTRO 47UF 25WV		
C73			CK45FF1H103Z	CERAMIC 0.010UF Z		
C74			CE04FW1E470M	ELECTRO 47UF 25WV		
C75 -78			CF92FV1H332J	MF 3300PF J	XTE	

E: Scandinavia & Europe H: Audio Club K: USA

P: Canada

S: South Africa

T: England U: PX(Far East, Hawaii)

UE: AAFES(Europe)

X: Australia M: Other Areas

⚠ indicates safety critical components.

PARTS LIST

× New Parts

Parts without Parts No. are not supplied.

Les articles non mentionnés dans le Parts No. ne sont pas fournis.

Teile ohne Parts No. werden nicht geliefert.

Ref. No. 参照番号	Address 位置	New Parts 新	Parts No. 部品番号	Description 部品名 / 規格	Desti- nation 仕向	Re- marks 備考
C79 ,80 C81 ,82			CE04FW1V471M CK45FB1H471K	ELECTRO 470UF 35WV CERAMIC 470PF K		
45 49 J1 J2 ,3	1B 1C 1C 1C	*	E11-0156-05 E20-0822-05 E13-0223-05 E13-0818-05	PHONE JACK (3P) PHONES LOCK TERMINAL BOARD(8P) PHONE JACK (2P) PHONE PHONE JACK (8P) INPUT, TAPE 1/2		
L1 ,2			L39-0085-05	PHASE-COMPENSATION COIL		
R93 ,94 R95 ,96 R98 R101-104 VR1		*	RS14DB3A100J RS14DB3D561J RS14DB3D560J RD14AB2E221J R06-5131-05	FL-PROOF RS 10 J 1W FL-PROOF RS 560 J 2W FL-PROOF RS 56 J 2W FL-PROOF RD 220 J 1/4W POTENTIOMETER(100KX2)VOLUME	2B	
VR2 VR3 ,4	1A 1A	*	R01-5051-05 R06-3049-05	POTENTIOMETER(200K) BALANCE POTENTIOMETER(10KX2) TREB, BASS		
S1 S2 S3 S4	2C 2C 1B 2C	*	S42-5041-05 S42-5042-05 S42-2110-05 S40-2323-05	MULTI-PUSH SW (5 KEY) INPUT SEL MULTI-PUSH SW (5 KEY) INPUT SEL MULTI-PUSH SW SPEAKER PUSH SWITCH (METER RANGE)		
D1 -6 D29 -32 D33 -36 D39 IC1			1S2076A DSM1A1 RD16E(B) RD16E(B) AN6556F	DIODE DIODE ZENER DIODE ZENER DIODE IC(OP AMP X2)		
IC1 IC2 Q1 ,2 Q3 ,4 Q5		*	NJM4558D(A) NJM2041D-D 2SD637 2SB642 2SC2167(Y,G)	IC(OP AMP X2) IC(OP AMP X2) TRANSISTOR TRANSISTOR TRANSISTOR		

E: Scandinavia & Europe H: Audio Club K: USA

P: Canada

S: South Africa

T: England

U: PX(Far East, Hawaii)

UE: AAFES(Europe)

X: Australia

M: Other Areas

⚠ indicates safety critical components.

SPECIFICATION

EIA

Power Amplifier Section

Power Output

125 watts* per channel minimum RMS, both channels driven at 8 ohms from 20 Hz to 20,000 Hz with no more than 0.05% total harmonic distortion

Both Channels Driven into

8 ohms at 1 kHz 125 W + 125 W (Except USA, Europe and U.K.)

Total Harmonic Distortion

(AUX—SPKR 8 Ω)

at Rated Output,
20 Hz ~ 20,000 Hz 0.05%

at 1/2 Rated Output,
20 Hz ~ 20,000 Hz 0.02%

at 1/2 Rated Output, 1,000 Hz 0.007%

(PHONO—SPKR 8 Ω : at -20 dB VOLUME Level)

at Rated Output, 1,000 Hz 0.02%

Intermodulation Distortion

(60 Hz:7 kHz = 4:1) 0.02% at rated power
into 8 ohms

Damping Factor

20 (1,000 Hz into 8 ohms)

Frequency Response

10 Hz to 100 kHz,
+0 dB, -3 dB

Input Sensitivity/Impedance

Phono MM 2.5 mV/47 k ohms

TUNER, AUX., TAPE PLAY 150 mV/33 k ohms

Signal-to-Noise Ratio (IHF-A)

Phono MM 73 dB for 2.5 mV input

Phono MM 79 dB for 5.0 mV input

TUNER, AUX., TAPE PLAY 100 dB

Maximum Input Level for Phono

MM 140 mV (RMS), T.H.D. 0.05%
at 1 kHz

Output Level/Impedance

TAPE REC (Pin) 150 mV/3.3 k ohms

Frequency Response for Phono

RIAA standard curve ±0.3 dB
(30 Hz to 20,000 Hz)

Tone Control

Bass ±10 dB at 100 Hz

Treble ±8 dB at 10 kHz

Loudness Control

(at -30 dB VOLUME Level) +8 dB at 100 Hz

Subsonic Filter

18 Hz, 6 dB/oct.

General

Power Consumption 4.1 A (USA and Canada : UL and
CSA)

230 W (Others)

AC Outlets Switched 2, Unswitched 1

(Except some countries)

Dimensions W: 420 mm (16-9/16")

H: 109 mm (4-5/16")

D: 280 mm (11")

Weight (Net) 8.5 kg (18.7 lb)

* Measured pursuant to Federal Trade Commission's Trade Regulation

rule on Power Output Claims for Amplifier in U.S.A.

IEC/NF

European and U.K. models

Power Amplifier Section

Rated Power Output

1 kHz, 4 ohms 90 W + 90 W

4 ohms at 60 Hz to 12.5 kHz

no more than 0.7% THD (IEC/NF) 90 W + 90 W

8 ohms at 60 Hz to 12.5 kHz

no more than 0.7% THD (IEC/NF) 80 W + 80 W

Total Harmonic Distortion

Rated Power Output into 8 ohms 0.05%

Intermodulation Distortion 0.02%

Frequency Response 10 Hz ~ 100 kHz

+0 dB, -3 dB

S/N Weighted: Rated Output Power (IEC-A)

() = Unweighted at 50 mW (DIN)

Phono MM 73 dB (56 dB)

TUNER, AUX., TAPE PLAY 100 dB (56 dB)

Damping Factor at 8 ohms, 1,000 Hz 20

Input Sensitivity/Impedance

Phono MM 2.5 mV/47 kΩ

TUNER, AUX., TAPE PLAY 150 mV/33 kΩ

Tone Control

Bass 100 Hz ±10 dB

Treble 10 kHz ±8 dB

Loudness Control (-30 dB) 8 dB at 100 Hz

Subsonic Filter 18 Hz, 6 dB/oct.

General

Power Consumption

IEC 230 W

Dimensions W: 420 mm

H: 109 mm

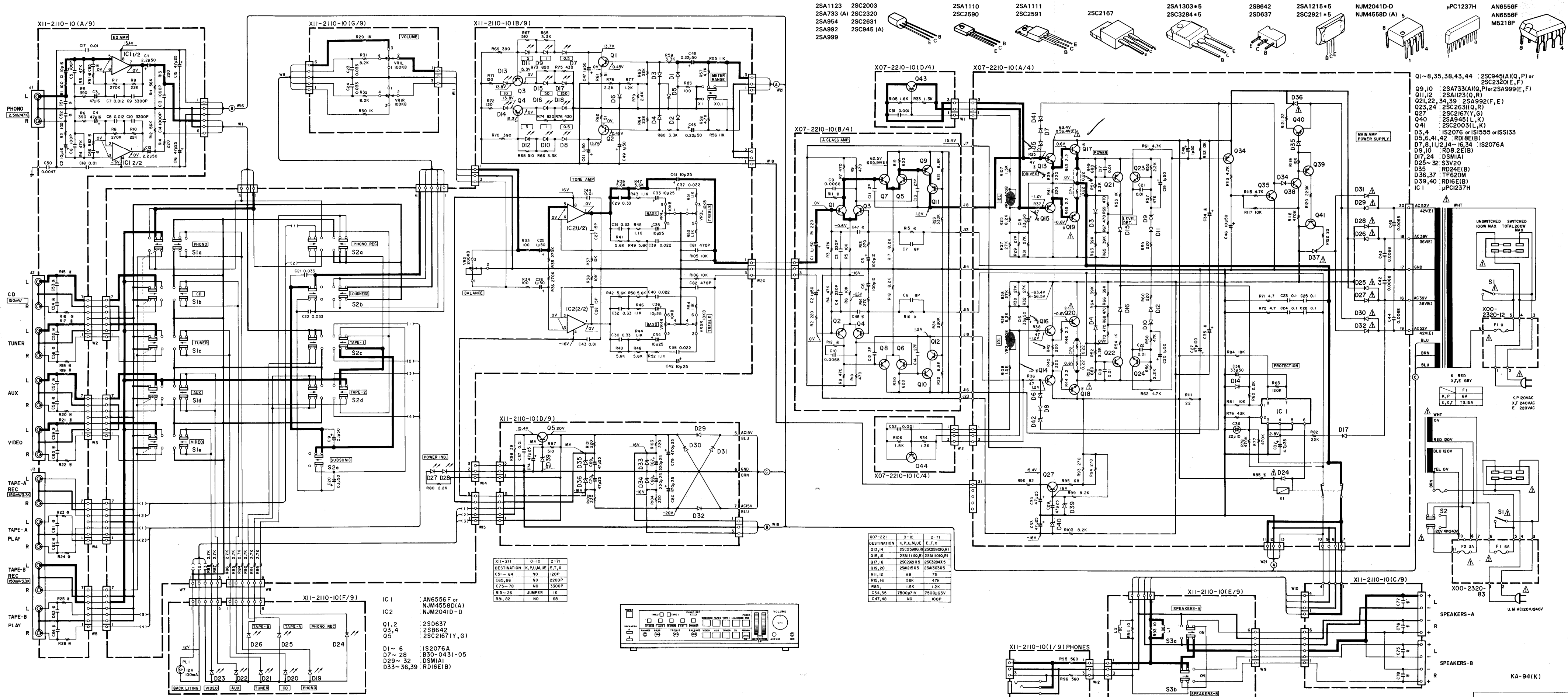
D: 280 mm

Weight (Net) 8.5 kg

Kenwood follows a policy of continuous advancements in development. For this reason specifications may be changed without notice.

Kenwood poursuit une politique de progrès constants en ce qui concerne le développement. Pour cette raison, les spécifications sont sujettes à modifications sans préavis.

Kenwood strebt ständige, Verbesserungen in der Entwicklung an. Daher bleiben Änderungen der technischen Daten jederzeit vorbehalten.



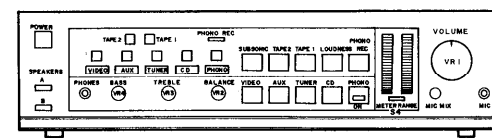
- 25A1123 25C2003 25A1110 25A1111 25C2167 25A1303*5 2S8642 25D637 25A1215*5 25C2921*5 NJM2041-D NJM4558D (A) 5 PC1237H AN6556F AN6556F M5218P

- Q1~8,35,38,43,44 : 2SC945(A)(Q,P) or 2SC2320(E,F)
- Q9,10 : 2SA733(A)(Q,P) or 2SA992(F,E)
- Q11,12 : 2SA1123(O,R)
- Q21,22,34,39 : 2SA992(F,E)
- Q23,24 : 2SC2631(Q,R)
- Q27 : 2SC2167(V,G)
- Q40 : 2SA945(L,K)
- Q41 : 2SC2003(L,K)
- D3,4 : IS2076 or IS1555 or ISS133
- D5,6,41,42 : RD18E(B)
- D7,8,11,12,14~16,34 : IS2076A
- D9,10 : RD8.2E(B)
- D17,24 : DSM1A1
- D25~32 : S3V20
- D35 : RD24E(B)
- D36,37 : TF620M
- D39,40 : RD16E(B)
- IC 1 : PC1237H

XI1-211	0-10	2-71
DESTINATION	K,P,U,M,U,E	E,T,X
C31-64	NO	100P
C65,66	NO	2200P
C75-78	NO	3300P
R15-26	JUMPER	1K
R81,82	NO	68

X07-221	0-10	2-71
DESTINATION	K,P,U,M,U,E	E,T,X
Q13,14	2SC2590(Q,R)	2SC2590(Q,R)
Q15,16	2SA1110(Q,R)	2SA1101(Q,R)
Q17,18	2SC2921(X)	2SC2843(X)
Q19,20	2SA1215(X)	2SA1303(X)
R11,12	68	75
R15,16	56K	47K
R85	1.5K	1.2K
C34,35	7500p7V	7500p63V
C47,48	NO	100P

- IC 1 : AN6556F or NJM4558D(A)
- IC 2 : NJM2041D-D
- Q1,2 : 2SD637
- Q3,4 : 2S8642
- Q5 : 2SC2167(Y,G)
- D1~6 : IS2076A
- D7~28 : B30-0431-05
- D29~32 : DSM1A1
- D33~36,39 : RD16E(B)



CAUTION: For continued safety, replace safety critical components only with manufacturer's recommended parts (refer to parts list). Indicates safety critical components. To reduce the risk of electric shock, leakage-current or resistance

measurements shall be carried out (exposed parts are acceptably insulated from the supply circuit) before the appliance is returned to the customer.

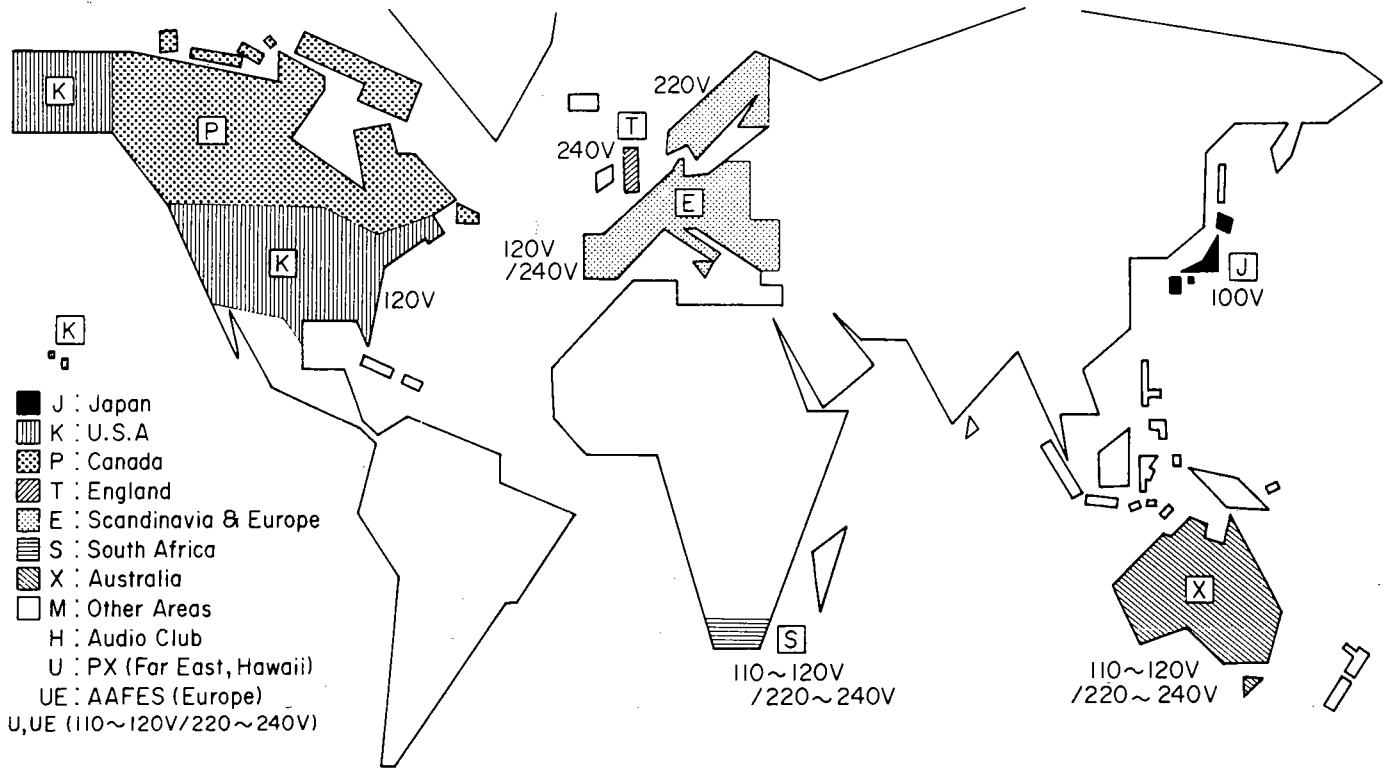
DC voltages are as measured with a high impedance voltmeter with no signal input. Values may vary slightly due to variations between individual instruments or/and units.

Les tensions c.c. doivent être mesurées avec un voltmètre à haute impédance sans signal d'entrée. Les valeurs peuvent différer légèrement du fait des variations inhérentes aux appareils et aux instruments de mesure individuels.

Die angegebenen Gleichspannungswerte wurden mit einem hochohmigen Spannungsmesser ohne Eingangssignal gemessen. Dabei schwanden die Meßwerte aufgrund von Unterschieden zwischen einzelnen Instrumenten oder Geräten u.U. geringfügig.



WORLD MAP & AREA CODE



Note:

Component and circuitry are subject to modification to insure best operation under differing local conditions. This manual is based on, the U.S. (K) standard, and provides information on regional circuit modification through use of alternate schematic diagrams, and information on regional component variations through use of parts list.

TRIO-KENWOOD CORPORATION

Shionogi Shibuya Building, 17-5, 2-chome Shibuya, Shibuya-ku, Tokyo 150, Japan

KENWOOD ELECTRONICS
 DIVISION OF KENWOOD U.S.A. CORPORATION
 1315 E. Watsoncenter Rd., Carson, California 90745; U.S.A.
 75 Seaview Drive, Secaucus, New Jersey 07094, U.S.A.

TRIO-KENWOOD CANADA INC.
 1070 Jayson Court, Mississauga, Ontario, Canada L4W 2V5

TRIO-KENWOOD ELECTRONICS, N.V.
 Leuvensesteenweg 504 B-1930 Zaventem, Belgium

TRIO-KENWOOD ELECTRONICS GmbH
 Rembrücker Str. 15, 6056 Heusenstamm, West Germany

TRIO-KENWOOD FRANCE S.A.
 5, Boulevard Ney, 75018 Paris, France

TRIO-KENWOOD (AUSTRALIA) PTY. LTD. (INCORPORATED IN N.S.W.)
 4E Woodcock Place, Lane Cove, N.S.W. 2066, Australia

KENWOOD & LEE ELECTRONICS, LTD.

Wang Kee Building, 5th Floor, 34-37, Connaught Road, Central, Hong Kong