

91

STEREO AMPLIFIER

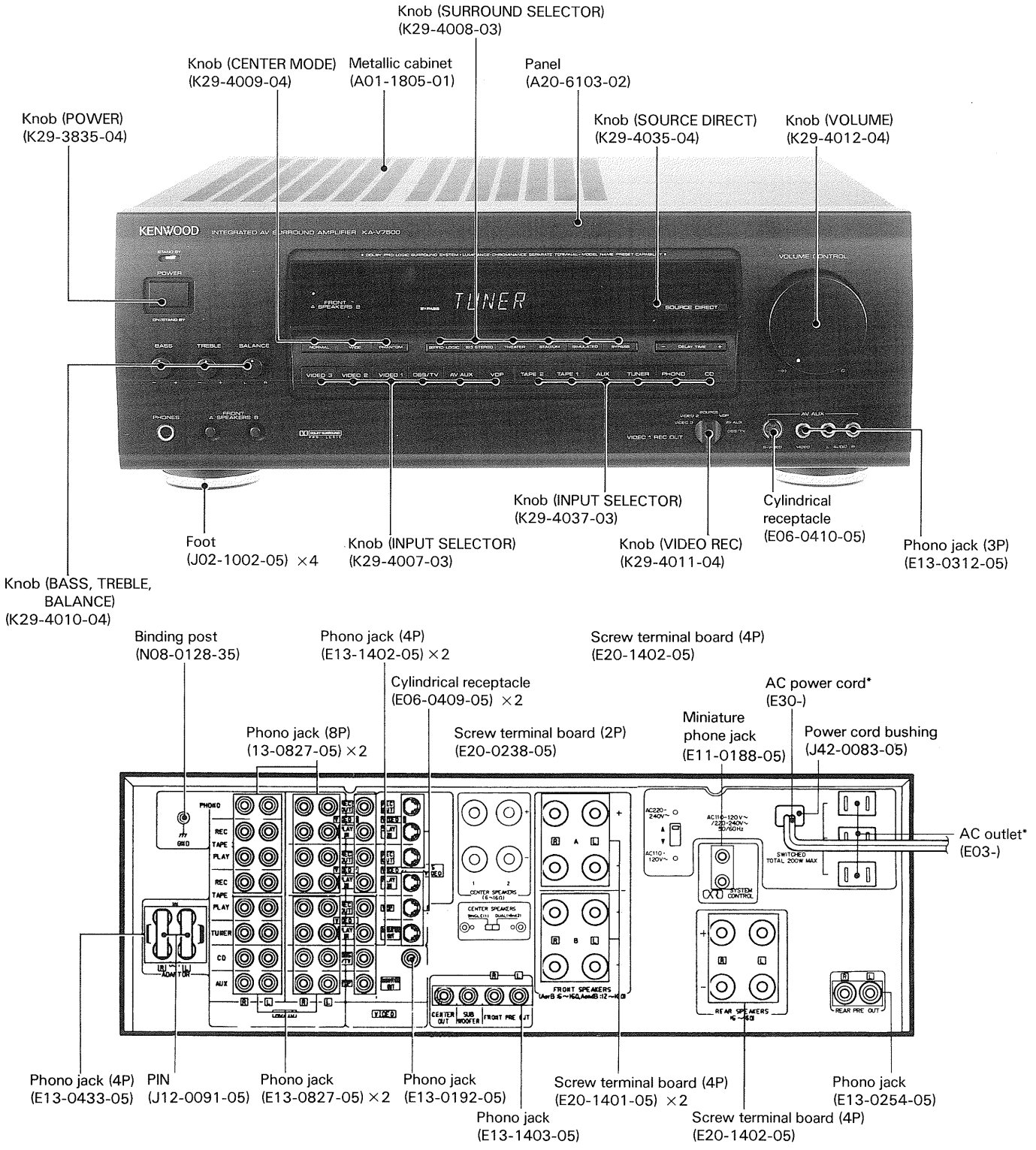
KA-V5500/7500

SERVICE MANUAL

KENWOOD

©1990-10 PRINTED IN JAPAN
B51-4207-00(S)1541

<KA-V7500>



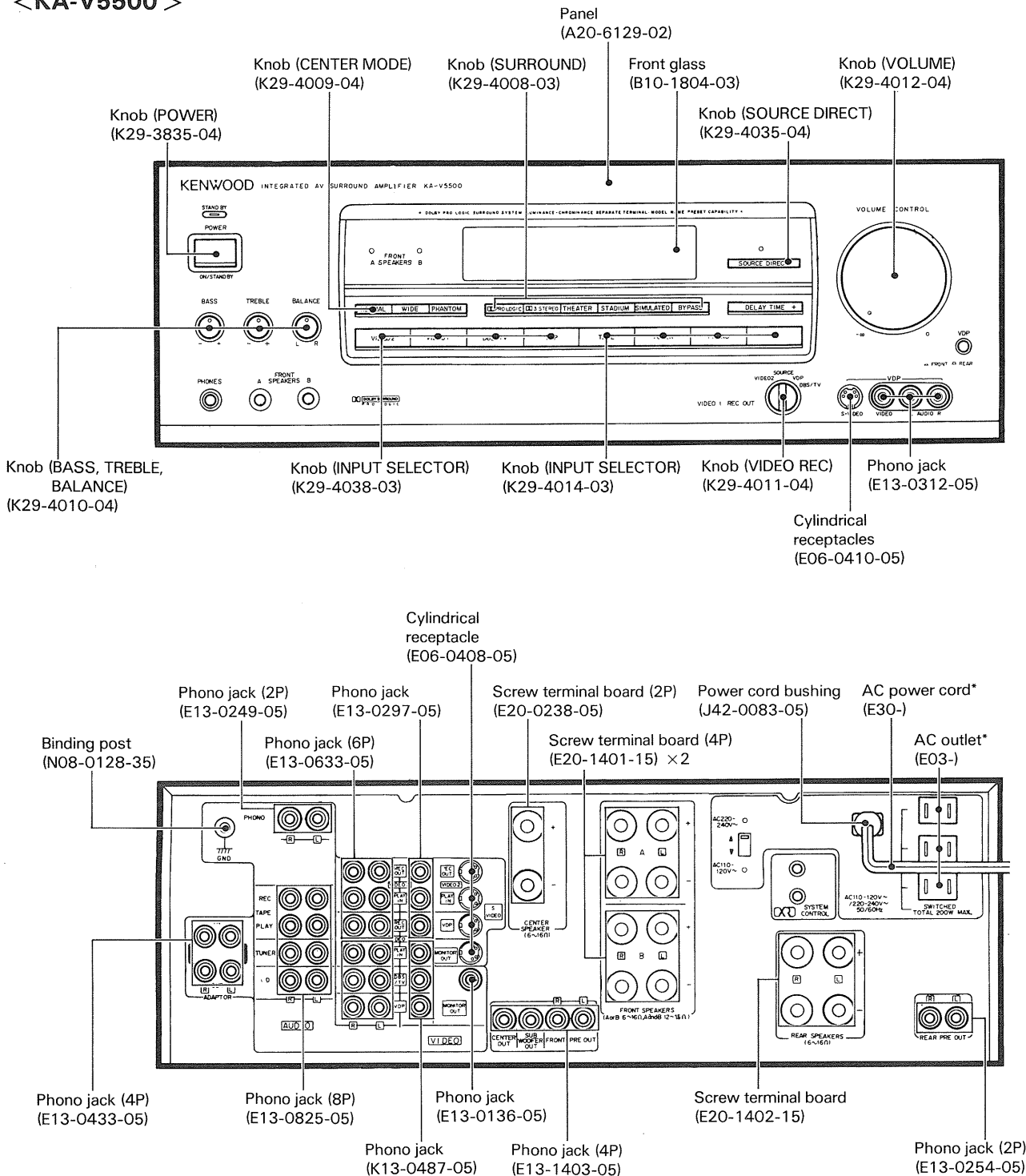
* Refer to parts list on page 43.

KA-V5500/7500

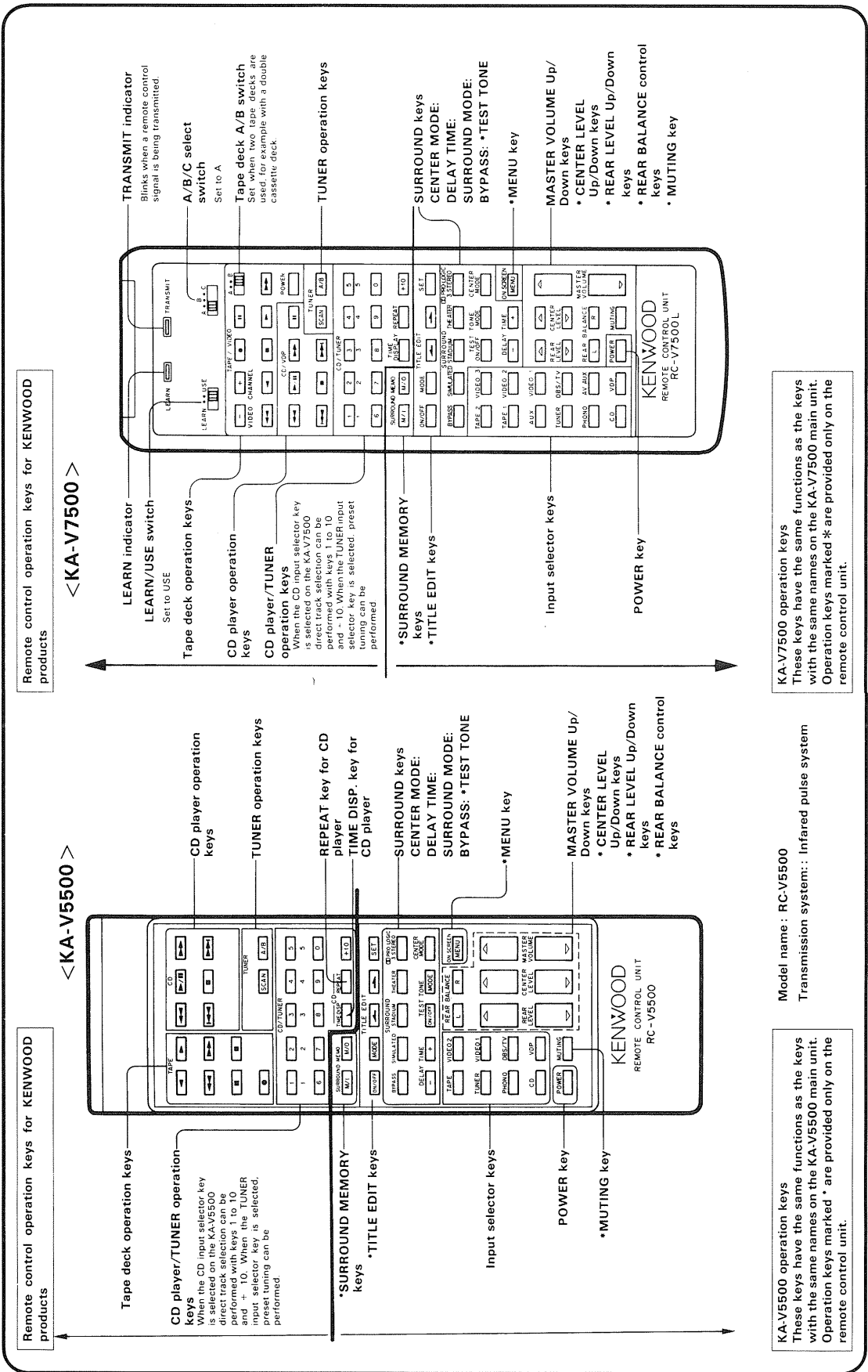
CONTENTS

DISASSEMBLY FOR REPAIR	3	SCHEMATIC DIAGRAM	25
BLOCK DIAGRAM	4	EXPLODED VIEW	41
CIRCUIT DESCRIPTION	5	PARTS LIST	43
ADJUSTMENT/REGLAGE/ABGLEICH	12	SPECIFICATIONS	59
PC BOARD (Component Side View)	15		

<KA-V5500>

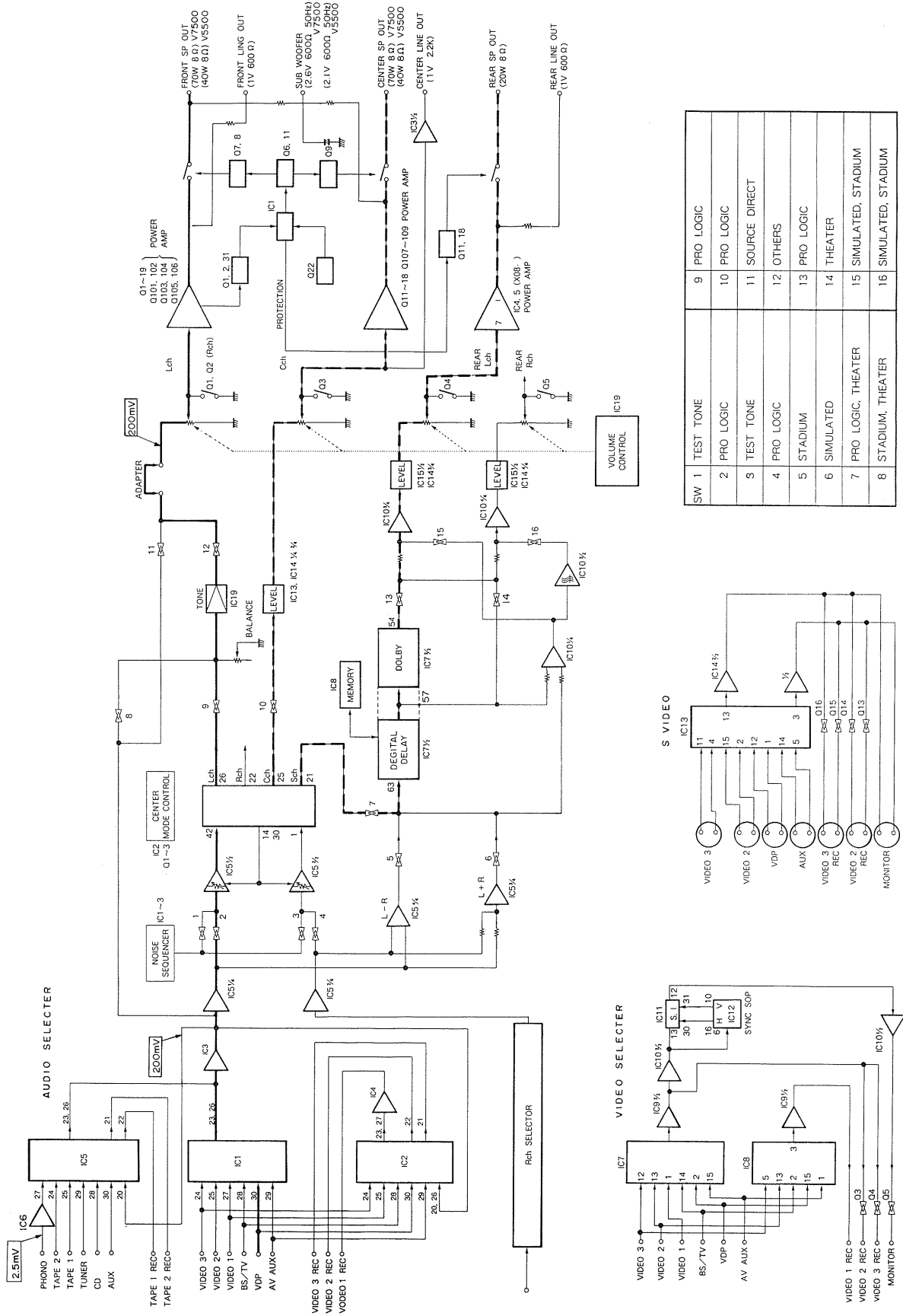


REMOTE CONTROL OPERATION

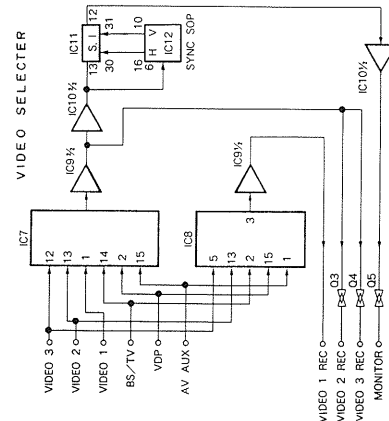
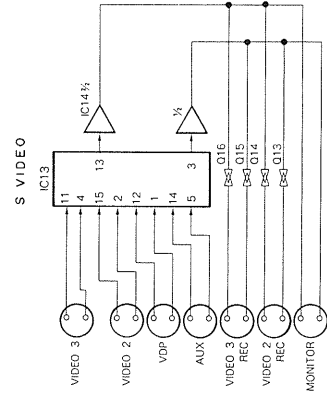


KA-V5500/7500

BLOCK DIAGRAM



SW 1	TEST TONE	9	PRO LOGIC
2	PRO LOGIC	10	PRO LOGIC
3	TEST TONE	11	SOURCE DIRECT
4	PRO LOGIC	12	OTHERS
5	STADIUM	13	PRO LOGIC
6	SIMULATED	14	THEATER
7	PRO LOGIC, THEATER	15	SIMULATED, STADIUM
8	STADIUM, THEATER	16	SIMULATED, STADIUM



KA-V5500/7500

CIRCUIT DESCRIPTION

Circuit description for Dolby prologic

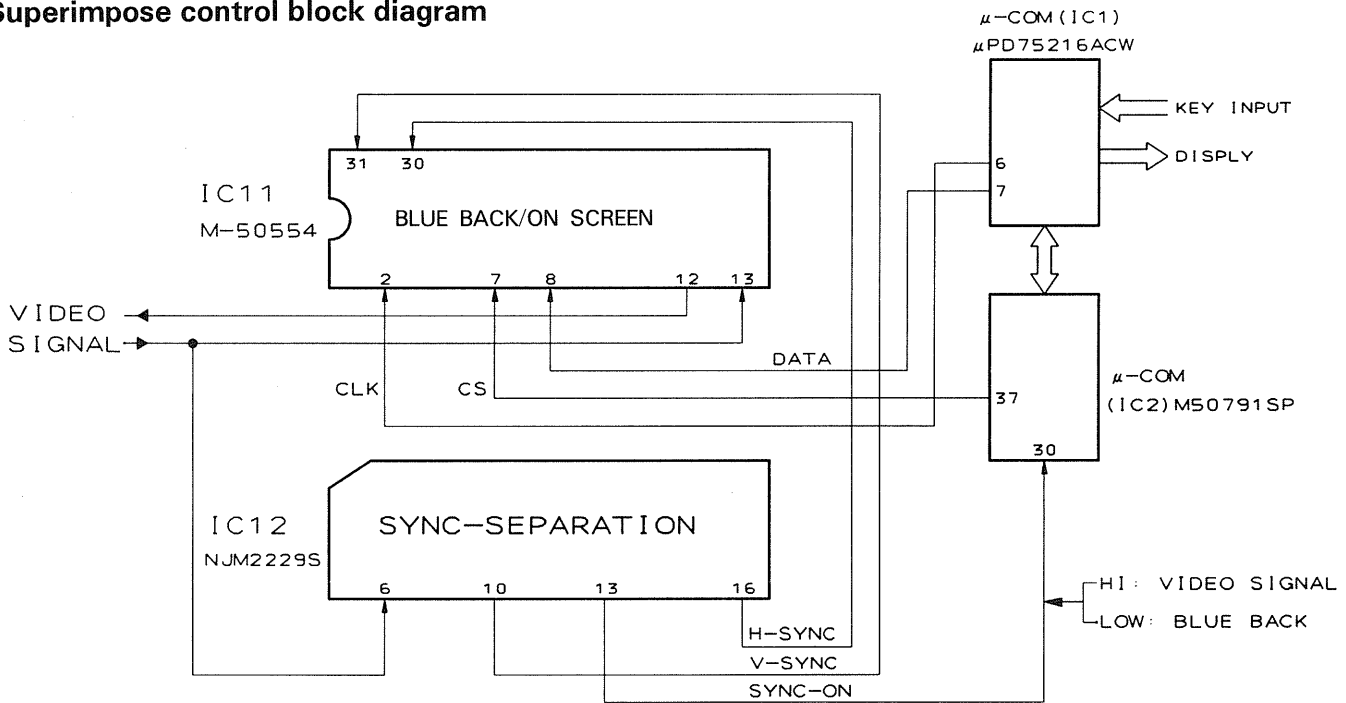
Basic explanation: See page 28 onward in the KA-V7000 manual.

Explanation of ICs used: See pages 24 and 25 in the KA-V6000 manual.

Circuit description for superimpose

See page 14 onward in the KA-V6000 manual.

Superimpose control block diagram



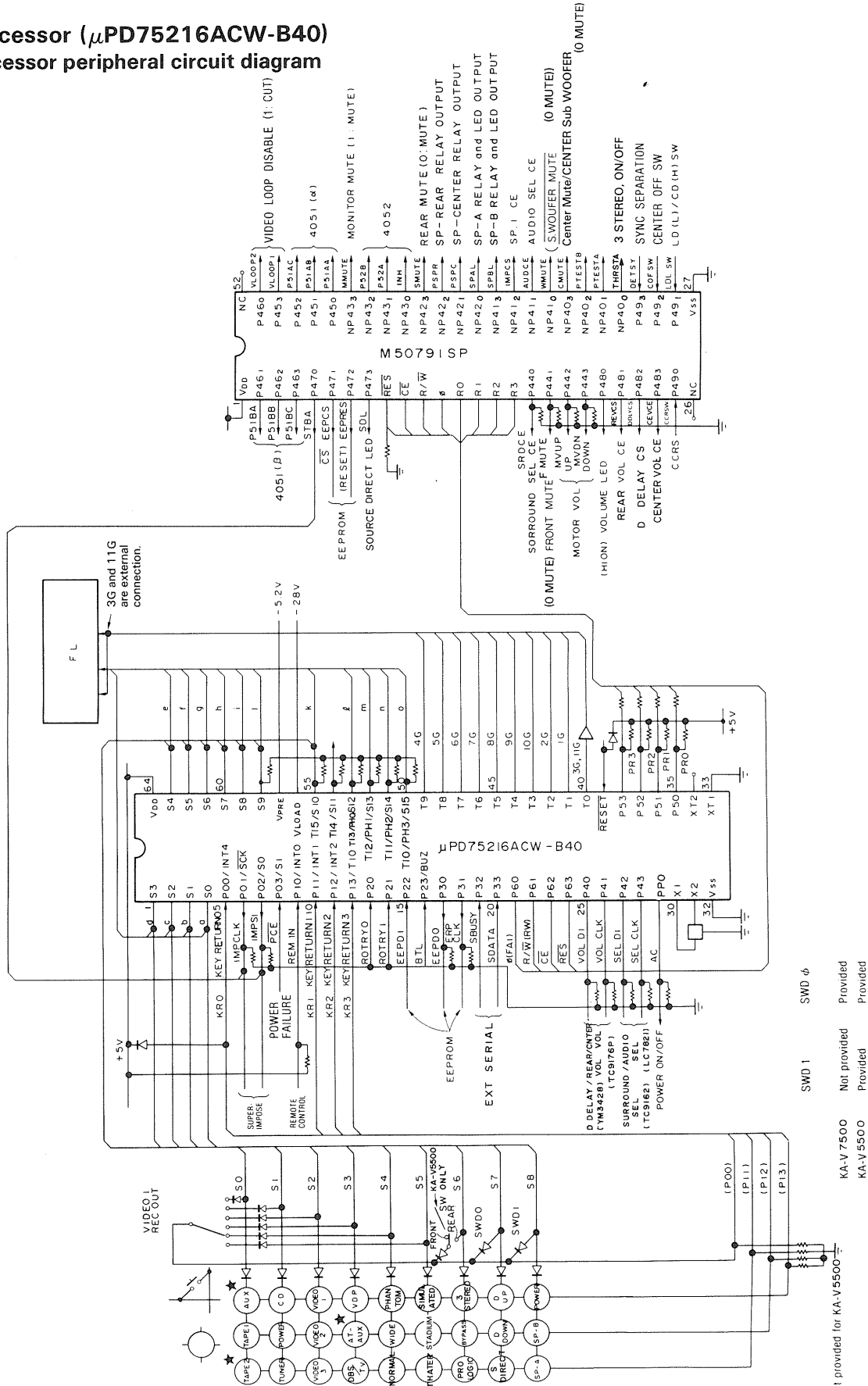
Notes:

- Vertical and horizontal sync signals are supplied from IC12 to IC11 with video signals.
- IC11 generates a blue background using a built-in sync generator when there is no video signal.
- IC11 outputs character information in addition to video according to commands from the microcomputer (IC1).

KA-V5500/7500

CIRCUIT DESCRIPTION

Microprocessor (μ PD75216ACW-B40)
Microprocessor peripheral circuit diagram



★ Not provided for KA-V5500-
 KA-V7500 Not provided
 KA-V5500 Provided

KA-V5500/7500

CIRCUIT DESCRIPTION

Pin Functions

μ PD75216ACW-B40

Pin No.	Pin Name	I/O	Name	Description
1	S0	O	Segment d	FL segment signal
2	S2	O	Segment c	FL segment signal
3	S1	O	Segment b	FL segment signal
4	S ϕ	O	Segment a	FL segment signal
5	P00/INT4	I	KR0	Key Return 0
6	P01/ \overline{sck}	O	IMPCLK	Serial clock for superimpose
7	P02/SO	O	IMPSI	Serial data for superimpose
8	P03/SI	I	\overline{PCE}	Power failure detection (0: Power failure)
9	P10/INT0	I	\overline{REMIM}	Remote control input (interrupt)
10	P11/INT1	I	KR1	Key Return 1
11	P12/INT2	I	KR2	Key Return 2
12	P13/TI0	I	KR3	Key Return 3
13	P20	I	ROTRY0	NC
14	P21	I	ROTRY1	NC
15	P22	I	EEP · DI	EEPROM serial data input
16	P23/BUZ	I	BTL	NC
17	P30	\overline{O}	EEP · DO	EEPROM serial data output
18	P31	\overline{O}	EEPCLK	EEPROM serial clock
19	P32	I/ \overline{O}	SBUSY	External serial communication busy signal
20	P33	I/ \overline{O}	SDATA	External serial communication data signal
21	P60	\overline{O}	0	Extension I/O (M50791SP) control signal
22	P61	\overline{O}	R/ \overline{W}	Extension I/O (M50791SP) control signal
23	P62	\overline{O}	\overline{CE}	Extension I/O (M50791SP) control signal
24	P63	\overline{O}	\overline{RES}	Extension I/O (M50791SP) control signal
25	P40	\overline{O}	VOLDI	Serial data for digital delay, rear volume and center volume
26	P41	\overline{O}	VOLCLK	Serial clock for digital delay, rear volume and center volume
27	P42	\overline{O}	SELDI	Serial data for audio (LC7821/22) and surround (TC9162/63)
28	P43	\overline{O}	SELCLK	Serial clock for audio (LC7821/22) and surround (TC9162/63)
29	PPO	\overline{O}	AC	Power ON/OFF relay control (1: ON)
30	X1	—	—	Microprocessor system clock oscillation pin
31	X2	—	—	Microprocessor system clock oscillation pin
32	V _{SS}	—	—	GND
33	XT1	—	—	Microprocessor subclock oscillation pin (unused)
34	XT2	—	—	Microprocessor subclock oscillation pin (unused)
35	P50	\overline{O}	PR0	Extension I/O (M50791SP) data signal
36	P51	\overline{O}	PR1	Extension I/O (M50791SP) data signal
37	P52	\overline{O}	PR2	Extension I/O (M50791SP) data signal
38	P53	\overline{O}	PR3	Extension I/O (M50791SP) data signal
39	\overline{RESET}	—	—	Reset input
40	T0	\overline{O}	3G, 11G	FL digit signal
41	T1	\overline{O}	1G	FL digit signal
42	T2	\overline{O}	1G	FL digit signal
43	T3	\overline{O}	10G	FL digit signal
44	T4	\overline{O}	9G	FL digit signal
45	T5	\overline{O}	8G	FL digit signal

KA-V5500/7500

CIRCUIT DESCRIPTION

Pin No.	Pin Name	I/O	Name	Description
46	T6	\bar{O}	7G	FL digit signal
47	T7	\bar{O}	6G	FL digit signal
48	T8	\bar{O}	5G	FL digit signal
49	T9	\bar{O}	4G	FL digit signal
50	T10/PH3/S15	\bar{O}	Segment o	FL segment signal
51	T11/PH2/S14	\bar{O}	Segment n	FL segment signal
52	T12/PH1/S13	\bar{O}	Segment m	FL segment signal
53	T13/PH0/S12	\bar{O}	Segment l	FL segment signal
54	T14/S11	\bar{O}	—	Unused
55	T15/S10	\bar{O}	Segment k	FL segment signal
56	V _{LOAD}	—	—	-28 V
57	V _{PRE}	—	—	-5.2 V
58	S9	\bar{O}	Segment j	FL segment signal
59	S8	\bar{O}	Segment i	FL segment signal
60	S7	\bar{O}	Segment h	FL segment signal
61	S6	\bar{O}	Segment g	FL segment signal
62	S5	\bar{O}	Segment f	FL segment signal
63	S4	\bar{O}	Segment e	FL segment signal
64	V _{DD}	—	—	+5.0 V

KA-V5500/7500

CIRCUIT DESCRIPTION

M50791SP

Pin No.	Pin Name	I/O	Name	Description
1	V _{DD}			Supply voltage (+5.0 V)
2	P46 ₁	O	P51BA	4051 (beta) control output
3	P46 ₂	O	P51BB	4051 (beta) control output
4	P46 ₃	O	P51BC	4051 (beta) control output
5	P47 ₀	O	STBA	Latch output
6	P47 ₁	O	ĒEPCS	EEPROM chip select output
7	P47 ₂	O	EEPRES	EEPROM reset output
8	P47 ₃	O	SDL	Source direct LED output (1: ON)
9	RES	I		μPD75216ACW P63: Reset input
10	CE	I		μPD75216ACW P62: Chip enable
11	R/W	I		μPD75216ACW P61: Read/write
12	0	I		μPD75216ACW P60: Timing clock
13~16	R ₀ ~R ₃	I/O		μPD75216ACW P50-P53: Data
17	P44 ₀	O	SRDCE	Surround selector IC (TC9162/63) chip enable
18	P44 ₁	O	FMUTE	Front mute (0: Mute)
19	P44 ₂	O	MVUP	Motor volume up output
20	P44 ₃	O	MVDN	Motor volume down output
21	P48 ₀	O	VOLL	Volume LED (1: ON)
22	P48 ₁	O	REVCE	Rear volume control chip enable
23	P48 ₂	O	DDLYCS	Digital delay IC chip select output
24	P48 ₃	O	CEVCE	Center/rear volume control chip enable
25	P49 ₀	I	CCRSIN	CCRS input
26	NC	—	—	N.C.
27	V _{SS}			GND
28	P49 ₁	I	LDLSW	CD (balanced)/LD (unbalanced) SW input
29	P49 ₂	I	COFSW	Center OFF SW input
30	P49 ₃	I	DETSY	Superimpose external/internal sync detection
31	P40 ₀	O	THRSTA	3 STEREO Control OUTPUT
32	P40 ₁	O	PTESTA	
33	P40 ₂	O	PTESTB	
34	P40 ₃	O	CMUTE	Center mute output (0: Mute)
35	P41 ₀	O	WMUTE	Sub-woofer mute output (0: Mute)
36	P41 ₁	O	AUDCE	Audio selector (LC7821/22) chip enable
37	P41 ₂	O	IMPCS	Superimpose chip select output
38	P41 ₃	O	SPBL	Pro-logic and other selections
39	P42 ₀	O	SPAL	Speaker A relay and LED output
40	P42 ₁	O	SPPC	Speaker B Relay and LED output (1: ON)
41	P42 ₂	O	PSPR	Rear speaker relay output
42	P42 ₃	O	SMUTE	Rear mute output (0: Mute)
43	P43 ₀	O	INH	4052 inhibit output
44, 45	P43 ₁ , P43 ₂	O	P52A, P52B	4052 control output
46	P43 ₃	O	MMUTE	Monitor mute (1: Mute)
47~49	P45 ₀ ~P45 ₂	O	P51AA~P51AC	4051 (alpha) control signal
50	P45 ₃	O	VLOOP1	Video loop inhibit (for VIDEO 2) (1: Cut)
51	P46 ₀	O	VLOOP2	Video loop inhibit (for VIDEO 3) (1: Cut)
52	NC			N.C.

KA-V5500/7500

CIRCUIT DESCRIPTION

1. Initial Settings

- (1) INPUT SELECTOR : TUNER
- (2) SURROUND MODE : BYPASS
- (3) PRO-LOGIC : PHANTOM
- (4) 3-STEREO : NORMAL
- (5) REAR/CENTER LEVEL AND DELAY : -10 dB, 15.0 msec
- (6) SURROUND MEMORY : Every at PRO-LOGIC, 1-5 PHANTOM
- (7) SURROUND MEMORY REAL LEVEL AND DELAY : -10 dB, 15.0 msec
- (8) SOURCE DIRECT : OFF
- (9) SPEAKERS A/B : ON/ON
- (10) PRO-LOGIC TEST MODE : L-ch
- (11) POWER : OFF
- (12) ON-SCREEN DISPLAY (information) : ON

(1) Initialize operation

IN: Pressing the TUNER key, plug in AC.

OUT: Perform the usual operation.

Contents: Perform the settings in "1. Initial Settings", and at the same time all-clear EEPROM.

Note: In a case where the backup of the microprocessor is cut off simply, EEPROM is not all-cleared. Therefore, at the time when EEPROM is reinstalled, be sure to this initialize operation.

(2) Test mode

(2-1) Setting by a key on unit itself

IN: Pressing the CD key, plug in AC.

OUT: Unplug AC or perform the following operation.
In a mode other than where the FL tube display is all lit, set the POWER key to OFF.

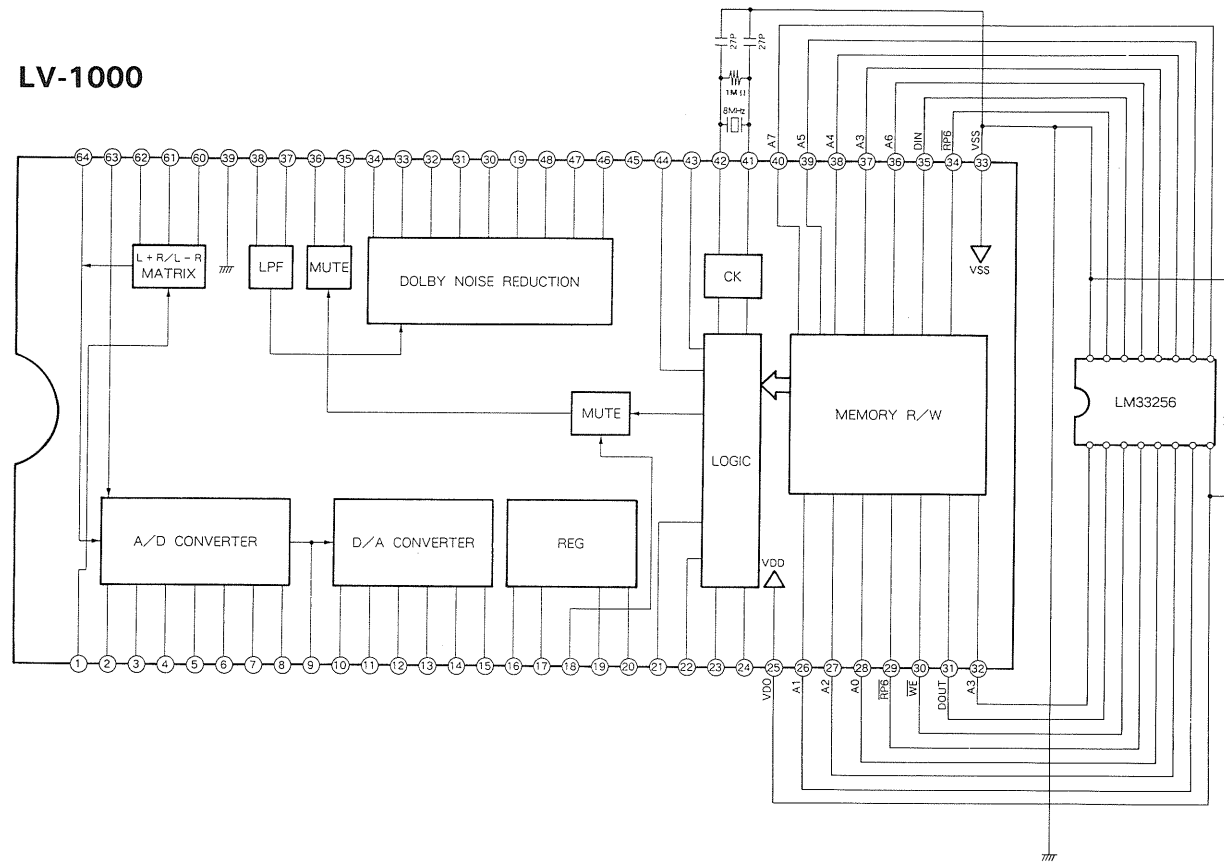
Contents:

- (i) When the test mode is entered, the FL tube display is all lit. Cancel the all lit FL tube display by the POWER key.
- (ii) In the test mode, the following operations are different from normal.
 - Rear and center volume: Only 2 points of MIN. and MAX.
 - Rear balance: Only 3 points of L-ch, center and R-ch.
 - Delay time:
 - PRO-LOGIC... Only 3 points of 15 msec, 21 msec and 30 msec
 - THEATER... Only 3 points of 0 msec, 15 msec and 30 msec
 - Test tone: At the time of the test tone mode, mode changes to subsequent modes automatically at intervals of 2 seconds (L-ch → C-ch → R-ch → S-ch (in Normal/Wide mode), Front → Rear (in Phantom mode or (L-ch → C-ch → R-ch (3-STEREO))).

(3) Controlled ICs

- 1. Audio selector LC7821/22
- 2. Video selector μ PD4051/52
- 3. Surround selector TC9162/63
- 4. Rear/center level TC9167P
- 5. Digital delay LV1000
- 6. On screen M50355
- 7. Extension I/O M50791SP
- 8. Dolby PRO LOGIC LA2770
- 9. External memory M6M80021P (EEPROM)

LV-1000



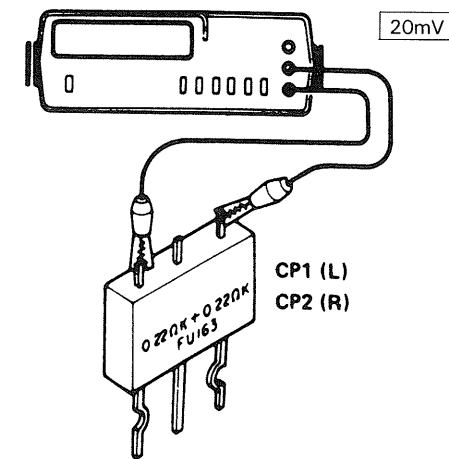
● ADJUSTMENT

No.	ITEM	INPUT SETTINGS	OUTPUT SETTINGS	AMPLIFIER SETTINGS	ALIGNMENT POINTS	ALIGN FOR	FIG.
Unless otherwise specified, the individual switches should be set as follows: POWER: ON SPEAKER: B REC OUT: OFF SELECT: PHONO							
1	BLANK SIGNAL CURRENT	X89-1122-70	Connect a DC voltmeter to both ends of CP1 and CP2.	VOLUME: 0	VR1 (L) VR2 (R)	20 mV	(a)
2	AUTO BALANCE ALIGNMENT (X14-2650-01)	Input a same phase and level signal to L _{IN} (TP7) and R _{IN} (TP6). (200 mV, 1 kHz)	Jumper between TP8 and TP9. Connect an AC voltmeter between L _{OUT} (TP13) and R _{OUT} (TP12).		VR2	Align VR2 so that the difference between voltmeter readings is minimum.	
3			Jumper between TP8 and TP9. Connect an AC voltmeter between L _{OUT} (TP13) and R _{OUT} (TP12).		VR1	Align VR1 so that the voltmeter pointer deflection is minimum.	
4			Remove the pin jumpered between TP8 and TP9 and check that the voltmeter readings at pins ② and ③ do not change.		Check		
5	DOLBY LEVEL (X08-2430-00)	Prologic: Normal Connect the AG to CD terminal AG INPUT: 1 kHz Adjust the AG input level so as to the output of TP5 (X14) be 300 mV.	Connect a DC voltmeter between TP2 (X08) and GND.		VR3	300 mV	6

Pin Description

Pin No.	Description	Pin No.	Description
1	Delay input signal changeover switch (L+R/L-R)	42	Crystal oscillator for oscillation circuit
2	Comparator power supply filter	43	Switching between long and short modes
3, 15	Detection input filter	44	Switching between serial and parallel inputs
4, 14	Detection input filter	45	Test mode pin. Normally open or Vss.
5, 13	Pre-emphasis capacitor	46	NR smoothing capacitor
6, 12	Sliding band filter capacitor	47	NR smoothing capacitor
7	Sliding band filter capacitor and local decoder output	48	Capacitor for control amplifier frequency characteristics
8, 10	Capacitor for smoothing detection output	49	Variable resistor input
9	Capacitor for de-coupling operating threshold voltage	50	NR input
11	Sliding band filter capacitor and delay output	51	7-kHz low-pass filter output
16	Reference voltage (1/2 Vcc), primary	52	NR input
17	Reference voltage (1/2 Vcc), secondary	53	De-coupling capacitor
18	Mute control input pin	54	Delay output and NR output
19	Vcc	55	Mute circuit input
20	VDD output	56	Mute circuit output
21	Clock for serial input, data input for parallel input	57	7-kHz filter output
22	Data for serial input, data input for parallel input	58	7-kHz filter input
23	Column address selection for serial input, data input for parallel input	59	GND
24	Row address selection for serial input, data input for parallel input	60	R channel input
25	VDD	61	L channel input
26~40	Connection with memory IC	62	Matrix output de-coupling capacitor
33	Vss	63	Noise shaping and delay input
41	Crystal oscillator for oscillation circuit	64	Noise shaping output

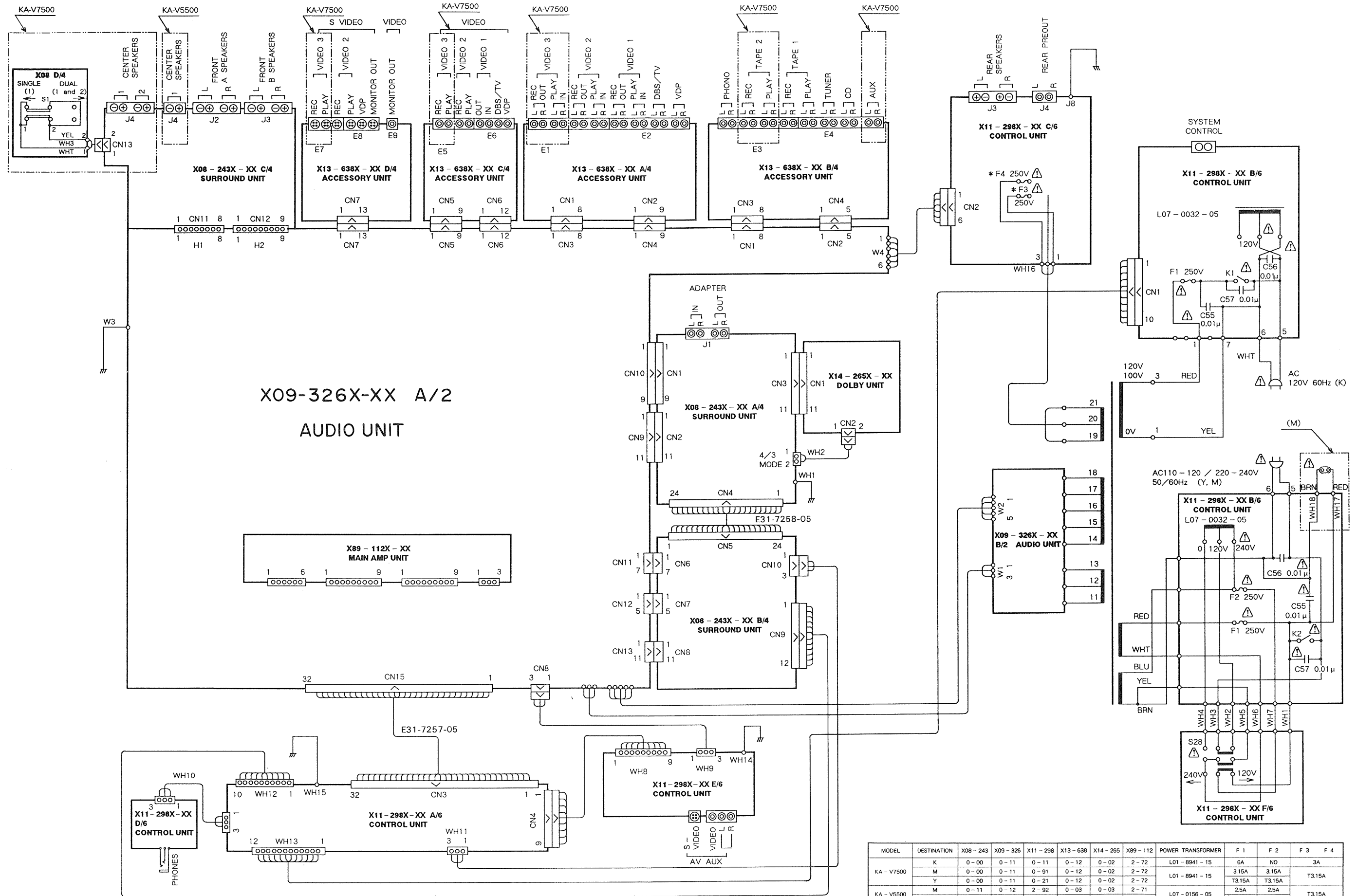
DC voltmeter
Voltmètre de CC
Gleichspannungsmesser



(a)

KA-V5500/7500 KA-V5500/7500

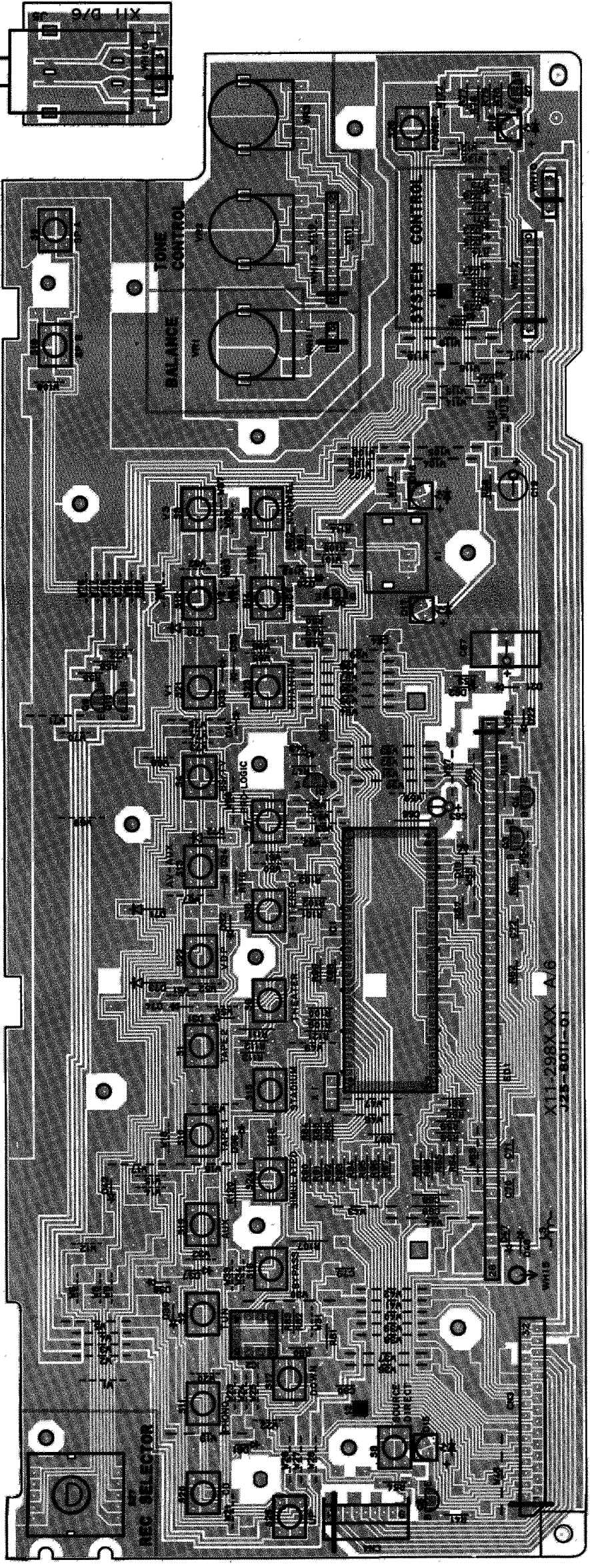
WIRING DIAGRAM



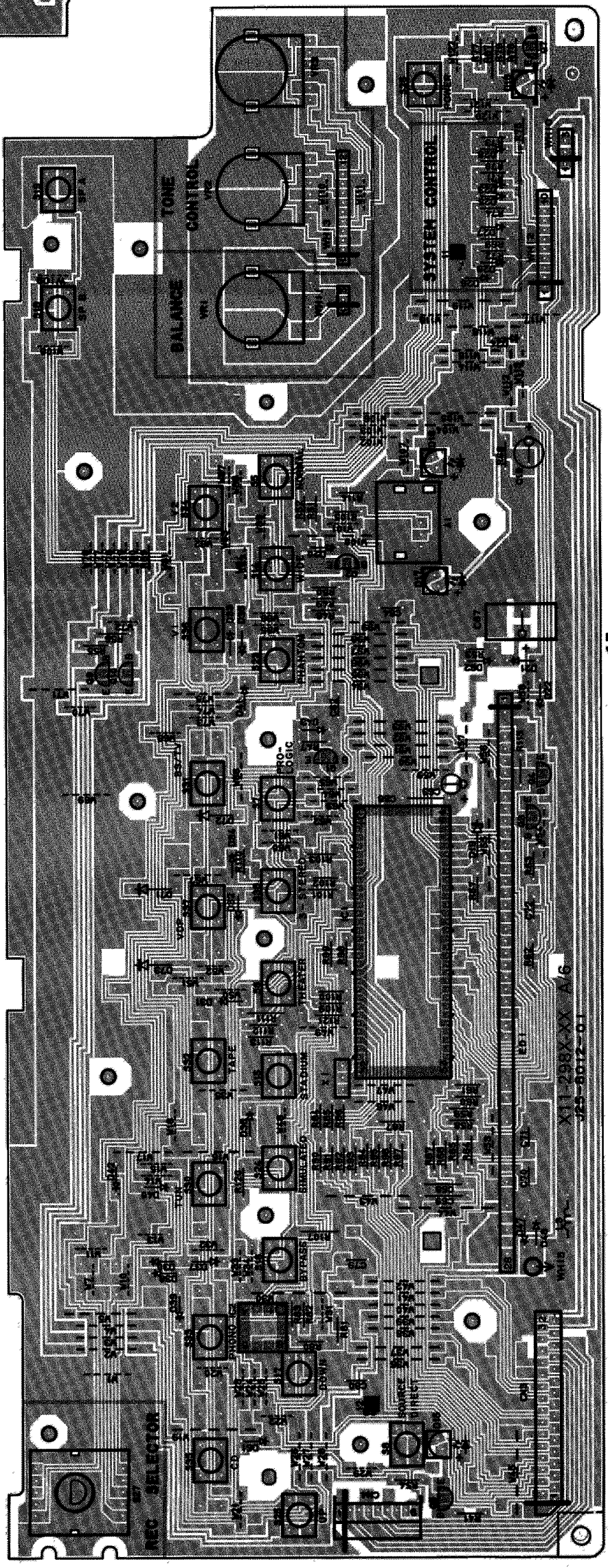
MODEL	DESTINATION	X08-243	X09-326	X11-298	X13-638	X14-265	X89-112	POWER TRANSFORMER	F 1	F 2	F 3	F 4
KA-V7500	K	0-00	0-11	0-11	0-12	0-02	2-72	L01-8941-15	6A	NO		3A
	M	0-00	0-11	0-91	0-12	0-02	2-72	L01-8941-15	3.15A			3.15A
	Y	0-00	0-11	0-21	0-12	0-02	2-72	L01-8941-15	T3.15A	T3.15A		T3.15A
KA-V5500	M	0-11	0-12	2-92	0-03	0-03	2-71	L07-0156-05	2.5A	2.5A		T3.15A
	Y	0-11	0-12	0-22	0-03	0-03	2-71	L07-0156-05	T2.5A	T2.5A		T3.15A

PC BOARD (Component side view)

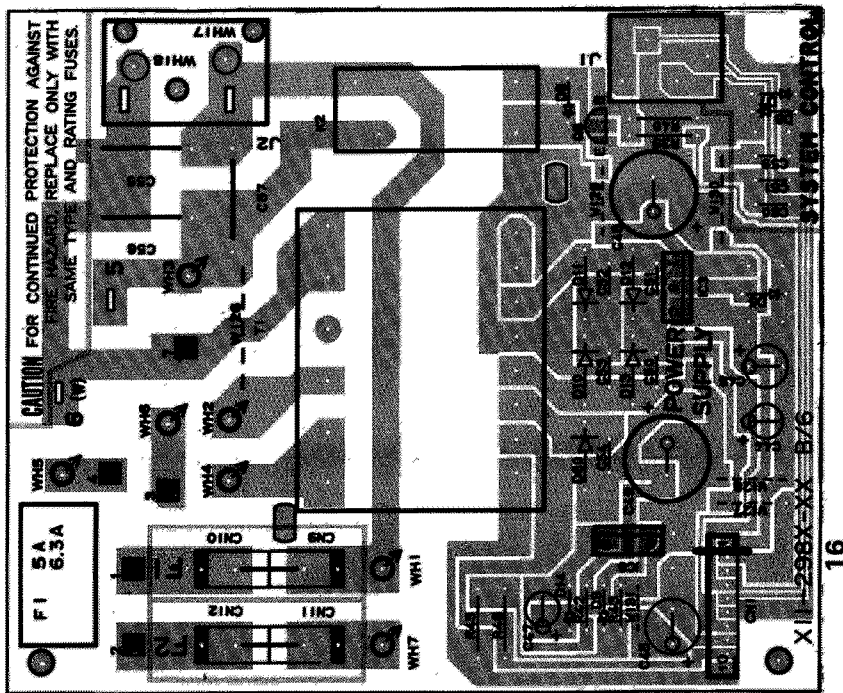
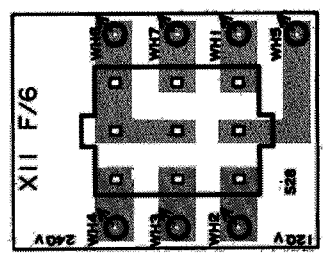
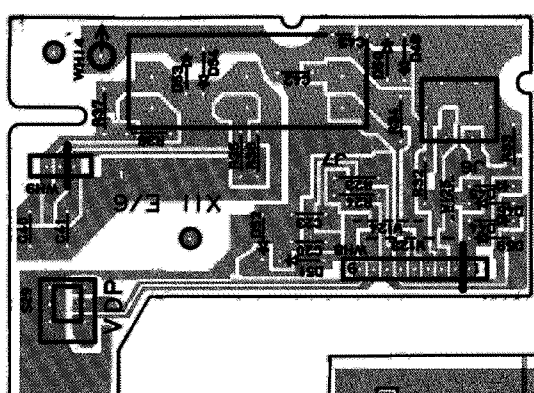
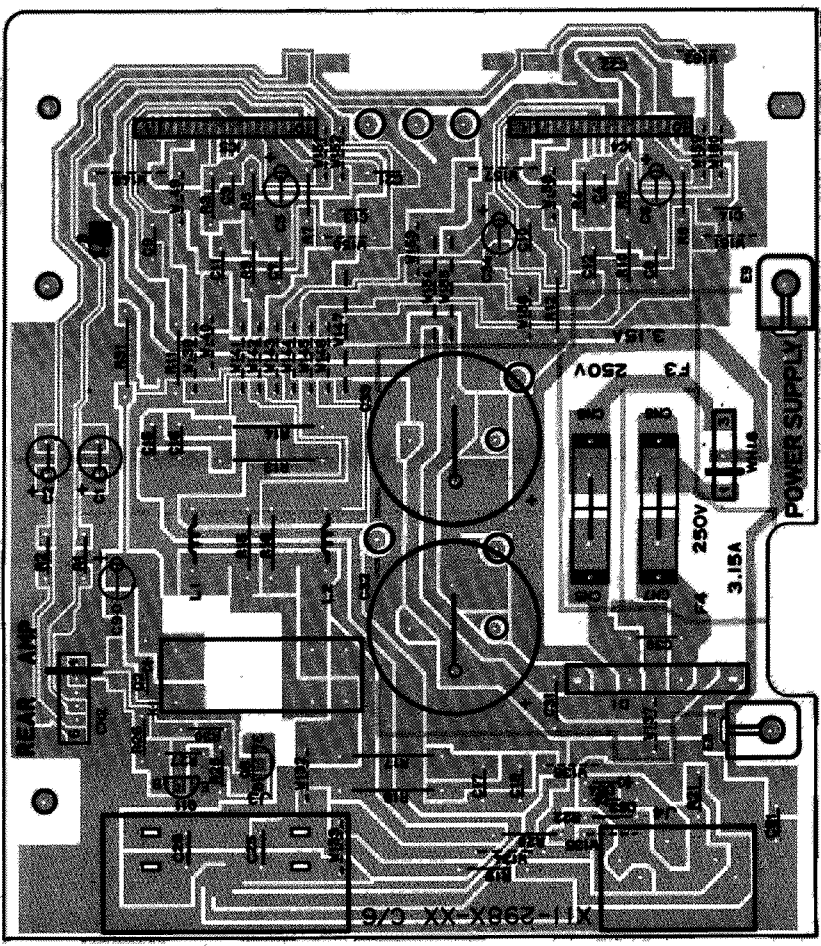
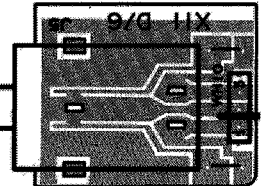
CONTROL UNIT KA-V7500



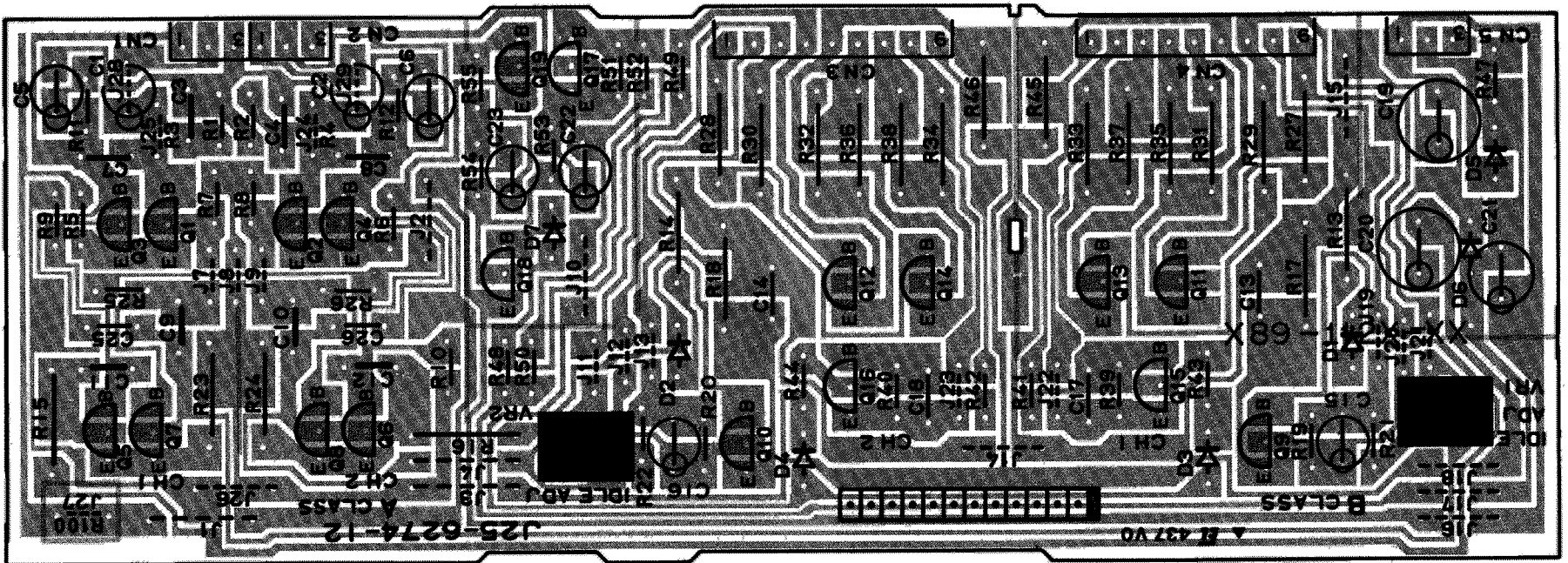
KA-V5500



PHONES

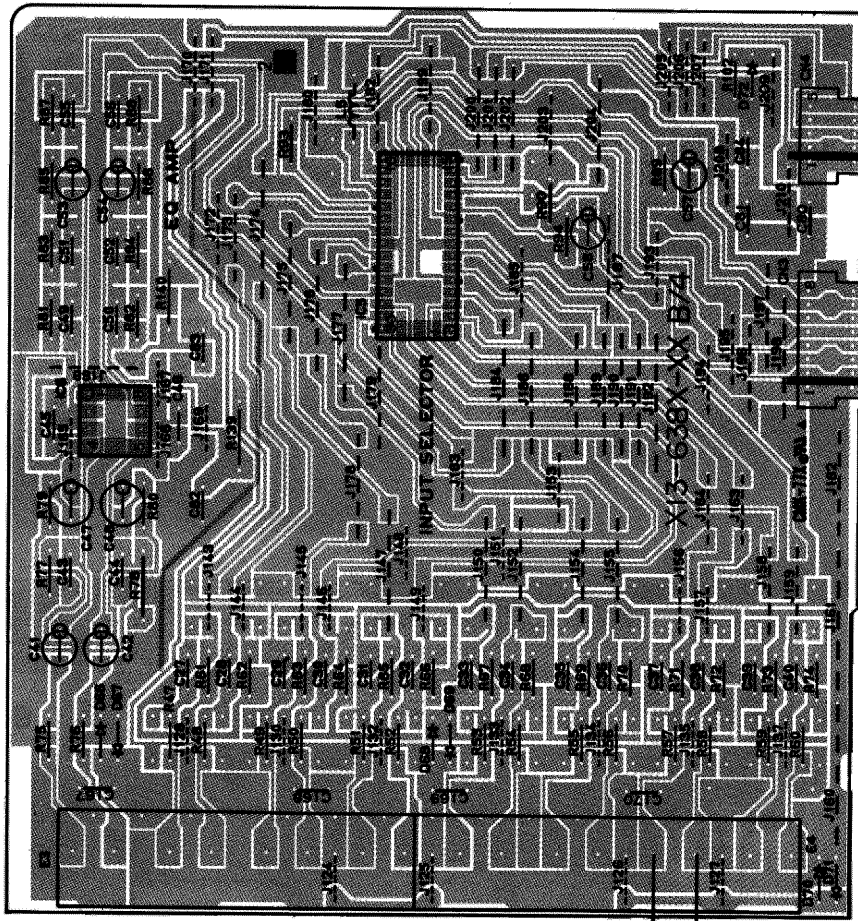
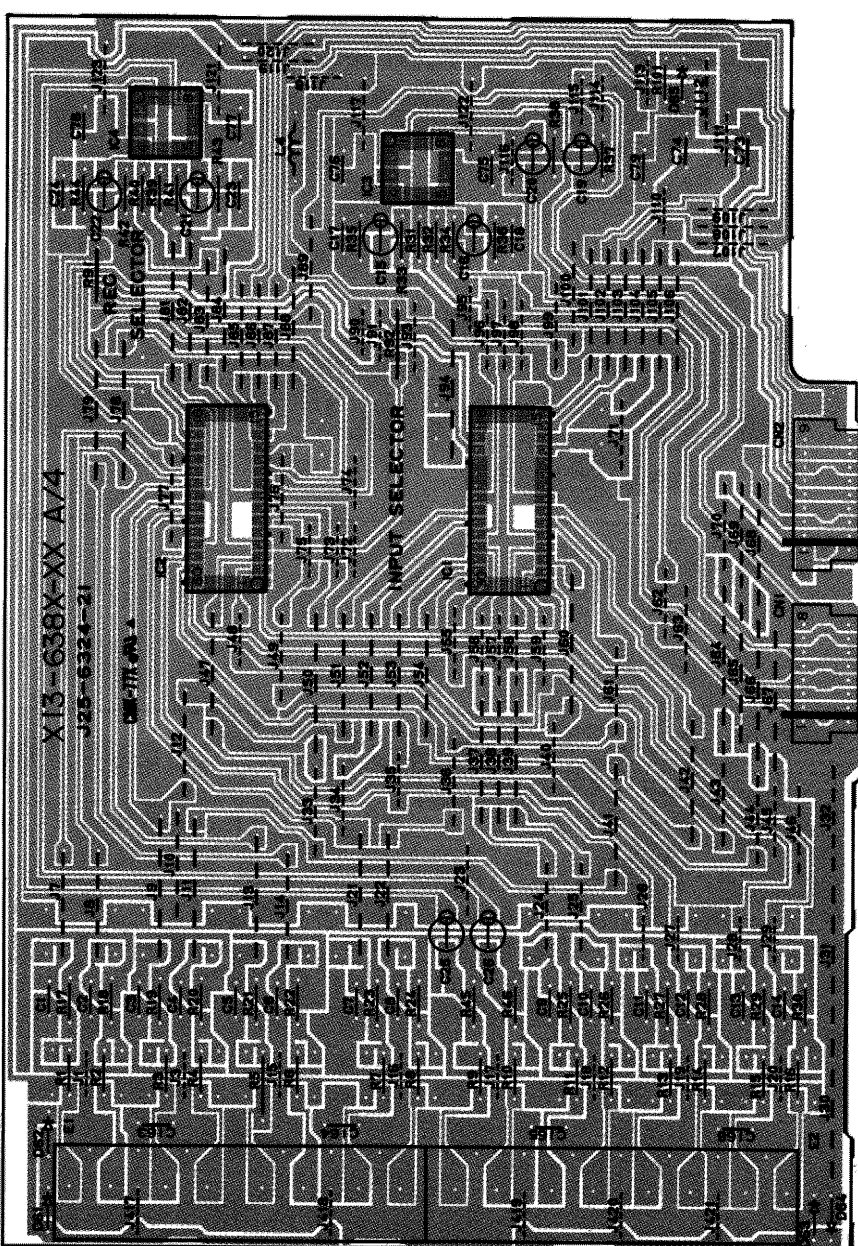


MAIN AMP UNIT

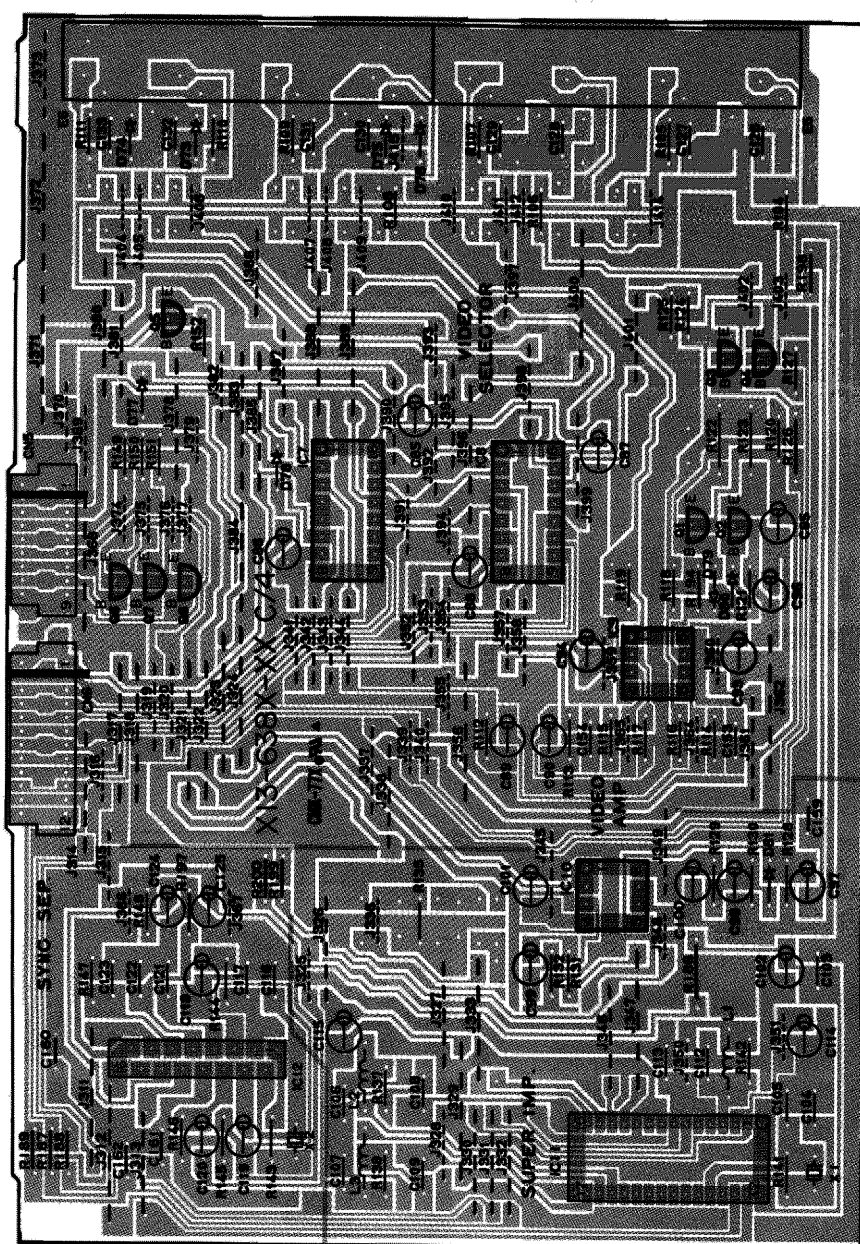
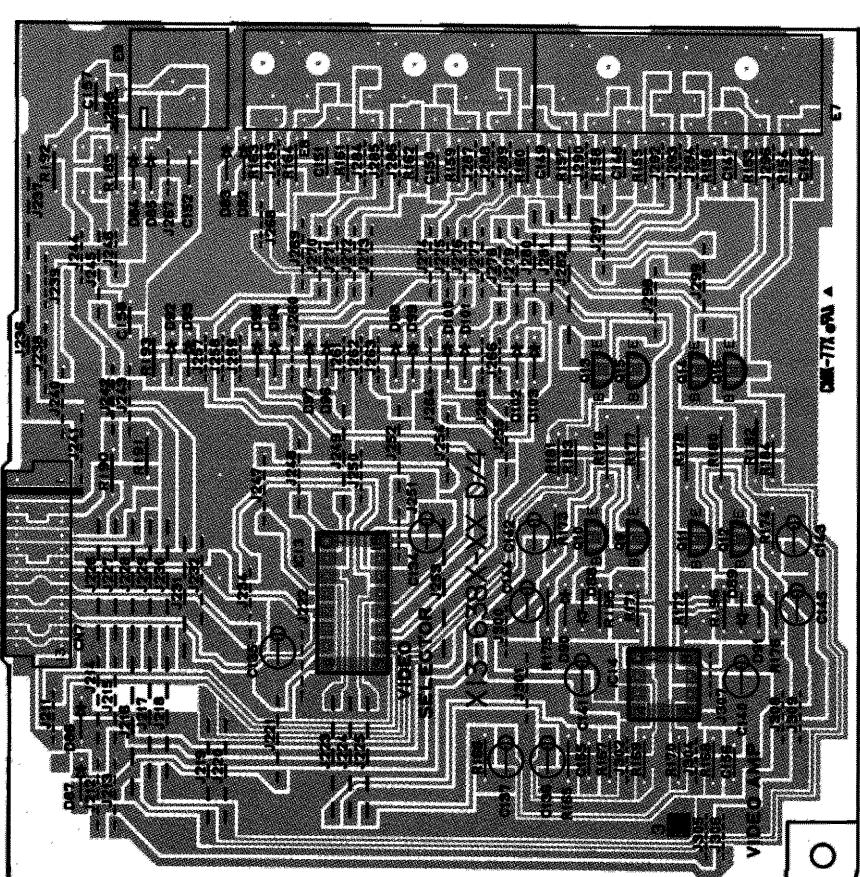
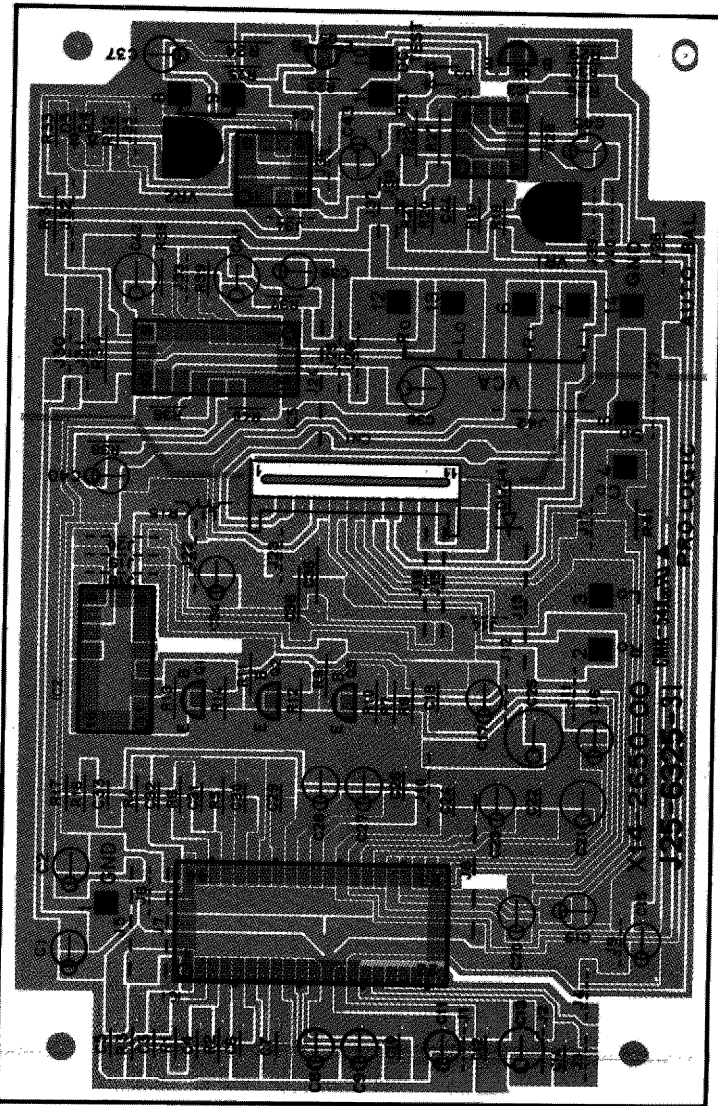


PC BOARD (Component side view)

ACCESSORY UNIT

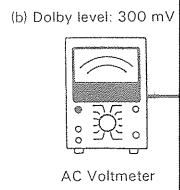
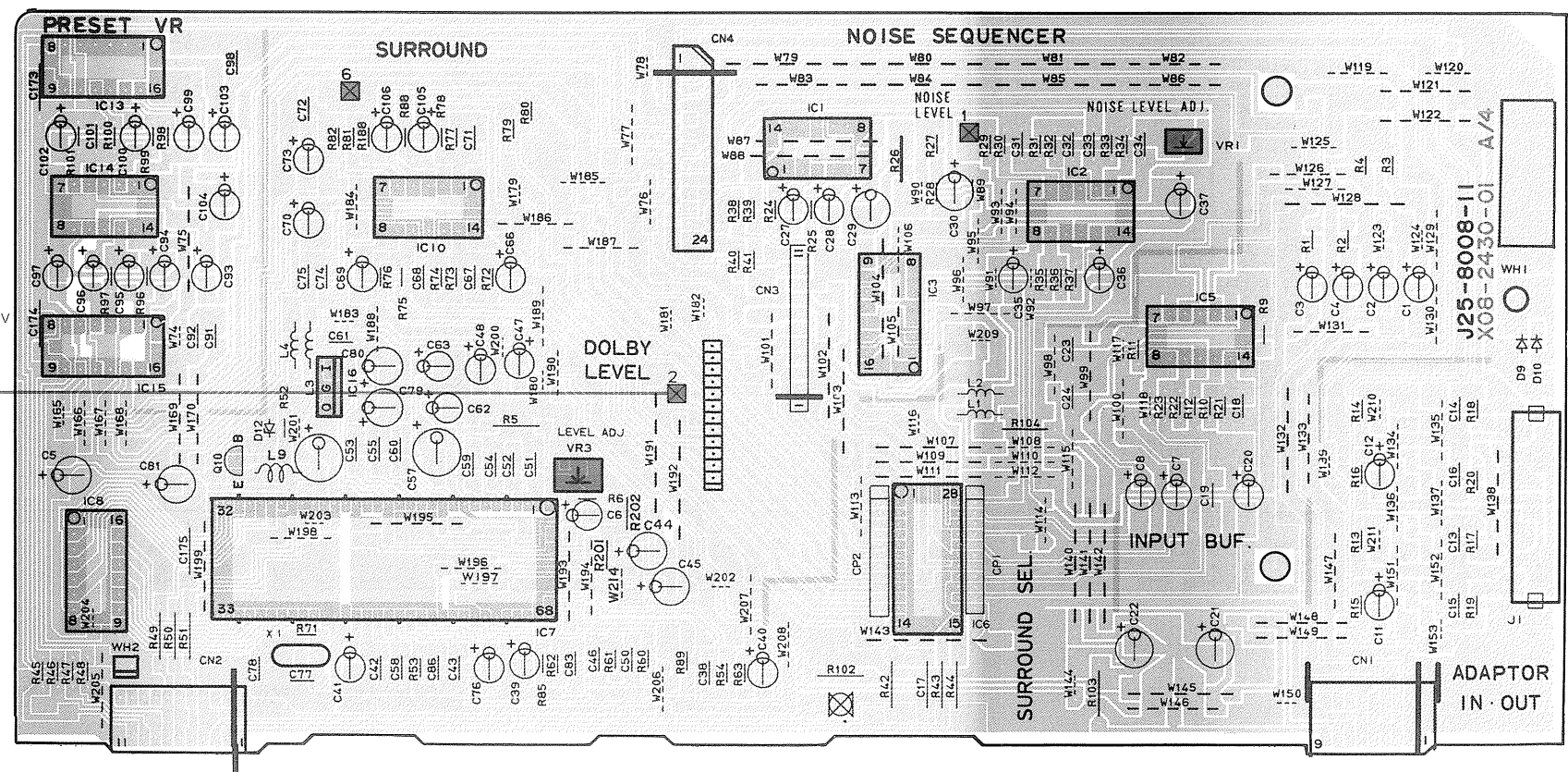
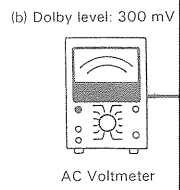
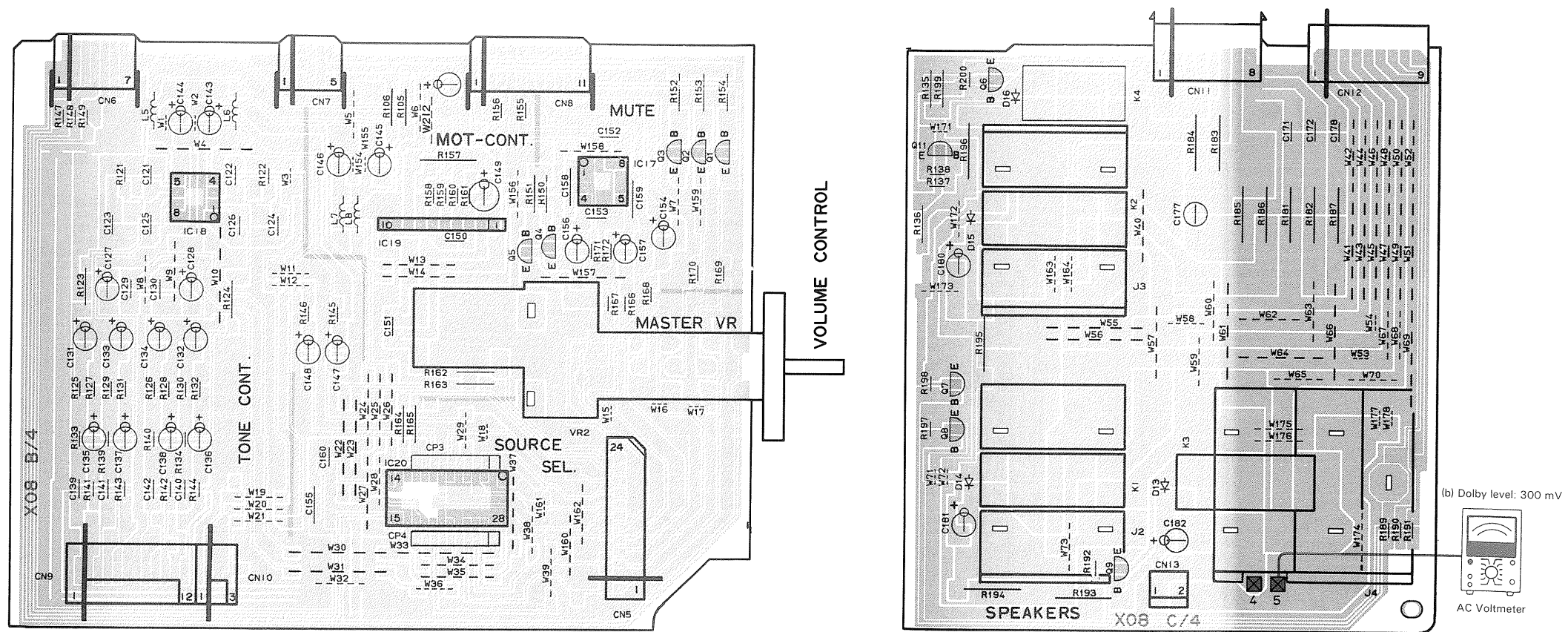


DOLBY UNIT



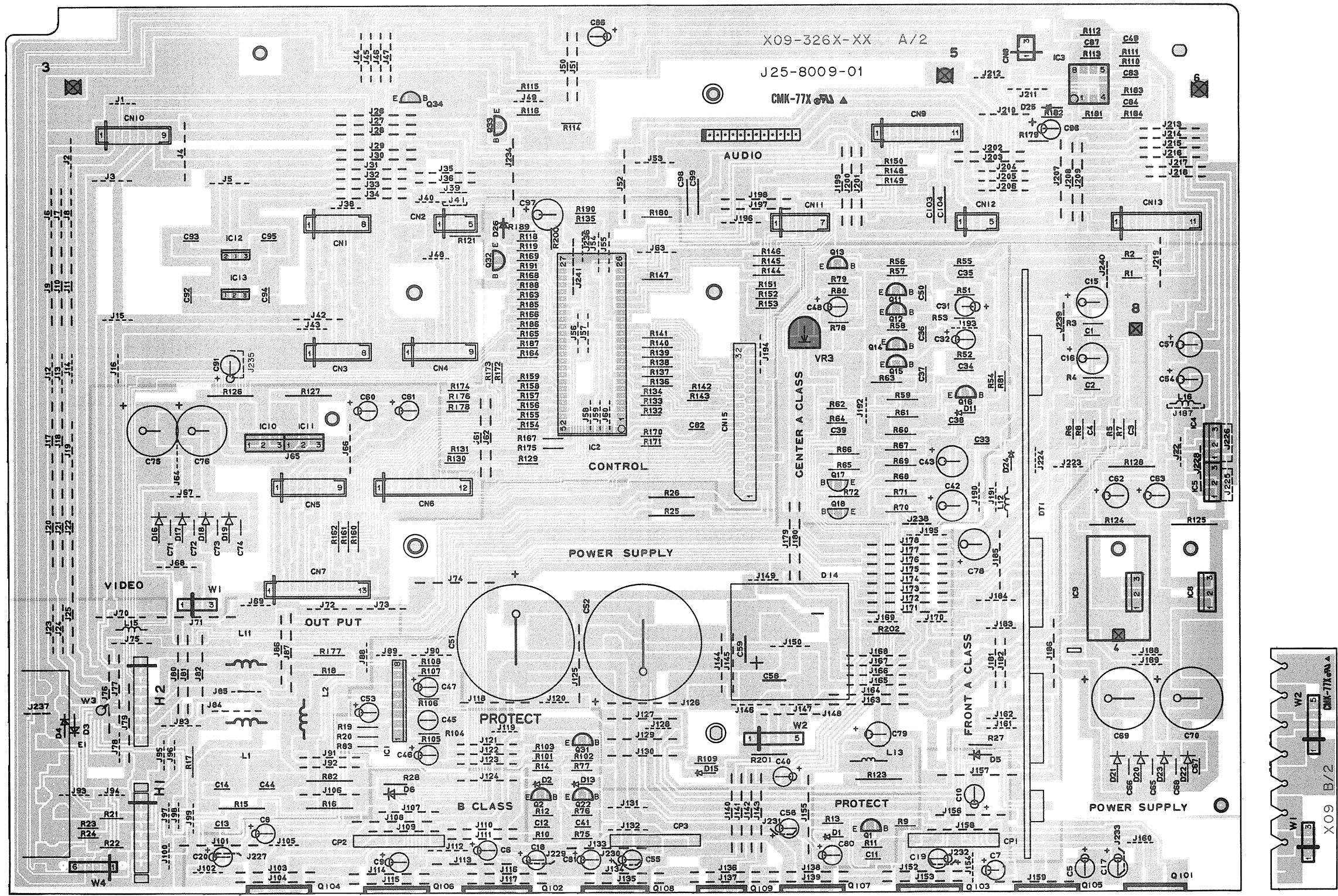
Refer to the schematic diagram for the values of resistors and capacitors.

SURROUND UNIT

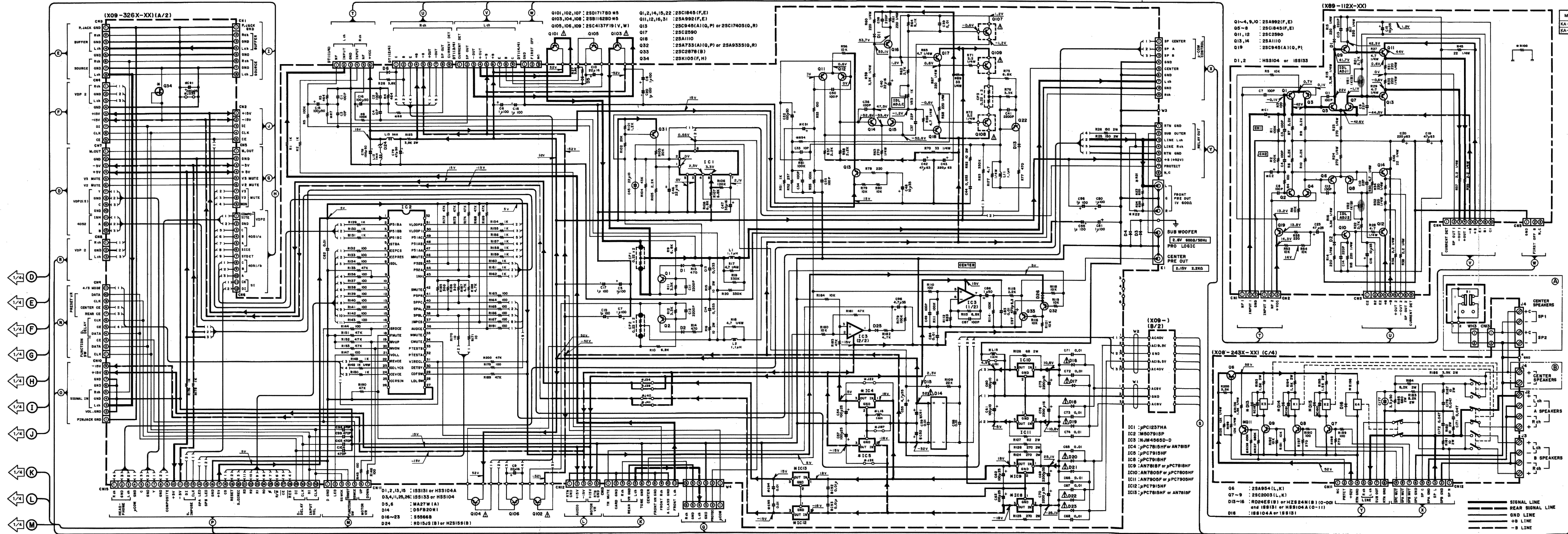


PC BOARD (Foil Side View)

AUDIO UNIT



Refer to the schematic diagram for the values of resistors and capacitors.



MODEL	DESTINATION	REF. NO.	CT. 2	R100
KA-V7500	K, Y, M	0-00	2-72	10μ35 22
KA-V5500	Y, M	0-11	2-71	22μ50 10

DC voltages are as measured with a h...
 ter. Values may vary slightly due to v...
 tidual instruments or/and units.

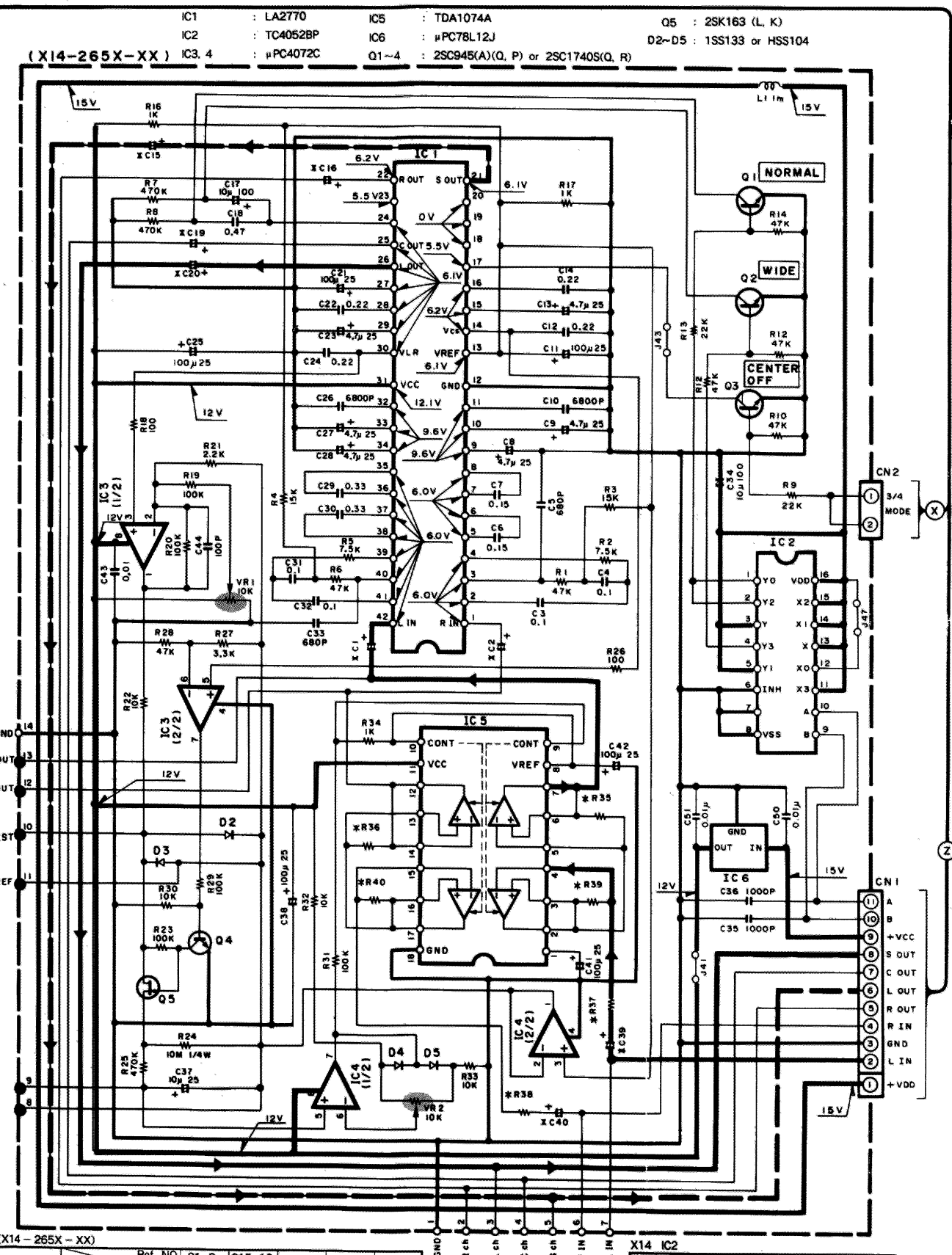
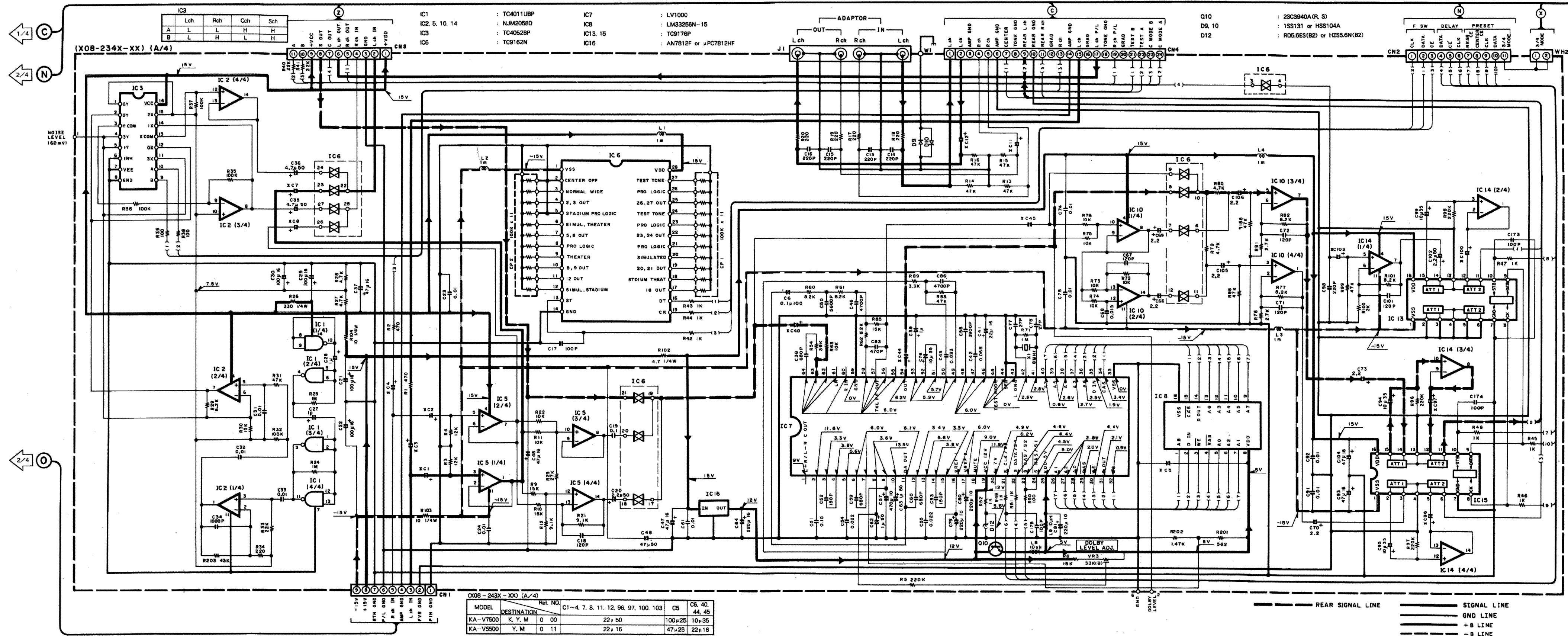
Les tensions c.c. doivent être mesurées...
 haute impédance. Les valeurs peuvent...
 fait des variations inhérentes aux appa...
 de mesure individuels.

Die angegebenen Gleichspannungswerte...
 hochohmigen Spannungsmesser gew...
 ken die Meßwerte aufgrund von Unter...
 zellen Instrumenten oder Geräten u. U...

CAUTION: For continued safety, rep...
 nents only with manufacturer's rec...
 parts list. **⚠** Indicates safety critical...
 risk of electric shock, leakage-current...
 shall be carried out (exposed parts an...
 the supply circuit before the applianc...
 er.

MODEL	DESTINATION	REF. NO.	C31	C51, 52	C54, 57	C91	C92-95	IC4, 5, 12, 13	IC8	IC9	J31, 32, 34-36, 40, 48, 92, 169, 204, 205, 217	J22, 24, 38, 41, 151, 187, 222, 225, 235	L15, 16	Q34	R7, 8, 54	R21, 22
KA-V7500	K, Y, M	0-11	10μ35	1000μ63	YES	YES	YES	YES	μPC7915HF or μPC7815F	AN7818F or μPC7818F	YES	NO	YES	YES	160K	10K
KA-V5500	Y, M	0-12	22μ50	1500μ63	NO	NO	NO	NO	μPC7915HF or μPC7815F	AN7818F or μPC7818F	NO	YES	NO	NO	91K	10K

MODEL	DESTINATION	REF. NO.	⊕	⊙	⊖	C180-182	D13-15	Q 11	R136-138	CN13	J4	R196
KA-V7500	K, Y, M	0-00	YES	NO	NO	YES	RD24ES(B) or HZS24(NB)	YES	YES	YES	E20-1401-05	3.9k2W
KA-V5500	Y, M	0-11	NO	YES	NO	NO	H5S151 or H5S104A	NO	NO	NO	E20-0238-05	2.7k2W



DC voltages are as measured with a high impedance voltmeter. Values may vary slightly due to variations between individual instruments or/and units.

Les tensions c.c. doivent être mesurées avec un voltmètre à haute impédance. Les valeurs peuvent différer légèrement du fait des variations inhérentes aux appareils et aux instruments de mesure individuels.

Die angegebenen Gleichspannungswerte wurden mit einem hochohmigen Spannungsmesser gemessen. Dabei schwanken die Meßwerte aufgrund von Unterschieden zwischen einzelnen Instrumenten oder Geräten u. U. geringfügig.

CAUTION: For continued safety, replace safety critical components only with manufacturer's recommended parts (refer to parts list). Δ indicates safety critical components. To reduce the risk of electric shock, leakage-current or resistance measurements shall be carried out (exposed parts are acceptably insulated from the supply circuit) before the appliance is returned to the customer.

X08-234X-XX (A/4)

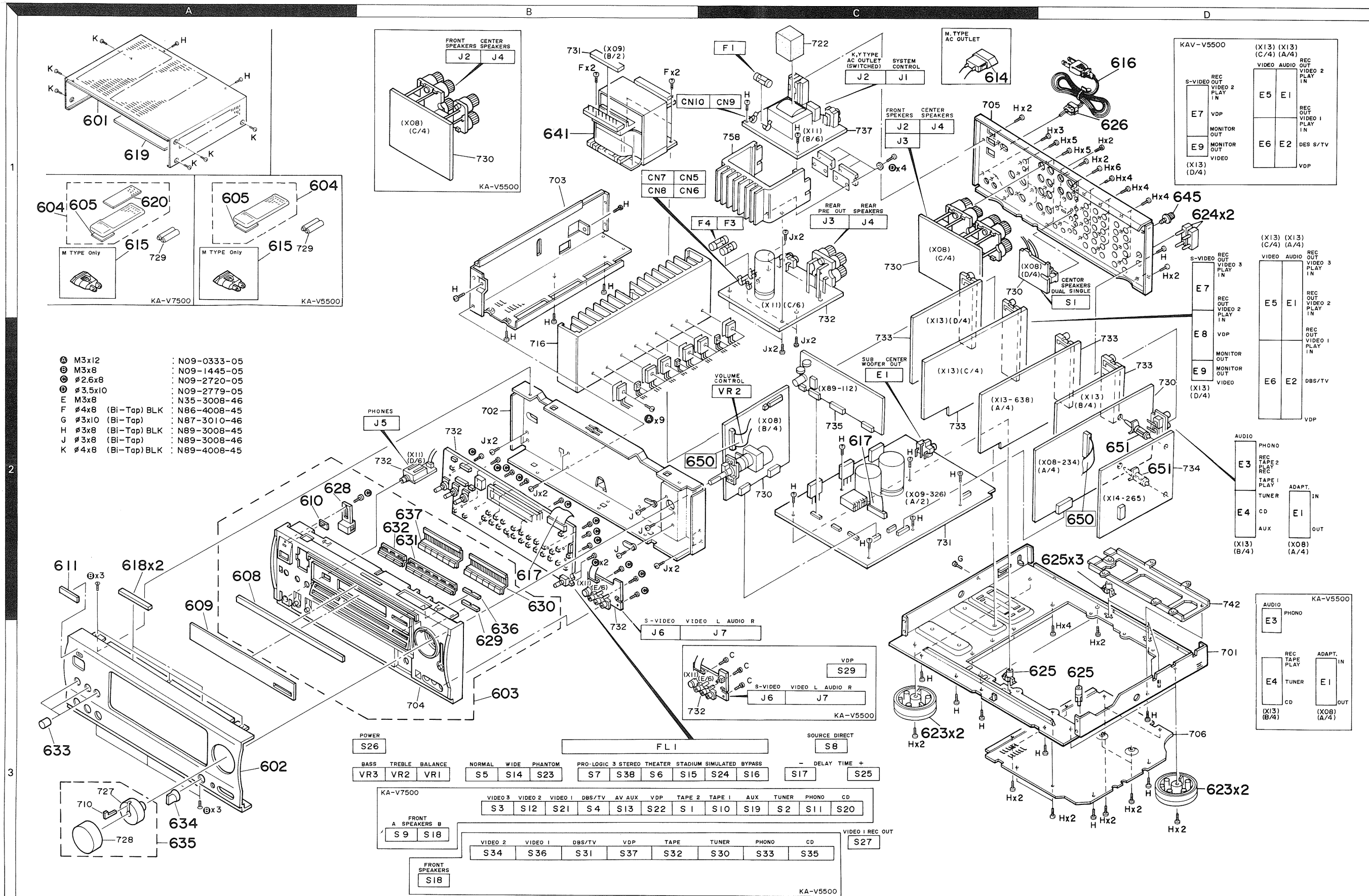
MODEL	DESTINATION	Ref. NO.	C1-4, 7, 8, 11, 12, 96, 97, 100, 103	C5	C6, 40, 44, 45
KA-V7500	K, Y, M	0 00	22 μ 50	100 μ 25	10 μ 35
KA-V5500	Y, M	0 11	22 μ 16	47 μ 25	22 μ 16

X14-265X-XX

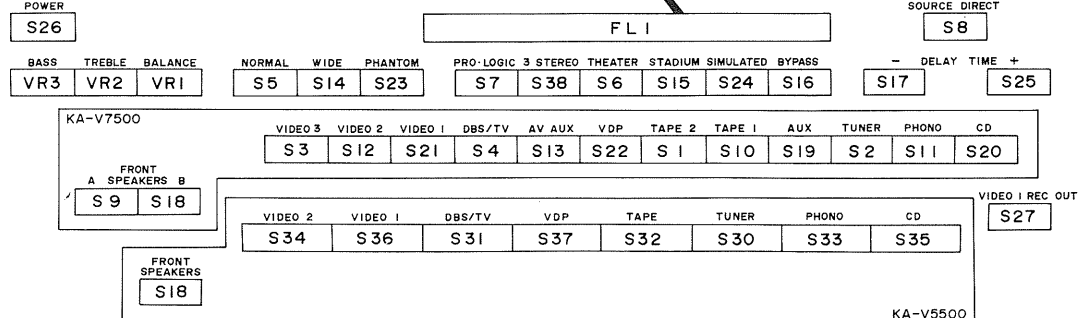
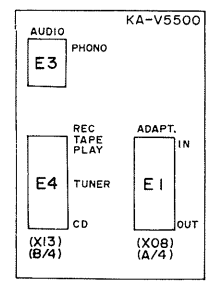
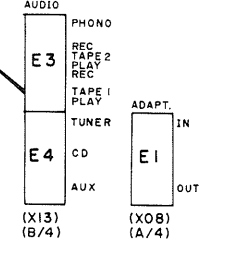
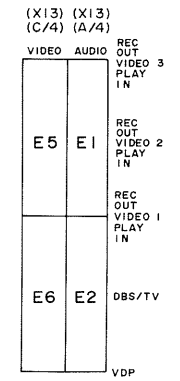
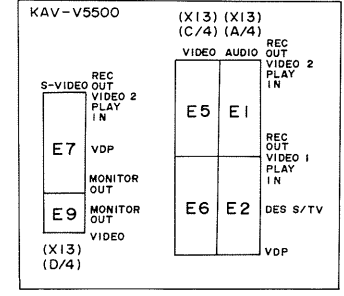
MODEL	DESTINATION	Ref. NO.	C1, 2, 39, 40	C15, 16, 19, 20	R35, 36, R37, 38, R39, 40
KA-V7500	K, Y, M	0-02	10 μ 35	10 μ 35	46.4K, 3.16K, 34.8K
KA-V5500	Y, M	0-03	22 μ 50	2.2 μ 50	47K, 3.3K, 36K

KA-V5500/7500 KA-V5500/7500

EXPLODED VIEW



- A M3x12 : N09-0333-05
- B M3x8 : N09-1445-05
- C Ø2.6x8 : N09-2720-05
- D Ø3.5x10 : N09-2779-05
- E M3x8 : N35-3008-46
- F Ø4x8 (Bi-Tap) BLK : N86-4008-45
- G Ø3x10 (Bi-Tap) : N87-3010-46
- H Ø3x8 (Bi-Tap) BLK : N89-3008-45
- J Ø3x8 (Bi-Tap) : N89-3008-46
- K Ø4x8 (Bi-Tap) BLK : N89-4008-45



KA-V5500/7500

PARTS LIST

× New Parts

Parts without Parts No. are not supplied.

Les articles non mentionnés dans le Parts No. ne sont pas fournis.

Teile ohne Parts No. werden nicht geliefert.

Ref. No. 参照番号	Address 位置	New Parts 新	Parts No. 部品番号	Description 部品名 / 規格	Desti- nation 仕 向	Re- marks 備考
KA-V5500						
601	1A	*	A01-1805-01	METALLIC CABINET		
602	3A	*	A20-6129-02	PANEL		
603	2A, 3B	*	A22-1438-01	SUB PANEL ASSY		
604	1A	*	A70-0376-05	REMOTE CONTROLLER ASSY		
605	1A	*	A09-0088-08	BATTERY COVER		
608	2A, 3A	*	B03-2662-04	DRESSING PLATE		
609	3A	*	B10-1804-03	FRONT GLASS		
610	2A	*	B12-0049-04	INDICATOR		
611	2A	*	B43-0287-04	KENWOOD BADGE		
-			B46-0094-03	WARRANTY CARD	Y	
-			B46-0095-03	WARRANTY CARD	Y	
-			B58-0513-04	CAUTION CARD (PRESET220-240)	Y	
-		*	B60-0200-00	INSTRUCTION MANUAL (ENGLISH)		
-		*	B60-0306-00	INSTRUCTION MANUAL (CHINESE)	M	
614	1C		E03-0055-05	AC OUTLET	M	
615	1A		E03-0115-05	AC PLUG ADAPTER	M	
616	1D		E30-0685-05	AC POWER CORD	Y	
616	1D		E30-2579-05	AC POWER CORD	M	
617	2B, 2C		E31-7257-05	FLAT CABLE X09(CN15)-X11(CN3)		
618	2A		G11-0191-04	SOFT TAPE (90X5X2.5)		
619	1A		G11-1400-04	SOFT TAPE		
-		*	H01-8841-04	ITEM CARTON CASE		
-		*	H10-5046-02	POLYSTYRENE FOAMED FIXTURE		
-		*	H10-5047-02	POLYSTYRENE FOAMED FIXTURE		
-			H25-0225-04	PROTECTION BAG (850X450X0.03)		
-			H25-0232-04	PROTECTION BAG (235X350X0.03)		
623	3C, 3D		J02-1002-05	FOOT		
624	1D		J12-0091-05	PIN		
625	2D, 3D		J19-3179-05	UNIT HOLDER		
626	1D		J42-0083-05	POWER CORD BUSHING		
			J61-0307-05	WIRE BAND		
628	2A		K29-3835-04	KNOB POWER		
629	2B, 3B	*	K29-4006-04	KNOB DELAY TIME		
630	2B	*	K29-4014-03	KNOB INPUT SELECTOR (AUDIO)		
631	2B	*	K29-4008-03	KNOB SURROUND SELECTOR		
632	2B	*	K29-4009-04	KNOB CENTER MODE SELECTOR		
633	3A	*	K29-4010-04	KNOB BASS, TREBLE, BALANCE		
634	3A	*	K29-4011-04	KNOB VIDEO1 REC SELECTOR		
635	3A	*	K29-4012-04	KNOB VOLUME		
636	2B, 3B	*	K29-4035-04	KNOB SOURCE DIRECT		
637	2B	*	K29-4038-03	KNOB INPUT SELECTOR (VIDEO)		
641	1B	*	L07-0156-05	POWER TRANSFORMER		
645	1D		N08-0128-35	BINDING POST (EARTH)		
A	2B, 2C		N09-0333-05	TAPPING SCREW (3X12)		
B	2A, 3A		N09-1445-05	SET SCREW (M3X8)		
C	2B		N09-2720-05	TAPTITE SCREW (2.6X8)		
F	1B		N86-4008-45	BINDING HEAD TAPTITE SCREW		
G	2C		N87-3010-46	BRAZIER HEAD TAPTITE SCREW		
H	1B, 1C		N89-3008-45	BINDING HEAD TAPTITE SCREW		
J	2B		N89-3008-46	BINDING HEAD TAPTITE SCREW		
K	1A		N89-4008-45	BINDING HEAD TAPTITE SCREW		

E: Scandinavia & Europe K: USA P: Canada

Y: PX(Far East, Hawaii) T: England M: Other Areas

Y: AAFES(Europe) X: Australia

5: KA-V5500

7: KA-V7500

⚠ indicates safety critical components.

KA-V5500/7500

PARTS LIST

× New Parts

Parts without Parts No. are not supplied.

Les articles non mentionnés dans le Parts No. ne sont pas fournis.

Teile ohne Parts No. werden nicht geliefert.

Ref. No. 参照番号	Address 位置	New Parts 新	Parts No. 部品番号	Description 部品名 / 規格	Desti- nation 仕 向	Re- marks 備考
Q101, 102			2SC4467LB*5	TRANSISTOR		
Q103, 104			2SA1694LB*5	TRANSISTOR		
Q105, 106			2SC4137F19(V,W)	TRANSISTOR		
Q107			2SC4467LB*5	TRANSISTOR		
Q108			2SA1694LB*5	TRANSISTOR		
Q109			2SC4137F19(V,W)	TRANSISTOR		
KA-V7500						
601	1A		A01-1805-01	METALLIC CABINET		
602	3A	*	A20-6103-02	PANEL		
603	2A, 3B	*	A22-1436-01	SUB PANEL ASSY		
604	1A	*	A70-0375-05	REMOTE CONTROLLER ASSY		
605	1A	*	A09-0086-08	BATTERY COVER		
608	2A, 3A	*	B03-2662-04	DRESSING PLATE		
609	3A	*	B10-1804-03	FRONT GLASS		
610	2A	*	B12-0049-04	INDICATOR		
611	2A	*	B43-0287-04	KENWOOD BADGE		
-			B46-0092-03	WARRANTY CARD		K
-			B46-0094-03	WARRANTY CARD		Y
-			B46-0095-03	WARRANTY CARD		Y
-			B58-0513-04	CAUTION CARD (PRESET220-240)		Y
-		*	B60-0198-00	INSTRUCTION MANUAL (ENGLISH)		
-		*	B60-0305-00	INSTRUCTION MANUAL (CHINESE)	M	
614	1C		E03-0055-05	AC OUTLET	M	
615	1A		E03-0115-05	AC PLUG ADAPTER	M	
616	1D		E30-0685-05	AC POWER CORD	Y	
616	1D		E30-0978-05	AC POWER CORD	K	
616	1D		E30-2579-05	AC POWER CORD	M	
617	2B, 2C		E31-7257-05	FLAT CABLE X09(CN15)-X11(CN3)		
618	2A		G11-0191-04	SOFT TAPE (90X5X2.5)		
619	1A		G11-1400-04	SOFT TAPE		
620	1A		G16-0756-08	WRITING SEET		
-		*	H01-8840-04	ITEM CARTON CASE		
-		*	H10-5046-02	POLYSTYRENE FOAMED FIXTURE		
-		*	H10-5047-02	POLYSTYRENE FOAMED FIXTURE		
-			H25-0225-04	PROTECTION BAG (850X450X0.03)		
-			H25-0232-04	PROTECTION BAG (235X350X0.03)		
623	3C, 3D		J02-1002-05	FOOT		
624	1D		J12-0091-05	PIN		
625	2D, 3D		J19-3179-05	UNIT HOLDER		
626	1D		J42-0083-05	POWER CORD BUSHING		
			J61-0307-05	WIRE BAND		
628	2A		K29-3835-04	KNOB POWER		
629	2B, 3B	*	K29-4006-04	KNOB DELAY TIME		
630	2B	*	K29-4007-03	KNOB INPUT SELECTOR (AUDIO)		
631	2B	*	K29-4008-03	KNOB SURROUND SELECTOR		
632	2B	*	K29-4009-04	KNOB CENTER MODE SELECTOR		
633	3A	*	K29-4010-04	KNOB BASS, TREBLE, BALANCE		
634	3A	*	K29-4011-04	KNOB VIDEO1 RECOUT		
635	3A	*	K29-4012-04	KNOB VOLUME		
636	2B, 3B	*	K29-4035-04	KNOB SOURCE DIRECT		
637	2B	*	K29-4037-03	KNOB INPUT SELECTOR (VIDEO)		
641	1B		L01-8941-15	POWER TRANSFORMER		K
641	1B		L01-8945-15	POWER TRANSFORMER		YM

E: Scandinavia & Europe K: USA P: Canada

Y: PX(Far East, Hawaii) T: England M: Other Areas

Y: AAFES(Europe) X: Australia

5: KA-V5500

7: KA-V7500

⚠ indicates safety critical components.

PARTS LIST

× New Parts

Parts without Parts No. are not supplied.


Les articles non mentionnés dans le Parts No. ne sont pas fournis.

Telle ohne Parts No. werden nicht geliefert.

Ref. No. 参照番号	Address 位置	New Parts 新	Parts No. 部品番号	Description 部品名 / 規格	Desti- nation 仕 向	Re- marks 備考
645	1D		N08-0128-35	BINDING POST (EARTH)		
A	2B, 2C		N09-0333-05	TAPPING SCREW (3X12)		
B	2A, 3A		N09-1445-05	SET SCREW (M3X8)		
C	2B		N09-2720-05	TAPTITE SCREW (2.6X8)		
F	1B		N86-4008-45	BINDING HEAD TAPTITE SCREW		
G	2C		N87-3010-46	BRAZIER HEAD TAPTITE SCREW		
H	1B, 1C		N89-3008-45	BINDING HEAD TAPTITE SCREW		
J	2B		N89-3008-46	BINDING HEAD TAPTITE SCREW		
K	1A		N89-4008-45	BINDING HEAD TAPTITE SCREW		
Q101, 102			2SD1717BD*5	TRANSISTOR		
Q103, 104			2SB1162BD*5	TRANSISTOR		
Q105, 106			2SC4137F19(V, W)	TRANSISTOR		
Q107			2SD1717BD*5	TRANSISTOR		
Q108			2SB1162BD*5	TRANSISTOR		
Q109			2SC4137F19(V, W)	TRANSISTOR		
SURROUND UNIT (X08-2430-00: KA-V7500, 0-11: KA-V5500)						
C1 -4			CE04KW1C220M	ELECTRO 22UF 16WV		5
C1 -4			CE04KW1H220M	ELECTRO 22UF 50WV		7
C5			CE04KW1E101M	ELECTRO 100UF 25WV		7
C5			CE04KW1E470M	ELECTRO 47UF 25WV		5
C6			CE04KW2A0R1M	ELECTRO 0.1UF 100WV		
C7 ,8			CE04KW1C220M	ELECTRO 22UF 16WV		5
C7 ,8			CE04KW1H220M	ELECTRO 22UF 50WV		7
C11 ,12			CE04KW1C220M	ELECTRO 22UF 16WV		5
C11 ,12			CE04KW1H220M	ELECTRO 22UF 50WV		7
C13 -16			CF92FV1H221K	MF 220PF K		
C17			C91-0745-05	CERAMIC 100PF K		
C18			CF92FV1H121K	MF 120PF K		
C19			CF92FV1H104J	MF 0.10UF J		
C20			CE04KW1H2R2M	ELECTRO 2.2UF 50WV		
C21 ,22			CE04KW1C101M	ELECTRO 100UF 16WV		
C23 ,24			CF92FV1H103J	MF 0.010UF J		
C27 ,28			CE04KW1H010M	ELECTRO 1.0UF 50WV		
C29 ,30			CE04KW1C101M	ELECTRO 100UF 16WV		
C31 -33			CK45FF1H103Z	CERAMIC 0.010UF Z		
C34			CK45FB1H102K	CERAMIC 1000PF K		
C35 ,36			CE04KW1H4R7M	ELECTRO 4.7UF 50WV		
C37			CE04KW1C470M	ELECTRO 47UF 16WV		
C38			CF92FV1H681J	MF 680PF J		
C39			CE04KW1H010M	ELECTRO 1.0UF 50WV		
C40			C90-1794-05	ELECTRO 10UF 35WV		7
C40 ,41			CE04KW1C220M	ELECTRO 22UF 16WV		5
C41			CE04KW1C220M	ELECTRO 22UF 16WV		7
C42			CF92FV1H683J	MF 0.068UF J		
C43			CF92FV1H333J	MF 0.033UF J		
C44 ,45			CE04KW1C220M	ELECTRO 22UF 16WV		5
C44 ,45			C90-1794-05	ELECTRO 10UF 35WV		7
C46			CF92FV1H472J	MF 4700PF J		
C47 ,48			CE04KW1C470M	ELECTRO 47UF 16WV		
C50			CF92FV1H562J	MF 5600PF J		
C51			CF92FV1H154J	MF 0.15UF J		
C52 ,53			CF92FV1H151K	MF 150PF K		
C54 ,55			CF92FV1H223J	MF 0.022UF J		
C57			CE04KW1A471M	ELECTRO 470UF 10WV		

E: Scandinavia & Europe K: USA P: Canada
 Y: PX(Far East, Hawaii) T: England M: Other Areas
 Y : AAFES(Europe) X: Australia

5: KA-V5500
 7: KA-V7500

 indicates safety critical components.

PARTS LIST

× New Parts

Parts without Parts No. are not supplied.

Les articles non mentionnés dans le Parts No. ne sont pas fournis.

Telle ohne Parts No. werden nicht geliefert.

Ref. No. 参照番号	Address 位置	New Parts 新	Parts No. 部品番号	Description 部品名 / 規格	Desti- nation 仕 向	Re- marks 備考
C58			CF92FV1H392J	MF 3900PF J		
C59 , 60			CF92FV1H681J	MF 680PF J		
C61			CF92FV1H103J	MF 0.010UF J		
C62 , 63			CE04KW1H010M	ELECTRO 1.0UF 50WV		
C64			CE04KW1C221M	ELECTRO 220UF 16WV		
C66			CE04KW1H2R2M	ELECTRO 2.2UF 50WV		
C67			CF92FV1H121K	MF 120PF K		
C68			CF92FV1H153J	MF 0.015UF J		
C69 , 70			CE04KW1H2R2M	ELECTRO 2.2UF 50WV		
C71 , 72			CF92FV1H121K	MF 120PF K		
C73			CE04KW1H2R2M	ELECTRO 2.2UF 50WV		
C74 , 75			CK45FF1H103Z	CERAMIC 0.010UF Z		
C76			CE04KW1V100M	ELECTRO 10UF 35WV		
C77 , 78			CC45FCH1H270J	CERAMIC 27PF J		
C79 -81			CE04KW1A221M	ELECTRO 220UF 10WV		
C83			CF92FV1H471J	MF 470PF J		
C86			CF92FV1H472J	MF 4700PF J		
C91 , 92			CK45FF1H103Z	CERAMIC 0.010UF Z		
C93			CE04KW1C470M	ELECTRO 47UF 16WV		
C94 , 95			CE04KW1V100M	ELECTRO 10UF 35WV		
C96 , 97			CE04KW1C220M	ELECTRO 22UF 16WV		5
C96 , 97			CE04KW1H220M	ELECTRO 22UF 50WV		7
C98			CF92FV1H221K	MF 220PF K		
C99			CE04KW1V100M	ELECTRO 10UF 35WV		
C100			CE04KW1C220M	ELECTRO 22UF 16WV		5
C100			CE04KW1H220M	ELECTRO 22UF 50WV		7
C101			CF92FV1H121K	MF 120PF K		
C102			CE04KW1H2R2M	ELECTRO 2.2UF 50WV		
C103			CE04KW1C220M	ELECTRO 22UF 16WV		5
C103			CE04KW1H220M	ELECTRO 22UF 50WV		7
C104			CE04KW1C470M	ELECTRO 47UF 16WV		
C105, 106			CE04KW1H2R2M	ELECTRO 2.2UF 50WV		
G121-126			CF92FV1H121K	MF 120PF K		
C127, 128			CE04KW1C220M	ELECTRO 22UF 16WV		5
C127, 128			CE04KW1H220M	ELECTRO 22UF 50WV		7
C129, 130			CF92FV1H561J	MF 560PF J		
C131-134			CE04KW1H010M	ELECTRO 1.0UF 50WV		
C135-138			CE04KW1C220M	ELECTRO 22UF 16WV		5
C135-138			CE04KW1H220M	ELECTRO 22UF 50WV		7
C139-142			CF92FV1H473J	MF 0.047UF J		
C143, 144			CE04KW1V100M	ELECTRO 10UF 35WV		
C145, 146			CE04KW1C101M	ELECTRO 100UF 16WV		
C147, 148			CE04KW1C220M	ELECTRO 22UF 16WV		5
C147, 148			CE04KW1H220M	ELECTRO 22UF 50WV		7
C149			CE04KW1C101M	ELECTRO 100UF 16WV		
C150, 151			CK45FF1H473Z	CERAMIC 0.047UF Z		
C152, 153			CF92FV1H103J	MF 0.010UF J		
C154			CE04KW1C220M	ELECTRO 22UF 16WV		5
C154			CE04KW1H220M	ELECTRO 22UF 50WV		7
C155			C91-0745-05	CERAMIC 100PF K		
C156, 157			CE04KW1V100M	ELECTRO 10UF 35WV		
C158, 159			C91-0745-05	CERAMIC 100PF K		
C160			CF92FV1H104J	MF 0.10UF J		
C171, 172			CF92FV1H473J	MF 0.047UF J		
C173-175			C91-0745-05	CERAMIC 100PF K		

E: Scandinavia & Europe K: USA

P: Canada

5: KA-V5500

Y: PX(Far East, Hawaii)


T: England

M: Other Areas

7: KA-V7500

Y : AAFES(Europe)

X: Australia

 indicates safety critical components.

KA-V5500/7500

PARTS LIST

× New Parts

Parts without Parts No. are not supplied.

Les articles non mentionnés dans le Parts No. ne sont pas fournis.

Telle ohne Parts No. werden nicht geliefert.

Ref. No. 参照番号	Address 位置	New Parts 新	Parts No. 部品番号	Description 部品名 / 規格	Desti- nation 仕 向	Re- marks 備考
C177 C178 C180-182 C183			C90-1351-05 CF92FV1H473J CE04KW1V330M CE04KW1V100M	NP-ELEC 3.3UF 50WV MF 0.047UF J ELECTRO 33UF 35WV ELECTRO 10UF 35WV		7
650 CN4 ,5 J1 J2 -4 J2 ,3	2C, 2D		E31-7258-05 E10-2403-05 E13-0433-05 E20-1401-15 E20-1401-15	FLAT CABLE X08(CN4)-(CN5) FLAT CABLE CONNECTOR PHONE JACK (4P) ADAPTER SCREW TERMINAL BOARD SPEAKERS SCREW TERMINAL BOARD SPEAKERS		7 5
J4			E20-0238-05	SCREW TERMINAL BOARD CENTER SP		5
651	2D		J19-0516-05	UNIT HOLDER		
L1 -8 L9 X1		*	L40-1021-14 L40-1001-17 L77-1184-05	SMALL FIXED INDUCTOR(1.0MH,K) SMALL FIXED INDUCTOR(10UH) CRYSTAL RESONATOR 8MHZ		
CP1 ,2 CP3 ,4 R26 R102,103 R104			R90-0851-05 R90-0493-05 RD14AB2E331JTS R92-0219-05 R92-0341-05	MULTIPLE RESISTOR MULTI-COMP 100KX9 J 1/6W FL-PROOF RD 330 J 1/4W FUSE RESIST 10 G 1/4W FUSE RESIST 4.7 1/4W		
R105,106 R136 R157 R181,182 R183,184			R92-0219-05 RD14AB2E152JTS RS14DB3D100JTE RS14DB3D100JTE RS14DB3D822JTE	FUSE RESIST 10 G 1/4W FL-PROOF RD 1.5K J 1/4W FL-PROOF RS 10 J 2W FL-PROOF RS 10 J 2W FL-PROOF RS 8.2K J 2W		7
R185 R186 R187 R193-195 R196			RS14DB3D681JTE RS14DB3D392JTE RS14DB3D100JTE RS14DB3D152JTE RS14DB3D272JTE	FL-PROOF RS 680 J 2W FL-PROOF RS 3.9K J 2W FL-PROOF RS 10 J 2W FL-PROOF RS 1.5K J 2W FL-PROOF RS 2.7K J 2W		5
R196 R201 R202 VR2 VR3		*	RS14DB3D392JTE RN14BK2C5620FTS RN14BK2C1471FTS R29-4019-15 R12-3131-05	FL-PROOF RS 3.9K J 2W RN 562.0 F 1/6W RN 1.47K F 1/6W POTENTIOMETER(100K X5) VOLUME TRIM POT. 47K		7
K1 -3 K4 S1			S51-2092-05 S51-2090-05 S31-2128-05	MAGNETIC RELAY MICRO SWITCH SLIDE SWITCH CENTER SP SELECT		7
D9 ,10 D9 ,10 D12 D12 D13 -15			HSS104A 1SS131 HZS5.6N(B2) RD5.6ES(B2) HZS24N(B)	DIODE DIODE ZENER DIODE ZENER DIODE ZENER DIODE		7
D13 -15 D13 -16 D13 -16 D16 D16			RD24ES(B) HSS104A 1SS131 HSS104A 1SS131	ZENER DIODE DIODE DIODE DIODE DIODE		7 5 5 7 7
IC1 IC2 IC3 IC5 IC6			TC4011UBP NJM2058D TC4052BP NJM2058D TC9162N	IC(NAND X4) IC(OP AMP X4) IC(4CH MPX/DE-MPX) IC(OP AMP X4) IC(ANALOG SWITCH ARRAY)		

E: Scandinavia & Europe K: USA P: Canada
Y: PX(Far East, Hawaii) T: England M: Other Areas
Y : AAFES(Europe) X: Australia

5: KA-V5500
7: KA-V7500

△ indicates safety critical components.

KA-V5500/7500

PARTS LIST

× New Parts

Parts without Parts No. are not supplied.

Les articles non mentionnés dans le Parts No. ne sont pas fournis.

Telle ohne Parts No. werden nicht geliefert.

Ref. No. 参照番号	Address 位置	New Parts 新	Parts No. 部品番号	Description 部品名 / 規格	Desti- nation 仕 向	Re- marks 備考
IC7		*	LV1000	IC		
IC8		*	LM33256N-15	IC		
IC10			NJM2058D	IC(OP AMP X4)		
IC13			TC9176P	IC(2CH ELECTRONIC VOLUME)		
IC14			NJM2058D	IC(OP AMP X4)		
IC15			TC9176P	IC(2CH ELECTRONIC VOLUME)		
IC16			AN7812F	IC(VOLTAGE REGULATOR/ +12V)		
IC16			UPC7812HF	IC(VOLTAGE REGULATOR/ +12V)		
IC17, 18			NJM4560D-A	IC(OP AMP X2)		
IC19			BA6209N	IC(MOTOR DRIVER)		
IC20			TC9163N	IC(BILATERAL SWITCH X16)		
Q1 -5			2SC2878(B)	TRANSISTOR		
Q6			2SA954(L, K)	TRANSISTOR		
Q7 -9			2SC2003(L, K)	TRANSISTOR		
Q10			2SC3940A(R, S)	TRANSISTOR		
Q11			2SC2003(L, K)	TRANSISTOR		7
AUDIO UNIT (X09-3260-11: KA-V7500, 0-12: KA-V5500)						
C1 ,2			CC45FSL1H101J	CERAMIC 100PF J		5
C1 ,2			CF92FV1H101K	MF 100PF K		7
C3 ,4			CC45FSL1H100D	CERAMIC 10PF D		5
C3 ,4			C91-0166-05	POLYSTY 10PF D		7
C5 -8			CE04KW2A010M	ELECTRO 1.0UF 100WV		
C9 ,10			CE04KW1C220M	ELECTRO 22UF 16WV		
C11 ,12			CK45FB1H222K	CERAMIC 2200PF K		
C13 ,14			CF92FV1H333J	MF 0.033UF J		
C15 ,16			CE04KW1H101M	ELECTRO 100UF 50WV		
C17 -20			CE04KW2A010M	ELECTRO 1.0UF 100WV		
C31			CE04KW1H2R2M	ELECTRO 2.2UF 50WV		5
C31			C90-1794-05	ELECTRO 10UF 35WV		7
C32			CE04KW1H101M	ELECTRO 100UF 50WV		
C33			CC45FSL1H100D	CERAMIC 10PF D		5
C33			C91-0166-05	POLYSTY 10PF D		7
C34 ,35			CF92FV1H101K	MF 100PF K		
C36			CC45FSL1H101J	CERAMIC 100PF J		
C37			CC45FSL1H220J	CERAMIC 22PF J		
C38			CC45FSL1H221J	CERAMIC 220PF J		
C39			CK45FF1H103Z	CERAMIC 0.010UF Z		
C40			CE04KW1C220M	ELECTRO 22UF 16WV		
C41			CK45FB1H222K	CERAMIC 2200PF K		
C42 ,43			CE04KW1J470M	ELECTRO 47UF 63WV		
C44			CF92FV1H333J	MF 0.033UF J		
C45			C90-1333-05	NP-ELEC 22UF 10WV		
C46			CE04KW1C220M	ELECTRO 22UF 16WV		
C47			CE04KW1C330M	ELECTRO 33UF 16WV		
C48			CE04KW1V100M	ELECTRO 10UF 35WV		
C49			CC45FSL1H101J	CERAMIC 100PF J		
C50			CF92FV1H101K	MF 100PF K		
C51 ,52			C90-1317-05	ELECTRO 7500UF 63WV		5
C51 ,52		*	C90-1816-05	ALMINIUM ELECTROLYTIC C.		7
C53			CE04KW1V4R7M	ELECTRO 4.7UF 35WV		
C54			CE04KW1E101M	ELECTRO 100UF 25WV		7
C55 ,56			CE04KW2A010M	ELECTRO 1.0UF 100WV		
C57			CE04KW1E101M	ELECTRO 100UF 25WV		7
C58 ,59		*	C91-1416-05	MP 0.01UF 250VDC		

E: Scandinavia & Europe K: USA P: Canada

5: KA-V5500

Y: PX(Far East, Hawaii) T: England M: Other Areas

7: KA-V7500

Y : AAFES(Europe) X: Australia

△ indicates safety critical components.

KA-V5500/7500

PARTS LIST

× New Parts

Parts without Parts No. are not supplied.


Les articles non mentionnés dans le Parts No. ne sont pas fournis.

Telle ohne Parts No. werden nicht geliefert.

Ref. No. 参照番号	Address 位置	New Parts 新	Parts No. 部品番号	Description 部品名 / 規格	Desti- nation 仕向	Re- marks 備考
C60 ,61 C62 ,63 C65 -68 C69 ,70 C71 -74			CE04KW1A101M CE04KW1E101M CK45FF1H103Z CE04KW1V222M CK45FF1H103Z	ELECTRO 100UF 10WV ELECTRO 100UF 25WV CERAMIC 0.010UF Z ELECTRO 2200UF 35WV CERAMIC 0.010UF Z		
C75 ,76 C78 C78 C79 C80 ,81			CE04KW1C222M CE04KW1H101M C90-1789-05 CE04KW1H470M CE04KW2A010M	ELECTRO 2200UF 16WV ELECTRO 100UF 50WV ELECTRO 100UF 50WV ELECTRO 47UF 50WV ELECTRO 1.0UF 100WV		5 7
C82 -84 C86 C87 C91 C92 -95			CK45FF1H103Z CE04KW1H010M CC45FSL1H101J CE04KW1E221M CF92FV1H103J	CERAMIC 0.010UF Z ELECTRO 1.0UF 50WV CERAMIC 100PF J ELECTRO 220UF 25WV MF 0.010UF J		7 7
C96 C97 C98 ,99 C103,104			CE04KW1V4R7M CE04KW0J471M C91-0753-05 C91-0753-05	ELECTRO 4.7UF 35WV ELECTRO 470UF 6.3WV CHIP C 470PF K CHIP C 470PF K		
CN15 E1			E10-3201-05 E13-1403-05	FLAT CABLE CONNECTOR PHONE JACK PREOUT ,SUB WOOFER		
L1 ,2 L11 L12 ,13 L15 ,16			L39-0080-15 L39-0080-15 L40-1021-14 L40-1021-14	PHASE-COMPENSATION COIL PHASE-COMPENSATION COIL SMALL FIXED INDUCTOR(1.0MH,K) SMALL FIXED INDUCTOR(1.0MH,K)		7
E H	2C 2C		N35-3008-46 N89-3008-45	BINDING HEAD MACHINE SCREW BINDING HEAD TAPTITE SCREW		
CP1 -3 R3 ,4 R15 ,16 R17 ,18 R25 ,26			R90-0187-05 RN14BK2C4640FTS RS14DB3D100JTE RD14AB2E4R7JTS RS14DB3D151JTE	MULTI-COMP 0.22X2 K 5W RN 464.0 F 1/6W FL-PROOF RS 10 J 2W FL-PROOF RD 4.7 J 1/4W FL-PROOF RS 150 J 2W		
R52 R59 R60 ,61 R63 R65 ,66		*	RN14BK2C2370FTS RD14AB2E332JTS RD14AB2E221JTS RD14AB2E271JTS RD14AB2E4R7JTS	RN 237.0 F 1/6W FL-PROOF RD 3.3K J 1/4W FL-PROOF RD 220 J 1/4W FL-PROOF RD 270 J 1/4W FL-PROOF RD 4.7 J 1/4W		
R67 ,68 R69 ,70 R71 ,72 R82 R123			RD14AB2E221JTS RD14AB2E330JTS RD14AB2E2R2JTS RS14DB3D100JTE RS14DB3D392JTE	FL-PROOF RD 220 J 1/4W FL-PROOF RD 33 J 1/4W FL-PROOF RD 2.2 J 1/4W FL-PROOF RS 10 J 2W FL-PROOF RS 3.9K J 2W		
R124 ,125 R126 R127 R128 R177			RS14DB3D271JTE RS14DB3D680JTE RS14DB3D620JTE RS14DB3D271JTE RD14AB2E4R7JTS	FL-PROOF RS 270 J 2W FL-PROOF RS 68 J 2W FL-PROOF RS 82 J 2W FL-PROOF RS 270 J 2W FL-PROOF RD 4.7 J 1/4W		
VR3			R12-1083-05	TRIM POT. 1K		
D1 ,2 D1 ,2 D3 ,4 D3 ,4 D5 ,6			HSS104A 1SS131 HSS104 1SS133 MA27W(A)	DIODE DIODE DIODE DIODE VARISTOR		

E: Scandinavia & Europe K: USA P: Canada
Y: PX(Far East, Hawaii) T: England M: Other Areas
Y : AAFES(Europe) X: Australia

5: KA-V5500
7: KA-V7500

 indicates safety critical components.

PARTS LIST

× New Parts

Parts without Parts No. are not supplied.

Les articles non mentionnes dans le Parts No. ne sont pas fournis.

Telle ohne Parts No. werden nicht geliefert.

Ref. No. 参照番号	Address 位置	New Parts 新	Parts No. 部品番号	Description 部品名 / 規格	Desti- nation 仕向	Re- marks 備考
D11			HSS104	DIODE		
D11			1SS133	DIODE		
D13			HSS104A	DIODE		
D13			1SS131	DIODE		
D14			D5FB20*1	DIODE		
D15			HSS104A	DIODE		
D15			1SS131	DIODE		
D16 -23			S5566B	DIODE		
D24			HZS15S(B)	ZENER DIODE		
D24			RD15JS(B)	ZENER DIODE		
D25 ,26			HSS104	DIODE		
D25 ,26			1SS133	DIODE		
IC1			UPC1237HA	IC(POWER AMP)		
IC2			M50791SP	IC		
IC3			NJM4565D-D	IC(OP AMP X2)		
IC4			AN7815F	IC(VOLTAGE REGULATOR/ +15V)		7
IC4			UPC7815HF	IC(VOLTAGE REGULATOR/ +15V)		7
IC5			UPC7915HF	IC(VOLTAGE REGULATOR/ -15V)		7
IC8			UPC7915HF	IC(VOLTAGE REGULATOR/ -15V)		5
IC8			UPC7918HF	IC(VOLTAGE REGULATOR/ -18V)		7
IC9			AN7815F	IC(VOLTAGE REGULATOR/ +15V)		5
IC9			AN7818F	IC(VOLTAGE REGULATOR/ +18V)		7
IC9			UPC7815HF	IC(VOLTAGE REGULATOR/ +15V)		5
IC9			UPC7818HF	IC(VOLTAGE REGULATOR/ +18V)		7
IC10			AN7805F	IC(VOLTAGE REGULATOR/ +5V)		
IC10			UPC7805HF	IC(VOLTAGE REGULATOR/ +5V)		
IC11			AN7905F	IC(VOLTAGE REGULATOR/ -5V)		
IC11			UPC7905HF	IC(VOLTAGE REGULATOR/ -5V)		
IC12			UPC7915HF	IC(VOLTAGE REGULATOR/ -15V)		7
IC13			AN7815F	IC(VOLTAGE REGULATOR/ +15V)		7
IC13			UPC7815HF	IC(VOLTAGE REGULATOR/ +15V)		7
Q1 ,2			2SC1845(F,E)	TRANSISTOR		
Q11 ,12			2SA992(F,E)	TRANSISTOR		
Q13			2SC1740S(Q,R)	TRANSISTOR		
Q13			2SC945(A)(Q,P)	TRANSISTOR		
Q14 ,15			2SC1845(F,E)	TRANSISTOR		
Q16			2SA992(F,E)	TRANSISTOR		
Q17			2SC2590	TRANSISTOR		
Q18			2SA1110	TRANSISTOR		
Q22			2SC1845(F,E)	TRANSISTOR		
Q31			2SA992(F,E)	TRANSISTOR		
Q32			2SA733(A)(Q,P)	TRANSISTOR		
Q32			2SA933S(Q,R)	TRANSISTOR		
Q33			2SC2878(B)	TRANSISTOR		
Q34			2SK105(F,H)	FET		7
CONTROL UNIT (X11-298X-XX)						
D15 -18			B30-1012-05	LED(SLP-981C-50)		
C1 ,2			CE04KW1H010M	ELECTRO 1.0UF 50WV		5
C1 ,2			C90-1794-05	ELECTRO 10UF 35WV		7
C3 ,4			CC45FSL1H101J	CERAMIC 100PF J		
C5 ,6			CE04KW1C220M	ELECTRO 22UF 16WV		
C7 ,8			CC45FSL1H100D	CERAMIC 10PF D		
C9 ,10			CC45FSL1H470J	CERAMIC 47PF J		
C11 -14			CF92FV1H104J	MF 0.10UF J		

E: Scandinavia & Europe K: USA P: Canada

5: KA-V5500

Y: PX(Far East, Hawaii) T: England M: Other Areas

7: KA-V7500

Y :AAFES(Europe) X: Australia

⚠ indicates safety critical components.

KA-V5500/7500

PARTS LIST

× New Parts

Parts without Parts No. are not supplied.

Les articles non mentionnés dans le Parts No. ne sont pas fournis.

Teile ohne Parts No. werden nicht geliefert.

Ref. No. 参照番号	Address 位置	New Parts 新	Parts No. 部品番号	Description 部品名 / 規格	Desti- nation 仕 向	Re- marks 備考
C15 -18			CF92FV1H393J	MF 0.039UF J		
C19			CE04KWOJ331M	ELECTRO 330UF 6.3WV		
C20			CK45FF1H103Z	CERAMIC 0.010UF Z		
C21 ,22			CK45FB1H152K	CERAMIC 1500PF K		
C23			CK45FF1H103Z	CERAMIC 0.010UF Z		
C24			C91-0749-05	CERAMIC 220PF K		
C25 ,26			CF92FV1H472J	MF 4700PF J		
C30 ,31		*	C91-1416-05	MP 0.01UF 250VDC		
C32 ,33			C90-0412-05	ELECTRO 6800UF 35WV		
C34			CE04KW1V330M	ELECTRO 33UF 35WV		
C40 ,41			CF92FV1H221K	MF 220PF K		
C42 ,43			CK45FF1H103Z	CERAMIC 0.010UF Z		
C44			CE04KW1E470M	ELECTRO 47UF 25WV		
C45			CE04KW1V101M	ELECTRO 100UF 35WV		
C46			CE04KW1A101M	ELECTRO 100UF 10WV		
C47			CE04KW1C330M	ELECTRO 33UF 16WV		
C48			CE04KW1E102M	ELECTRO 1000UF 25WV		
C49			CE04KW1H471M	ELECTRO 470UF 50WV		
C50 -54			CK45FF1H103Z	CERAMIC 0.010UF Z		
C55 -57			C91-0971-05	FILM 0.01UF 250WV	K	7
C55 -57			C91-1421-05	FILM 0.01UF 250AC		5
C55 -57			C91-1421-05	FILM 0.01UF 250AC	YM	7
C59			CK45FF1H223Z	CERAMIC 0.022UF Z		
C60 ,61			CC45FSL1H221J	CERAMIC 220PF J		
C62			CF92FV1H474J	MF 0.47UF J		
C63			CE04JW1V100M	ELECTRO 10UF 35WV		
C64			CK45FF1H103Z	CERAMIC 0.010UF Z		
C66			C91-0753-05	CHIP C 470PF K		
C67			C90-1826-05	BACKUP 0.047F 5.5WV		
C68 ,69			C91-0753-05	CHIP C 470PF K		
C70 ,71			CK45FB1H471K	CERAMIC 470PF K		
C72			CK45FF1H103Z	CERAMIC 0.010UF Z		
C79 ,80			CK45FB1H471K	CERAMIC 470PF K		
C90			CE04KW1V330M	ELECTRO 33UF 35WV		7
C91			CK45FF1H103Z	CERAMIC 0.010UF Z		
CN3			E10-3202-05	FLAT CABLE CONNECTOR		
J1			E11-0188-05	PHONE JACK SYSTEM CONTROL		
J2			E03-0111-05	AC OUTLET	Y	5
J2			E03-0111-05	AC OUTLET	KY	7
J3		*	E20-1402-15	SCREW TERMINAL BOARD SP OUT		
J4			E13-0254-05	PHONE JACK (2P) PRE OUT		
J5			E11-0189-05	PHONE JACK PHONES		
J6			E06-0410-05	CYLINDRICAL RECEPTACLE S VIDEO		
J7			E13-0312-05	PHONE JACK VIDEO(AUDIO)		
F1			F05-6029-05	FUSE (UL)	K	7
F1 -4			F05-3121-05	FUSE (SEMKO) (250V T3.15A)	M	7
F1 -4			F05-3123-05	FUSE (250V 3.15A)	Y	7
F1 ,2			F05-2525-05	FUSE (SEMKO) (250V T2.5A)	M	5
F1 ,2			F06-2526-05	FUSE (250V2.5A)	Y	5
F3 ,4			F05-3121-05	FUSE (SEMKO) (250V T3.15A)	M	5
F3 ,4			F05-3123-05	FUSE (250V 3.15A)	Y	5
F3 ,4			F06-3027-05	FUSE (UL)	K	7
CN5 -10			J13-0075-05	FUSE CLIP	K	7
CN5 -12			J13-0075-05	FUSE CLIP		5

E: Scandinavia & Europe K: USA

P: Canada

5: KA-V5500

Y: PX(Far East, Hawaii)


T: England

M: Other Areas

7: KA-V7500

Y :AAFES(Europe)

X: Australia

 indicates safety critical components.

KA-V5500/7500

PARTS LIST

× New Parts

Parts without Parts No. are not supplied.

Les articles non mentionnés dans le Parts No. ne sont pas fournis.

Teile ohne Parts No. werden nicht geliefert.

Ref. No. 参照番号	Address 位置	New Parts 新	Parts No. 部品番号	Description 部品名 / 規格	Desti- nation 仕向	Re- marks 備考
CN5 -12			J13-0075-05	FUSE CLIP	YM	7
L1 ,2			L39-0085-05	PHASE-COMPENSATION COIL		
L3			L40-1021-14	SMALL FIXED INDUCTOR(1.0MH,K)		
T1			L07-0032-15	POWER TRANSFORMER	M	
T1			L07-0073-05	POWER TRANSFORMER	Y	5
T1			L07-0073-05	POWER TRANSFORMER	KY	7
X1			L78-0218-05	RESONATOR 4.19MHz		
D	1C	*	N09-2779-05	TAPPING SCREW (3.5X10)		
J	1C, 2C		N89-3008-46	BINDING HEAD TAPTITE SCREW		
R13 ,14			RS14DB3D100JTE	FL-PROOF RS 10 J 2W		
R15 ,16			RD14AB2E100JTS	FL-PROOF RD 10 J 1/4W		
R17 ,18			RS14DB3D100JTE	FL-PROOF RS 10 J 2W		
R31			RS14DB3A221JTE	FL-PROOF RS 220 J 1W		
R45 ,46			RD14AB2E431JTS	FL-PROOF RD 430 J 1/4W		
VR1		*	R01-3052-05	POTENTIOMETER BALANCE		
VR2 ,3		*	R06-2023-05	POTENTIOMETER BASS, TREBLE		
K1			S51-2092-05	MAGNETIC RELAY		
K2			S51-1052-05	MAGNETIC RELAY		
S1 -26			S40-1064-05	PUSH SWITCH KEY BOARD		7
S5 -9			S40-1064-05	PUSH SWITCH KEY BOARD		5
S14 -18			S40-1064-05	PUSH SWITCH KEY BOARD		5
S23 -26			S40-1064-05	PUSH SWITCH KEY BOARD		5
S27		*	S29-1157-05	ROTARY SWITCH VIDEO1 REC SEL		7
S27		*	S29-1158-05	ROTARY SWITCH VIDEO1 REC SEL		5
S28			S31-3010-05	SLIDE SWITCH VOLTAGE SELECTOR		5
S28			S31-3010-05	SLIDE SWITCH VOLTAGE SELECTOR	YM	7
S29			S40-2323-05	PUSH SWITCH VDP		5
S30 -38			S40-1064-05	PUSH SWITCH KEY BOARD		5
S38			S40-1064-05	PUSH SWITCH KEY BOARD		7
D1			RBV-402LFA	DIODE		
D2			HSS104A	DIODE		5
D2			HZS24N(B)	ZENER DIODE		7
D2			RD24ES(B)	ZENER DIODE		7
D2			1SS131	DIODE		5
D5			HSS104	DIODE		
D5			1SS133	DIODE		
D6			HSS104A	DIODE		
D6			1SS131	DIODE		
D7 ,8			HSS104	DIODE		
D7 ,8			1SS133	DIODE		
D9			HZS8.2N(B)	ZENER DIODE		
D9			RD8.2ES(B)	ZENER DIODE		
D10 -13			S5566B	DIODE		
D14			HZS13N(B2)	ZENER DIODE		
D14			RD13ES(B2)	ZENER DIODE		
D19 ,20			HZS5.1N(B2)	ZENER DIODE		
D19 ,20			RD5.1ES(B2)	ZENER DIODE		
D21			HSS104	DIODE		
D21			1SS133	DIODE		
D22			HSS104A	DIODE		
D22			1SS131	DIODE		
D23 -29			HSS104	DIODE		7


E: Scandinavia & Europe K: USA P: Canada

Y: PX(Far East, Hawaii) T: England M: Other Areas

Y : AAFES(Europe) X: Australia

5: KA-V5500

7: KA-V7500

 indicates safety critical components.

PARTS LIST

× New Parts

Parts without Parts No. are not supplied.

Les articles non mentionnes dans le Parts No. ne sont pas fournis.

Teile ohne Parts No. werden nicht geliefert.

Ref. No. 参照番号	Address 位置	New Parts 新	Parts No. 部品番号	Description 部品名 / 規格	Desti- nation 仕 向	Re- marks 備考
D23 -29			1SS133	DIODE		7
D23 -54			HSS104	DIODE		5
D23 -54			1SS133	DIODE		5
D31 -39			HSS104	DIODE		7
D31 -39			1SS133	DIODE		7
D41 -54			HSS104	DIODE		7
D41 -54			1SS133	DIODE		7
D59			HSS104	DIODE		
D59			1SS133	DIODE		
D60			S5566B	DIODE		
D61 -64			HSS104	DIODE		
D61 -64			1SS133	DIODE		
D70 -74			HSS104	DIODE		7
D70 -74			1SS133	DIODE		7
D71 -73			HSS104	DIODE		5
D71 -73			1SS133	DIODE		5
FL1		*	FIP10EM9	FLUORESCENT INDICATOR TUBE		
IC1		*	UPD75216ACW-B40	IC(MICROPROCESSOR)		
IC2			M6M80021P	IC(CMOS EEPROM)		
IC3			AN7805F	IC(VOLTAGE REGULATOR/ +5V)		
IC3			UPC7805HF	IC(VOLTAGE REGULATOR/ +5V)		
IC4 ,5			UPC1188H-X	IC(AF POWER AMP 20WX2)		
IC6			UPC7915HF	IC(VOLTAGE REGULATOR/ -15V)		
Q1			2SC1740S(Q,R)	TRANSISTOR		
Q1			2SC945(A)(Q,P)	TRANSISTOR		
Q2			2SA733(A)(Q,P)	TRANSISTOR		
Q2			2SA933S(Q,R)	TRANSISTOR		
Q3			2SC1740S(Q,R)	TRANSISTOR		
Q3			2SC945(A)(Q,P)	TRANSISTOR		
Q4			DTA114ES	DIGITAL TRANSISTOR		
Q5			2SC1740S(Q,R)	TRANSISTOR		
Q5			2SC945(A)(Q,P)	TRANSISTOR		
Q6			2SC2003(L,K)	TRANSISTOR		
Q7 -11			2SC1740S(Q,R)	TRANSISTOR		
Q7 -11			2SC945(A)(Q,P)	TRANSISTOR		
A1			W02-0975-05	ELECTRIC CIRCUIT MODULE		
ACCESSORY UNIT (X13-6380-03: KA-V5500, 0-12: KA-V7500)						
C1 -14			CF92FV1H221K	MF 220PF K		7
C5 -12			CC45FSL1H221J	CERAMIC 220PF J		5
C13 ,14			CF92FV1H221K	MF 220PF K		5
C15 ,16			CE04KW1H220M	ELECTRO 22UF 50WV		
C17 ,18			CF92FV1H221K	MF 220PF K		
C19 ,20			CE04KW1V4R7M	ELECTRO 4.7UF 35WV		
C21 ,22			CE04KW1H2R2M	ELECTRO 2.2UF 50WV		
C23 ,24			CF92FV1H221K	MF 220PF K		
C25 ,26			CE04KW1V4R7M	ELECTRO 4.7UF 35WV		
C27 ,28			CF92FV1H221K	MF 220PF K		7
C29 ,30			CC45FSL1H221J	CERAMIC 220PF J		7
C31 -36			CC45FSL1H221J	CERAMIC 220PF J		5
C31 ,32			CF92FV1H221K	MF 220PF K		7
C33 ,34			CC45FSL1H221J	CERAMIC 220PF J		7
C35 -40			CF92FV1H221K	MF 220PF K		7
C37 ,38			CF92FV1H221K	MF 220PF K		5
C41 ,42			CE04KW1V100M	ELECTRO 10UF 35WV		

E: Scandinavia & Europe K: USA

P: Canada

5: KA-V5500

Y: PX(Far East, Hawaii)


T: England

M: Other Areas

7: KA-V7500

Y : AAFES(Europe)

X: Australia

 indicates safety critical components.

KA-V5500/7500

PARTS LIST

× New Parts

Parts without Parts No. are not supplied.

Les articles non mentionnés dans le Parts No. ne sont pas fournis.

Telle ohne Parts No. werden nicht geliefert.

Ref. No. 参照番号	Address 位置	New Parts 新	Parts No. 部品番号	Description 部品名 / 規格	Desti- nation 仕向	Re- marks 備考
C43 ,44			CC45FSL1H101J	CERAMIC 100PF J		
C45 ,46			CK45FB1H561K	CERAMIC 560PF K		
C47 ,48			CE04KW0J331M	ELECTRO 330UF 6.3WV		
C49 ,50			CF92FV1H123J	MF 0.012UF J		
C51 ,52			CF92FV1H332J	MF 3300PF J		
C53 ,54			CE04KW1V100M	ELECTRO 10UF 35WV		
C55 ,56			CC45FSL1H101J	CERAMIC 100PF J		
C57 ,58			CE04KW1V4R7M	ELECTRO 4.7UF 35WV		
C73 -78			CF92FV1H103J	MF 0.010UF J		5
C73 -81			CF92FV1H103J	MF 0.010UF J		7
C79			CK45FF1H103Z	CERAMIC 0.010UF Z		5
C80 ,81			CF92FV1H103J	MF 0.010UF J		5
C82 ,83			CF92FV1H104J	MF 0.10UF J		
C84			CF92FV1H103J	MF 0.010UF J		7
C84			CK45FF1H103Z	CERAMIC 0.010UF Z		5
C85 -88			CE04KW1A470M	ELECTRO 47UF 10WV		
C89 ,90			CE04KW1V100M	ELECTRO 10UF 35WV		
C93 ,94			CE04KW1A470M	ELECTRO 47UF 10WV		
C95 ,96			CE04KW1A101M	ELECTRO 100UF 10WV		
C97			CE04KW1H2R2M	ELECTRO 2.2UF 50WV		
C98 ,99			CE04KW1V100M	ELECTRO 10UF 35WV		
C100-102			CE04KW1A470M	ELECTRO 47UF 10WV		
C103			CK45FF1H103Z	CERAMIC 0.010UF Z		
C104			CC45FSL1H390J	CERAMIC 39PF J		
C105			CC45FSL1H220J	CERAMIC 22PF J		
C106			CC45FSL1H270J	CERAMIC 27PF J		
C107			CC45FSL1H390J	CERAMIC 39PF J		
C108,109			CF92FV1H103J	MF 0.010UF J		
C112			CC45FSL1H390J	CERAMIC 39PF J		
C113			CC45FSL1H270J	CERAMIC 27PF J		
C114			CE04KW1H010M	ELECTRO 1.0UF 50WV		
C115			CE04KW1A470M	ELECTRO 47UF 10WV		
C116			CF92FV1H392J	MF 3900PF J		
C117			CF92FV1H683J	MF 0.068UF J		
C118-120			CE04KW1H010M	ELECTRO 1.0UF 50WV		
C121			CC45FSL1H101J	CERAMIC 100PF J		
C122,123			CK45FB1H102K	CERAMIC 1000PF K		
C124			CE04KW1H3R3M	ELECTRO 3.3UF 50WV		
C125			CE04KW1A470M	ELECTRO 47UF 10WV		
C126-133			CK45FB1H102K	CERAMIC 1000PF K		7
C128-133			CK45FB1H102K	CERAMIC 1000PF K		5
C134,135			CE04KW1A470M	ELECTRO 47UF 10WV		
C136,137			CE04KW1V100M	ELECTRO 10UF 35WV		
C140,141			CE04KW1A470M	ELECTRO 47UF 10WV		
C142-145			CE04KW1A101M	ELECTRO 100UF 10WV		
C146-152			CK45FB1H102K	CERAMIC 1000PF K		7
C148-152			CK45FB1H102K	CERAMIC 1000PF K		5
C153			CC45FSL1H680J	CERAMIC 68PF J		
C154-156			CC45FSL1H470J	CERAMIC 47PF J		
C157,158			CK45FF1H103Z	CERAMIC 0.010UF Z		
C159-162			CC45FSL1H101J	CERAMIC 100PF J		
C163-170			CF92FV1H102J	MF 1000PF J		7
C164-167			CK45FB1H102K	CERAMIC 1000PF K		5
C169,170			CK45FB1H102K	CERAMIC 1000PF K		5


E: Scandinavia & Europe K: USA P: Canada

5: KA-V5500

Y: PX(Far East, Hawaii) T: England M: Other Areas

7: KA-V7500

Y: AAFES(Europe) X: Australia

 indicates safety critical components.

PARTS LIST

× New Parts

Parts without Parts No. are not supplied.


Les articles non mentionnes dans le Parts No. ne sont pas fournis.

Telle ohne Parts No. werden nicht geliefert.

Ref. No. 参照番号	Address 位置	New Parts 新	Parts No. 部品番号	Description 部品名 / 規格	Desti- nation 仕 向	Re- marks 備考
E1 -4			E13-0825-05	PHONO JACK AUDIO INPUT		7
E1 ,2			E13-0633-05	PHONO JACK VIDEO 1/2, DBS, VDP		5
E3			E13-0249-05	PHONO JACK PHONO		5
E4			E13-0825-05	PHONO JACK TAPE, TUNER, CD		5
E5			E13-0297-05	PHONO JACK VIDEO2		5
E5 ,6			E13-0487-05	PHONO JACK VIDEO INPUT		7
E6			E13-0487-05	PHONO JACK VIDEO1, DBS/TV, VDP		5
E7 ,8			E06-0408-05	CYLINDRICAL RECEPTACLE S VIDEO		5
E7 ,8			E06-0409-05	CYLINDRICAL RECEPTACLE S VIDEO		7
E9			E13-0136-05	PHONO JACK MONITOR OUT		
L1			L40-1501-17	SMALL FIXED INDUCTOR(15UH, K)		
L2 ,3			L40-2201-17	SMALL FIXED INDUCTOR(22UH, K)		
L4 ,5			L40-1021-14	SMALL FIXED INDUCTOR(1.0MH, K)		7
X1			L77-1131-05	CRYSTAL RESONATOR 7.15909MHZ		
X2			L78-0272-05	RESONATOR 503KHZ		
R122, 123			RD14AB2E4R7JTS	FL-PROOF RD 4.7 J 1/4W		
R139, 140			RD14AB2E4R7JTS	FL-PROOF RD 4.7 J 1/4W		
R177-180			RD14AB2E4R7JTS	FL-PROOF RD 4.7 J 1/4W		
R186			RD14AB2E4R7JTS	FL-PROOF RD 4.7 J 1/4W		
D61 -103			HSS104	DIODE		7
D61 -103			1SS133	DIODE		7
D61 -99			HSS104	DIODE		5
D61 -99			1SS133	DIODE		5
IC1			LC7821N	IC(FUNCTION CONTROL SWITCH)		
IC2			LC7822N	IC(FUNCTION CONTROL SWITCH)		
IC3 ,4			NJM4565D-D	IC(OP AMP X2)		
IC5			LC7821N	IC(FUNCTION CONTROL SWITCH)		
IC6			UPC4570C-A	IC		
IC7 ,8			TC4051BP	IC(8CH MPX/ DE-MPX)		
IC9 ,10			MC14577A	IC		
IC11			M50554-003SP	IC(CHARACTER GENERATOR)		
IC12			NJM2229S	IC(SCREEN DISPLAY)		
IC13			TC4052BP	IC(4CH MPX/DE-MPX)		
IC14			MC14577A	IC		
Q1			2SC2320(E, F)	TRANSISTOR		
Q2			2SA999(E, F)	TRANSISTOR		
Q3			2SC2878(B)	TRANSISTOR		5
Q3 -5			2SC2878(B)	TRANSISTOR		7
Q5			2SC2878(B)	TRANSISTOR		5
Q6 -8			DTA124ES	DIGITAL TRANSISTOR		7
Q7 ,8			DTA124ES	DIGITAL TRANSISTOR		5
Q9			2SC2320(E, F)	TRANSISTOR		
Q10			2SA999(E, F)	TRANSISTOR		
Q11			2SC2320(E, F)	TRANSISTOR		
Q12			2SA999(E, F)	TRANSISTOR		
Q13 -16			2SC2878(B)	TRANSISTOR		7
Q13 ,14			2SC2878(B)	TRANSISTOR		5
DOLBY NR UNIT (X14-2650-02: KA-V7500, 0-03: KA-V5500)						
C1 ,2			CE04KW1H220M	ELECTRO 22UF 50WV		5
C1 ,2			C90-1794-05	ELECTRO 10UF 35WV		7
C3 ,4			CF92FV1H104J	MF 0.10UF J		
C5			CK45FB1H681K	CERAMIC 680PF K		
C6 ,7			CF92FV1H154J	MF 0.15UF J		
C8 ,9			CE04GW1E4R7M	LL-ELEC 4.7UF 25WV		

E: Scandinavia & Europe K: USA P: Canada
 Y: PX(Far East, Hawaii) T: England M: Other Areas
 Y :AAFES(Europe) X: Australia

5: KA-V5500
 7: KA-V7500

 indicates safety critical components.

KA-V5500/7500

PARTS LIST

× New Parts

Parts without Parts No. are not supplied.

Les articles non mentionnes dans le Parts No. ne sont pas fournis.

Teile ohne Parts No. werden nicht geliefert.

Ref. No. 参照番号	Address 位置	New Parts 新	Parts No. 部品番号	Description 部品名 / 規格	Desti- nation 仕向	Re- marks 備考
C10			CF92FV1H682J	MF 6800PF J		
C11			CE04KW1E101M	ELECTRO 100UF 25WV		
C12			CF92FV1H224J	MF 0.22UF J		
C13			CE04GW1E4R7M	LL-ELEC 4.7UF 25WV		
C14			CF92FV1H224J	MF 0.22UF J		
C15 ,16			CE04KW1H2R2M	ELECTRO 2.2UF 50WV		5
C15 ,16			C90-1794-05	ELECTRO 10UF 35WV		7
C17			CE04KW2A100M	ELECTRO 10UF 100WV		
C18			CF92FV1H474J	MF 0.47UF J		
C19 ,20			CE04KW1H2R2M	ELECTRO 2.2UF 50WV		5
C19 ,20			C90-1794-05	ELECTRO 10UF 35WV		7
C21			CE04KW1E101M	ELECTRO 100UF 25WV		
C22			CF92FV1H224J	MF 0.22UF J		
C23			CE04GW1E4R7M	LL-ELEC 4.7UF 25WV		
C24			CF92FV1H224J	MF 0.22UF J		
C25			CE04KW1E101M	ELECTRO 100UF 25WV		
C26			CF92FV1H682J	MF 6800PF J		
C27 ,28			CE04GW1E4R7M	LL-ELEC 4.7UF 25WV		
C29 ,30			CF92FV1H334J	MF 0.33UF J		
C31 ,32			CF92FV1H104J	MF 0.10UF J		
C33			CK45FB1H681K	CERAMIC 680PF K		
C35 ,36			C91-0757-05	CERAMIC 1000PF K		
C37			CE04GW1E100M	LL-ELEC 10UF 25WV		
C38			C90-1807-05	ELECTRO 100UF 25WV		
C39 ,40			CE04KW1H220M	ELECTRO 22UF 50WV		5
C39 ,40			C90-1794-05	ELECTRO 10UF 35WV		7
C41 ,42			CE04KW1E101M	ELECTRO 100UF 25WV		
C43			CF92FV1H103J	MF 0.010UF J		
C44			CC45FSL1H101J	CERAMIC 100PF J		
C50 ,51			CF92FV1H103J	MF 0.010UF J		
R35 ,36			RN14BK2C4642FTS	RN 46.4K F 1/6W		7
R37 ,38			RN14BK2C3161FTS	RN 3.16K F 1/6W		7
R39 ,40			RN14BK2C3482FTS	RN 34.8K F 1/6W		7
VR1 ,2		*	R12-3126-05	TRIMMING POT.(10K) AUTO BALANC		
D2 -5			HSS104	DIODE		
D2 -5			1SS133	DIODE		
IC1			LA2770	IC		
IC2			TC4052BP	IC(4CH MPX/DE-MPX)		
IC3 ,4			UPC4072C	IC(OP AMP X2)		
IC5			TDA1074A	IC(18-LEAD PUAL IN-LINE)		
IC6			UPC78L12J	IC(VOLTAGE REGULATOR/ +12V)		
Q1 -4			2SC1740S(Q,R)	TRANSISTOR		
Q1 -4			2SC945(A)(Q,P)	TRANSISTOR		
Q5			2SK163(L,M)	FET		
MAIN AMP UNIT (X89-1122-71: KA-V5500, 2-72: KA-V7500)						
C1 ,2			CE04KW1H2R2M	ELECTRO 2.2UF 50WV		5
C1 ,2			C90-1794-05	ELECTRO 10UF 35WV		7
C3 ,4			CF92FV1H101K	MF 100PF K		
C7 ,8			CF92FV1H101K	MF 100PF K		
C9 ,10			CC45FSL1H220J	CERAMIC 22PF J		
C11 ,12			CC45FSL1H101J	CERAMIC 100PF J		
C13 ,14			CC45FSL1H221J	CERAMIC 220PF J		
C15 ,16			CE04KW1V100M	ELECTRO 10UF 35WV		
C19			CE04KW1J470M	ELECTRO 47UF 63WV		
C20			CE04KW1J221M	ELECTRO 220UF 63WV		

E: Scandinavia & Europe K: USA

P: Canada

5: KA-V5500

Y: PX(Far East, Hawaii)

T: England

M: Other Areas

7: KA-V7500

Y : AAFES(Europe)

X: Australia

△ indicates safety critical components.

KA-V5500/7500

PARTS LIST

× New Parts

Parts without Parts No. are not supplied.

Les articles non mentionnes dans le Parts No. ne sont pas fournis.


Telle ohne Parts No. werden nicht geliefert.

Ref. No. 参照番号	Address 位置	New Parts 新	Parts No. 部品番号	Description 部品名 / 規格	Desti- nation 仕 向	Re- marks 備考
C23			CE04KW1E470M	ELECTRO 47UF 25WV		
R13 ,14			RD14AB2E221JTS	FL-PROOF RD 220 J 1/4W		
R17 ,18			RD14AB2E221JTS	FL-PROOF RD 220 J 1/4W		
R27 -30			RD14AB2E4R7JTS	FL-PROOF RD 4.7 J 1/4W		
R31 -34			RD14AB2E221JTS	FL-PROOF RD 220 J 1/4W		
R35 -38			RD14AB2E2R2JTS	FL-PROOF RD 2.2 J 1/4W		
R45 ,46			RD14AB2E220JTS	FL-PROOF RD 22 J 1/4W		
VR1 ,2			R12-1070-05	TRIM POT. 1K		
D1 ,2			HSS104	DIODE		
D1 ,2			1SS133	DIODE		
Q1 -4			2SA992(F,E)	TRANSISTOR		
Q5 -8			2SC1845(F,E)	TRANSISTOR		
Q9 ,10			2SA992(F,E)	TRANSISTOR		
Q11 ,12			2SC2590	TRANSISTOR		
Q13 ,14			2SA1110	TRANSISTOR		
Q19			2SC945(A)(Q,P)	TRANSISTOR		

E: Scandinavia & Europe K: USA P: Canada
 Y: PX(Far East, Hawaii) T: England M: Other Areas
 Y : AAFES(Europe) X: Australia

5: KA-V5500

7: KA-V7500

 indicates safety critical components.

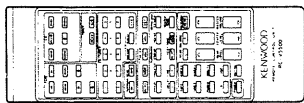
KA-V5500/7500

ACCESSORIES

<KA-V5500>

Accessories

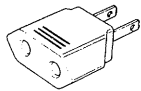
Remote control unit 1
(A70-0376-05) Batteries (R6/"AA") 2



(A09-0088-08)

Battery cover

AC plug adaptor 1
(Except for some areas.)
For the unit with a Euro-
pean AC plug in areas
other than Europe.



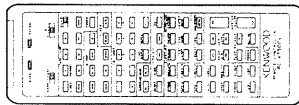
(E03-0115-05)



<KA-V7500>

Accessories

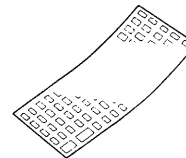
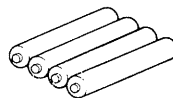
Remote control unit 1
(A70-0375-05) Remote control unit
entry sheet



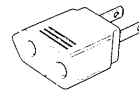
(A09-0086-08)

Battery cover

Batteries (R03/UM-4/"AAA") 4



AC plug adaptor 1
(Except for some areas.)
For the unit with a Euro-
pean AC plug in areas
other than Europe.



KA-V5500/7500

SPECIFICATIONS

<KA-V7500 >

AUDIO section

Continuous rated power output (FTC)

80 watts per channel minimum RMS, both channels driven, at 8 Ω from 20 Hz to 20,000 Hz with no more than 0.08 % total harmonic distortion.

Dynamic power

146 W (8 Ω), 237 W (4 Ω),

[SURROUND MODE]

Continuous rated power output (FTC)

Front

70 watts per channel minimum RMS, both channels driven, at 8 Ω 1 kHz with no more than 0.2 % total harmonic distortion.

Center

70 watts per channel minimum RMS, both channels driven, at 8 Ω 1 kHz with no more than 0.2 % total harmonic distortion.

Rear

18 watts per channel minimum RMS, both channels driven, at 8 Ω 1 kHz with no more than 0.9 % total harmonic distortion.

Total harmonic distortion

0.08 % (20 Hz-20 kHz, 80 W, 8 Ω)
0.02 % (1kHz, 80 W, 8 Ω)

Frequency response

LINE (CD, TUNER, AUX, TAPE) ... 5 Hz - 100 kHz,
+0 dB, -3 dB

PHONO 'RIAA' response

20 Hz - 20 kHz, +0.3 dB, -0.3 dB

Maximum Input level

PHONO (MM) 110 mV, 0.08 % T.H.D. at 1 kHz

Signal to noise ratio

PHONO (MM) ... 78 dB (IHF'66)/ 79 dB (IHF'78)
LINE (CD, TUNER, AUX, TAPE)
100dB(IHF'66)/84 dB (IHF'78)

Input sensitivity/Impedance

PHONO (MM) 2.5 mV/47 k Ω
LINE (CD, TUNER, AUX, TAPE) 200 mV/47 k Ω
ADAPTOR IN 200 mV/47 k Ω

Tone control

BASS ± 10 dB (at 100Hz)
TREBLE ± 10 dB (at 10kHz)

Output level/Impedance

TAPE REC 200 mV/800 Ω
ADAPTOR OUT 200 mV/800 Ω
Front channel preout 1 V/600 Ω
Center channel preout 1 V/2.2 k Ω
Rear channel preout 1 V/600 Ω

VIDEO section

Television format NTSC

Input level/Impedance

VIDEO (composite) 1Vp-p/75 Ω
Input (VIDEO 1, VIDEO 2, VIDEO 3, DBS/TV, VDP,
AV AUX)

S-VIDEO (Luminance signal) 1Vp-p/75 Ω
(Chrominance signal) 0.286Vp-p/75 Ω
Input (VIDEO 2, VIDEO 3, VDP, AV AUX)

Output level/Impedance

VIDEO (composite) 1Vp-p/75 Ω
Output (MONITOR OUT, VIDEO 1, VIDEO 2,
VIDEO 3)

S-VIDEO (Luminance signal) 1Vp-p/75 Ω
(Chrominance signal) 0.286Vp-p/75 Ω
Output (MONITOR OUT, VIDEO 2, VIDEO 3)

GENERAL

Power consumption 4 A (For U.S.A.), 350 W (IEC)

Dimensions W: 440 mm (17-5/16")

H: 163 mm (6-7/16")

D: 424 mm (16-11/16")

Weight (Net) 13.7 kg (30.2 lb)

Note: _____
KENWOOD follows a policy of continuous advancements in development. For this reason specifications may be changed without notice.

KA-V5500/7500

SPECIFICATIONS

<KA-V5500 >

AUDIO section

[STEREO MODE]

Continuous rated power output (FTC)

60 watts per channel minimum RMS, both channels driven, at 8 Ω from 20 Hz to 20,000 Hz with no more than 0.08 % total harmonic distortion.

Dynamic power 85 W (8 Ω)
130 W (4 Ω)

[SURROUND MODE]

Continuous rated power output

Front (1kHz, 0.2 % T.H.D. at 8 Ω). 50 W + 50 W
Center (1kHz, 0.2 % T.H.D. at 8 Ω). 50 W
Rear (1kHz, 0.9 % T.H.D. at 8 Ω). 18 W + 18 W

Total harmonic distortion

0.08 % (20 Hz-20 kHz, 60 W, 8 Ω)
0.03 % (1 kHz, 60 W, 8 Ω)

Frequency response

LINE (CD, TUNER, TAPE) 5 Hz - 100 kHz,
+0 dB, -3dB

PHONO 'RIAA' response

20Hz - 20 kHz, +0.3 dB, -0.3 dB

Maximum Input level

PHONO (MM) 110 mV, 0.08 % T.H.D.
at 1 kHz

Signal to noise ratio

PHONO (MM) ... 78 dB (IHF'66)/ 79 dB (IHF'78)
LINE (CD, TUNER, TAPE)
100dB(IHF'66)/ 84 dB (IHF'78)

Input sensitivity/Impedance

PHONO (MM) 2.5 mV/47 k Ω
LINE (CD, TUNER, TAPE) 200 mV/47 k Ω
ADAPTOR IN 200 mV/47 k Ω

Tone control

BASS ± 10 dB (at 100Hz)
TREBLE ± 10 dB (at 10kHz)

Note:

Component and circuitry are subject to modification to insure best operation under differing local conditions. This manual is based on the U.S.A. (K) standard, and provides information on regional circuit modification through use of alternate schematic diagrams, and information on regional component variations through use of parts list.

Output level/Impedance

TAPE REC 200 mV/800 Ω
ADAPTOR OUT 200 mV/800 Ω
Front channel preout 1 V/600 Ω
Center channel preout 1 V/2.2 k Ω
Rear channel preout 1 V/600 Ω

VIDEO section

Television format NTSC

Input level/Impedance

VIDEO (composite) 1V_{P.P}/75 Ω
Input (VIDEO1, VIDEO2, DBS/TV, VDP)

S-VIDEO (Luminance signal) 1V_{P.P}/75 Ω
(Chrominance signal) 0.286V_{P.P}/75 Ω
Input (VIDEO 2, VDP)

Output level/Impedance

VIDEO (composite) 1V_{P.P}/75 Ω
Output (MONITOR OUT, VIDEO 1, VIDEO 2)
S-VIDEO (Luminance signal) 1V_{P.P}/75 Ω
(Chrominance signal) 0.286V_{P.P}/75 Ω
Output (MONITOR OUT, VIDEO 2)

GENERAL

Power consumption 300 W (IEC)

Dimensions W: 400 mm (17-5/16")
H: 163 mm (6-7/16")
D: 424 mm (16-11/16")

Weight (Net) 12.6 kg (27.8 lb)

KENWOOD follows a policy of continuous advancements in development.

For this reason specifications may be changed without notice.

DOLBY and the double-D symbol are trademarks of Dolby Laboratories Licensing Corporation. Noise reduction circuit made under license from Dolby Laboratories Licensing Corporation.

KENWOOD CORPORATION

Shionogi Shibuya Building, 17-5, 2-chome Shibuya, Shibuya-ku, Tokyo 150, Japan

KENWOOD U.S.A. CORPORATION
2201 East Dominguez Street, Long Beach, CA 90810;
550 Clark Drive, Mount Olive, NJ 07828, U.S.A.

KENWOOD ELECTRONICS CANADA INC.
P.O. BOX 1075, 959 Gana Court, Mississauga, Ontario, Canada L4T 4C2

TRIO-KENWOOD U.K. LIMITED
KENWOOD House, Dwight Road, Watford, Herts., WD1 8EB United Kingdom

KENWOOD ELECTRONICS BENELUX N.V.
Mechelsesteenweg 418 B-1930 Zaventem, Belgium

KENWOOD ELECTRONICS DEUTSCHLAND GMBH
Rembrücker-Str. 15, 6056 Heusenstamm, West Germany

TRIO-KENWOOD FRANCE S.A.
13 Boulevard Ney, 75018 Paris, France

KENWOOD LINEAR S.p.A.
20125, MILANO-VIA ARBE, 50, ITALY

KENWOOD ELECTRONICS AUSTRALIA PTY. LTD. (INCORPORATED IN N.S.W.)
4E Woodcock Place, Lane Cove, N.S.W. 2066, Australia

KENWOOD & LEE ELECTRONICS, LTD.
Wang Kee Building, 4th Floor, 34-37, Connaught Road, Central, Hong Kong